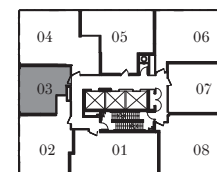
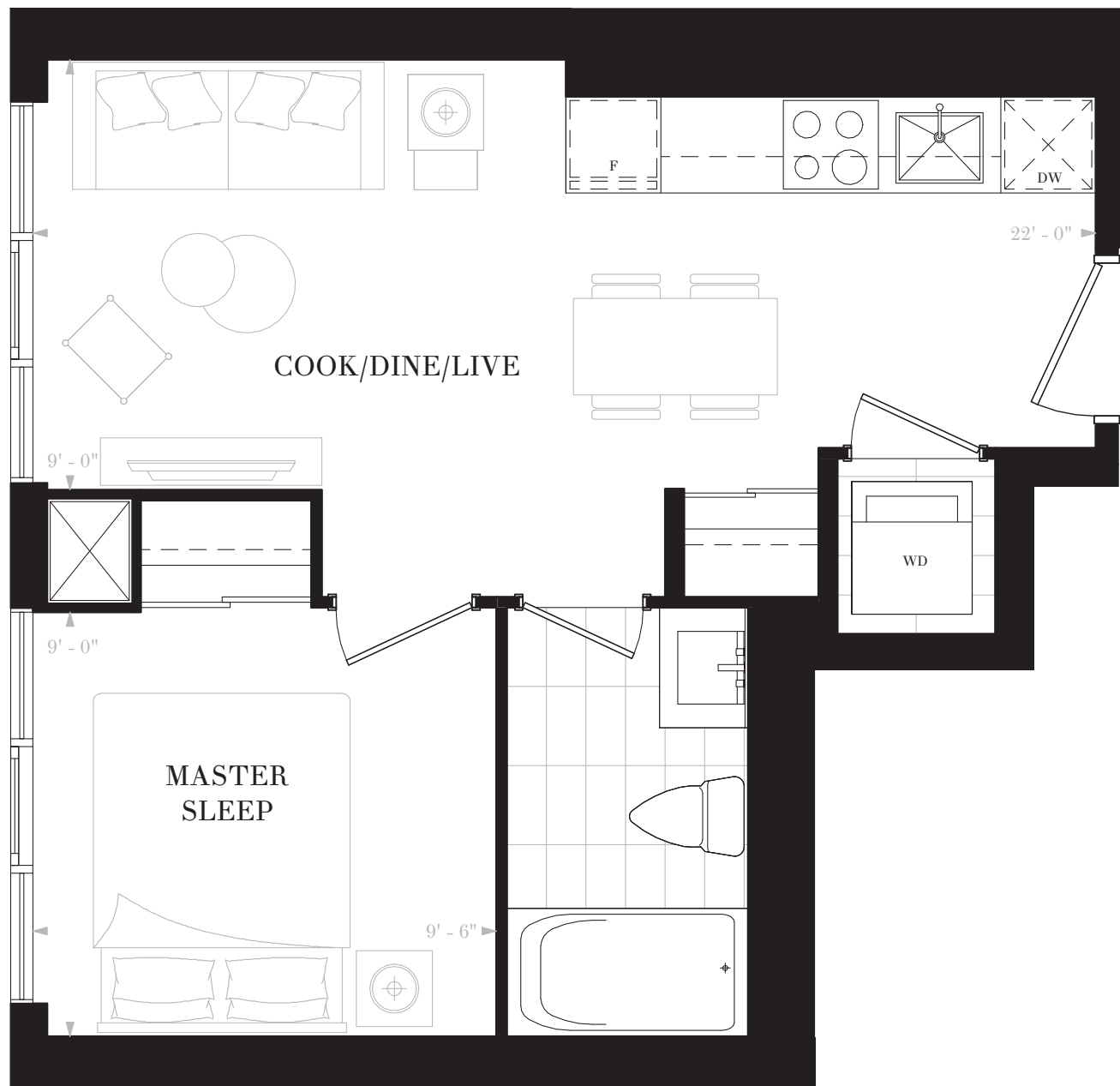


**NOBU**  
RESIDENCES  
TORONTO

**SUITE E1B**  
1 BEDROOM  
1 BATH

INTERIOR: 427 SF



FLOORS 13-19, 28-35

**NOBURESIDENCES.CA**

Any stated areas and/or dimensions shown are approximate only and subject to normal construction variances. Actual usable floor space may vary from any stated or depicted floor area. The layout of the suite may be reversed depending on the location of the unit within the project. Any furniture depicted is for illustration purposes only and does not necessarily reflect the electrical plan of the unit. Windows behind the cladding, installed as a design element, may be spandrel or vision glass. The view from or through the windows to the exterior may be partially obstructed by materials affixed to the exterior cladding of the building as part of an overall design element. Any and all sizes and/or specifications are subject to change without notice. All illustrations are artist's concept only. E. & O. E. May 2017



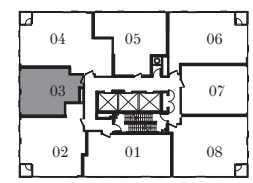
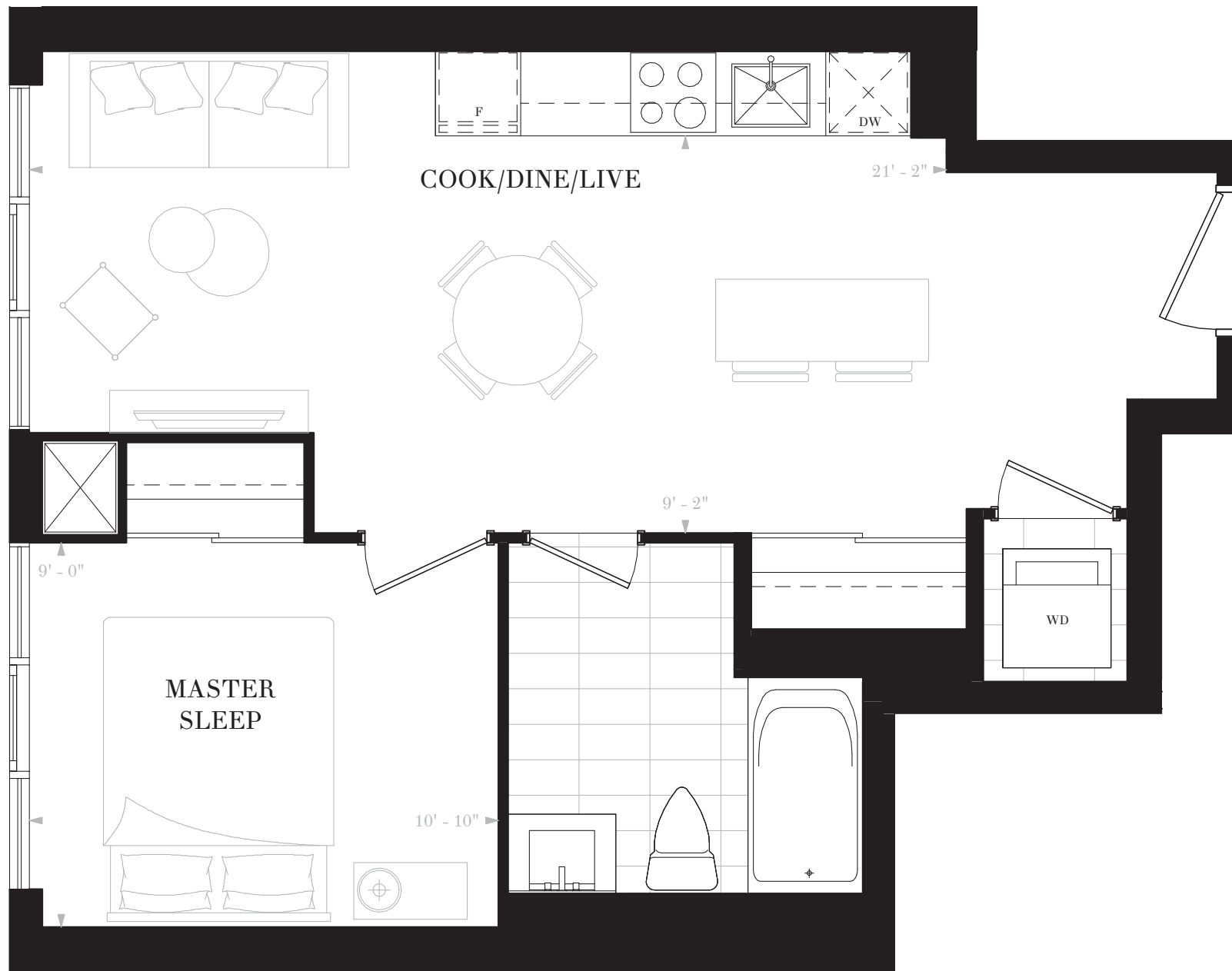
**NOBU**  
RESIDENCES  
TORONTO

**SUITE E1C**

1 BEDROOM

1 BATH

INTERIOR: 527 SF



FLOORS 20-27

**NOBURESIDENCES.CA**

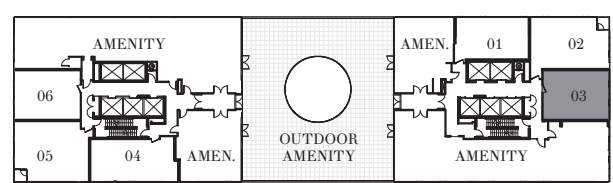
Any stated areas and/or dimensions shown are approximate only and subject to normal construction variances. Actual usable floor space may vary from any stated or depicted floor area. The layout of the suite may be reversed depending on the location of the unit within the project. Any furniture depicted is for illustration purposes only and does not necessarily reflect the electrical plan of the unit. Windows behind the cladding, installed as a design element, may be spandrel or vision glass. The view from or through the windows to the exterior may be partially obstructed by materials affixed to the exterior cladding of the building as part of an overall design element. Any and all sizes and/or specifications are subject to change without notice. All illustrations are artist's concept only. E. & O. E. May 2017



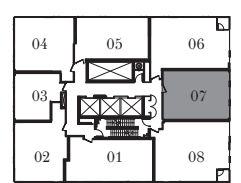
# NOBU

RESIDENCES  
TORONTO

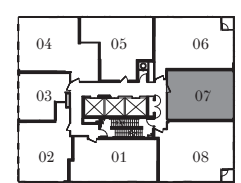
**SUITE E2B**  
2 BEDROOMS  
2 BATHS  
INTERIOR: 652 SF



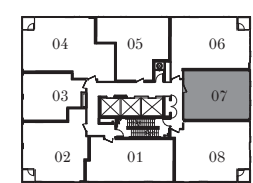
FLOOR 10



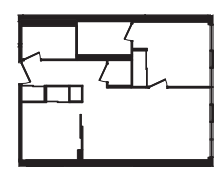
FLOORS 11-12



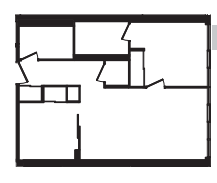
FLOORS 13-19, 28-35



FLOORS 20-27



FLOORS 10-11, 14-15, 18-19,  
22-23, 26-27, 30-31, 34-35



FLOORS 12-13, 16-17,  
20-21, 24-25, 28-29, 32-33

NOBURESIDENCES.CA

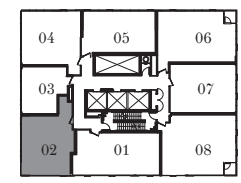
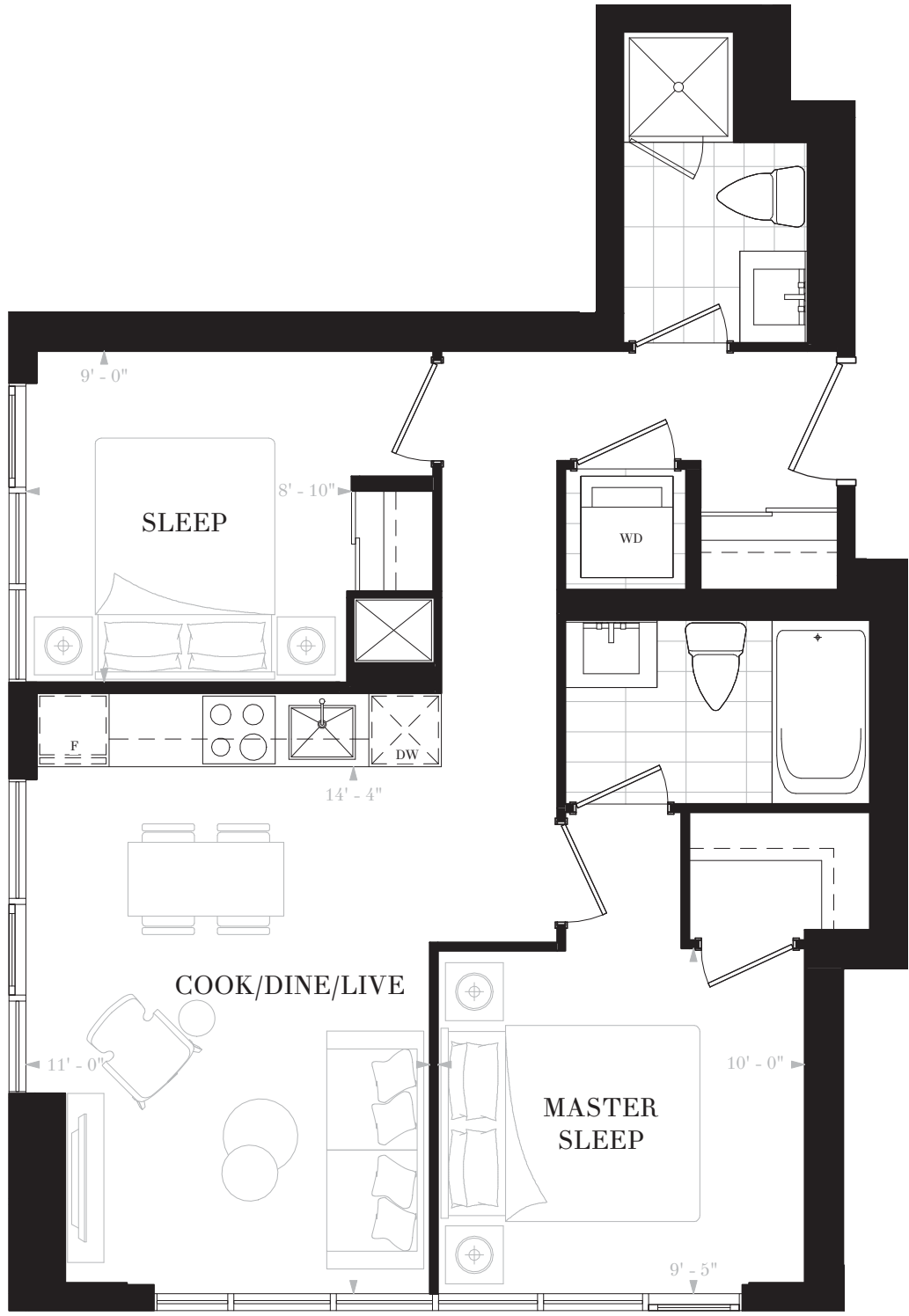
Any stated areas and/or dimensions shown are approximate only and subject to normal construction variances. Actual usable floor space may vary from any stated or depicted floor area. The layout of the suite may be reversed depending on the location of the unit within the project. Any furniture depicted is for illustration purposes only and does not necessarily reflect the electrical plan of the unit. Windows behind the cladding, installed as a design element, may be spandrel or vision glass. The view from or through the windows to the exterior may be partially obstructed by materials affixed to the exterior cladding of the building as part of an overall design element. Any and all sizes and/or specifications are subject to change without notice. All illustrations are artist's concept only. E. & O. E. May 2017



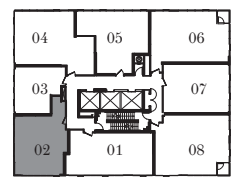
# NOBU

RESIDENCES  
TORONTO

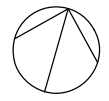
**SUITE E2C**  
 2 BEDROOMS  
 2 BATHS  
 INTERIOR: 667 SF



FLOORS 11-12



FLOORS 13-19, 28-35



# NOBU

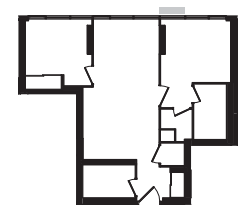
RESIDENCES  
TORONTO

**SUITE E2E**

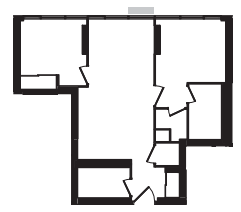
2 BEDROOMS

2 BATHS

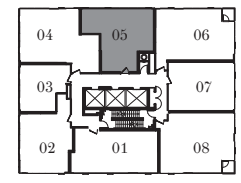
INTERIOR: 719 SF



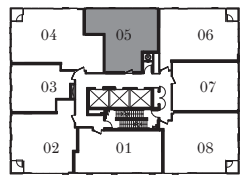
FLOORS 13, 16-17, 20-21,  
24-25, 28-29, 32-33



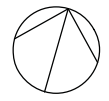
FLOORS 14-15, 18-19,  
22-23, 26-27, 30-31, 34-35



FLOORS 13-19, 28-35



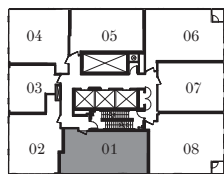
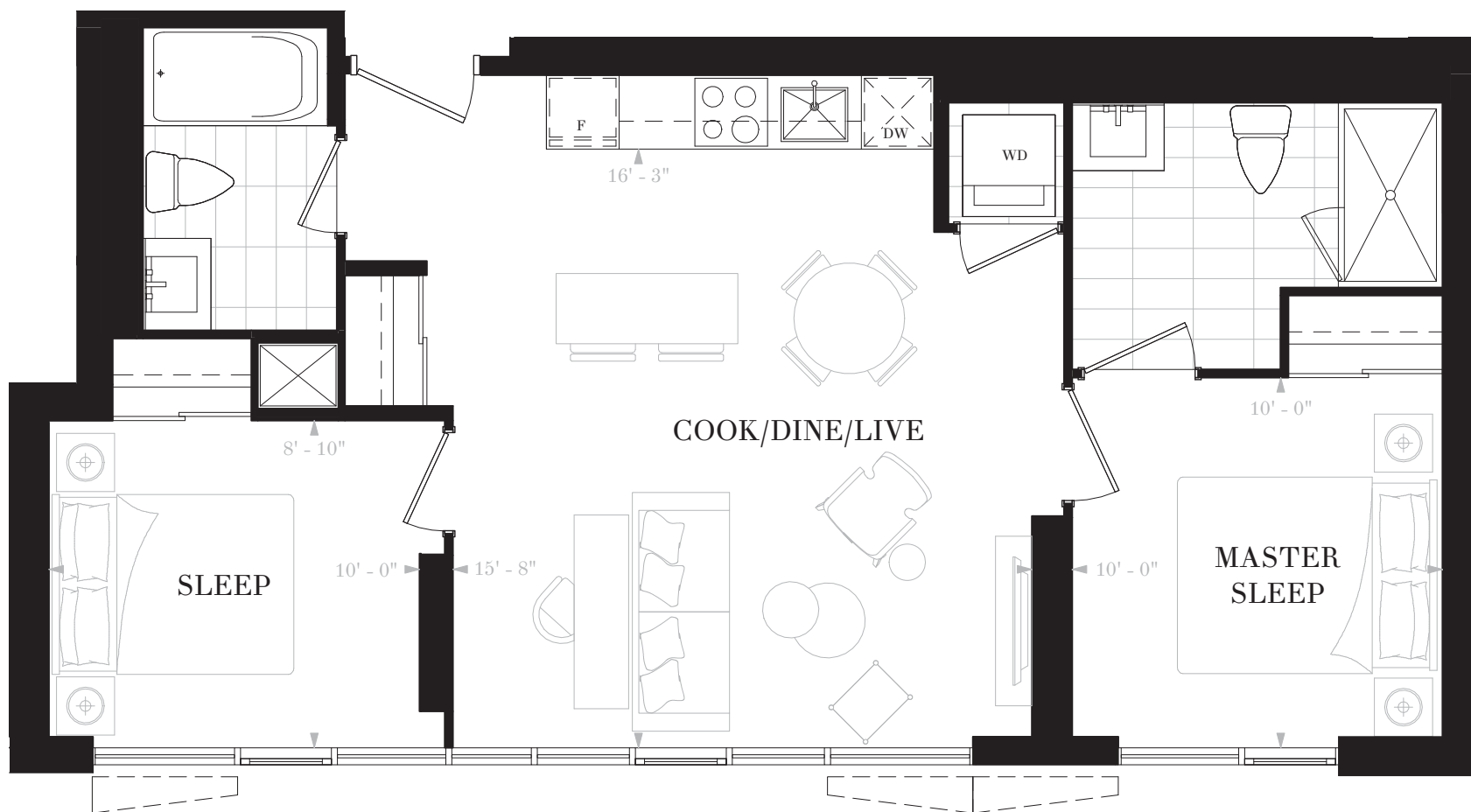
FLOORS 20-27



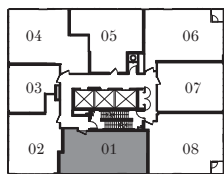
# NOBU

RESIDENCES  
TORONTO

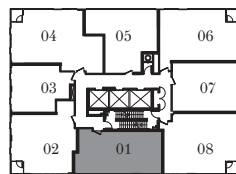
**SUITE E2F**  
 2 BEDROOMS  
 2 BATHS  
 INTERIOR: 748 SF



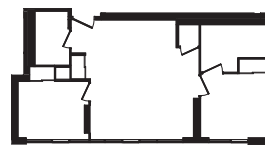
FLOORS 11-12



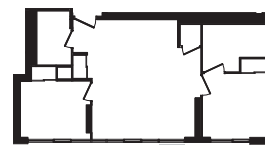
FLOORS 13-19, 28-35



FLOORS 20-27



FLOORS 11, 14-15, 18-19,  
22-23, 26-27, 30-31, 34-35



FLOORS 12-13, 16-17, 20-21,  
24-25, 28-29, 32-33



# NOBU

RESIDENCES  
TORONTO

**SUITE E2G**

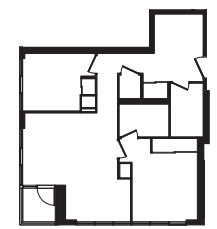
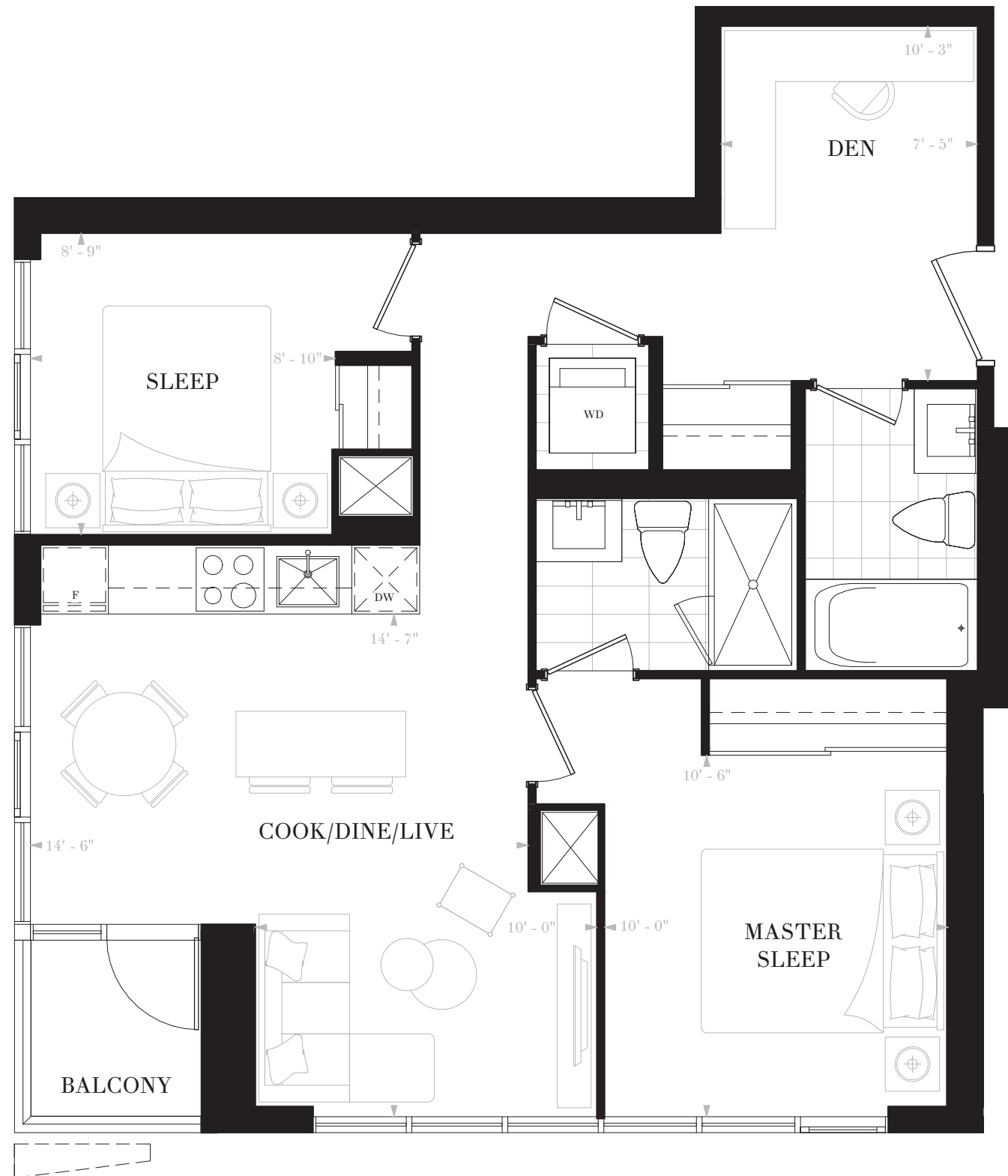
2 BEDROOMS & DEN

2 BATHS

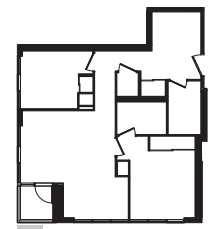
INTERIOR: 776 SF

BALCONY: 28 SF

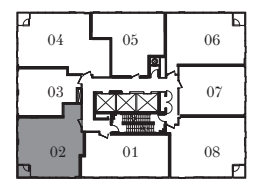
TOTAL: 804 SF



FLOORS 20-21, 24-25



FLOORS 22-23, 26-27



FLOORS 20-27

NOBURESIDENCES.CA

Any stated areas and/or dimensions shown are approximate only and subject to normal construction variances. Actual usable floor space may vary from any stated or depicted floor area. The layout of the suite may be reversed depending on the location of the unit within the project. Any furniture depicted is for illustration purposes only and does not necessarily reflect the electrical plan of the unit. Windows behind the cladding, installed as a design element, may be spandrel or vision glass. The view from or through the windows to the exterior may be partially obstructed by materials affixed to the exterior cladding of the building as part of an overall design element. Any and all sizes and/or specifications are subject to change without notice. All illustrations are artist's concept only. E. & O. E. May 2017



# NOBU

RESIDENCES  
TORONTO

**SUITE E2H**

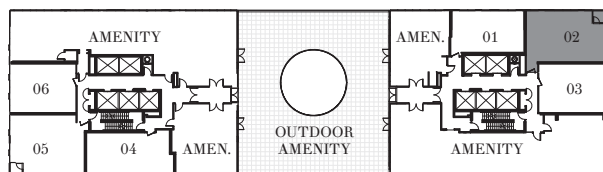
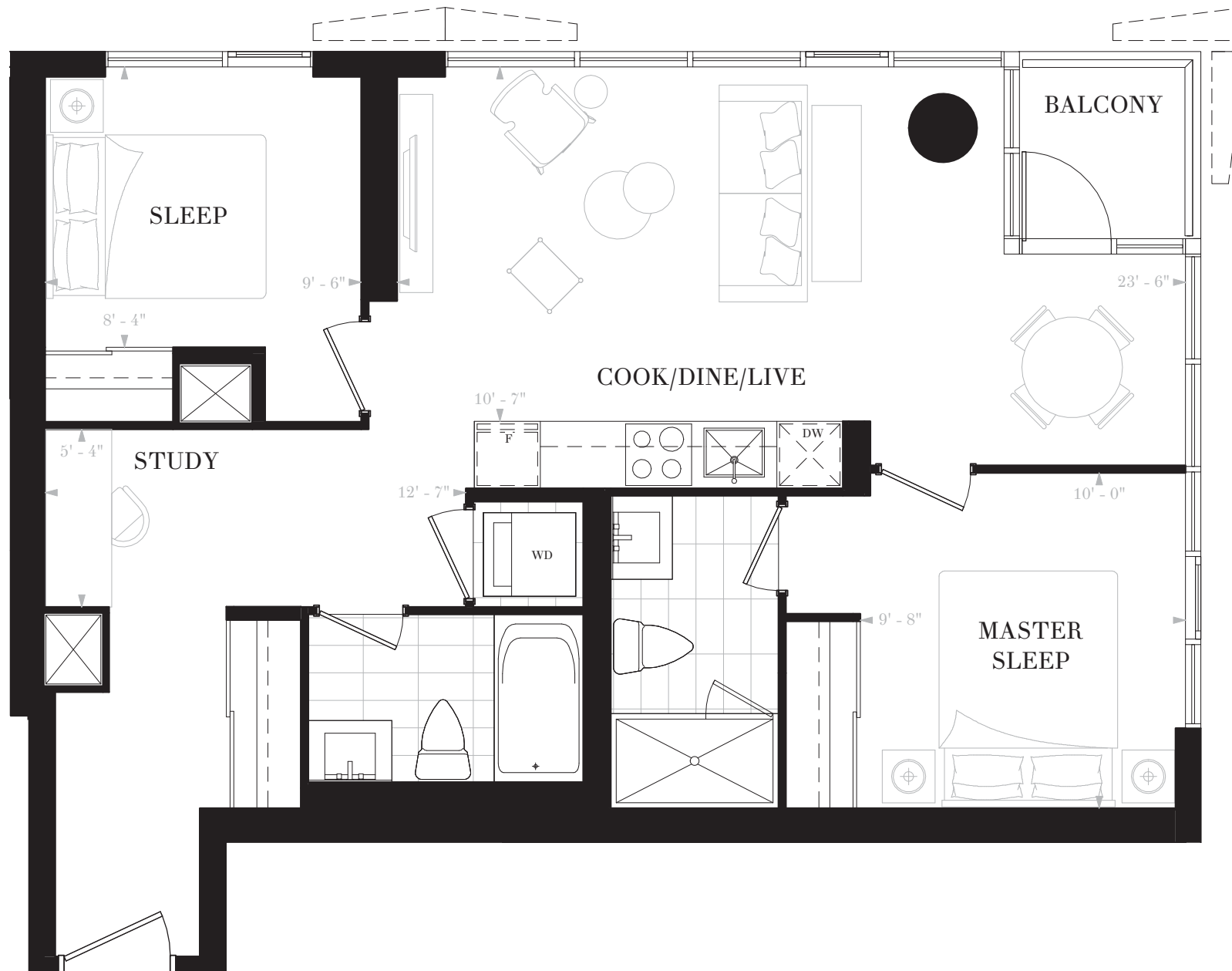
2 BEDROOMS

2 BATHS

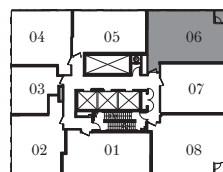
INTERIOR: 799 SF

BALCONY: 28 SF

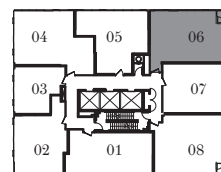
TOTAL: 827 SF



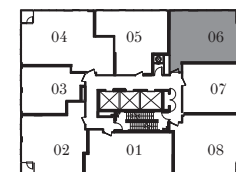
FLOOR 10



FLOORS 11-12



FLOORS 13-19, 28-35



FLOORS 20-27



FLOORS 10-11, 14-15, 18-19,  
22-23, 26-27, 30-31, 34-35



FLOORS 12-13, 16-17,  
20-21, 24-25, 28-29, 32-33

NOBURESIDENCES.CA

Any stated areas and/or dimensions shown are approximate only and subject to normal construction variances. Actual usable floor space may vary from any stated or depicted floor area. The layout of the suite may be reversed depending on the location of the unit within the project. Any furniture depicted is for illustration purposes only and does not necessarily reflect the electrical plan of the unit. Windows behind the cladding, installed as a design element, may be spandrel or vision glass. The view from or through the windows to the exterior may be partially obstructed by materials affixed to the exterior cladding of the building as part of an overall design element. Any and all sizes and/or specifications are subject to change without notice. All illustrations are artist's concept only. E. & O. E. May 2017





# NOBU

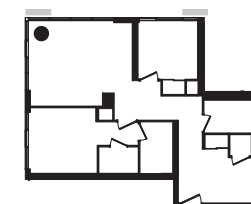
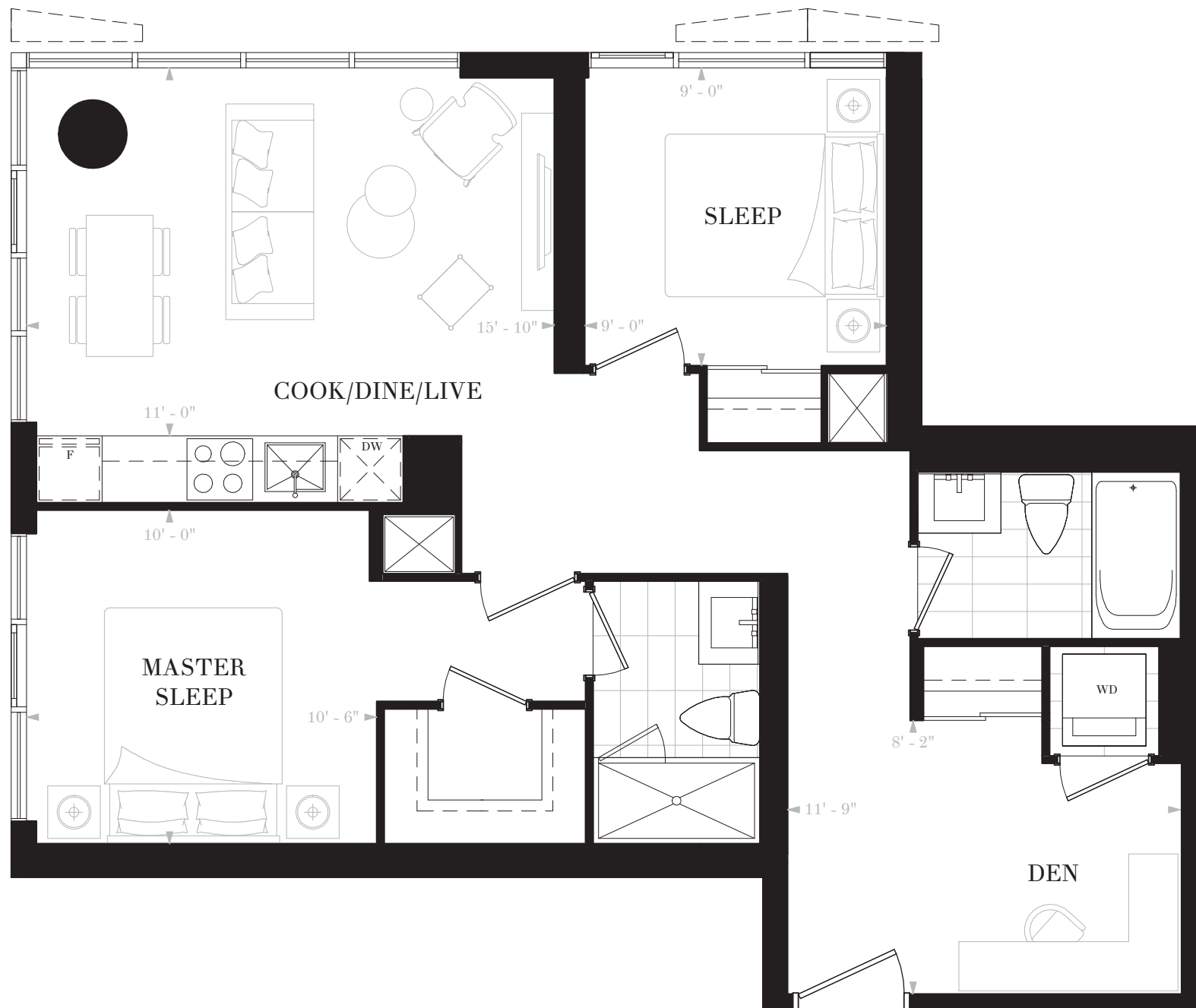
RESIDENCES  
TORONTO

**SUITE E2J**

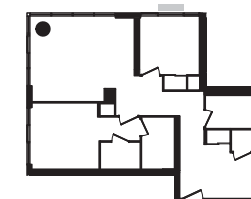
2 BEDROOMS & DEN

2 BATHS

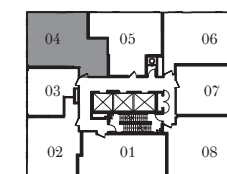
INTERIOR: 814 SF



FLOORS 13, 16-17, 28-29,  
32-33



FLOORS 14-15, 18-19, 30-31,  
34-35



FLOORS 13-19, 28-35

NOBURESIDENCES.CA

Any stated areas and/or dimensions shown are approximate only and subject to normal construction variances. Actual usable floor space may vary from any stated or depicted floor area. The layout of the suite may be reversed depending on the location of the unit within the project. Any furniture depicted is for illustration purposes only and does not necessarily reflect the electrical plan of the unit. Windows behind the cladding, installed as a design element, may be spandrel or vision glass. The view from or through the windows to the exterior may be partially obstructed by materials affixed to the exterior cladding of the building as part of an overall design element. Any and all sizes and/or specifications are subject to change without notice. All illustrations are artist's concept only. E. & O. E. May 2017



# NOBU

RESIDENCES  
TORONTO

**SUITE E2K**

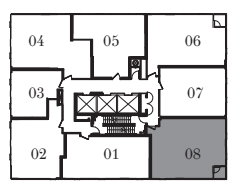
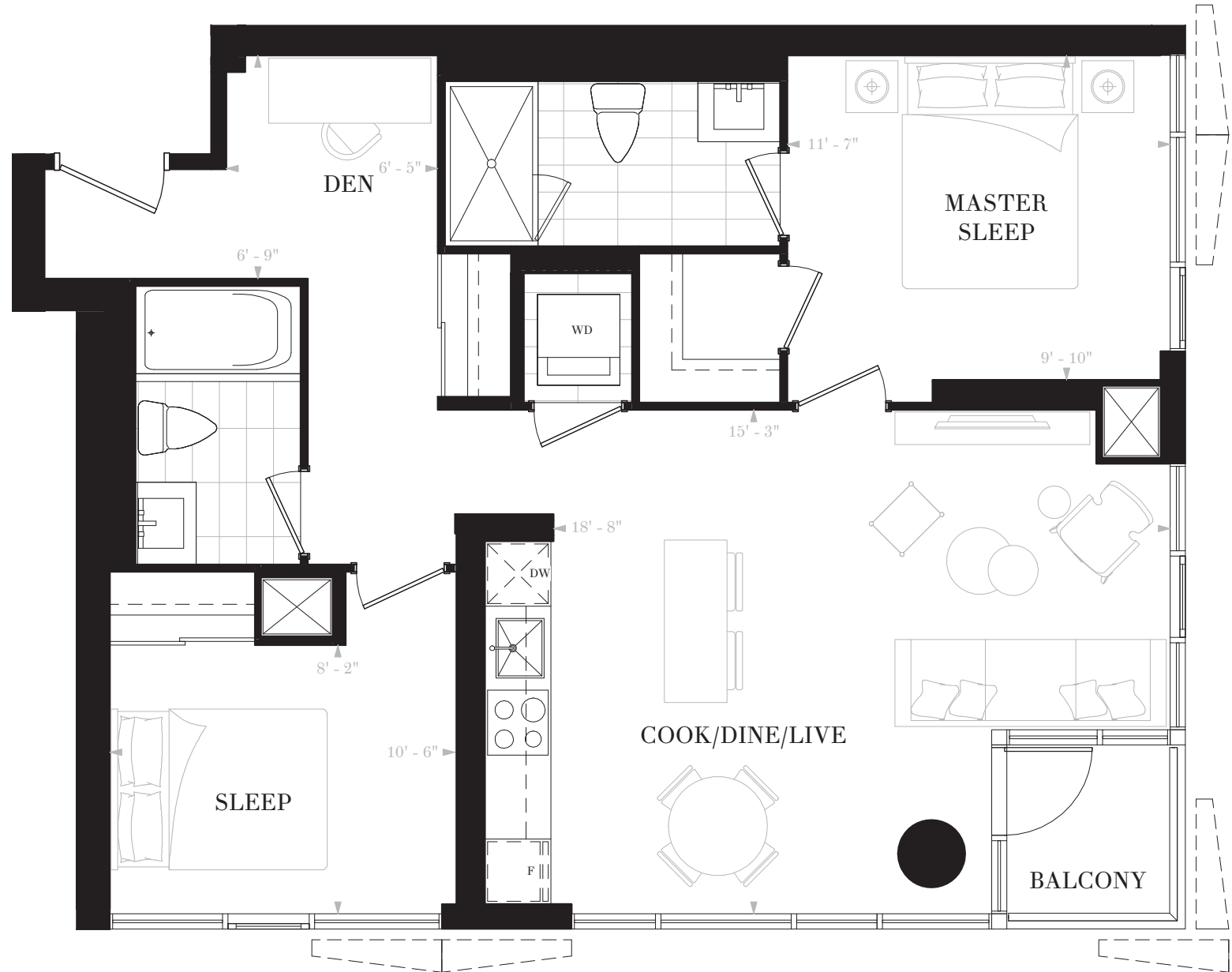
2 BEDROOMS & DEN

2 BATHS

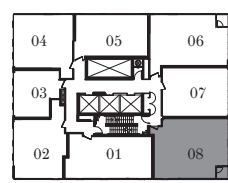
INTERIOR: 862 SF

BALCONY: 28 SF

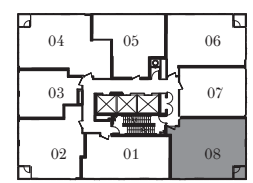
TOTAL: 890 SF



FLOORS 11-12



FLOORS 13-19, 28-35



FLOORS 20-27



FLOORS 11, 14-15, 18-19,  
22-23, 26-27, 30-31, 34-35



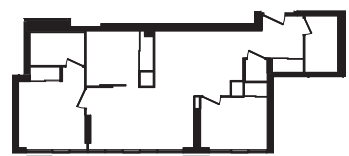
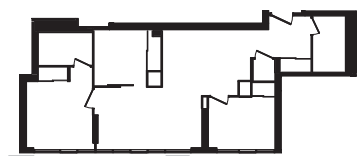
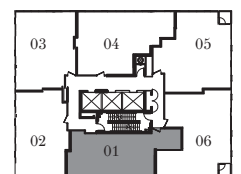
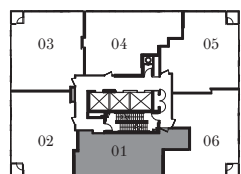
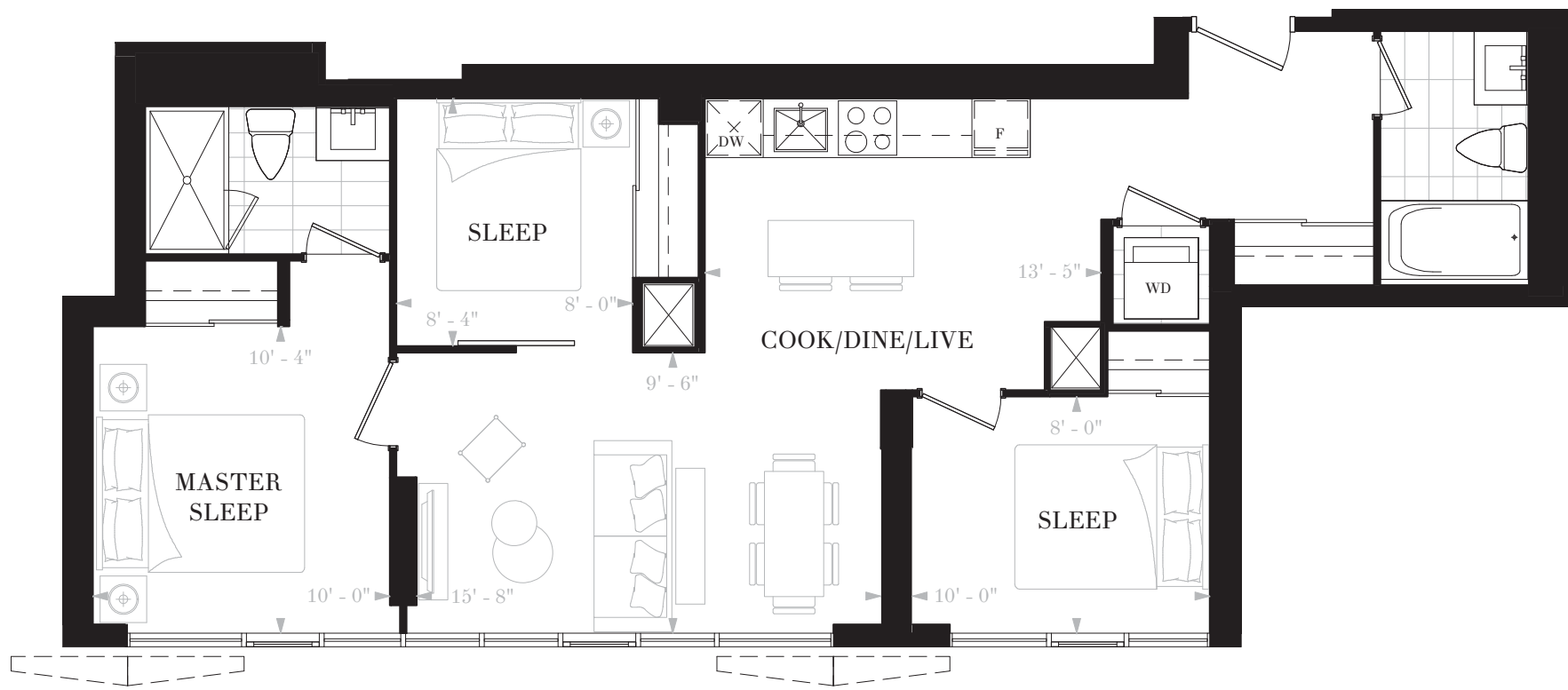
FLOORS 12-13, 16-17,  
20-21, 24-25, 28-29, 32-33



# NOBU

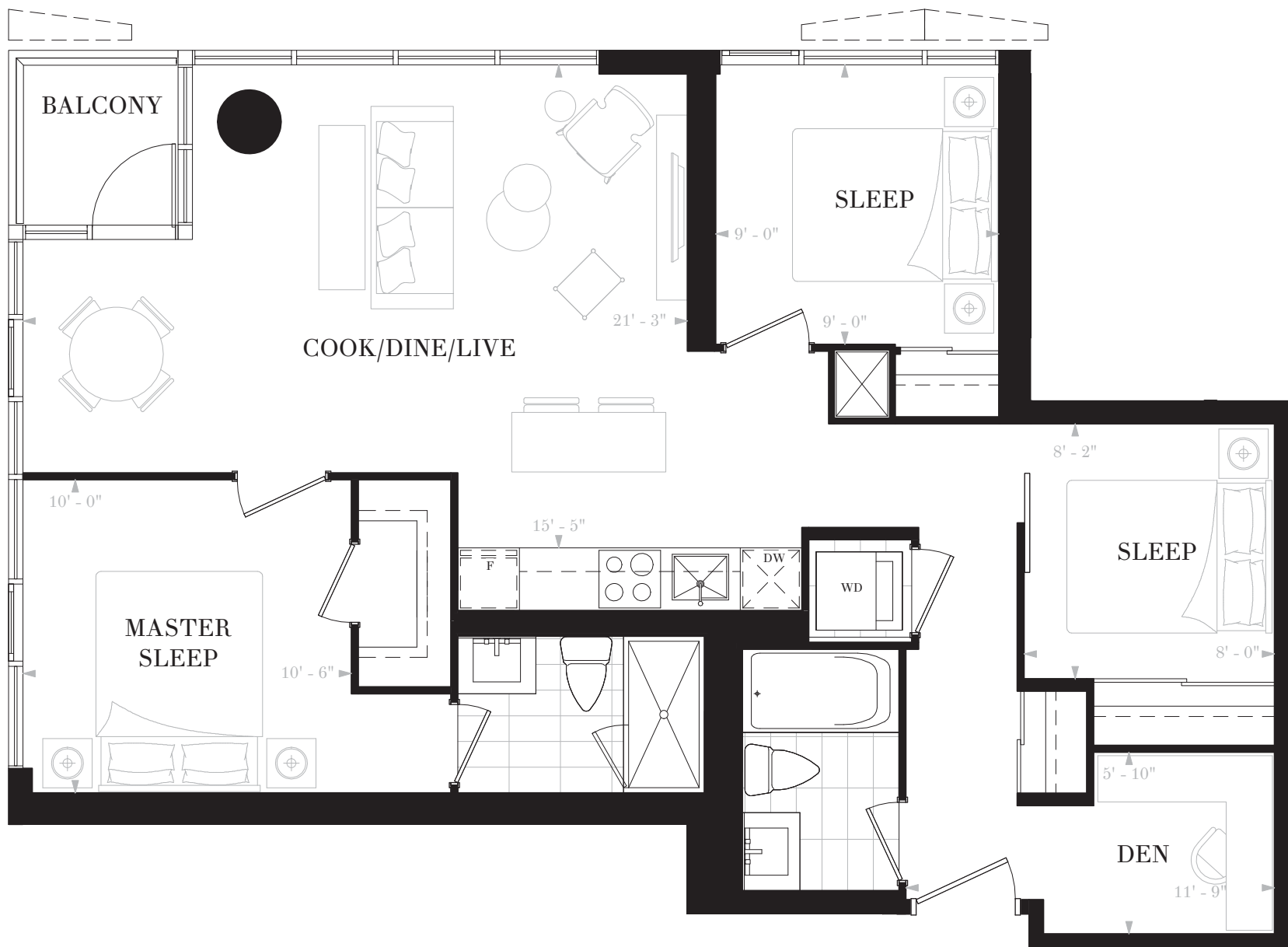
RESIDENCES  
TORONTO

**SUITE E3B**  
 3 BEDROOMS  
 2 BATHS  
 INTERIOR: 864 SF



# NOBU

RESIDENCES  
TORONTO



**SUITE E3D**

3 BEDROOMS & DEN

2 BATHS

INTERIOR: 929 SF

BALCONY: 28 SF

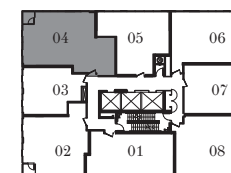
TOTAL: 957 SF



FLOORS 20-21, 24-25



FLOORS 22-23, 26-27



FLOORS 20-27

NOBURESIDENCES.CA

Any stated areas and/or dimensions shown are approximate only and subject to normal construction variances. Actual usable floor space may vary from any stated or depicted floor area. The layout of the suite may be reversed depending on the location of the unit within the project. Any furniture depicted is for illustration purposes only and does not necessarily reflect the electrical plan of the unit. Windows behind the cladding, installed as a design element, may be spandrel or vision glass. The view from or through the windows to the exterior may be partially obstructed by materials affixed to the exterior cladding of the building as part of an overall design element. Any and all sizes and/or specifications are subject to change without notice. All illustrations are artist's concept only. E. & O. E. May 2017



# NOBU

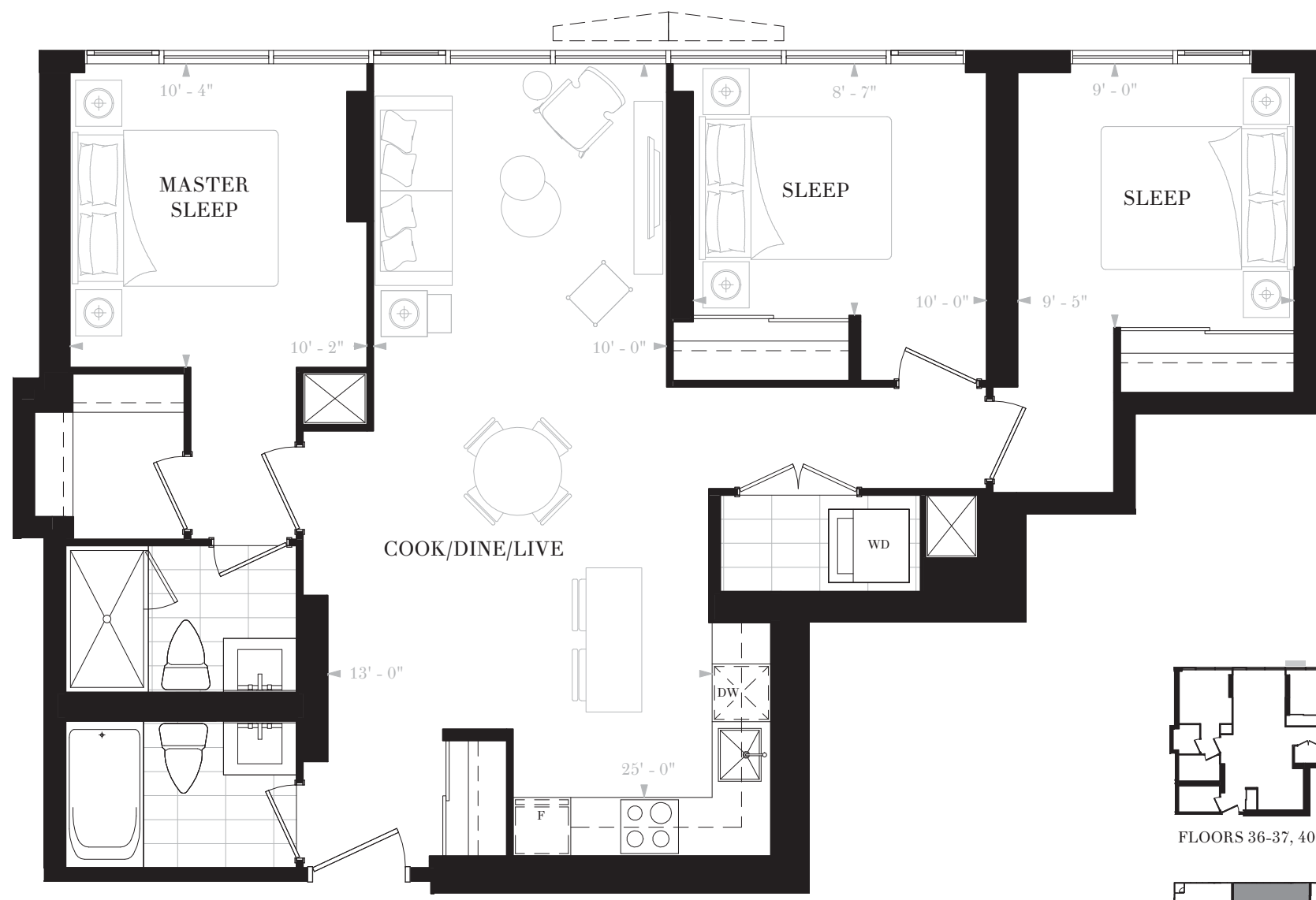
RESIDENCES  
TORONTO

**SUITE E3E**

3 BEDROOMS

2 BATHS

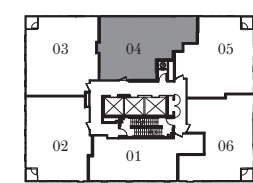
INTERIOR: 1011 SF



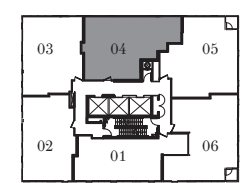
FLOORS 36-37, 40-41, 44-45



FLOORS 38-39, 42-43



FLOORS 36-41



FLOORS 42-45

**NOBURESIDENCES.CA**

Any stated areas and/or dimensions shown are approximate only and subject to normal construction variances. Actual usable floor space may vary from any stated or depicted floor area. The layout of the suite may be reversed depending on the location of the unit within the project. Any furniture depicted is for illustration purposes only and does not necessarily reflect the electrical plan of the unit. Windows behind the cladding, installed as a design element, may be spandrel or vision glass. The view from or through the windows to the exterior may be partially obstructed by materials affixed to the exterior cladding of the building as part of an overall design element. Any and all sizes and/or specifications are subject to change without notice. All illustrations are artist's concept only. E. & O. E. May 2017



# NOBU

RESIDENCES  
TORONTO

**SUITE E3F**

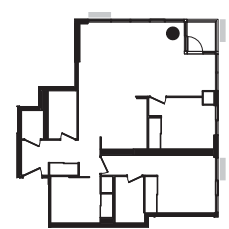
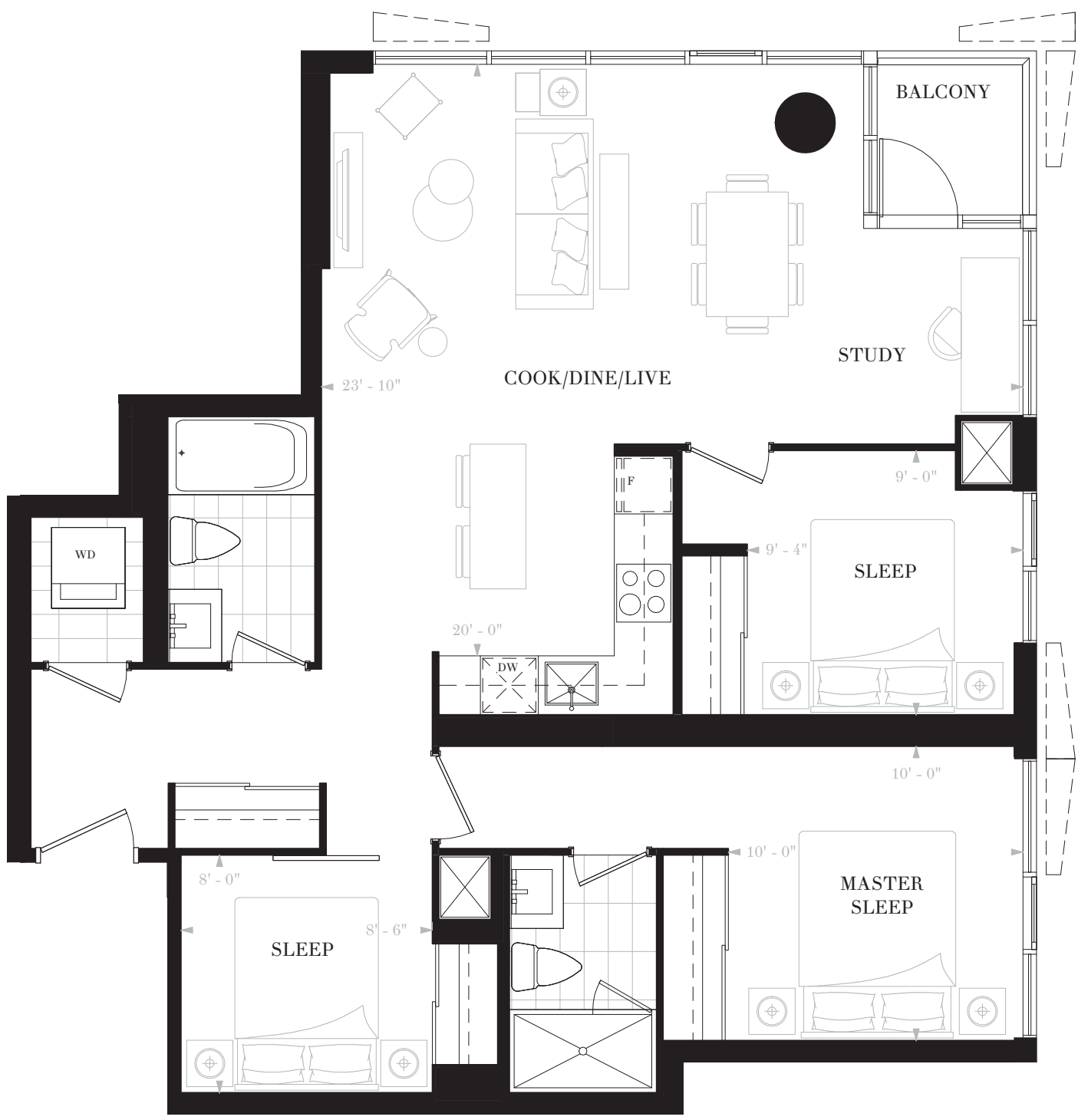
3 BEDROOMS

2 BATHS

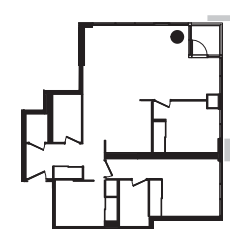
INTERIOR: 1015 SF

BALCONY: 28 SF

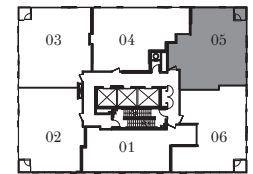
TOTAL: 1043 SF



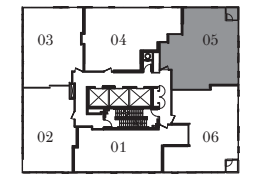
FLOORS 36-37, 40-41, 44-45



FLOORS 38-39, 42-43



FLOORS 36-41



FLOORS 42-45

NOBURESIDENCES.CA

Any stated areas and/or dimensions shown are approximate only and subject to normal construction variances. Actual usable floor space may vary from any stated or depicted floor area. The layout of the suite may be reversed depending on the location of the unit within the project. Any furniture depicted is for illustration purposes only and does not necessarily reflect the electrical plan of the unit. Windows behind the cladding, installed as a design element, may be spandrel or vision glass. The view from or through the windows to the exterior may be partially obstructed by materials affixed to the exterior cladding of the building as part of an overall design element. Any and all sizes and/or specifications are subject to change without notice. All illustrations are artist's concept only. E. & O. E. May 2017



# NOBU

RESIDENCES  
TORONTO

**SUITE E3G**

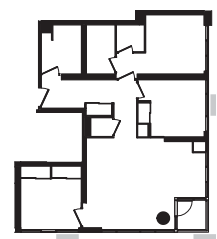
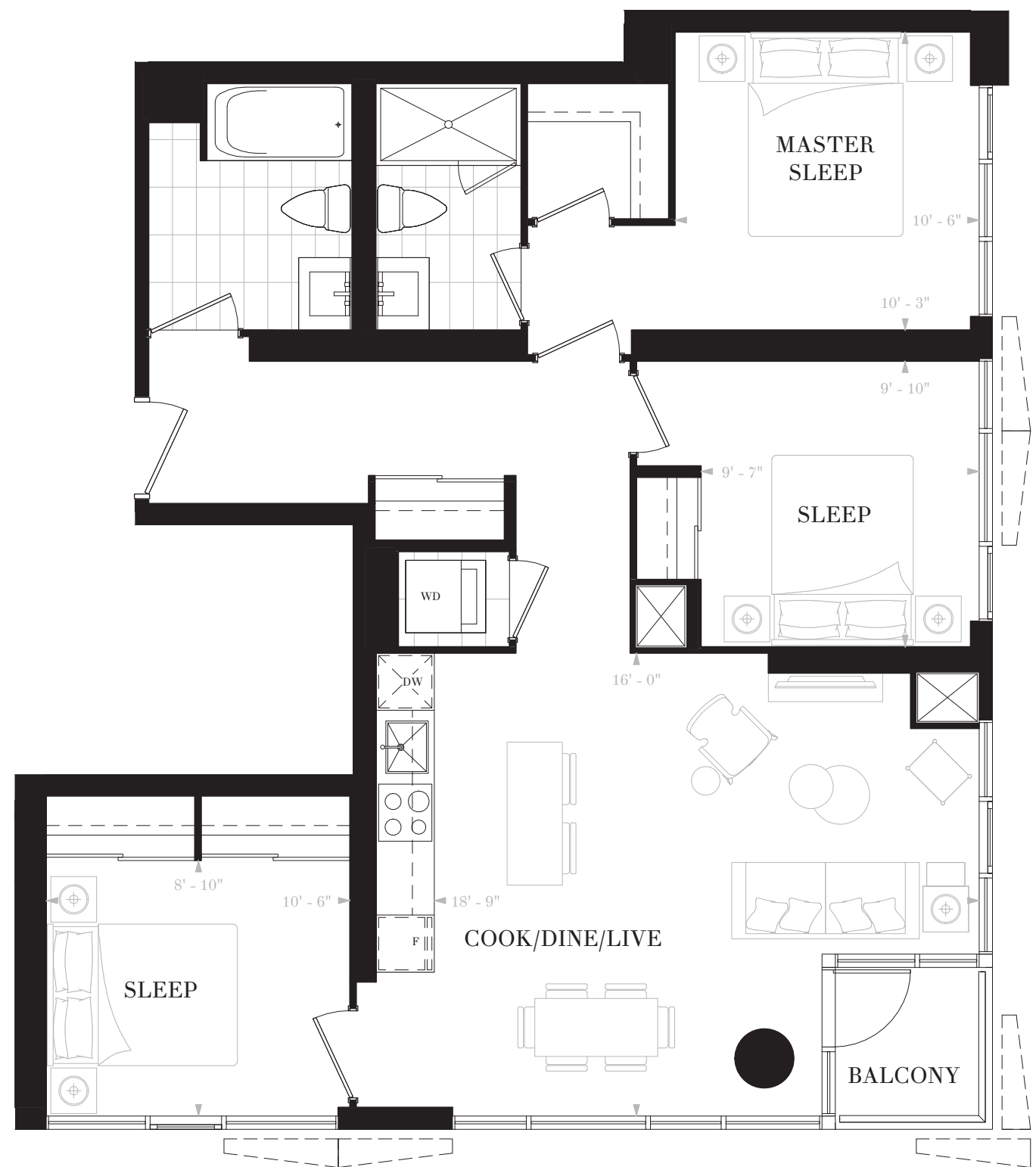
3 BEDROOMS

2 BATHS

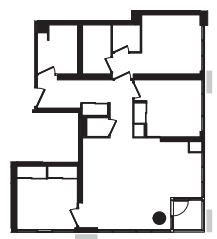
INTERIOR: 1036 SF

BALCONY: 28 SF

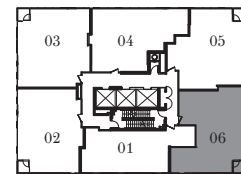
TOTAL: 1064 SF



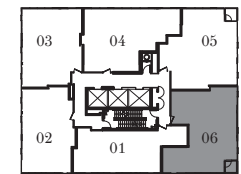
FLOORS 36-37, 40-41, 44-45



FLOORS 38-39, 42-43



FLOORS 36-41



FLOORS 42-45



# NOBU

RESIDENCES  
TORONTO

**SUITE E3H**

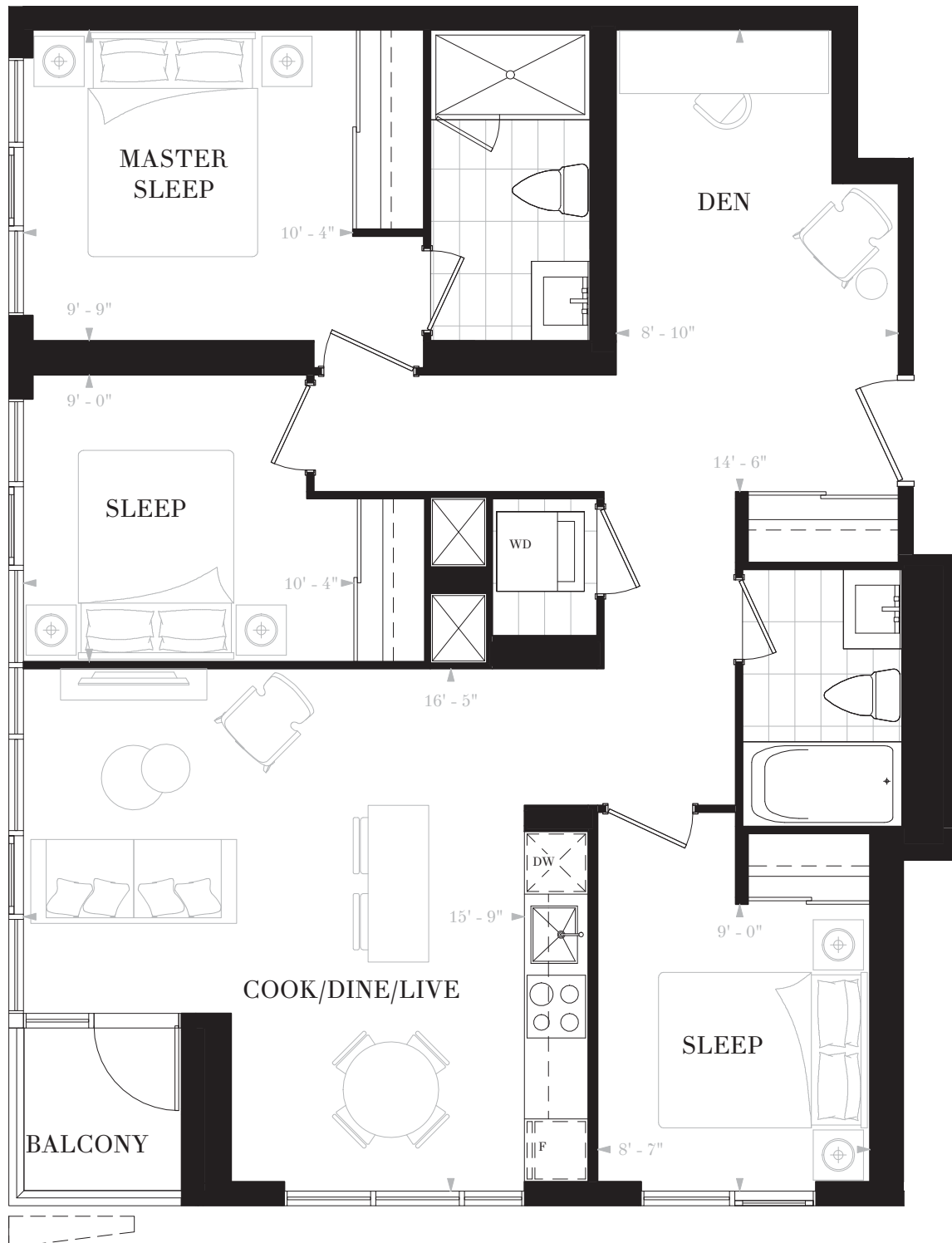
3 BEDROOMS & DEN

2 BATHS

INTERIOR: 1049 SF

BALCONY: 28 SF

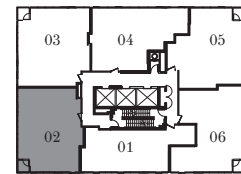
TOTAL: 1077 SF



FLOORS 36-37, 40-41



FLOORS 38-39



FLOORS 36-41





# NOBU

RESIDENCES  
TORONTO

**SUITE E3J**

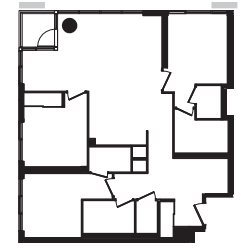
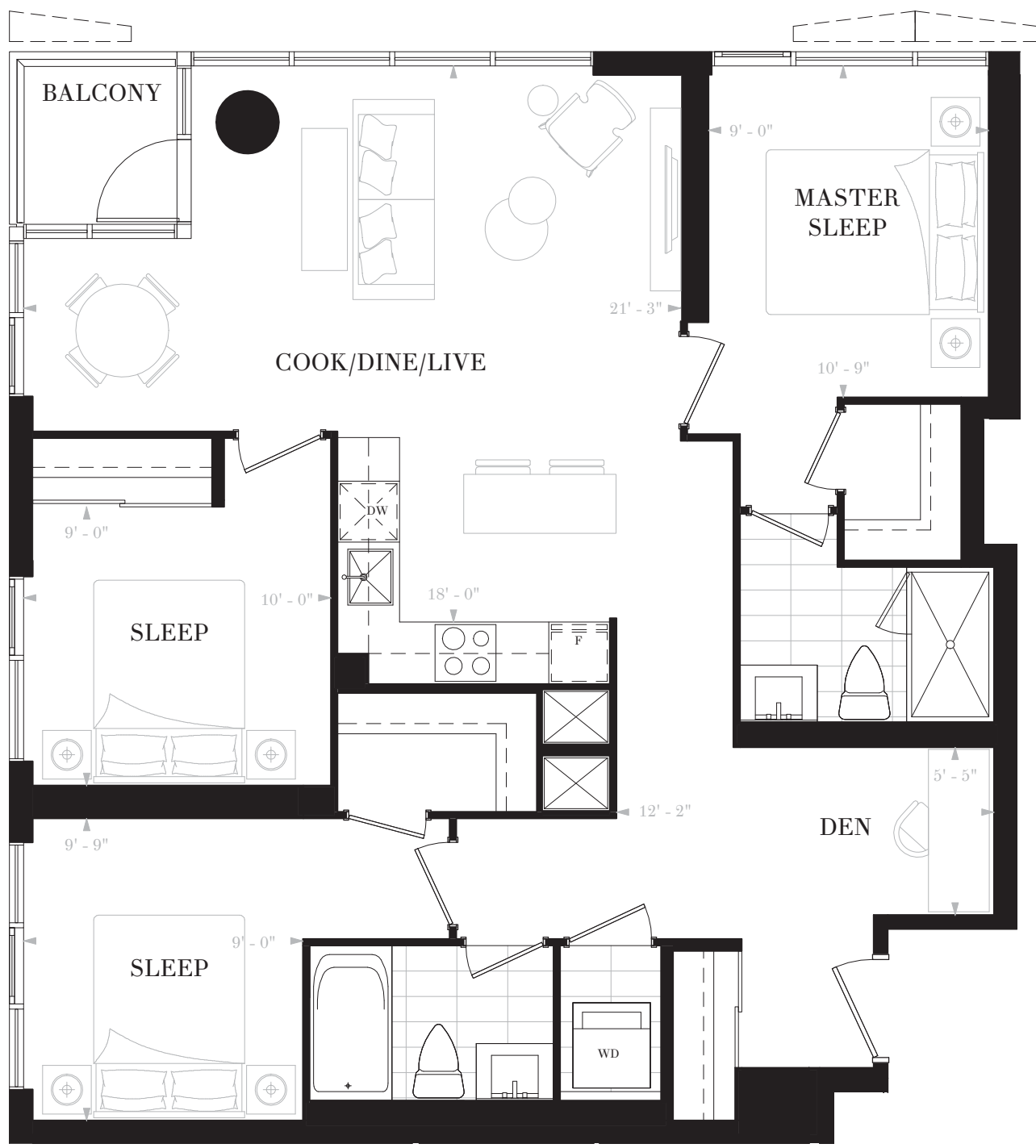
3 BEDROOMS & DEN

2 BATHS

INTERIOR: 1091 SF

BALCONY: 28 SF

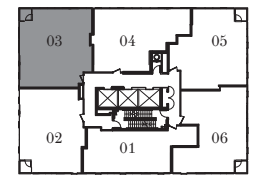
TOTAL: 1119 SF



FLOORS 36-37, 40



FLOORS 38-39



FLOORS 36-40



# NOBU

RESIDENCES  
TORONTO

**SUITE E3K**

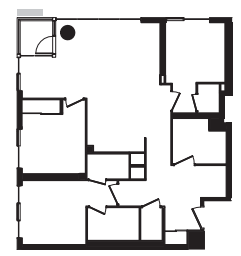
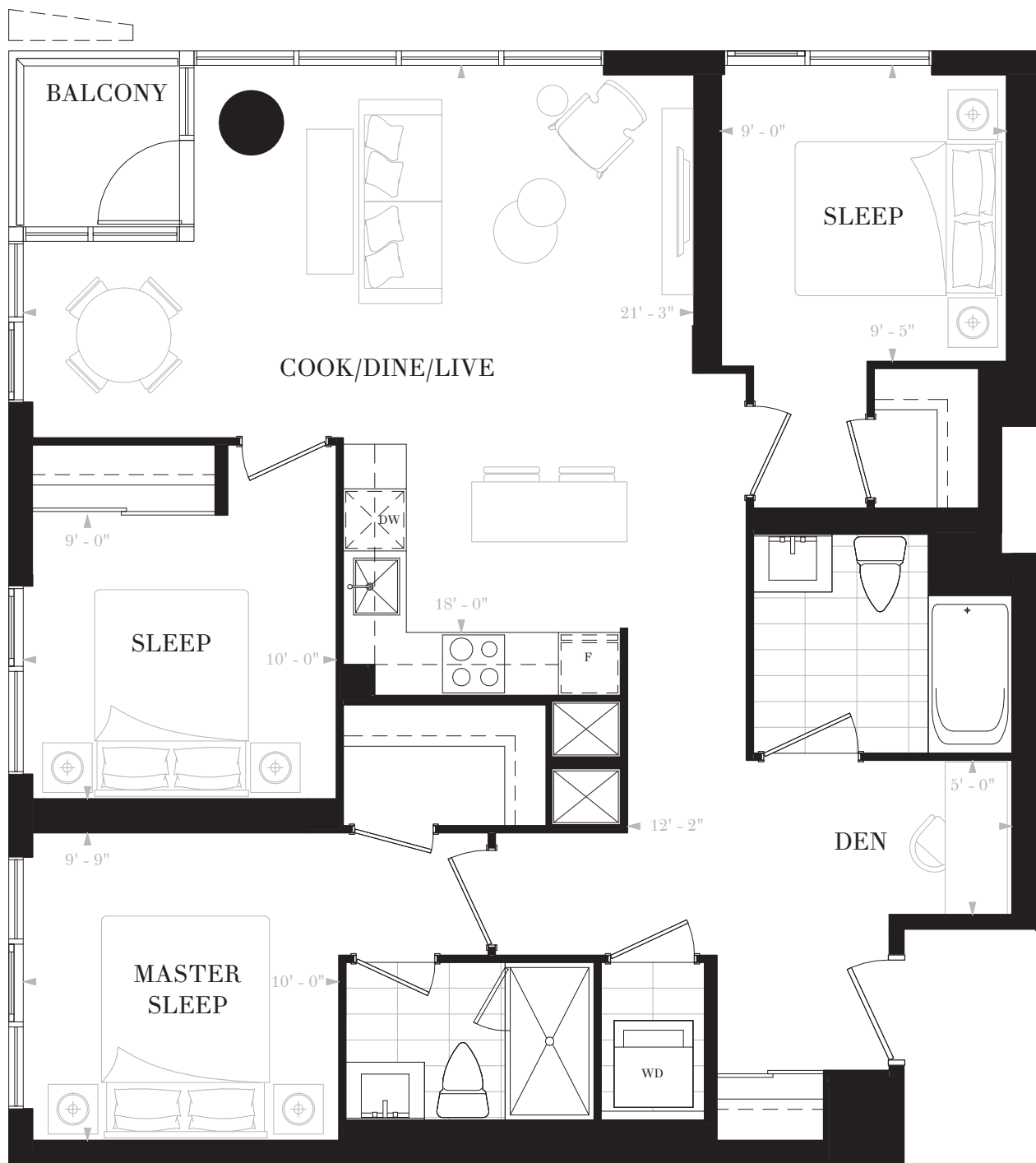
3 BEDROOMS & DEN

2 BATHS

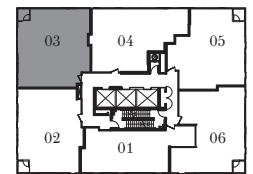
INTERIOR: 1091 SF

BALCONY: 28 SF

TOTAL: 1119 SF



FLOOR 41



FLOOR 41

