

AQUALUNA™

LUXURY BY THE LAKE









A SPECTACULAR LAKESIDE LOCATION

AQUALUNA™





OWN THE HORIZON

AQUALUNA™





VIEWS, GLORIOUS VIEWS

AQUALUNA™



















# FLOORPLANS

---

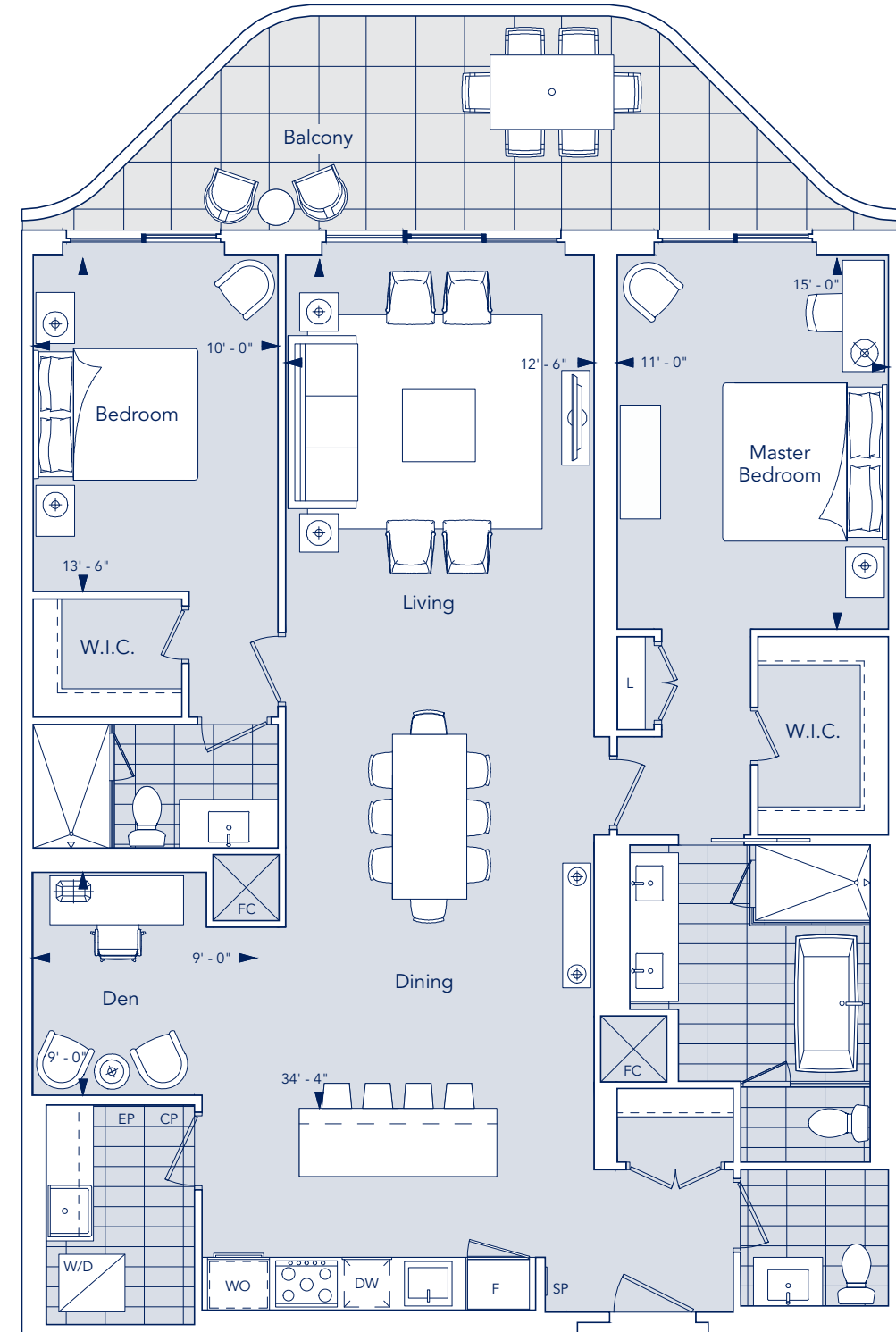
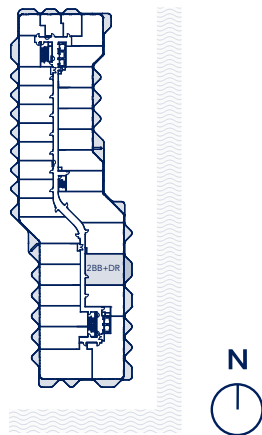


# 2BB+DR

2 Bedroom + Den, 2.5 Bathroom, 1 Balcony

Indoor Living Space	1,582 ft <sup>2</sup>
Outdoor Living	200 ft <sup>2</sup>
Total Living Space	1,782 ft <sup>2</sup>

FLOOR 3, 4



All dimensions are approximate and subject to normal construction variances. Dimensions may exceed the useable floor area. Sizes and specifications subject to change without notice. Furniture is displayed for illustration purposes only and does not necessarily reflect the electrical plan for the suite. Suites are sold unfurnished. Balcony and Façade variations may apply, contact a sales representative for further details. E. & O. E. Tridel®, Tridel Built for Life® and Tridel Built Green. Built for Life® are registered trademarks of Tridel and used under license. ©Tridel 2018. All rights reserved. May 2018.

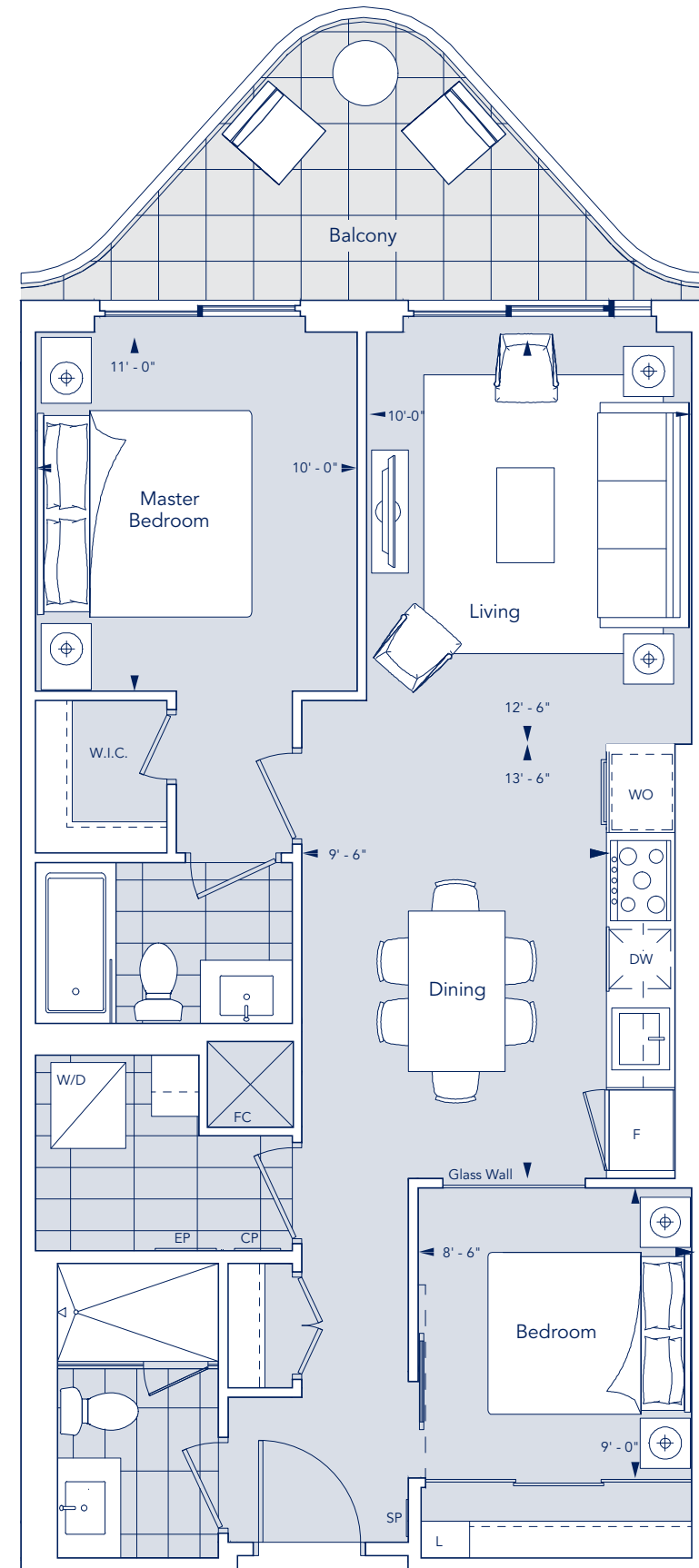
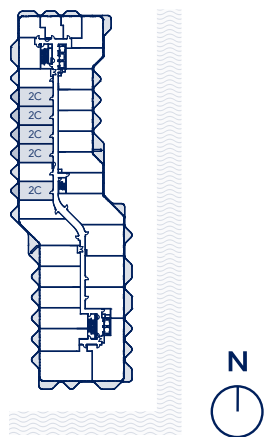


# 2C

2 Bedroom, 2 Bathroom, 1 Balcony

Indoor Living Space	840 ft <sup>2</sup>
Outdoor Living	90 ft <sup>2</sup>
Total Living Space	930 ft <sup>2</sup>

FLOOR 3-6



All dimensions are approximate and subject to normal construction variances. Dimensions may exceed the useable floor area. Sizes and specifications subject to change without notice. Furniture is displayed for illustration purposes only and does not necessarily reflect the electrical plan for the suite. Suites are sold unfurnished. Balcony and Façade variations may apply, contact a sales representative for further details. E. & O. E. Tridel®, Tridel Built for Life® and Tridel Built Green. Built for Life® are registered trademarks of Tridel and used under license. ©Tridel 2018. All rights reserved. May 2018.

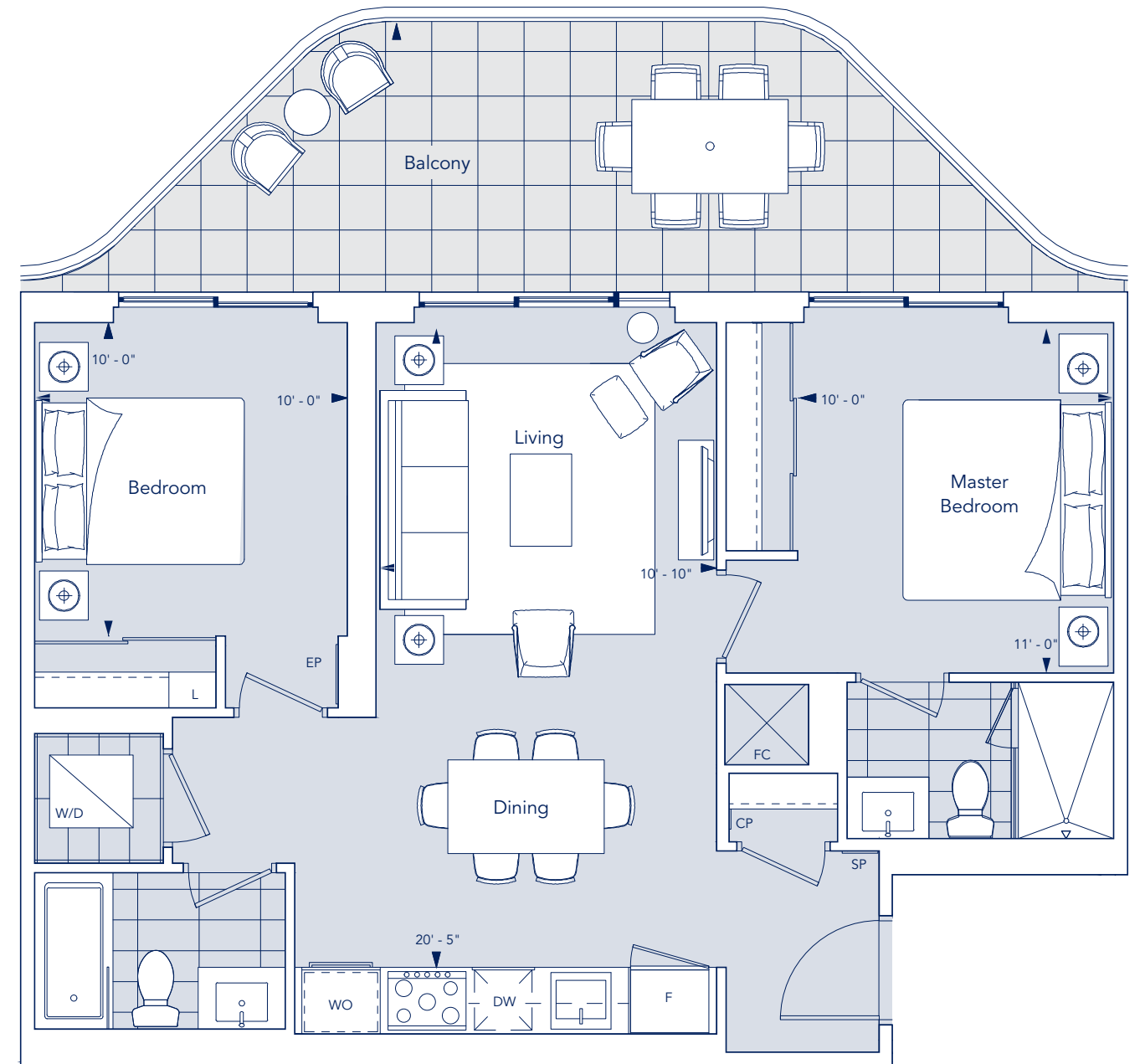
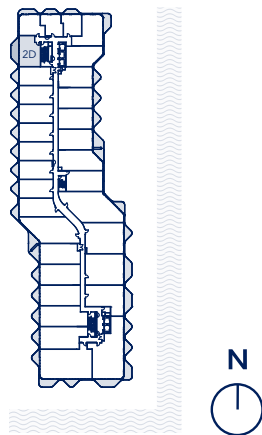


# 2D

2 Bedroom, 2 Bathroom, 1 Balcony

Indoor Living Space 850 ft<sup>2</sup>  
Outdoor Living 200 ft<sup>2</sup>  
Total Living Space 1,050 ft<sup>2</sup>

FLOOR 3, 5, 6, 8, 10



All dimensions are approximate and subject to normal construction variances. Dimensions may exceed the useable floor area. Sizes and specifications subject to change without notice. Furniture is displayed for illustration purposes only and does not necessarily reflect the electrical plan for the suite. Suites are sold unfurnished. Balcony and façade variations may apply, contact a sales representative for further details. E. & O. E. Tridel®, Tridel Built for Life® and Tridel Built Green. Built for Life® are registered trademarks of Tridel and used under license. ©Tridel 2018. All rights reserved. May 2018.

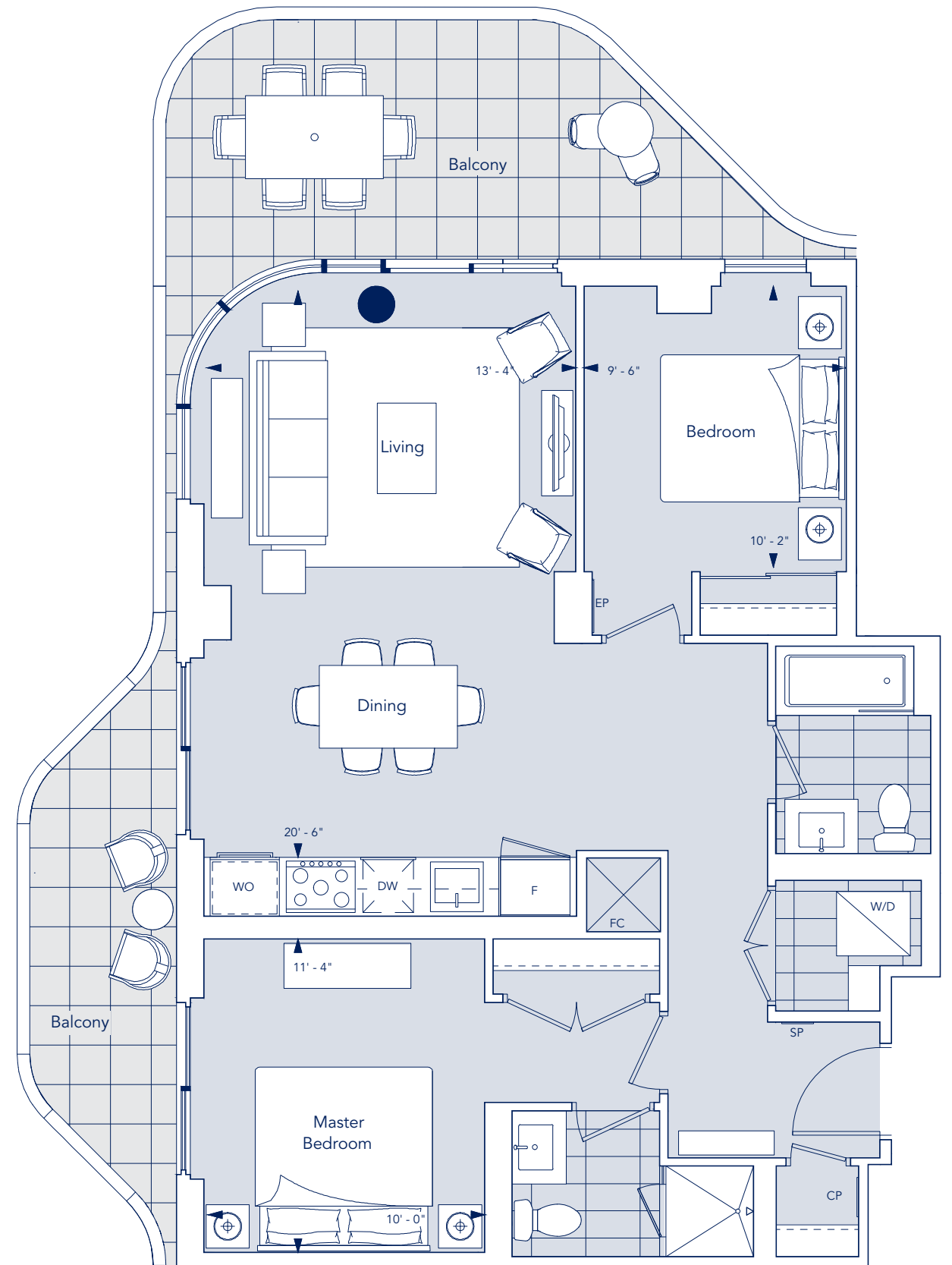
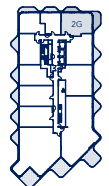


# 2G

2 Bedroom, 2 Bathroom, 2 Balcony

Indoor Living Space 942 ft<sup>2</sup>  
Outdoor Living 250 ft<sup>2</sup>  
Total Living Space 1,192 ft<sup>2</sup>

FLOOR 7, 9, 11



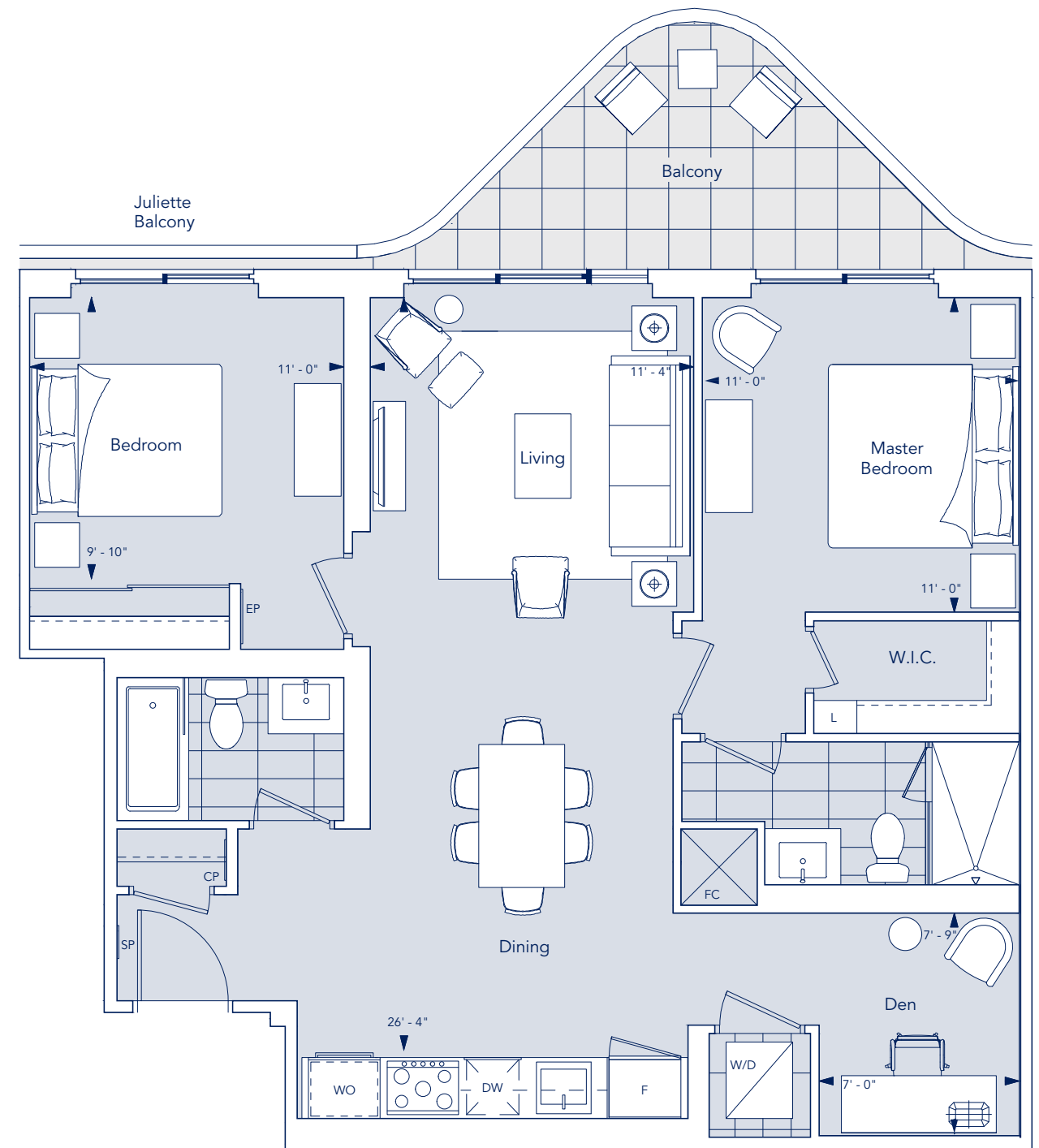
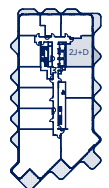


# 2J+D

2 Bedroom + Den, 2 Bathroom, 1 Balcony

Indoor Living Space	1,023 ft <sup>2</sup>
Outdoor Living	100 ft <sup>2</sup>
Total Living Space	1,123 ft <sup>2</sup>

FLOOR 7



All dimensions are approximate and subject to normal construction variances. Dimensions may exceed the useable floor area. Sizes and specifications subject to change without notice. Furniture is displayed for illustration purposes only and does not necessarily reflect the electrical plan for the suite. Suites are sold unfurnished. Balcony and Façade variations may apply, contact a sales representative for further details. E. & O. E. Tridel®, Tridel Built for Life® and Tridel Built Green. Built for Life® are registered trademarks of Tridel and used under license. ©Tridel 2018. All rights reserved. May 2018.

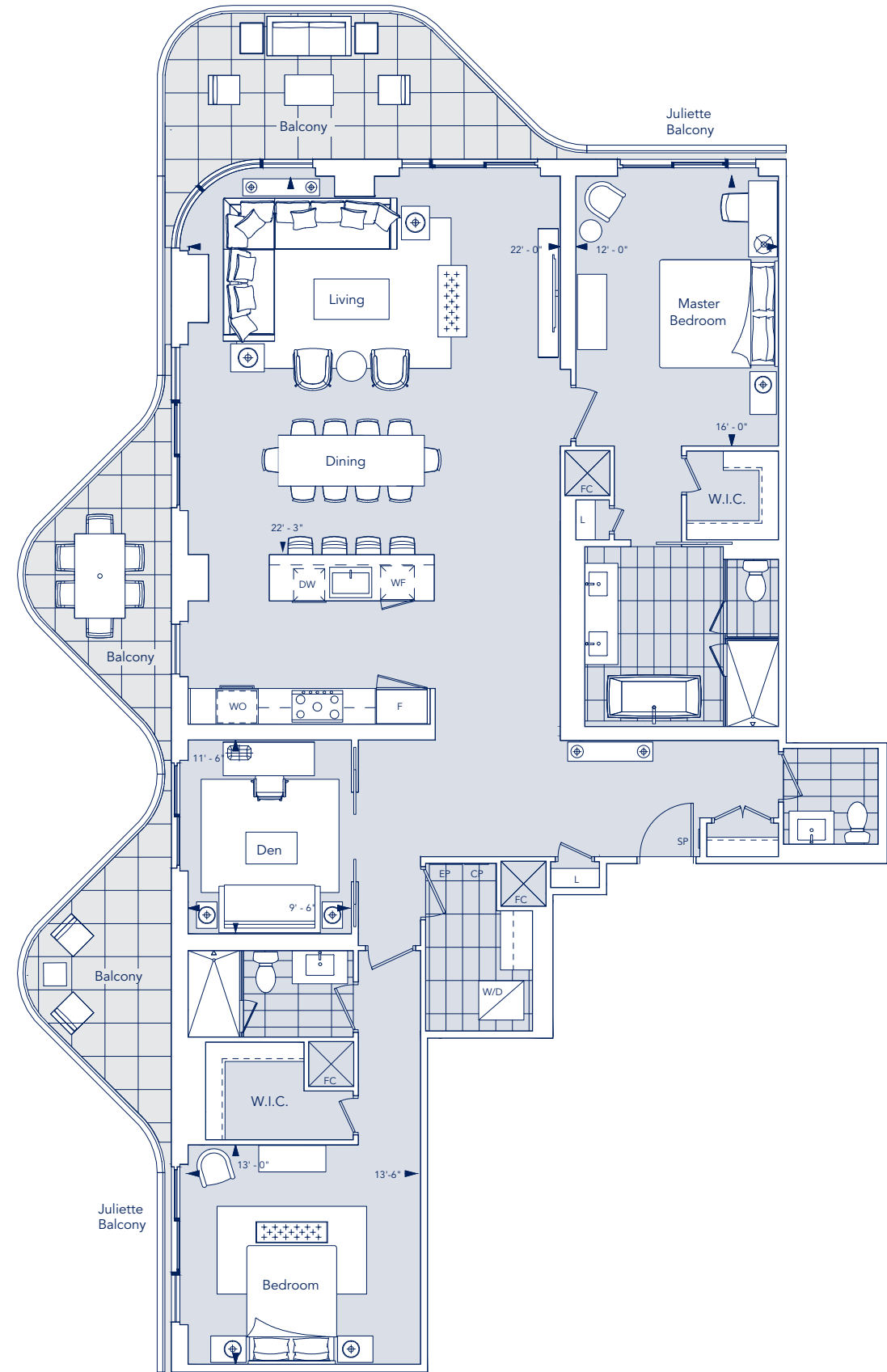
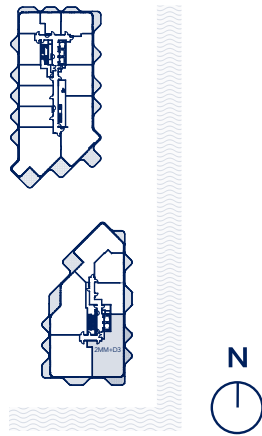


# 2MM+D3

2 Bedroom + Den, 2.5 Bathroom, 3 Balcony

Indoor Living Space	2,121 ft <sup>2</sup>
Outdoor Living	370 ft <sup>2</sup>
Total Living Space	2,491 ft <sup>2</sup>

FLOOR 7, 9



All dimensions are approximate and subject to normal construction variances. Dimensions may exceed the useable floor area. Sizes and specifications subject to change without notice. Furniture is displayed for illustration purposes only and does not necessarily reflect the electrical plan for the suite. Suites are sold unfurnished. Balcony and Façade variations may apply, contact a sales representative for further details. E. & O. E. Tridel®, Tridel Built for Life® and Tridel Built Green. Built for Life® are registered trademarks of Tridel and used under license. ©Tridel 2018. All rights reserved. May 2018.

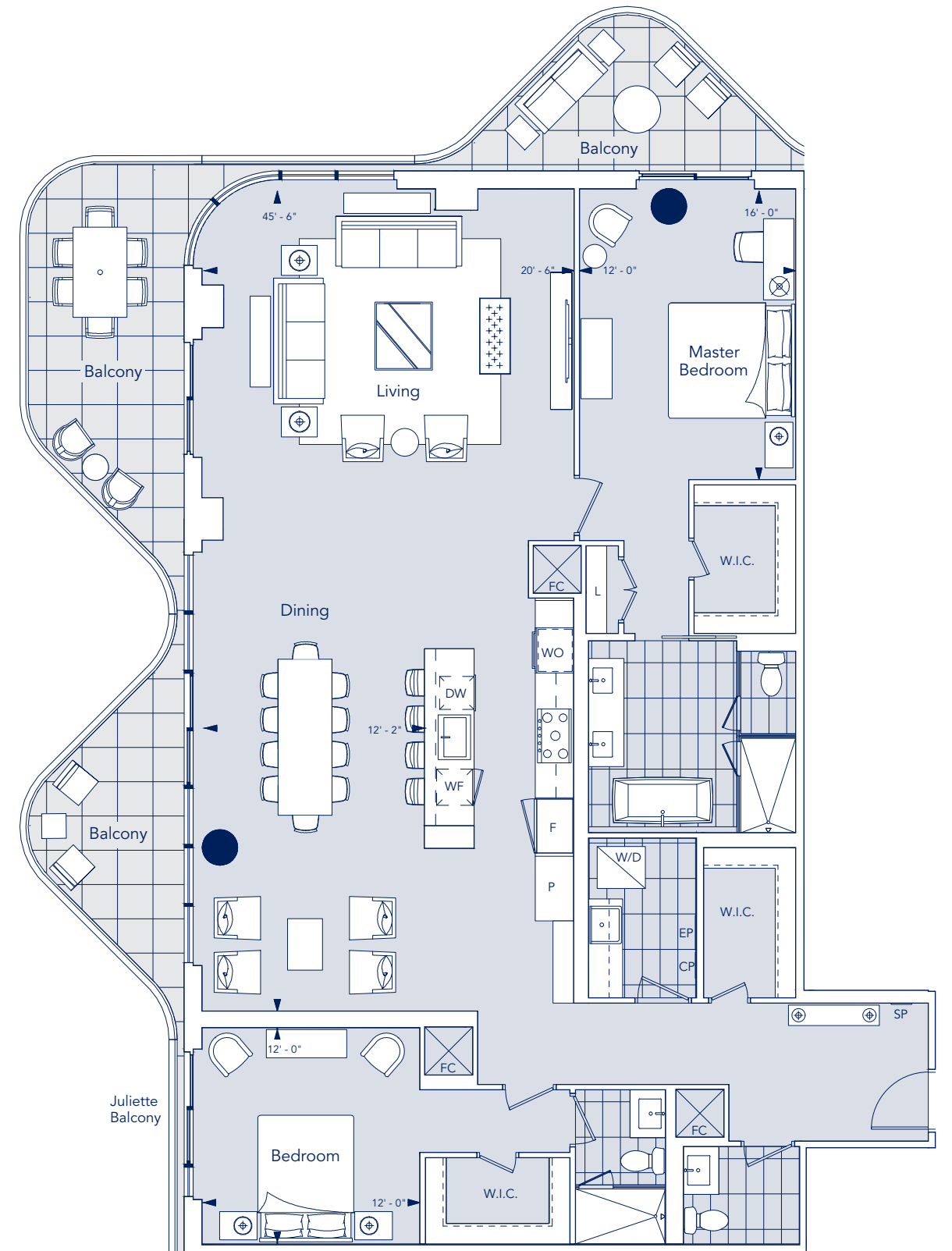
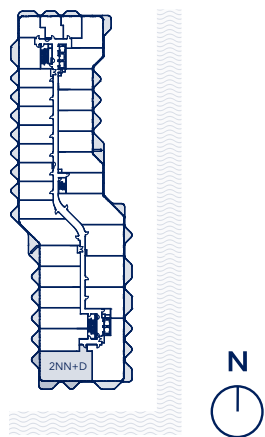


# 2NN

2 Bedroom, 2.5 Bathroom, 3 Balcony

Indoor Living Space 2,125 ft<sup>2</sup>  
Outdoor Living 370 ft<sup>2</sup>  
Total Living Space 2,495 ft<sup>2</sup>

FLOOR 3



All dimensions are approximate and subject to normal construction variances. Dimensions may exceed the useable floor area. Sizes and specifications subject to change without notice. Furniture is displayed for illustration purposes only and does not necessarily reflect the electrical plan for the suite. Suites are sold unfurnished. Balcony and Façade variations may apply, contact a sales representative for further details. E. & O. E. Tridel®, Tridel Built for Life® and Tridel Built Green. Built for Life® are registered trademarks of Tridel and used under license. ©Tridel 2018. All rights reserved. May 2018.

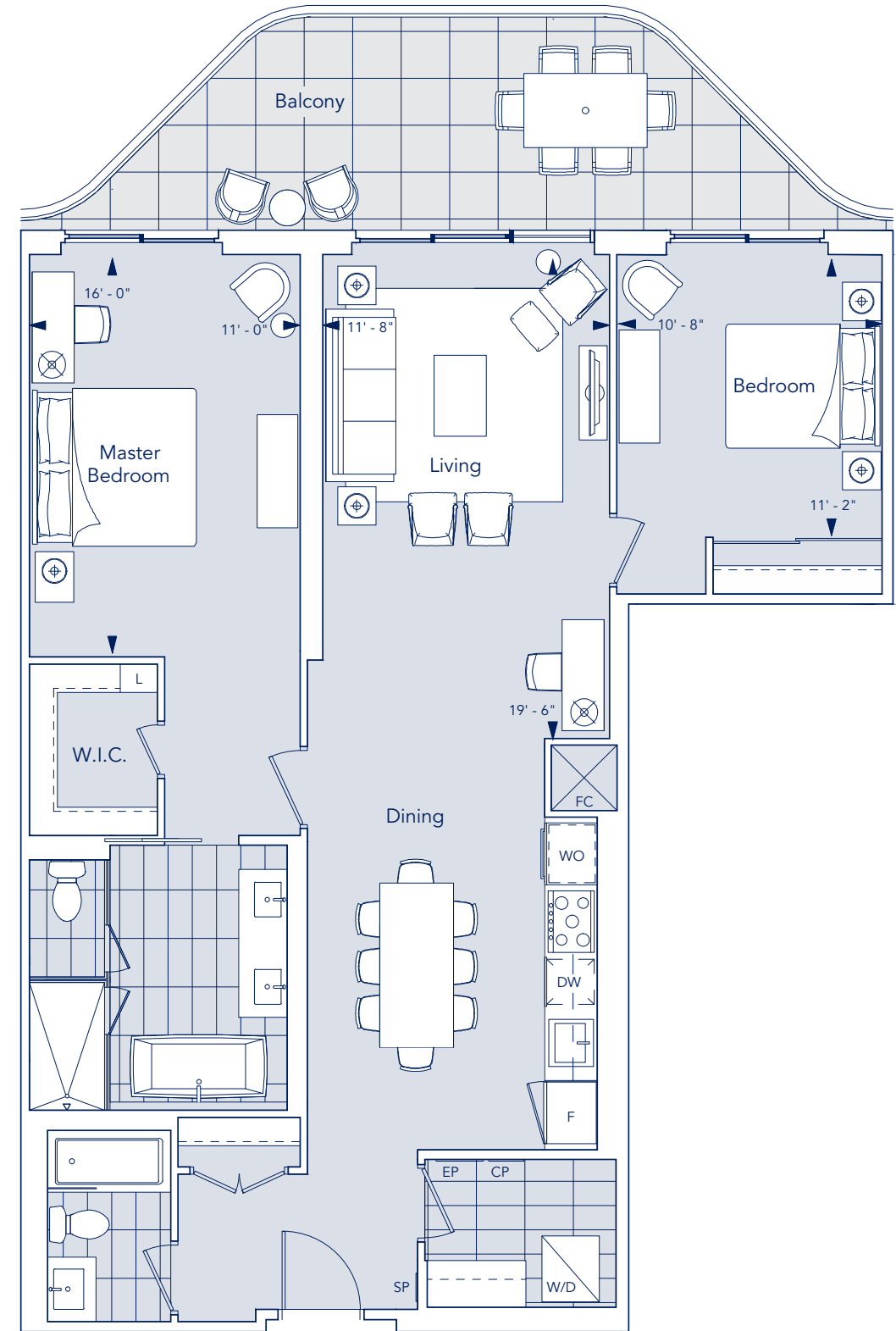
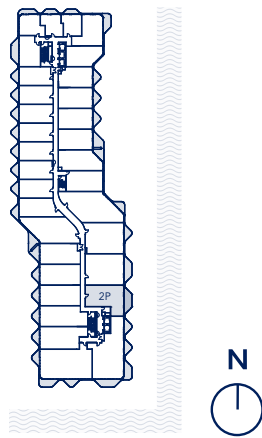


# 2P

2 Bedroom, 2 Bathroom, 1 Balcony

Indoor Living Space 1,284 ft<sup>2</sup>  
Outdoor Living 200 ft<sup>2</sup>  
Total Living Space 1,484 ft<sup>2</sup>

FLOOR 3



All dimensions are approximate and subject to normal construction variances. Dimensions may exceed the useable floor area. Sizes and specifications subject to change without notice. Furniture is displayed for illustration purposes only and does not necessarily reflect the electrical plan for the suite. Suites are sold unfurnished. Balcony and façade variations may apply, contact a sales representative for further details. E. & O. E. Tridel®, Tridel Built for Life® and Tridel Built Green. Built for Life® are registered trademarks of Tridel and used under license. ©Tridel 2018. All rights reserved. May 2018.

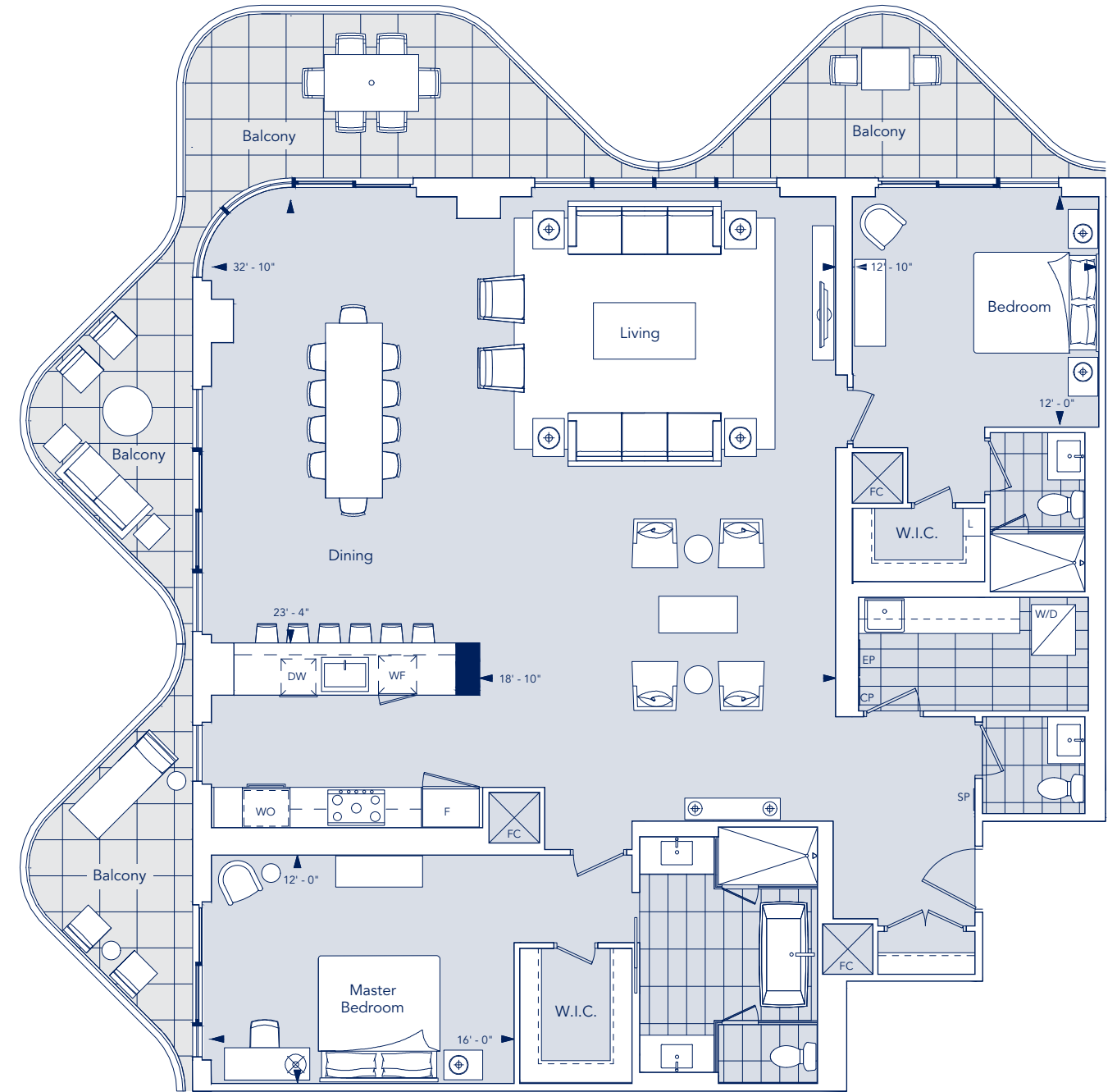
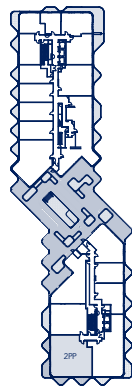


# 2PP

2 Bedroom, 2.5 Bathroom, 4 Balcony

Indoor Living Space 2,186 ft<sup>2</sup>  
Outdoor Living 470 ft<sup>2</sup>  
Total Living Space 2,656 ft<sup>2</sup>

FLOOR 6



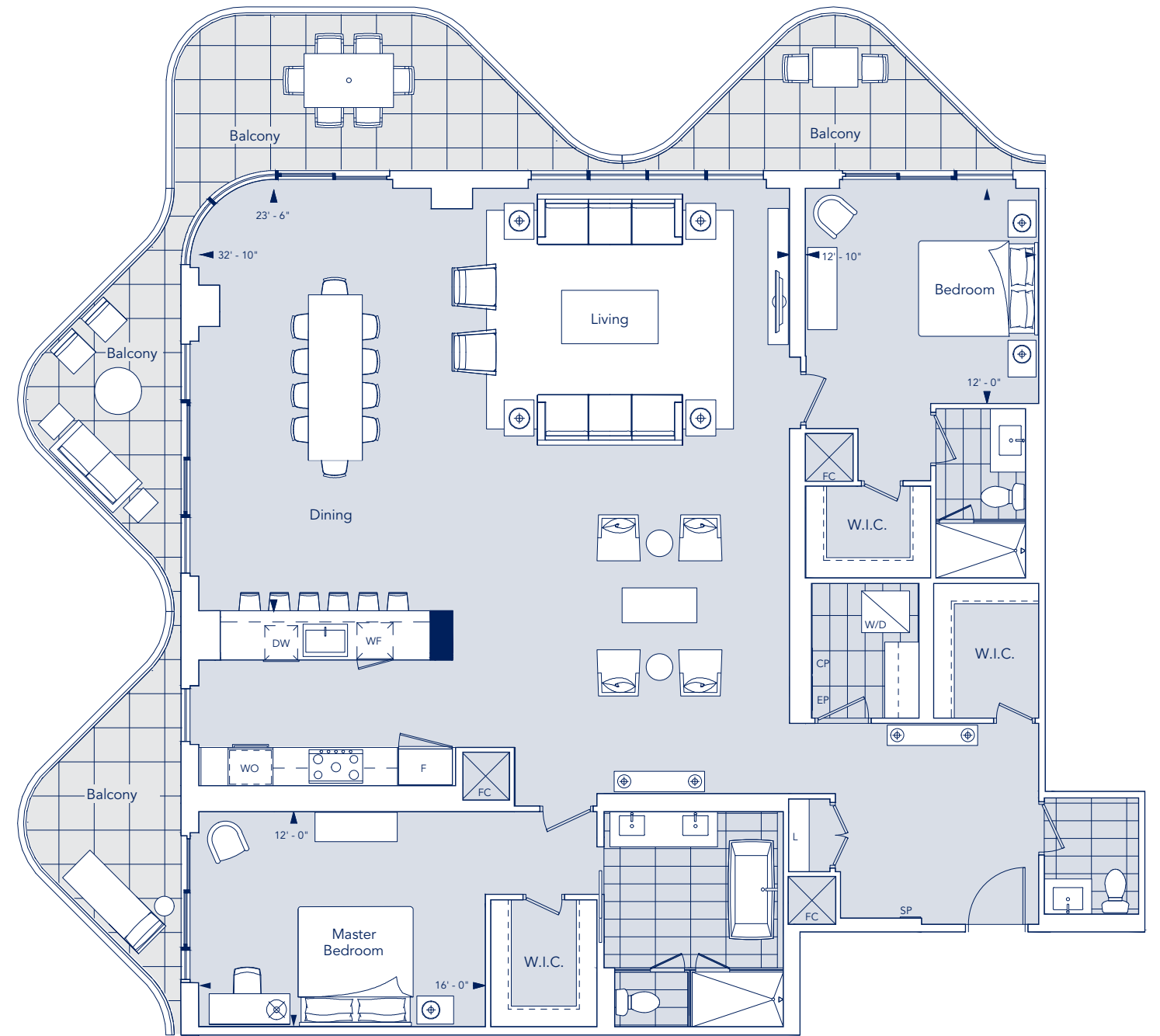
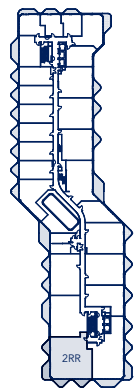


# 2RR

2 Bedroom, 2.5 Bathroom, 4 Balcony

Indoor Living Space 2,288 ft<sup>2</sup>  
Outdoor Living 470 ft<sup>2</sup>  
Total Living Space 2,758 ft<sup>2</sup>

FLOOR 5



All dimensions are approximate and subject to normal construction variances. Dimensions may exceed the useable floor area. Sizes and specifications subject to change without notice. Furniture is displayed for illustration purposes only and does not necessarily reflect the electrical plan for the suite. Suites are sold unfurnished. Balcony and façade variations may apply, contact a sales representative for further details. E. & O. E. Tridel®, Tridel Built for Life® and Tridel Built Green. Built for Life® are registered trademarks of Tridel and used under license. ©Tridel 2018. All rights reserved. May 2018.

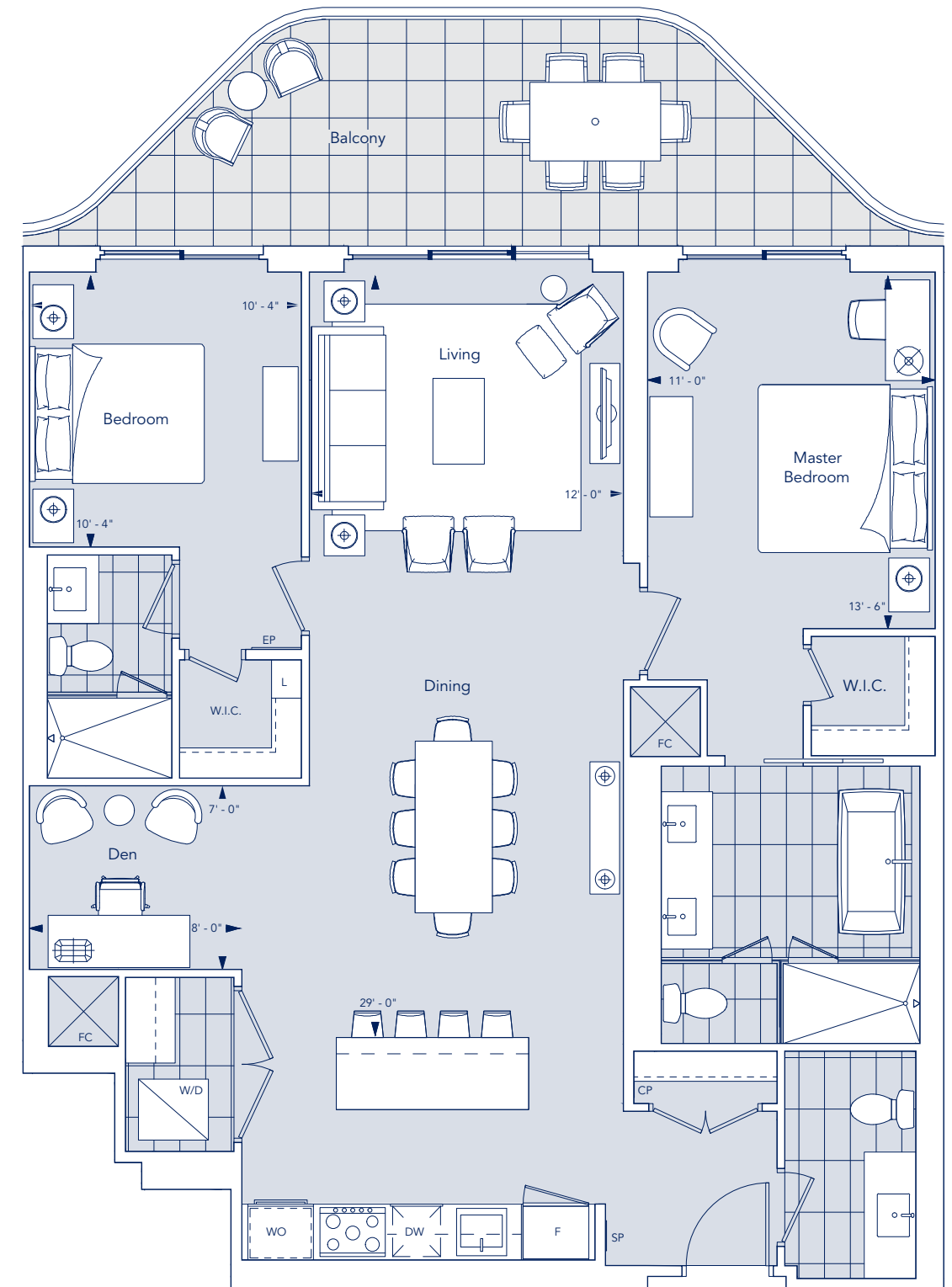
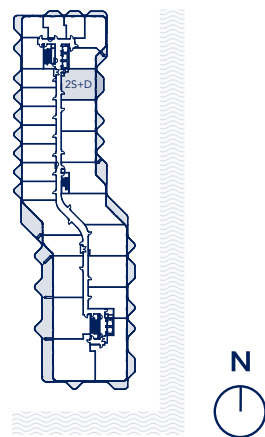


# 2S+D

2 Bedroom + Den, 2.5 Bathroom, 1 Balcony

Indoor Living Space	1,367 ft <sup>2</sup>
Outdoor Living	200 ft <sup>2</sup>
Total Living Space	1,567 ft <sup>2</sup>

FLOOR 4



All dimensions are approximate and subject to normal construction variances. Dimensions may exceed the useable floor area. Sizes and specifications subject to change without notice. Furniture is displayed for illustration purposes only and does not necessarily reflect the electrical plan for the suite. Suites are sold unfurnished. Balcony and façade variations may apply, contact a sales representative for further details. E. & O. E. Tridel®, Tridel Built for Life® and Tridel Built Green. Built for Life® are registered trademarks of Tridel and used under license. ©Tridel 2018. All rights reserved. May 2018.

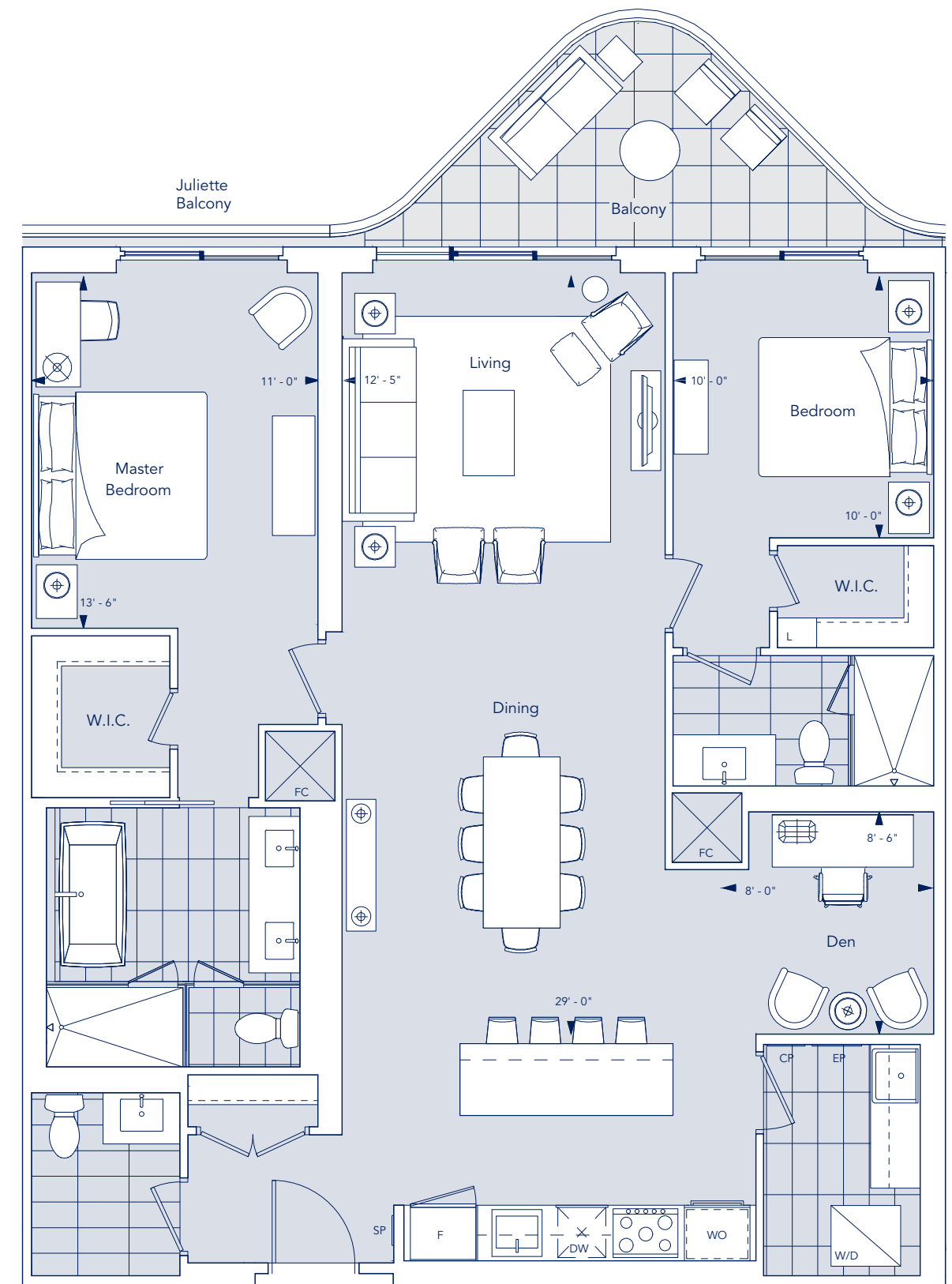
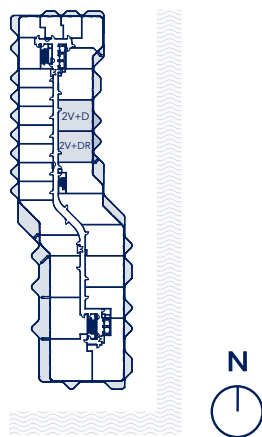


# 2V+D / 2V+DR

2 Bedroom + Den, 2.5 Bathroom, 1 Balcony

Indoor Living Space	1,410 ft <sup>2</sup>
Outdoor Living	100 ft <sup>2</sup>
Total Living Space	1,510 ft <sup>2</sup>

FLOOR 4



All dimensions are approximate and subject to normal construction variances. Dimensions may exceed the useable floor area. Sizes and specifications subject to change without notice. Furniture is displayed for illustration purposes only and does not necessarily reflect the electrical plan for the suite. Suites are sold unfurnished. Balcony and Façade variations may apply, contact a sales representative for further details. E. & O. E. Tridel®, Tridel Built for Life® and Tridel Built Green. Built for Life® are registered trademarks of Tridel and used under license. ©Tridel 2018. All rights reserved. May 2018.





# THE LOBBY

CREATE YOUR BESPOKE  
AQUALUNA SUITE

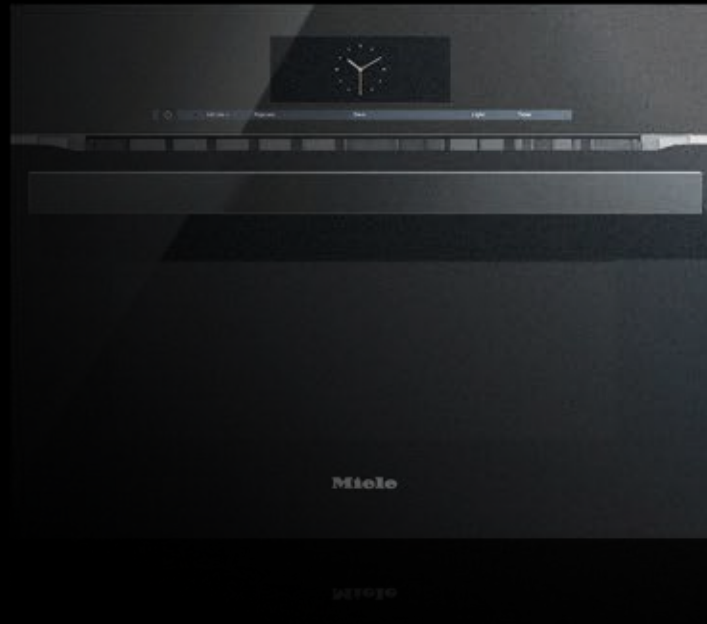
Get Expert Advice at The Lobby

Consult with our award-winning design team at The Lobby, opening this summer. An exceptional space conceived exclusively for you to envision and personalize the Aqualuna home of your dreams.

Experience each feature and finish in person, across the sprawling 8,000-square foot floor. Use all your senses combined with the expertise of our talented designers to guide the choices that will make your home distinctly yours. Exactly how you always imagined it.



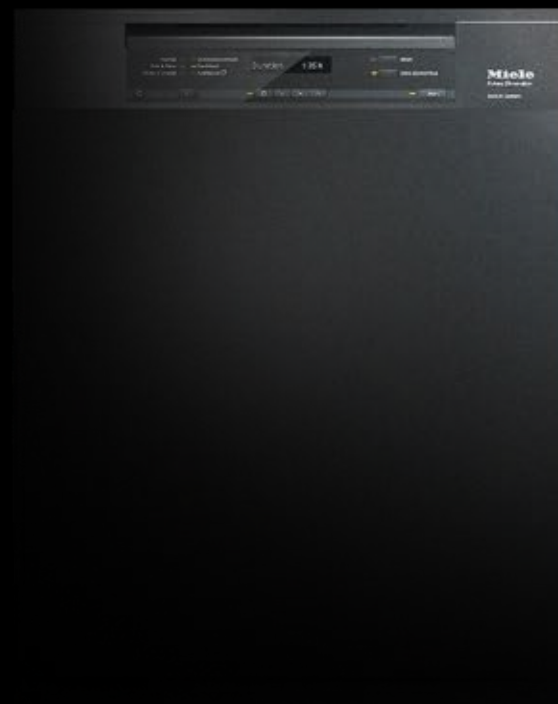




# AQUALUNA™

## PREMIUM APPLIANCES THAT SHINE IN THE MOONLIGHT

Every Aqualuna home is outfitted with the utmost in luxury, from the gourmet chef-style kitchens to the spa-inspired bathrooms. Your suite is complete with top of the line appliances that add a touch of elegance and effortless to every activity.





ELEVATED LIVING



CHEF-INSPIRED KITCHENS



EXQUISITE INTERIORS



SMART HOME

## EXTRAORDINARY FEATURES & FINISHES

### ELEVATED LIVING

Your Aqualuna home is designed with features and finishes to make each day, each room, and each view simply extraordinary. Your expansive outdoor terrace is complete with a gas line and hose bib, perfect for summertime barbecues and lush garden retreats. WiFi in common area and access to Waterfront Toronto's ultra high-speed community network keep you constantly connected.

### CHEF-INSPIRED KITCHENS

Aqualuna's gourmet kitchens feature highly-efficient, premium Miele appliances to make preparing every meal an event to look forward to. With a fully-integrated, paneled fridge and dishwasher plus a stainless steel built-in microwave, wall oven, and ceramic cooktop – these sleek Miele kitchens are every culinary enthusiast's dream.

### EXQUISITE INTERIORS

Sophisticated engineered hardwood flooring throughout your suite softens every step with an acoustic underlay, adding comfort and quiet. Spa-inspired ensuites and powder rooms feature beautiful porcelain or natural stone floor tile, vanity cabinetry, deep soaker tubs, and high pressure, temperature-controlled chrome showerheads to melt away the day.

### SMART HOME PEACE OF MIND

See who's at your door, adjust the temperature, call the front desk, get building updates and more – all from your in-home wall unit or the Tridel Connect smartphone app. Gain access to Aqualuna's common areas effortlessly with your phone as a key, while license plate ID grants your vehicle automatic entry to the building. Conveniently and securely enter your suite using a distinct access code. It's that easy.



