

Hines

TRIDEL
BUILT FOR LIFE

BAYSIDE | A HINES MASTER
TORONTO | PLANNED COMMUNITY.
Redefining life on the water's edge.

T2D

tridel.com

AQUALUNA[™]
LUXURY BY THE LAKE

LUXURY BY THE LAKE
ΥΝΝΤΥΝΘ



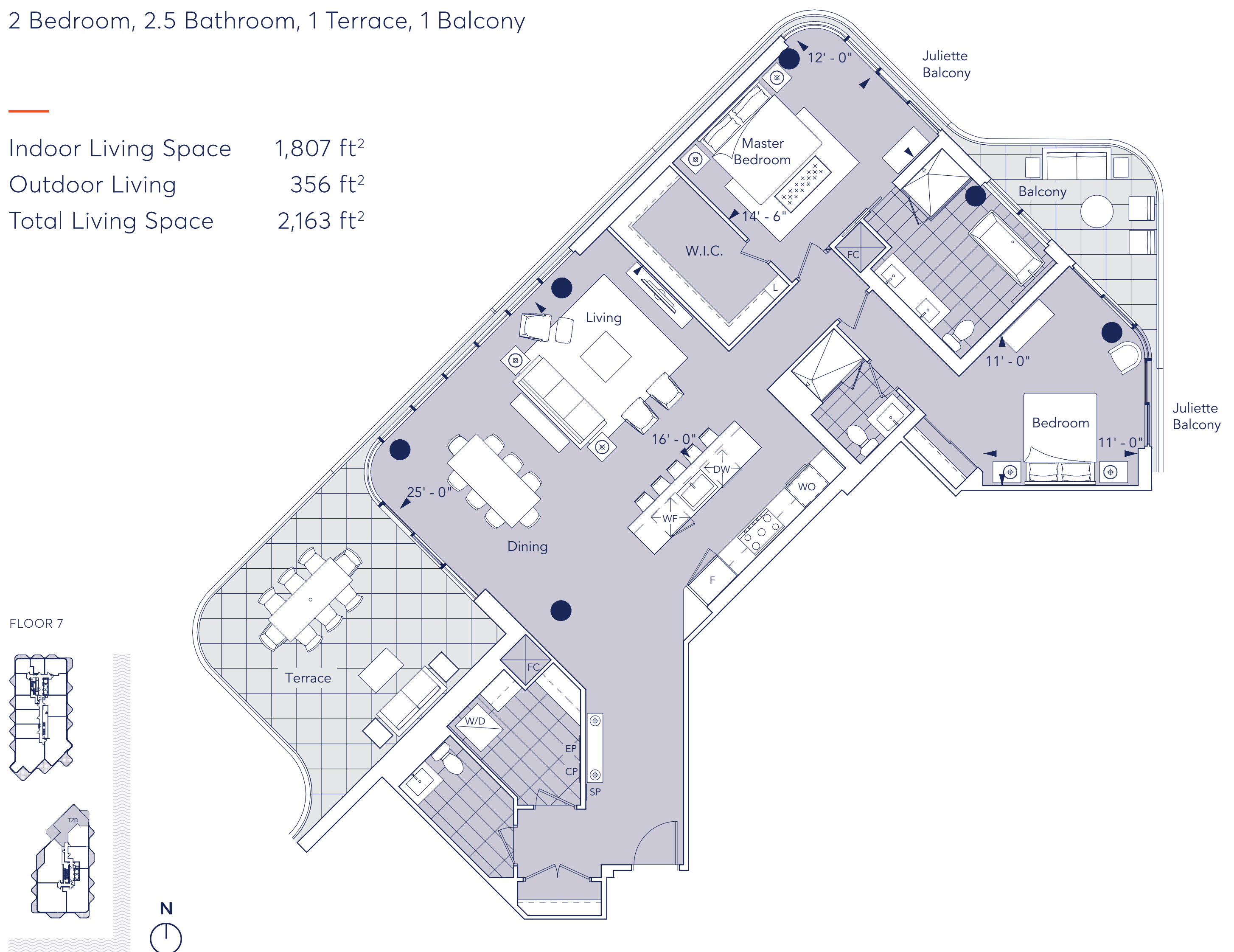
T2D

AQUALUNA™

LUXURY BY THE LAKE

2 Bedroom, 2.5 Bathroom, 1 Terrace, 1 Balcony

Indoor Living Space 1,807 ft²
Outdoor Living 356 ft²
Total Living Space 2,163 ft²



ELEVATED LIVING

Your Aqualuna home includes only the most extraordinary features and finishes. From a chef-inspired kitchen fully-equipped with a suite of premium Miele appliances, to quiet and comfortable acoustic engineered hardwood flooring, every refined detail creates a living experience that's simply a cut above.

Spacious terraces outfitted with a light fixture, gas line, and hose bib mean summertime barbecues and private garden retreats are just some of the possibilities waiting to be brought to life by your imagination. Innovative and intuitive smart home technology adds convenience and peace of mind to your every waking moment.

T2D

Tridel®, Tridel Built for Life® and Tridel Built Green, Built for Life® are registered trademarks of Tridel and used under license. ©Tridel 2018. All dimensions are approximate and subject to normal construction variances. Dimensions may exceed the useable floor area. Sizes and specifications subject to change without notice. Furniture is displayed for illustration purposes only and does not necessarily reflect the electrical plan for the suite. Suites are sold unfurnished. Balcony and Façade Variations may apply, contact a sales representative for further details. Furniture, BBQs and planter locations on terraces are for illustration purposes only and subject to change. E.&O.E. All rights reserved. May 2018.

Hines

TRIDEL
BUILT FOR LIFE

BAYSIDE | A HINES MASTER
TORONTO | PLANNED COMMUNITY.
Redefining life on the water's edge.

T2GG

tridel.com

AQUALUNA[™]
LUXURY BY THE LAKE

LUXURY BY THE LAKE
ΥΝΝΤΥΝΘ



T2GG

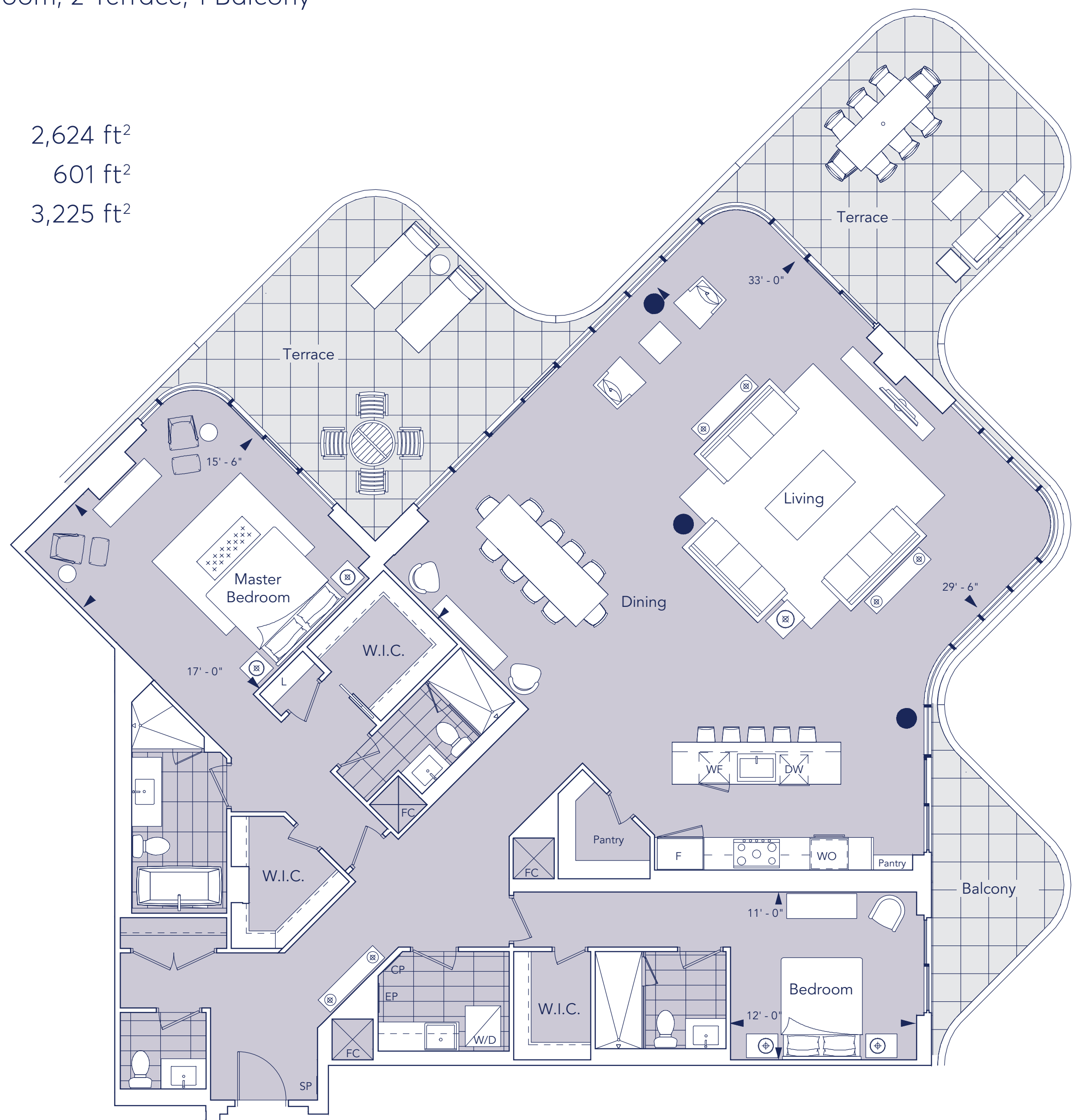
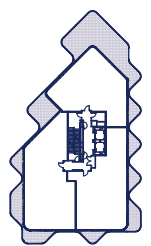
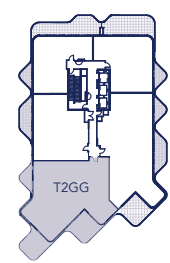
AQUALUNA™

LUXURY BY THE LAKE

2 Bedroom, 3.5 Bathroom, 2 Terrace, 1 Balcony

Indoor Living Space 2,624 ft²
 Outdoor Living 601 ft²
 Total Living Space 3,225 ft²

FLOOR 12



ELEVATED LIVING

Your Aqualuna home includes only the most extraordinary features and finishes. From a chef-inspired kitchen fully-equipped with a suite of premium Miele appliances, to quiet and comfortable acoustic engineered hardwood flooring, every refined detail creates a living experience that's simply a cut above.

Spacious terraces outfitted with a light fixture, gas line, and hose bib mean summertime barbecues and private garden retreats are just some of the possibilities waiting to be brought to life by your imagination. Innovative and intuitive smart home technology adds convenience and peace of mind to your every waking moment.

T2GG

Tridel®, Tridel Built for Life® and Tridel Built Green, Built for Life® are registered trademarks of Tridel and used under license. ©Tridel 2018. All dimensions are approximate and subject to normal construction variances. Dimensions may exceed the useable floor area. Sizes and specifications subject to change without notice. Furniture is displayed for illustration purposes only and does not necessarily reflect the electrical plan for the suite. Suites are sold unfurnished. Balcony and Façade Variations may apply, contact a sales representative for further details. Furniture, BBQs and planter locations on terraces are for illustration purposes only and subject to change. E.&O.E. All rights reserved. May 2018.

Hines

TRIDEL
BUILT FOR LIFE

BAYSIDE | A HINES MASTER
TORONTO | PLANNED COMMUNITY.
Redefining life on the water's edge.

T2H

tridel.com

AQUALUNA
LUXURY BY THE LAKE

LUXURY BY THE LAKE
ΑQUALUNA



T2H

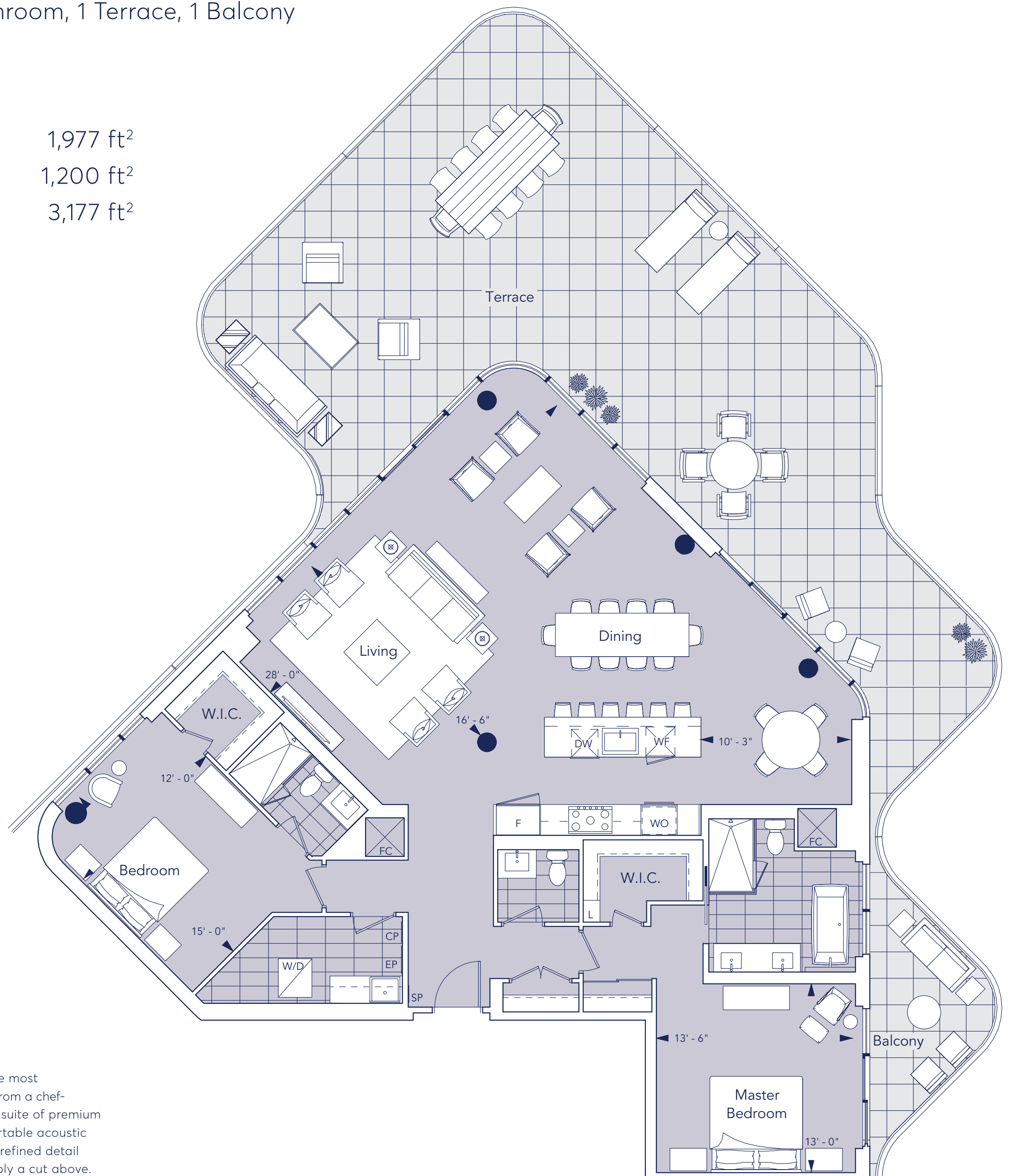
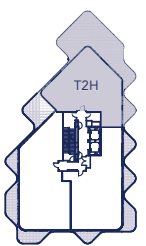
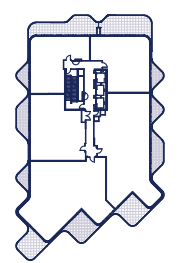
AQUALUNA™

LUXURY BY THE LAKE

2 Bedroom, 2.5 Bathroom, 1 Terrace, 1 Balcony

Indoor Living Space 1,977 ft²
 Outdoor Living 1,200 ft²
 Total Living Space 3,177 ft²

FLOOR 12



ELEVATED LIVING

Your Aqualuna home includes only the most extraordinary features and finishes. From a chef-inspired kitchen fully-equipped with a suite of premium Miele appliances, to quiet and comfortable acoustic engineered hardwood flooring, every refined detail creates a living experience that's simply a cut above.

Spacious terraces outfitted with a light fixture, gas line, and hose bib mean summertime barbecues and private garden retreats are just some of the possibilities waiting to be brought to life by your imagination. Innovative and intuitive smart home technology adds convenience and peace of mind to your every waking moment.

T2H

Tridel®, Tridel Built for Life® and Tridel Built Green. Built for Life® are registered trademarks of Tridel and used under license. ©Tridel 2018. All dimensions are approximate and subject to normal construction variances. Dimensions may exceed the useable floor area. Sizes and specifications subject to change without notice. Furniture is displayed for illustration purposes only and does not necessarily reflect the electrical plan for the suite. Suites are sold unfurnished. Balcony and Façade Variations may apply, contact a sales representative for further details. Furniture, BBQs and planter locations on terraces are for illustration purposes only and subject to change. E.&O.E. All rights reserved. May 2018.

Hines

TRIDEL
BUILT FOR LIFE

BAYSIDE | A HINES MASTER
TORONTO | PLANNED COMMUNITY.
Redefining life on the water's edge.

T2HH

tridel.com

AQUALUNA[™]
LUXURY BY THE LAKE

LUXURY BY THE LAKE
ΥΝΝΤΥΝΘ



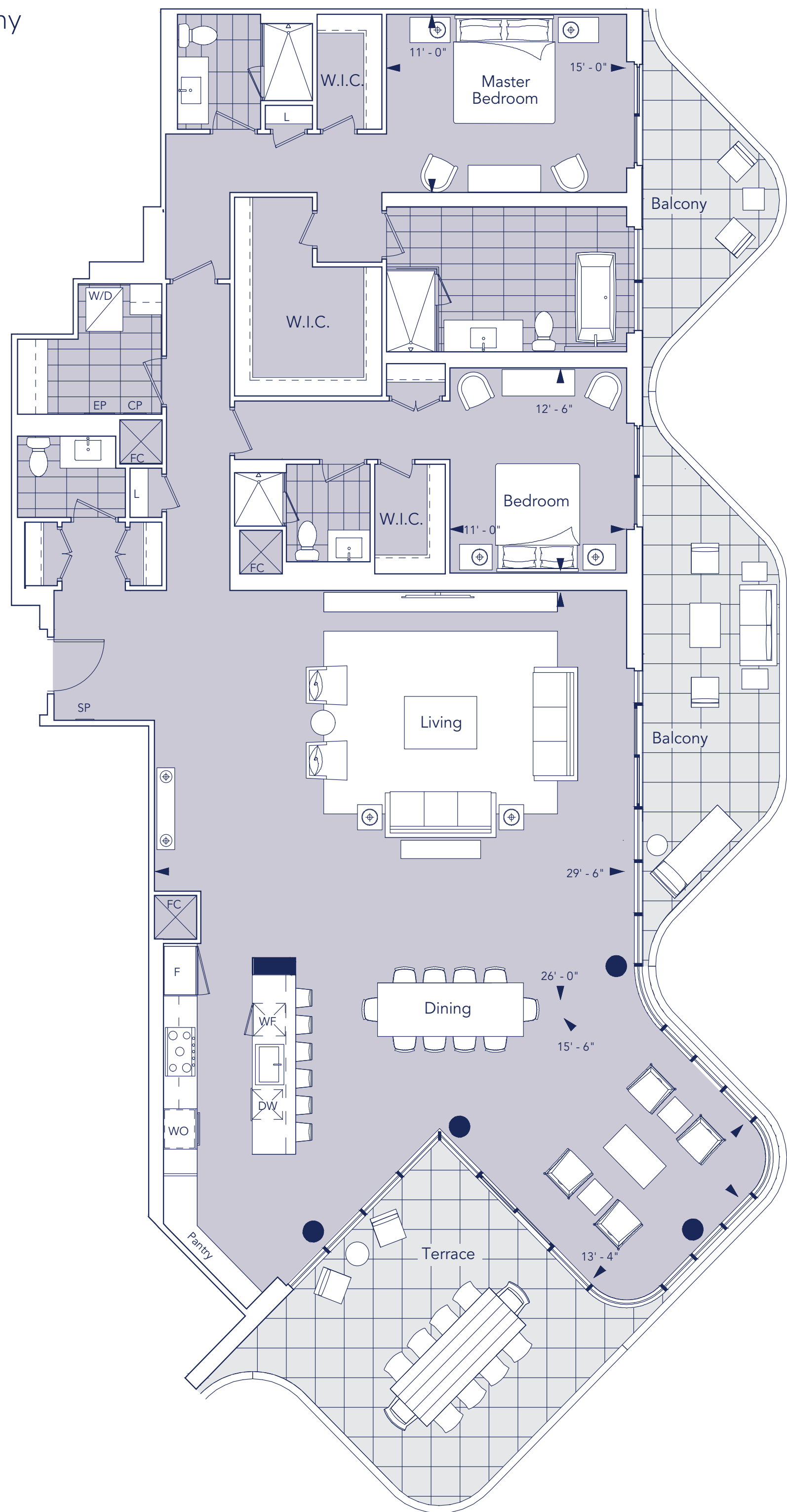
T2HH

AQUALUNA™

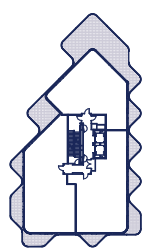
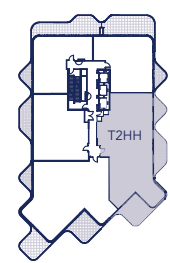
LUXURY BY THE LAKE

2 Bedroom, 3.5 Bathroom, 1 Terrace, 2 Balcony

Indoor Living Space 2,695 ft²
 Outdoor Living 556 ft²
 Total Living Space 3,251 ft²



FLOOR 12



ELEVATED LIVING

Your Aqualuna home includes only the most extraordinary features and finishes. From a chef-inspired kitchen fully-equipped with a suite of premium Miele appliances, to quiet and comfortable acoustic engineered hardwood flooring, every refined detail creates a living experience that's simply a cut above.

Spacious terraces outfitted with a light fixture, gas line, and hose bib mean summertime barbecues and private garden retreats are just some of the possibilities waiting to be brought to life by your imagination. Innovative and intuitive smart home technology adds convenience and peace of mind to your every waking moment.

T2HH

Tridel®, Tridel Built for Life® and Tridel Built Green. Built for Life® are registered trademarks of Tridel and used under license. ©Tridel 2018. All dimensions are approximate and subject to normal construction variances. Dimensions may exceed the useable floor area. Sizes and specifications subject to change without notice. Furniture is displayed for illustration purposes only and does not necessarily reflect the electrical plan for the suite. Suites are sold unfurnished. Balcony and Façade Variations may apply, contact a sales representative for further details. Furniture, BBQs and planter locations on terraces are for illustration purposes only and subject to change. E.&O.E. All rights reserved. May 2018.

Hines

TRIDEL
BUILT FOR LIFE

BAYSIDE | A HINES MASTER
TORONTO | PLANNED COMMUNITY.
Redefining life on the water's edge.

T2N

tridel.com

AQUALUNA[™]
LUXURY BY THE LAKE

LUXURY BY THE LAKE
ΑQUALUNA



T2N

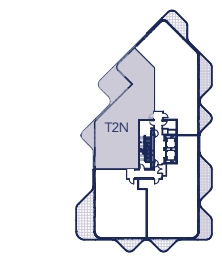
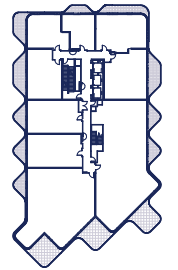
AQUALUNA™

LUXURY BY THE LAKE

2 Bedroom, 2.5 Bathroom, 1 Terrace, 1 Balcony

Indoor Living Space 2,223 ft²
 Outdoor Living 356 ft²
 Total Living Space 2,579 ft²

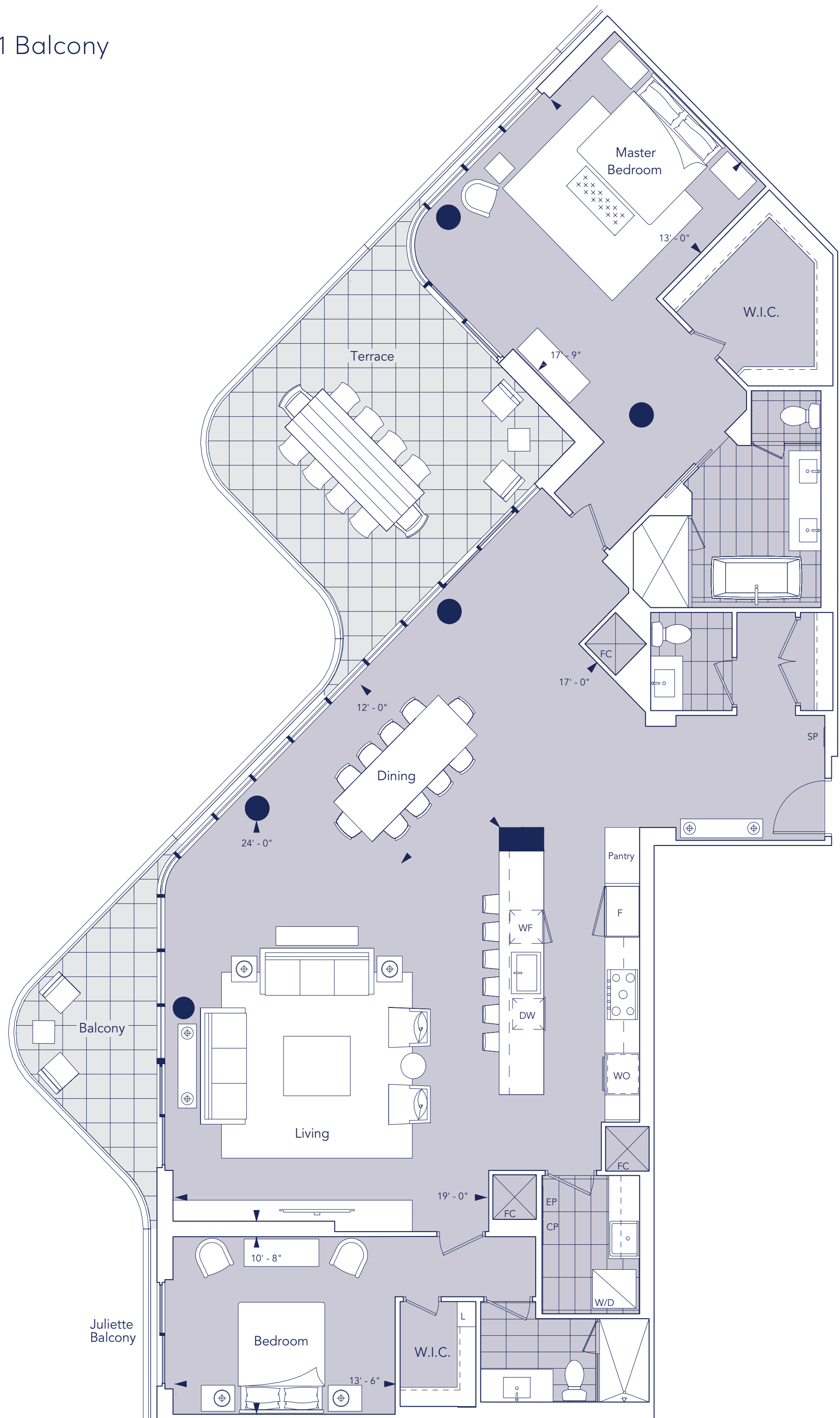
FLOOR 10



ELEVATED LIVING

Your Aqualuna home includes only the most extraordinary features and finishes. From a chef-inspired kitchen fully-equipped with a suite of premium Miele appliances, to quiet and comfortable acoustic engineered hardwood flooring, every refined detail creates a living experience that's simply a cut above.

Spacious terraces outfitted with a light fixture, gas line, and hose bib mean summertime barbecues and private garden retreats are just some of the possibilities waiting to be brought to life by your imagination. Innovative and intuitive smart home technology adds convenience and peace of mind to your every waking moment.



T2N

Tridel®, Tridel Built for Life® and Tridel Built Green. Built for Life® are registered trademarks of Tridel and used under license. ©Tridel 2018. All dimensions are approximate and subject to normal construction variances. Dimensions may exceed the useable floor area. Sizes and specifications subject to change without notice. Furniture is displayed for illustration purposes only and does not necessarily reflect the electrical plan for the suite. Suites are sold unfurnished. Balcony and Façade Variations may apply, contact a sales representative for further details. Furniture, BBQs and planter locations on terraces are for illustration purposes only and subject to change. E.&O.E. All rights reserved. May 2018.

Hines

TRIDEL
BUILT FOR LIFE

BAYSIDE | A HINES MASTER
TORONTO | PLANNED COMMUNITY.
Redefining life on the water's edge.

T2T+D

tridel.com

AQUALUNA[™]
LUXURY BY THE LAKE

LUXURY BY THE LAKE
ΑQUALUNA



T2T+D

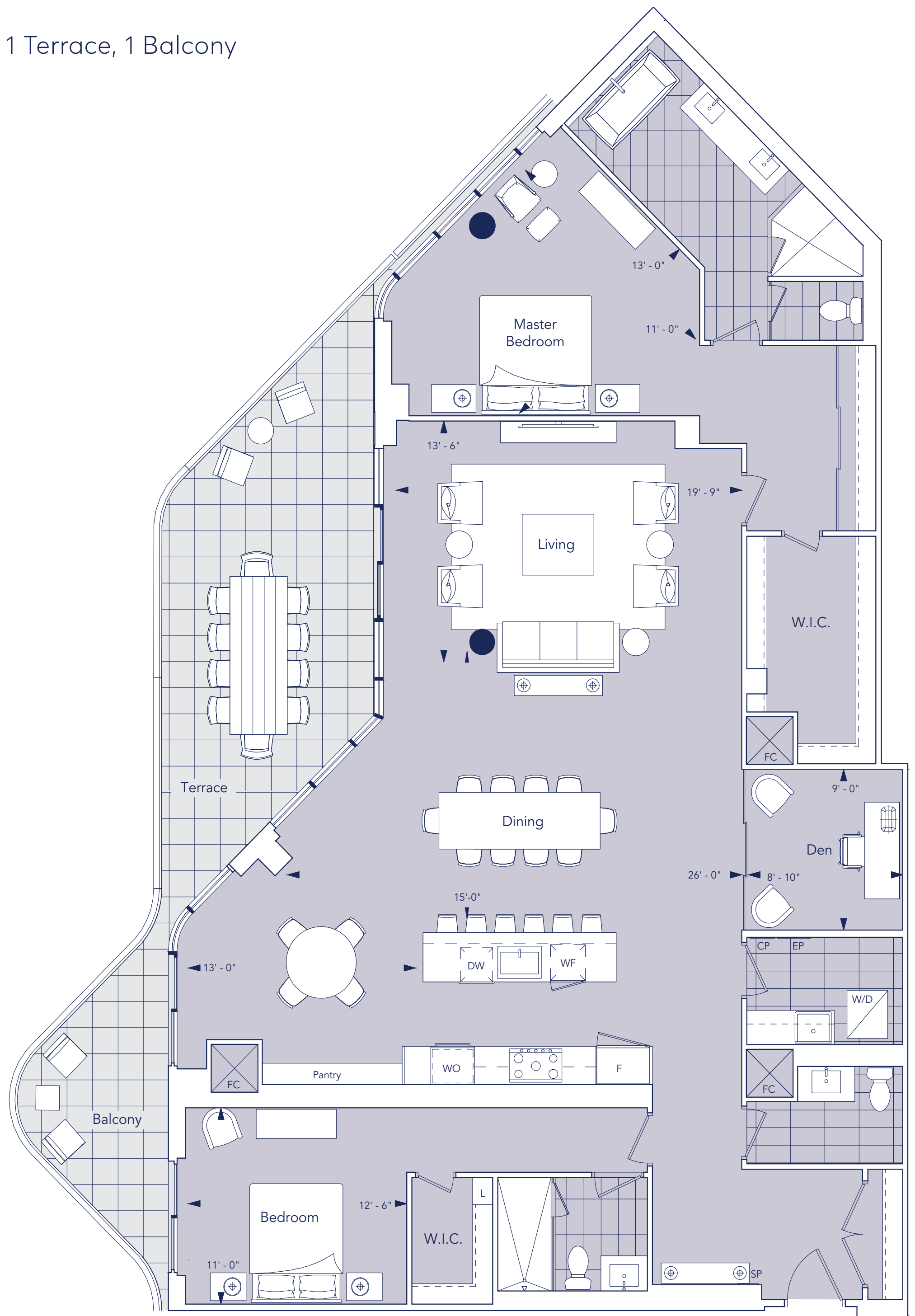
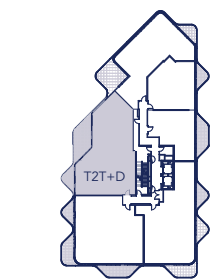
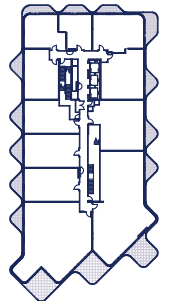
AQUALUNA™

LUXURY BY THE LAKE

2 Bedroom + Den, 2.5 Bathroom, 1 Terrace, 1 Balcony

Indoor Living Space 2,313 ft²
 Outdoor Living 380 ft²
 Total Living Space 2,693 ft²

FLOOR 7



ELEVATED LIVING

Your Aqualuna home includes only the most extraordinary features and finishes. From a chef-inspired kitchen fully-equipped with a suite of premium Miele appliances, to quiet and comfortable acoustic engineered hardwood flooring, every refined detail creates a living experience that's simply a cut above.

Spacious terraces outfitted with a light fixture, gas line, and hose bib mean summertime barbecues and private garden retreats are just some of the possibilities waiting to be brought to life by your imagination. Innovative and intuitive smart home technology adds convenience and peace of mind to your every waking moment.

T2T+D

Tridel®, Tridel Built for Life® and Tridel Built Green. Built for Life® are registered trademarks of Tridel and used under license. ©Tridel 2018. All dimensions are approximate and subject to normal construction variances. Dimensions may exceed the useable floor area. Sizes and specifications subject to change without notice. Furniture is displayed for illustration purposes only and does not necessarily reflect the electrical plan for the suite. Suites are sold unfurnished. Balcony and Façade Variations may apply, contact a sales representative for further details. Furniture, BBQs and planter locations on terraces are for illustration purposes only and subject to change. E.&O.E. All rights reserved. May 2018.

Hines

TRIDEL
BUILT FOR LIFE

BAYSIDE | A HINES MASTER
TORONTO | PLANNED COMMUNITY.
Redefining life on the water's edge.

T2W+D

tridel.com

AQUALUNA
LUXURY BY THE LAKE

LUXURY BY THE LAKE
ΛQUALUNA



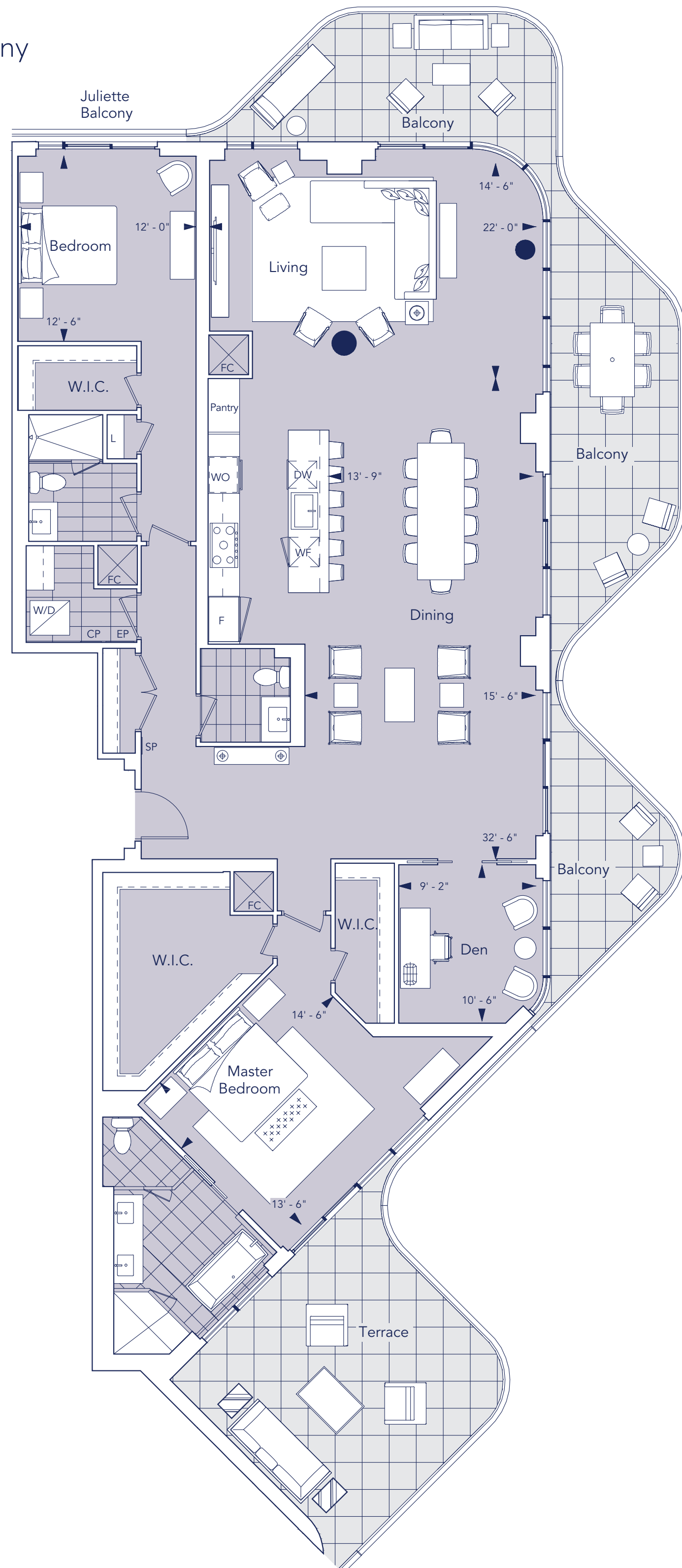
T2W+D

AQUALUNA™

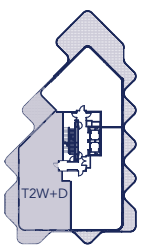
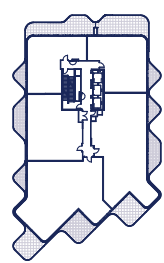
LUXURY BY THE LAKE

2 Bedroom + Den, 2.5 Bathroom, 1 Terrace, 3 Balcony

Indoor Living Space 2,430 ft²
 Outdoor Living 726 ft²
 Total Living Space 3,156 ft²



FLOOR 12



ELEVATED LIVING

Your Aqualuna home includes only the most extraordinary features and finishes. From a chef-inspired kitchen fully-equipped with a suite of premium Miele appliances, to quiet and comfortable acoustic engineered hardwood flooring, every refined detail creates a living experience that's simply a cut above.

Spacious terraces outfitted with a light fixture, gas line, and hose bib mean summertime barbecues and private garden retreats are just some of the possibilities waiting to be brought to life by your imagination. Innovative and intuitive smart home technology adds convenience and peace of mind to your every waking moment.

T2W+D

Tridel®, Tridel Built for Life® and Tridel Built Green. Built for Life® are registered trademarks of Tridel and used under license. ©Tridel 2018. All dimensions are approximate and subject to normal construction variances. Dimensions may exceed the useable floor area. Sizes and specifications subject to change without notice. Furniture is displayed for illustration purposes only and does not necessarily reflect the electrical plan for the suite. Suites are sold unfurnished. Balcony and Façade Variations may apply, contact a sales representative for further details. Furniture, BBQs and planter locations on terraces are for illustration purposes only and subject to change. E.&O.E. All rights reserved. May 2018.

Hines

TRIDEL
BUILT FOR LIFE

BAYSIDE | A HINES MASTER
TORONTO | PLANNED COMMUNITY.
Redefining life on the water's edge.

T2X

tridel.com

AQUALUNA
LUXURY BY THE LAKE

LUXURY BY THE LAKE
ΑQUALUNA



T2X

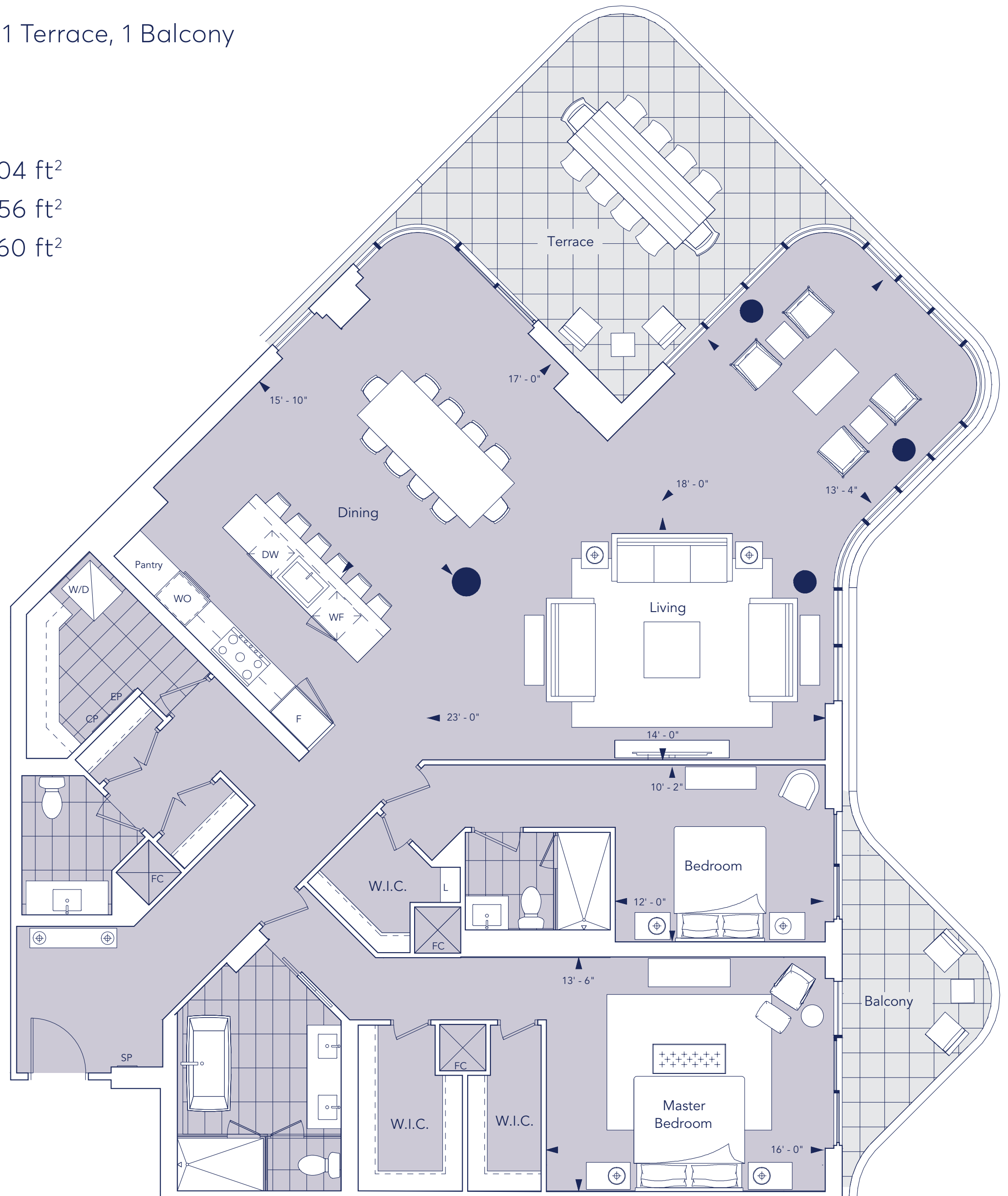
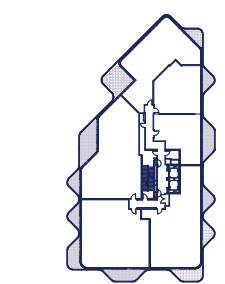
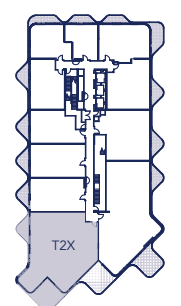
AQUALUNA™

LUXURY BY THE LAKE

2 Bedroom, 2.5 Bathroom, 1 Terrace, 1 Balcony

Indoor Living Space 2,404 ft²
 Outdoor Living 356 ft²
 Total Living Space 2,760 ft²

FLOOR 7



ELEVATED LIVING

Your Aqualuna home includes only the most extraordinary features and finishes. From a chef-inspired kitchen fully-equipped with a suite of premium Miele appliances, to quiet and comfortable acoustic engineered hardwood flooring, every refined detail creates a living experience that's simply a cut above.

Spacious terraces outfitted with a light fixture, gas line, and hose bib mean summertime barbecues and private garden retreats are just some of the possibilities waiting to be brought to life by your imagination. Innovative and intuitive smart home technology adds convenience and peace of mind to your every waking moment.

T2X

Tridel®, Tridel Built for Life® and Tridel Built Green. Built for Life® are registered trademarks of Tridel and used under license. ©Tridel 2018. All dimensions are approximate and subject to normal construction variances. Dimensions may exceed the useable floor area. Sizes and specifications subject to change without notice. Furniture is displayed for illustration purposes only and does not necessarily reflect the electrical plan for the suite. Suites are sold unfurnished. Balcony and Façade Variations may apply, contact a sales representative for further details. Furniture, BBQs and planter locations on terraces are for illustration purposes only and subject to change. E.&O.E. All rights reserved. May 2018.

Hines

TRIDEL
BUILT FOR LIFE

BAYSIDE | A HINES MASTER
TORONTO | PLANNED COMMUNITY.
Redefining life on the water's edge.

T3A

tridel.com

AQUALUNA[™]
LUXURY BY THE LAKE

LUXURY BY THE LAKE
ΥΝΝΤΥΝΘ



T3A

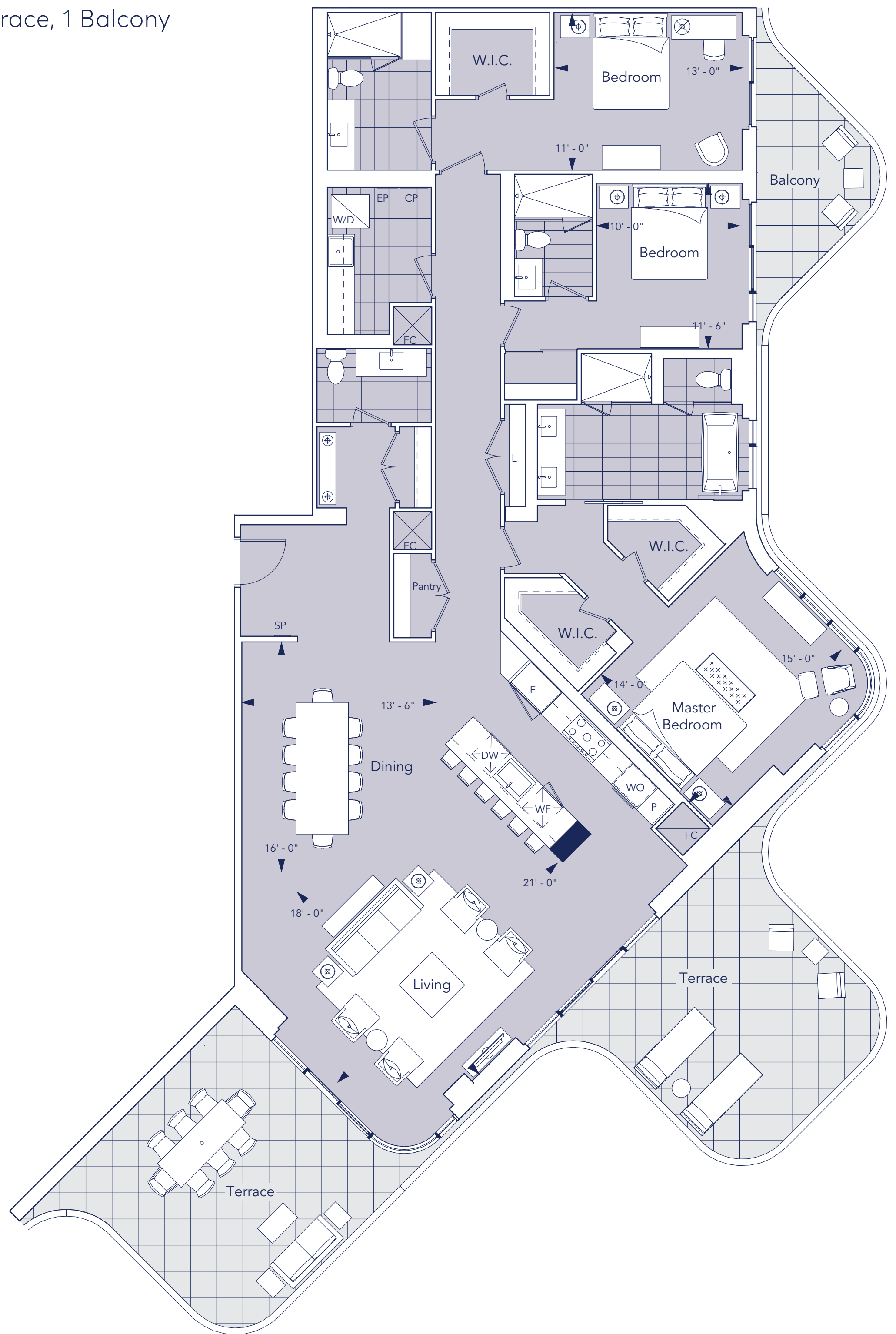
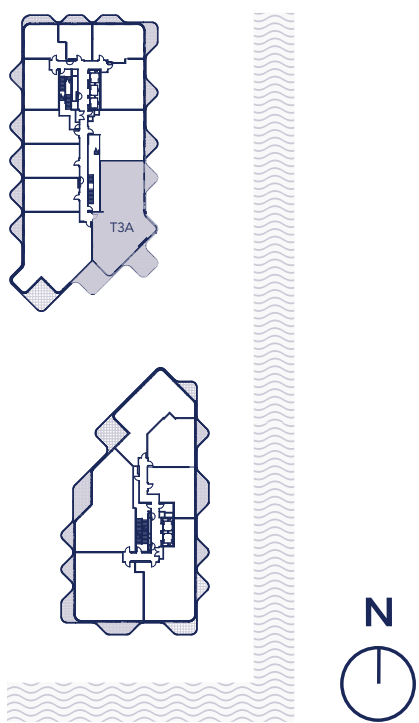
AQUALUNA™

LUXURY BY THE LAKE

3 Bedroom, 3.5 Bathroom, 2 Terrace, 1 Balcony

Indoor Living Space 2,515 ft²
 Outdoor Living 601 ft²
 Total Living Space 3,116 ft²

FLOOR 7



ELEVATED LIVING

Your Aqualuna home includes only the most extraordinary features and finishes. From a chef-inspired kitchen fully-equipped with a suite of premium Miele appliances, to quiet and comfortable acoustic engineered hardwood flooring, every refined detail creates a living experience that's simply a cut above.

Spacious terraces outfitted with a light fixture, gas line, and hose bib mean summertime barbecues and private garden retreats are just some of the possibilities waiting to be brought to life by your imagination. Innovative and intuitive smart home technology adds convenience and peace of mind to your every waking moment.

T3A

Tridel®, Tridel Built for Life® and Tridel Built Green. Built for Life® are registered trademarks of Tridel and used under license. ©Tridel 2018. All dimensions are approximate and subject to normal construction variances. Dimensions may exceed the useable floor area. Sizes and specifications subject to change without notice. Furniture is displayed for illustration purposes only and does not necessarily reflect the electrical plan for the suite. Suites are sold unfurnished. Balcony and Façade Variations may apply, contact a sales representative for further details. Furniture, BBQs and planter locations on terraces are for illustration purposes only and subject to change. E.&O.E. All rights reserved. May 2018.

Hines

TRIDEL
BUILT FOR LIFE

BAYSIDE | A HINES MASTER
TORONTO | PLANNED COMMUNITY.
Redefining life on the water's edge.

T3C

tridel.com

AQUALUNA[™]
LUXURY BY THE LAKE

LUXURY BY THE LAKE
ΑQUALUNA



T3C

AQUALUNA™

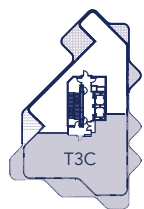
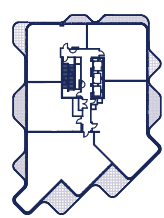
LUXURY BY THE LAKE

3 Bedroom, 3.5 Bathroom, 1 Terrace, 4 Balcony

Indoor Living Space 2,847 ft²
 Outdoor Living 830 ft²
 Total Living Space 3,677 ft²



FLOOR 14



ELEVATED LIVING

Your Aqualuna home includes only the most extraordinary features and finishes. From a chef-inspired kitchen fully-equipped with a suite of premium Miele appliances, to quiet and comfortable acoustic engineered hardwood flooring, every refined detail creates a living experience that's simply a cut above.

Spacious terraces outfitted with a light fixture, gas line, and hose bib mean summertime barbecues and private garden retreats are just some of the possibilities waiting to be brought to life by your imagination. Innovative and intuitive smart home technology adds convenience and peace of mind to your every waking moment.

T3C

Tridel®, Tridel Built for Life® and Tridel Built Green. Built for Life® are registered trademarks of Tridel and used under license. ©Tridel 2018. All dimensions are approximate and subject to normal construction variances. Dimensions may exceed the useable floor area. Sizes and specifications subject to change without notice. Furniture is displayed for illustration purposes only and does not necessarily reflect the electrical plan for the suite. Suites are sold unfurnished. Balcony and Façade Variations may apply, contact a sales representative for further details. Furniture, BBQs and planter locations on terraces are for illustration purposes only and subject to change. E.&O.E. All rights reserved. May 2018.

Hines

TRIDEL
BUILT FOR LIFE

BAYSIDE | A HINES MASTER
TORONTO | PLANNED COMMUNITY.
Redefining life on the water's edge.

TOWNHOME L3

tridel.com

AQUALUNA[™]
LUXURY BY THE LAKE

LUXURY BY THE LAKE
ΑΝΤΙΝΘΩΝ[™]



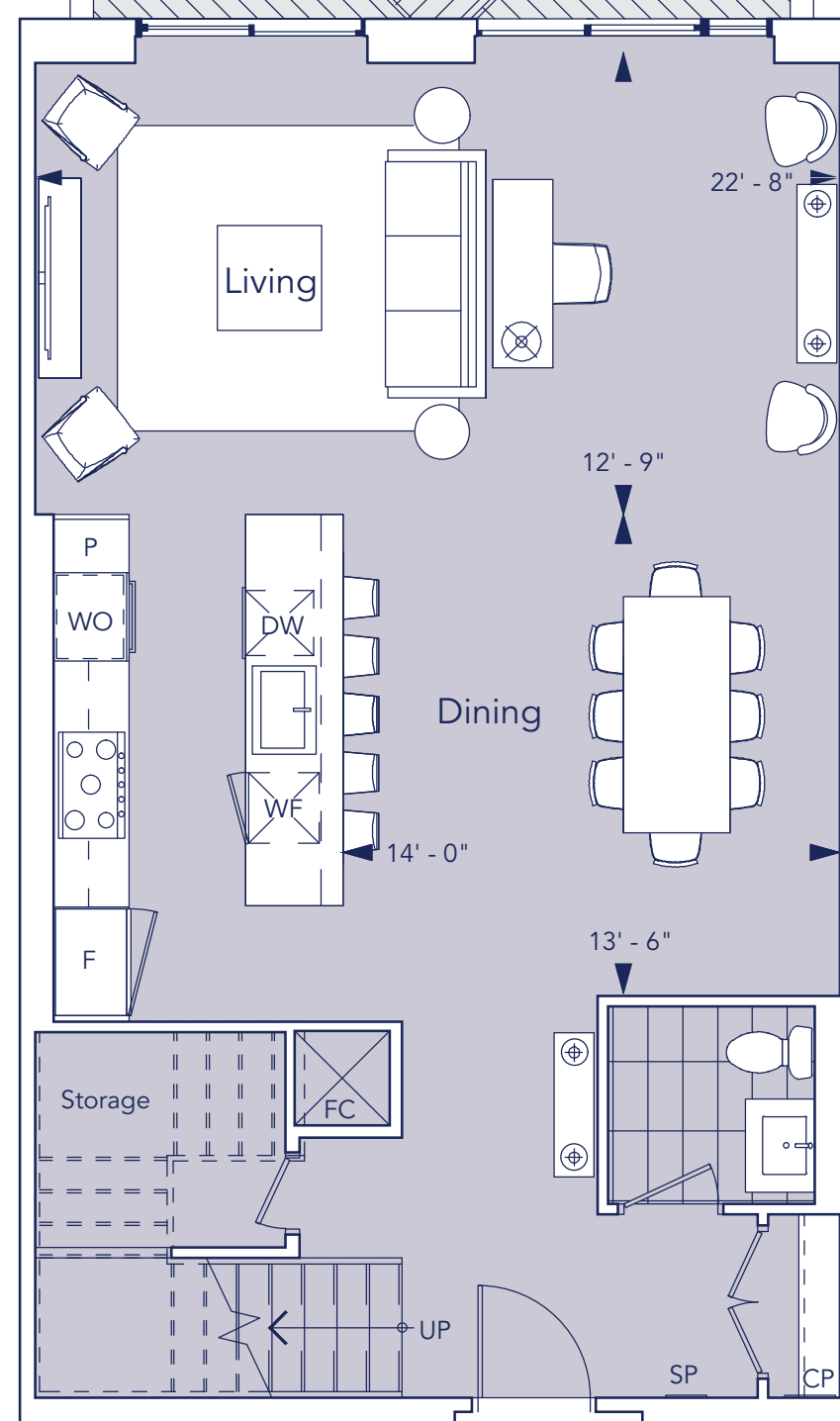
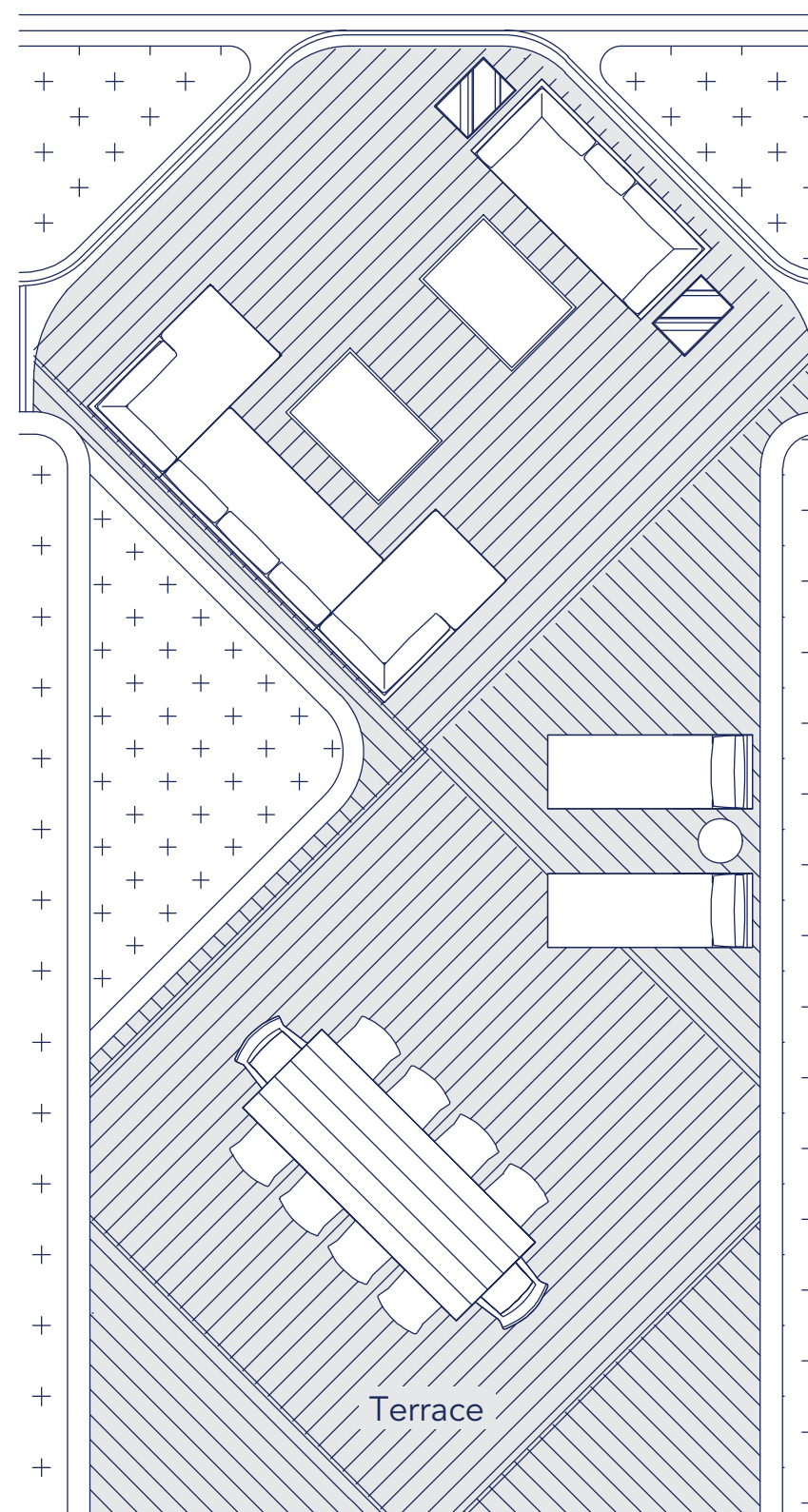
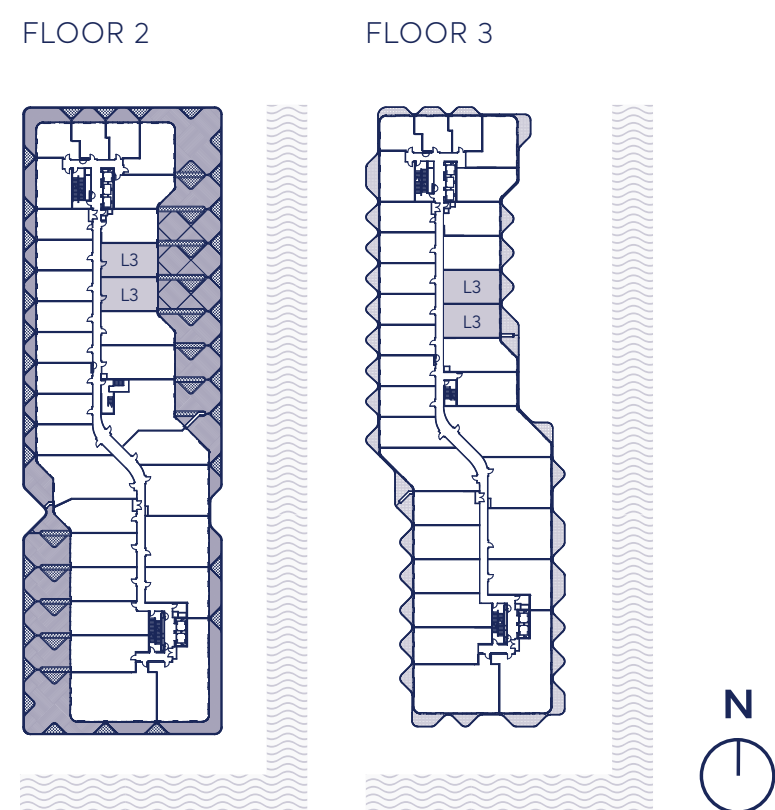
TOWNHOME L3

AQUALUNA™

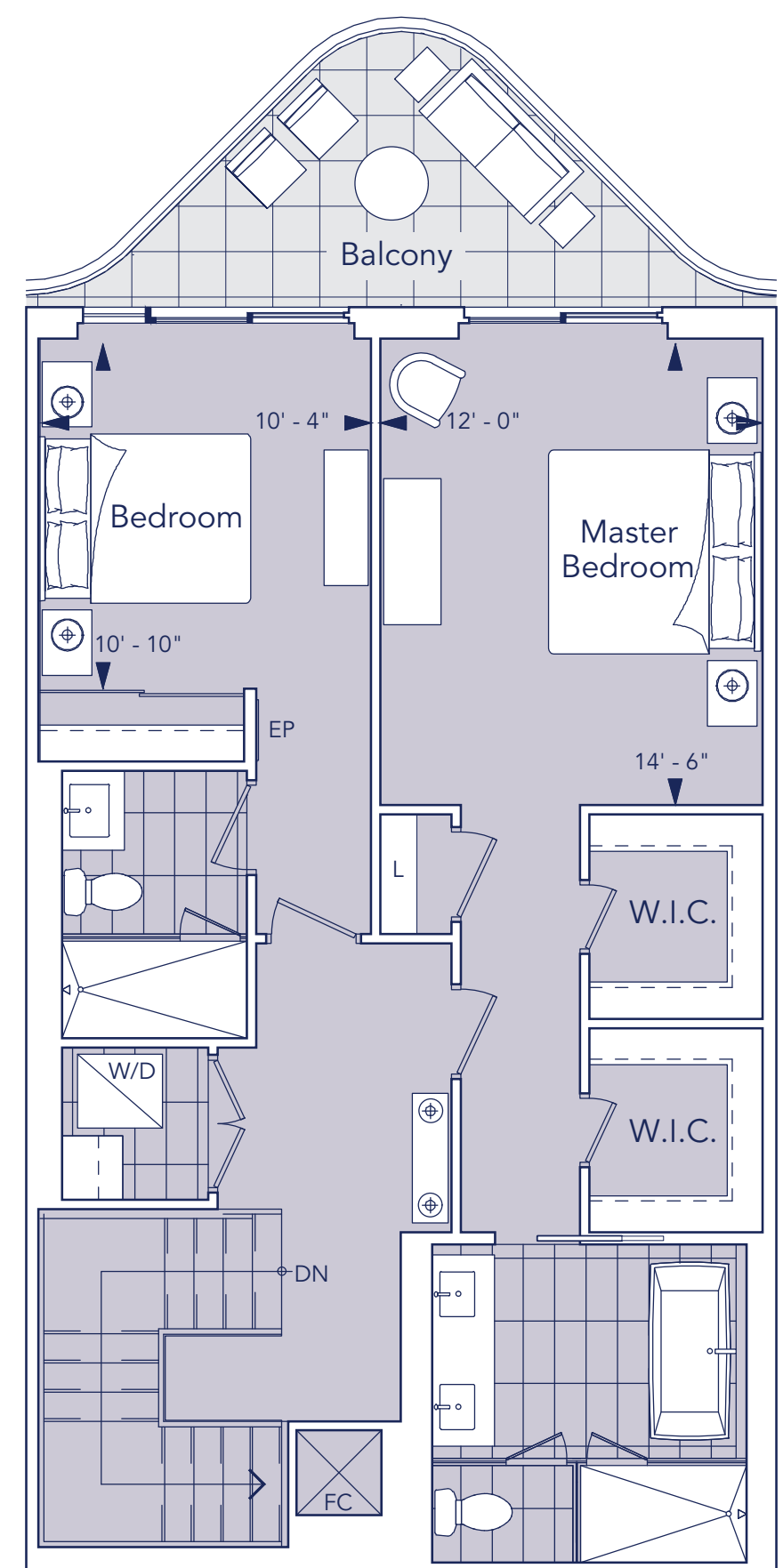
LUXURY BY THE LAKE

2 Bedroom, 2.5 Bathroom, 1 Terrace, 1 Balcony

Indoor Living Space 1,881 ft²
 Outdoor Living 1,000 ft²
 Total Living Space 2,881 ft²



Floor 2



Floor 3

ELEVATED LIVING

Your Aqualuna home includes only the most extraordinary features and finishes. From a chef-inspired kitchen fully-equipped with a suite of premium Miele appliances, to quiet and comfortable acoustic engineered hardwood flooring, every refined detail creates a living experience that's simply a cut above.

Spacious terraces outfitted with a light fixture, gas line, and hose bib mean summertime barbecues and private garden retreats are just some of the possibilities waiting to be brought to life by your imagination. Innovative and intuitive smart home technology adds convenience and peace of mind to your every waking moment.

THL3

Tridel®, Tridel Built for Life® and Tridel Built Green. Built for Life® are registered trademarks of Tridel and used under license. ©Tridel 2018. All dimensions are approximate and subject to normal construction variances. Dimensions may exceed the useable floor area. Sizes and specifications subject to change without notice. Furniture is displayed for illustration purposes only and does not necessarily reflect the electrical plan for the suite. Suites are sold unfurnished. Balcony and Façade Variations may apply, contact a sales representative for further details. Furniture, BBQs and planter locations on terraces are for illustration purposes only and subject to change. E.&O.E. All rights reserved. May 2018.

Hines

TRIDEL
BUILT FOR LIFE

BAYSIDE | A HINES MASTER
TORONTO | PLANNED COMMUNITY.
Redefining life on the water's edge.

TOWNHOME L7

tridel.com

AQUALUNA[™]
LUXURY BY THE LAKE

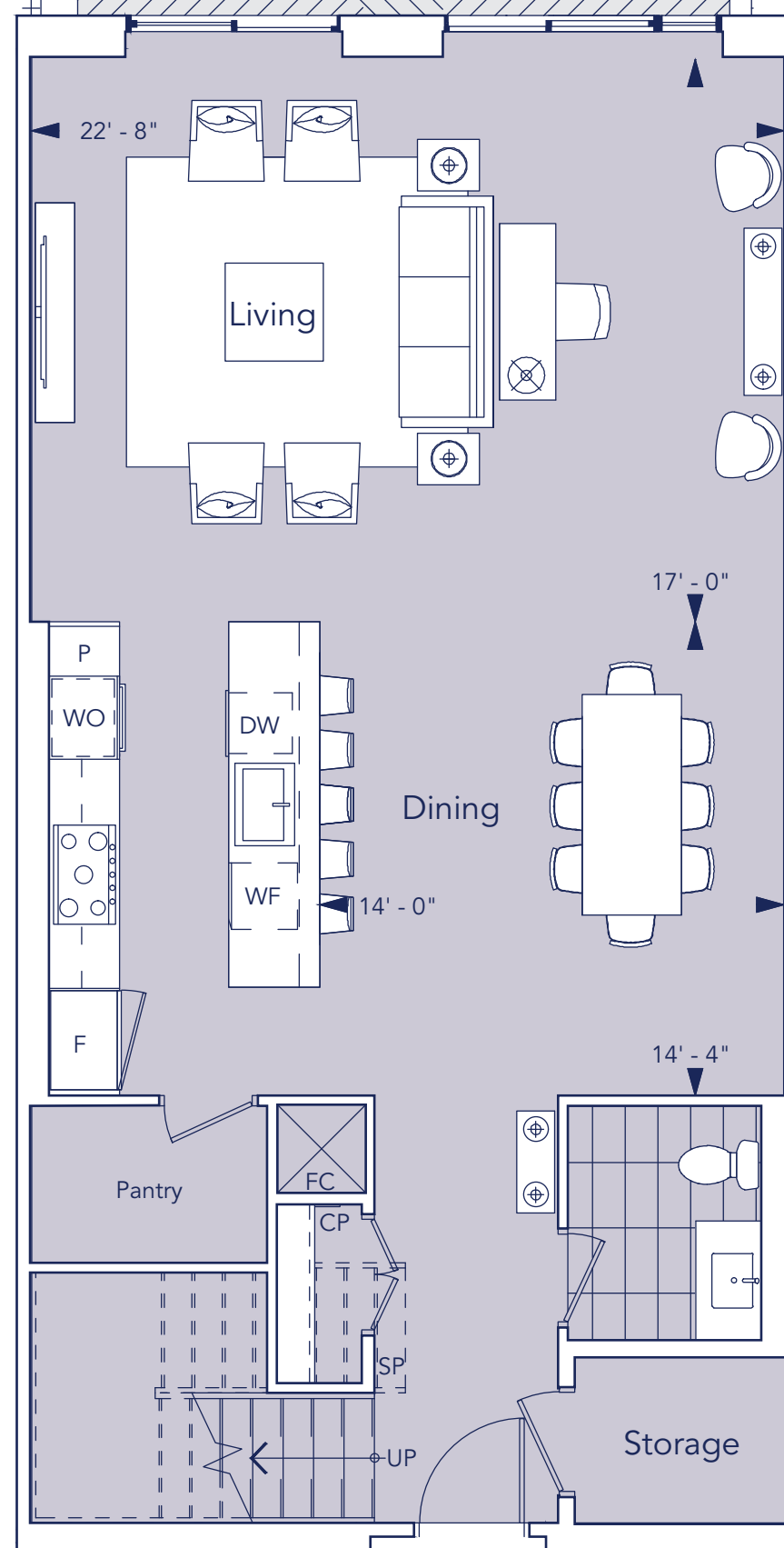
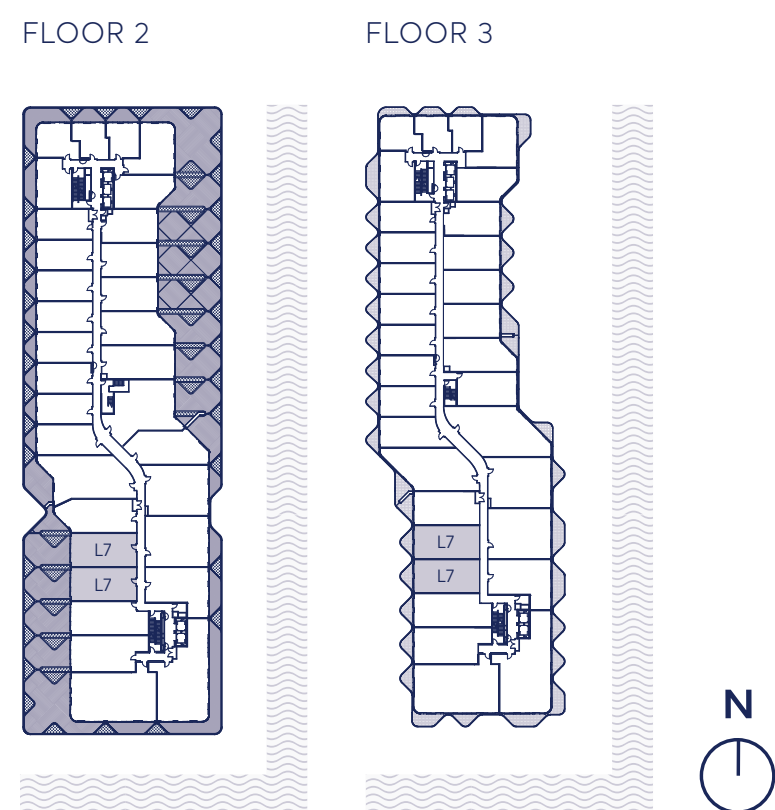
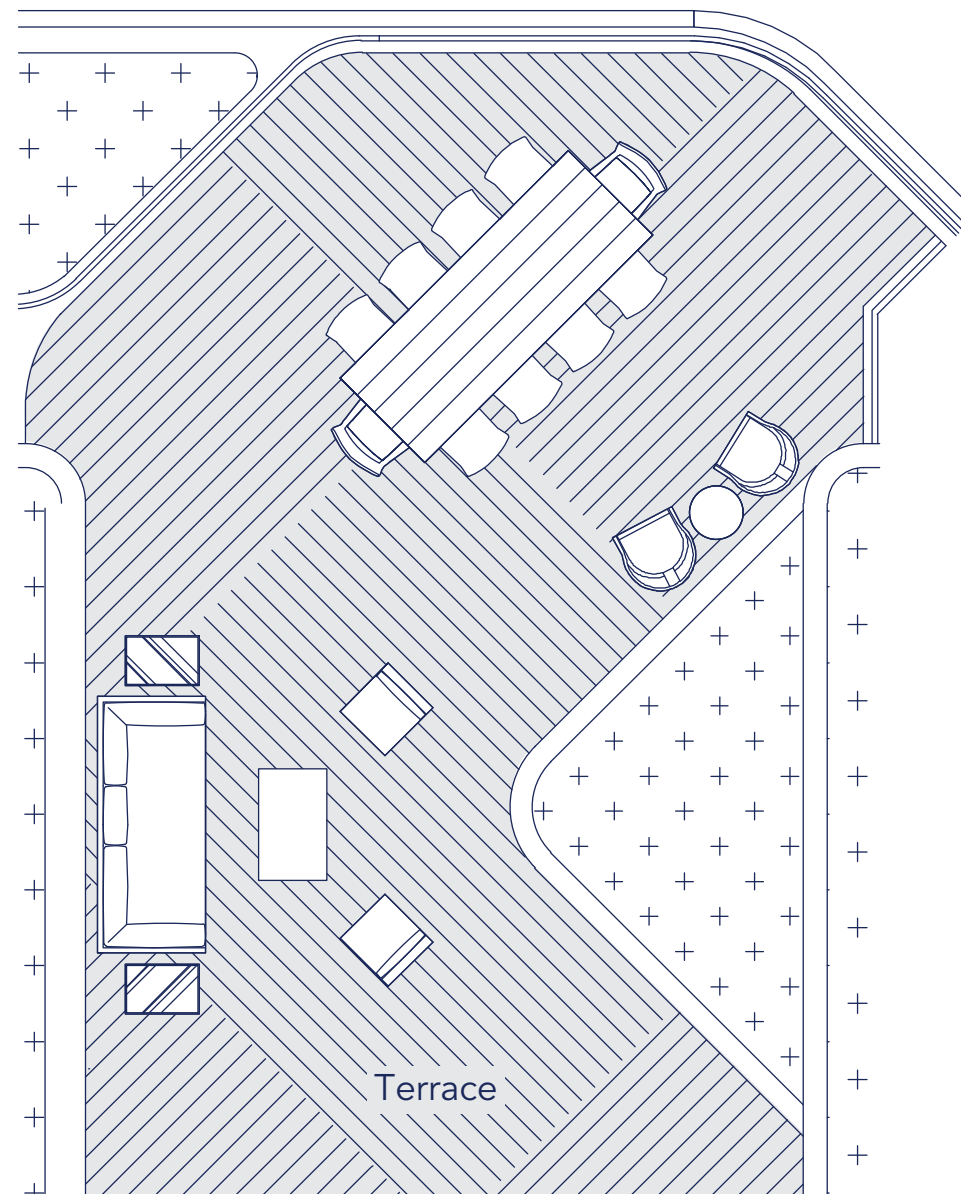
LUXURY BY THE LAKE
ΑΝΤΙΝΘΩΝ[™]



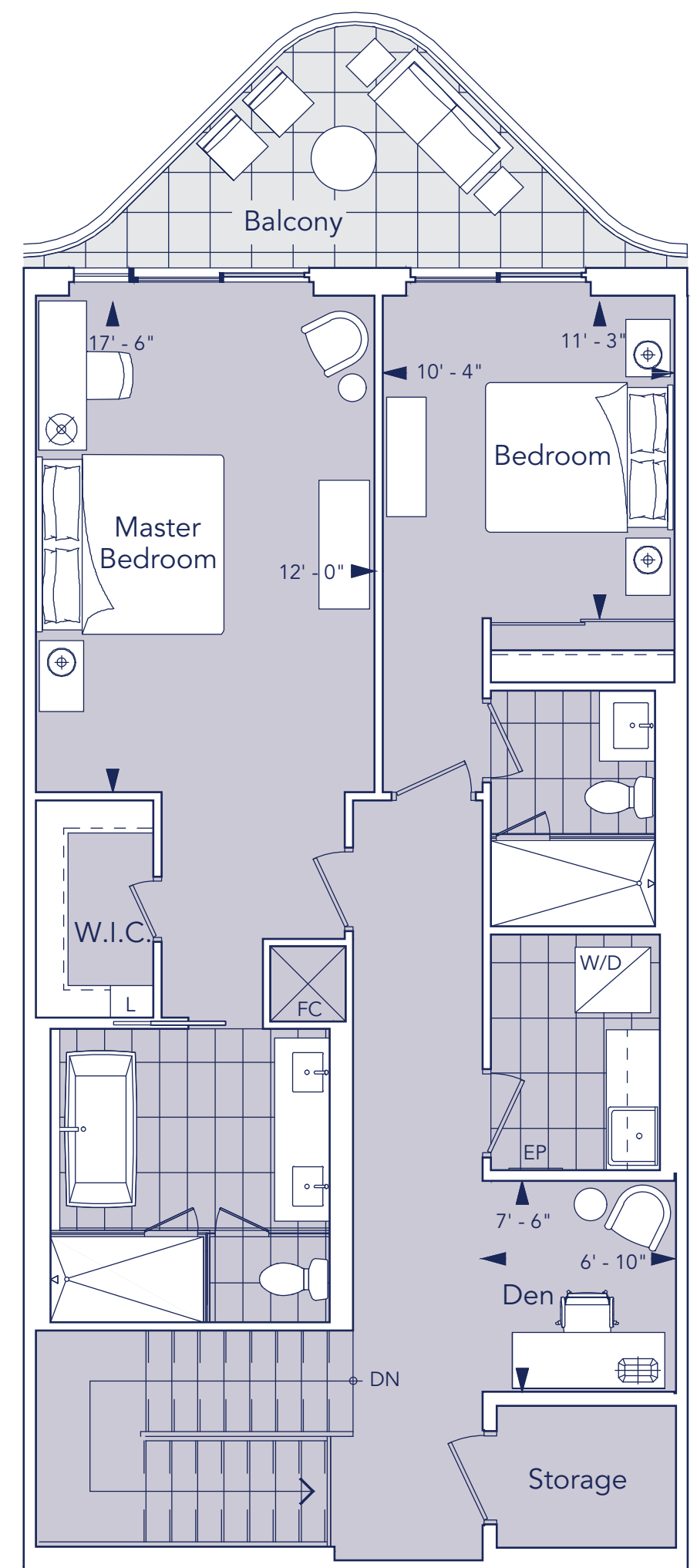
TOWNHOME L7

2 Bedroom + Den, 2.5 Bathroom, 1 Terrace, 1 Balcony

Indoor Living Space 2,195 ft²
Outdoor Living 630 ft²
Total Living Space 2,825 ft²



Floor 2



Floor 3

ELEVATED LIVING

Your Aqualuna home includes only the most extraordinary features and finishes. From a chef-inspired kitchen fully-equipped with a suite of premium Miele appliances, to quiet and comfortable acoustic engineered hardwood flooring, every refined detail creates a living experience that's simply a cut above.

Spacious terraces outfitted with a light fixture, gas line, and hose bib mean summertime barbecues and private garden retreats are just some of the possibilities waiting to be brought to life by your imagination. Innovative and intuitive smart home technology adds convenience and peace of mind to your every waking moment.