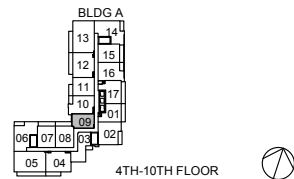
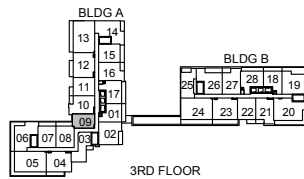
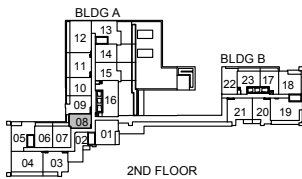
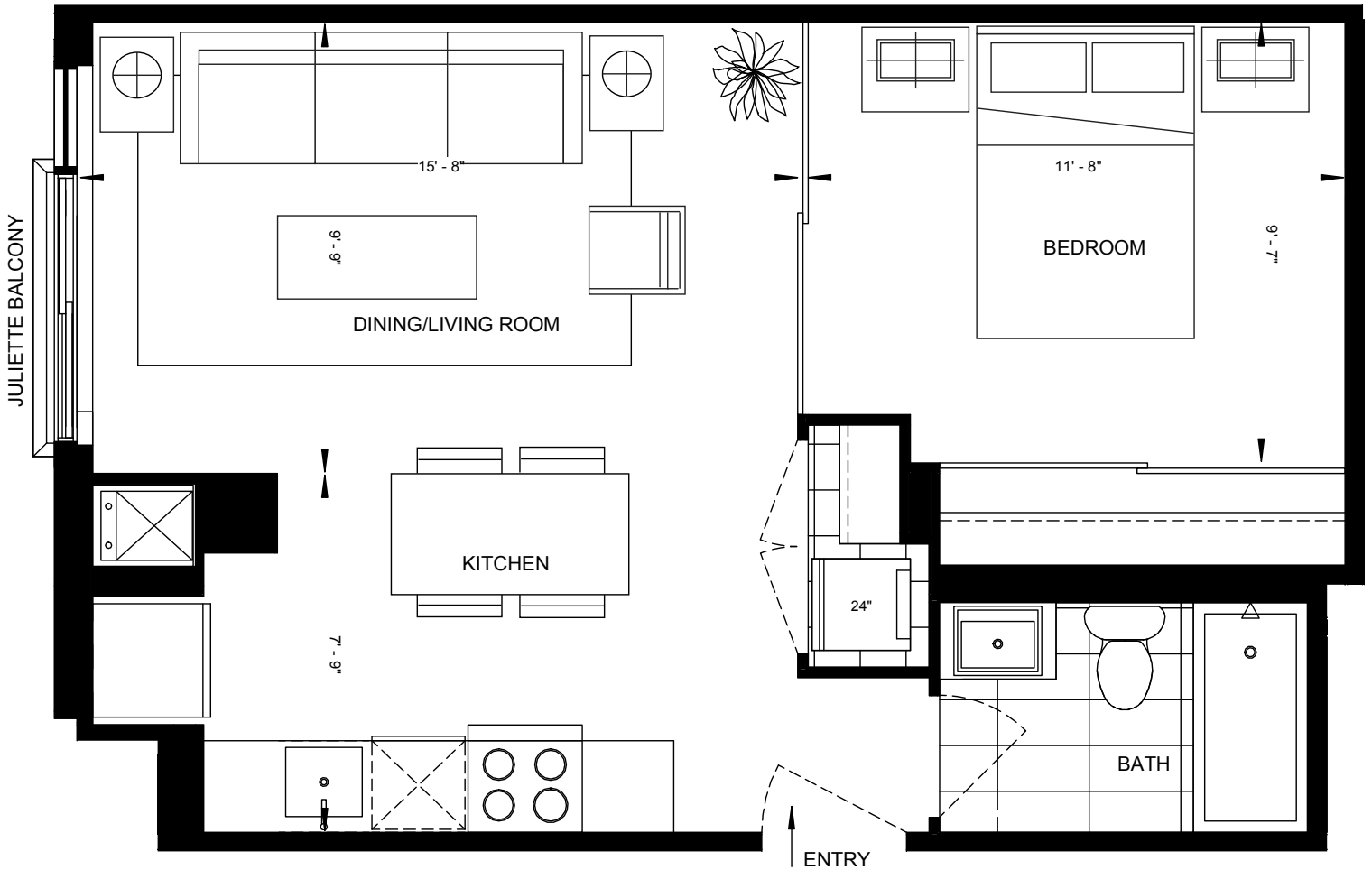
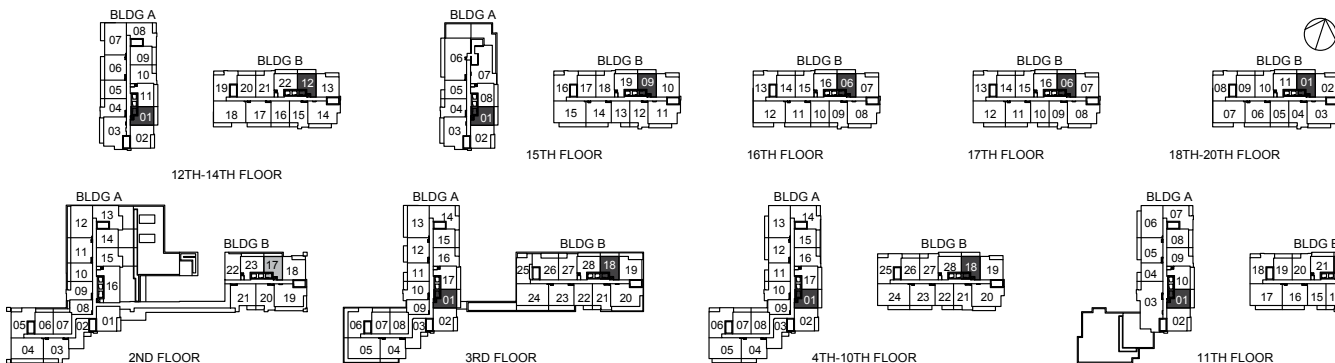
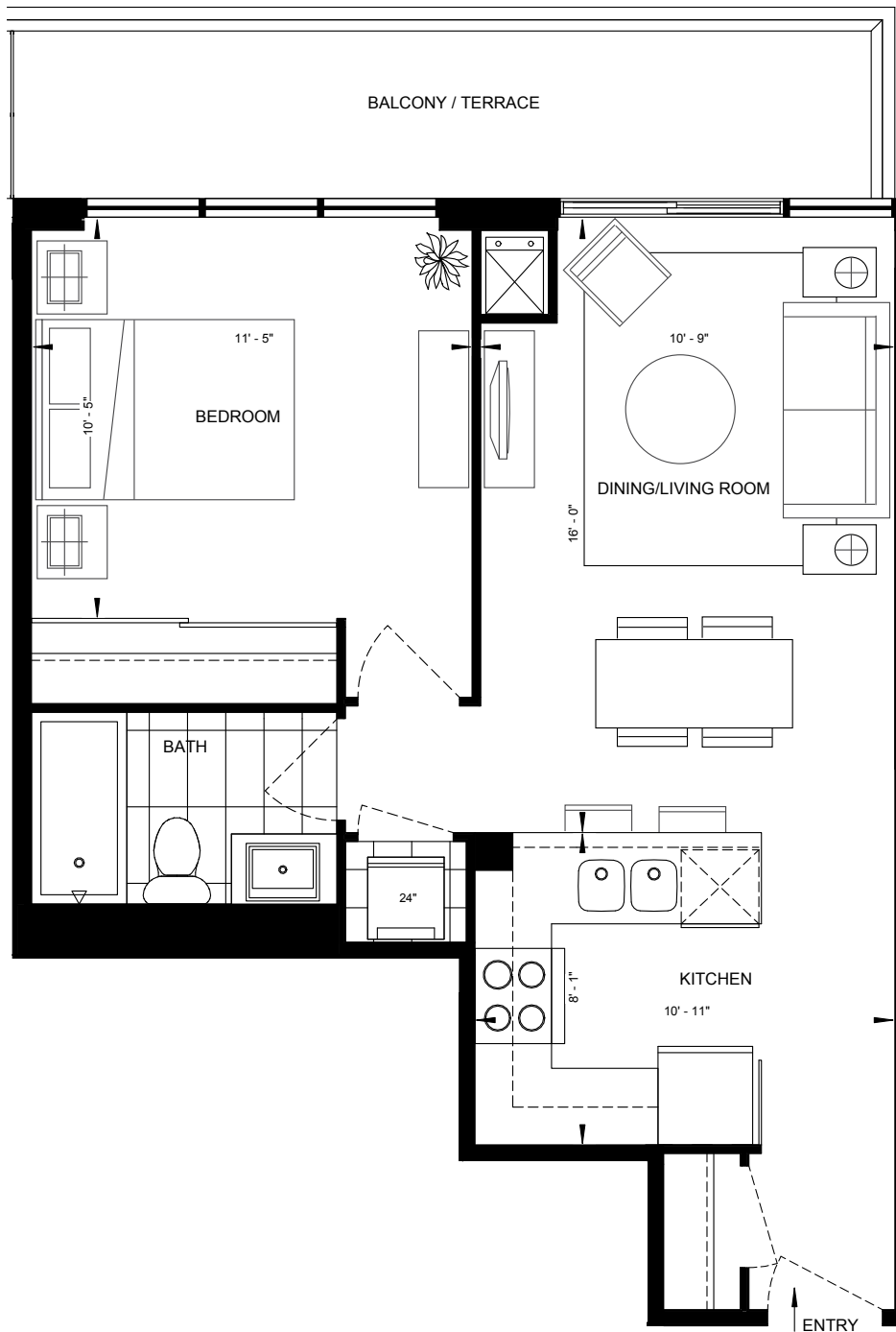


*D'or*

CONDOMINIUMS  
AT THORNHILL CITY CENTRE

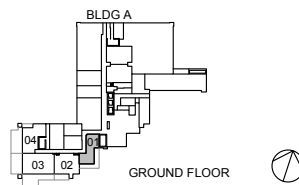
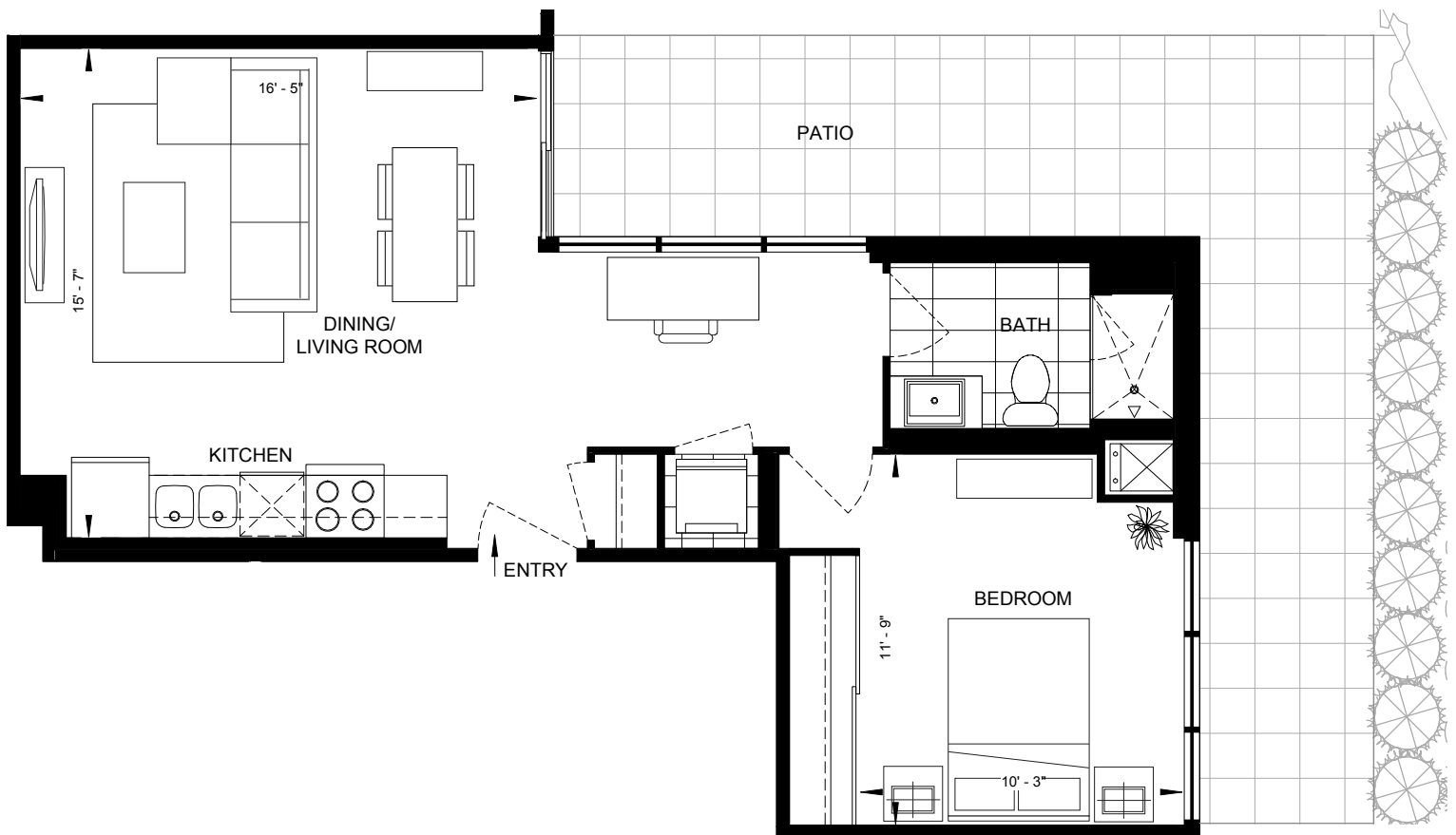
ONE BEDROOM | 1B-A | 529 SQ. FT.



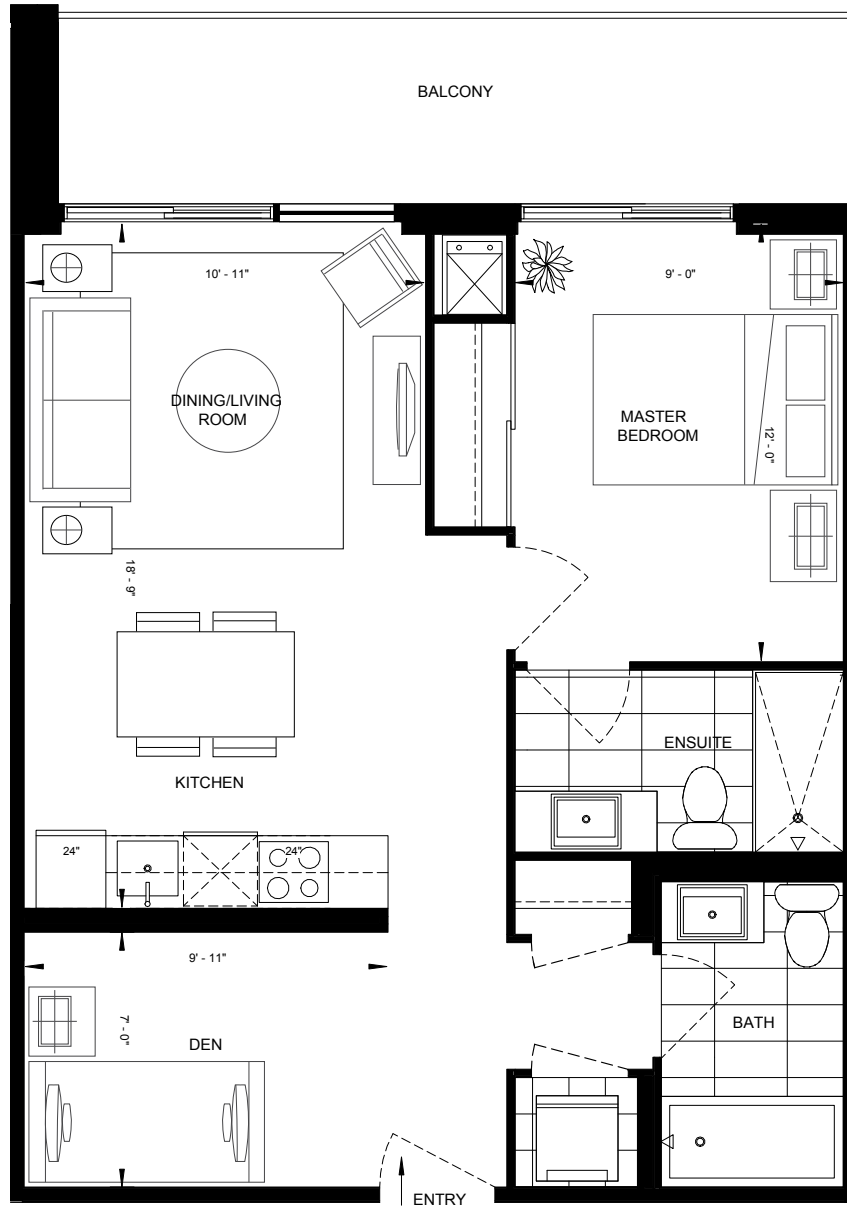


Whenever there are any discrepancies between the dimensions, areas and layout as set out in this Schedule D, and any marketing materials or brochures, the dimensions, areas and layout in the Schedule D shall govern. Dimensions, specifications, layouts, location of materials and fixtures, tile floor patterns and architectural detailing (including window size and location and door size, location and swing) are approximate only and are subject to change or modifications, without notice. Where there is a metal element indicated, metal element's dimension, size and location are approximate only and subject to change without notice. Actual usable floor space varies from stated floor area. Orientation of suite may be reversed and Purchaser agrees to accept same. Balconies, decks and terraces are exclusive use common elements shown for display purposes only and location and size are subject to change without notice. All illustrations are artist concepts only. The provisions of Schedule "X" of the Agreement, including Section 6 and 38, apply to the Schedule. E. & O.E.



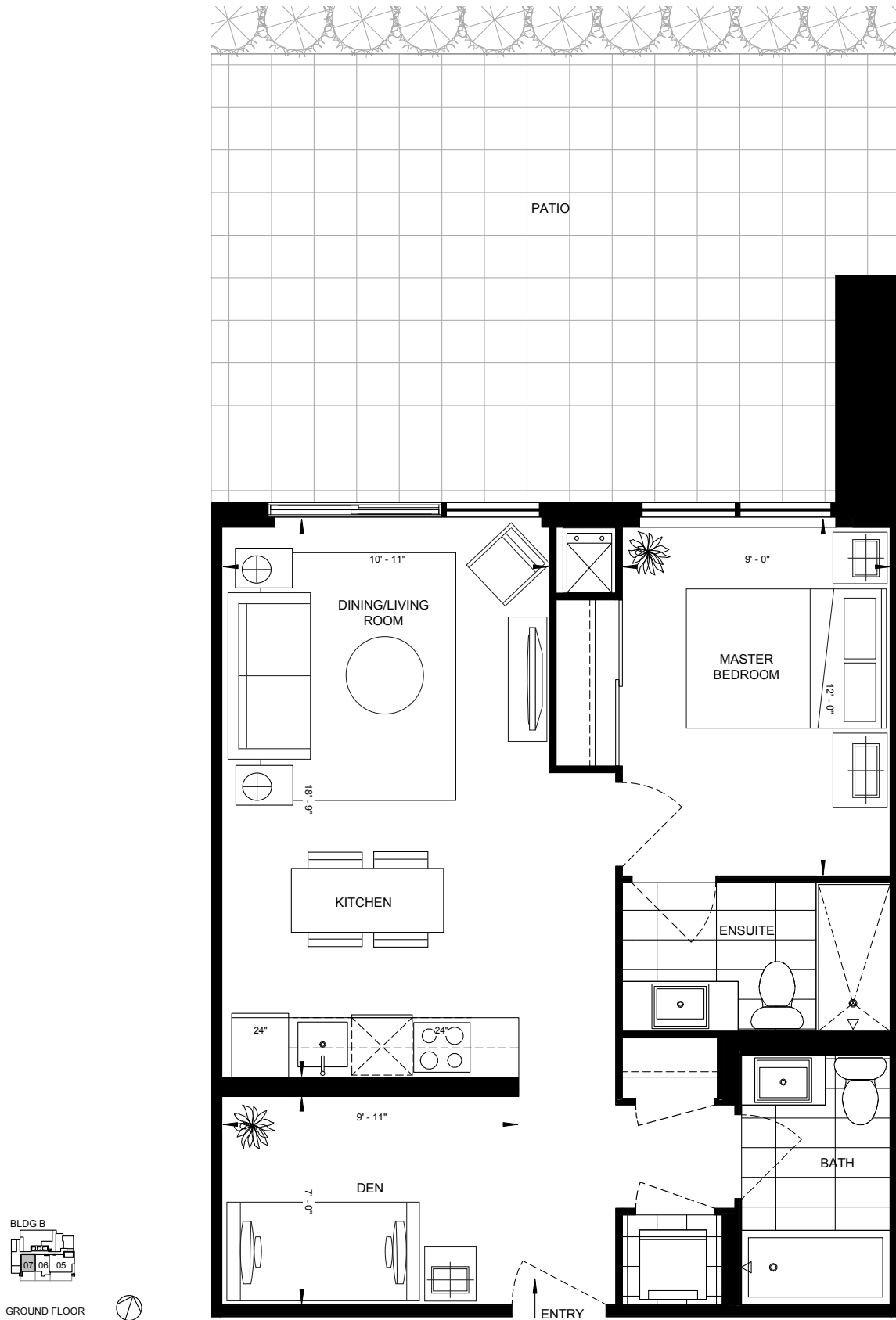


Whenever there are any discrepancies between the dimensions, areas and layout as set out in this Schedule D, and any marketing materials or brochures, the dimensions, areas and layout in the Schedule D shall govern. Dimensions, specifications, layouts, location of materials and fixtures, tile floor patterns and architectural detailing (including window size and location and door size, location and swing) are approximate only and are subject to change or modifications, without notice. Where there is a metal element indicated, metal element's dimension, size and location are approximate only and subject to change without notice. Actual usable floor space varies from stated floor area. Orientation of suite may be reversed and Purchaser agrees to accept same. Balconies, decks and terraces are exclusive use common elements shown for display purposes only and location and size are subject to change without notice. All illustrations are artist concepts only. The provisions of Schedule "X" of the Agreement, including Section 6 and 38, apply to the Schedule. E. & O.E.



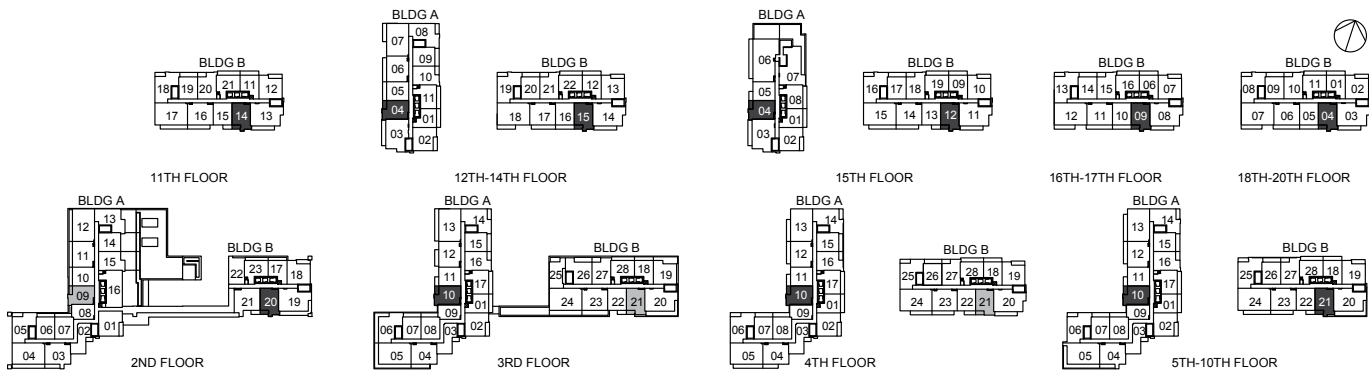
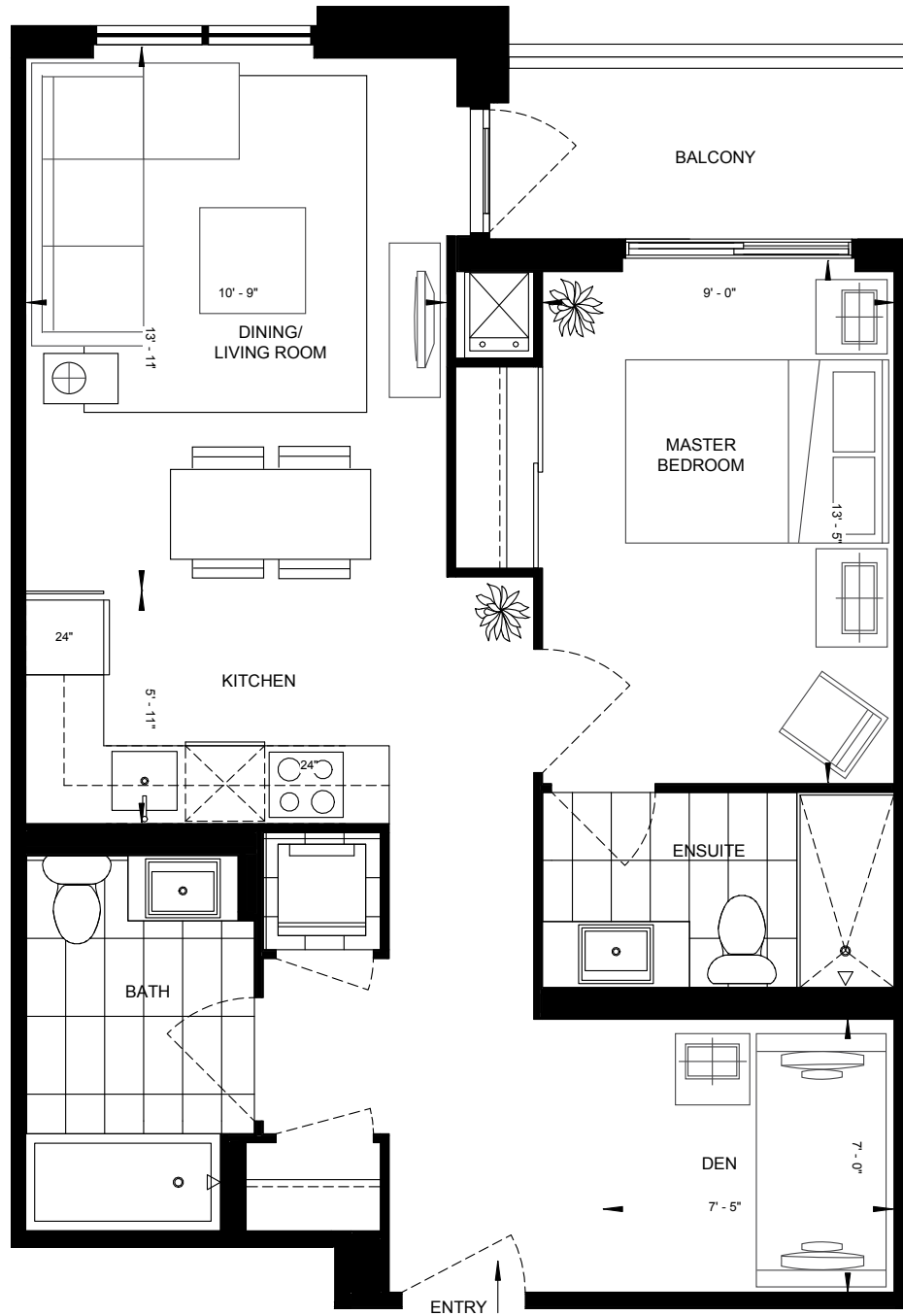
Whenever there are any discrepancies between the dimensions, areas and layout as set out in this Schedule D, and any marketing materials or brochures, the dimensions, areas and layout in the Schedule D shall govern. Dimensions, specifications, layouts, location of materials and fixtures, tile floor patterns and architectural detailing (including window size and location and door size, location and swing) are approximate only and are subject to change or modifications, without notice. Where there is a metal element indicated, metal element's dimension, size and location are approximate only and subject to change without notice. Actual usable floor space varies from stated floor area. Orientation of suite may be reversed and Purchaser agrees to accept same. Balconies, decks and terraces are exclusive use common elements shown for display purposes only and location and size are subject to change without notice. All illustrations are artist concepts only. The provisions of Schedule "X" of the Agreement, including Section 6 and 38, apply to the Schedule. E. & O.E.



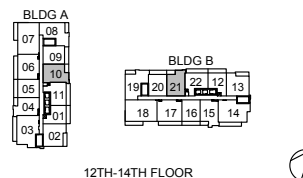
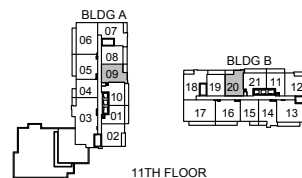
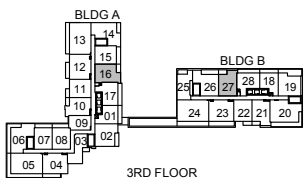
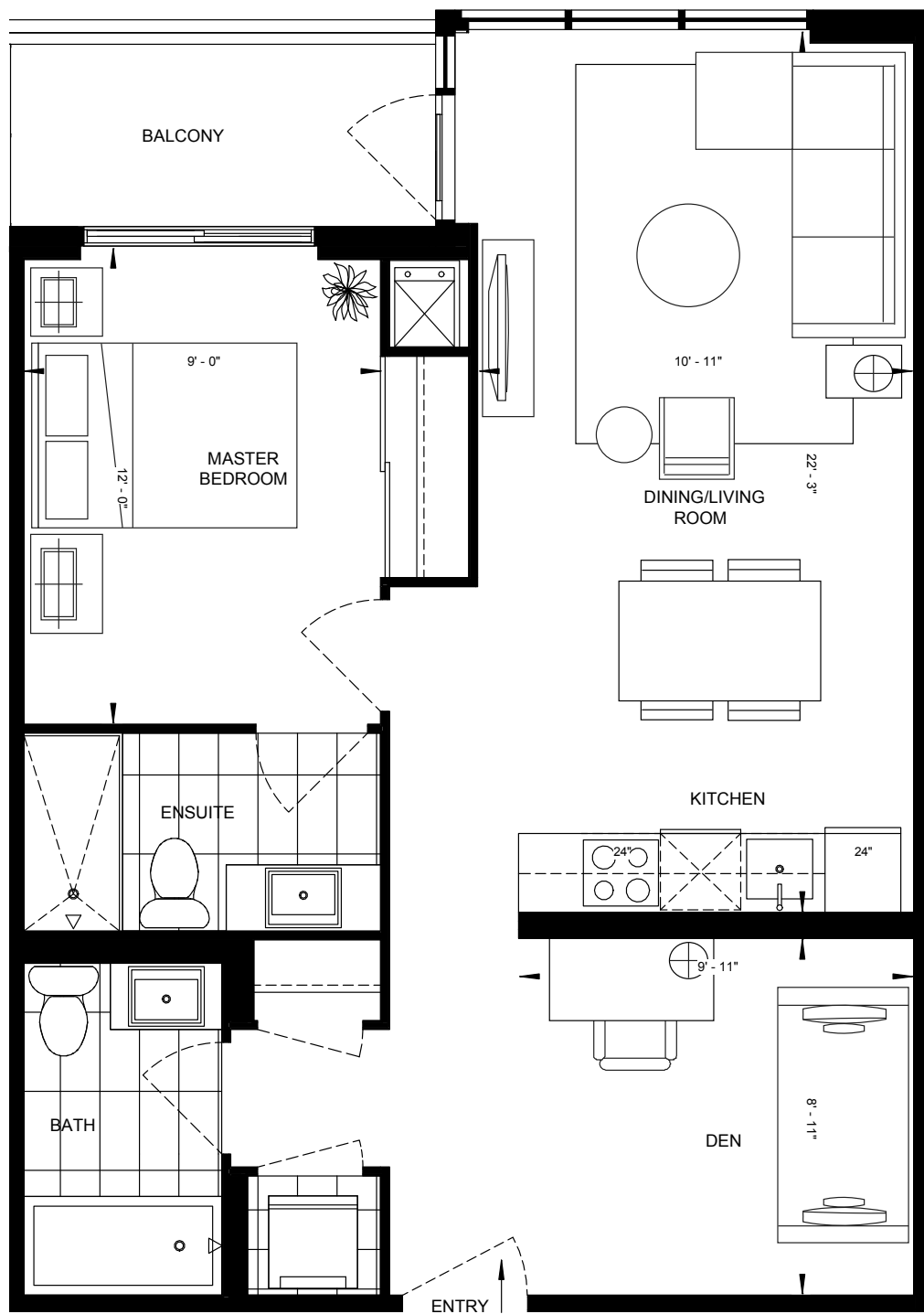


Whenever there are any discrepancies between the dimensions, areas and layout as set out in this Schedule D, and any marketing materials or brochures, the dimensions, areas and layout in the Schedule D shall govern. Dimensions, specifications, layouts, location of materials and fixtures, tile floor patterns and architectural detailing (including window size and location and door size, location and swing) are approximate only and are subject to change or modifications, without notice. Where there is a metal element indicated, metal element's dimension, size and location are approximate only and subject to change without notice. Actual usable floor space varies from stated floor area. Orientation of suite may be reversed and Purchaser agrees to accept same. Balconies, decks and terraces are exclusive use common elements shown for display purposes only and location and size are subject to change without notice. All illustrations are artist concepts only. The provisions of Schedule "X" of the Agreement, including Section 6 and 38, apply to the Schedule. E. & O.E.

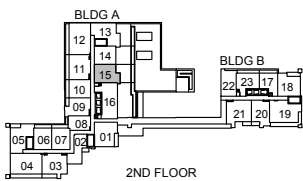
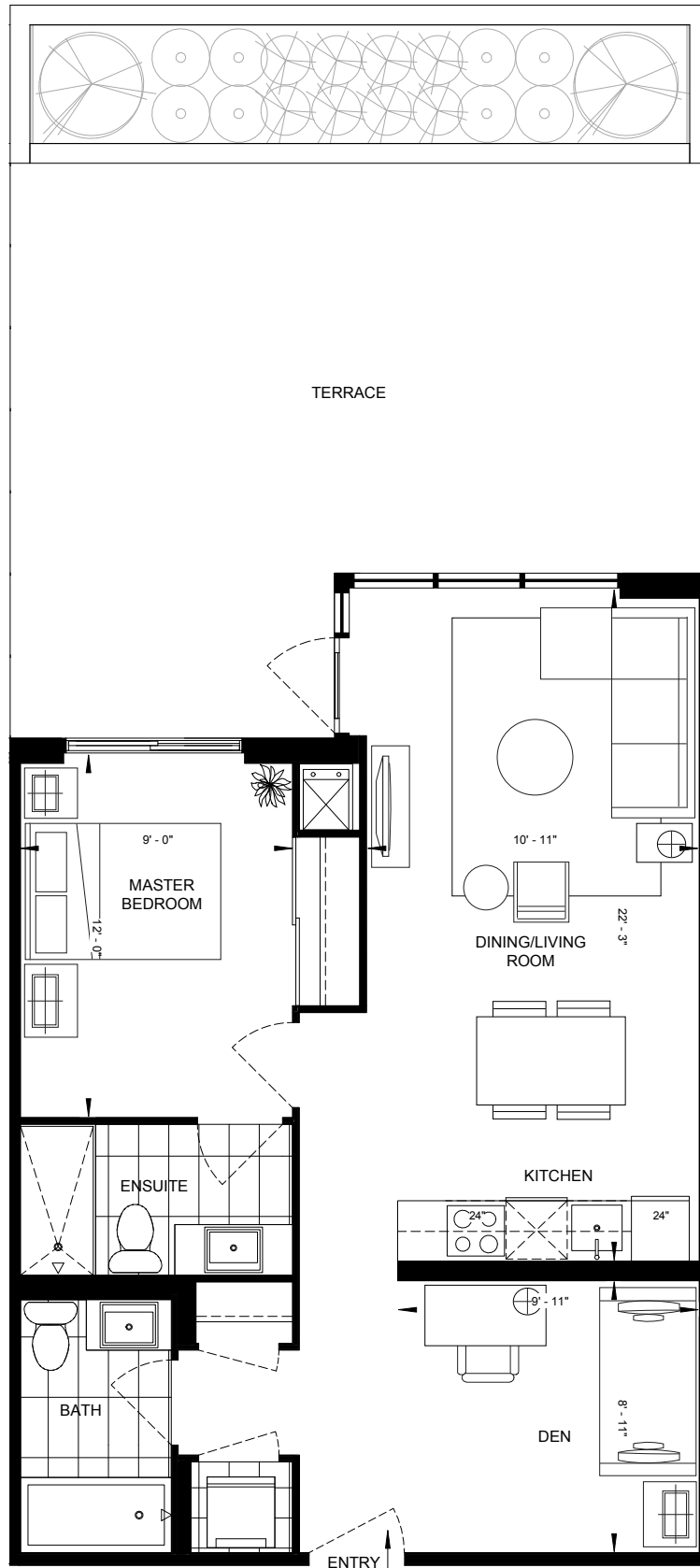




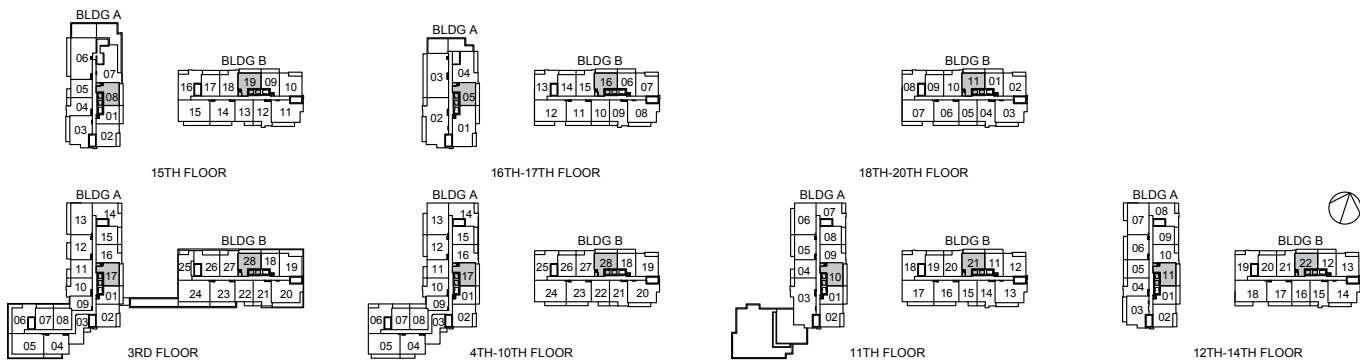
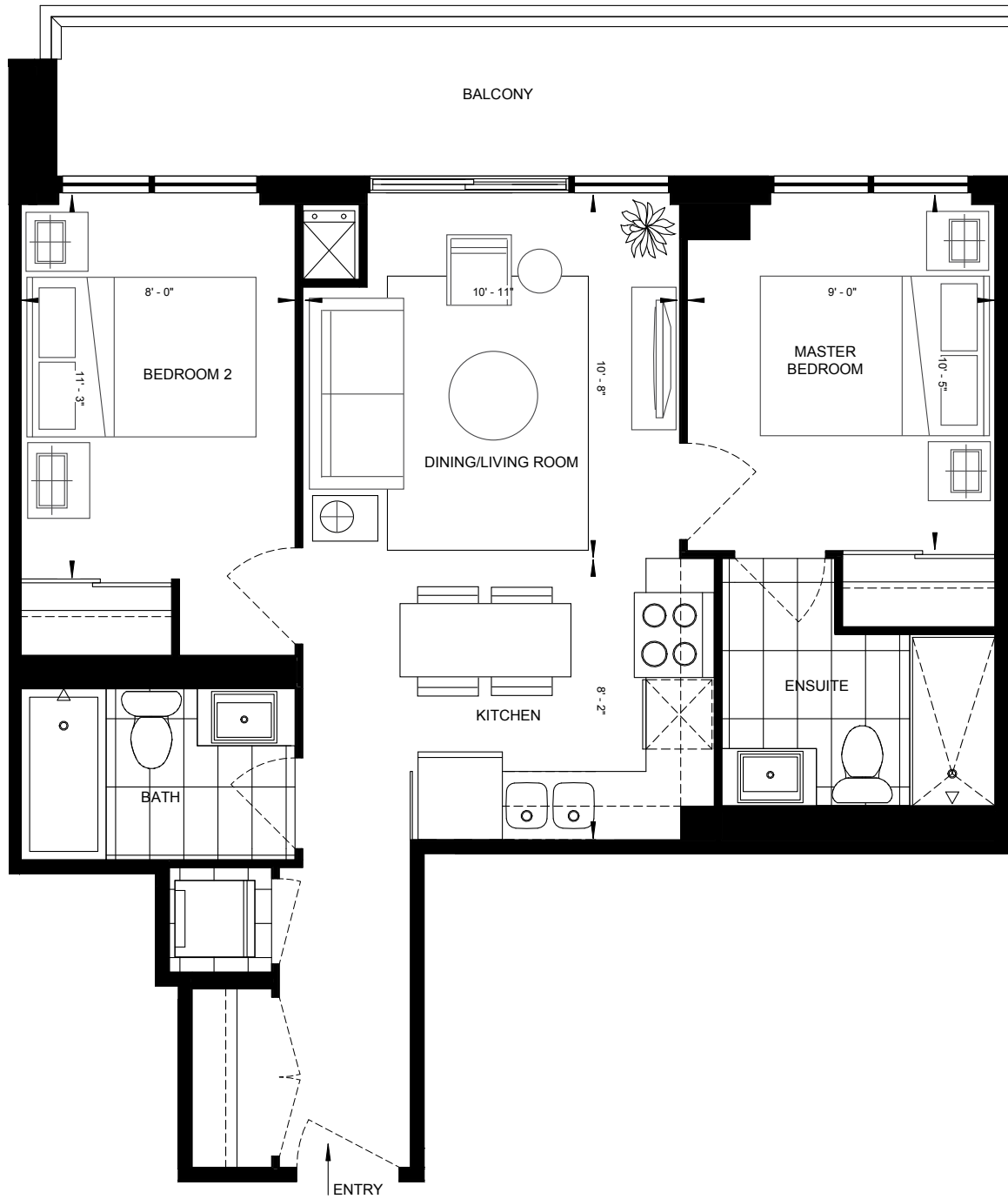
Whenever there are any discrepancies between the dimensions, areas and layout as set out in this Schedule D, and any marketing materials or brochures, the dimensions, areas and layout in the Schedule D shall govern. Dimensions, specifications, layouts, location of materials and fixtures, tile floor patterns and architectural detailing (including window size and location and door size, location and swing) are approximate only and are subject to change or modifications, without notice. Where there is a metal element indicated, metal element's dimension, size and location are approximate only and subject to change without notice. Actual usable floor space varies from stated floor area. Orientation of suite may be reversed and Purchaser agrees to accept same. Balconies, decks and terraces are exclusive use common elements shown for display purposes only and location and size are subject to change without notice. All illustrations are artist concepts only. The provisions of Schedule "X" of the Agreement, including Section 6 and 38, apply to the Schedule. E. & O.E.



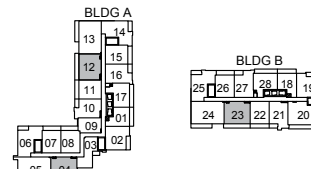
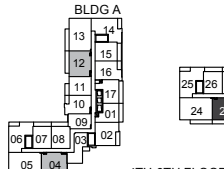
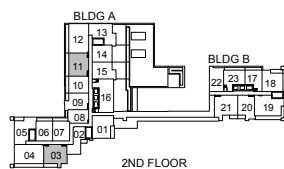
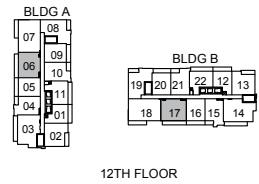
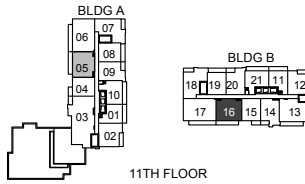
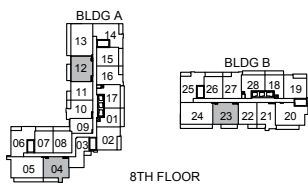
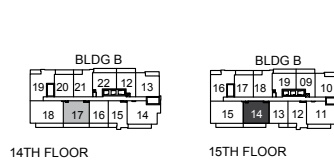
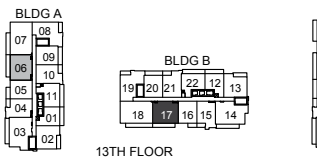
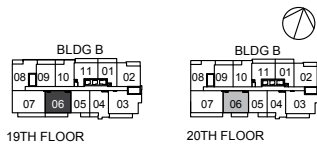
Whenever there are any discrepancies between the dimensions, areas and layout as set out in this Schedule D, and any marketing materials or brochures, the dimensions, areas and layout in the Schedule D shall govern. Dimensions, specifications, layouts, location of materials and fixtures, tile floor patterns and architectural detailing (including window size and location and door size, location and swing) are approximate only and are subject to change or modifications, without notice. Where there is a metal element indicated, metal element's dimension, size and location are approximate only and subject to change without notice. Actual usable floor space varies from stated floor area. Orientation of suite may be reversed and Purchaser agrees to accept same. Balconies, decks and terraces are exclusive use common elements shown for display purposes only and location and size are subject to change without notice. All illustrations are artist concepts only. The provisions of Schedule "X" of the Agreement, including Section 6 and 38, apply to the Schedule. E. & O.E.



Whenever there are any discrepancies between the dimensions, areas and layout as set out in this Schedule D, and any marketing materials or brochures, the dimensions, areas and layout in the Schedule D shall govern. Dimensions, specifications, layouts, location of materials and fixtures, tile floor patterns and architectural detailing (including window size and location and door size, location and swing) are approximate only and are subject to change or modifications, without notice. Where there is a metal element indicated, metal element's dimension, size and location are approximate only and subject to change without notice. Actual usable floor space varies from stated floor area. Orientation of suite may be reversed and Purchaser agrees to accept same. Balconies, decks and terraces are exclusive use common elements shown for display purposes only and location and size are subject to change without notice. All illustrations are artist concepts only. The provisions of Schedule "X" of the Agreement, including Section 6 and 38, apply to the Schedule. E. & O.E.



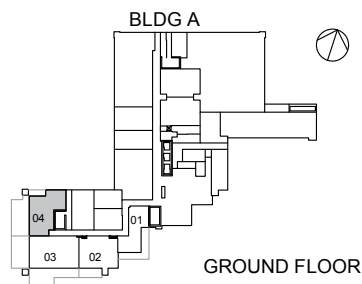
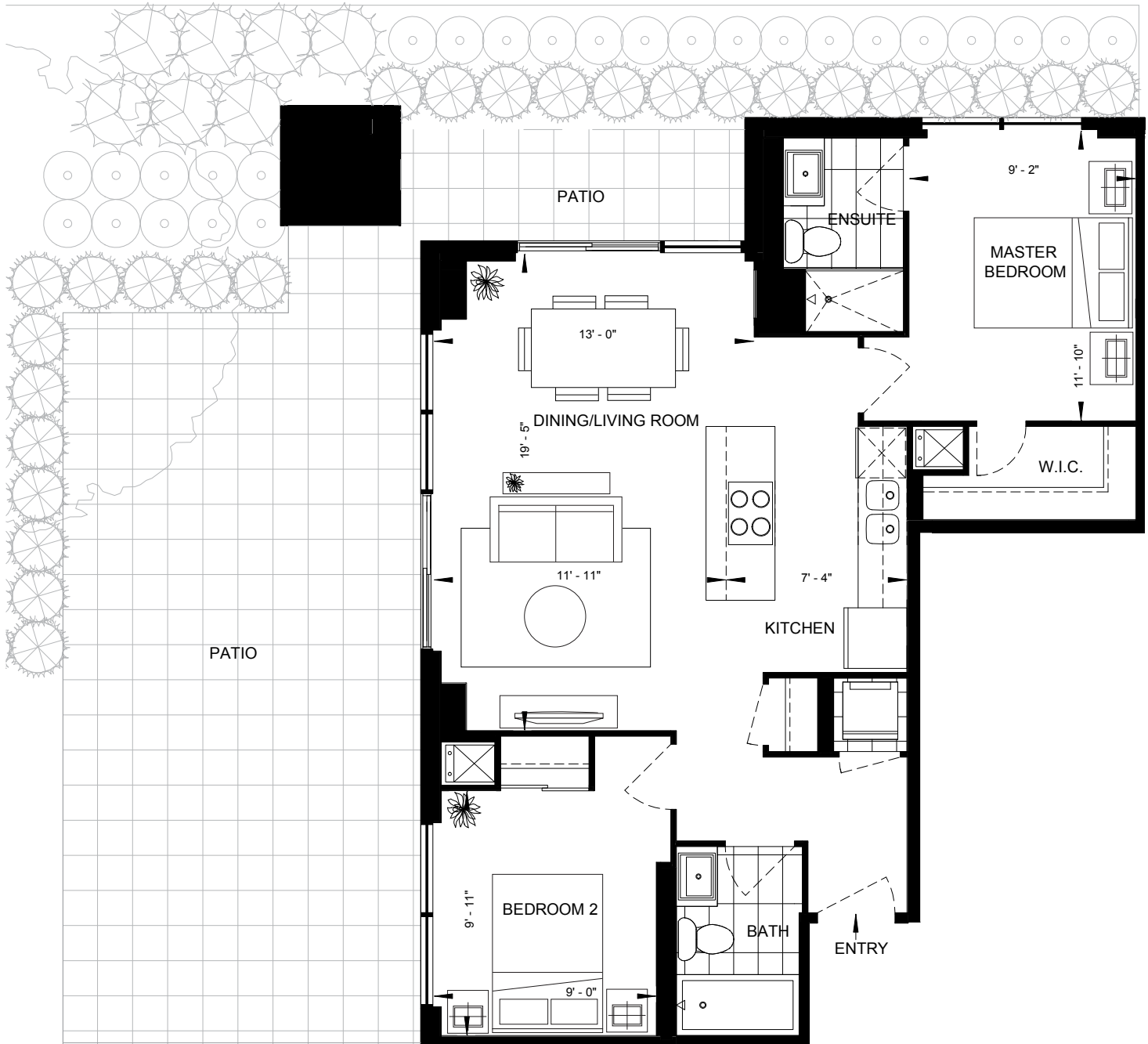
Whenever there are any discrepancies between the dimensions, areas and layout as set out in this Schedule D, and any marketing materials or brochures, the dimensions, areas and layout in the Schedule D shall govern. Dimensions, specifications, layouts, location of materials and fixtures, tile floor patterns and architectural detailing (including window size and location and door size, location and swing) are approximate only and are subject to change or modifications, without notice. Where there is a metal element indicated, metal element's dimension, size and location are approximate only and subject to change without notice. Actual usable floor space varies from stated floor area. Orientation of suite may be reversed and Purchaser agrees to accept same. Balconies, decks and terraces are exclusive use common elements shown for display purposes only and location and size are subject to change without notice. All illustrations are artist concepts only. The provisions of Schedule "X" of the Agreement, including Section 6 and 38, apply to the Schedule. E. & O.E.



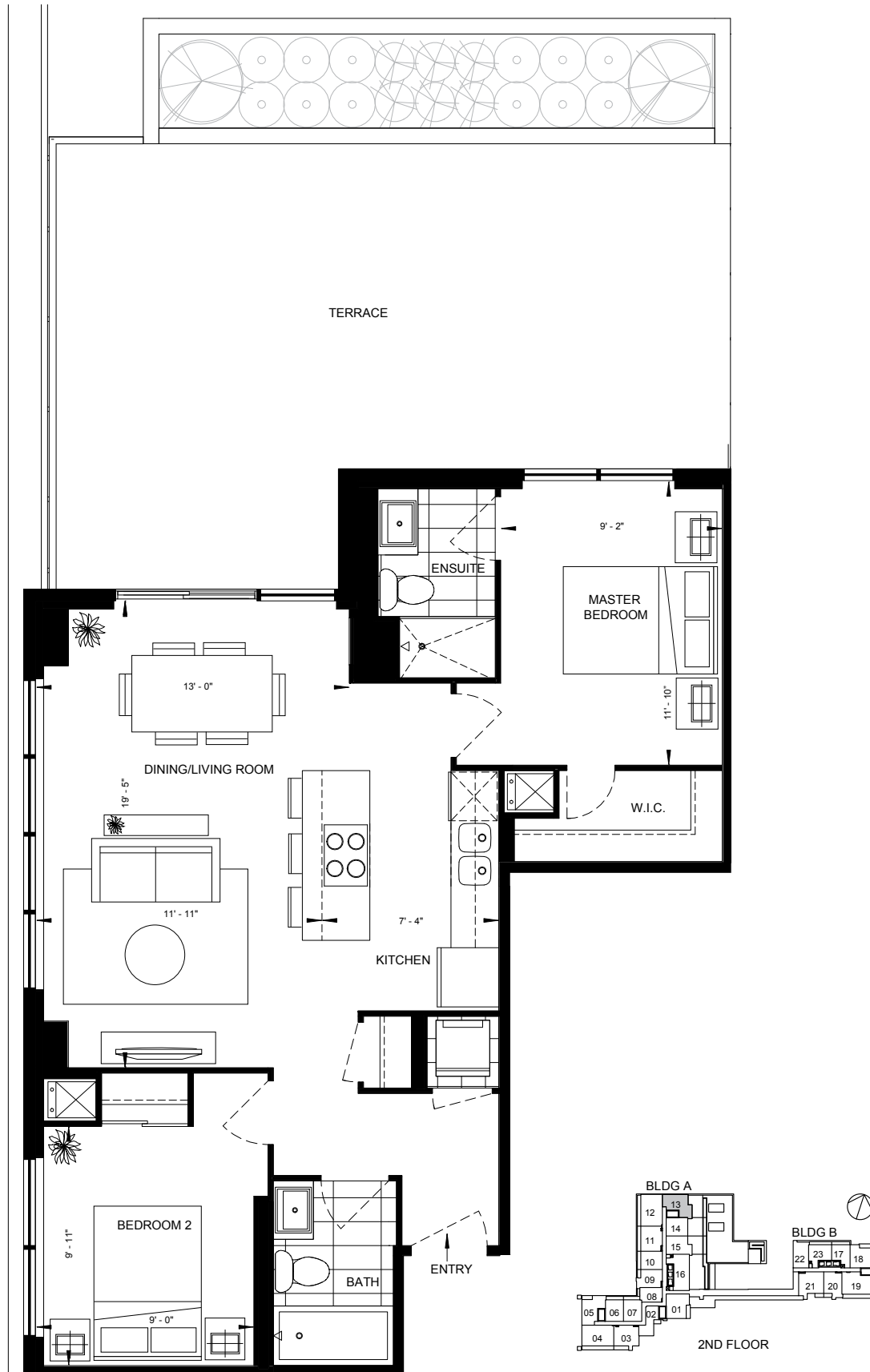
Whenever there are any discrepancies between the dimensions, areas and layout as set out in this Schedule D, and any marketing materials or brochures, the dimensions, areas and layout in the Schedule D shall govern. Dimensions, specifications, layouts, location of materials and fixtures, tile floor patterns and architectural detailing (including window size and location and door size, location and swing) are approximate only and are subject to change or modifications, without notice. Where there is a metal element indicated, metal element's dimension, size and location are approximate only and subject to change without notice. Actual usable floor space varies from stated floor area. Orientation of suite may be reversed and Purchaser agrees to accept same. Balconies, decks and terraces are exclusive use common elements shown for display purposes only and location and size are subject to change without notice. All illustrations are artist concepts only. The provisions of Schedule "X" of the Agreement, including Section 6 and 38, apply to the Schedule. E. & O.E.



Whenever there are any discrepancies between the dimensions, areas and layout as set out in this Schedule D, and any marketing materials or brochures, the dimensions, areas and layout in the Schedule D shall govern. Dimensions, specifications, layouts, location of materials and fixtures, tile floor patterns and architectural detailing (including window size and location and door size, location and swing) are approximate only and are subject to change or modifications, without notice. Where there is a metal element indicated, metal element's dimension, size and location are approximate only and subject to change without notice. Actual usable floor space varies from stated floor area. Orientation of suite may be reversed and Purchaser agrees to accept same. Balconies, decks and terraces are exclusive use common elements shown for display purposes only and location and size are subject to change without notice. All illustrations are artist concepts only. The provisions of Schedule "X" of the Agreement, including Section 6 and 38, apply to the Schedule. E. & O.E.

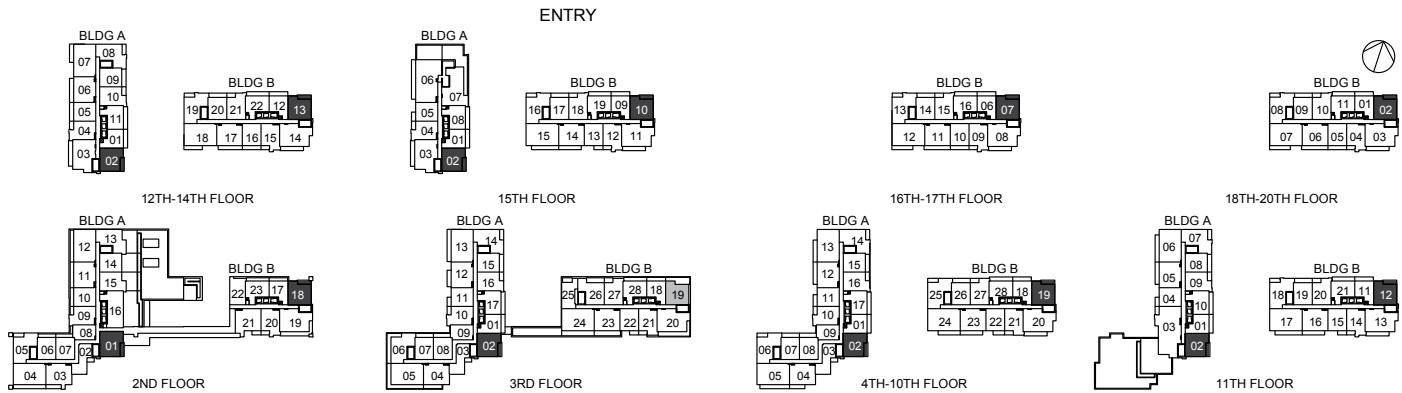


GROUND FLOOR

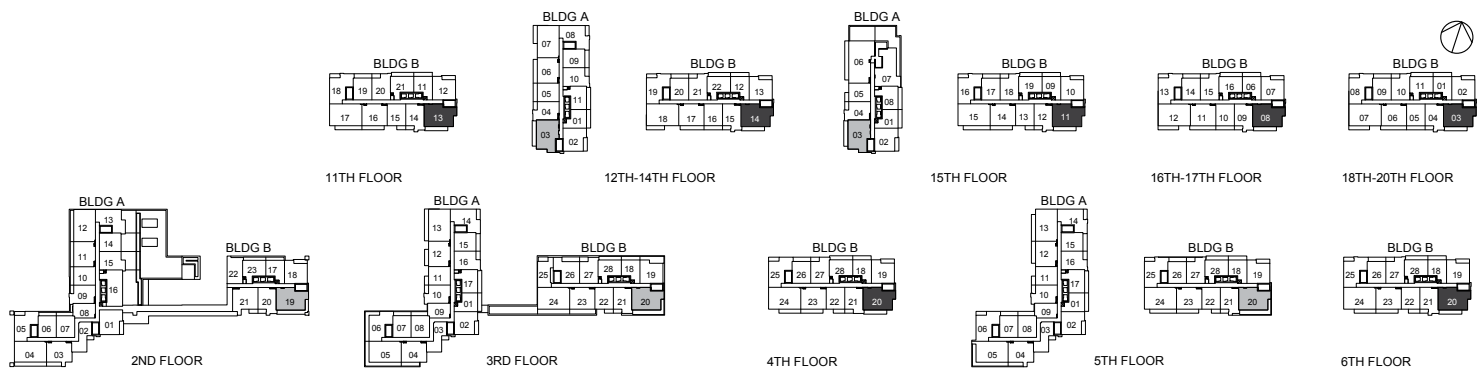
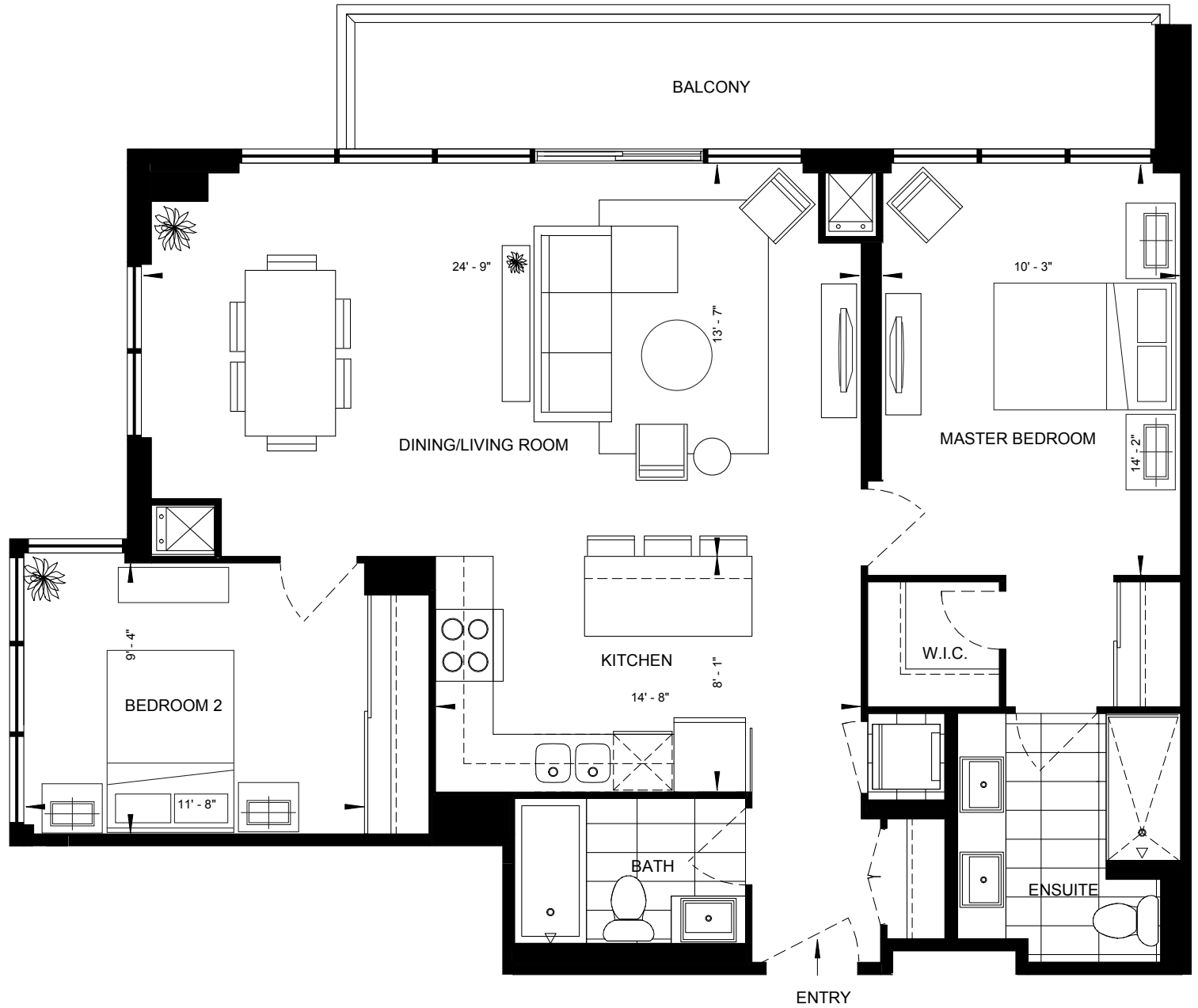


Whenever there are any discrepancies between the dimensions, areas and layout as set out in this Schedule D, and any marketing materials or brochures, the dimensions, areas and layout in the Schedule D shall govern. Dimensions, specifications, layouts, location of materials and fixtures, tile floor patterns and architectural detailing (including window size and location and door size, location and swing) are approximate only and are subject to change or modifications, without notice. Where there is a metal element indicated, metal element's dimension, size and location are approximate only and subject to change without notice. Actual usable floor space varies from stated floor area. Orientation of suite may be reversed and Purchaser agrees to accept same. Balconies, decks and terraces are exclusive use common elements shown for display purposes only and location and size are subject to change without notice. All illustrations are artist concepts only. The provisions of Schedule "X" of the Agreement, including Section 6 and 38, apply to the Schedule. E. & O.E.

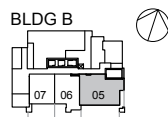
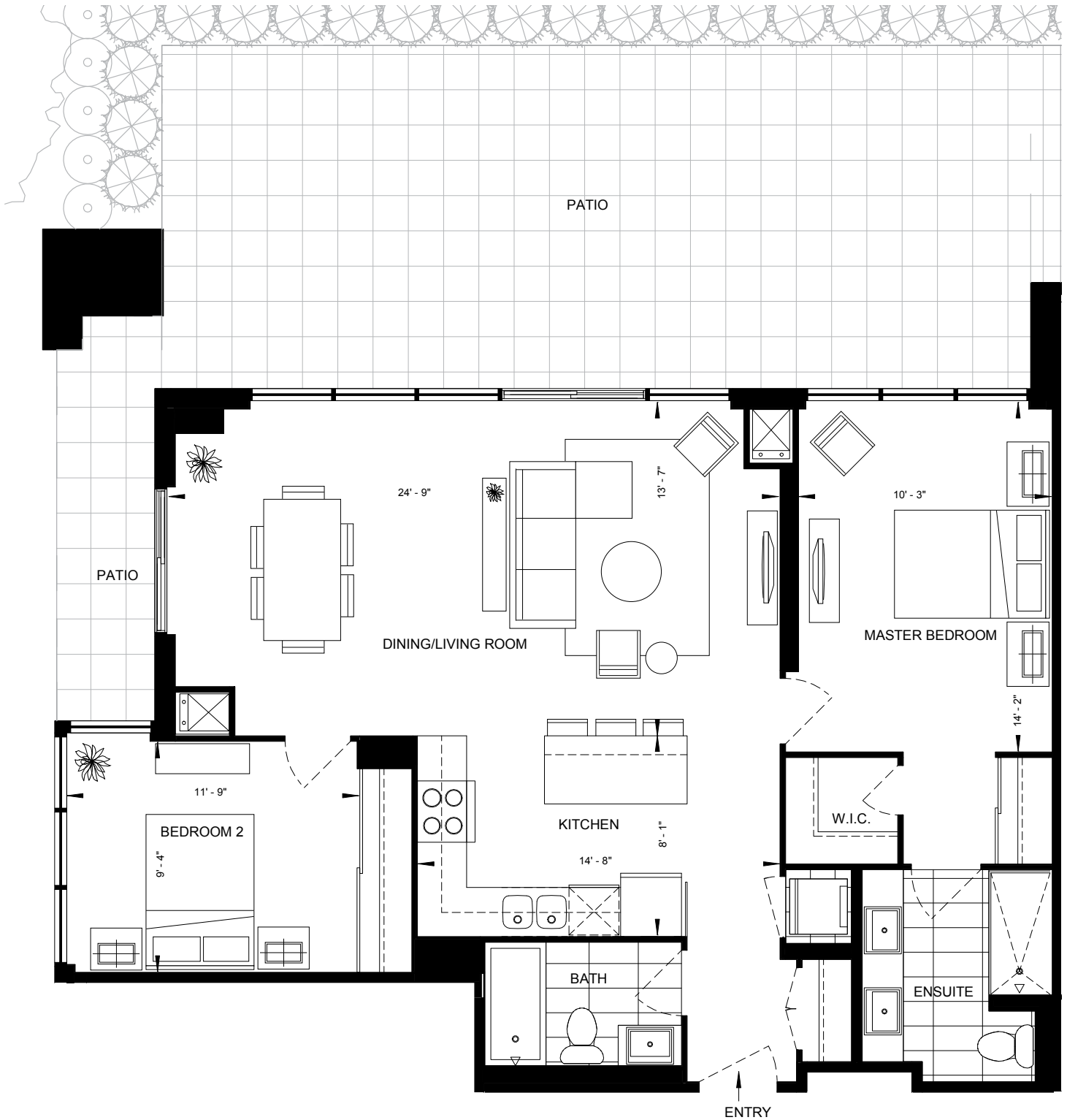




Whenever there are any discrepancies between the dimensions, areas and layout as set out in this Schedule D, and any marketing materials or brochures, the dimensions, areas and layout in the Schedule D shall govern. Dimensions, specifications, layouts, location of materials and fixtures, tile floor patterns and architectural detailing (including window size and location and door size, location and swing) are approximate only and are subject to change or modifications, without notice. Where there is a metal element indicated, metal element's dimension, size and location are approximate only and subject to change without notice. Actual usable floor space varies from stated floor area. Orientation of suite may be reversed and Purchaser agrees to accept same. Balconies, decks and terraces are exclusive use common elements shown for display purposes only and location and size are subject to change without notice. All illustrations are artist concepts only. The provisions of Schedule "X" of the Agreement, including Section 6 and 38, apply to the Schedule. E. & O.E.

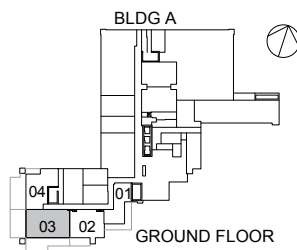
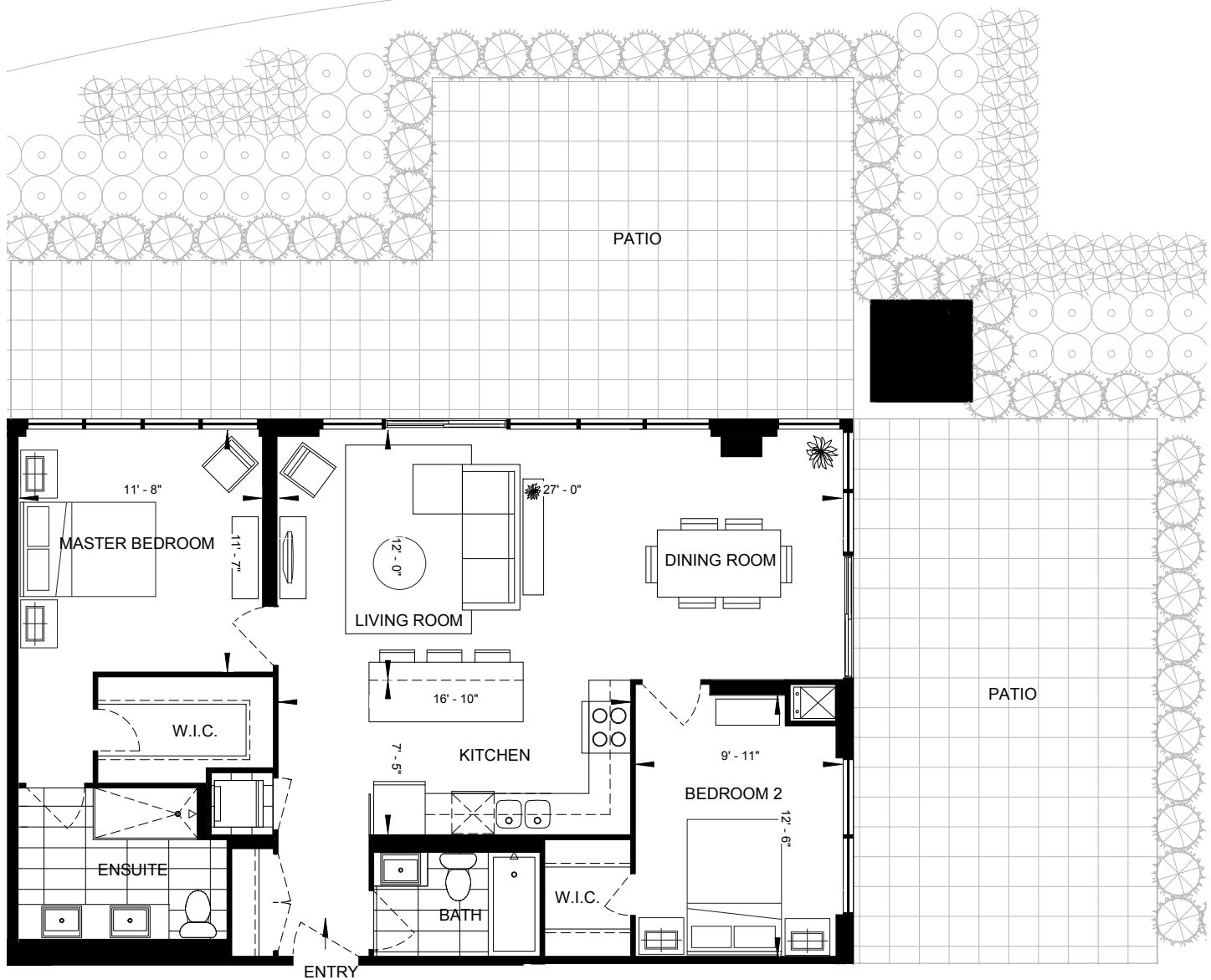


Whenever there are any discrepancies between the dimensions, areas and layout as set out in this Schedule D, and any marketing materials or brochures, the dimensions, areas and layout in the Schedule D shall govern. Dimensions, specifications, layouts, location of materials and fixtures, tile floor patterns and architectural detailing (including window size and location and door size, location and swing) are approximate only and are subject to change or modifications, without notice. Where there is a metal element indicated, metal element's dimension, size and location are approximate only and subject to change without notice. Actual usable floor space varies from stated floor area. Orientation of suite may be reversed and Purchaser agrees to accept same. Balconies, decks and terraces are exclusive use common elements shown for display purposes only and location and size are subject to change without notice. All illustrations are artist concepts only. The provisions of Schedule "X" of the Agreement, including Section 6 and 38, apply to the Schedule. E. & O.E.

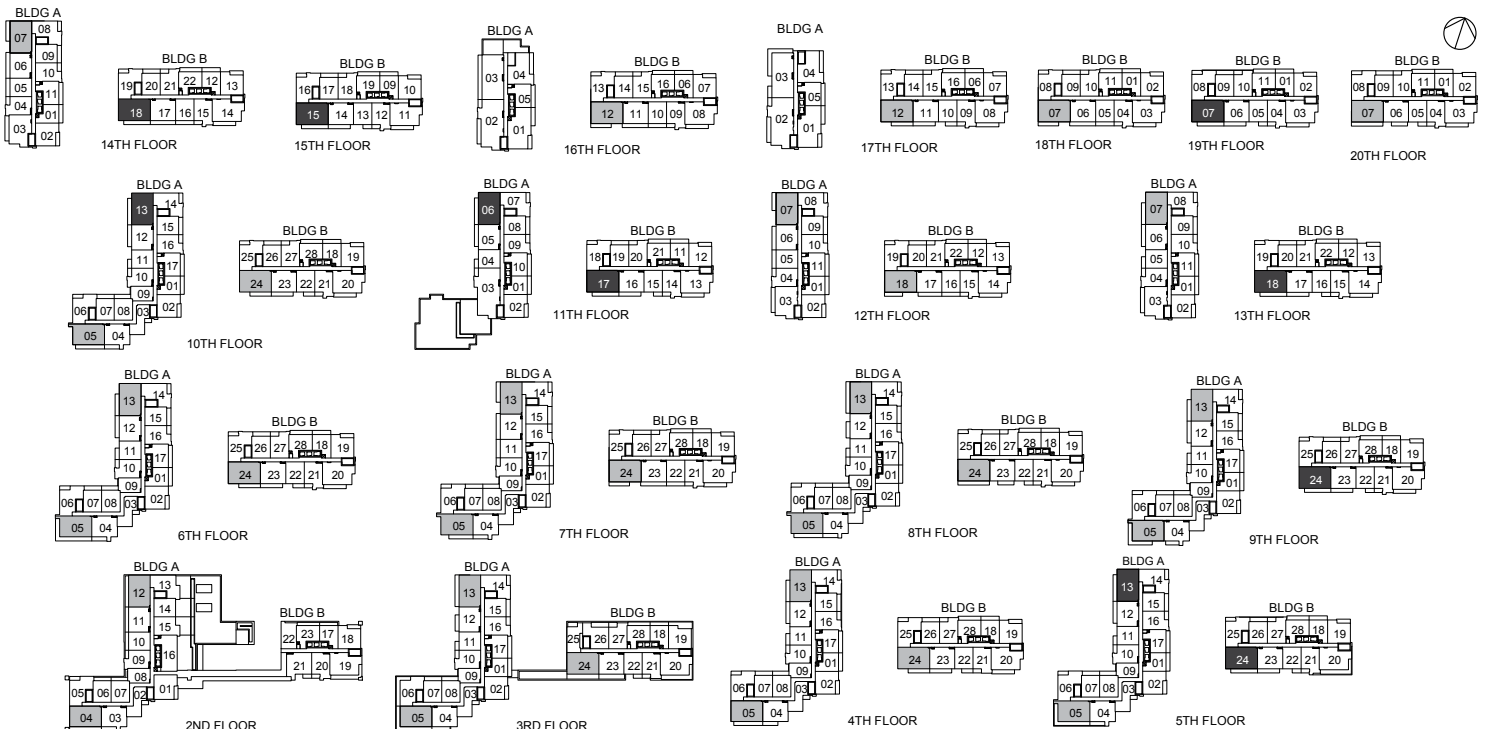
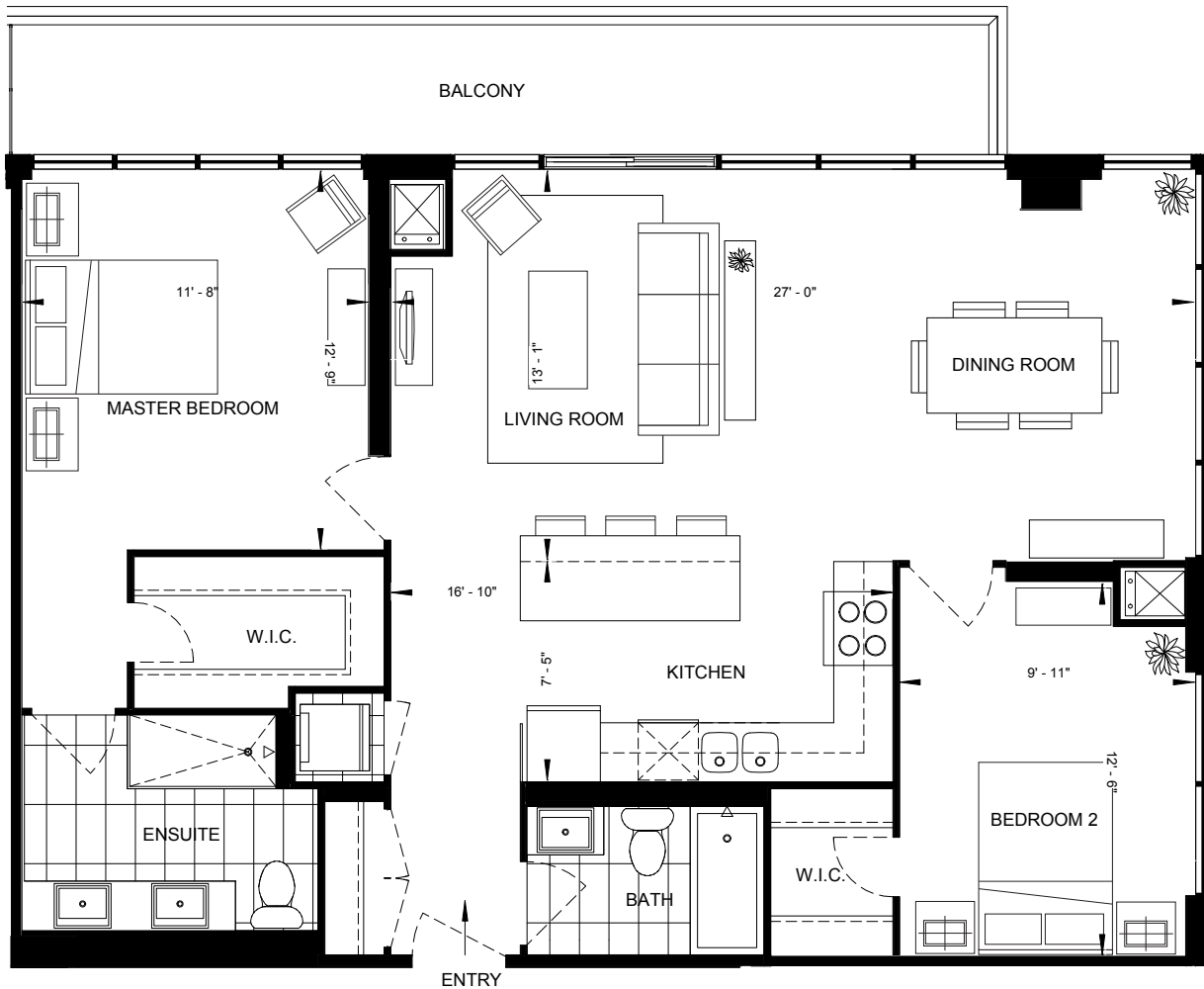


GROUND FLOOR

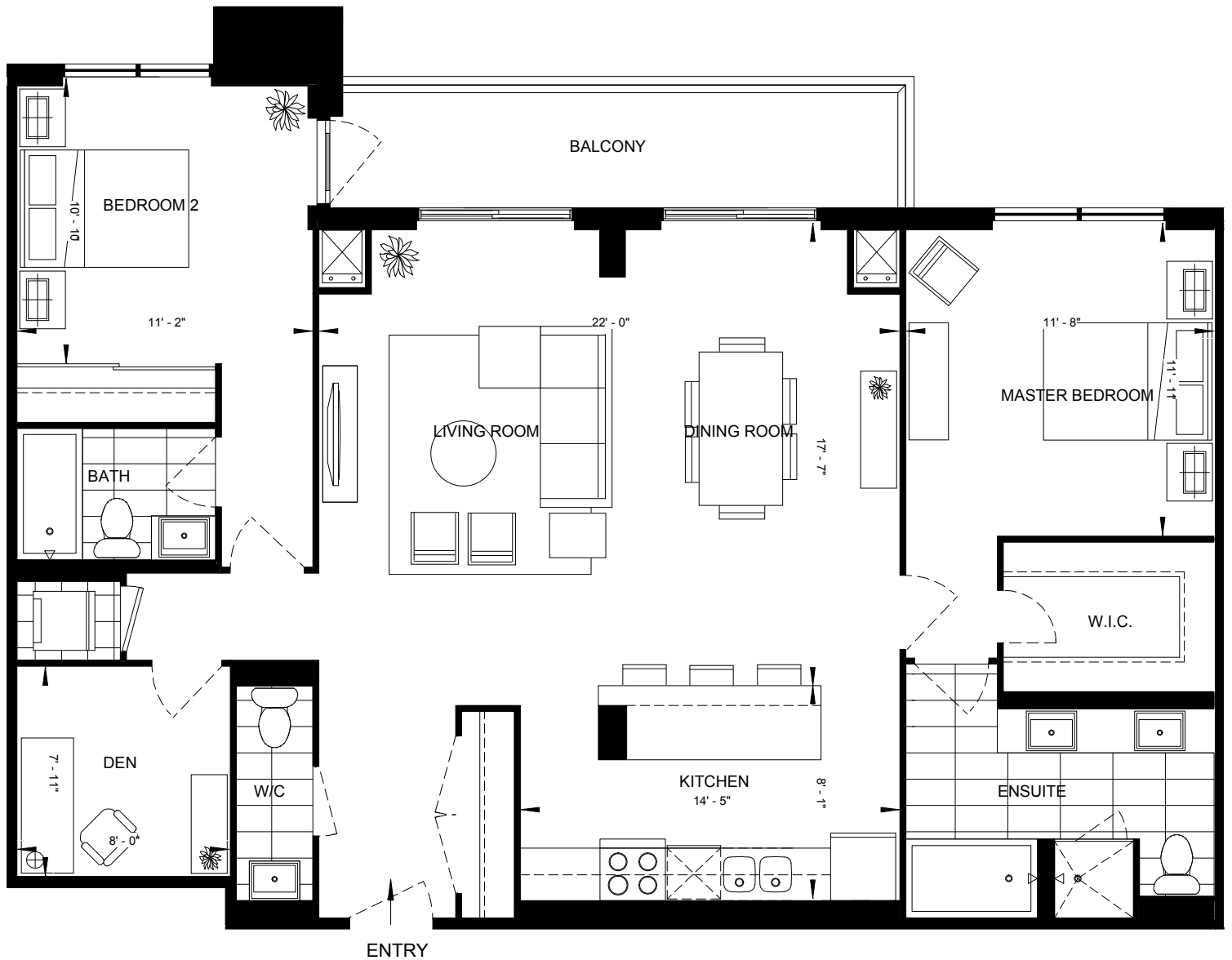
Whenever there are any discrepancies between the dimensions, areas and layout as set out in this Schedule D, and any marketing materials or brochures, the dimensions, areas and layout in the Schedule D shall govern. Dimensions, specifications, layouts, location of materials and fixtures, tile floor patterns and architectural detailing (including window size and location and door size, location and swing) are approximate only and are subject to change or modifications, without notice. Where there is a metal element indicated, metal element's dimension, size and location are approximate only and subject to change without notice. Actual usable floor space varies from stated floor area. Orientation of suite may be reversed and Purchaser agrees to accept same. Balconies, decks and terraces are exclusive use common elements shown for display purposes only and location and size are subject to change without notice. All illustrations are artist concepts only. The provisions of Schedule "X" of the Agreement, including Section 6 and 38, apply to the Schedule. E. & O.E.



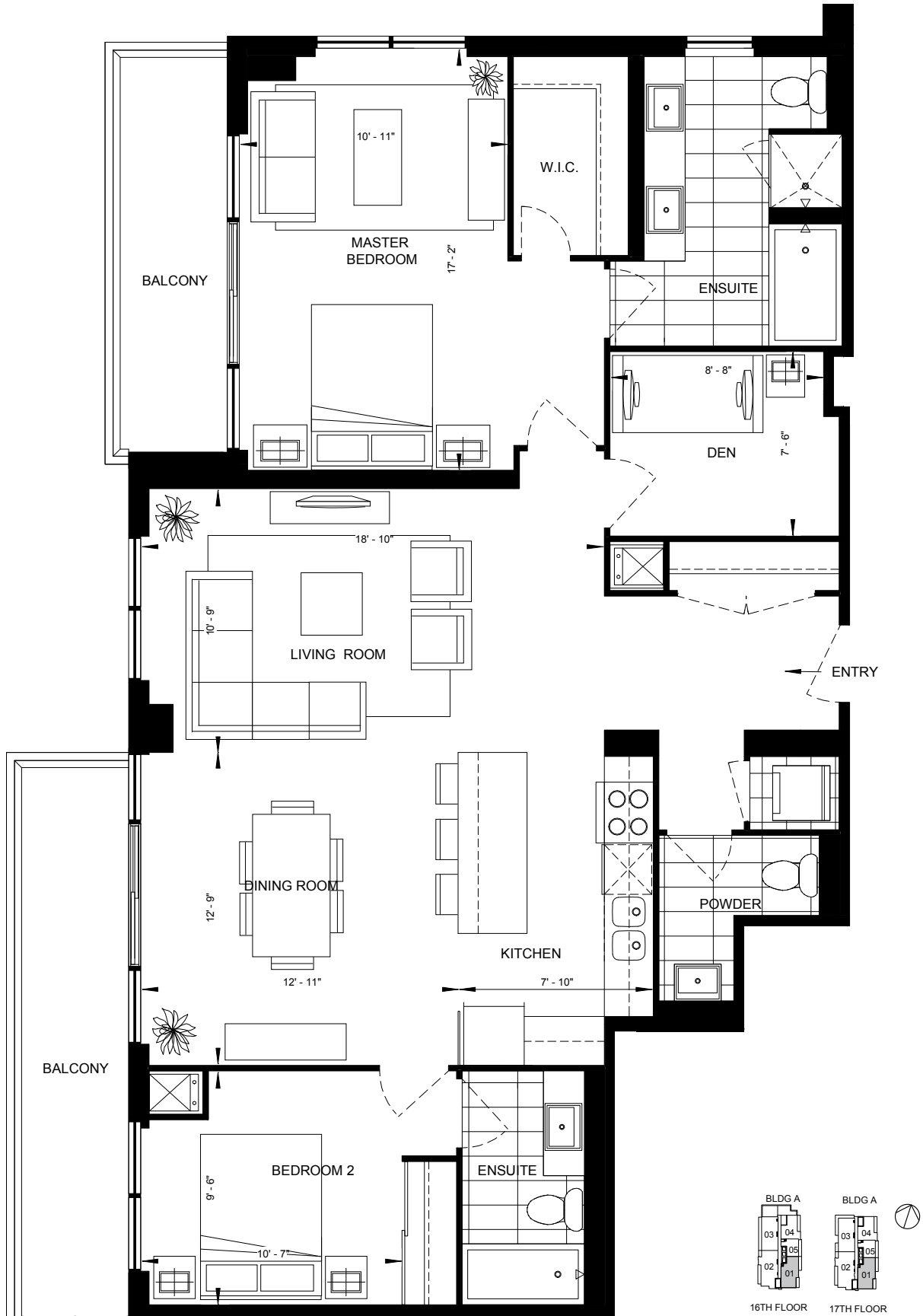
Whenever there are any discrepancies between the dimensions, areas and layout as set out in this Schedule D, and any marketing materials or brochures, the dimensions, areas and layout in the Schedule D shall govern. Dimensions, specifications, layouts, location of materials and fixtures, tile floor patterns and architectural detailing (including window size and location and door size, location and swing) are approximate only and are subject to change or modifications, without notice. Where there is a metal element indicated, metal element's dimension, size and location are approximate only and subject to change without notice. Actual usable floor space varies from stated floor area. Orientation of suite may be reversed and Purchaser agrees to accept same. Balconies, decks and terraces are exclusive use common elements shown for display purposes only and location and size are subject to change without notice. All illustrations are artist concepts only. The provisions of Schedule "X" of the Agreement, including Section 6 and 38, apply to the Schedule. E. & O.E.

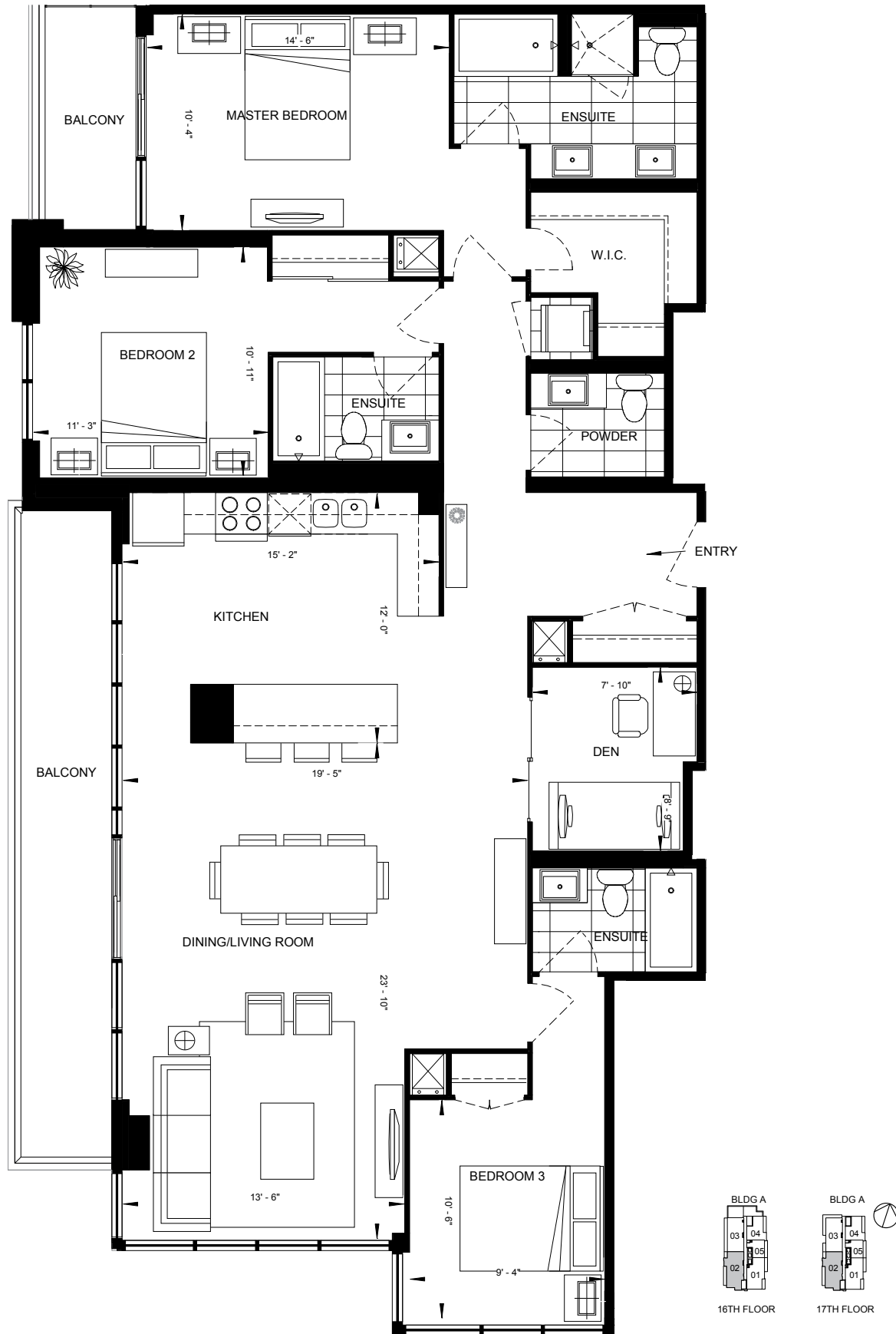


Whenever there are any discrepancies between the dimensions, areas and layout as set out in this Schedule D, and any marketing materials or brochures, the dimensions, areas and layout in the Schedule D shall govern. Dimensions, specifications, layouts, location of materials and fixtures, tile floor patterns and architectural detailing (including window size and location and door size, location and swing) are approximate only and are subject to change or modifications, without notice. Where there is a metal element indicated, metal element's dimension, size and location are approximate only and subject to change without notice. Actual usable floor space varies from stated floor area. Orientation of suite may be reversed and Purchaser agrees to accept same. Balconies, decks and terraces are exclusive use common elements shown for display purposes only and location and size are subject to change without notice. All illustrations are artist concepts only. The provisions of Schedule "X" of the Agreement, including Section 6 and 38, apply to the Schedule. E & O.E.



Whenever there are any discrepancies between the dimensions, areas and layout as set out in this Schedule D, and any marketing materials or brochures, the dimensions, areas and layout in the Schedule D shall govern. Dimensions, specifications, layouts, location of materials and fixtures, tile floor patterns and architectural detailing (including window size and location and door size, location and swing) are approximate only and are subject to change or modifications, without notice. Where there is a metal element indicated, metal element's dimension, size and location are approximate only and subject to change without notice. Actual usable floor space varies from stated floor area. Orientation of suite may be reversed and Purchaser agrees to accept same. Balconies, decks and terraces are exclusive use common elements shown for display purposes only and location and size are subject to change without notice. All illustrations are artist concepts only. The provisions of Schedule "X" of the Agreement, including Section 6 and 38, apply to the Schedule. E. & O.E.





Whenever there are any discrepancies between the dimensions, areas and layout as set out in this Schedule D, and any marketing materials or brochures, the dimensions, areas and layout in the Schedule D shall govern. Dimensions, specifications, layouts, location of materials and fixtures, tile floor patterns and architectural detailing (including window size and location and door size, location and swing) are approximate only and are subject to change or modifications, without notice. Where there is a metal element indicated, metal element's dimension, size and location are approximate only and subject to change without notice. Actual usable floor space varies from stated floor area. Orientation of suite may be reversed and Purchaser agrees to accept same. Balconies, decks and terraces are exclusive use common elements shown for display purposes only and location and size are subject to change without notice. All illustrations are artist concepts only. The provisions of Schedule "X" of the Agreement, including Section 6 and 38, apply to the Schedule. E. & O.E.