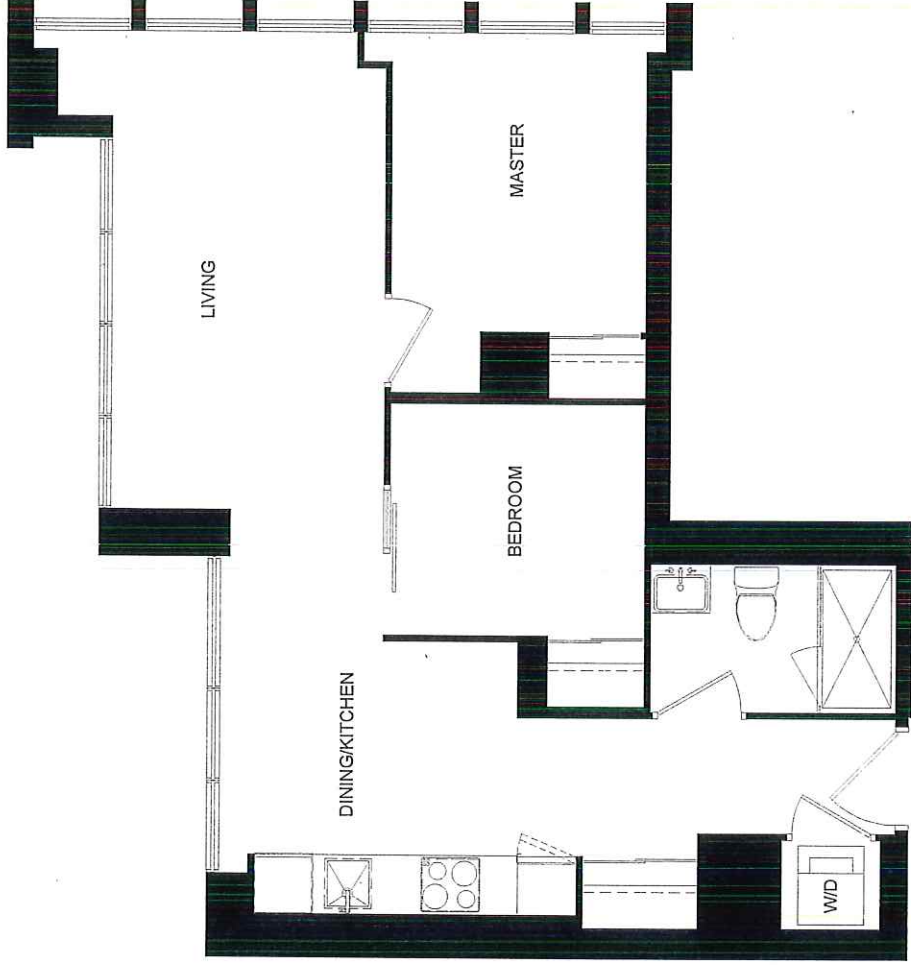


SUITE 2503
UNIT TYPE 2J

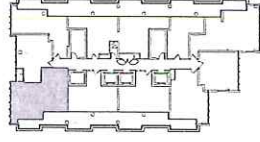


SUITE AREA:

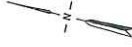
697 SQ. FT.

LEGAL LEVEL:

24



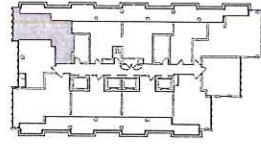
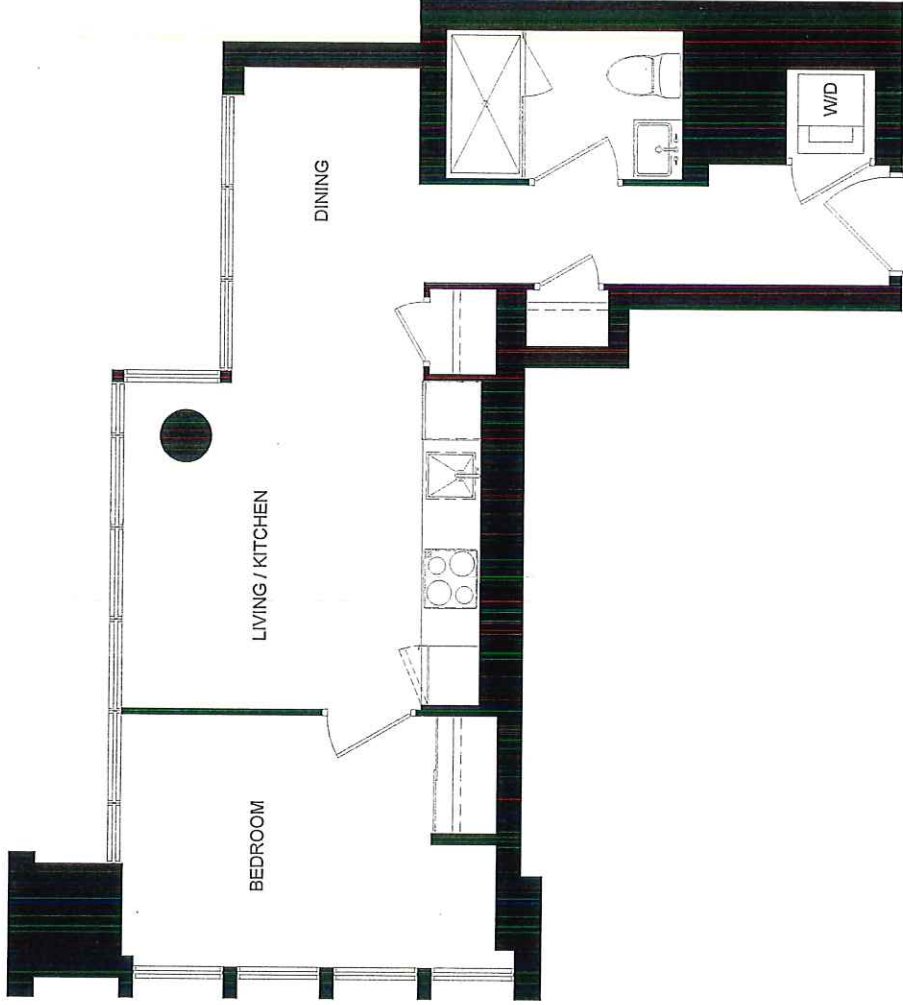
FLOOR 25



ISSUE DATE: 17 SEPTEMBER 2020



SUITE 2505
UNIT TYPE 1K



FLOOR 25



SUITE AREA: 544 SQ. FT.
LEGAL LEVEL: 24

ISSUE DATE: 17 SEPTEMBER 2020



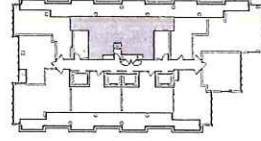
Disclaimer: Drawings are not to scale. Materials, specifications, & floor plans are subject to change without notice. All rendering are artist's conceptions. All areas and stated room dimensions are approximate. Actual usable floor space may vary from the stated floor area. Floor area measured in accordance with Tarion Warranty Corporation Bulletin #22, E.80.E. Balcony sizes and configurations vary depending on floor level locations.

SUITE 2506
UNIT TYPE 2M



SUITE AREA: 900 SQ. FT.

LEGAL LEVEL: 24



FLOOR 25

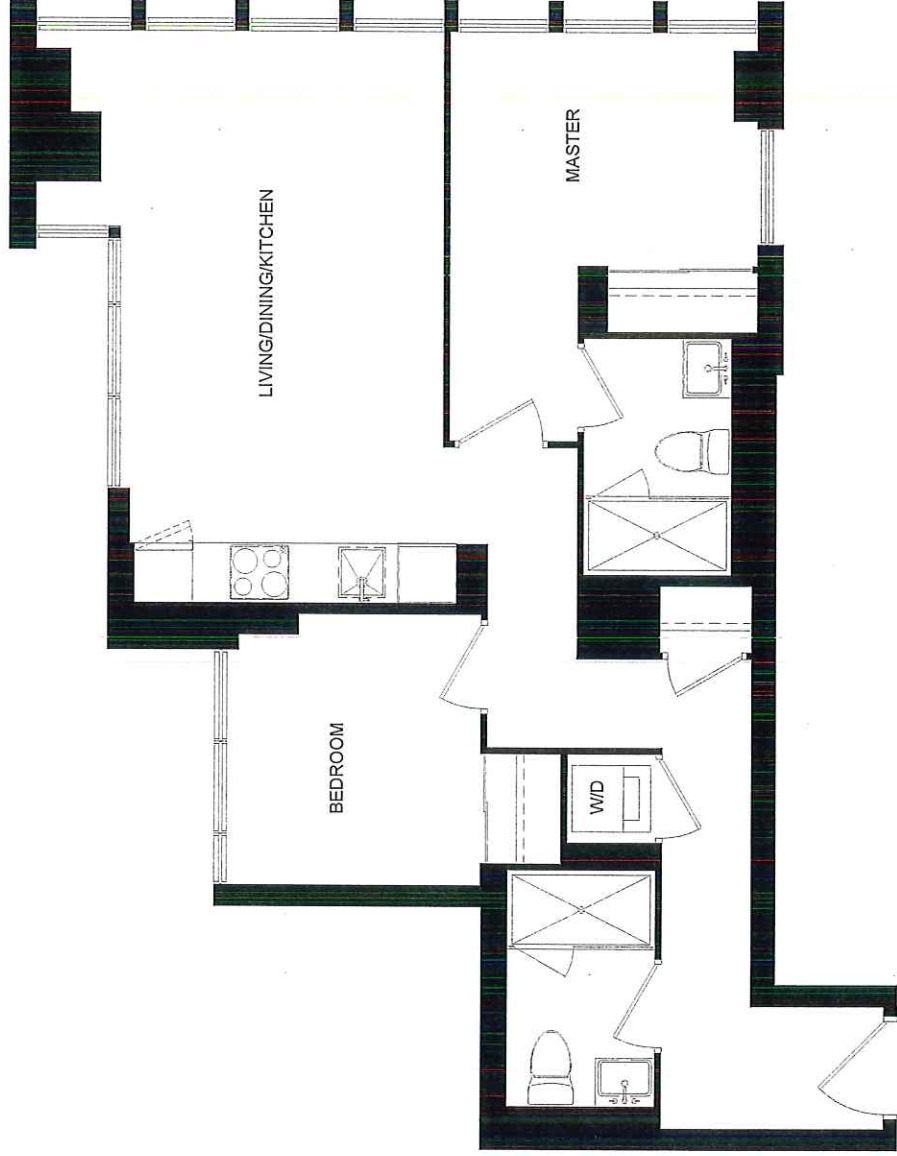


ISSUE DATE: 17 SEPTEMBER 2020



ASPENRIDGE

SUITE 2508
UNIT TYPE 2K

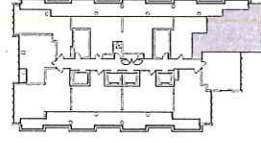


SUITE AREA:

767 SQ. FT.

LEGAL LEVEL:

24



FLOOR 25



ISSUE DATE: 17 SEPTEMBER 2020



ASPENRIDGE