

wn



TRIDEL
BUILT FOR LIFE

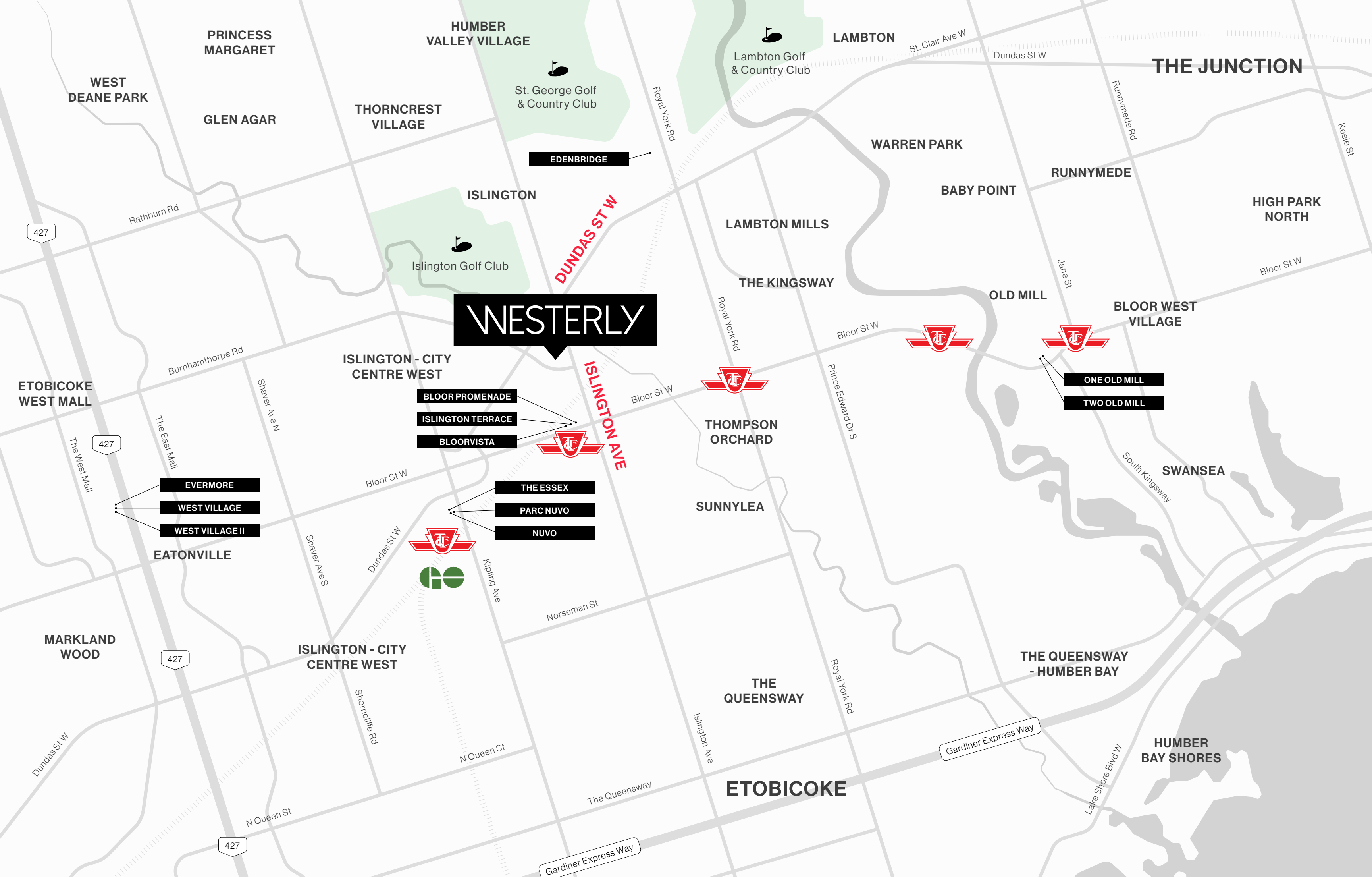


VIEW FROM ISLINGTON GOLF CLUB

WESTERLY

DISCOVER THE NEW ETOBICOKE





WESTERLY

BLOOR PROMENADE

ISLINGTON TERRACE

BLOORVISTA

THE ESSEX

PARC NUVO

NUVO

ONE OLD MILL

TWO OLD MILL

EVERMORE

WEST VILLAGE

WEST VILLAGE II

EATONVILLE

ISLINGTON - CITY CENTRE WEST

ISLINGTON - CITY CENTRE WEST

ISLINGTON

HUMBER VALLEY VILLAGE

LAMBTON

THE JUNCTION

WARREN PARK

RUNNYMEDE

HIGH PARK NORTH

LAMBTON MILLS

THE KINGSWAY

OLD MILL

BLOOR WEST VILLAGE

THOMPSON ORCHARD

SWANSEA

SUNNYLEA

MARKLAND WOOD

ISLINGTON - CITY CENTRE WEST

THE QUEENSWAY - HUMBER BAY

THE QUEENSWAY

HUMBER BAY SHORES

ETOBICOKE

PRINCESS MARGARET

WEST DEANE PARK

GLEN AGAR

THORNCREST VILLAGE

St. George Golf & Country Club

Lambton Golf & Country Club

Islington Golf Club

ETOBICOKE WEST MALL

Burnhamthorpe Rd

Shaver Ave N

The East Mall

The West Mall

Bloor St W

Shaver Ave S

Dundas St W

Kipling Ave

Norseman St

N Queen St

N Queen St

The Queensway

Royal York Rd

Gardiner Express Way

Lake Shore Blvd W

Royal York Rd

Royal York Rd

Prince Edward Dr S

St. Clair Ave W

Dundas St W

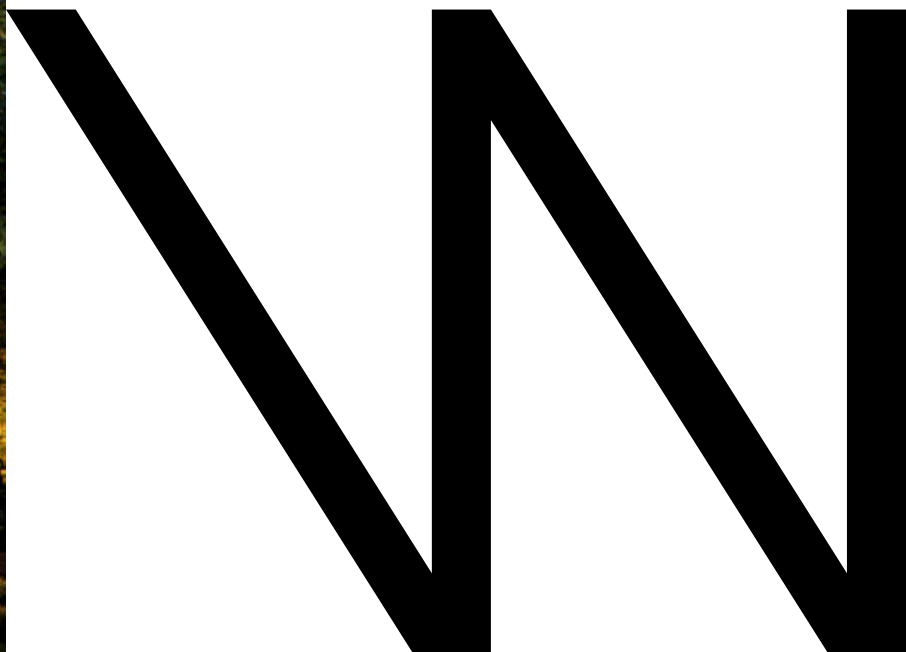
Runnymede Rd

Keeler St

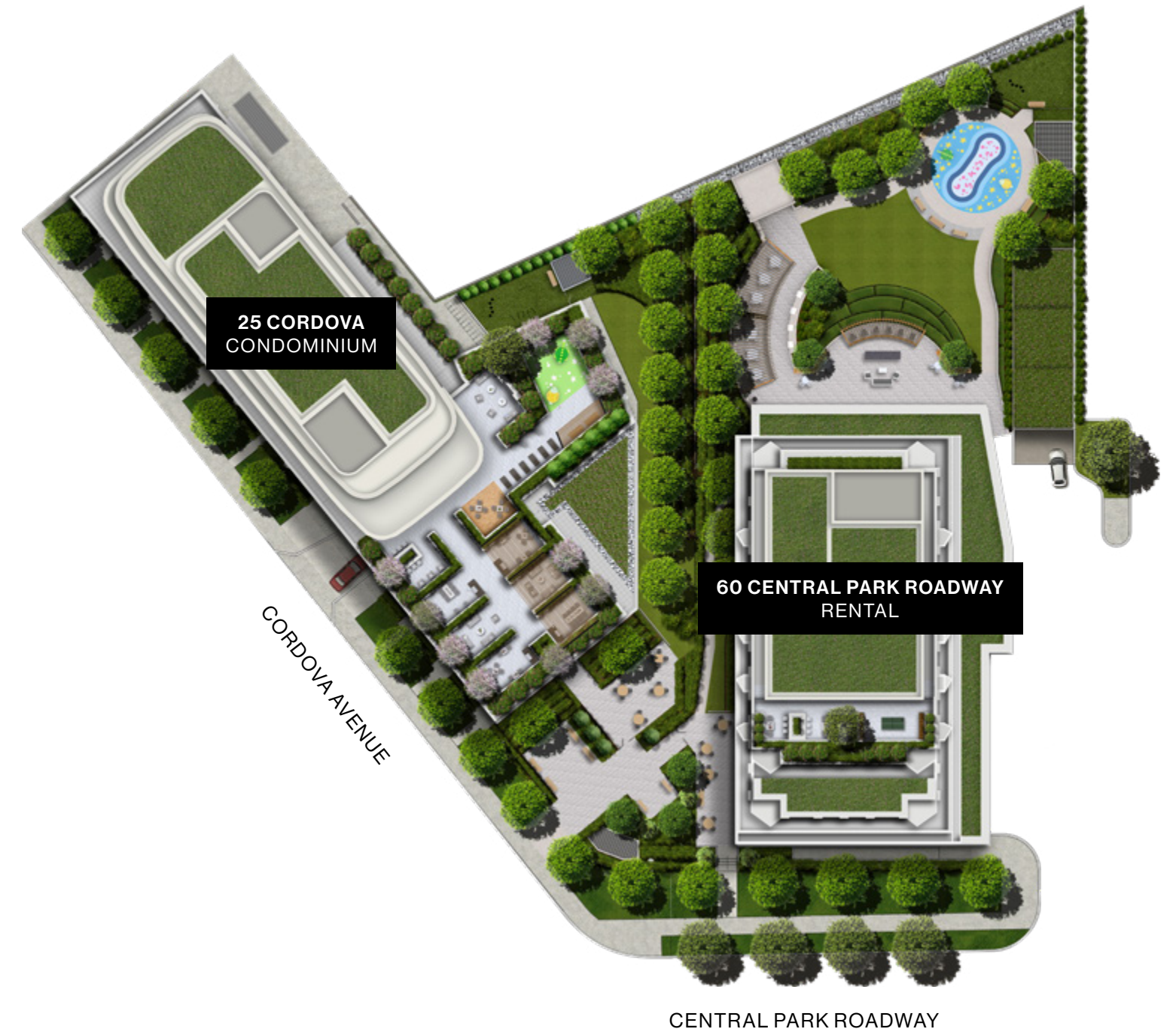
Bloor St W

Jane St

South Kingsway



WESTERLY



SITEPLAN





MAIN ENTRANCE





PARTY ROOM LOUNGE



PARTY ROOM DINING



PARTY ROOM









5TH FLOOR OUTDOOR TERRACE



OUTDOOR DINING AREA

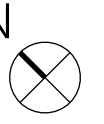


OUTDOOR FIREPLACE LOUNGE



OUTDOOR LOUNGE





1ST FLOOR AMENITIES

1. LOBBY
2. MAILROOM / PARCEL
3. ELEVATORS
4. FITNESS STUDIO
5. YOGA STUDIO
6. GUEST SUITE





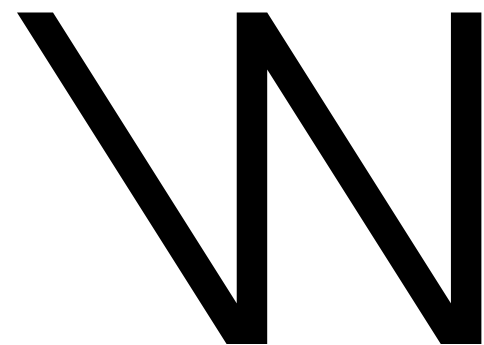
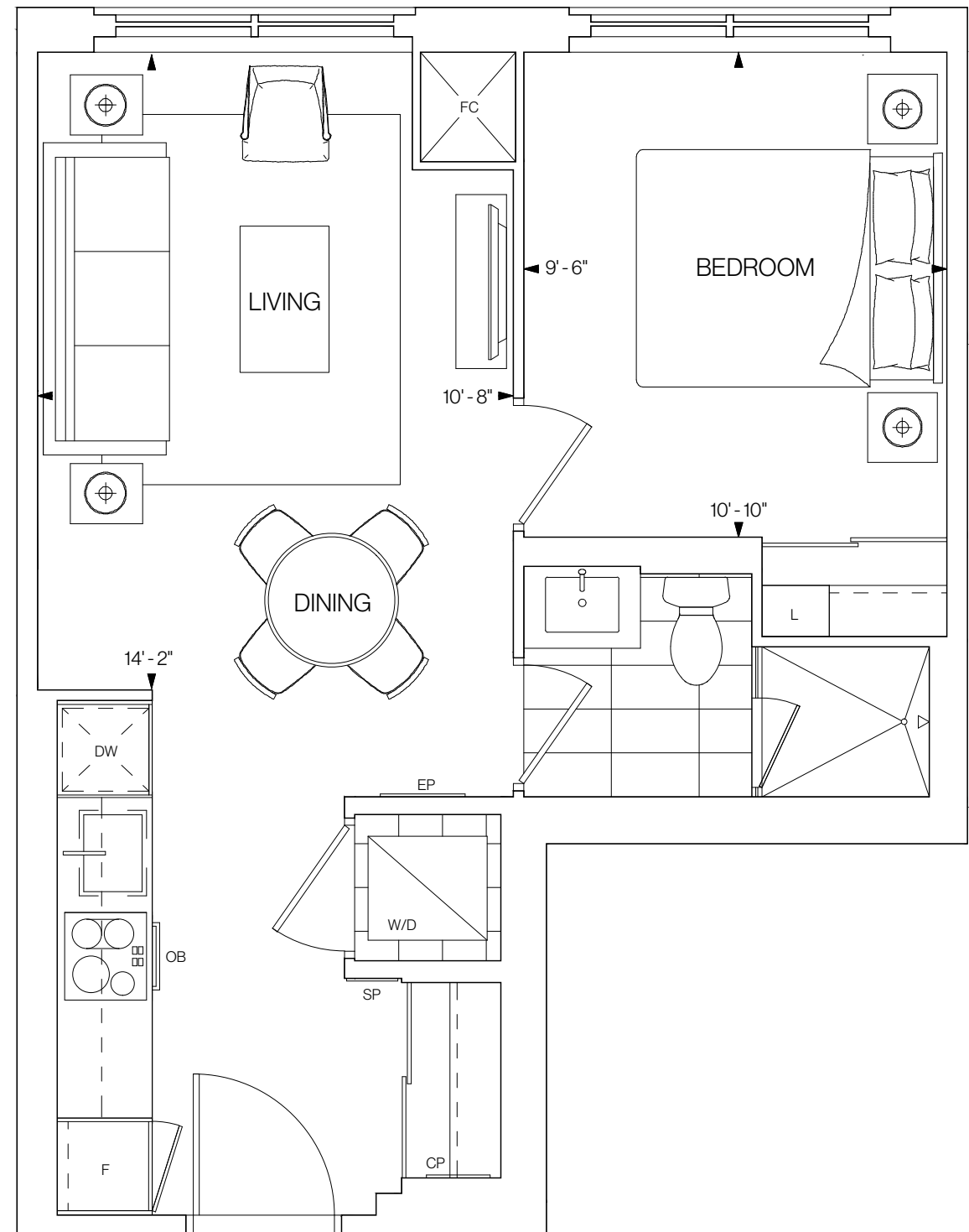
5TH FLOOR AMENITIES

1. PARTY ROOM LOUNGE
2. PARTY ROOM DINING
3. YOUTH ROOM
4. OUTDOOR DINING & BBQ AREA
5. FIREPLACE LOUNGE
6. KIDS PLAYGROUND



WESTERLY





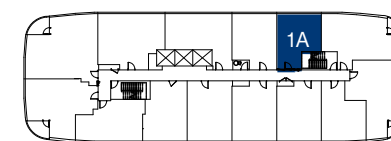
1A

502 SQ.FT.

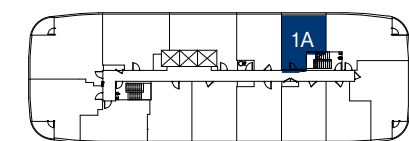
1 BEDROOM 1 BATHROOM

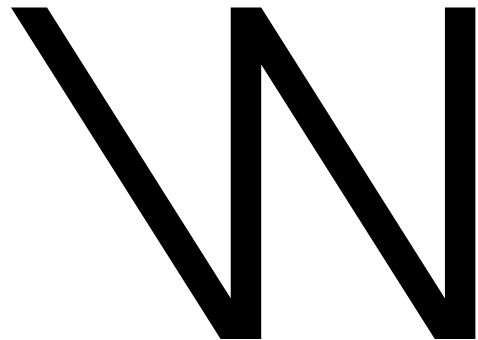
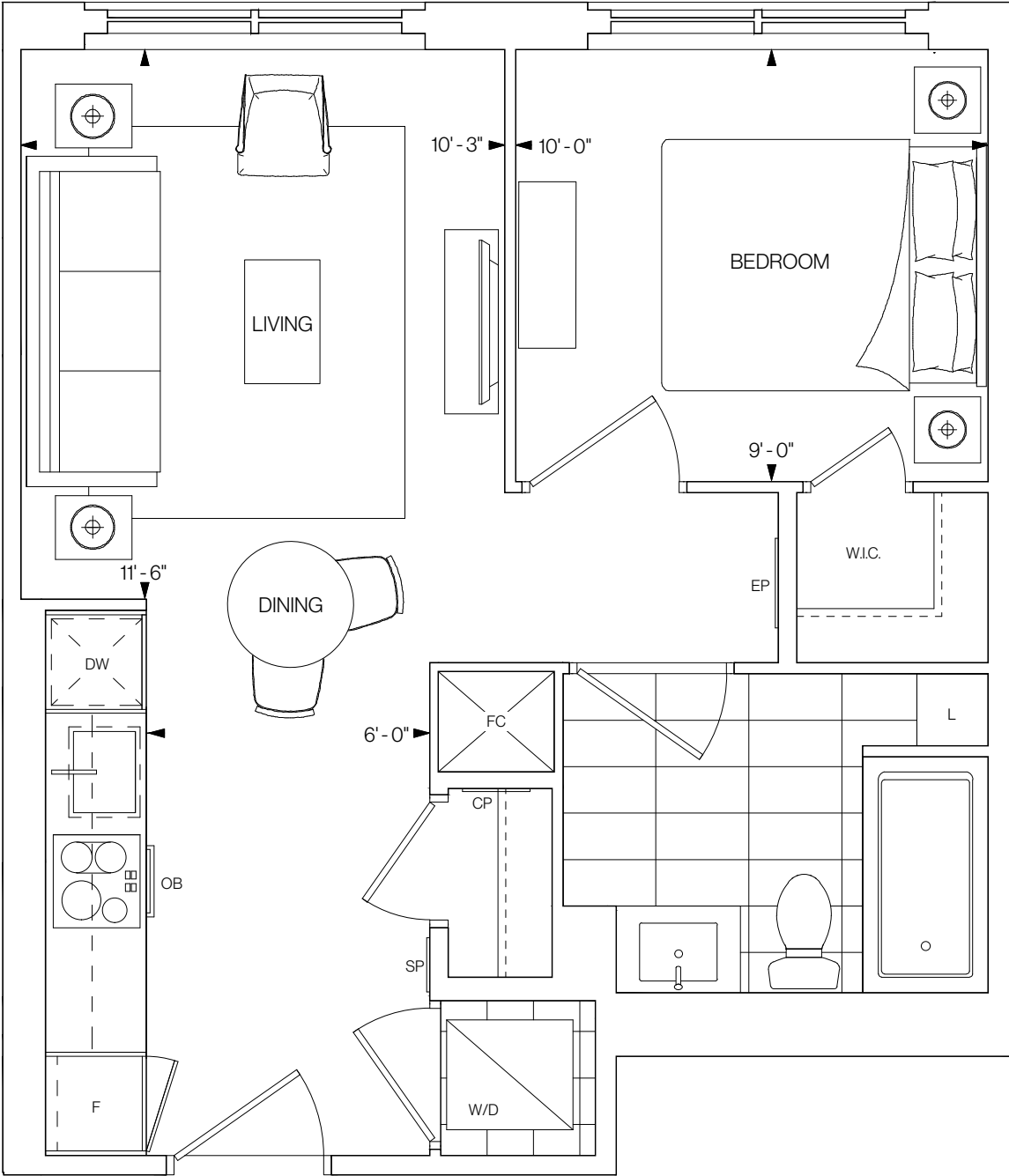
NORTHEAST FACING

FLOOR 6



FLOORS 7-12





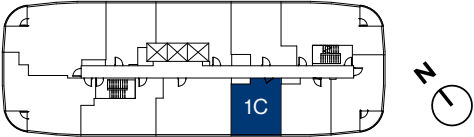
1C

509 SQ.FT.

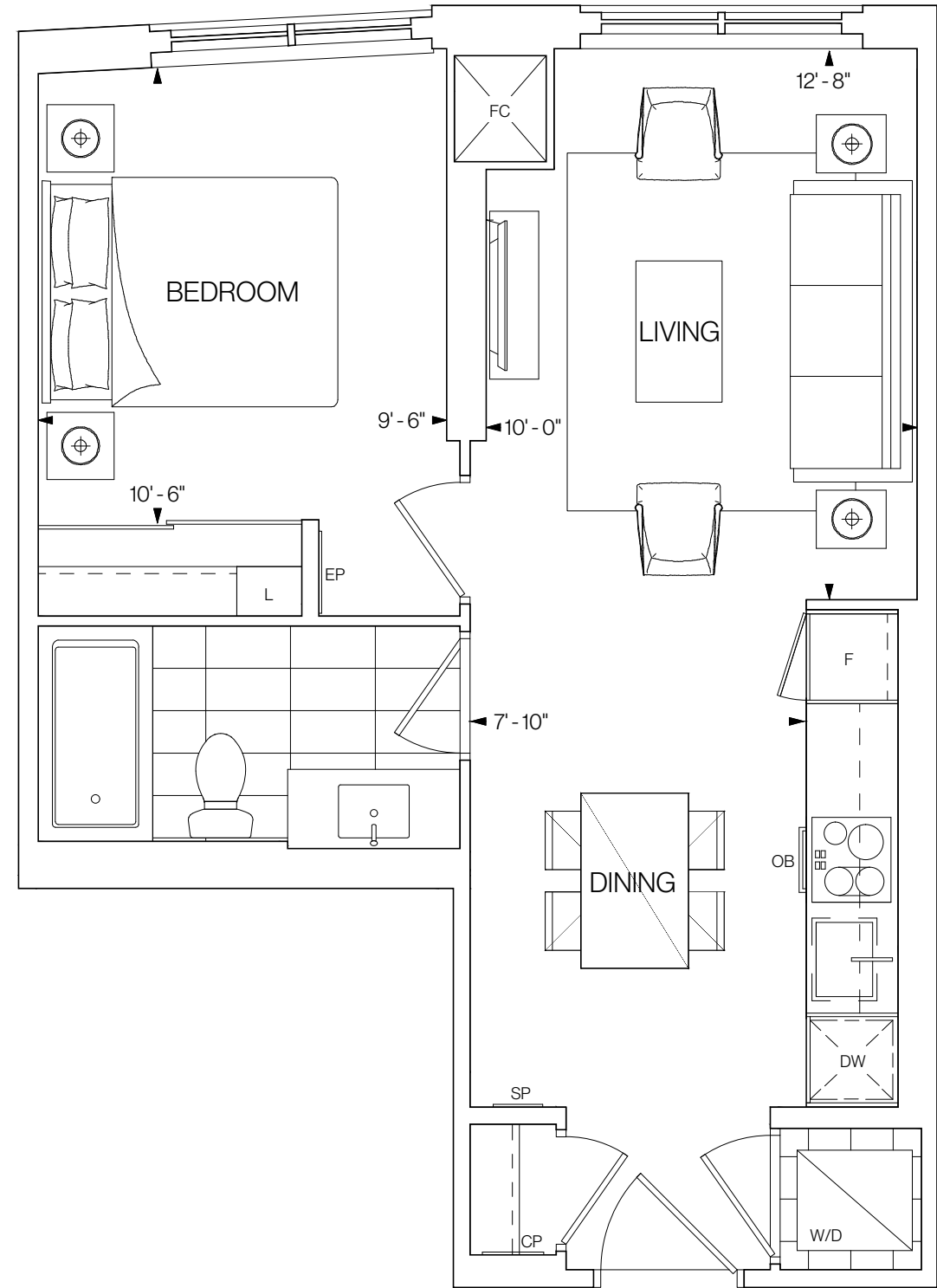
1 BEDROOM 1 BATHROOM

SOUTHWEST FACING

FLOORS 14-20



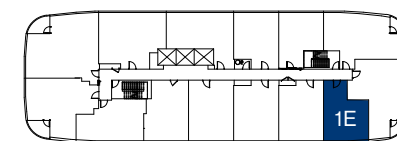
©Tridel 2020. *Tridel, "D" design, Tridel Built for Life and Tridel Built for Life Design are registered Trademarks of Tridel Corporation. Project names and logos are Trademarks of their respective owners. All rights reserved. Buildings and views not to scale. All dimensions are approximate and subject to normal construction variances. Dimensions may exceed the usable floor area. Sizes and specifications subject to change without notice. Actual usable floor space may vary from the stated floor area. Furniture is displayed for illustration purposes only and does not necessarily reflect the electrical plan for the suite. Suites are sold unfurnished. Balcony, terrace and façade variations may apply, contact a sales representative for further details. Illustrations are artist's concept only. Prices and specifications subject to change without notice. E.&O.E. October 2020.



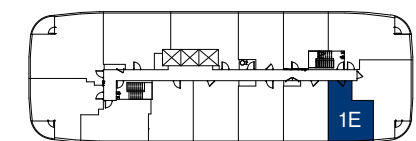
W 1E

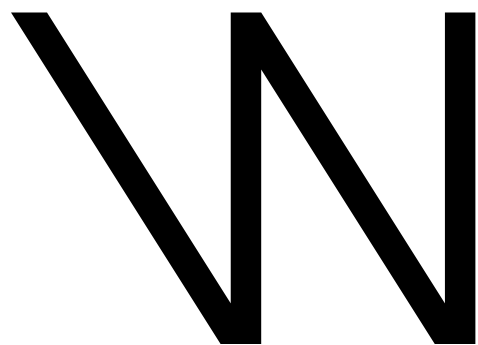
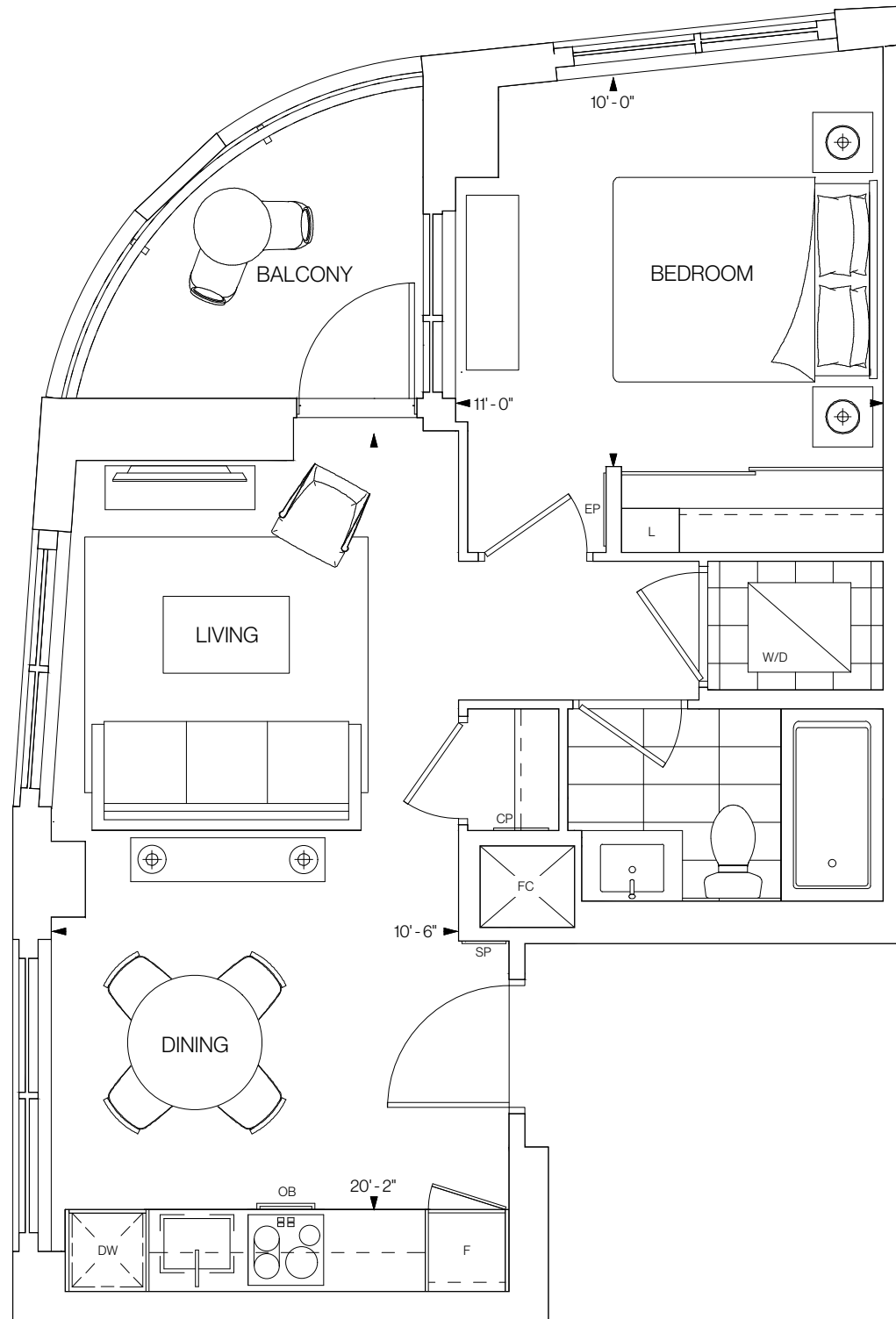
536 SQ.FT.
1 BEDROOM 1 BATHROOM
SOUTHWEST FACING

FLOOR 6



FLOORS 7-12





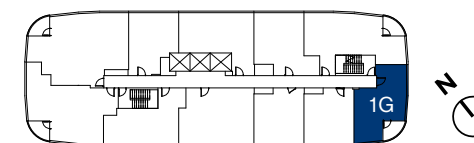
1G

576 SQ.FT.

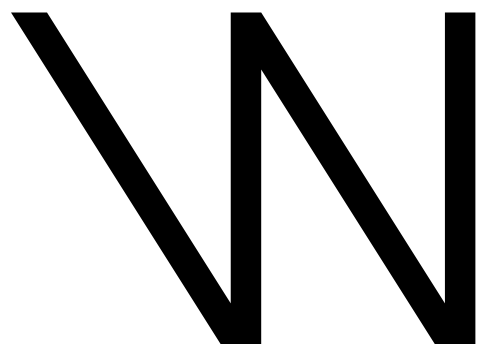
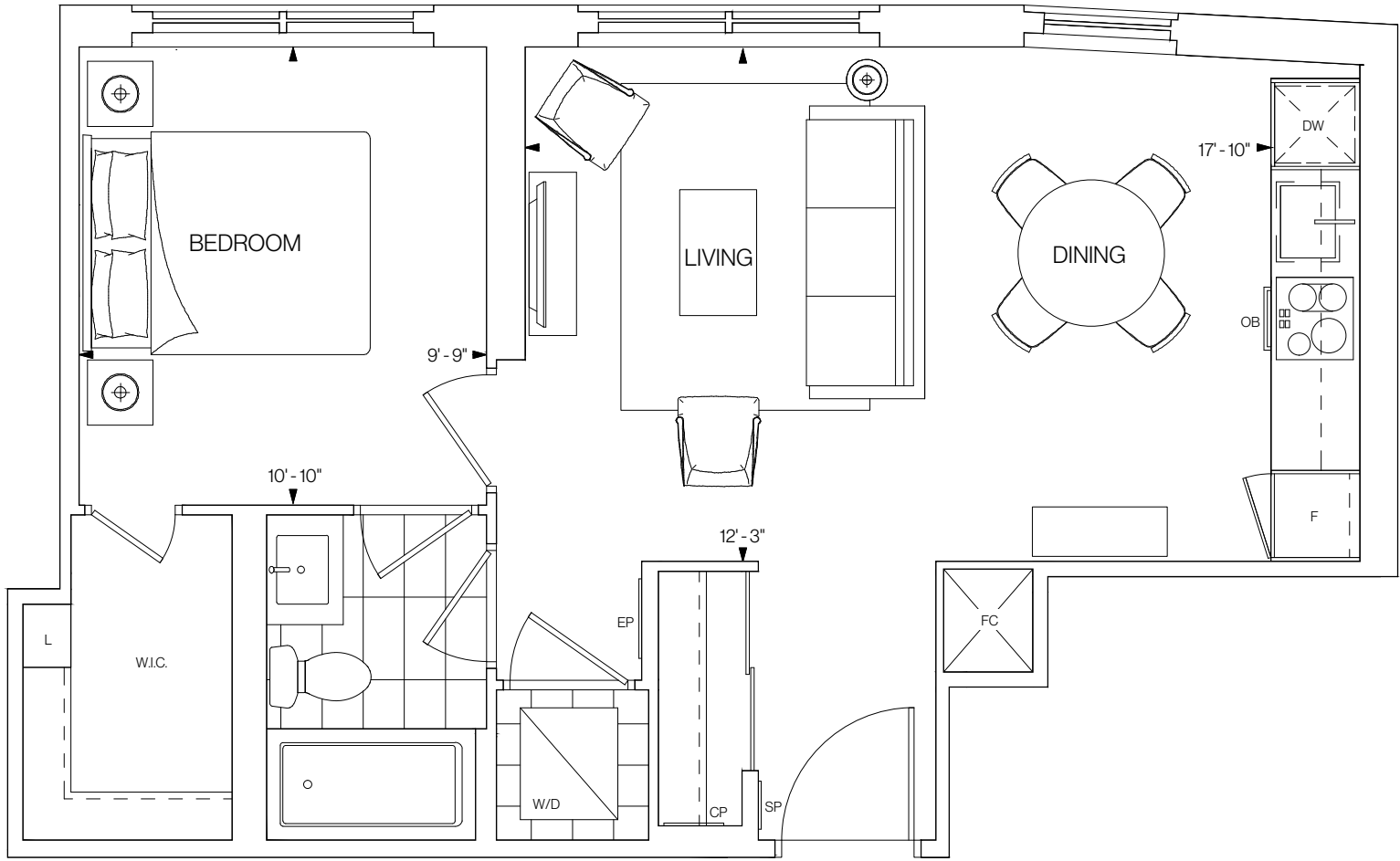
1 BEDROOM 1 BATHROOM

SOUTH FACING

FLOORS 14-20



©Tridel 2020. *Tridel, "D" design, Tridel Built for Life and Tridel Built for Life Design are registered Trademarks of Tridel Corporation. Project names and logos are Trademarks of their respective owners. All rights reserved. Buildings and views not to scale. All dimensions are approximate and subject to normal construction variances. Dimensions may exceed the usable floor area. Sizes and specifications subject to change without notice. Actual usable floor space may vary from the stated floor area. Furniture is displayed for illustration purposes only and does not necessarily reflect the electrical plan for the suite. Suites are sold unfurnished. Balcony, terrace and façade variations may apply, contact a sales representative for further details. Illustrations are artist's concept only. Prices and specifications subject to change without notice. E.&O.E. October 2020.



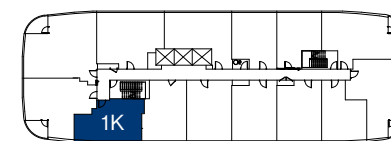
1K

603 SQ.FT.

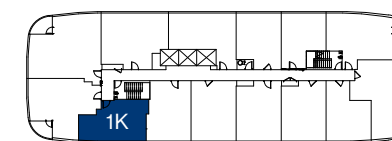
1 BEDROOM 1 BATHROOM

SOUTHWEST FACING

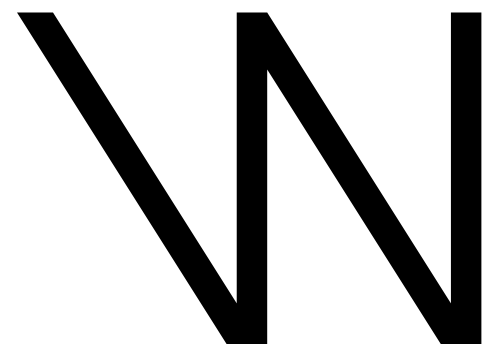
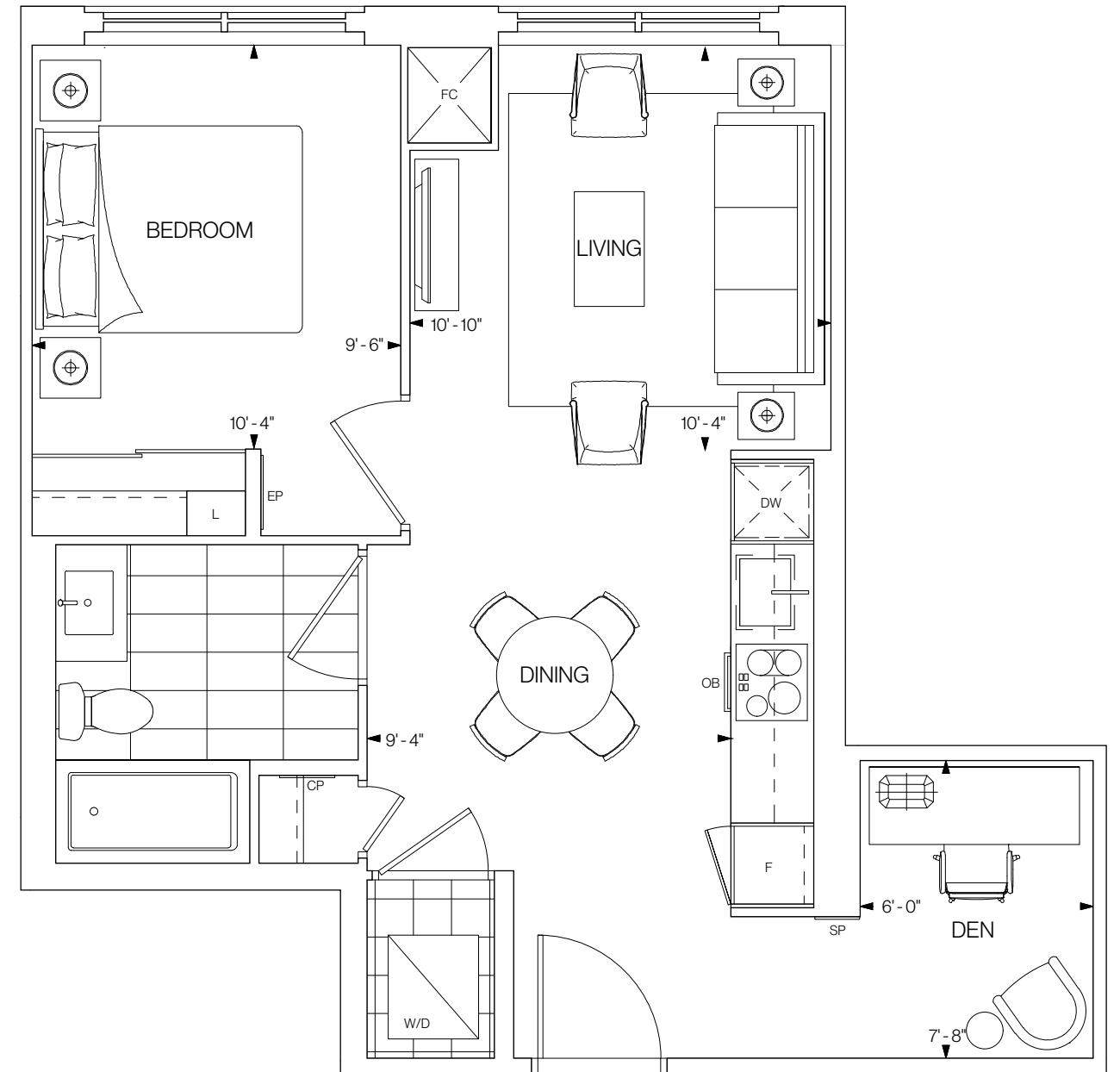
FLOOR 6



FLOORS 7-12



©Tridel 2020. *Tridel, "D" design, Tridel Built for Life and Tridel Built for Life Design are registered Trademarks of Tridel Corporation. Project names and logos are Trademarks of their respective owners. All rights reserved. Buildings and views not to scale. All dimensions are approximate and subject to normal construction variances. Dimensions may exceed the usable floor area. Sizes and specifications subject to change without notice. Actual usable floor space may vary from the stated floor area. Furniture is displayed for illustration purposes only and does not necessarily reflect the electrical plan for the suite. Suites are sold unfurnished. Balcony, terrace and façade variations may apply, contact a sales representative for further details. Illustrations are artist's concept only. Prices and specifications subject to change without notice. E.&O.E. October 2020.



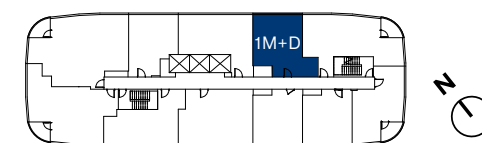
1M+D

604 SQ.FT.

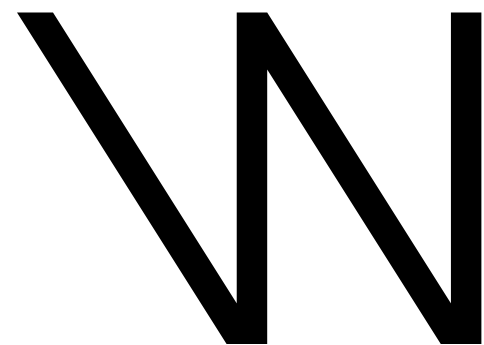
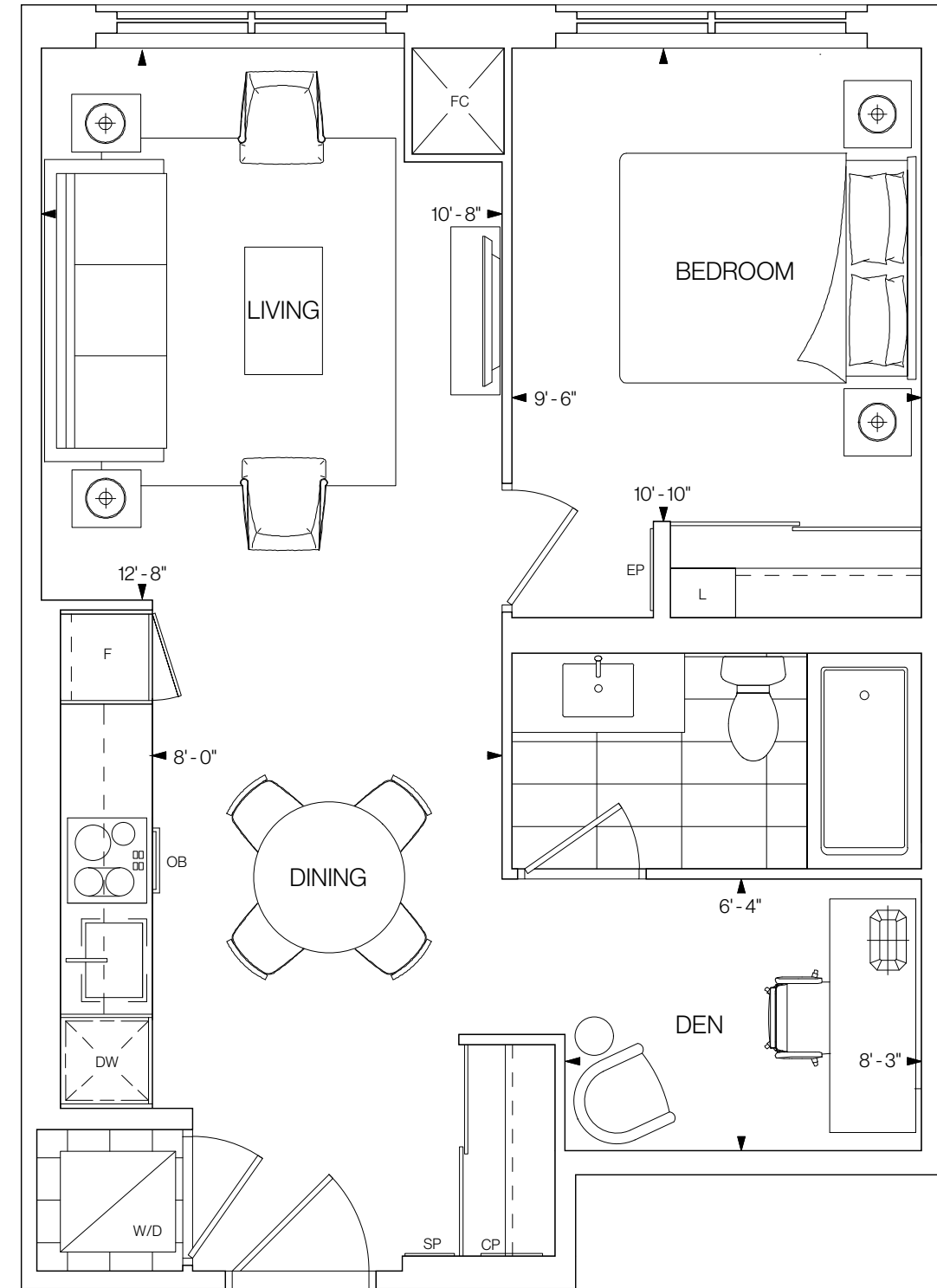
1 BEDROOM+DEN 1 BATHROOM

NORTHEAST FACING

FLOORS 14-20



©Tridel 2020. *Tridel, "D" design, Tridel Built for Life and Tridel Built for Life Design are registered Trademarks of Tridel Corporation. Project names and logos are Trademarks of their respective owners. All rights reserved. Buildings and views not to scale. All dimensions are approximate and subject to normal construction variances. Dimensions may exceed the usable floor area. Sizes and specifications subject to change without notice. Actual usable floor space may vary from the stated floor area. Furniture is displayed for illustration purposes only and does not necessarily reflect the electrical plan for the suite. Suites are sold unfurnished. Balcony, terrace and façade variations may apply, contact a sales representative for further details. Illustrations are artist's concept only. Prices and specifications subject to change without notice. E.&O.E. October 2020.



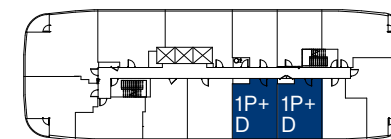
1P+D

614 SQ.FT.

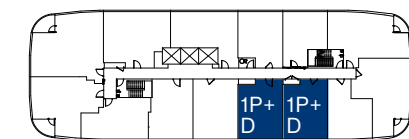
1 BEDROOM+DEN 1 BATHROOM

SOUTHWEST FACING

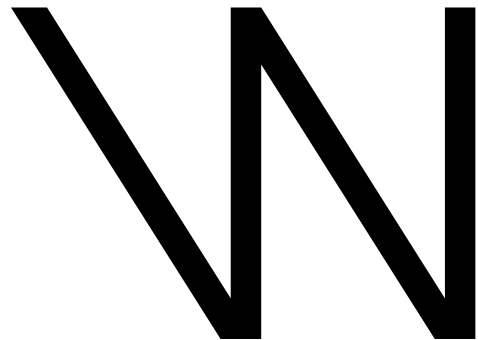
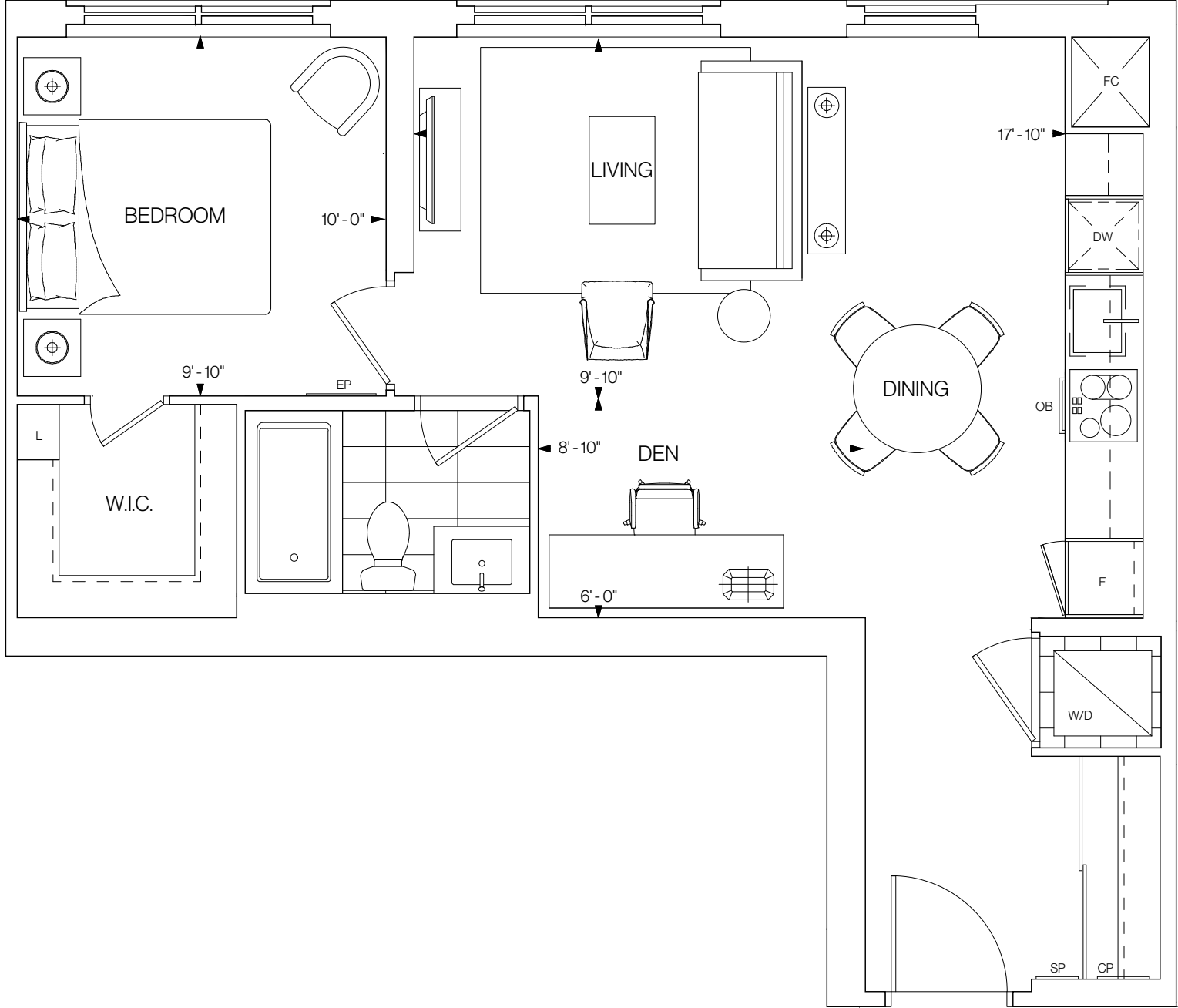
FLOOR 6



FLOORS 7-12



©Tridel 2020. *Tridel, "D" design, Tridel Built for Life and Tridel Built for Life Design are registered Trademarks of Tridel Corporation. Project names and logos are Trademarks of their respective owners. All rights reserved. Buildings and views not to scale. All dimensions are approximate and subject to normal construction variances. Dimensions may exceed the usable floor area. Sizes and specifications subject to change without notice. Actual usable floor space may vary from the stated floor area. Furniture is displayed for illustration purposes only and does not necessarily reflect the electrical plan for the suite. Suites are sold unfurnished. Balcony, terrace and façade variations may apply, contact a sales representative for further details. Illustrations are artist's concept only. Prices and specifications subject to change without notice. E.&O.E. October 2020.



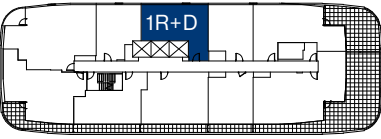
1R+D

665 SQ.FT.

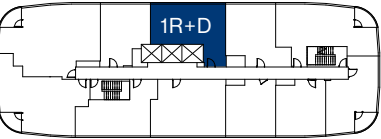
1 BEDROOM+DEN 1 BATHROOM

NORTHEAST FACING

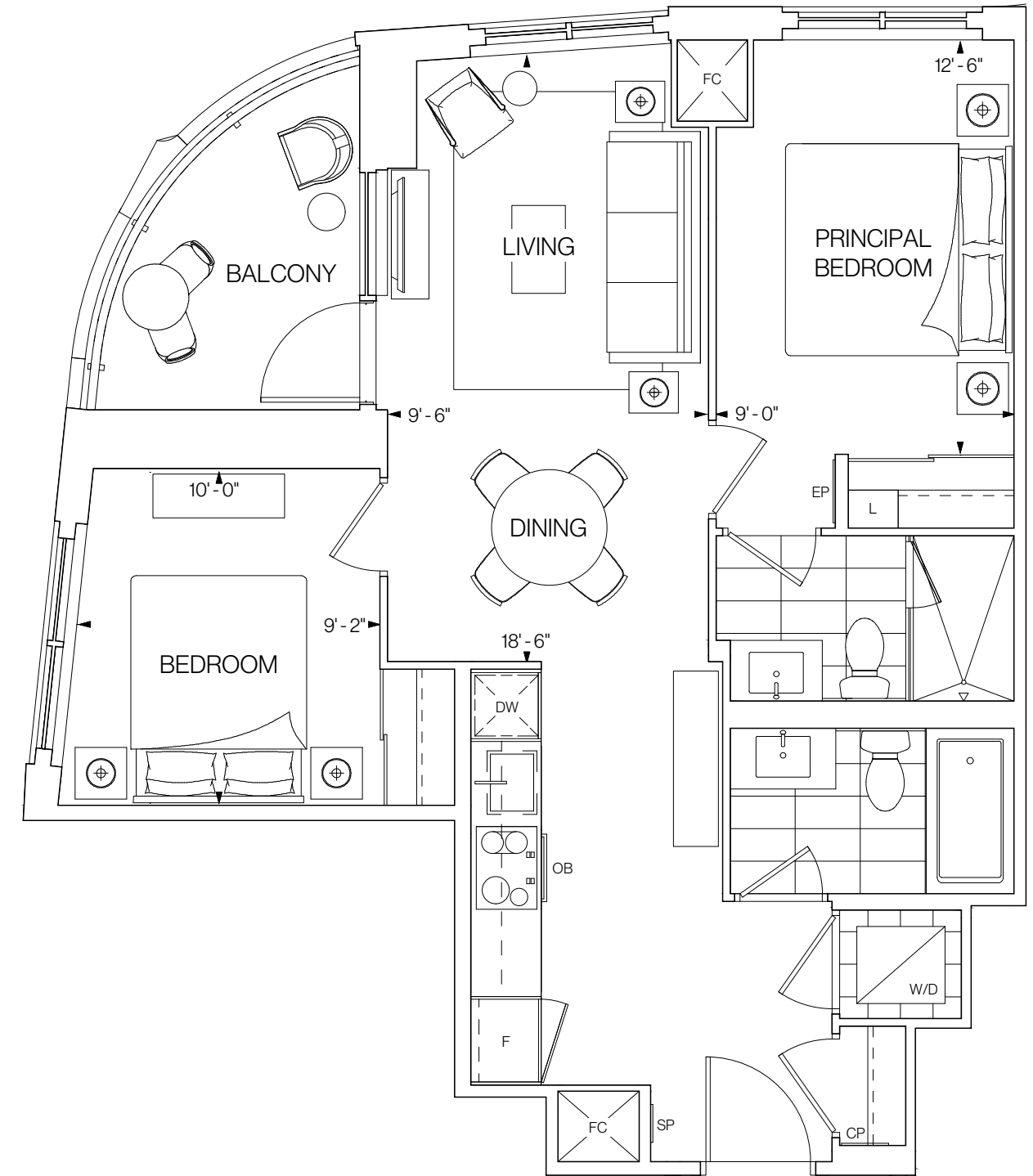
FLOOR 13



FLOORS 14-20



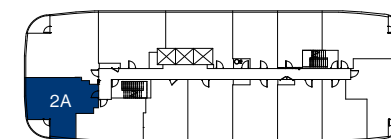
©Tridel 2020. *Tridel, "D" design, Tridel Built for Life and Tridel Built for Life Design are registered Trademarks of Tridel Corporation. Project names and logos are Trademarks of their respective owners. All rights reserved. Buildings and views not to scale. All dimensions are approximate and subject to normal construction variances. Dimensions may exceed the usable floor area. Sizes and specifications subject to change without notice. Actual usable floor space may vary from the stated floor area. Furniture is displayed for illustration purposes only and does not necessarily reflect the electrical plan for the suite. Suites are sold unfurnished. Balcony, terrace and façade variations may apply, contact a sales representative for further details. Illustrations are artist's concept only. Prices and specifications subject to change without notice. E.&O.E. October 2020.



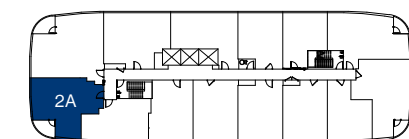
W 2A

769 SQ.FT.
2 BEDROOMS 2 BATHROOMS
WEST FACING

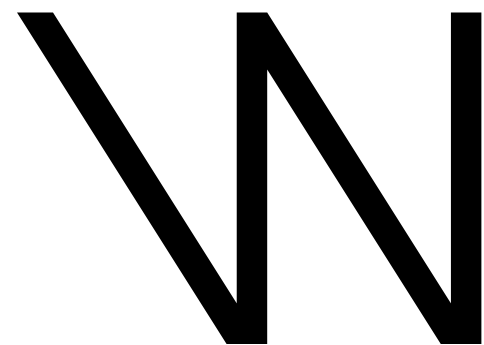
FLOOR 6



FLOORS 7-12



©Tridel 2020. *Tridel, "D" design, Tridel Built for Life and Tridel Built for Life Design are registered Trademarks of Tridel Corporation. Project names and logos are Trademarks of their respective owners. All rights reserved. Buildings and views not to scale. All dimensions are approximate and subject to normal construction variances. Dimensions may exceed the usable floor area. Sizes and specifications subject to change without notice. Actual usable floor space may vary from the stated floor area. Furniture is displayed for illustration purposes only and does not necessarily reflect the electrical plan for the suite. Suites are sold unfurnished. Balcony, terrace and façade variations may apply, contact a sales representative for further details. Illustrations are artist's concept only. Prices and specifications subject to change without notice. E.&O.E. October 2020.

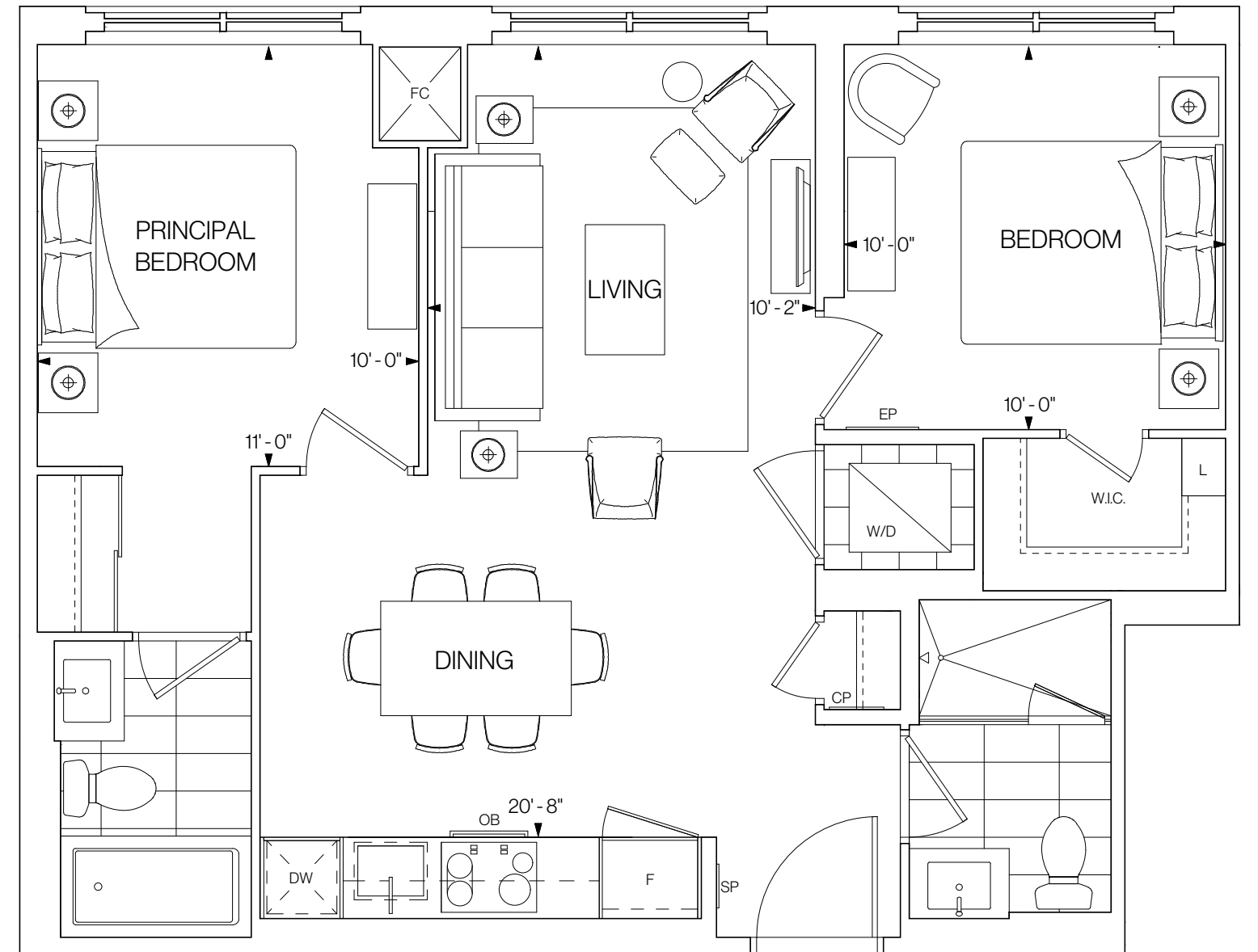


2B

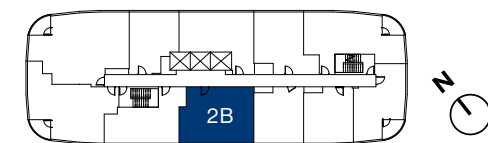
769 SQ.FT.

2 BEDROOMS 2 BATHROOMS

SOUTHWEST FACING



FLOORS 14-20

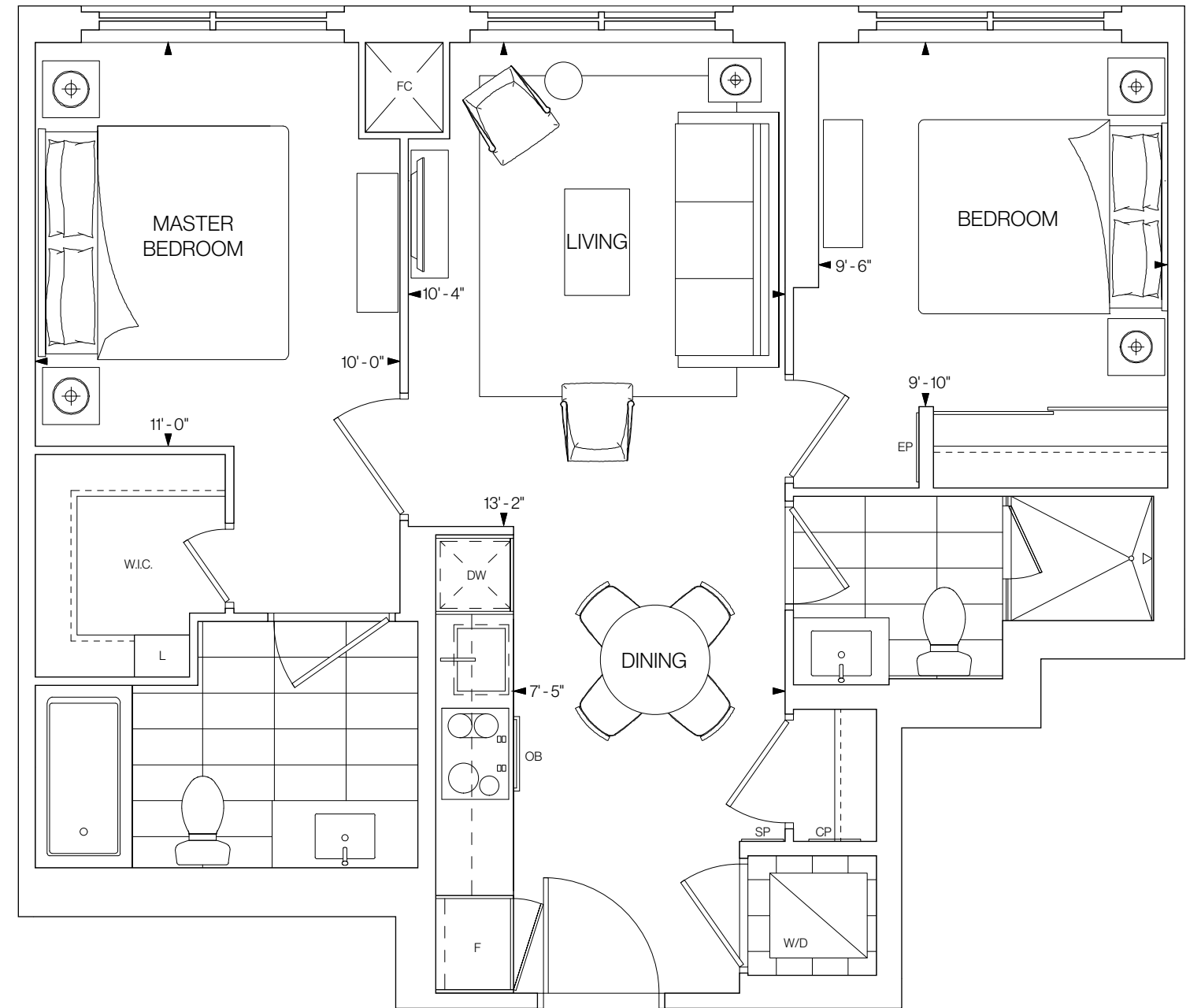


W 2C

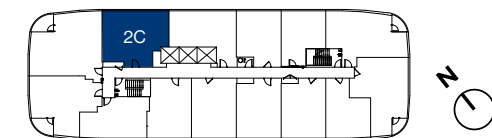
786 SQ.FT.

2 BEDROOMS 2 BATHROOMS

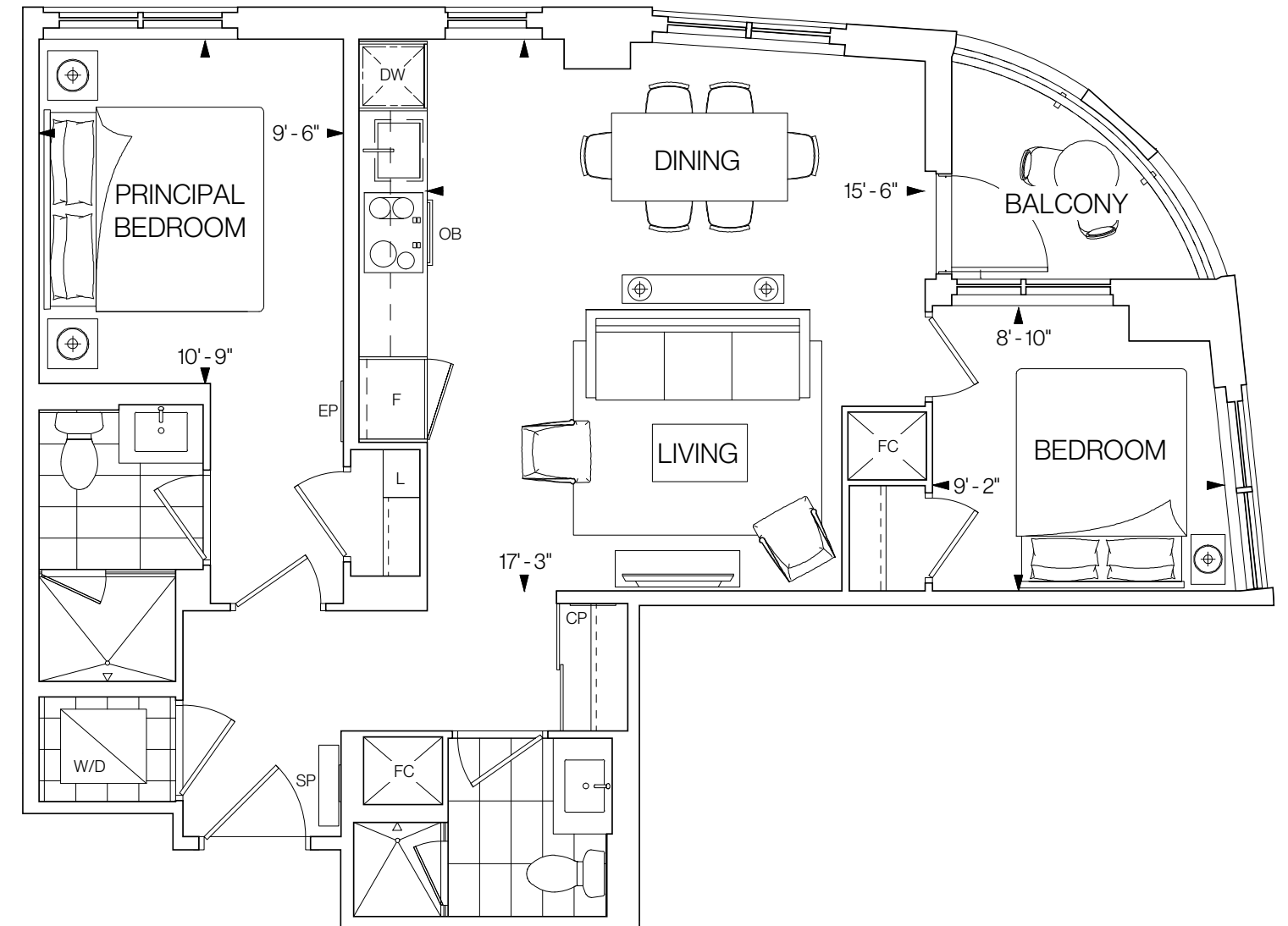
NORTHEAST FACING



FLOORS 7-12



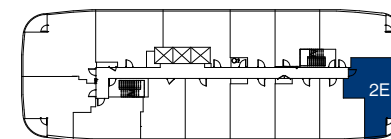
©Tridel 2020. *Tridel, "D" design, Tridel Built for Life and Tridel Built for Life Design are registered Trademarks of Tridel Corporation. Project names and logos are Trademarks of their respective owners. All rights reserved. Buildings and views not to scale. All dimensions are approximate and subject to normal construction variances. Dimensions may exceed the usable floor area. Sizes and specifications subject to change without notice. Actual usable floor space may vary from the stated floor area. Furniture is displayed for illustration purposes only and does not necessarily reflect the electrical plan for the suite. Suites are sold unfurnished. Balcony, terrace and façade variations may apply, contact a sales representative for further details. Illustrations are artist's concept only. Prices and specifications subject to change without notice. E.&O.E. October 2020.



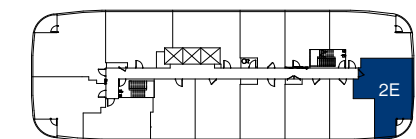
W 2E

800 SQ.FT.
2 BEDROOMS 2 BATHROOMS
SOUTH FACING

FLOOR 6

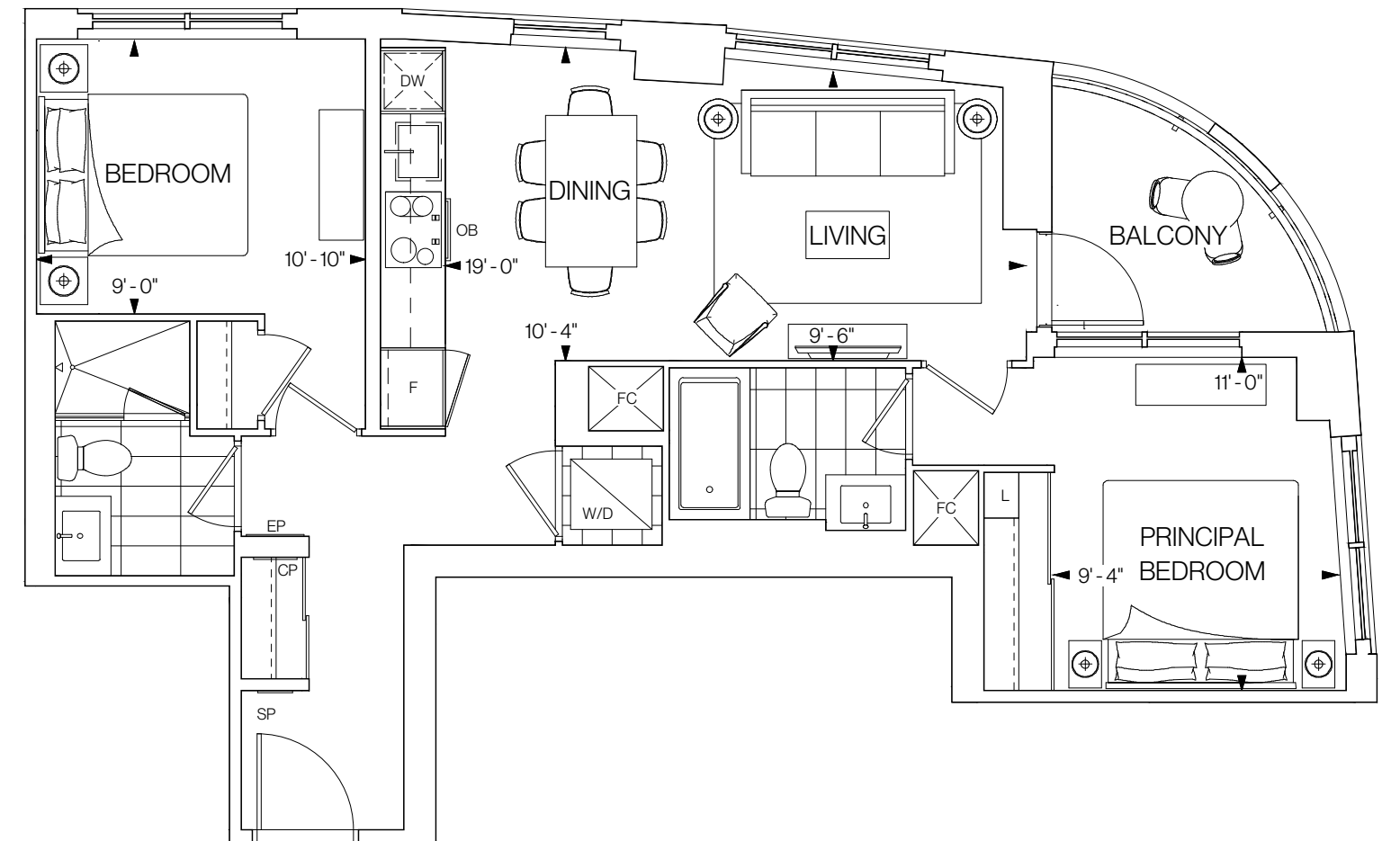


FLOORS 7-12

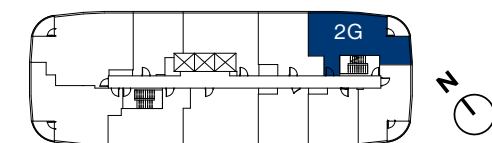


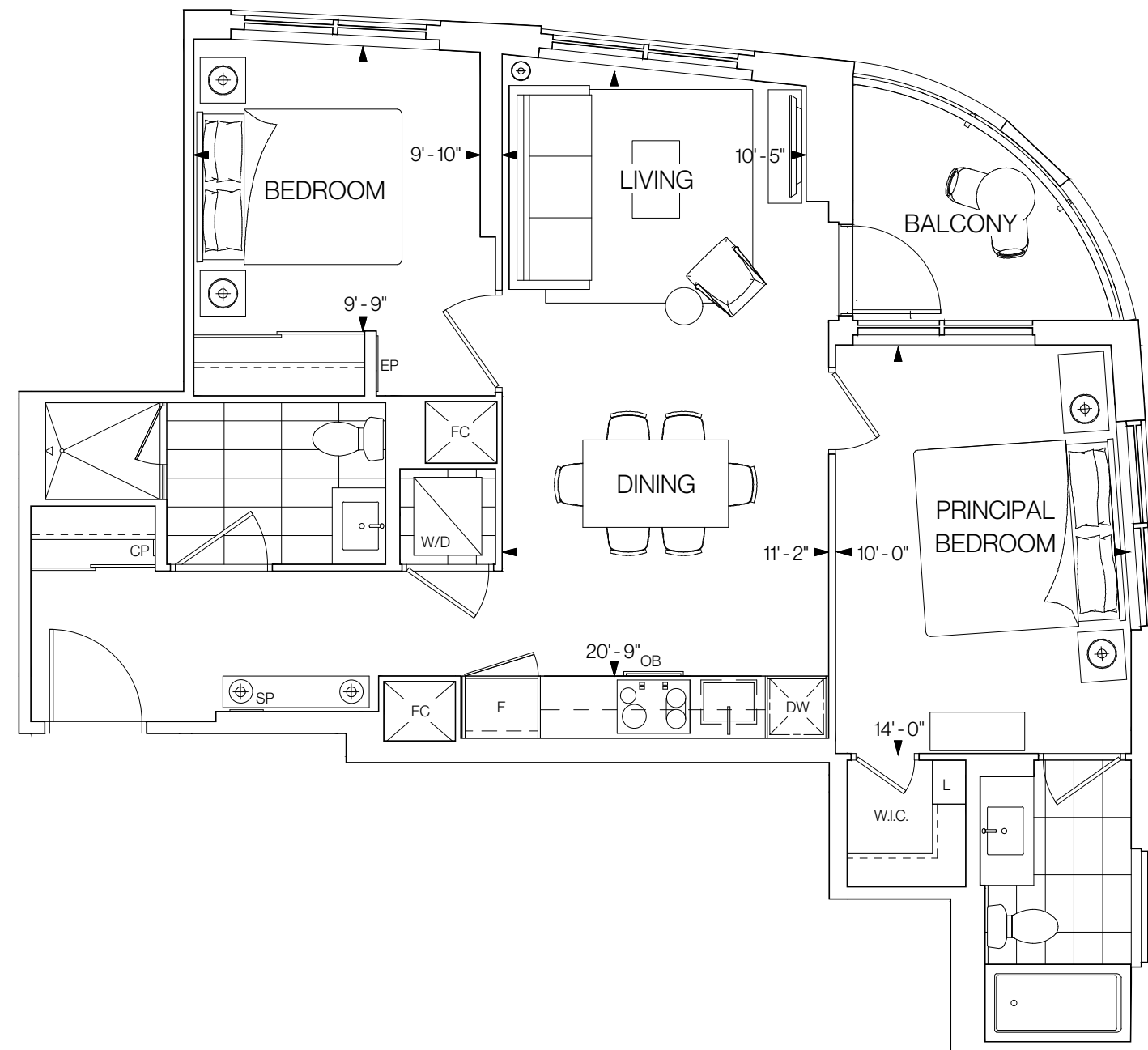
W 2G

818 SQ.FT.
2 BEDROOMS 2 BATHROOMS
EAST FACING



FLOORS 14-20





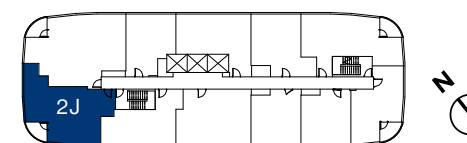
W 2J

889 SQ.FT.

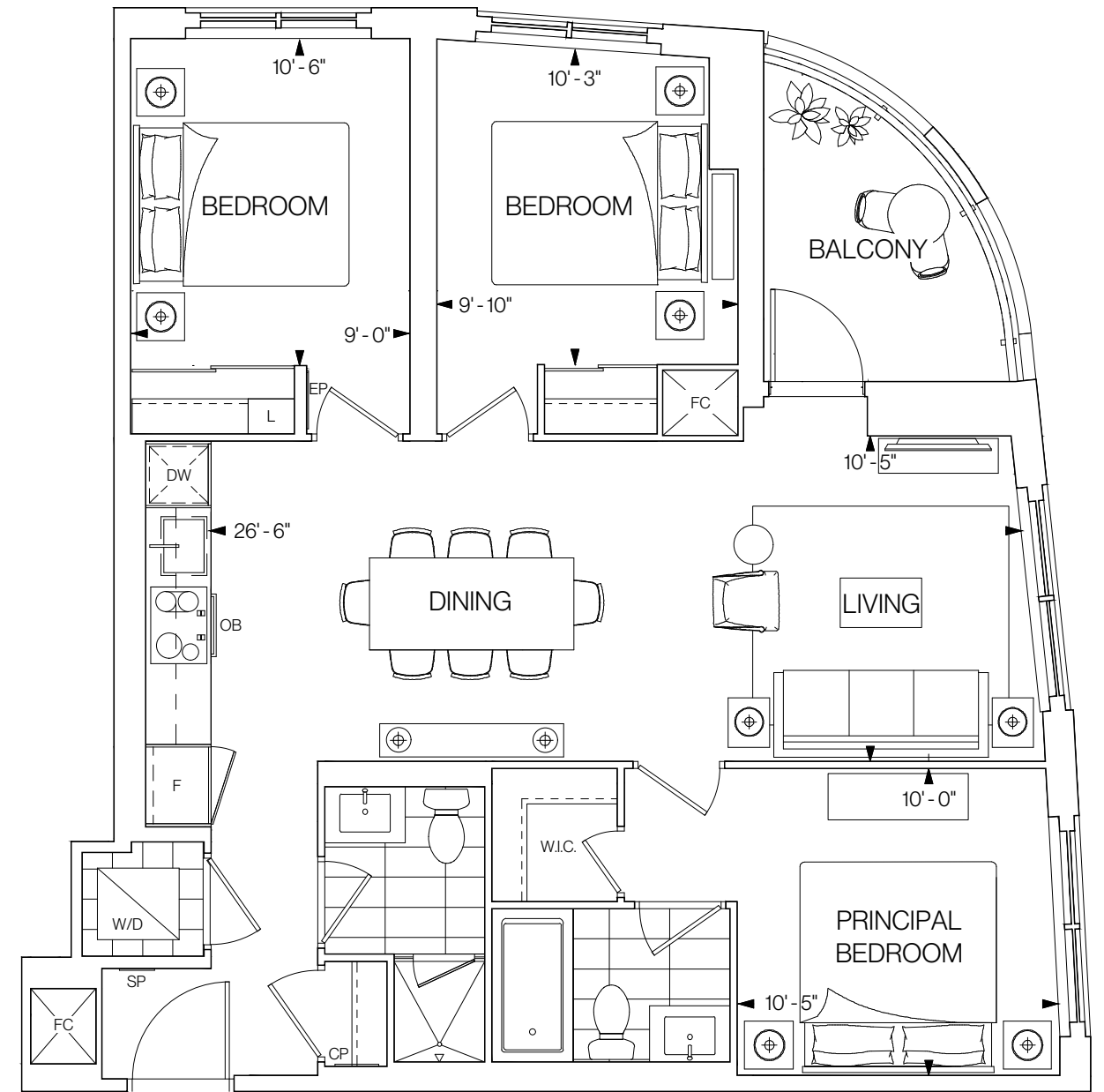
2 BEDROOMS 2 BATHROOMS

WEST FACING

FLOORS 14-20



©Tridel 2020. *Tridel, "D" design, Tridel Built for Life and Tridel Built for Life Design are registered Trademarks of Tridel Corporation. Project names and logos are Trademarks of their respective owners. All rights reserved. Buildings and views not to scale. All dimensions are approximate and subject to normal construction variances. Dimensions may exceed the usable floor area. Sizes and specifications subject to change without notice. Actual usable floor space may vary from the stated floor area. Furniture is displayed for illustration purposes only and does not necessarily reflect the electrical plan for the suite. Suites are sold unfurnished. Balcony, terrace and façade variations may apply, contact a sales representative for further details. Illustrations are artist's concept only. Prices and specifications subject to change without notice. E.&O.E. October 2020.



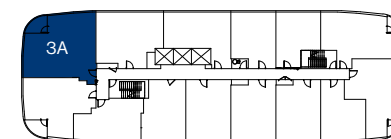
N 3A

987 SQ.FT.

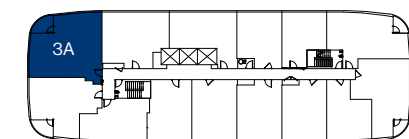
3 BEDROOMS 2 BATHROOMS

NORTH FACING

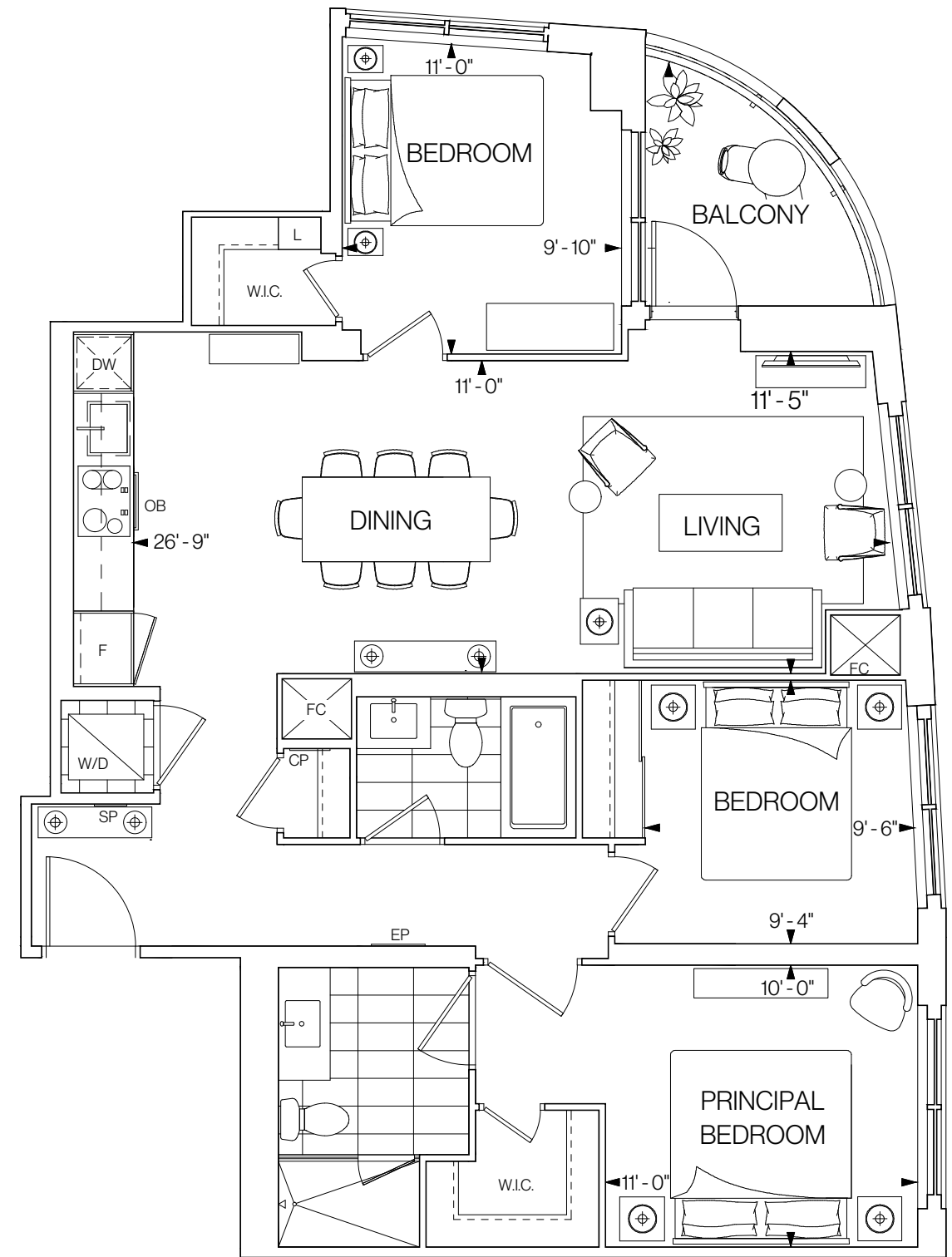
FLOOR 6



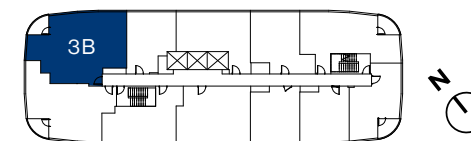
FLOORS 7-12



©Tridel 2020. *Tridel, "D" design, Tridel Built for Life and Tridel Built for Life Design are registered Trademarks of Tridel Corporation. Project names and logos are Trademarks of their respective owners. All rights reserved. Buildings and views not to scale. All dimensions are approximate and subject to normal construction variances. Dimensions may exceed the usable floor area. Sizes and specifications subject to change without notice. Actual usable floor space may vary from the stated floor area. Furniture is displayed for illustration purposes only and does not necessarily reflect the electrical plan for the suite. Suites are sold unfurnished. Balcony, terrace and façade variations may apply, contact a sales representative for further details. Illustrations are artist's concept only. Prices and specifications subject to change without notice. E.&O.E. October 2020.



FLOORS 14-20



3B

1,118 SQ.FT.

3 BEDROOMS 2 BATHROOMS

NORTH FACING

FEATURES & FINISHES



Contemporary materials evoke a sense of elegance in your home at Westerly. Chrome fixtures, granite or quartz countertops and laminate cabinetry create an environment of comfort and modern luxury.

In the kitchen, energy-efficient appliances provide a chic, seamless cooking experience. While in the bathroom, a frameless glass shower or soaker tub instill a feeling of peace and relaxation.

Smart technology keeps you connected to your home, with digital entry, smartphone access to common areas, electronic parcel lockers, and wall pads in every suite that control heating and cooling systems, while keeping you connected with the concierge.

THE LOBBY™

DESIGN STUDIO

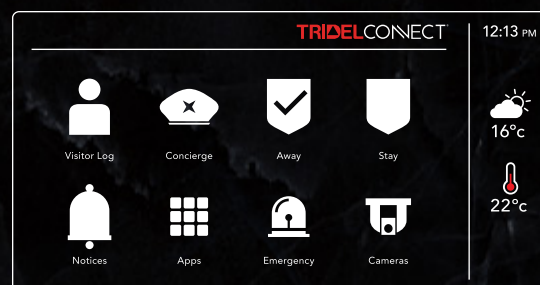
Step into The Lobby. Tridel's new Design Studio. Conceived exclusively for you to envision and personalize the home of your dreams. Experience each feature and finish in person, expertly selected by our award-winning design team. Our talented design consultants help guide the choices that will make your home distinctly yours. Exactly as you always imagined it.





TRIDELCONNECT®

Innovative Smart Home Technology.



Tidel Connect® makes everyday living simpler. From convenient features such as hands-free entry, automated parcel delivery and smartphone access to your home, we're bringing it all together for a better living experience. Creating homes built for the innovations of today and prepared for those of tomorrow.



CONTROL YOUR HOME, FROM ANYWHERE.

See who's at your door, adjust the temperature in your home, call the front desk, set the alarm, check the weather, and get building updates – all from your in-suite wall pad or the smartphone app. It's that easy.

ENTERING YOUR SUITE.

Your home's digital door lock is unlocked with a distinct access code. Create up to four personalized access codes for family members and loved ones to come and go freely.



LICENCE PLATE ID.

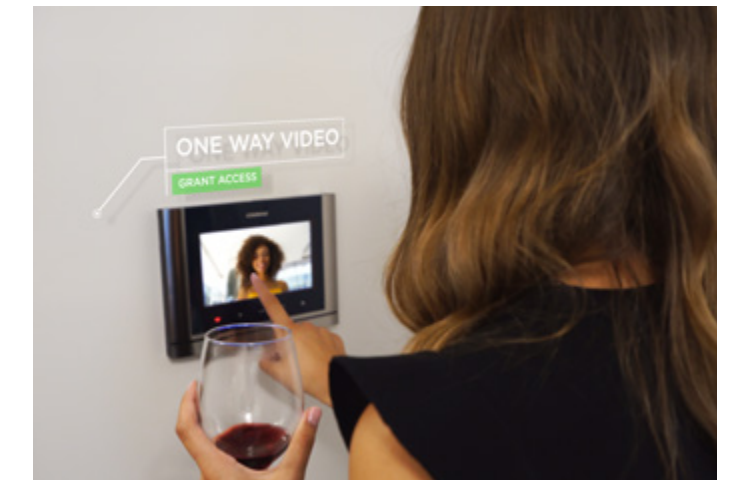
Arrive home by car like a VIP. With licence plate recognition, there's no need to fumble for your fob or reach your hand outside – your vehicle is recognized and you're granted entry to the building automatically.

MOVE THROUGH THE BUILDING WITH EASE.

As a resident, your smartphone will be your access pass to the building, allowing you to unlock the doors to the private common areas and amenity spaces as you approach.

LIGHTNING-FAST INTERNET.

Stay connected with unlimited, ultra high-speed internet in your suite, and in the lobby and common areas. This amenity is conveniently bundled along with your utilities in your maintenance fees.



LETTING GUESTS IN.

Expecting company? Let Tidel Connect® show you who is calling with live, one-way video from the lobby or parking garage. Answer their call and grant your guest access with a tap on your wall pad or your phone.

PEACE OF MIND AT HOME.

Arm the alarm from your wall pad or smartphone, or select the "stay" function, allowing you to set the alarm while remaining at home. If activated, both you and the front desk will be notified.



PARCEL DELIVERY LOCKERS.

Enjoy 24/7 direct access to your parcels, moments after they are delivered, with a private and sophisticated parcel delivery locker system. You'll receive a digital notification that your package is ready and waiting to be picked up.

TRIDEL BUILT GREEN BUILT FOR LIFE.®

As the largest builder of sustainable condominiums in Canada, Tridel takes leadership and responsibility seriously. That's why we are committed to building communities that are environmentally responsible, energy efficient and healthy places to live.

Tridel has helped change the way people think about environmentally friendly living by constantly innovating and creating high-design/sustainable suites as proof of concept and then scaling to communities that interplay with the environment in which they inhabit.

Tridel is proud to be an 11 time recipient of the Green Builder of the Year award by the Building Industry Land Development (BILD).

IMPROVING INDOOR ENVIRONMENTS

TRIDEL IS TAKING A NUMBER OF MEASURES TO ENSURE
A HIGH LEVEL OF INDOOR AIR QUALITY AT WESTERLY.

- Our **Energy Recovery Ventilation (ERV) system** draws clean, fresh air into each suite and removes stale air.
- For the common areas, we are installing **RGF Halo-LED In-Duct air purifiers**, which reduce airborne and surface contaminants and pollutants.
- We are also installing **wave technology** to open doors, and touchless fixtures in the common areas.

