

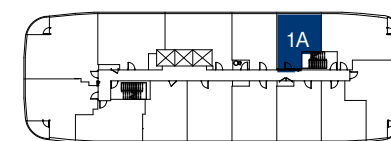
**1A**

**502 SQ.FT.**

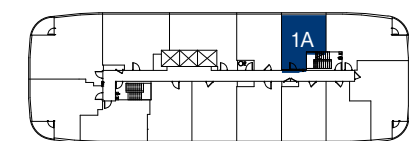
**1 BEDROOM 1 BATHROOM**

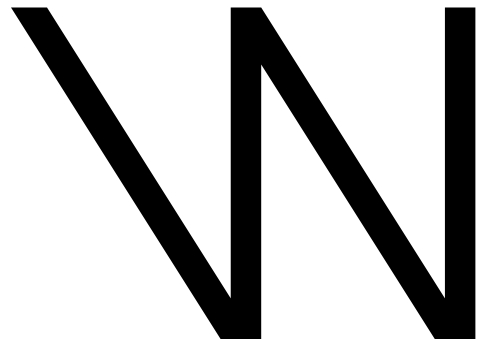
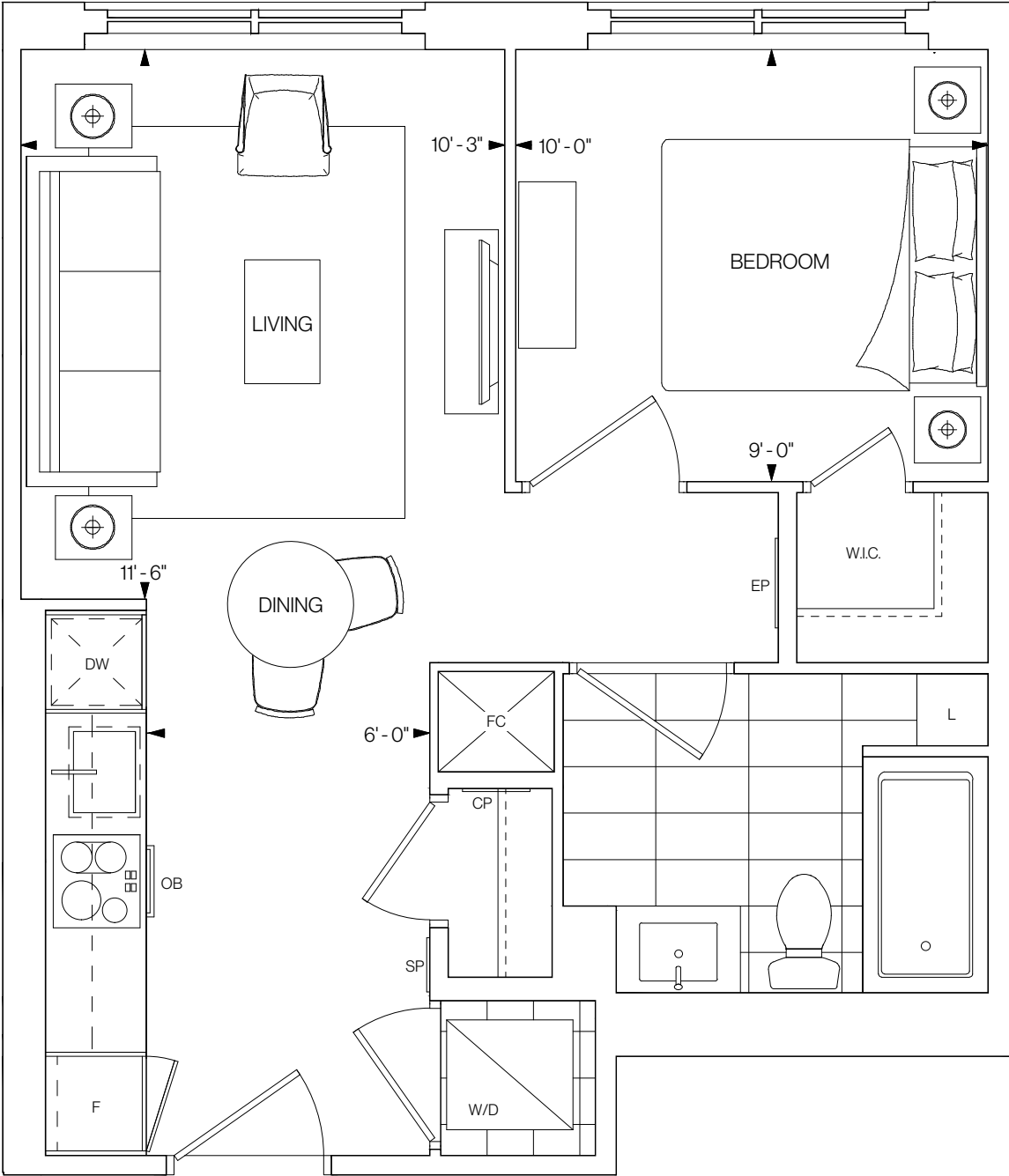
**NORTHEAST FACING**

FLOOR 6



FLOORS 7-12





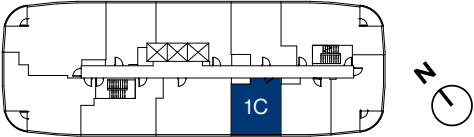
1C

509 SQ.FT.

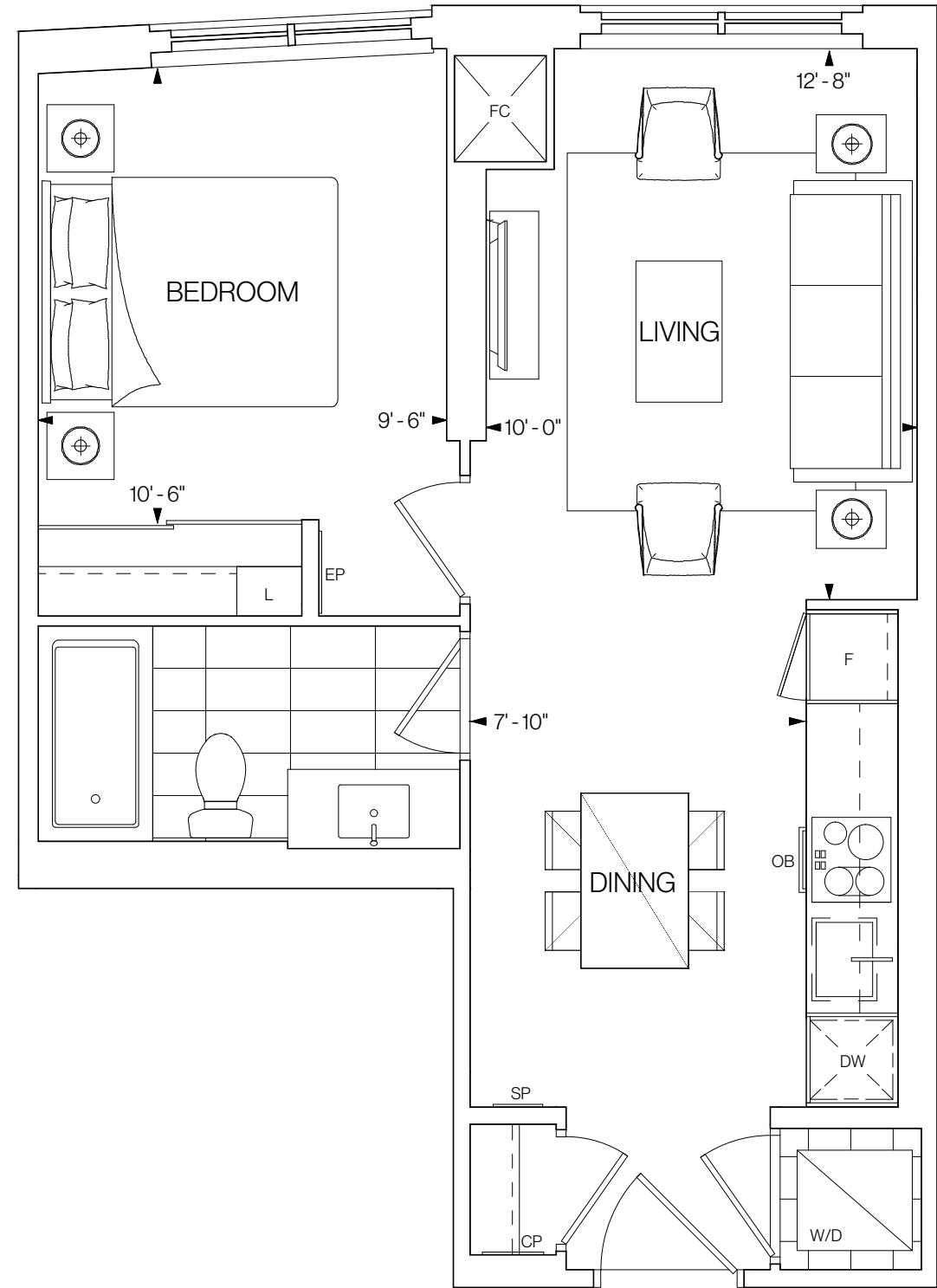
1 BEDROOM 1 BATHROOM

SOUTHWEST FACING

FLOORS 14-20



©Tridel 2020. \*Tridel, "D" design, Tridel Built for Life and Tridel Built for Life Design are registered Trademarks of Tridel Corporation. Project names and logos are Trademarks of their respective owners. All rights reserved. Buildings and views not to scale. All dimensions are approximate and subject to normal construction variances. Dimensions may exceed the usable floor area. Sizes and specifications subject to change without notice. Actual usable floor space may vary from the stated floor area. Furniture is displayed for illustration purposes only and does not necessarily reflect the electrical plan for the suite. Suites are sold unfurnished. Balcony, terrace and façade variations may apply, contact a sales representative for further details. Illustrations are artist's concept only. Prices and specifications subject to change without notice. E.&O.E. October 2020.



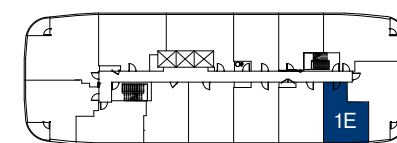
1E

536 SQ.FT.

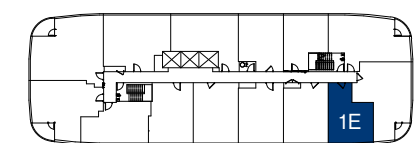
1 BEDROOM 1 BATHROOM

SOUTHWEST FACING

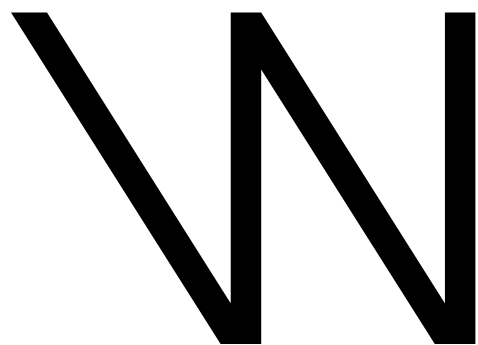
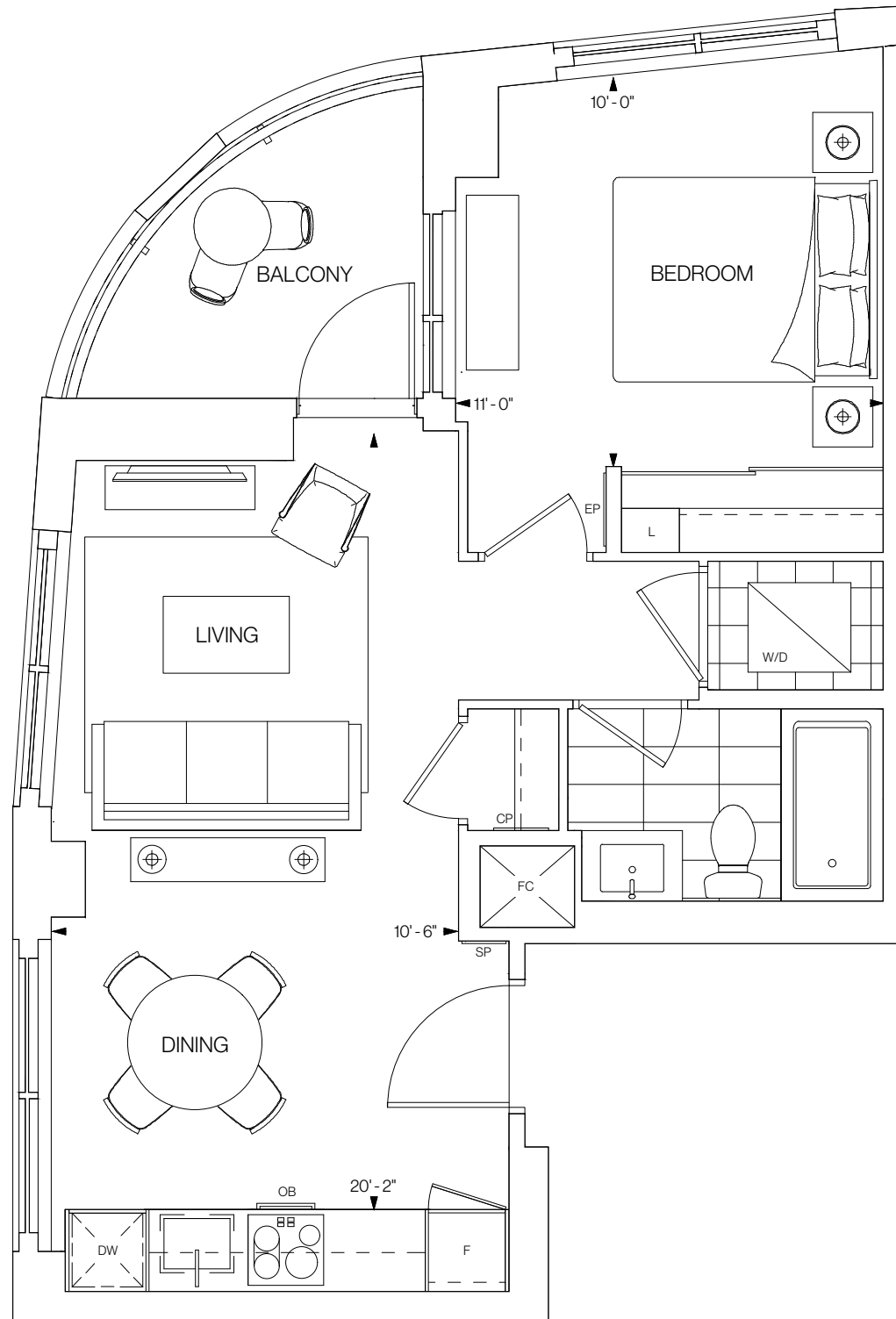
FLOOR 6



FLOORS 7-12



©Tridel 2020. \*Tridel, "D" design, Tridel Built for Life and Tridel Built for Life Design are registered Trademarks of Tridel Corporation. Project names and logos are Trademarks of their respective owners. All rights reserved. Buildings and views not to scale. All dimensions are approximate and subject to normal construction variances. Dimensions may exceed the usable floor area. Sizes and specifications subject to change without notice. Actual usable floor space may vary from the stated floor area. Furniture is displayed for illustration purposes only and does not necessarily reflect the electrical plan for the suite. Suites are sold unfurnished. Balcony, terrace and façade variations may apply, contact a sales representative for further details. Illustrations are artist's concept only. Prices and specifications subject to change without notice. E.&O.E. October 2020.



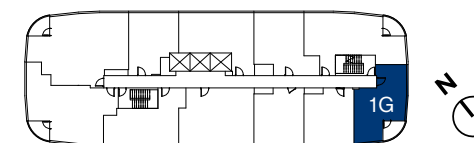
**1G**

**576 SQ.FT.**

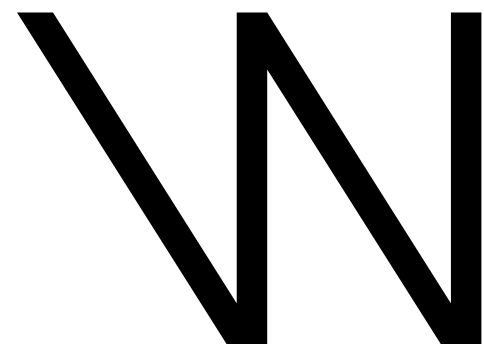
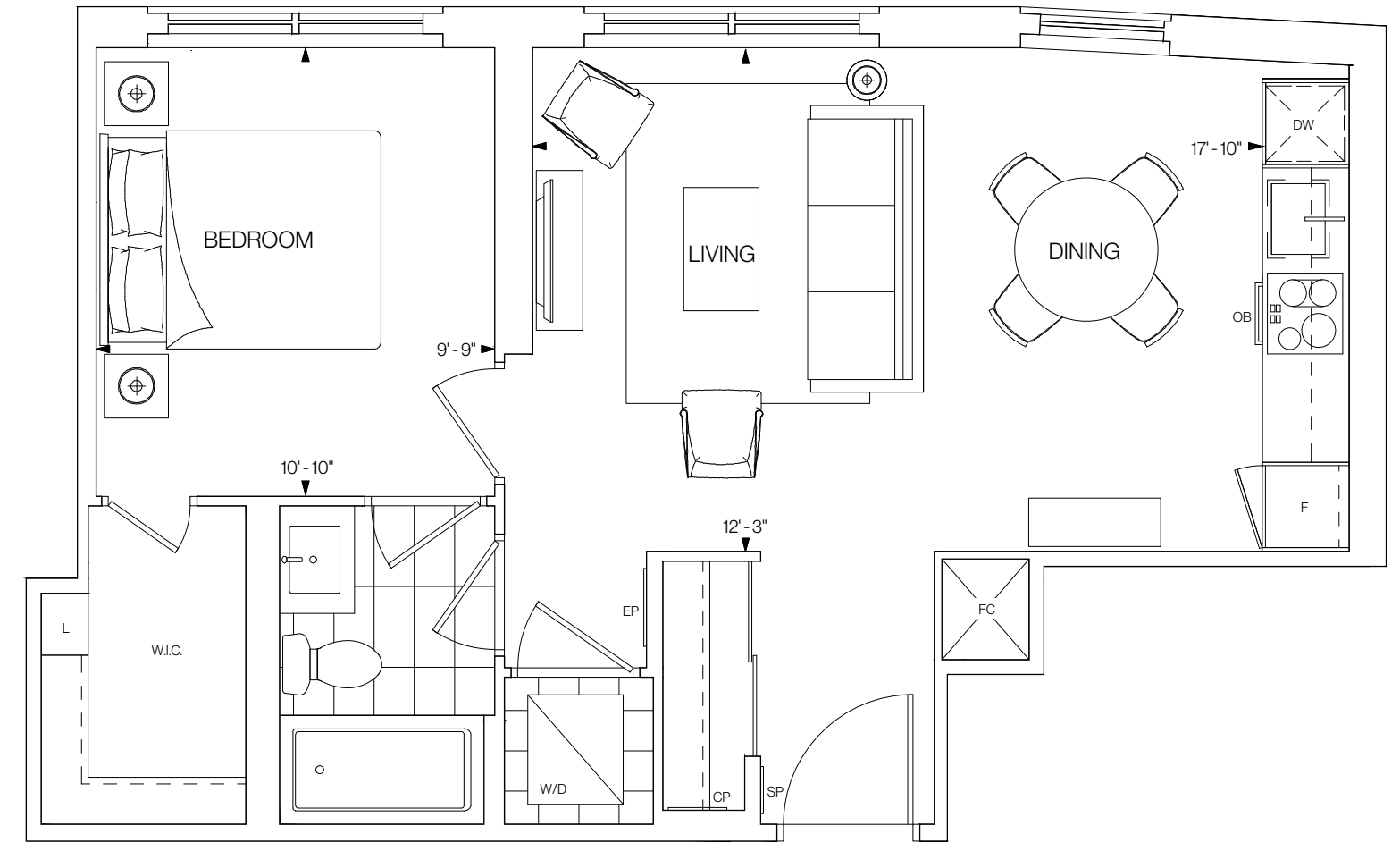
**1 BEDROOM 1 BATHROOM**

**SOUTH FACING**

FLOORS 14-20



©Tridel 2020. \*Tridel, "D" design, Tridel Built for Life and Tridel Built for Life Design are registered Trademarks of Tridel Corporation. Project names and logos are Trademarks of their respective owners. All rights reserved. Buildings and views not to scale. All dimensions are approximate and subject to normal construction variances. Dimensions may exceed the usable floor area. Sizes and specifications subject to change without notice. Actual usable floor space may vary from the stated floor area. Furniture is displayed for illustration purposes only and does not necessarily reflect the electrical plan for the suite. Suites are sold unfurnished. Balcony, terrace and façade variations may apply, contact a sales representative for further details. Illustrations are artist's concept only. Prices and specifications subject to change without notice. E.&O.E. October 2020.



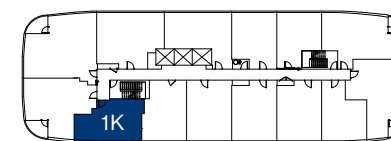
**1K**

**603 SQ.FT.**

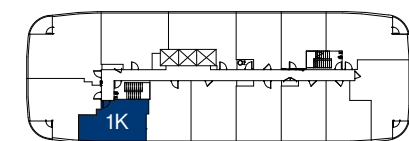
**1 BEDROOM 1 BATHROOM**

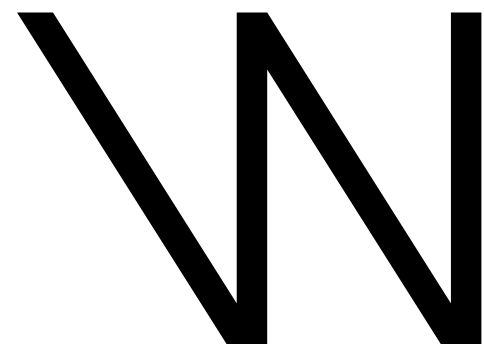
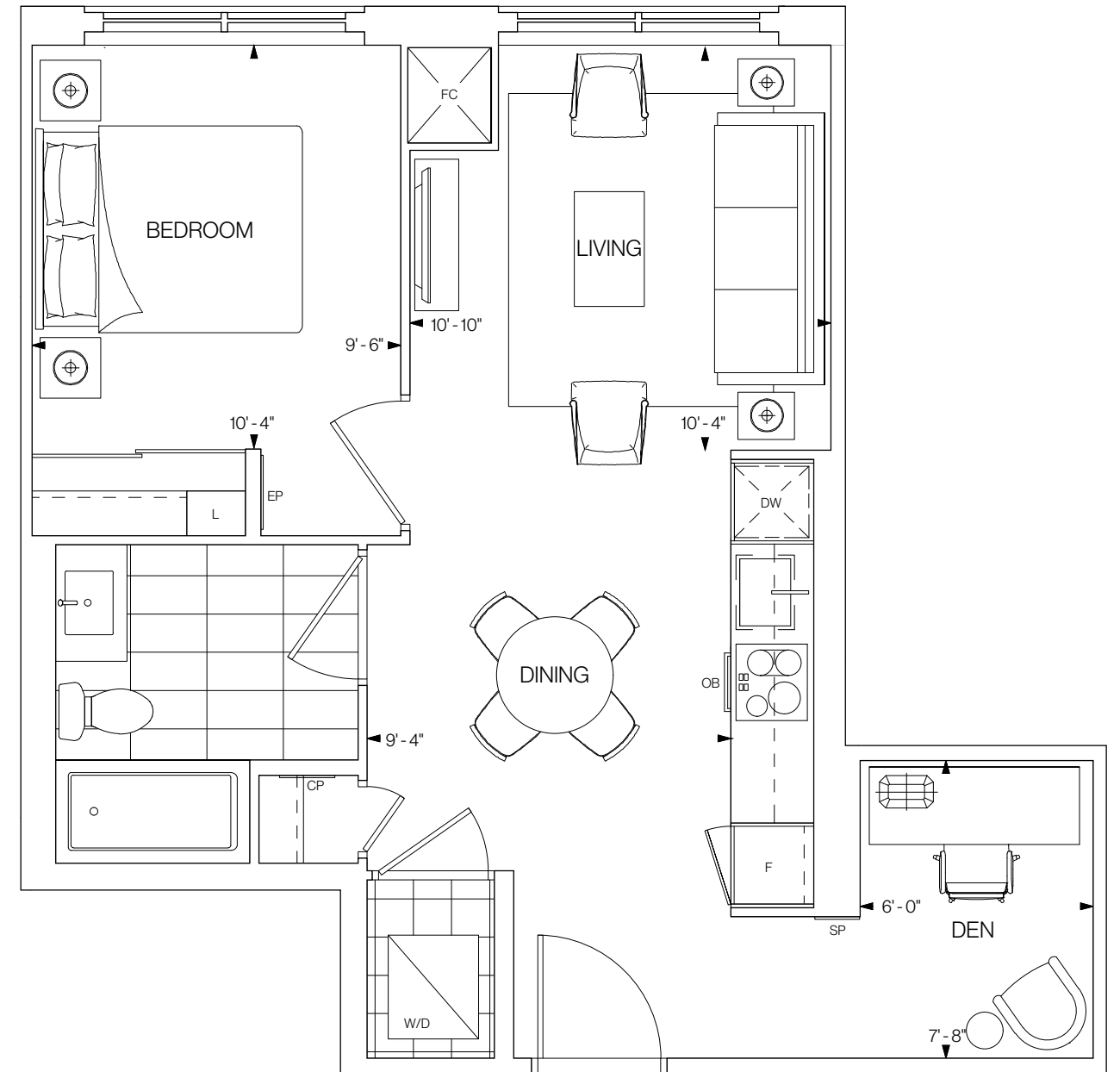
**SOUTHWEST FACING**

FLOOR 6



FLOORS 7-12





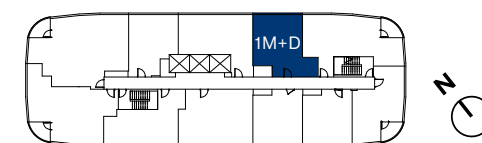
# 1M+D

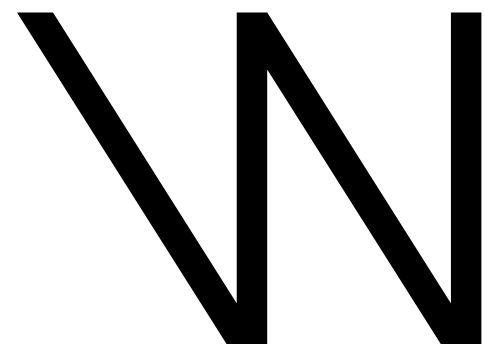
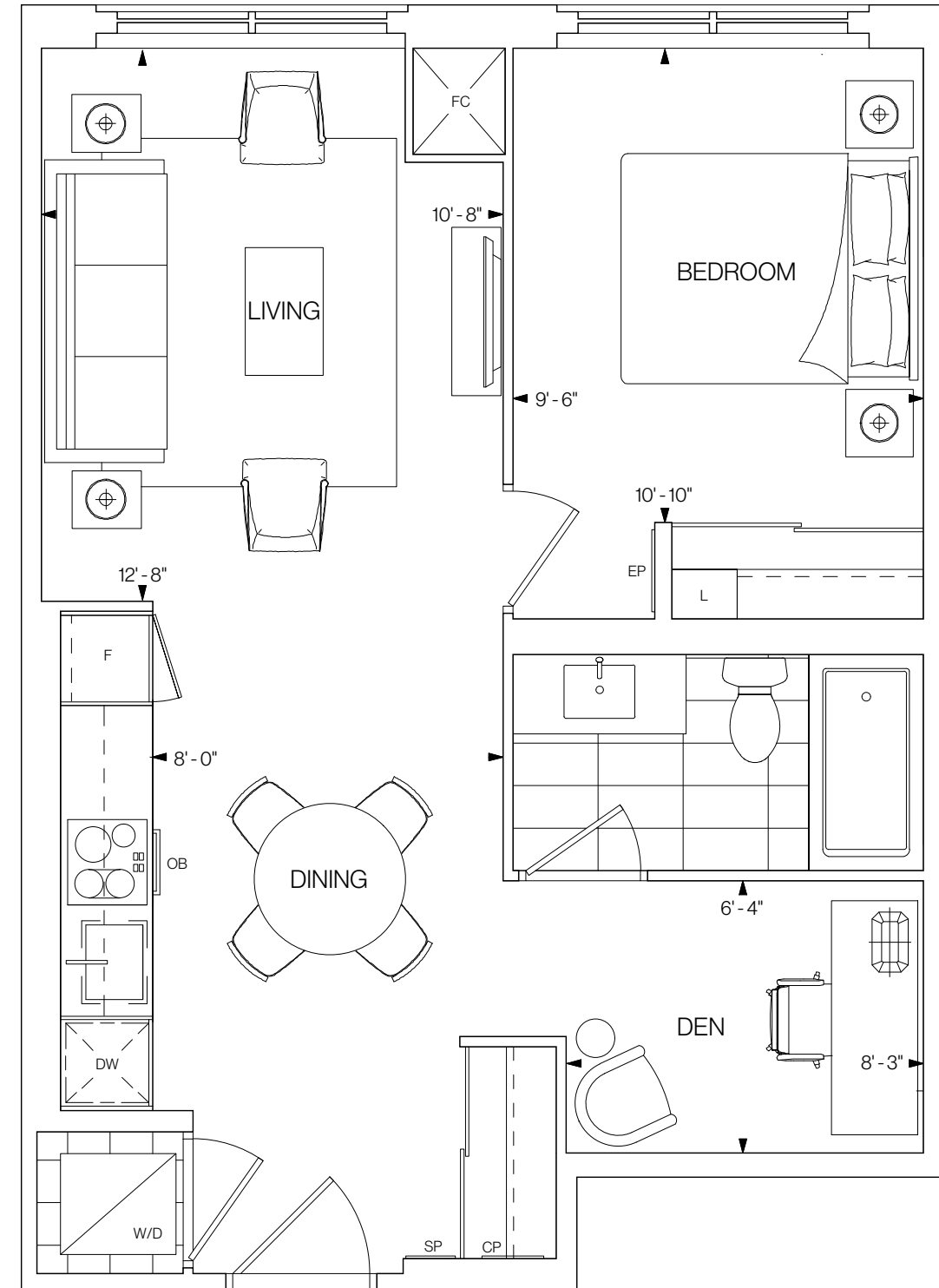
**604 SQ.FT.**

**1 BEDROOM+DEN 1 BATHROOM**

**NORTHEAST FACING**

FLOORS 14-20





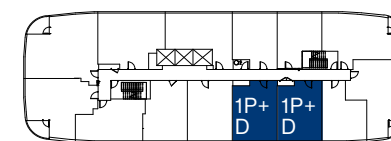
# 1P+D

614 SQ.FT.

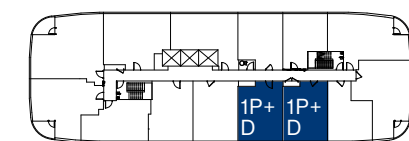
1 BEDROOM+DEN 1 BATHROOM

**SOUTHWEST FACING**

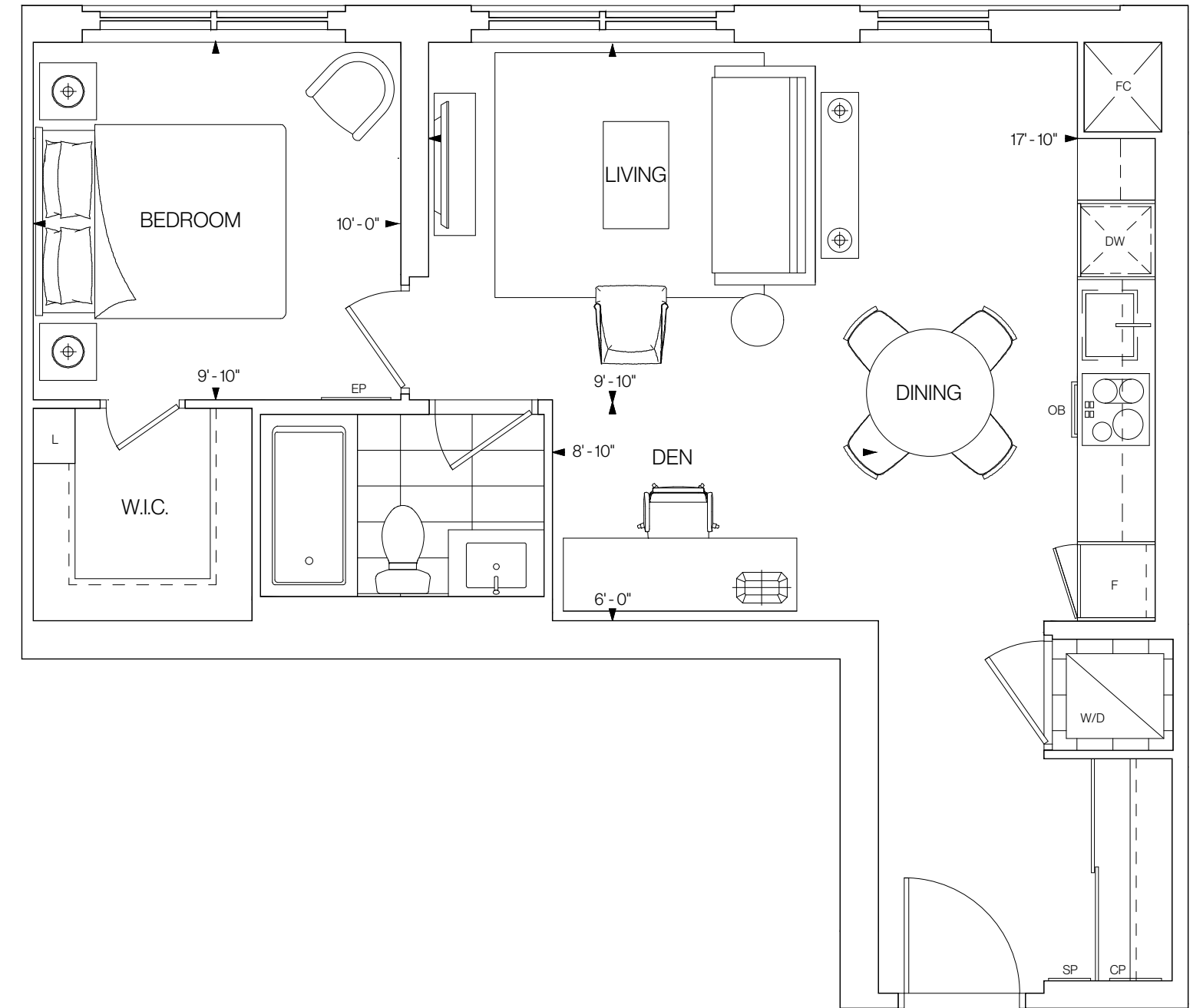
FLOOR 6



FLOORS 7-12



©Tridel 2020. \*Tridel, "D" design, Tridel Built for Life and Tridel Built for Life Design are registered Trademarks of Tridel Corporation. Project names and logos are Trademarks of their respective owners. All rights reserved. Buildings and views not to scale. All dimensions are approximate and subject to normal construction variances. Dimensions may exceed the usable floor area. Sizes and specifications subject to change without notice. Actual usable floor space may vary from the stated floor area. Furniture is displayed for illustration purposes only and does not necessarily reflect the electrical plan for the suite. Suites are sold unfurnished. Balcony, terrace and façade variations may apply, contact a sales representative for further details. Illustrations are artist's concept only. Prices and specifications subject to change without notice. E.&O.E. October 2020.



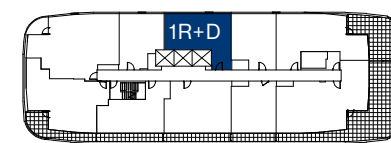
# 1R+D

665 SQ.FT.

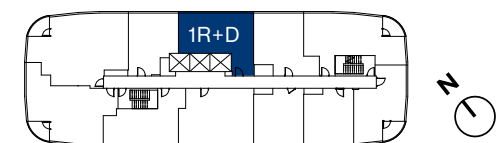
1 BEDROOM+DEN 1 BATHROOM

NORTHEAST FACING

FLOOR 13

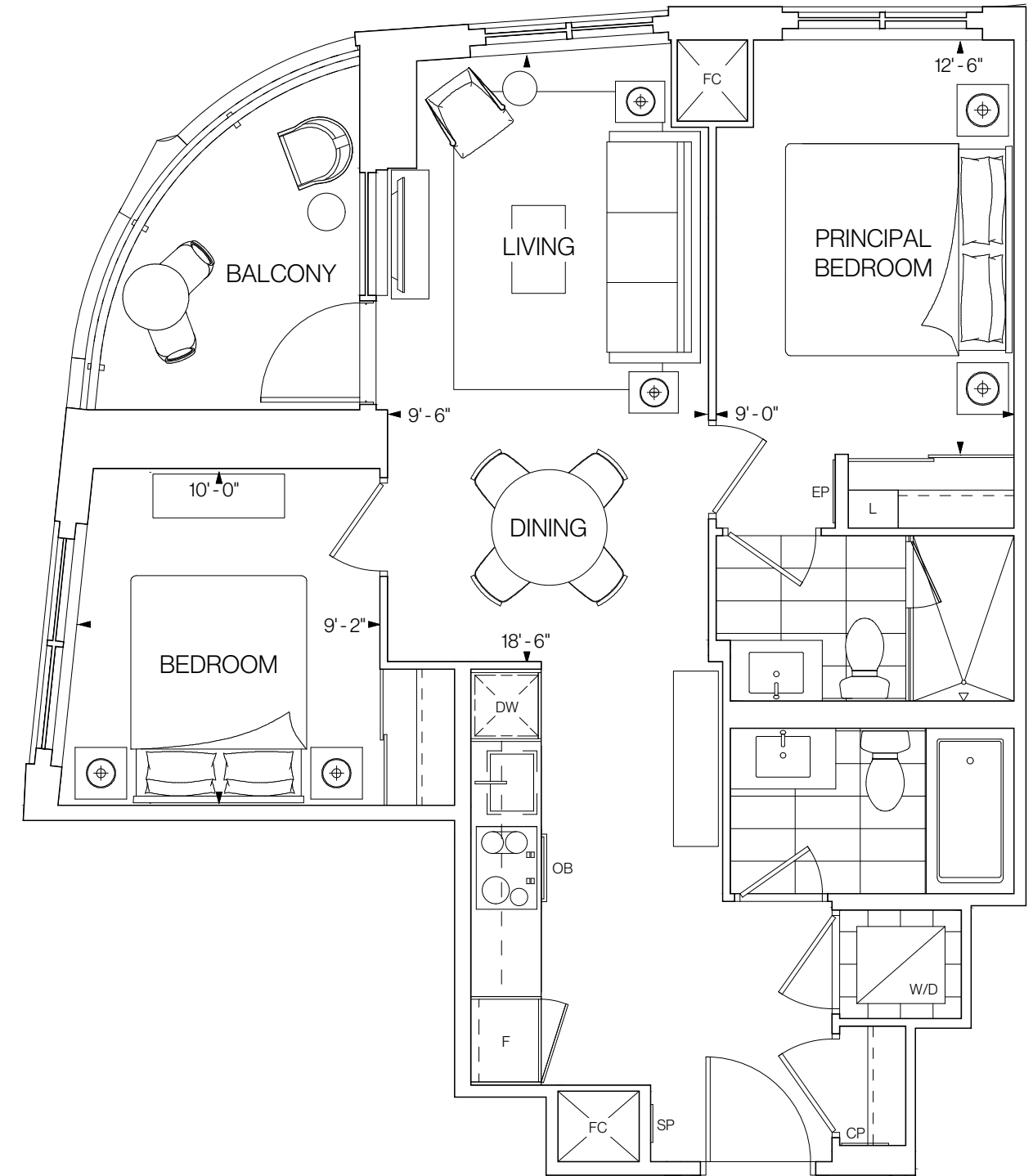


FLOORS 14-20



©Tridel 2020. \*Tridel, "D" design, Tridel Built for Life and Tridel Built for Life Design are registered Trademarks of Tridel Corporation. Project names and logos are Trademarks of their respective owners. All rights reserved. Buildings and views not to scale. All dimensions are approximate and subject to normal construction variances. Dimensions may exceed the usable floor area. Sizes and specifications subject to change without notice. Actual usable floor space may vary from the stated floor area. Furniture is displayed for illustration purposes only and does not necessarily reflect the electrical plan for the suite. Suites are sold unfurnished. Balcony, terrace and façade variations may apply, contact a sales representative for further details. Illustrations are artist's concept only. Prices and specifications subject to change without notice. E.&O.E. October 2020.

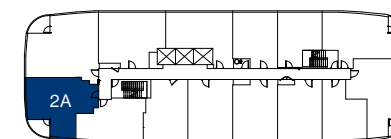




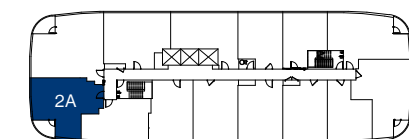
# W 2A

**769 SQ.FT.**  
**2 BEDROOMS 2 BATHROOMS**  
**WEST FACING**

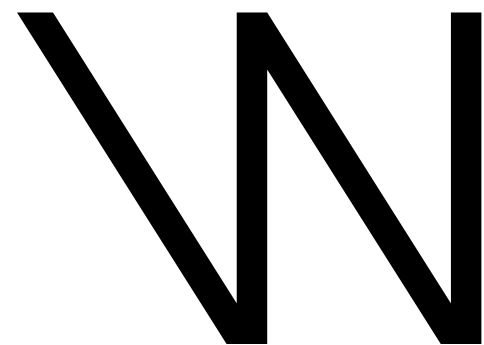
FLOOR 6



FLOORS 7-12



©Tridel 2020. \*Tridel, "D" design, Tridel Built for Life and Tridel Built for Life Design are registered Trademarks of Tridel Corporation. Project names and logos are Trademarks of their respective owners. All rights reserved. Buildings and views not to scale. All dimensions are approximate and subject to normal construction variances. Dimensions may exceed the usable floor area. Sizes and specifications subject to change without notice. Actual usable floor space may vary from the stated floor area. Furniture is displayed for illustration purposes only and does not necessarily reflect the electrical plan for the suite. Suites are sold unfurnished. Balcony, terrace and façade variations may apply, contact a sales representative for further details. Illustrations are artist's concept only. Prices and specifications subject to change without notice. E.&O.E. October 2020.

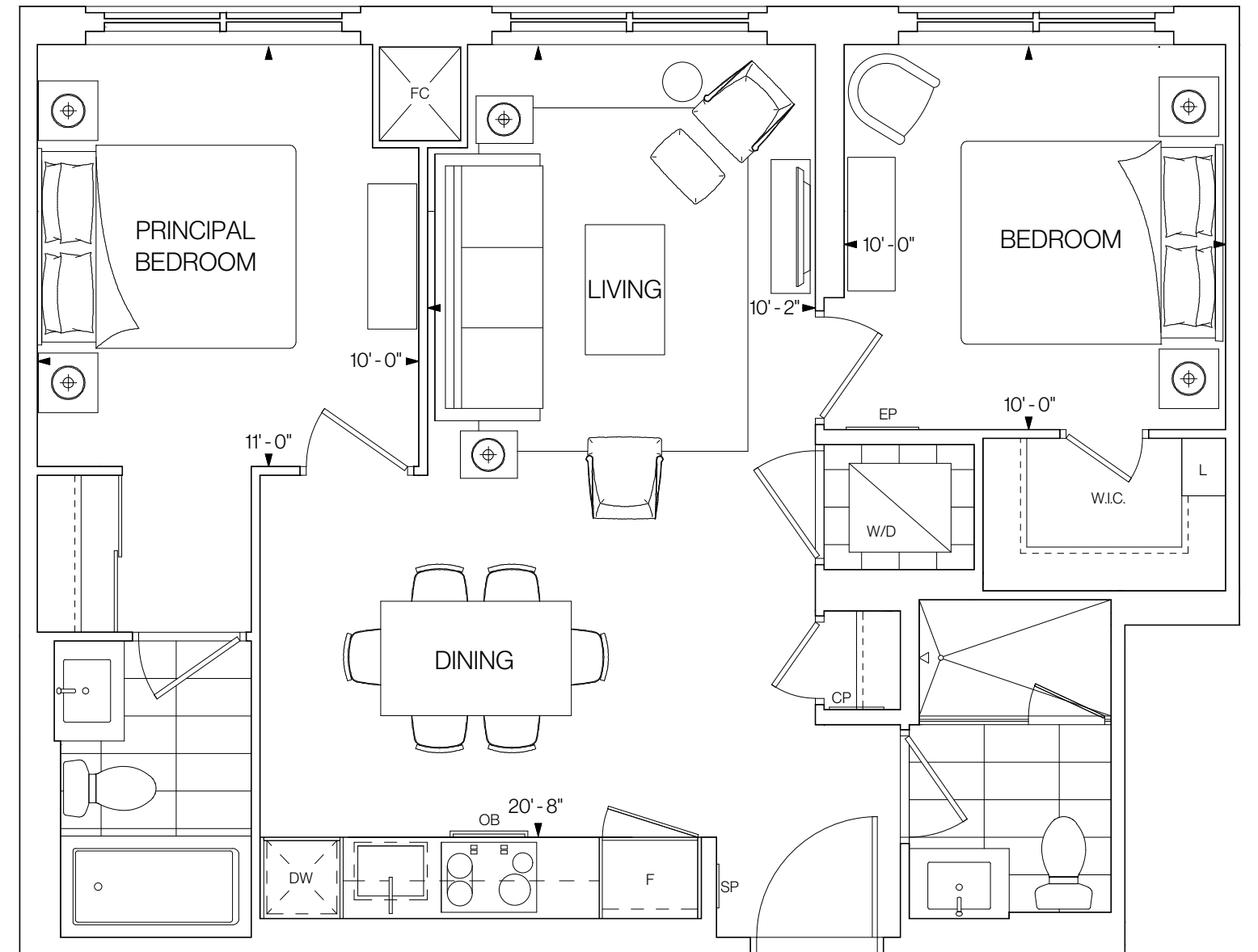


# 2B

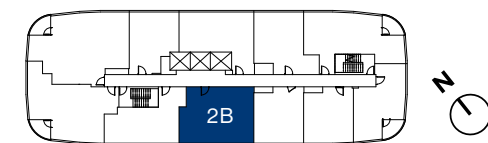
769 SQ.FT.

2 BEDROOMS 2 BATHROOMS

SOUTHWEST FACING



FLOORS 14-20



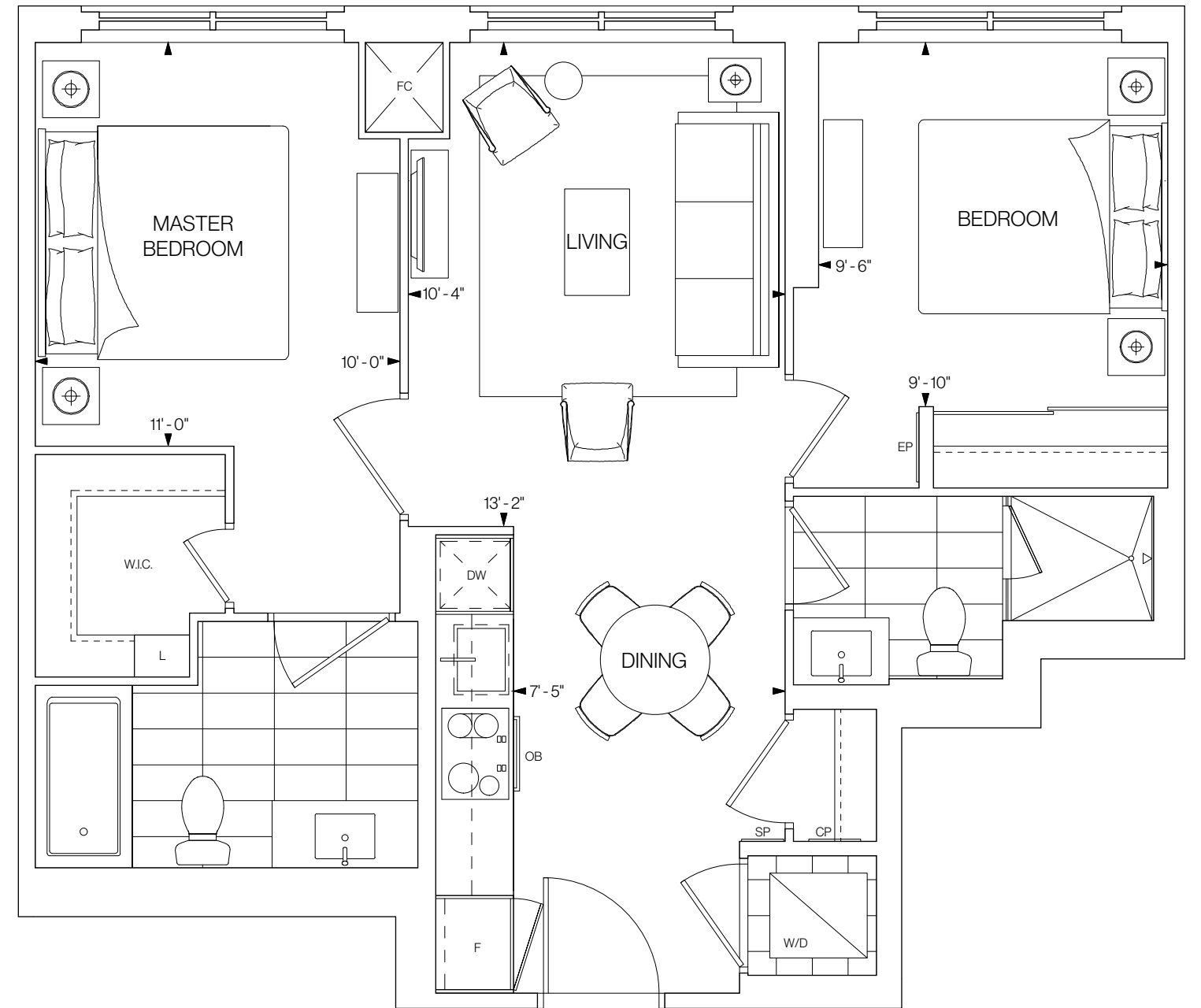
©Tridel 2020. \*Tridel, "D" design, Tridel Built for Life and Tridel Built for Life Design are registered Trademarks of Tridel Corporation. Project names and logos are Trademarks of their respective owners. All rights reserved. Buildings and views not to scale. All dimensions are approximate and subject to normal construction variances. Dimensions may exceed the usable floor area. Sizes and specifications subject to change without notice. Actual usable floor space may vary from the stated floor area. Furniture is displayed for illustration purposes only and does not necessarily reflect the electrical plan for the suite. Suites are sold unfurnished. Balcony, terrace and façade variations may apply, contact a sales representative for further details. Illustrations are artist's concept only. Prices and specifications subject to change without notice. E.&O.E. October 2020.

# 2C

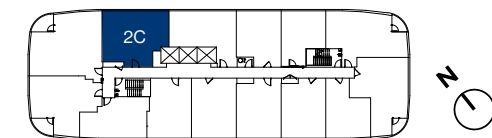
786 SQ.FT.

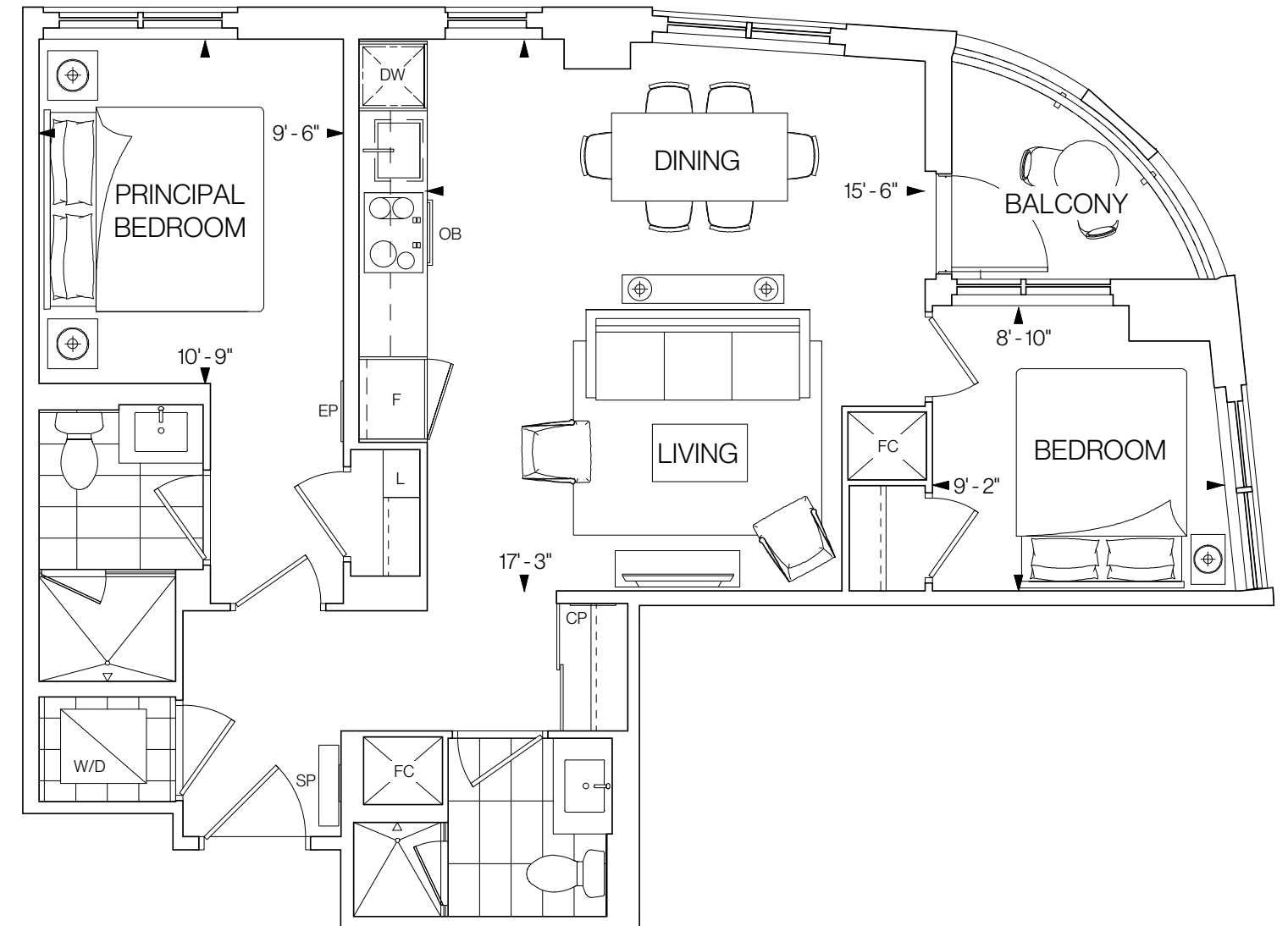
2 BEDROOMS 2 BATHROOMS

NORTHEAST FACING



FLOORS 7-12

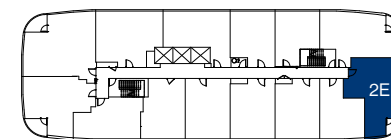




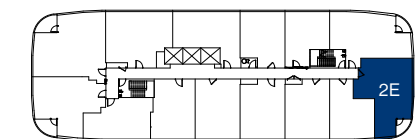
# W 2E

**800 SQ.FT.**  
**2 BEDROOMS 2 BATHROOMS**  
**SOUTH FACING**

FLOOR 6

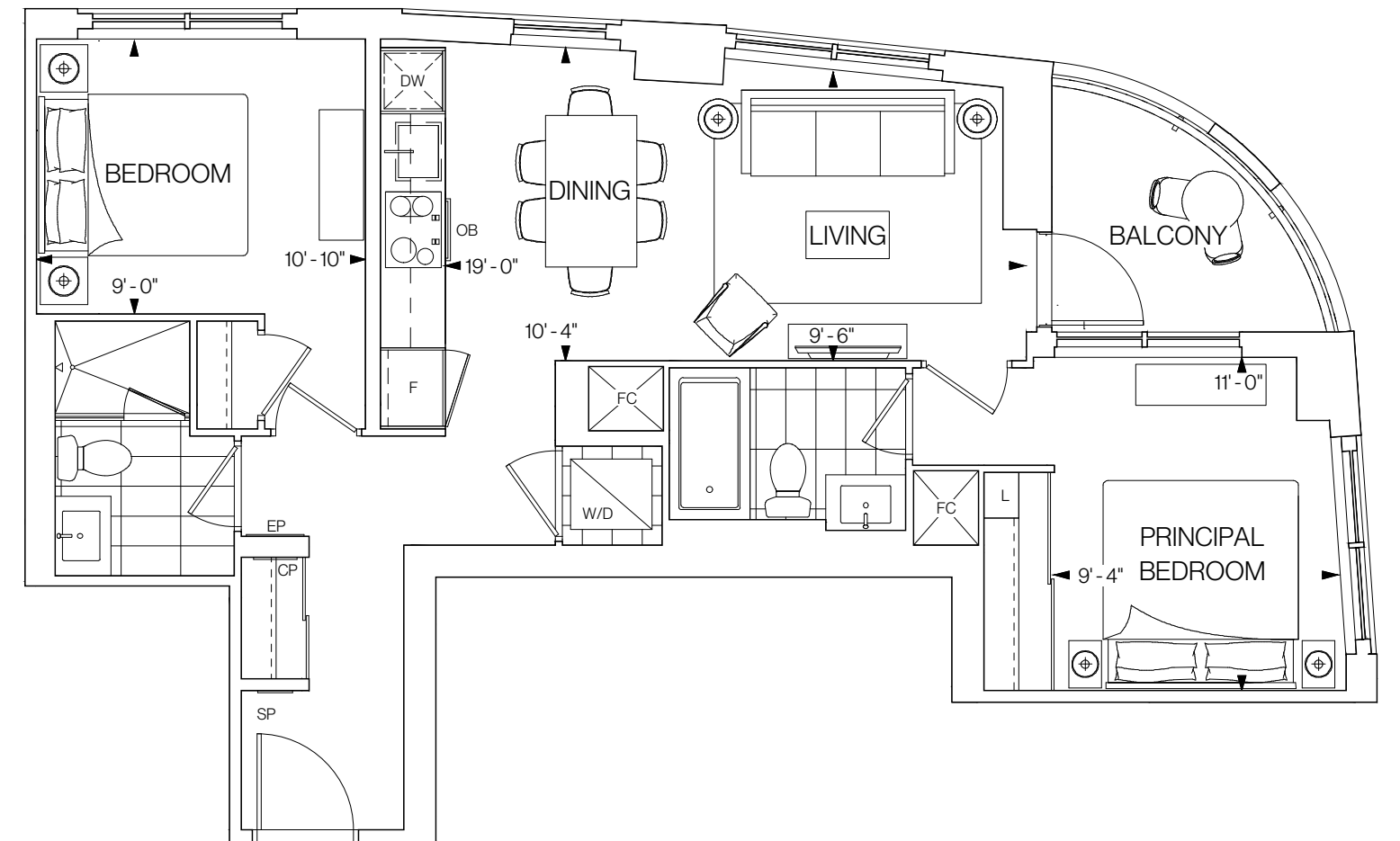


FLOORS 7-12

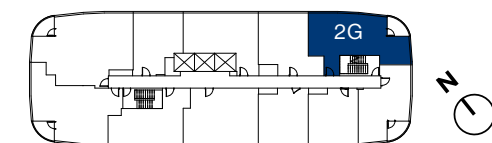


# W 2G

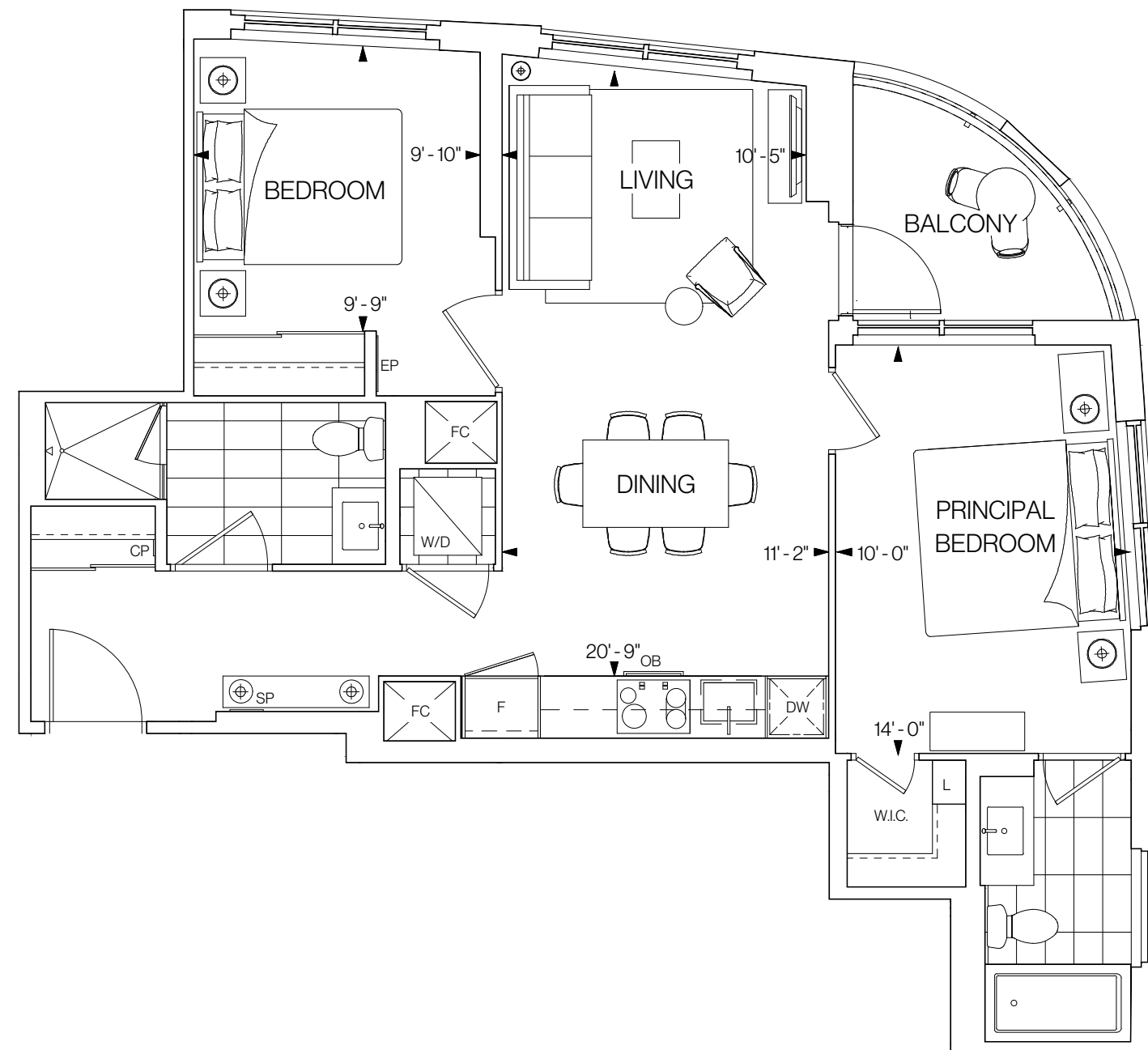
**818 SQ.FT.**  
**2 BEDROOMS 2 BATHROOMS**  
**EAST FACING**



FLOORS 14-20



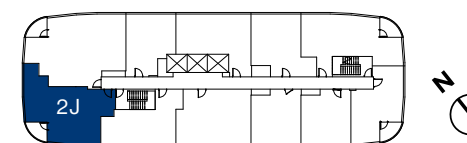
©Tridel 2020. \*Tridel, "D" design, Tridel Built for Life and Tridel Built for Life Design are registered Trademarks of Tridel Corporation. Project names and logos are Trademarks of their respective owners. All rights reserved. Buildings and views not to scale. All dimensions are approximate and subject to normal construction variances. Dimensions may exceed the usable floor area. Sizes and specifications subject to change without notice. Actual usable floor space may vary from the stated floor area. Furniture is displayed for illustration purposes only and does not necessarily reflect the electrical plan for the suite. Suites are sold unfurnished. Balcony, terrace and façade variations may apply, contact a sales representative for further details. Illustrations are artist's concept only. Prices and specifications subject to change without notice. E.&O.E. October 2020.



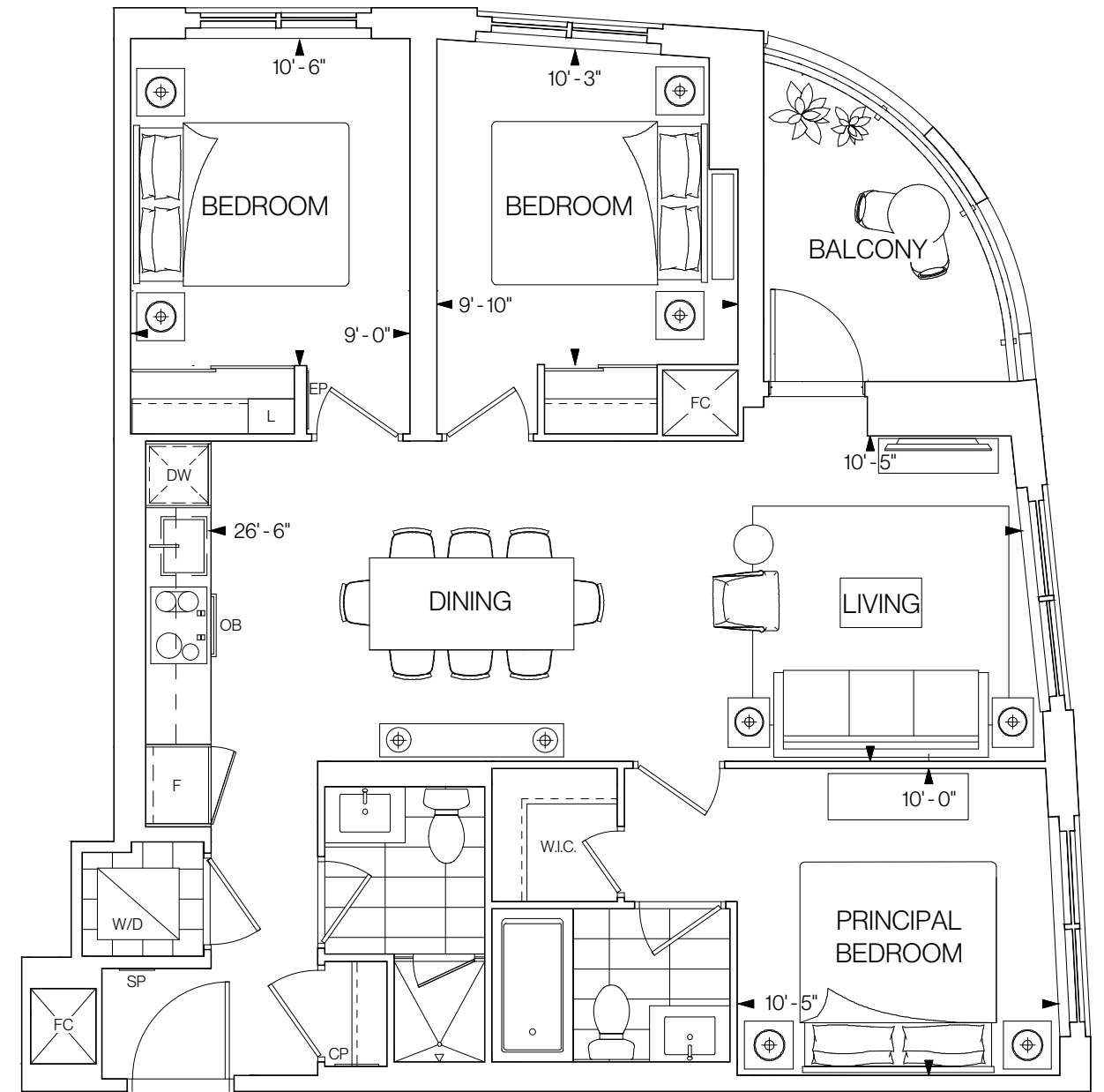
# W 2J

**889 SQ.FT.**  
**2 BEDROOMS 2 BATHROOMS**  
**WEST FACING**

FLOORS 14-20



©Tridel 2020. \*Tridel, "D" design, Tridel Built for Life and Tridel Built for Life Design are registered Trademarks of Tridel Corporation. Project names and logos are Trademarks of their respective owners. All rights reserved. Buildings and views not to scale. All dimensions are approximate and subject to normal construction variances. Dimensions may exceed the usable floor area. Sizes and specifications subject to change without notice. Actual usable floor space may vary from the stated floor area. Furniture is displayed for illustration purposes only and does not necessarily reflect the electrical plan for the suite. Suites are sold unfurnished. Balcony, terrace and façade variations may apply, contact a sales representative for further details. Illustrations are artist's concept only. Prices and specifications subject to change without notice. E.&O.E. October 2020.



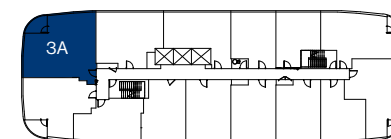
# N 3A

987 SQ.FT.

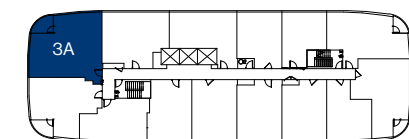
3 BEDROOMS 2 BATHROOMS

NORTH FACING

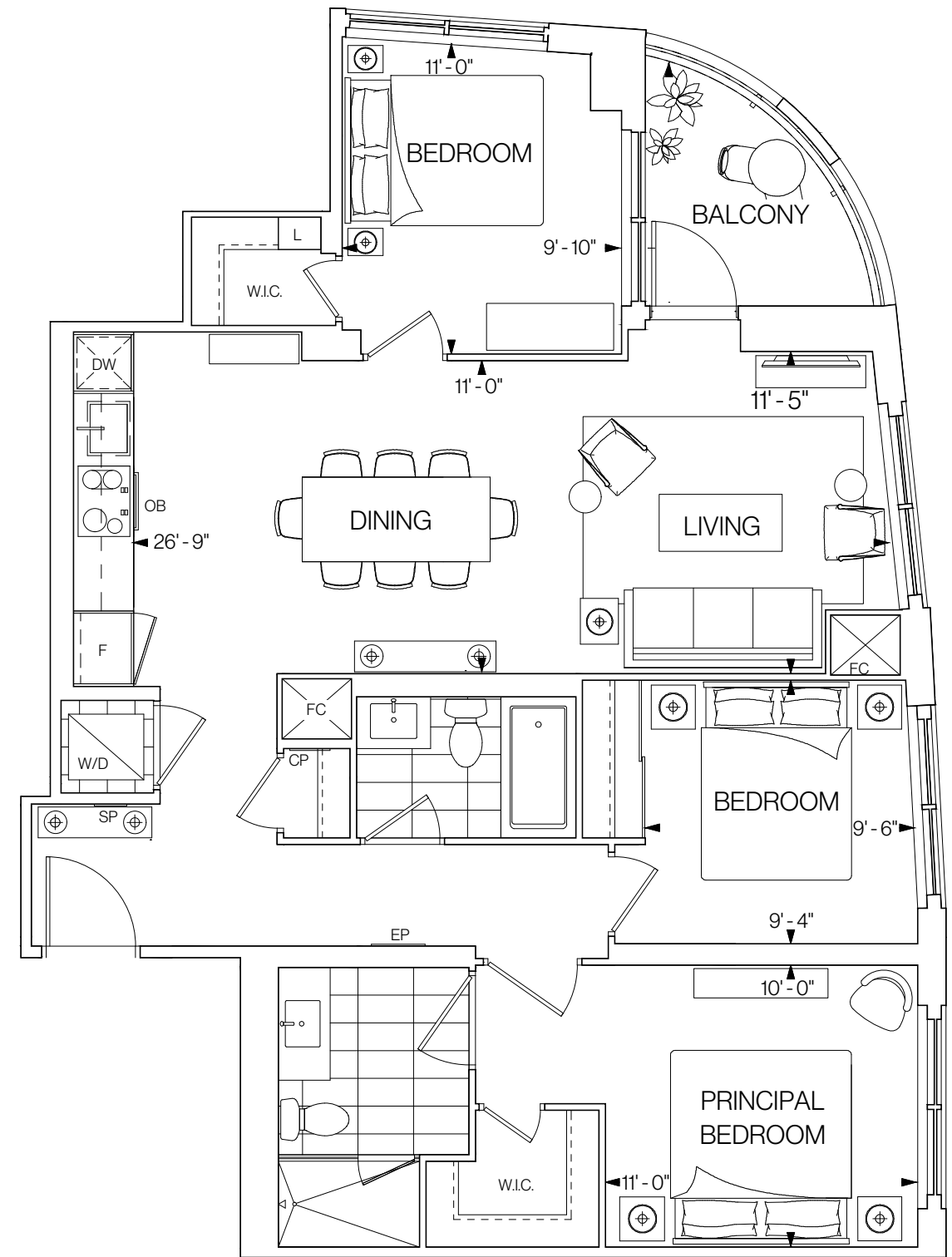
FLOOR 6



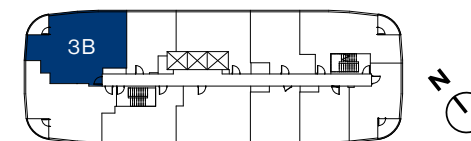
FLOORS 7-12



©Tridel 2020. \*Tridel, "D" design, Tridel Built for Life and Tridel Built for Life Design are registered Trademarks of Tridel Corporation. Project names and logos are Trademarks of their respective owners. All rights reserved. Buildings and views not to scale. All dimensions are approximate and subject to normal construction variances. Dimensions may exceed the usable floor area. Sizes and specifications subject to change without notice. Actual usable floor space may vary from the stated floor area. Furniture is displayed for illustration purposes only and does not necessarily reflect the electrical plan for the suite. Suites are sold unfurnished. Balcony, terrace and façade variations may apply, contact a sales representative for further details. Illustrations are artist's concept only. Prices and specifications subject to change without notice. E.&O.E. October 2020.



FLOORS 14-20



# 3B

1,118 SQ.FT.

3 BEDROOMS 2 BATHROOMS

NORTH FACING