

THE
MODELS



ELEVATION A



ELEVATION B



ELEVATION C



THE
REGAL
40-1

3,124 SQ. FT. - ELEV. A
3,126 SQ. FT. - ELEV. B
3,069 SQ. FT. - ELEV. C

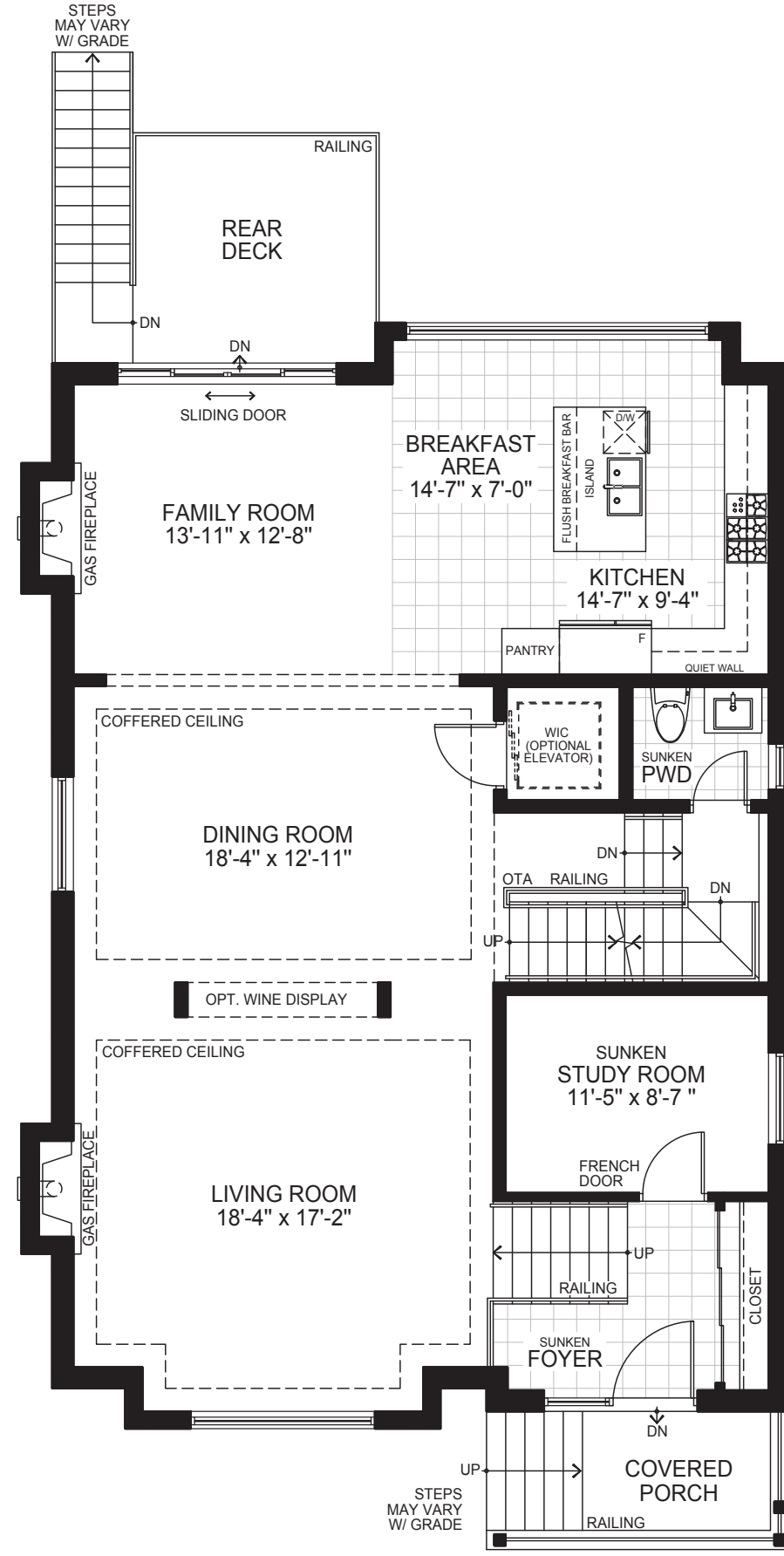
All floor plans, dimensions, specifications, drawings, renderings and elevations are approximate and not to scale. Information subject to architectural review and revision and to change without notice. Renderings are artist's concepts. E. & O. E. D.O.P. 11/2020



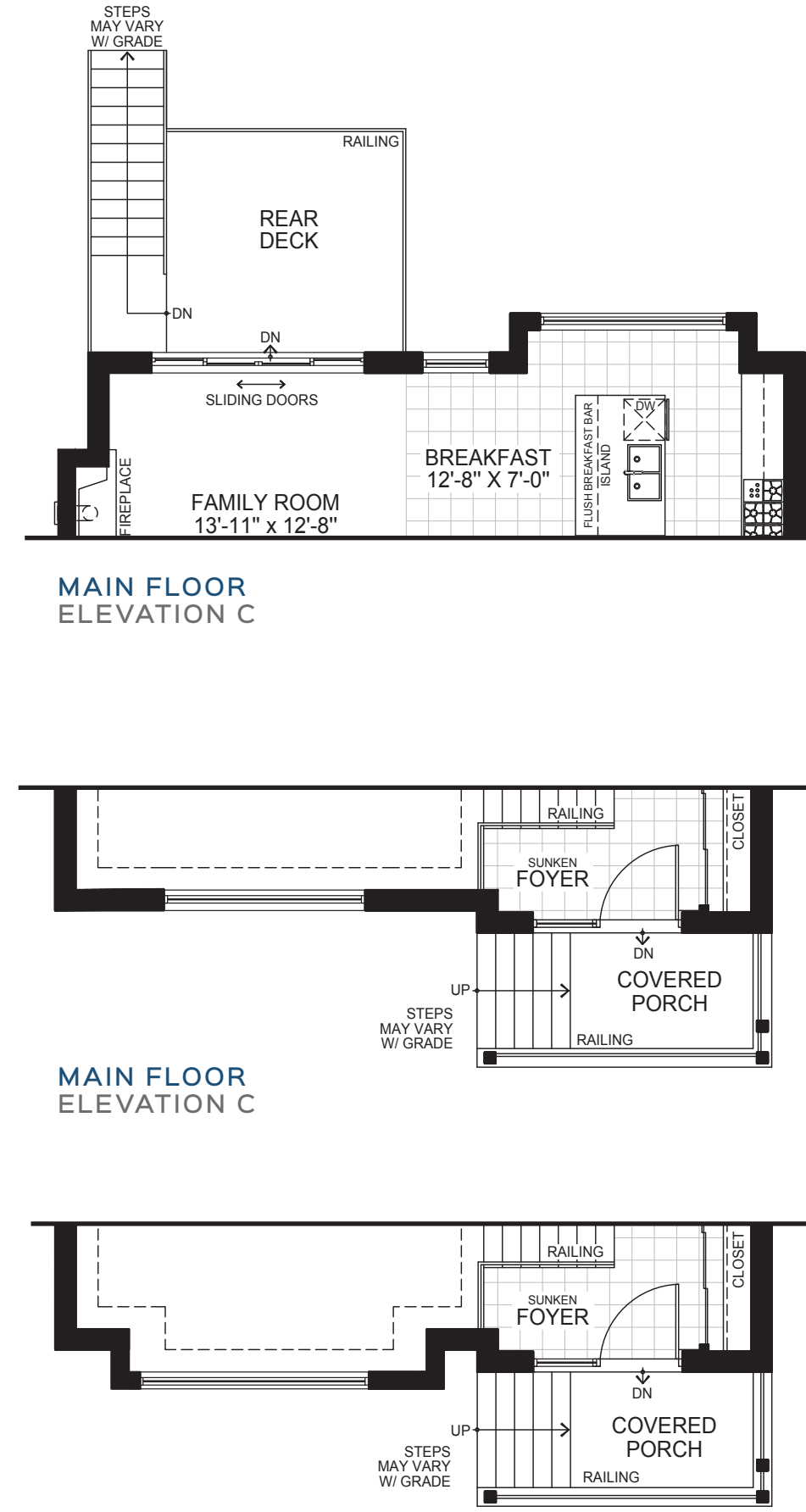
THE REGAL

40-1

3,124 SQ. FT. - ELEV. A
3,126 SQ. FT. - ELEV. B
3,069 SQ. FT. - ELEV. C



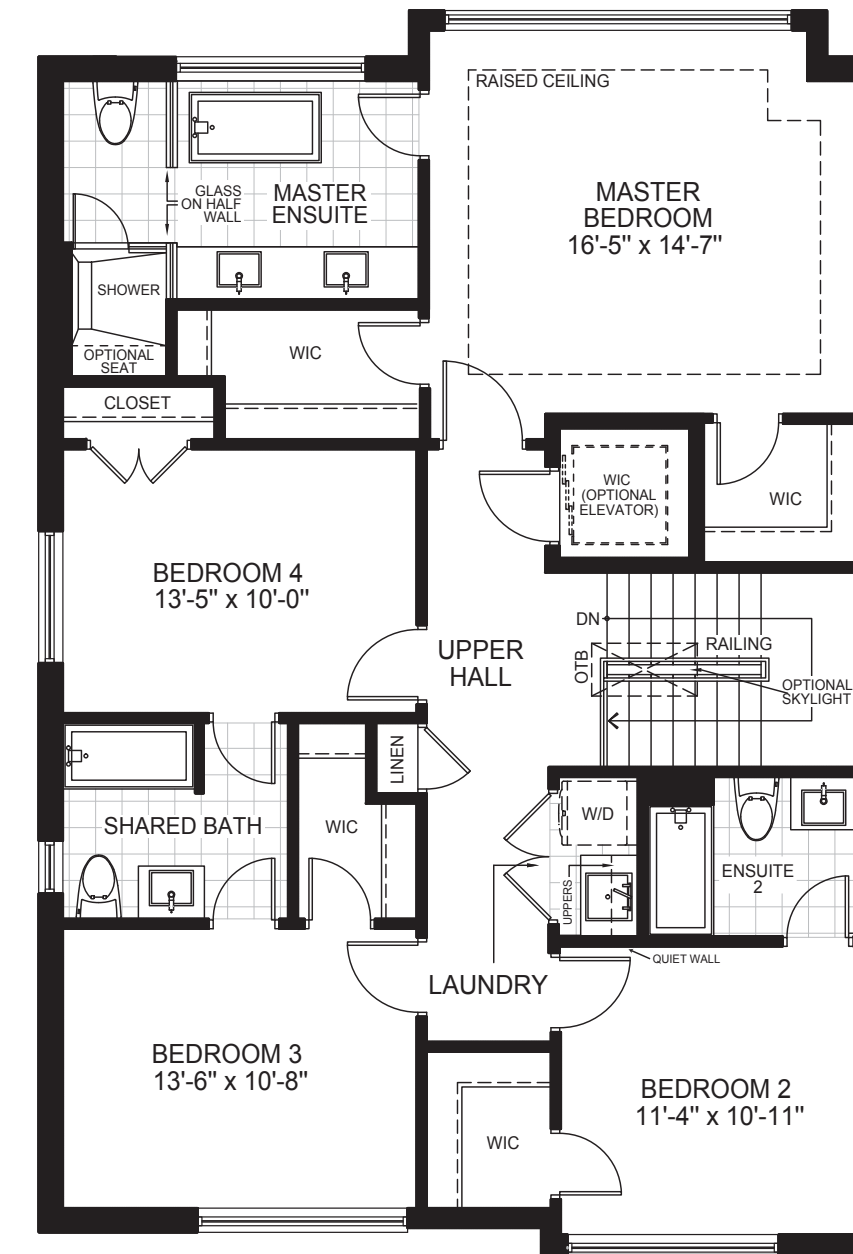
MAIN FLOOR
ELEVATION A



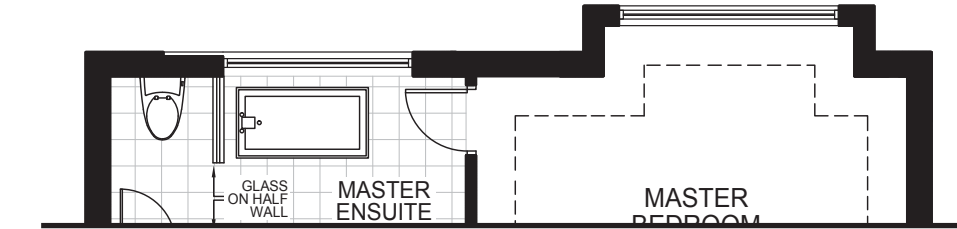
MAIN FLOOR
ELEVATION B

MAIN FLOOR
ELEVATION C

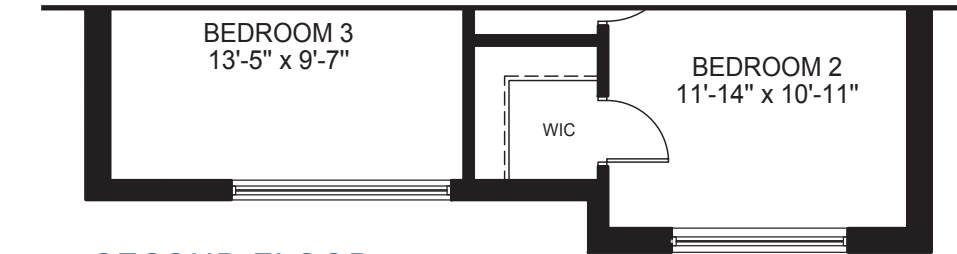
MAIN FLOOR
ELEVATION C



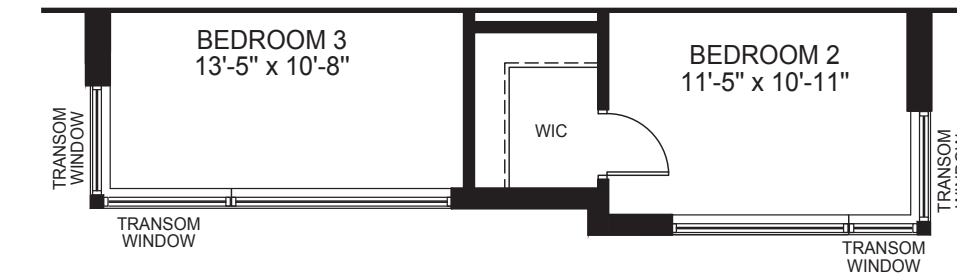
SECOND FLOOR
ELEVATION A



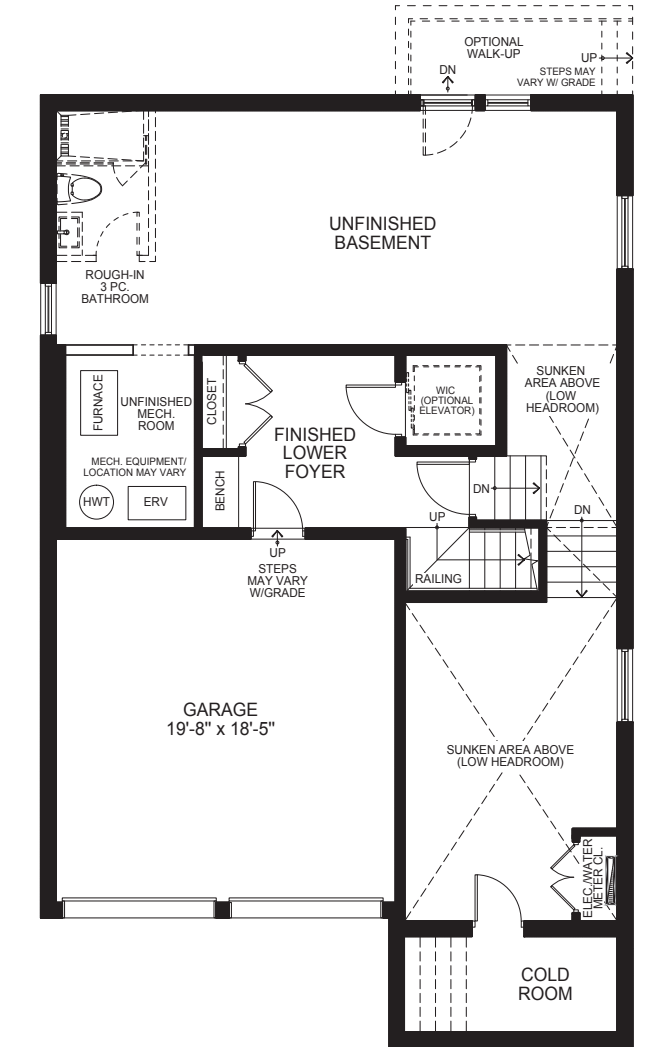
SECOND FLOOR
ELEVATION C



SECOND FLOOR
ELEVATION B



SECOND FLOOR
ELEVATION B



BASEMENT FLOOR
ELEVATION A, B & C

All floor plans, dimensions, specifications, drawings, renderings and elevations are approximate and not to scale. Information subject to architectural review and revision and to change without notice. Renderings are artist's concepts. Measurements adhere to the regulations of the Tarion Warranty Corporation's official method for the calculations of floor area. Bulkheads and mechanical systems elements are not shown on this plan. Basement columns, hot water heater and furnace will be placed based on builder's requirements. Number, size, type, colour and location of windows, doors, steps and railings provided may vary per elevation, without notice. Actual useable floor space may vary from the stated floor area. E.&O.E. - D.O.P. 11/2020



THE
MERCER
40-2

3,066 SQ. FT. - ELEV. A
3,052 SQ. FT. - ELEV. B

ELEVATION A



ELEVATION B

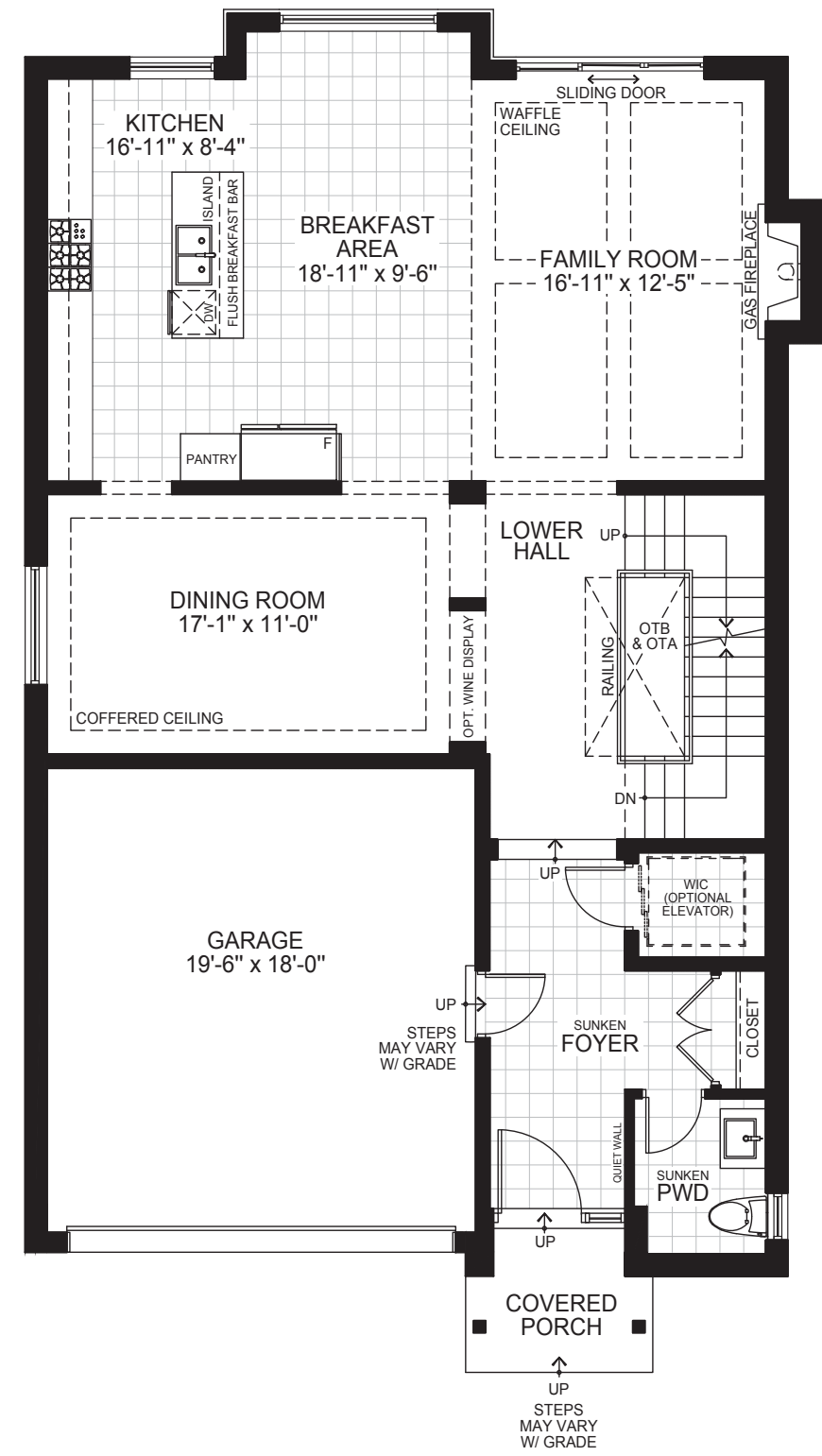




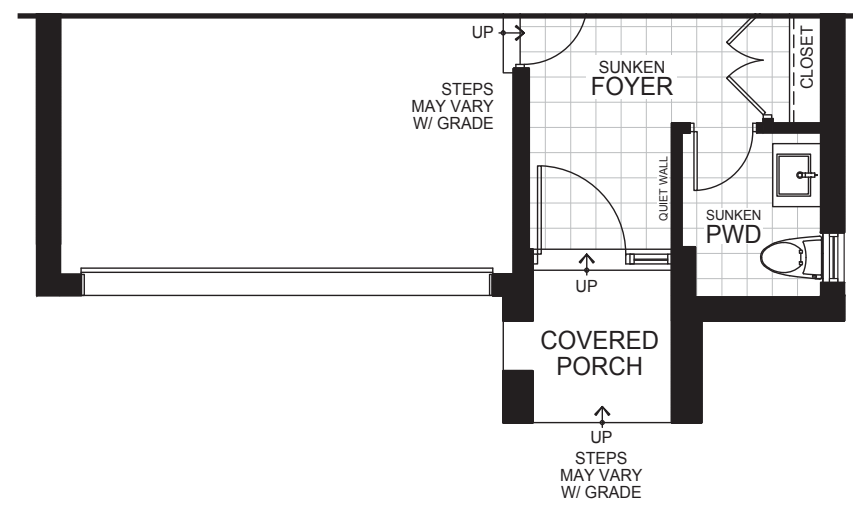
THE MERCER

40-2

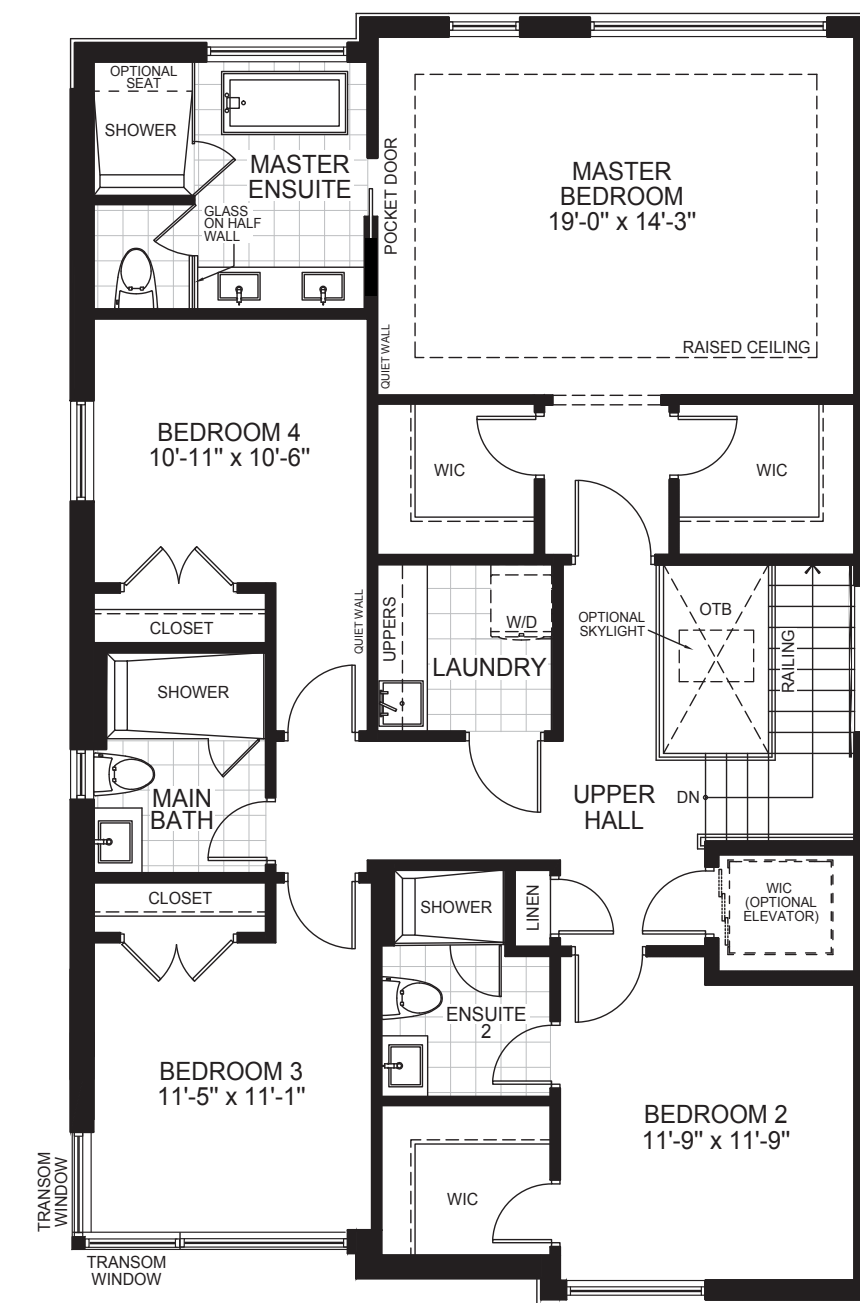
3,066 SQ. FT. - ELEV. A
3,052 SQ. FT. - ELEV. B



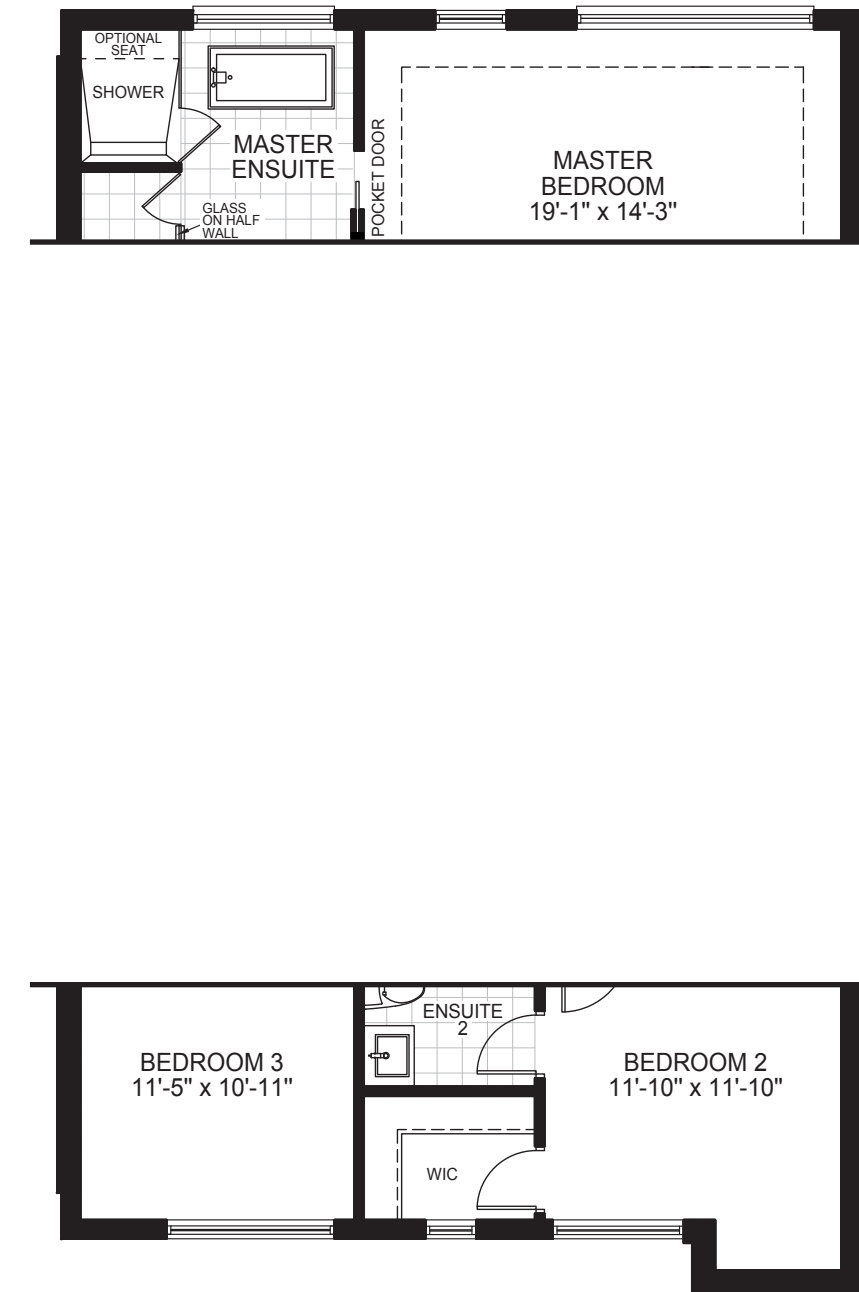
MAIN FLOOR
ELEVATION A



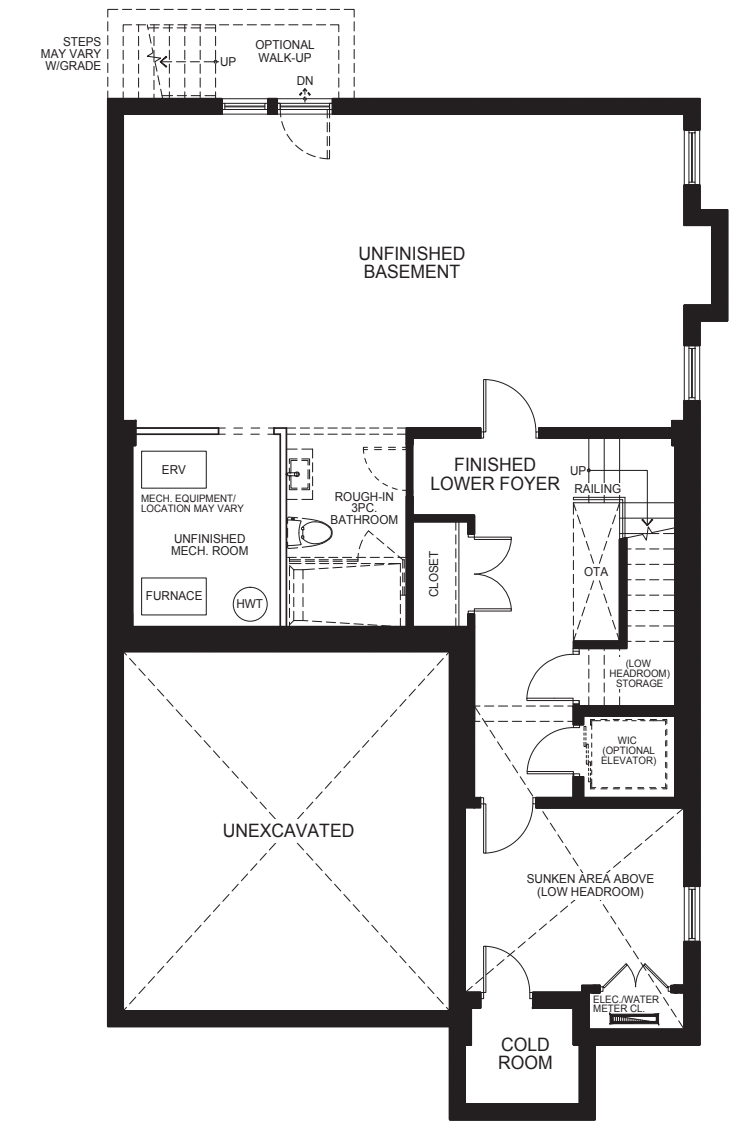
MAIN FLOOR
ELEVATION B



SECOND FLOOR
ELEVATION A



SECOND FLOOR
ELEVATION B



BASEMENT FLOOR
ELEVATION A & B

All floor plans, dimensions, specifications, drawings, renderings and elevations are approximate and not to scale. Information subject to architectural review and revision and to change without notice. Renderings are artist's concepts. Measurements adhere to the regulations of the Taron Warranty Corporation's official method for the calculations of floor area. Bulkheads and mechanical systems elements are not shown on this plan. Basement columns, hot water heater and furnace will be placed based on builder's requirements. Number, size, type, colour and location of windows, doors, steps and railings provided may vary per elevation, without notice. Actual useable floor space may vary from the stated floor area. E.&O.E. - D.O.P. 11/2020



THE
RUSSEL
50-1

3,453 SQ. FT. - ELEV. A
3,472 SQ. FT. - ELEV. B

ELEVATION A



ELEVATION B

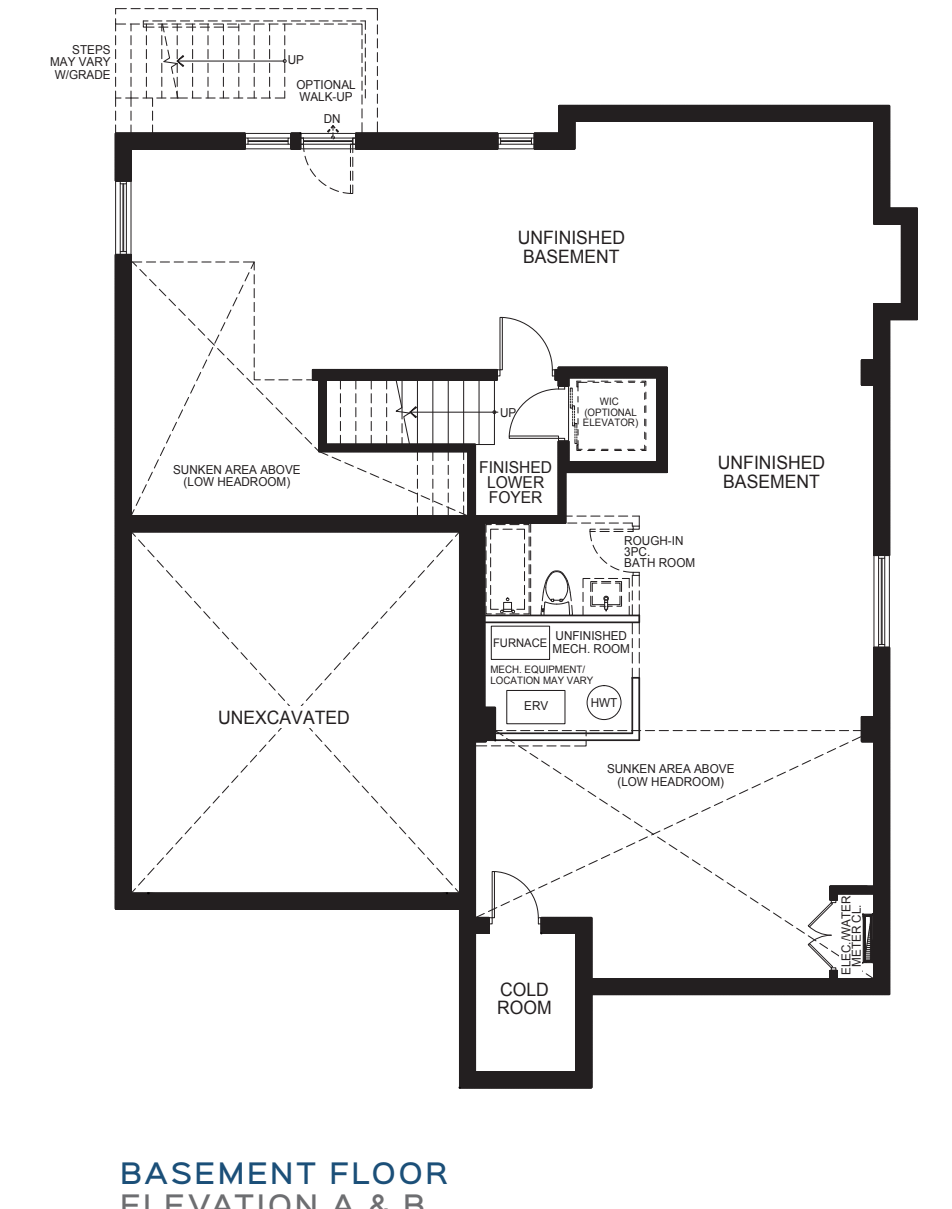
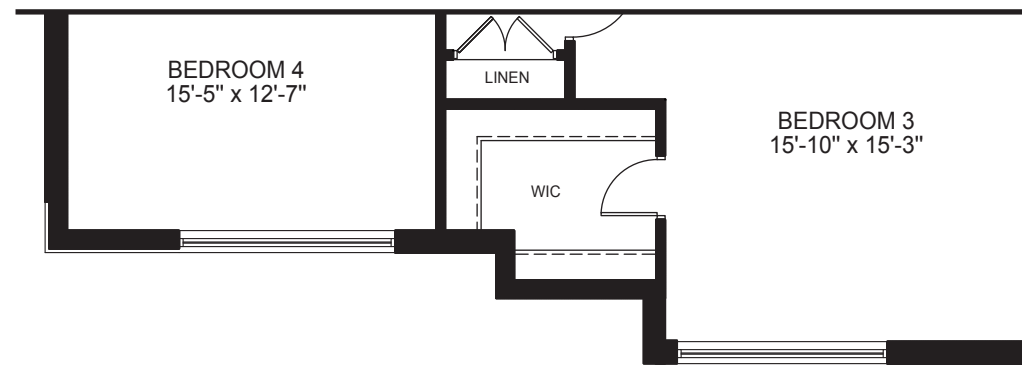
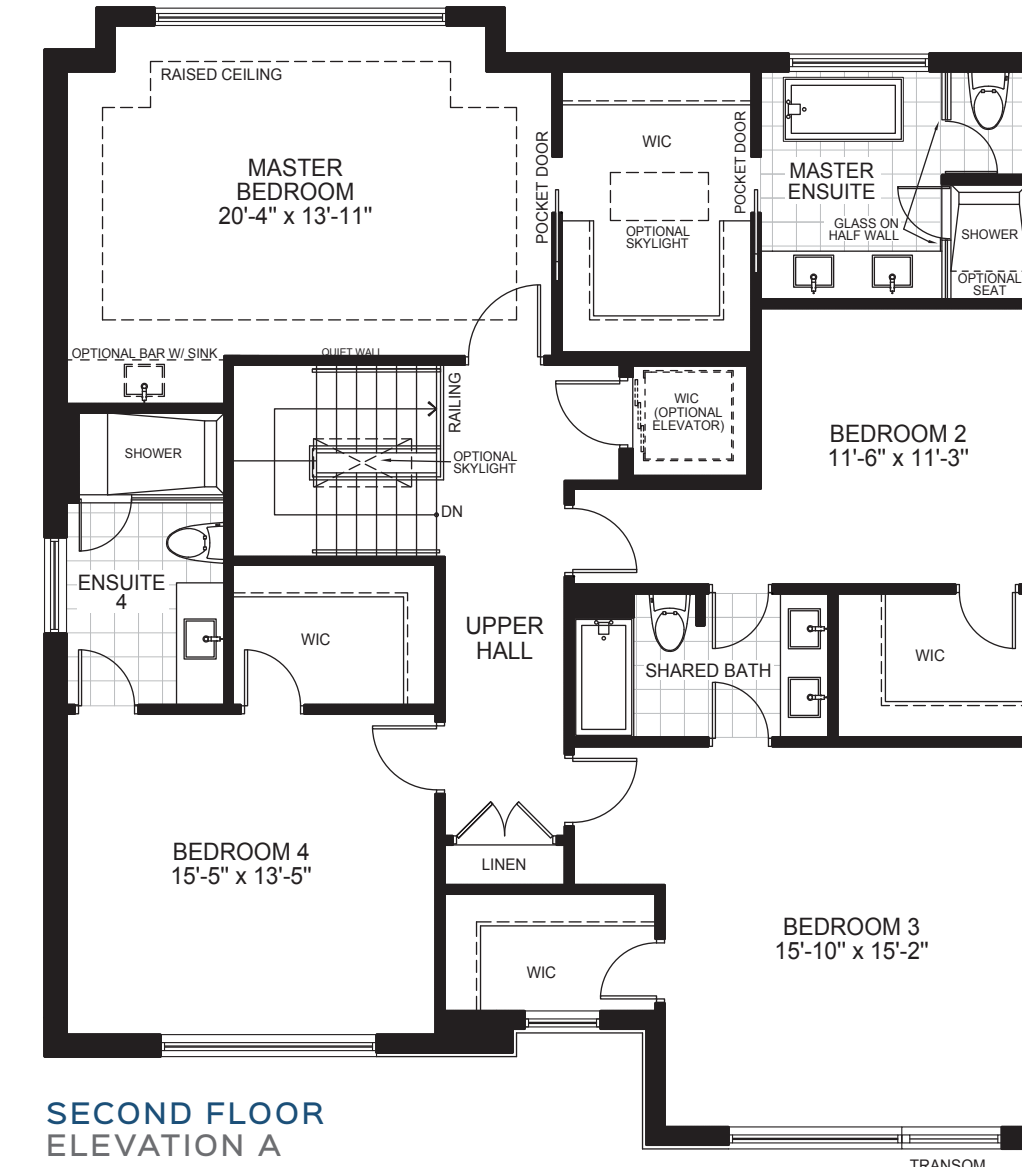
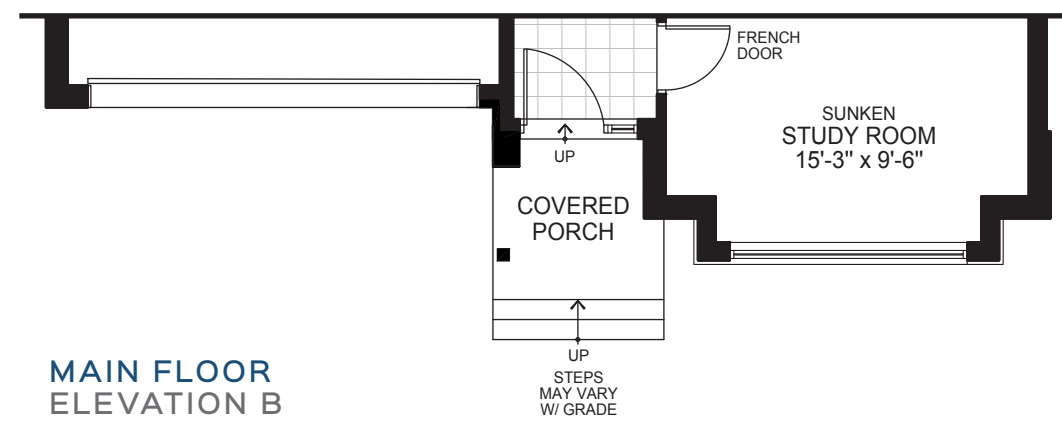
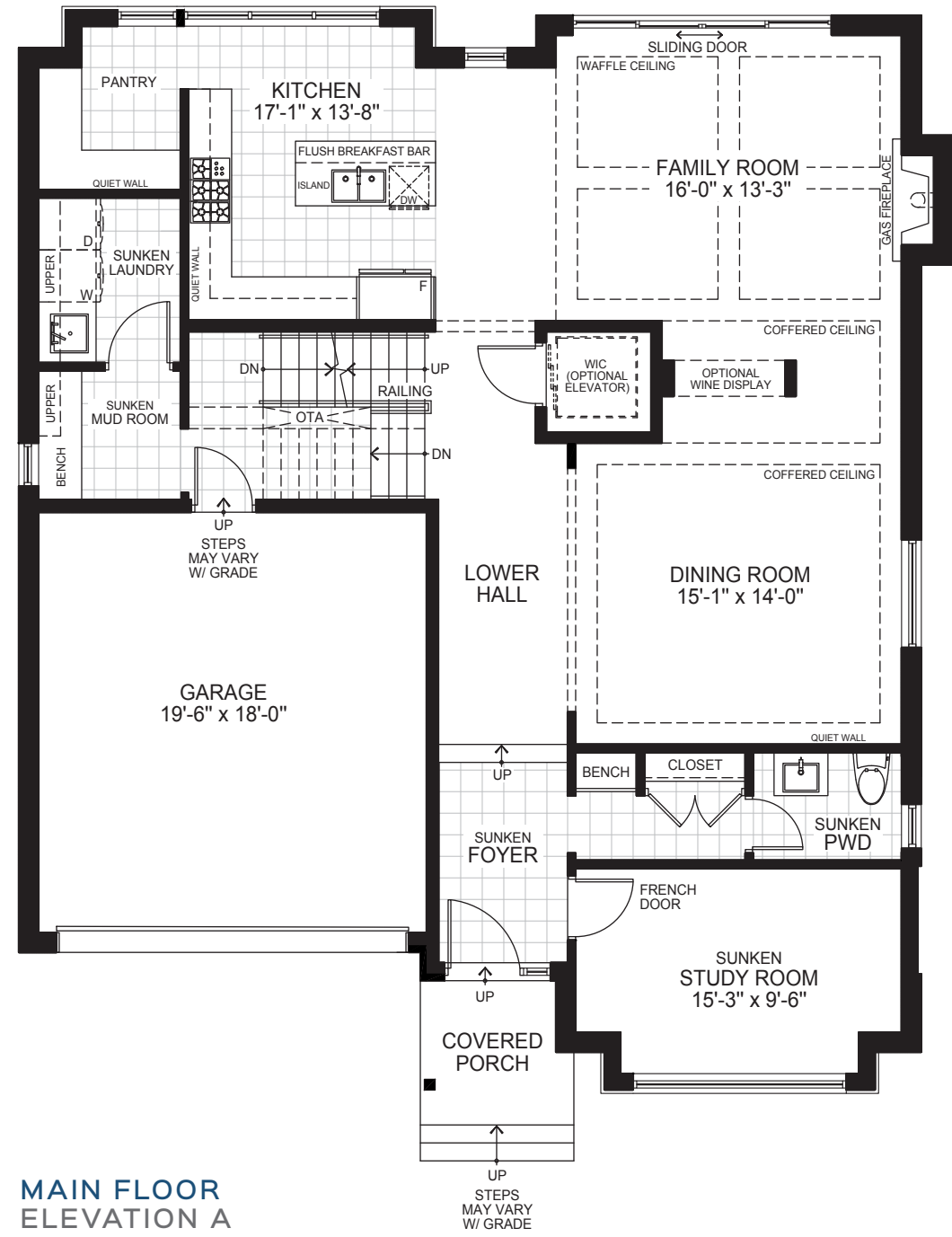




THE RUSSEL

50-1

3,453 SQ. FT. - ELEV. A
3,472 SQ. FT. - ELEV. B



All floor plans, dimensions, specifications, drawings, renderings and elevations are approximate and not to scale. Information subject to architectural review and revision and to change without notice. Renderings are artist's concepts. Measurements adhere to the regulations of the Tarion Warranty Corporation's official method for the calculations of floor area. Bulkheads and mechanical systems elements are not shown on this plan. Basement columns, hot water heater and furnace will be placed based on builder's requirements. Number, size, type, colour and location of windows, doors, steps and railings provided may vary per elevation, without notice. Actual useable floor space may vary from the stated floor area. E.&O.E. - D.O.P. 11/2020


**THE
LOCKTON**
50-2

3,818 SQ. FT. - ELEV. A
3,828 SQ. FT. - ELEV. B

ELEVATION A



ELEVATION B

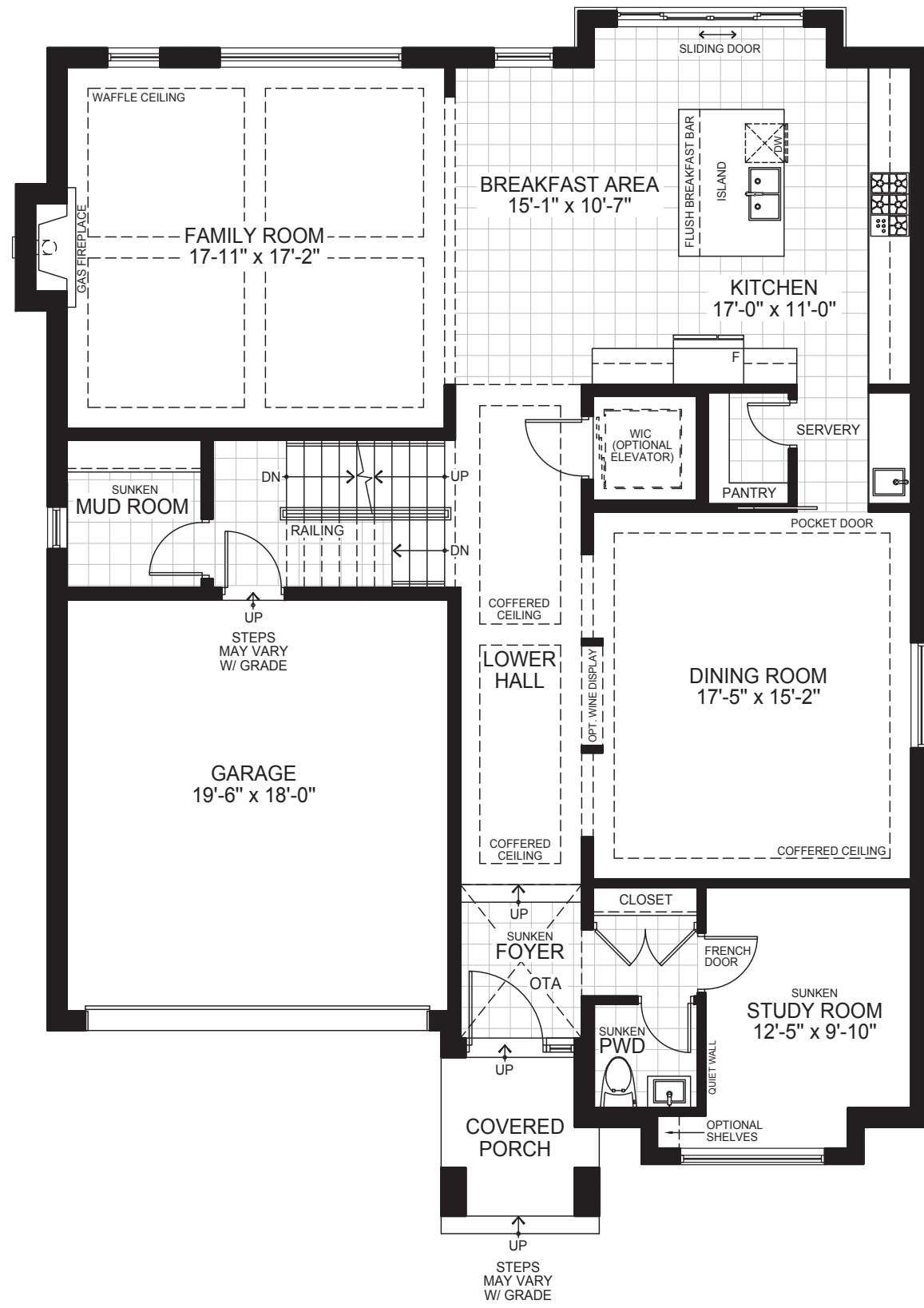




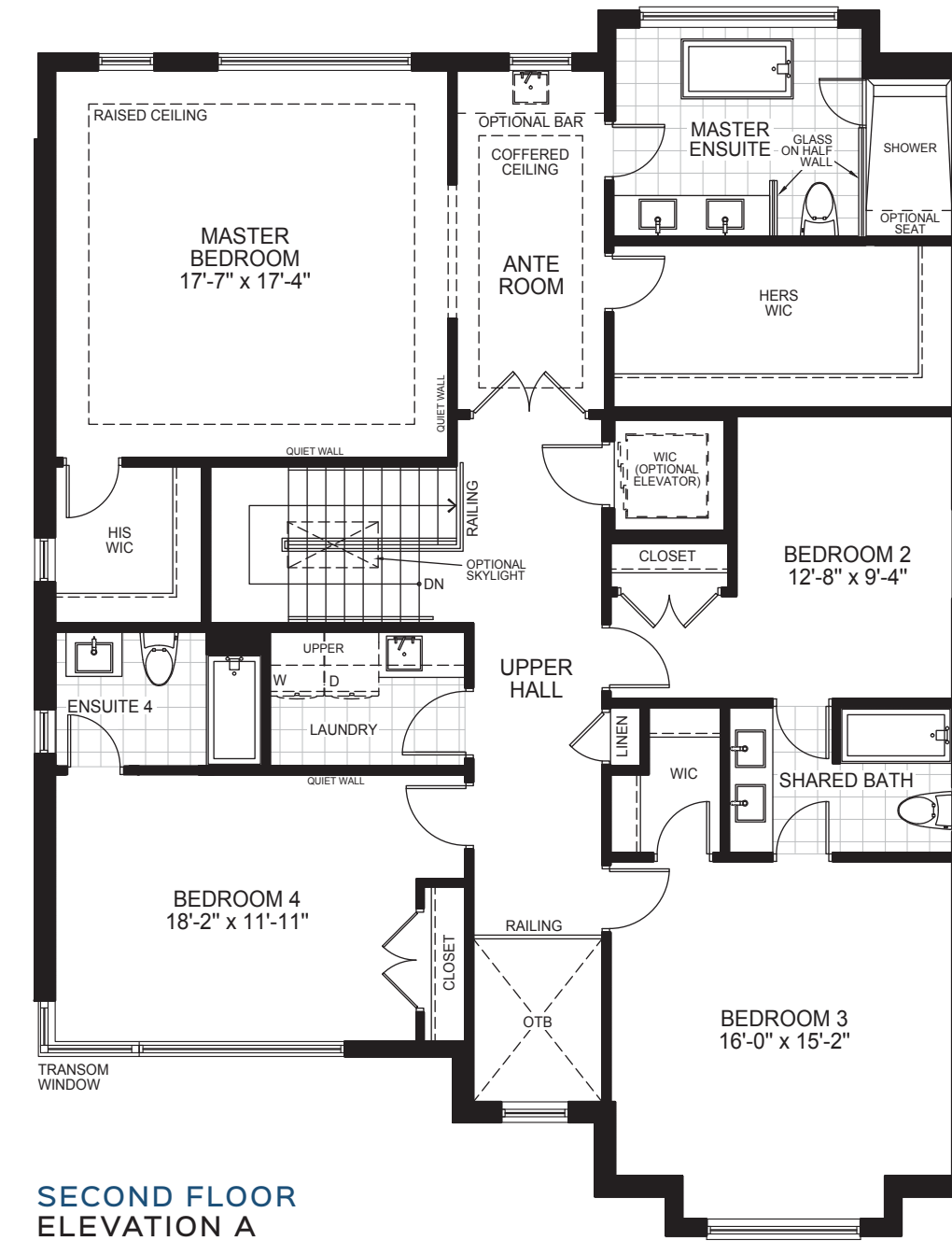
THE LOCKTON

50-2

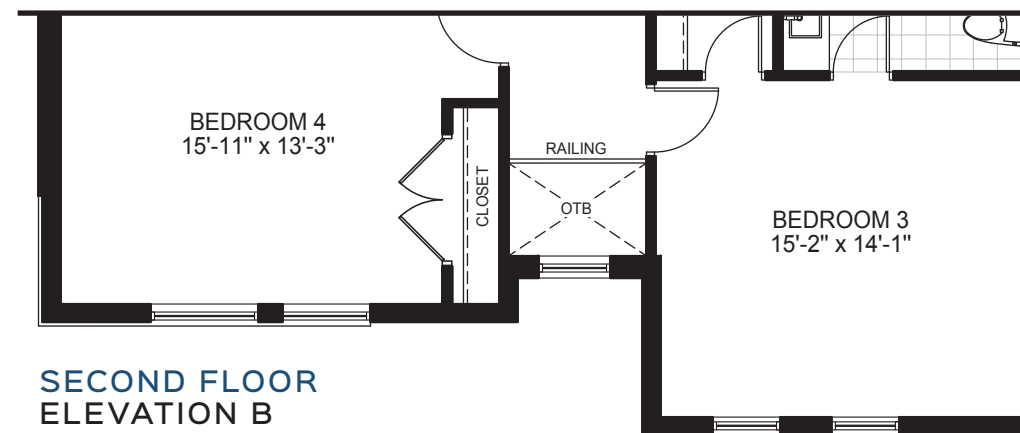
3,818 SQ. FT. - ELEV. A
3,828 SQ. FT. - ELEV. B



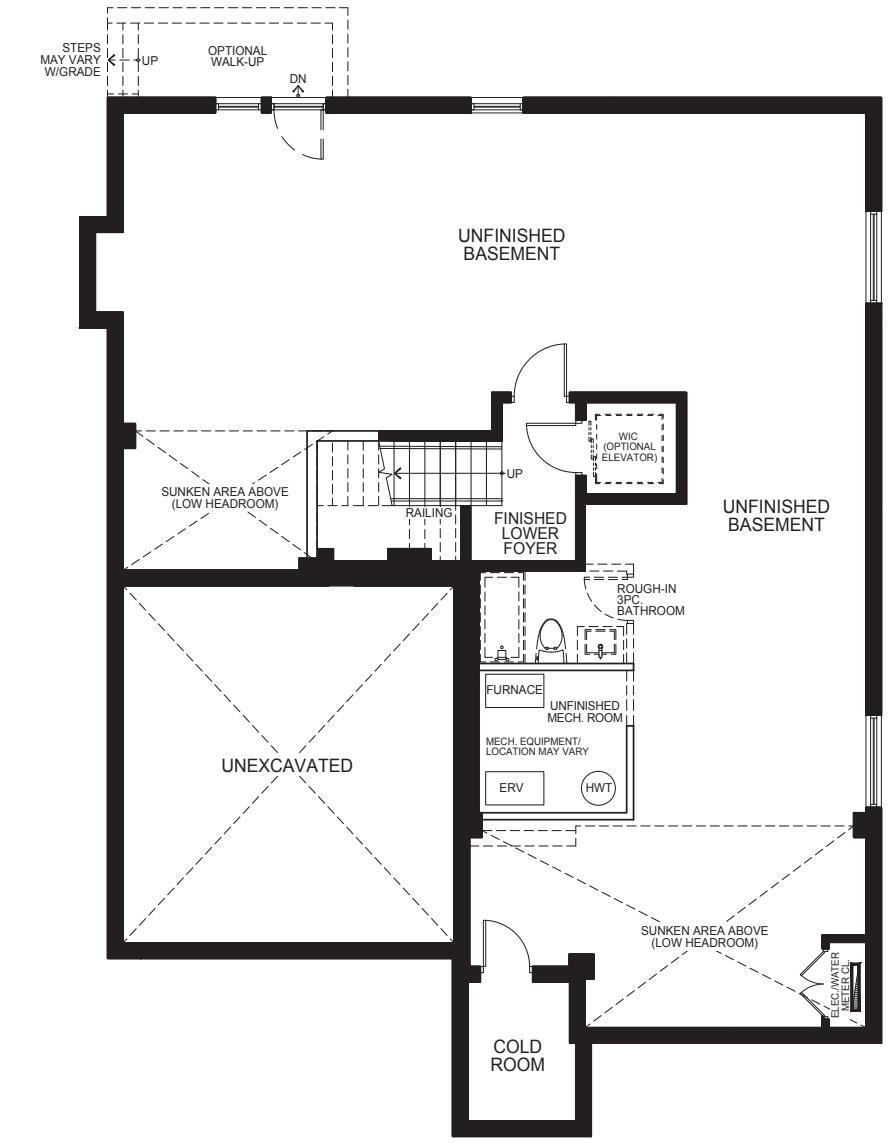
MAIN FLOOR
ELEVATION A & B



SECOND FLOOR
ELEVATION A



SECOND FLOOR
ELEVATION B



BASEMENT FLOOR
ELEVATION A & B

All floor plans, dimensions, specifications, drawings, renderings and elevations are approximate and not to scale. Information subject to architectural review and revision and to change without notice. Renderings are artist's concepts. Measurements adhere to the regulations of the Taron Warranty Corporation's official method for the calculations of floor area. Bulkheads and mechanical systems elements are not shown on this plan. Basement columns, hot water heater and furnace will be placed based on builder's requirements. Number, size, type, colour and location of windows, doors, steps and railings provided may vary per elevation, without notice. Actual useable floor space may vary from the stated floor area. E.&O.E. - D.O.P. 11/2020



THE
ROSSLYN
50-3

4,163 SQ. FT. - ELEV. A



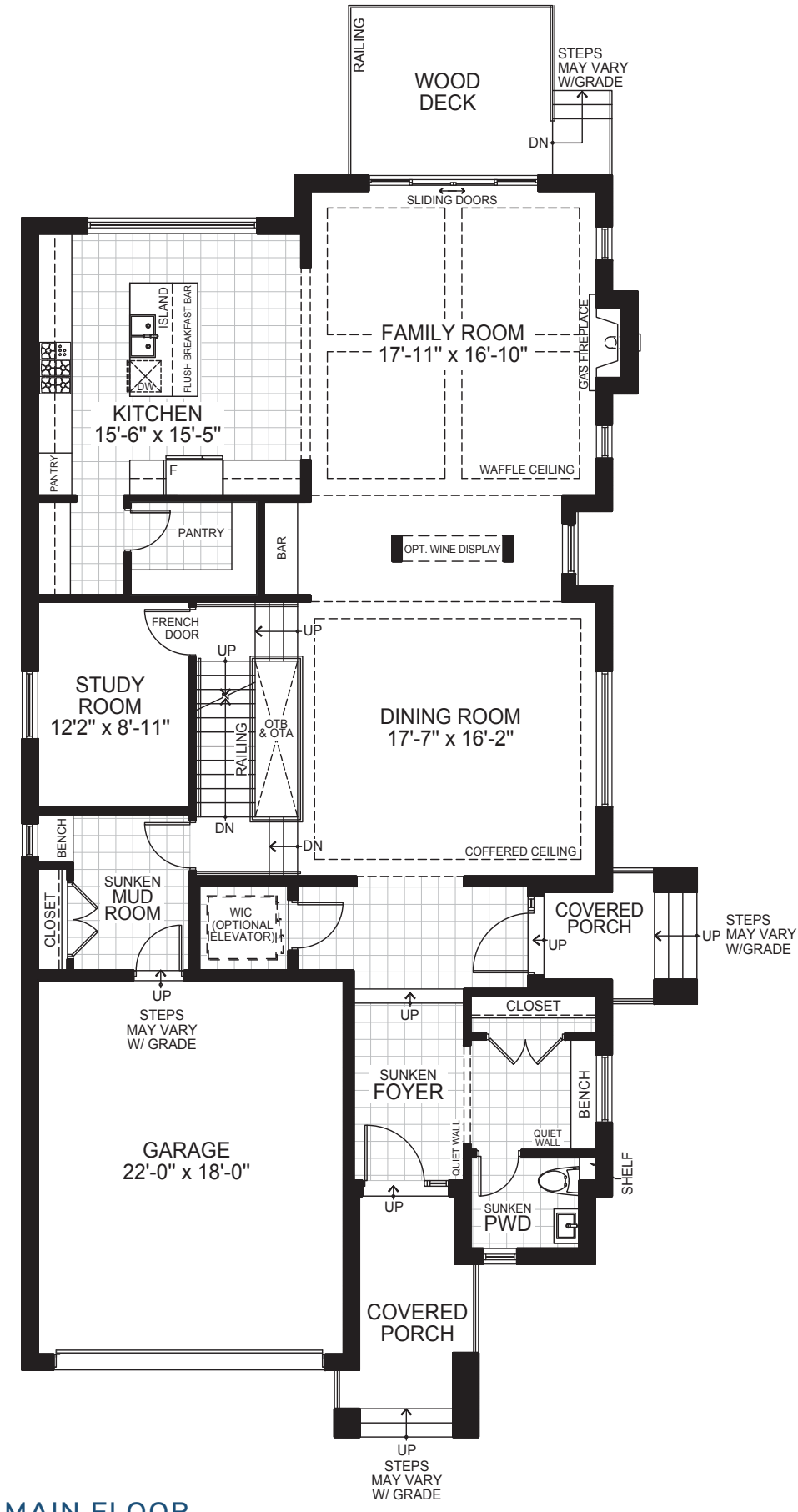
All floor plans, dimensions, specifications, drawings, renderings and elevations are approximate and not to scale. Information subject to architectural review and revision and to change without notice. Renderings are artist's concepts. E. & O. E. D.O.P. 11/2020



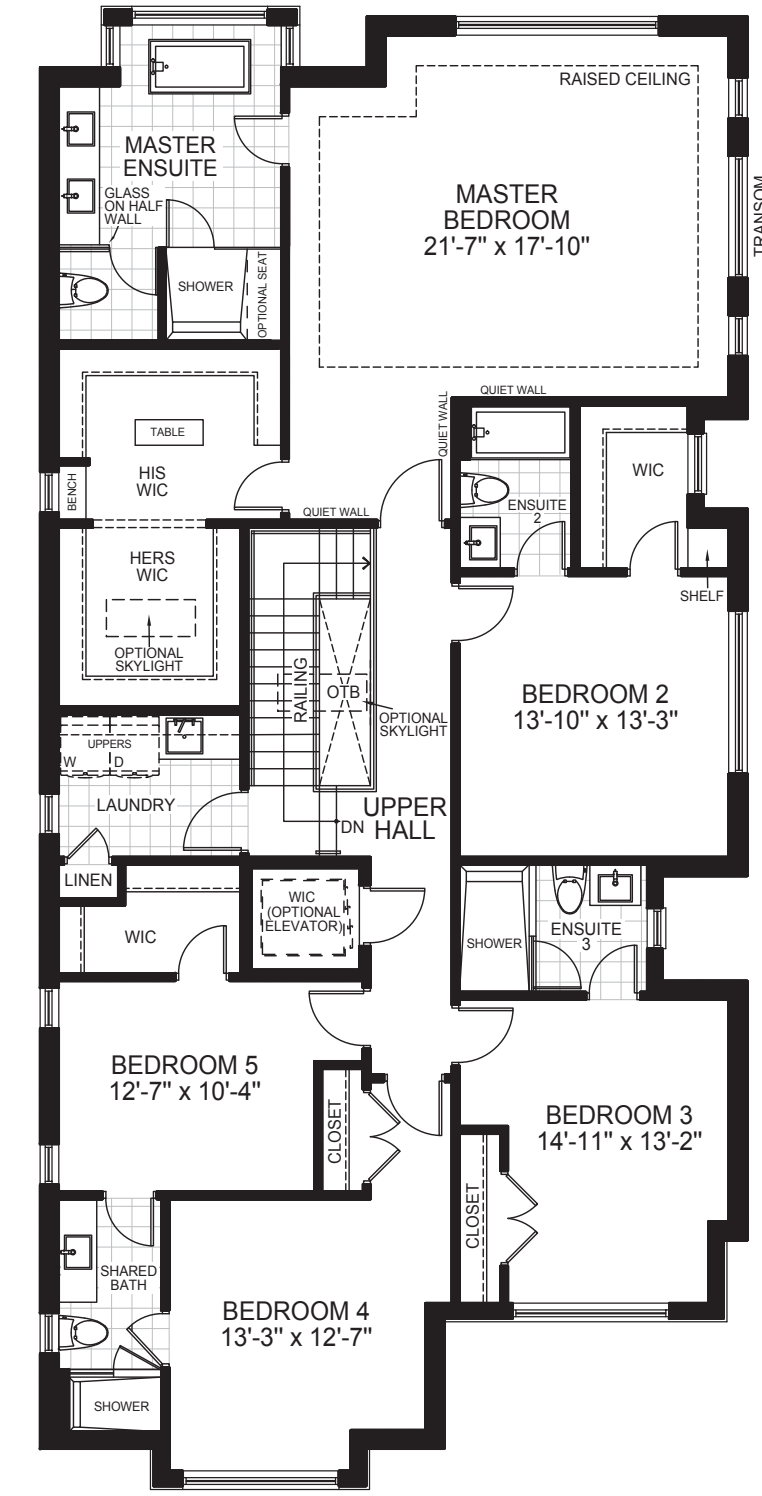
THE ROSSLYN

50-3

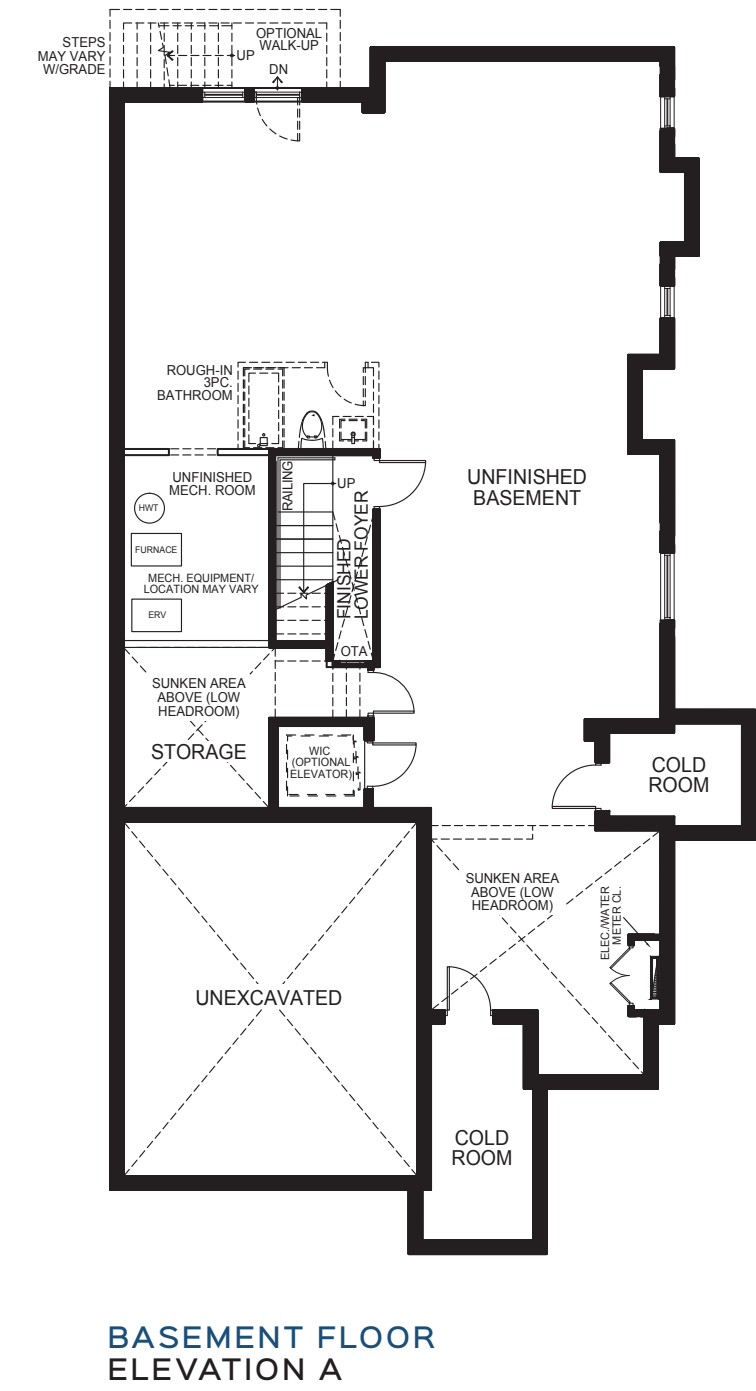
4,163 SQ. FT. - ELEV. A



MAIN FLOOR ELEVATION A



SECOND FLOOR ELEVATION A



BASEMENT FLOOR ELEVATION A

All floor plans, dimensions, specifications, drawings, renderings and elevations are approximate and not to scale. Information subject to architectural review and revision and to change without notice. Renderings are artist's concepts. Measurements adhere to the regulations of the Taron Warranty Corporation's official method for the calculations of floor area. Bulkheads and mechanical systems elements are not shown on this plan. Basement columns, hot water heater and furnace will be placed based on builder's requirements. Number, size, type, colour and location of windows, doors, steps and railings provided may vary per elevation, without notice. Actual useable floor space may vary from the stated floor area. E.&O.E. - D.O.P. 11/2020



THE
PROVIDENCE
50-4

3,780 SQ. FT. - ELEV. A



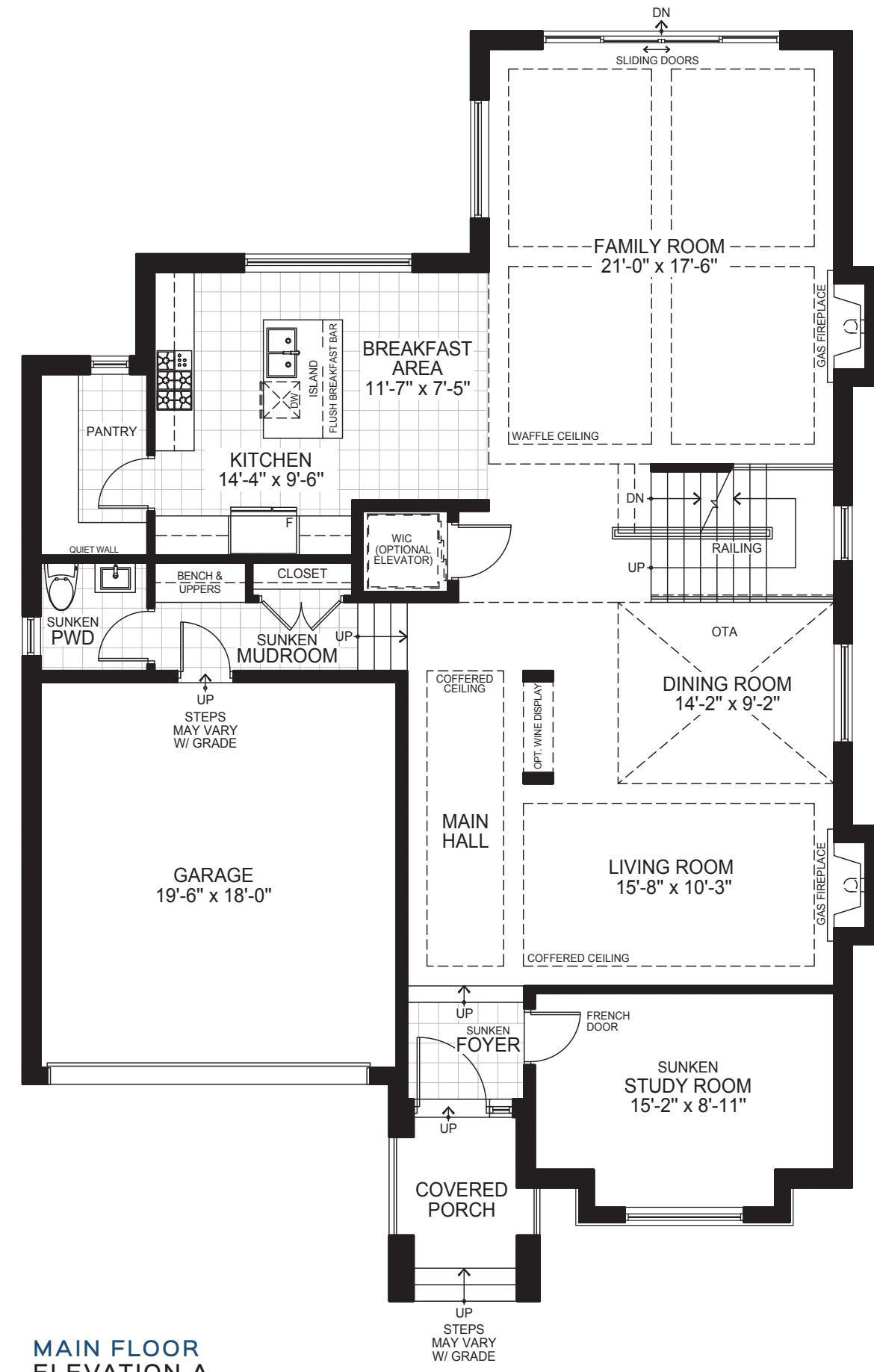
All floor plans, dimensions, specifications, drawings, renderings and elevations are approximate and not to scale. Information subject to architectural review and revision and to change without notice. Renderings are artist's concepts. E. & O. E. D.O.P. 11/2020



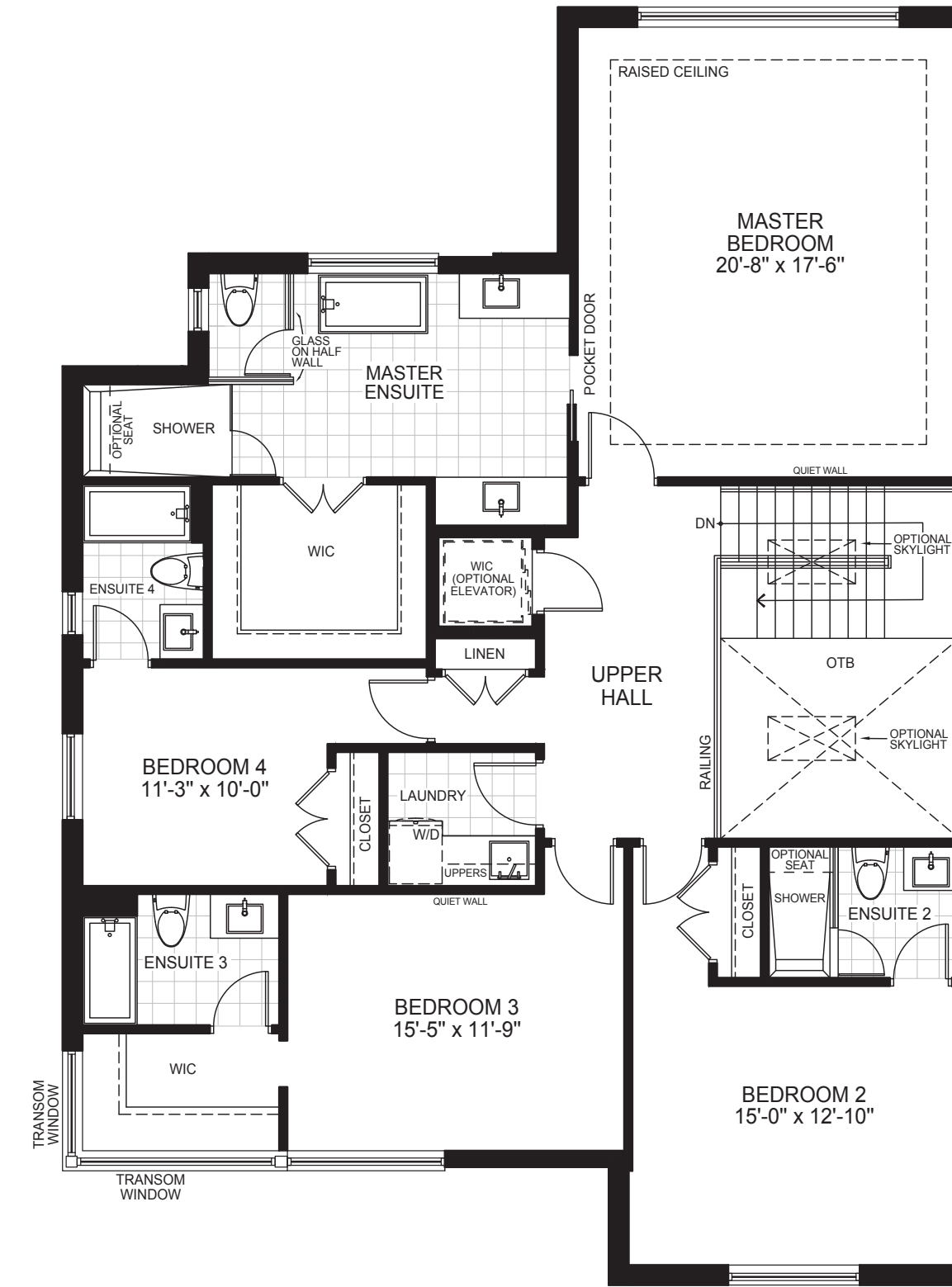
THE PROVIDENCE

50-4

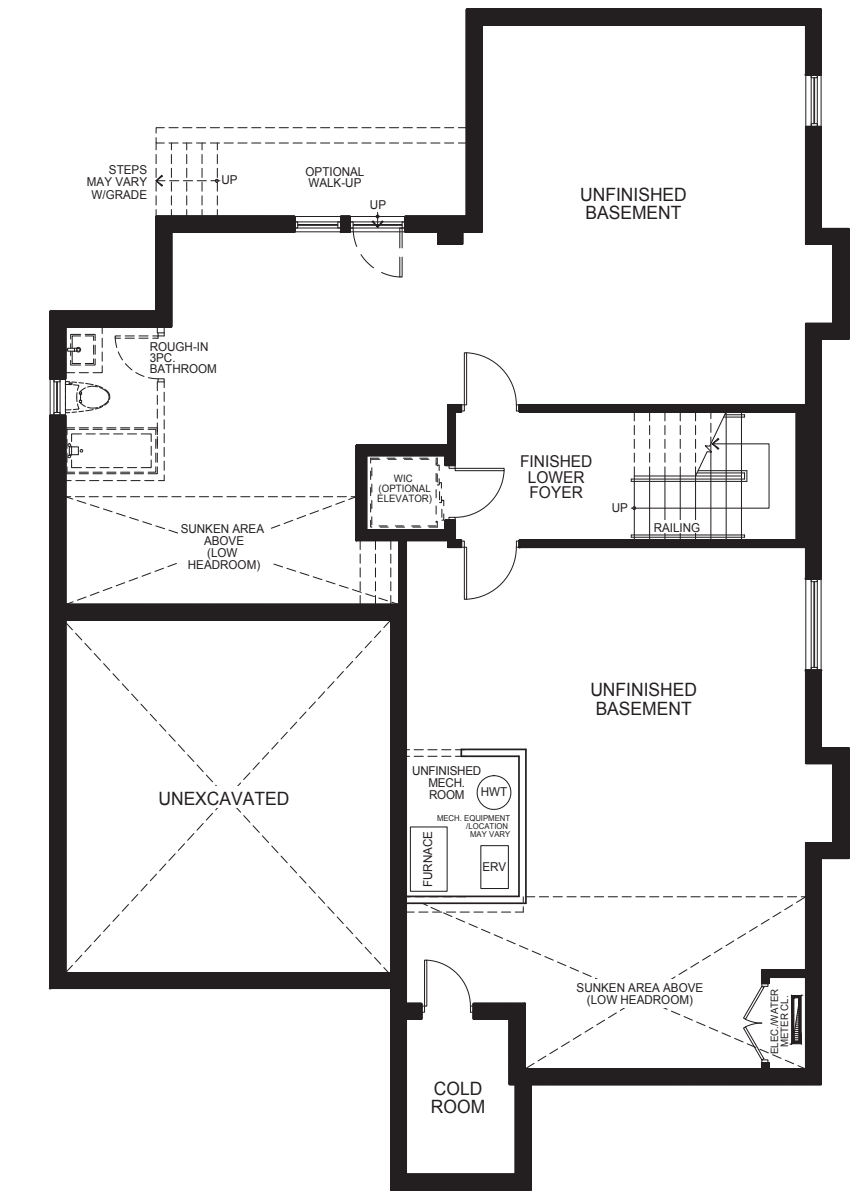
3,780 SQ. FT. - ELEV. A



MAIN FLOOR
ELEVATION A



SECOND FLOOR
ELEVATION A



BASEMENT FLOOR
ELEVATION A

All floor plans, dimensions, specifications, drawings, renderings and elevations are approximate and not to scale. Information subject to architectural review and revision and to change without notice. Renderings are artist's concepts. Measurements adhere to the regulations of the Tarion Warranty Corporation's official method for the calculations of floor area. Bulkheads and mechanical systems elements are not shown on this plan. Basement columns, hot water heater and furnace will be placed based on builder's requirements. Number, size, type, colour and location of windows, doors, steps and railings provided may vary per elevation, without notice. Actual useable floor space may vary from the stated floor area. E.&O.E. - D.O.P. 11/2020



THE
LUXMORE
50-5

3,790 SQ. FT. - ELEV. A



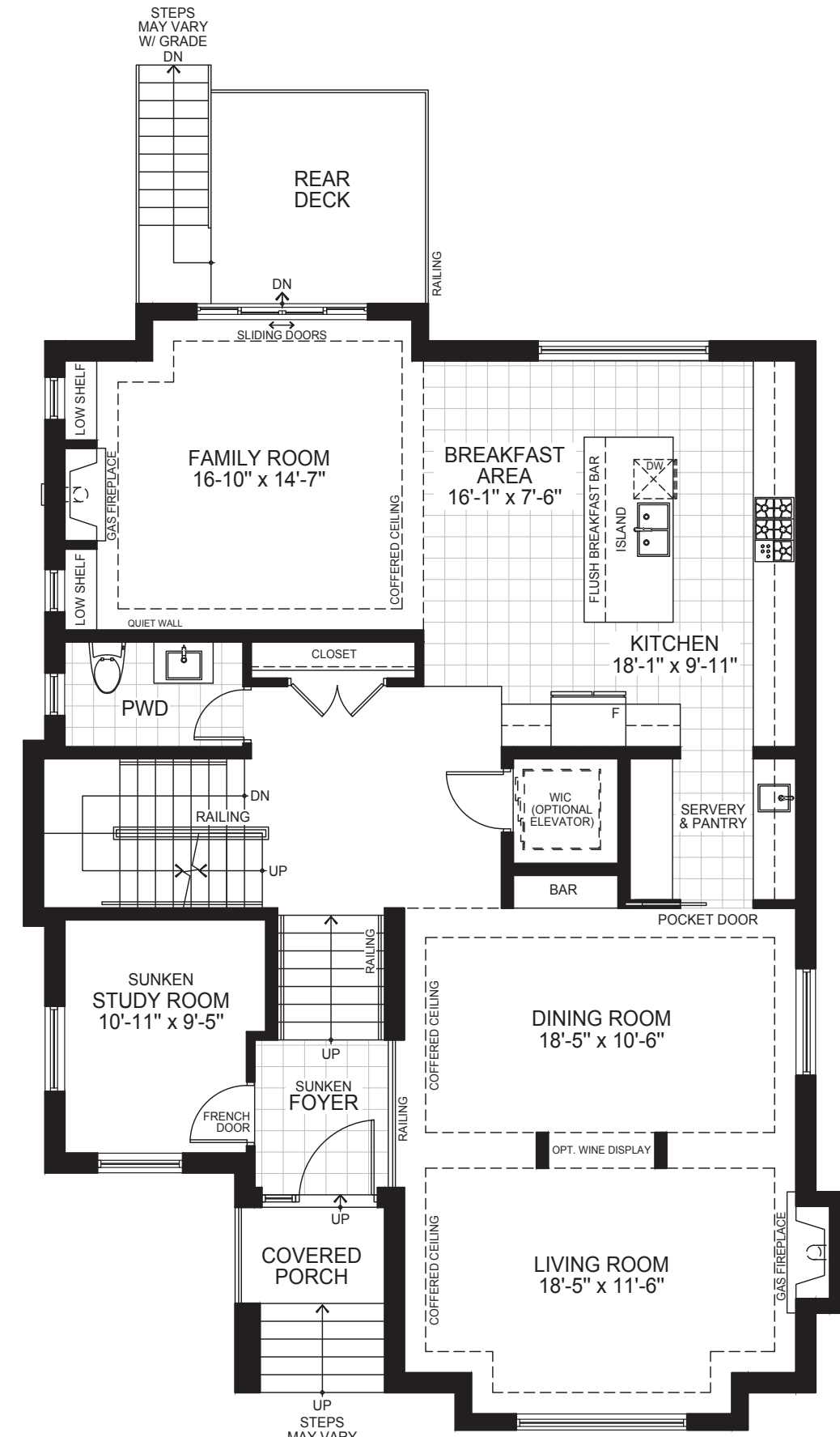
All floor plans, dimensions, specifications, drawings, renderings and elevations are approximate and not to scale. Information subject to architectural review and revision and to change without notice. Renderings are artist's concepts. E. & O. E. D.O.P. 11/2020



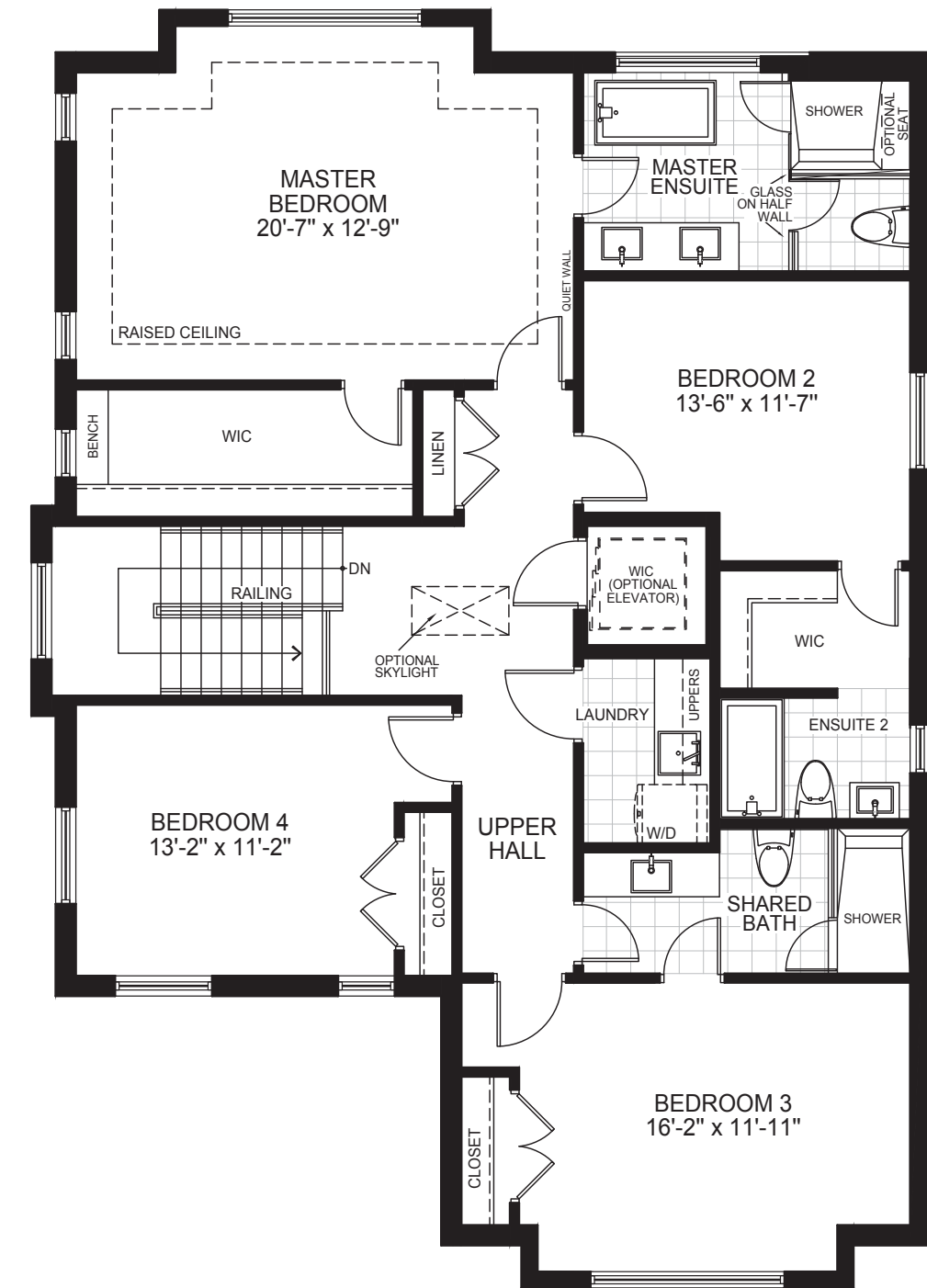
THE LUXMORE

50-5

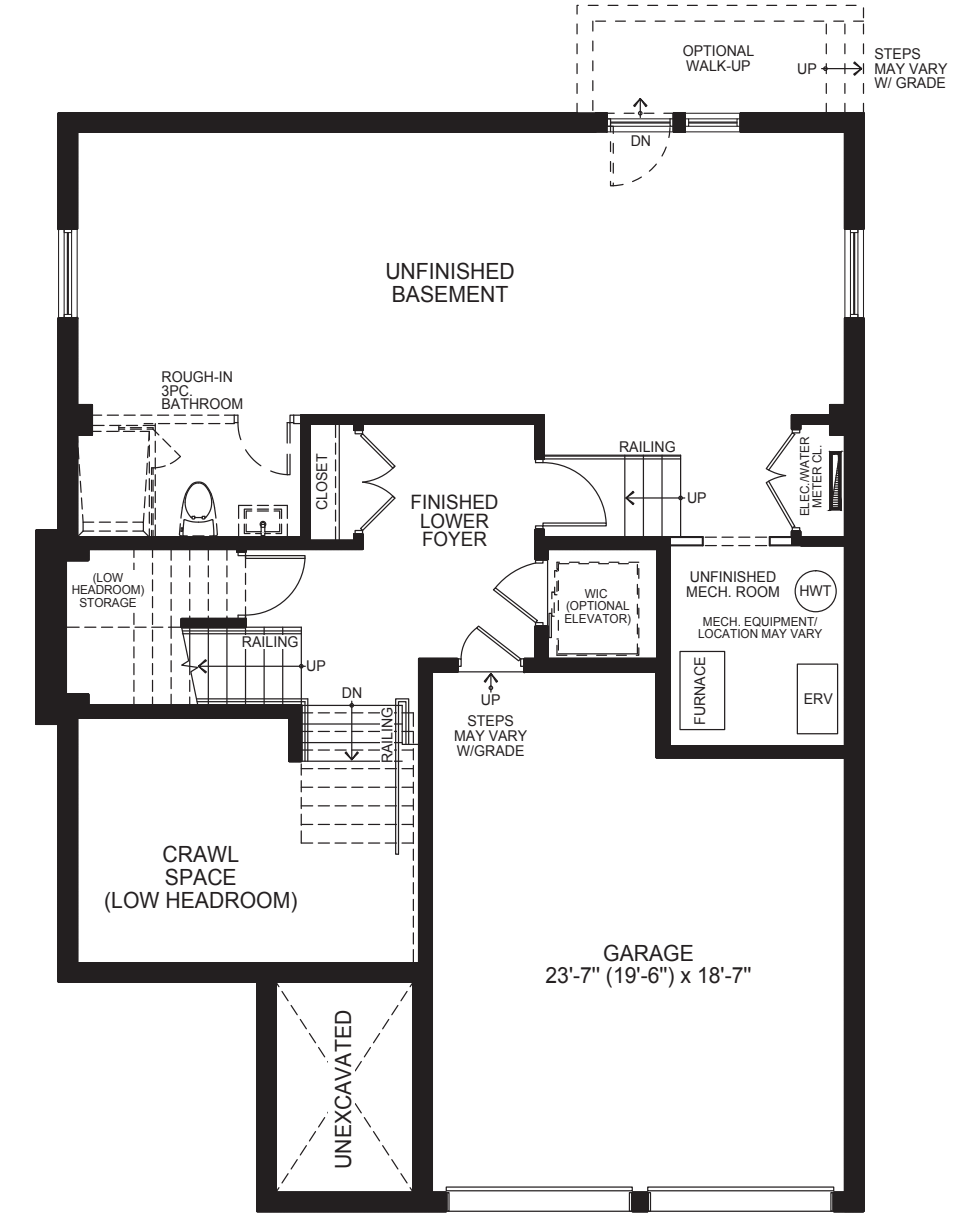
3,790 SQ. FT. - ELEV. A



MAIN FLOOR ELEVATION A



SECOND FLOOR ELEVATION A



BASEMENT FLOOR ELEVATION A

All floor plans, dimensions, specifications, drawings, renderings and elevations are approximate and not to scale. Information subject to architectural review and revision and to change without notice. Renderings are artist's concepts. Measurements adhere to the regulations of the Taron Warranty Corporation's official method for the calculations of floor area. Bulkheads and mechanical systems elements are not shown on this plan. Basement columns, hot water heater and furnace will be placed based on builder's requirements. Number, size, type, colour and location of windows, doors, steps and railings provided may vary per elevation, without notice. Actual useable floor space may vary from the stated floor area. E.&O.E. - D.O.P. 11/2020

ELEVATION A



ELEVATION B



THE
KINGWOOD
55-1

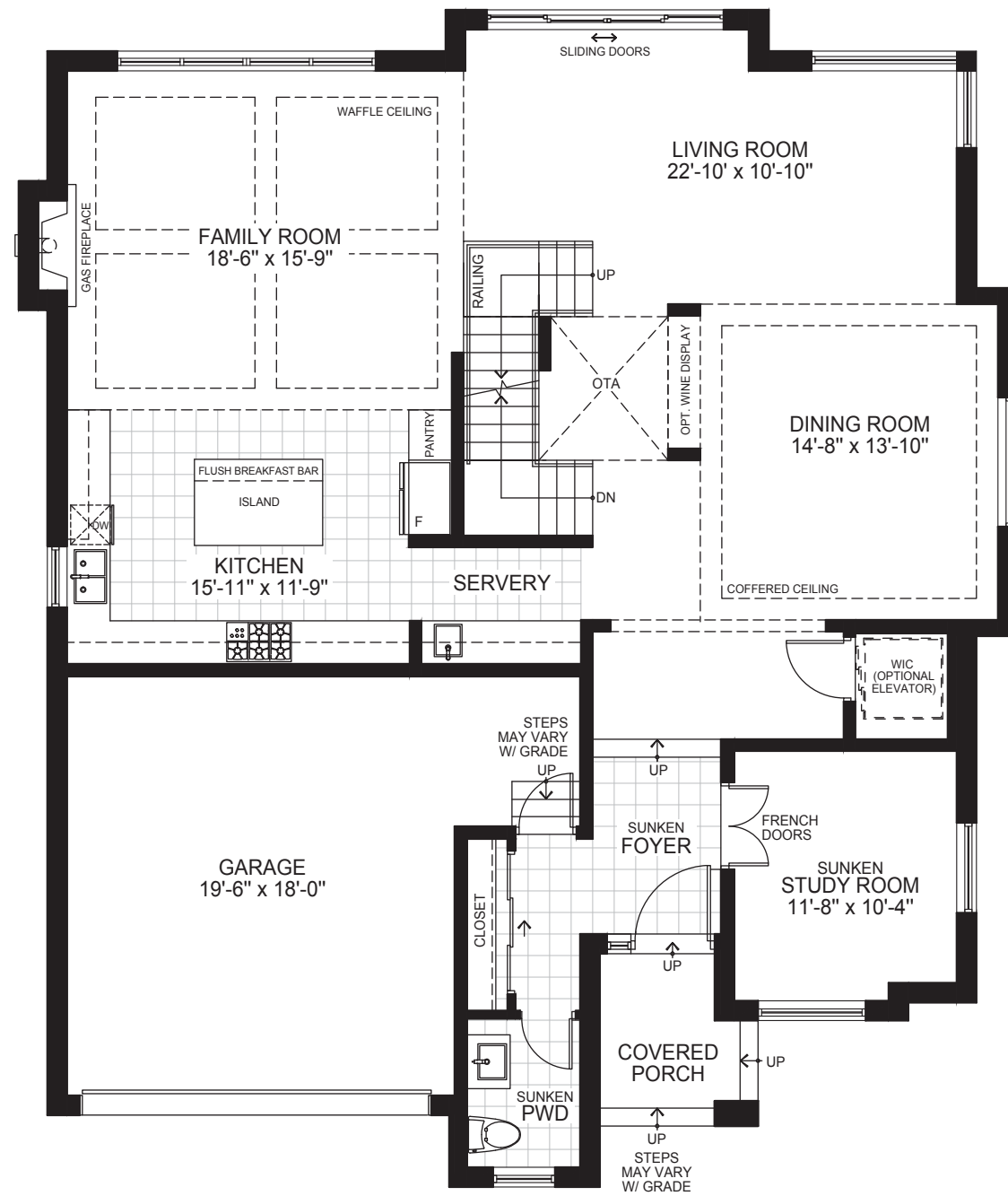
3,767 SQ. FT.
ELEV. A & B



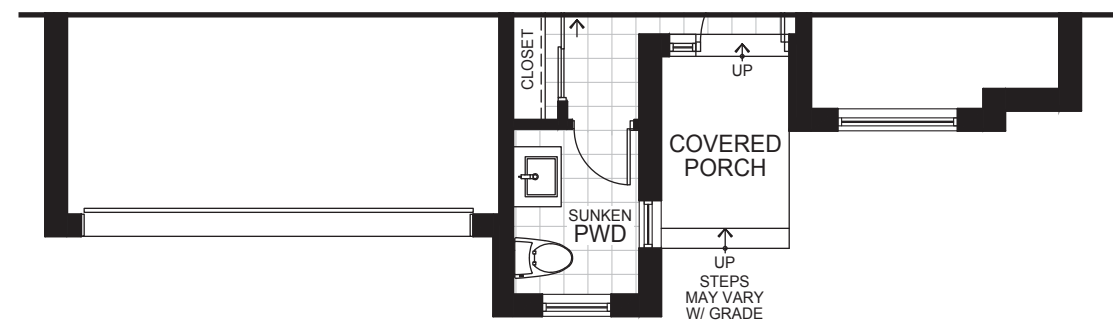
THE KINGWOOD

55-1

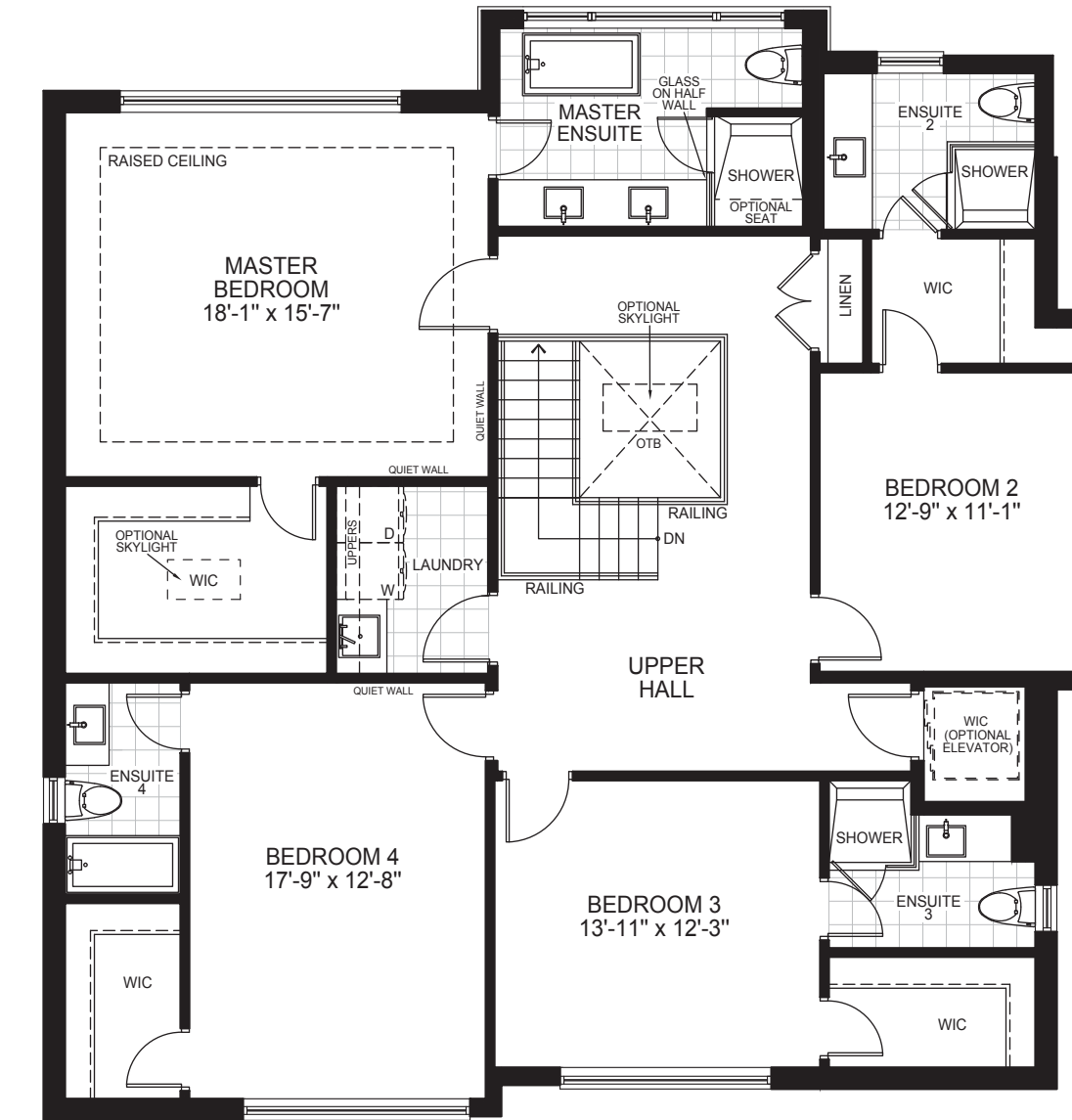
3,767 SQ. FT. - ELEV. A & B



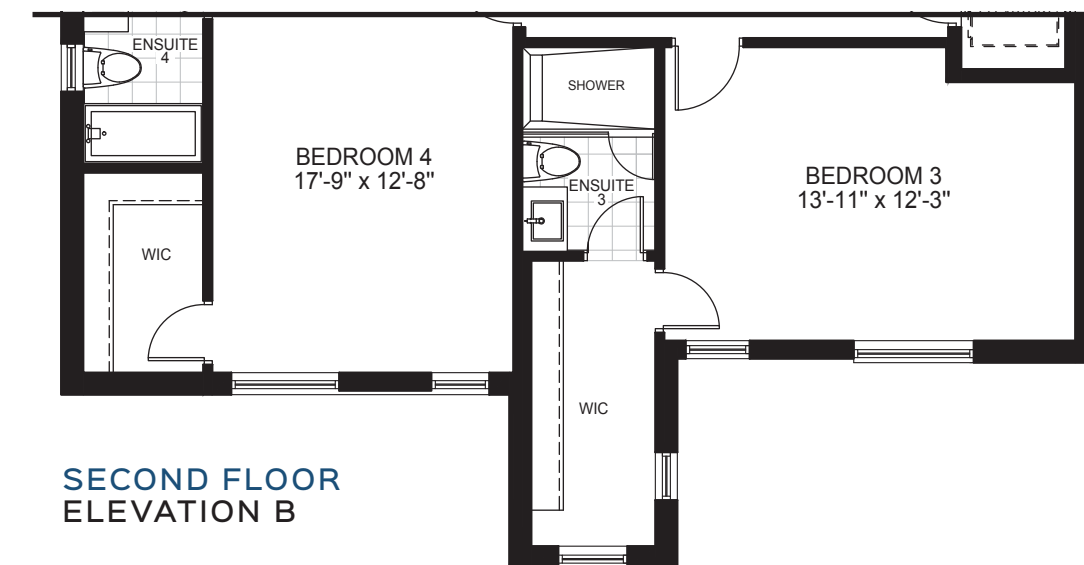
MAIN FLOOR ELEVATION A



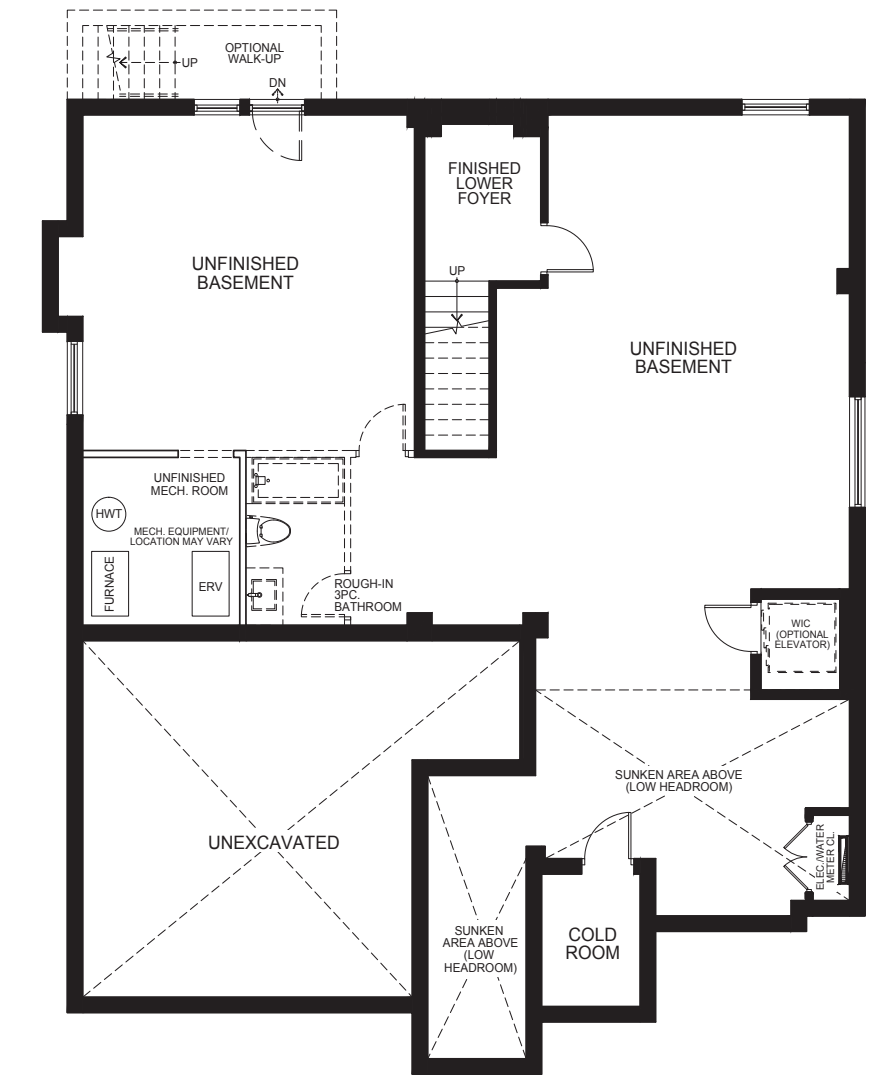
MAIN FLOOR ELEVATION B



SECOND FLOOR ELEVATION A



SECOND FLOOR ELEVATION B



BASEMENT FLOOR ELEVATION A & B

All floor plans, dimensions, specifications, drawings, renderings and elevations are approximate and not to scale. Information subject to architectural review and revision and to change without notice. Renderings are artist's concepts. Measurements adhere to the regulations of the Tarion Warranty Corporation's official method for the calculations of floor area. Bulkheads and mechanical systems elements are not shown on this plan. Basement columns, hot water heater and furnace will be placed based on builder's requirements. Number, size, type, colour and location of windows, doors, steps and railings provided may vary per elevation, without notice. Actual useable floor space may vary from the stated floor area. E.&O.E. - D.O.P. 11/2020



THE
RICHFORD
60-1

3,698 SQ. FT. - ELEV. A



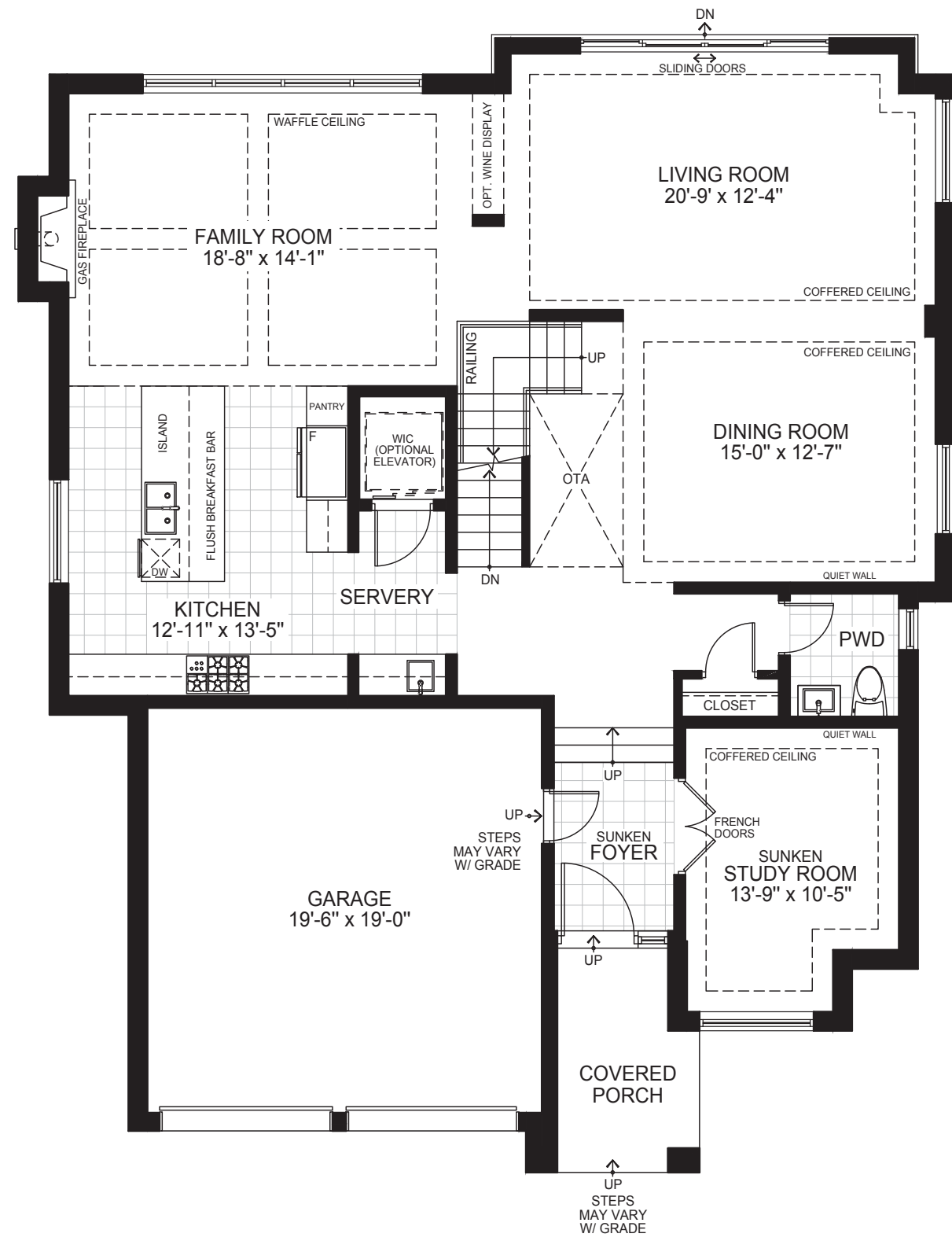
All floor plans, dimensions, specifications, drawings, renderings and elevations are approximate and not to scale. Information subject to architectural review and revision and to change without notice. Renderings are artist's concepts. E. & O. E. D.O.P. 11/2020



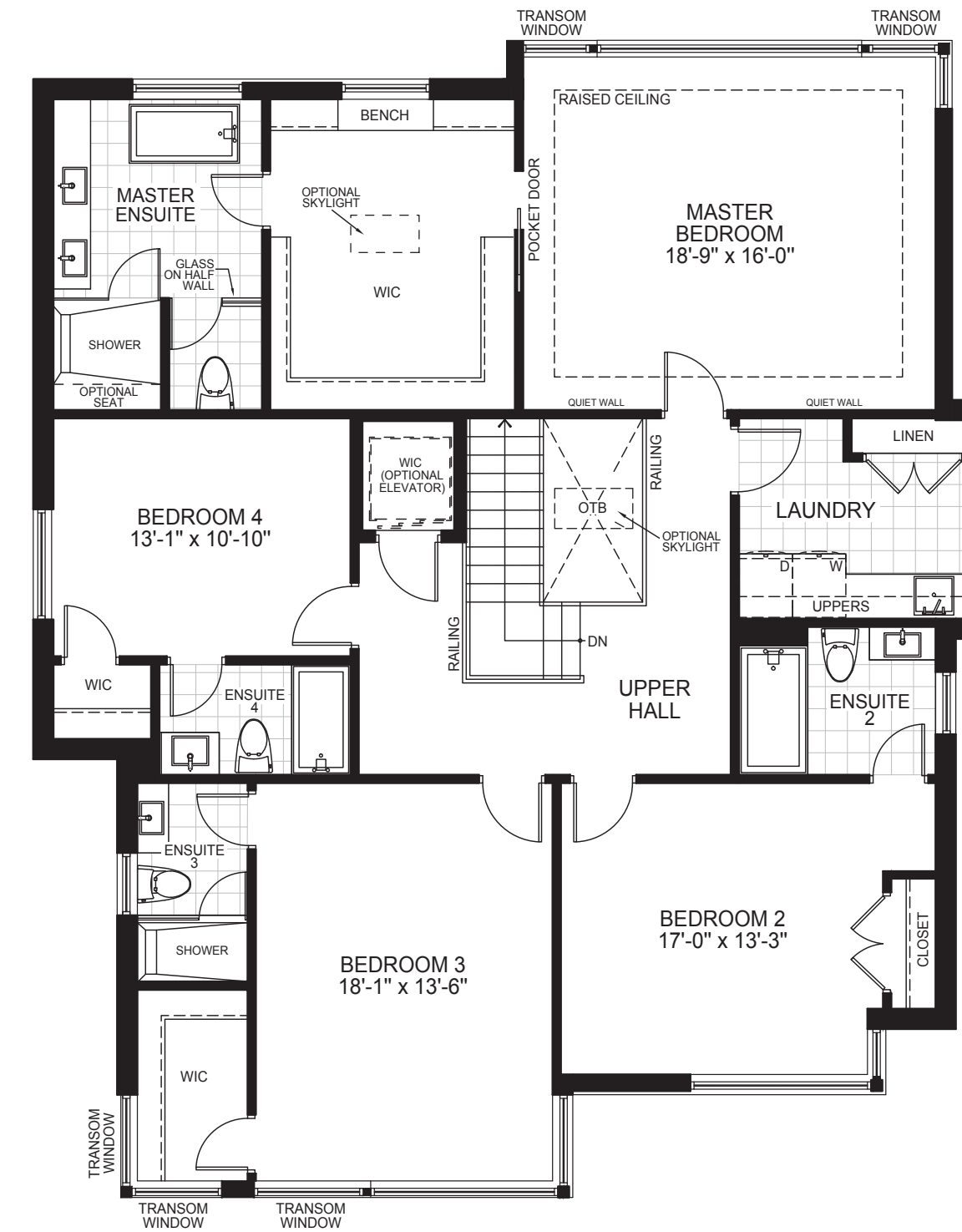
THE RICHFORD

60-1

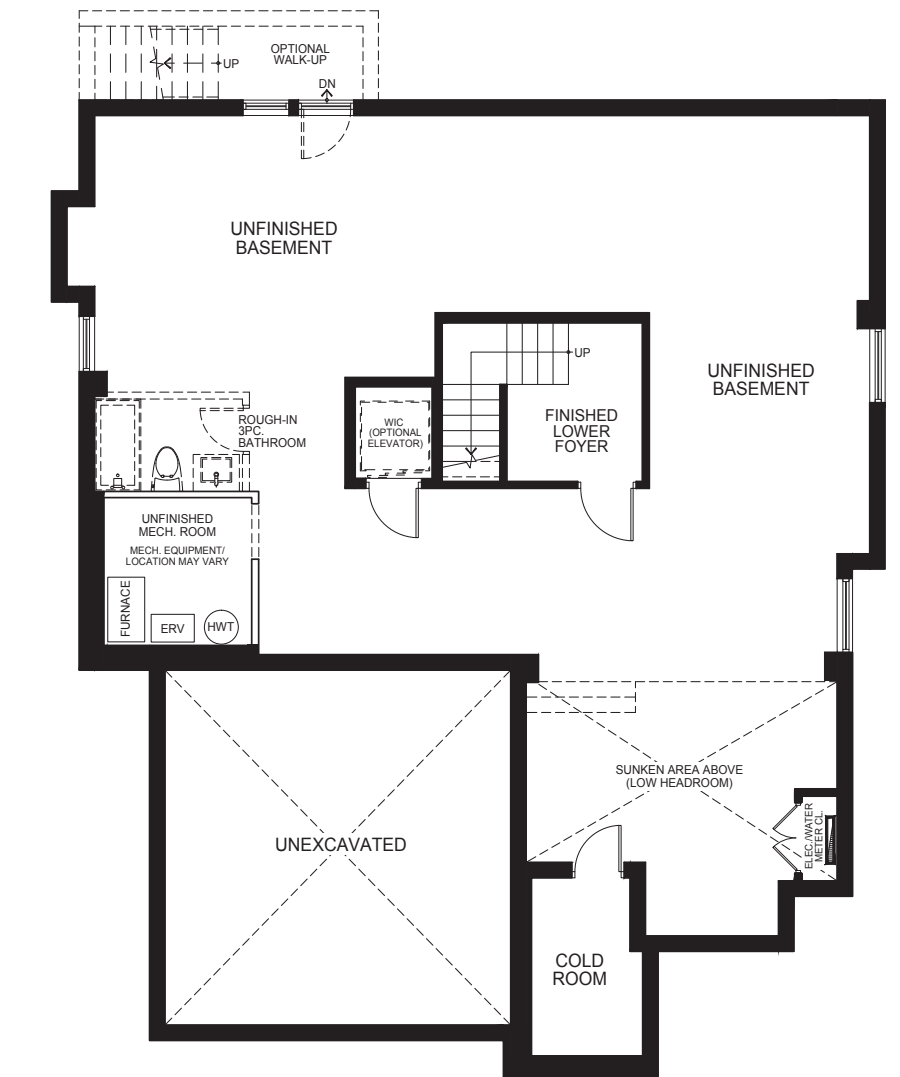
3,698 SQ. FT. - ELEV. A



MAIN FLOOR
ELEVATION A



SECOND FLOOR
ELEVATION A



BASEMENT FLOOR
ELEVATION A

All floor plans, dimensions, specifications, drawings, renderings and elevations are approximate and not to scale. Information subject to architectural review and revision and to change without notice. Renderings are artist's concepts. Measurements adhere to the regulations of the Tarion Warranty Corporation's official method for the calculations of floor area. Bulkheads and mechanical systems elements are not shown on this plan. Basement columns, hot water heater and furnace will be placed based on builder's requirements. Number, size, type, colour and location of windows, doors, steps and railings provided may vary per elevation, without notice. Actual useable floor space may vary from the stated floor area. E.&O.E. - D.O.P. 11/2020



THE
ROYAL
90-1

5,073 SQ. FT. - ELEV. A



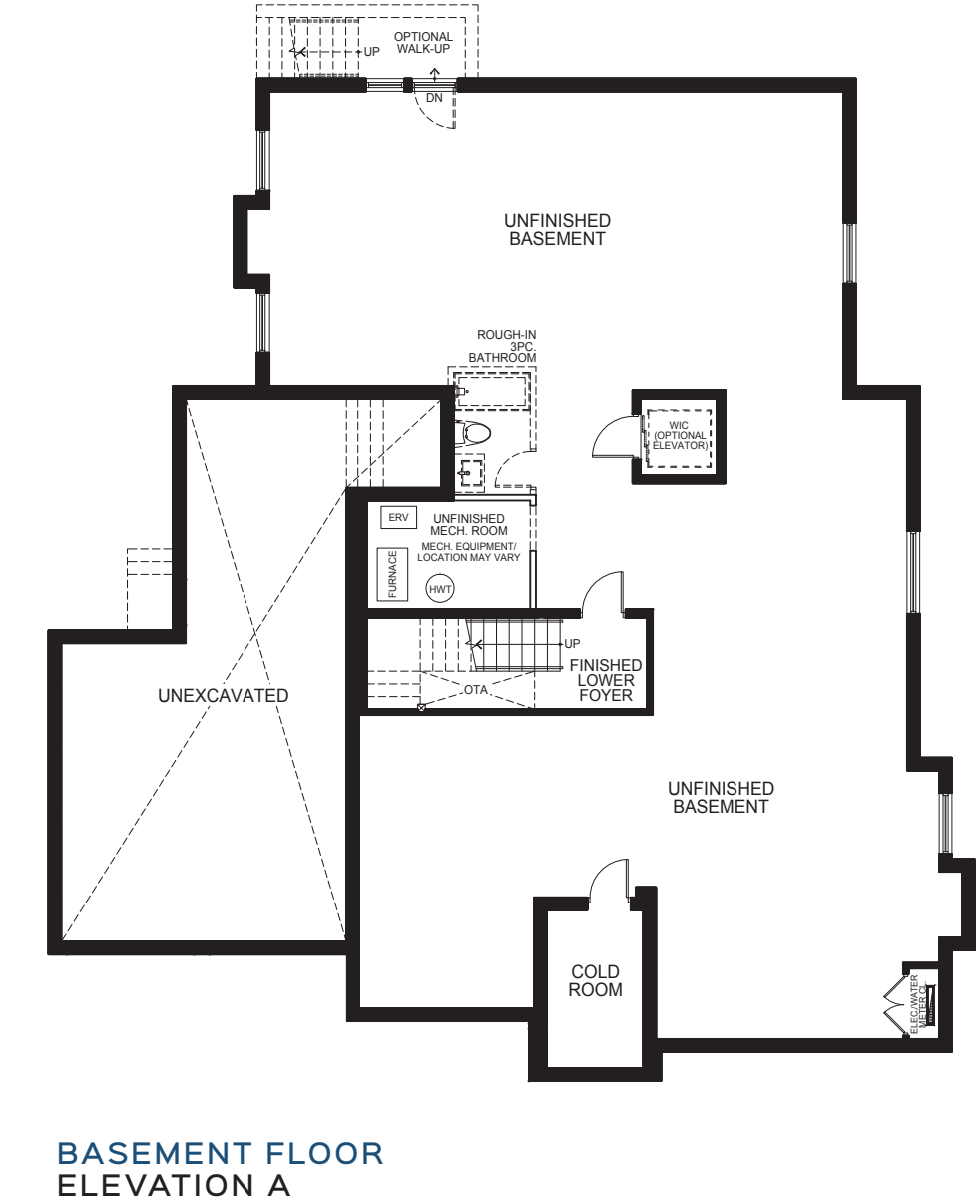
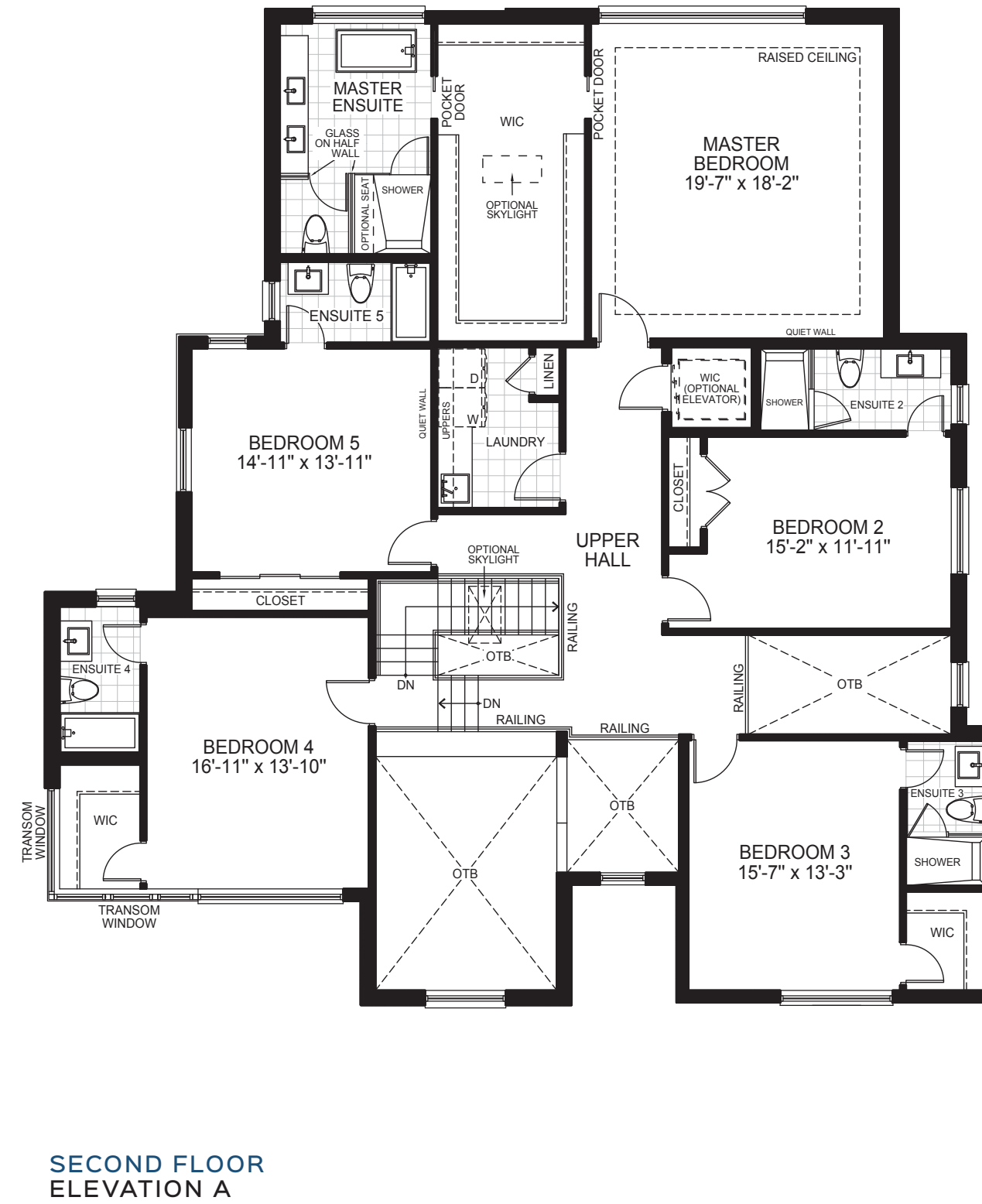
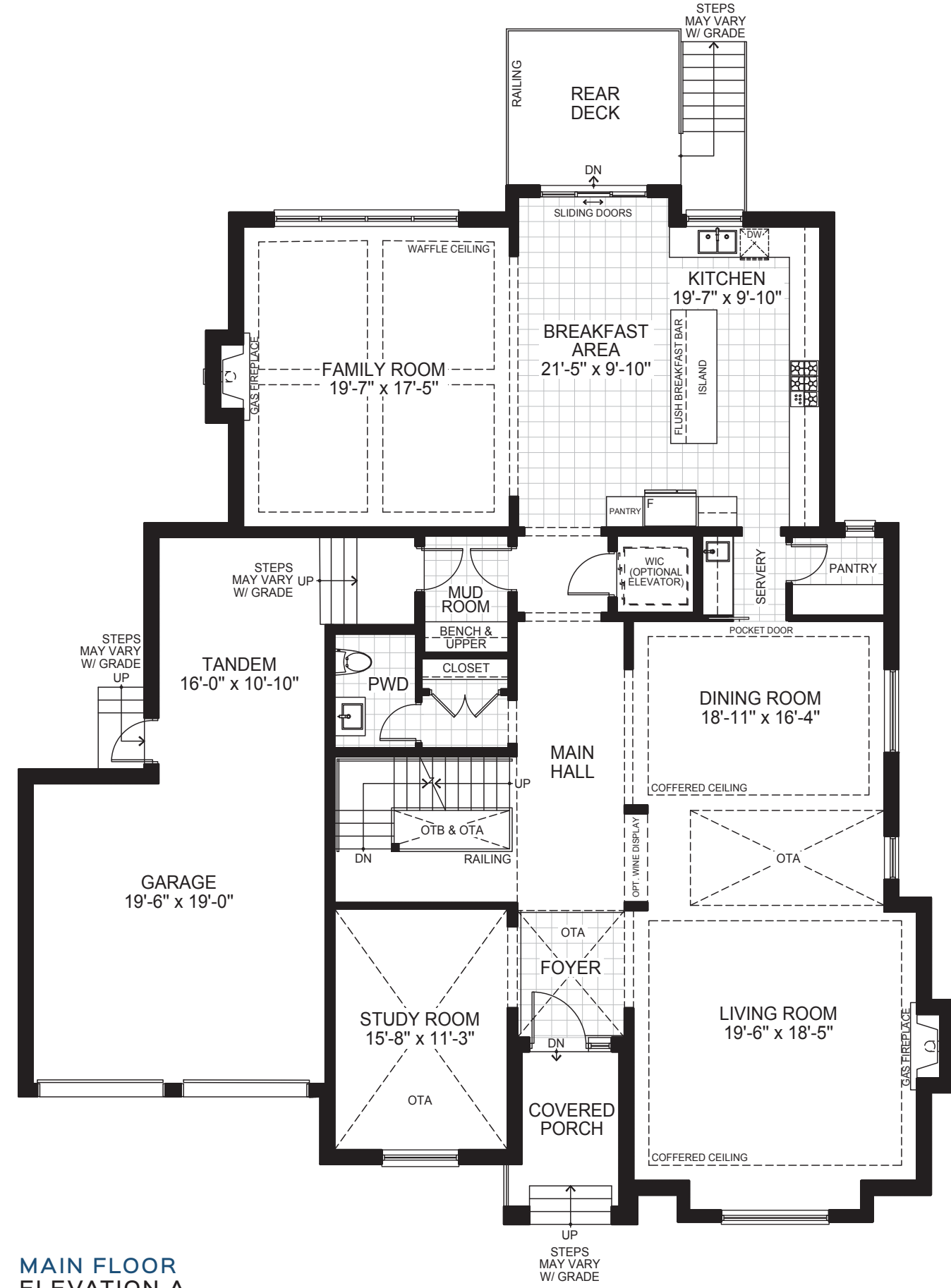
All floor plans, dimensions, specifications, drawings, renderings and elevations are approximate and not to scale. Information subject to architectural review and revision and to change without notice. Renderings are artist's concepts. E. & O. E. D.O.P. 11/2020



THE ROYAL

90-1

5,073 SQ. FT. - ELEV. A



All floor plans, dimensions, specifications, drawings, renderings and elevations are approximate and not to scale. Information subject to architectural review and revision and to change without notice. Renderings are artist's concepts. Measurements adhere to the regulations of the Tarion Warranty Corporation's official method for the calculations of floor area. Bulkheads and mechanical systems elements are not shown on this plan. Basement columns, hot water heater and furnace will be placed based on builder's requirements. Number, size, type, colour and location of windows, doors, steps and railings provided may vary per elevation, without notice. Actual useable floor space may vary from the stated floor area. E.&O.E. - D.O.P. 11/2020