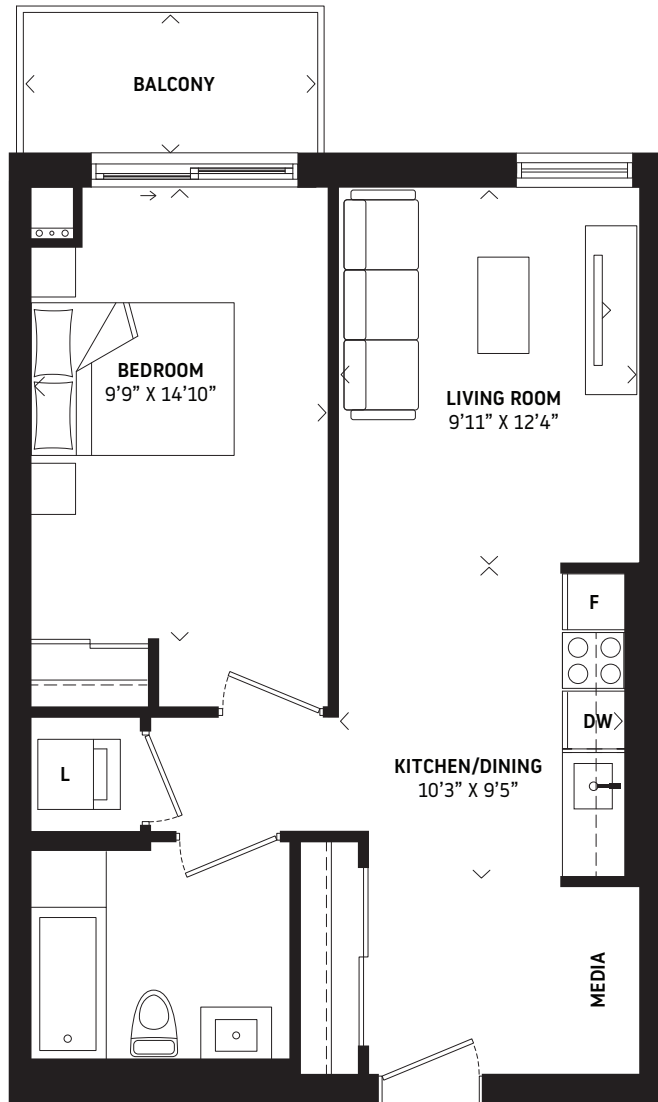


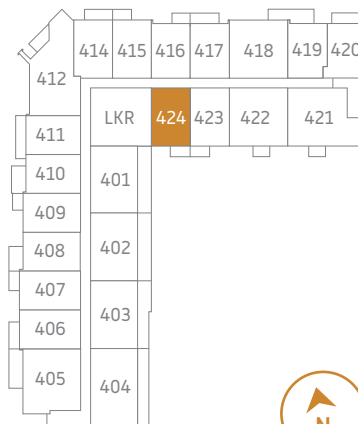
The Meridian

1 Bedroom + Media | 651 sq.ft. (interior) | 45 sq.ft. (exterior)

696 total sq.ft



FLOOR 4

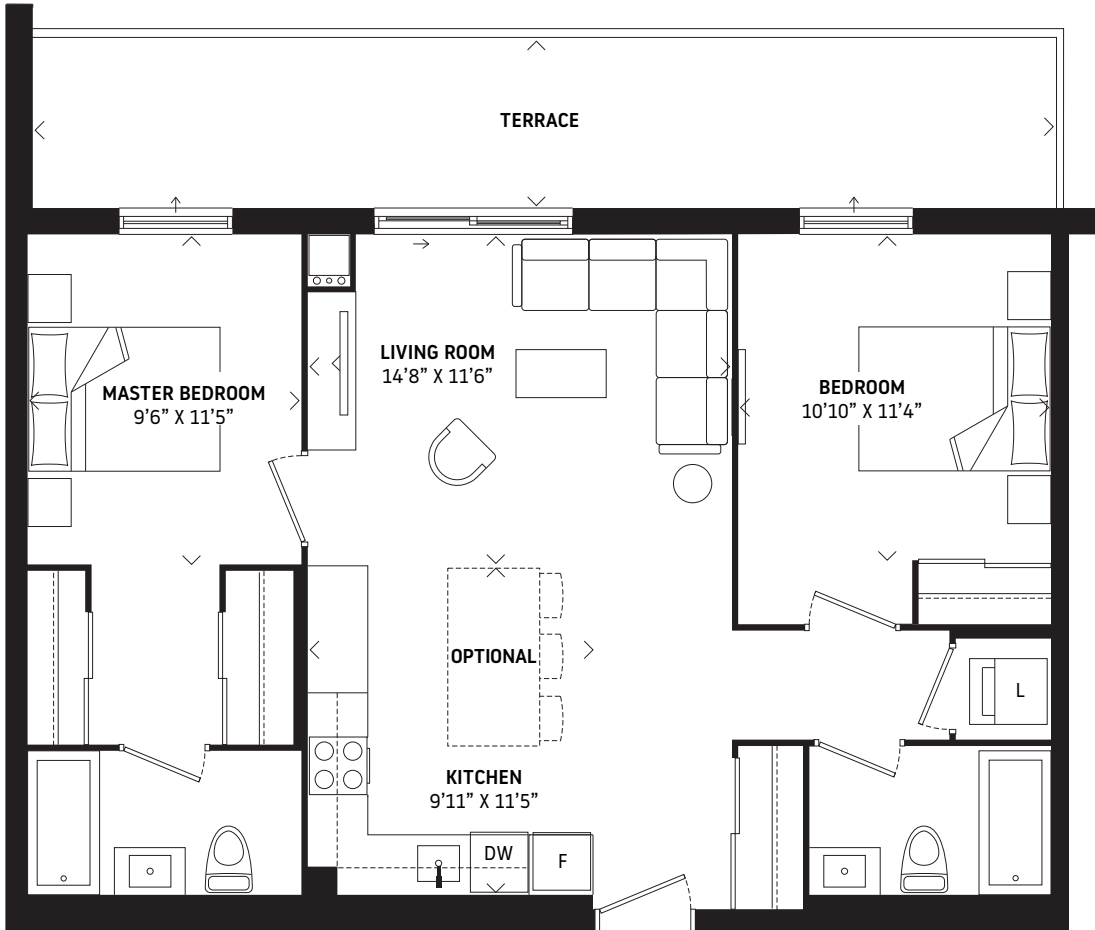


ONE URBAN

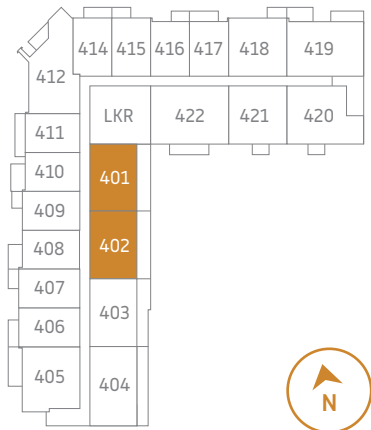
Materials, specifications and floorplans are subject to change without notice. All floorplans have approximate dimensions. Actual usable floor space may vary from the stated floor area. E & OE. Balcony depths vary depending on floor level locations.

The Blake

2 Bedroom | 908 sq.ft. (interior) | 208 sq.ft. (exterior)
1,110 total sq.ft

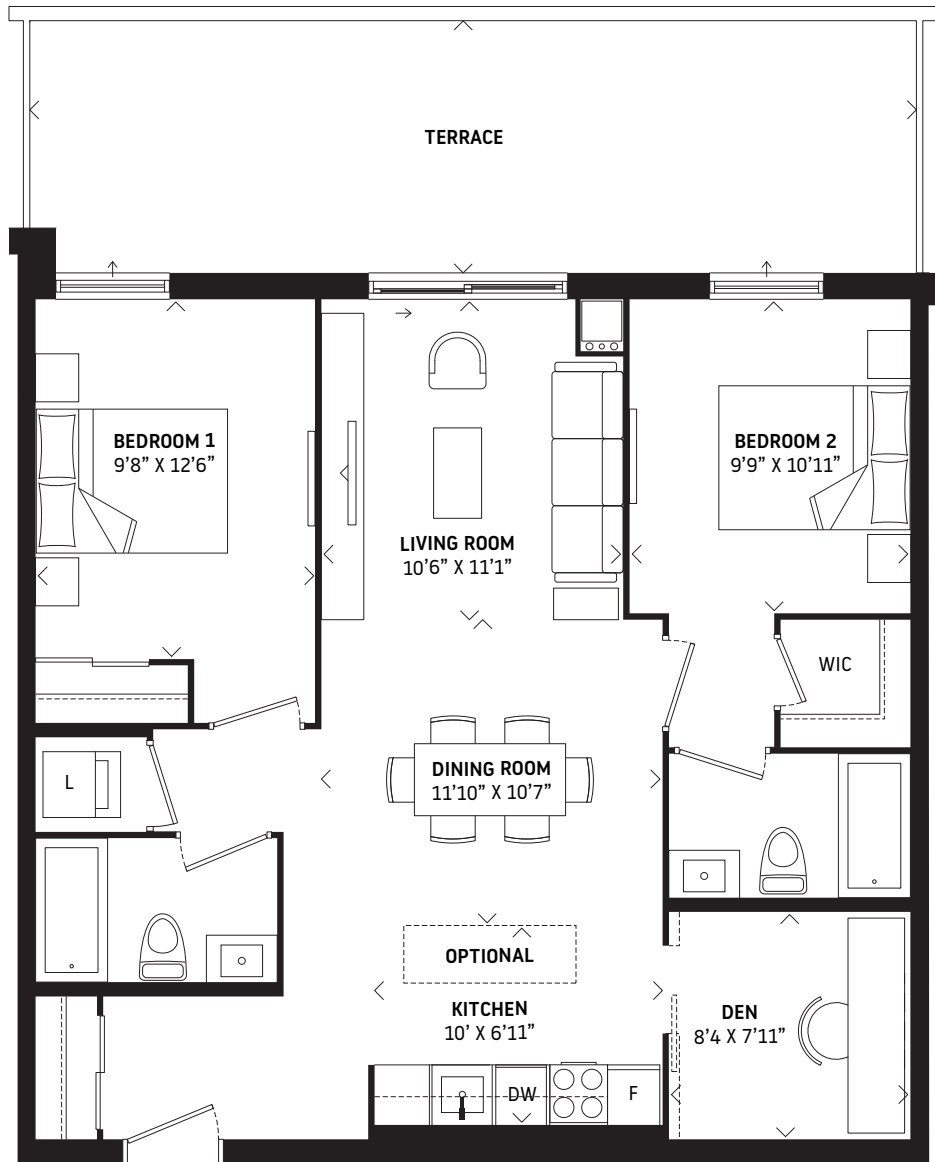


FLOOR 4

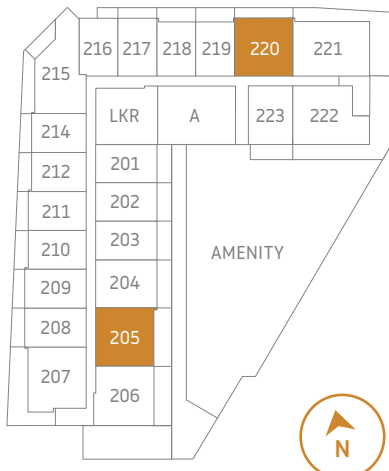


The Owen

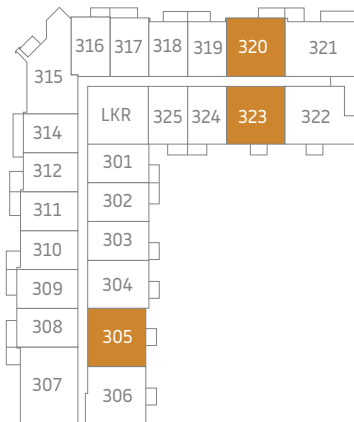
2 Bedroom + Den | 960 sq.ft. (interior) | 268 sq.ft. (exterior)
 1,228 total sq.ft | Floor 2



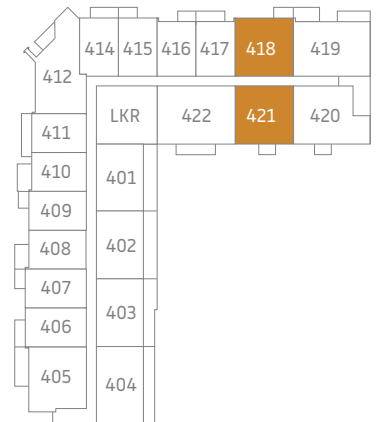
FLOOR 2



FLOOR 3



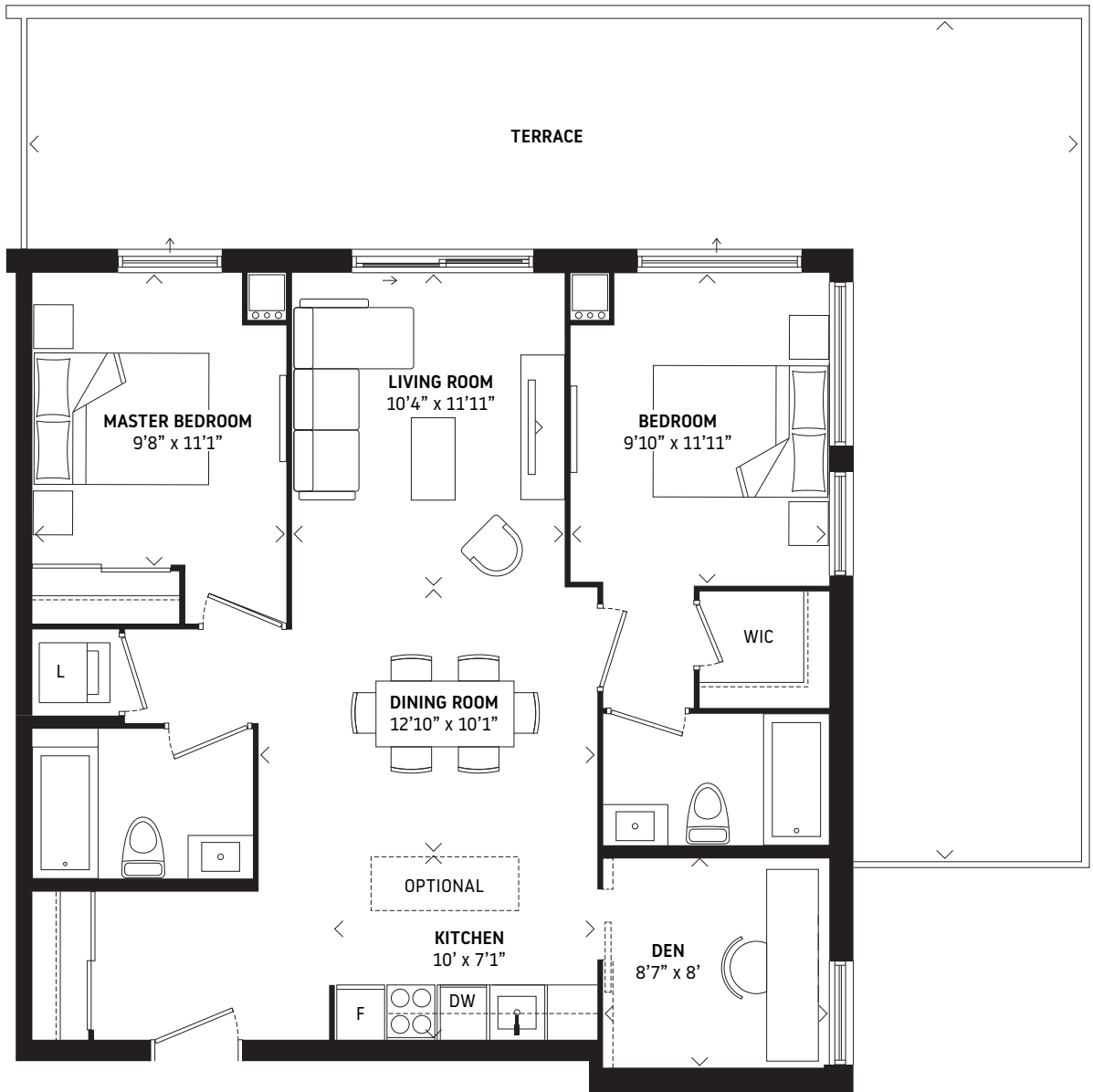
FLOOR 4



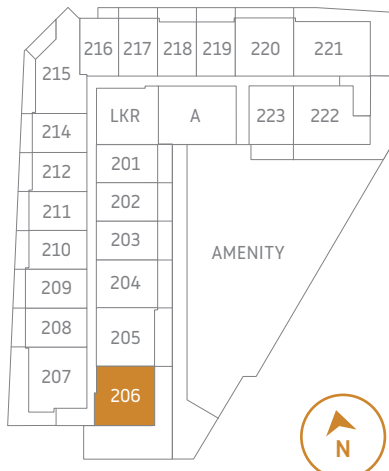
The Bayfield

2 Bedroom + Den | 997 sq.ft. (interior) | 555 sq.ft. (exterior)

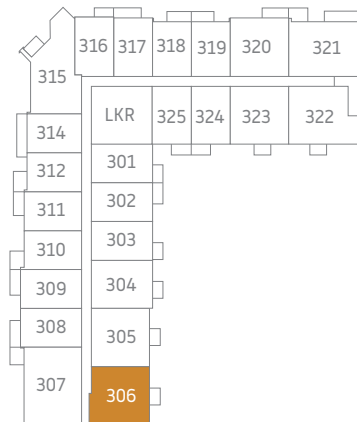
1,552 total sq.ft | Floor 2



FLOOR 2

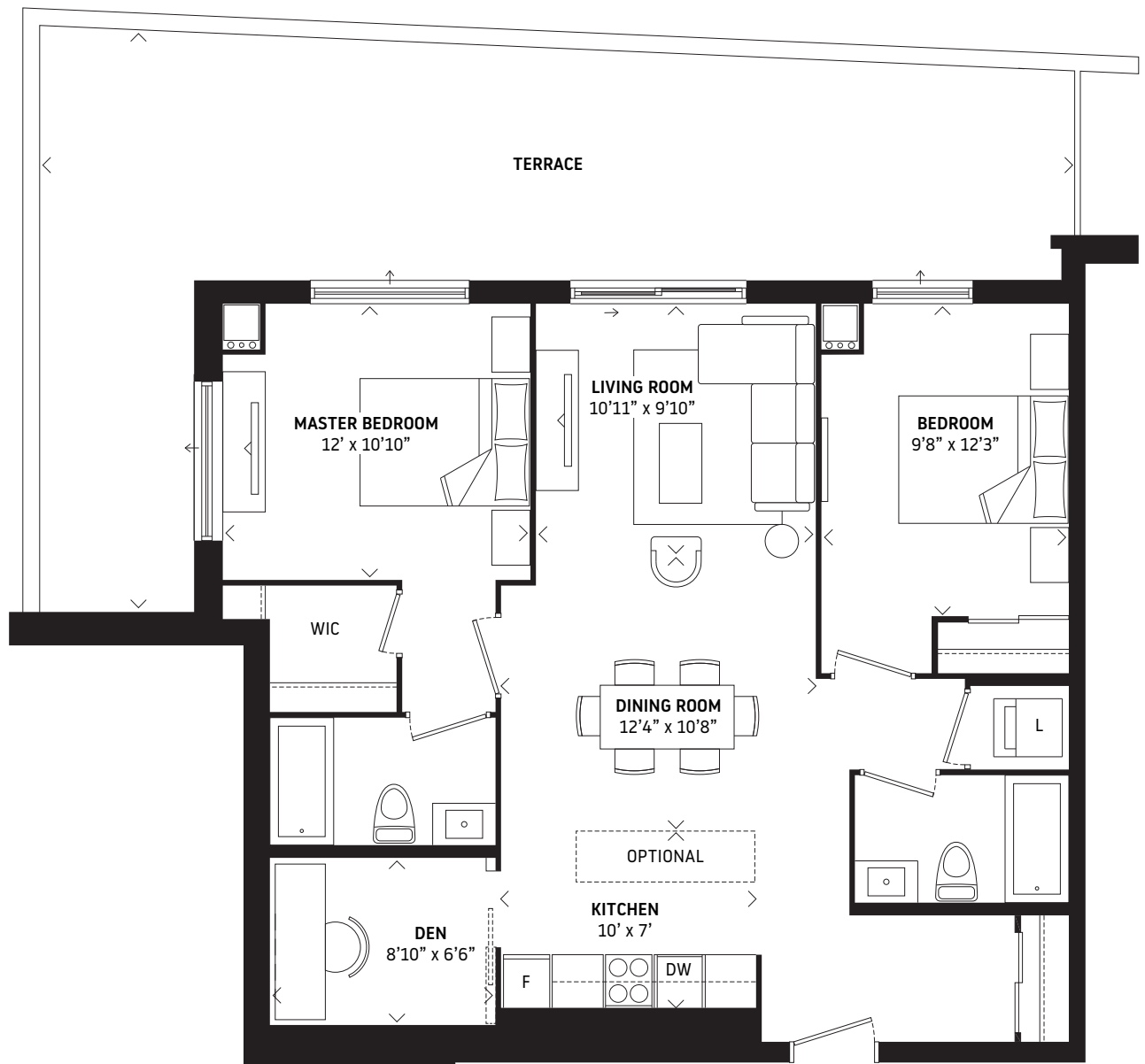


FLOOR 3

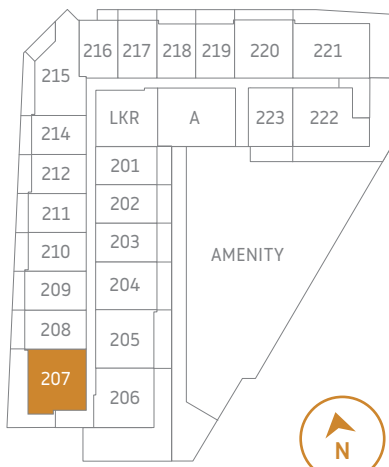


The Orchard

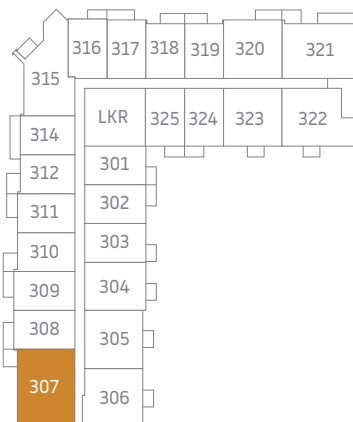
2 Bedroom + Den | 1,033 sq.ft. (interior) | 446 sq.ft. (exterior)
 1,479 total sq.ft | Floor 2



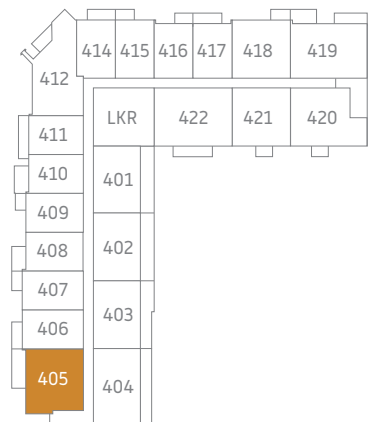
FLOOR 2



FLOOR 3

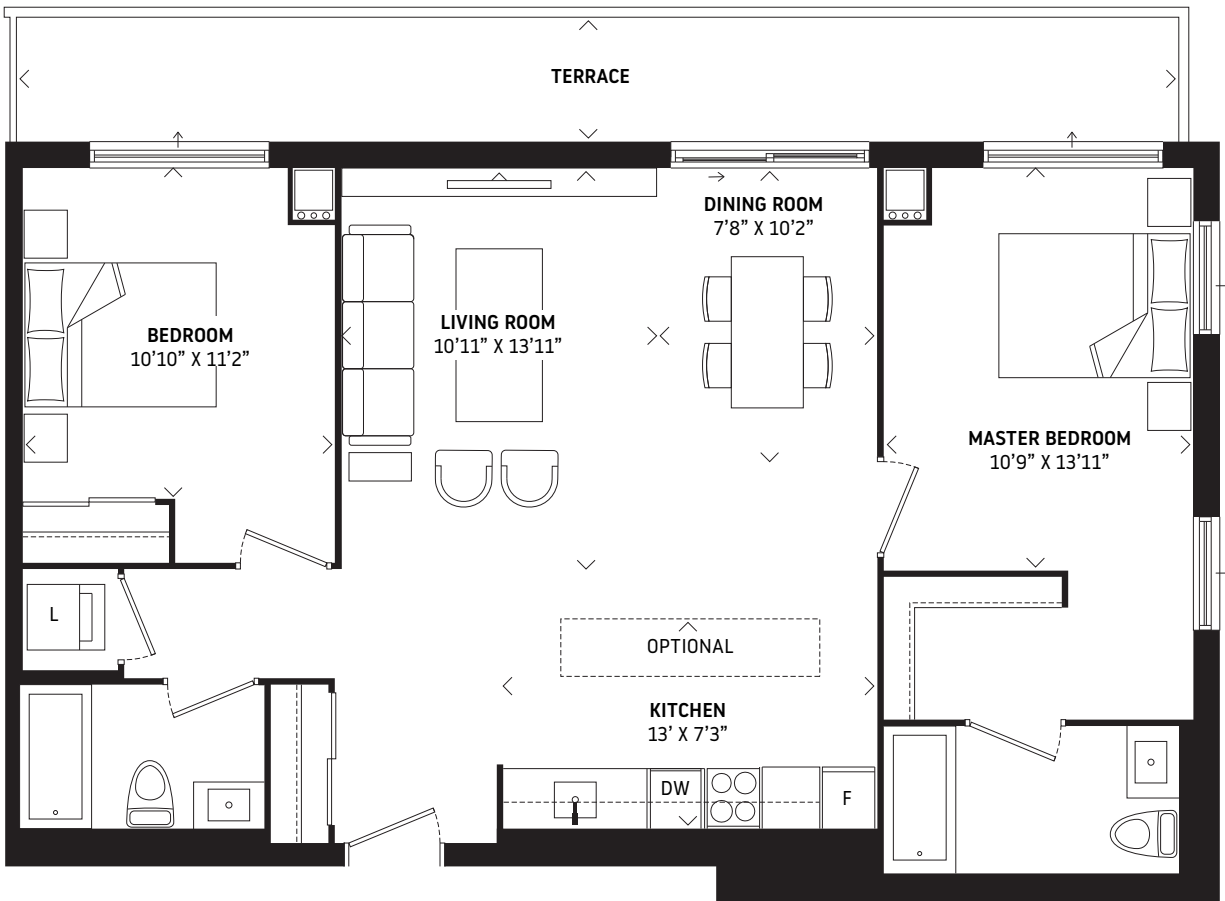


FLOOR 4

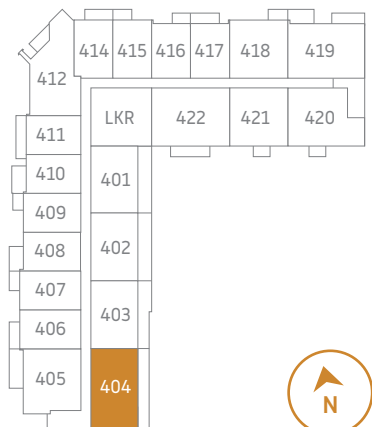


The Sophia

2 Bedroom | 1,078 sq.ft. (interior) | 172 sq.ft. (exterior)
1,250 total sq.ft

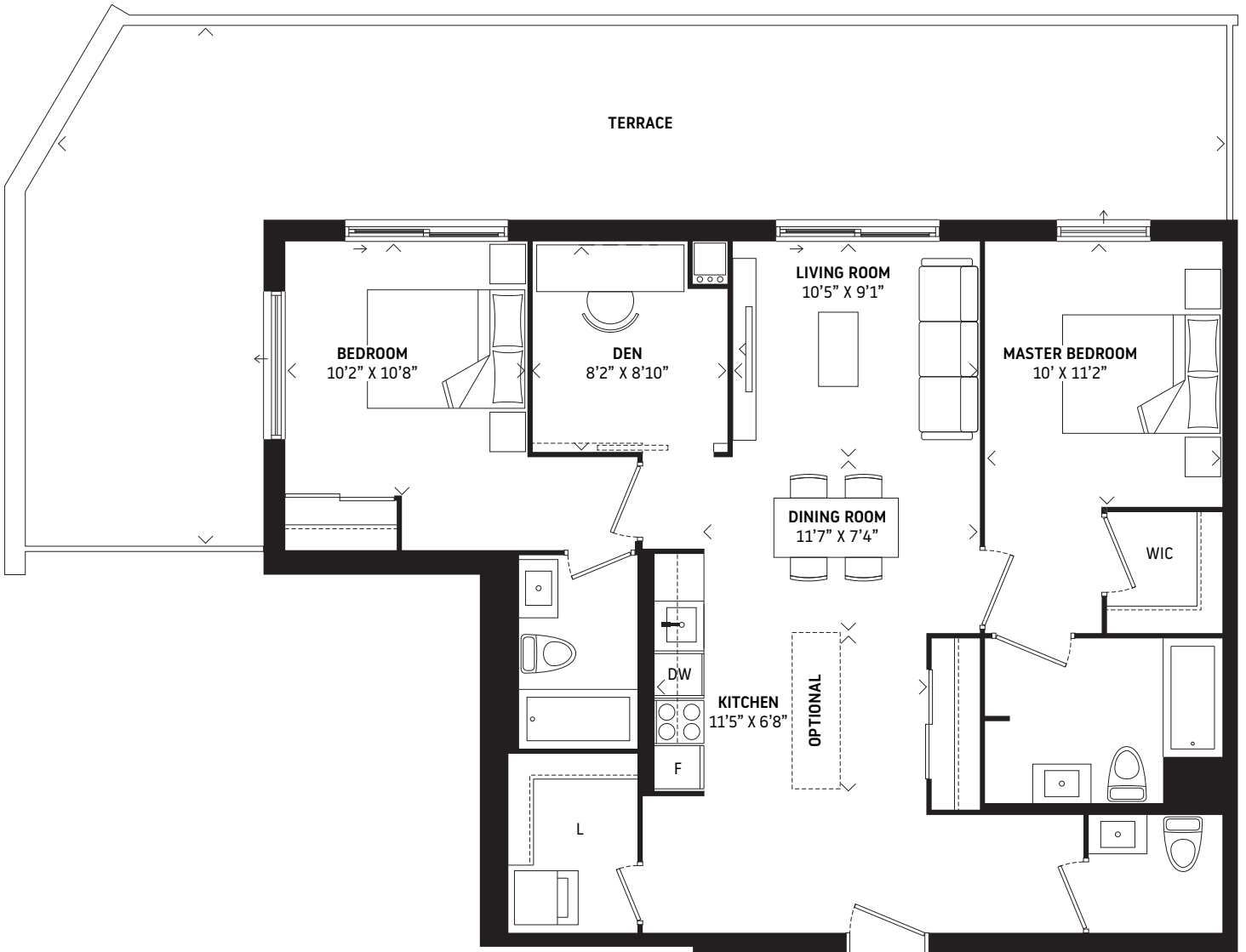


FLOOR 4

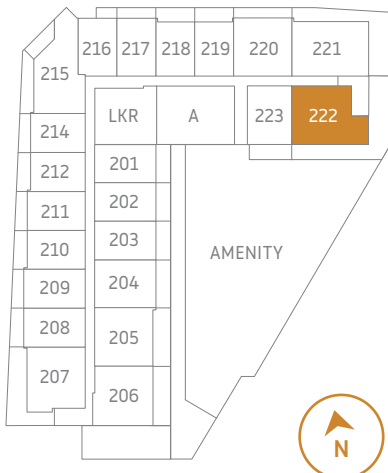


The Parkside

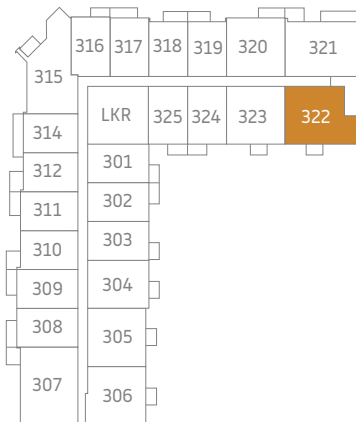
2 Bedroom + Den | 1,112 sq.ft. (interior) | 538 sq.ft. (exterior)
 1,650 total sq.ft | Floor 2



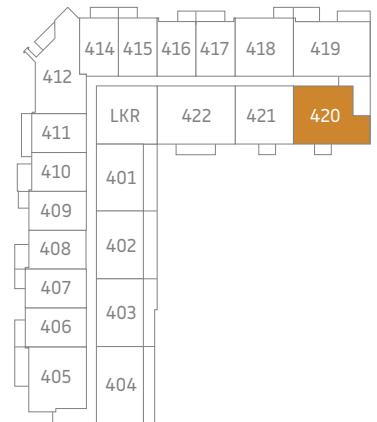
FLOOR 2



FLOOR 3

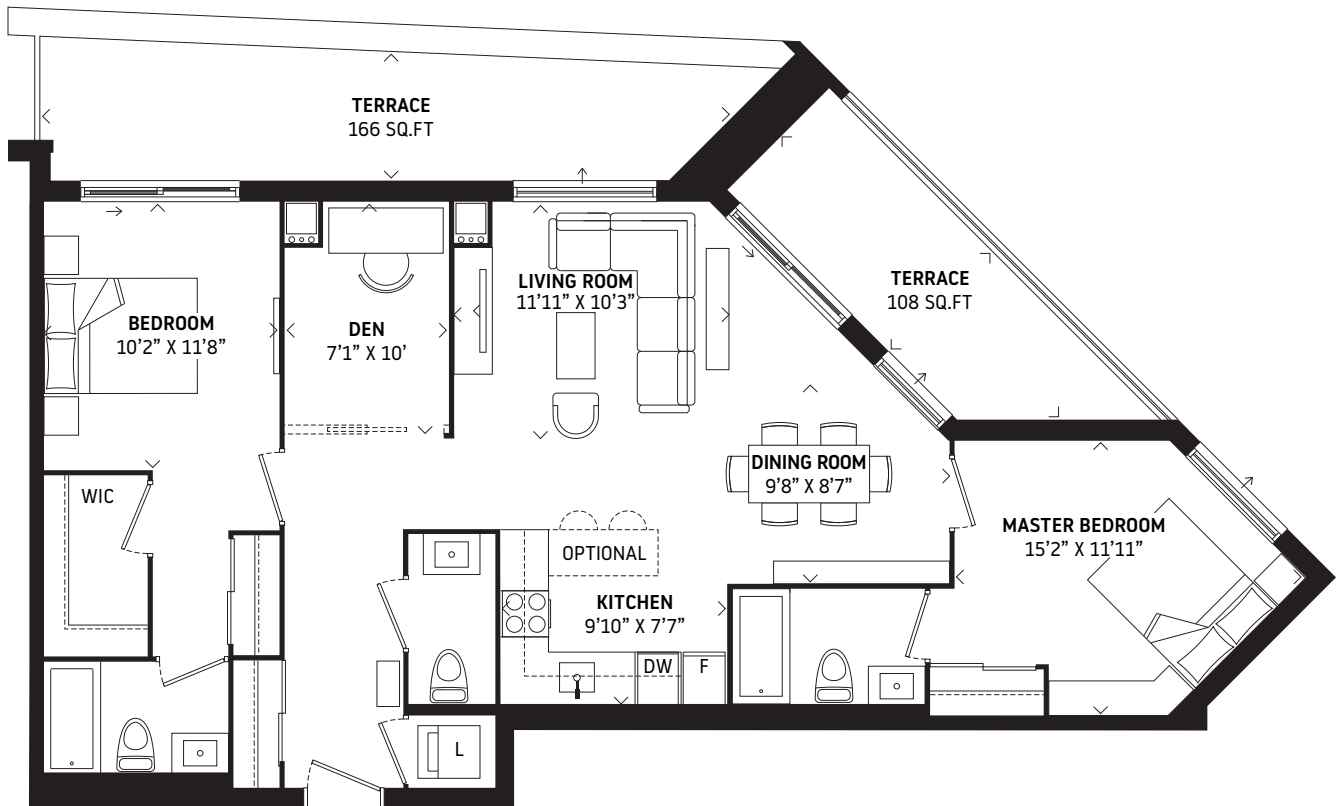


FLOOR 4

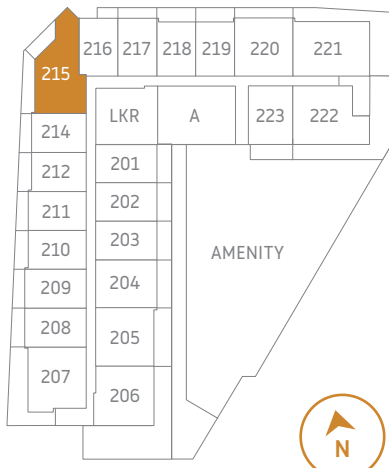


The Dunlop

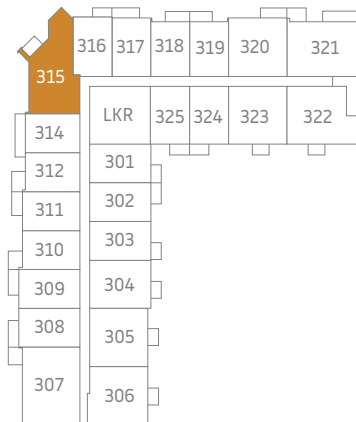
2 Bedroom + Den | 1,134 sq.ft. (interior) | 274 sq.ft. (exterior)
 1,408 total sq.ft | Floor 2



FLOOR 2



FLOOR 3



FLOOR 4

