

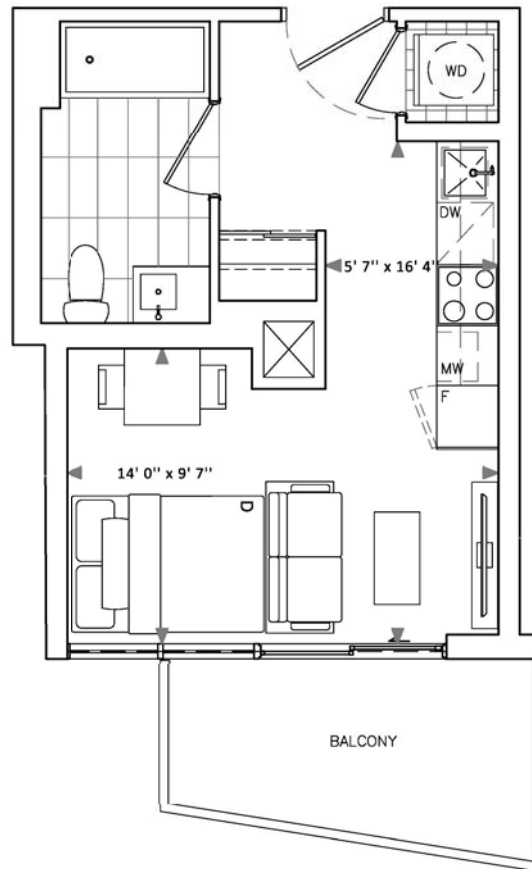
ATTENTION WE HAVE MUCH MORE FLOOR PLANS TO CHOOSE . ALMOST EVERY UNIT ON THIS PROJECT HAS OWN FLOORPLAN
PLEASE CONTACT US TO SCHEDULE THE APPOINTMENT IN THE PRESENTATION CENTRE

THE TWELVE HUNDRED

A1

Interior: 321 Sq Ft Exterior: 74 Sq Ft

Total: 395 Sq Ft



Fieldgate
Urban

TheTwelveHundred.com

Dimensions, specifications, layouts and materials are approximate only and are subject to change without notice. Window sizes and locations may vary. Furniture is for illustration purposes only and does not necessarily reflect the electrical plan for the suite. Suites are sold unfurnished. Actual useable floor space within the unit may be different from stated floor areas or dimensions on this plan. For more information on the method used for calculating the floor area of any unit, please refer to Builder Bulletin No. 22 published by Tarion. Balcony and terrace area is approximate and not included in net suite area. The actual unit purchased may be a reverse layout to the plan shown. E.&O.E.

THE TWELVE HUNDRED

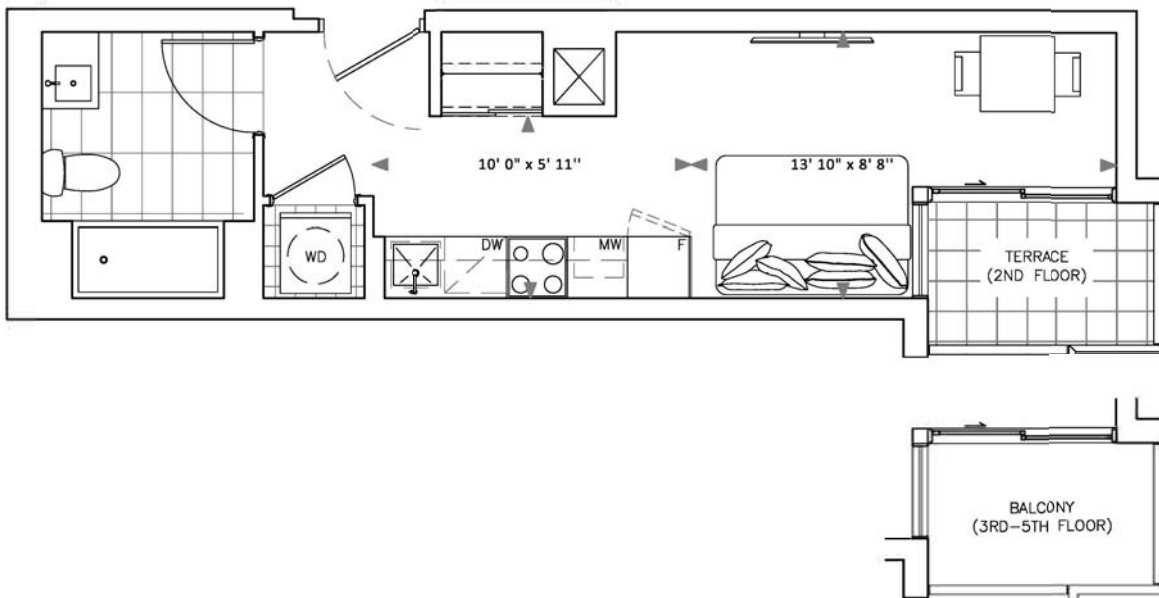
A2

Interior: 324 Sq Ft Exterior (terr.): 37 Sq Ft

Total: 361 Sq Ft

Exterior (balc.): 37 Sq Ft

Total: 361 Sq Ft

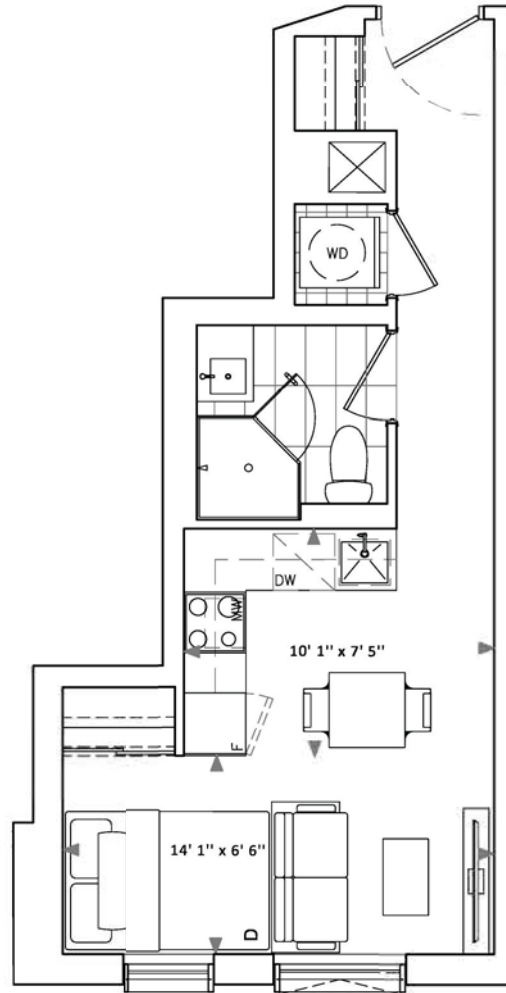


Fieldgate
Urban

TheTwelveHundred.com

Dimensions, specifications, layouts and materials are approximate only and are subject to change without notice. Window sizes and locations may vary. Furniture is for illustration purposes only and does not necessarily reflect the electrical plan for the suite. Suites are sold unfurnished. Actual useable floor space within the unit may be different from stated floor areas or dimensions on this plan. For more information on the method used for calculating the floor area of any unit, please refer to Builder Bulletin No. 22 published by Tarion. Balcony and terrace area is approximate and not included in net suite area. The actual unit purchased may be a reverse layout to the plan shown. E.&O.E.

Interior: 356 Sq Ft Exterior: 0 Sq Ft
Total: 356 Sq Ft



THE TWELVE HUNDRED

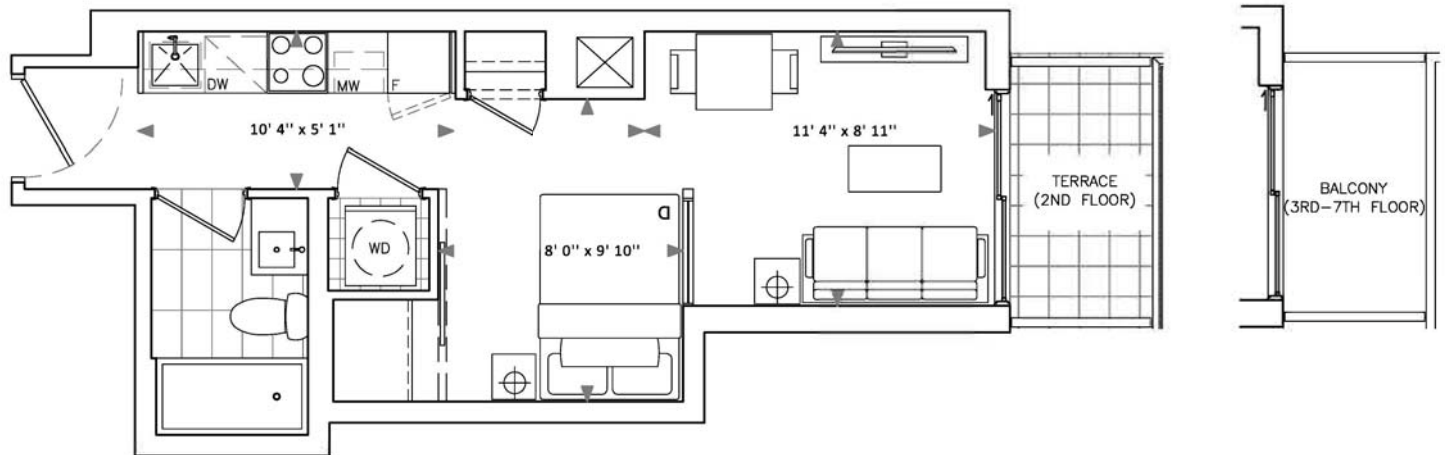
A7

Interior: 359 Sq Ft Exterior (terr.): 40 Sq Ft

Total: 399 Sq Ft

Exterior (balc.): 40 Sq Ft

Total: 399 Sq Ft



Fieldgate
Urban

TheTwelveHundred.com

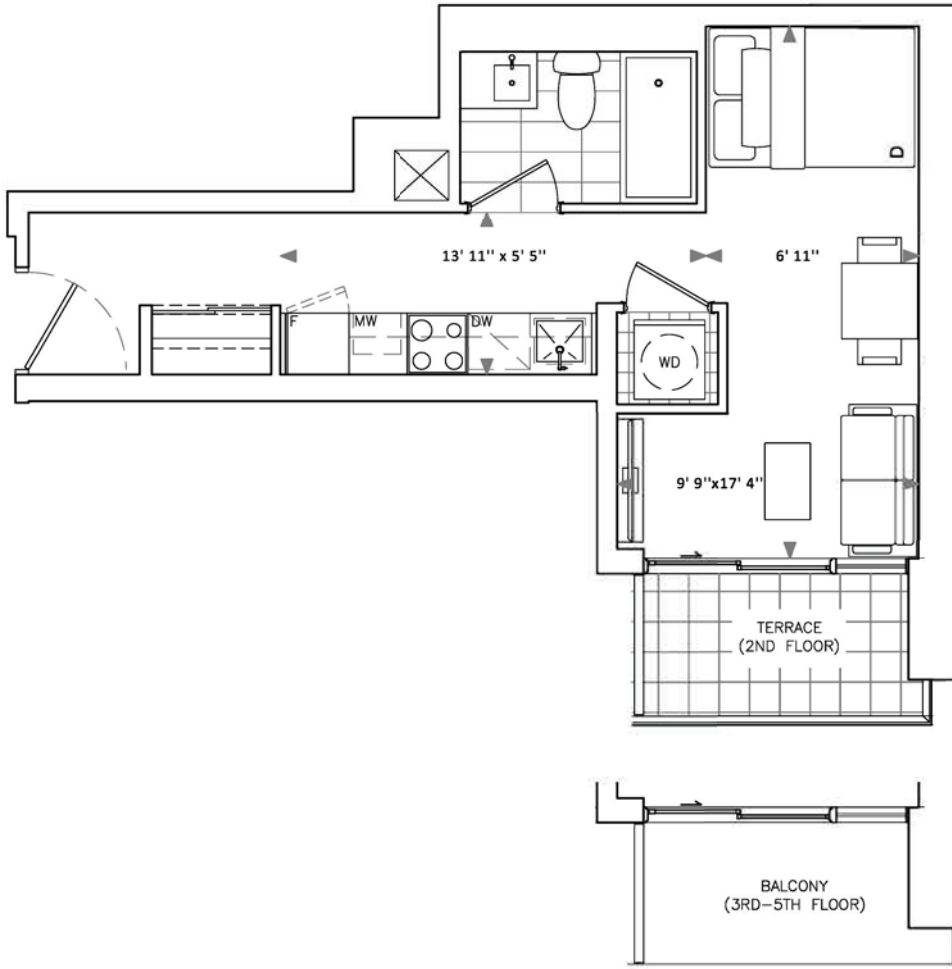
Dimensions, specifications, layouts and materials are approximate only and are subject to change without notice. Window sizes and locations may vary. Furniture is for illustration purposes only and does not necessarily reflect the electrical plan for the suite. Suites are sold unfurnished. Actual useable floor space within the unit may be different from stated floor areas or dimensions on this plan. For more information on the method used for calculating the floor area of any unit, please refer to Builder Bulletin No. 22 published by Tarion. Balcony and terrace area is approximate and not included in net suite area. The actual unit purchased may be a reverse layout to the plan shown. E.&O.E.

Interior: 366 Sq Ft Exterior (terr.): 46 Sq Ft

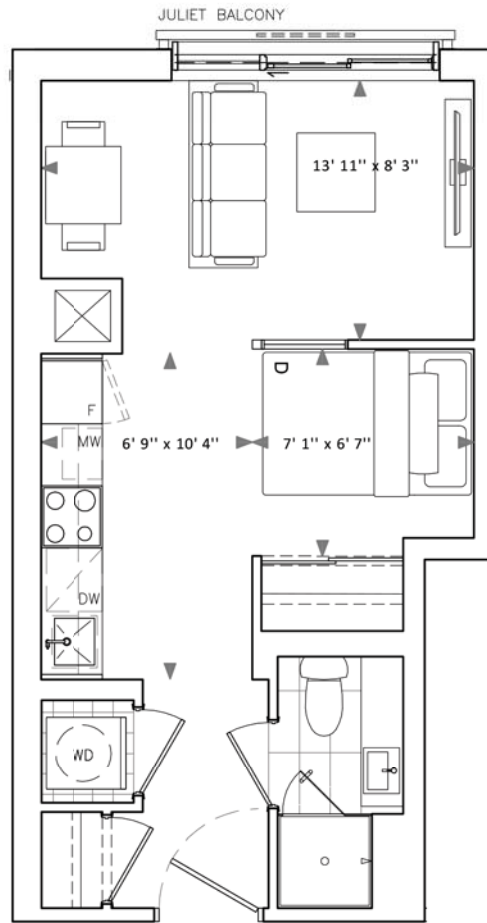
Total: 412 Sq Ft

Exterior (balc.): 51 Sq Ft

Total: 417 Sq Ft



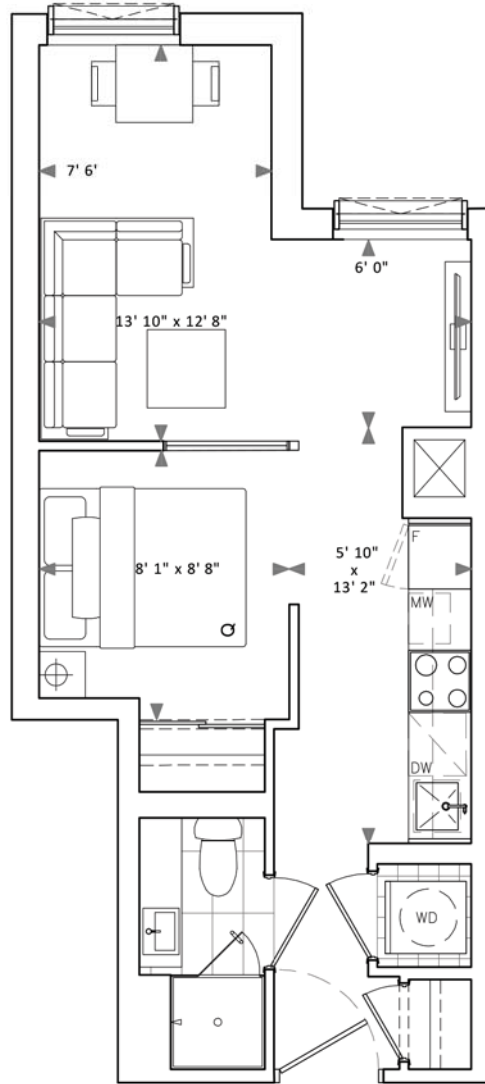
Interior: 383 Sq Ft Exterior: 0 Sq Ft
Total: 383 Sq Ft



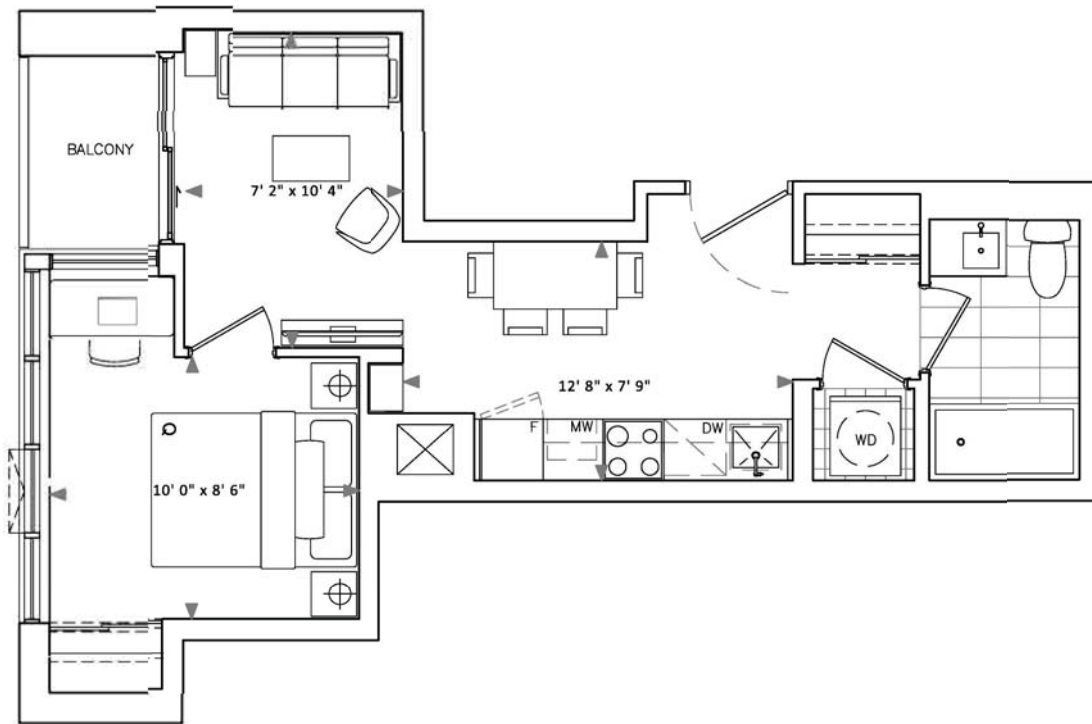
Interior: 425 Sq Ft

Exterior: 0 Sq Ft

Total: 425 Sq Ft



Interior: 441 Sq Ft Exterior: 28 Sq Ft
Total: 469 Sq Ft



THE TWELVE HUNDRED

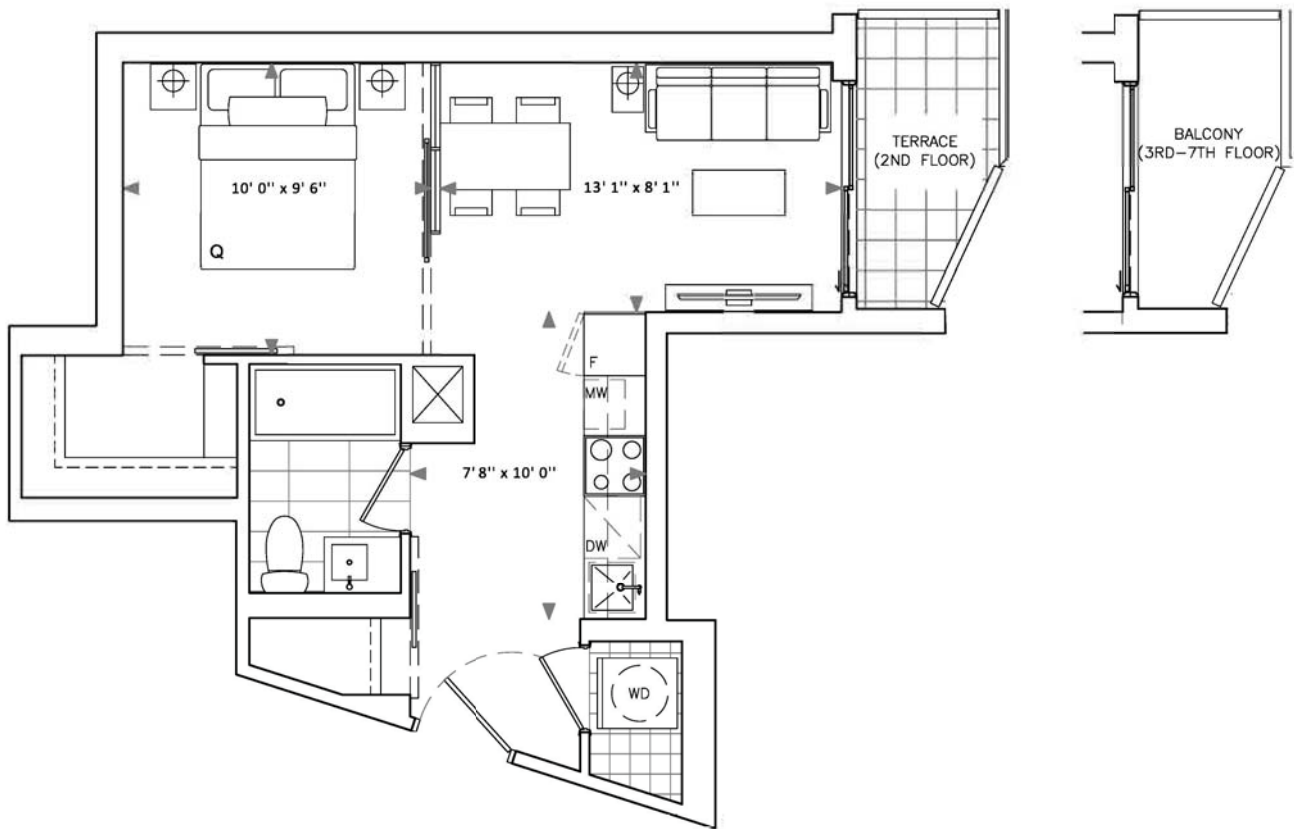
B4

Interior: 465 Sq Ft Exterior (terr.): 40 Sq Ft

Total: 505 Sq Ft

Exterior (balc.): 40 Sq Ft

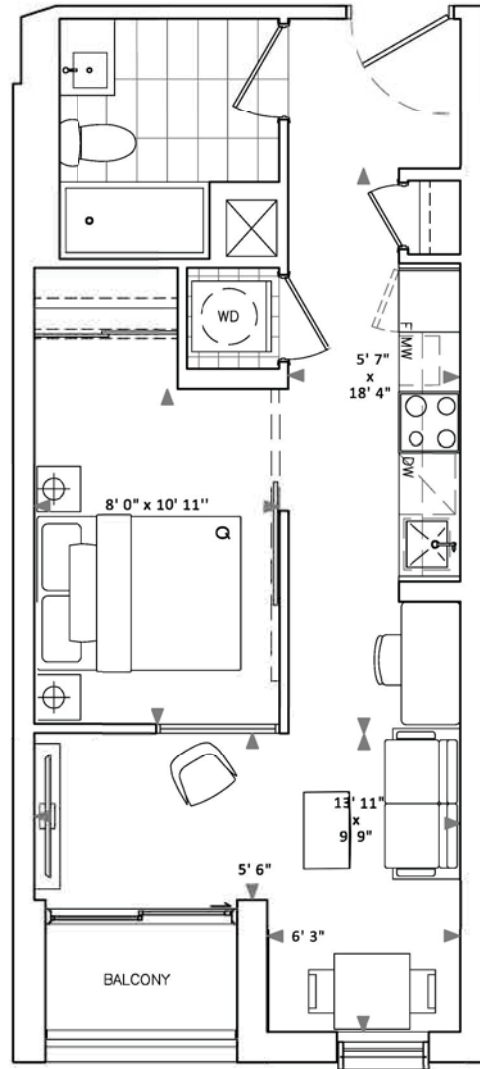
Total: 505 Sq Ft



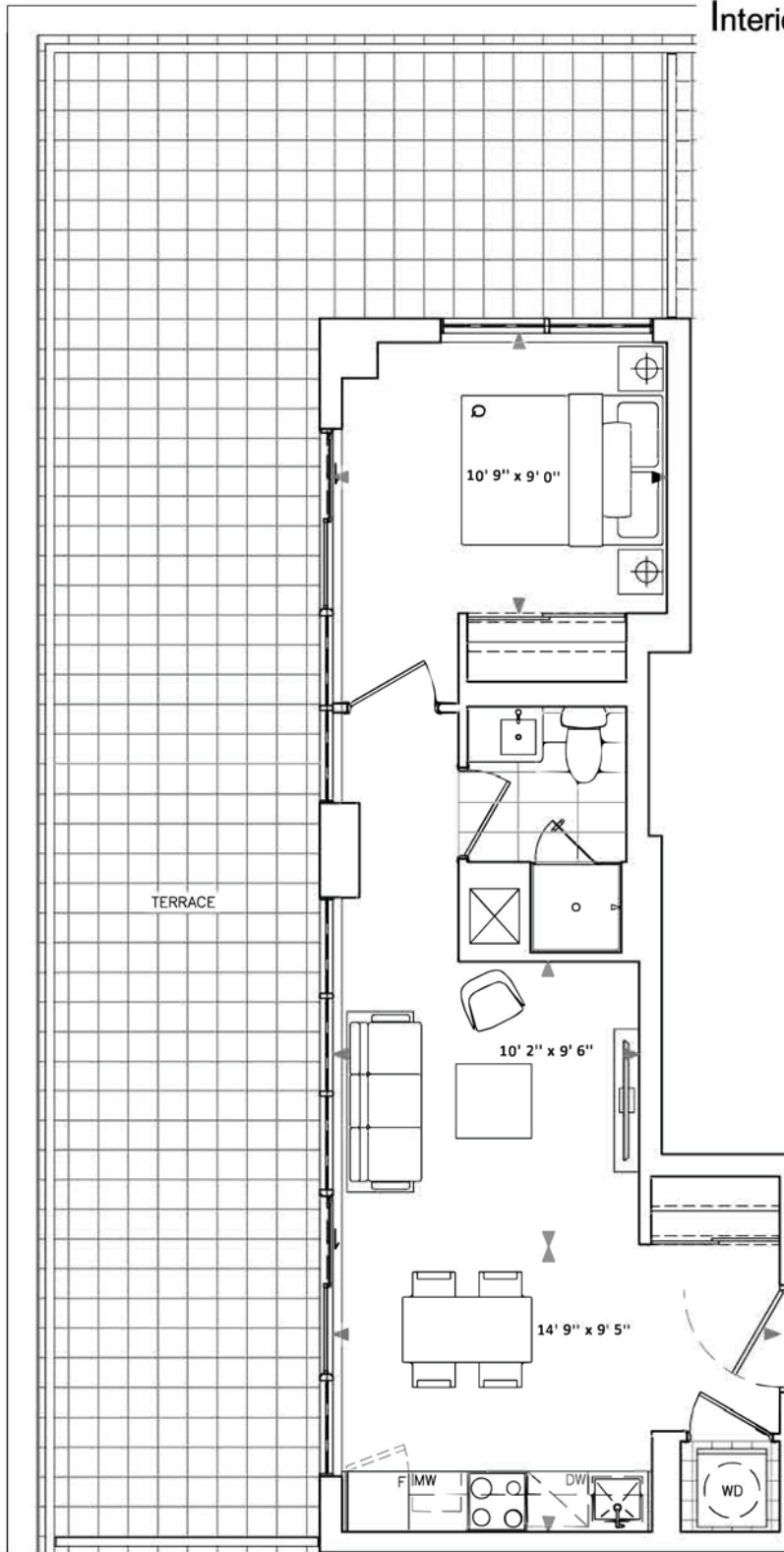
Fieldgate
Urban

TheTwelveHundred.com

Dimensions, specifications, layouts and materials are approximate only and are subject to change without notice. Window sizes and locations may vary. Furniture is for illustration purposes only and does not necessarily reflect the electrical plan for the suite. Suites are sold unfurnished. Actual useable floor space within the unit may be different from stated floor areas or dimensions on this plan. For more information on the method used for calculating the floor area of any unit, please refer to Builder Bulletin No. 22 published by Tarion. Balcony and terrace area is approximate and not included in net suite area. The actual unit purchased may be a reverse layout to the plan shown. E.&O.E.



Interior: 525 Sq Ft Exterior: 570 Sq Ft
Total: 1095 Sq Ft



THE TWELVE HUNDRED

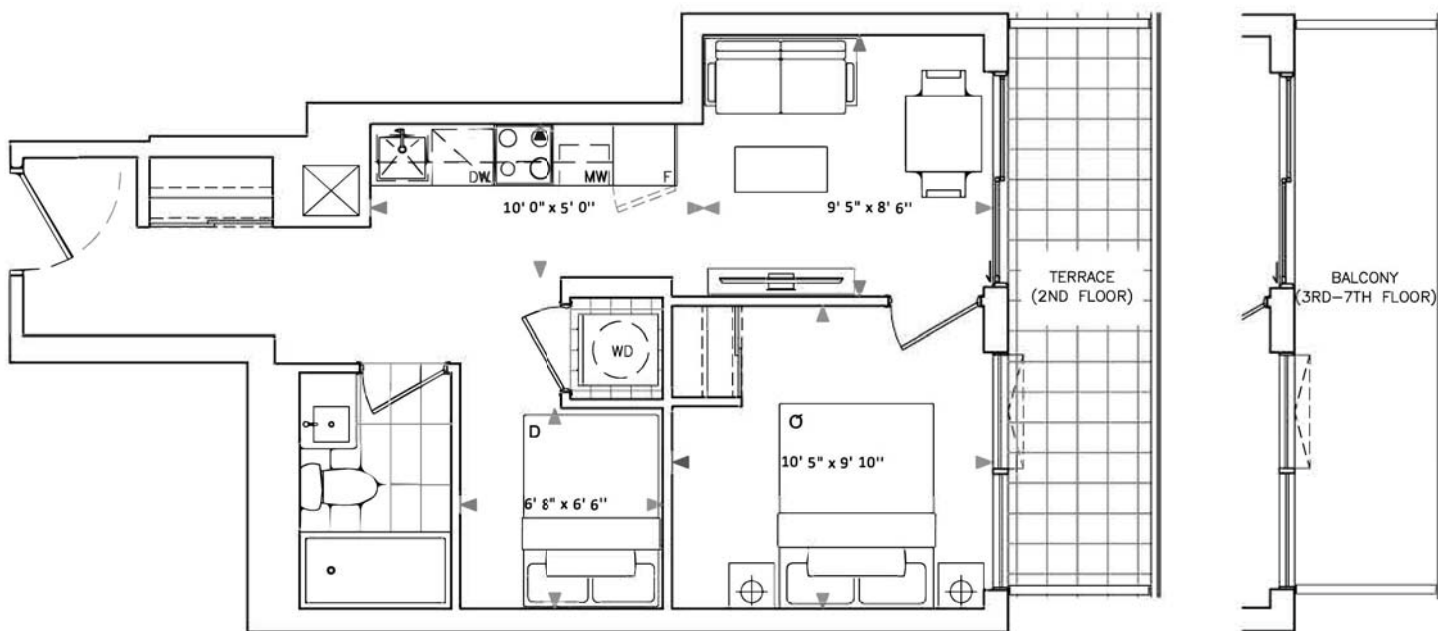
C1

Interior: 490 Sq Ft Exterior (terr.): 90 Sq Ft

Total: 580 Sq Ft

Exterior (balc.): 90 Sq Ft

Total: 580 Sq Ft



Fieldgate
Urban

TheTwelveHundred.com

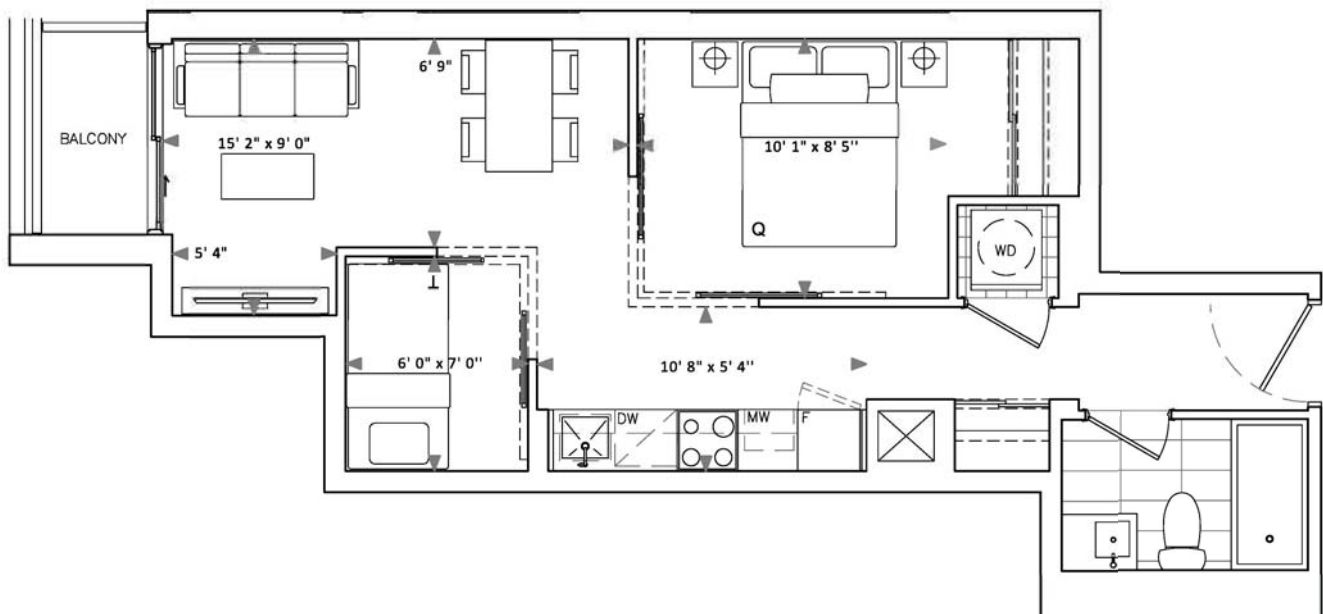
Dimensions, specifications, layouts and materials are approximate only and are subject to change without notice. Window sizes and locations may vary. Furniture is for illustration purposes only and does not necessarily reflect the electrical plan for the suite. Suites are sold unfurnished. Actual useable floor space within the unit may be different from stated floor areas or dimensions on this plan. For more information on the method used for calculating the floor area of any unit, please refer to Builder Bulletin No. 22 published by Tarion. Balcony and terrace area is approximate and not included in net suite area. The actual unit purchased may be a reverse layout to the plan shown. E.&O.E.

THE TWELVE HUNDRED

C2

Interior: 505 Sq Ft Exterior: 26 Sq Ft

Total: 531 Sq Ft

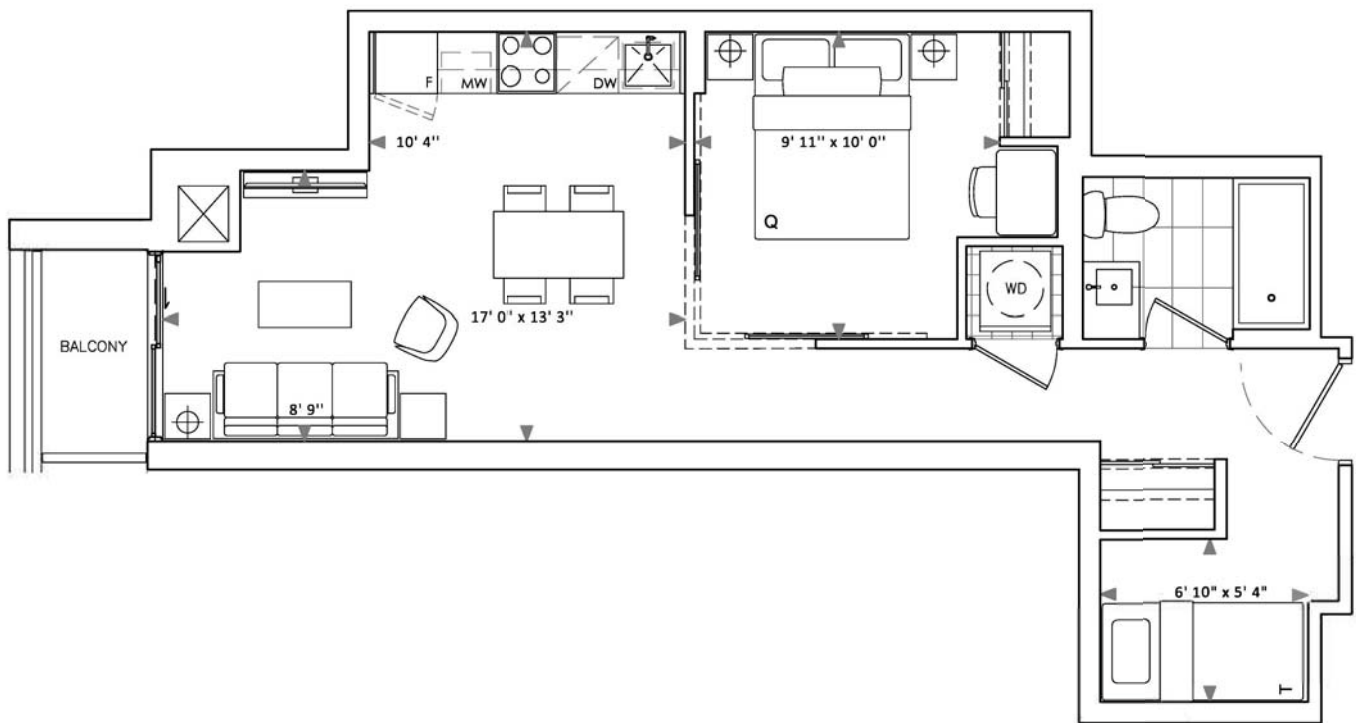


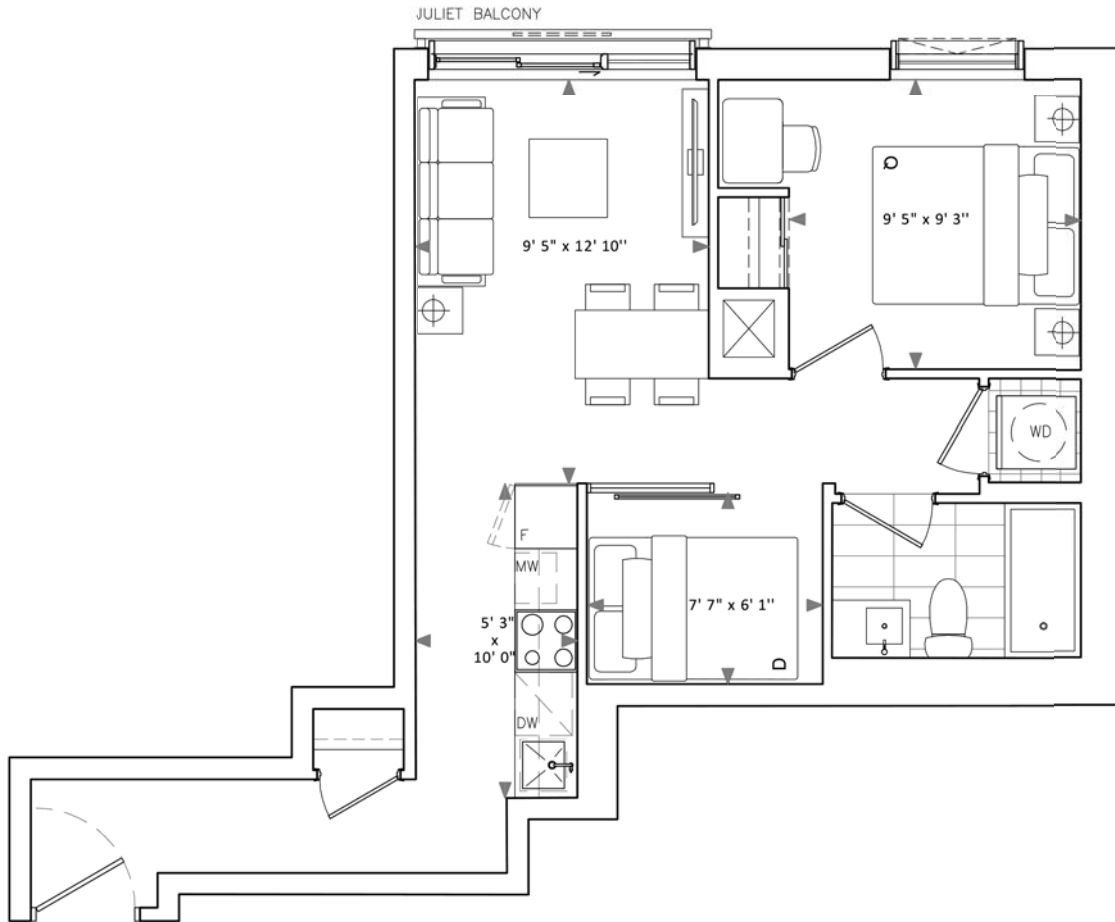
Fieldgate
Urban

TheTwelveHundred.com

Dimensions, specifications, layouts and materials are approximate only and are subject to change without notice. Window sizes and locations may vary. Furniture is for illustration purposes only and does not necessarily reflect the electrical plan for the suite. Suites are sold unfurnished. Actual useable floor space within the unit may be different from stated floor areas or dimensions on this plan. For more information on the method used for calculating the floor area of any unit, please refer to Builder Bulletin No. 22 published by Tarion. Balcony and terrace area is approximate and not included in net suite area. The actual unit purchased may be a reverse layout to the plan shown. E.&O.E.

Interior: 548 Sq Ft Exterior: 27 Sq Ft
Total: 575 Sq Ft



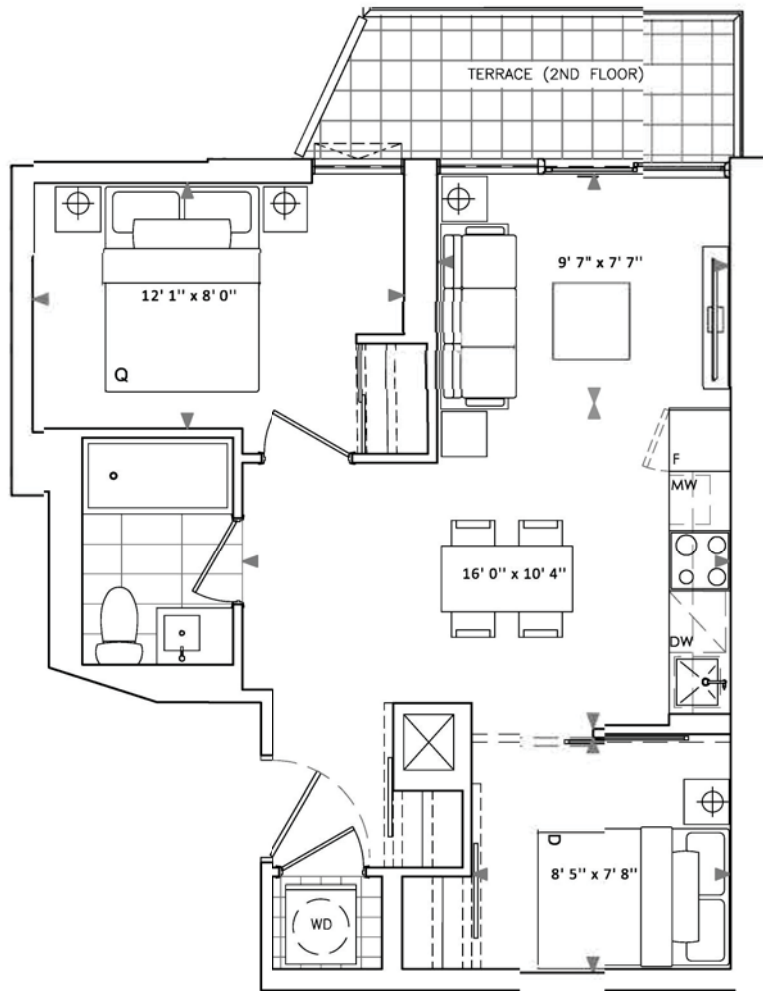
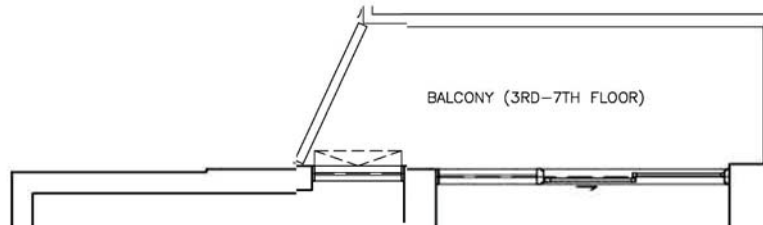


Interior: 577 Sq Ft Exterior (terr.): 66 Sq Ft

Total: 643 Sq Ft

Exterior (balc.): 71 Sq Ft

Total: 648 Sq Ft

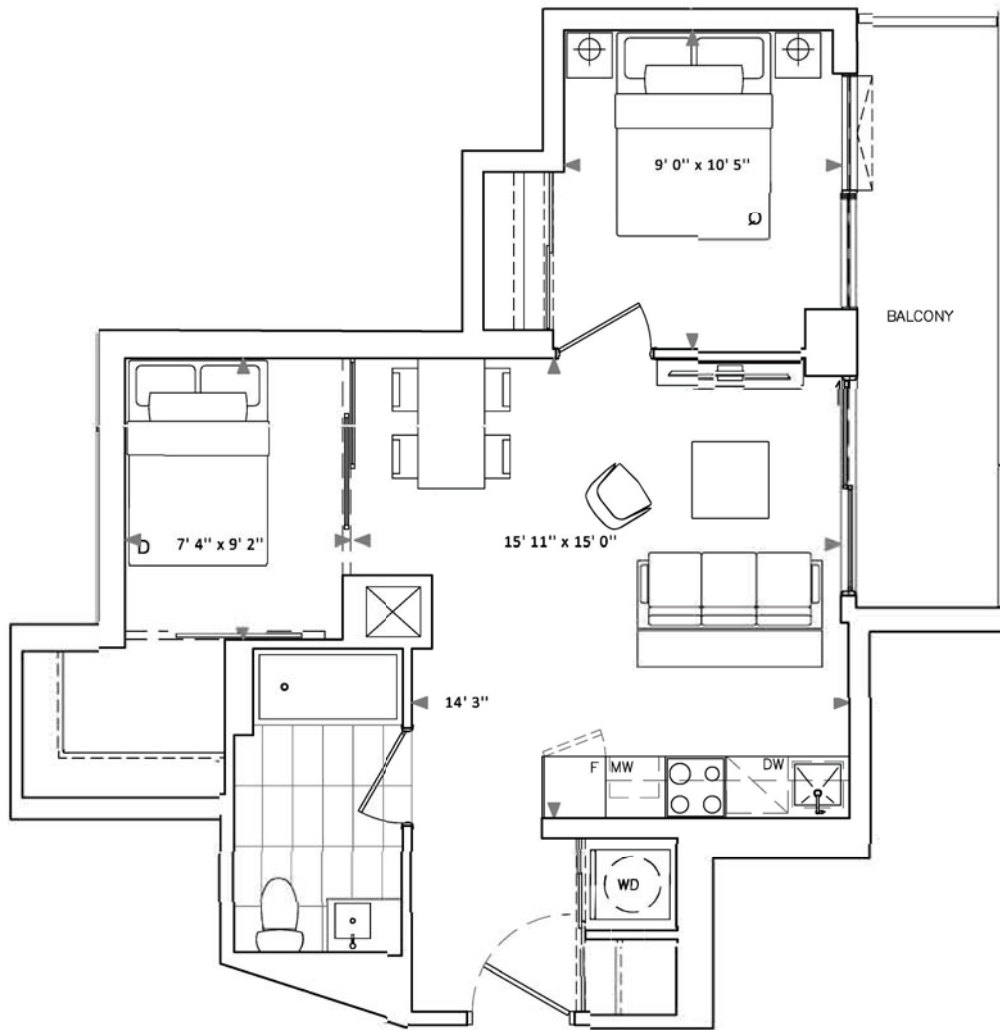


THE TWELVE HUNDRED

E2

Interior: 625 Sq Ft Exterior: 93 Sq Ft

Total: 718 Sq Ft



Fieldgate
Urban

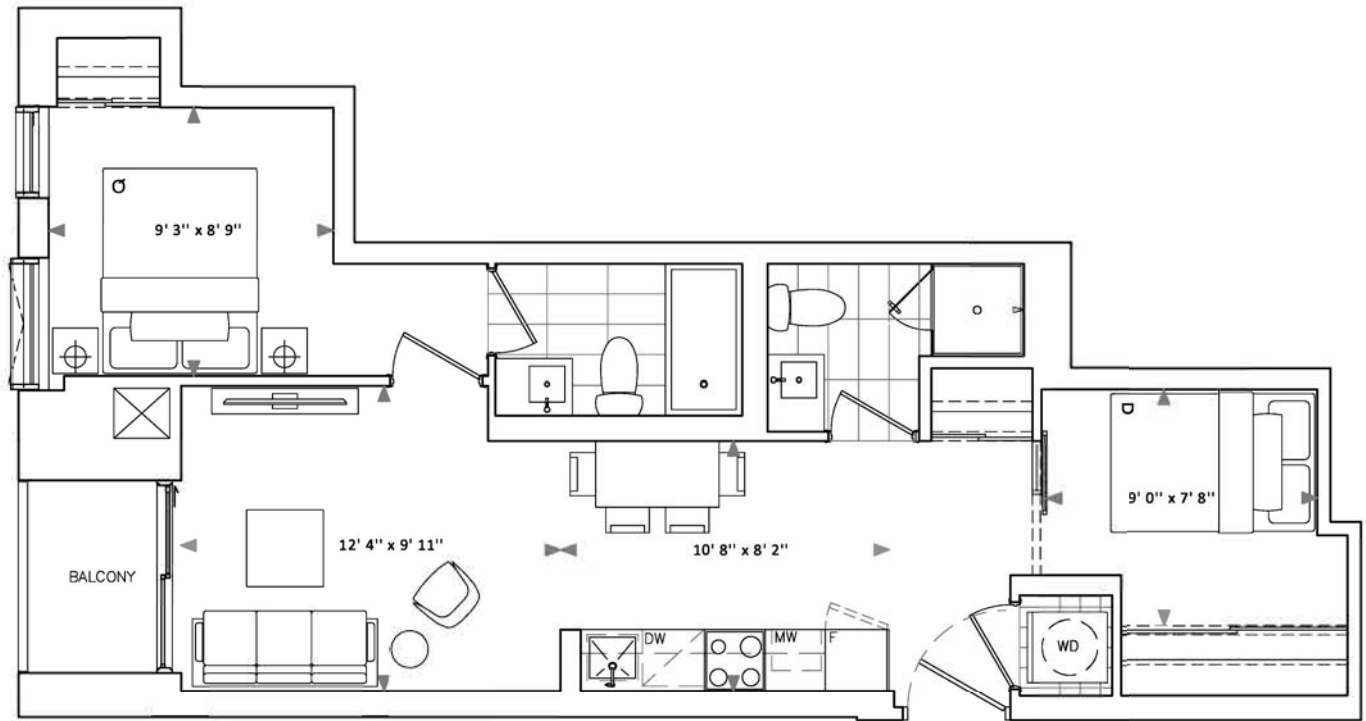
TheTwelveHundred.com

Dimensions, specifications, layouts and materials are approximate only and are subject to change without notice. Window sizes and locations may vary. Furniture is for illustration purposes only and does not necessarily reflect the electrical plan for the suite. Suites are sold unfurnished. Actual useable floor space within the unit may be different from stated floor areas or dimensions on this plan. For more information on the method used for calculating the floor area of any unit, please refer to Builder Bulletin No. 22 published by Tarion. Balcony and terrace area is approximate and not included in net suite area. The actual unit purchased may be a reverse layout to the plan shown. E.&O.E.

THE TWELVE HUNDRED

E6

Interior: 641 Sq Ft Exterior: 28 Sq Ft
Total: 669 Sq Ft



Fieldgate
Urban

TheTwelveHundred.com

Dimensions, specifications, layouts and materials are approximate only and are subject to change without notice. Window sizes and locations may vary. Furniture is for illustration purposes only and does not necessarily reflect the electrical plan for the suite. Suites are sold unfurnished. Actual useable floor space within the unit may be different from stated floor areas or dimensions on this plan. For more information on the method used for calculating the floor area of any unit, please refer to Builder Bulletin No. 22 published by Tarion. Balcony and terrace area is approximate and not included in net suite area. The actual unit purchased may be a reverse layout to the plan shown. E.&O.E.

Interior: 774 Sq Ft

Exterior: 24 Sq Ft

Total: 798 Sq Ft

