

# PERFECT REASONS TO BUY

## THE GLOUCESTER ON YONGE



- 1** Built by Canada's largest community builder, CONCORD
- 2** Prime downtown Toronto location - Central to every direction
- 3** Direct subway connection (in-building access to station)
- 4** First condo in Canada to have bacteria and virus mitigation technology (Concord BioSpace)
- 5** Rare combination of downtown Yonge Street & park front living
- 6** Arrive in style - Grand entrance with elegant motor court motif design and 4-storey high lobby
- 7** Super parcel locker service
- 8** Building water leak detection technology
- 9** Sculptural 50-storey glass tower and 21-storey Private Residence featuring separate lobby and direct access elevator to suite
- 10** 9' smooth ceilings and luxurious interior finishes

# 1

## TRUSTED DEVELOPER

Building Communities Across The Globe





1

# TRUSTED DEVELOPER

Building Communities Across The Globe





1

# TRUSTED DEVELOPER

Canada's Largest Community Builder



Concord Metrotown  
Vancouver, BC



The Concord  
Calgary, AB



Concord Brentwood  
Burnaby, BC



Concord Gardens  
Richmond, BC



1

# TRUSTED DEVELOPER

Largest Urban Master-Planned Community in Ontario (Built)



Concord CityPlace  
Toronto



1

# TRUSTED DEVELOPER

2<sup>nd</sup> Largest Urban Master-Planned Community in Ontario (Built)



Concord Park Place  
North York



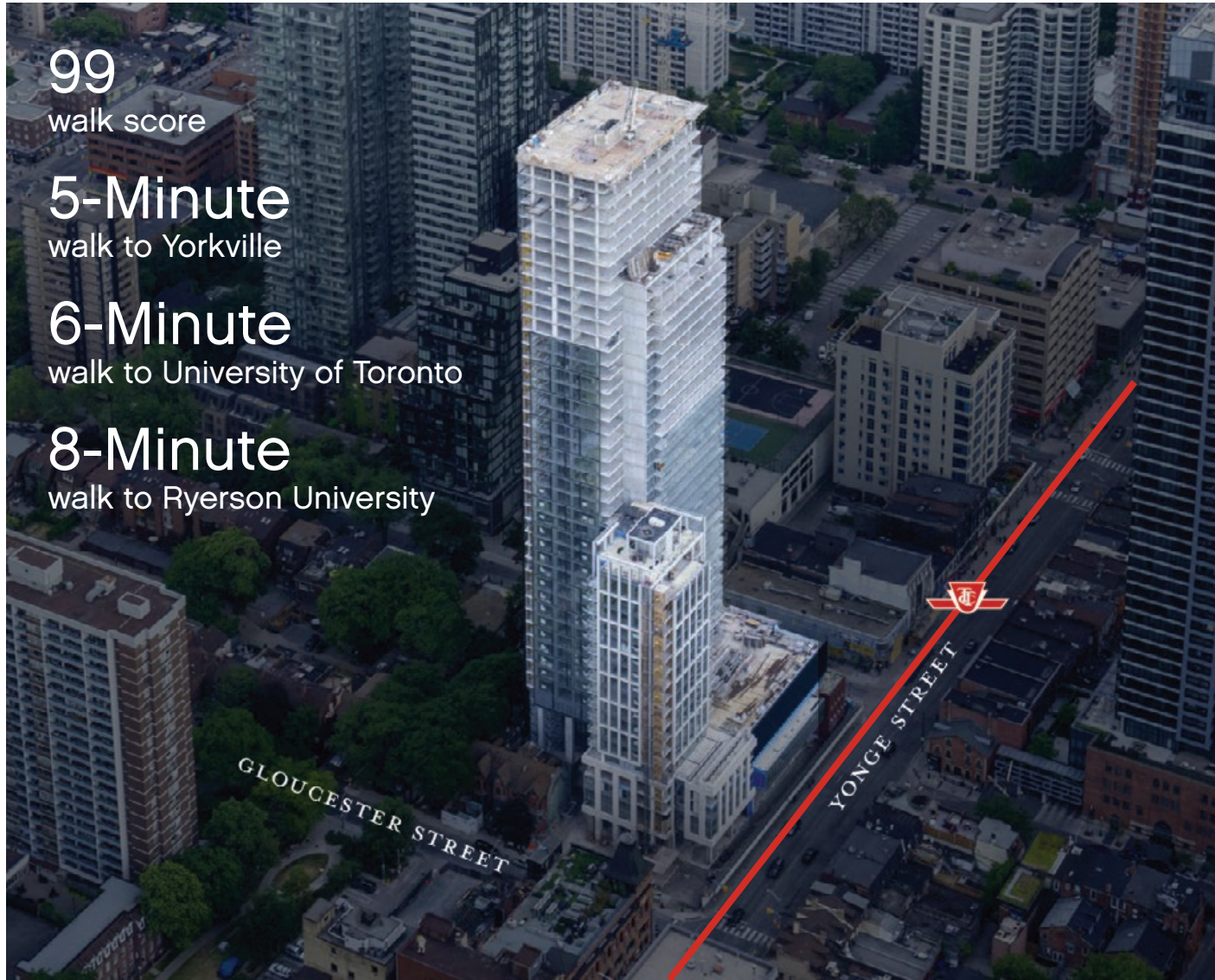


THE  
GL  UCESTER  
ON YONGE

Formerly “The Clover on Yonge”

# 2

## PRIME DOWNTOWN TORONTO LOCATION





3

# DIRECT SUBWAY CONNECTION (In-Building Access to Station)





## 4

## CONCORD BIOSPACE FEATURES



To reduce touch-points,  
access to major entry points and  
high-traffic common areas, including elevators,  
can be controlled through your mobile phone



4

## CONCORD BIOSPACE FEATURES

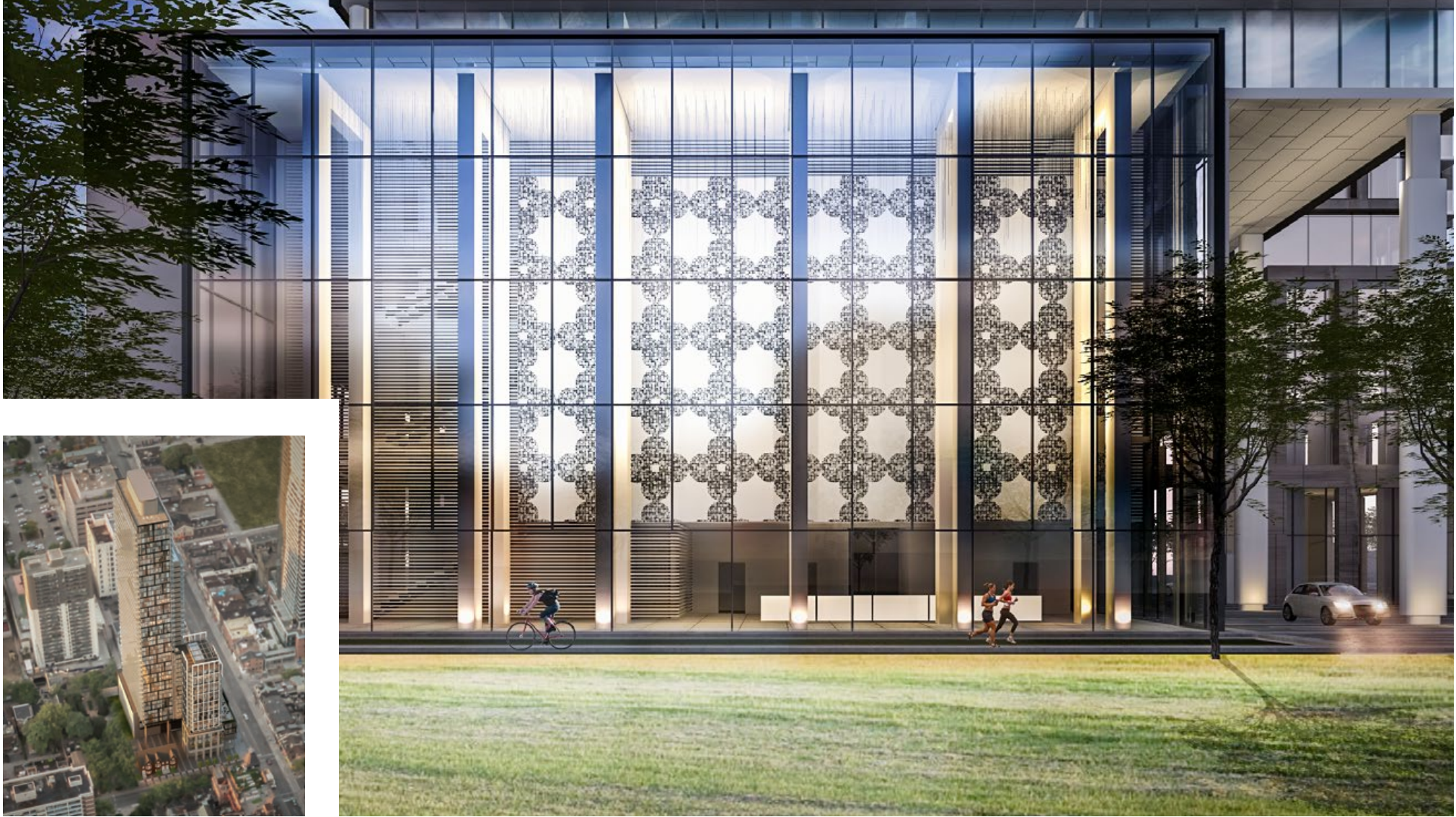
Canada's 1<sup>st</sup> Condo to Have Bacteria and Virus Mitigation Technology



Cleaner and safer indoor spaces through improved indoor airflow and filtration in high-traffic areas



# 5 RARE COMBINATION OF DOWNTOWN & PARK LIVING



THE  
GL + UCESTER  
ON YONGE

CONCORD



6

## ARRIVE IN STYLE

(Grand Entrance with Elegant Motor Court Motif Design & 4-Storey High Lobby)





7

## SUPER PARCEL LOCKER SERVICE





# 8

## LEAK DETECTION MONITOR

(Building-Wide Water Leak Detection and Remote Shut-Off System)





9

# 50-STOREY GLASS TOWER & 21-STOREY PRIVATE RESIDENCE (Featuring Separate Lobby and Direct Access Elevator to Suite)



Completion in early 2022





10 9' SMOOTH CEILINGS & LUXURIOUS INTERIOR FINISHES





10 9' SMOOTH CEILINGS & LUXURIOUS INTERIOR FINISHES





# 10 9' SMOOTH CEILINGS & LUXURIOUS INTERIOR FINISHES

