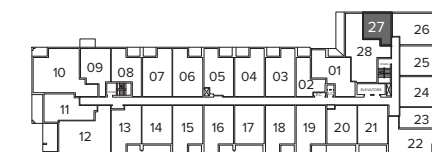
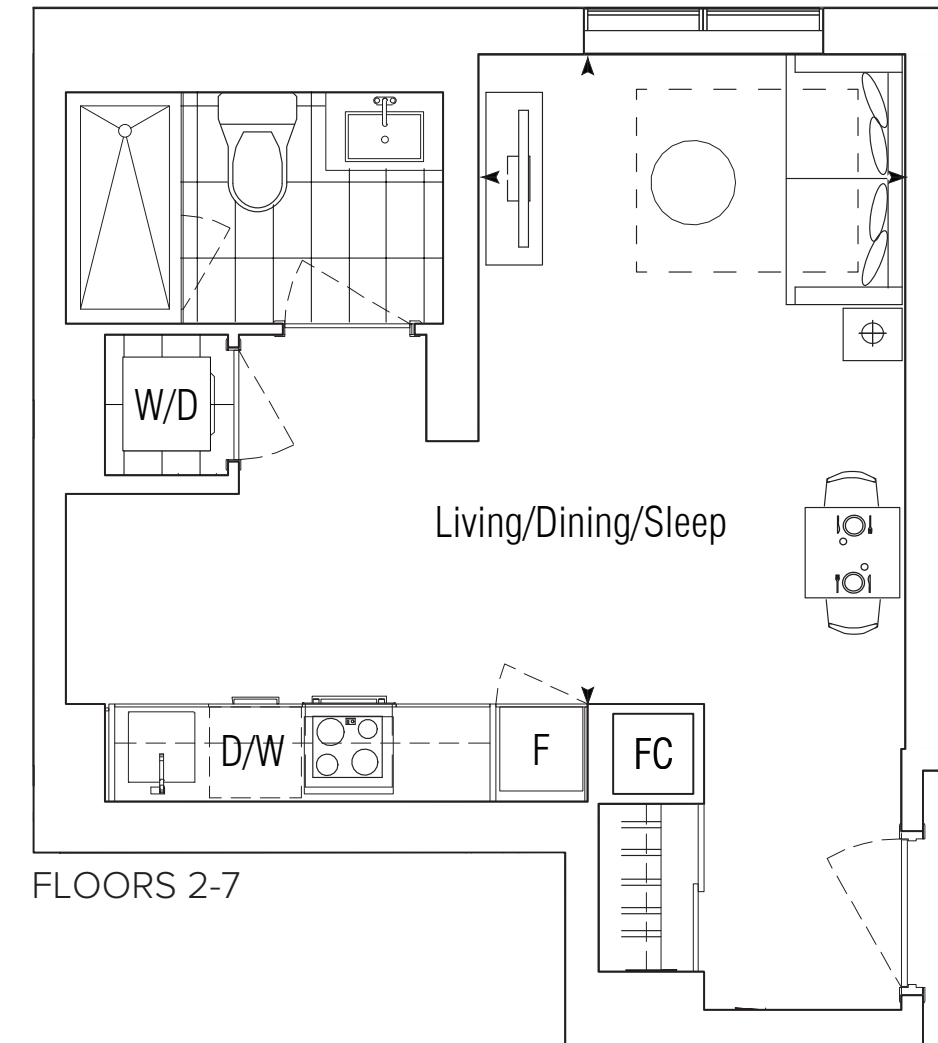


1S-B

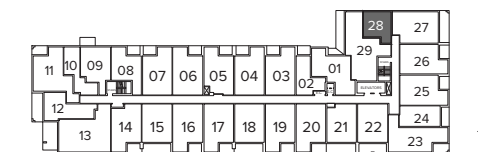
SUITE 1S-B
STUDIO
INTERIOR: 358 SQ.FT.
TOTAL: 358 SQ.FT.

LIVING/DINING/SLEEP 9'-0" x 13'-9"

Studio, 1 & 2 Bedroom *Floorplans*



FLOORS 6-7



FLOORS 2-5

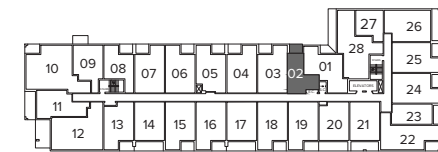
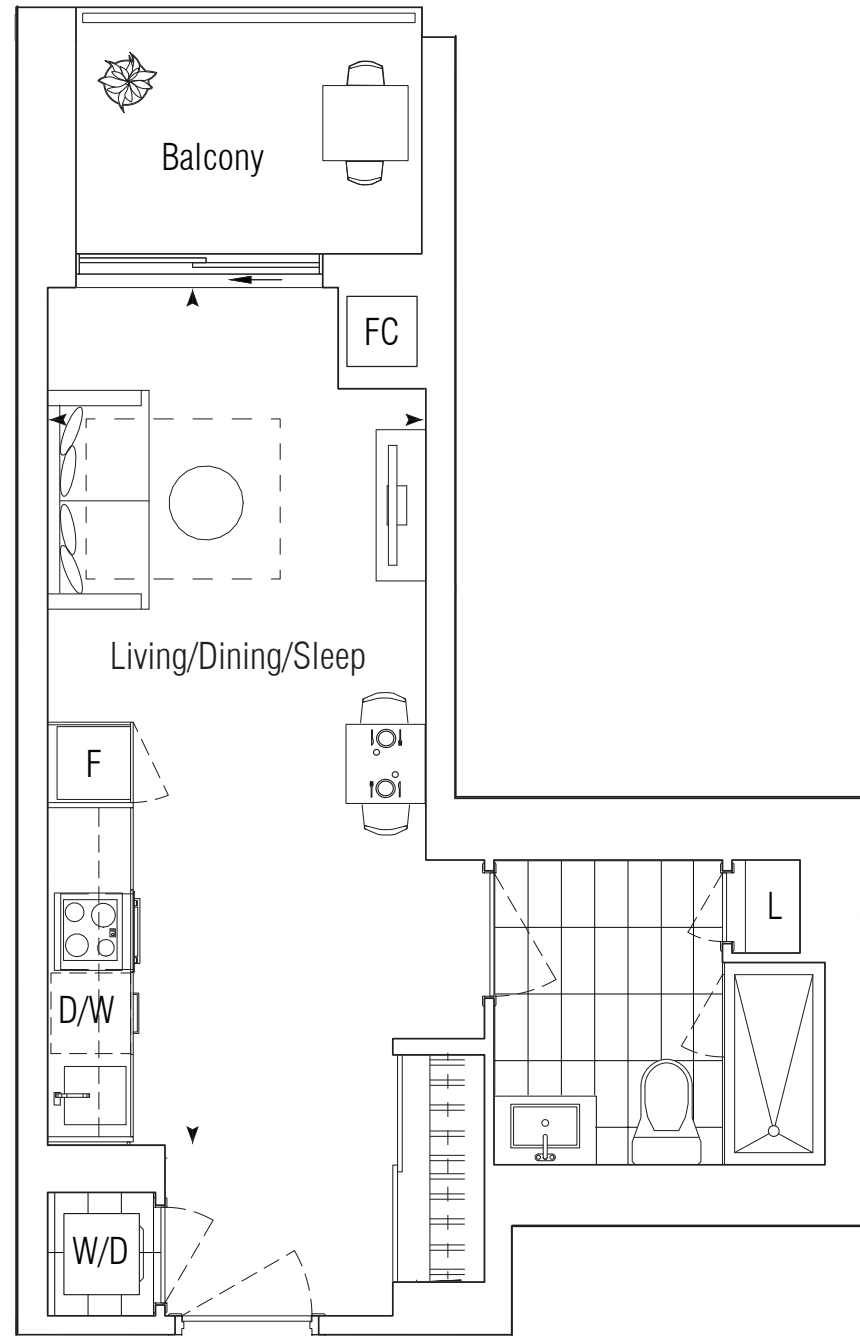


ALL DIMENSIONS AND SPECIFICATIONS ARE APPROXIMATE. CERTAIN PLANS ARE REVERSE OR MIRROR IMAGE. BALCONY SQUARE FOOTAGES ARE ESTIMATED AND MAY VARY FROM THAT STATED. PLEASE SEE SALES REPRESENTATIVE FOR DETAILS. FURNITURE NOT INCLUDED. REFER TO KEY PLAN FOR UNIT LOCATION AND ORIENTATION. PREPARED MAR 8, 2021

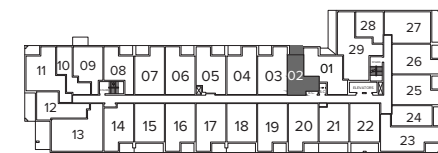
1S-C

STUDIO
 INTERIOR: 361 SQ.FT.
 EXTERIOR: 51 SQ.FT.
TOTAL: 412 SQ.FT.

LIVING/DINING/SLEEP 9'-0" x 20'-6"



FLOOR 6-7



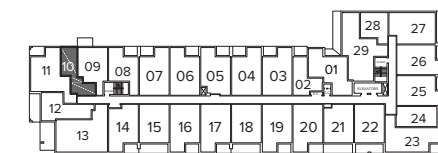
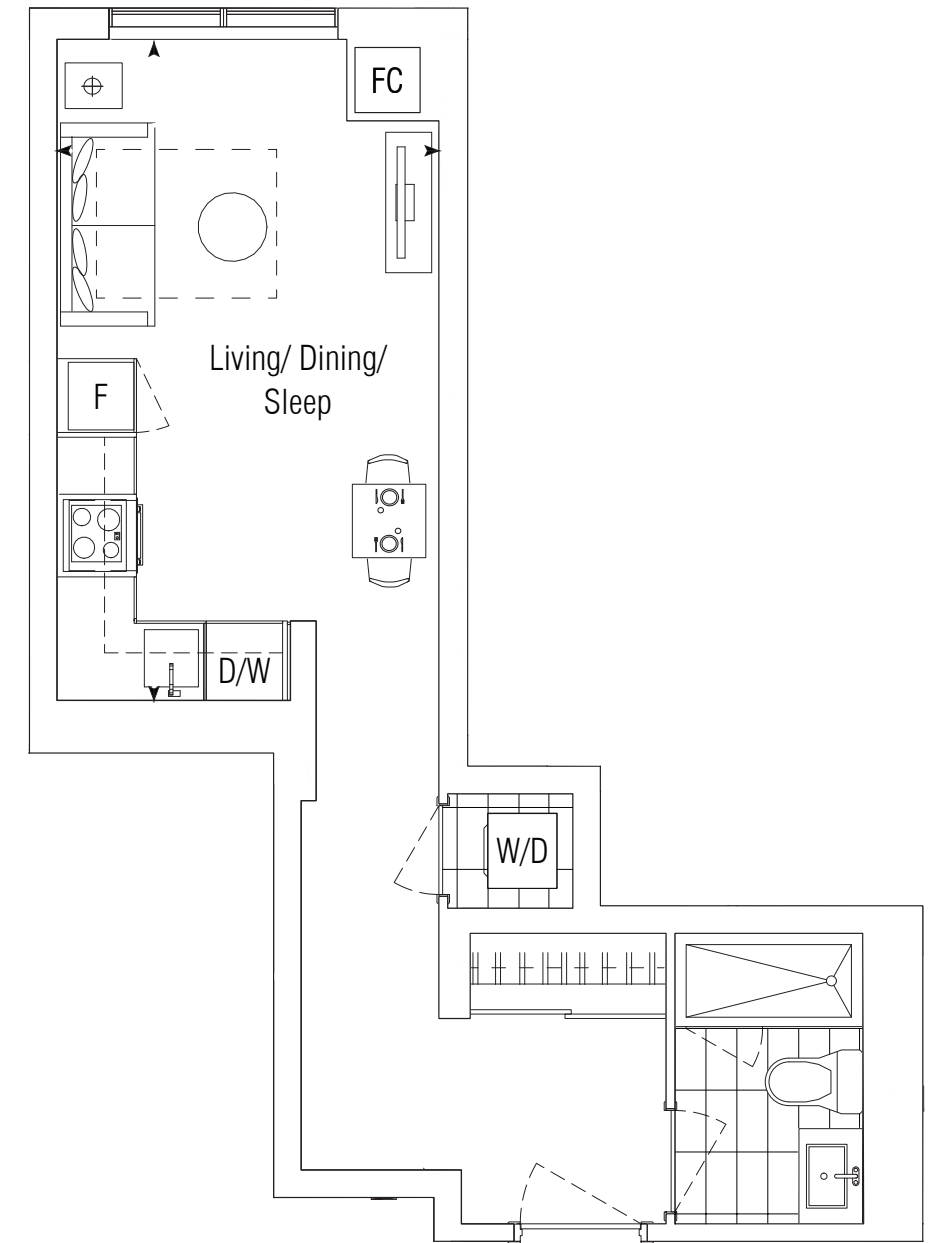
FLOOR 2-5

FLOORS 2-7

1S-D

STUDIO
 INTERIOR: 370 SQ.FT.
TOTAL: 370 SQ.FT.

LIVING/DINING/SLEEP 10'-0" x 17'-3"



FLOORS 2-5

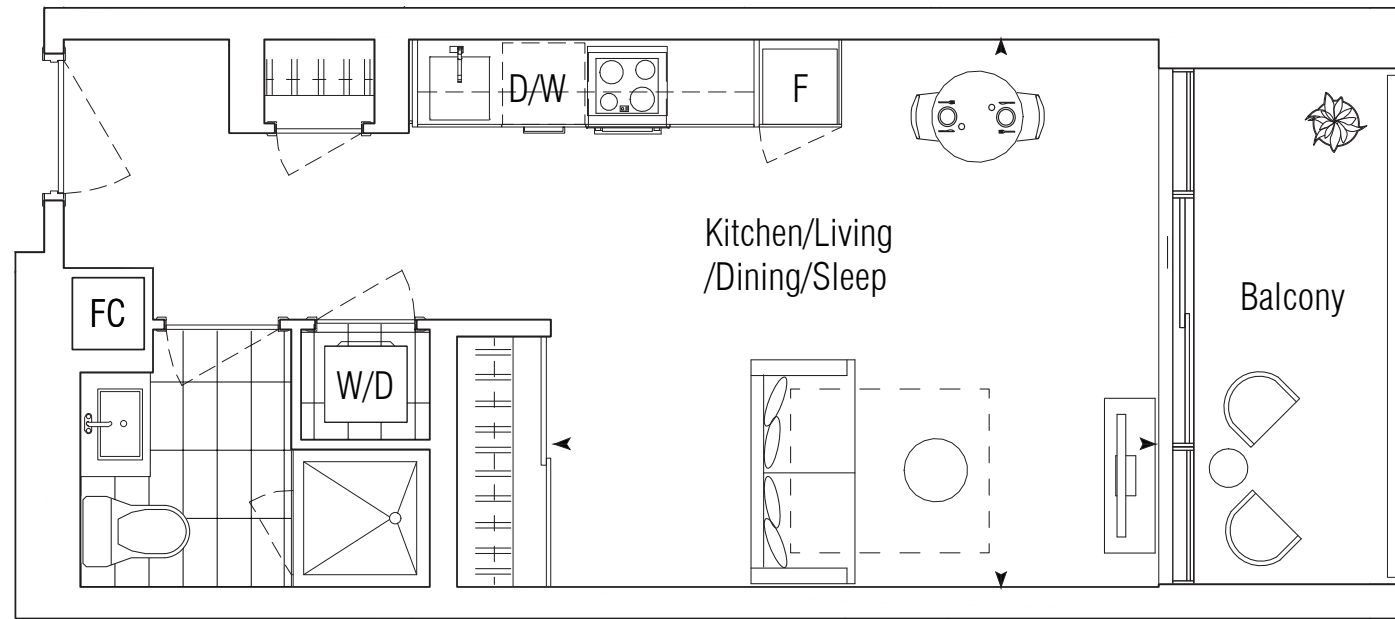
FLOORS 2-5

ALL DIMENSIONS AND SPECIFICATIONS ARE APPROXIMATE. CERTAIN PLANS ARE REVERSE OR MIRROR IMAGE. BALCONY SQUARE FOOTAGES ARE ESTIMATED AND MAY VARY FROM THAT STATED. PLEASE SEE SALES REPRESENTATIVE FOR DETAILS. FURNITURE NOT INCLUDED. REFER TO KEY PLAN FOR UNIT LOCATION AND ORIENTATION. PREPARED MAR 8, 2021

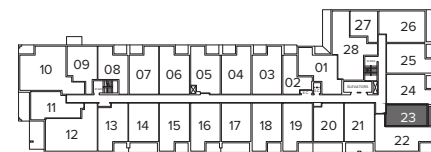
1S-E

STUDIO
 INTERIOR: 380 SQ.FT.
 EXTERIOR: 61 SQ.FT.
TOTAL: 441 SQ.FT.

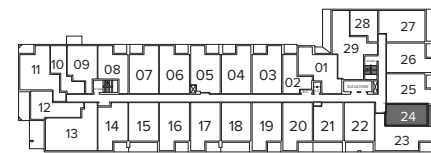
LIVING/DINING/SLEEP 14'-3" x 13'-0"



FLOORS 2-7



FLOORS 6-7

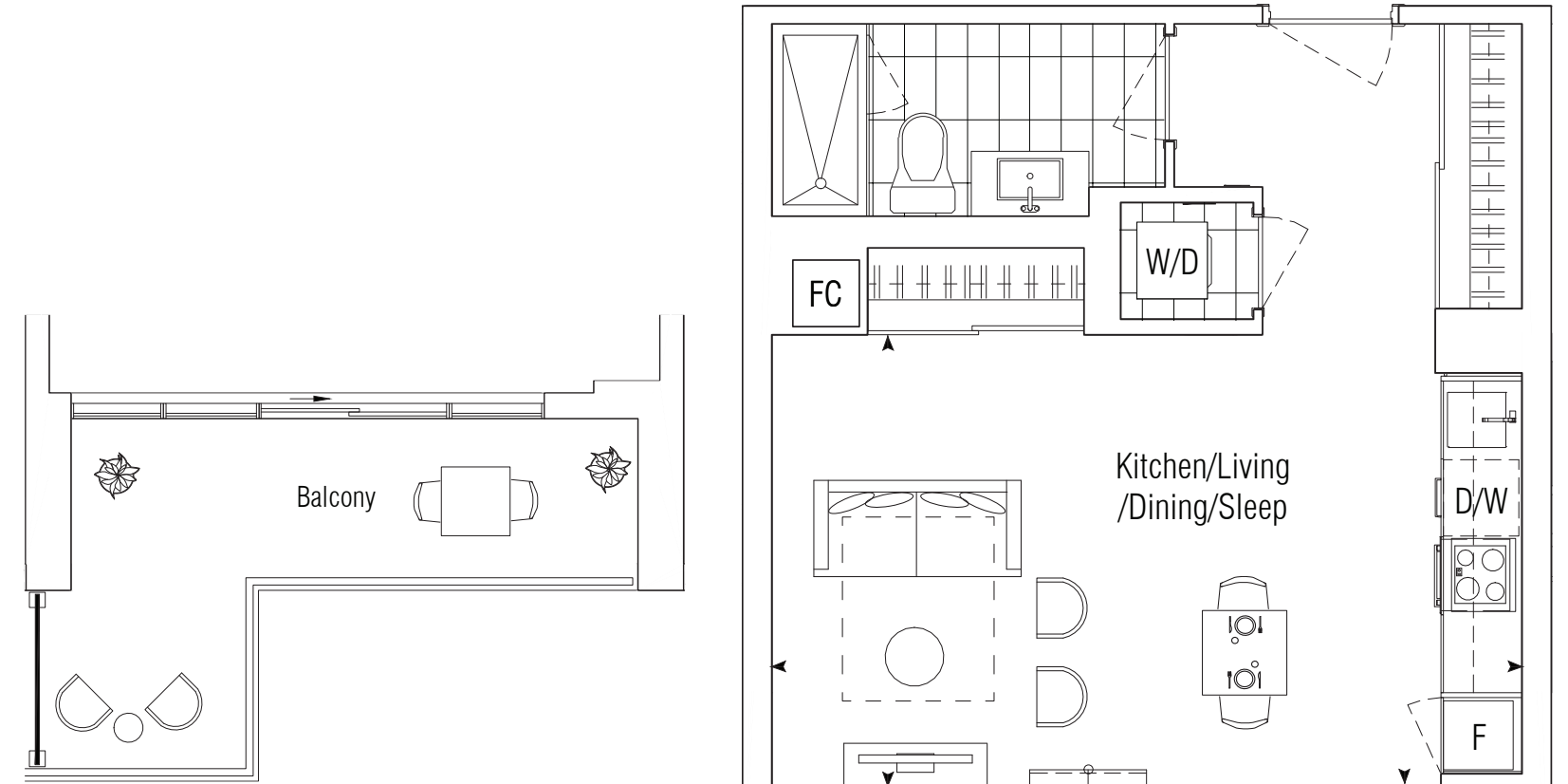


FLOORS 2-5

1S-F

STUDIO
 INTERIOR: 418 SQ.FT.
 EXTERIOR: 139 SQ.FT.
TOTAL: 557 SQ.FT.

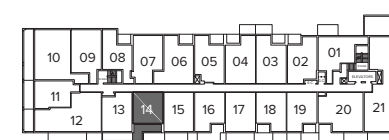
LIVING/DINING/SLEEP 19'-3" x 11'-6"



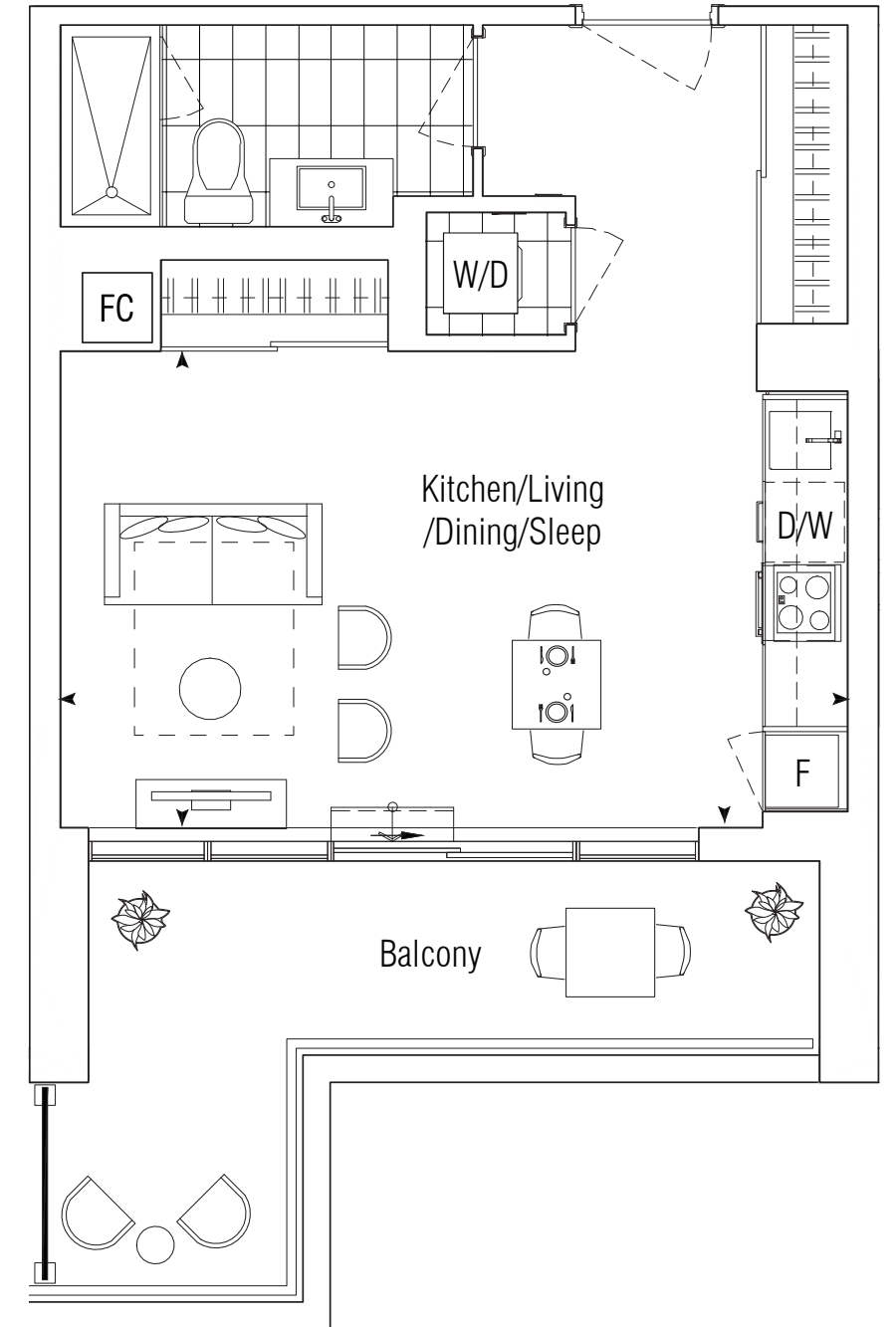
FLOOR 10



FLOOR 10



FLOOR 9



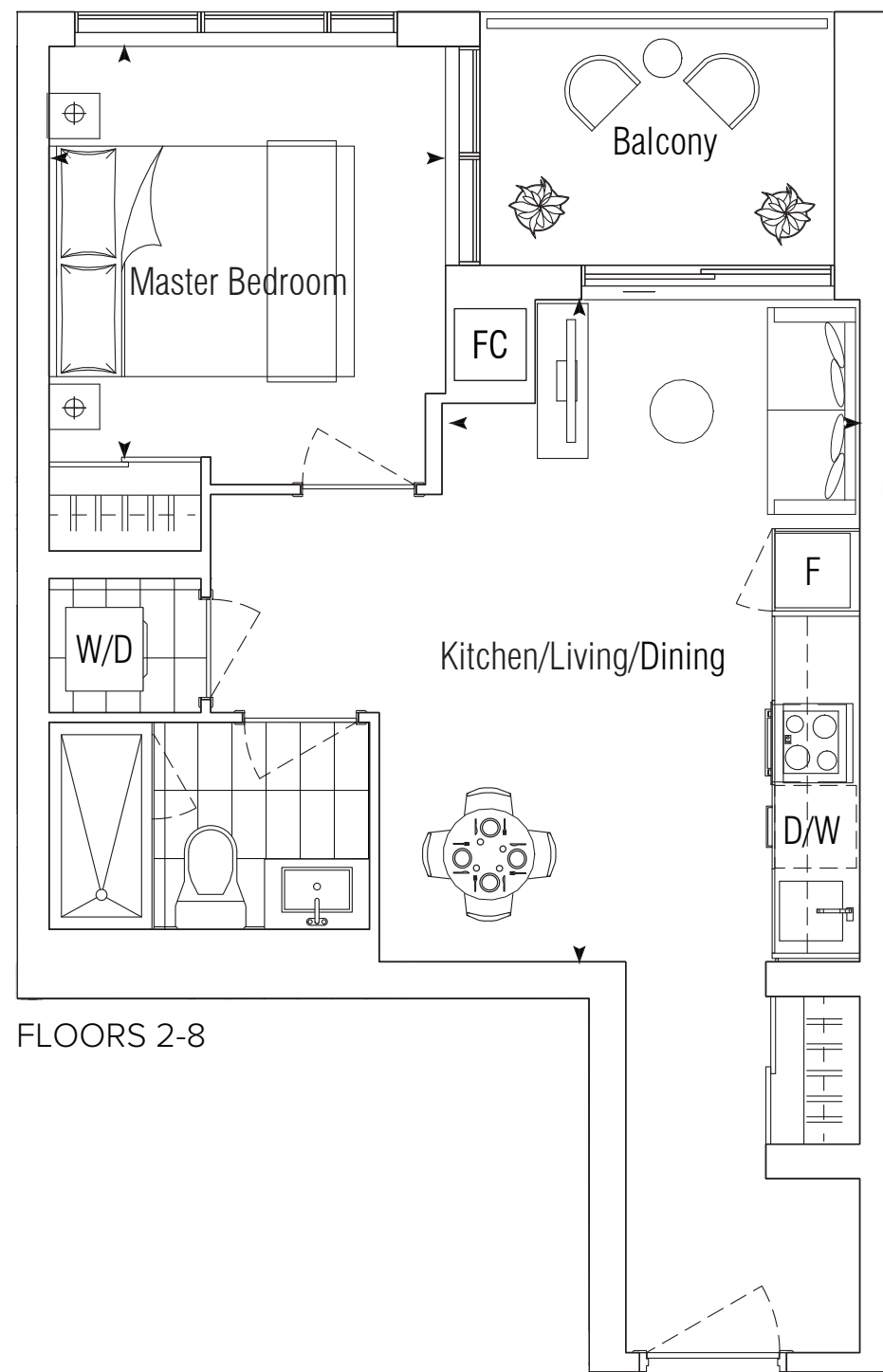
FLOOR 9

ALL DIMENSIONS AND SPECIFICATIONS ARE APPROXIMATE. CERTAIN PLANS ARE REVERSE OR MIRROR IMAGE. BALCONY SQUARE FOOTAGES ARE ESTIMATED AND MAY VARY FROM THAT STATED. PLEASE SEE SALES REPRESENTATIVE FOR DETAILS. FURNITURE NOT INCLUDED. REFER TO KEY PLAN FOR UNIT LOCATION AND ORIENTATION. PREPARED MAR 8, 2021

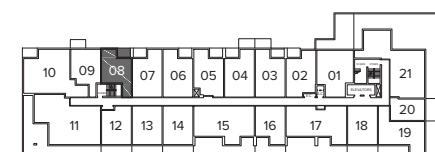
1A

1 BEDROOM
 INTERIOR: 473 SQ.FT.
 EXTERIOR: 51 SQ.FT.
TOTAL: 524 SQ.FT.

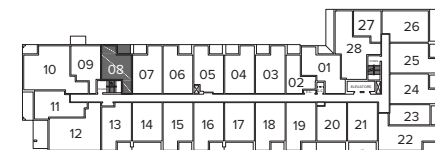
KITCHEN/LIVING/DINING 9'-9" x 15'-9"
 MASTER BEDROOM 9'-3" x 9'-9"



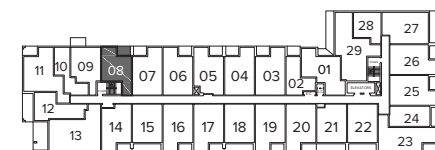
FLOORS 2-8



FLOOR 8



FLOORS 6-7

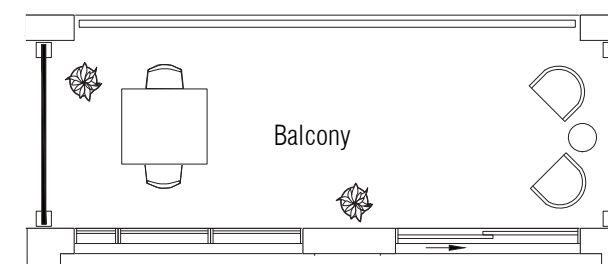


FLOORS 2-5

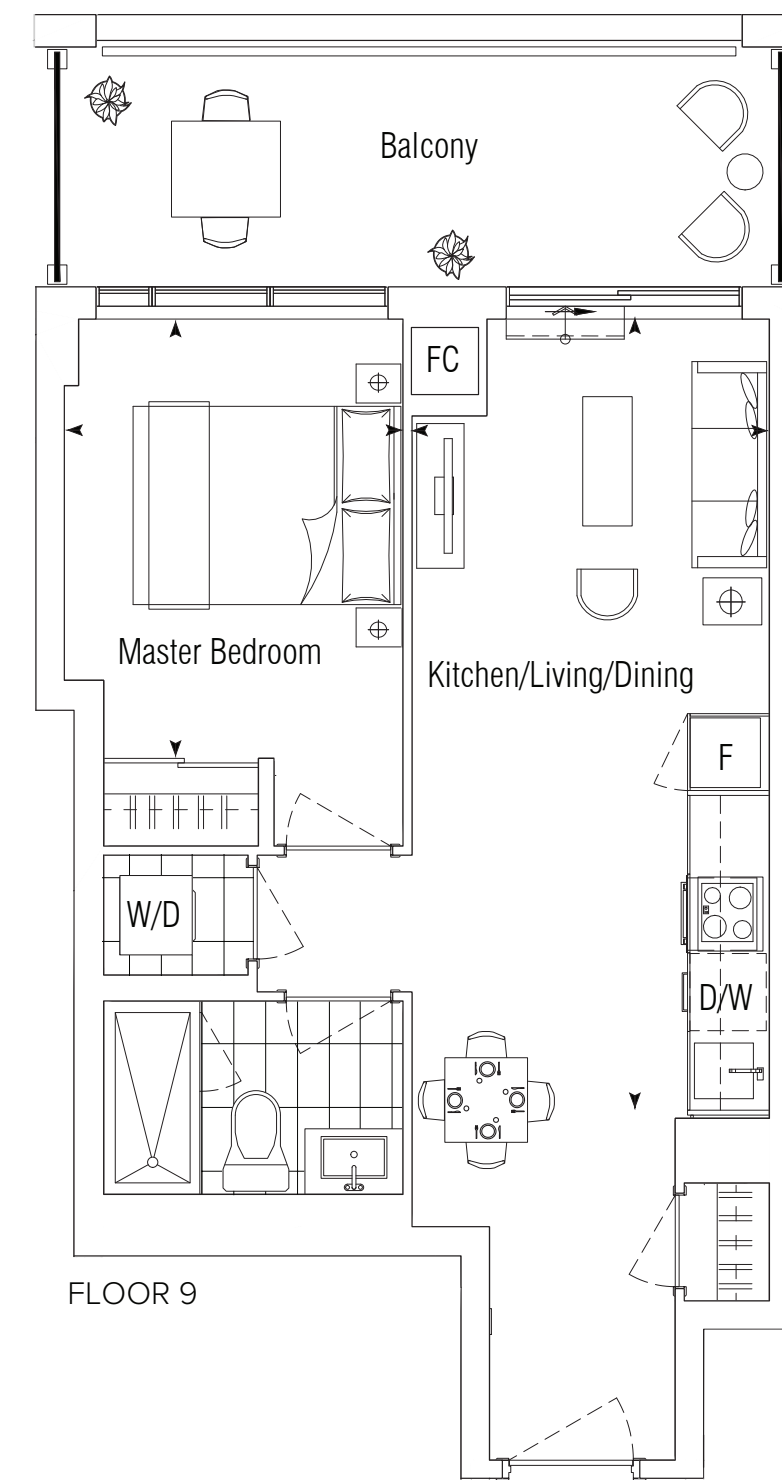
1B

1 BEDROOM
 INTERIOR: 476 SQ.FT.
 EXTERIOR: 127 SQ.FT.
TOTAL: 603 SQ.FT.

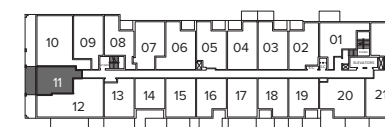
KITCHEN/LIVING/DINING 20'-3" x 9'-0"
 MASTER BEDROOM 11'-0" x 8'-6"



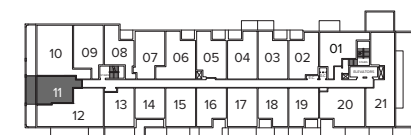
FLOOR 10



FLOOR 9



FLOOR 10



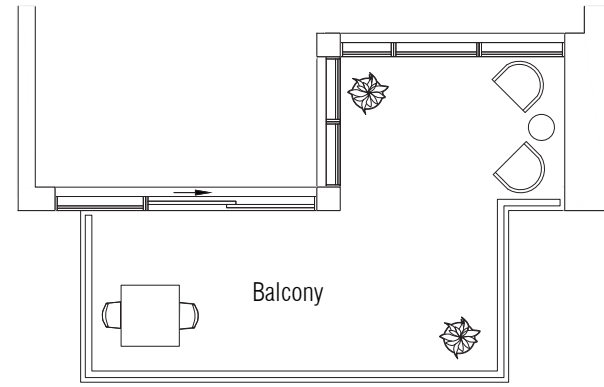
FLOOR 9

ALL DIMENSIONS AND SPECIFICATIONS ARE APPROXIMATE. CERTAIN PLANS ARE REVERSE OR MIRROR IMAGE. BALCONY SQUARE FOOTAGES ARE ESTIMATED AND MAY VARY FROM THAT STATED. PLEASE SEE SALES REPRESENTATIVE FOR DETAILS. FURNITURE NOT INCLUDED. REFER TO KEY PLAN FOR UNIT LOCATION AND ORIENTATION. PREPARED MAR 8, 2021

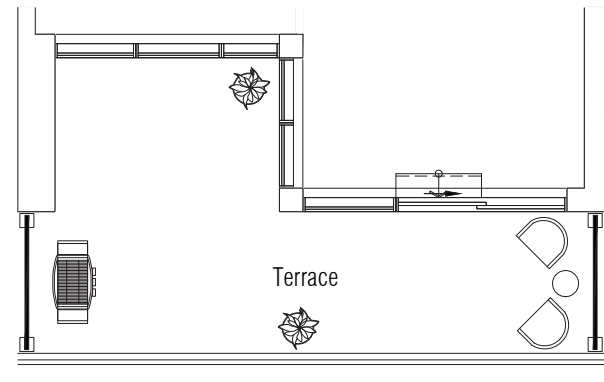
1C

1 BEDROOM
 INTERIOR: 478 SQ.FT.
 EXTERIOR: 98 SQ.FT.
TOTAL: 576 SQ.FT.

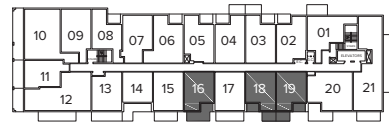
KITCHEN/LIVING/DINING 9'-9" x 20'-0"
 MASTER BEDROOM 9'-0" x 9'-6"



SUITE 916, 1016 - 133 SQ.FT.



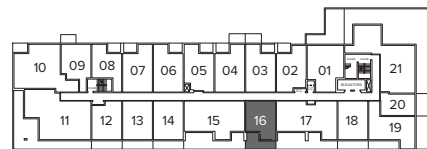
Suite 816 - 163 SQ.FT.



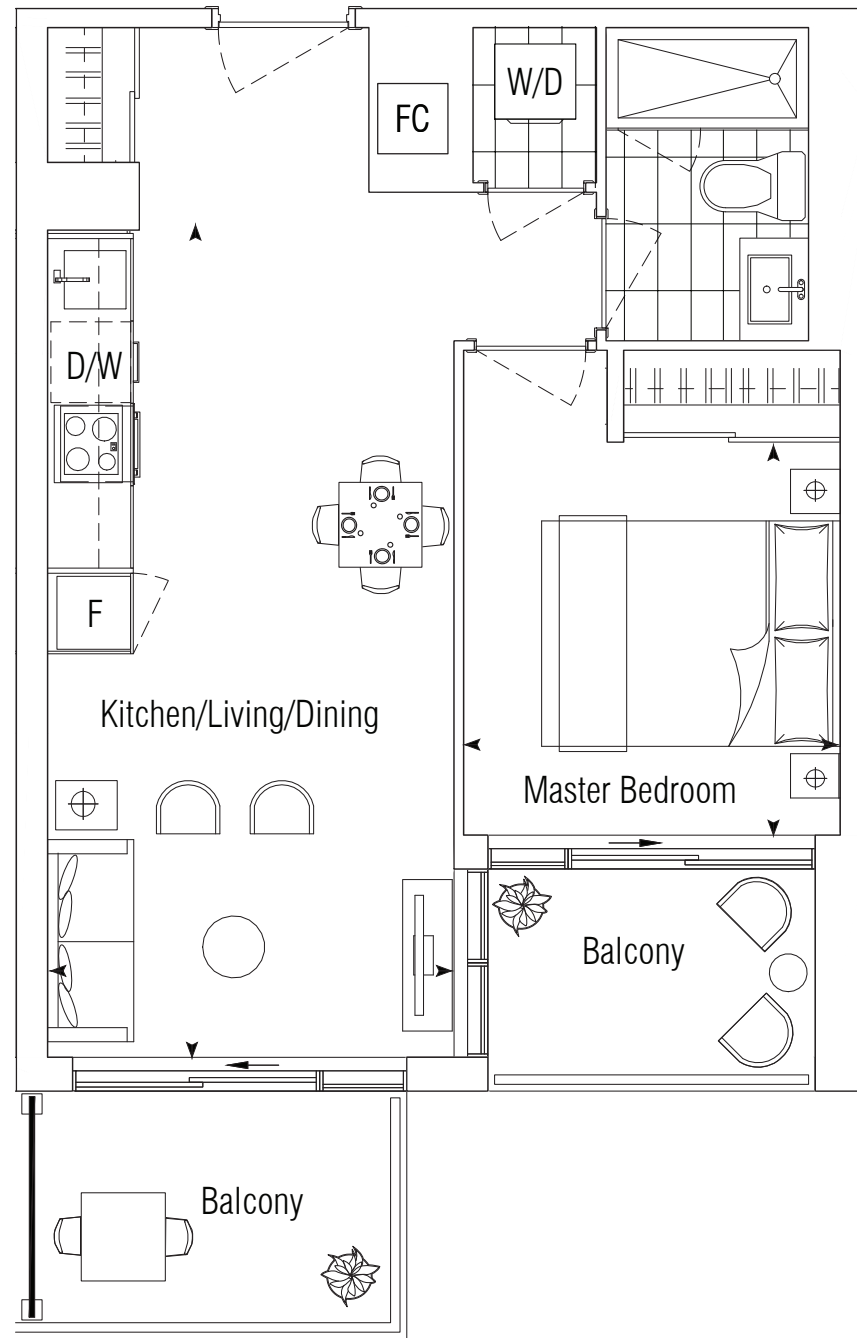
FLOOR 10



FLOOR 9



FLOOR 8

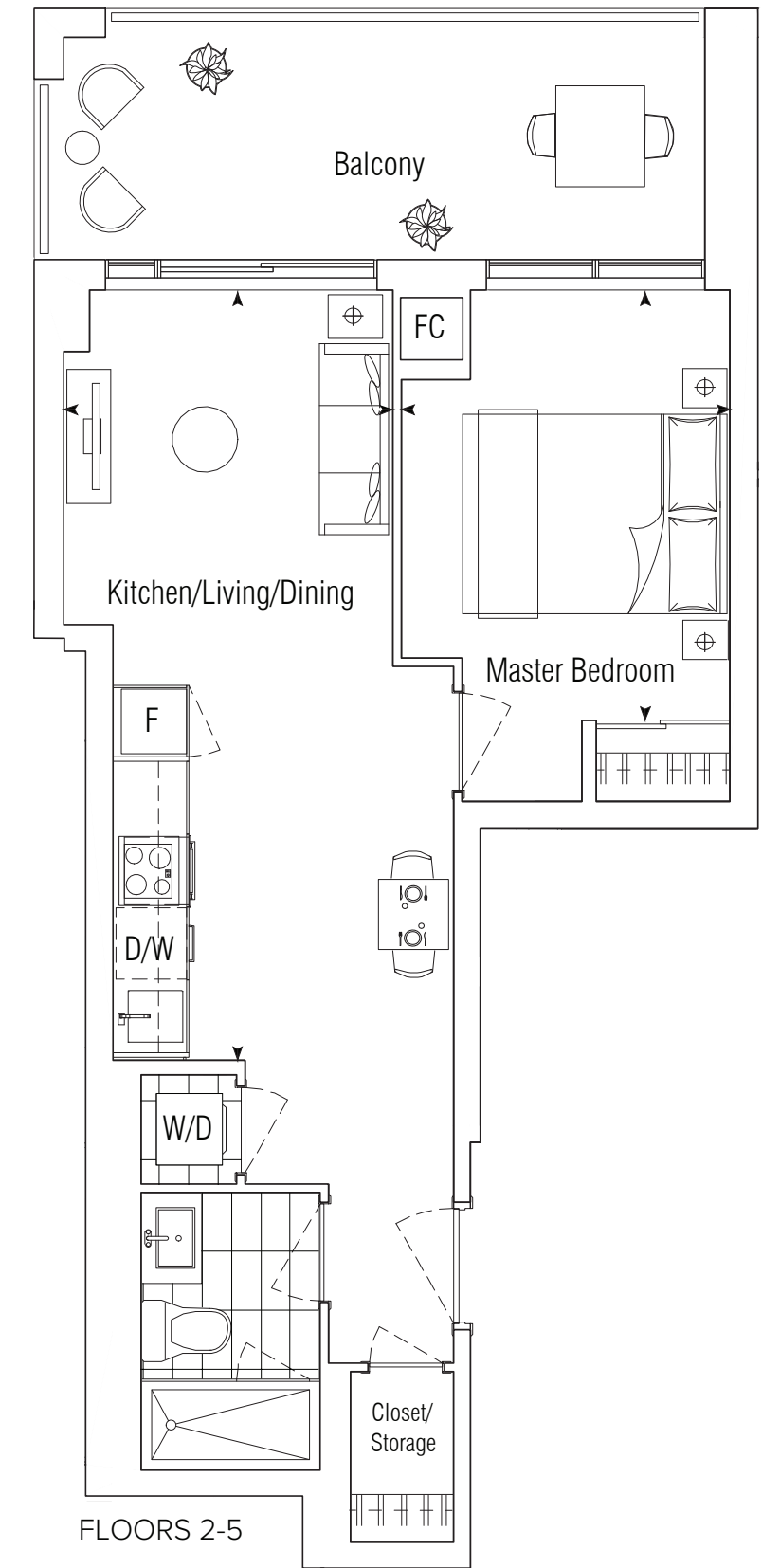


FLOORS 9-10

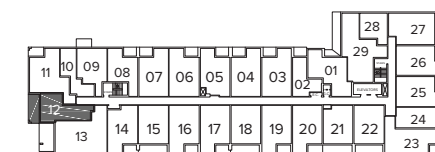
1D

1 BEDROOM
 INTERIOR: 482 SQ.FT.
 EXTERIOR: 127 SQ.FT.
TOTAL: 609 SQ.FT.

KITCHEN/LIVING/DINING 10'-9" x 19'-3"
 MASTER BEDROOM 11'-9" x 9'-0"



FLOORS 2-5



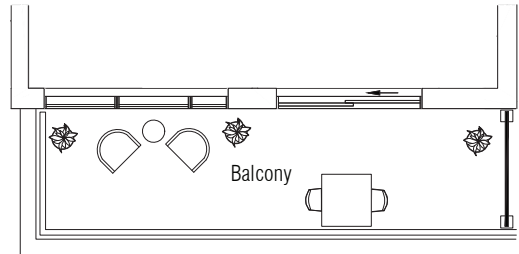
FLOORS 2-5

ALL DIMENSIONS AND SPECIFICATIONS ARE APPROXIMATE. CERTAIN PLANS ARE REVERSE OR MIRROR IMAGE. BALCONY SQUARE FOOTAGES ARE ESTIMATED AND MAY VARY FROM THAT STATED. PLEASE SEE SALES REPRESENTATIVE FOR DETAILS. FURNITURE NOT INCLUDED. REFER TO KEY PLAN FOR UNIT LOCATION AND ORIENTATION. PREPARED MAR 8, 2021

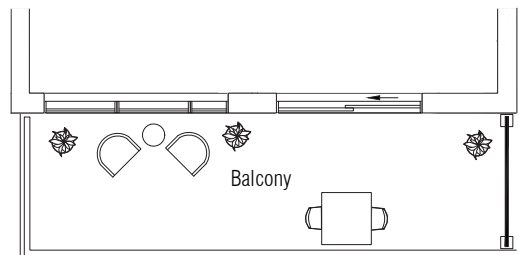
1E

1 BEDROOM
 INTERIOR: 504 SQ.FT.
 EXTERIOR: 121 SQ.FT.
TOTAL: 625 SQ.FT.

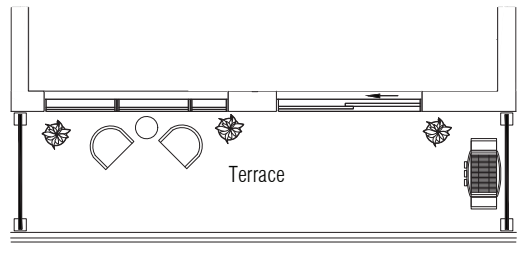
KITCHEN/LIVING/DINING 9'-9" x 20'-9"
 MASTER BEDROOM 9'-0" x 9'-6"



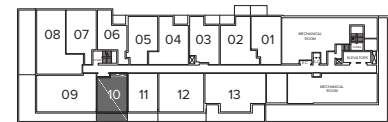
FLOOR 9



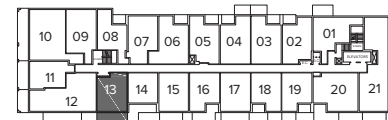
FLOOR 10



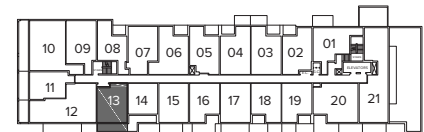
FLOOR 11



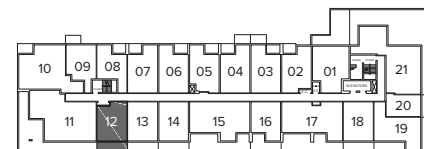
FLOOR 11



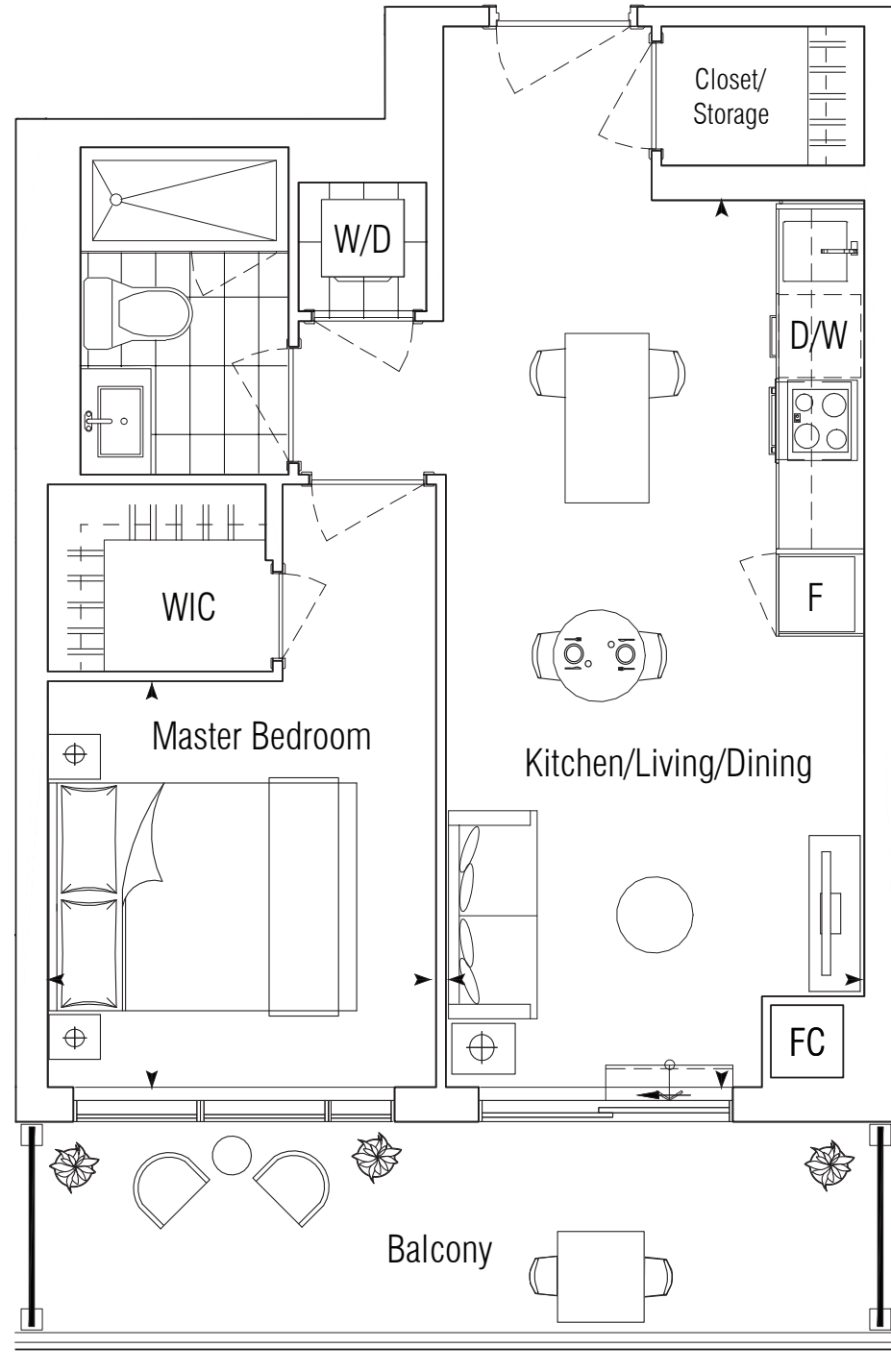
FLOOR 10



FLOOR 9



FLOOR 8

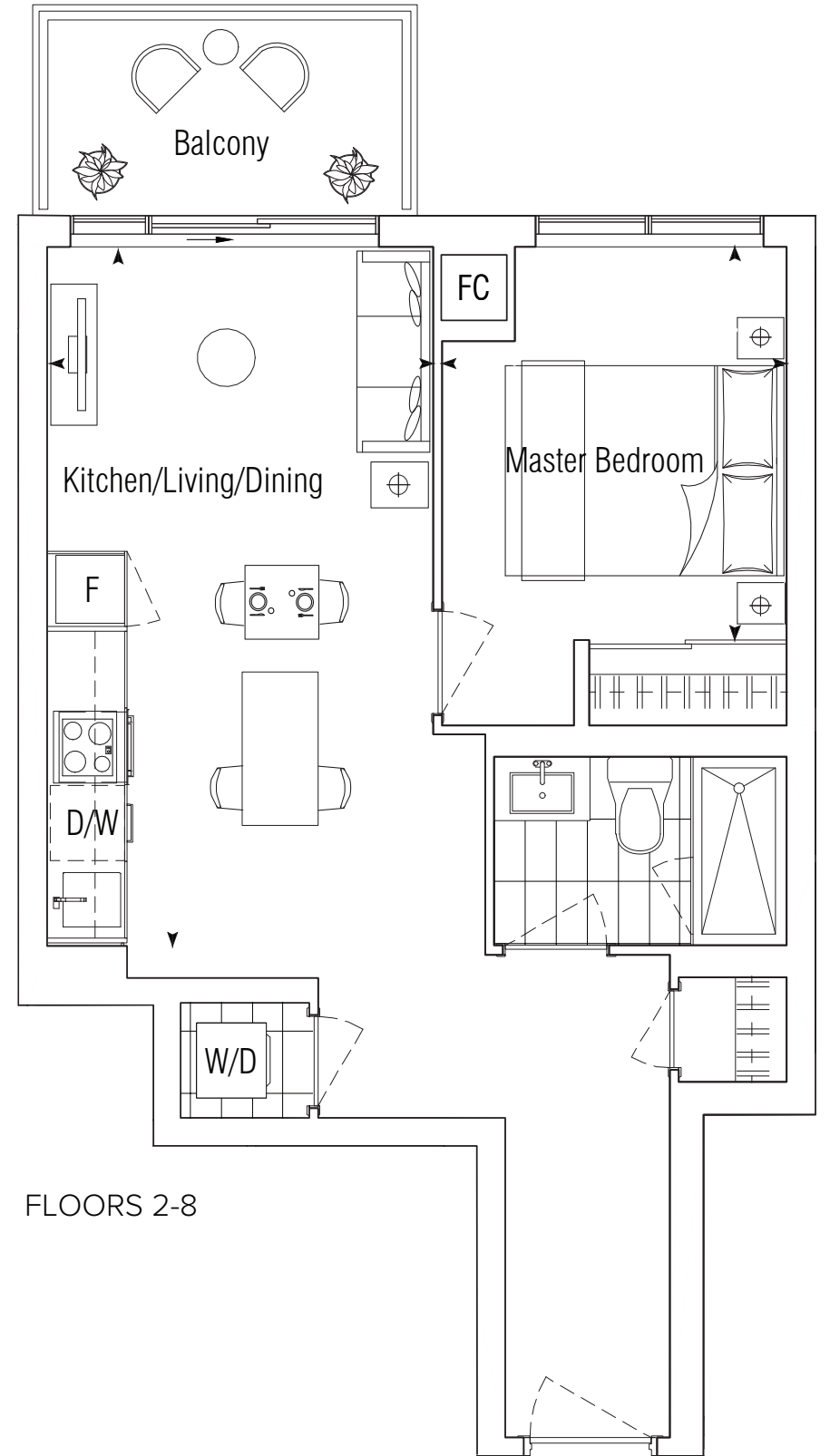


FLOOR 8

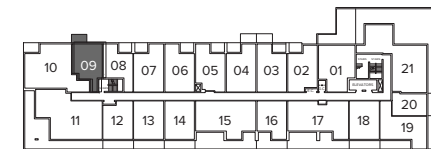
1F

1 BEDROOM
 INTERIOR: 511 SQ.FT.
 EXTERIOR: 55 SQ.FT.
TOTAL: 566 SQ.FT.

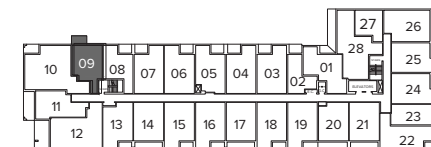
KITCHEN/LIVING/DINING 10'-0" x 18'-0"
 MASTER BEDROOM 9'-0" x 10'-3"



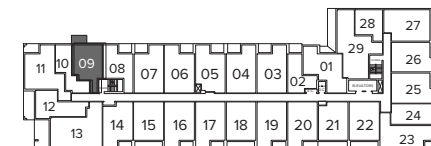
FLOORS 2-8



FLOOR 8



FLOORS 6-7



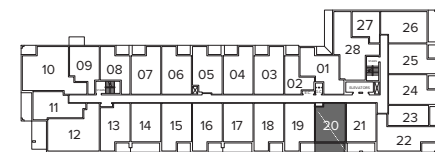
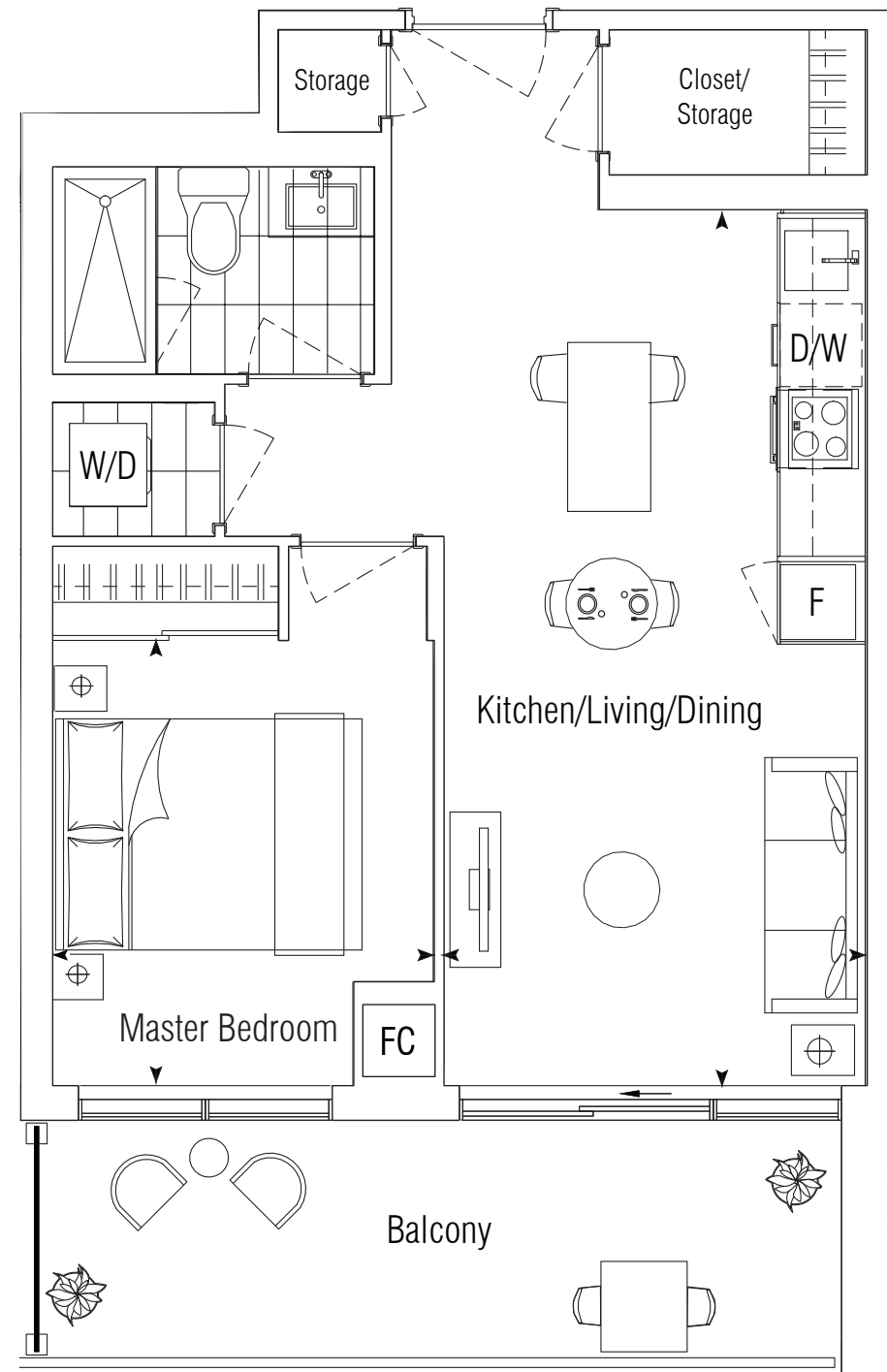
FLOORS 2-5



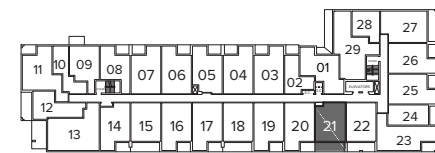
1G

1 BEDROOM
 INTERIOR: 514 SQ.FT.
 EXTERIOR: 115 SQ.FT.
TOTAL: 629 SQ.FT.

LIVING/DINING 10'-0" x 20'-9"
 MASTER BEDROOM 9'-0" x 10'-6"



FLOORS 6-7



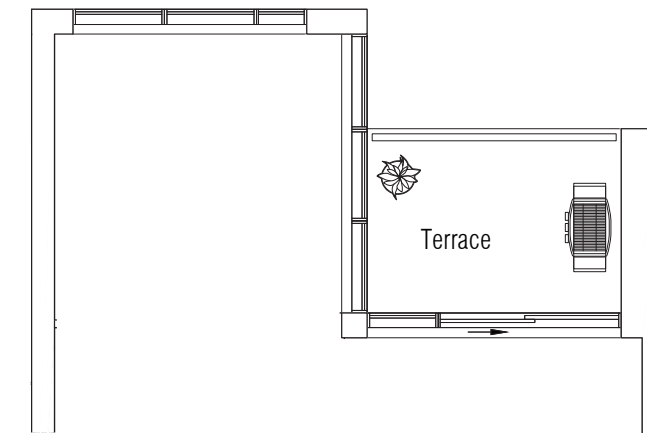
FLOORS 2-5

FLOORS 2-7

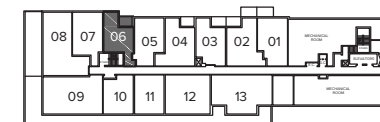
1H

1 BEDROOM
 INTERIOR: 514 SQ.FT.
 EXTERIOR: 50 SQ.FT.
TOTAL: 564 SQ.FT.

KITCHEN/LIVING/DINING 9'-9" x 15'-9"
 MASTER BEDROOM 9'-3" x 9'-3"



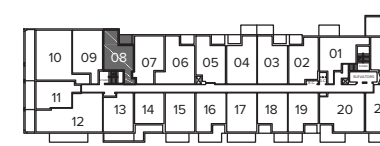
FLOOR 11



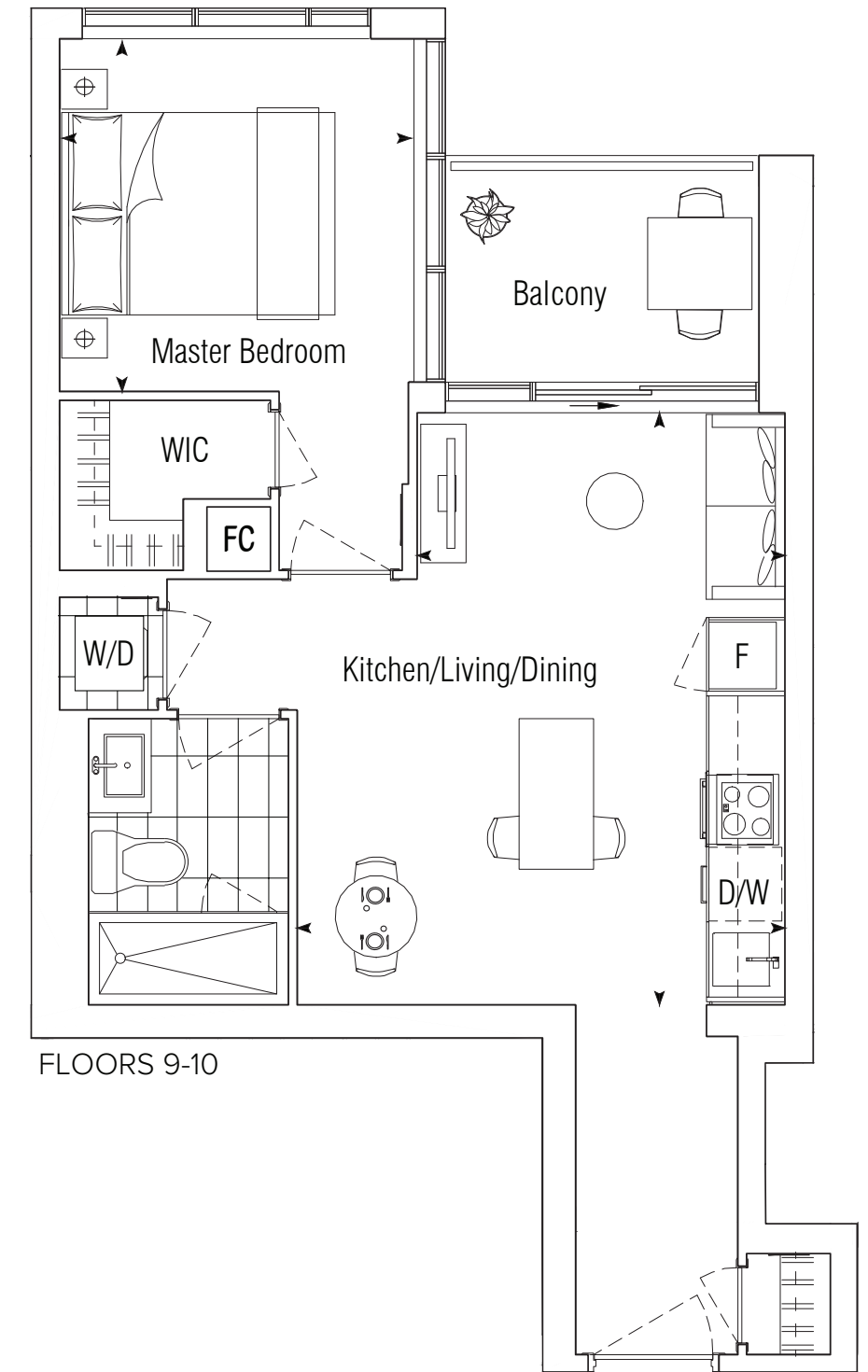
FLOOR 11



FLOOR 10



FLOOR 9



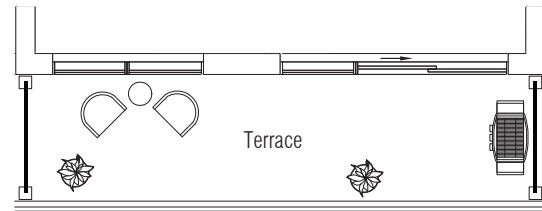
FLOORS 9-10

ALL DIMENSIONS AND SPECIFICATIONS ARE APPROXIMATE. CERTAIN PLANS ARE REVERSE OR MIRROR IMAGE. BALCONY SQUARE FOOTAGES ARE ESTIMATED AND MAY VARY FROM THAT STATED. PLEASE SEE SALES REPRESENTATIVE FOR DETAILS. FURNITURE NOT INCLUDED. REFER TO KEY PLAN FOR UNIT LOCATION AND ORIENTATION. PREPARED MAR 8, 2021

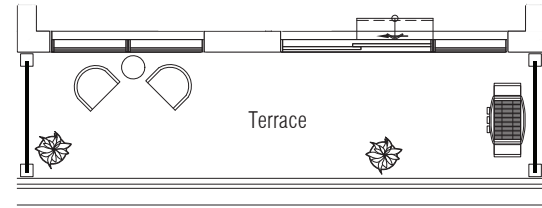
1I

1 BEDROOM
 INTERIOR: 526 SQ.FT.
 EXTERIOR: 111 SQ.FT.
TOTAL: 637 SQ.FT.

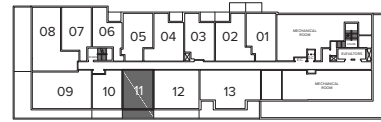
LIVING/DINING 10'-0" x 20'-9"
 MASTER BEDROOM 9'-0" x 10'-9"



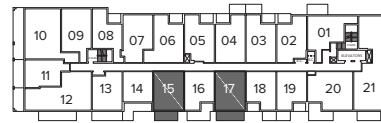
FLOOR 11 - 121 SQ.FT



SUITE 813, 818 - 121 SQ.FT



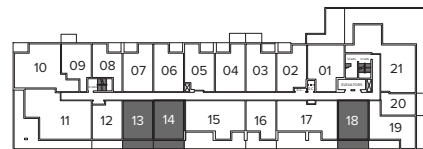
FLOOR 11



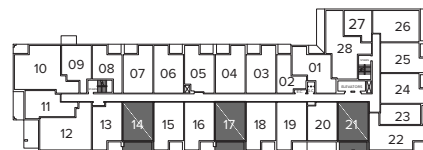
FLOOR 10



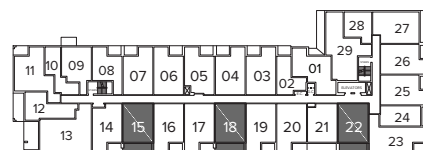
FLOOR 9



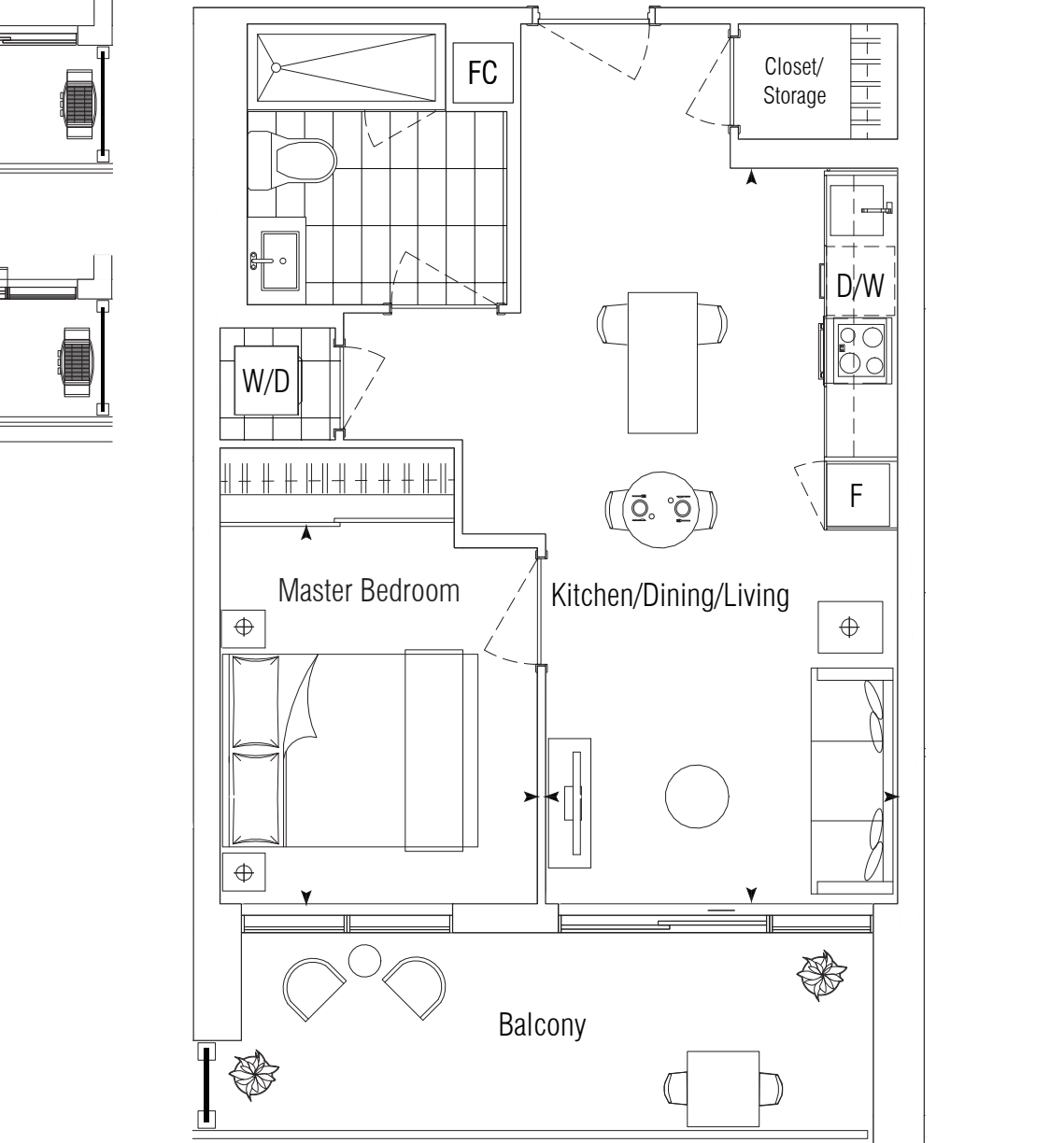
FLOOR 8



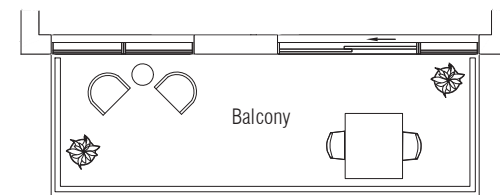
FLOORS 6-7



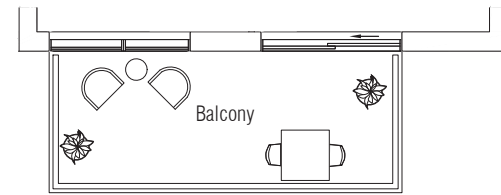
FLOORS 2-5



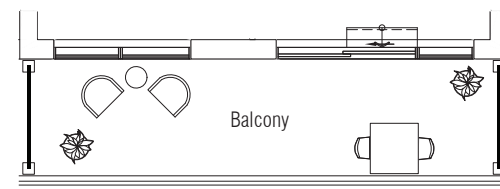
FLOORS 2-7



SUITE 917, 1017 - 110 SQ.FT



SUITE 915, 1015 - 90 SQ.FT

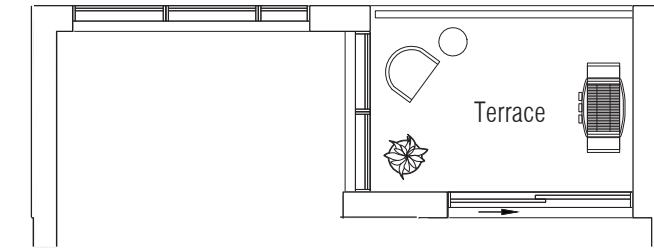


SUITE 814 - 121 SQ.FT

1B+D

1 BEDROOM + DEN
 INTERIOR: 560 SQ.FT.
 EXTERIOR: 51 SQ.FT.
TOTAL: 611 SQ.FT.

KITCHEN/LIVING/DINING 9'-9" x 20'-0"
 MASTER BEDROOM 9'-3" x 11'-9"
 DEN 8'-0" x 8'-0"



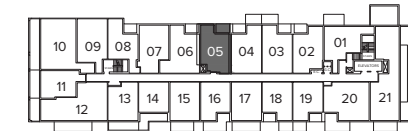
FLOOR 11



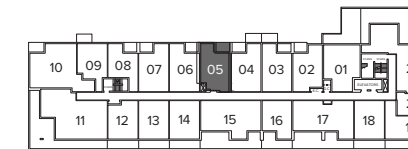
FLOOR 11



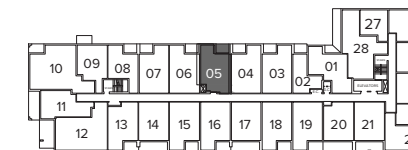
FLOOR 10



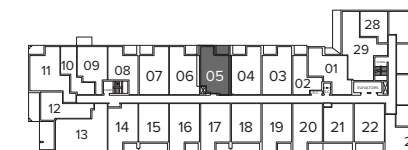
FLOOR 9



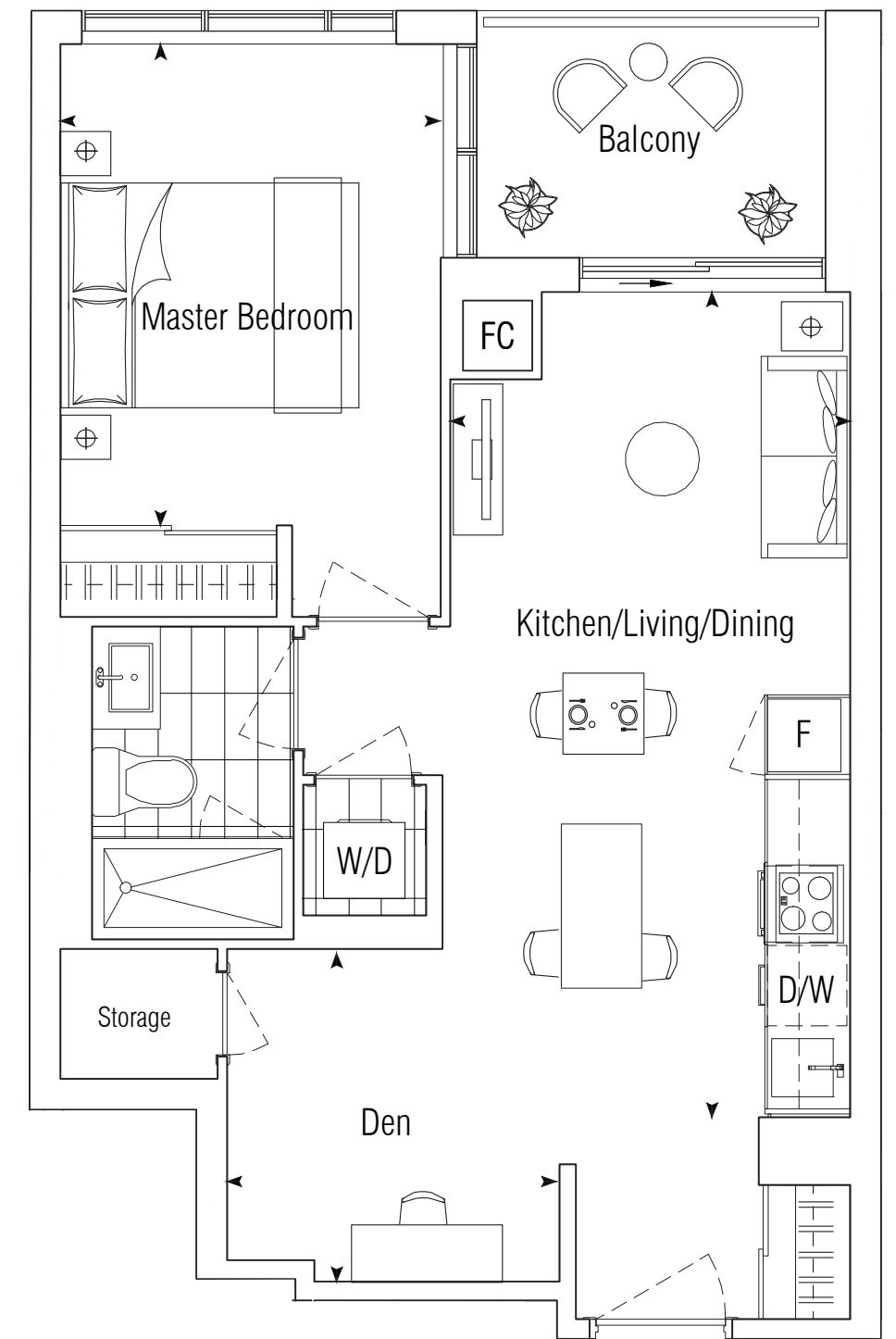
FLOOR 8



FLOORS 6-7



FLOORS 2-5



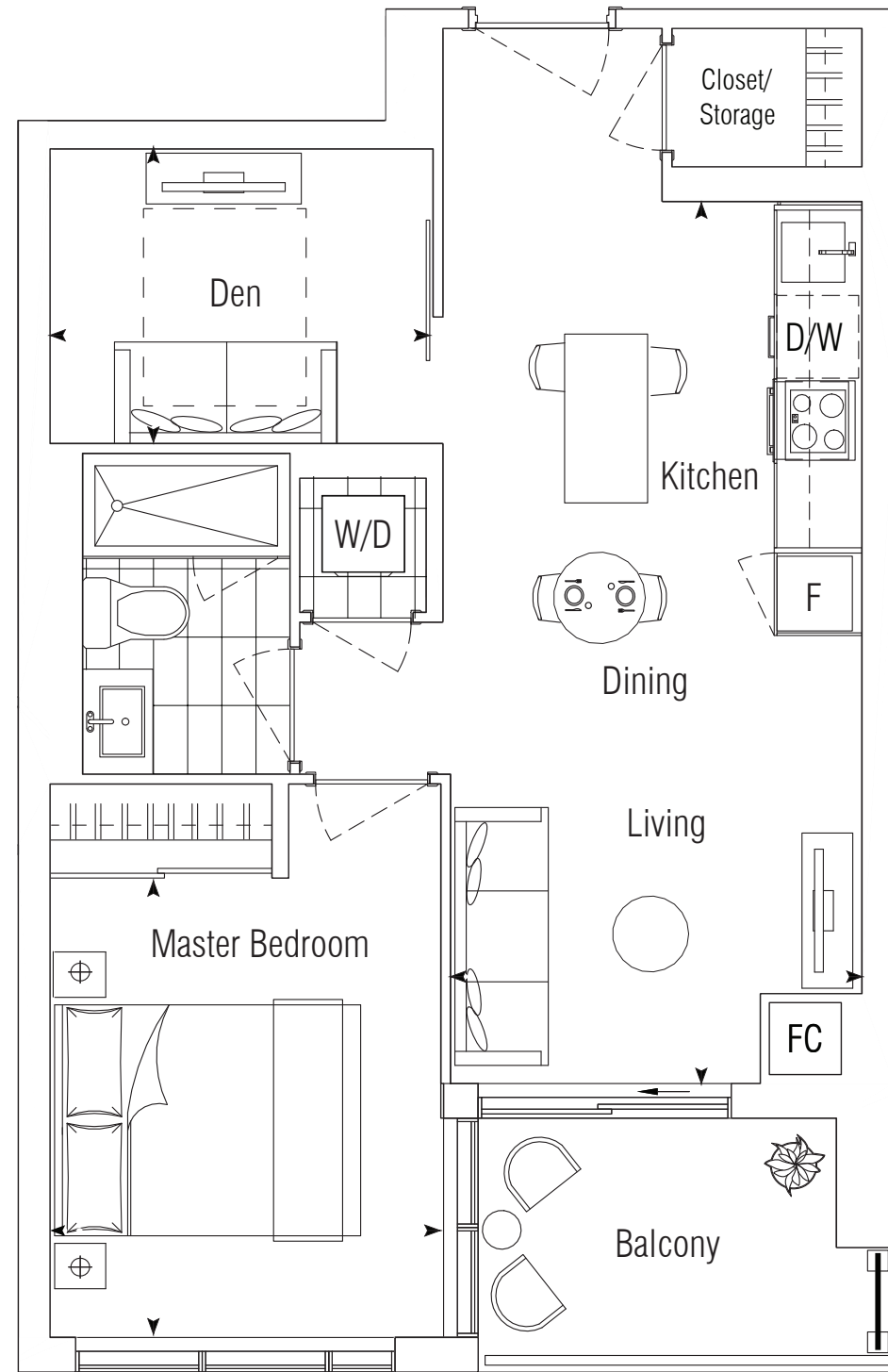
FLOORS 2-10

ALL DIMENSIONS AND SPECIFICATIONS ARE APPROXIMATE. CERTAIN PLANS ARE REVERSE OR MIRROR IMAGE. BALCONY SQUARE FOOTAGES ARE ESTIMATED AND MAY VARY FROM THAT STATED. PLEASE SEE SALES REPRESENTATIVE FOR DETAILS. FURNITURE NOT INCLUDED. REFER TO KEY PLAN FOR UNIT LOCATION AND ORIENTATION. PREPARED MAR 8, 2021

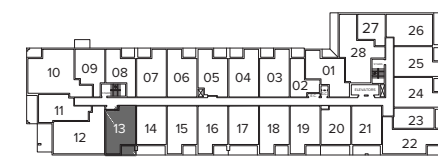
1D+D

1 BEDROOM + DEN
 INTERIOR: 568 SQ.FT.
 EXTERIOR: 54 SQ.FT.
TOTAL: 622 SQ.FT.

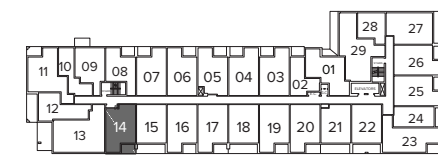
LIVING/DINING 9'-9" x 20'-9"
 MASTER BEDROOM 9'-3" x 10'-9"
 DEN 9'-0" x 7'-0"



FLOORS 2-7



FLOORS 6-7

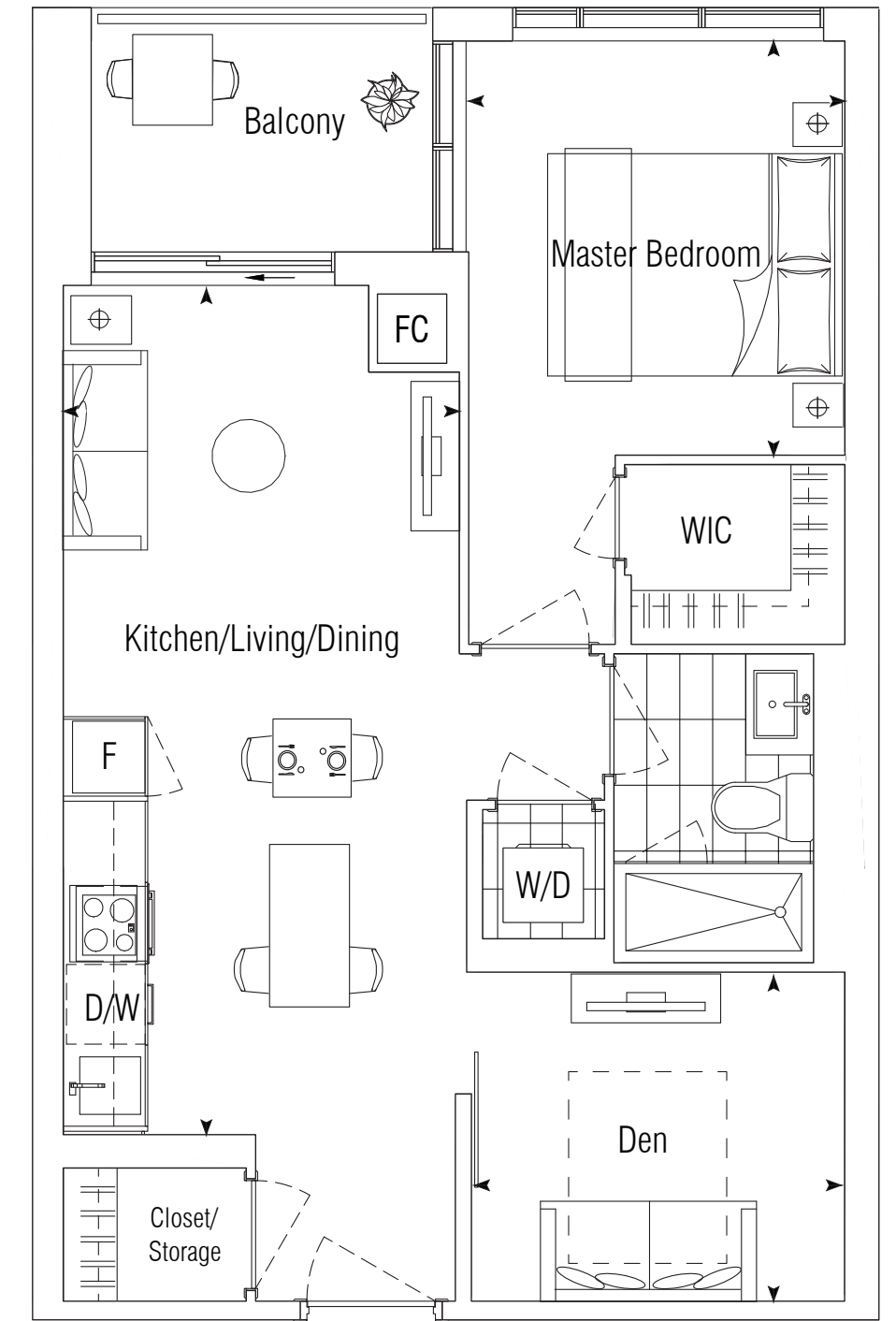


FLOORS 2-5

1F+D

1 BEDROOM + DEN
 INTERIOR: 590 SQ.FT.
 EXTERIOR: 51 SQ.FT.
TOTAL: 641 SQ.FT.

KITCHEN/LIVING/DINING 9'-9" x 20'-9"
 MASTER BEDROOM 9'-3" x 10'-3"
 DEN 9'-0" x 8'-0"



FLOORS 2-7



FLOOR 6-7



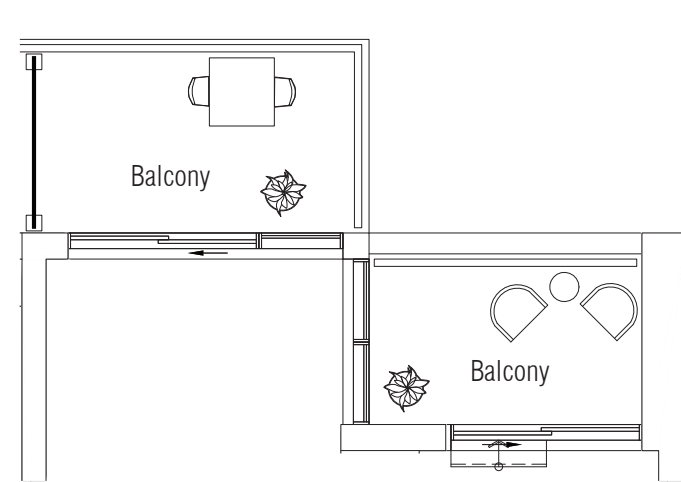
FLOOR 2-5

ALL DIMENSIONS AND SPECIFICATIONS ARE APPROXIMATE. CERTAIN PLANS ARE REVERSE OR MIRROR IMAGE. BALCONY SQUARE FOOTAGES ARE ESTIMATED AND MAY VARY FROM THAT STATED. PLEASE SEE SALES REPRESENTATIVE FOR DETAILS. FURNITURE NOT INCLUDED. REFER TO KEY PLAN FOR UNIT LOCATION AND ORIENTATION. PREPARED MAR 8, 2021

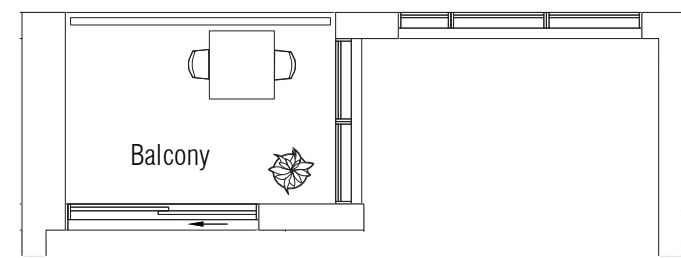
1F+D V2

1 BEDROOM + DEN
 INTERIOR: 590 SQ.FT.
 EXTERIOR: 51 SQ.FT. + 64 SQ.FT.
TOTAL: 705 SQ.FT.

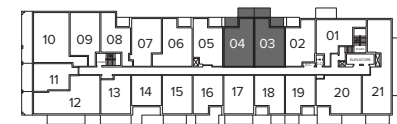
KITCHEN/LIVING/DINING 9'-9" x 20'-9"
 MASTER BEDROOM 9'-3" x 10'-3"
 DEN 9'-0" x 8'-0"



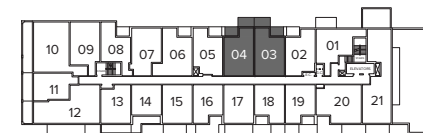
UNIT 803 - 51 SQ.FT.+ 64 SQ.FT.



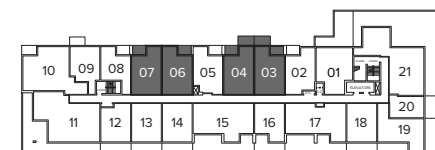
UNIT 806, 807 - 51 SQ.FT.



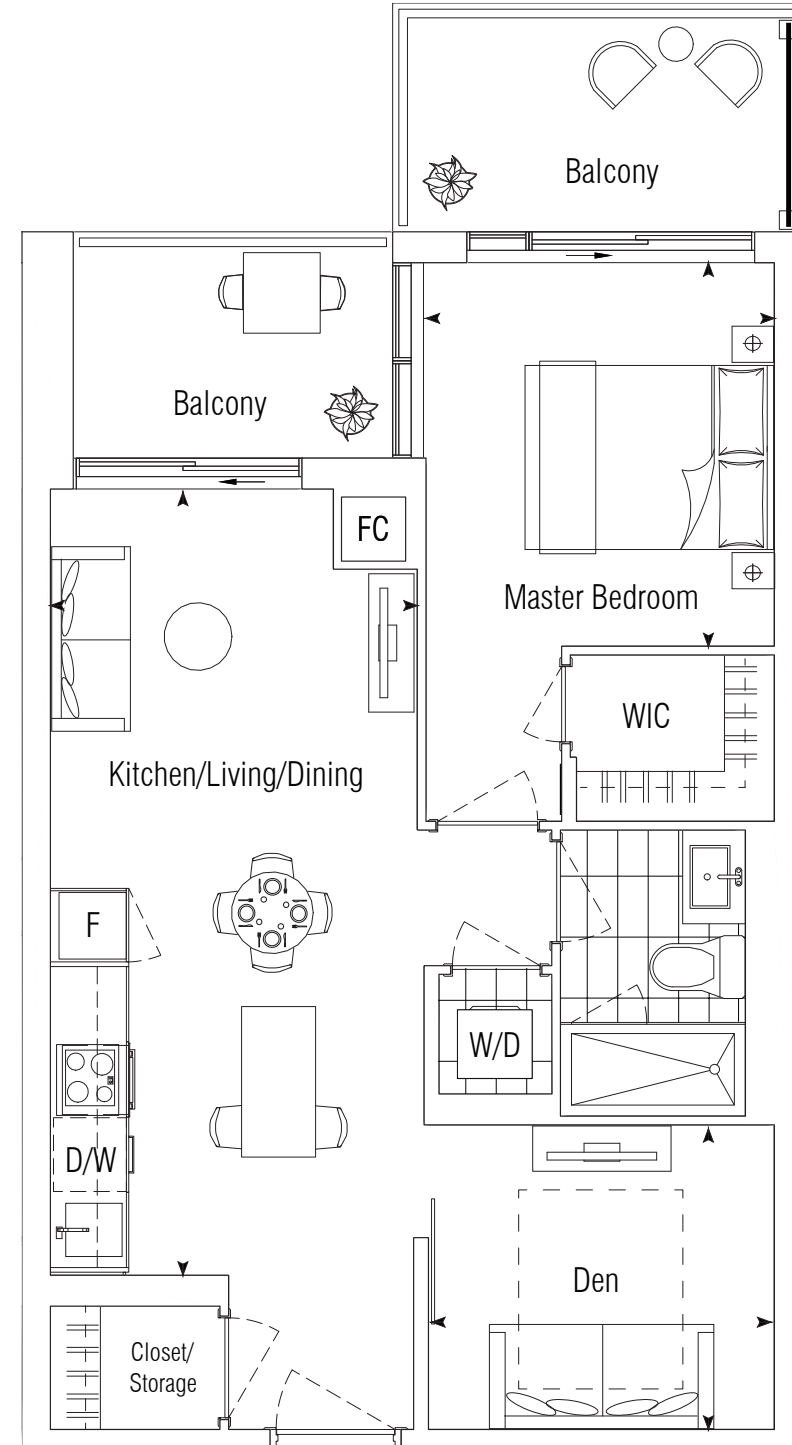
FLOOR 10



FLOOR 9



FLOOR 8

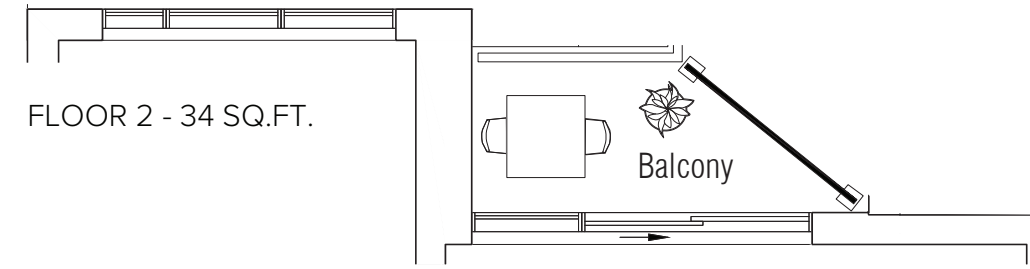


FLOORS 8-10

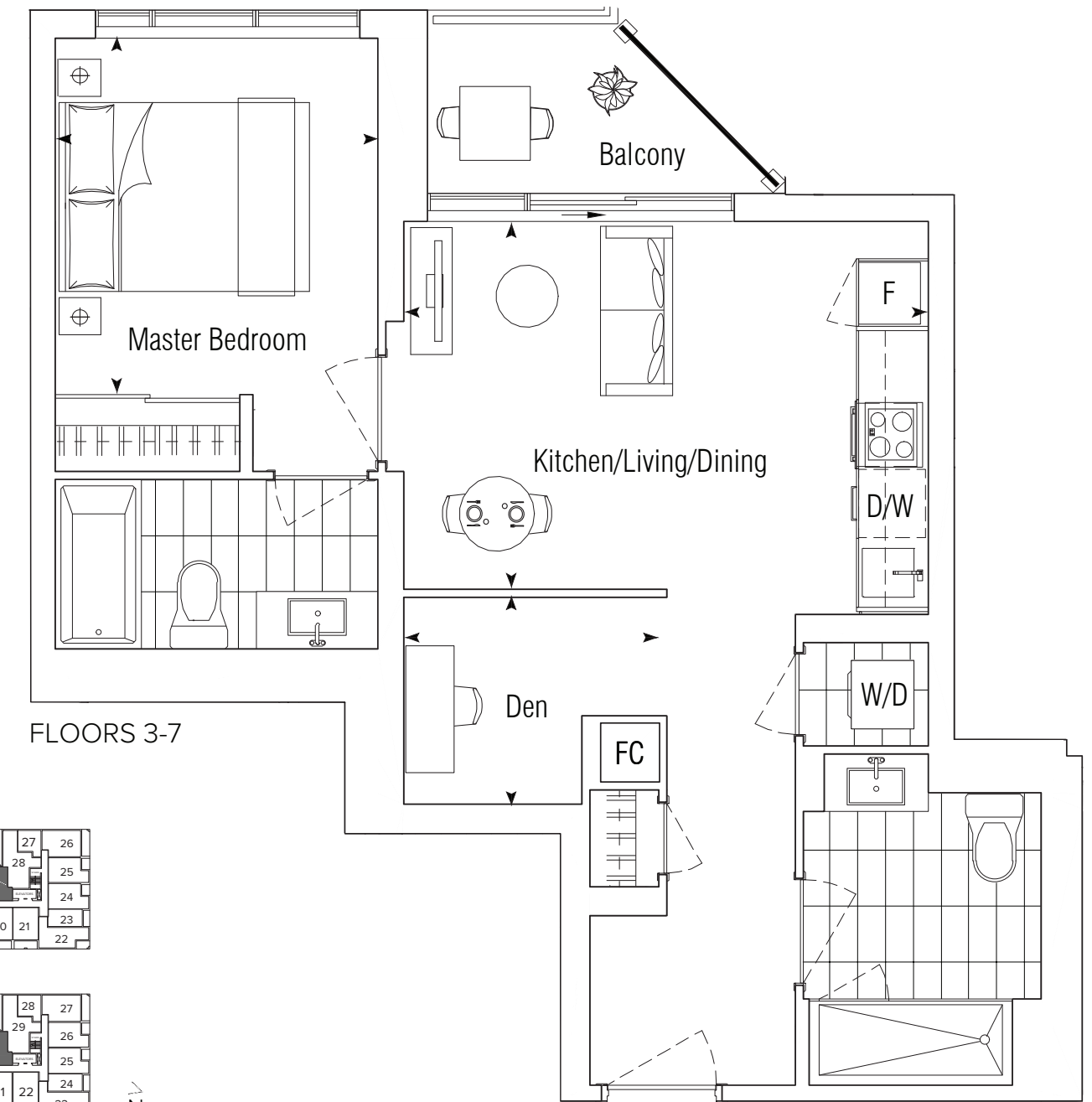
1I+D

1 BEDROOM + DEN
 INTERIOR: 626 SQ.FT.
 EXTERIOR: 42 SQ.FT.
TOTAL: 668 SQ.FT.

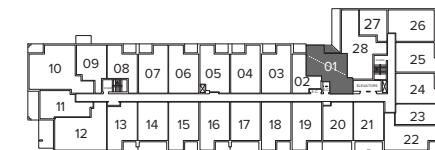
LIVING/DINING 15'-0" x 10'-6"
 MASTER BEDROOM 9'-3" x 10'-3"
 DEN 7'-3" x 6'-0"



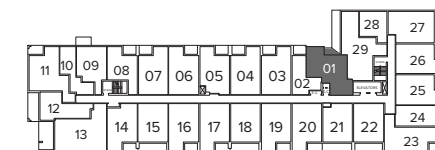
FLOOR 2 - 34 SQ.FT.



FLOORS 3-7



FLOORS 6-7



FLOORS 2-5

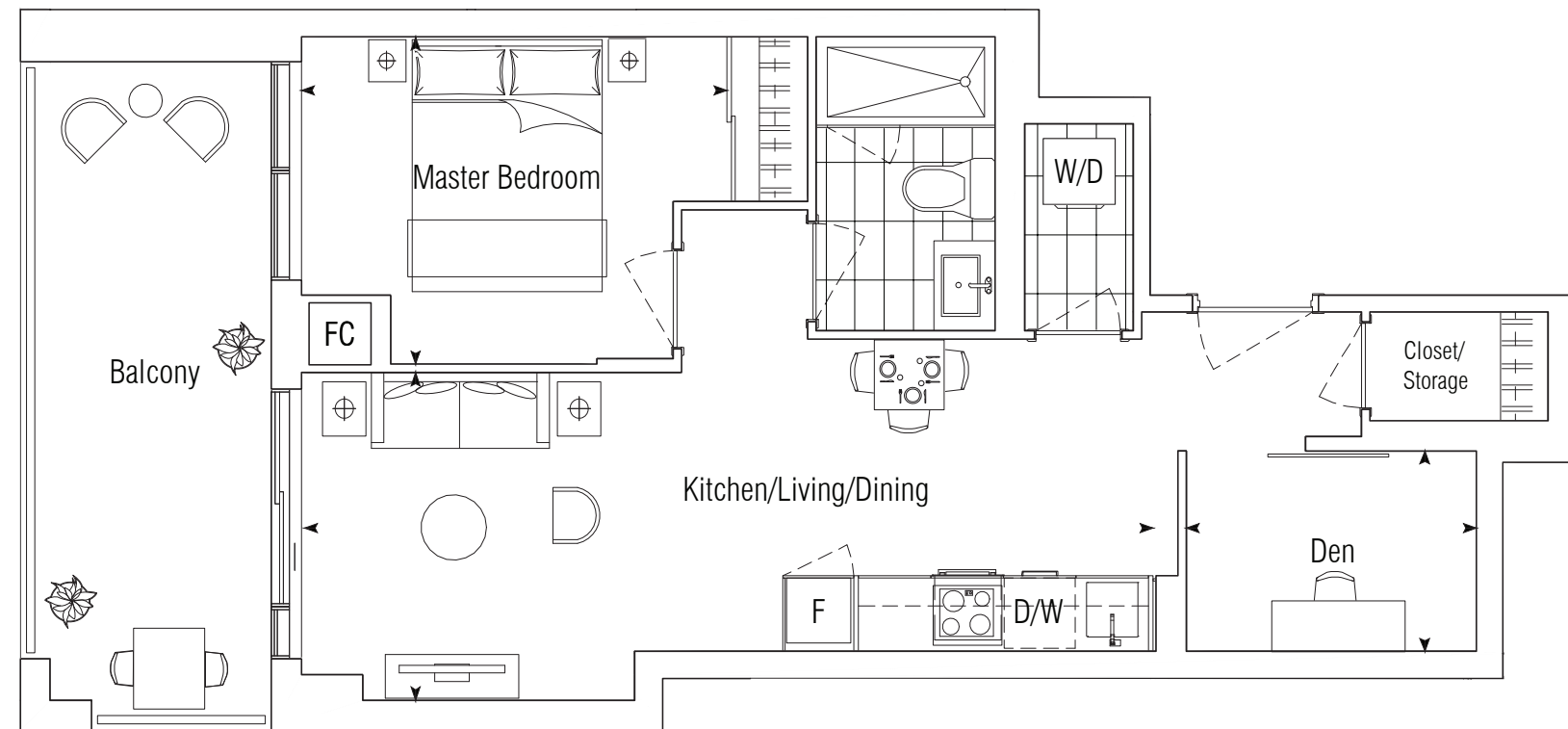


ALL DIMENSIONS AND SPECIFICATIONS ARE APPROXIMATE. CERTAIN PLANS ARE REVERSE OR MIRROR IMAGE. BALCONY SQUARE FOOTAGES ARE ESTIMATED AND MAY VARY FROM THAT STATED. PLEASE SEE SALES REPRESENTATIVE FOR DETAILS. FURNITURE NOT INCLUDED. REFER TO KEY PLAN FOR UNIT LOCATION AND ORIENTATION. PREPARED MAR 8, 2021

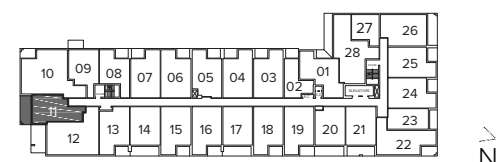
1A+D

1 BEDROOM + DEN
 INTERIOR: 542 SQ.FT.
 EXTERIOR: 127 SQ.FT.
TOTAL: 669 SQ.FT.

KITCHEN/LIVING/DINING 23'-3" x 9'-0"
 MASTER BEDROOM 11'-9" x 9'-0"
 DEN 8'-0" x 5'-6"



FLOORS 6-7

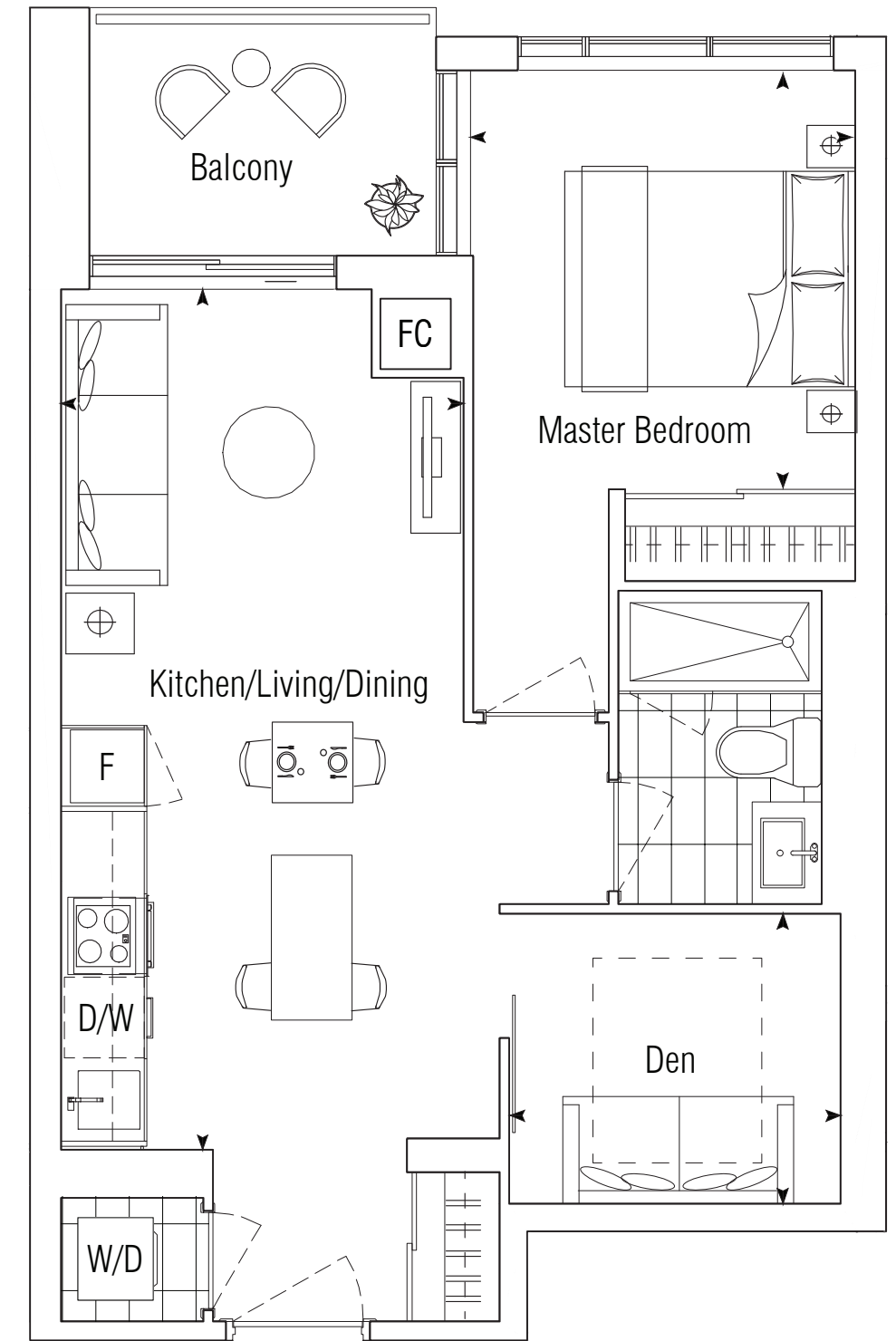


FLOORS 6-7

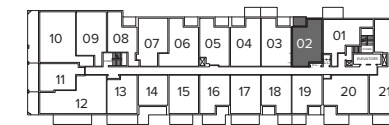
1C+D

1 BEDROOM + DEN
 INTERIOR: 562 SQ.FT.
 EXTERIOR: 51 SQ.FT.
TOTAL: 613 SQ.FT.

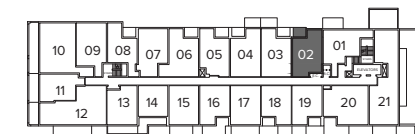
KITCHEN/LIVING/DINING 9'-9" x 20'-9"
 MASTER BEDROOM 9'-3" x 10'-0"
 DEN 8'-0" x 7'-0"



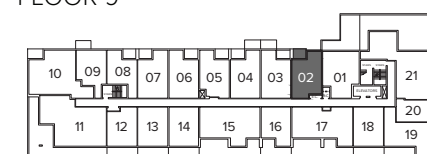
FLOORS 8-10



FLOOR 10



FLOOR 9



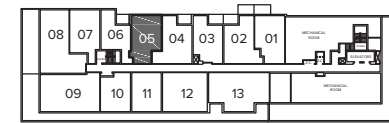
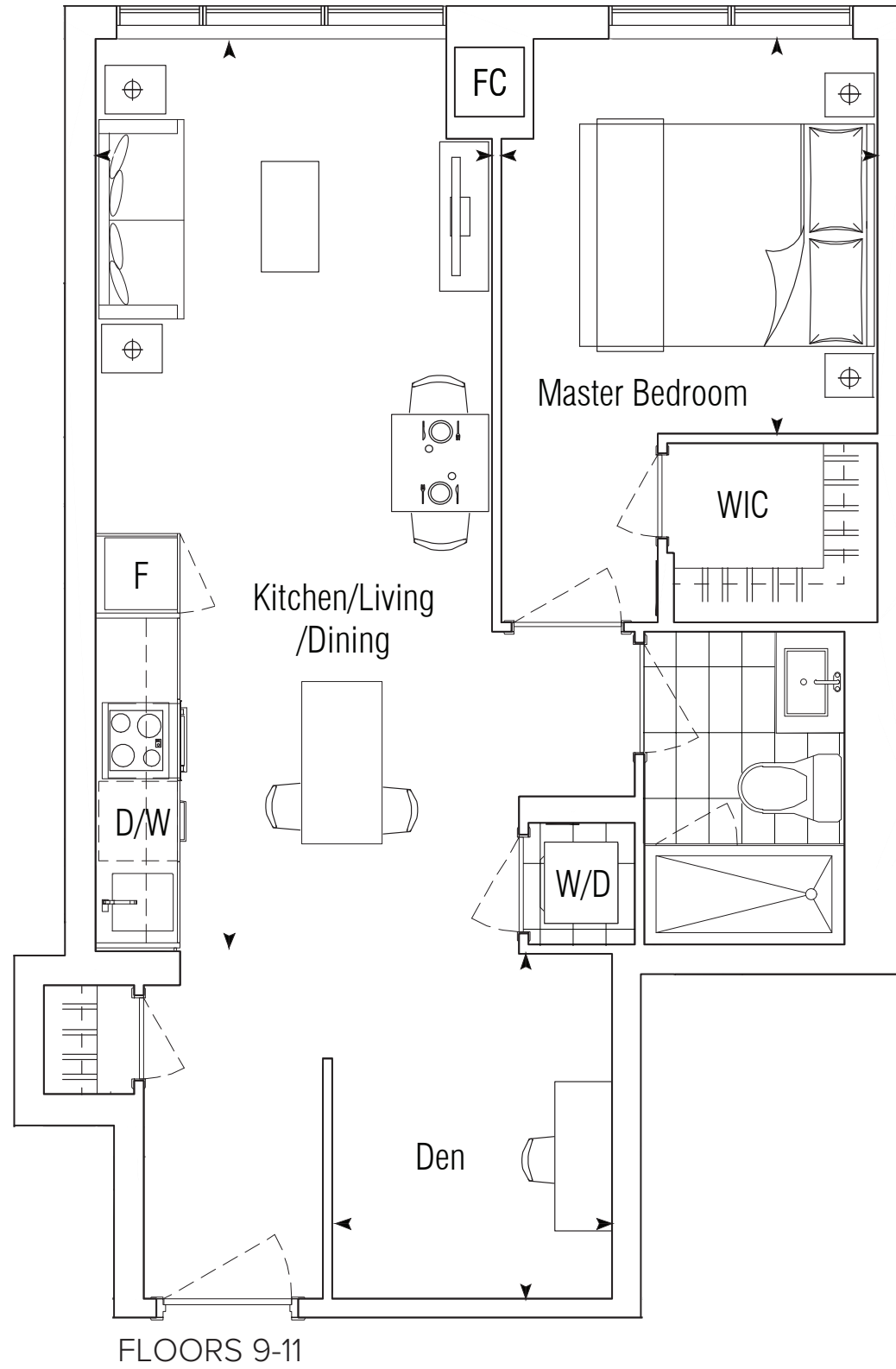
FLOOR 8

ALL DIMENSIONS AND SPECIFICATIONS ARE APPROXIMATE. CERTAIN PLANS ARE REVERSE OR MIRROR IMAGE. BALCONY SQUARE FOOTAGES ARE ESTIMATED AND MAY VARY FROM THAT STATED. PLEASE SEE SALES REPRESENTATIVE FOR DETAILS. FURNITURE NOT INCLUDED. REFER TO KEY PLAN FOR UNIT LOCATION AND ORIENTATION. PREPARED MAR 8, 2021

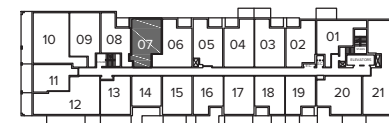
1E+D

1 BEDROOM + DEN
 INTERIOR: 589 SQ.FT.
TOTAL: 589 SQ.FT.

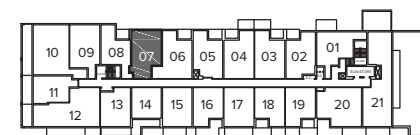
KITCHEN/LIVING/DINING 9'-9" x 22'-3"
 MASTER BEDROOM 9'-3" x 9'-9"
 DEN 6'-9" x 8'-6"



FLOOR 11



FLOOR 10



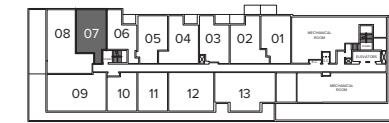
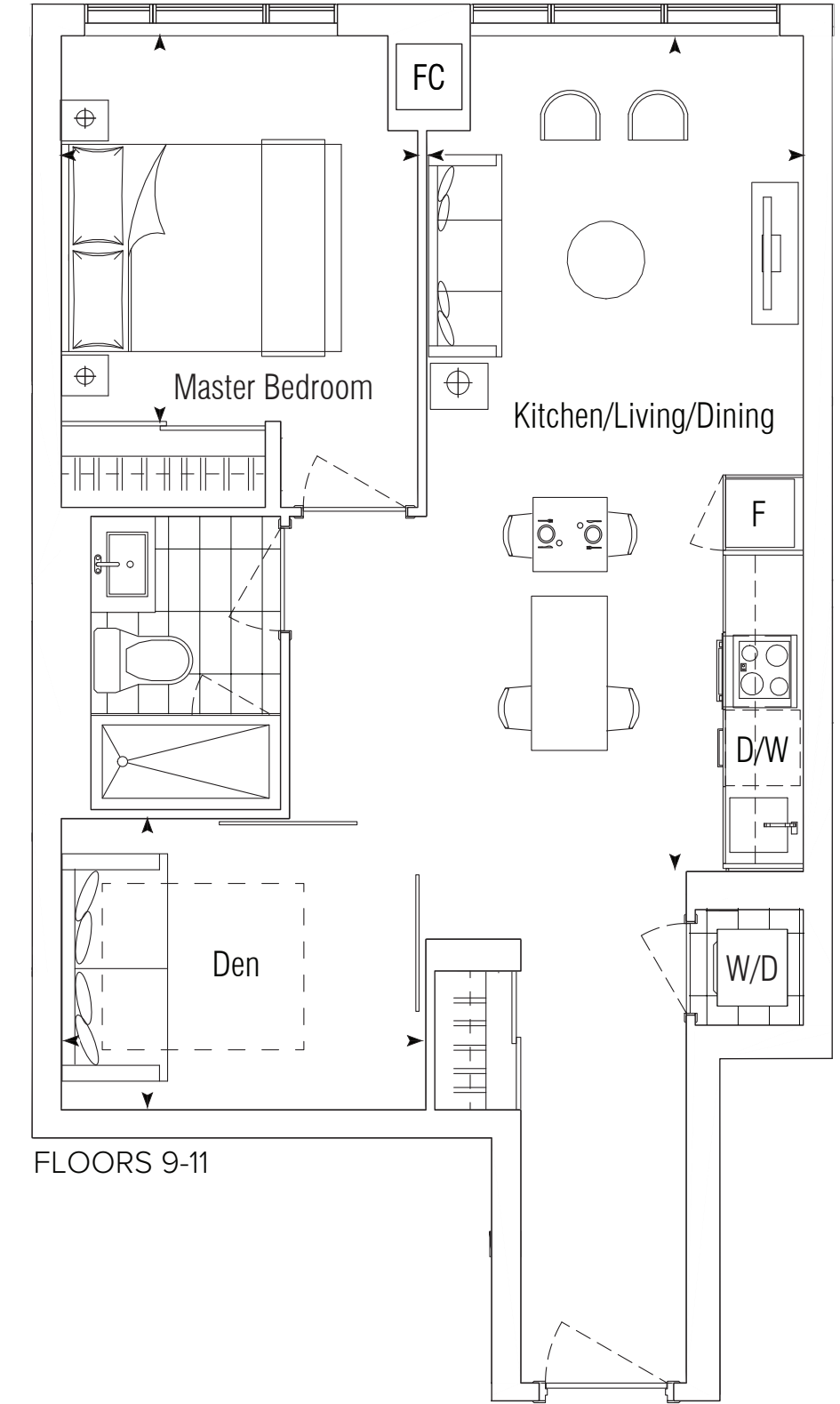
FLOOR 9



1H+D

1 BEDROOM+DEN
 INTERIOR: 617 SQ.FT.
TOTAL: 617 SQ.FT.

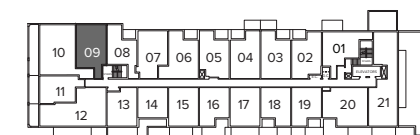
KITCHEN/LIVING/DINING 9' -9" x 21'-6"
 MASTER BEDROOM 9'-3" x 10'-0"
 DEN 9'-3" x 7'-6"



FLOOR 11



FLOOR 10



FLOOR 9

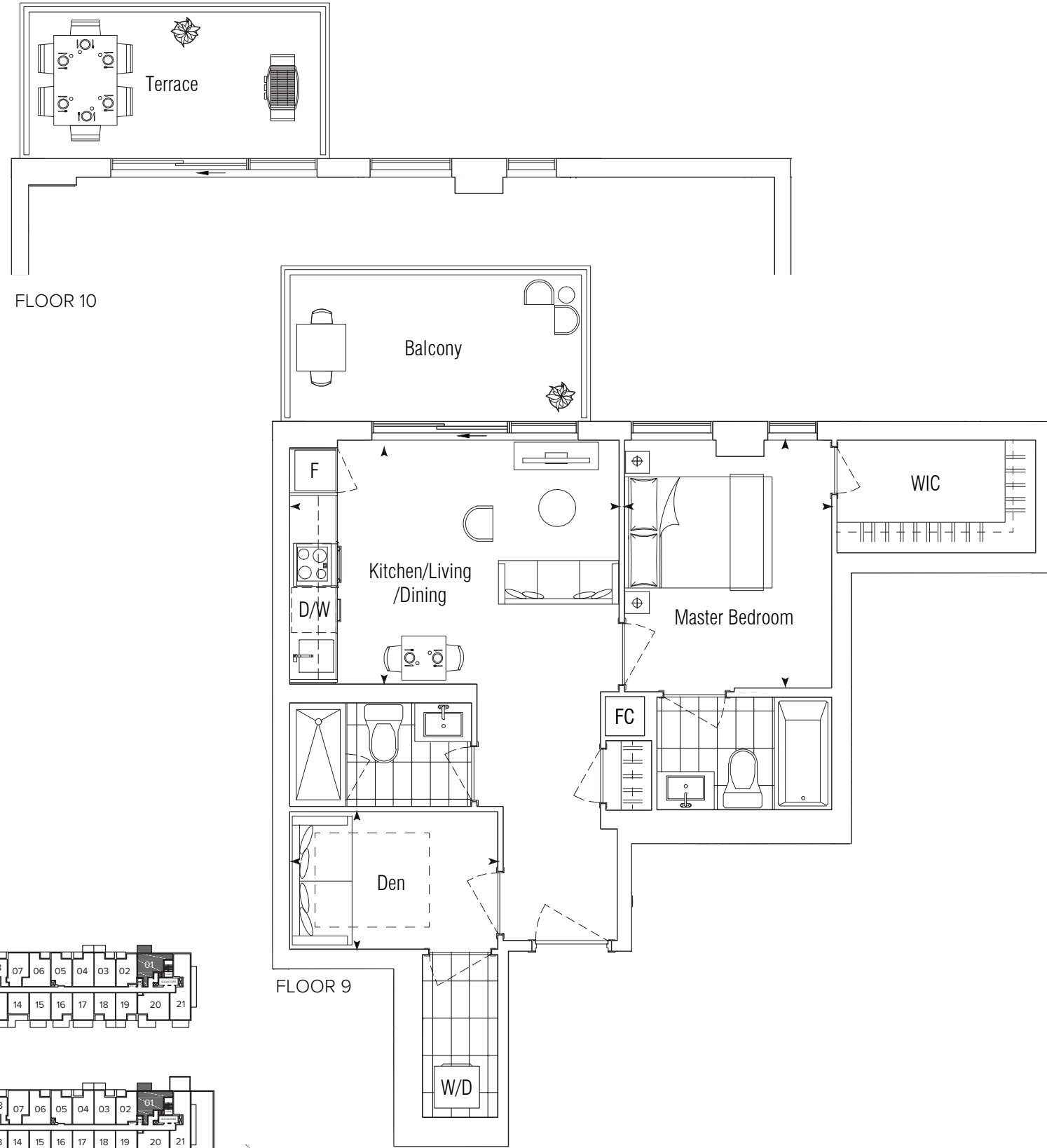


ALL DIMENSIONS AND SPECIFICATIONS ARE APPROXIMATE. CERTAIN PLANS ARE REVERSE OR MIRROR IMAGE. BALCONY SQUARE FOOTAGES ARE ESTIMATED AND MAY VARY FROM THAT STATED. PLEASE SEE SALES REPRESENTATIVE FOR DETAILS. FURNITURE NOT INCLUDED. REFER TO KEY PLAN FOR UNIT LOCATION AND ORIENTATION. PREPARED MAR 8, 2021

1J+D

1 BEDROOM + DEN
 INTERIOR: 631 SQ.FT.
 EXTERIOR: 92 SQ.FT.
TOTAL: 723 SQ.FT.

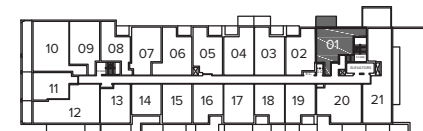
KITCHEN/LIVING/DINING 14'-3" x 10'-3"
 MASTER BEDROOM 9'-0" x 10'-9"
 DEN 9'-0" x 6'-0"



FLOOR 10



FLOOR 10



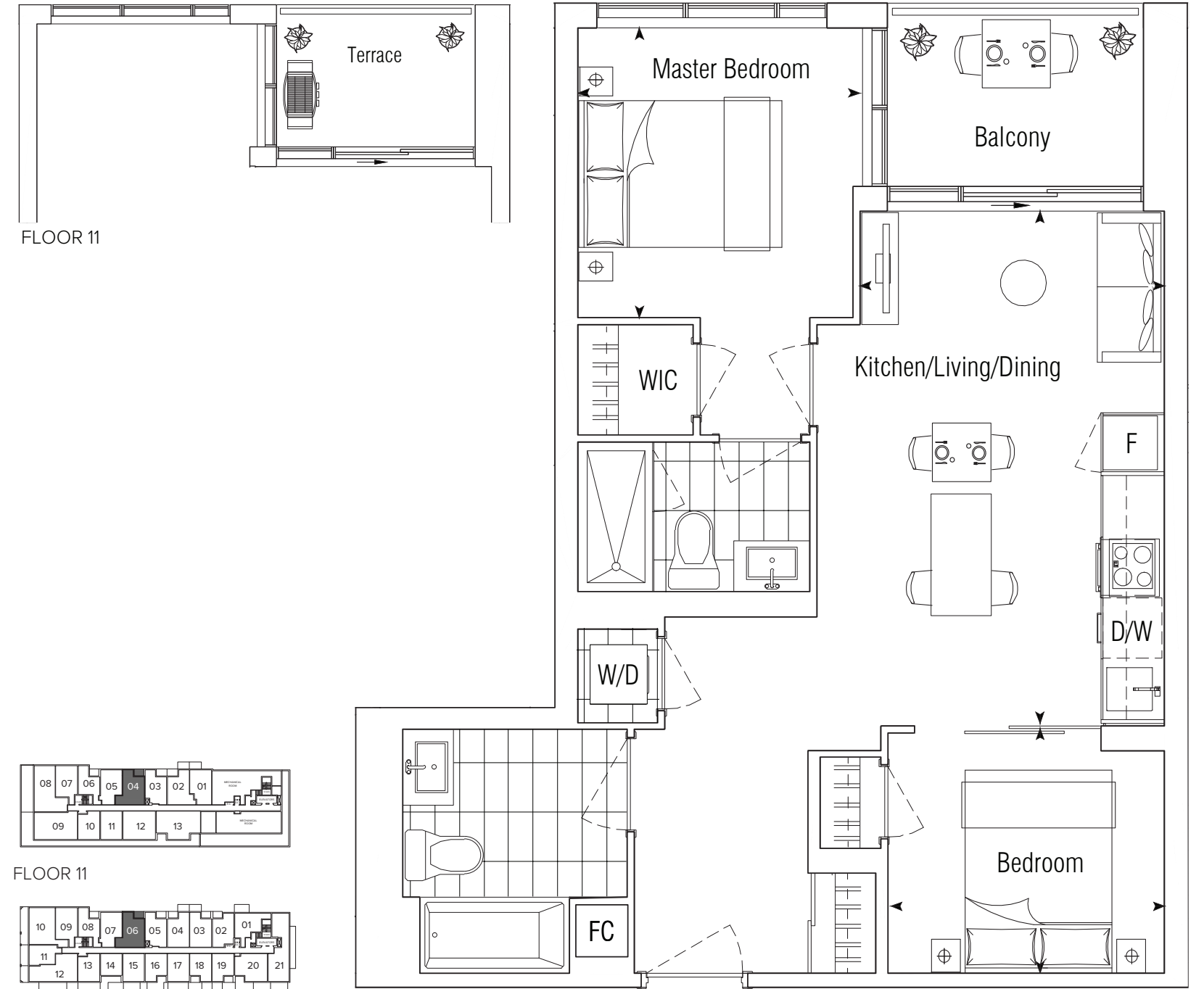
FLOOR 9



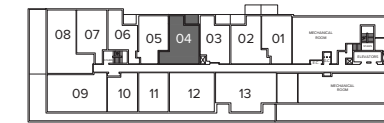
2B

2 BEDROOM
 INTERIOR: 648 SQ.FT.
 EXTERIOR: 51 SQ.FT.
TOTAL: 699 SQ.FT.

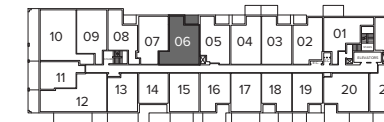
KITCHEN/LIVING/DINING 10'-0" x 16'-9"
 MASTER BEDROOM 9'-3" x 9'-6"
 BEDROOM 9'-0" x 8'-0"



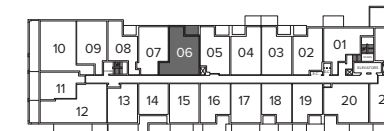
FLOOR 11



FLOOR 11



FLOOR 10



FLOOR 9



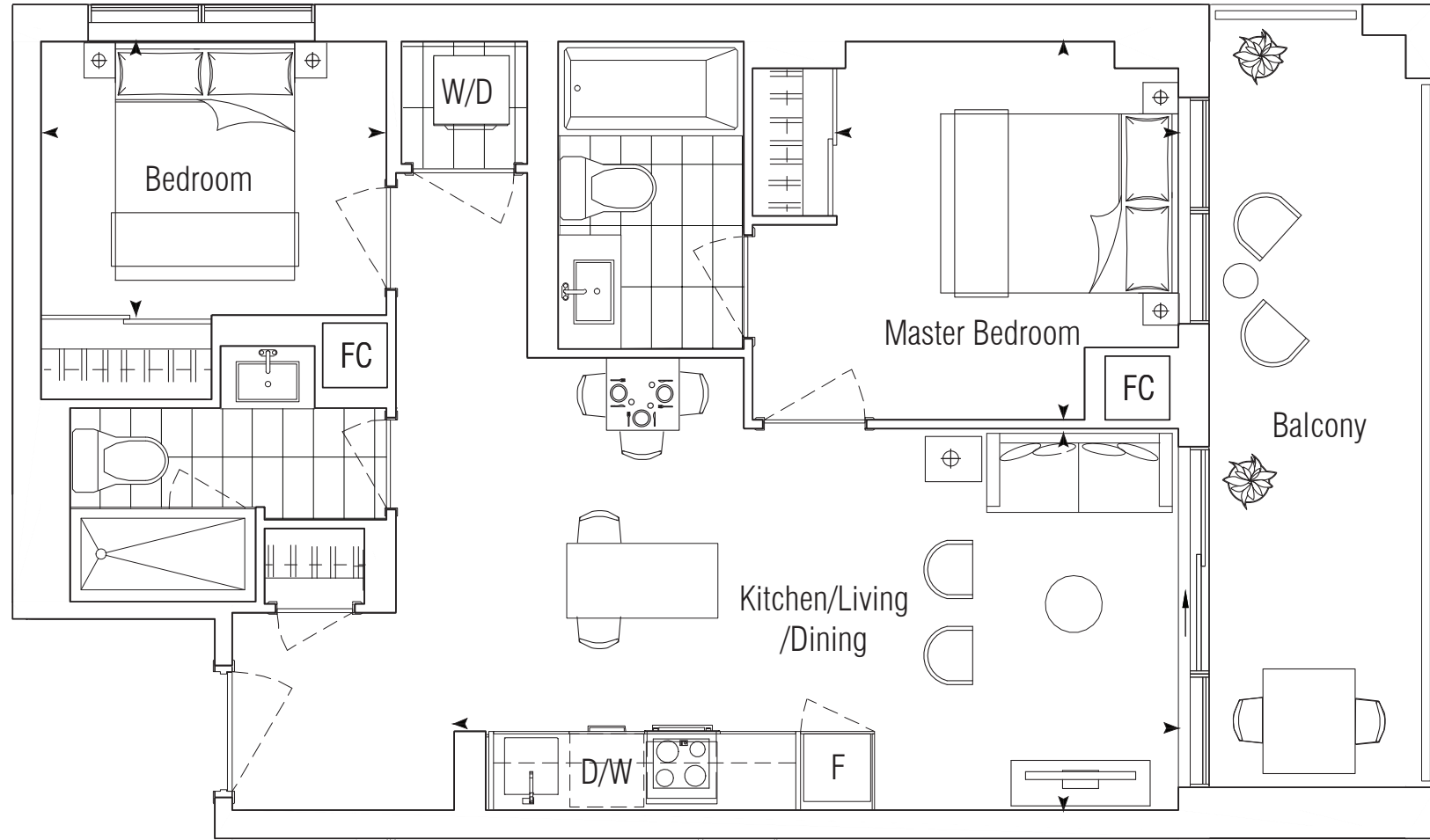
FLOORS 9-10

ALL DIMENSIONS AND SPECIFICATIONS ARE APPROXIMATE. CERTAIN PLANS ARE REVERSE OR MIRROR IMAGE. BALCONY SQUARE FOOTAGES ARE ESTIMATED AND MAY VARY FROM THAT STATED. PLEASE SEE SALES REPRESENTATIVE FOR DETAILS. FURNITURE NOT INCLUDED. REFER TO KEY PLAN FOR UNIT LOCATION AND ORIENTATION. PREPARED MAR 8, 2021

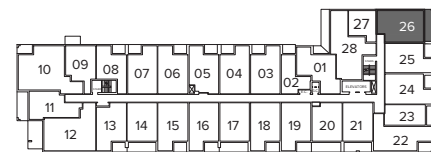
2D

2 BEDROOM
 INTERIOR: 652 SQ.FT.
 EXTERIOR: 125 SQ.FT.
TOTAL: 777 SQ.FT.

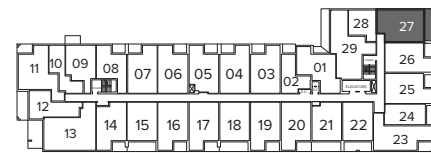
KITCHEN/LIVING/DINING 19'-0" x 10'-0"
 MASTER BEDROOM 9'-0" x 10'-0"
 BEDROOM 9'-0" x 7'-3"



FLOORS 2-7



FLOORS 6-7

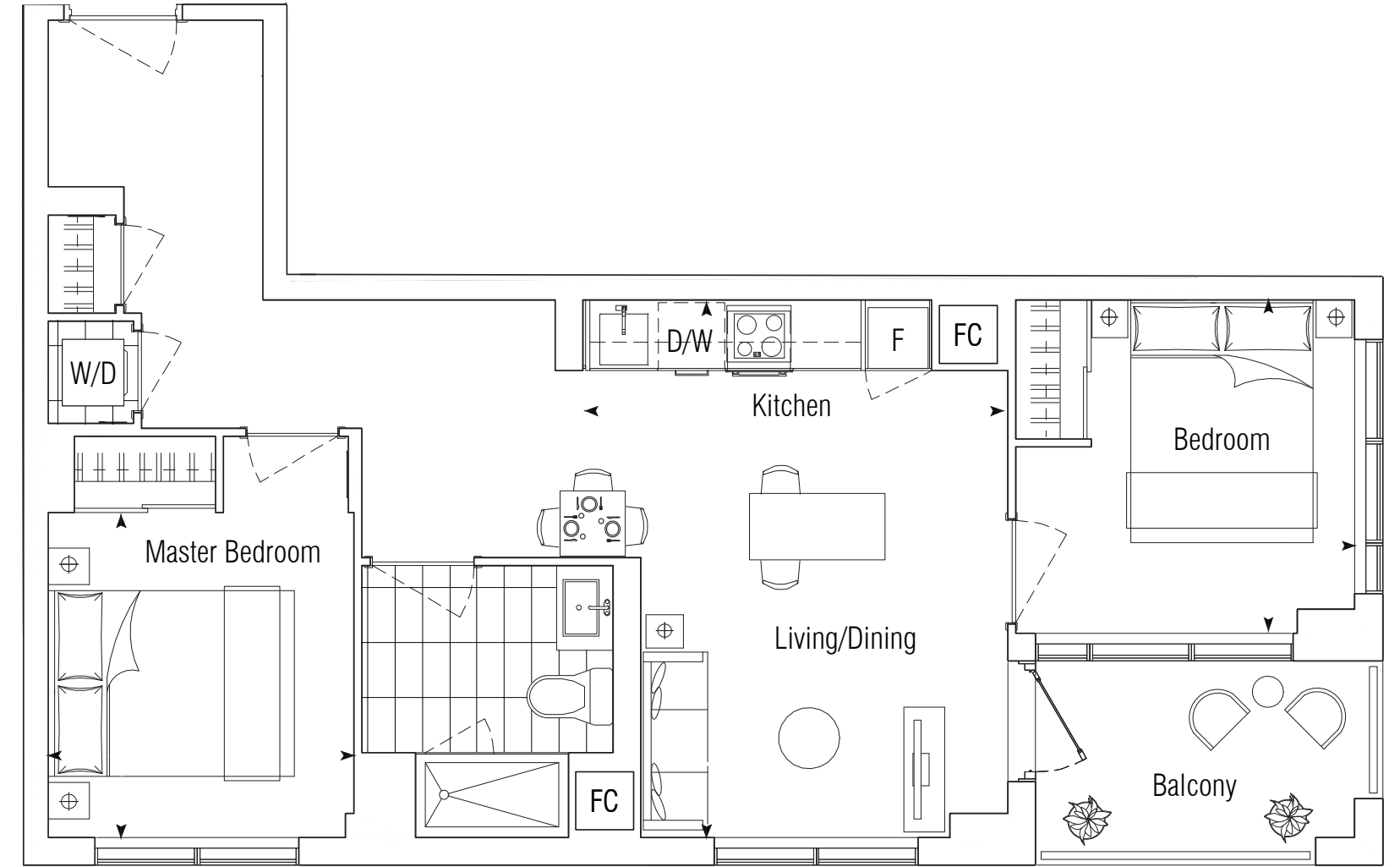


FLOORS 2-5

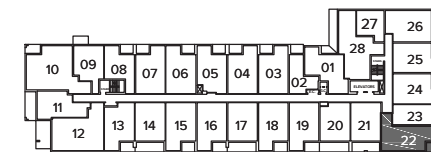
2E

2 BEDROOM
 INTERIOR: 682 SQ.FT.
 EXTERIOR: 62 SQ.FT.
TOTAL: 744 SQ.FT.

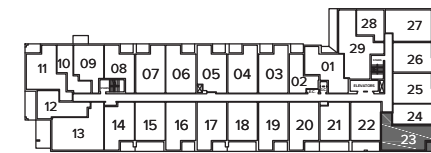
KITCHEN/LIVING/DINING 13'-4" x 15'-9"
 MASTER BEDROOM 9'-0" x 9'-6"
 BEDROOM 10'-0" x 9'-9"



FLOORS 2-7



FLOORS 6-7



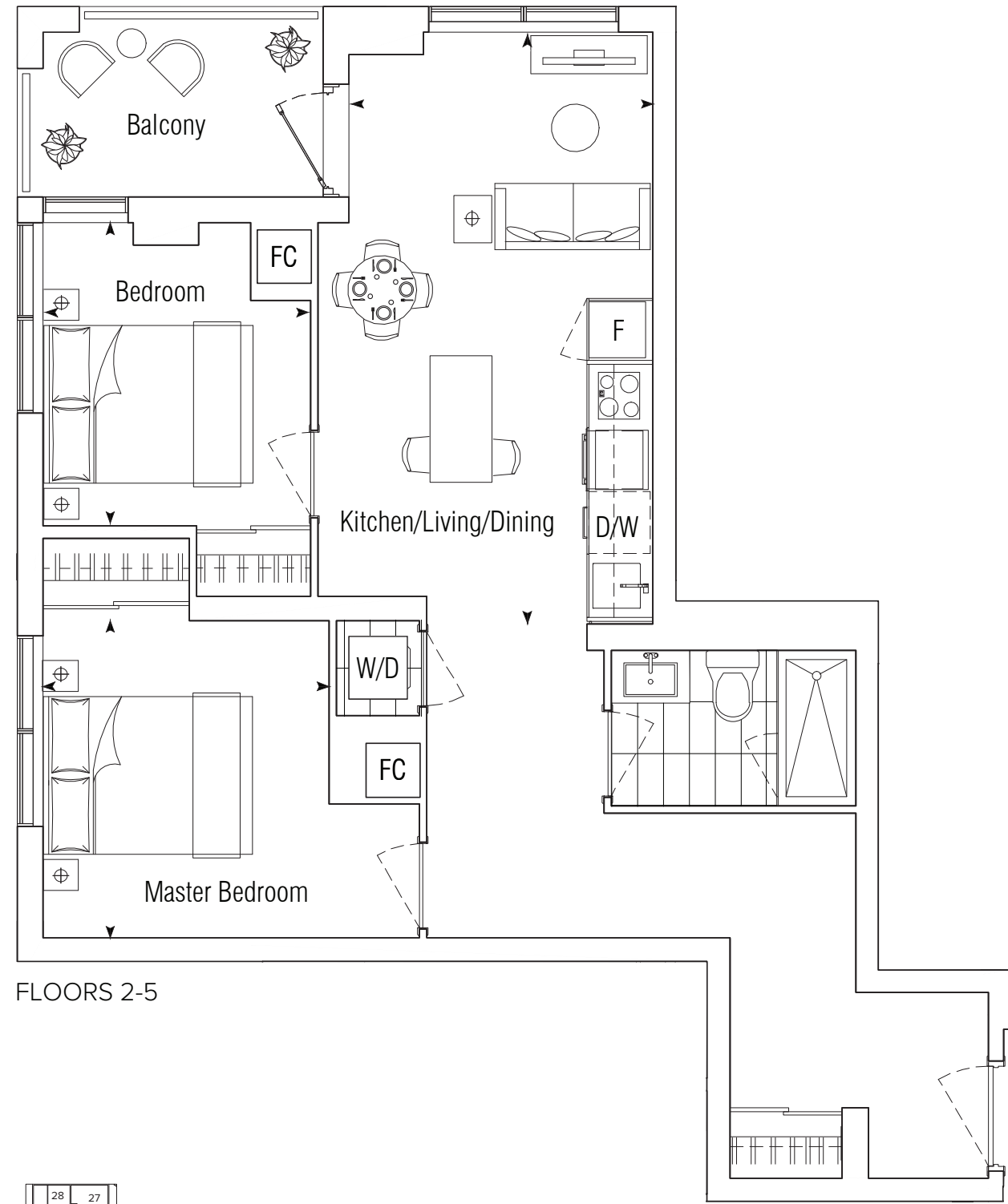
FLOORS 2-5

ALL DIMENSIONS AND SPECIFICATIONS ARE APPROXIMATE. CERTAIN PLANS ARE REVERSE OR MIRROR IMAGE. BALCONY SQUARE FOOTAGES ARE ESTIMATED AND MAY VARY FROM THAT STATED. PLEASE SEE SALES REPRESENTATIVE FOR DETAILS. FURNITURE NOT INCLUDED. REFER TO KEY PLAN FOR UNIT LOCATION AND ORIENTATION. PREPARED MAR 8, 2021

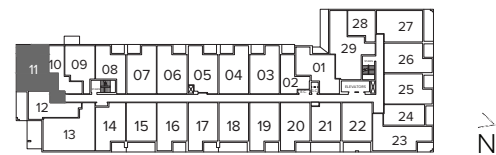
2F

2 BEDROOM
 INTERIOR: 690 SQ.FT.
 EXTERIOR: 58 SQ.FT.
TOTAL: 748 SQ.FT.

KITCHEN/LIVING/DINING 9'-6" x 18'-6"
 MASTER BEDROOM 9'-0" x 10'-0"
 BEDROOM 8'-3" x 9'-6"



FLOORS 2-5

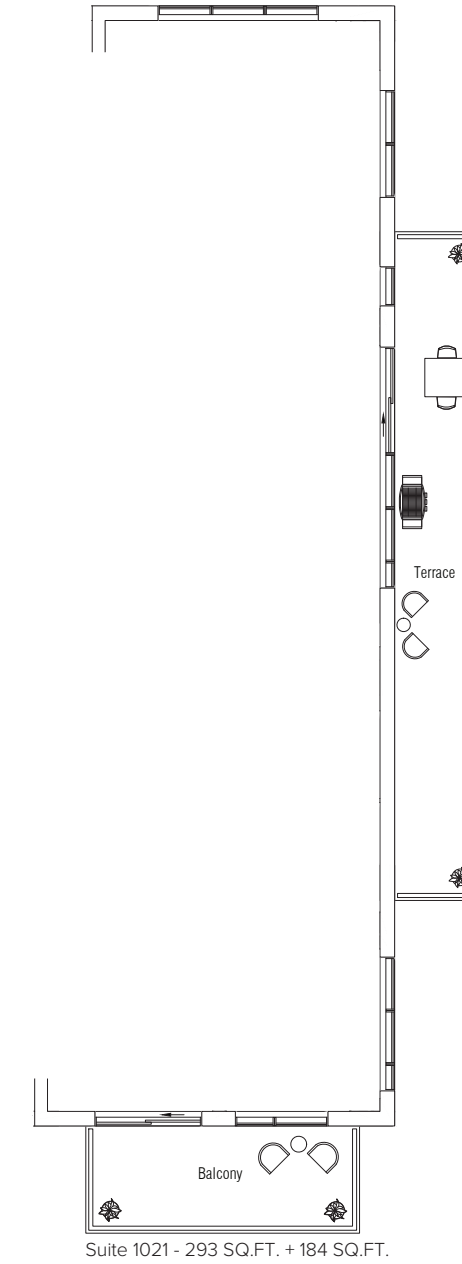


FLOORS 2-5

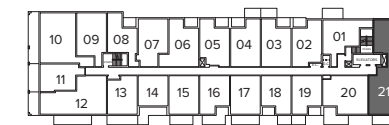
2I

2 BEDROOM
 INTERIOR: 1061 SQ.FT.
 EXTERIOR: 93 SQ.FT. + 177 SQ.FT. + 253 SQ.FT.
TOTAL: 1584 SQ.FT.

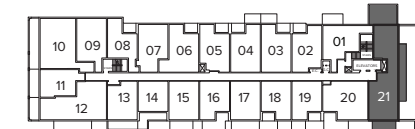
KITCHEN/LIVING/DINING 15'-3" x 20'-3"
 MASTER BEDROOM 9'-3" x 10'-0"
 BEDROOM 8'-6" x 9'-0"
 STUDY NOOK 6'-6" x 9'-0"



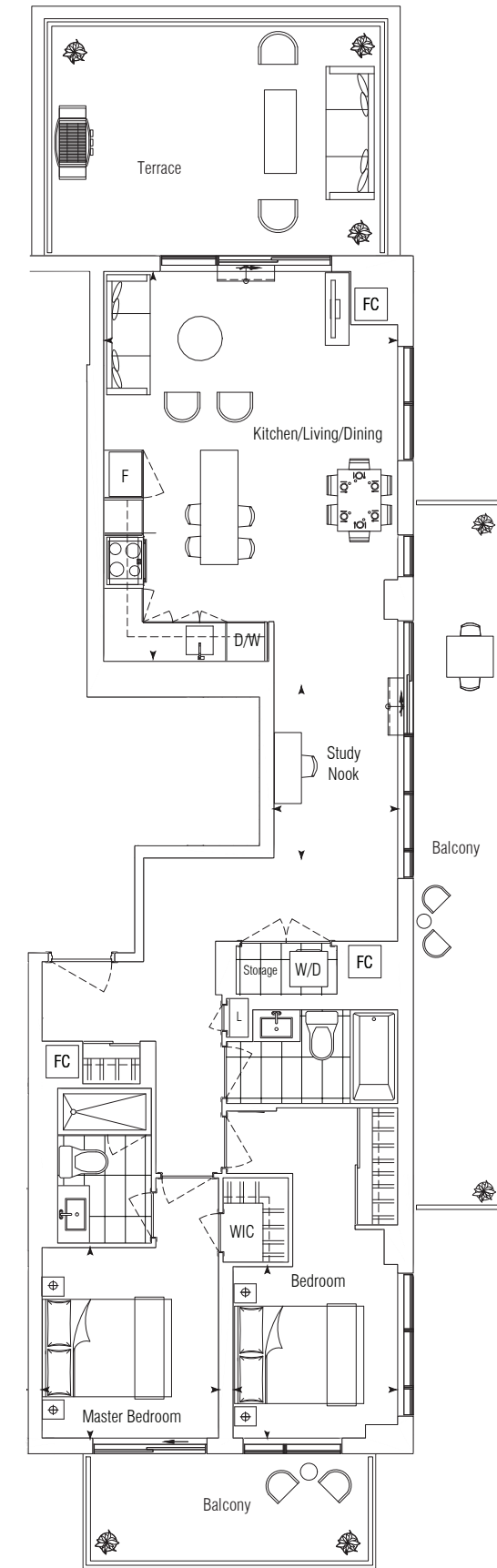
Suite 1021 - 293 SQ.FT. + 184 SQ.FT.



FLOOR 10



FLOOR 9



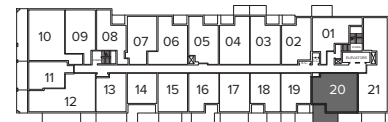
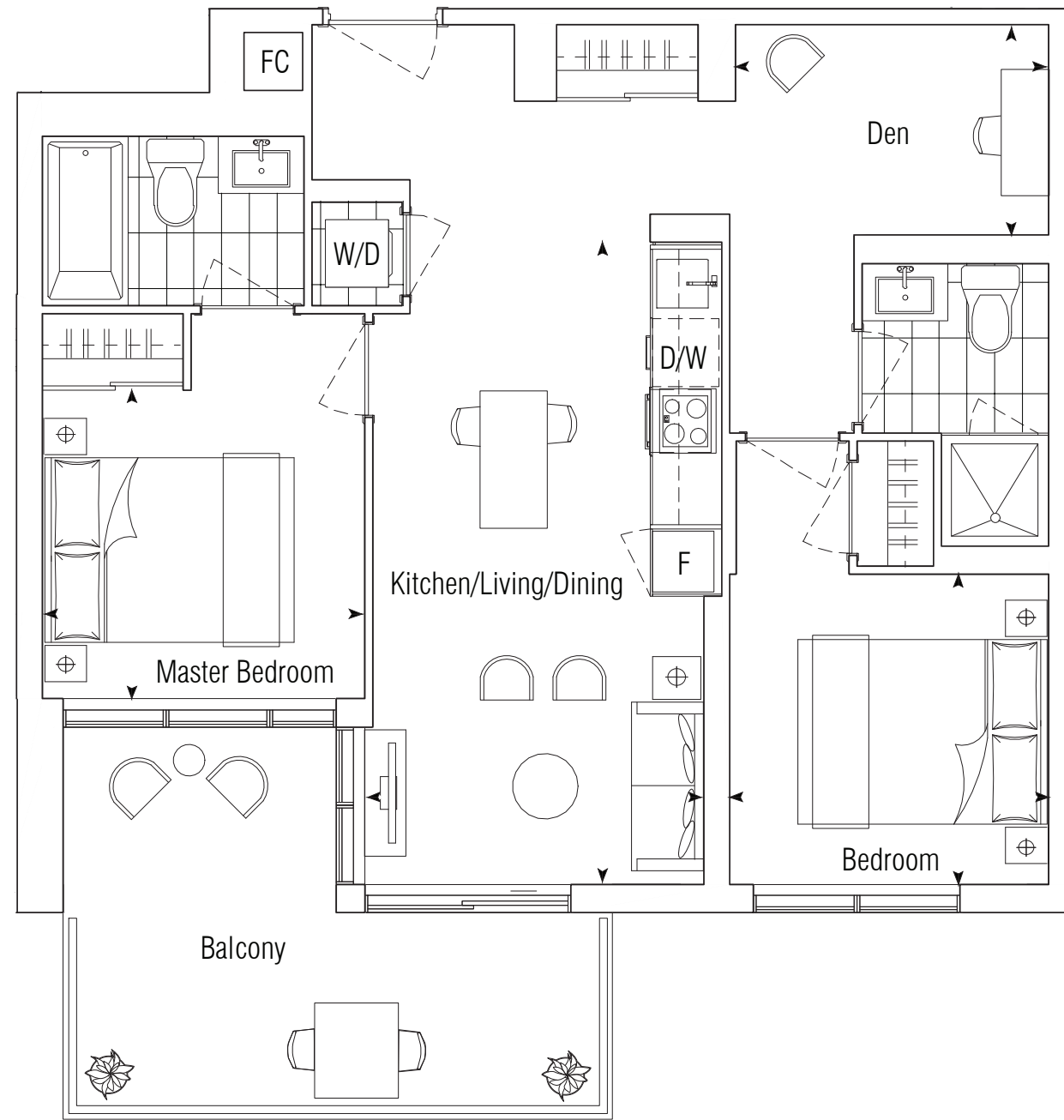
FLOOR 9

ALL DIMENSIONS AND SPECIFICATIONS ARE APPROXIMATE. CERTAIN PLANS ARE REVERSE OR MIRROR IMAGE. BALCONY SQUARE FOOTAGES ARE ESTIMATED AND MAY VARY FROM THAT STATED. PLEASE SEE SALES REPRESENTATIVE FOR DETAILS. FURNITURE NOT INCLUDED. REFER TO KEY PLAN FOR UNIT LOCATION AND ORIENTATION. PREPARED MAR 8, 2021

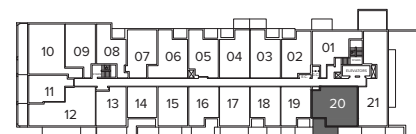
2A+D

2 BEDROOM+DEN
 INTERIOR: 728 SQ.FT.
 EXTERIOR: 139 SQ.FT.
TOTAL: 867 SQ.FT.

KITCHEN/LIVING/DINING 9'-9" x 18'-6"
 MASTER BEDROOM 9'-3" x 9'-0"
 BEDROOM 9'-3" x 9'-0"
 DEN 9'-0" x 6'-0"



FLOOR 10



FLOOR 9

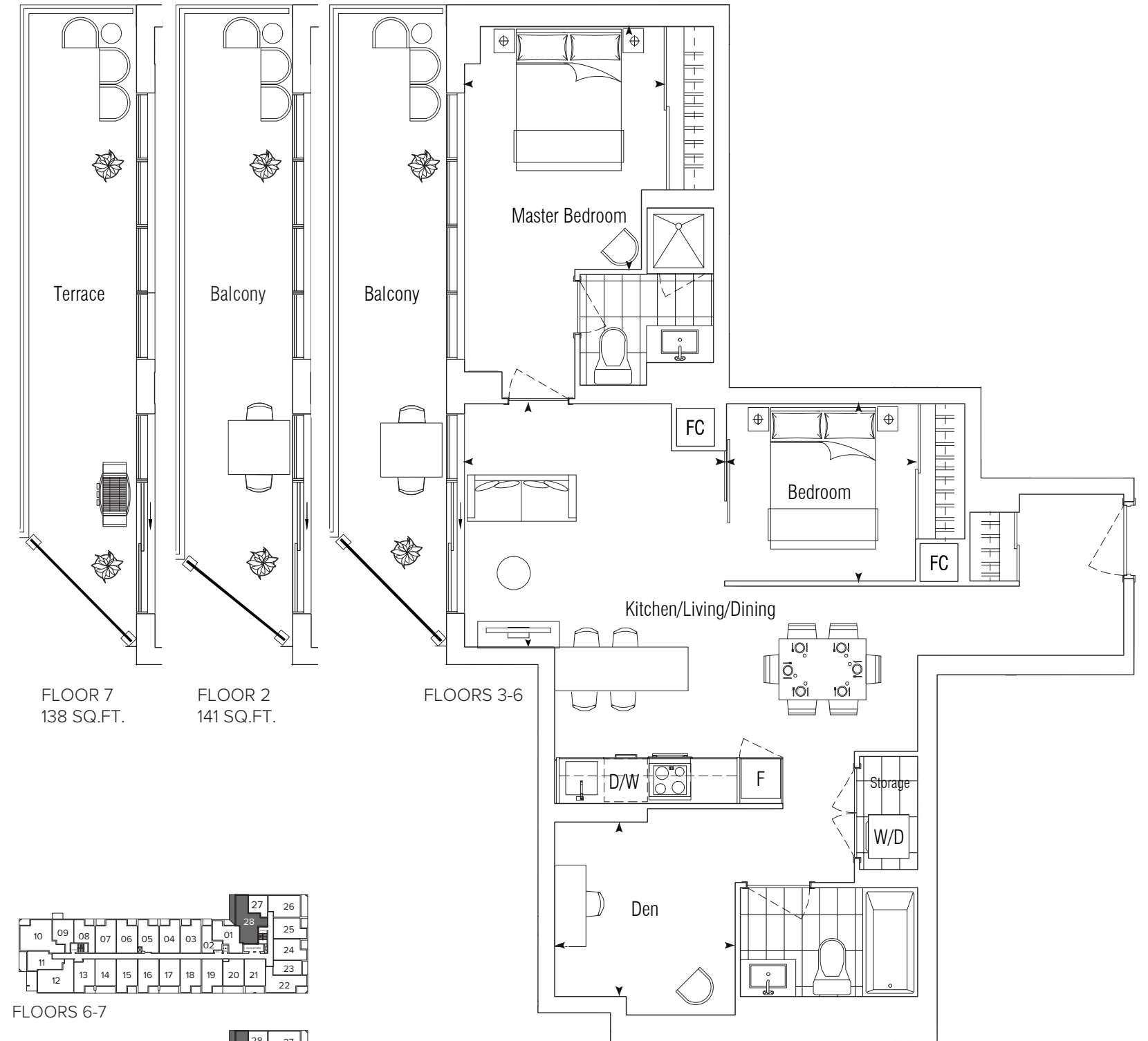
FLOORS 9-10



2D+D

2 BEDROOM + DEN
 INTERIOR: 862 SQ.FT.
 EXTERIOR: 138 SQ.FT.
TOTAL: 1000 SQ.FT.

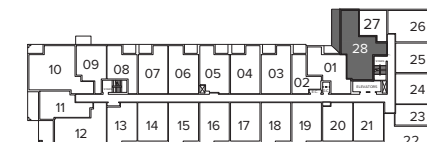
LIVING/DINING 11'-9" x 11'-0"
 MASTER BEDROOM 9'-0" x 11'-0"
 BEDROOM 8'-6" x 8'-0"
 DEN 8'-0" x 7'-9"



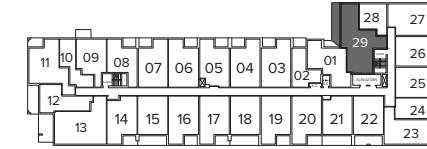
FLOOR 7
 138 SQ.FT.

FLOOR 2
 141 SQ.FT.

FLOORS 3-6



FLOORS 6-7



FLOORS 2-5



ALL DIMENSIONS AND SPECIFICATIONS ARE APPROXIMATE. CERTAIN PLANS ARE REVERSE OR MIRROR IMAGE. BALCONY SQUARE FOOTAGES ARE ESTIMATED AND MAY VARY FROM THAT STATED. PLEASE SEE SALES REPRESENTATIVE FOR DETAILS. FURNITURE NOT INCLUDED. REFER TO KEY PLAN FOR UNIT LOCATION AND ORIENTATION. PREPARED MAR 8, 2021

Penthouse *Collection*

Looking out on
the surrounding leafy
neighbourhood,
the penthouse suites
at Bayview at The Village
present an elevated approach
to interior design and space
planning, with outdoor flooring,
roller shades, and superb views
of the neighbourhood.



LUXURIOUS BATHROOM

Whether there's two of you getting ready for work in the morning, or it's your me-time after hours, this indulgent bathroom and its double vanity and deep soaker tub makes life feel more luxurious and comfortable.

Illustrations are artist concept only. E&O.E.

1G+D

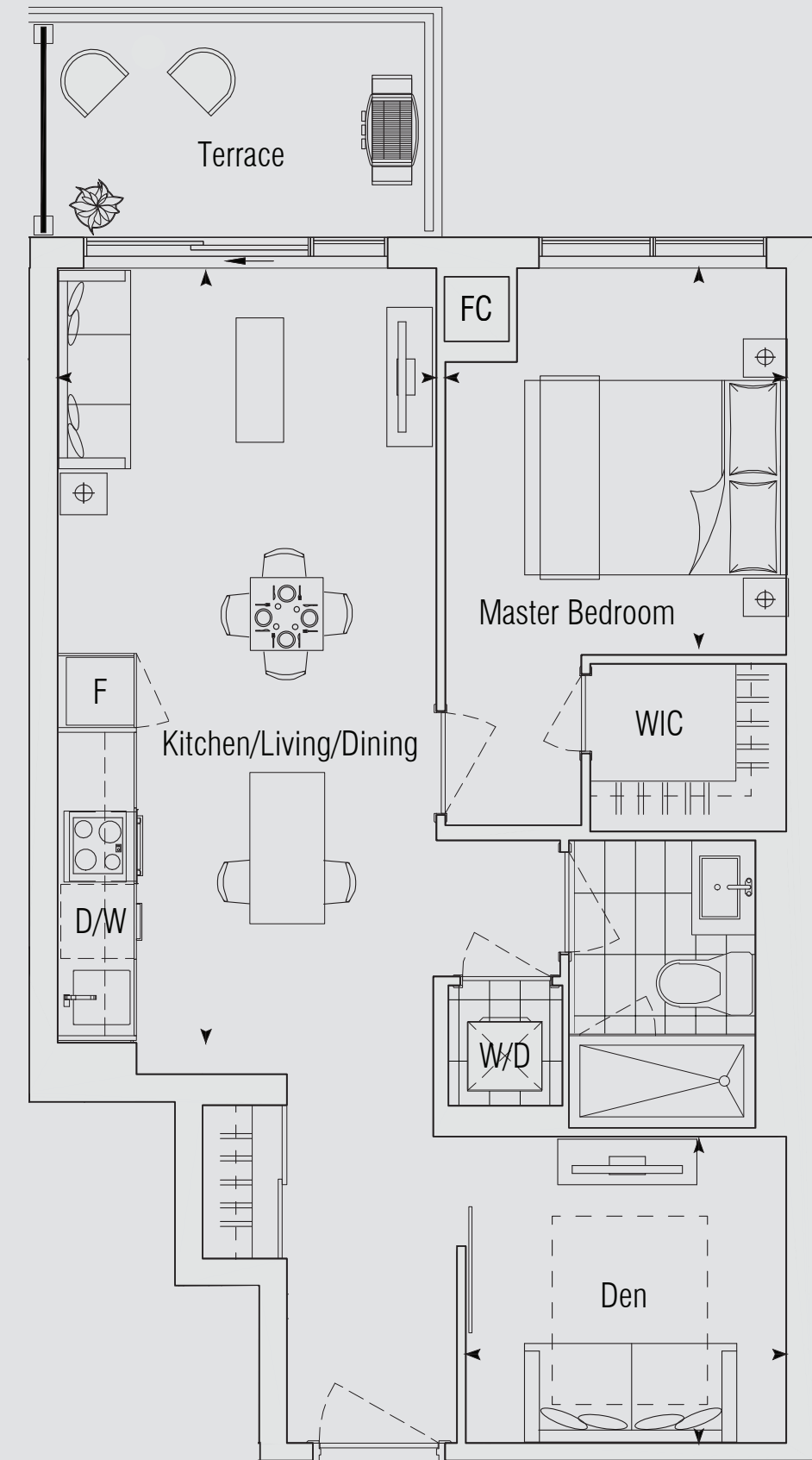
PENTHOUSE

1 BEDROOM+DEN
 INTERIOR: 598 SQ.FT.
 EXTERIOR: 64 SQ.FT.
TOTAL: 662 SQ.FT.

KITCHEN/LIVING/DINING 10'-0" x 20'-3"
 MASTER BEDROOM 9'-0" x 10'-0"
 DEN 8'-6" x 8'-0"



FLOOR 11



FLOOR 11

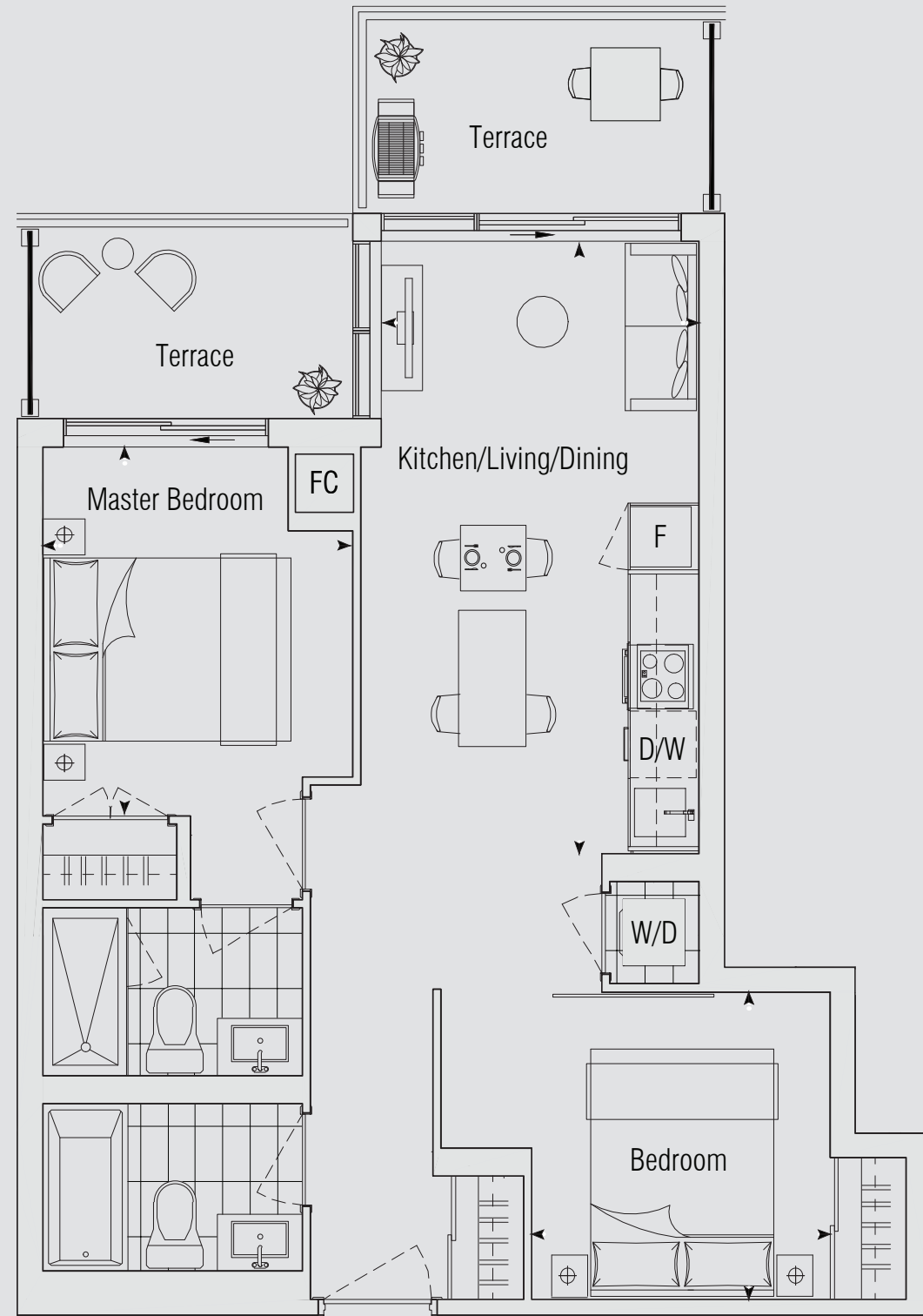
ALL DIMENSIONS AND SPECIFICATIONS ARE APPROXIMATE. CERTAIN PLANS ARE REVERSE OR MIRROR IMAGE. BALCONY SQUARE FOOTAGES ARE ESTIMATED AND MAY VARY FROM THAT STATED. PLEASE SEE SALES REPRESENTATIVE FOR DETAILS. FURNITURE NOT INCLUDED. REFER TO KEY PLAN FOR UNIT LOCATION AND ORIENTATION. PREPARED MAR 8, 2021

2A

PENTHOUSE

2 BEDROOM
 INTERIOR: 639 SQ.FT.
 EXTERIOR: 57 SQ.FT.+ 64 SQ.FT.
TOTAL: 760 SQ.FT.

KITCHEN/LIVING/DINING 9'-3" x 17'-9"
 MASTER BEDROOM 9'-0" x 10'-9"
 BEDROOM 8'-9" x 9'-0"



FLOOR 11



FLOOR 11

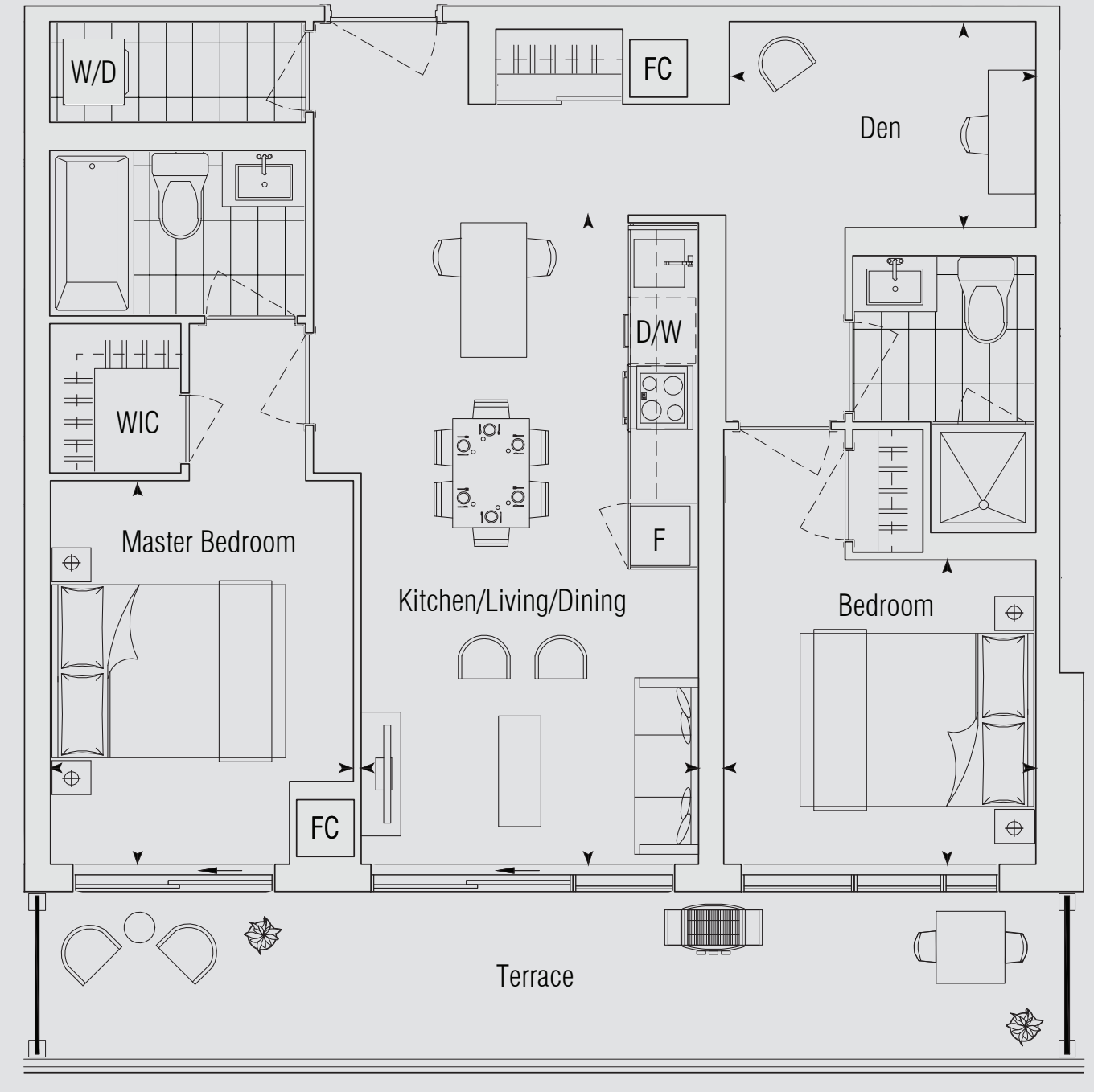


2C+D

PENTHOUSE

2 BEDROOM + DEN
 INTERIOR: 795 SQ.FT.
 EXTERIOR: 184 SQ.FT.
TOTAL: 979 SQ.FT.

KITCHEN/LIVING/DINING 10'-0" x 19'-0"
 MASTER BEDROOM 9'-0" x 11'-3"
 BEDROOM 9'-3" x 9'-0"
 DEN 9'-0" x 6'-0"



FLOOR 11



FLOOR 11



ALL DIMENSIONS AND SPECIFICATIONS ARE APPROXIMATE. CERTAIN PLANS ARE REVERSE OR MIRROR IMAGE. BALCONY SQUARE FOOTAGES ARE ESTIMATED AND MAY VARY FROM THAT STATED. PLEASE SEE SALES REPRESENTATIVE FOR DETAILS. FURNITURE NOT INCLUDED. REFER TO KEY PLAN FOR UNIT LOCATION AND ORIENTATION. PREPARED MAR 8, 2021