

DANIELS & BAIF

BOULEVARD

— AT THE THORNHILL —

A Master-Planned Community on Bathurst

CONDOMINIUM SUITES PRICE LIST

(Subject to Availability)

Floor premiums are approx. \$1,000 per floor. Additional premiums may apply.
Please see a Sales Representative to see how premiums apply to the model you are interested in.

STUDIO WITH ONE BATHROOM					
MODEL	BUILDING	APPROXIMATE SUITE SIZE (SQ.FT.)	AVAILABLE FLOORS	EXPOSURE	PRICES FROM
THE PRATT	SOUTH (D)	523	2, 4, 5	E	\$508,900
THE SPRING FIELD	NORTH (C)	523	6 ONLY	N	\$509,900
THE RIVERBED	NORTH (C)	530	3 ONLY	N	\$514,900
ONE BEDROOM WITH ONE BATHROOM					
MODEL	BUILDING	APPROXIMATE SUITE SIZE (SQ.FT.)	AVAILABLE FLOORS	EXPOSURE	PRICES FROM
THE SERENA	SOUTH (D)	565	1 & 2	E	\$545,900 ¹
THE POND	NORTH (C)	581	2 ONLY	N	\$558,900
ONE BEDROOM PLUS DEN WITH ONE BATHROOM					
MODEL	BUILDING	APPROXIMATE SUITE SIZE (SQ.FT.)	AVAILABLE FLOORS	EXPOSURE	PRICES FROM
THE SHIELDS	SOUTH (D)	630	2 ONLY	E	\$608,900
THE ELLIOT	SOUTH (D)	640	1 ONLY	E	\$621,900 ¹
THE DALLAS	SOUTH (D)	644	1 *, 3 *	E	\$626,900 ¹
THE LAKE	NORTH (C)	660	2, 3 *, 6 *	NE	\$627,900

DANIELS & BAIF
BOULEVARD
 — AT THE THORNHILL —

A Master-Planned Community on Bathurst

ONE BEDROOM PLUS DEN WITH ONE BATHROOM *CONTINUED*

MODEL	BUILDING	APPROXIMATE SUITE SIZE (SQ.FT.)	AVAILABLE FLOORS	EXPOSURE	PRICES FROM
THE VALLEY PEAK	NORTH (C)	657	2 ONLY	N	\$629,900
THE WOODLOT	NORTH (C)	663	3*AND 4*	S	\$635,900

TWO BEDROOMS WITH ONE BATHROOM

MODEL	BUILDING	APPROXIMATE SUITE SIZE (SQ.FT.)	AVAILABLE FLOORS	EXPOSURE	PRICES FROM
THE TRAILHEAD	NORTH (C)	733	2 and 4	N	\$673,900

TWO BEDROOMS WITH ONE BATHROOM AND POWDER ROOM

MODEL	BUILDING	APPROXIMATE SUITE SIZE (SQ.FT.)	AVAILABLE FLOORS	EXPOSURE	PRICES FROM
THE HILL VIEW	NORTH (C)	668	3*ONLY	S	\$634,900

TWO BEDROOMS WITH TWO BATHROOMS

MODEL	BUILDING	APPROXIMATE SUITE SIZE (SQ.FT.)	AVAILABLE FLOORS	EXPOSURE	PRICES FROM
THE MEADOW VIEW	NORTH (C)	694	2 ONLY	S	\$659,900
THE COAST	NORTH (C)	760	2, 5*, 8*	S	\$692,900
THE DIONNE	SOUTH (D)	828	2 ONLY*	SW	\$769,900
THE ARTHUR	SOUTH (D)	864	2 & 5	S	\$799,900
THE GILDED BLOOM	NORTH (C)	896	2 - 4	W	\$825,900 ¹
THE MILNE	SOUTH (D)	917	2 - 6	NE	\$831,900
THE SHIRE MEADOW	NORTH (C)	967	2 - 4	W	\$889,900*
THE RIVER WOOD	NORTH (C)	984	12 ONLY	SW	\$912,900
THE TRAIL	NORTH (C)	1,070	8 ONLY	SW	\$963,900

DANIELS & BAIF
BOULEVARD
 — AT THE THORNHILL —

A Master-Planned Community on Bathurst

TWO BEDROOMS PLUS DEN WITH TWO BATHROOMS

MODEL	BUILDING	APPROXIMATE SUITE SIZE (SQ.FT.)	AVAILABLE FLOORS	EXPOSURE	PRICES FROM
THE LILY FIELD	NORTH (C)	870	2 ONLY	S	\$798,900
THE ROTHSTEIN	SOUTH (D)	945	2, 3, 5	W	\$879,900
THE MARTIN	SOUTH (D)	963	3 - 5	W	\$896,900
THE THOMSON	SOUTH (D)	979	2 - 4	W	\$910,900
THE PAIGE	SOUTH (D)	978	3 - 5	W	\$911,900

TWO BEDROOMS PLUS DEN WITH TWO BATHROOMS AND POWDER ROOM

MODEL	BUILDING	APPROXIMATE SUITE SIZE (SQ.FT.)	AVAILABLE FLOORS	EXPOSURE	PRICES FROM
THE TRAIL GREENS	NORTH (C)	1,148	6 ONLY	SW	\$1,033,900

THREE BEDROOMS WITH TWO BATHROOMS

MODEL	BUILDING	APPROXIMATE SUITE SIZE (SQ.FT.)	AVAILABLE FLOORS	EXPOSURE	PRICES FROM
THE KAUR	SOUTH (D)	1,092	2 - 4	NW	\$989,900
THE HORIZON	NORTH (C)	1,157	10 ONLY	NW	\$1,042,900

THREE BEDROOMS WITH THREE BATHROOMS

MODEL	BUILDING	APPROXIMATE SUITE SIZE (SQ.FT.)	AVAILABLE FLOORS	EXPOSURE	PRICES FROM
THE SUMMIT RIDGE	NORTH (C)	1,380	8 ONLY	NW	\$1,256,900

THREE BEDROOMS PLUS DEN WITH TWO BATHROOMS

MODEL	BUILDING	APPROXIMATE SUITE SIZE (SQ.FT.)	AVAILABLE FLOORS	EXPOSURE	PRICES FROM
THE TUNDRA	NORTH (C)	1,119	12 ONLY	NW	\$1,011,900

Additional premiums apply, price listed does not apply to lowest floor, please speak to a Sales Representative for details.

* Sold conditional – Please speak with a Daniels Sales Representative for more details

DANIELS & BAIF
BOULEVARD
 — AT THE THORNHILL —

A Master-Planned Community on Bathurst

SUITES WITH A TERRACE

MODEL	TYPE	BUILDING & UNIT NUMBER	APPROXIMATE SUITE SIZE (SQ.FT.)	APPROXIMATE TERRACE SIZE (SQ.FT.)	EXPOSURE	PRICE
THE WOOD WIND	1 BEDROOM PLUS DEN / 1 BATHROOM	NORTH C - 103	633	170	S	\$622,900
THE CANYON	2 BEDROOMS / 2 BATHROOMS	NORTH C - 105 *	696	170	S	\$663,900
THE LIVESAY	2 BEDROOMS / 2 BATHROOMS	SOUTH D - 111	823	319	S	\$770,900
THE DIONNE	2 BEDROOMS / 2 BATHROOMS	SOUTH D - 113	828	241	SW	\$778,900
THE DANNIE	2 BEDROOMS PLUS DEN / 2 BATHROOMS	SOUTH D - 117	945	243	W	\$889,900
THE MARTIN	2 BEDROOMS PLUS DEN / 2 BATHROOMS	SOUTH D - 118	963	243	W	\$904,900
THE THOMSON	2 BEDROOMS PLUS DEN / 2 BATHROOMS	SOUTH D - 116	979	251	W	\$919,900
THE CAMPBELL	2 BEDROOMS PLUS DEN / 2 BATHROOMS	SOUTH D - 120	1,108	98	E	\$991,900
THE TUNDRA	3 BEDROOMS PLUS DEN / 2 BATHROOMS	NORTH C - 1101	1,119	558	NW	\$1,029,900
THE VALLEY VISTA	3 BEDROOMS PLUS DEN / 2 BATHROOMS	NORTH C - 712	1,772	892	NW	\$1,564,900



ACCESSIBILITY DESIGNED

MODEL	BUILDING & UNIT NUMBER	APPROXIMATE SUITE SIZE (SQ.FT.)	TYPE	EXPOSURE	PRICE
THE BONET	SOUTH D - 121	760	1 BEDROOM + DEN / 1 BATHROOM	E	\$692,900
THE ARMSTRONG ²	SOUTH D - 228	978	2 BEDROOMS + DEN / 2 BATHROOMS	W	\$910,900
THE FAIRLEY ²	SOUTH D - 115	978	2 BEDROOMS + DEN / 2 BATHROOMS	W	\$915,900

² SUITES DO NOT QUALIFY TO PURCHASE A LOCKER

DANIELS & BAIF

BOULEVARD

— AT THE THORNHILL —

A Master-Planned Community on Bathurst

<p style="text-align: center;">20% EXTENDED DEPOSIT</p> <p>\$7,000 WITH AGREEMENT OF PURCHASE & SALE</p> <p style="text-align: center;">THE BALANCE OF 5% IN 30 DAYS</p> <p style="text-align: center;">1% IN 90 DAYS</p> <p style="text-align: center;">1% IN 120 DAYS</p> <p style="text-align: center;">1% IN 150 DAYS</p> <p style="text-align: center;">1% IN 180 DAYS</p> <p style="text-align: center;">1% IN 210 DAYS</p> <p style="text-align: center;">5% IN 400 DAYS</p> <p style="text-align: center;">5% ON OCCUPANCY</p> <p style="text-align: center;">PLEASE MAKE DEPOSIT CHEQUES PAYABLE TO "BRATTYS LLP IN TRUST"</p>	<p style="text-align: center;">MAINTENANCE FEES</p> <p style="text-align: center;">\$0.60 / SQ. FT.</p> <p style="text-align: center;">INCLUDES ROGERS IGNITE™ GIGABIT (HYDRO METERED SEPARATELY)</p> <p style="text-align: center;">HALF SIZE LOCKER MAINTENANCE \$30 / MONTH FULL SIZE LOCKER MAINTENANCE \$35 / MONTH</p> <p style="text-align: center;">PARKING MAINTENANCE \$60 / MONTH</p> <hr/> <p style="text-align: center;">TAXES</p> <p style="text-align: center;">ESTIMATED AT APPROXIMATELY 1% OF PURCHASE PRICE</p> <p style="text-align: center;">H.S.T. INCLUDED FOR ALL OWNER-OCCUPIED SUITES, FOR INVESTOR PURCHASES PLEASE SEE A SALES REPRESENTATIVE.</p>
<p>STUDIOS - TWO BEDROOM SUITE TYPES QUALIFY TO PURCHASE A HALF-SIZE LOCKER: \$3,000 PER LOCKER</p> <p>TWO BEDROOM PLUS DEN & LARGER SUITE TYPES QUALIFY TO PURCHASE A FULL-SIZE LOCKER: \$5,000 PER LOCKER</p> <p>EXCEPTION: Locker is not available for The Armstrong, The Campbell, The Dannie, The Fairley, The Leonard, The Martin, The Paige, The Rothstein, The Summit Ridge, The Thomson models.</p>	
<p>ALL SUITE TYPES QUALIFY TO PURCHASE A PARKING UNIT: \$50,000 PER PARKING UNIT</p> <p>PLEASE SEE A SALES REPRESENTATIVE FOR DETAILS</p>	
<p>OCCUPANCY COMMENCING FALL 2023</p>	

*Please see a Sales Representative for details. All prices, specifications, incentives, figures, and materials are subject to change without notice E. & O.E. May 29, 2021

EXCLUSIVE LISTING BROKERAGE: CITY LIFE REALTY LTD., BROKERAGE. Brokers Protected.

BOULEVARD

— AT THE THORNHILL —

North Condominium

The Tundra

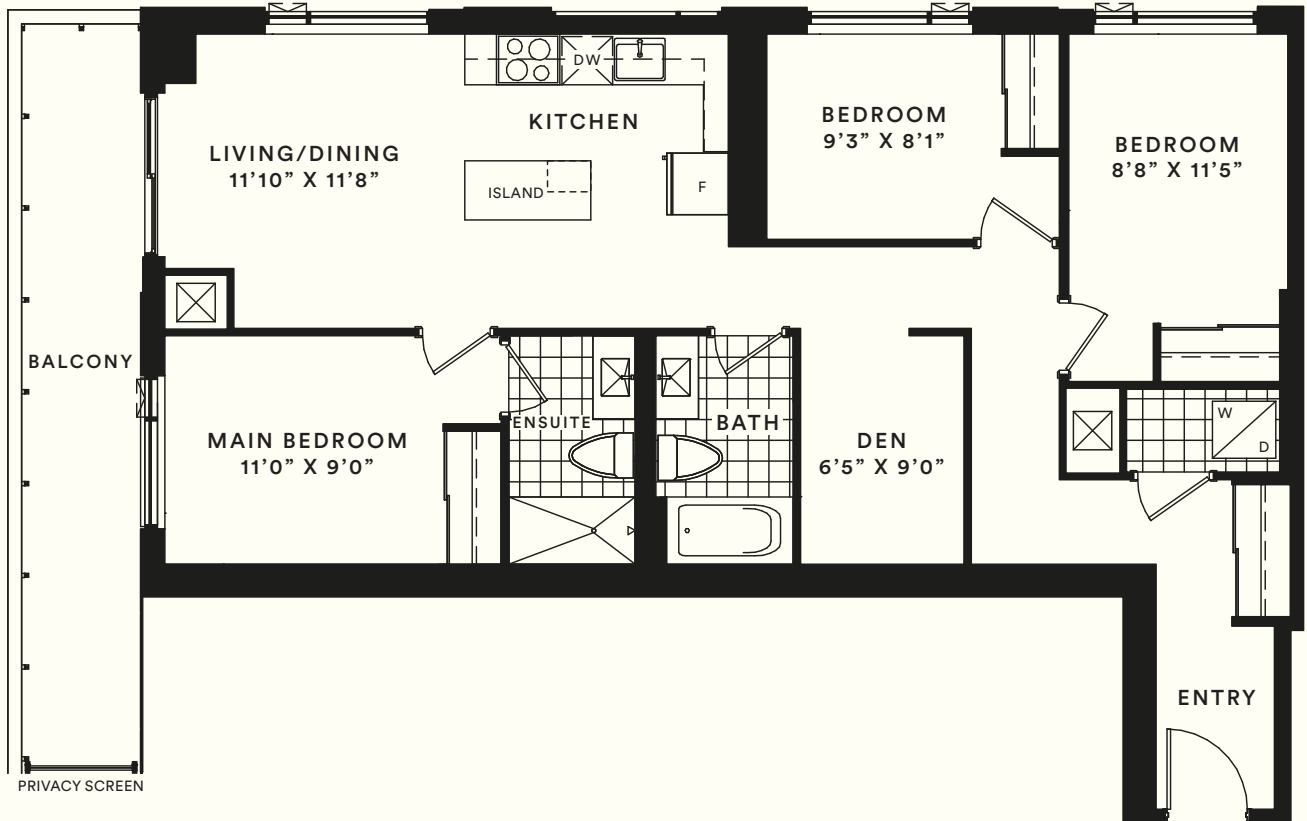
1A

THREE BEDROOM + DEN

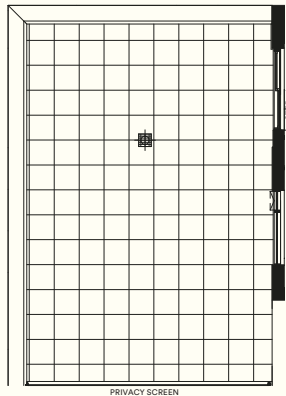
Suite area: 1,119 sq.ft.

Outdoor area: 139-558 sq.ft.

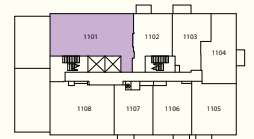
Total area: 1,258-1,677 sq.ft.



TERRACE (11TH FLOOR ONLY)
 OUTDOOR AREA IS 558 SQ.FT.
 TOTAL AREA IS 1,677 SQ.FT.



FLOOR 12



FLOOR 11

BEVERLEY GLEN BLVD.



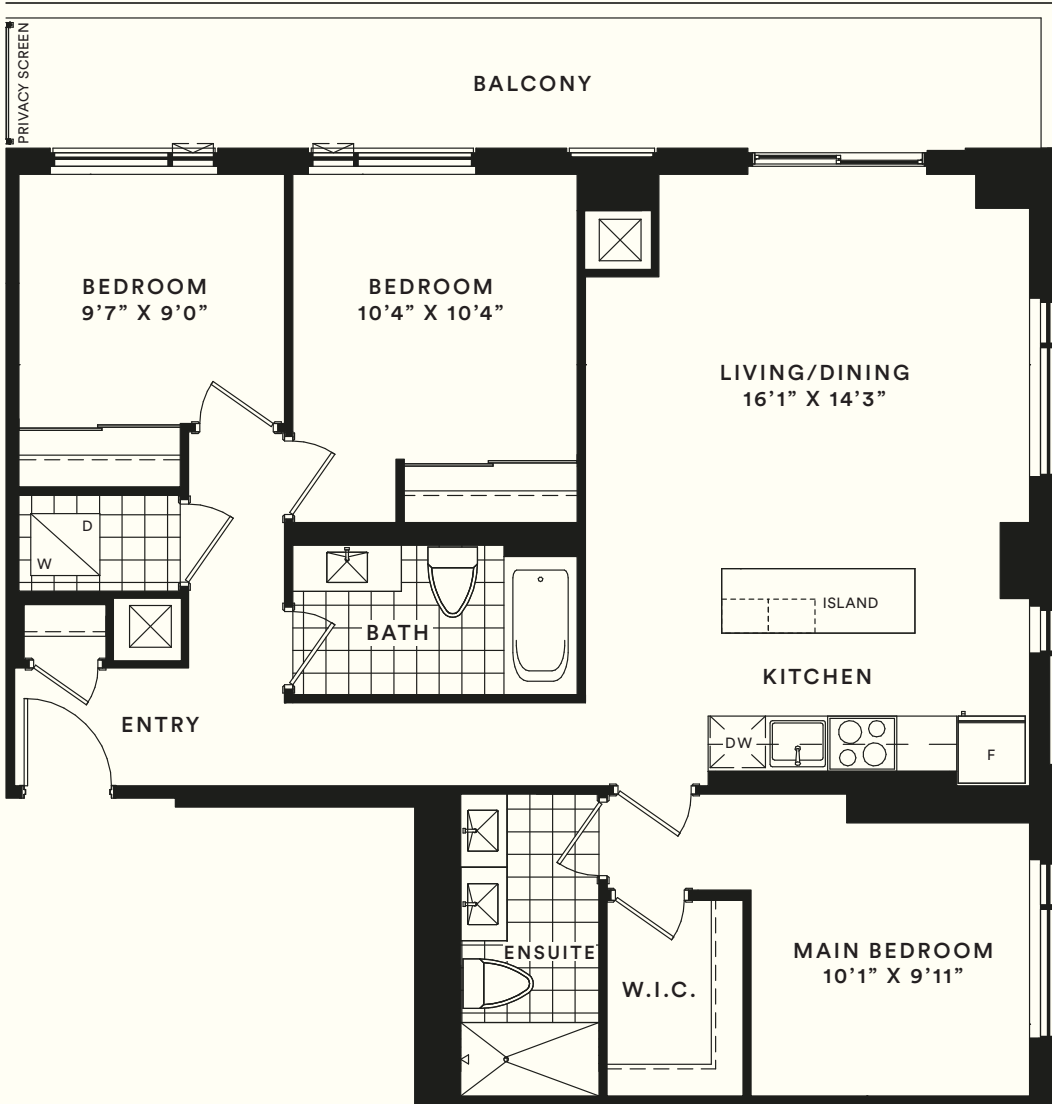
BATHURST ST.

THREE BEDROOM

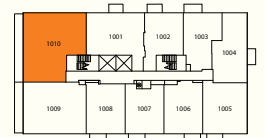
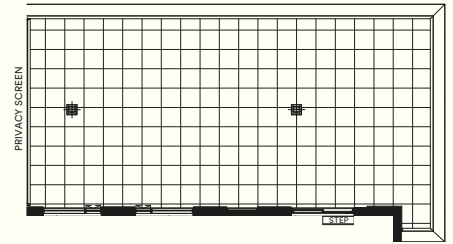
Suite area: 1,157 sq.ft.

Outdoor area: 176-800 sq.ft.

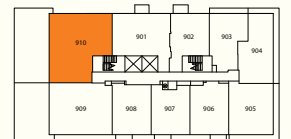
Total area: 1,333-1,957 sq.ft.



TERRACE (9TH FLOOR ONLY)
OUTDOOR AREA IS 800 SQ.FT.
TOTAL AREA IS 1,957 SQ.FT.



FLOOR 10



FLOOR 9

BEVERLEY GLEN BLVD.



BATHURST ST.

BOULEVARD

— AT THE THORNHILL —

North Condominium

The Lake

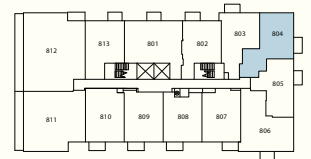
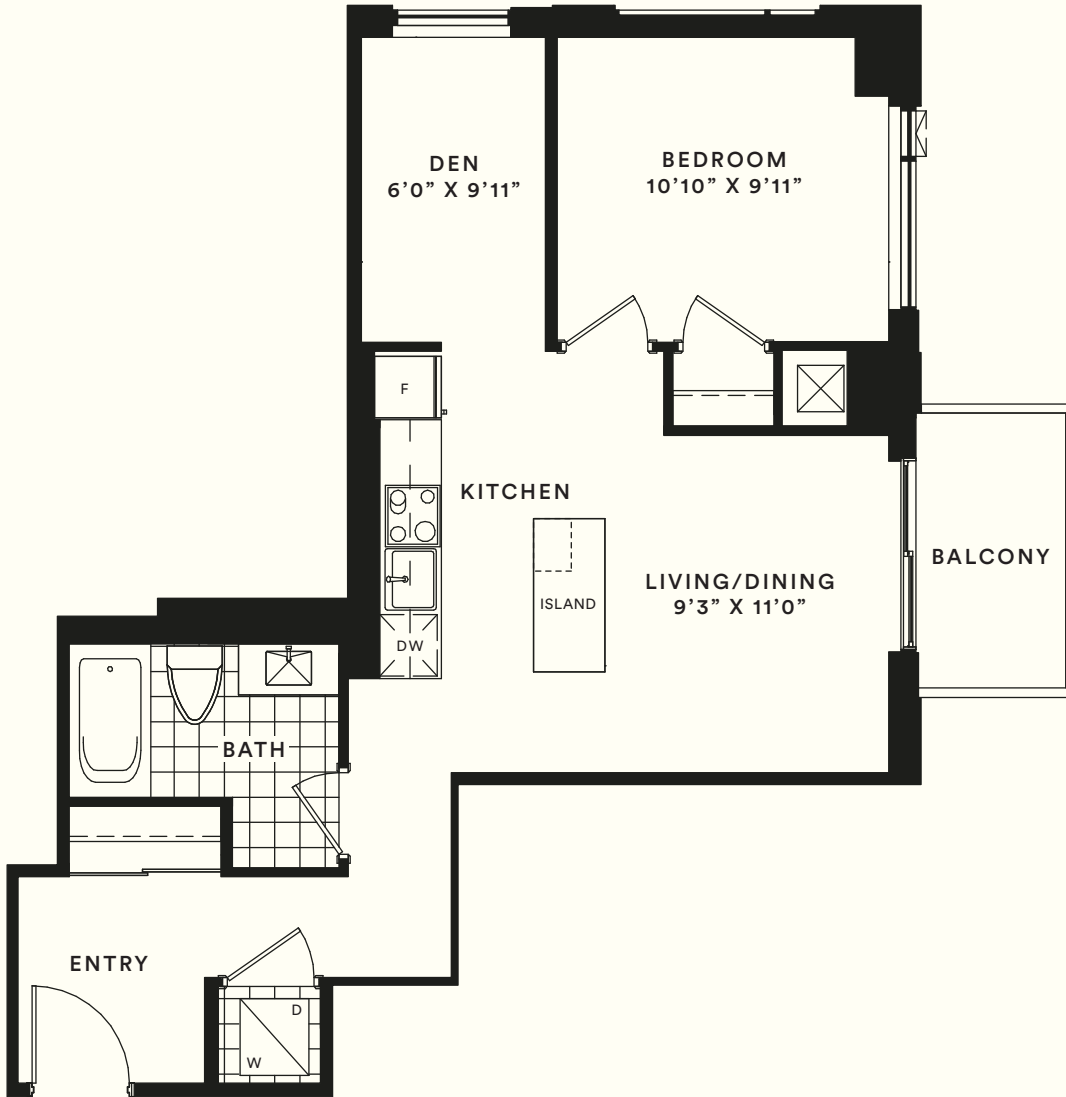
13A

ONE BEDROOM + DEN

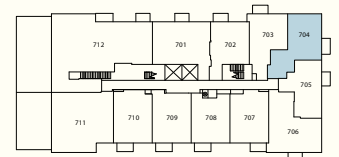
Suite area: 660 sq.ft.

Outdoor area: 41 sq.ft.

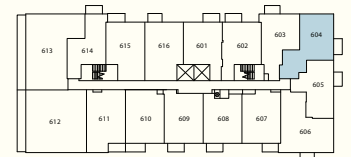
Total area: 701 sq.ft.



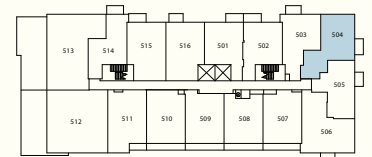
FLOOR 8



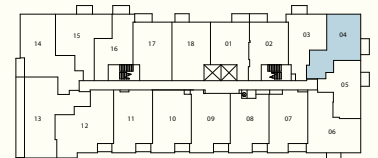
FLOOR 7



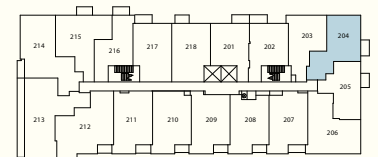
FLOOR 6



FLOOR 5



FLOORS 3-4



FLOOR 2

BEVERLEY GLEN BLVD.

BATHURST ST.



BOULEVARD

— AT THE THORNHILL —

North Condominium

The Coast

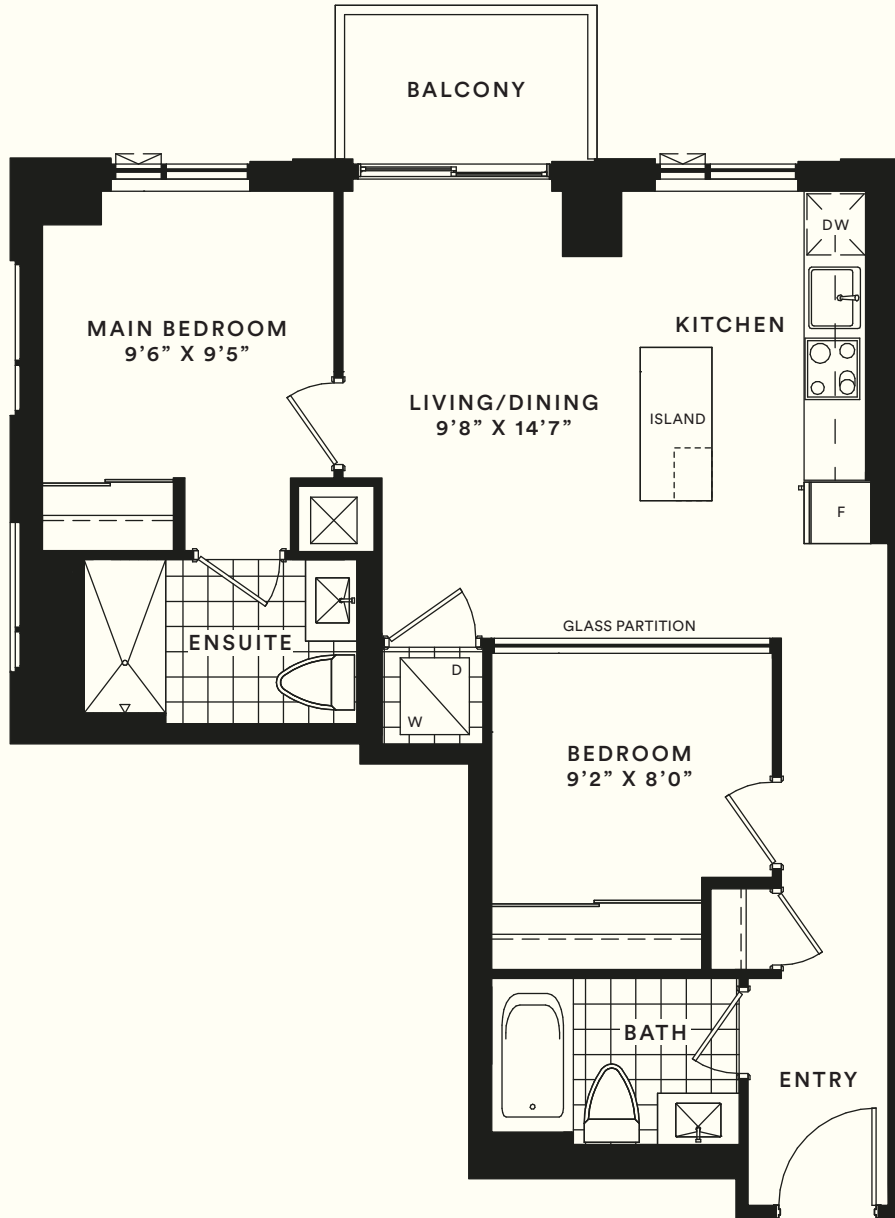
15B

TWO BEDROOM

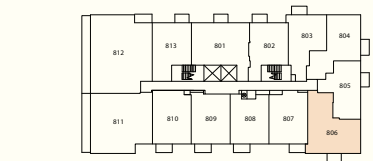
Suite area: 760 sq.ft.

Outdoor area: 0-37 sq.ft.

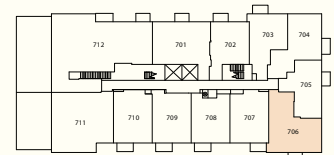
Total area: 760-797 sq.ft.



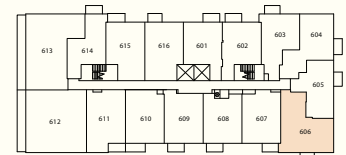
NO BALCONY (2ND FLOOR ONLY)
OUTDOOR AREA IS 0 SQ.FT.
TOTAL AREA IS 760 SQ.FT.



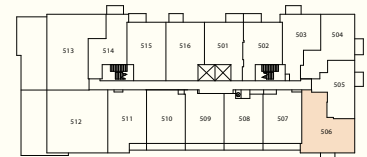
FLOOR 8



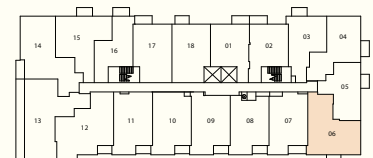
FLOOR 7



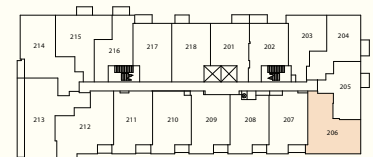
FLOOR 6



FLOOR 5



FLOORS 3-4



FLOOR 2

BEVERLEY GLEN BLVD.

BATHURST ST.



DANIELS & BAIF

BOULEVARD

— AT THE THORNHILL —

North Condominium

The Trail

17A (BF)

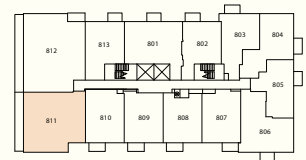
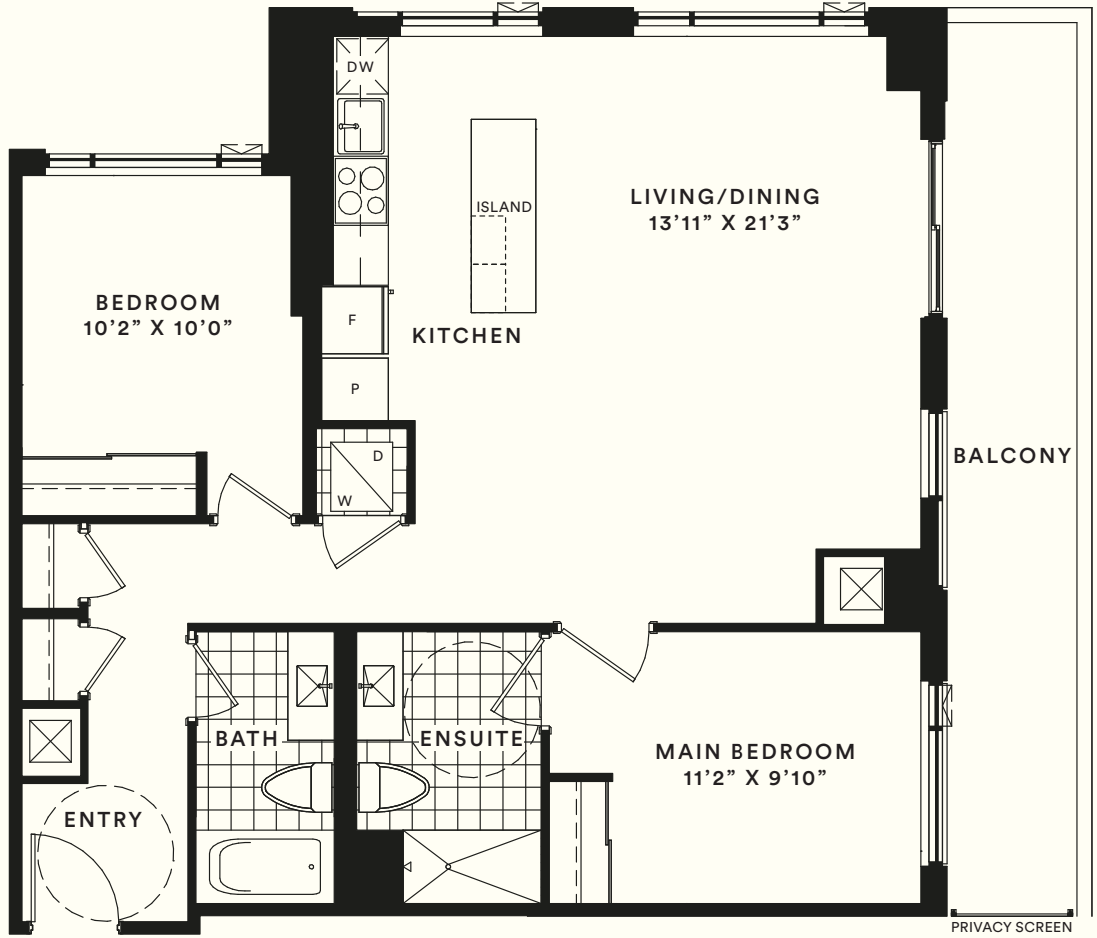
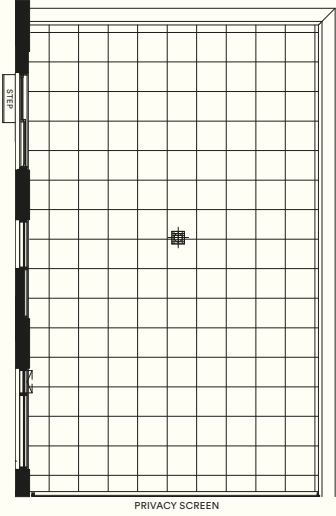
TWO BEDROOM

Suite area: 1,070 sq.ft.

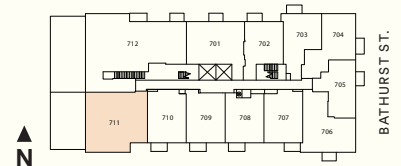
Outdoor area: 152-608 sq.ft.

Total area: 1,222-1,678 sq.ft.

TERRACE (7TH FLOOR ONLY)
OUTDOOR AREA IS 608 SQ.FT.
TOTAL AREA IS 1,678 SQ.FT.



FLOOR 8



FLOOR 7

BEVERLEY GLEN BLVD.

DANIELS & BAIF

BOULEVARD

— AT THE THORNHILL —

North Condominium

The Summit Ridge

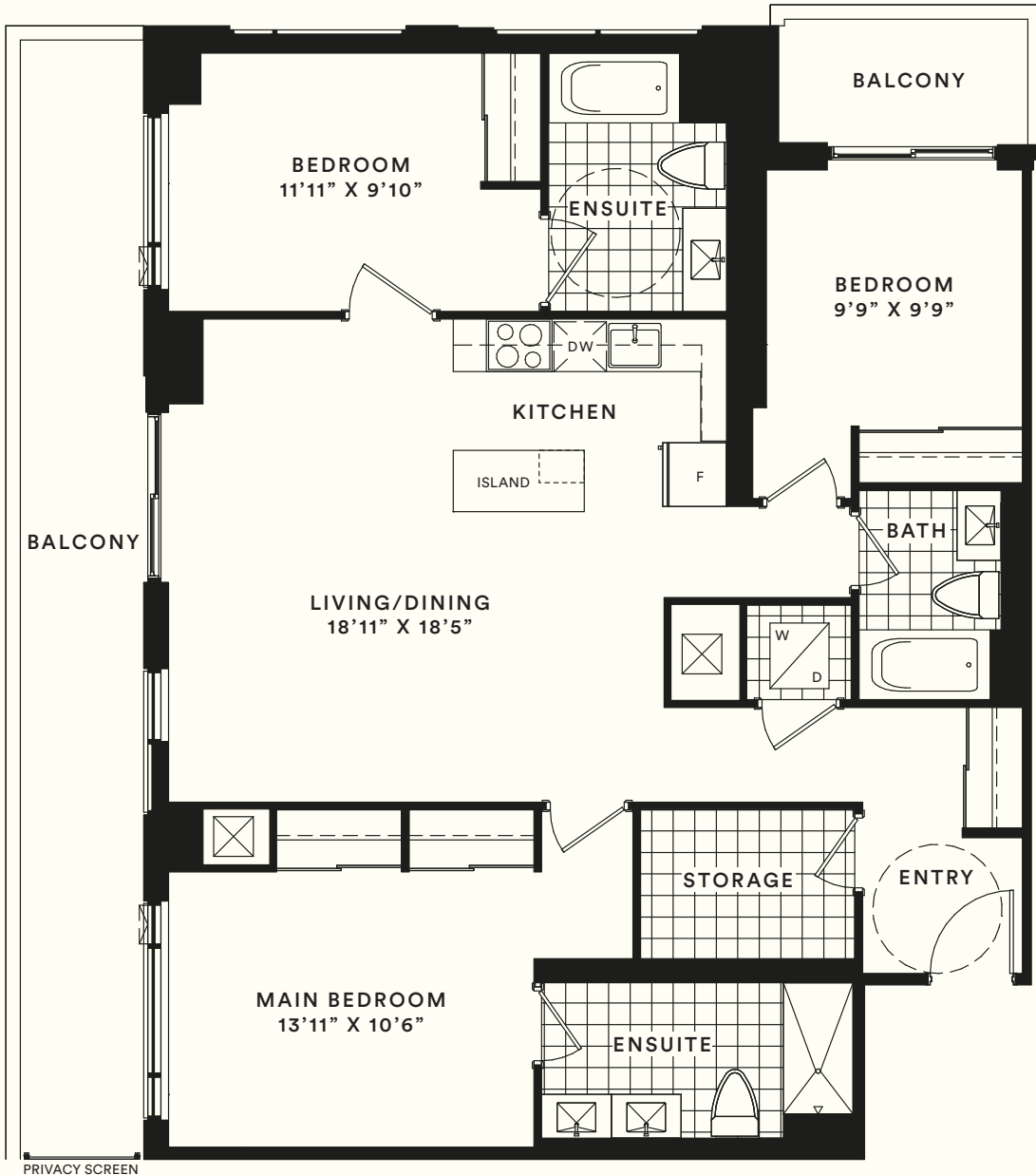
18A (BF)

THREE BEDROOM

Suite area: 1,380 sq.ft.

Outdoor area: 246 sq.ft.

Total area: 1,626 sq.ft.



BOULEVARD

— AT THE THORNHILL —

North Condominium

The Valley Vista

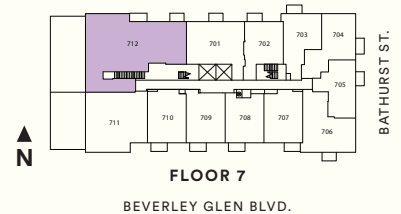
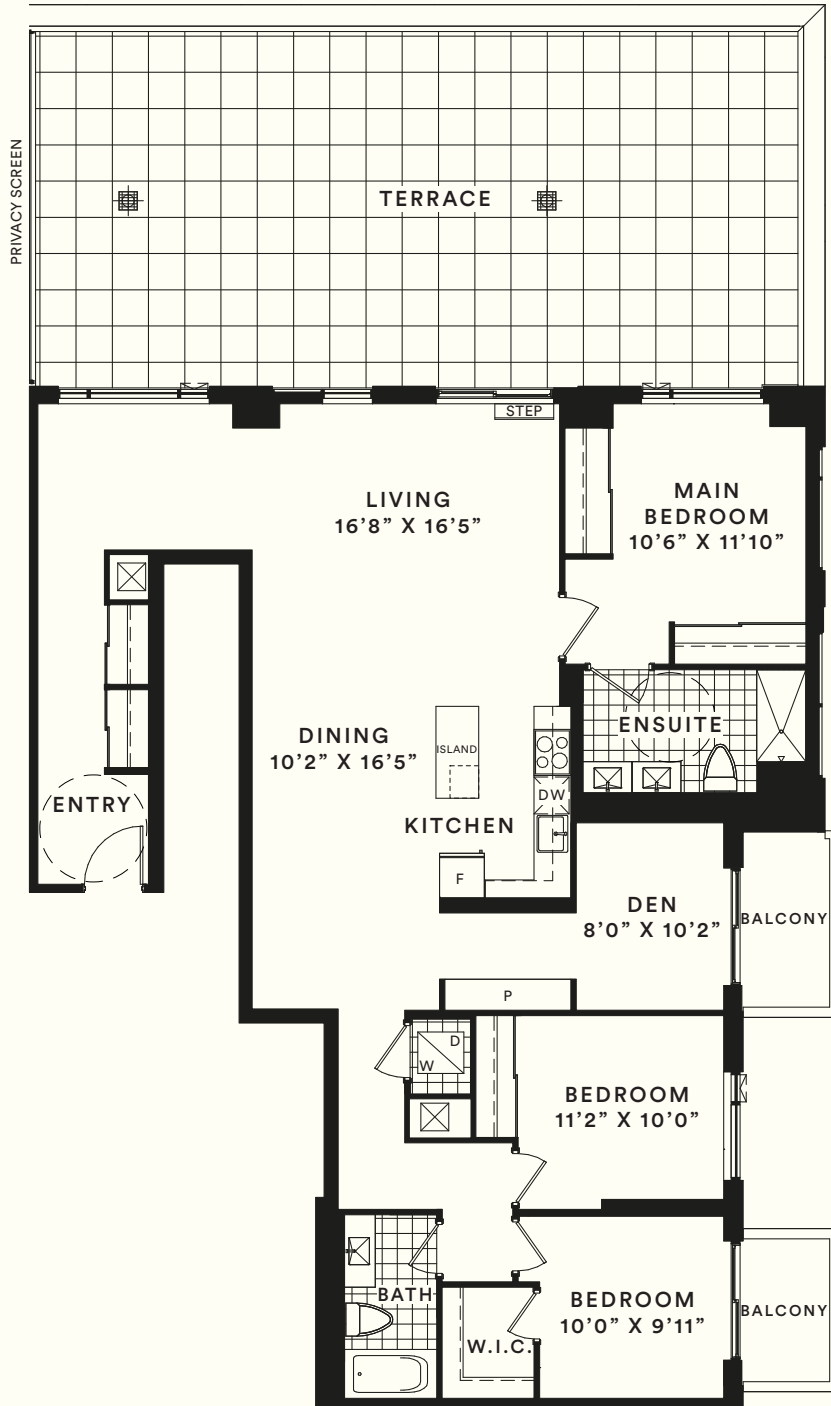
20T (BF)

THREE BEDROOM + DEN

Suite area: 1,772 sq.ft.

Outdoor area: 892 sq.ft.

Total area: 2,664 sq.ft.



DANIELS & BAIF

BOULEVARD

— AT THE THORNHILL —

North Condominium

The Trail Greens

22A

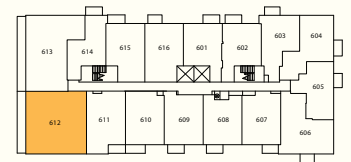
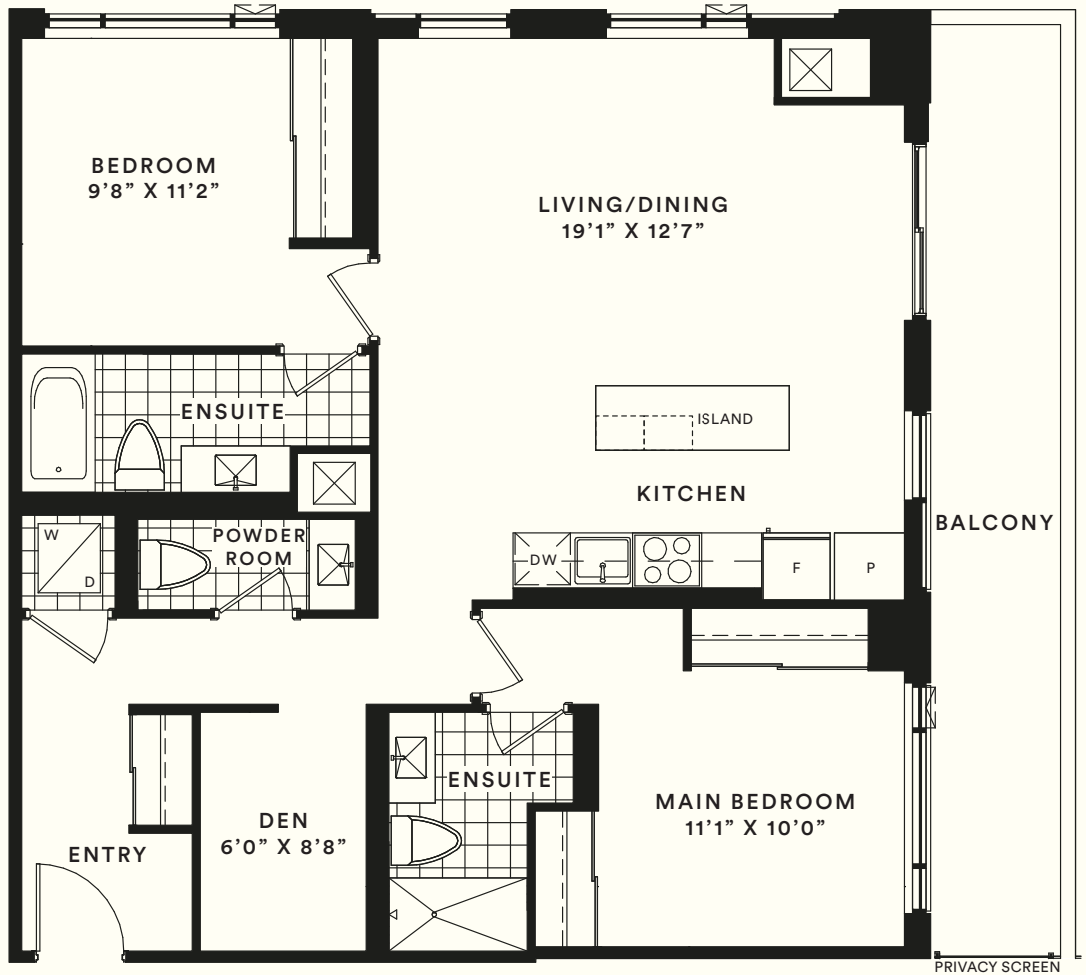
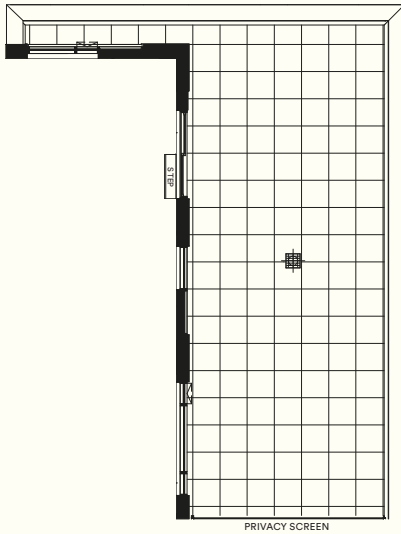
TWO BEDROOM + DEN

Suite area: 1,148 sq.ft.

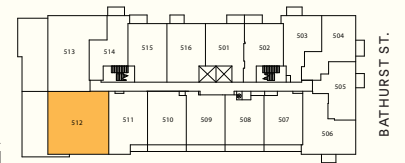
Outdoor area: 159-527 sq.ft.

Total area: 1,307-1,675 sq.ft.

TERRACE (5TH FLOOR ONLY)
OUTDOOR AREA IS 527 SQ.FT.
TOTAL AREA IS 1,675 SQ.FT.



FLOOR 6



FLOOR 5

BEVERLEY GLEN BLVD.

DANIELS & BAIF

BOULEVARD

— AT THE THORNHILL —

North Condominium

The River Wood

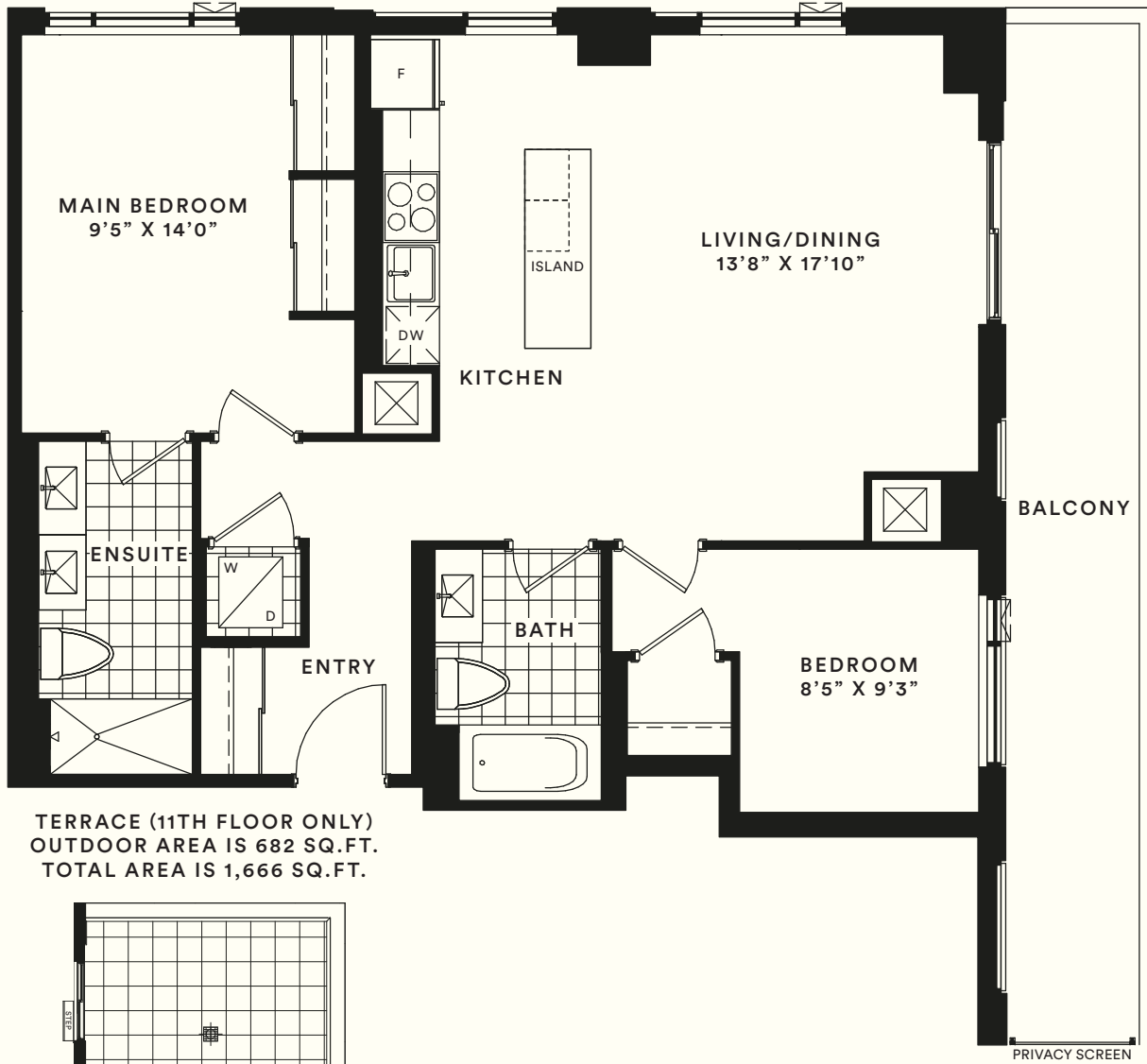
24A

TWO BEDROOM

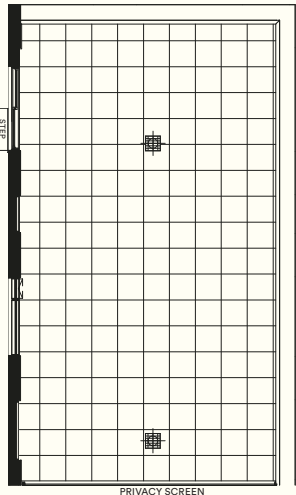
Suite area: 984 sq.ft.

Outdoor area: 169-682 sq.ft.

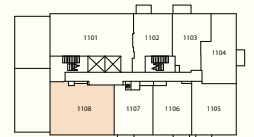
Total area: 1,153-1,666 sq.ft.



TERRACE (11TH FLOOR ONLY)
 OUTDOOR AREA IS 682 SQ.FT.
 TOTAL AREA IS 1,666 SQ.FT.



FLOOR 12



FLOOR 11

BEVERLY GLEN BLVD.



BATHURST ST.

DANIELS & BAIF

BOULEVARD

AT THE THORNHILL

North Condominium

The Woodlot

29A (BF)

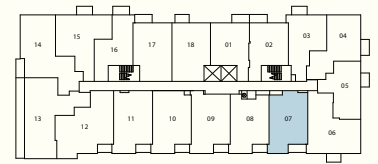
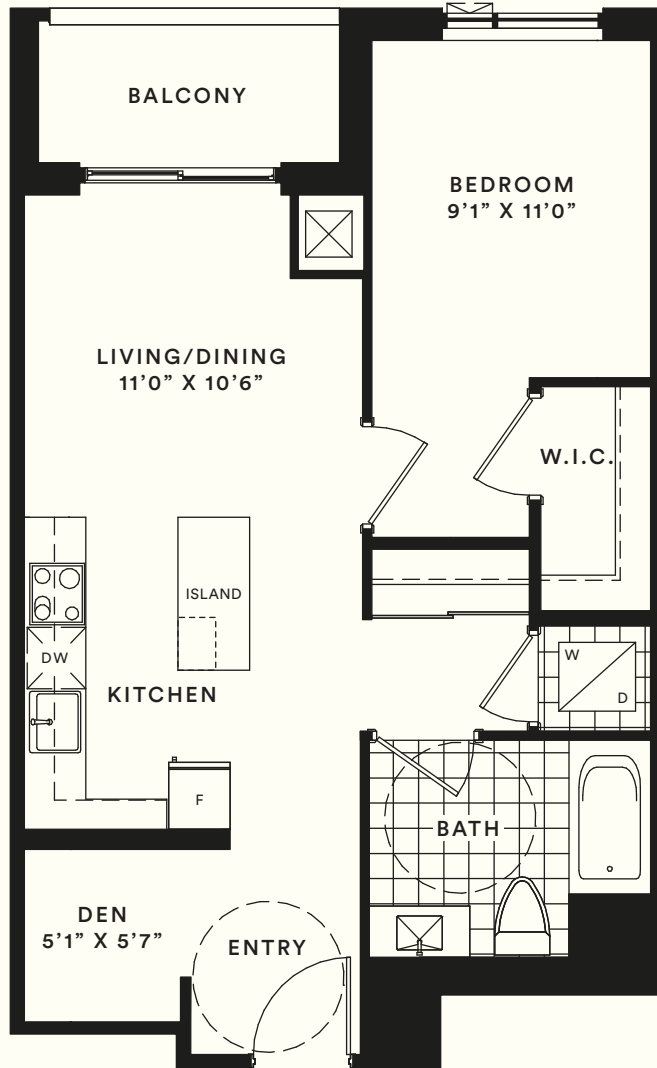
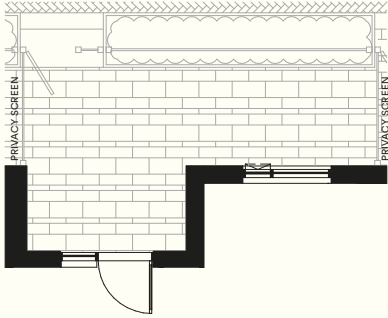
ONE BEDROOM + DEN

Suite area: 663 sq.ft.

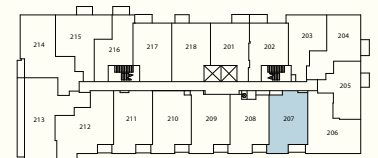
Outdoor area: 41-178 sq.ft.

Total area: 704-841 sq.ft.

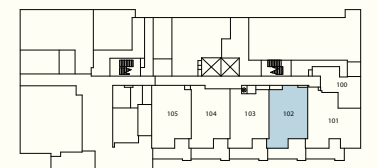
TERRACE (GROUND FLOOR ONLY)
OUTDOOR AREA IS 178 SQ.FT.
TOTAL AREA IS 841 SQ.FT.



FLOORS 3-4



FLOOR 2



GROUND FLOOR

BEVERLEY GLEN BLVD.



BATHURST ST.

DANIELS & BAIF

BOULEVARD

— AT THE THORNHILL —

North Condominium

The Wood Wind

30A

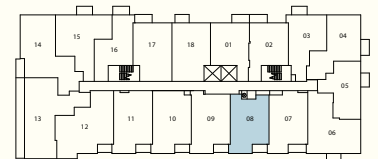
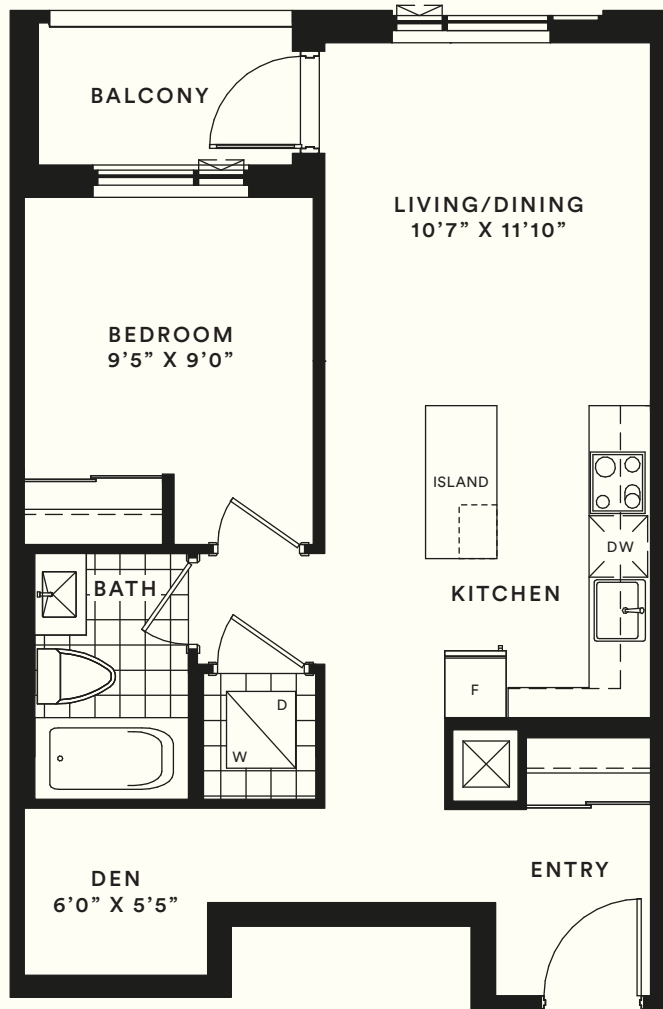
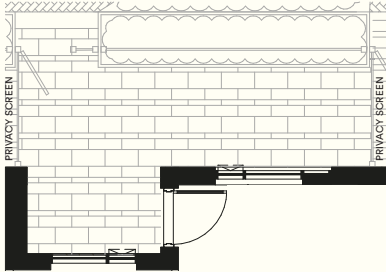
ONE BEDROOM + DEN

Suite area: 633 sq.ft.

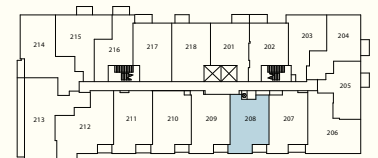
Outdoor area: 34-170 sq.ft.

Total area: 667-803 sq.ft.

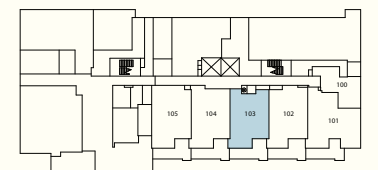
TERRACE (GROUND FLOOR ONLY)
OUTDOOR AREA IS 170 SQ.FT.
TOTAL AREA IS 803 SQ.FT.



FLOORS 3-4



FLOOR 2



GROUND FLOOR

BEVERLEY GLEN BLVD.



BATHURST ST.

DANIELS & BAIF

BOULEVARD

— AT THE THORNHILL —

North Condominium

The Hill View

31A

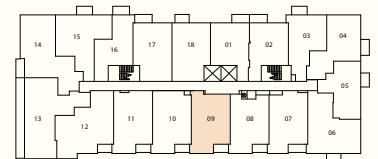
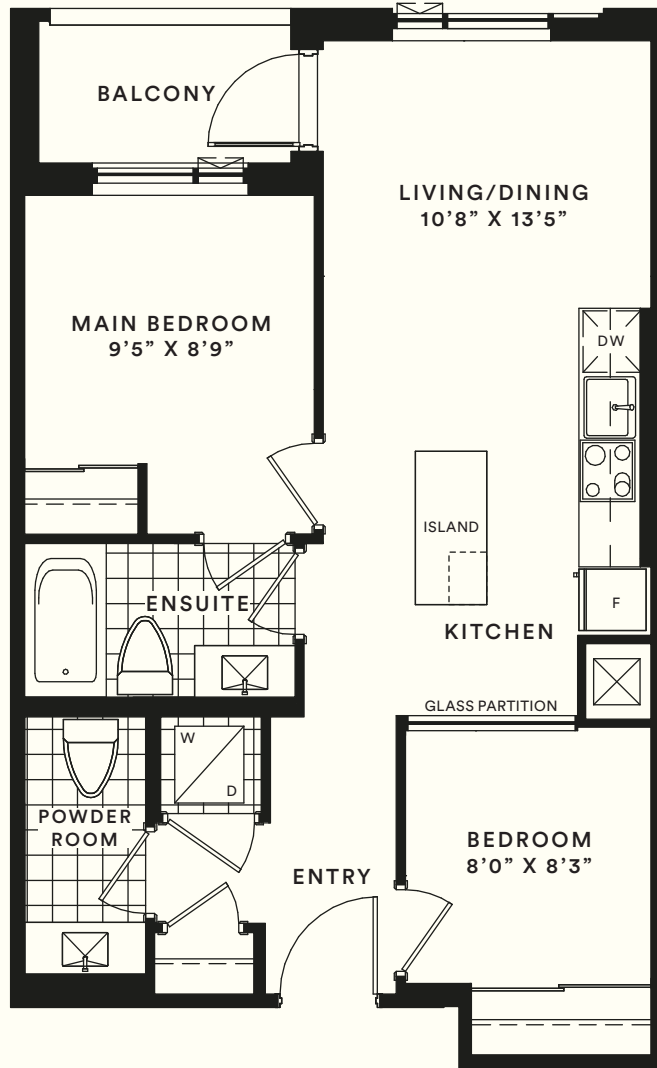
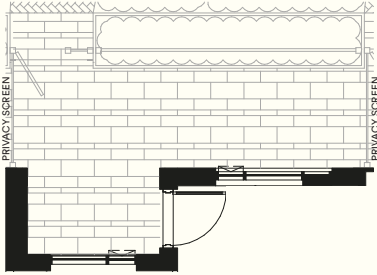
TWO BEDROOM

Suite area: 668 sq.ft.

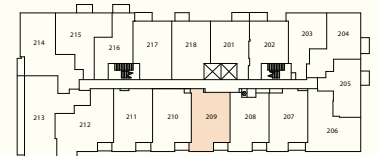
Outdoor area: 34-169 sq.ft.

Total area: 702-837 sq.ft.

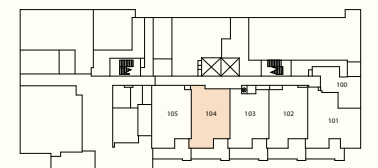
TERRACE (GROUND FLOOR ONLY)
OUTDOOR AREA IS 169 SQ.FT.
TOTAL AREA IS 837 SQ.FT.



FLOORS 3-4



FLOOR 2



GROUND FLOOR

BEVERLEY GLEN BLVD.



BATHURST ST.

DANIELS & BAIF

BOULEVARD

— AT THE THORNHILL —

North Condominium

The Canyon

32A

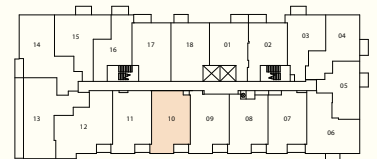
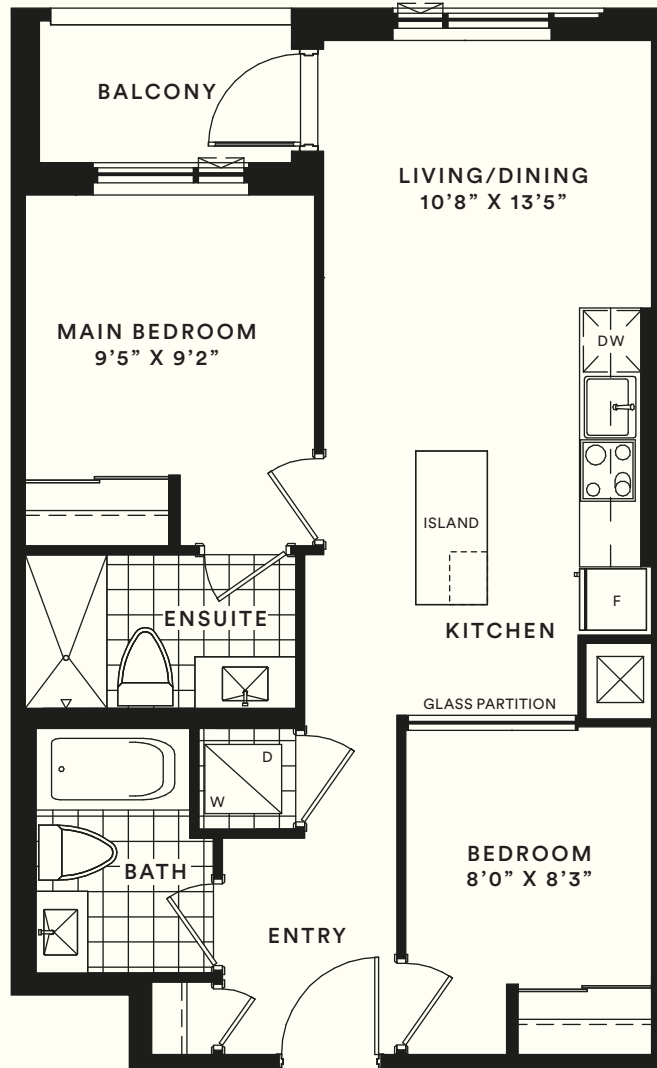
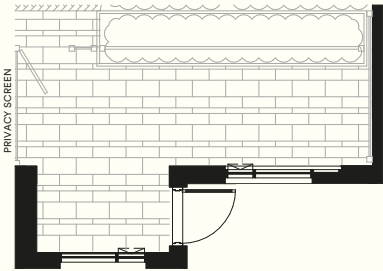
TWO BEDROOM

Suite area: 696 sq.ft.

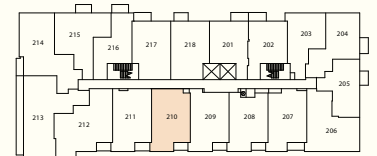
Outdoor area: 34-170 sq.ft.

Total area: 730-866 sq.ft.

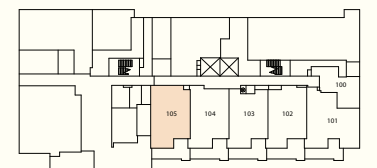
TERRACE (GROUND FLOOR ONLY)
OUTDOOR AREA IS 170 SQ.FT.
TOTAL AREA IS 866 SQ.FT.



FLOORS 3-4



FLOOR 2



GROUND FLOOR

BEVERLEY GLEN BLVD.



BATHURST ST.

DANIELS & BAIF

BOULEVARD

— AT THE THORNHILL —

North Condominium

The Lily Field

33A

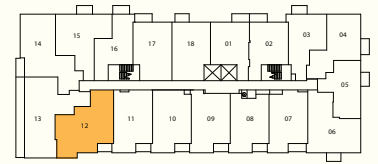
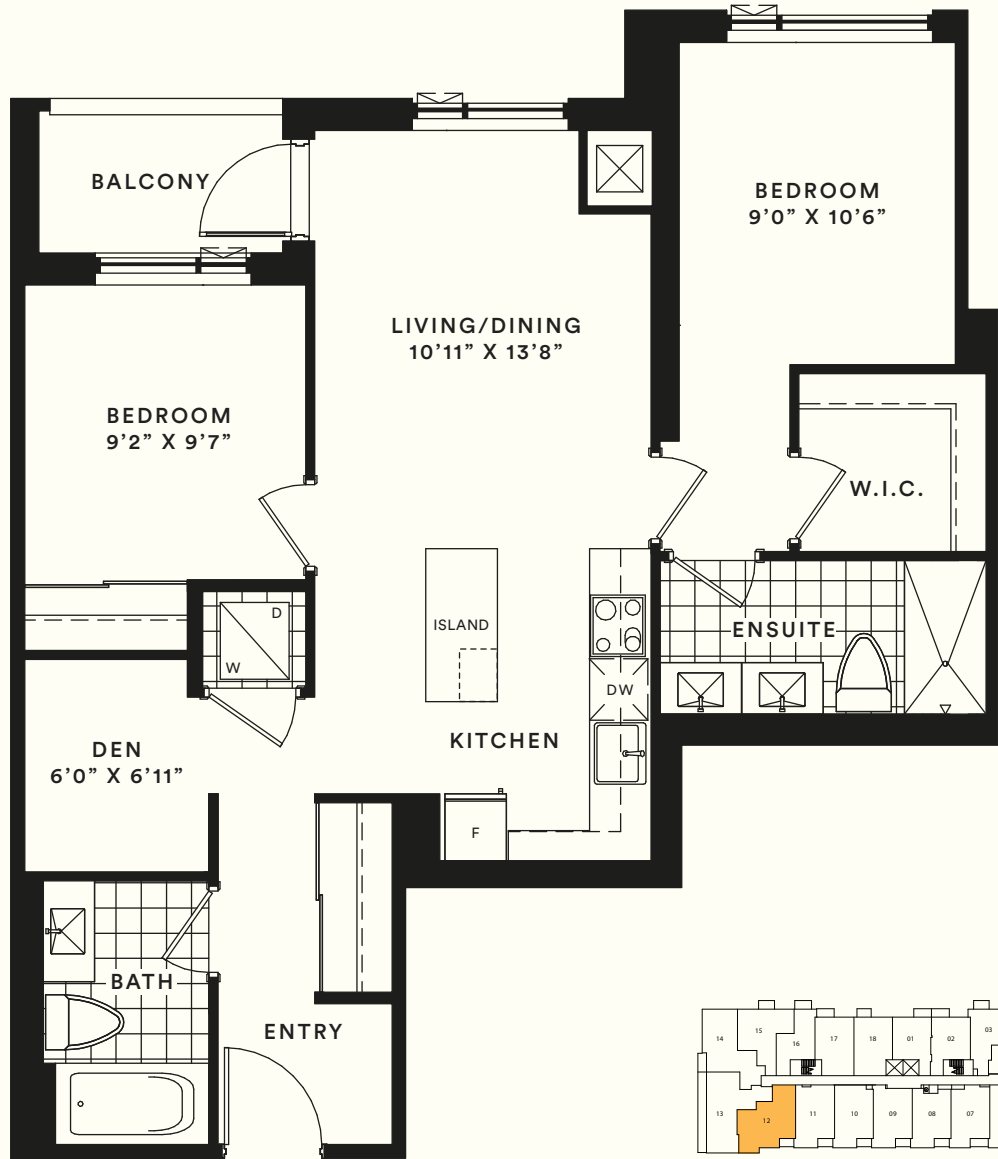
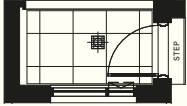
TWO BEDROOM + DEN

Suite area: 870 sq.ft.

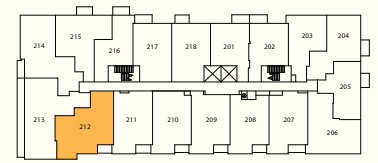
Outdoor area: 36 sq.ft.

Total area: 906 sq.ft.

TERRACE (2ND FLOOR ONLY)
OUTDOOR AREA IS 36 SQ.FT.
TOTAL AREA IS 906 SQ.FT.



FLOORS 3-4



FLOOR 2

BEVERLEY GLEN BLVD.



BATHURST ST.

BOULEVARD

— AT THE THORNHILL —

North Condominium

The Shire Meadow

34A

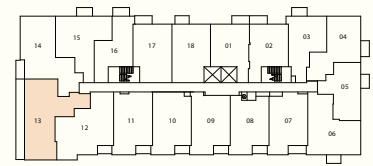
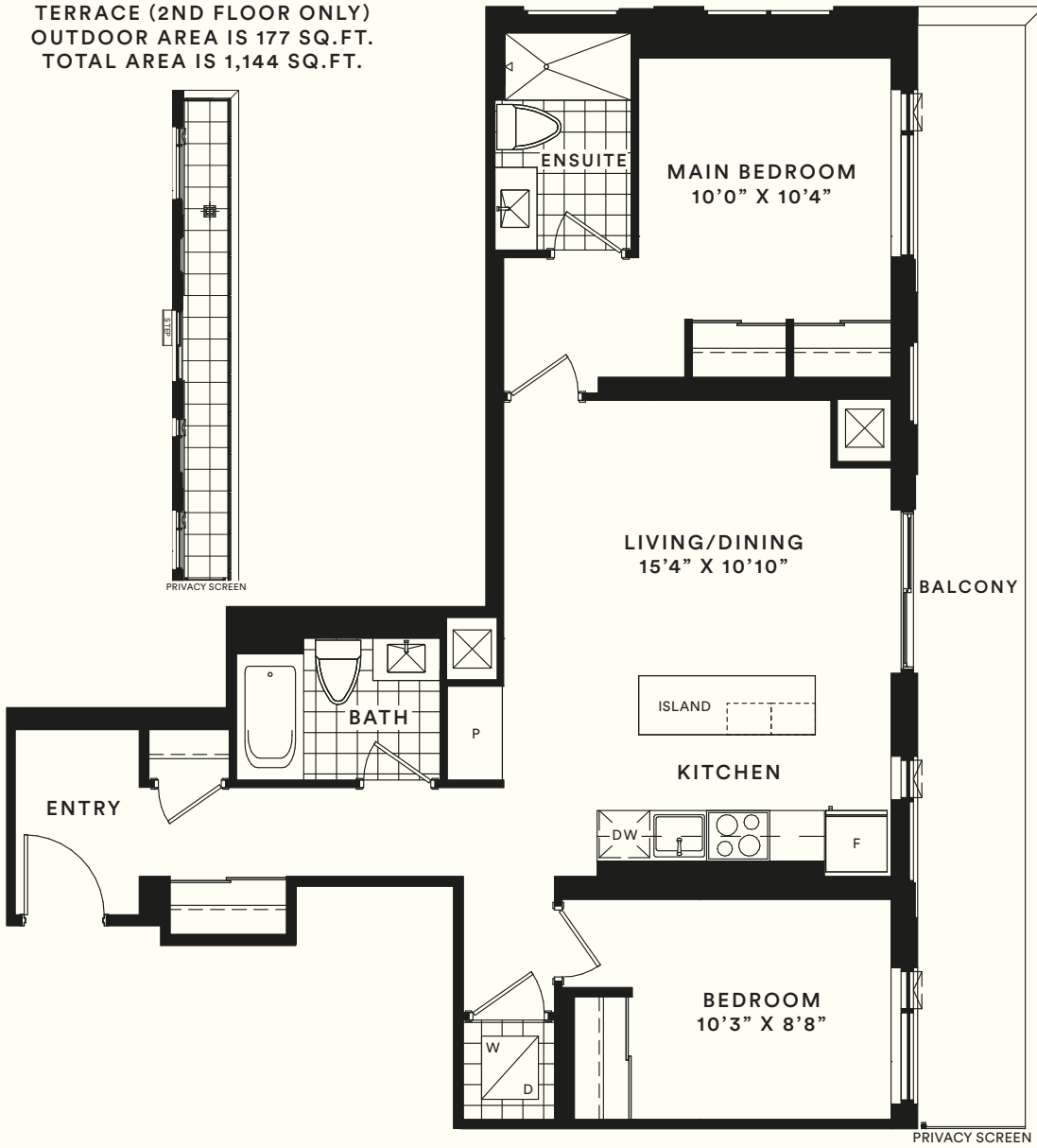
TWO BEDROOM

Suite area: 967 sq.ft.

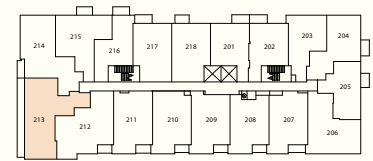
Outdoor area: 177-208 sq.ft.

Total area: 1,144-1,175 sq.ft.

TERRACE (2ND FLOOR ONLY)
OUTDOOR AREA IS 177 SQ.FT.
TOTAL AREA IS 1,144 SQ.FT.



FLOORS 3-4



FLOOR 2

BEVERLEY GLEN BLVD.

BATHURST ST.



BOULEVARD

— AT THE THORNHILL —

North Condominium

The Gilded Bloom

35A

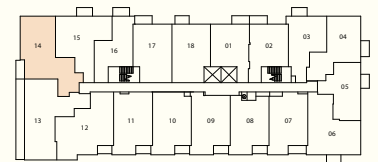
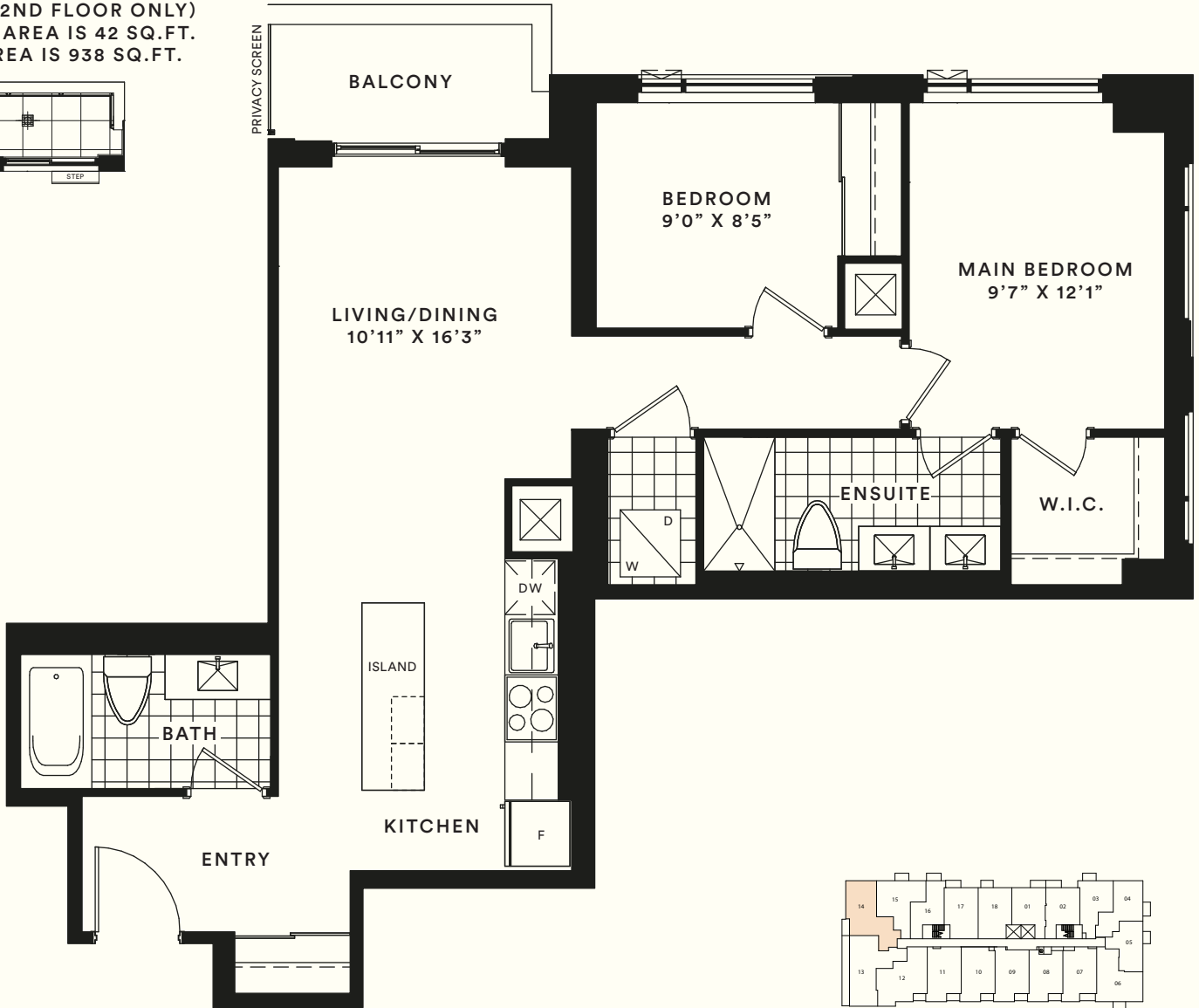
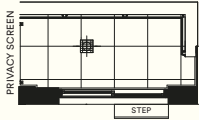
TWO BEDROOM

Suite area: 896 sq.ft.

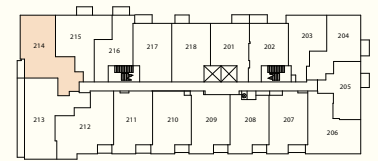
Outdoor area: 42-50 sq.ft.

Total area: 938-946 sq.ft.

TERRACE (2ND FLOOR ONLY)
OUTDOOR AREA IS 42 SQ.FT.
TOTAL AREA IS 938 SQ.FT.



FLOORS 3-4



FLOOR 2

BEVERLEY GLEN BLVD.



BATHURST ST.

DANIELS & BAIF

BOULEVARD

— AT THE THORNHILL —

North Condominium

The Trailhead

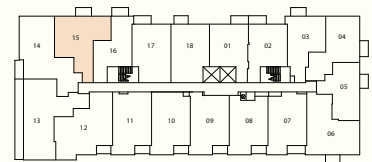
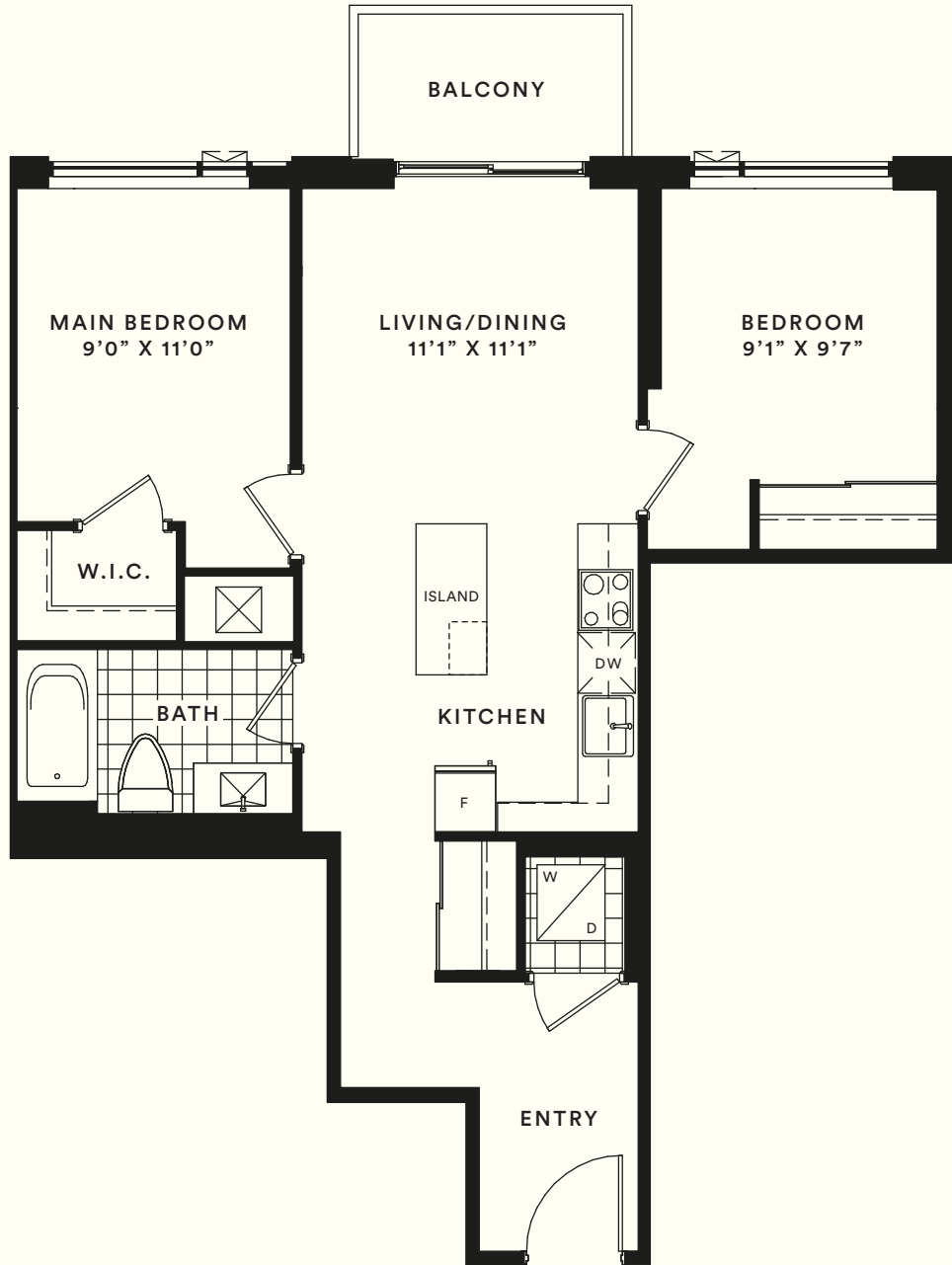
36A

TWO BEDROOM

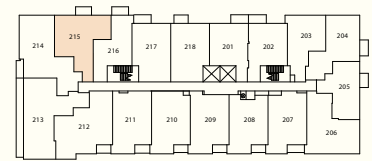
Suite area: 733 sq.ft.

Outdoor area: 41 sq.ft.

Total area: 774 sq.ft.



FLOORS 3-4



FLOOR 2

BEVERLEY GLEN BLVD.



BATHURST ST.

BOULEVARD

— AT THE THORNHILL —

North Condominium

The Riverbed

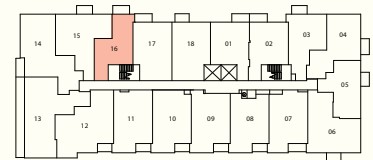
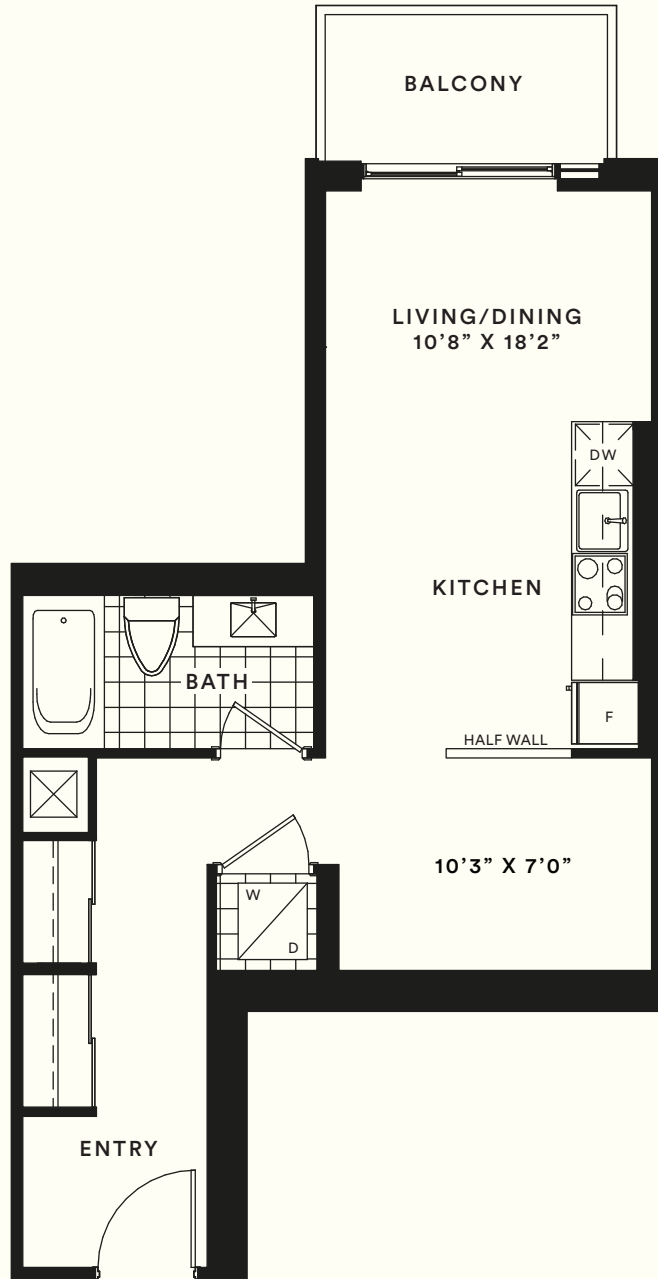
37A

STUDIO

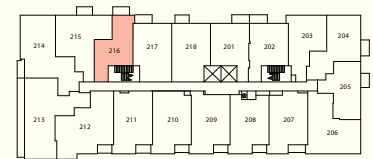
Suite area: 530 sq.ft.

Outdoor area: 43 sq.ft.

Total area: 573 sq.ft.



FLOORS 3-4



FLOOR 2

BEVERLEY GLEN BLVD.

BATHURST ST.



BOULEVARD

— AT THE THORNHILL —

North Condominium

The Spring Field

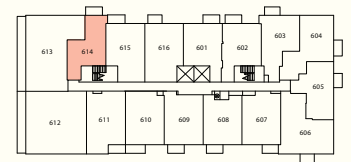
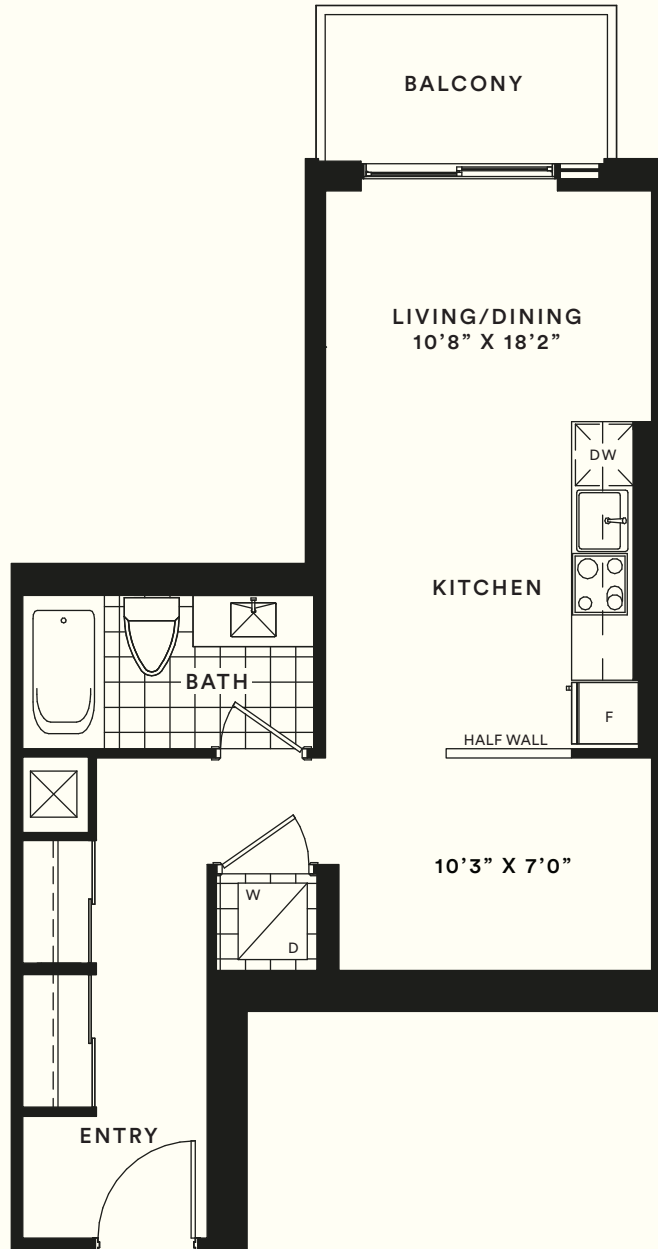
37B

STUDIO

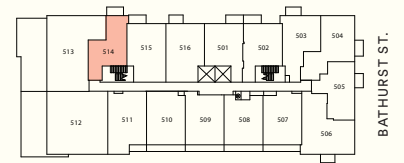
Suite area: 523 sq.ft.

Outdoor area: 43 sq.ft.

Total area: 566 sq.ft.



FLOOR 6



FLOOR 5

BOULEVARD

— AT THE THORNHILL —

South Condominium

The Pratt

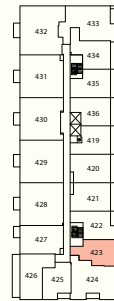
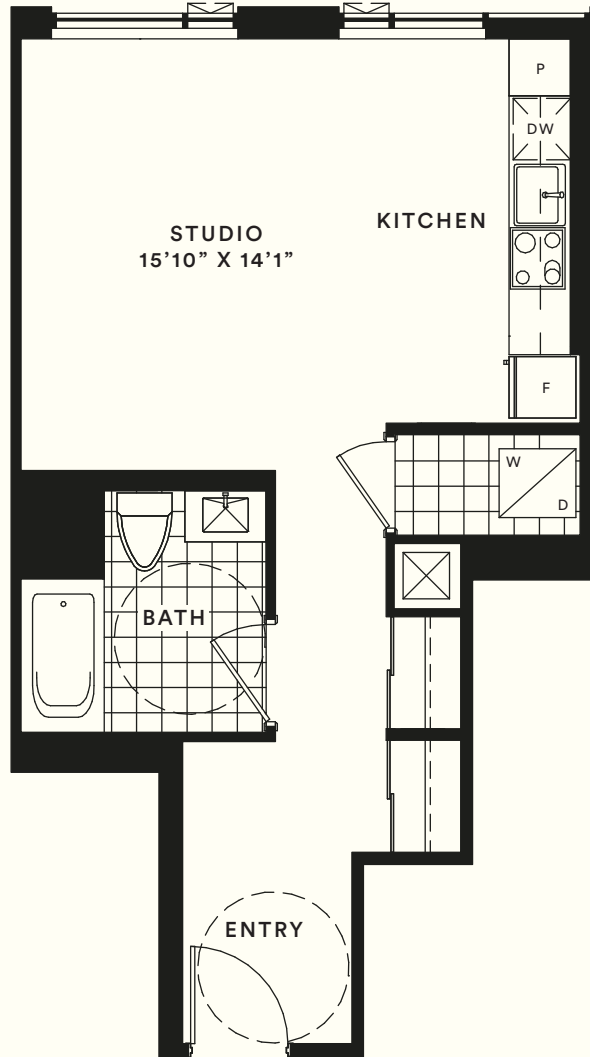
17A (BF)

STUDIO

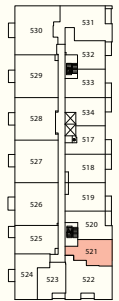
Suite area: 523 sq.ft.

Outdoor area: 0 sq.ft.

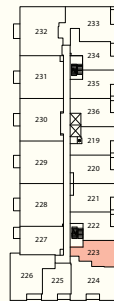
Total area: 523 sq.ft.



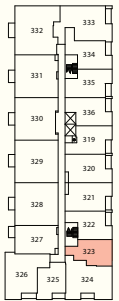
FLOOR 4



FLOOR 5



FLOOR 2



FLOOR 3



BEVERLEY GLEN BLVD.

BATHURST ST.

BOULEVARD

— AT THE THORNHILL —

South Condominium

The Arthur

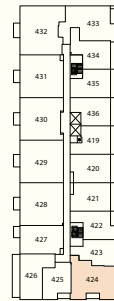
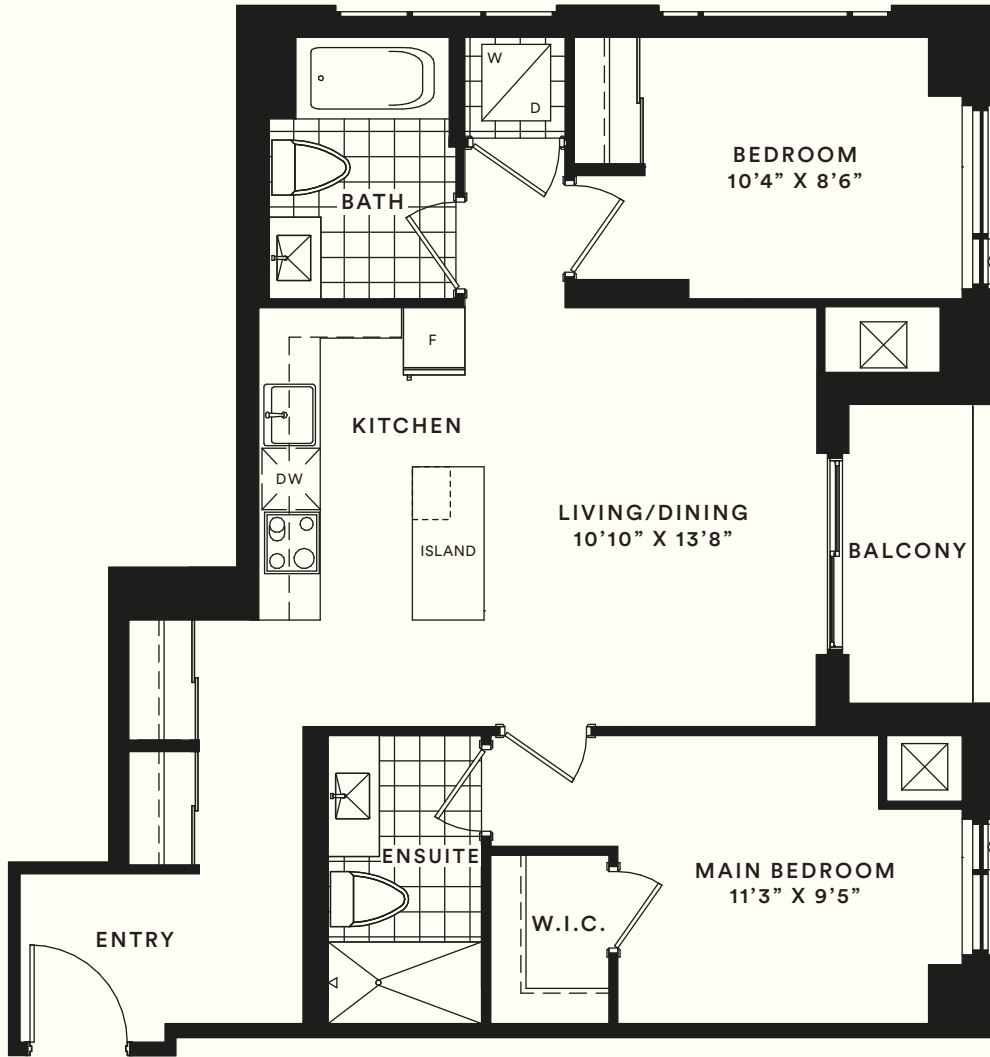
18A

TWO BEDROOM

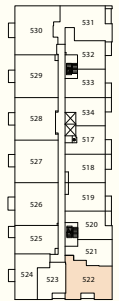
Suite area: 864 sq.ft.

Outdoor area: 40 sq.ft.

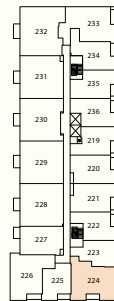
Total area: 904 sq.ft.



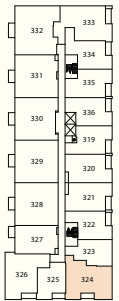
FLOOR 4



FLOOR 5



FLOOR 2



FLOOR 3



BEVERLEY GLEN BLVD.

BATHURST ST.

DANIELS & BAIF

BOULEVARD

— AT THE THORNHILL —

South Condominium

The Paige

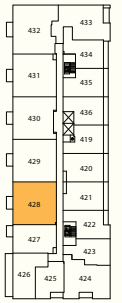
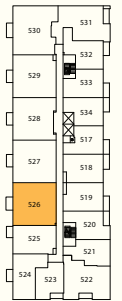
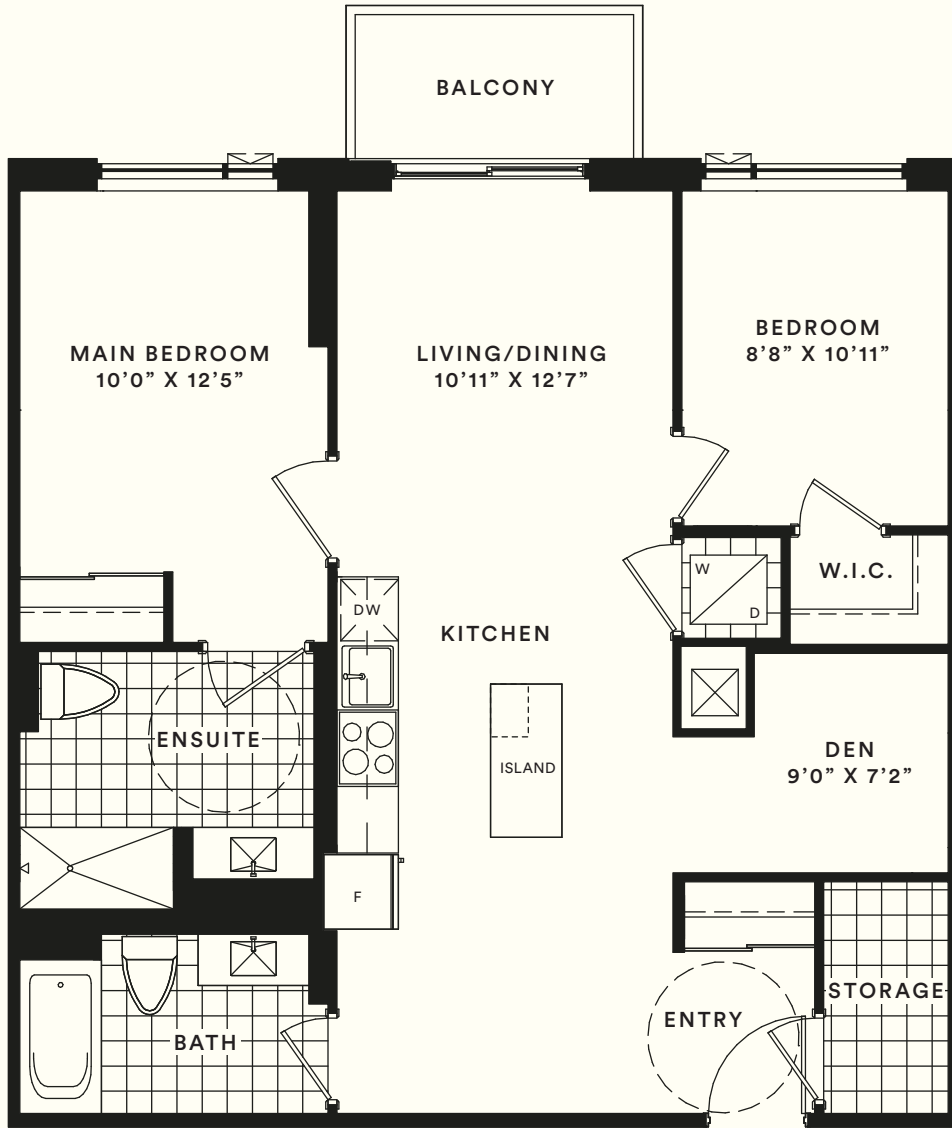
22A (BF)

TWO BEDROOM + DEN

Suite area: 978 sq.ft.

Outdoor area: 43 sq.ft.

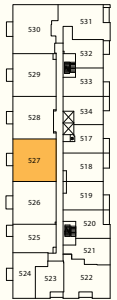
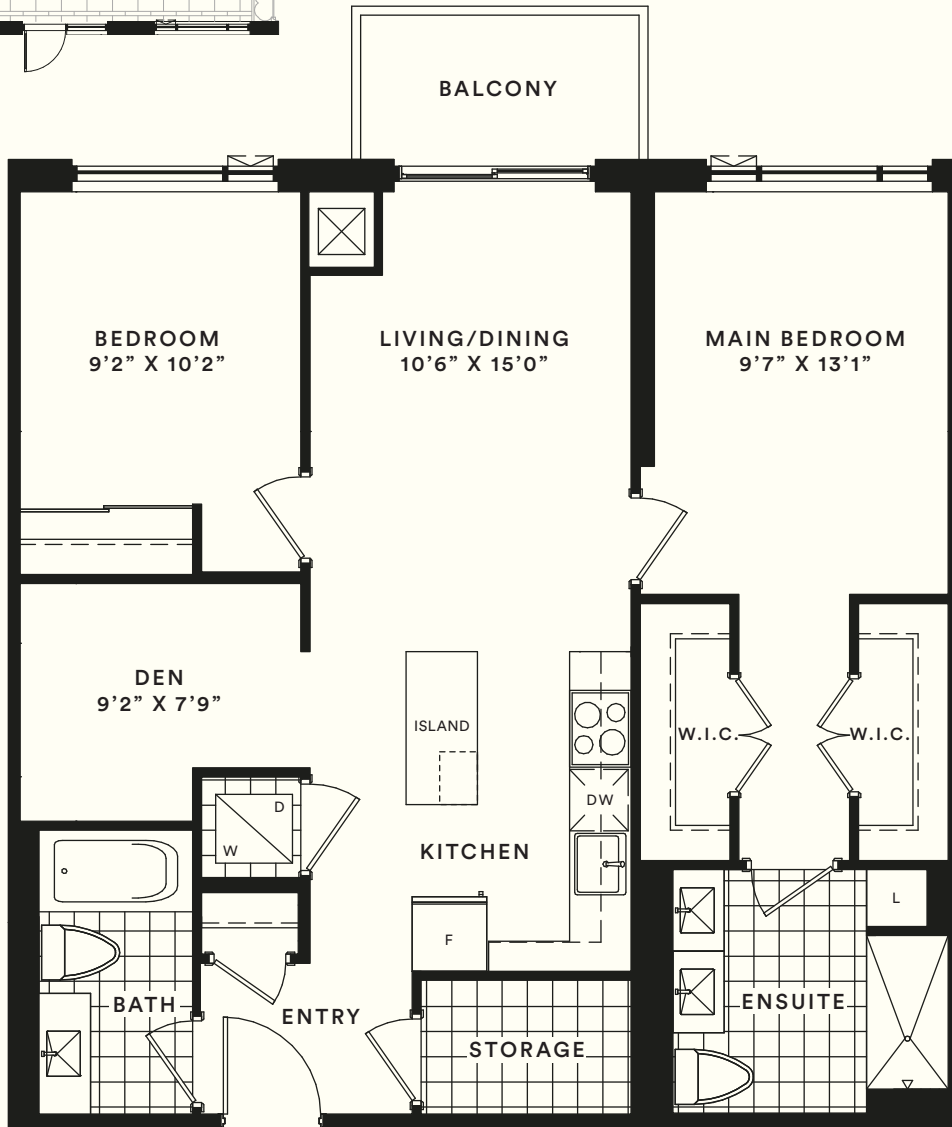
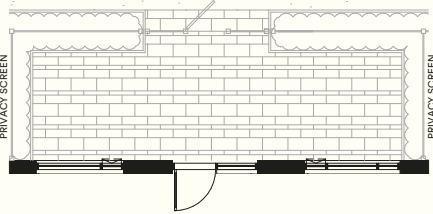
Total area: 1,021 sq.ft.



BEVERLEY GLEN BLVD.

BATHURST ST.

TERRACE (GROUND FLOOR ONLY)
 OUTDOOR AREA IS 251 SQ.FT.
 TOTAL AREA IS 1,230 SQ.FT.



FLOOR 5



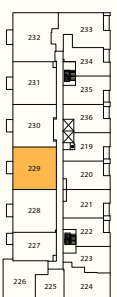
FLOOR 3



FLOOR 4



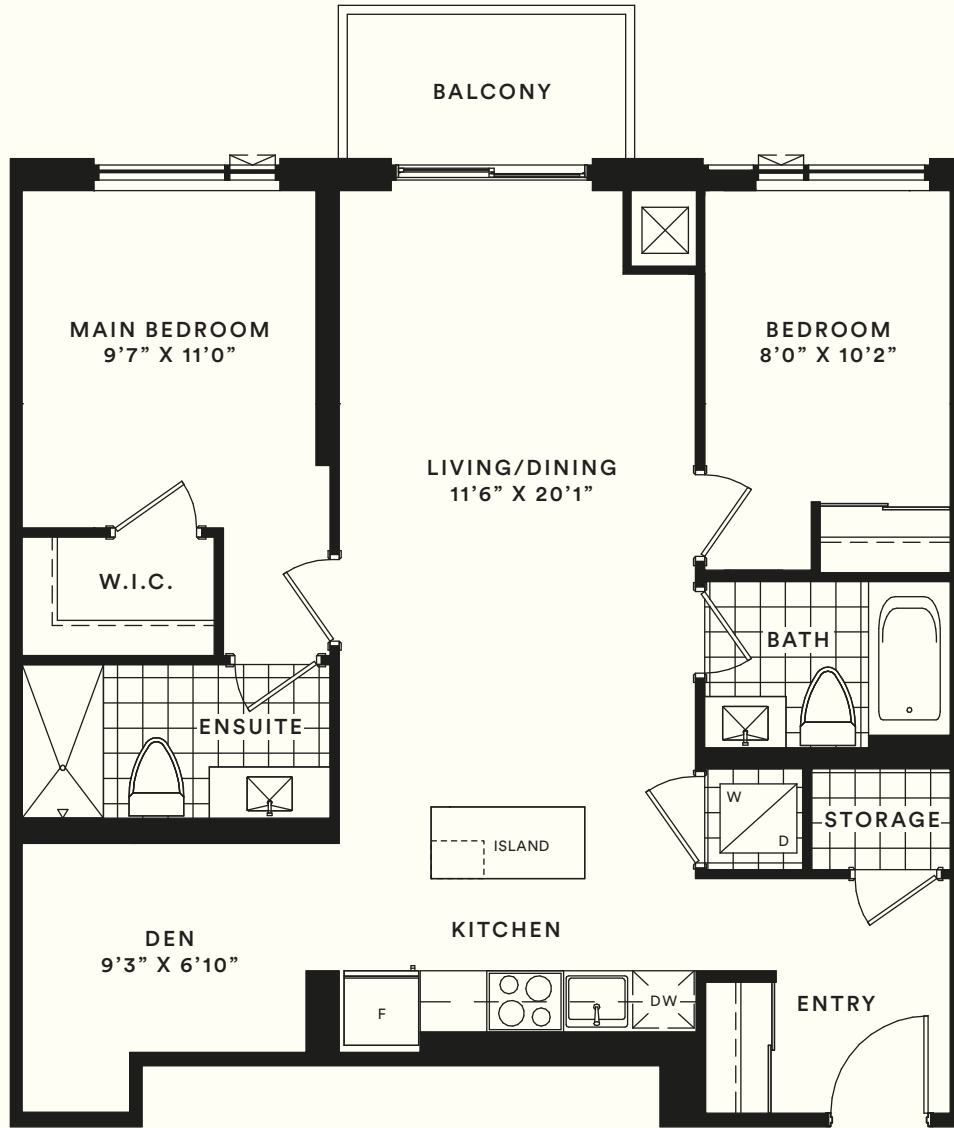
GROUND FLOOR



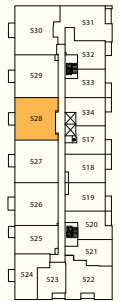
FLOOR 2

BEVERLY GLEN BLVD.

BATHURST ST.



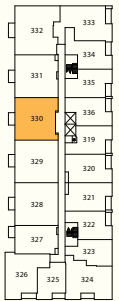
FLOOR 4



FLOOR 5



FLOOR 2

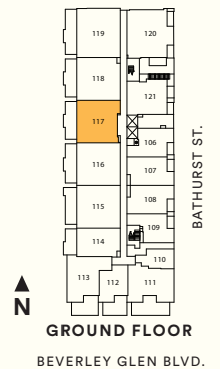
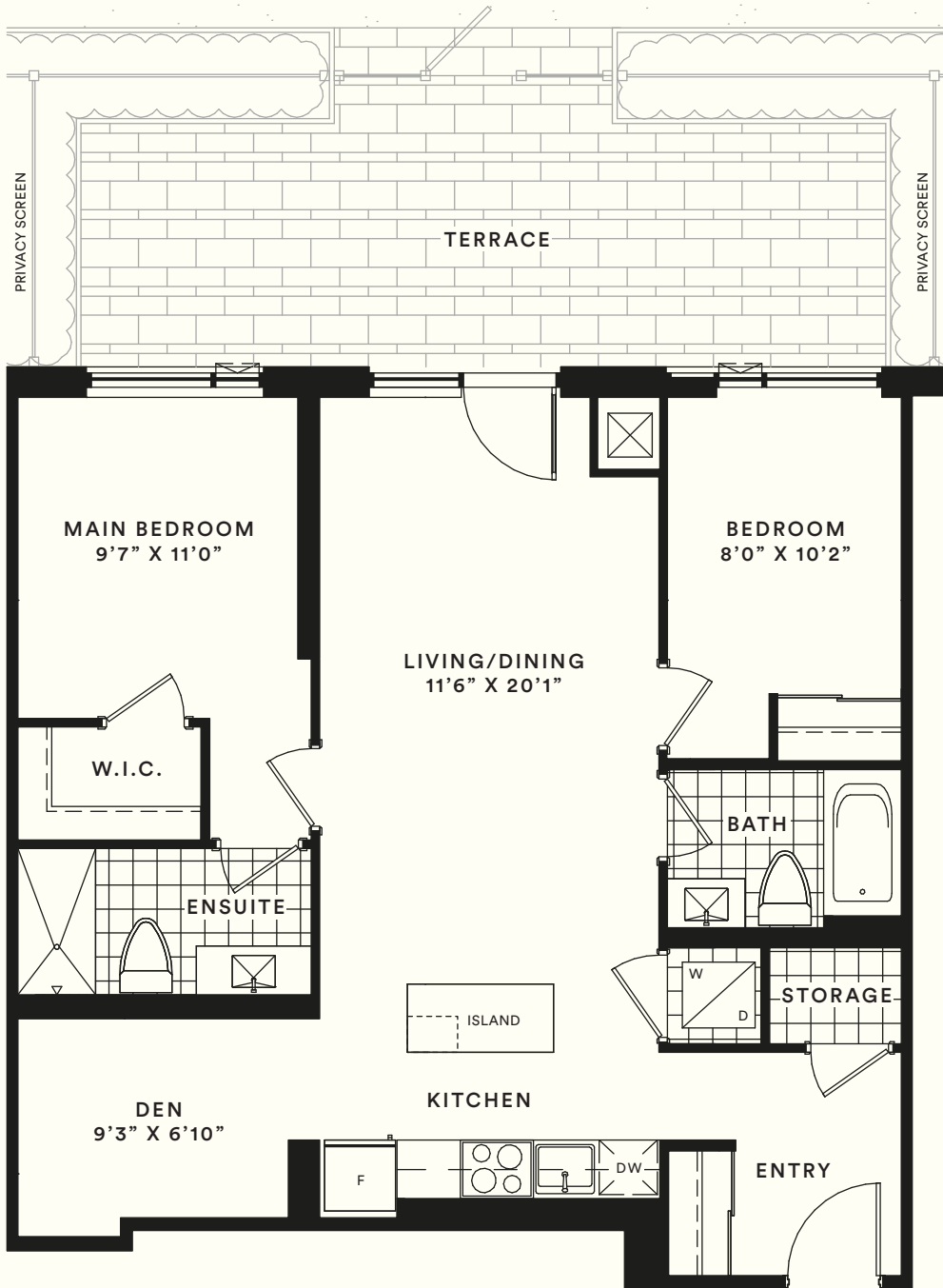


FLOOR 3

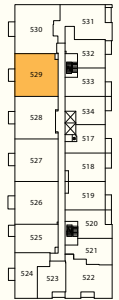
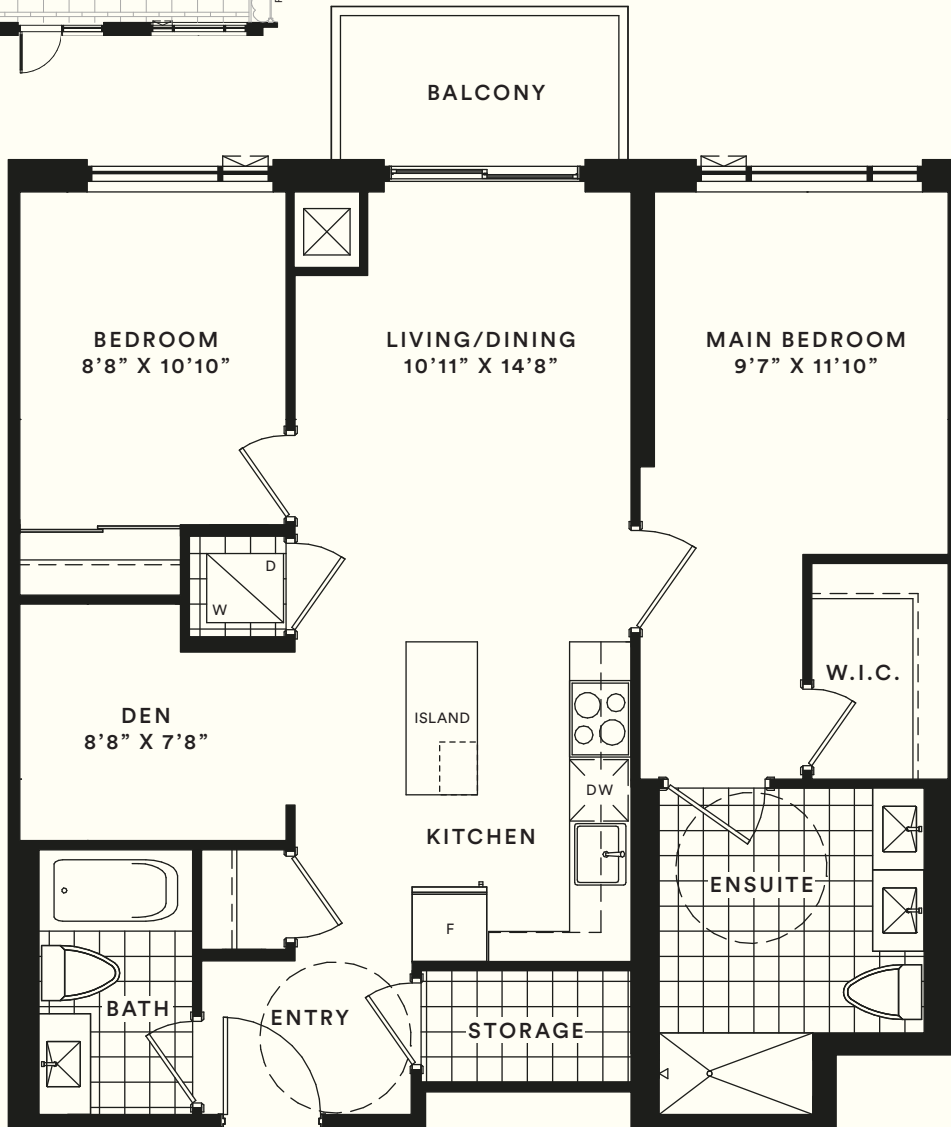
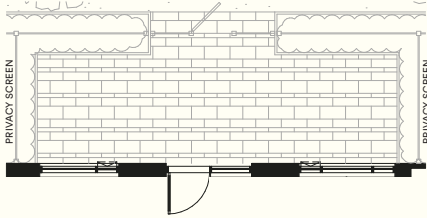


BEVERLEY GLEN BLVD.

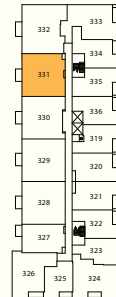
BATHURST ST.



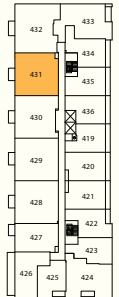
TERRACE (GROUND FLOOR ONLY)
 OUTDOOR AREA IS 243 SQ.FT.
 TOTAL AREA IS 1,206 SQ.FT.



FLOOR 5



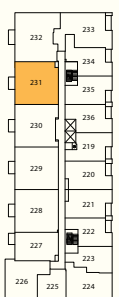
FLOOR 3



FLOOR 4



GROUND FLOOR



FLOOR 2

BEVERLY GLEN BLVD.

BATHURST ST.

BOULEVARD

— AT THE THORNHILL —

South Condominium

The Kaur

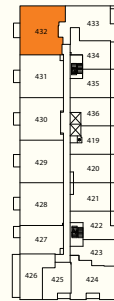
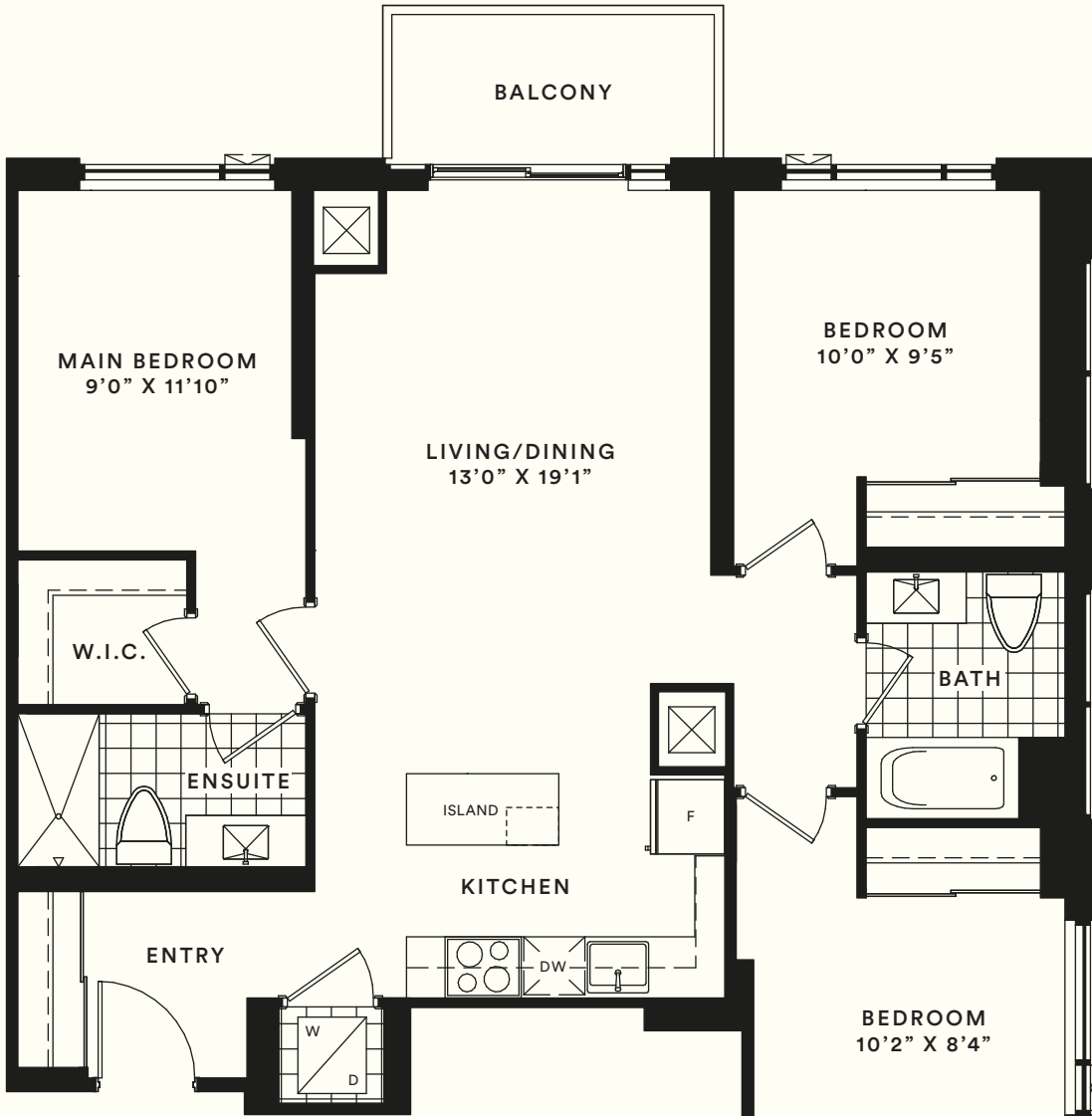
26A

THREE BEDROOM

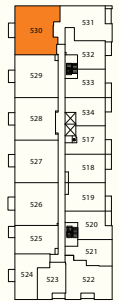
Suite area: 1,092 sq.ft.

Outdoor area: 51 sq.ft.

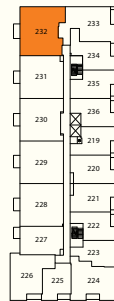
Total area: 1,143 sq.ft.



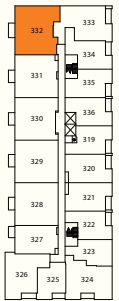
FLOOR 4



FLOOR 5



FLOOR 2



FLOOR 3



BEVERLEY GLEN BLVD.

BATHURST ST.

DANIELS & BAIF

BOULEVARD

— AT THE THORNHILL —

South Condominium

The Shields

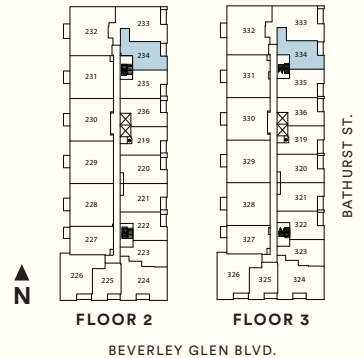
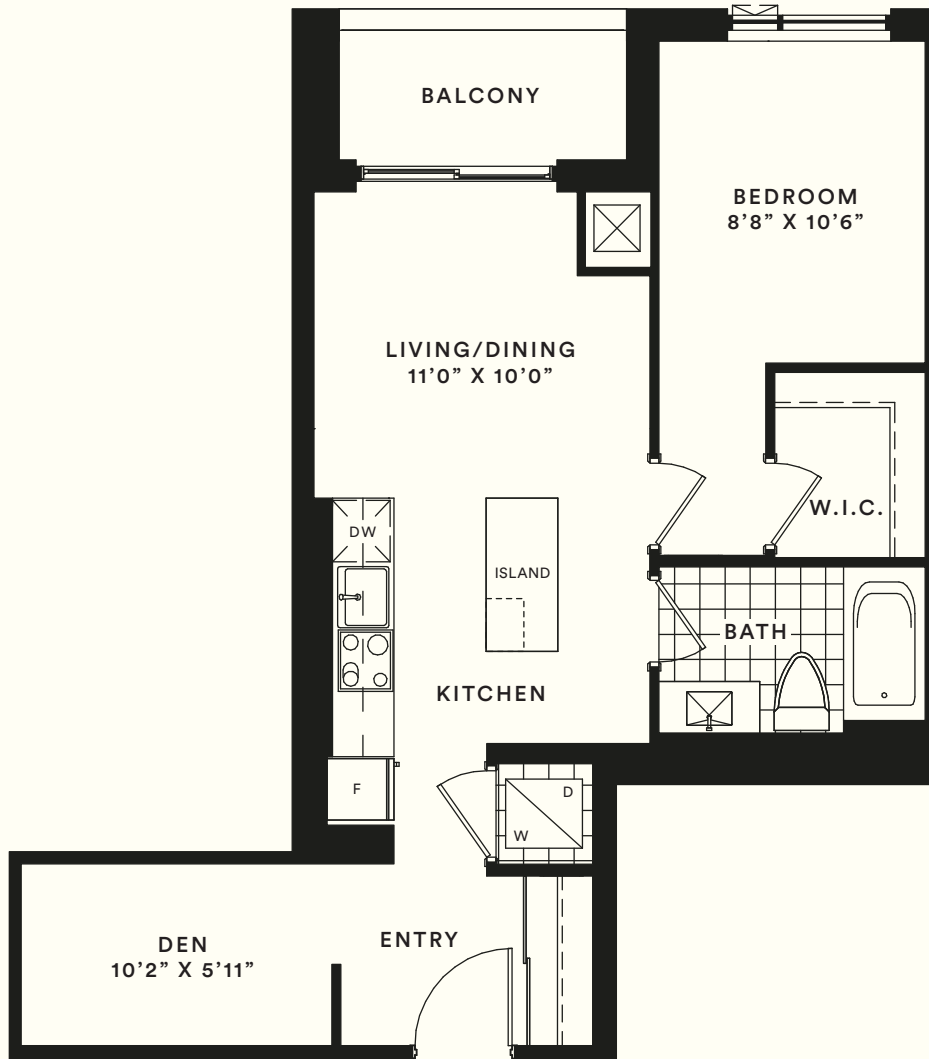
27A

ONE BEDROOM + DEN

Suite area: 630 sq.ft.

Outdoor area: 42 sq.ft.

Total area: 672 sq.ft.



DANIELS & BAIF

BOULEVARD

— AT THE THORNHILL —

South Condominium

The Serena

30A

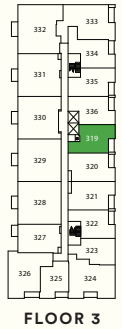
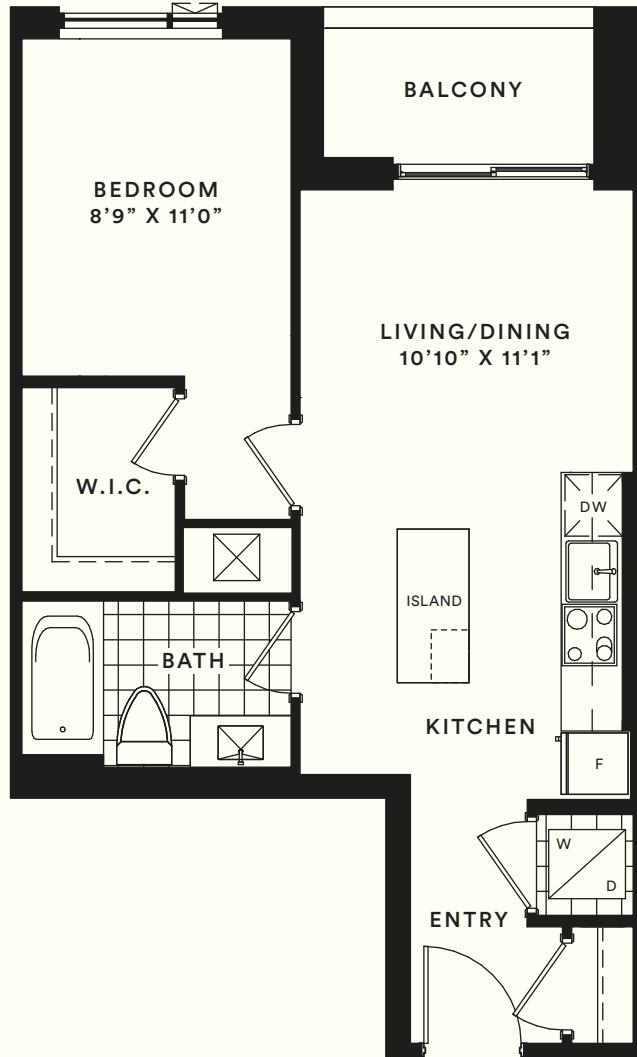
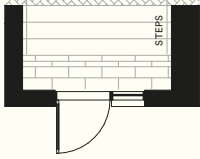
ONE BEDROOM

Suite area: 565 sq.ft.

Outdoor area: 38-45 sq.ft.

Total area: 603-610 sq.ft.

TERRACE (GROUND FLOOR ONLY)
OUTDOOR AREA IS 45 SQ.FT.
TOTAL AREA IS 610 SQ.FT.



BOULEVARD

— AT THE THORNHILL —

South Condominium

The Dallas

31A (BF)

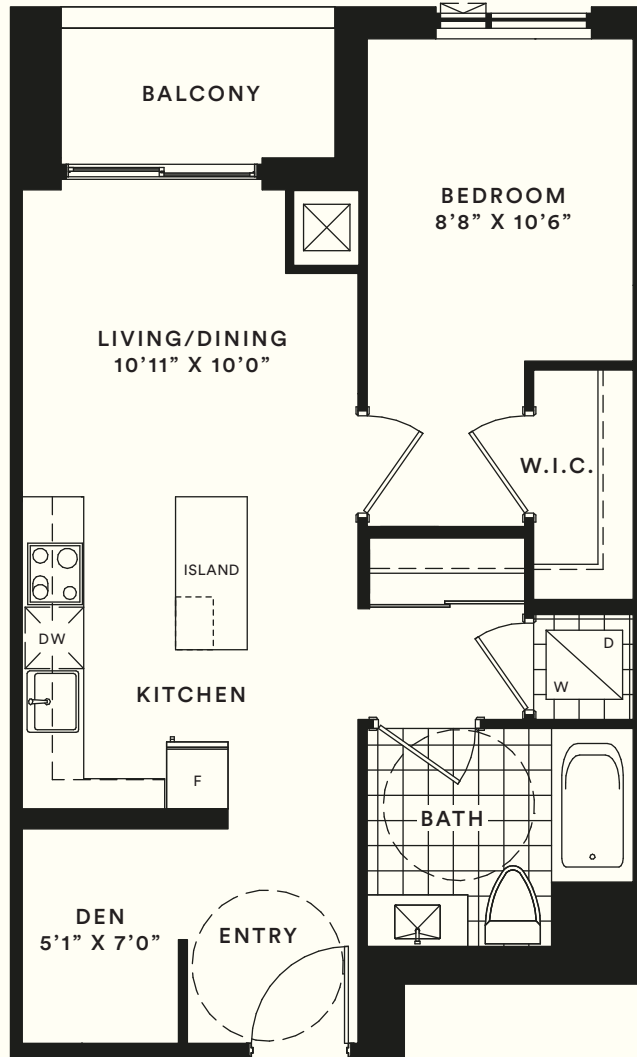
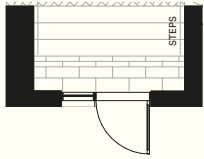
ONE BEDROOM + DEN

Suite area: 644 sq.ft.

Outdoor area: 39-46 sq.ft.

Total area: 683-690 sq.ft.

TERRACE (GROUND FLOOR ONLY)
 OUTDOOR AREA IS 46 SQ.FT.
 TOTAL AREA IS 690 SQ.FT.



BOULEVARD

— AT THE THORNHILL —

South Condominium

The Elliot

32A

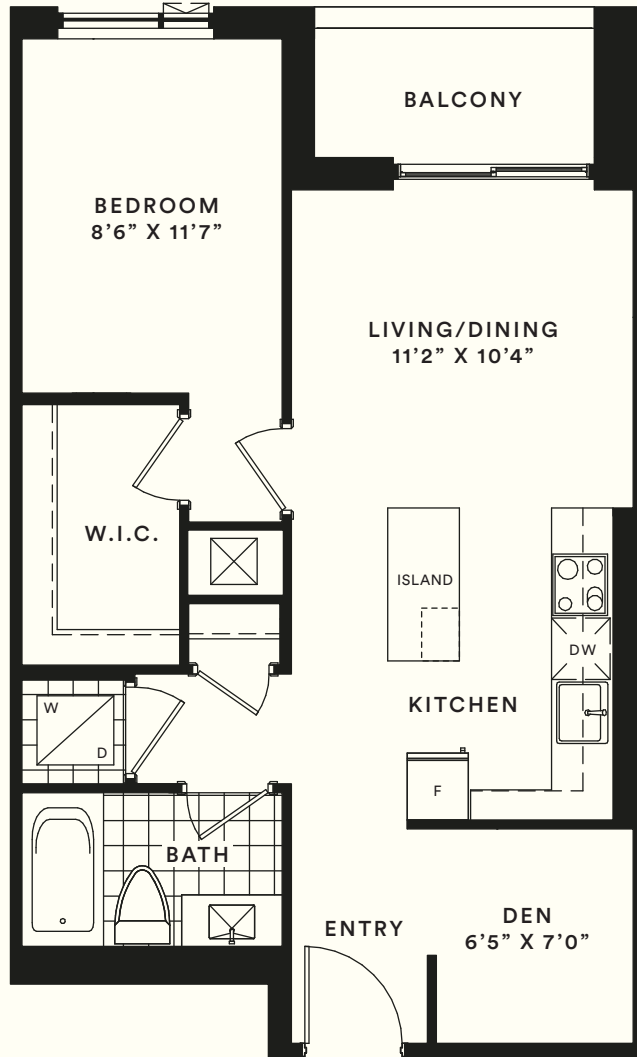
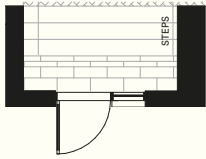
ONE BEDROOM + DEN

Suite area: 640 sq.ft.

Outdoor area: 40-47 sq.ft.

Total area: 680-687 sq.ft.

TERRACE (GROUND FLOOR ONLY)
OUTDOOR AREA IS 47 SQ.FT.
TOTAL AREA IS 687 SQ.FT.



DANIELS & BAIF

BOULEVARD

— AT THE THORNHILL —

South Condominium

The Campbell

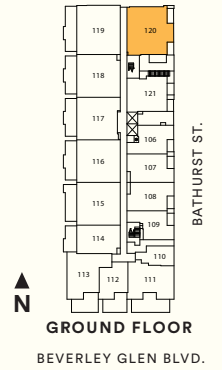
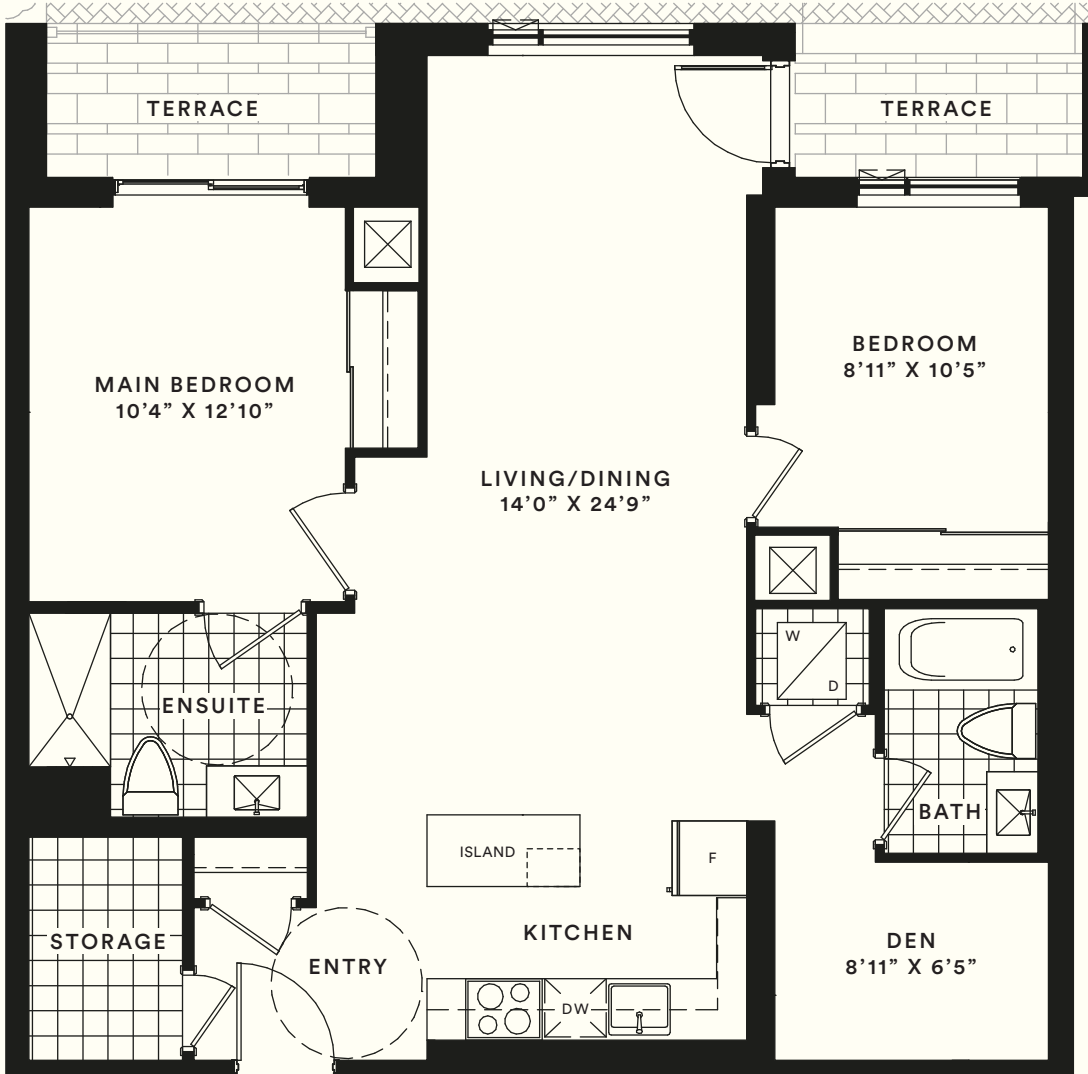
35T (BF)

TWO BEDROOM + DEN

Suite area: 1,108 sq.ft.

Outdoor area: 98 sq.ft.

Total area: 1,206 sq.ft.



DANIELS & BAIF

BOULEVARD

— AT THE THORNHILL —

South Condominium

The Livesay

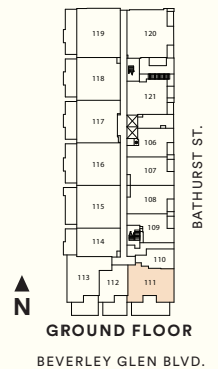
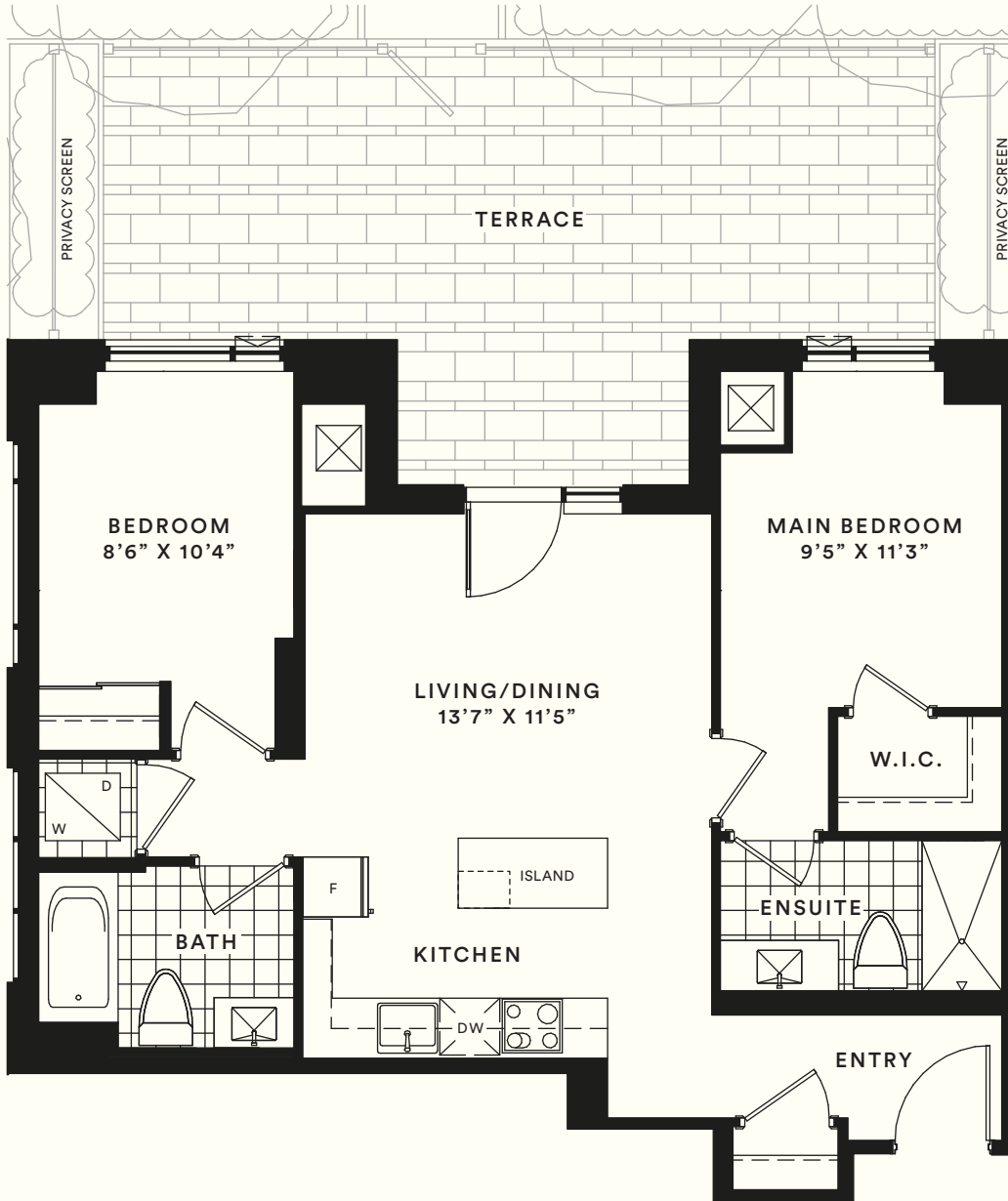
38T

TWO BEDROOM

Suite area: 823 sq.ft.

Outdoor area: 319 sq.ft.

Total area: 1,142 sq.ft.



**PARKING AVAILABLE
FOR ALL SUITES!**

DANIELS & BAIF

BOULEVARD

— AT THE THORNHILL —

A Master-Planned Community on Bathurst

APRIL SALES EVENT

IMPORTANT MESSAGE FROM DANIELS

The Boulevard at The Thornhill Sales Event will be a **remote** process, allowing you to select a suite and sign a purchase agreement from the comfort of your home.

With the Stay at Home order in effect, our Boulevard at The Thornhill Presentation Centre be open **BY VIRTUAL APPOINTMENT ONLY**. We will not be open to walk-in clients or in-person appointments.

SALE BEGINS Saturday, April 24, 2021 By Video Appointment

Client Information Package

Mortgage Commitment Requirement
Incentive Program
Extended Deposit Incentive
No Hidden Fees
Rogers Ignite™ Gigabit
What to Expect at our Remote Sale
Initial Deposit Cheque
Contact Information

For any further enquiries call 416.792.8800

THE MORTGAGE COMMITMENT REQUIREMENT

You will be asked to provide a [MORTGAGE COMMITMENT](#) that confirms you have been approved for the necessary funds to complete the closing of the home. **THE MORTGAGE COMMITMENT MUST BE IN AN AMOUNT THAT TOTALS THE PURCHASE PRICE OF THE UNIT, LESS THE DEPOSITS.**

ALL MORTGAGE COMMITMENTS MUST INCLUDE THE FOLLOWING INFORMATION:

➤ **PROPERTY ADDRESS:** 8 BEVERLEY GLEN BLVD., UNIT _____, THORNHILL, ON

This letter will confirm that you qualify for a residential mortgage with the _____ (lender's name) with the following terms and conditions:

➤ **SUITE No.:** _____ **LEGAL UNIT No.:** _____ **LEGAL LEVEL:** _____

➤ **APPLICANT NAME:** _____

➤ **PLEASE NOTE THAT THE PURCHASER NAME(S) MUST BE THE SAME AS SHOWN ON THE AGREEMENT OF PURCHASE AND SALE**

➤ **MORTGAGE COMMITMENT PRINCIPAL AMOUNT:** PURCHASE PRICE MINUS 20% DEPOSIT = _____

THE MORTGAGE COMMITMENT AMOUNT AND THE 20% DEPOSIT MUST ADD UP TO AT LEAST THE PURCHASE PRICE OF THE UNIT

FOR ANY PURCHASER WHO WILL HAVE A LOWER MORTGAGE AMOUNT AS THEY WILL BE PROVIDING ADDITIONAL DEPOSIT MONIES ON FINAL CLOSING, THE PURCHASER MUST PROVIDE VERIFICATION OF THE FUNDS TO COMPLETE THE PURCHASE.

THIS CAN BE IN THE FORM OF COPIES OF THE PURCHASER'S BANK ACCOUNT STATEMENTS FROM A CANADIAN CHARTERED BANK, TRUST COMPANY OR CREDIT UNION AND / OR THE PURCHASER'S INVESTMENT PORTFOLIO STATEMENTS FROM A CANADIAN SECURITIES DEALER, WHICH DEMONSTRATE THAT THE PURCHASER HAS THE FUNDS AVAILABLE ON DEPOSIT, OR IN LIQUID INVESTMENTS, TO PAY THE TOTAL PURCHASE PRICE. ALTERNATIVELY, A LETTER CAN BE PROVIDED FROM THE ABOVE MENTIONED FINANCIAL INSTITUTIONS.

➤ **FIXED ANNUAL INTEREST RATE:** (e.g. 3.5% per annum)

PREPAYMENT OPTION: _____ **Closed to prepayment**

➤ **TERMS OF MORTGAGE:** 5 YEARS

AMORTIZATION: _____ **30 YEARS**

APPROVAL CONFIRMATION IS VALID

➤ **UNTIL ANTICIPATED CLOSING DATE:** _____ **January 2024**

➤ **NAME, SIGNATURE AND CONTACT INFORMATION OF BANK ORGANIZATION PROVIDING MORTGAGE APPROVAL:**

NAME	BANK
PHONE NUMBER / EMAIL ADDRESS	

PLEASE NOTE THAT WE DO NOT ACCEPT MORTGAGE PRE-APPROVALS. IF YOUR MORTGAGE LENDER CANNOT PROVIDE A MORTGAGE APPROVAL, PLEASE DO NOT HESITATE TO CONTACT OUR RBC REPRESENTATIVES, AS THEY WILL PROVIDE MORTGAGE COMMITMENTS FOR OUR QUALIFIED BUYERS. THE MORTGAGE COMMITMENT MUST BE FROM THE LENDER, LETTERS FROM A MORTGAGE BROKER DO NOT FULFILL OUR REQUIREMENT.

INCENTIVE PROGRAM

ONE PARKING UNIT

+

ONE LOCKER UNIT**

AVAILABLE FOR ONLY

\$42,800

Suites that have an ensuite storage room
are not eligible for a locker & will be offered:

ONE PARKING FOR ONLY

\$40,800***

FREE ASSIGNMENT

The Assignment Fee of **\$5,000** plus applicable taxes will be
waived.

The Purchaser will be required to pay the Vendor's legal fee of \$950 plus applicable taxes.

*Valid for purchases made Saturday April 24, 2021 – Monday April 26, 2021 ONLY.

**Locker is either Full-Height or Half-Height Based on Suite Type, see a Sales Representative for details.

***Locker is not available for The Armstrong, The Campbell, The Dannie, The Fairley, The Leonard, The Martin, The Paige, The Rothstein, The Summit Ridge, The Thomson models.

See Sales Representative for full details. Prices, specifications, incentives and programs are subject to change without notice.
E & O. E.

EXTENDED DEPOSIT STRUCTURE INCENTIVE

20% EXTENDED DEPOSIT STRUCTURE

Initial deposit of **\$7,000**** upon signing the Agreement of Purchase and Sale

The balance to **5%** in **30** days from signing

1% in **90** days from signing

1% in **120** days from signing

1% in **150** days from signing

1% in **180** days from signing

1% in **210** days from signing

5% in **400** days from signing

5% on Occupancy

*Not available for second purchase within the condominium project or second purchase within the same household. Limited time offer. Not available for Non-Canadian Residents. Vendor has the right to change without notice.

**Deposit cheques made payable to Brattys LLP in Trust.

Valid for purchases made Saturday April 24, 2021 – Monday April 26, 2021.

NO SURPRISES – NO HIDDEN FEES*

ALL SALES QUALIFY FOR OUR NO HIDDEN COST PROGRAM

BOULEVARD AT THE THORNHILL No Hidden Cost program ensures that there are no surprises at closing.

We spell out the additional costs in the Agreement of Purchase and Sale and we cap those closing costs.

We make it simple and we save you money on closing.

The following Fees and Charges are **INCLUDED** in the program:

Utility Connection Fees

Transaction Levy Fees

Status Certificate

Development and Levy Charges

Cost of Registering Documents

Electronic Registration Fee

Wire Transfer Fee

Deposit Administration Fee

ALL ONE BEDROOM + DEN & SMALLER **\$7,500 plus HST***

ALL TWO BEDROOM & LARGER **\$10,000 plus HST***

*Does not include the Tarion Enrolment Fee, HCRA fee, initial reserve fund contribution and realty taxes.

ROGERS IGNITE INTERNET™ GIGABIT

INCLUDED IN SUITE MAINTENANCE FEES



WiFi you can count on.

Your Condo Developer and Rogers have partnered to provide you with exclusive pricing and special rates.



Ignite Internet™ Gigabit

with download speeds up to 1 Gbps¹ and unlimited usage.

How fast can you go with Gigabit Speeds?



1 second

to download the latest hit album²



5 seconds

to download 250 photos²



30 seconds

to download a HD movie²

Plus, add Ignite TV and get 25% off /mo*



Ignite TV™

Our next generation TV service puts you in control of your entertainment experience. Revolutionary features like All-in-one Search and Voice Remote will change the way you watch TV. Includes free installation.

Ask about our other special offers



Ignite Home Phone™

Take advantage of a convenient central number for the whole household with unlimited Canada-wide calling plus 7 features included.³

ROGERS.
 Make more possible.™

Offer available for a limited time to new and existing customers within Rogers cable service area (where technology permits). Subject to change without notice. Taxes extra. Data usage subject to Rogers Terms of Service and Acceptable Use Policy. See www.rogers.com/terms for full details. Rogers reserves the right to remove bundle benefits if services are changed or cancelled resulting in you no longer being eligible. Offer end dates vary by address, occupancy date and are subject to board approval. *You are receiving a special rate for this service under a bulk arrangement between Rogers and your building. If the bulk arrangement ends, this service will be cancelled. At that time, you may choose to subscribe to services with Rogers at then current rates, subject to any applicable rate increases. Discount applies to monthly service fee for core services only. Additional optional add-ons and pay-per-use rates are not included with the offer. Discounted price per month for the duration of the bulk arrangement or until otherwise notified for Popular or Premier packages is \$56.24 and \$75.00 respectively. ¹ Speeds may vary with internet traffic, server gateway/router, computer (quality, location in home, software and applications installed), home wiring, home network or other factors. An Ethernet/Wired connection and at least one additional wired or wireless connection are required to reach maximum download speeds of up to 1Gbps for Ignite Internet Gigabit. See Acceptable Use Policy at rogers.com/terms. ² The times and usage amounts specified are approximations based on maximum theoretical speeds and file size estimates and will vary depending on size and quality of content. ³ Available for calls to Canada only. Plan intended for direct dialed conversations/voice messages only, based on a total of 44,640 minutes/mo. Chat lines, data, fax and/or long distance calls made using call forwarding and three-way calling features are prohibited. One-time Ignite Home Phone installation fee of \$49.99 will apply if the service is installed separately at a later date. Existing Rogers Home Phone customers who subscribe to a Rogers Ignite bundle must switch to the Ignite Home Phone service (activation optional) and existing home phone service will no longer be available. Certain features not available with Ignite Home Phone service, including TV call display, distinctive ring, battery back-up, auto connect, foreign exchanges and multiple lines. In the event of a power or network outage/disconnection, you will not be able to make any voice calls, including Emergency 9-1-1 calls with your Ignite Home Phone service. TM Trademarks or used under license from Rogers Communications Inc. or an affiliate. ©2021

Ignite Internet™ Gigabit special pricing of \$32/month is included in suite maintenance fees. This special flat rate pricing is available for a period of 6 years. Cable and/or phone services are not included.

WHAT TO EXPECT AT OUR REMOTE SALE

Your Real Estate agent calls you to tell you that you have been allocated a suite.

What is next?

1. We will set up a video call appointment with you and your Real Estate Agent. Appointments will be scheduled beginning Saturday, April 24.
2. We will require an image of a valid piece of photo identification. A driver's license, Ontario photo ID card, permanent resident card or passport is acceptable if it **has not expired**. If you submit a driver's license, or Ontario photo ID card **the address must be your current place of residence** to be considered valid. Please speak to a Sales Representative if this does not apply to you.
3. To prepare for the video appointment please have your photo ID ready as well as your cheque book.
4. Your video appointment will be with a Daniels Representative. Please allow 30 to 45 minutes for the appointment.
5. During the video call we will verify your identity, we will prepare and review the Agreement of Purchase and Sale, ask that you prepare the initial deposit cheque, and go over the next steps including the Docu-Sign process, our financial requirements and providing deposit cheques. We will also ask if you consent to share your Agreement with your Real Estate Agent.
6. You will receive your Agreement of Purchase and Sale via Docu-Sign shortly after your appointment.
7. You will be required to sign the Agreement of Purchase and Sale as soon as you receive the link.
8. There is a 24hr deadline to provide the initial deposit cheque to the sales office. A cheque drop off box will be available in the Presentation Centre vestibule. Please see the following page for additional instructions.
9. Once our team at the presentation centre confirms receipt of your initial deposit cheque, we will authorize the agreement provided there are no issues.
10. Upon authorizing the Agreement of Purchase and Sale, your 10-day rescission expiry period will begin.
11. You will receive a link to the authorized Agreement. Please download all files contained in the link.

For any questions or concerns call 416.792.8800

INITIAL DEPOSIT CHEQUE

Congratulations! You have signed your Agreement of Purchase and Sale via Docu-Sign.

The next step is to provide the initial deposit cheque within the next 24-hours. Please refer to the Contact Info sheet for presentation centre hours and cheque drop off procedure.

We will accept personal cheques.

We will not accept a cheque that is in your Real Estate Agents name.

To limit physical contact, a cheque drop-off box will be located just inside the entrance to the presentation centre.

Envelopes and sanitized pens will be provided.

The envelopes will have a few questions written on them that we kindly ask you to answer:

1. Suite number
2. Is the person dropping off the cheque the Purchaser or the Real Estate Agent or Other?
3. If Other, please include name, contact info and relationship to the Purchaser.

If you used a pen that was provided, we ask that you place it in the used container once you have finished answering the questions on the envelope.

To help prevent any necessary corrections please ensure the following:

The cheque is made payable to Brattys LLP in Trust

The cheque is dated

Add *Boulevard* + Building C or D & your Suite # on the memo line

Sign the cheque

For any questions or concerns call 416.792.8800

REMOTE SALES EVENT

Boulevard at The Thornhill Presentation Centre

8020 Bathurst Street, Unit 4A, Thornhill

Open for Virtual Appointments ONLY

To comply with stay at home orders, the Presentation Centre is closed to walk-in clients



DEPOSIT CHEQUE DROP OFF HOURS Presentation Centre Vestibule ONLY

We have an important role to play in providing a safe environment for our staff, our clients and our community. In light of the ongoing COVID-19 pandemic, we have made the following adjustments at our presentation centre to ensure business continuity and to provide the safest and best service to our clients during this time.

- To practice safe physical distancing, we are limiting the number of people permitted in the presentation centre vestibule at one time.
- We have increased the frequency of our office cleaning schedule.
- We will ask that you wear a face mask for your cheque drop off in the presentation centre.

April 14 – May 6, 2021

Monday: Noon – 6pm

Tuesday: Noon – 6pm

Wednesday: Noon – 8pm

Thursday: Noon – 6pm

Friday: Noon – 5pm

Saturday: Noon – 5pm

Sunday: Noon – 5pm

For any further enquiries call 416.792.8800