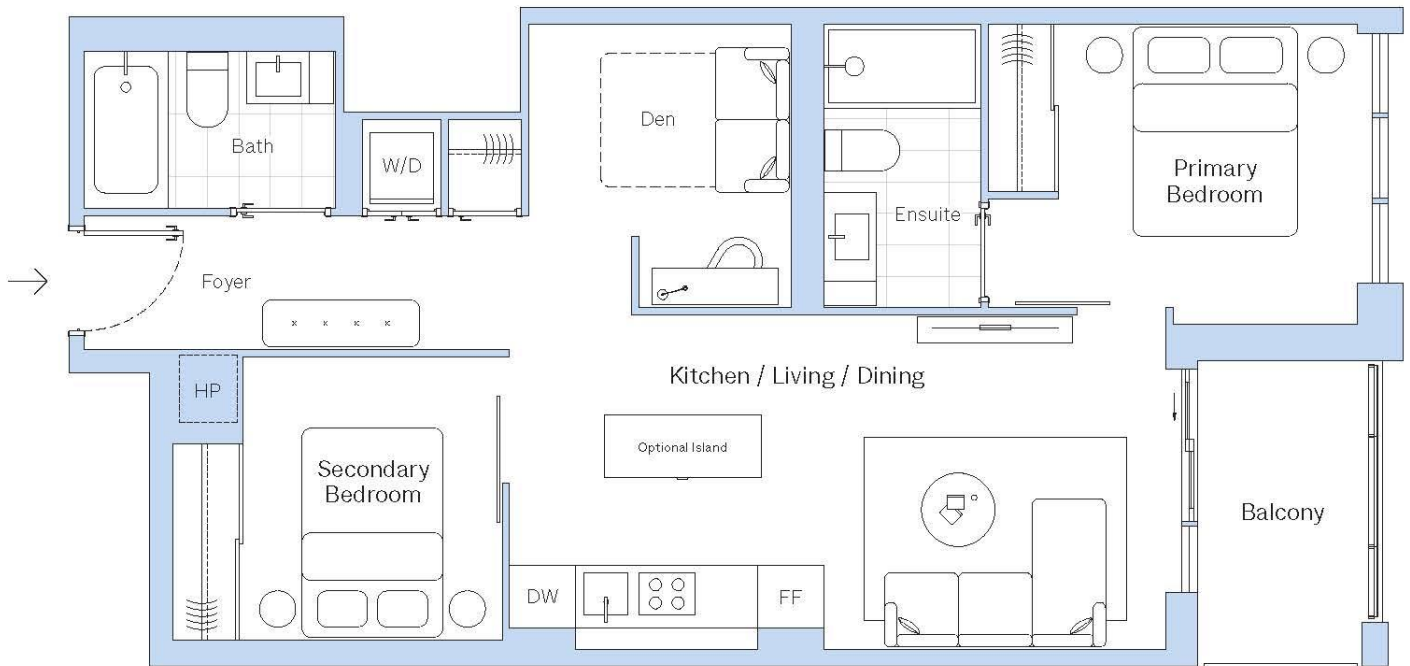




P-2D2-A

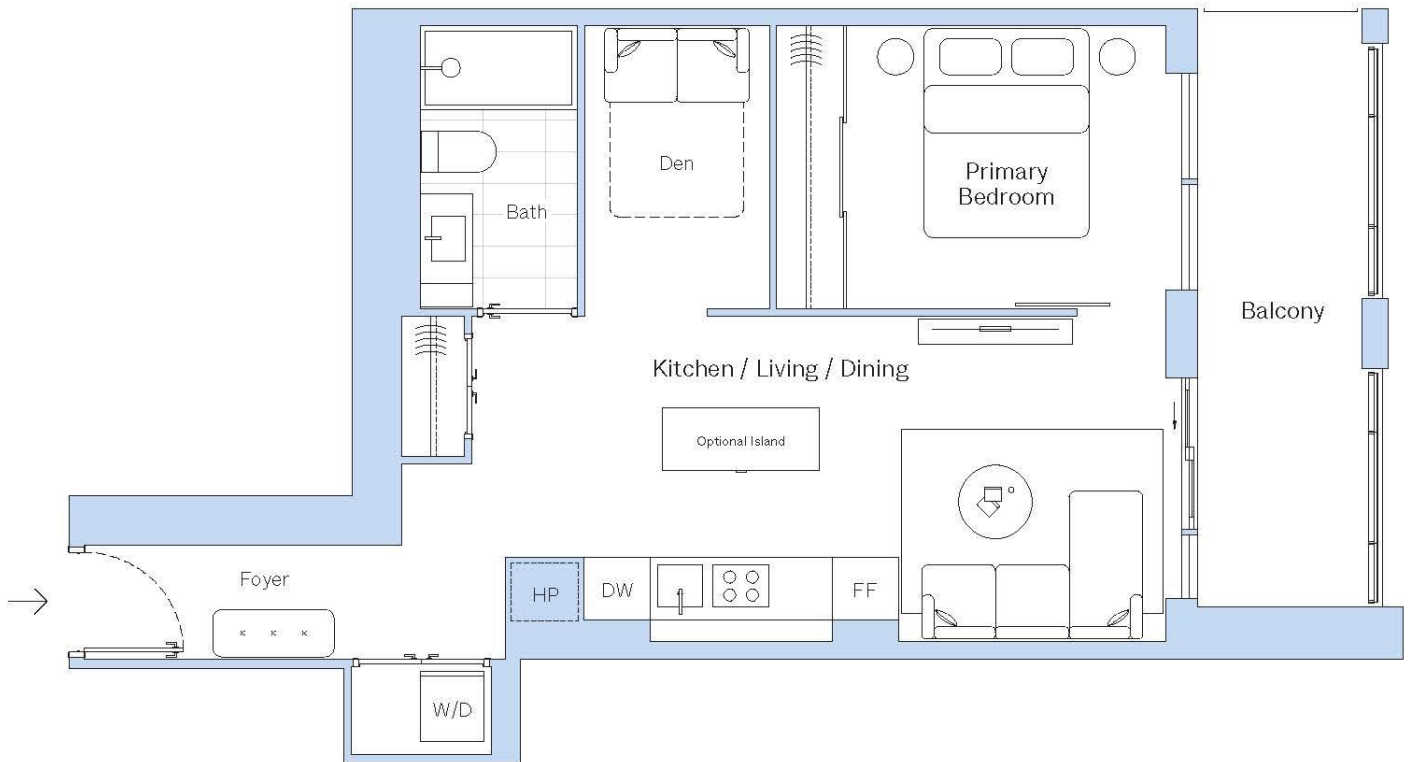
2 Bedrooms, 1 Den, 2 Bathrooms, Balcony



TOTAL	FT ²	M ²	ORIENTATION	NORTH
Interior	807 ft ²	75 m ²		
Exterior	60 ft ²	6 m ²		
Total	867 ft ²	81 m ²		
DIMENSIONS	FT	M	FLOORS	
Kitchen / Living / Dining	21' 5" x 10' 8"	6.52 m x 3.24 m	3 - 6	
Primary Bedroom	12' 3" x 9' 7"	3.73 m x 2.91 m		
Secondary Bedroom	8' 3" x 9' 0"	2.52 m x 2.74 m		
Den	8' 4" x 9' 0"	2.55 m x 2.74 m		

P-1D1-A

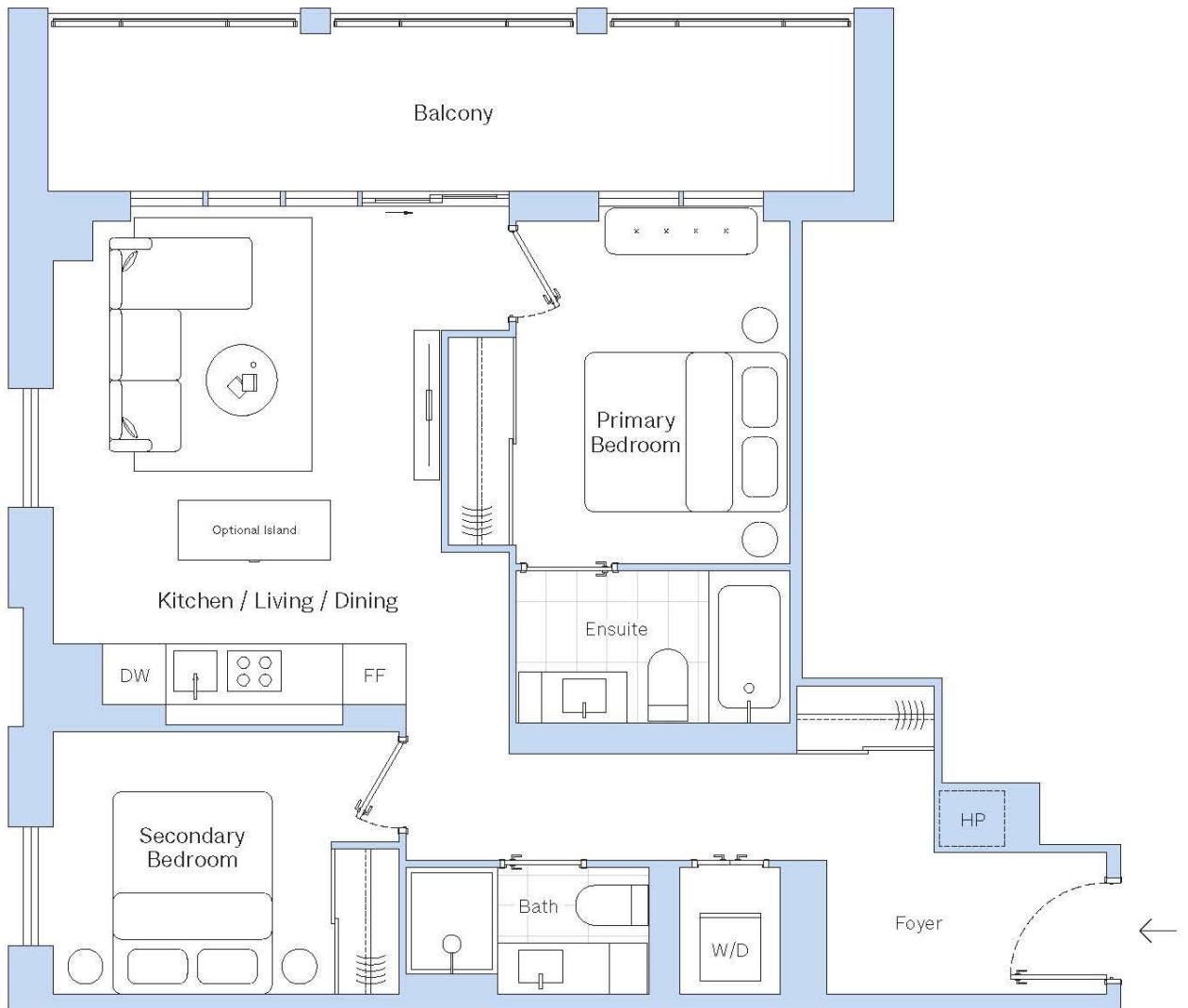
1 Bedroom, 1 Den, 1 Bathroom, Balcony



TOTAL	FT ²	M ²	ORIENTATION	NORTH
Interior	635 ft ²	59 m ²		
Exterior	116 ft ²	11 m ²		
Total	751 ft ²	70 m ²		
DIMENSIONS	FT	M	FLOORS	
Kitchen / Living / Dining	19' 0" x 10' 4"	5.80 m x 3.15 m	3 - 6	
Primary Bedroom	10' 8" x 9' 0"	3.25 m x 2.74 m		
Den	5' 11" x 9' 0"	1.79 m x 2.74 m		

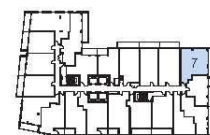
P-2N2-A

2 Bedrooms, 2 Bathrooms, Balcony



TOTAL	FT ²	M ²
Interior	798 ft ²	74 m ²
Exterior	168 ft ²	16 m ²
Total	966 ft ²	90 m ²

ORIENTATION NORTH



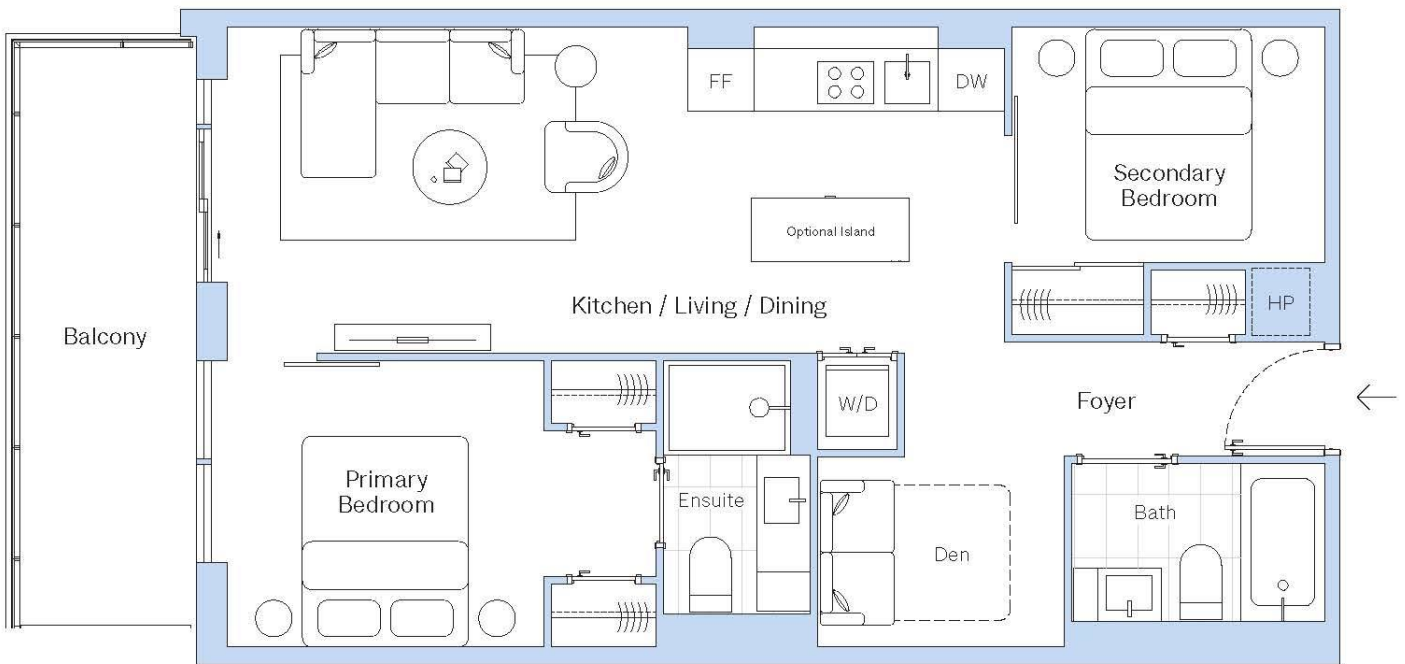
DIMENSIONS	FT	M
Kitchen / Living / Dining	13' 13" x 16' 5"	4.05 m x 5.00 m
Primary Bedroom	9' 0" x 11' 10"	2.74 m x 3.59 m
Secondary Bedroom	9' 8" x 8' 8"	2.94 m x 2.63 m

FLOORS

3 - 6

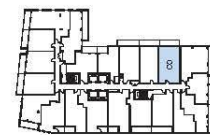
P-2D2-B

2 Bedrooms, 1 Den, 2 Bathrooms, Balcony



TOTAL	FT ²	M ²
Interior	762 ft ²	71 m ²
Exterior	115 ft ²	11 m ²
Total	877 ft ²	82 m ²

ORIENTATION NORTH



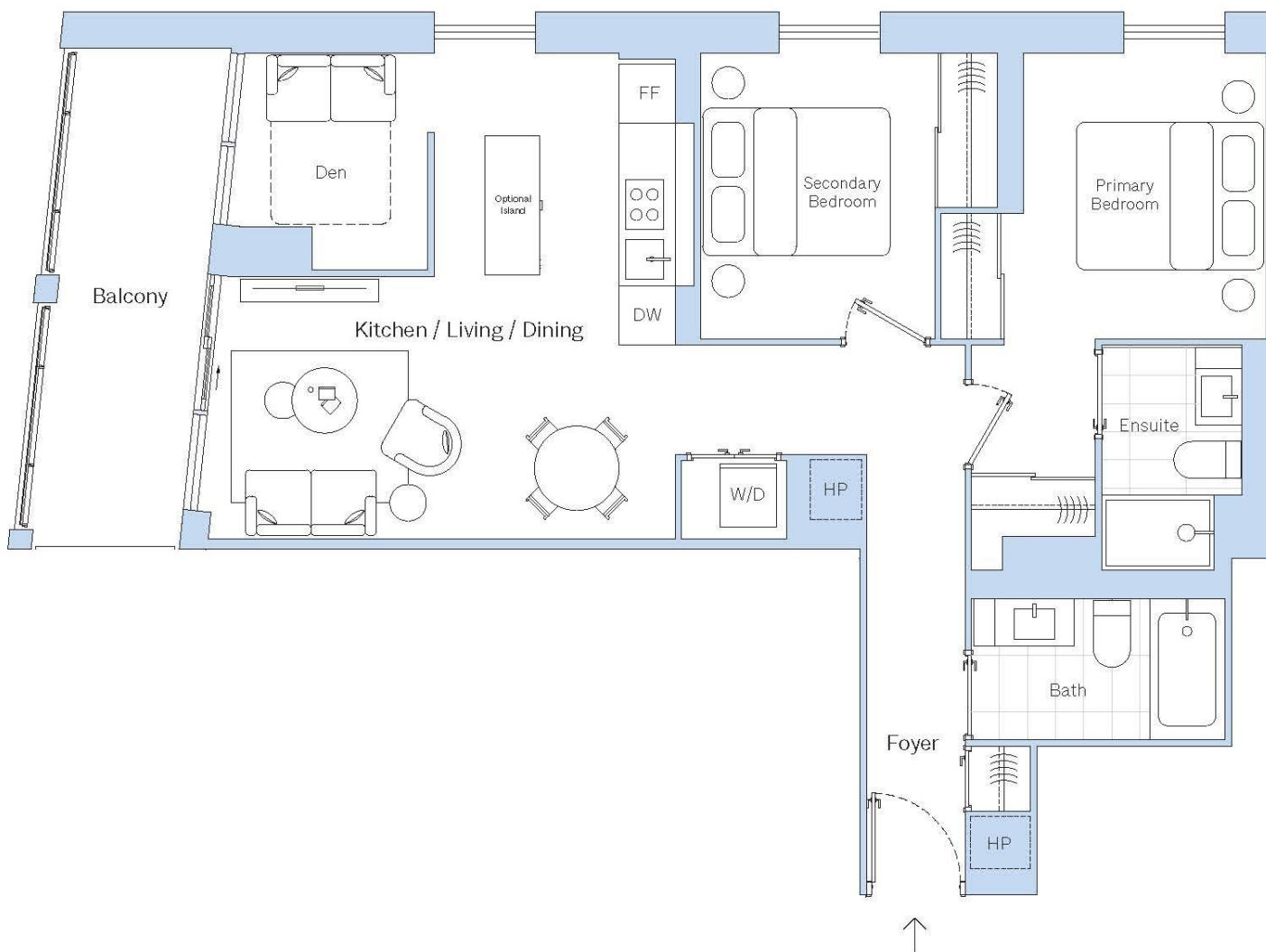
DIMENSIONS	FT	M
Kitchen / Living / Dining	25' 1" x 10' 4"	7.63 m x 3.14 m
Primary Bedroom	10' 6" x 9' 1"	3.20 m x 2.76 m
Secondary Bedroom	9' 11" x 7' 5"	3.02 m x 2.27 m
Den	7' 10" x 6' 0"	2.38 m x 1.83 m

FLOORS

3 - 6

P-2D2-C

2 Bedrooms, 1 Den, 2 Bathrooms, Balcony



TOTAL	FT ²	M ²
Interior	852 ft ²	79 m ²
Exterior	103 ft ²	10 m ²
Total	955 ft ²	89 m ²

ORIENTATION NORTH



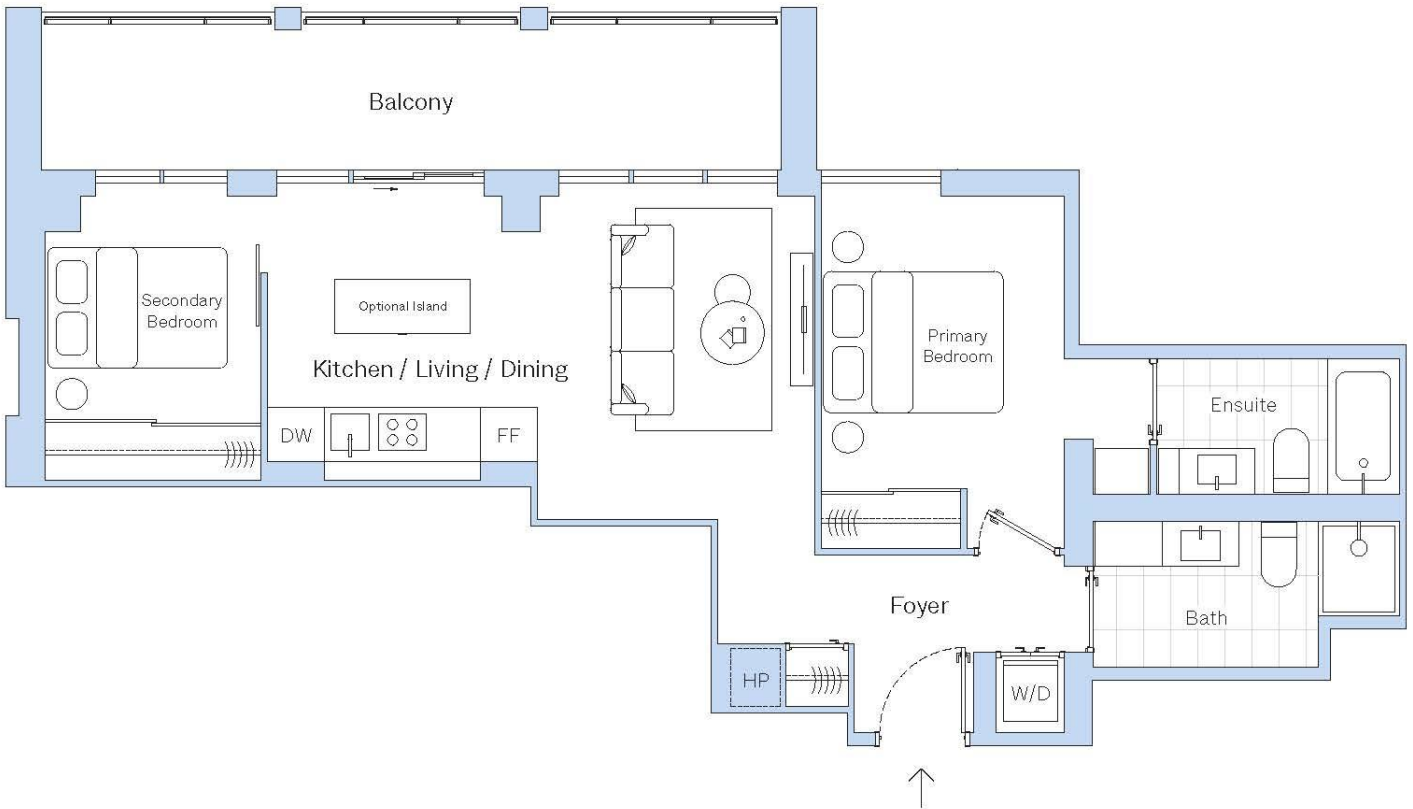
DIMENSIONS	FT	M
Kitchen / Living / Dining	16' 8" x 17' 3"	5.07 m x 5.26 m
Primary Bedroom	9' 4" x 10' 8"	2.84 m x 3.25 m
Secondary Bedroom	8' 4" x 10' 8"	2.54 m x 3.25 m
Den	6' 10" x 7' 9"	2.08 m x 2.35 m

FLOORS

3 - 6

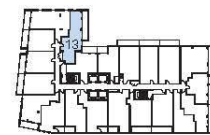
P-2N2-C

2 Bedrooms, 2 Bathrooms, Balcony



TOTAL	FT ²	M ²
Interior	761 ft ²	71 m ²
Exterior	155 ft ²	14 m ²
Total	916 ft ²	85 m ²

ORIENTATION NORTH



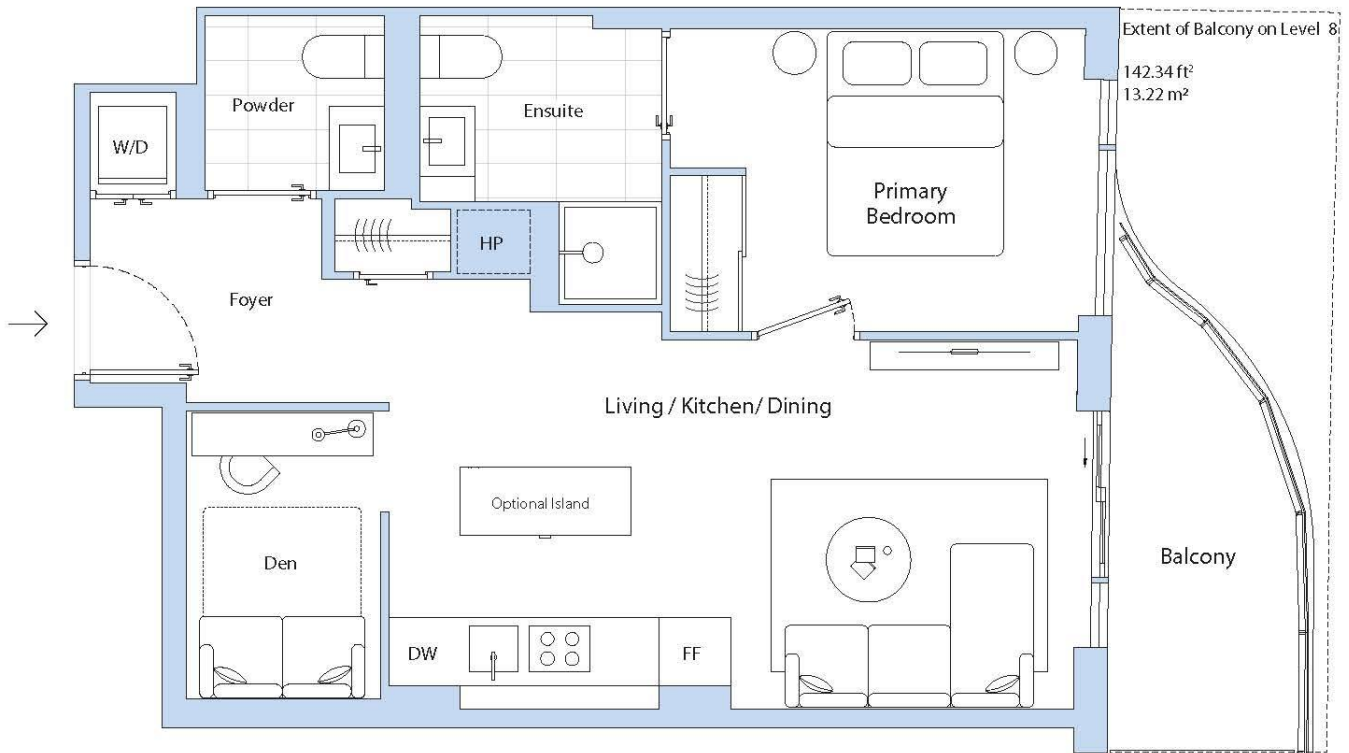
DIMENSIONS	FT	M
Kitchen / Living / Dining	20' 4" x 12' 6"	6.19 m x 3.80 m
Primary Bedroom	9' 0" x 11' 4"	2.74 m x 3.45 m
Secondary Bedroom	8' 0" x 8' 9"	2.44 m x 2.67 m

FLOORS

3 - 6

T-1D1-A

1 Bedroom, 1 Den, 1.5 Bathrooms, Balcony

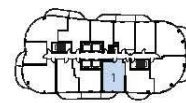


TOTAL	FT ²	M ²
Interior	623 ft ²	58 m ²
Exterior	76 ft ²	7 m ²
Total	699 ft ²	65 m ²

DIMENSIONS	FT	M
Living / Kitchen / Dining	20' 6" x 10' 11"	6.25 m x 3.33 m
Primary Bedroom	12' 7" x 8' 10"	3.84 m x 2.7 m
Den	5' 8" x 8' 5"	1.73 m x 2.57 m

ORIENTATION

NORTH



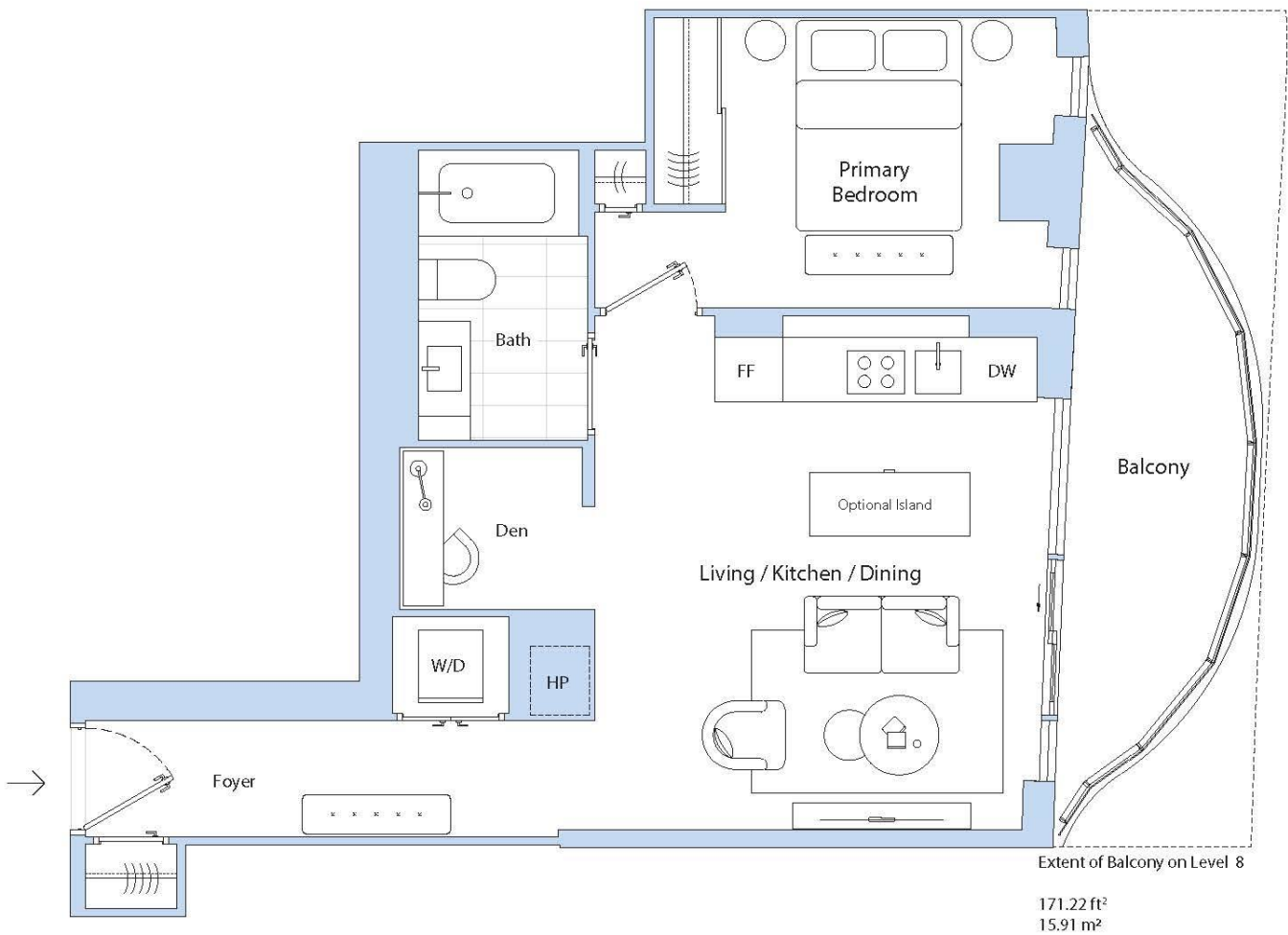
LEVEL 9 - 32



LEVEL 8

T-1D1-B

1 Bedroom, 1 Den, 1 Bathroom, Balcony

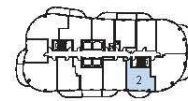


TOTAL	FT ²	M ²
Interior	605 ft ²	56 m ²
Exterior	99 ft ²	9 m ²
Total	704 ft ²	65 m ²

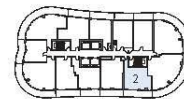
DIMENSIONS	FT	M
Living / Kitchen / Dining	14' 4" x 15' 4"	4.36 m x 4.67 m
Primary Bedroom	10' 10" x 9' 0"	3.29 m x 2.76 m
Den	5' 8" x 5' 0"	1.73 m x 1.54 m

ORIENTATION

NORTH



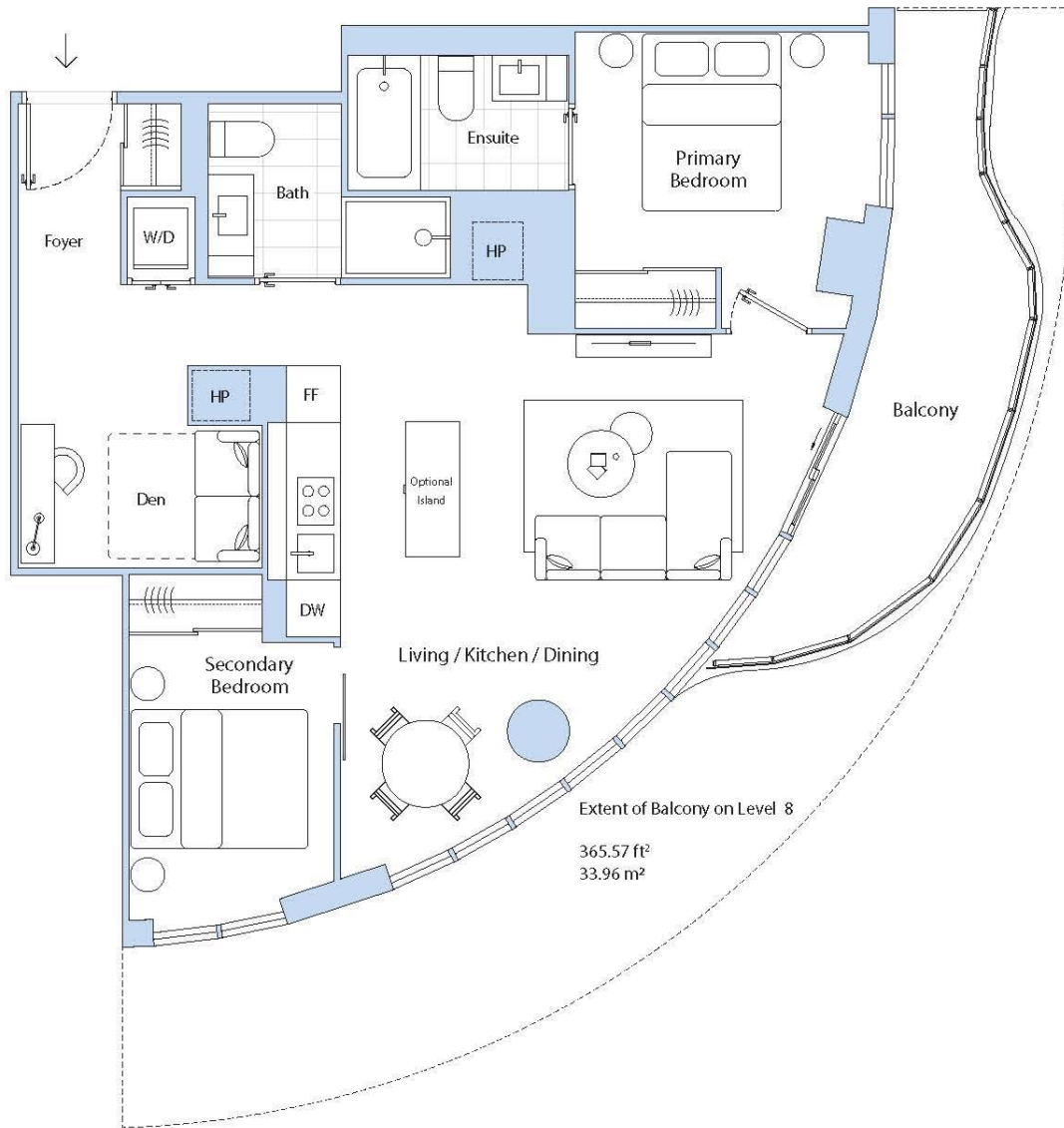
LEVEL 9 - 32



LEVEL 8

T-2D2-A

2 Bedrooms, 1 Den, 2 Bathrooms, Balcony



TOTAL	FT ²	M ²	ORIENTATION	NORTH
Interior	863 ft ²	80 m ²		
Exterior	132 ft ²	12 m ²		
Total	995 ft ²	92 m ²		
DIMENSIONS	FT	M	LEVEL 9 - 32	
Living / Kitchen / Dining	28' 3" x 20' 2"	8.64 m x 6.14 m		
Primary Bedroom	11' 4" x 10' 11"	3.46 m x 3.33 m		
Secondary Bedroom	7' 7" x 11' 0"	2.31 m x 3.34 m		
Den	9' 0" x 7' 6"	2.75 m x 2.28 m		

T-2N2-A

2 Bedrooms, 2 Bathrooms, Balcony

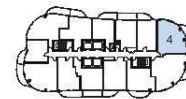


TOTAL	FT ²	M ²
Interior	772 ft ²	72 m ²
Exterior	162 ft ²	15 m ²
Total	934 ft²	87 m²

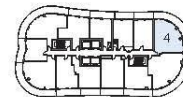
DIMENSIONS	FT	M
Living / Kitchen / Dining	13' 2" x 18' 2"	4.01 m x 5.53 m
Primary Bedroom	10' 0" x 10' 2"	3.05 m x 3.09 m
Secondary Bedroom	7' 10" x 9' 8"	2.39 m x 2.95 m

ORIENTATION

NORTH



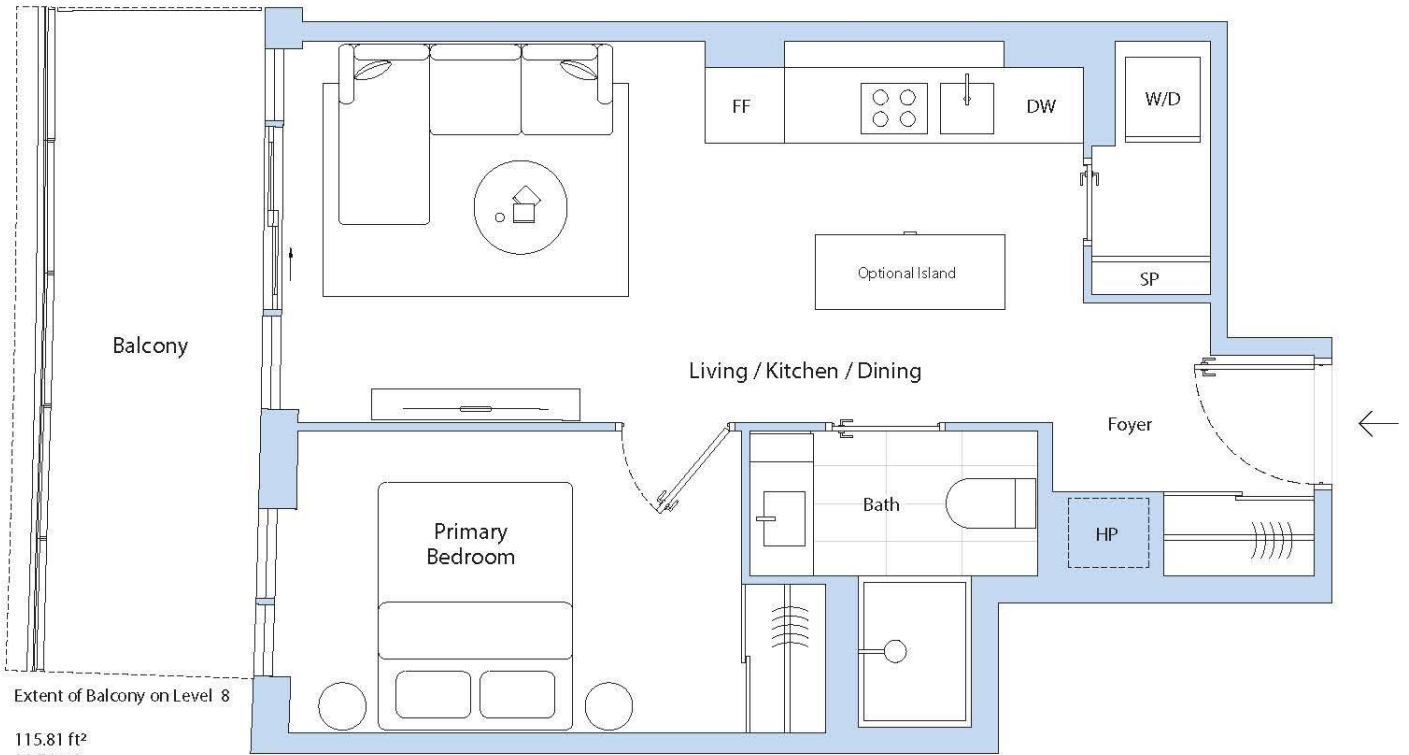
LEVEL 9 - 32



LEVEL 8

T-1N1-A

1 Bedroom, 1 Bathroom, Balcony



Extent of Balcony on Level 8

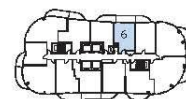
115.81 ft²
10.76 m²

TOTAL		
	FT ²	M ²
Interior	500 ft ²	46 m ²
Exterior	108 ft ²	10 m ²
Total	608 ft²	56 m²

DIMENSIONS		
	FT	M
Living / Kitchen / Dining	21' 3" x 10' 1"	6.48 m x 3.07 m
Primary Bedroom	12' 4" x 8' 0"	3.75 m x 2.43 m

ORIENTATION

NORTH



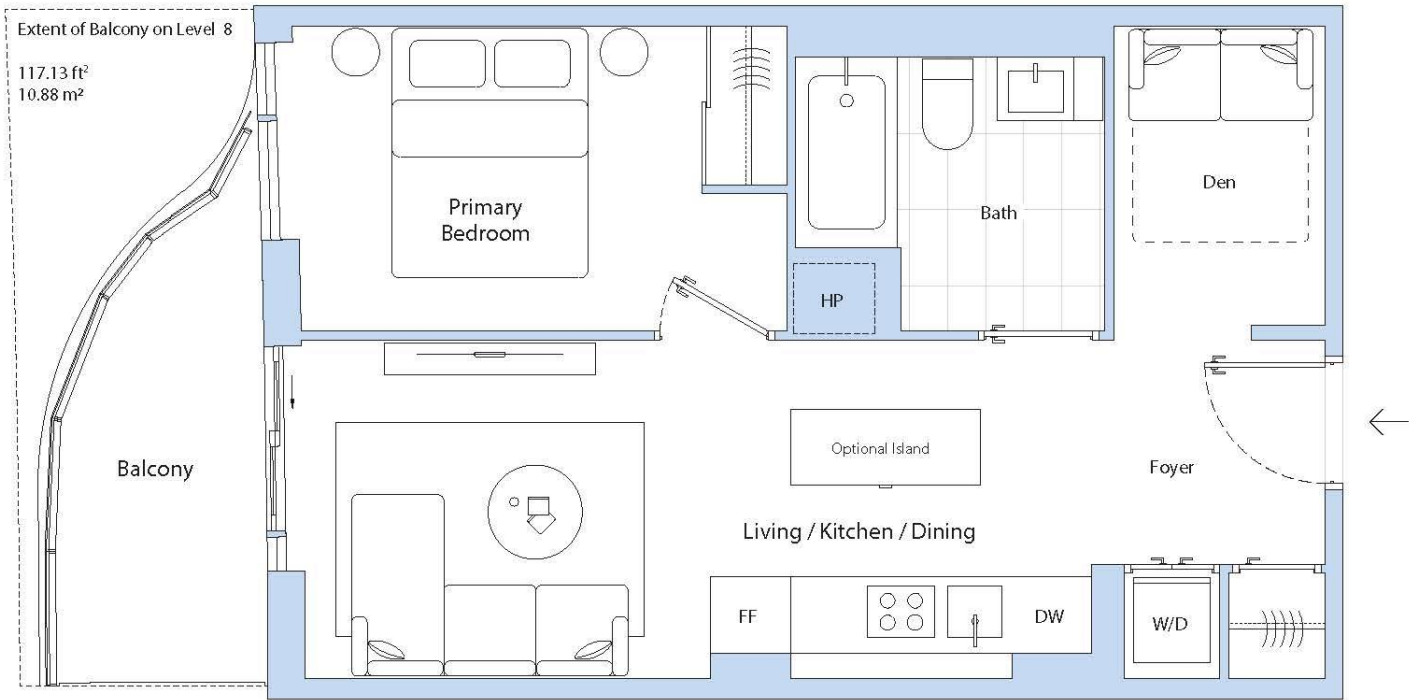
LEVEL 9 - 32



LEVEL 8

T-1D1-C

1 Bedroom, 1 Den, 1 Bathroom, Balcony

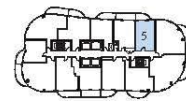


TOTAL	FT ²	M ²
Interior	528 ft ²	49 m ²
Exterior	72 ft ²	7 m ²
Total	600 ft ²	56 m ²

DIMENSIONS	FT	M
Living / Kitchen / Dining	21' 3" x 8' 11"	6.47 m x 2.71 m
Primary Bedroom	12' 9" x 8' 0"	3.89 m x 2.44 m
Den	5' 6" x 7' 11"	1.69 m x 2.41 m

ORIENTATION

NORTH



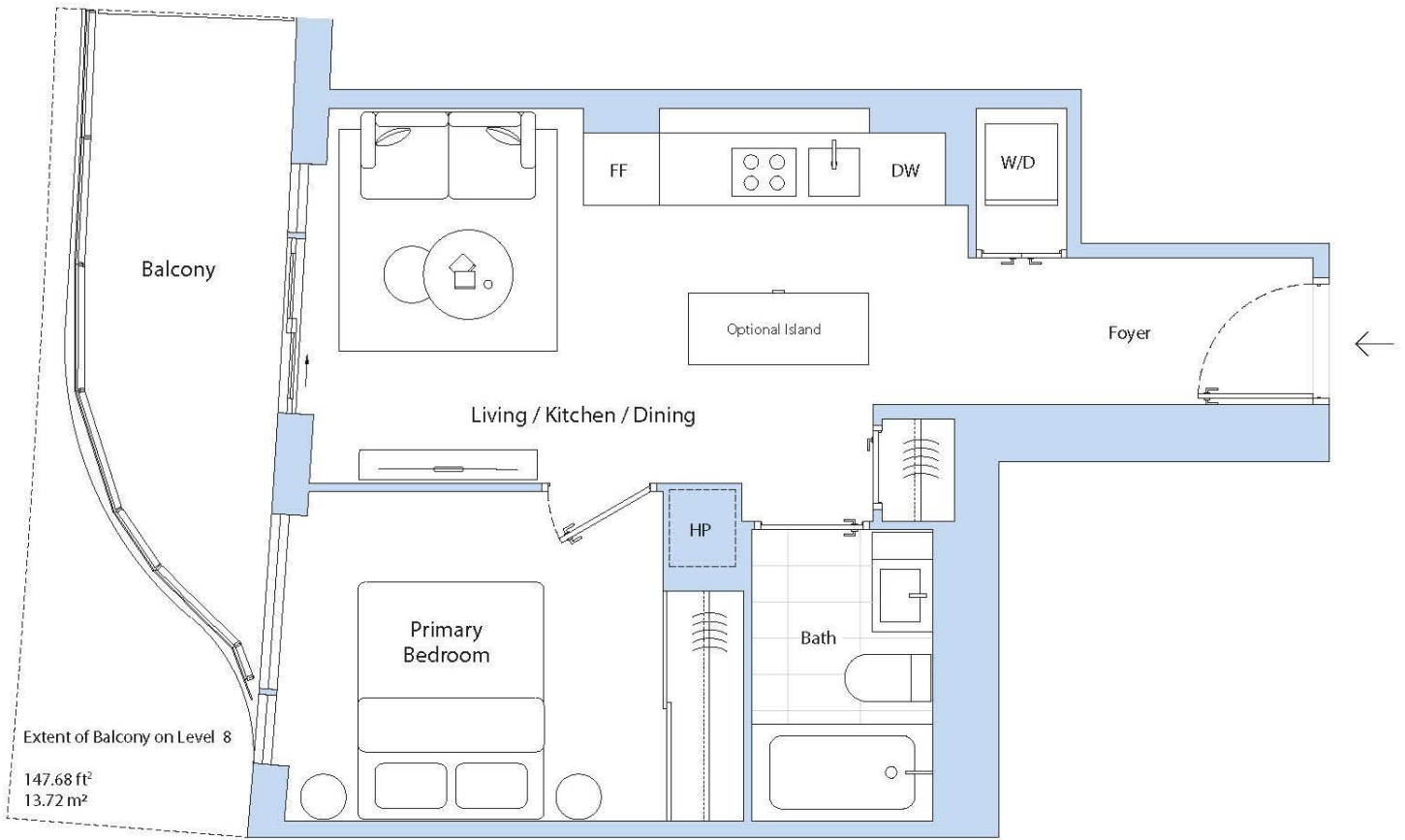
LEVEL 9 - 32



LEVEL 8

T-1N1-B

1 Bedroom, 1 Bathroom, Balcony

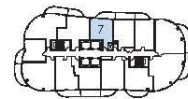


TOTAL	FT ²	M ²
Interior	490 ft ²	45 m ²
Exterior	95 ft ²	9 m ²
Total	585 ft ²	54 m ²

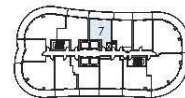
DIMENSIONS	FT	M
Living / Kitchen / Dining	17' 11" x 10' 4"	5.47 m x 3.15 m
Primary Bedroom	10' 10" x 9' 1"	3.29 m x 2.78 m

ORIENTATION

NORTH



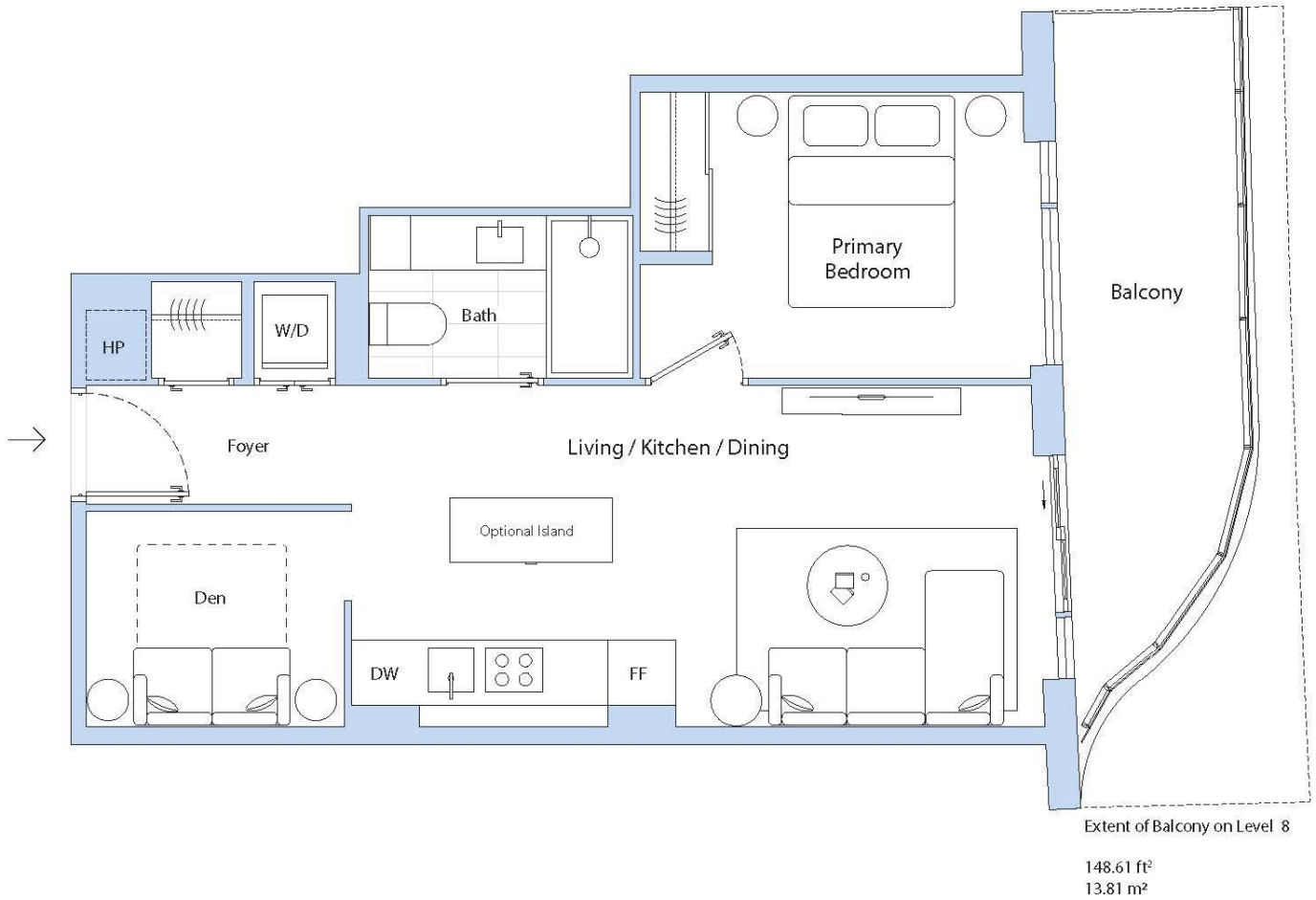
LEVEL 9 - 32



LEVEL 8

T-1D1-E

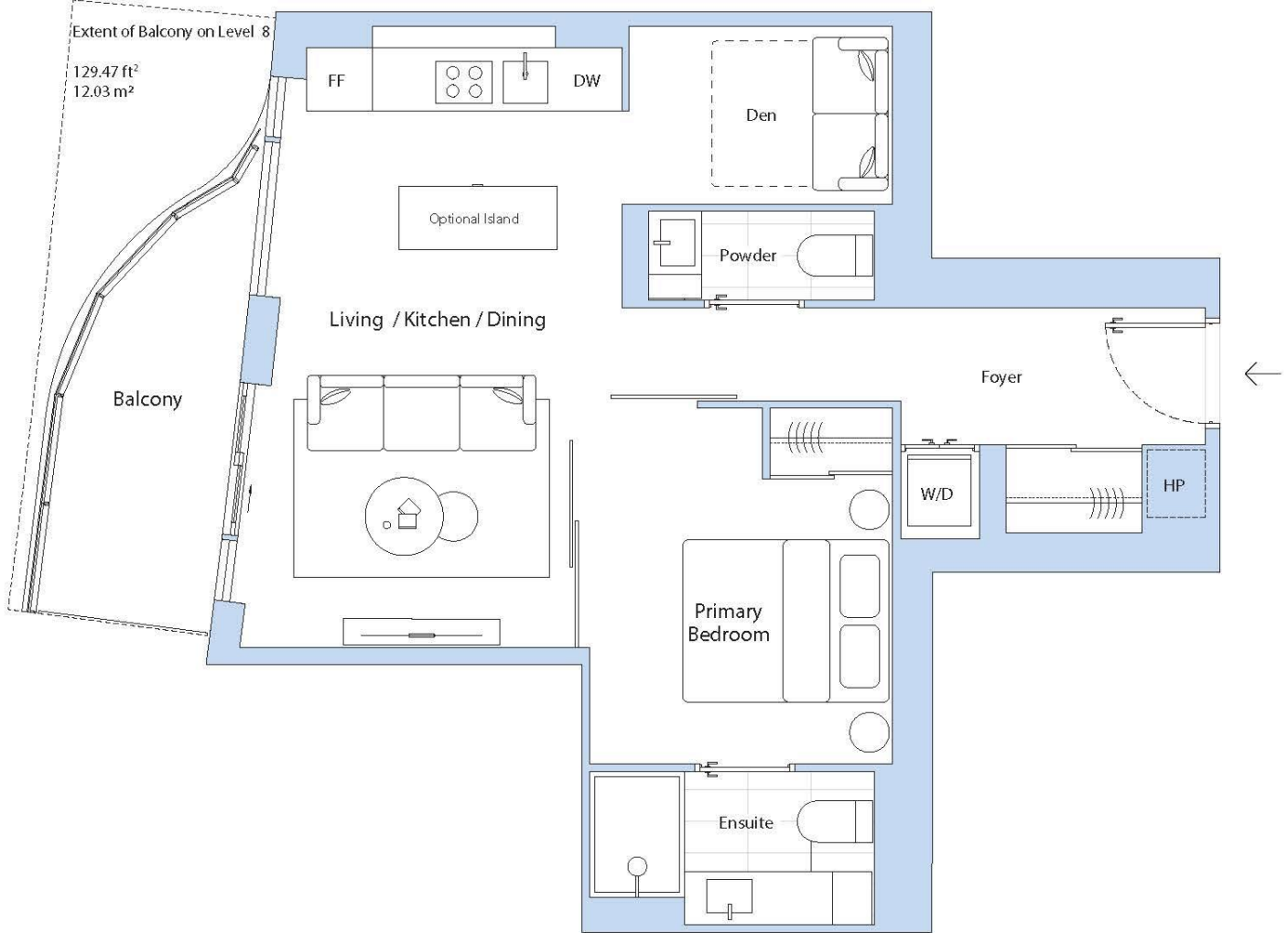
1 Bedroom, 1 Den, 1 Bathroom, Balcony



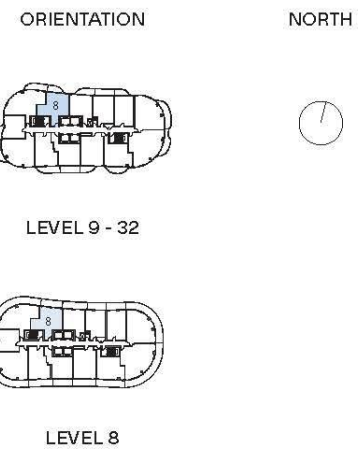
TOTAL	FT ²	M ²	ORIENTATION	NORTH
Interior	559 ft ²	52 m ²		
Exterior	120 ft ²	11 m ²		
Total	679 ft ²	63 m ²		
DIMENSIONS	FT	M	LEVEL 9 - 15, 17 - 32	
Living / Kitchen / Dining	21' 10" x 9' 1"	6.65 m x 3.01 m		
Primary Bedroom	12' 7" x 8' 10"	3.82 m x 2.68 m		
Den	8' 0" x 6' 8"	2.43 m x 2.03 m		
LEVEL 8				

T-1D1-D

1 Bedroom, 1 Den, 1.5 Bathrooms, Balcony

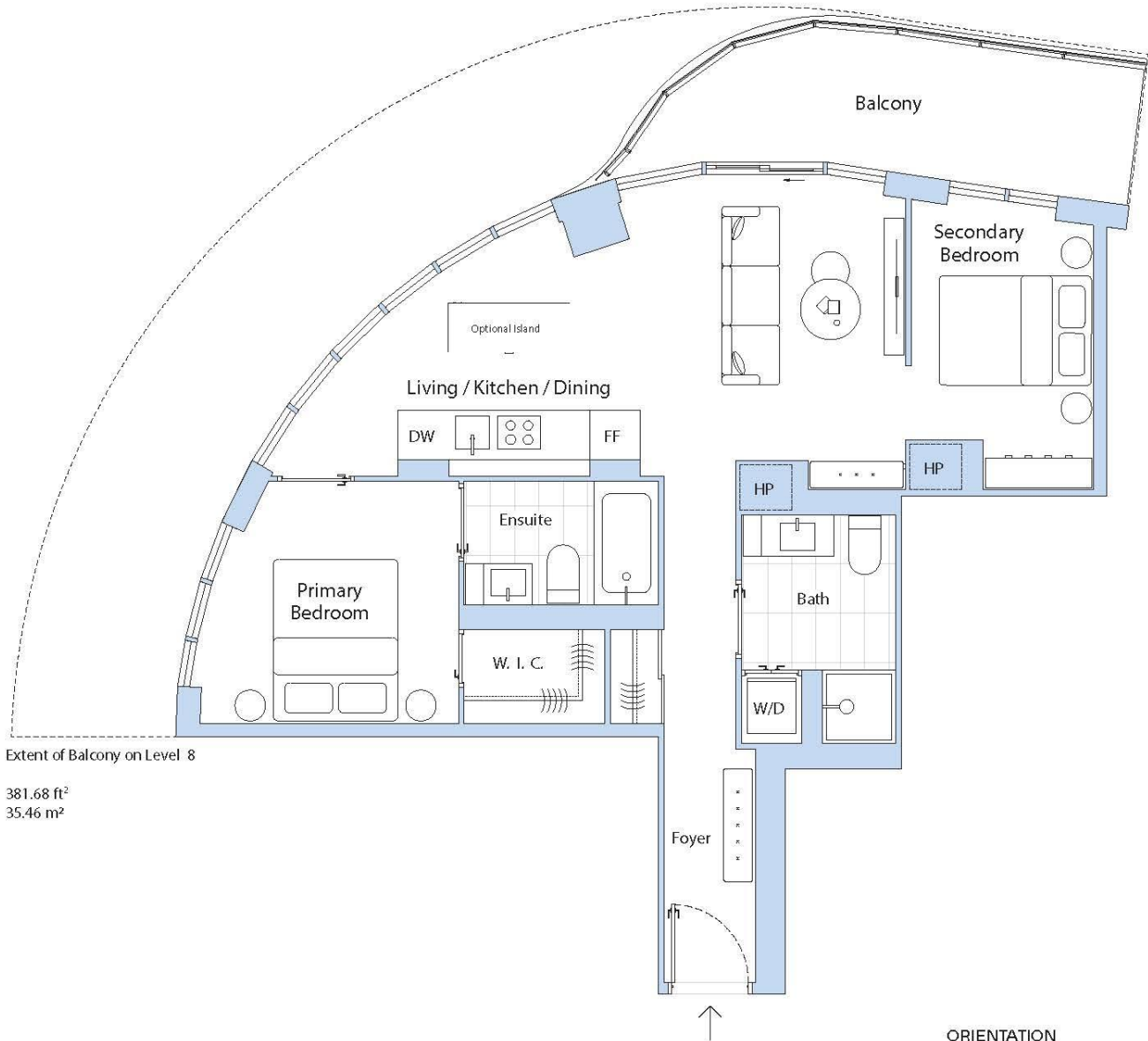


	FT ²	M ²
TOTAL		
Interior	643 ft ²	60 m ²
Exterior	78 ft ²	7 m ²
Total	721 ft²	67 m²
DIMENSIONS	FT	M
Living / Kitchen / Dining	11' 4" x 19' 0"	3.45 m x 5.79 m
Primary Bedroom	9' 11" x 11' 3"	3.03 m x 3.43 m
Den	8' 4" x 5' 8"	2.54 m x 1.72 m



T-2N2-B

2 Bedrooms, 2 Bathrooms, Balcony



Extent of Balcony on Level 8

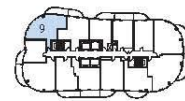
381.68 ft²
35.46 m²

TOTAL	FT ²	M ²
Interior	761 ft ²	71 m ²
Exterior	120 ft ²	11 m ²
Total	881 ft ²	82 m ²

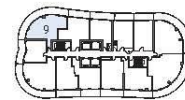
DIMENSIONS	FT	M
Living / Kitchen / Dining	20' 11" x 11' 4"	6.39 m x 3.45 m
Primary Bedroom	11' 1" x 9' 10"	3.38 m x 2.99 m
Secondary Bedroom	7' 7" x 11' 5"	2.30 m x 3.48 m

ORIENTATION

NORTH



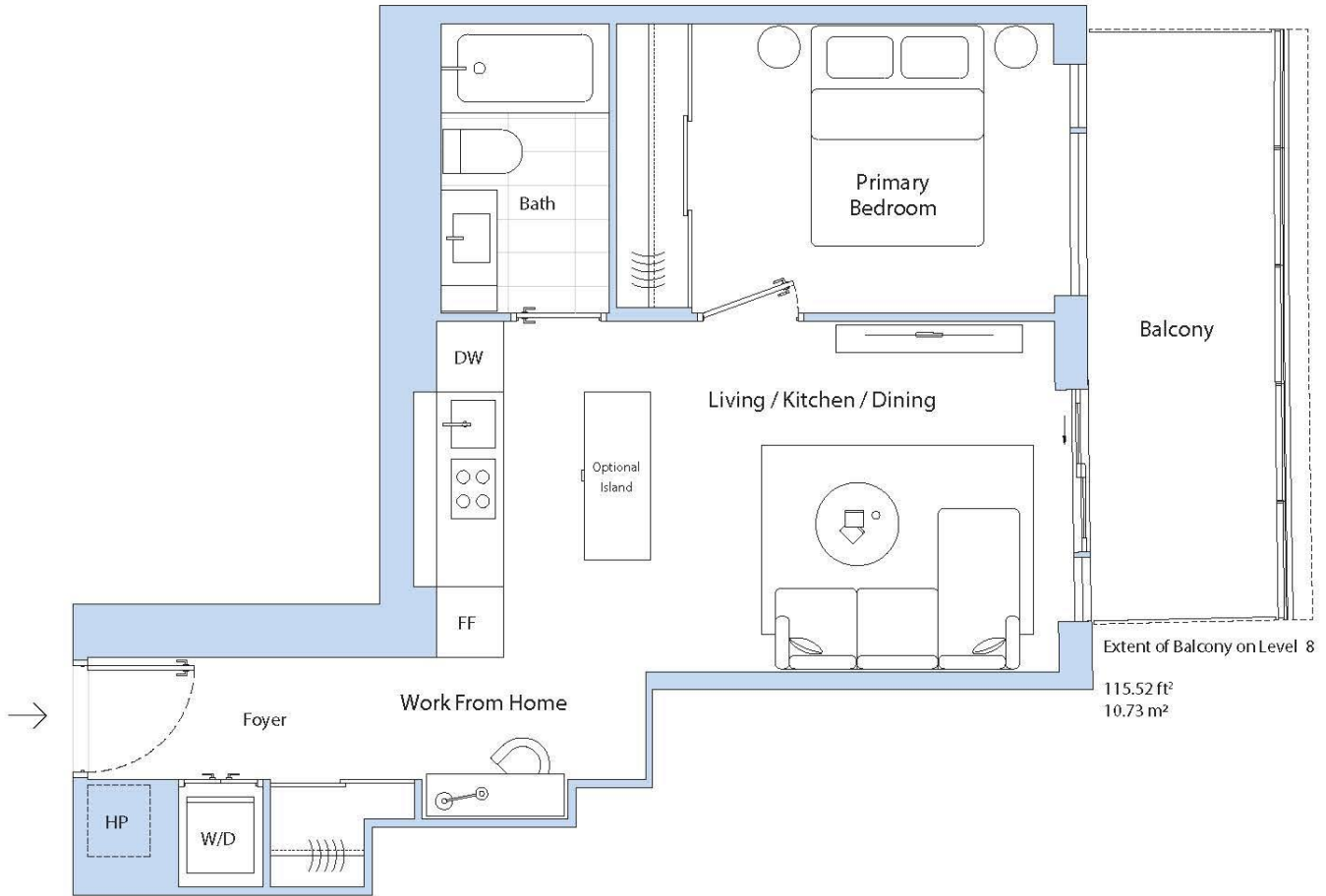
LEVEL 9 - 32



LEVEL 8

T-1W1-A

1 Bedroom, 1 Bathroom, Balcony



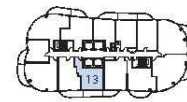
115.52 ft²
10.73 m²

TOTAL	FT ²	M ²
Interior	550 ft ²	51 m ²
Exterior	108 ft ²	10 m ²
Total	658 ft ²	61 m ²

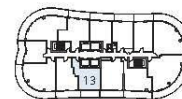
DIMENSIONS	FT	M
Living / Kitchen / Dining	18' 11" x 10' 5"	5.76 m x 3.18 m
Primary Bedroom	11' 3" x 8' 8"	3.43 m x 2.63 m
Work From Home	6' 8" x 4' 10"	2.03 m x 1.47 m

ORIENTATION

NORTH



LEVEL 9 - 32



LEVEL 8

T-2N2-C

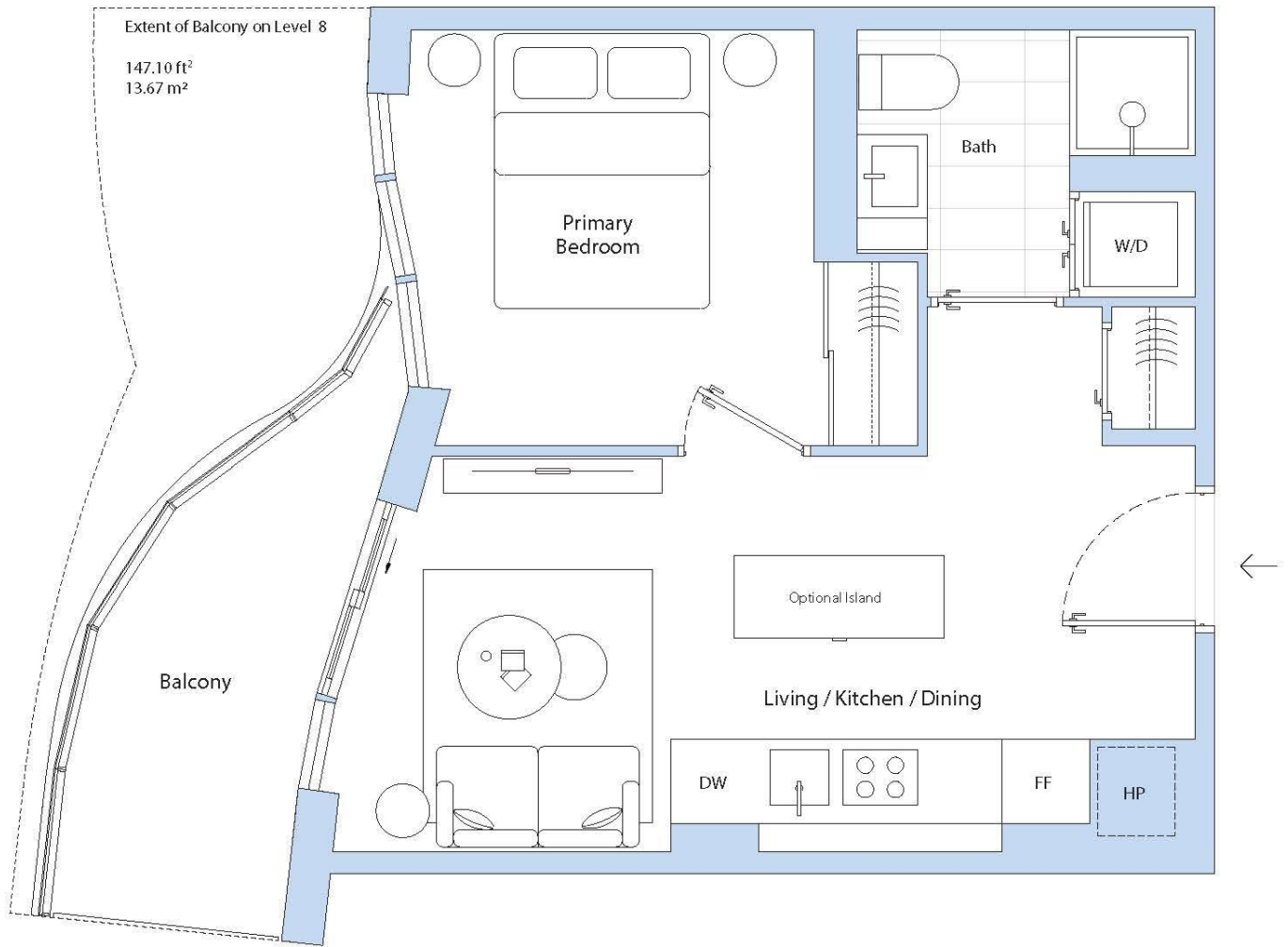
2 Bedrooms, 2 Bathrooms, Balcony



			ORIENTATION	NORTH
TOTAL	FT ²	M ²		
Interior	768 ft ²	71 m ²		
Exterior	126 ft ²	12 m ²		
Total	894 ft ²	83 m ²		
DIMENSIONS			LEVEL 9 - 32	
Living / Kitchen / Dining	17' 15" x 15' 8"	5.57 m x 4.78 m		
Primary Bedroom	9' 10" x 9' 2"	2.99 m x 2.78 m		
Secondary Bedroom	7' 8" x 11' 10"	2.34 m x 3.61 m		
			LEVEL 8	

T-1N1-C

1 Bedroom, 1 Bathroom, Balcony

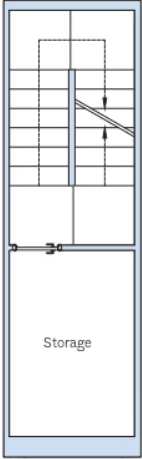


			ORIENTATION	NORTH
TOTAL	FT ²	M ²		
Interior	427 ft ²	40 m ²		
Exterior	77 ft ²	7 m ²		
Total	504 ft ²	47 m ²		
DIMENSIONS				
Living / Kitchen / Dining	20' 11" x 9' 5"	6.37 m x 2.87 m		
Primary Bedroom	10' 2" x 9' 11"	3.10 m x 3.02 m		

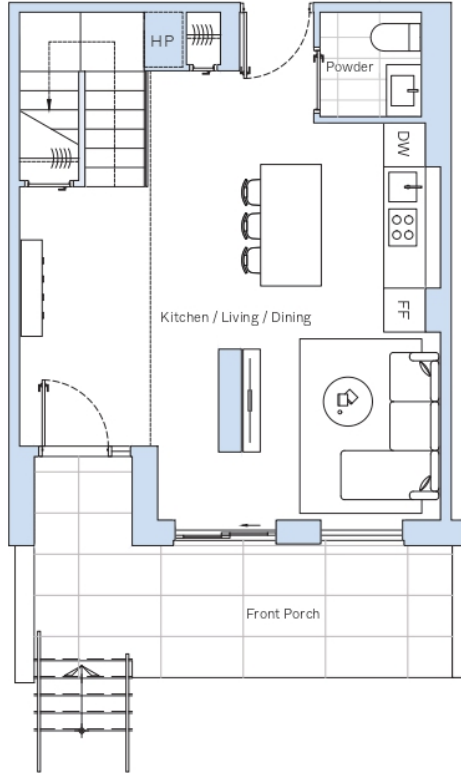
TOWN-1

2 Bedrooms, 1 Den, 2.5 Bathrooms, Porch , Balcony

LOWER LEVEL



GROUND FLOOR



SECOND LEVEL



TOTAL

FT²

M²

ORIENTATION

NORTH

Interior
Exterior
Total

1243 ft²
241 ft²
1484 ft²

115 m²
22 m²
137 m²



DIMENSIONS

FT

M

LEVEL 1

Living / Kitchen / Dining
Primary Bedroom
Bedroom Two
Den

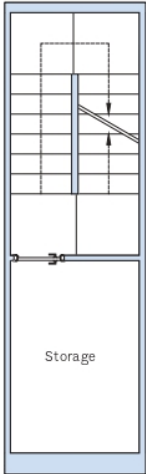
24' 9" X 19' 5"
17' 2" X 10' 5"
13' 7" X 9' 6"
8' 11" X 9' 6"

7.55 m X 5.93 m
5.23 m X 3.17 m
4.14 m X 2.90 m
2.72 m X 2.90 m

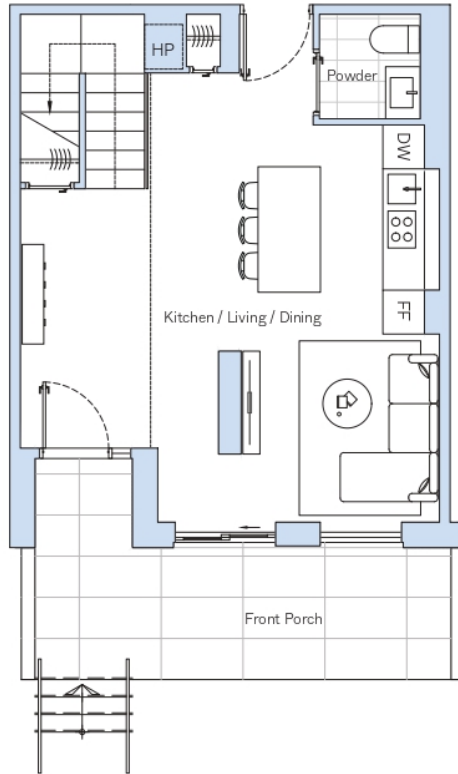
TOWN-2

2 Bedrooms, 1 Den, 2.5 Bathrooms, Porch , Balcony

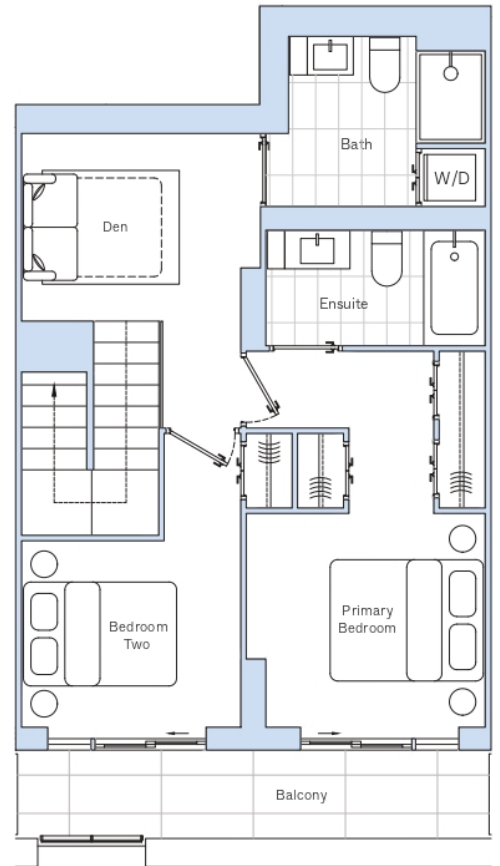
LOWER LEVEL



GROUND FLOOR



SECOND LEVEL



TOTAL	FT ²	M ²	ORIENTATION	NORTH
Interior	1240 ft ²	115 m ²		
Exterior	224 ft ²	21 m ²		
Total	1464 ft²	136 m²		

DIMENSIONS	FT	M	LEVEL 1
Living / Kitchen / Dining	24' 9" X 19' 5"	7.55 m X 5.93 m	
Primary Bedroom	16' 9" X 10' 5"	5.11 m X 3.17 m	
Bedroom Two	13' 2" X 9' 6"	4.03 m X 2.90 m	
Den	8' 1" X 10' 5"	2.48 m X 3.17 m	

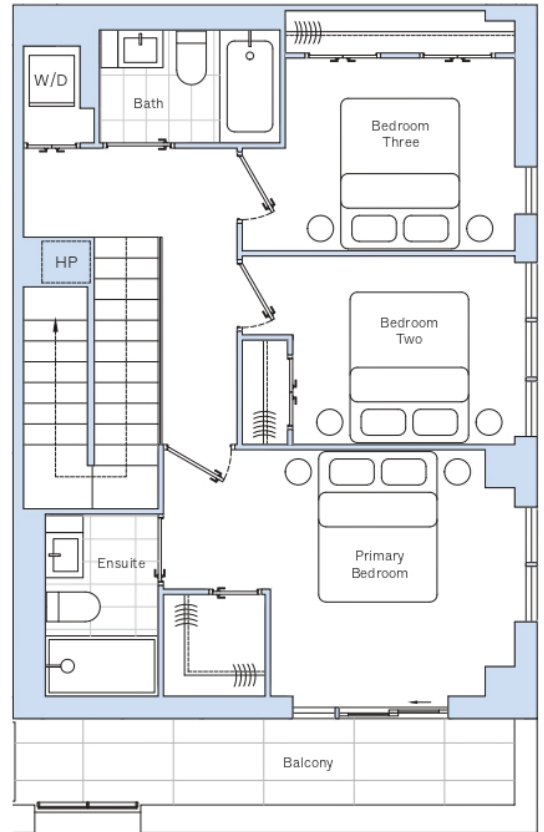
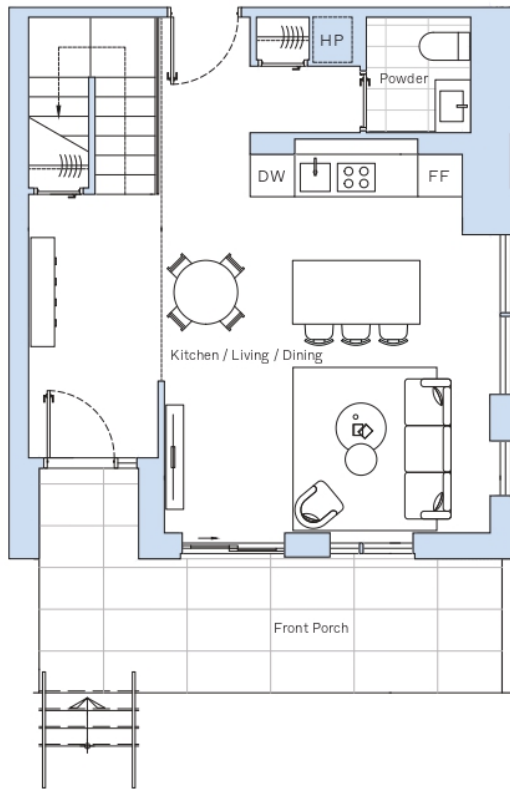
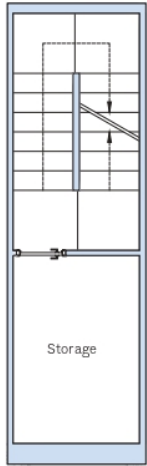
TOWN-4

3 Bedrooms, 2.5 Bathrooms, Porch , Balcony

LOWER LEVEL

GROUND FLOOR

SECOND LEVEL



TOTAL

FT²

M²

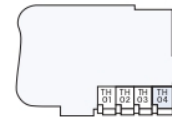
ORIENTATION

NORTH

Interior
Exterior
Total

1422 ft²
242 ft²
1664 ft²

132 m²
22 m²
154 m²



DIMENSIONS

FT

M

LEVEL 1

Living / Kitchen / Dining
Primary Bedroom
Bedroom Two
Bedroom Three

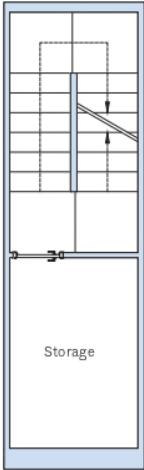
20' 5" X 18' 4"
16' 1" X 11' 5"
12' 7" X 8' 4"
12' 7" X 8' 5"

6.24m X 5.59 m
4.89 m X 3.48 m
3.83 m X 2.54 m
3.83 m X 2.56 m

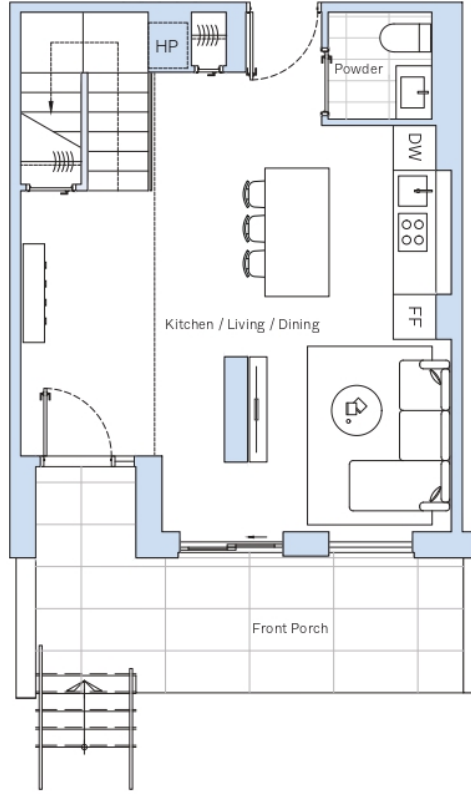
TOWN-3

2 Bedrooms, 1 Den, 2.5 Bathrooms, Porch , Balcony

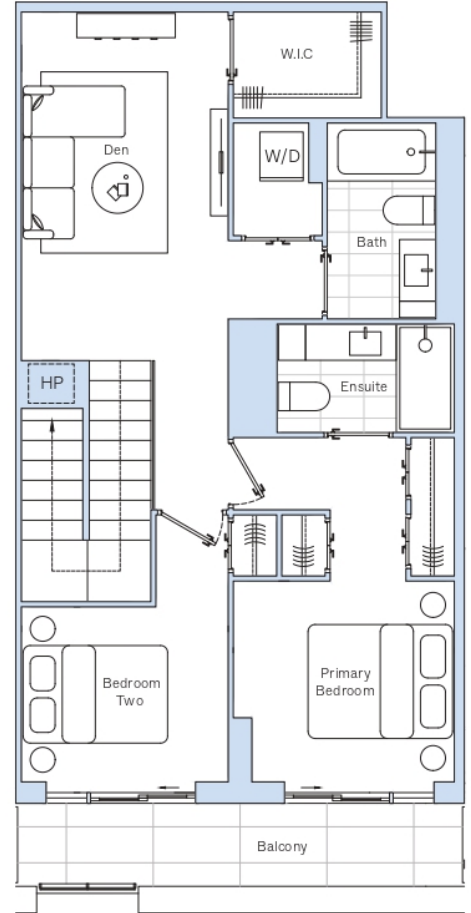
LOWER LEVEL



GROUND FLOOR



SECOND LEVEL



TOTAL

FT²

M²

ORIENTATION

NORTH

Interior
Exterior
Total

1369 ft²
224 ft²
1593 ft²

127 m²
21 m²
148 m²



DIMENSIONS

FT

M

LEVEL 1

Living / Kitchen / Dining
Primary Bedroom
Bedroom Two
Den

24' 9" X 19' 3"
16' 4" X 10' 2"
12' 10" X 9' 6"
16' 1" X 9'

7.55 m X 5.88 m
4.98 m X 3.11 m
3.90 m X 2.91 m
4.89 m X 2.91 m