

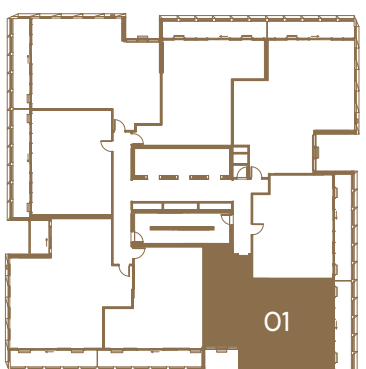
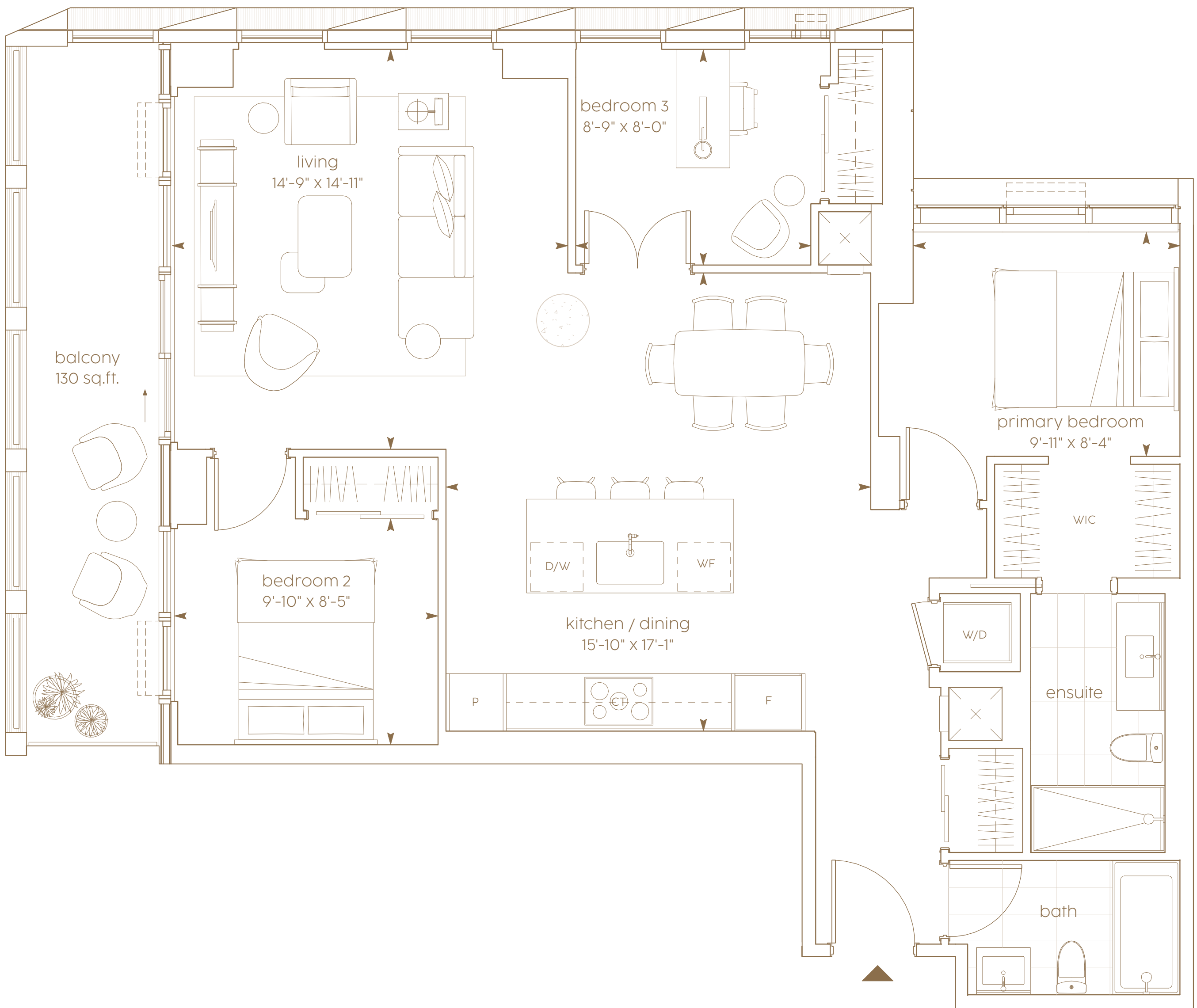
BEDFORD

3 bedroom

interior living area | 1,104 sf

outdoor living area | 130 sf

total living area | 1,234 sf



level 25-lower penthouse



*Prices, sizes and specifications subject to change without notice. E.&O.E. The dimensions shown of this plan are approximate and subject to normal construction variances. Actual useable floor space within the unit may vary from any stated floor areas or dimensions on this plan. Furniture is displayed for illustration purposes only and does not necessarily reflect the electrical, cable or internet outlets. Suites are sold unfurnished. For more information on the method used for calculating the floor area of any unit, reference should be made to Home Construction Regulatory Authority ("HCRA") Directive.

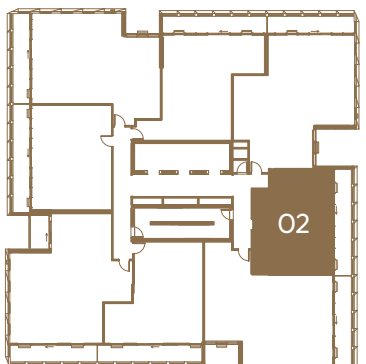
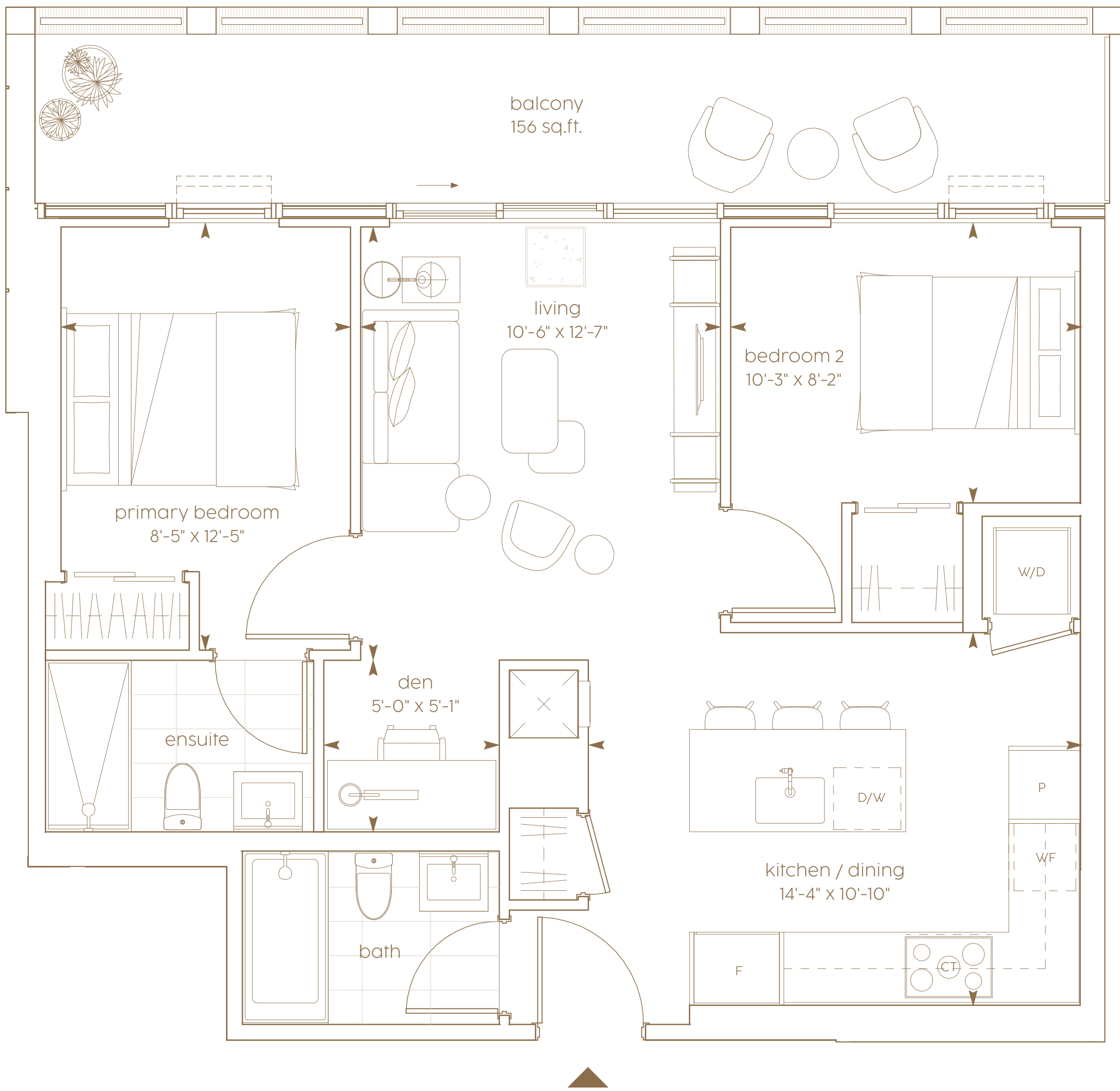
BERNARD

2 bedroom + den

interior living area | 726 sf

outdoor living area | 156 sf

total living area | 882 sf



level 25-lower penthouse



*Prices, sizes and specifications subject to change without notice. E.&O.E. The dimensions shown of this plan are approximate and subject to normal construction variances. Actual useable floor space within the unit may vary from any stated floor areas or dimensions on this plan. Furniture is displayed for illustration purposes only and does not necessarily reflect the electrical, cable or internet outlets. Suites are sold unfurnished. For more information on the method used for calculating the floor area of any unit, reference should be made to Home Construction Regulatory Authority ("HCRA") Directive.



CIELO

300 BLOOR STREET WEST

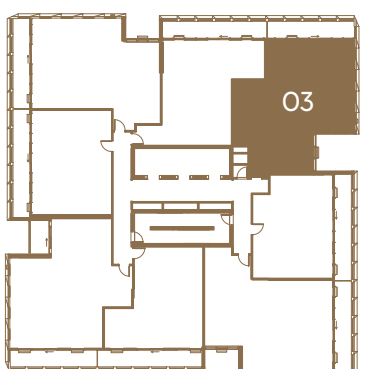
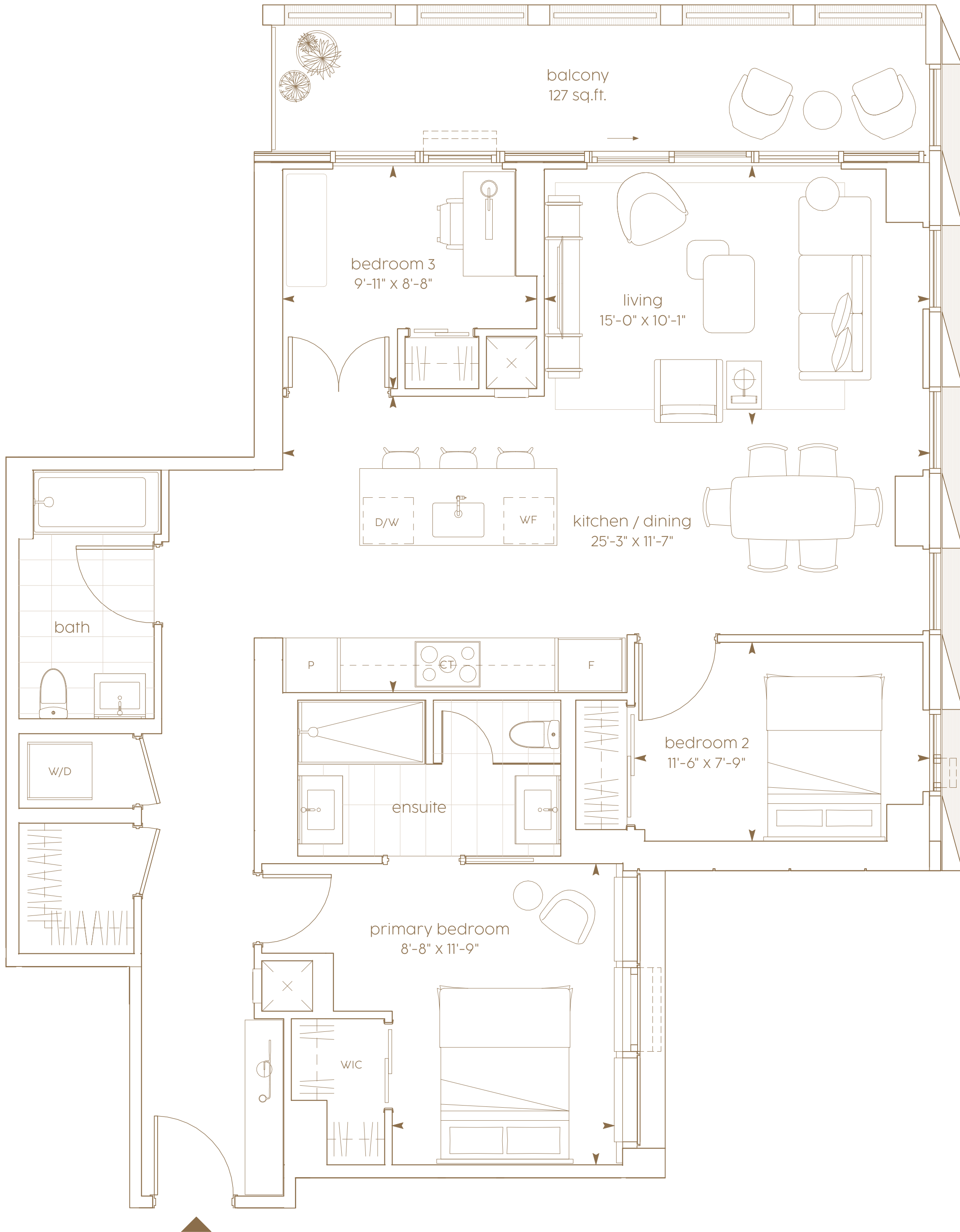
BRUNSWICK

3 bedroom

interior living area | 1,163 sf

outdoor living area | 127 sf

total living area | 1,290 sf



level 25-lower penthouse



*Prices, sizes and specifications subject to change without notice. E.&O.E. The dimensions shown of this plan are approximate and subject to normal construction variances. Actual useable floor space within the unit may vary from any stated floor areas or dimensions on this plan. Furniture is displayed for illustration purposes only and does not necessarily reflect the electrical, cable or internet outlets. Suites are sold unfurnished. For more information on the method used for calculating the floor area of any unit, reference should be made to Home Construction Regulatory Authority ("HCRA") Directive.



CIELO

300 BLOOR STREET WEST

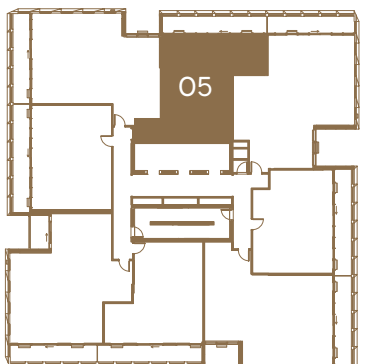
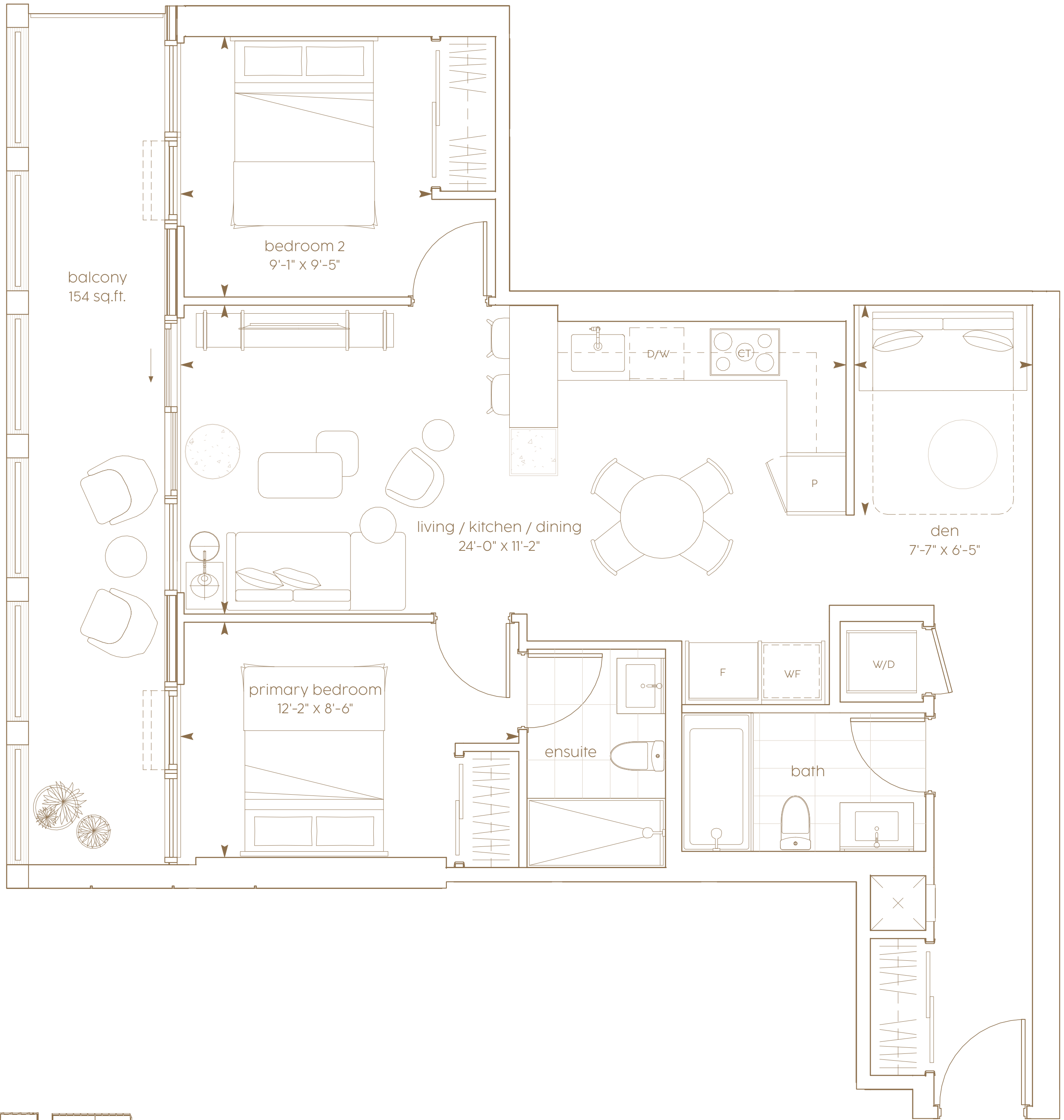
HURON

2 bedroom + den

interior living area | 852 sf

outdoor living area | 154 sf

total living area | 1,006 sf



level 25-lower penthouse



*Prices, sizes and specifications subject to change without notice. E.&O.E. The dimensions shown of this plan are approximate and subject to normal construction variances. Actual useable floor space within the unit may vary from any stated floor areas or dimensions on this plan. Furniture is displayed for illustration purposes only and does not necessarily reflect the electrical, cable or internet outlets. Suites are sold unfurnished. For more information on the method used for calculating the floor area of any unit, reference should be made to Home Construction Regulatory Authority ("HCRA") Directive.



CIELO

300 BLOOR STREET WEST

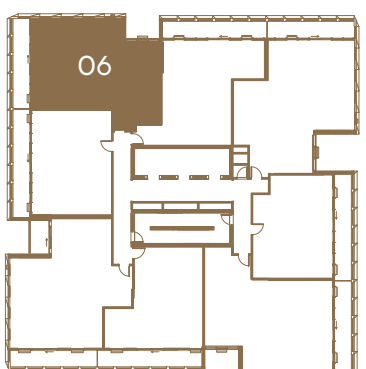
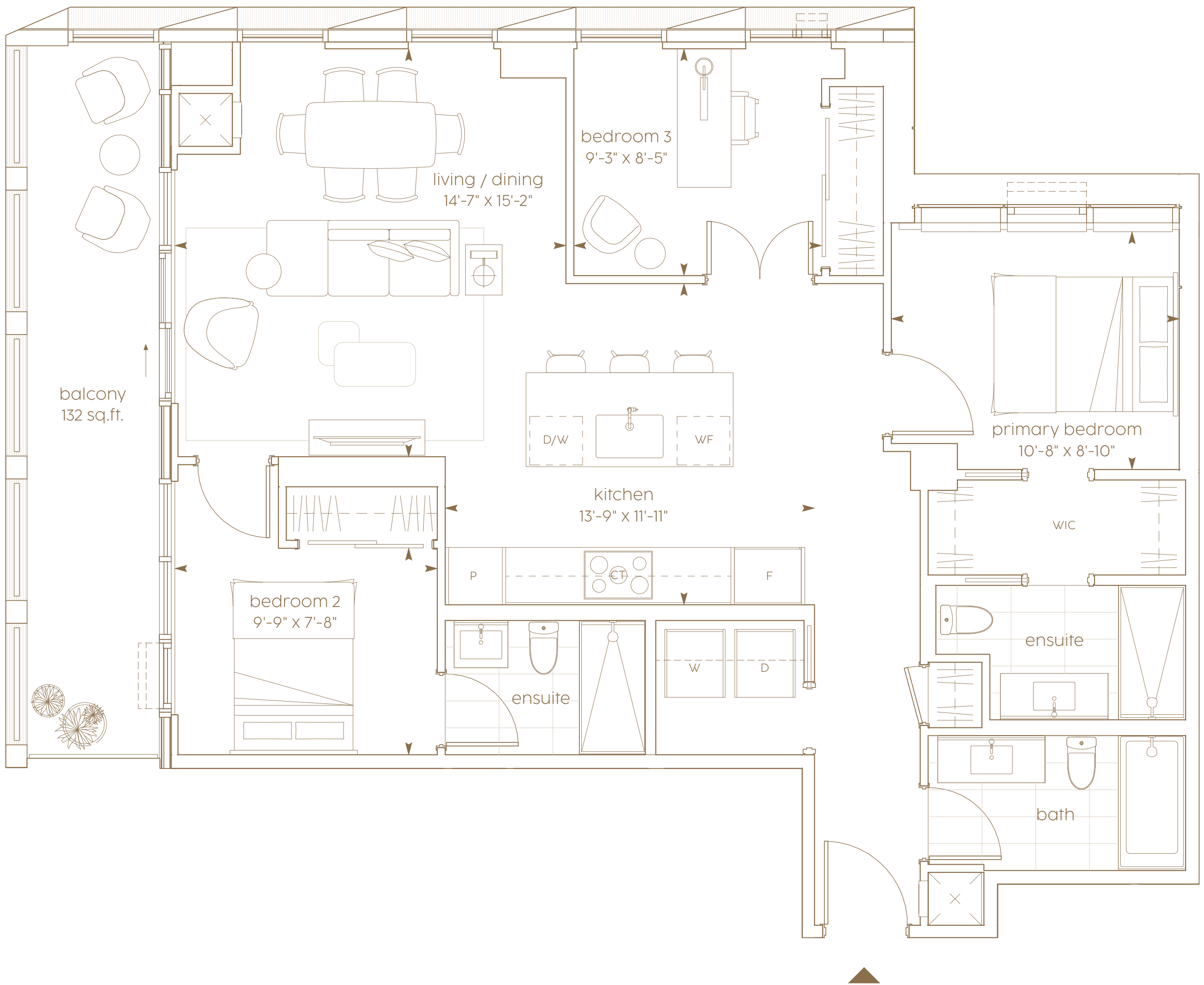
KENDAL

3 bedroom

interior living area | 1,062 sf

outdoor living area | 132 sf

total living area | 1,194 sf



level 25-lower penthouse



*Prices, sizes and specifications subject to change without notice. E.&O.E. The dimensions shown of this plan are approximate and subject to normal construction variances. Actual useable floor space within the unit may vary from any stated floor areas or dimensions on this plan. Furniture is displayed for illustration purposes only and does not necessarily reflect the electrical, cable or internet outlets. Suites are sold unfurnished. For more information on the method used for calculating the floor area of any unit, reference should be made to Home Construction Regulatory Authority ("HCRA") Directive.



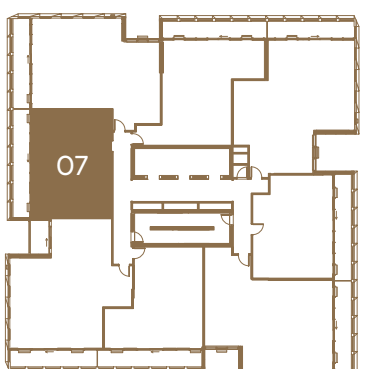
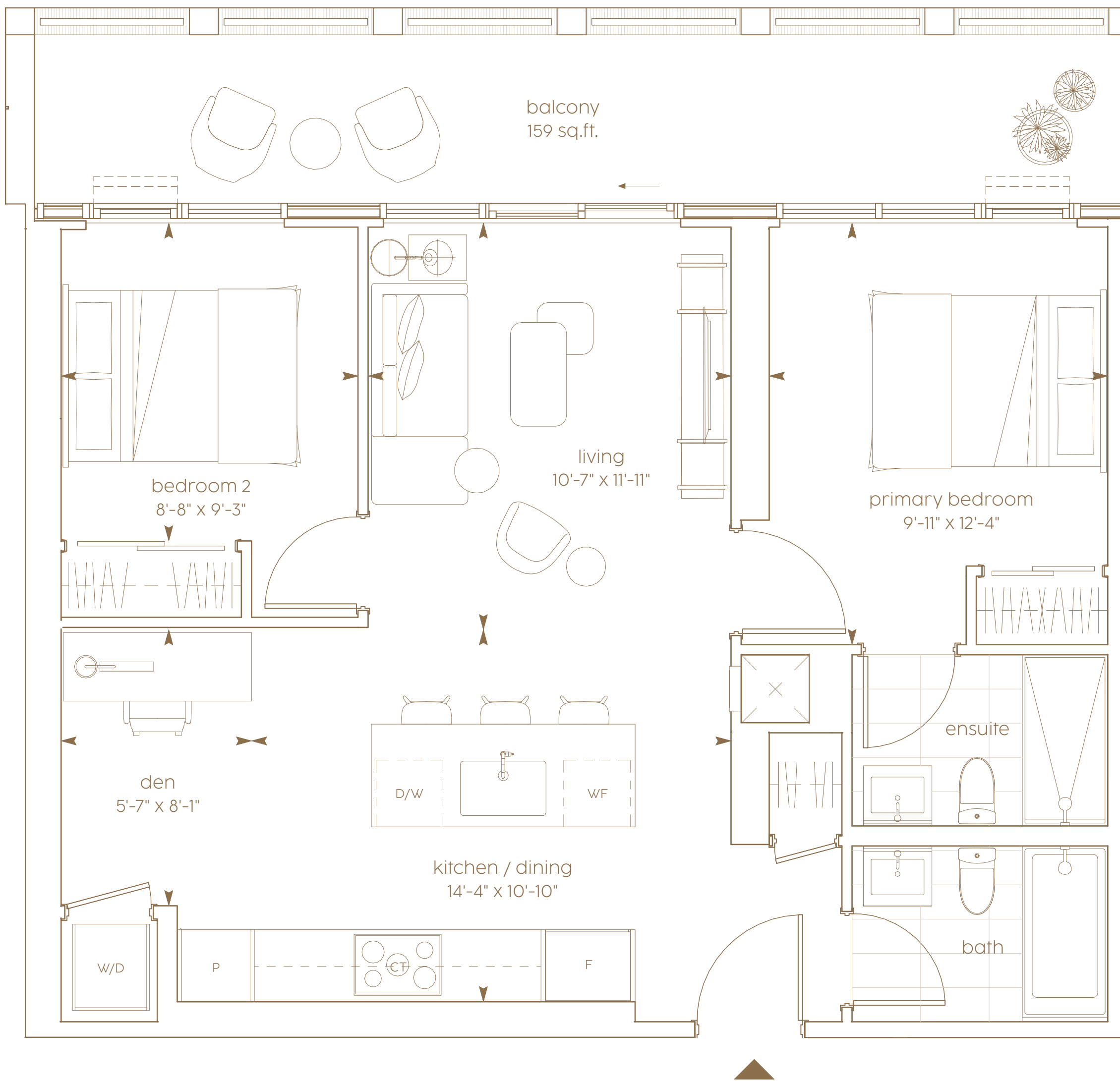
LOWTHER

2 bedroom + den

interior living area | 769 sf

outdoor living area | 159 sf

total living area | 928 sf



level 25-lower penthouse



*Prices, sizes and specifications subject to change without notice. E.&O.E. The dimensions shown of this plan are approximate and subject to normal construction variances. Actual useable floor space within the unit may vary from any stated floor areas or dimensions on this plan. Furniture is displayed for illustration purposes only and does not necessarily reflect the electrical, cable or internet outlets. Suites are sold unfurnished. For more information on the method used for calculating the floor area of any unit, reference should be made to Home Construction Regulatory Authority ("HCRA") Directive.

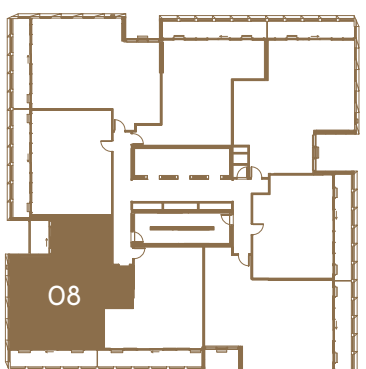
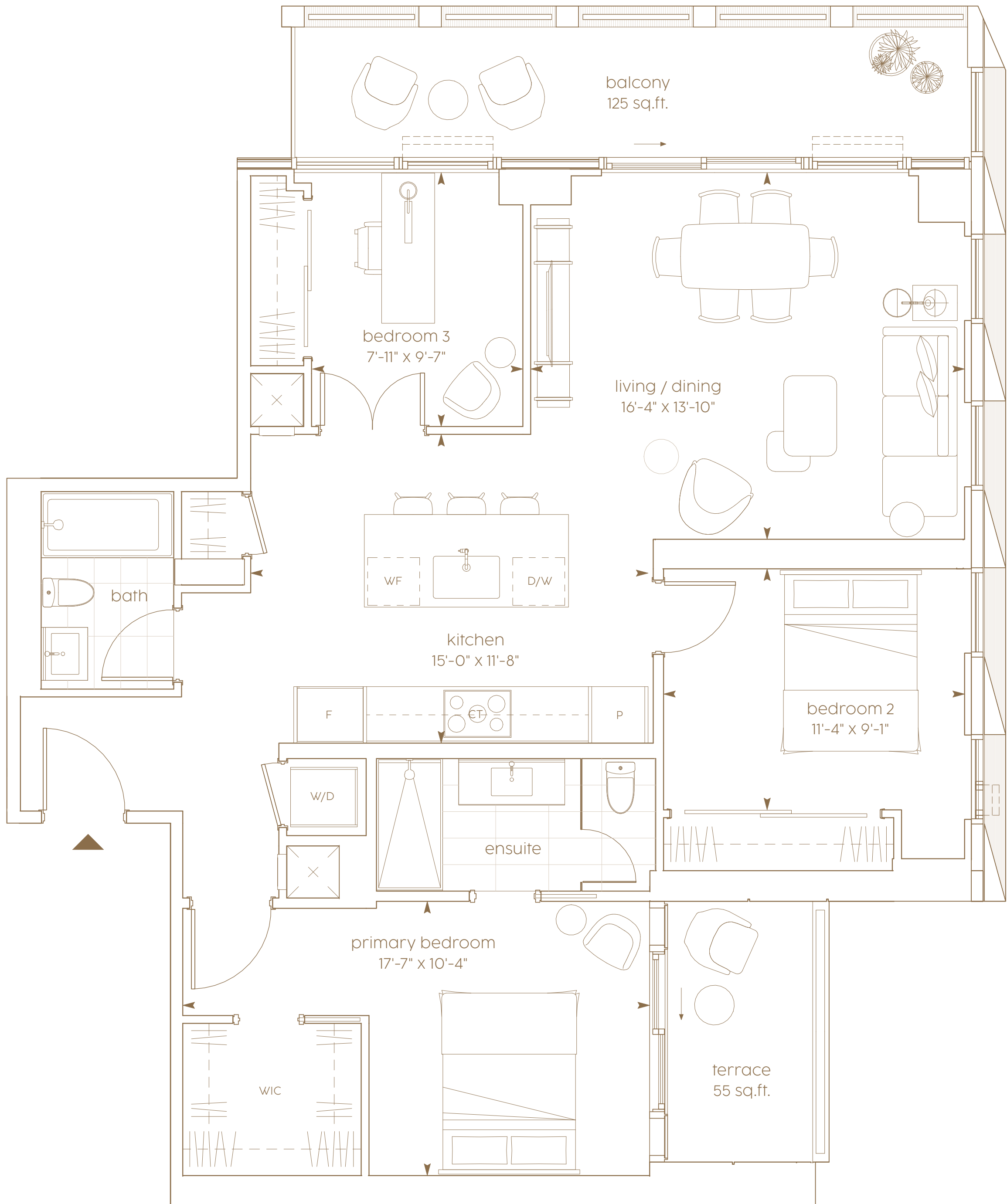
MADISON

3 bedroom

interior living area | 1,113 sf

outdoor living area | 180 sf

total living area | 1,293 sf



level 25-lower penthouse



*Prices, sizes and specifications subject to change without notice. E.&O.E. The dimensions shown of this plan are approximate and subject to normal construction variances. Actual useable floor space within the unit may vary from any stated floor areas or dimensions on this plan. Furniture is displayed for illustration purposes only and does not necessarily reflect the electrical, cable or internet outlets. Suites are sold unfurnished. For more information on the method used for calculating the floor area of any unit, reference should be made to Home Construction Regulatory Authority ("HCRA") Directive.

CIELO

300 BLOOR STREET WEST

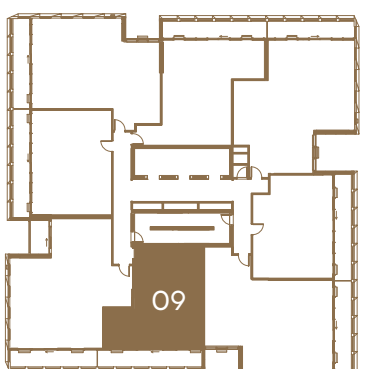
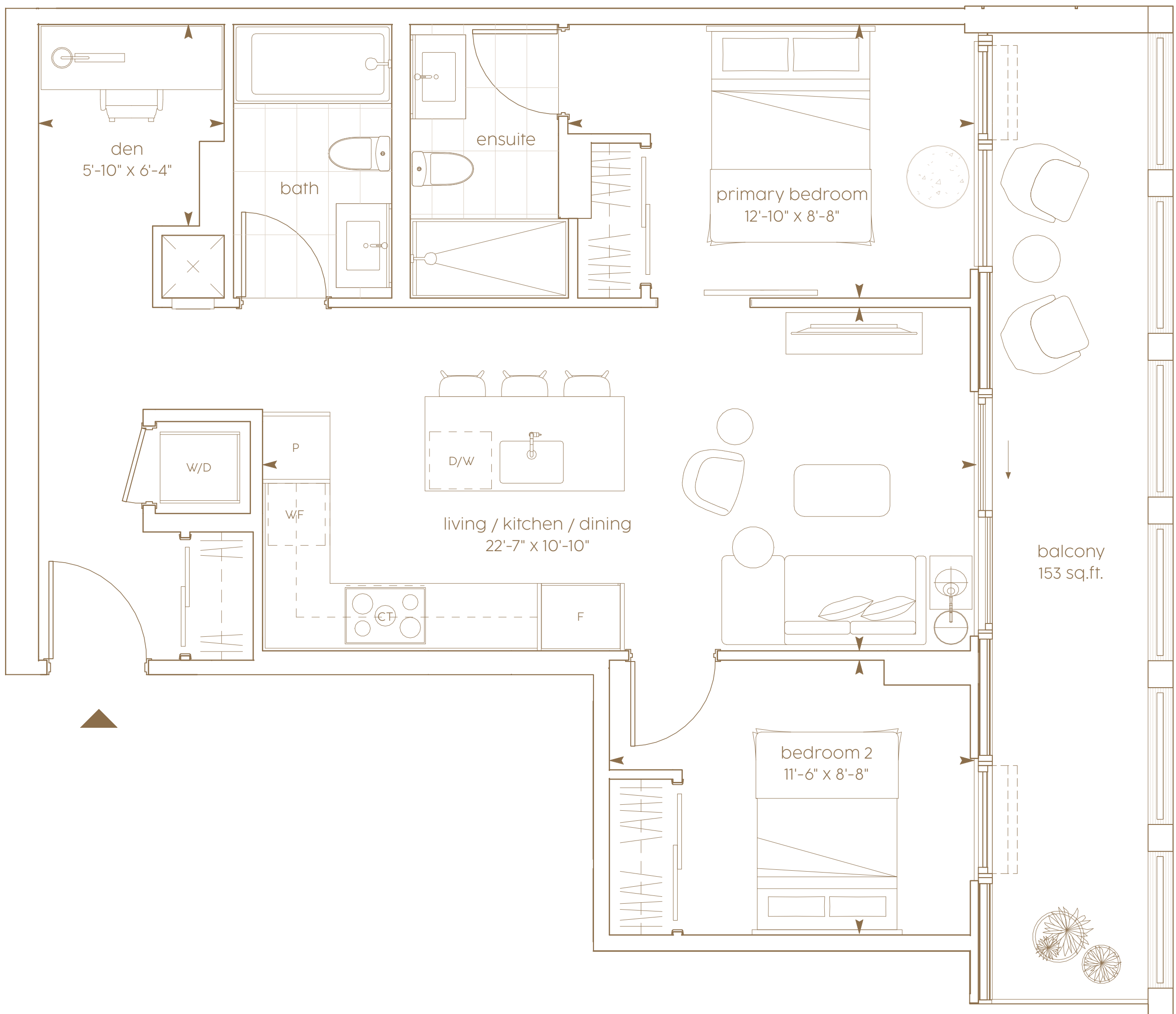
WALMER

2 bedroom + den

interior living area | 753 sf

outdoor living area | 153 sf

total living area | 906 sf



level 25-lower penthouse



*Prices, sizes and specifications subject to change without notice. E.&O.E. The dimensions shown of this plan are approximate and subject to normal construction variances. Actual useable floor space within the unit may vary from any stated floor areas or dimensions on this plan. Furniture is displayed for illustration purposes only and does not necessarily reflect the electrical, cable or internet outlets. Suites are sold unfurnished. For more information on the method used for calculating the floor area of any unit, reference should be made to Home Construction Regulatory Authority ("HCRA") Directive.

