

**INDIGO** (SM-01)  
ELEVATION B, 1,502 SQ. FT.



**INDIGO** (SM-01)  
ELEVATION C, 1,488 SQ. FT.



**It's your home. And, we take pride in it.**

Since 1977, Geranium has designed and built homes with sensitivity and respect for the environment, the local neighbourhood, and the families who will call them home. That's just one reason why we've won hundreds of homebuilding awards for craftsmanship and care since our founding in 1977. It's also the reason why we are the proud recipients of the 2021 Durham Region Builder of the Year Award.

**2021 DRHBA BUILDER OF THE YEAR**



Courts of Canterbury  
in Port Perry

Builder reserves the right to substitute materials for equal or better quality. Prices, any lot premiums, features and any applicable incentives referred to are subject to change without notice. Lot sizes, square footages and room dimensions are approximate and are subject to change without notice. Please refer to Schedule 'B' and 'C' of the Agreement of Purchase and Sale for full details. Illustrations and photographs included may be upgrade features and/or Artist's concept. 09/2021. E.&O.E.

[geranium.com](http://geranium.com)



**MIDHURST  
VALLEY**



**INDIGO** (SM-01)  
ELEVATION A, 1,488 SQ. FT.



**INDIGO** (SM-01)  
25' SEMI DETACHED

ELEVATION A, 1,488 SQ. FT.  
ELEVATION B, 1,502 SQ. FT.  
ELEVATION C, 1,488 SQ. FT.





# INDIGO (SM-01)

25' SEMI DETACHED, ELEVATIONS A, B & C



**INDIGO (SM-01)**  
ELEVATION A, 1,488 SQ. FT.

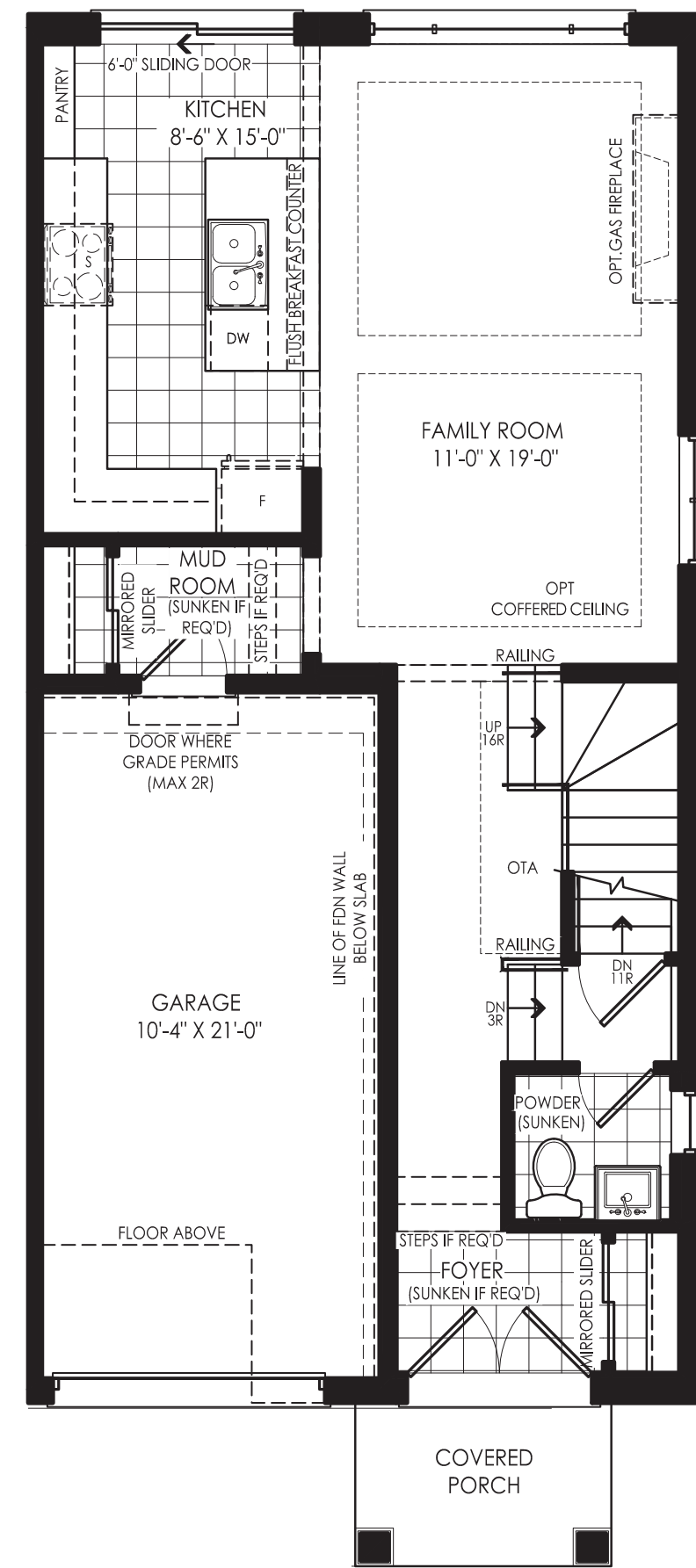


**INDIGO (SM-01)**  
ELEVATION B, 1,502 SQ. FT.

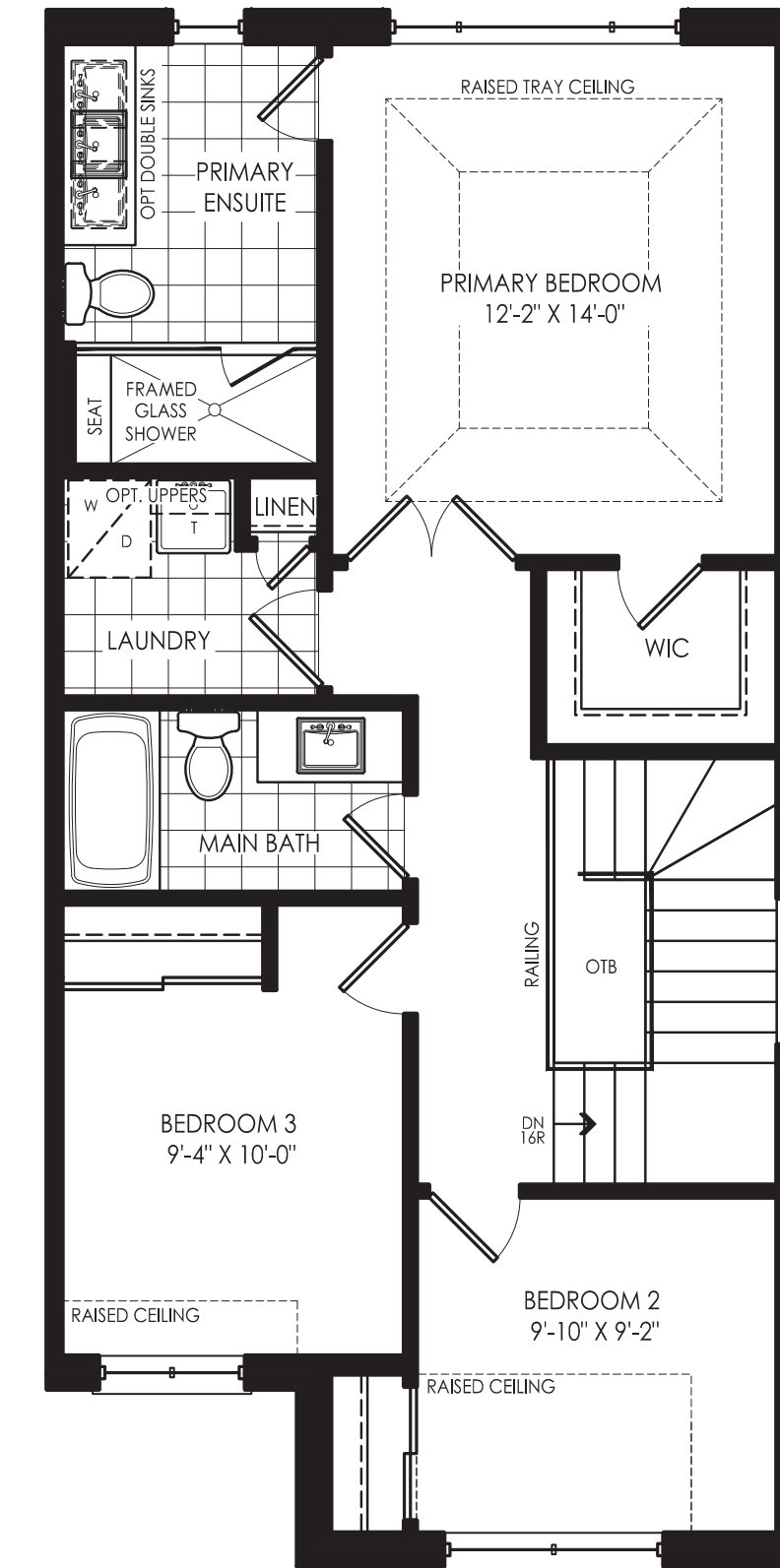


**INDIGO (SM-01)**  
ELEVATION C, 1,488 SQ. FT.

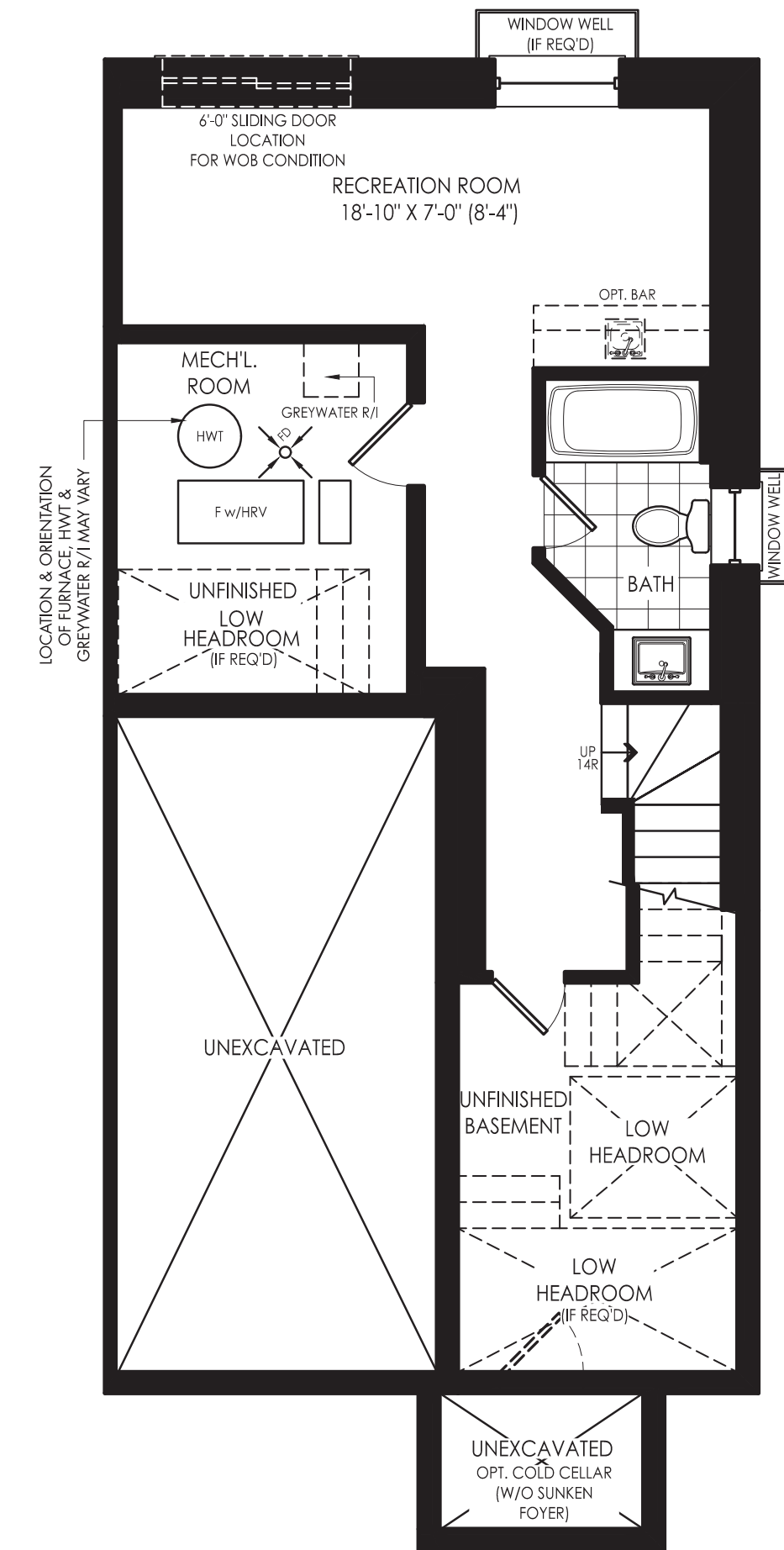
### GROUND FLOOR → ELEVATION A



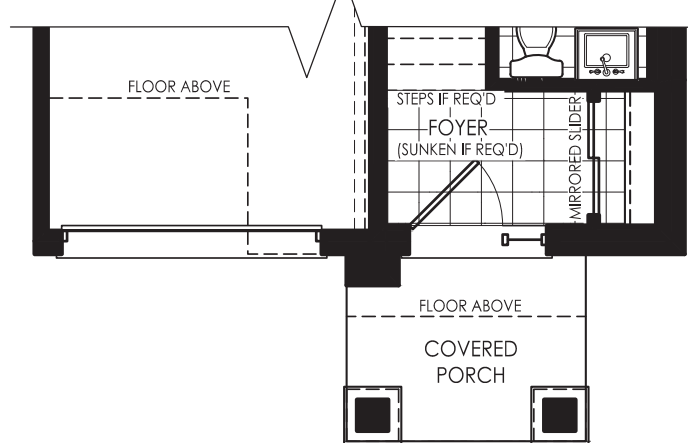
### SECOND FLOOR → ELEVATION A



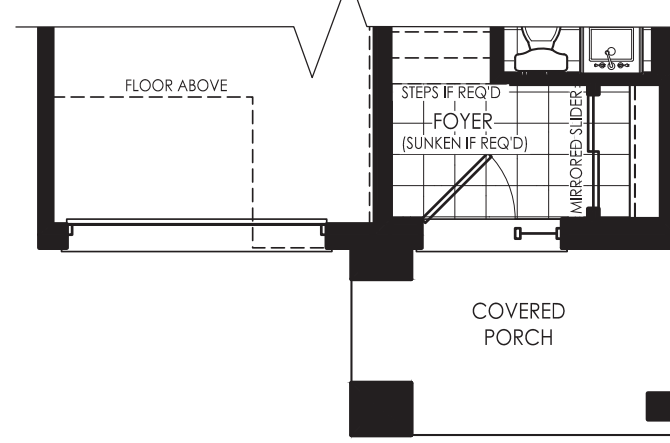
### OPTIONAL FINISHED BASEMENT → ELEVATION A 368 SQ. FT.



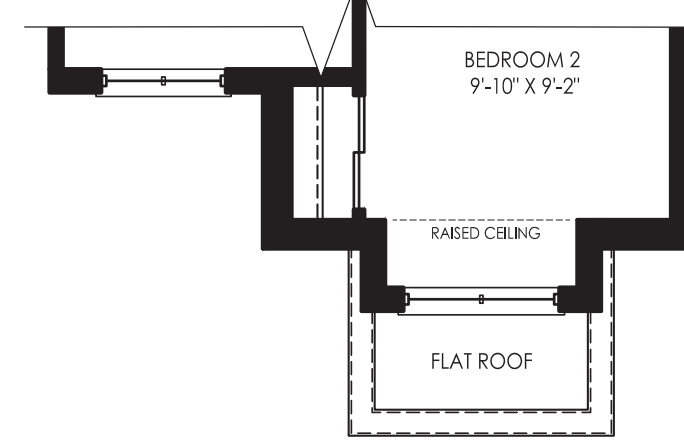
### GROUND FLOOR ELEVATION B



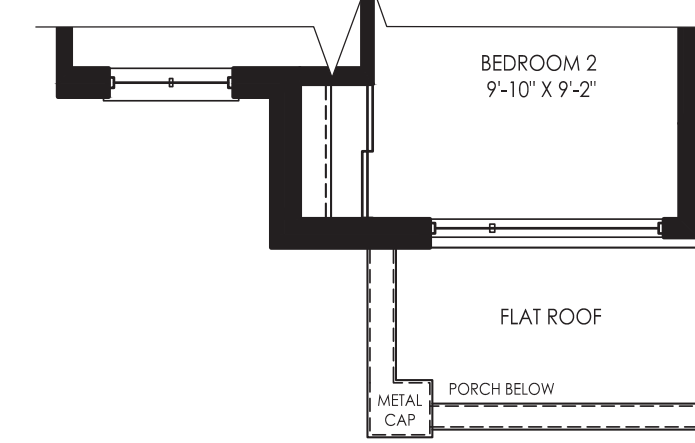
### GROUND FLOOR ELEVATION C



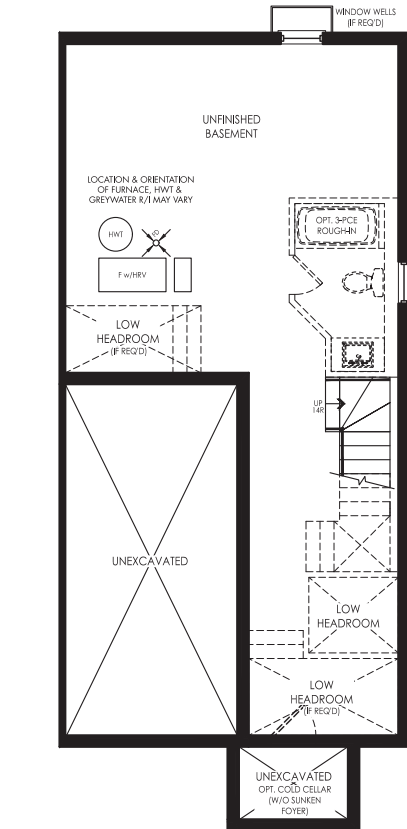
### SECOND FLOOR ELEVATION B



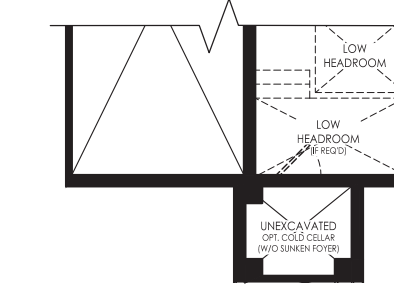
### SECOND FLOOR ELEVATION C



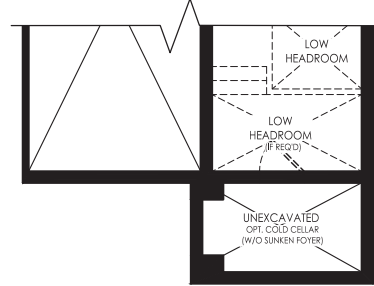
### UNFINISHED BASEMENT ELEVATION A



### UNFINISHED BASEMENT ELEVATION B



### UNFINISHED BASEMENT ELEVATION C



**SAGE** (SM-02)  
ELEVATION B, 1,691 SQ. FT.  
ELEVATION B-1, 1,673 SQ. FT.



**SAGE** (SM-02)  
ELEVATION C, 1,686 SQ. FT.



**It's your home. And, we take pride in it.**

Since 1977, Geranium has designed and built homes with sensitivity and respect for the environment, the local neighbourhood, and the families who will call them home. That's just one reason why we've won hundreds of homebuilding awards for craftsmanship and care since our founding in 1977. It's also the reason why we are the proud recipients of the 2021 Durham Region Builder of the Year Award.

**2021 DRHBA BUILDER OF THE YEAR**



Courts of Canterbury  
in Port Perry



**MIDHURST  
VALLEY**



**SAGE** (SM-02)  
ELEVATION A, 1,693 SQ. FT.  
ELEVATION A-1, 1,676 SQ. FT.



**SAGE** (SM-02)  
**25' SEMI DETACHED**

- ELEVATION A, 1,693 SQ. FT.
- ELEVATION A-1, 1,676 SQ. FT.
- ELEVATION B, 1,691 SQ. FT.
- ELEVATION B-1, 1,673 SQ. FT.
- ELEVATION C, 1,686 SQ. FT.

Builder reserves the right to substitute materials for equal or better quality. Prices, any lot premiums, features and any applicable incentives referred to are subject to change without notice. Lot sizes, square footages and room dimensions are approximate and are subject to change without notice. Please refer to Schedule 'B' and 'C' of the Agreement of Purchase and Sale for full details. Illustrations and photographs included may be upgrade features and/or Artist's concept. 09/2021. E.&O.E.

[geranium.com](http://geranium.com)





**SAGE (SM-02)**  
SEMI DETACHED, ELEVATIONS A, B & C



**SAGE (SM-02)**  
ELEVATION A, 1,693 SQ. FT.  
ELEVATION A-1, 1,676 SQ. FT.

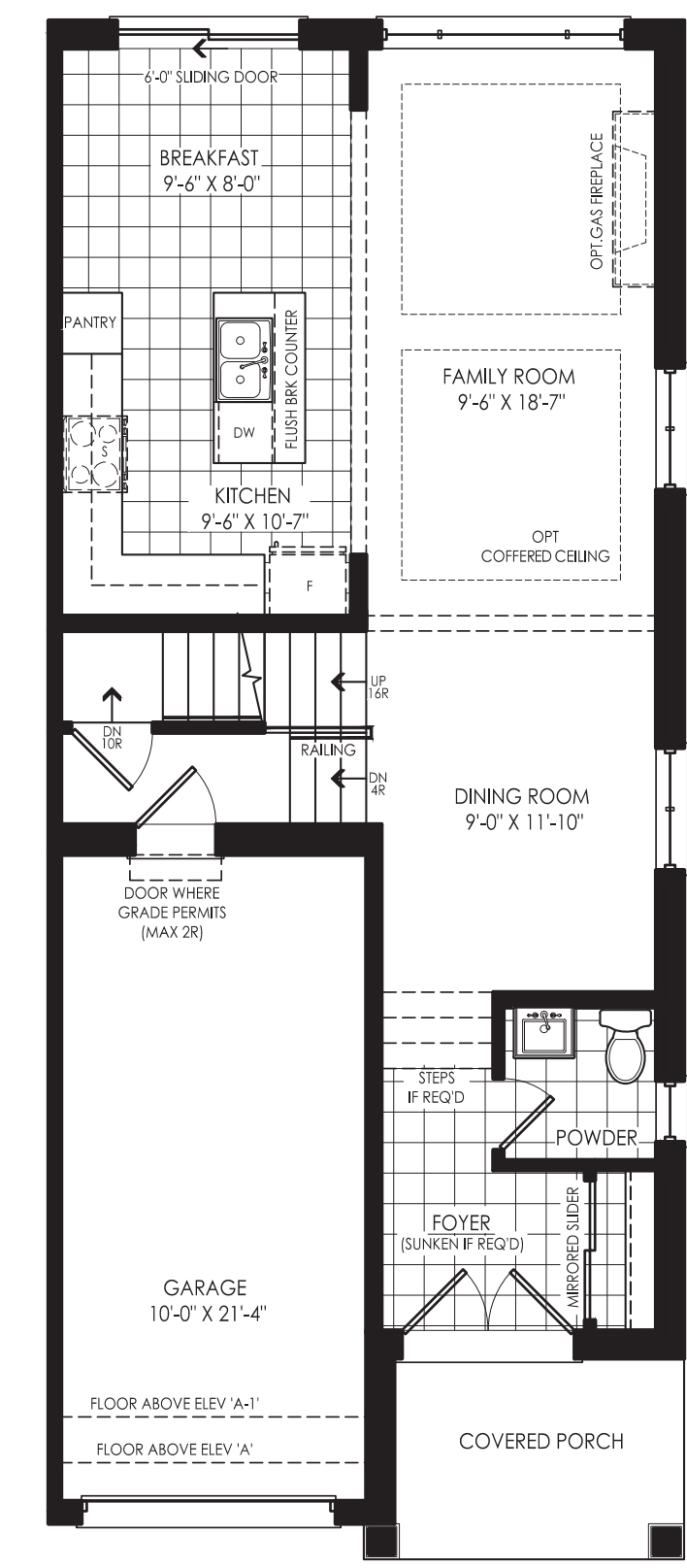


**SAGE (SM-02)**  
ELEVATION B, 1,691 SQ. FT.  
ELEVATION B-1, 1,673 SQ. FT.

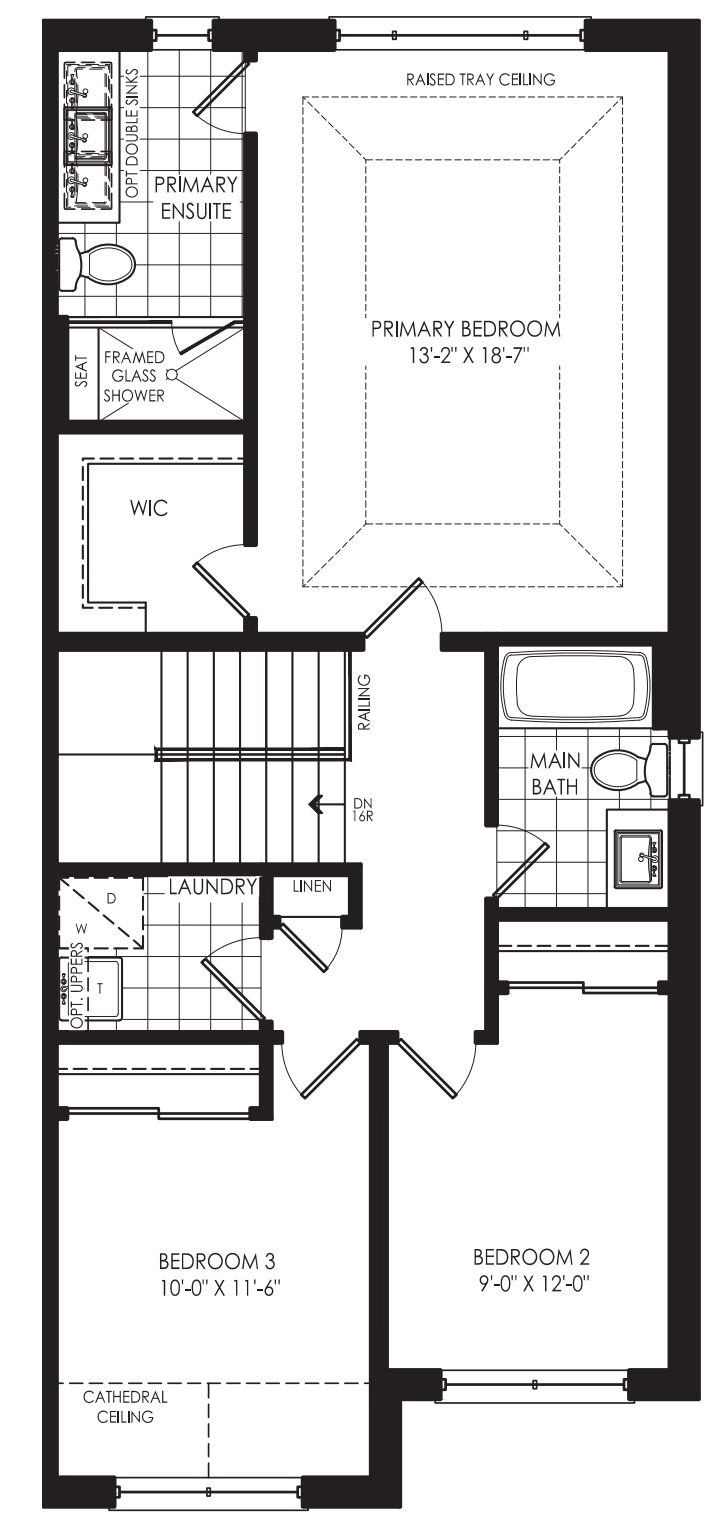


**SAGE (SM-02)**  
ELEVATION C, 1,686 SQ. FT.

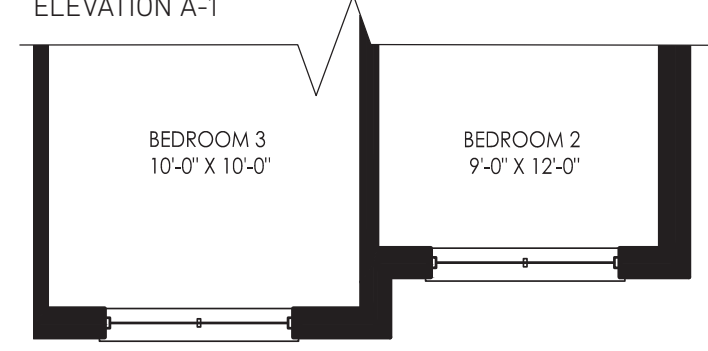
**GROUND FLOOR →**  
ELEVATION A & A-1



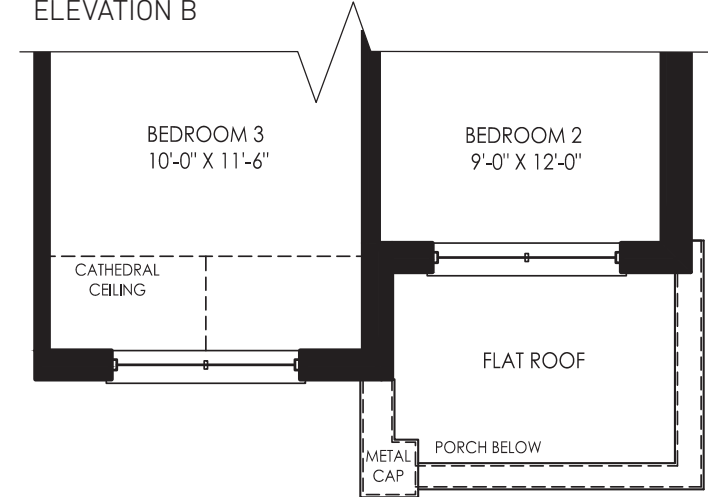
**SECOND FLOOR →**  
ELEVATION A



**SECOND FLOOR**  
ELEVATION A-1



**SECOND FLOOR**  
ELEVATION B

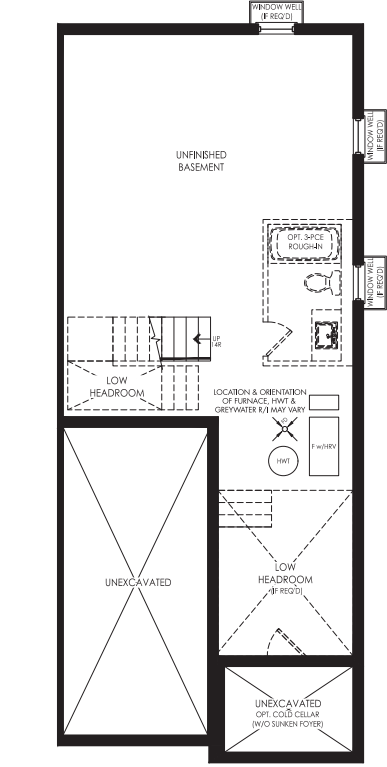
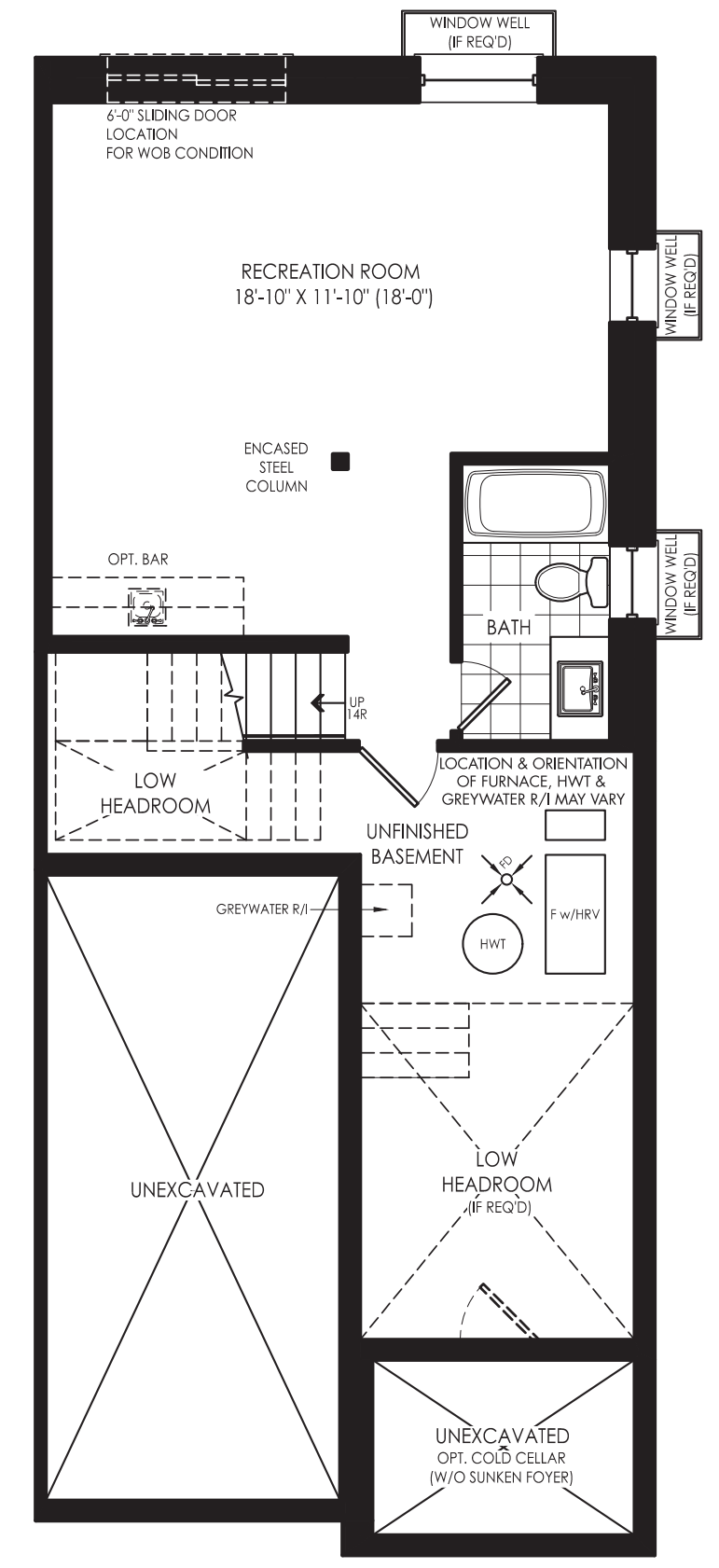


**OPTIONAL FINISHED BASEMENT →**  
ELEVATION A & A-1  
451 SQ. FT.

**OPTIONAL FINISHED BASEMENT**  
ELEVATION B

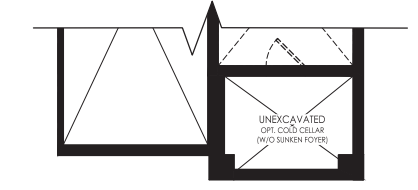
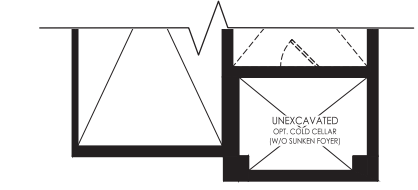
**OPTIONAL FINISHED BASEMENT**  
ELEVATION C

**UNFINISHED BASEMENT**  
ELEVATION A & A-1



**UNFINISHED BASEMENT**  
ELEVATION B & B-1

**UNFINISHED BASEMENT**  
ELEVATION C



**GERANIUM**  
From the ground up™

**GINGER** (SM-03)  
ELEVATION B, 1,877 SQ. FT.  
ELEVATION B-1, 1,920 SQ. FT.



**GINGER** (SM-03)  
ELEVATION C, 1,890 SQ. FT.  
ELEVATION C-1, 1,878 SQ. FT.



**GERANIUM**  
From the ground up™

### It's your home. And, we take pride in it.

Since 1977, Geranium has designed and built homes with sensitivity and respect for the environment, the local neighbourhood, and the families who will call them home. That's just one reason why we've won hundreds of homebuilding awards for craftsmanship and care since our founding in 1977. It's also the reason why we are the proud recipients of the 2021 Durham Region Builder of the Year Award.

### 2021 DRHBA BUILDER OF THE YEAR



Courts of Canterbury  
in Port Perry

## GINGER (SM-03) 25' SEMI DETACHED

- ELEVATION A, 1,880 SQ. FT.
- ELEVATION A-1, 1,895 SQ. FT.
- ELEVATION B, 1,877 SQ. FT.
- ELEVATION B-1, 1,920 SQ. FT.
- ELEVATION C, 1,890 SQ. FT.
- ELEVATION C-1, 1,878 SQ. FT.

Builder reserves the right to substitute materials for equal or better quality. Prices, any lot premiums, features and any applicable incentives referred to are subject to change without notice. Lot sizes, square footages and room dimensions are approximate and are subject to change without notice. Please refer to Schedule 'B' and 'C' of the Agreement of Purchase and Sale for full details. Illustrations and photographs included may be upgrade features and/or Artist's concept. 09/2021. E.&O.E.

[geranium.com](http://geranium.com)



**MIDHURST  
VALLEY**

**GERANIUM**  
From the ground up™

**GINGER** (SM-03)  
ELEVATION A, 1,880 SQ. FT.  
ELEVATION A-1, 1,895 SQ. FT.



**GERANIUM**  
From the ground up™



# GINGER (SM-03)

25' SEMI DETACHED, ELEVATIONS A, B & C



**GINGER (SM-03)**  
ELEVATION A, 1,880 SQ. FT.  
ELEVATION A-1, 1,895 SQ. FT.

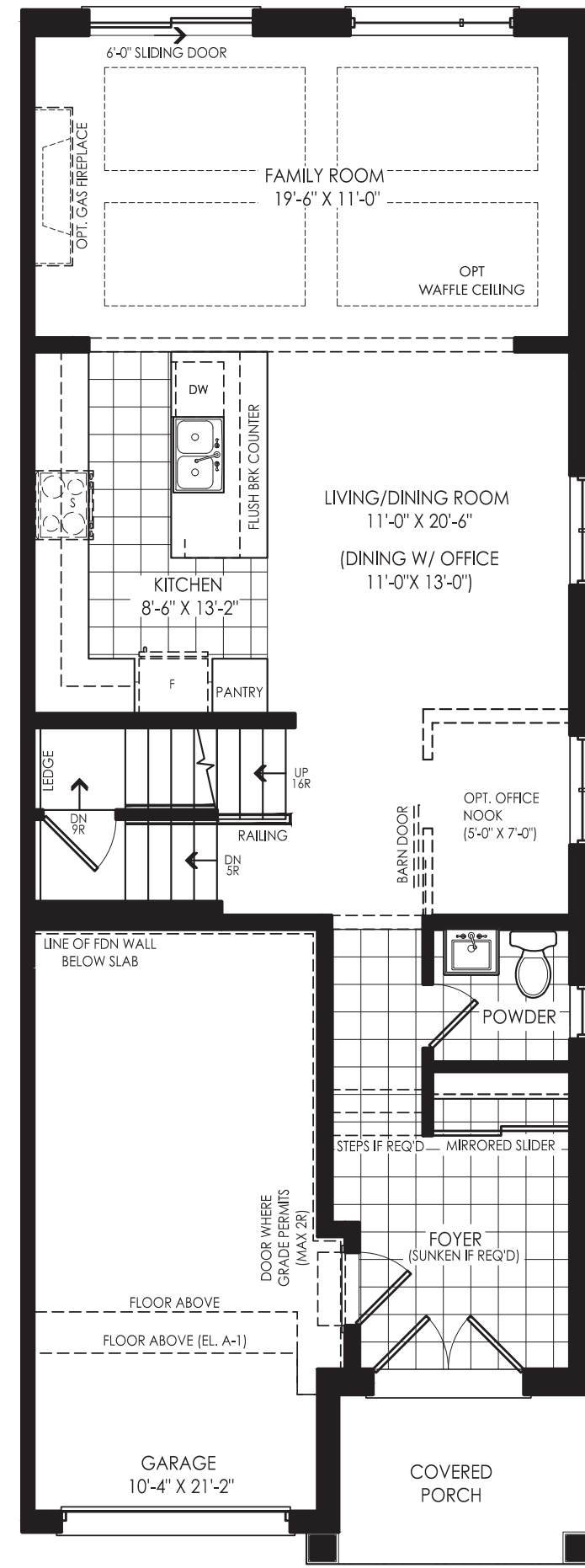


**GINGER (SM-03)**  
ELEVATION B, 1,877 SQ. FT.  
ELEVATION B-1, 1,920 SQ. FT.

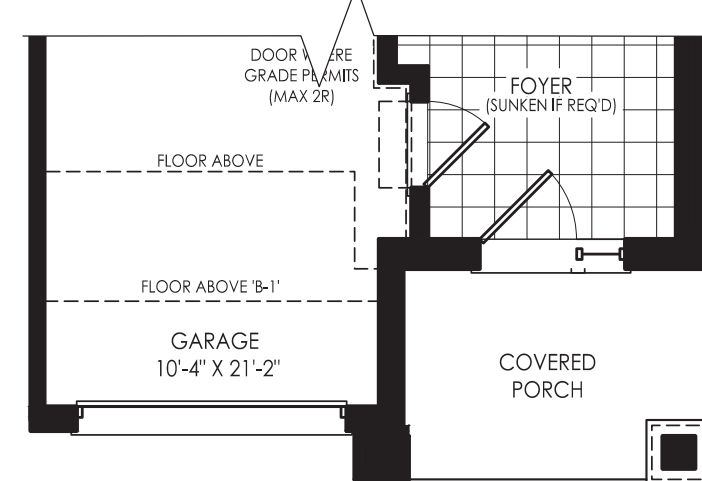


**GINGER (SM-03)**  
ELEVATION C, 1,890 SQ. FT.  
ELEVATION C, 1,878 SQ. FT.

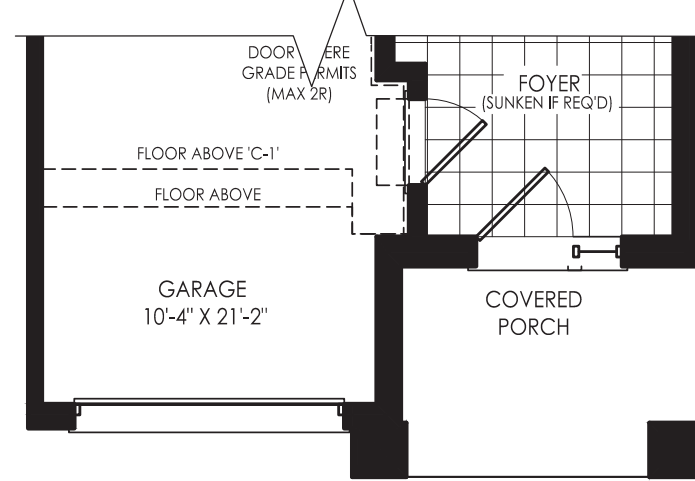
**GROUND FLOOR →**  
ELEVATION A & A-1



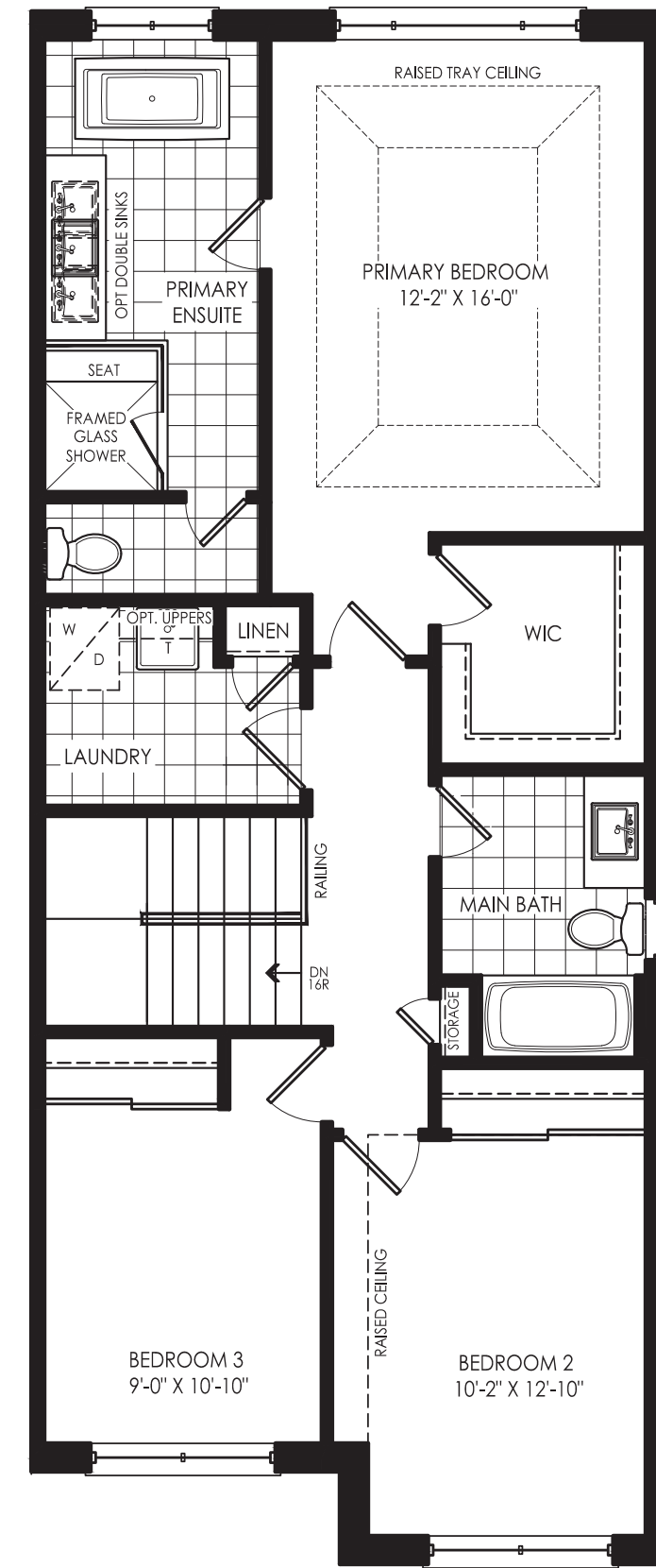
**GROUND FLOOR**  
ELEVATION B & B-1



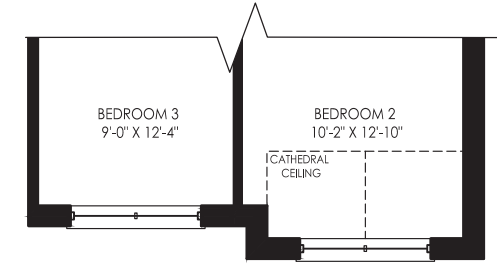
**GROUND FLOOR**  
ELEVATION C



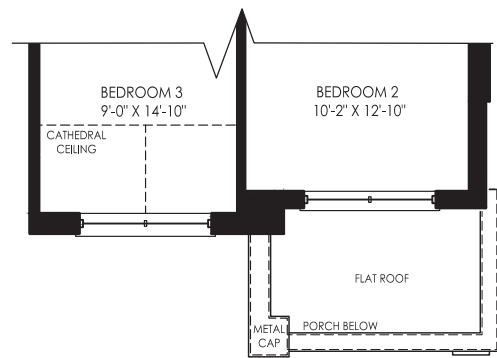
**SECOND FLOOR →**  
ELEVATION A



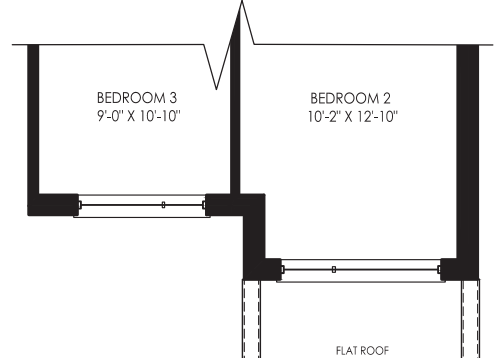
**SECOND FLOOR**  
ELEVATION A-1



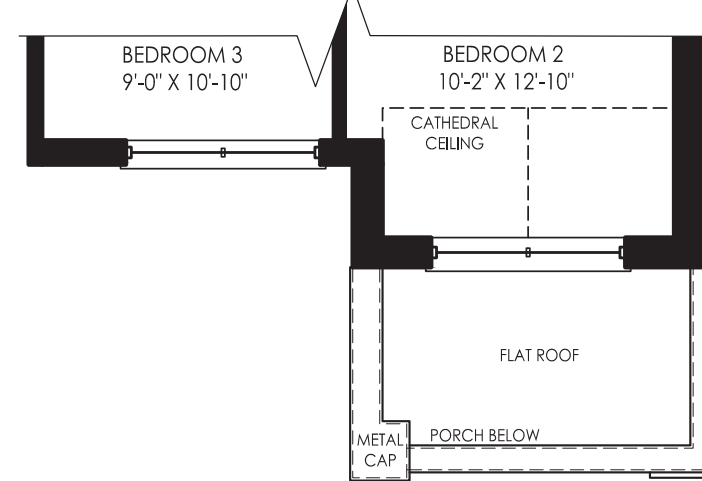
**SECOND FLOOR**  
ELEVATION B-1



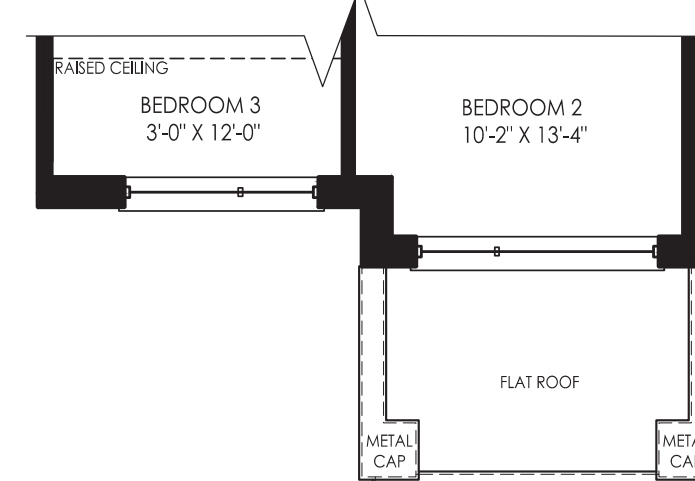
**SECOND FLOOR**  
ELEVATION C-1



**SECOND FLOOR**  
ELEVATION B

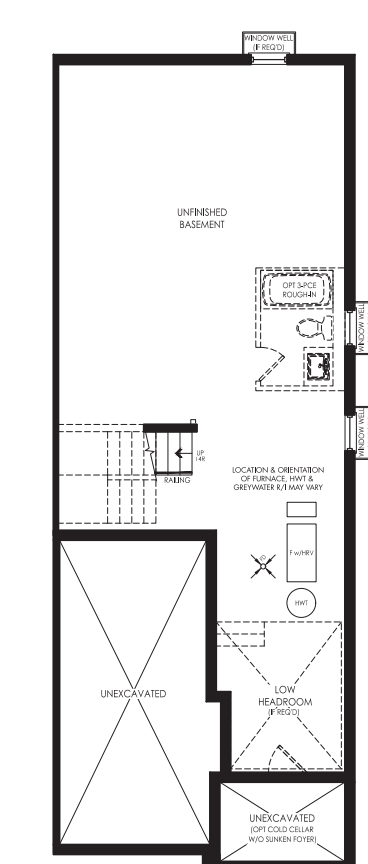


**SECOND FLOOR**  
ELEVATION C

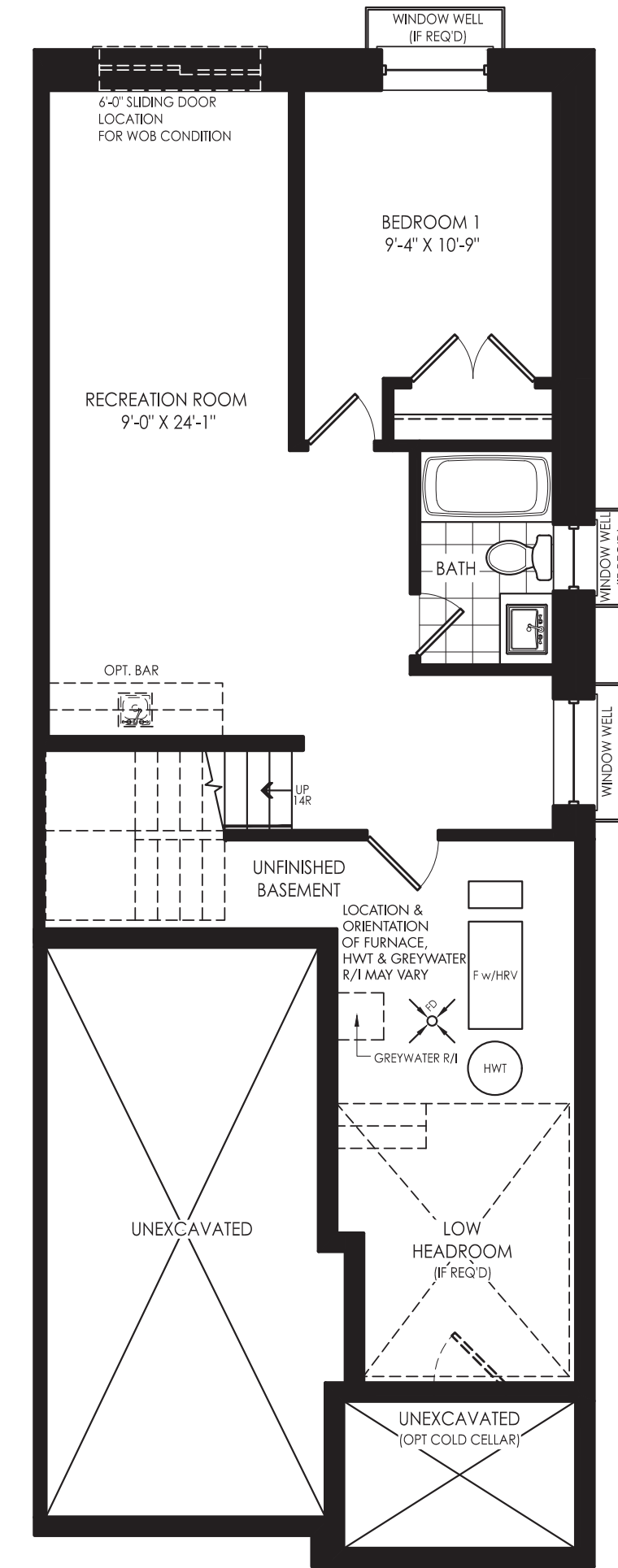
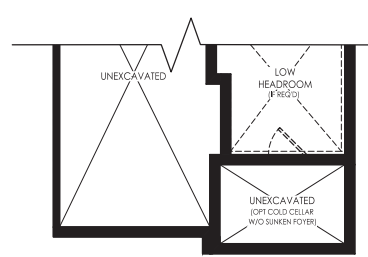


**OPTIONAL FINISHED BASEMENT →**  
ELEVATION A  
580 SQ. FT.

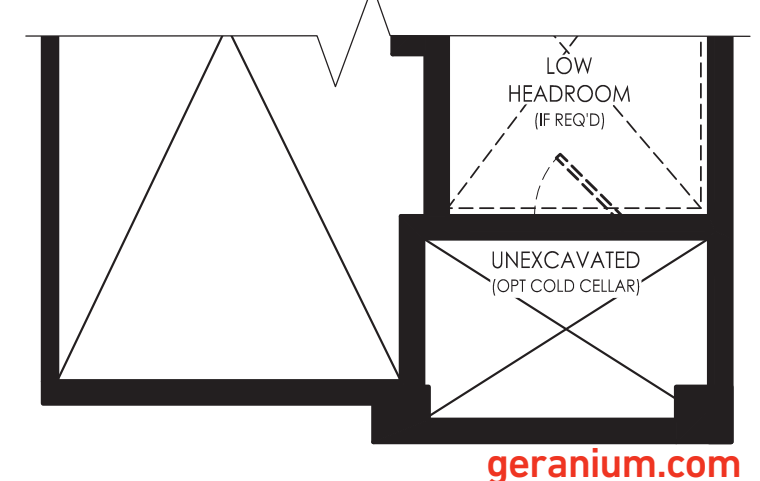
**UNFINISHED BASEMENT**  
ELEVATION A & A-1



**UNFINISHED BASEMENT**  
ELEVATION B, B-1, C & C-1



**OPTIONAL FINISHED BASEMENT**  
ELEVATION B, B-1, C & C-1



**VIOLET** (SM-04)  
ELEVATION B, 1,982 SQ. FT.  
ELEVATION B-1, 2,000 SQ. FT.



**VIOLET** (SM-04)  
ELEVATION C, 1,982 SQ. FT.  
ELEVATION C-1, 1,992 SQ. FT.



**It's your home. And, we take pride in it.**

Since 1977, Geranium has designed and built homes with sensitivity and respect for the environment, the local neighbourhood, and the families who will call them home. That's just one reason why we've won hundreds of homebuilding awards for craftsmanship and care since our founding in 1977. It's also the reason why we are the proud recipients of the 2021 Durham Region Builder of the Year Award.

**2021 DRHBA BUILDER OF THE YEAR**



Courts of Canterbury  
in Port Perry

Builder reserves the right to substitute materials for equal or better quality. Prices, any lot premiums, features and any applicable incentives referred to are subject to change without notice. Lot sizes, square footages and room dimensions are approximate and are subject to change without notice. Please refer to Schedule 'B' and 'C' of the Agreement of Purchase and Sale for full details. Illustrations and photographs included may be upgrade features and/or Artist's concept. 09/2021. E.&O.E.

[geranium.com](http://geranium.com)



**MIDHURST  
VALLEY**



**VIOLET** (SM-04)  
ELEVATION A, 1,979 SQ. FT.  
ELEVATION A-1, 2,000 SQ. FT.



**VIOLET** (SM-04)  
25' SEMI DETACHED

- ELEVATION A, 1,979 SQ. FT.
- ELEVATION A-1, 2,000 SQ. FT.
- ELEVATION B, 1,982 SQ. FT.
- ELEVATION B-1, 2,000 SQ. FT.
- ELEVATION C, 1,982 SQ. FT.
- ELEVATION C-1, 1,992 SQ. FT.





# VIOLET (SM-04)

25' SEMI DETACHED, ELEVATIONS A, B & C



**VIOLET (SM-04)**  
ELEVATION A, 1,979 SQ. FT.  
ELEVATION A-1, 2,000 SQ. FT.



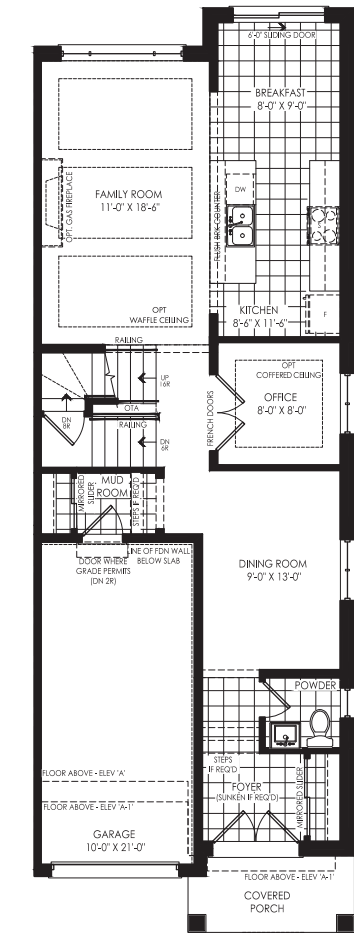
**VIOLET (SM-04)**  
ELEVATION B, 1,982 SQ. FT.  
ELEVATION B-1, 2,000 SQ. FT.



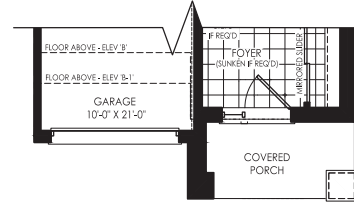
**VIOLET (SM-04)**  
ELEVATION C, 1,982 SQ. FT.  
ELEVATION C-1, 1,992 SQ. FT.

### GROUND FLOOR → ELEVATION A & A-1

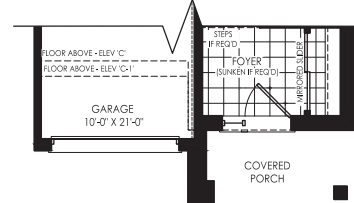
### OPTIONAL GROUND FLOOR WITH OFFICE ELEVATION A & A-1



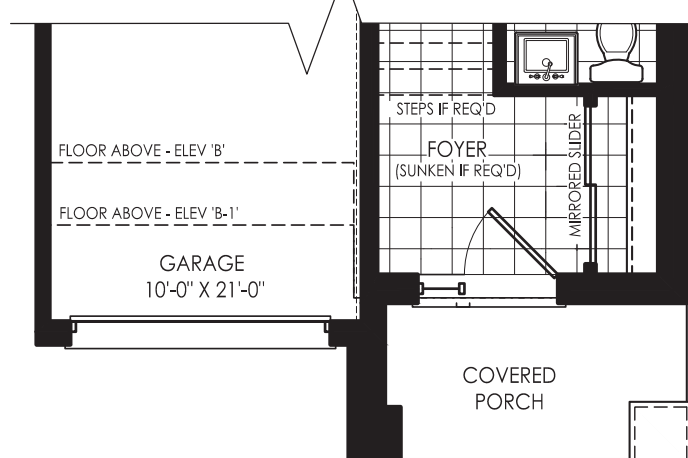
### OPTIONAL GROUND FLOOR WITH OFFICE ELEVATION B & B-1



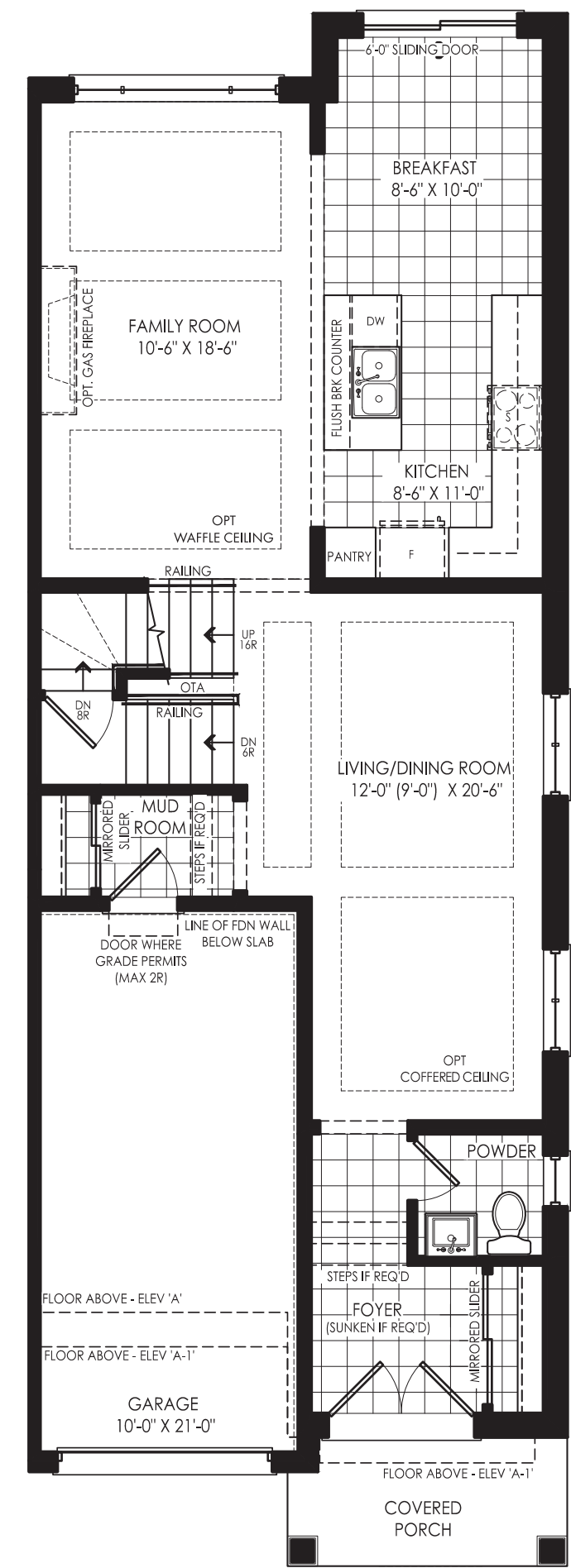
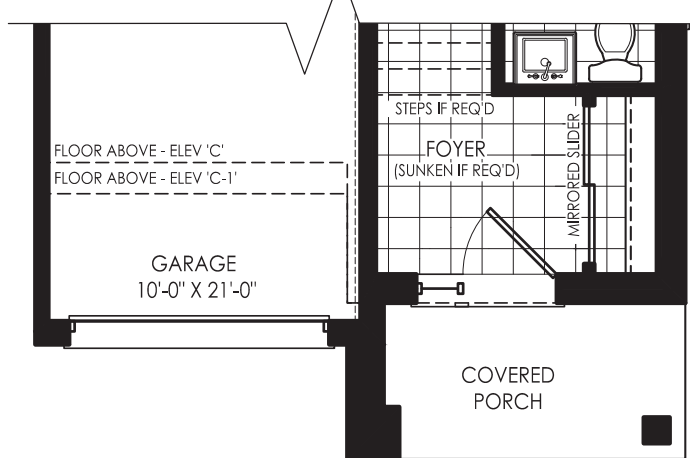
### OPTIONAL GROUND FLOOR WITH OFFICE ELEVATION C & C-1



### GROUND FLOOR ELEVATION B & B-1

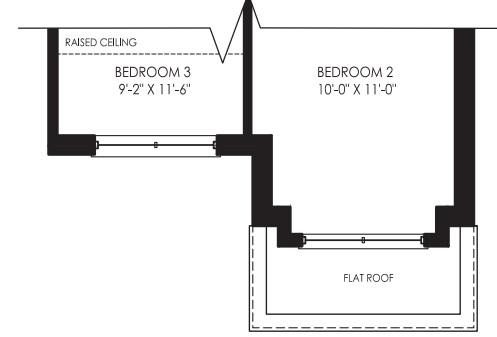


### GROUND FLOOR ELEVATION C & C-1

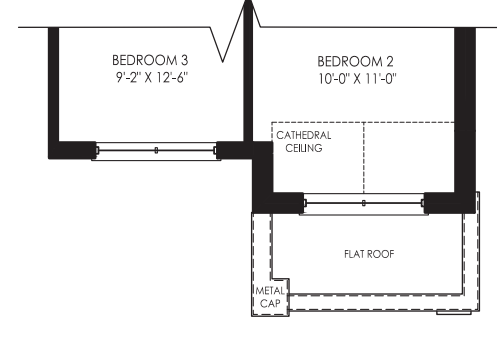


### SECOND FLOOR → ELEVATION A

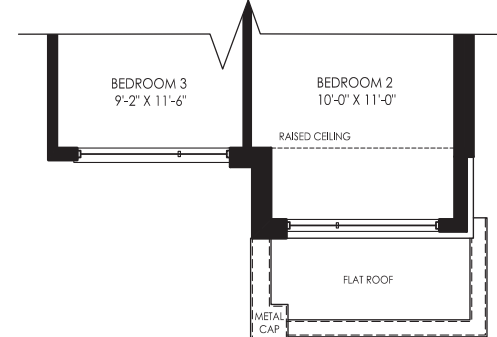
### SECOND FLOOR ELEVATION A-1



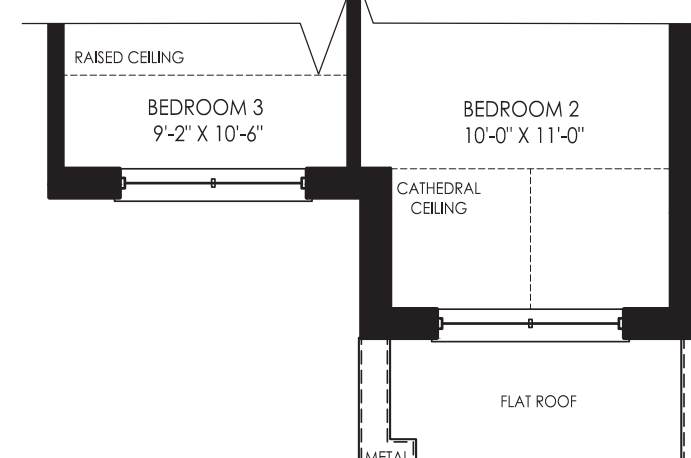
### SECOND FLOOR ELEVATION B-1



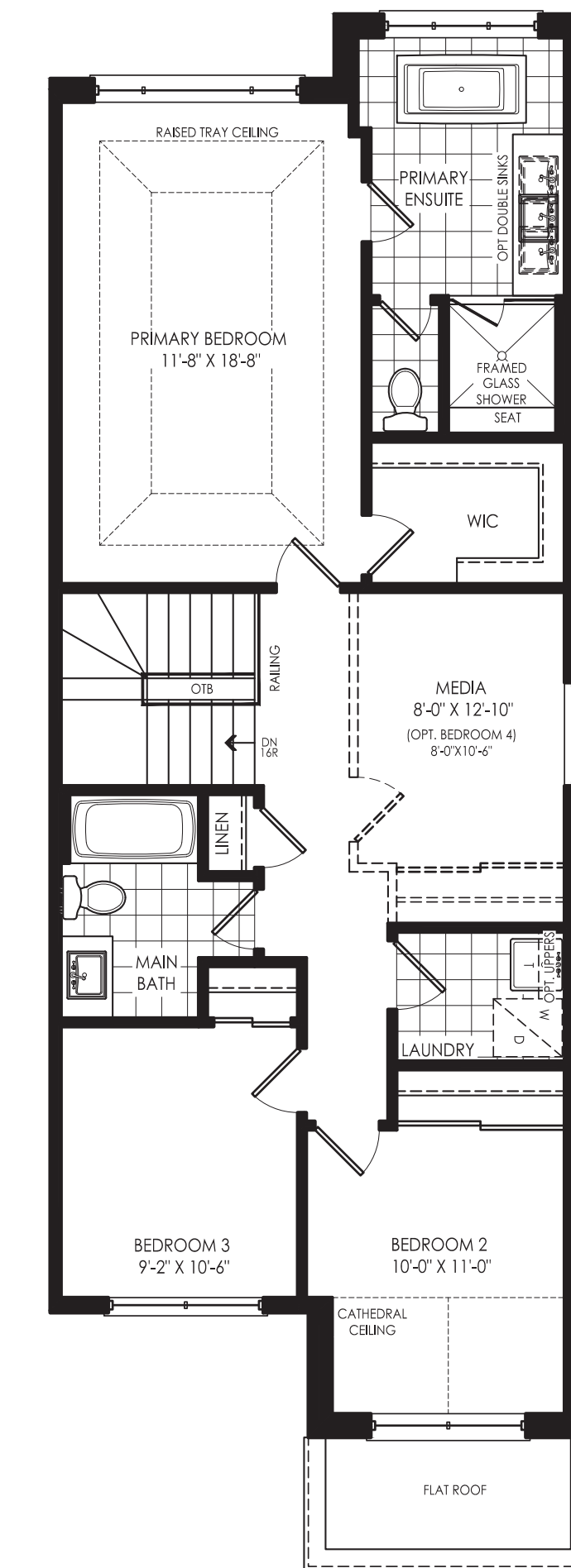
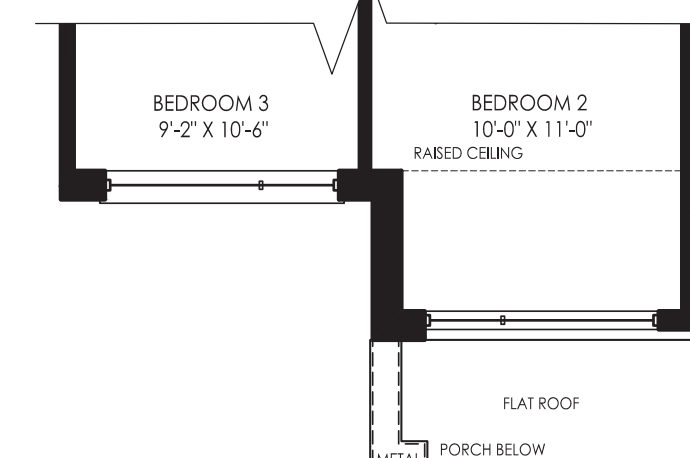
### SECOND FLOOR ELEVATION C-1



### SECOND FLOOR ELEVATION B

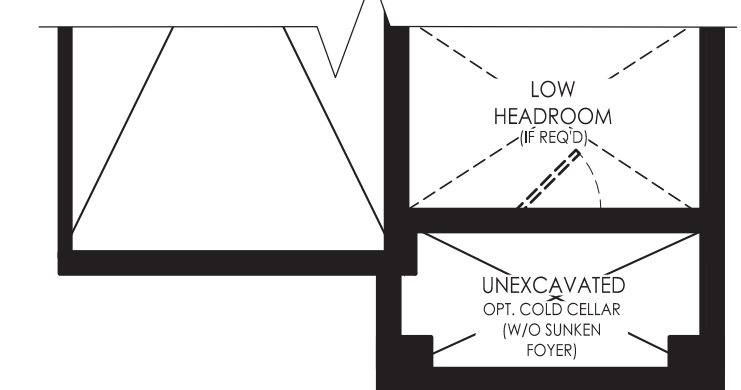


### SECOND FLOOR ELEVATION C

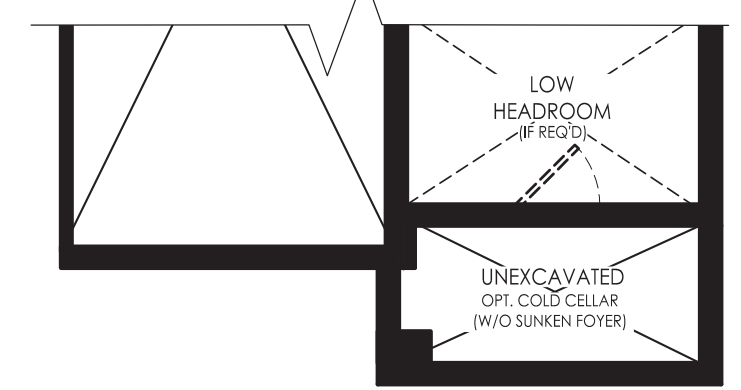


### OPTIONAL FINISHED BASEMENT → ELEVATION A 550 SQ. FT.

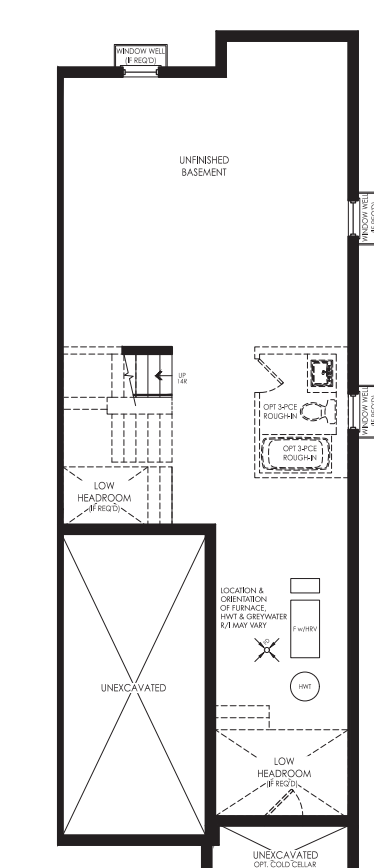
### OPTIONAL FINISHED BASEMENT ELEVATION B & B-1



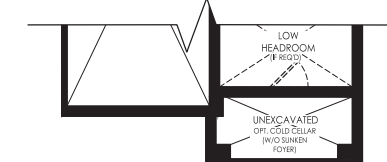
### OPTIONAL FINISHED BASEMENT ELEVATION C & C-1



### UNFINISHED BASEMENT ELEVATION A & A-1



### UNFINISHED BASEMENT ELEVATION B & B-1



### UNFINISHED BASEMENT ELEVATION C & C-1

