



# Morningside TRAIL

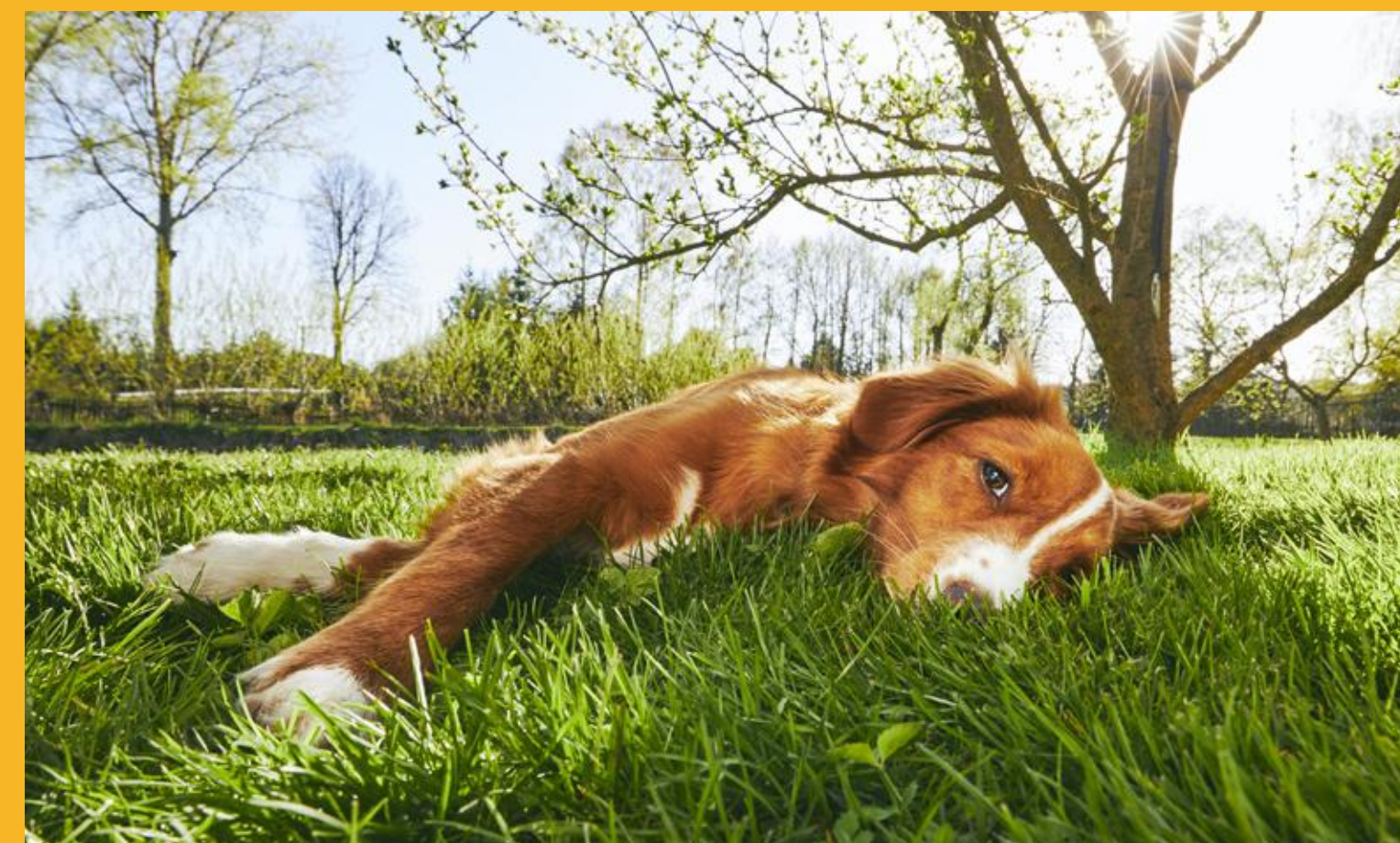
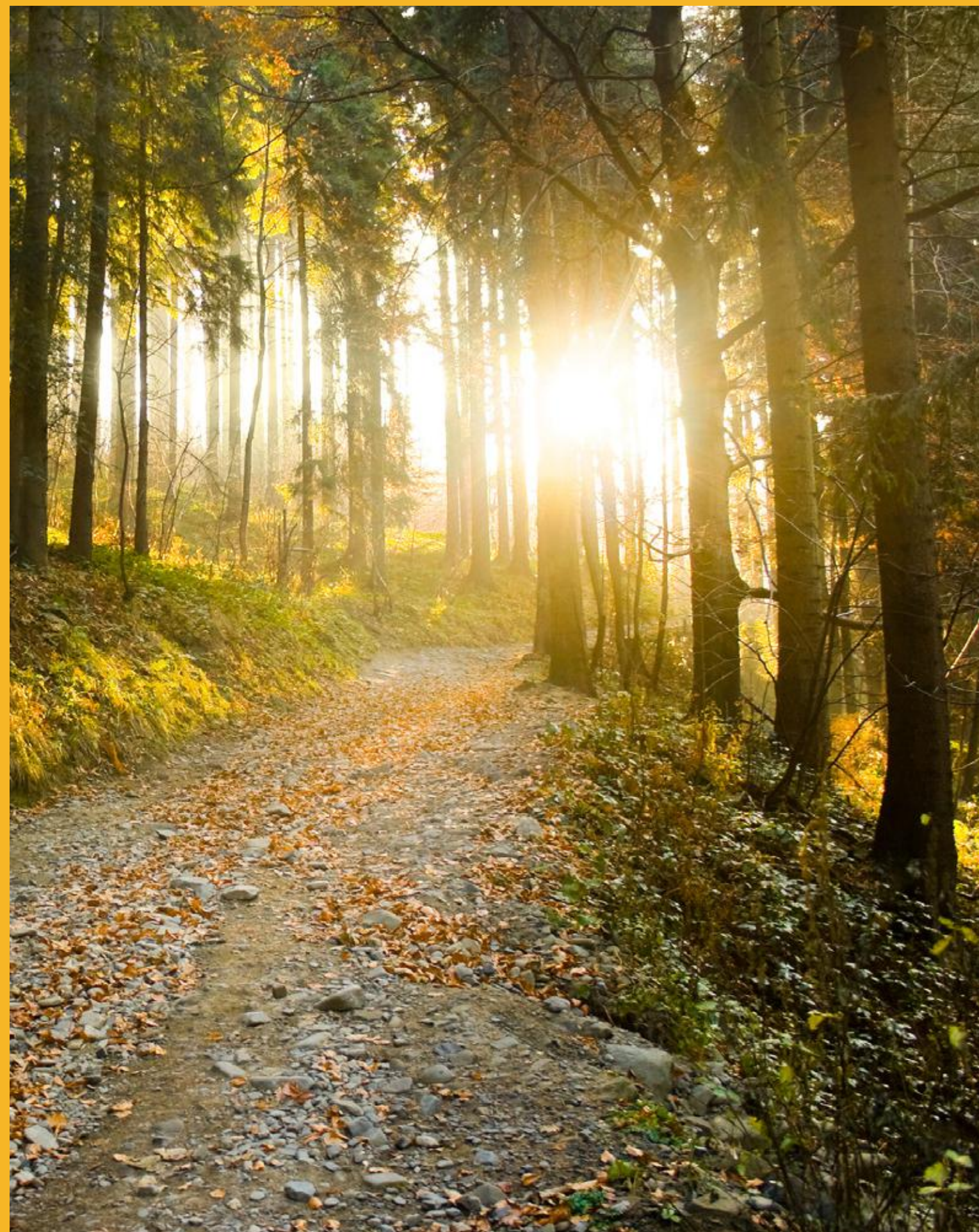
LINDSAY

Inspired to  
Live & Grow



# THIS IS WHERE YOU GROW.

Inspired by the surrounding lush trails and landscapes, Morningside Trail offers you a community of homes inspired by growth and life. With our collection of semi-detached and single-detached homes designed with family-inspired living in mind, Morningside Trail offers you a home to live and grow, as life intended.





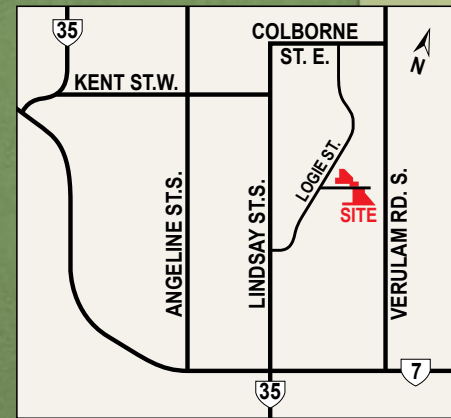
# THIS IS WHERE YOU LIVE.

Find yourself exploring the nearby Ken Reid Conservation Area or play a round at the Lindsay Golf and Country Club. Surrounding the Morningside Trail community is a variety of essentials, shopping, markets and community events you can experience throughout the year.

Life in Lindsay offers you a quaint small town feel but surrounded by everything you could ever need to live and grow.





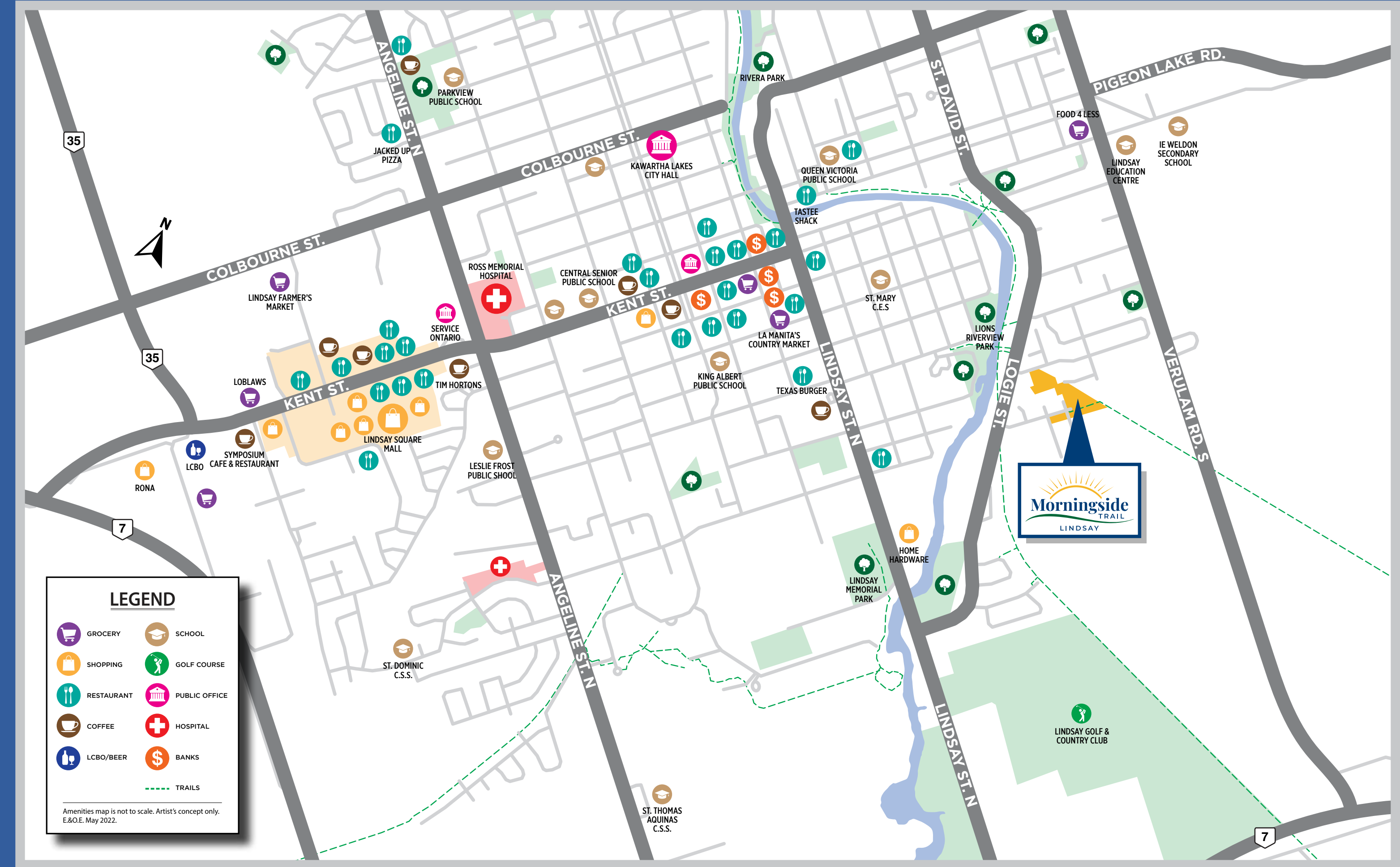


## Site Plan

### LEGEND

- 28' Semi-Detached
- 32' Singles
- 36' Singles
- 50' Singles
- 65' Singles

Site plan is not to scale. Artist's concept only.  
E.&O.E. May 2022.







---

# THE 50' SERIES

---





**2473** SQ.FT.  
ELEVATION A

# The Cambridge

50 FT.

SINGLES



# The Cambridge

**2518** SQ.FT.  
ELEVATION B



50 FT.

SINGLES

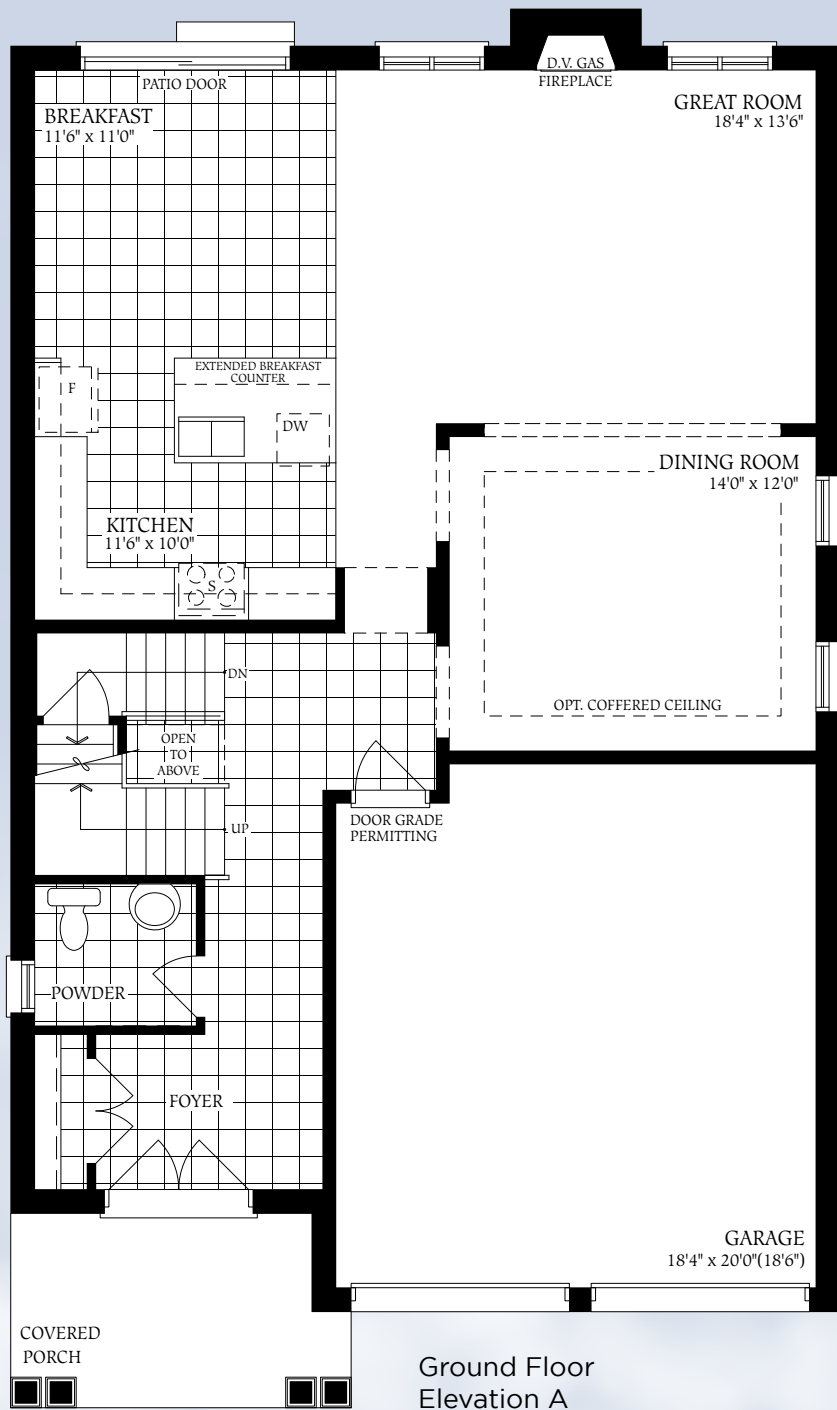


Artist's concept.

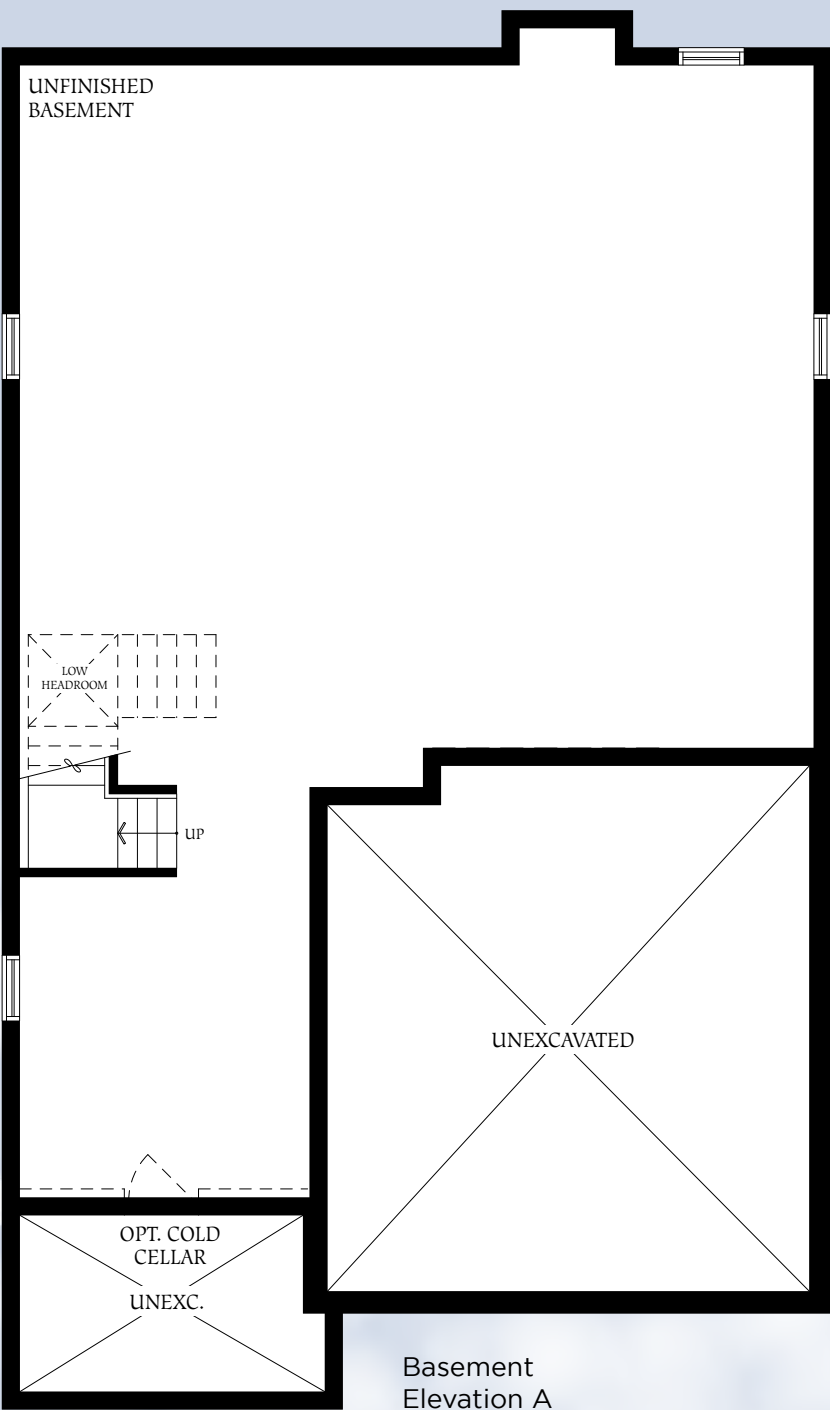
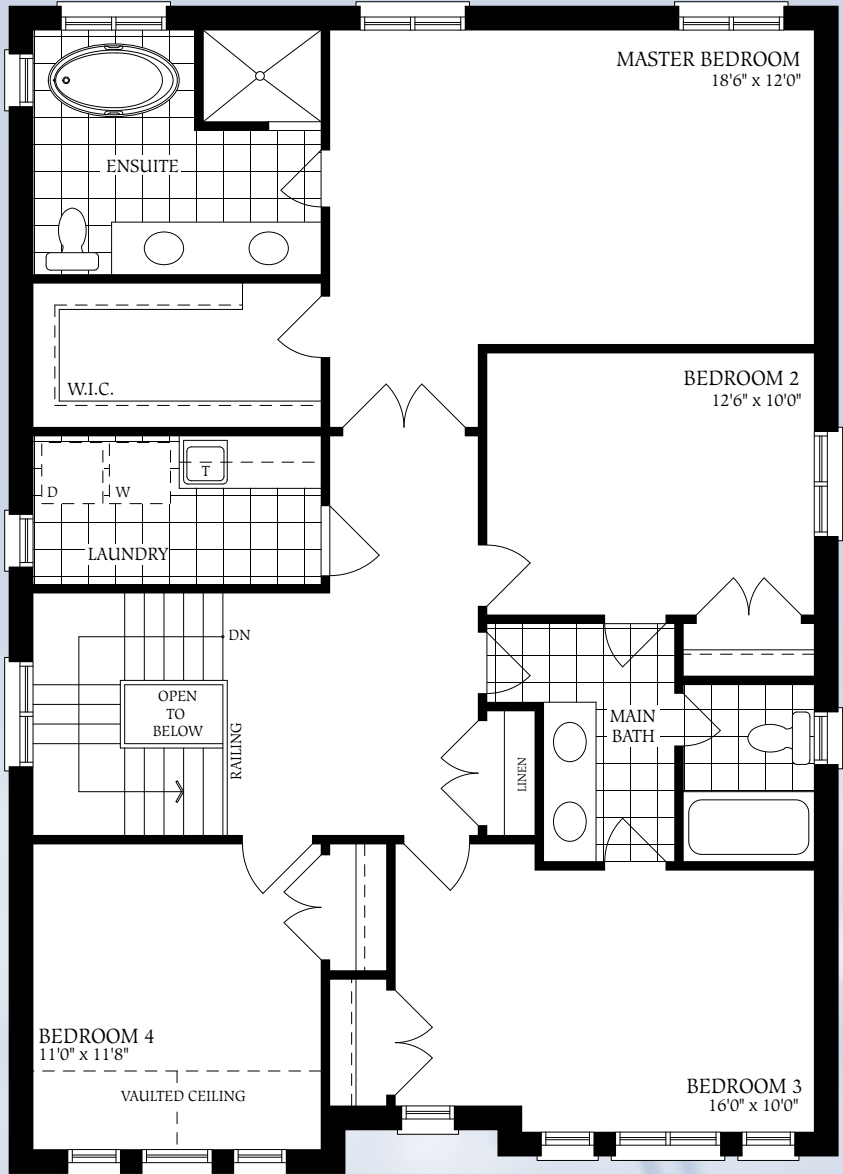


# The Cambridge

50 FT.



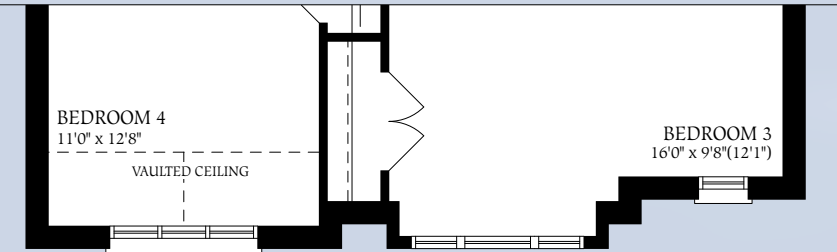
Second Floor  
Elevation A



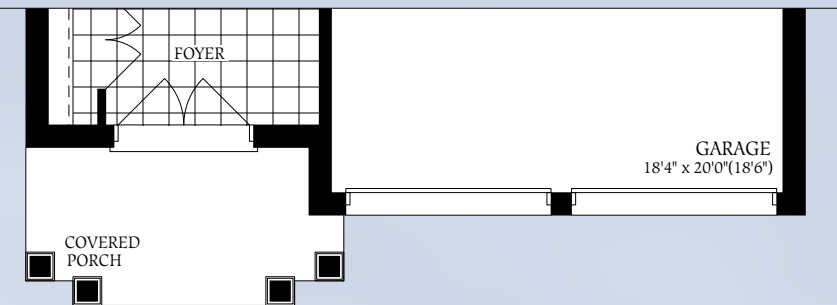
Basement  
Elevation A

# The Cambridge

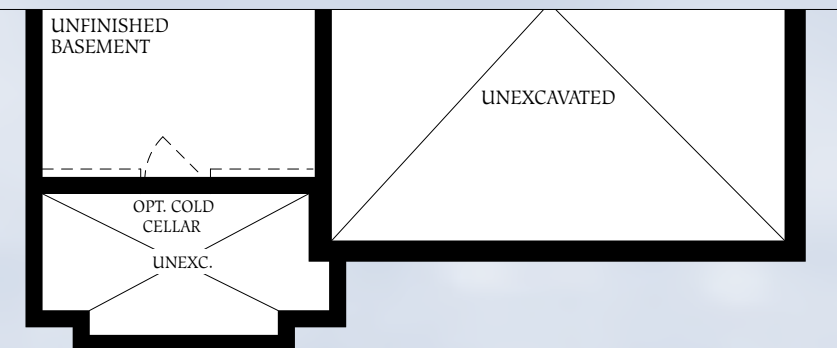
50 FT.



Second Floor  
Elevation B



Ground Floor  
Elevation B



Basement  
Elevation B





**2709** SQ.FT.  
ELEVATION A

# The Newcastle

**50 FT.**

SINGLES



# The Newcastle

**2697** SQ.FT.  
ELEVATION B



**50 FT.**

SINGLES



Artist's concept

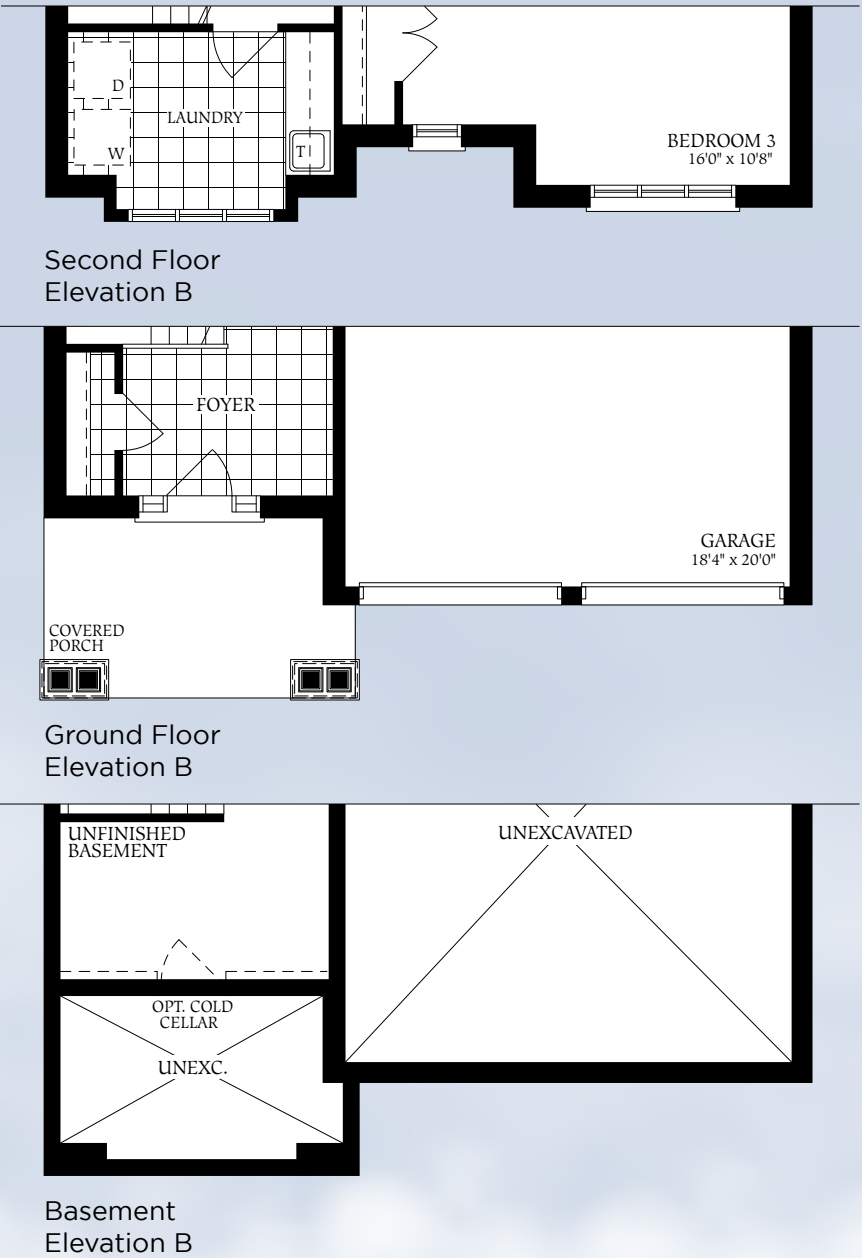
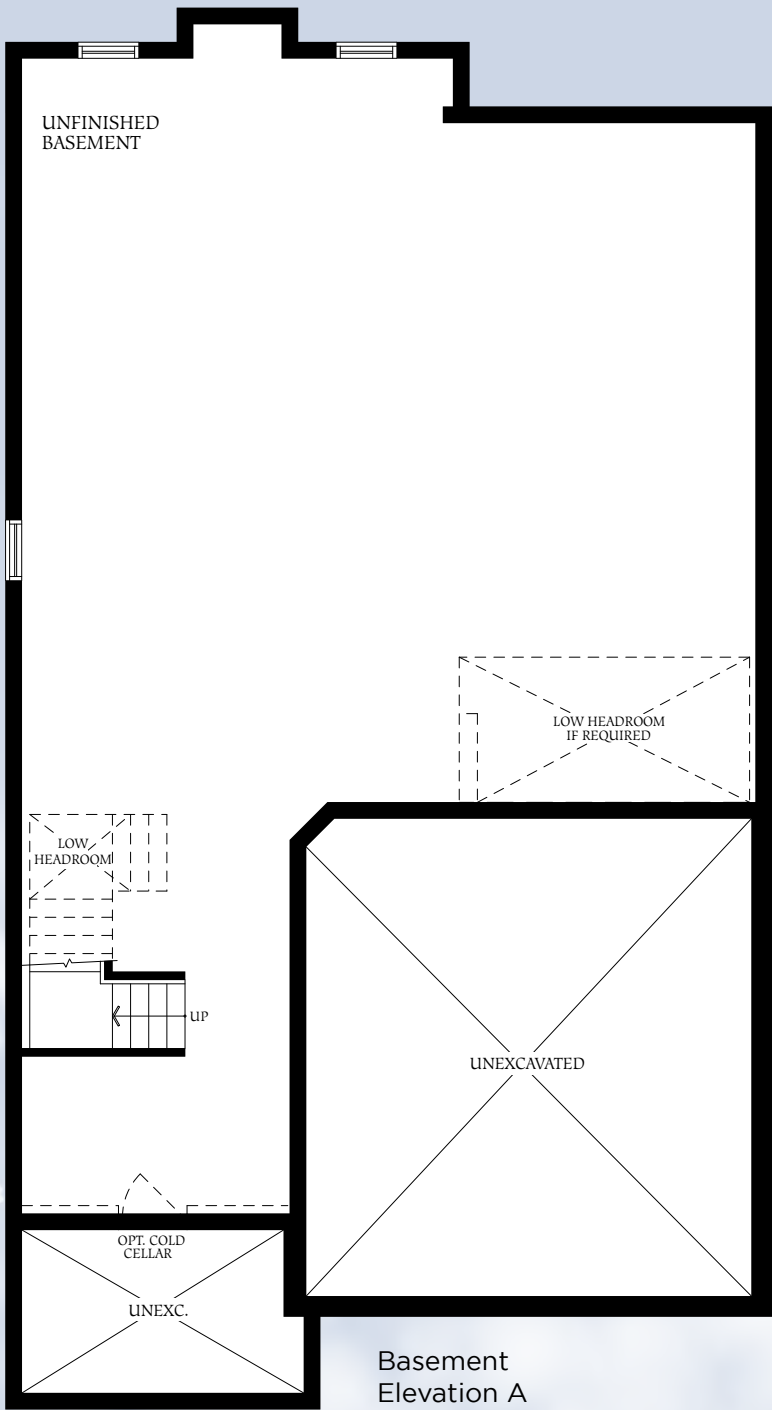
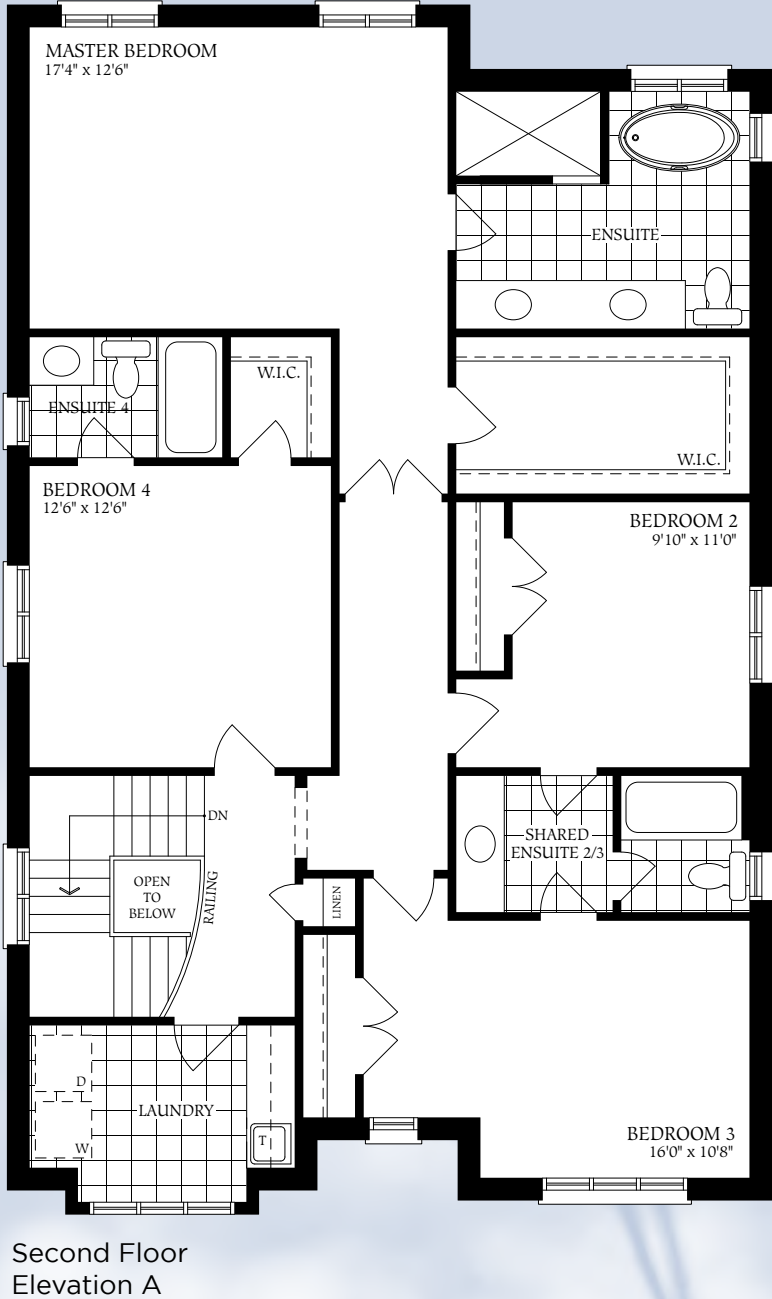
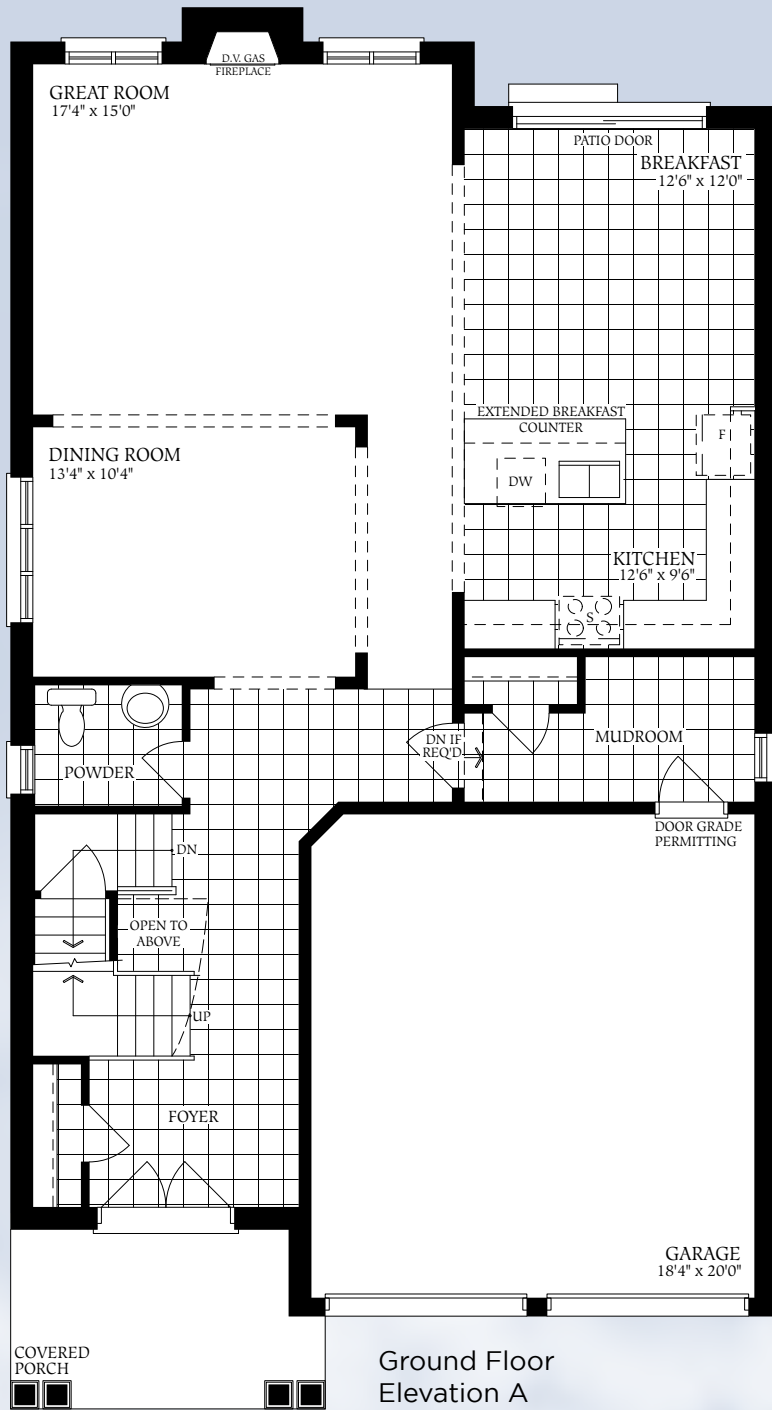


The Newcastle

The Newcastle

50 FT.

50 FT.



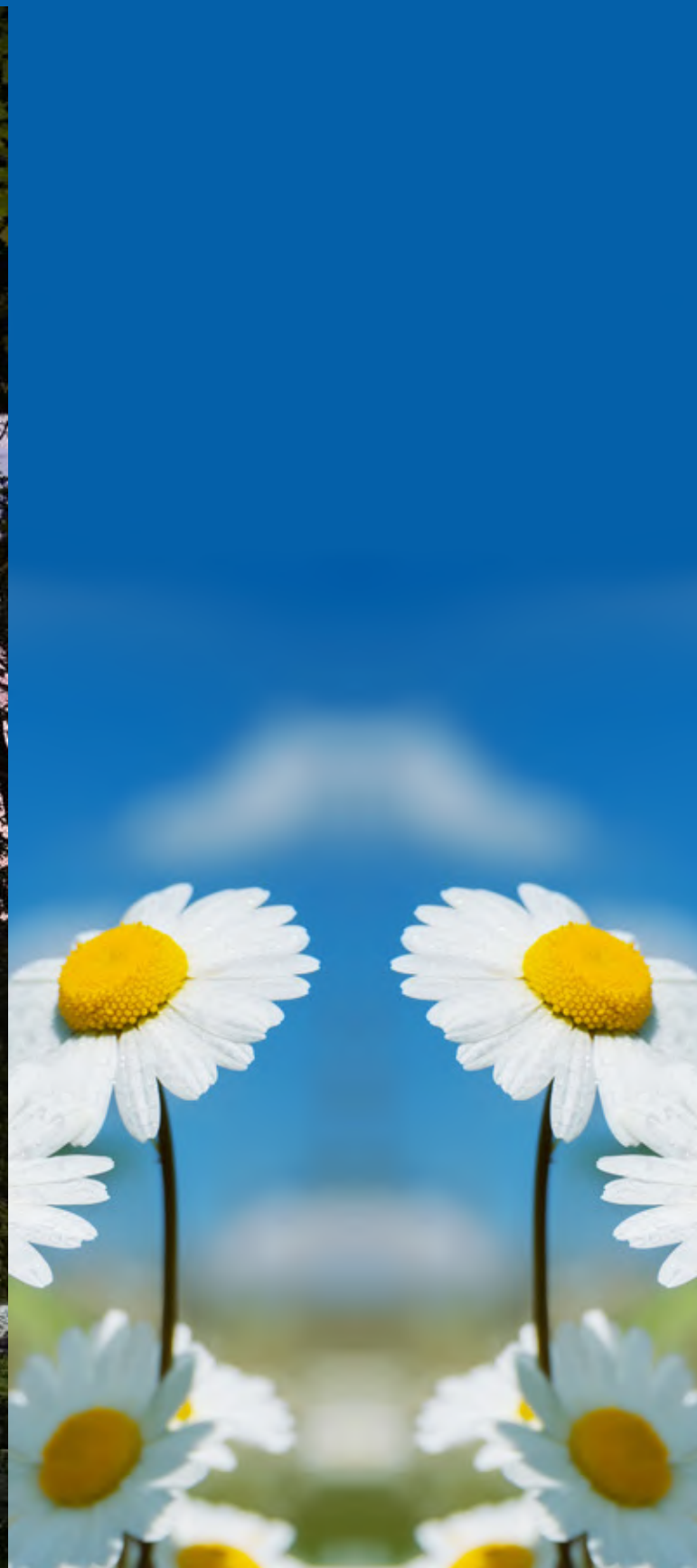




**2831** SQ.FT.  
ELEVATION A

# The Manchester

**50 FT.**  
SINGLES



# The Manchester

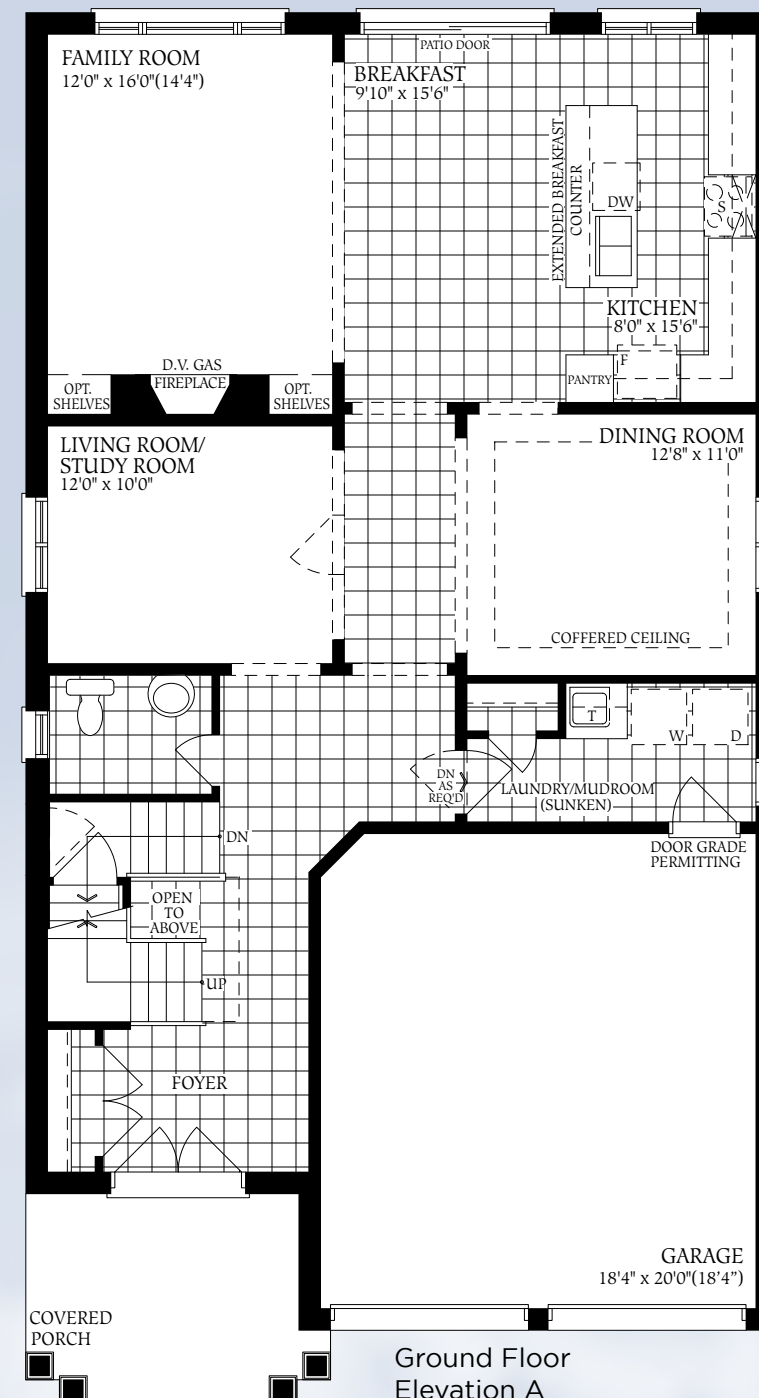
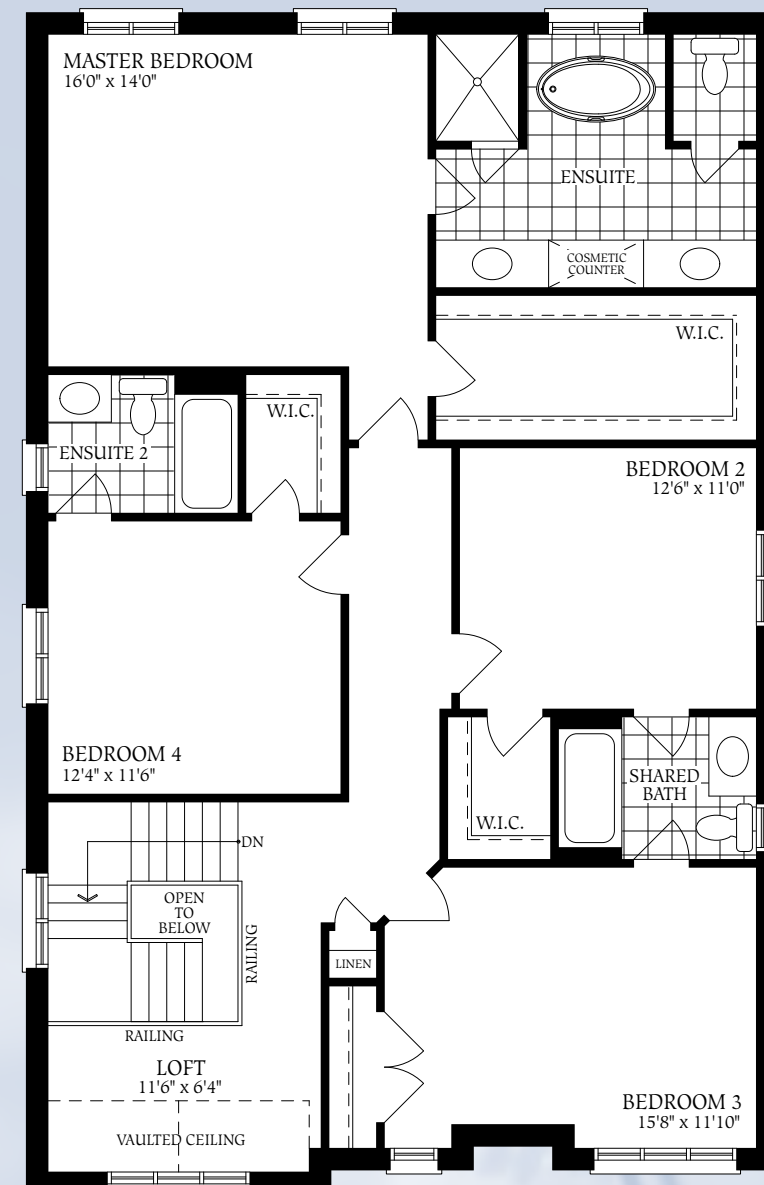
**2836** SQ.FT.  
ELEVATION B



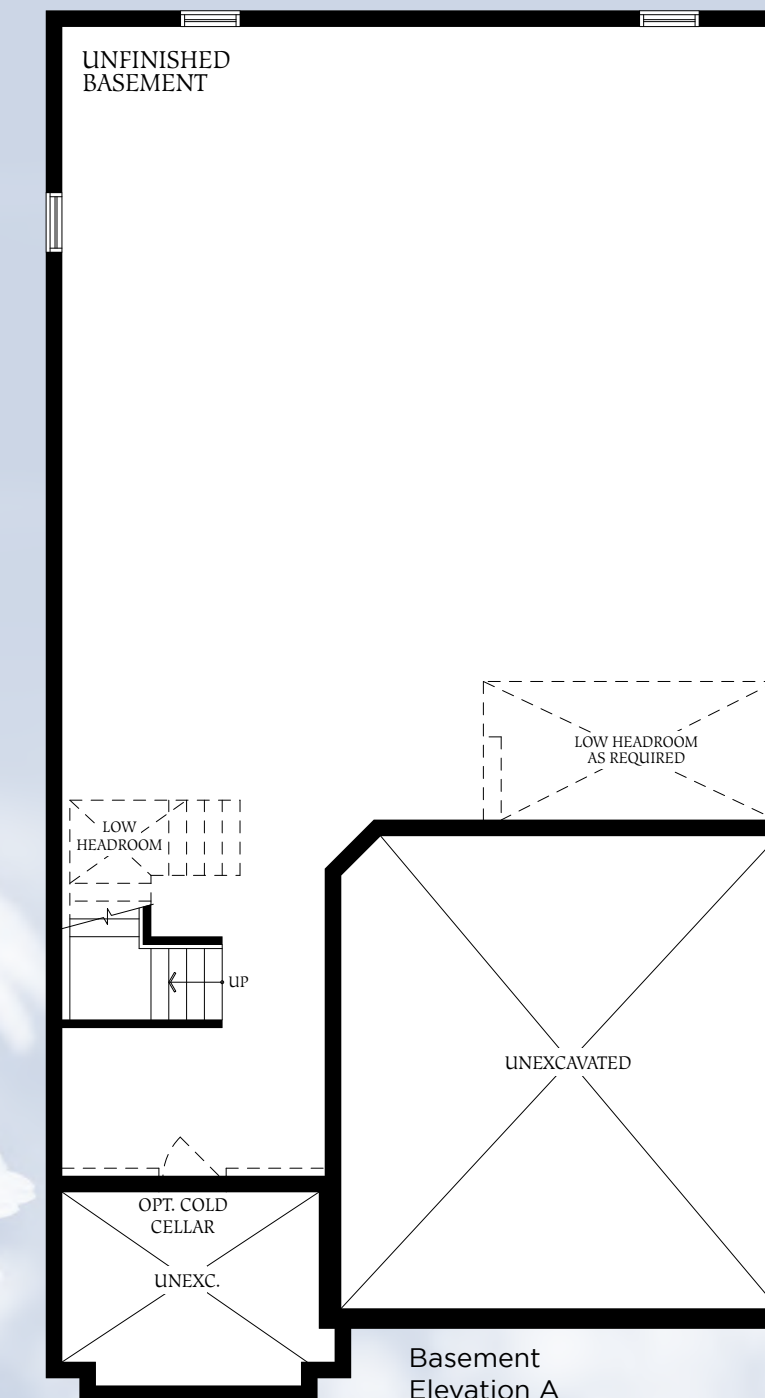
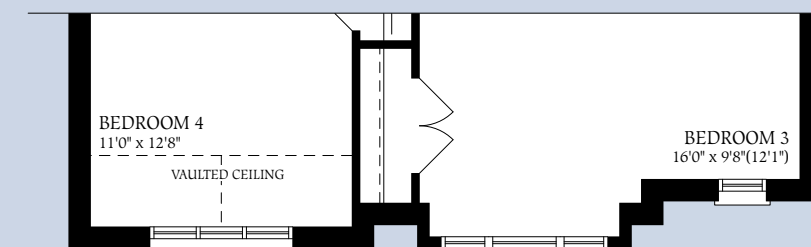
**50 FT.**  
SINGLES



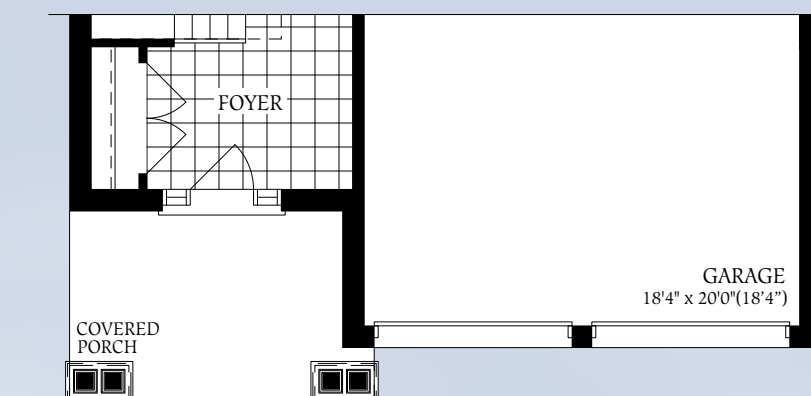


Ground Floor  
Elevation A

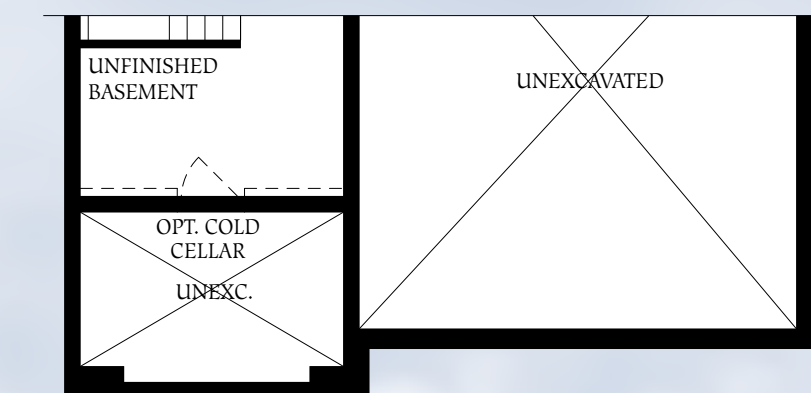
Second Floor  
Elevation A

Basement  
Elevation A

Second Floor  
Elevation B



Ground Floor  
Elevation B

Basement  
Elevation B





**3076** SQ.FT.  
ELEVATION A

# The Somerset

50 FT.

SINGLES



# The Somerset

**3065** SQ.FT.  
ELEVATION B



50 FT.

SINGLES



Artist's concept.

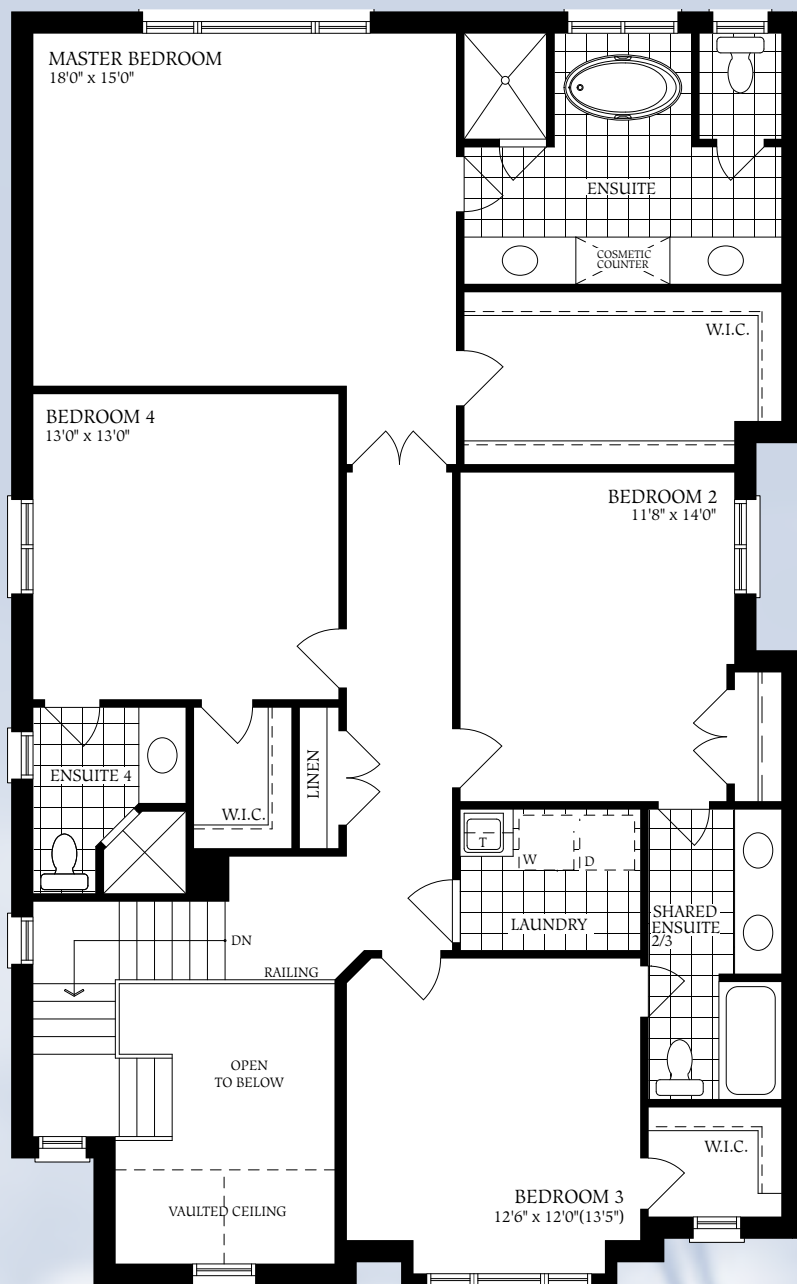
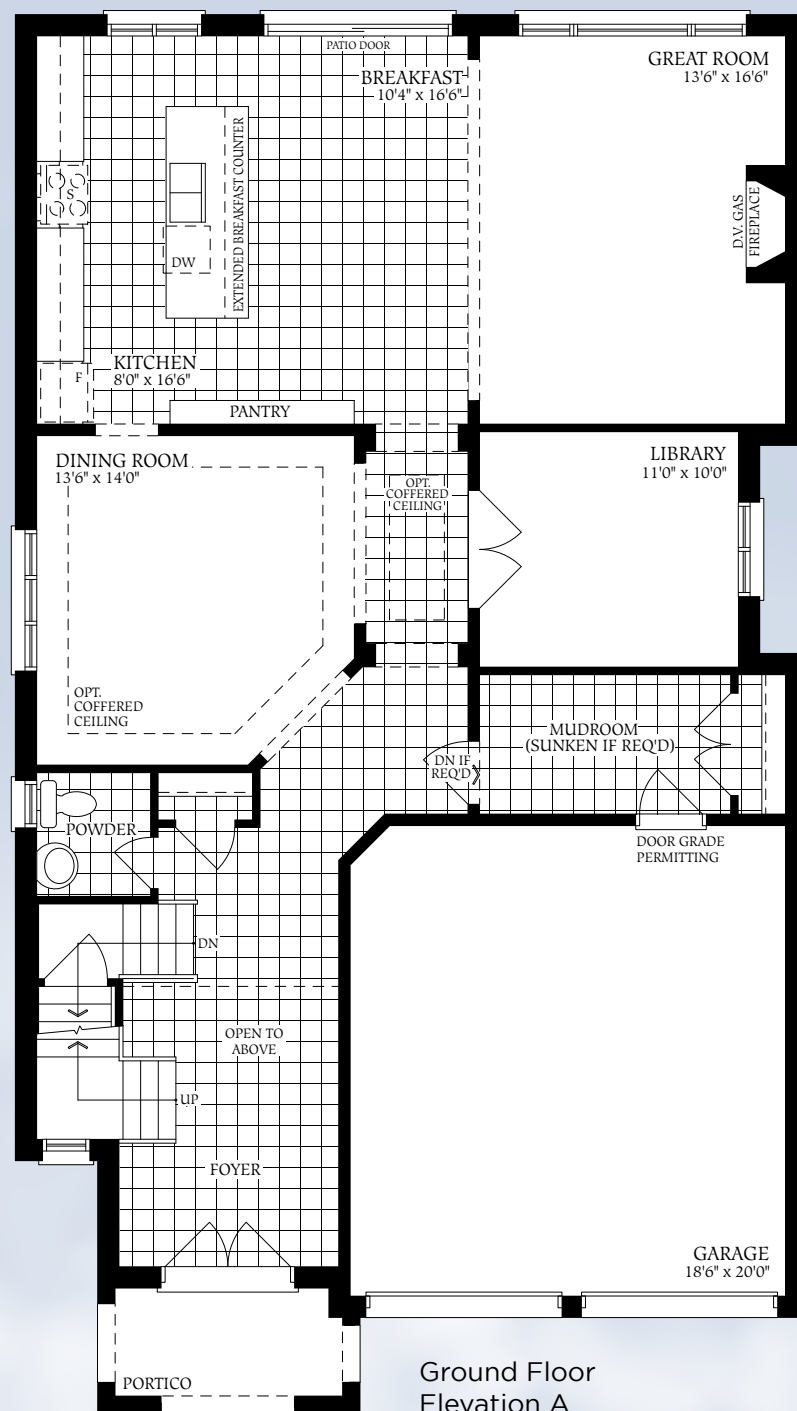


# The Somerset

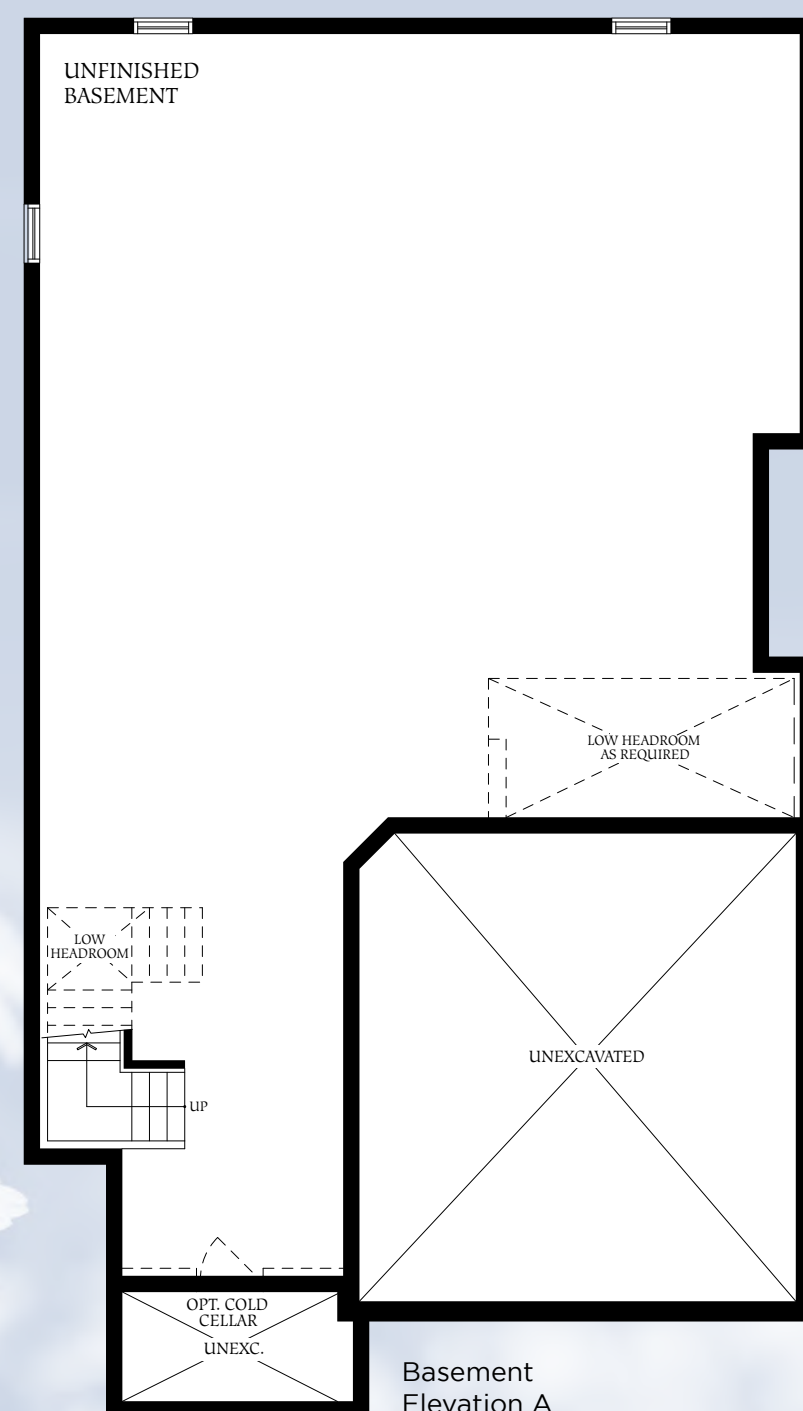
# The Somerset

50 FT.

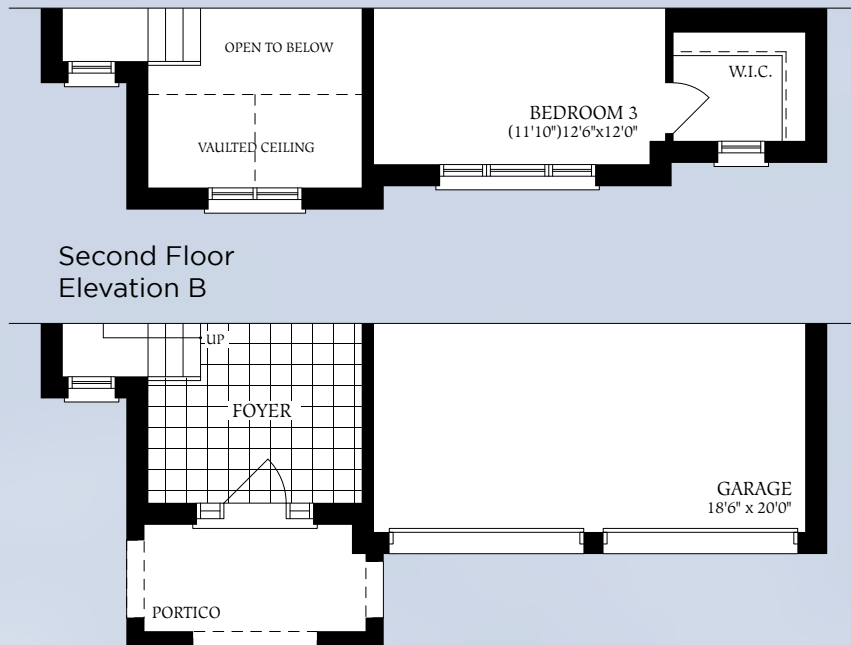
50 FT.



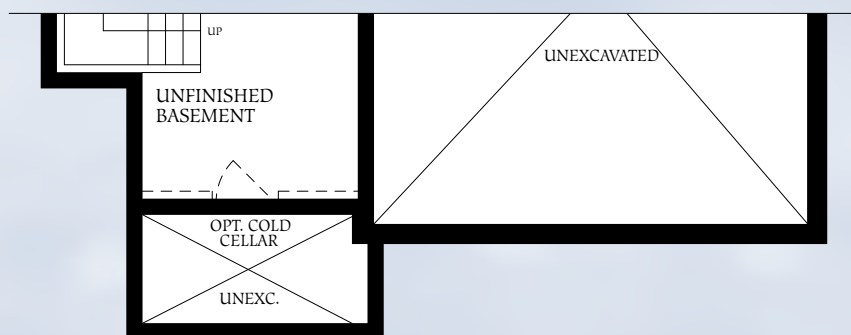
Second Floor  
Elevation A



Basement  
Elevation A



Second Floor  
Elevation B



Ground Floor  
Elevation B

Basement  
Elevation B





---

# THE SEMI-DETACHED SERIES

---



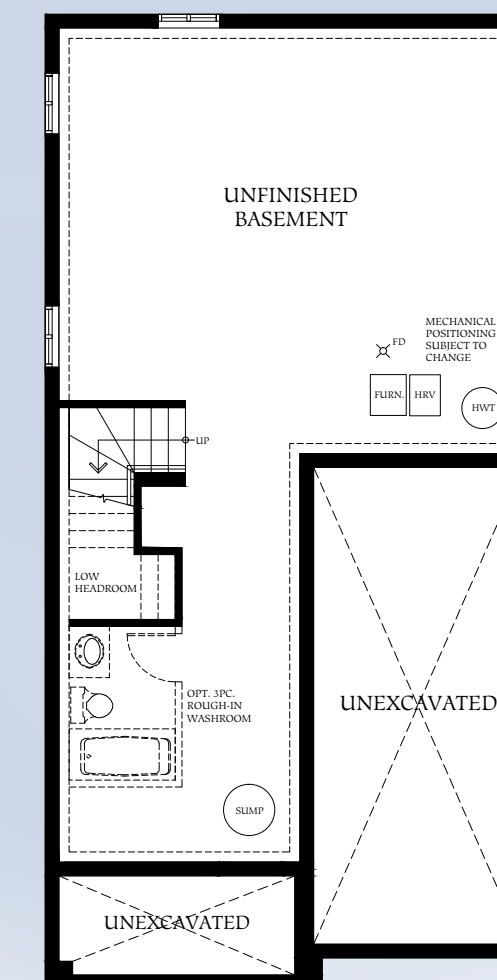
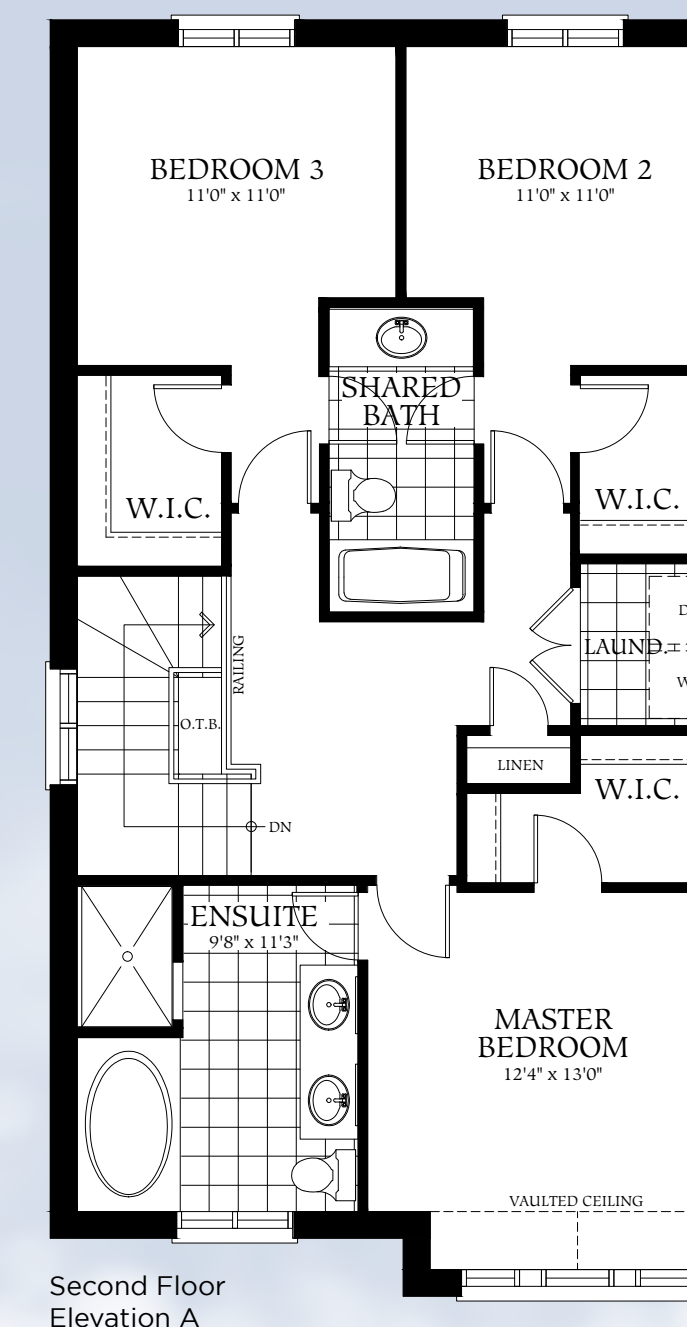
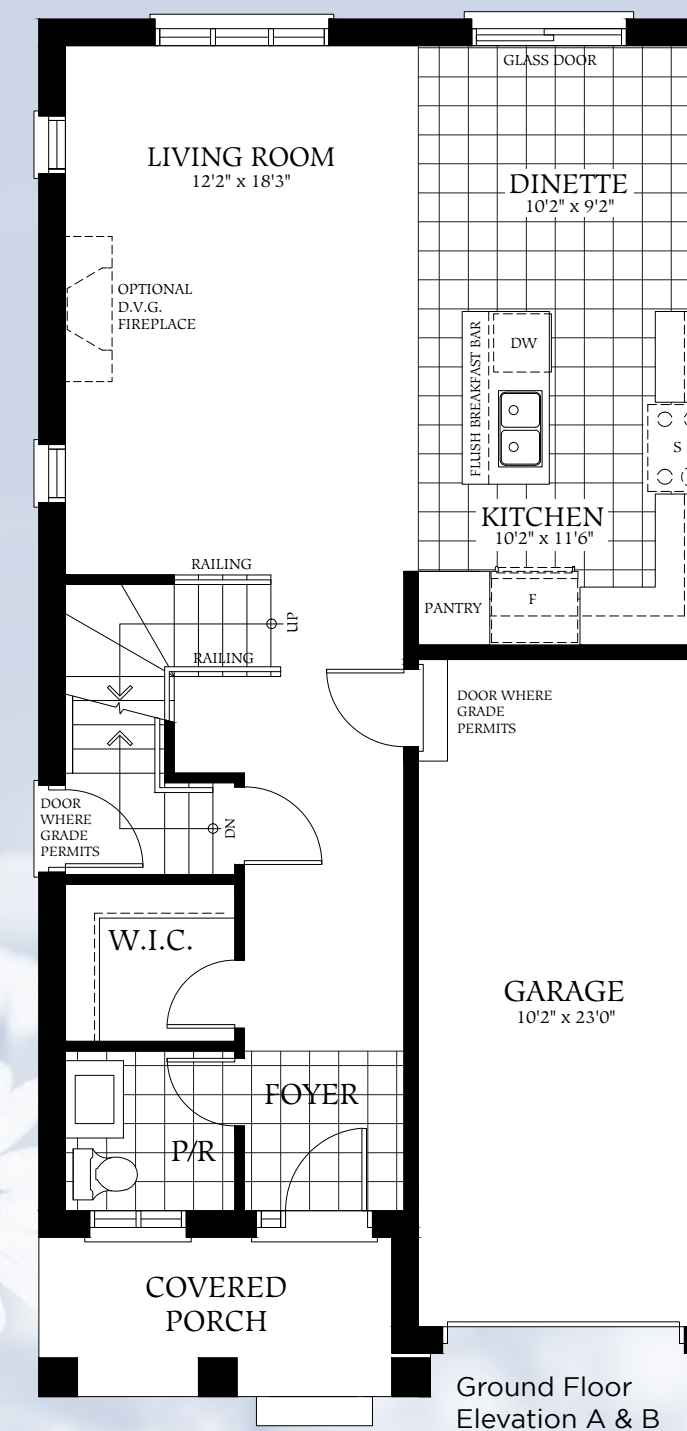
# The Holland

SEMI  
DETACHED



# The Holland

SEMI-DETACHED



Basement  
Elevation A & B



Second Floor  
Elevation B



# The Pembroke

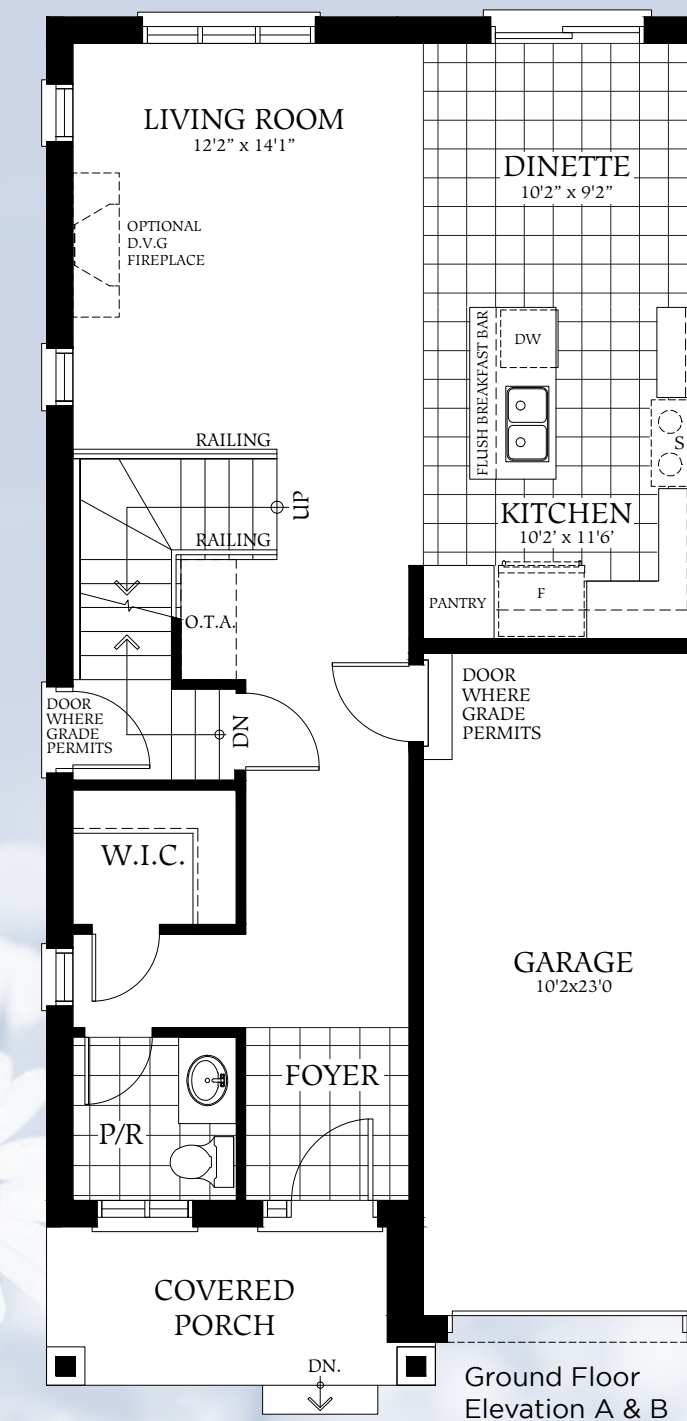
SEMI  
DETACHED



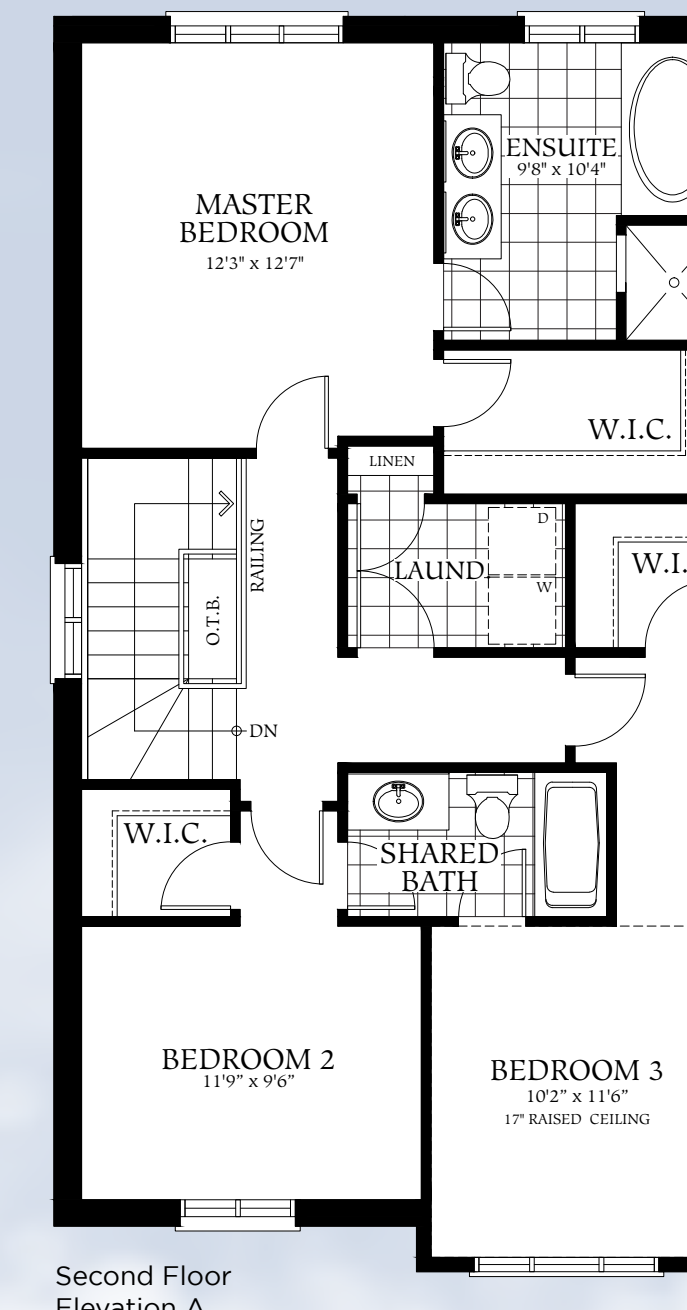
Artist's concept

# The Pembroke

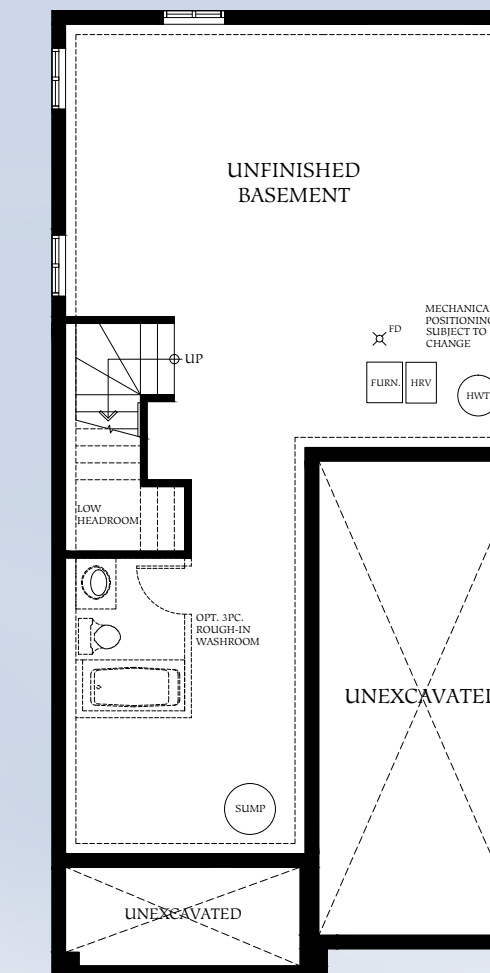
SEMI-DETACHED



Ground Floor  
Elevation A & B



Second Floor  
Elevation A



Basement  
Elevation A & B



Second Floor  
Elevation B

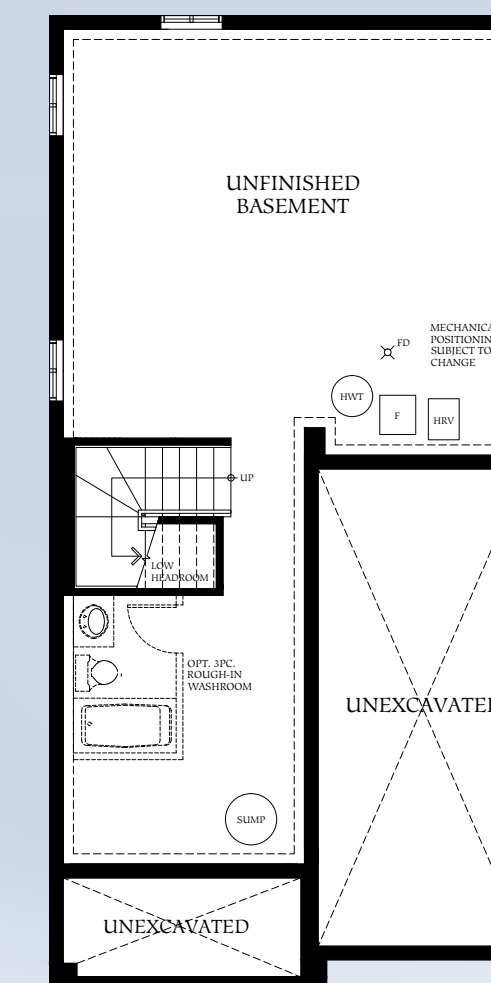
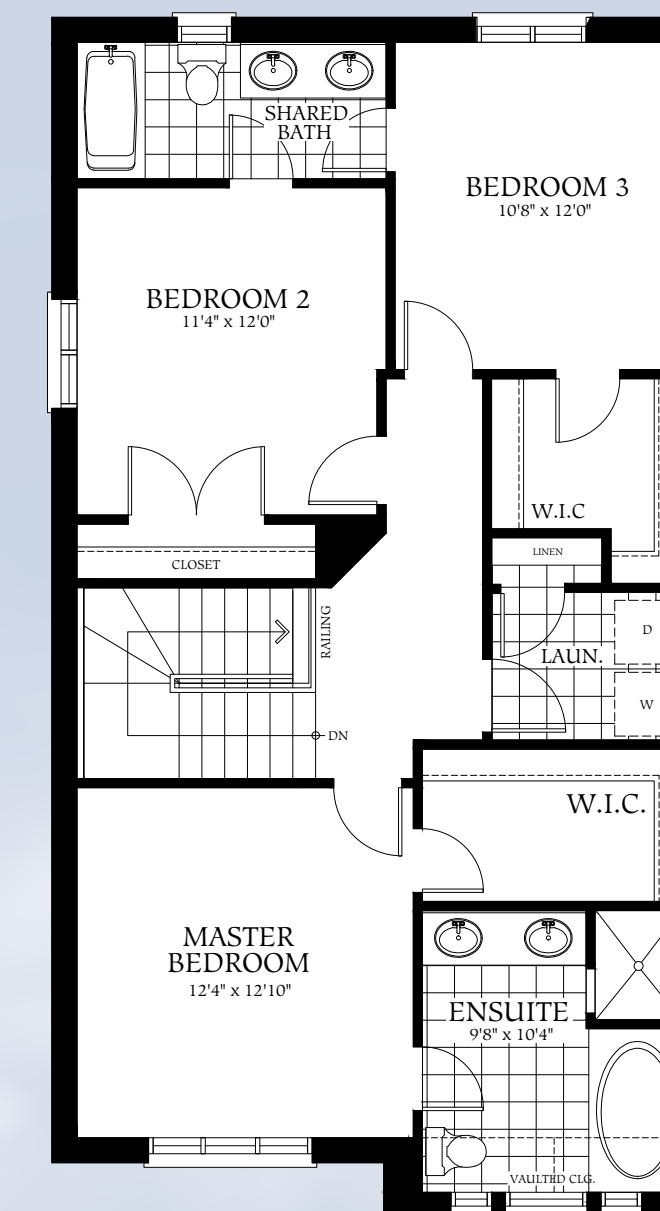
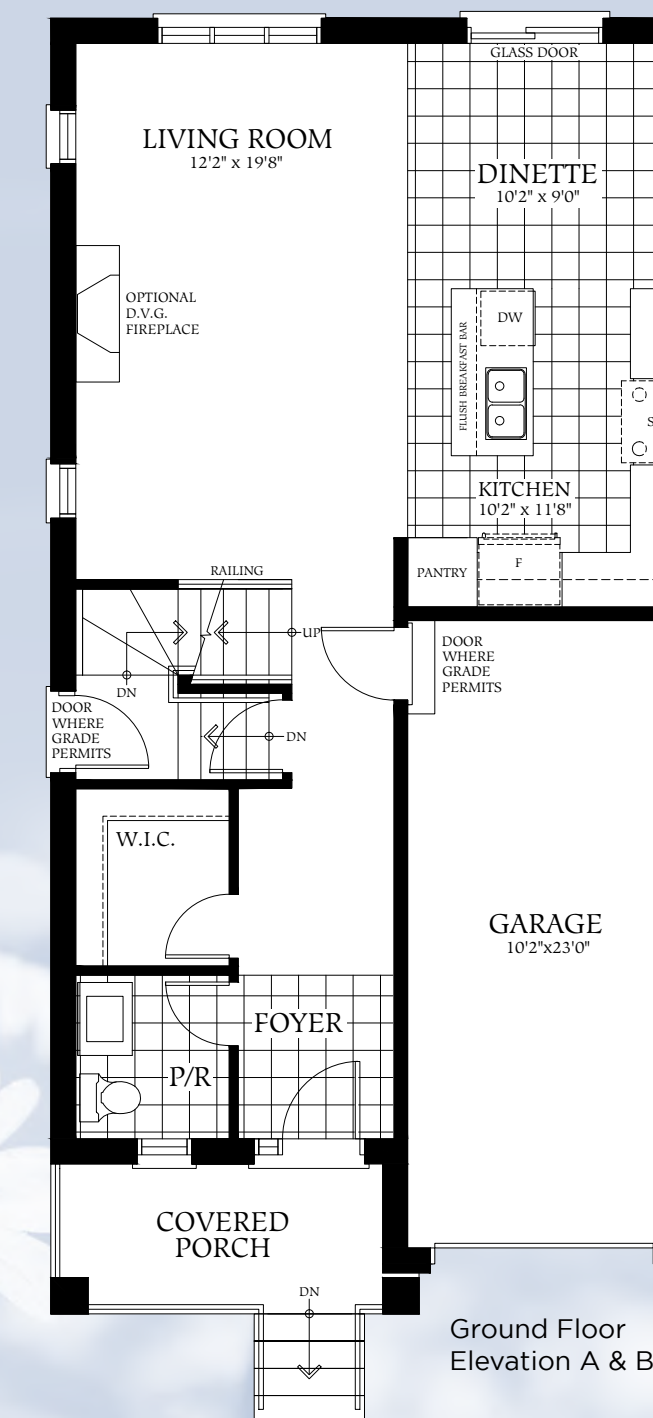
The floor plans and elevations shown are pre-construction plans and may be revised or improved as necessitated by architectural controls and the construction process. The measurements adhere to the rules and regulations of the TARION Warranty Corporation's official method for the calculation of floor area. Actual usable floor space may vary from the stated floor area. Railings on front porch only where required by O.B.C. All inside offered ceiling and heights are approximate. All images and landscaping are artist's concept only and not indicative of what purchaser is actually getting. E. & O. E. May 2022 Pembroke



SEMI  
DETACHED



SEMI-DETACHED





# Maple Brook homes is a diversified builder and land developer with over 40 years of experience.

We are committed to well designed and well-built homes that stand the test of time and add value to the community in which they are located.

We're a family run business that takes pride in what we do. Part of our family is our trades. Some of them have been with us for 30 years. We have communities in Bradford, Newmarket, Mount Albert, Stouffville, Keswick, Sutton, Uxbridge, and now Lindsay. Come and see us, you'll like what you see.

