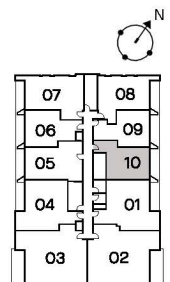
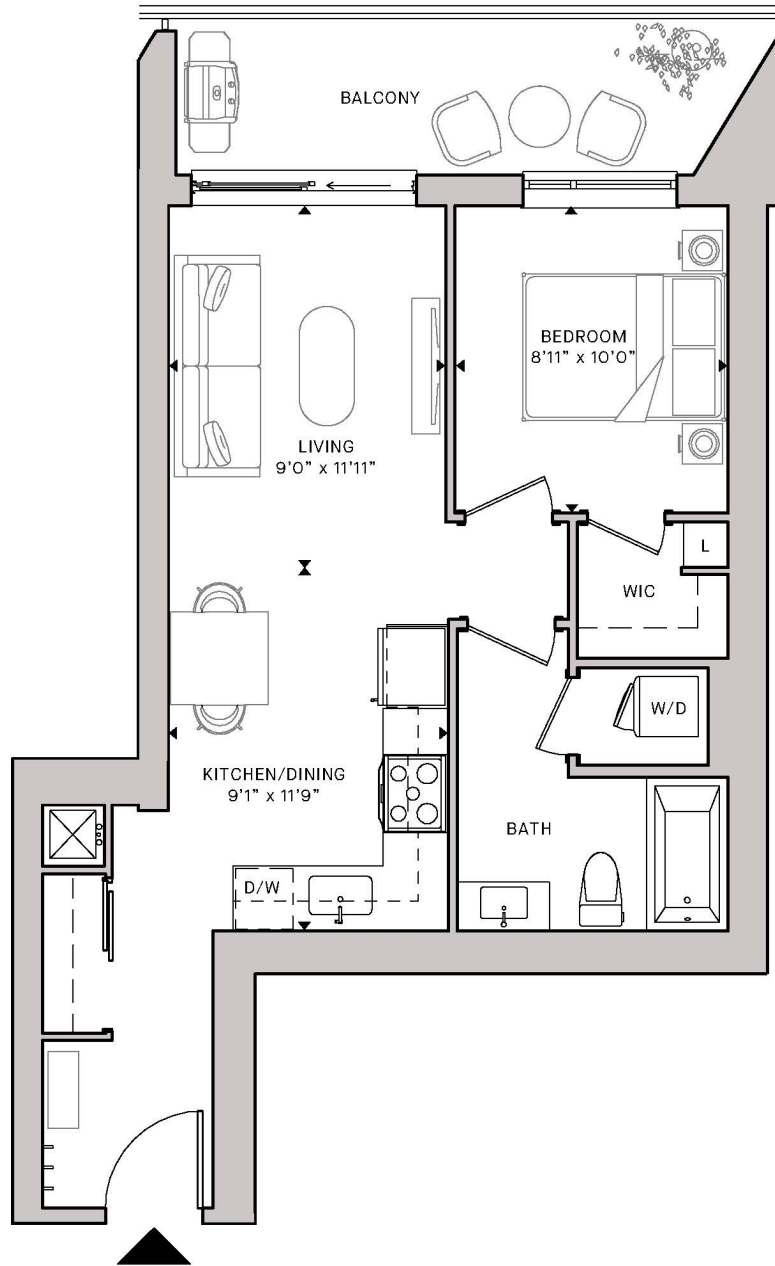


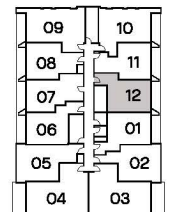
The Prosecco

1 Bed, 1 Bath

Interior 589 SF
 Exterior 104 SF
Total 693 SF



Floors 7,8,9,10,11



Floors 4,5,6

Porta

BELLEVILLE WATERFRONT LIVING

Floor plans are intended to give a general indication of the proposed layout only. Architectural, structural, and mechanical layouts are subject to change without notice. All materials, specifications, details and dimensions, if any, are approximate and subject to change by the Vendor without notice to the Purchaser in order to comply with building site conditions and municipal, structural, Vendor, and/or architectural requirements. Actual usable floor space may vary from the stated floor area in accordance with Bulletin 22 published by the Tarion Warranty Corporation. Bulkheads are not shown on this plan and may be located in areas of the Unit as required. All exterior spaces shown, if any, are exclusive use common elements shown for display purposes only and the location and size are subject to change by the Vendor without notice to the Purchaser. Window location, size and type may vary without notice to the Purchaser.

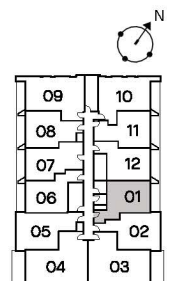
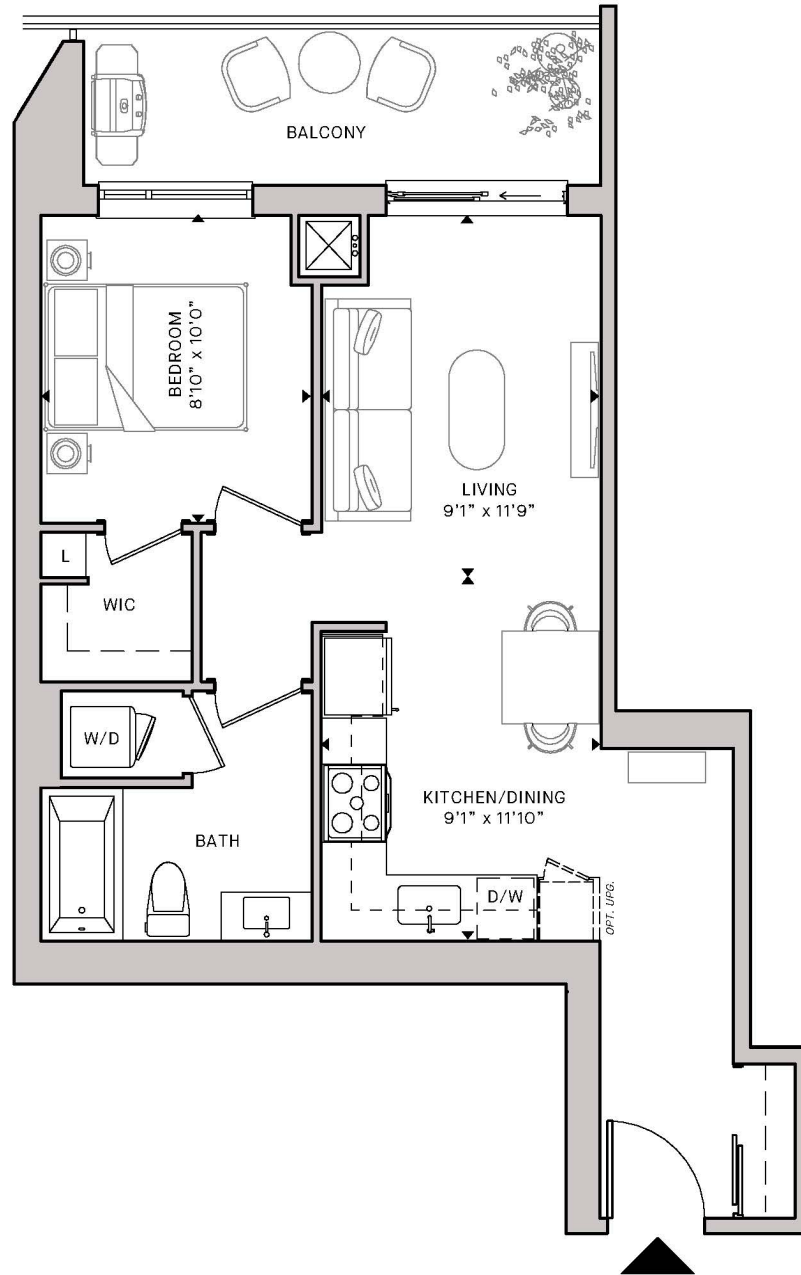
Certain floors may have less floor space due to thicker structural members, mechanical rooms, etc. This plan supersedes any marketing plan or material. Furniture and fixture representations are for illustration purposes only and do not reflect electrical plans for the suite. All suites are sold unfurnished. All measurements are calculated in accordance with industry accepted standards. All images and dimensions are not intended to form a part of any Agreement and are included for display purposes only. E.O.E. March 2023.

MDM
 MDM DEVELOPMENTS

The Blush

1 Bed, 1 Bath

Interior 590 SF
 Exterior 87 SF
Total 677 SF



Floors 4,5,6

Porta

BELLEVILLE WATERFRONT LIVING

Floor plans are intended to give a general indication of the proposed layout only. Architectural, structural, and mechanical layouts are subject to change without notice. All materials, specifications, details and dimensions, if any, are approximate and subject to change by the Vendor without notice to the Purchaser in order to comply with building site conditions and municipal, structural, Vendor, and/or architectural requirements. Actual usable floor space may vary from the stated floor area in accordance with Bulletin 22 published by the Tarion Warranty Corporation. Bulkheads are not shown on this plan and may be located in areas of the Unit as required. All exterior spaces shown, if any, are exclusive use common elements shown for display purposes only and the location and size are subject to change by the Vendor without notice to the Purchaser. Window location, size and type may vary without notice to the Purchaser.

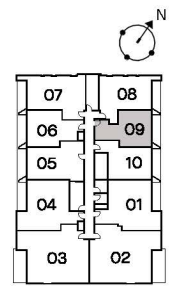
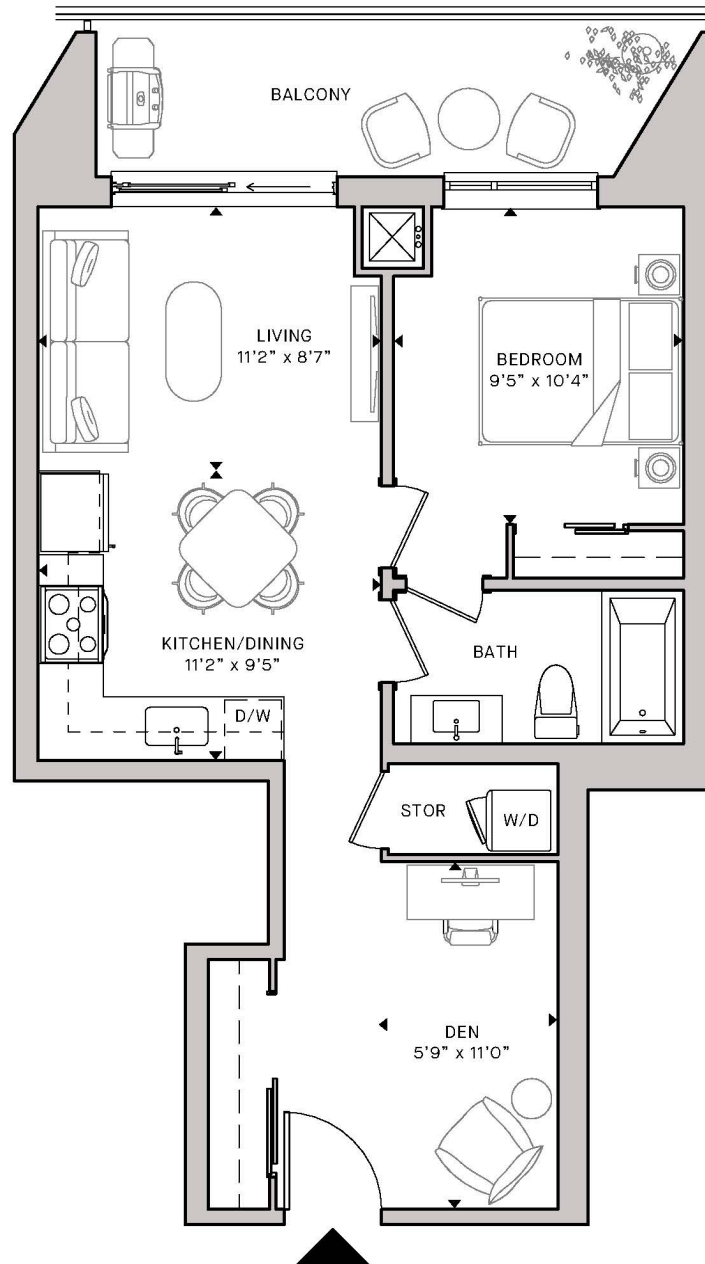
Certain floors may have less floor space due to thicker structural members, mechanical rooms, etc. This plan supersedes any marketing plan or material. Furniture and fixture representations are for illustration purposes only and do not reflect electrical plans for the suite. All suites are sold unfurnished. All measurements are calculated in accordance with industry accepted standards. All images and dimensions are not intended to form a part of any Agreement and are included for display purposes only. E.O.E. March 2023.

MDM
 MDM DEVELOPMENTS

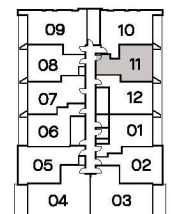
The Beaujolais

1 Bed + Den, 1 Bath

Interior 593 SF
 Exterior 104 SF
Total 697 SF



Floors 7,8,9,10,11



Floors 4,5,6

Porta

BELLEVILLE WATERFRONT LIVING

Floor plans are intended to give a general indication of the proposed layout only. Architectural, structural, and mechanical layouts are subject to change without notice. All materials, specifications, details and dimensions, if any, are approximate and subject to change by the Vendor without notice to the Purchaser in order to comply with building site conditions and municipal, structural, Vendor, and/or architectural requirements. Actual usable floor space may vary from the stated floor area in accordance with Bulletin 22 published by the Tarion Warranty Corporation. Bulkheads are not shown on this plan and may be located in areas of the Unit as required. All exterior spaces shown, if any, are exclusive use common elements shown for display purposes only and the location and size are subject to change by the Vendor without notice to the Purchaser. Window location, size and type may vary without notice to the Purchaser.

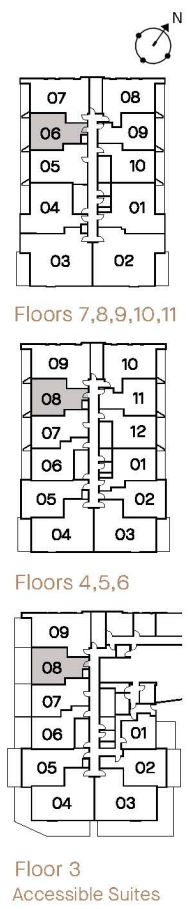
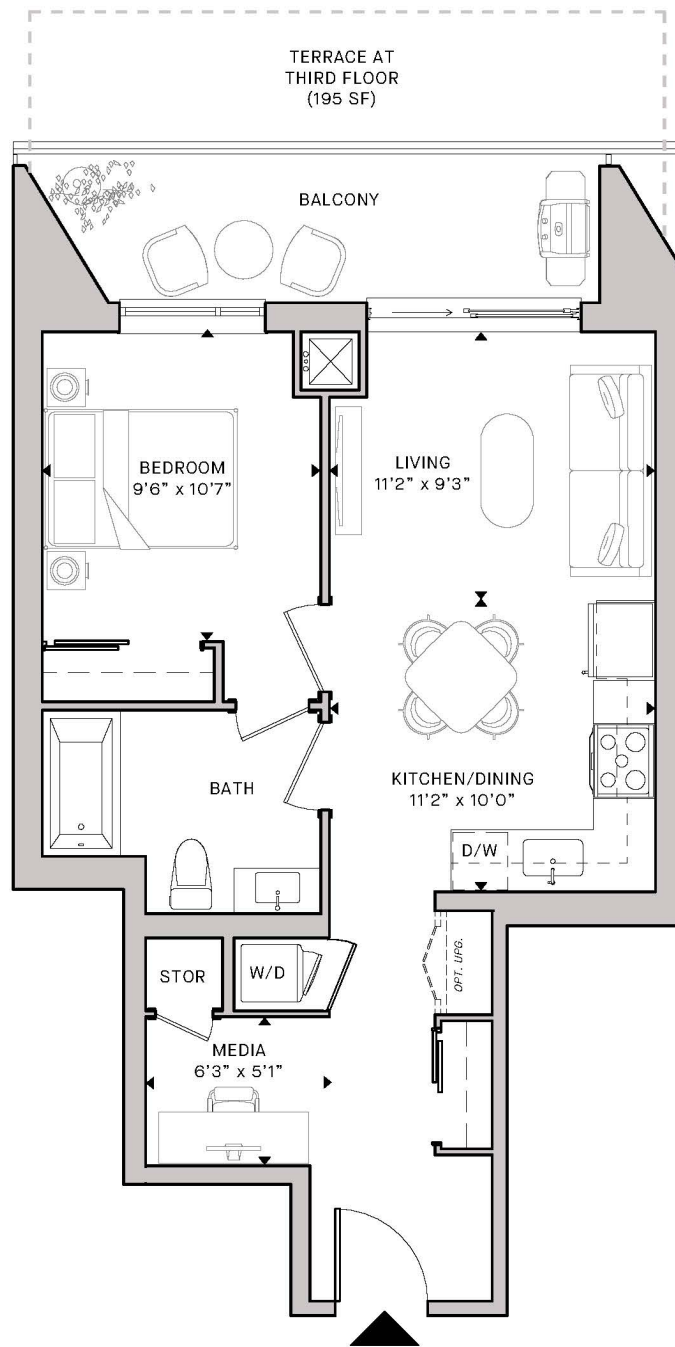
Certain floors may have less floor space due to thicker structural members, mechanical rooms, etc. This plan supersedes any marketing plan or material. Furniture and fixture representations are for illustration purposes only and do not reflect electrical plans for the suite. All suites are sold unfurnished. All measurements are calculated in accordance with industry accepted standards. All images and dimensions are not intended to form a part of any Agreement and are included for display purposes only. E.O.E. March 2023.

MDM
 MDM DEVELOPMENTS

The Meritage

1 Bed + Media, 1 Bath

Interior 604 SF
 Exterior 104 SF
Total 708 SF



Porta

BELLEVILLE WATERFRONT LIVING

Floor plans are intended to give a general indication of the proposed layout only. Architectural, structural, and mechanical layouts are subject to change without notice. All materials, specifications, details and dimensions, if any, are approximate and subject to change by the Vendor without notice to the Purchaser in order to comply with building site conditions and municipal, structural, Vendor, and/or architectural requirements. Actual usable floor space may vary from the stated floor area in accordance with Bulletin 22 published by the Tarion Warranty Corporation. Bulkheads are not shown on this plan and may be located in areas of the Unit as required. All exterior spaces shown, if any, are exclusive use common elements shown for display purposes only and the location and size are subject to change by the Vendor without notice to the Purchaser. Window location, size and type may vary without notice to the Purchaser.

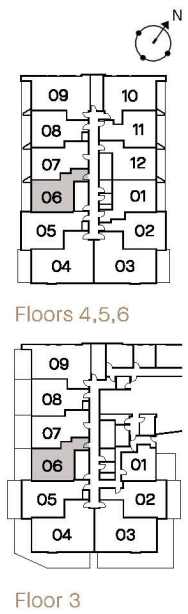
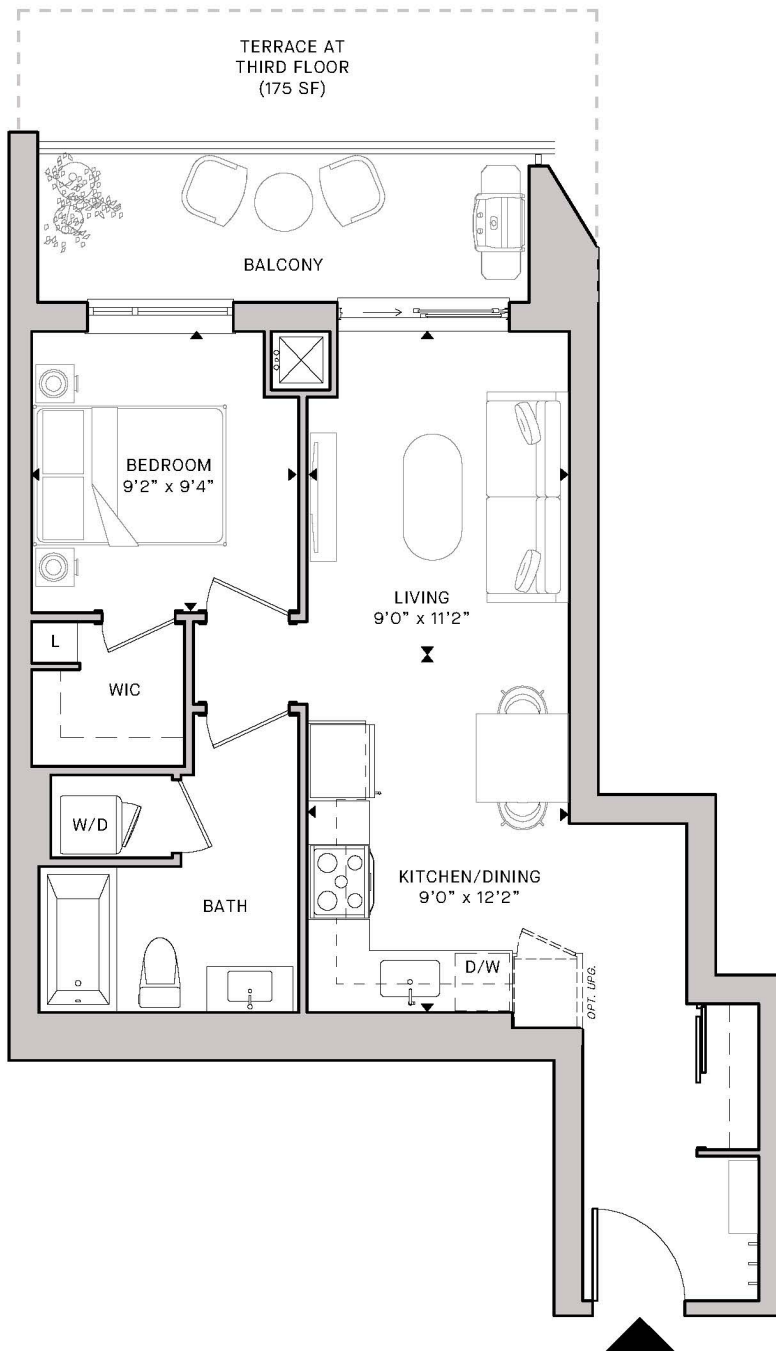
Certain floors may have less floor space due to thicker structural members, mechanical rooms, etc. This plan supersedes any marketing plan or material. Furniture and fixture representations are for illustration purposes only and do not reflect electrical plans for the suite. All suites are sold unfurnished. All measurements are calculated in accordance with industry accepted standards. All images and dimensions are not intended to form a part of any Agreement and are included for display purposes only. E.O.E. March 2023.



The Pinot

1 Bed, 1 Bath

Interior 607 SF
 Exterior 87 SF
Total 694 SF



Porta

BELLEVILLE WATERFRONT LIVING

Floor plans are intended to give a general indication of the proposed layout only. Architectural, structural, and mechanical layouts are subject to change without notice. All materials, specifications, details and dimensions, if any, are approximate and subject to change by the Vendor without notice to the Purchaser in order to comply with building site conditions and municipal, structural, Vendor, and/or architectural requirements. Actual usable floor space may vary from the stated floor area in accordance with Bulletin 22 published by the Tarion Warranty Corporation. Bulkheads are not shown on this plan and may be located in areas of the Unit as required. All exterior spaces shown, if any, are exclusive use common elements shown for display purposes only and the location and size are subject to change by the Vendor without notice to the Purchaser. Window location, size and type may vary without notice to the Purchaser.

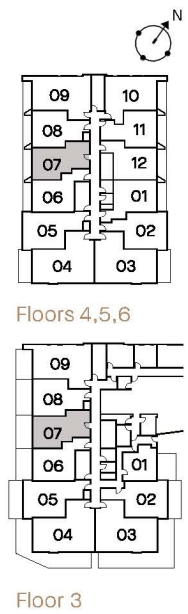
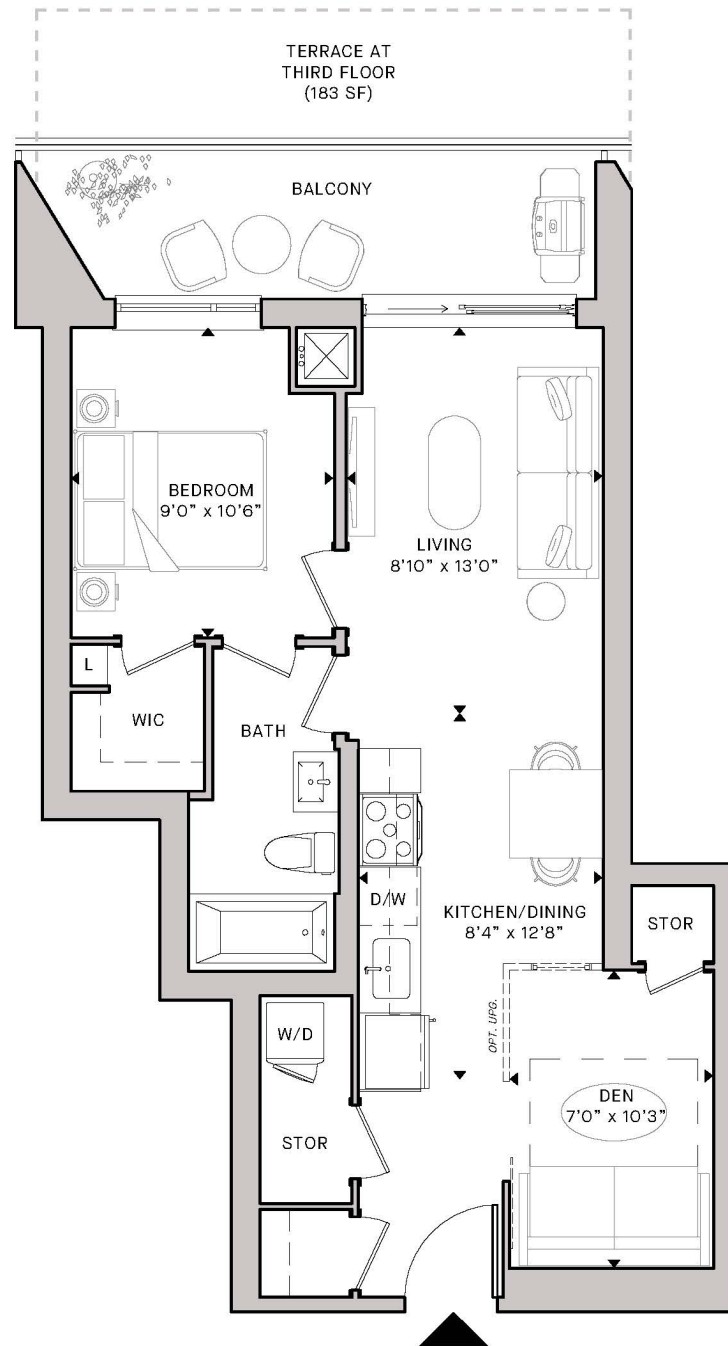
Certain floors may have less floor space due to thicker structural members, mechanical rooms, etc. This plan supersedes any marketing plan or material. Furniture and fixture representations are for illustration purposes only and do not reflect electrical plans for the suite. All suites are sold unfurnished. All measurements are calculated in accordance with industry accepted standards. All images and dimensions are not intended to form a part of any Agreement and are included for display purposes only. E.O.E. March 2023.

MDM
 MDM DEVELOPMENTS

The Blanc

1 Bed + Den, 1 Bath

Interior 625 SF
 Exterior 104 SF
Total 729 SF



Porta

BELLEVILLE WATERFRONT LIVING

Floor plans are intended to give a general indication of the proposed layout only. Architectural, structural, and mechanical layouts are subject to change without notice. All materials, specifications, details and dimensions, if any, are approximate and subject to change by the Vendor without notice to the Purchaser in order to comply with building site conditions and municipal, structural, Vendor, and/or architectural requirements. Actual usable floor space may vary from the stated floor area in accordance with Bulletin 22 published by the Tarion Warranty Corporation. Bulkheads are not shown on this plan and may be located in areas of the Unit as required. All exterior spaces shown, if any, are exclusive use common elements shown for display purposes only and the location and size are subject to change by the Vendor without notice to the Purchaser. Window location, size and type may vary without notice to the Purchaser.

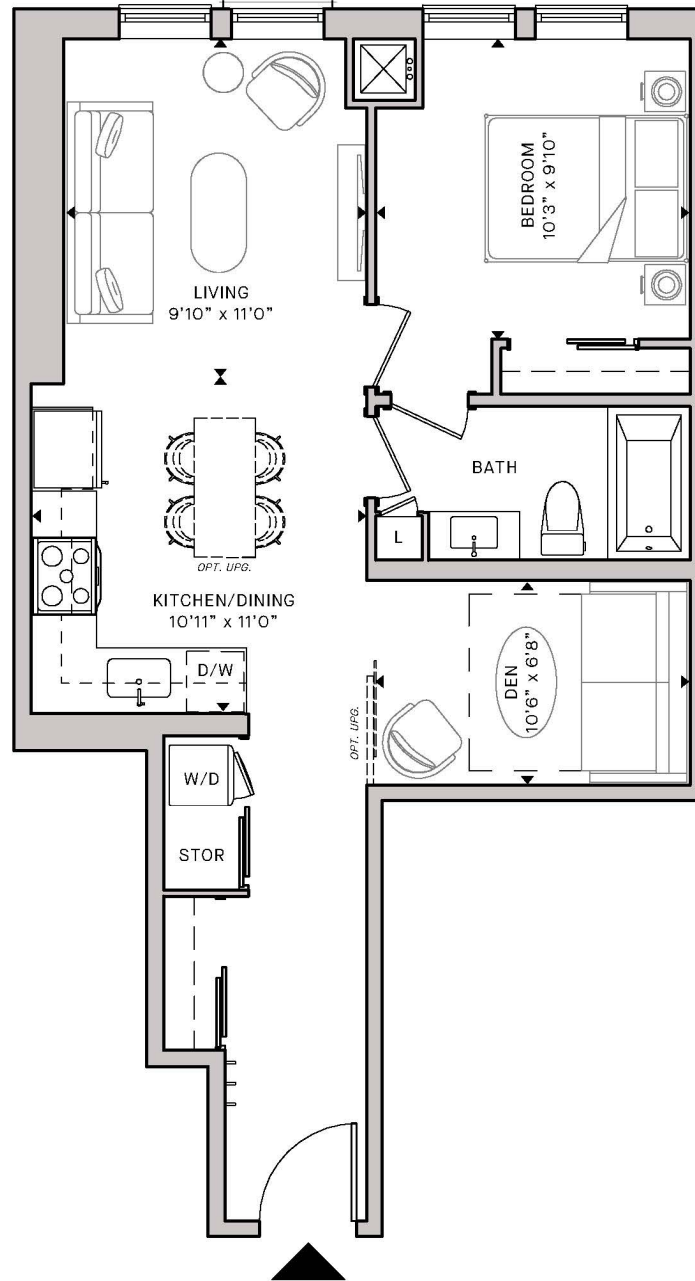
Certain floors may have less floor space due to thicker structural members, mechanical rooms, etc. This plan supersedes any marketing plan or material. Furniture and fixture representations are for illustration purposes only and do not reflect electrical plans for the suite. All suites are sold unfurnished. All measurements are calculated in accordance with industry accepted standards. All images and dimensions are not intended to form a part of any Agreement and are included for display purposes only. E.O.E. March 2023.

MDM
 MDM DEVELOPMENTS

The Shiraz

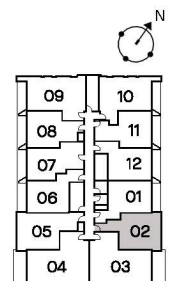
1 Bed + Den, 1 Bath

Interior 653 SF
 Exterior 0 SF
Total 653 SF



Porta

BELLEVILLE WATERFRONT LIVING



Floors 4,5,6

Floor plans are intended to give a general indication of the proposed layout only. Architectural, structural, and mechanical layouts are subject to change without notice. All materials, specifications, details and dimensions, if any, are approximate and subject to change by the Vendor without notice to the Purchaser in order to comply with building site conditions and municipal, structural, Vendor, and/or architectural requirements. Actual usable floor space may vary from the stated floor area in accordance with Bulletin 22 published by the Tarion Warranty Corporation. Bulkheads are not shown on this plan and may be located in areas of the Unit as required. All exterior spaces shown, if any, are exclusive use common elements shown for display purposes only and the location and size are subject to change by the Vendor without notice to the Purchaser. Window location, size and type may vary without notice to the Purchaser.

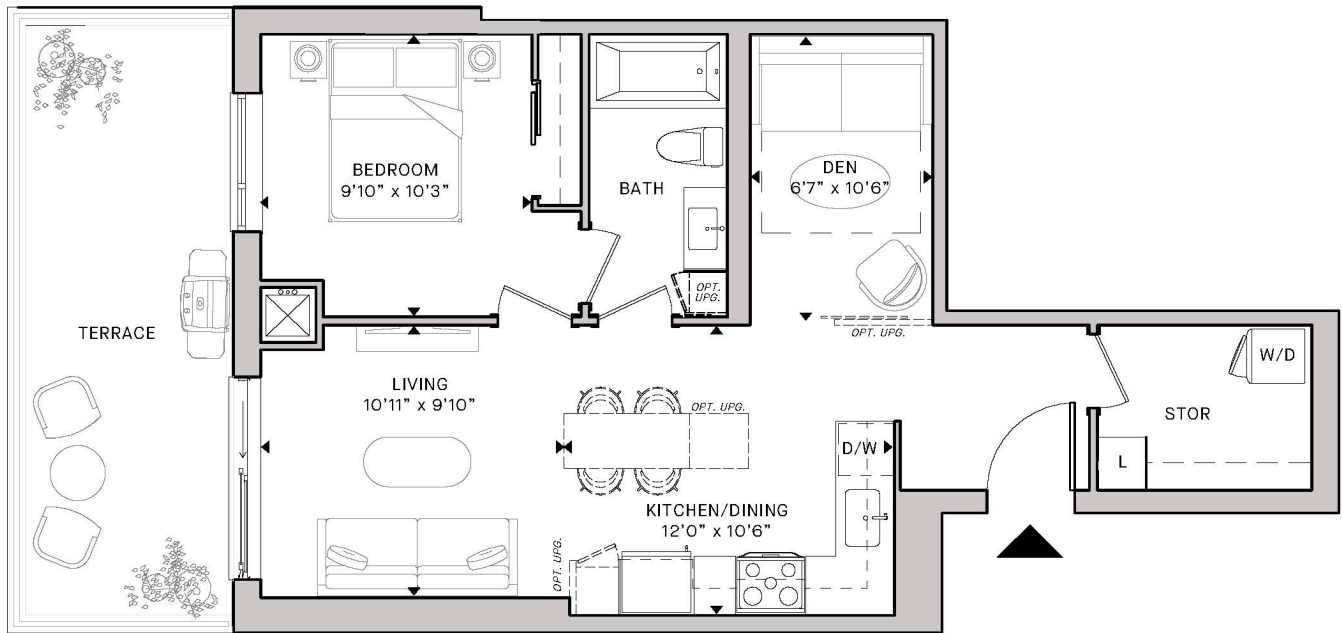
Certain floors may have less floor space due to thicker structural members, mechanical rooms, etc. This plan supersedes any marketing plan or material. Furniture and fixture representations are for illustration purposes only and do not reflect electrical plans for the suite. All suites are sold unfurnished. All measurements are calculated in accordance with industry accepted standards. All images and dimensions are not intended to form a part of any Agreement and are included for display purposes only. E.O.E. March 2023.

MDM
 MDM DEVELOPMENTS

The Gris

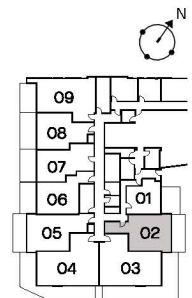
1 Bed + Den, 1 Bath

Interior 665 SF
 Exterior 163 SF
Total 828 SF



Porta

BELLEVILLE WATERFRONT LIVING



Floor 3

Floor plans are intended to give a general indication of the proposed layout only. Architectural, structural, and mechanical layouts are subject to change without notice. All materials, specifications, details and dimensions, if any, are approximate and subject to change by the Vendor without notice to the Purchaser in order to comply with building site conditions and municipal, structural, Vendor, and/or architectural requirements. Actual usable floor space may vary from the stated floor area in accordance with Bulletin 22 published by the Tarion Warranty Corporation. Bulkheads are not shown on this plan and may be located in areas of the Unit as required. All exterior spaces shown, if any, are exclusive use common elements shown for display purposes only and the location and size are subject to change by the Vendor without notice to the Purchaser. Window location, size and type may vary without notice to the Purchaser.

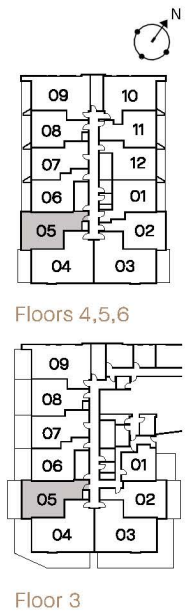
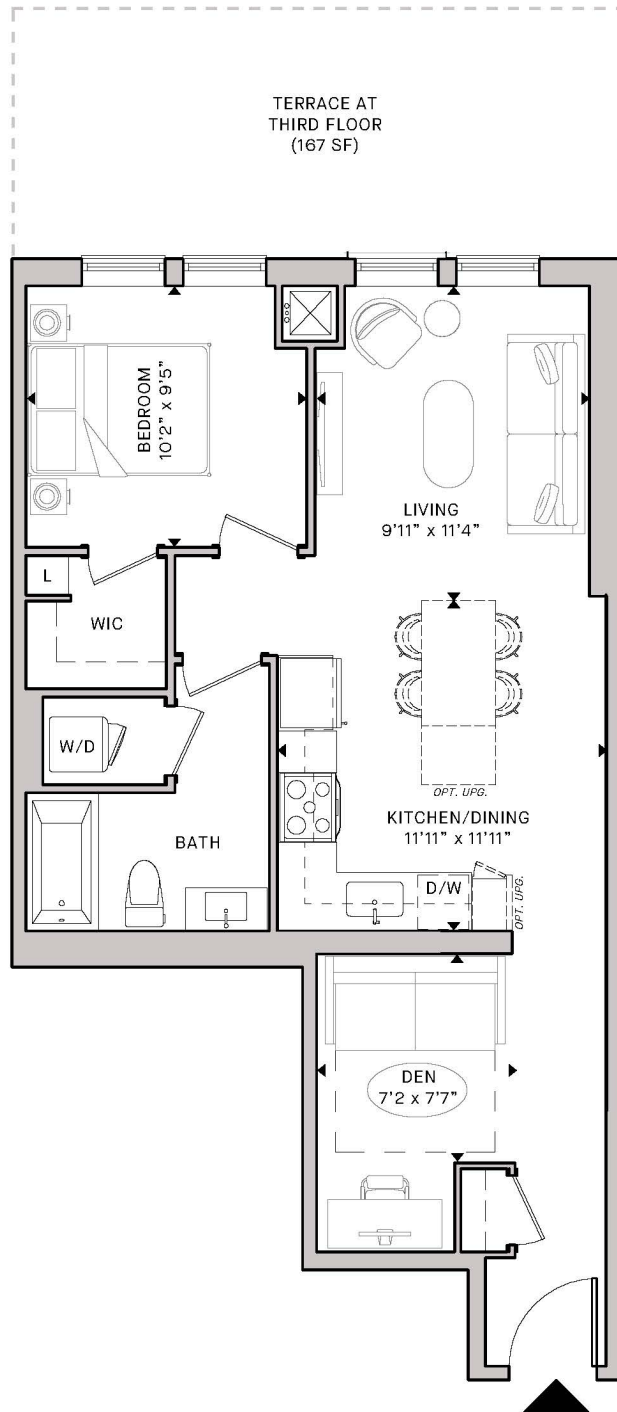
Certain floors may have less floor space due to thicker structural members, mechanical rooms, etc. This plan supersedes any marketing plan or material. Furniture and fixture representations are for illustration purposes only and do not reflect electrical plans for the suite. All suites are sold unfurnished. All measurements are calculated in accordance with industry accepted standards. All images and dimensions are not intended to form a part of any Agreement and are included for display purposes only. E.O.E. March 2023.



The Malbec

1 Bed + Den, 1 Bath

Interior 710 SF
 Exterior 0 SF
Total 710 SF



Porta

BELLEVILLE WATERFRONT LIVING

Floor plans are intended to give a general indication of the proposed layout only. Architectural, structural, and mechanical layouts are subject to change without notice. All materials, specifications, details and dimensions, if any, are approximate and subject to change by the Vendor without notice to the Purchaser in order to comply with building site conditions and municipal, structural, Vendor, and/or architectural requirements. Actual usable floor space may vary from the stated floor area in accordance with Bulletin 22 published by the Tarion Warranty Corporation. Bulkheads are not shown on this plan and may be located in areas of the Unit as required. All exterior spaces shown, if any, are exclusive use common elements shown for display purposes only and the location and size are subject to change by the Vendor without notice to the Purchaser. Window location, size and type may vary without notice to the Purchaser.

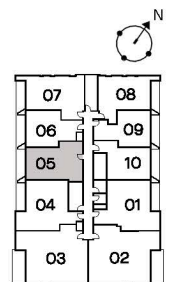
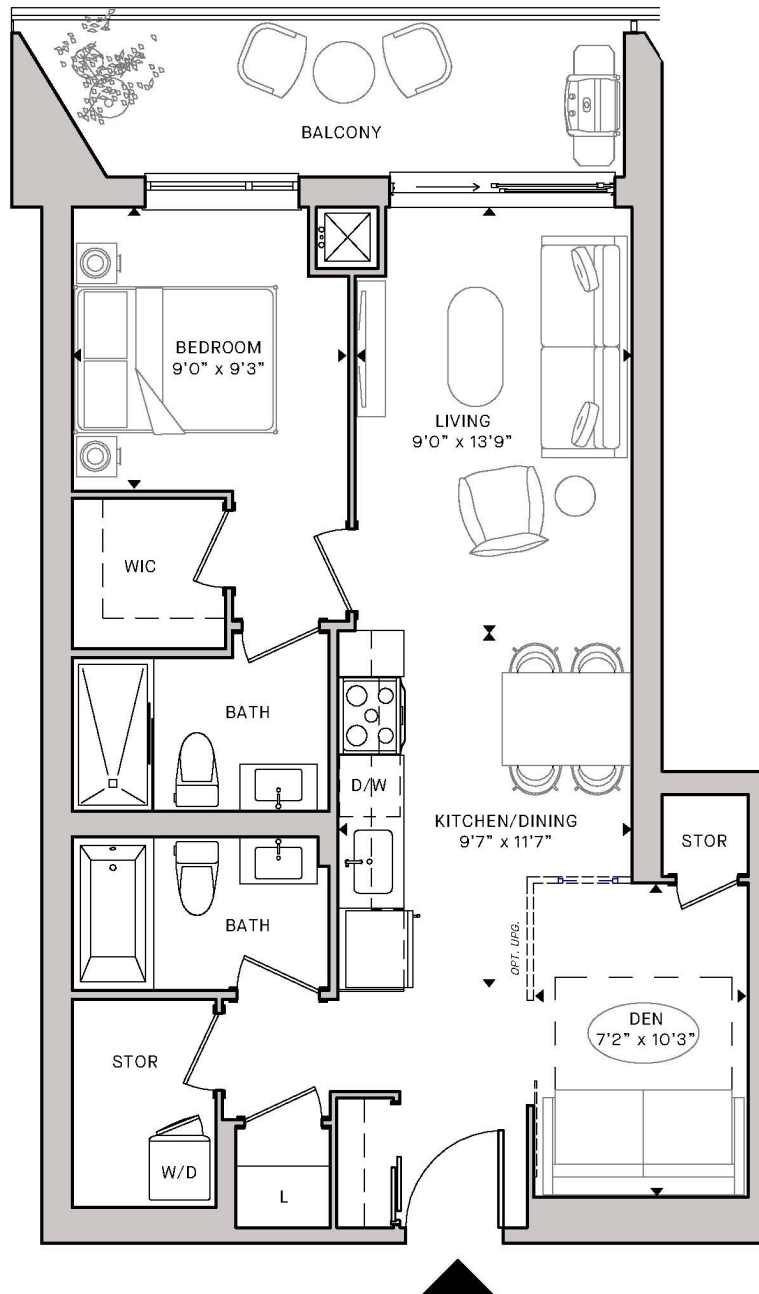
Certain floors may have less floor space due to thicker structural members, mechanical rooms, etc. This plan supersedes any marketing plan or material. Furniture and fixture representations are for illustration purposes only and do not reflect electrical plans for the suite. All suites are sold unfurnished. All measurements are calculated in accordance with industry accepted standards. All images and dimensions are not intended to form a part of any Agreement and are included for display purposes only. E.O.E. March 2023.

MDM
 MDM DEVELOPMENTS

The Riesling

1 Bed + Den, 2 Bath

Interior 734 SF
 Exterior 104 SF
Total 838 SF



Floors 7,8,9,10,11

Porta

BELLEVILLE WATERFRONT LIVING

Floor plans are intended to give a general indication of the proposed layout only. Architectural, structural, and mechanical layouts are subject to change without notice. All materials, specifications, details and dimensions, if any, are approximate and subject to change by the Vendor without notice to the Purchaser in order to comply with building site conditions and municipal, structural, Vendor, and/or architectural requirements. Actual usable floor space may vary from the stated floor area in accordance with Bulletin 22 published by the Tarion Warranty Corporation. Bulkheads are not shown on this plan and may be located in areas of the Unit as required. All exterior spaces shown, if any, are exclusive use common elements shown for display purposes only and the location and size are subject to change by the Vendor without notice to the Purchaser. Window location, size and type may vary without notice to the Purchaser.

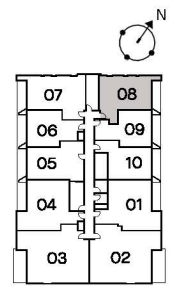
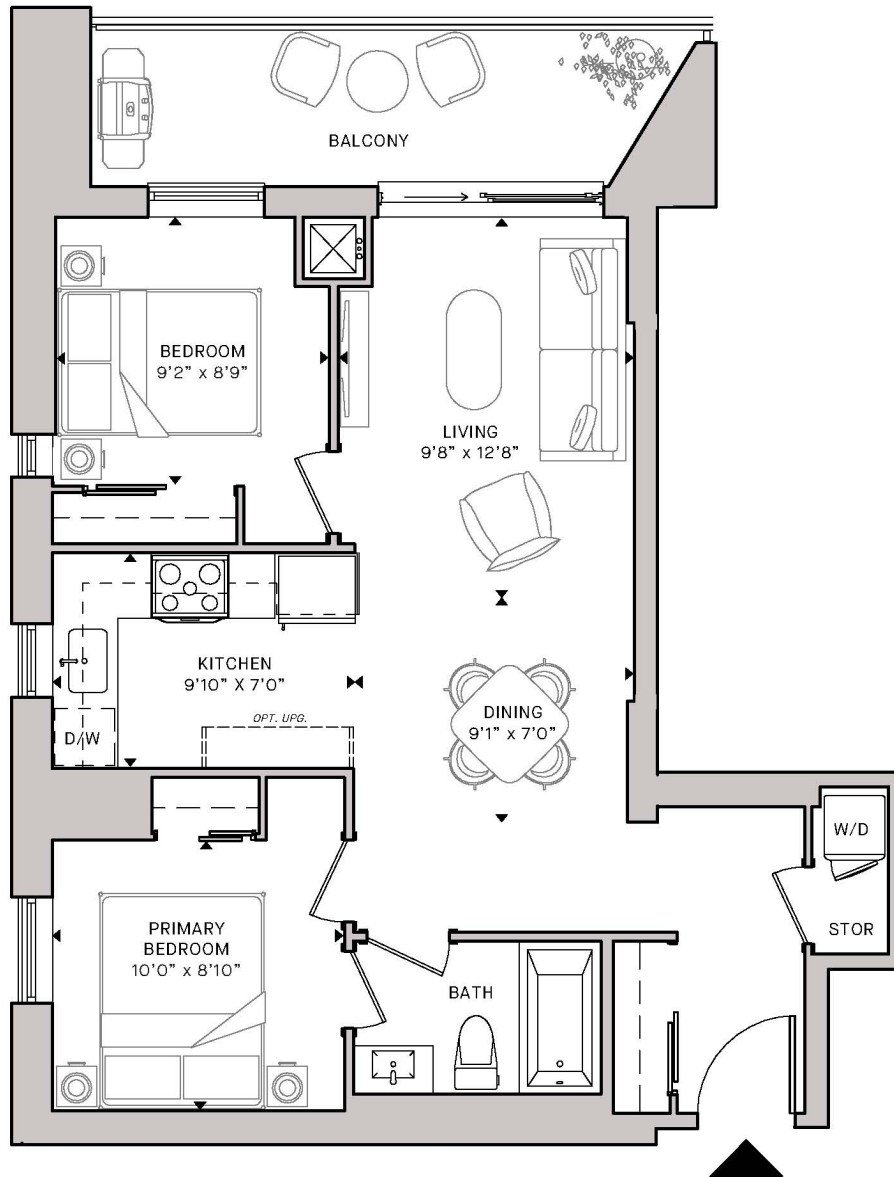
Certain floors may have less floor space due to thicker structural members, mechanical rooms, etc. This plan supersedes any marketing plan or material. Furniture and fixture representations are for illustration purposes only and do not reflect electrical plans for the suite. All suites are sold unfurnished. All measurements are calculated in accordance with industry accepted standards. All images and dimensions are not intended to form a part of any Agreement and are included for display purposes only. E.O.E. March 2023.

MDM
 MDM DEVELOPMENTS

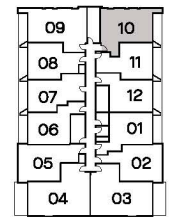
The Merlot

2 Bed, 1 Bath

Interior 740 SF
 Exterior 108 SF
Total 848 SF



Floors 7,8,9,10,11



Floors 4,5,6

Porta

BELLEVILLE WATERFRONT LIVING

Floor plans are intended to give a general indication of the proposed layout only. Architectural, structural, and mechanical layouts are subject to change without notice. All materials, specifications, details and dimensions, if any, are approximate and subject to change by the Vendor without notice to the Purchaser in order to comply with building site conditions and municipal, structural, Vendor, and/or architectural requirements. Actual usable floor space may vary from the stated floor area in accordance with Bulletin 22 published by the Tarion Warranty Corporation. Bulkheads are not shown on this plan and may be located in areas of the Unit as required. All exterior spaces shown, if any, are exclusive use common elements shown for display purposes only and the location and size are subject to change by the Vendor without notice to the Purchaser. Window location, size and type may vary without notice to the Purchaser.

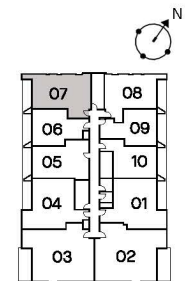
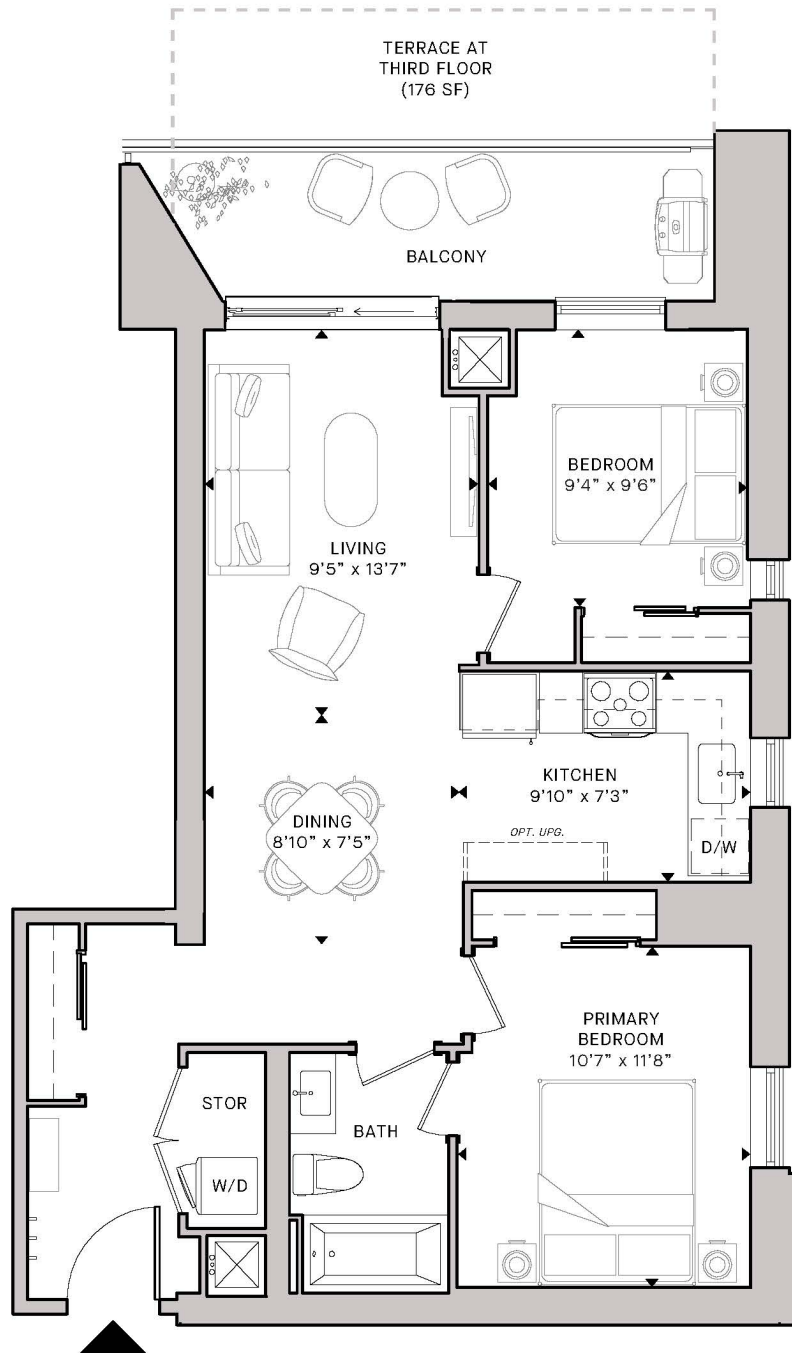
Certain floors may have less floor space due to thicker structural members, mechanical rooms, etc. This plan supersedes any marketing plan or material. Furniture and fixture representations are for illustration purposes only and do not reflect electrical plans for the suite. All suites are sold unfurnished. All measurements are calculated in accordance with industry accepted standards. All images and dimensions are not intended to form a part of any Agreement and are included for display purposes only. E.O.E. March 2023.



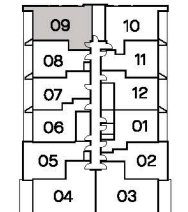
The Gamay

2 Bed, 1 Bath

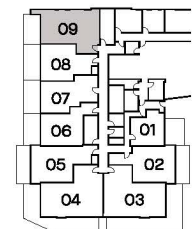
Interior 823 SF
 Exterior 108 SF
Total 931 SF



Floors 7,8,9,10,11



Floors 4,5,6



Floor 3

Porta

BELLEVILLE WATERFRONT LIVING

Floor plans are intended to give a general indication of the proposed layout only. Architectural, structural, and mechanical layouts are subject to change without notice. All materials, specifications, details and dimensions, if any, are approximate and subject to change by the Vendor without notice to the Purchaser in order to comply with building site conditions and municipal, structural, Vendor, and/or architectural requirements. Actual usable floor space may vary from the stated floor area. In accordance with Bulletin 22 published by the Tarion Warranty Corporation, Bulkheads are not shown on this plan and may be located in areas of the Unit as required. All exterior spaces shown, if any, are exclusive use common elements shown for display purposes only and the location and size are subject to change by the Vendor without notice to the Purchaser. Window location, size and type may vary without notice to the Purchaser.

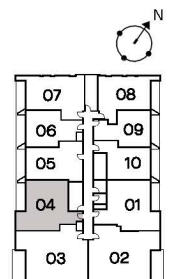
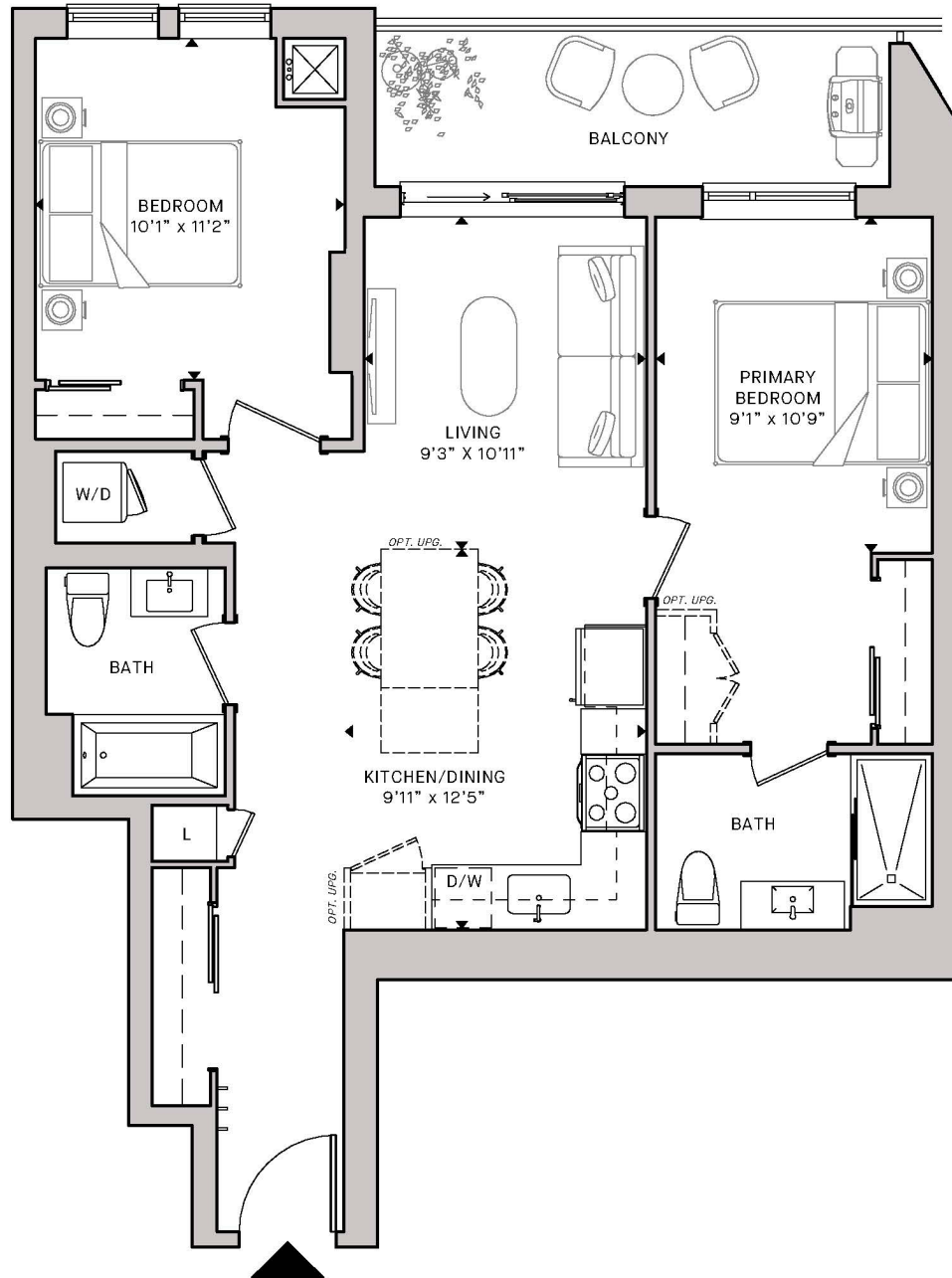
Certain floors may have less floor space due to thicker structural members, mechanical rooms, etc. This plan supersedes any marketing plan or material. Furniture and fixture representations are for illustration purposes only and do not reflect electrical plans for the suite. All suites are sold unfurnished. All measurements are calculated in accordance with industry accepted standards. All images and dimensions are not intended to form a part of any Agreement and are included for display purposes only. E.O.E. March 2023.

MDM
 MDM DEVELOPMENTS

The Zinfandel

2 Bed, 2 Bath

Interior 890 SF
 Exterior 87 SF
Total 977 SF



Floors 7,8,9,10,11

Porta

BELLEVILLE WATERFRONT LIVING

Floor plans are intended to give a general indication of the proposed layout only. Architectural, structural, and mechanical layouts are subject to change without notice. All materials, specifications, details and dimensions, if any, are approximate and subject to change by the Vendor without notice to the Purchaser in order to comply with building site conditions and municipal, structural, Vendor, and/or architectural requirements. Actual usable floor space may vary from the stated floor area in accordance with Bulletin 22 published by the Tarion Warranty Corporation. Bulkheads are not shown on this plan and may be located in areas of the Unit as required. All exterior spaces shown, if any, are exclusive use common elements shown for display purposes only and the location and size are subject to change by the Vendor without notice to the Purchaser. Window location, size and type may vary without notice to the Purchaser.

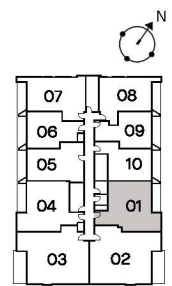
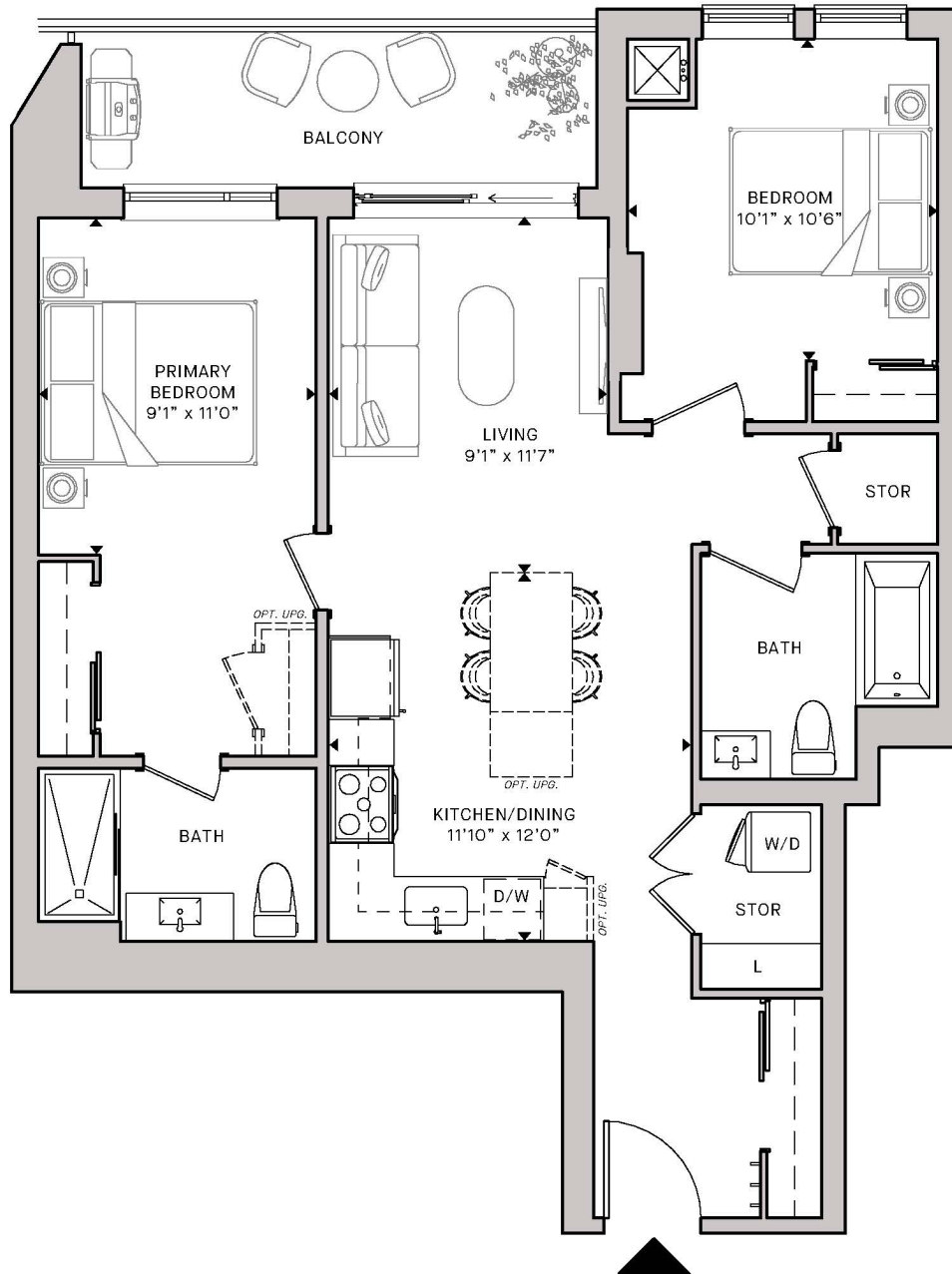
Certain floors may have less floor space due to thicker structural members, mechanical rooms, etc. This plan supersedes any marketing plan or material. Furniture and fixture representations are for illustration purposes only and do not reflect electrical plans for the suite. All suites are sold unfurnished. All measurements are calculated in accordance with industry accepted standards. All images and dimensions are not intended to form a part of any Agreement and are included for display purposes only. E.O.E. March 2023.

MDM
 MDM DEVELOPMENTS

The Cava

2 Bed, 2 Bath

Interior 898 SF
 Exterior 87 SF
Total 985 SF



Floors 7,8,9,10,11
 Accessible Suites

Porta

BELLEVILLE WATERFRONT LIVING

Floor plans are intended to give a general indication of the proposed layout only. Architectural, structural, and mechanical layouts are subject to change without notice. All materials, specifications, details and dimensions, if any, are approximate and subject to change by the Vendor without notice to the Purchaser in order to comply with building site conditions and municipal, structural, Vendor, and/or architectural requirements. Actual usable floor space may vary from the stated floor area in accordance with Bulletin 22 published by the Tarion Warranty Corporation. Bulkheads are not shown on this plan and may be located in areas of the Unit as required. All exterior spaces shown, if any, are exclusive use common elements shown for display purposes only and the location and size are subject to change by the Vendor without notice to the Purchaser. Window location, size and type may vary without notice to the Purchaser.

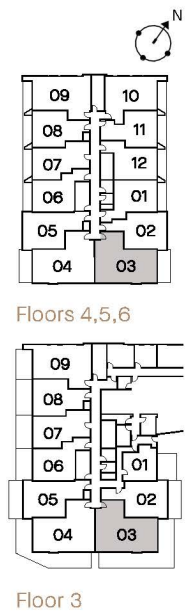
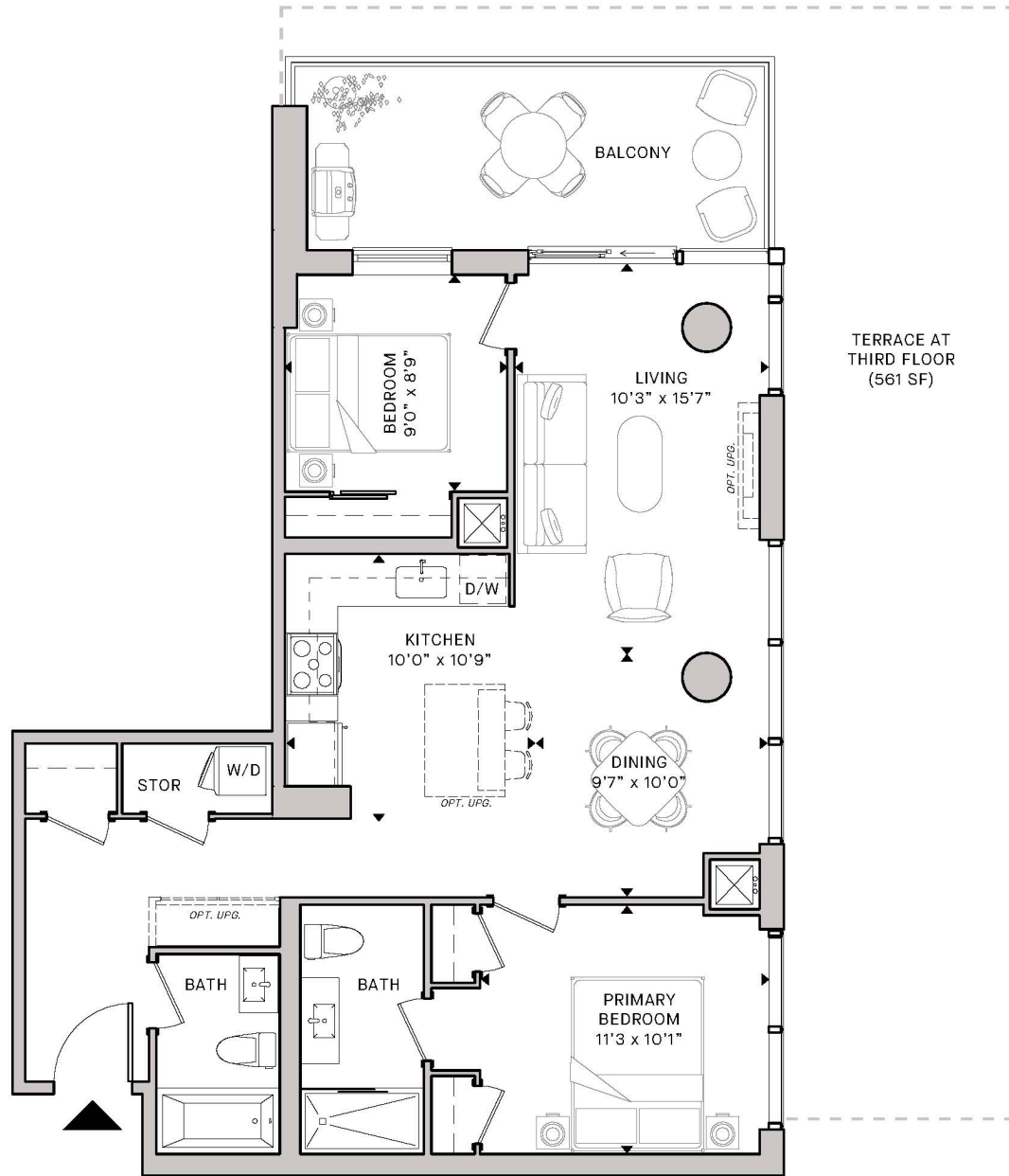
Certain floors may have less floor space due to thicker structural members, mechanical rooms, etc. This plan supersedes any marketing plan or material. Furniture and fixture representations are for illustration purposes only and do not reflect electrical plans for the suite. All suites are sold unfurnished. All measurements are calculated in accordance with industry accepted standards. All images and dimensions are not intended to form a part of any Agreement and are included for display purposes only. E.O.E. March 2023.

MDM
 MDM DEVELOPMENTS

The Rosé

2 Bed, 2 Bath

Interior 924 SF
 Exterior 138 SF
Total 1062 SF



Porta

BELLEVILLE WATERFRONT LIVING

Floor plans are intended to give a general indication of the proposed layout only. Architectural, structural, and mechanical layouts are subject to change without notice. All materials, specifications, details and dimensions, if any, are approximate and subject to change by the Vendor without notice to the Purchaser in order to comply with building site conditions and municipal, structural, Vendor, and/or architectural requirements. Actual usable floor space may vary from the stated floor area in accordance with Bulletin 22 published by the Tarion Warranty Corporation. Bulkheads are not shown on this plan and may be located in areas of the Unit as required. All exterior spaces shown, if any, are exclusive use common elements shown for display purposes only and the location and size are subject to change by the Vendor without notice to the Purchaser. Window location, size and type may vary without notice to the Purchaser.

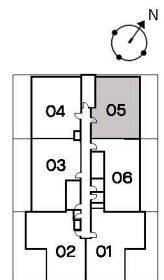
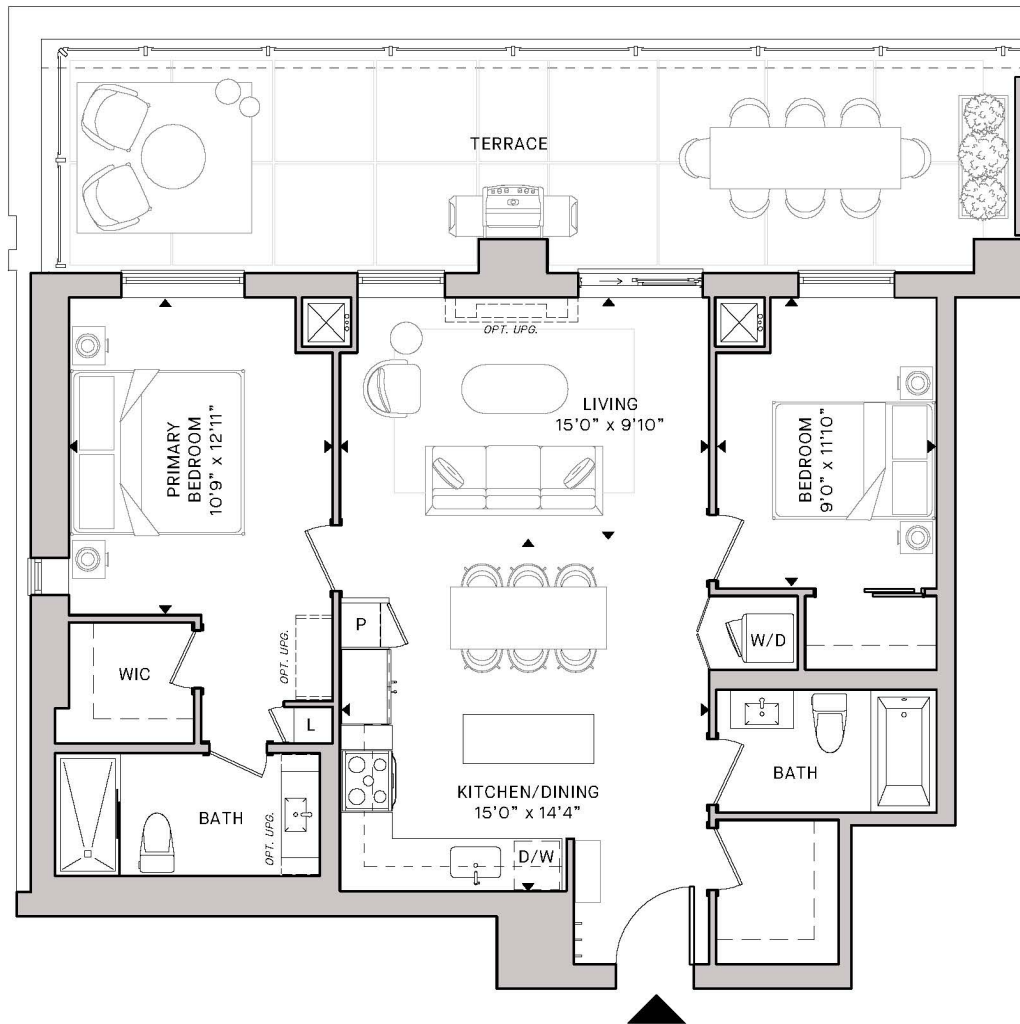
Certain floors may have less floor space due to thicker structural members, mechanical rooms, etc. This plan supersedes any marketing plan or material. Furniture and fixture representations are for illustration purposes only and do not reflect electrical plans for the suite. All suites are sold unfurnished. All measurements are calculated in accordance with industry accepted standards. All images and dimensions are not intended to form a part of any Agreement and are included for display purposes only. E.O.E. March 2023.

MDM
 MDM DEVELOPMENTS

The Baco

2 Bed, 2 Bath

Interior 1004 SF
 Exterior 370 SF
Total 1374 SF



Floor 12

Porta

BELLEVILLE WATERFRONT LIVING

Floor plans are intended to give a general indication of the proposed layout only. Architectural, structural, and mechanical layouts are subject to change without notice. All materials, specifications, details and dimensions, if any, are approximate and subject to change by the Vendor without notice to the Purchaser in order to comply with building site conditions and municipal, structural, Vendor, and/or architectural requirements. Actual usable floor space may vary from the stated floor area in accordance with Bulletin 22 published by the Tarion Warranty Corporation. Bulkheads are not shown on this plan and may be located in areas of the Unit as required. All exterior spaces shown, if any, are exclusive use common elements shown for display purposes only and the location and size are subject to change by the Vendor without notice to the Purchaser. Window location, size and type may vary without notice to the Purchaser.

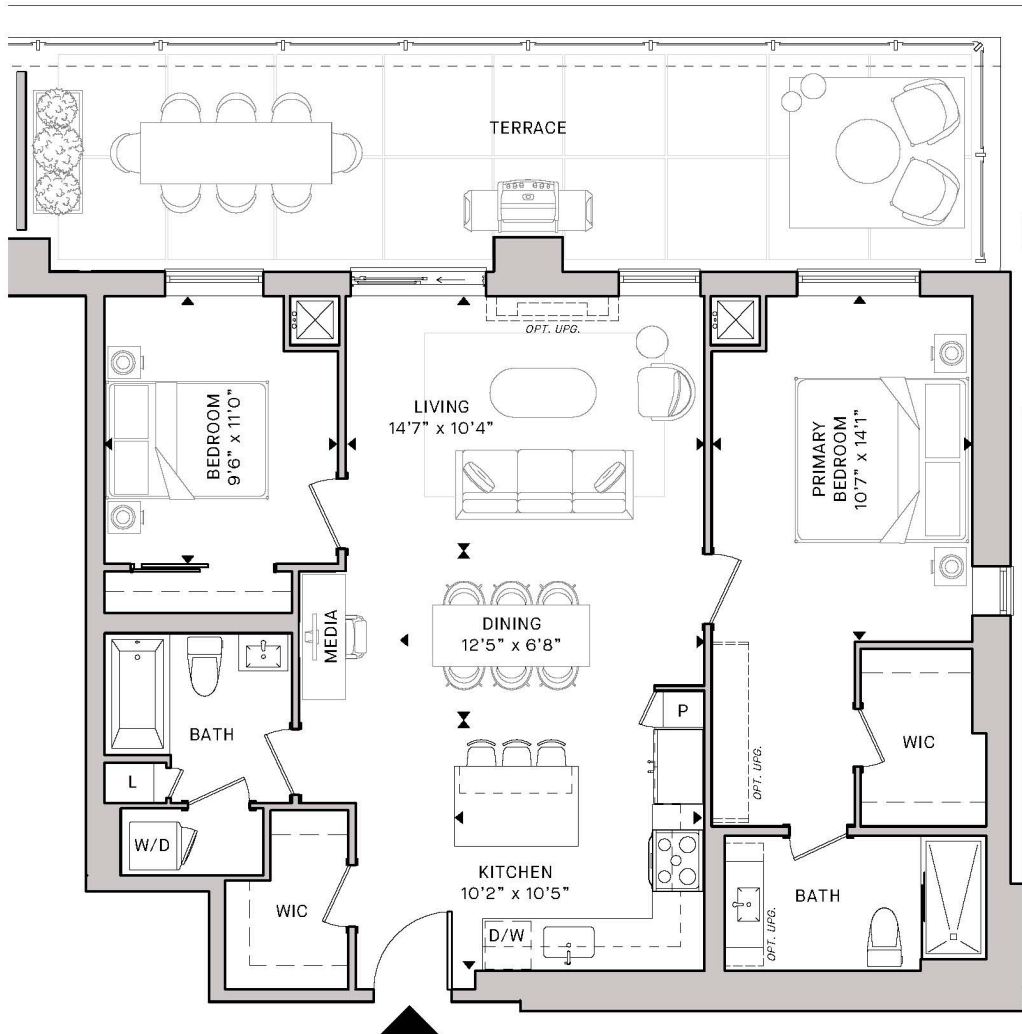
Certain floors may have less floor space due to thicker structural members, mechanical rooms, etc. This plan supersedes any marketing plan or material. Furniture and fixture representations are for illustration purposes only and do not reflect electrical plans for the suite. All suites are sold unfurnished. All measurements are calculated in accordance with industry accepted standards. All images and dimensions are not intended to form a part of any Agreement and are included for display purposes only. E.O.E. March 2023.

MDM
 MDM DEVELOPMENTS

The Grenache

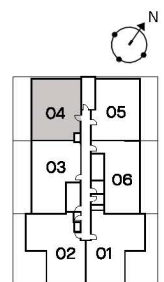
2 Bed + Media, 2 Bath

Interior 1103 SF
 Exterior 370 SF
Total 1473 SF



Porta

BELLEVILLE WATERFRONT LIVING



Floor 12

Floor plans are intended to give a general indication of the proposed layout only. Architectural, structural, and mechanical layouts are subject to change without notice. All materials, specifications, details and dimensions, if any, are approximate and subject to change by the Vendor without notice to the Purchaser in order to comply with building site conditions and municipal, structural, Vendor, and/or architectural requirements. Actual usable floor space may vary from the stated floor area in accordance with Bulletin 22 published by the Tarion Warranty Corporation. Bulkheads are not shown on this plan and may be located in areas of the Unit as required. All exterior spaces shown, if any, are exclusive use common elements shown for display purposes only and the location and size are subject to change by the Vendor without notice to the Purchaser. Window location, size and type may vary without notice to the Purchaser.

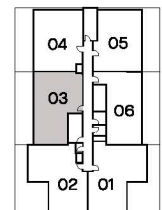
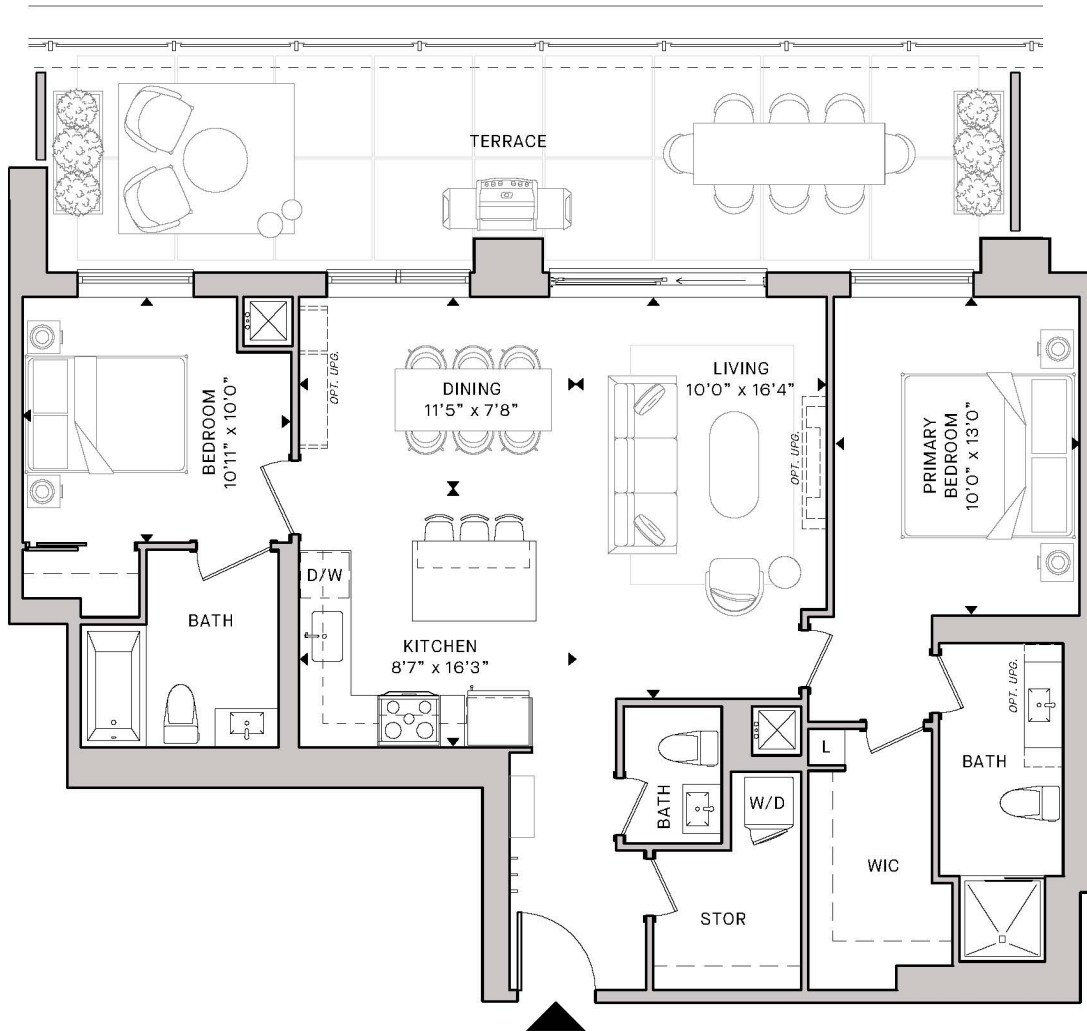
Certain floors may have less floor space due to thicker structural members, mechanical rooms, etc. This plan supersedes any marketing plan or material. Furniture and fixture representations are for illustration purposes only and do not reflect electrical plans for the suite. All suites are sold unfurnished. All measurements are calculated in accordance with industry accepted standards. All images and dimensions are not intended to form a part of any Agreement and are included for display purposes only. E.O.E. March 2023.

MDM
 MDM DEVELOPMENTS

The Noir

2 Bed, 2.5 Bath

Interior 1117 SF
 Exterior 374 SF
Total 1491 SF



Floor 12
 Accessible Suites

Porta

BELLEVILLE WATERFRONT LIVING

Floor plans are intended to give a general indication of the proposed layout only. Architectural, structural, and mechanical layouts are subject to change without notice. All materials, specifications, details and dimensions, if any, are approximate and subject to change by the Vendor without notice to the Purchaser in order to comply with building site conditions and municipal, structural, Vendor, and/or architectural requirements. Actual usable floor space may vary from the stated floor area in accordance with Bulletin 22 published by the Tarion Warranty Corporation. Bulkheads are not shown on this plan and may be located in areas of the Unit as required. All exterior spaces shown, if any, are exclusive use common elements shown for display purposes only and the location and size are subject to change by the Vendor without notice to the Purchaser. Window location, size and type may vary without notice to the Purchaser.

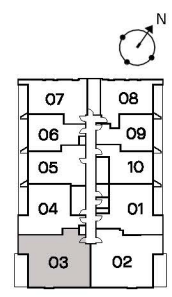
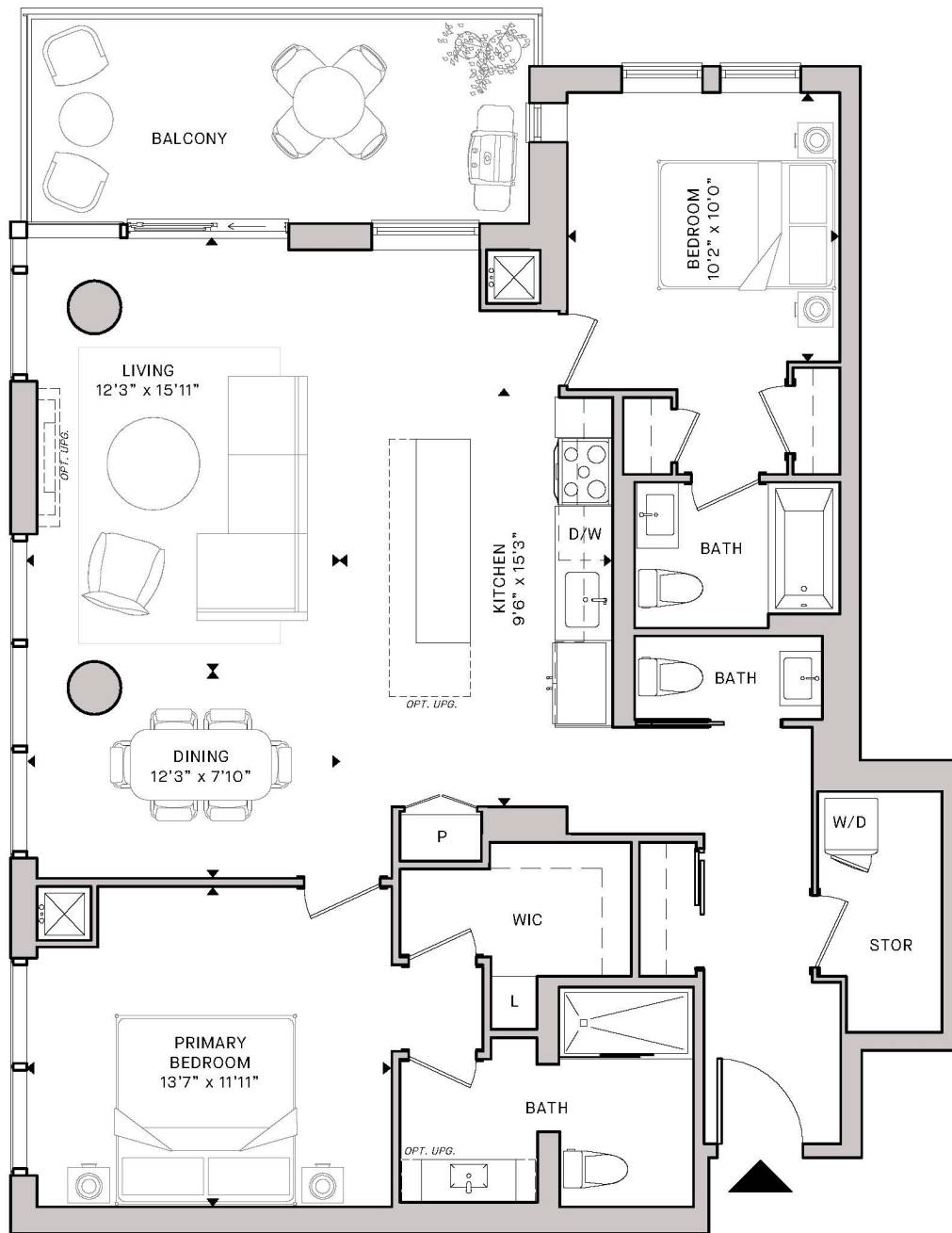
Certain floors may have less floor space due to thicker structural members, mechanical rooms, etc. This plan supersedes any marketing plan or material. Furniture and fixture representations are for illustration purposes only and do not reflect electrical plans for the suite. All suites are sold unfurnished. All measurements are calculated in accordance with industry accepted standards. All images and dimensions are not intended to form a part of any Agreement and are included for display purposes only. E.O.E. March 2023.

MDM
 MDM DEVELOPMENTS

The Cabernet

2 Bed, 2.5 Bath

Interior 1253 SF
 Exterior 141 SF
Total 1394 SF



Floors 7,8,9,10,11

Porta

BELLEVILLE WATERFRONT LIVING

Floor plans are intended to give a general indication of the proposed layout only. Architectural, structural, and mechanical layouts are subject to change without notice. All materials, specifications, details and dimensions, if any, are approximate and subject to change by the Vendor without notice to the Purchaser in order to comply with building site conditions and municipal, structural, Vendor, and/or architectural requirements. Actual usable floor space may vary from the stated floor area in accordance with Bulletin 22 published by the Tarion Warranty Corporation. Bulkheads are not shown on this plan and may be located in areas of the Unit as required. All exterior spaces shown, if any, are exclusive use common elements shown for display purposes only and the location and size are subject to change by the Vendor without notice to the Purchaser. Window location, size and type may vary without notice to the Purchaser.

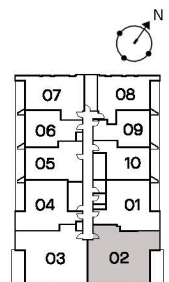
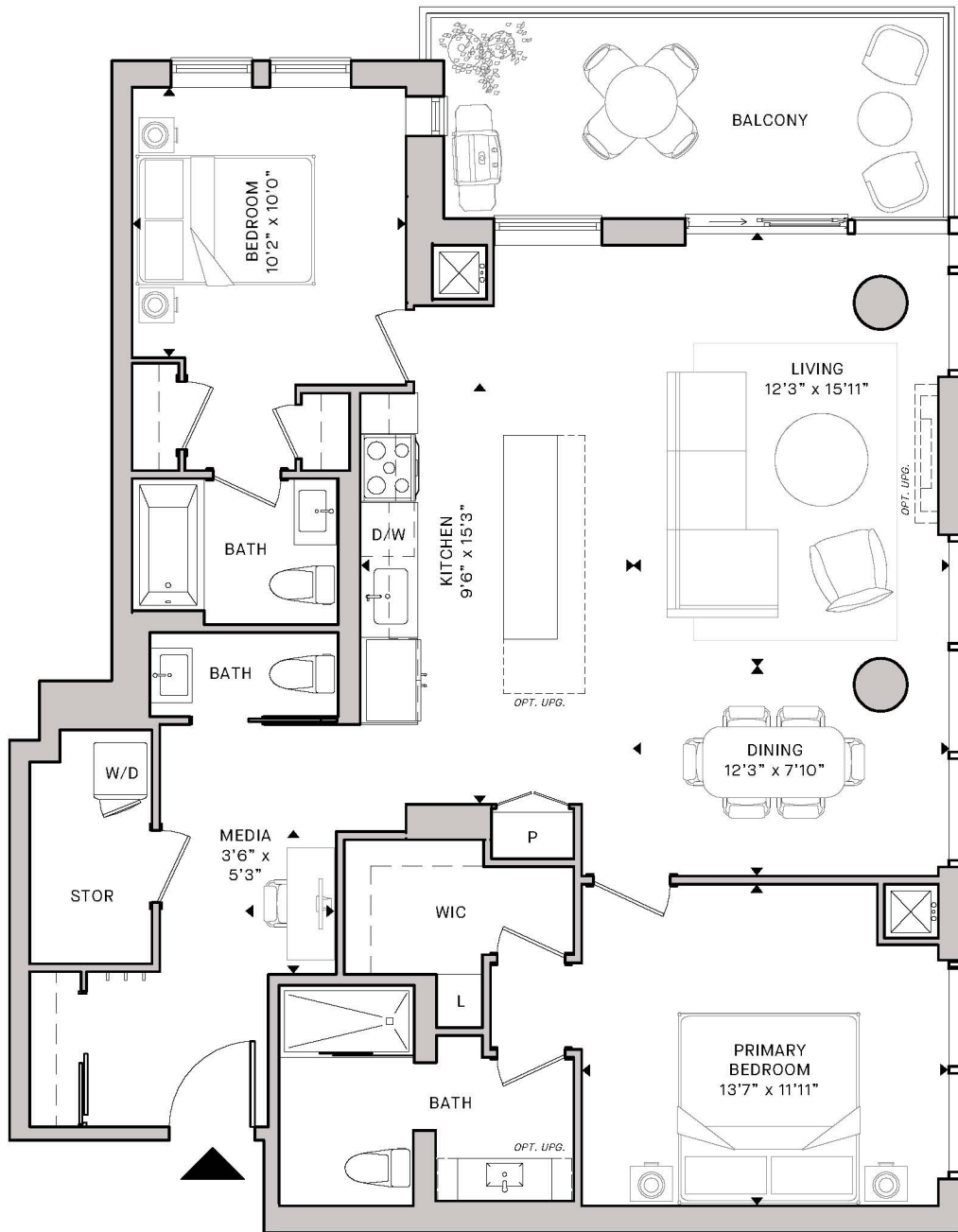
Certain floors may have less floor space due to thicker structural members, mechanical rooms, etc. This plan supersedes any marketing plan or material. Furniture and fixture representations are for illustration purposes only and do not reflect electrical plans for the suite. All suites are sold unfurnished. All measurements are calculated in accordance with industry accepted standards. All images and dimensions are not intended to form a part of any Agreement and are included for display purposes only. E.O.E. March 2023.



The Chardonnay

2 Bed, 2.5 Bath

Interior 1268 SF
 Exterior 138 SF
Total 1406 SF



Floors 7,8,9,10,11

Porta

BELLEVILLE WATERFRONT LIVING

Floor plans are intended to give a general indication of the proposed layout only. Architectural, structural, and mechanical layouts are subject to change without notice. All materials, specifications, details and dimensions, if any, are approximate and subject to change by the Vendor without notice to the Purchaser in order to comply with building site conditions and municipal, structural, Vendor, and/or architectural requirements. Actual usable floor space may vary from the stated floor area in accordance with Bulletin 22 published by the Tarion Warranty Corporation. Bulkheads are not shown on this plan and may be located in areas of the Unit as required. All exterior spaces shown, if any, are exclusive use common elements shown for display purposes only and the location and size are subject to change by the Vendor without notice to the Purchaser. Window location, size and type may vary without notice to the Purchaser.

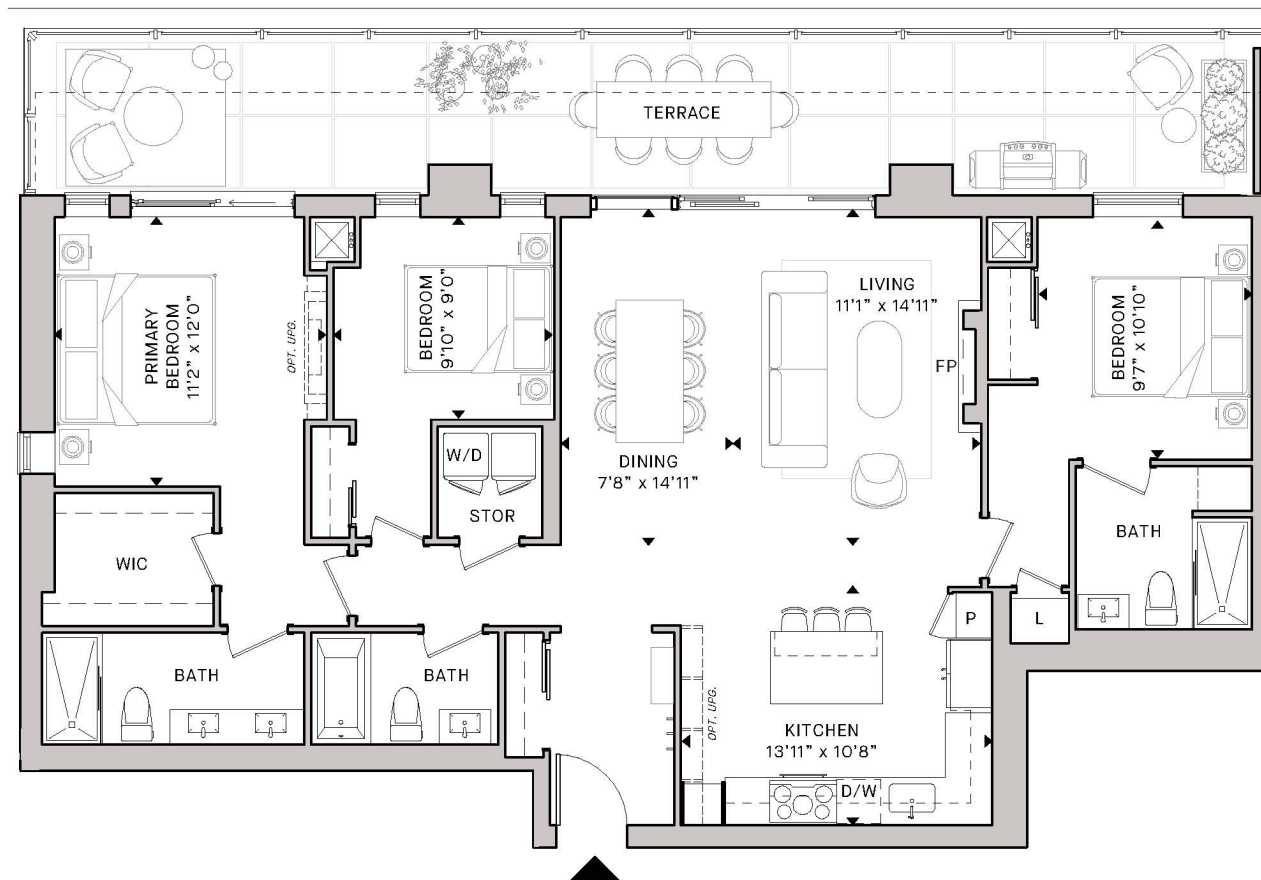
Certain floors may have less floor space due to thicker structural members, mechanical rooms, etc. This plan supersedes any marketing plan or material. Furniture and fixture representations are for illustration purposes only and do not reflect electrical plans for the suite. All suites are sold unfurnished. All measurements are calculated in accordance with industry accepted standards. All images and dimensions are not intended to form a part of any Agreement and are included for display purposes only. E.O.E. March 2023.

MDM
 MDM DEVELOPMENTS

The Amarone

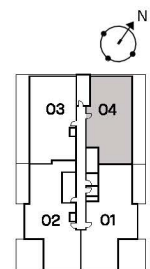
3 Bed, 3 Bath

Interior 1479 SF
 Exterior 412 SF
Total 1891 SF



Porta

BELLEVILLE WATERFRONT LIVING



Floor 13
 Accessible Suites

Floor plans are intended to give a general indication of the proposed layout only. Architectural, structural, and mechanical layouts are subject to change without notice. All materials, specifications, details and dimensions, if any, are approximate and subject to change by the Vendor without notice to the Purchaser in order to comply with building site conditions and municipal, structural, Vendor, and/or architectural requirements. Actual usable floor space may vary from the stated floor area in accordance with Bulletin 22 published by the Tarion Warranty Corporation. Bulkheads are not shown on this plan and may be located in areas of the Unit as required. All exterior spaces shown, if any, are exclusive use common elements shown for display purposes only and the location and size are subject to change by the Vendor without notice to the Purchaser. Window location, size and type may vary without notice to the Purchaser.

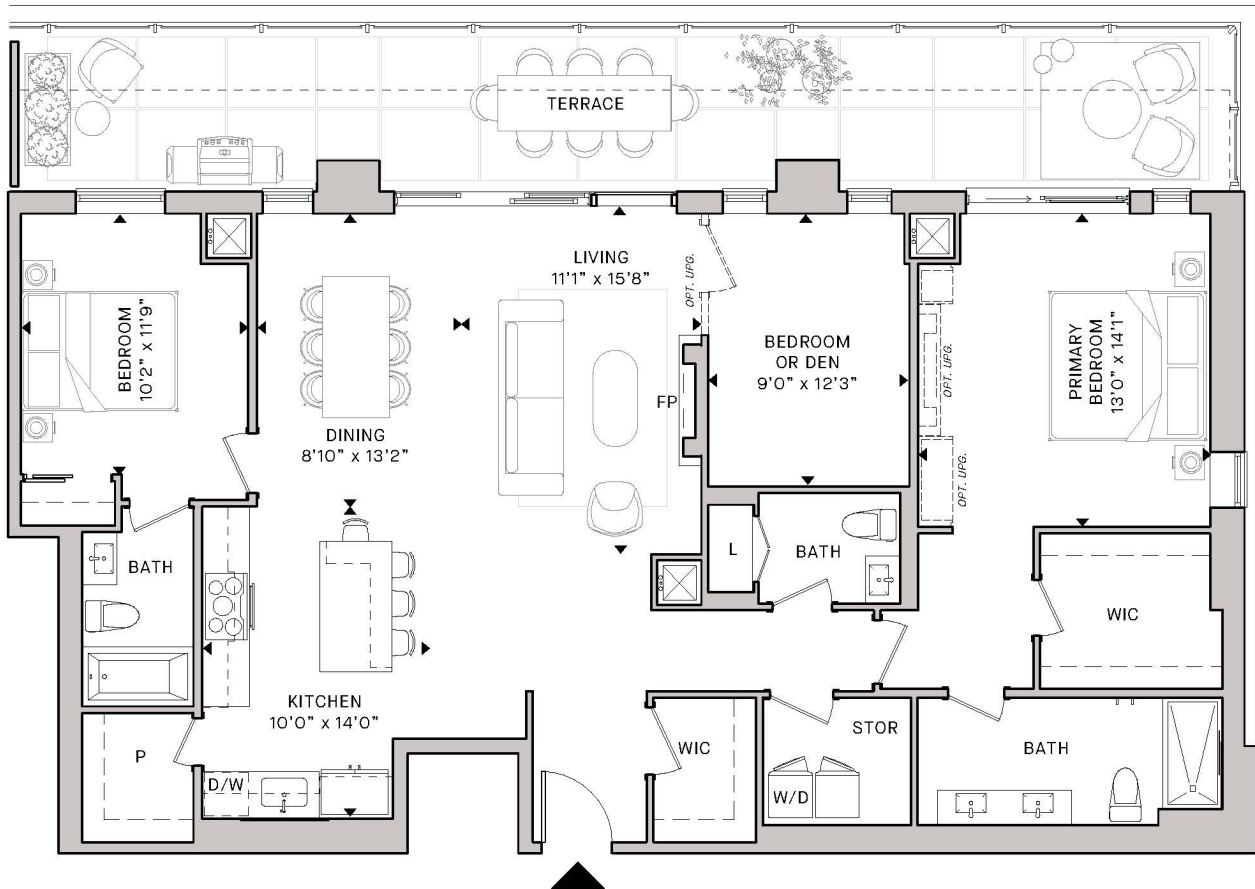
Certain floors may have less floor space due to thicker structural members, mechanical rooms, etc. This plan supersedes any marketing plan or material. Furniture and fixture representations are for illustration purposes only and do not reflect electrical plans for the suite. All suites are sold unfurnished. All measurements are calculated in accordance with industry accepted standards. All images and dimensions are not intended to form a part of any Agreement and are included for display purposes only. E.O.E. March 2023.

MDM
 MDM DEVELOPMENTS

The Champagne

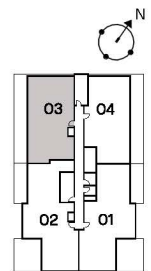
3 Bed, 2.5 Bath

Interior 1605 SF
 Exterior 412 SF
Total 2017 SF



Porta

BELLEVILLE WATERFRONT LIVING



Floor 13

Floor plans are intended to give a general indication of the proposed layout only. Architectural, structural, and mechanical layouts are subject to change without notice. All materials, specifications, details and dimensions, if any, are approximate and subject to change by the Vendor without notice to the Purchaser in order to comply with building site conditions and municipal, structural, Vendor, and/or architectural requirements. Actual usable floor space may vary from the stated floor area in accordance with Bulletin 22 published by the Tarion Warranty Corporation. Bulkheads are not shown on this plan and may be located in areas of the Unit as required. All exterior spaces shown, if any, are exclusive use common elements shown for display purposes only and the location and size are subject to change by the Vendor without notice to the Purchaser. Window location, size and type may vary without notice to the Purchaser.

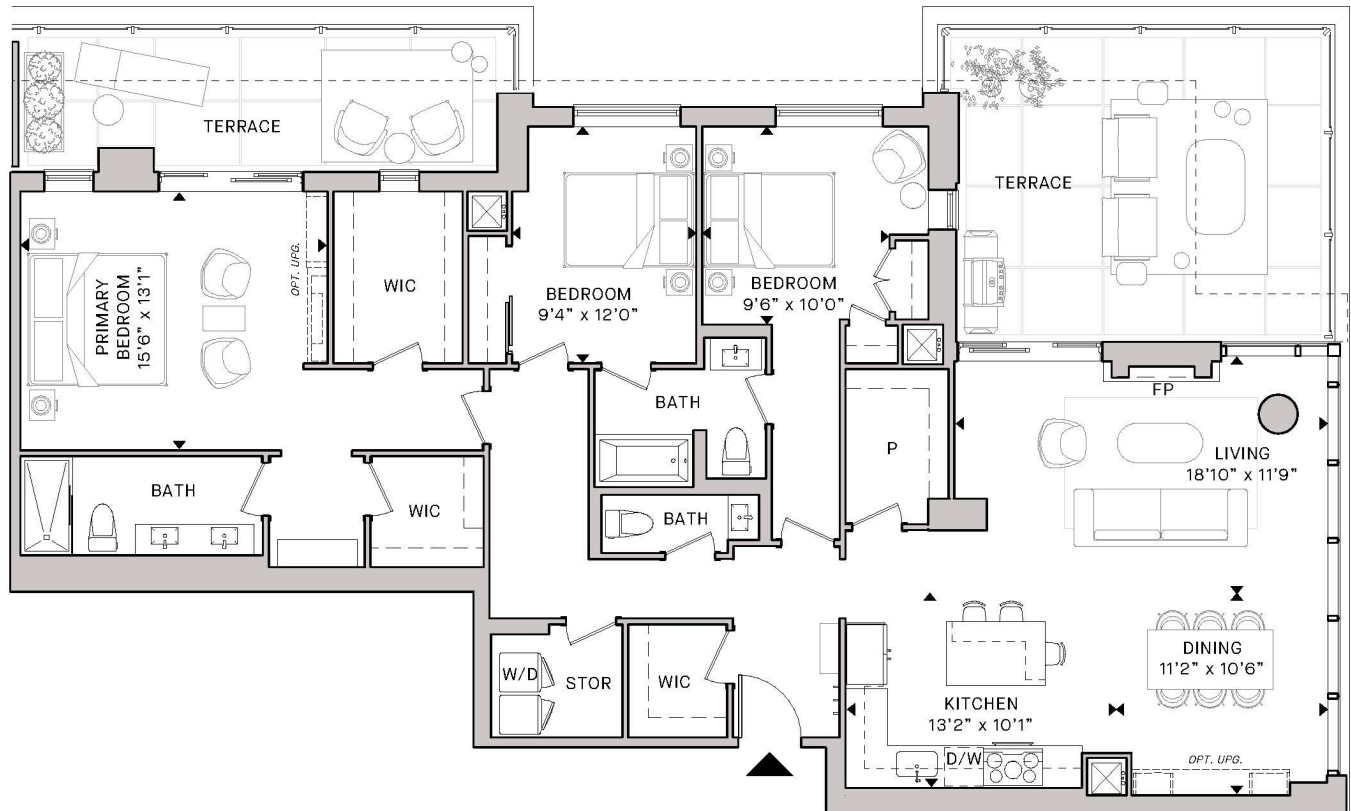
Certain floors may have less floor space due to thicker structural members, mechanical rooms, etc. This plan supersedes any marketing plan or material. Furniture and fixture representations are for illustration purposes only and do not reflect electrical plans for the suite. All suites are sold unfurnished. All measurements are calculated in accordance with industry accepted standards. All images and dimensions are not intended to form a part of any Agreement and are included for display purposes only. E.O.E. March 2023.



The Reserve

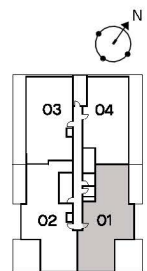
3 Bed, 2.5 Bath

Interior 1767 SF
 Exterior 498 SF
Total 2265 SF



Porta

BELLEVILLE WATERFRONT LIVING



Floor 13

Floor plans are intended to give a general indication of the proposed layout only. Architectural, structural, and mechanical layouts are subject to change without notice. All materials, specifications, details and dimensions, if any, are approximate and subject to change by the Vendor without notice to the Purchaser in order to comply with building site conditions and municipal, structural, Vendor, and/or architectural requirements. Actual usable floor space may vary from the stated floor area in accordance with Bulletin 22 published by the Tarion Warranty Corporation. Bulkheads are not shown on this plan and may be located in areas of the Unit as required. All exterior spaces shown, if any, are exclusive use common elements shown for display purposes only and the location and size are subject to change by the Vendor without notice to the Purchaser. Window location, size and type may vary without notice to the Purchaser.

Certain floors may have less floor space due to thicker structural members, mechanical rooms, etc. This plan supersedes any marketing plan or material. Furniture and fixture representations are for illustration purposes only and do not reflect electrical plans for the suite. All suites are sold unfurnished. All measurements are calculated in accordance with industry accepted standards. All images and dimensions are not intended to form a part of any Agreement and are included for display purposes only. E.O.E. March 2023.

MDM
 MDM DEVELOPMENTS