



# UPPER VISTA

LUXURY HOMES ON THE MUSKOKA RIVER

## FLOOR PLANS

METICULOUSLY *Designed* TO ENHANCE YOUR *Lifestyle.*





UPPER VISTA

LUXURY HOMES ON THE MUSKOKA RIVER

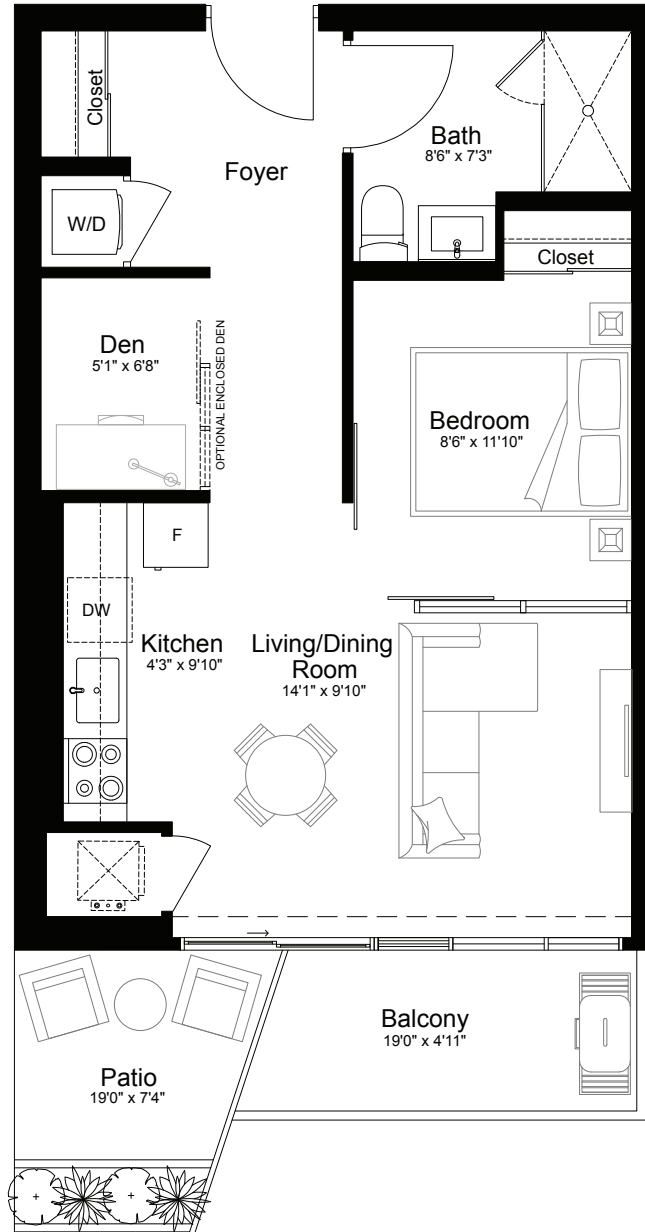
# ARBOUR

1 Bed 1 Bath 1 Den

Suite 567 SF

Outdoor 143 SF Terrace **OR** 96 SF Balcony

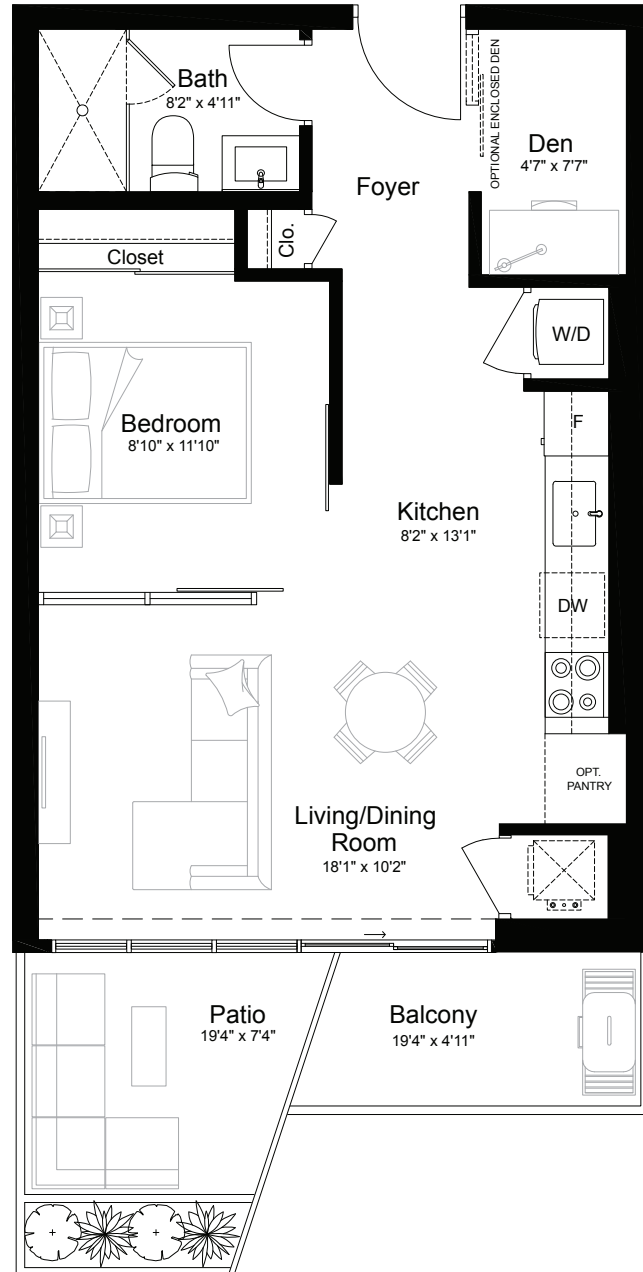
South View **OR** North View



EVERTRUST

DEVELOPMENT GROUP CANADA INC.

The floor plans shown are for illustrative purposes only and are intended to convey the concept and vision for the unit. Details, dimensions, sizes, specifications, layouts and materials are approximate and are subject to change without notice. The size, location and/or configuration of all content depicted within may be changed, varied or mirrored. Furniture, kitchen islands and dashed walls are representational only and do not form any part of any contract document. Actual usable floor space and balcony sizes may vary from that stated per plan. Pricing and availability are subject to change without notice. Please refer solely to the floor plan that is in your agreement. E.&O.E.s





UPPER VISTA

LUXURY HOMES ON THE MUSKOKA RIVER

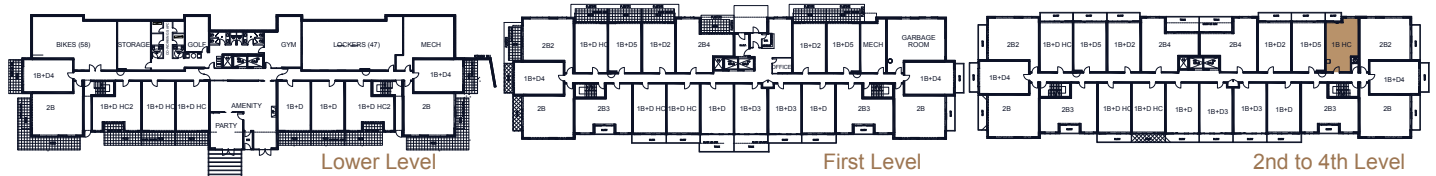
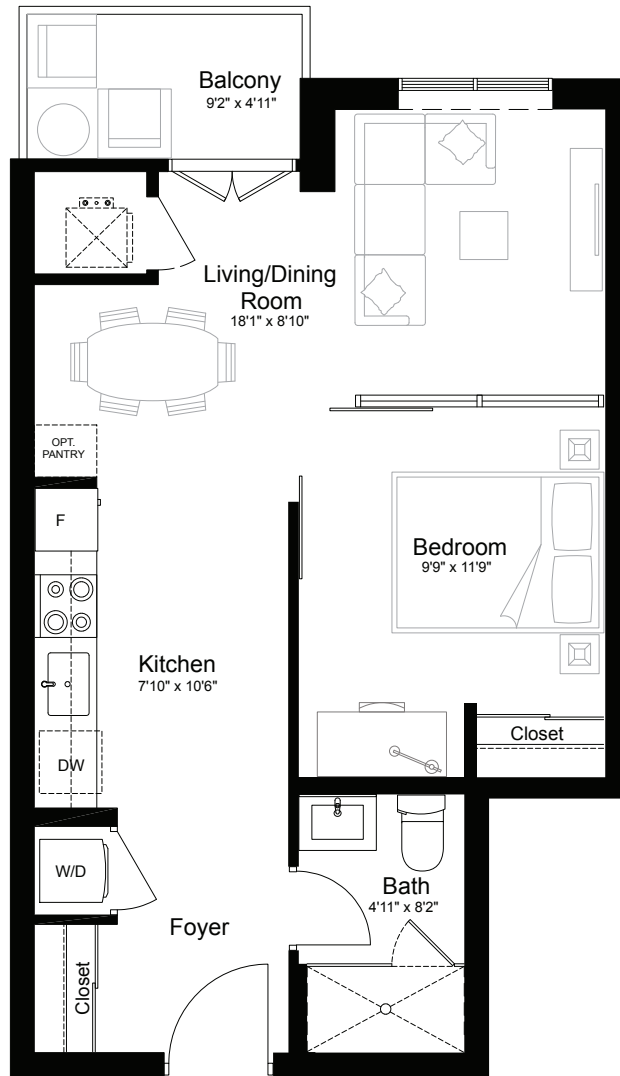
## BALSAM FIR

1 Bed 1 Bath

Suite 550 SF

Outdoor 46 SF

North View



EVERTRUST

DEVELOPMENT GROUP CANADA INC.

The floor plans shown are for illustrative purposes only and are intended to convey the concept and vision for the unit. Details, dimensions, sizes, specifications, layouts and materials are approximate and are subject to change without notice. The size, location and/or configuration of all content depicted within may be changed, varied or mirrored. Furniture, kitchen islands and dashed walls are representational only and do not form any part of any contract document. Actual usable floor space and balcony sizes may vary from that stated per plan. Pricing and availability are subject to change without notice. Please refer solely to the floor plan that is in your agreement. E.&O.E.s



UPPER VISTA

LUXURY HOMES ON THE MUSKOKA RIVER

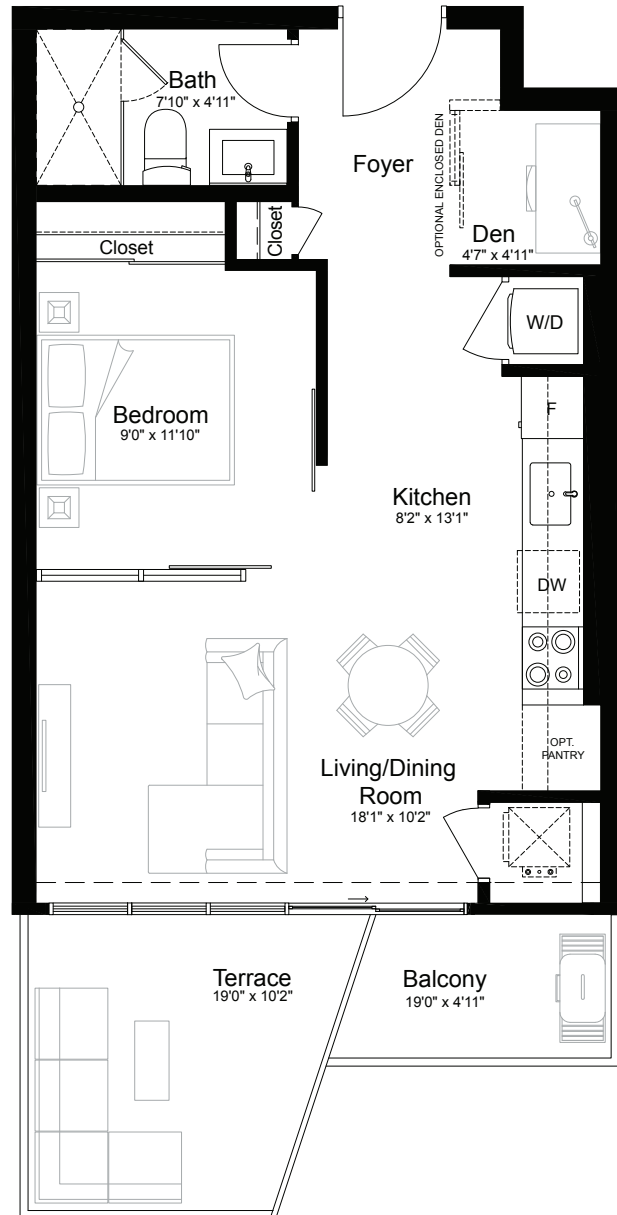
## BEECH

1 Bed 1 Bath 1 Den

Suite 560 SF

Outdoor 194 SF Terrace or 96 SF Balcony

South View



EVERTRUST

DEVELOPMENT GROUP CANADA INC.

The floor plans shown are for illustrative purposes only and are intended to convey the concept and vision for the unit. Details, dimensions, sizes, specifications, layouts and materials are approximate and are subject to change without notice. The size, location and/or configuration of all content depicted within may be changed, varied or mirrored. Furniture, kitchen islands and dashed walls are representational only and do not form any part of any contract document. Actual usable floor space and balcony sizes may vary from that stated per plan. Pricing and availability are subject to change without notice. Please refer solely to the floor plan that is in your agreement. E.&O.E.s



# UPPER VISTA

LUXURY HOMES ON THE MUSKOKA RIVER

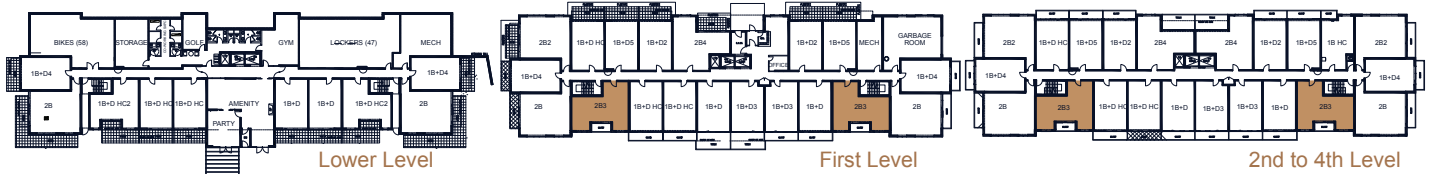
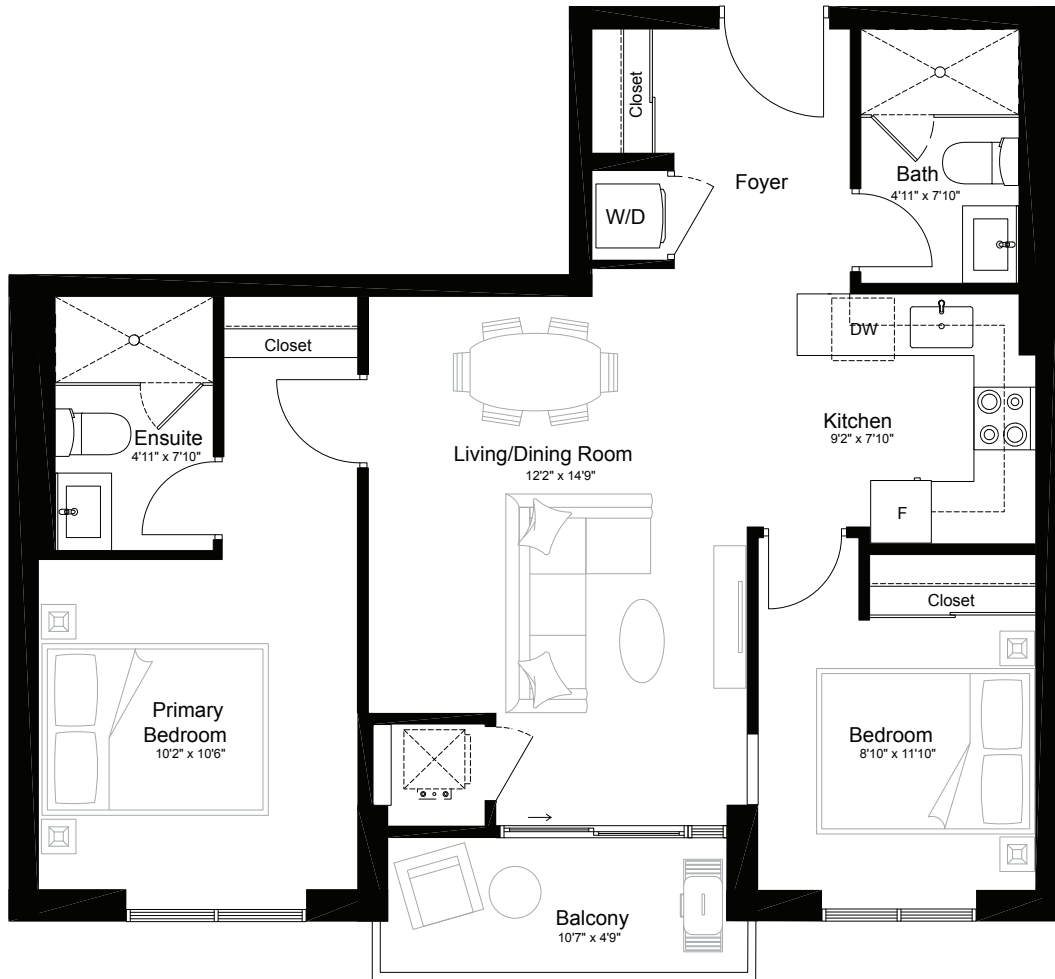
## RED MAPLE

2 Bed 2 Bath

Suite 776 SF

Outdoor 57 SF

South View



### EVERTRUST

DEVELOPMENT GROUP CANADA INC.

The floor plans shown are for illustrative purposes only and are intended to convey the concept and vision for the unit. Details, dimensions, sizes, specifications, layouts and materials are approximate and are subject to change without notice. The size, location and/or configuration of all content depicted within may be changed, varied or mirrored. Furniture, kitchen islands and dashed walls are representational only and do not form any part of any contract document. Actual usable floor space and balcony sizes may vary from that stated per plan. Pricing and availability are subject to change without notice. Please refer solely to the floor plan that is in your agreement. E.&O.E.s





UPPER VISTA

LUXURY HOMES ON THE MUSKOKA RIVER

## RED OAK

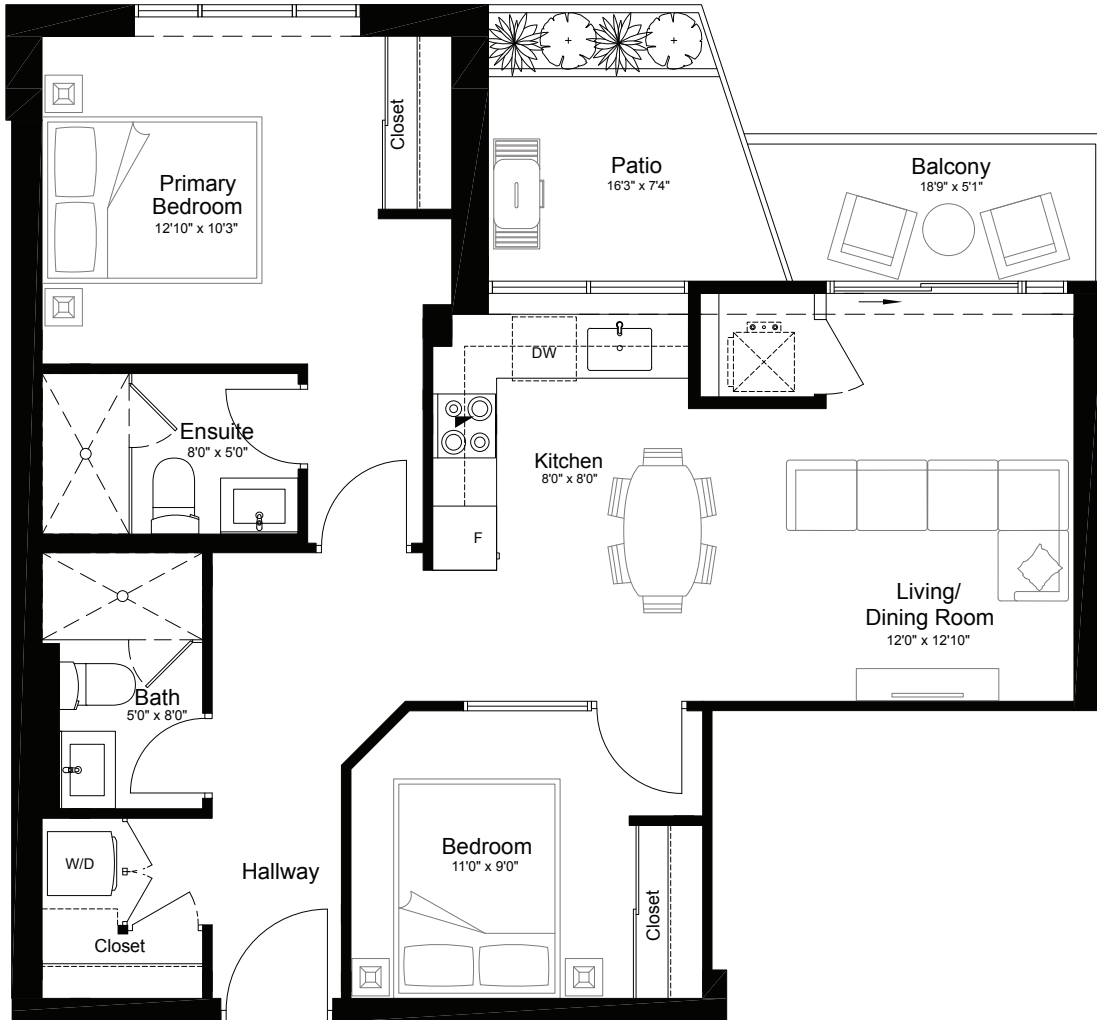
2 Bed 2 Bath

Suite

781 sf

Outdoor 120 SF Patio or 95/196 SF Balcony

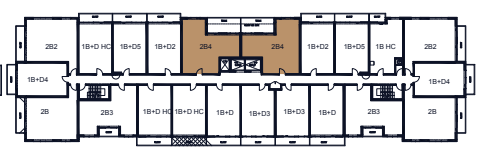
North View



Lower Level



First Level



2nd to 4th Level

EVERTRUST

DEVELOPMENT GROUP CANADA INC.

The floor plans shown are for illustrative purposes only and are intended to convey the concept and vision for the unit. Details, dimensions, sizes, specifications, layouts and materials are approximate and are subject to change without notice. The size, location and/or configuration of all content depicted within may be changed, varied or mirrored. Furniture, kitchen islands and dashed walls are representational only and do not form any part of any contract document. Actual usable floor space and balcony sizes may vary from that stated per plan. Pricing and availability are subject to change without notice. Please refer solely to the floor plan that is in your agreement. E.&O.E.s



# UPPER VISTA

LUXURY HOMES ON THE MUSKOKA RIVER

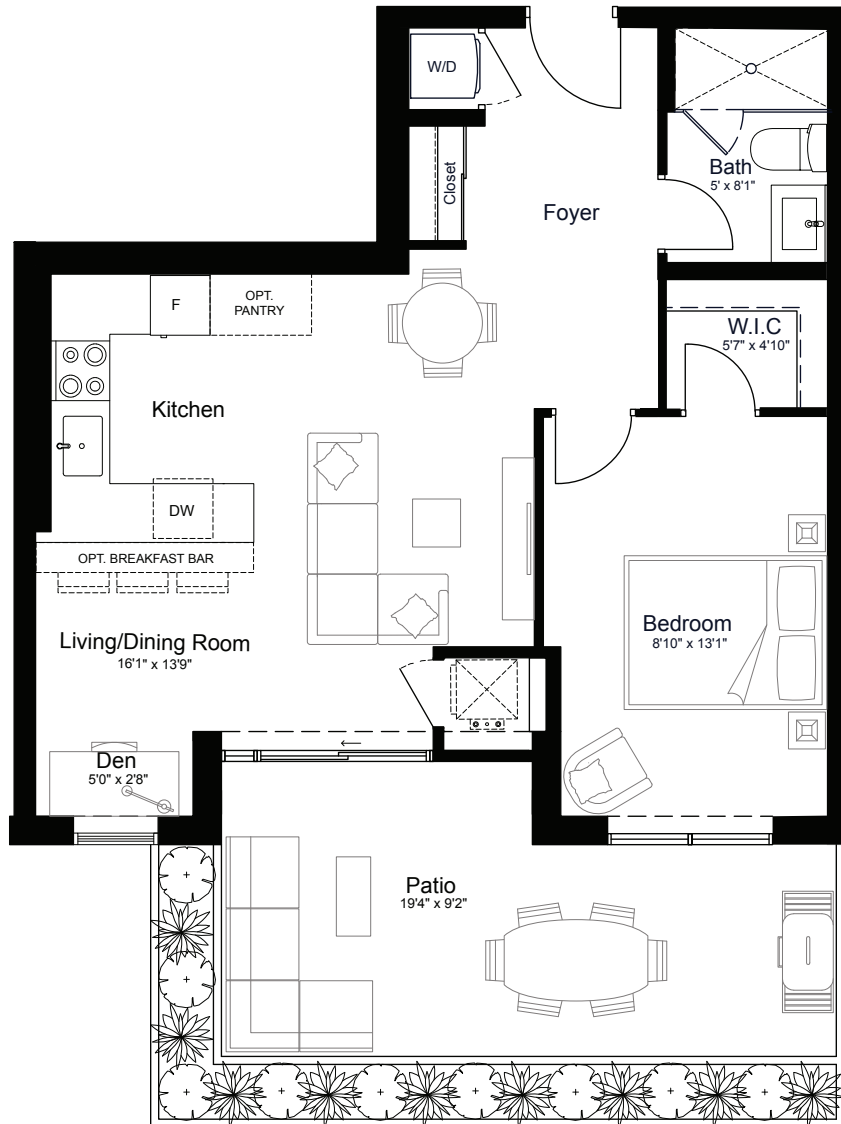
## RED PINE

1 Bed 1 Bath 1 Den

Suite 687 SF

Outdoor 191 SF

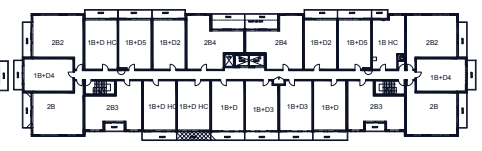
South View



Lower Level



First Level



2nd to 4th Level

# EVERTRUST

DEVELOPMENT GROUP CANADA INC.

The floor plans shown are for illustrative purposes only and are intended to convey the concept and vision for the unit. Details, dimensions, sizes, specifications, layouts and materials are approximate and are subject to change without notice. The size, location and/or configuration of all content depicted within may be changed, varied or mirrored. Furniture, kitchen islands and dashed walls are representational only and do not form any part of any contract document. Actual usable floor space and balcony sizes may vary from that stated per plan. Pricing and availability are subject to change without notice. Please refer solely to the floor plan that is in your agreement. E.&O.E.s





# UPPER VISTA

LUXURY HOMES ON THE MUSKOKA RIVER

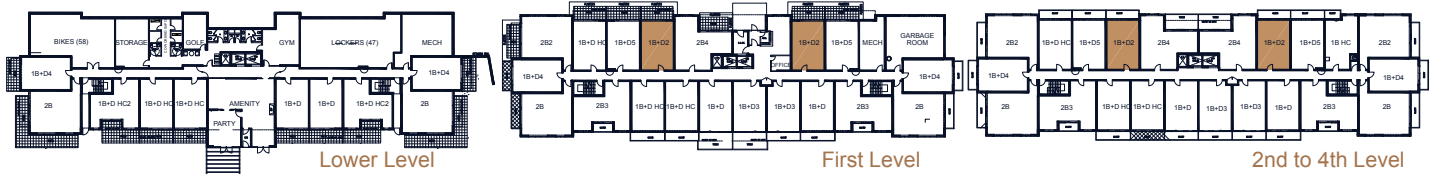
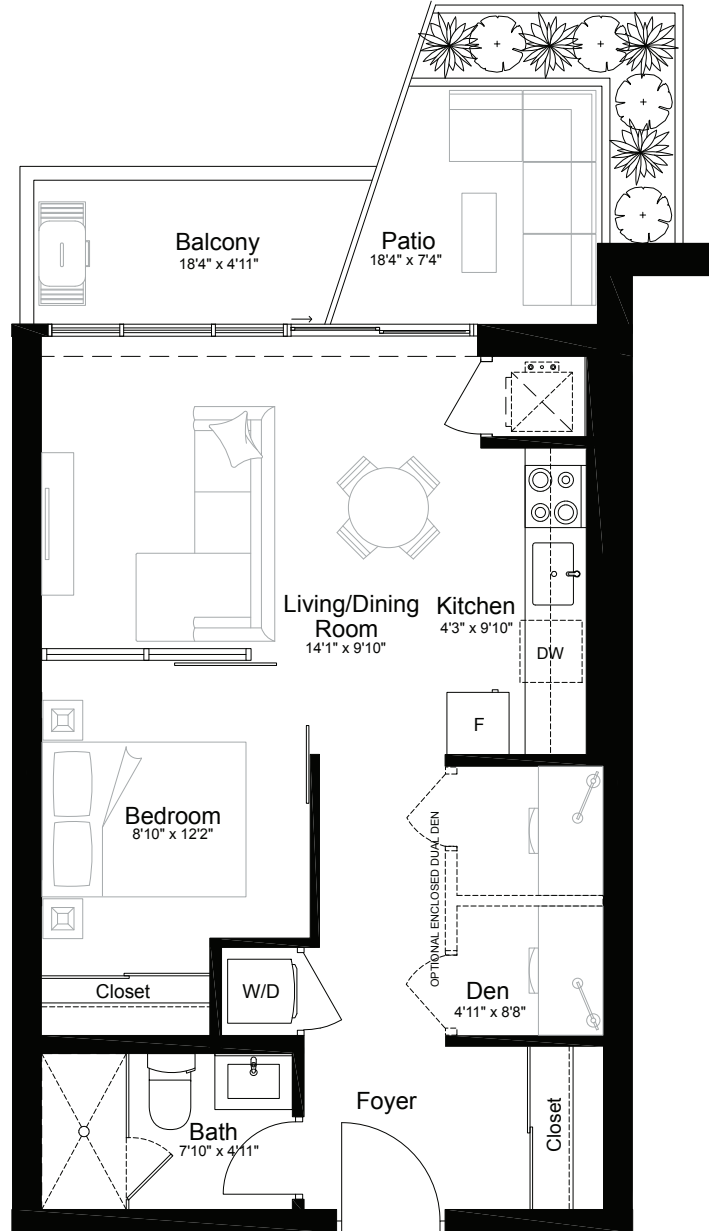
## TAMARAK

1 Bed 1 Bath 1 Den

Suite 567 SF

Outdoor 139 SF Patio or 95 SF Balcony

North View



# EVERTRUST

DEVELOPMENT GROUP CANADA INC.

The floor plans shown are for illustrative purposes only and are intended to convey the concept and vision for the unit. Details, dimensions, sizes, specifications, layouts and materials are approximate and are subject to change without notice. The size, location and/or configuration of all content depicted within may be changed, varied or mirrored. Furniture, kitchen islands and dashed walls are representational only and do not form any part of any contract document. Actual usable floor space and balcony sizes may vary from that stated per plan. Pricing and availability are subject to change without notice. Please refer solely to the floor plan that is in your agreement. E.&O.E.s



# UPPER VISTA

LUXURY HOMES ON THE MUSKOKA RIVER

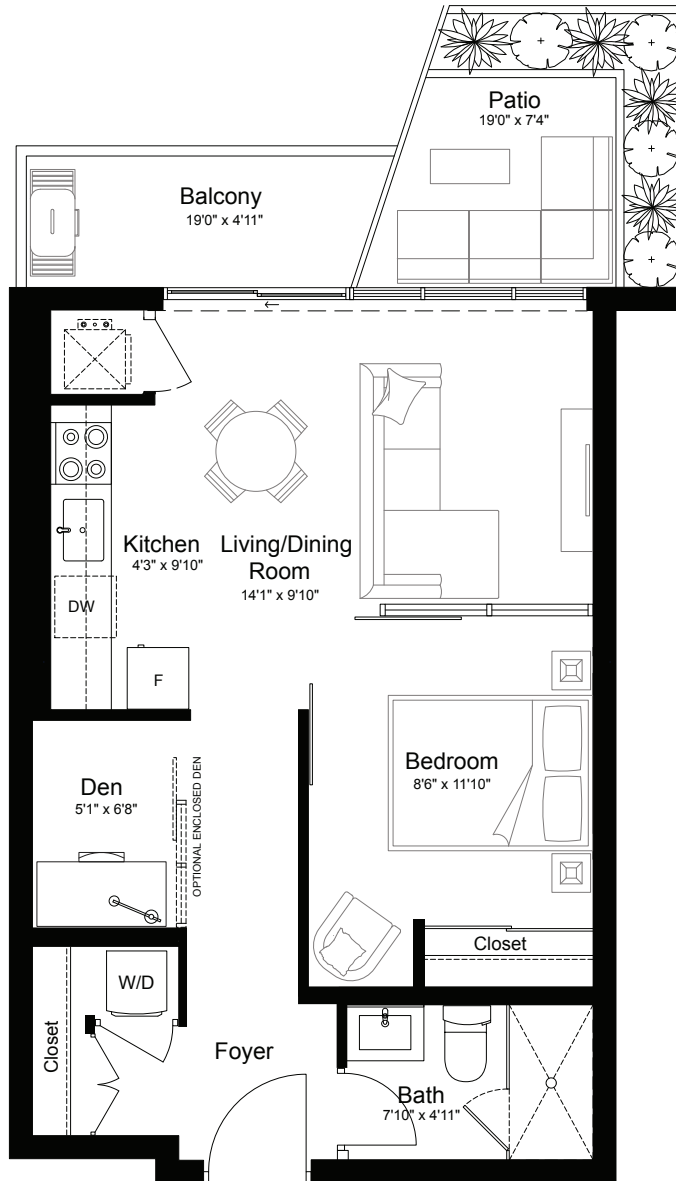
## WHITE BIRCH

1 Bed 1 Bath 1 Den

Suite 564 SF

Outdoor 143 SF Patio or 96 SF Balcony

North View



# EVERTRUST

DEVELOPMENT GROUP CANADA INC.

The floor plans shown are for illustrative purposes only and are intended to convey the concept and vision for the unit. Details, dimensions, sizes, specifications, layouts and materials are approximate and are subject to change without notice. The size, location and/or configuration of all content depicted within may be changed, varied or mirrored. Furniture, kitchen islands and dashed walls are representational only and do not form any part of any contract document. Actual usable floor space and balcony sizes may vary from that stated per plan. Pricing and availability are subject to change without notice. Please refer solely to the floor plan that is in your agreement. E.&O.E.s



# UPPER VISTA

LUXURY HOMES ON THE MUSKOKA RIVER

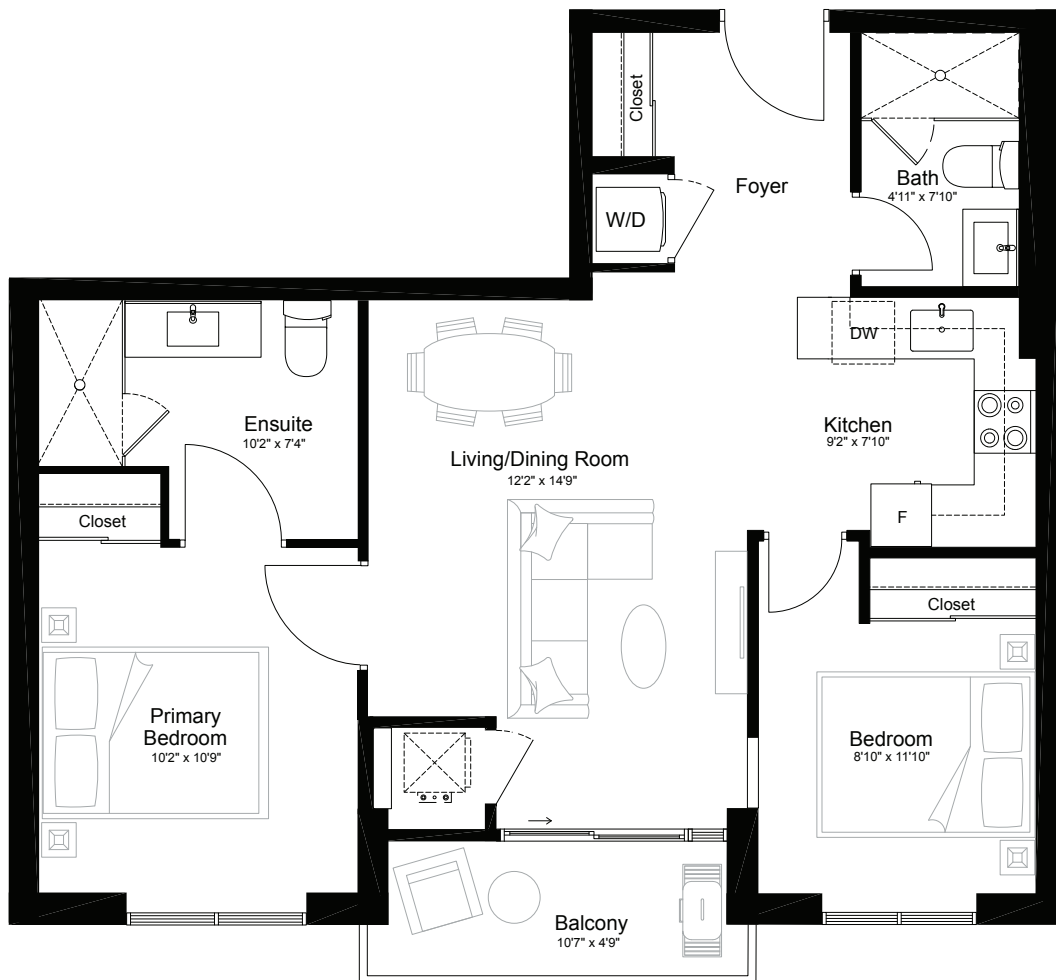
## WHITE PINE

2 Bed 2 Bath

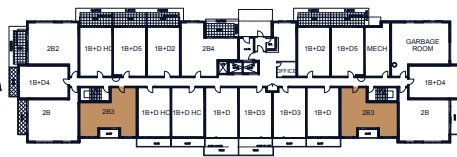
Suite 776 SF

Outdoor 57 SF

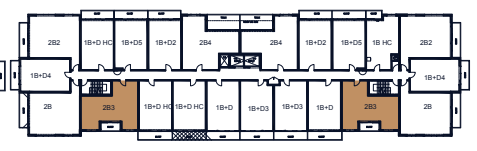
South View



Lower Level



First Level



2nd to 4th Level

# EVERTRUST

DEVELOPMENT GROUP CANADA INC.

The floor plans shown are for illustrative purposes only and are intended to convey the concept and vision for the unit. Details, dimensions, sizes, specifications, layouts and materials are approximate and are subject to change without notice. The size, location and/or configuration of all content depicted within may be changed, varied or mirrored. Furniture, kitchen islands and dashed walls are representational only and do not form any part of any contract document. Actual usable floor space and balcony sizes may vary from that stated per plan. Pricing and availability are subject to change without notice. Please refer solely to the floor plan that is in your agreement. E.&O.E.s



UPPER VISTA

LUXURY HOMES ON THE MUSKOKA RIVER

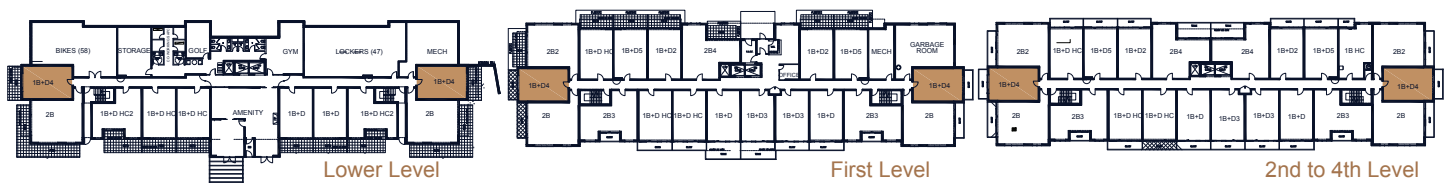
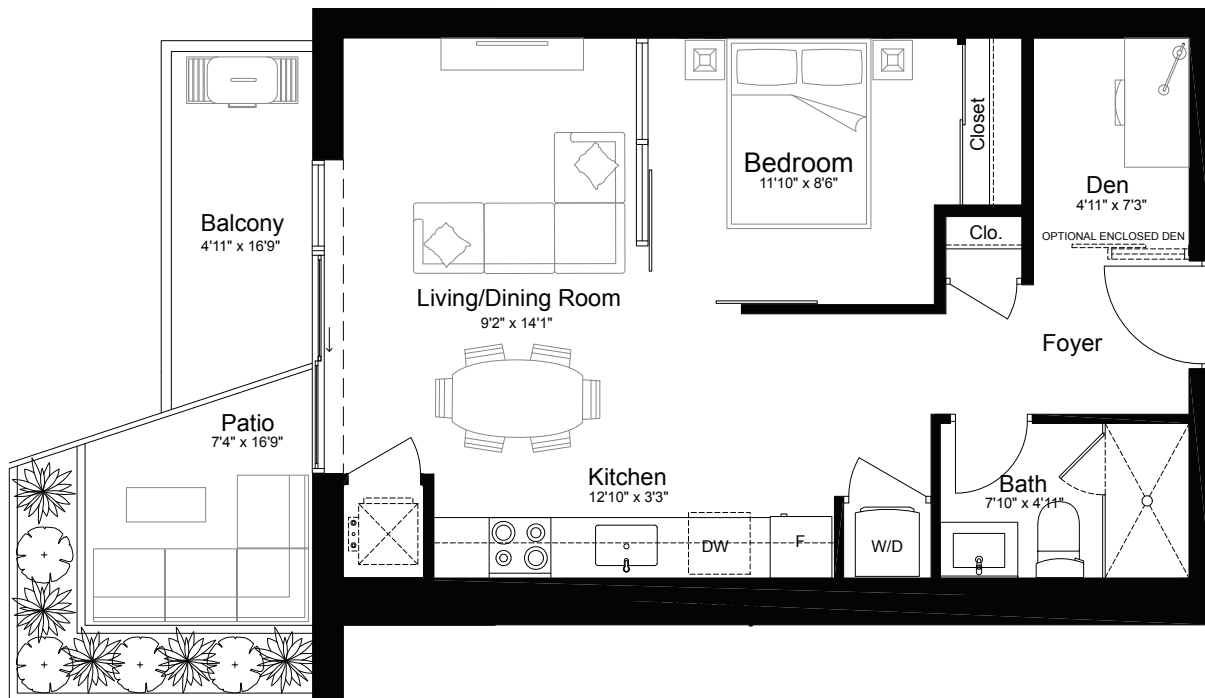
## WHITE SPRUCE

1 Bed 1 Bath 1 Den

Suite 555 SF

Outdoor 140 SF Patio **OR** 82 SF Balcony

East View **OR** West View



EVERTRUST

DEVELOPMENT GROUP CANADA INC.

The floor plans shown are for illustrative purposes only and are intended to convey the concept and vision for the unit. Details, dimensions, sizes, specifications, layouts and materials are approximate and are subject to change without notice. The size, location and/or configuration of all content depicted within may be changed, varied or mirrored. Furniture, kitchen islands and dashed walls are representational only and do not form any part of any contract document. Actual usable floor space and balcony sizes may vary from that stated per plan. Pricing and availability are subject to change without notice. Please refer solely to the floor plan that is in your agreement. E.&O.E.s



UPPER VISTA

LUXURY HOMES ON THE MUSKOKA RIVER

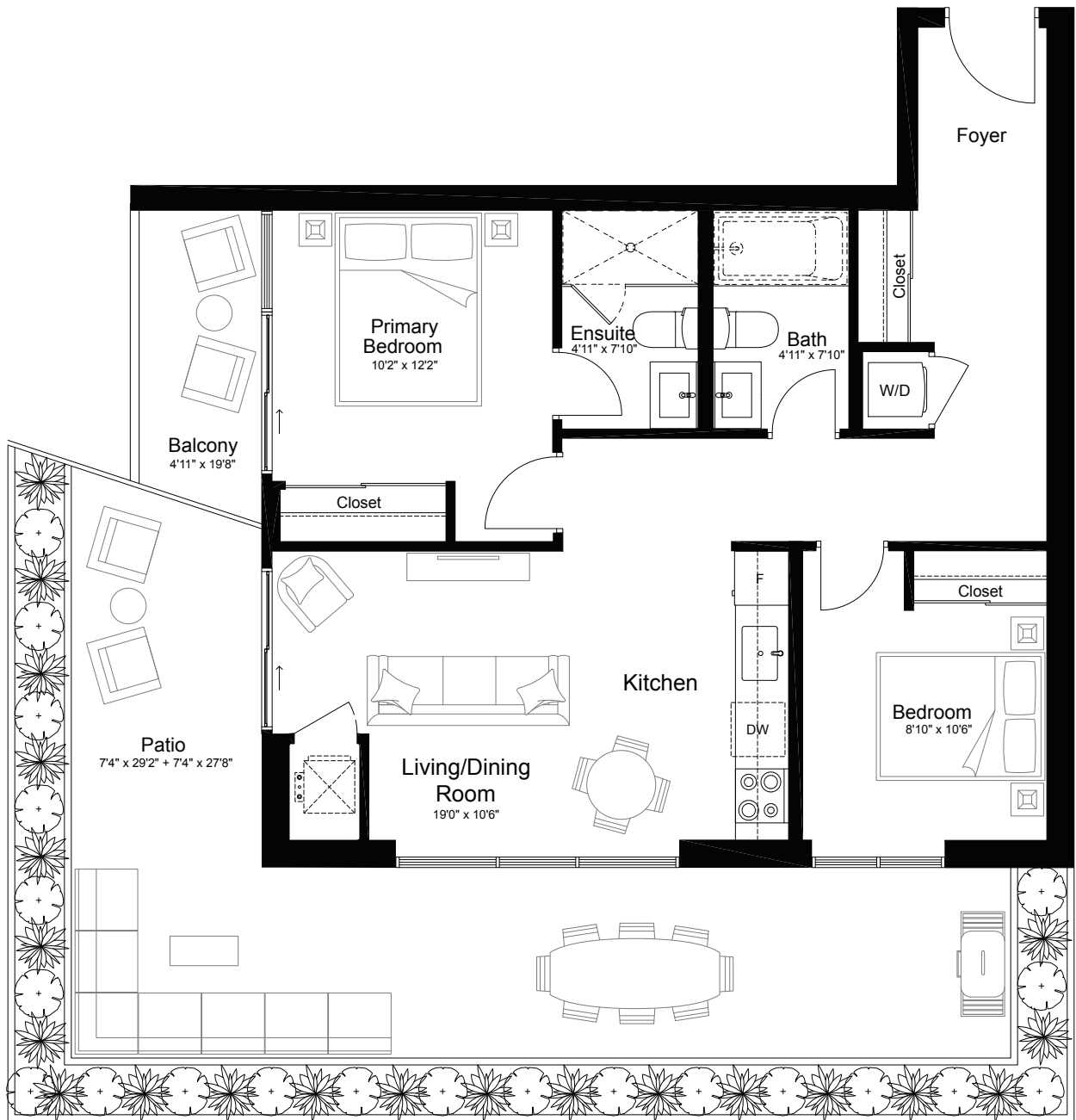
## WILLOW

2 Bed 2 Bath

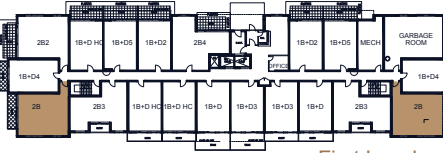
Suite 785 SF

Outdoor 423 SF Patio OR 100 SF Balcony

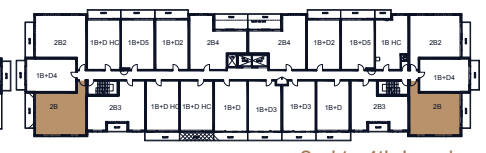
South View & West View OR South View & East View



Lower Level



First Level



2nd to 4th Level

EVERTRUST

DEVELOPMENT GROUP CANADA INC.

The floor plans shown are for illustrative purposes only and are intended to convey the concept and vision for the unit. Details, dimensions, sizes, specifications, layouts and materials are approximate and are subject to change without notice. The size, location and/or configuration of all content depicted within may be changed, varied or mirrored. Furniture, kitchen islands and dashed walls are representational only and do not form any part of any contract document. Actual usable floor space and balcony sizes may vary from that stated per plan. Pricing and availability are subject to change without notice. Please refer solely to the floor plan that is in your agreement. E.&O.E.s