



ELGINEAST

AT BAYVIEW

NEFXM

X

ELGIN E A

X symbolizes an intersection where two roads meet and define a destination.

In the word NEXT, it not only marks a spot, but the word rallies the momentum to what is coming. This is the new NEXT – ELGINEAST, an address, a community and destination.

S T

URBAN CONDOS

Welcome to a sophisticated, contemporary address. Elgin East's two midrise buildings are linked by an elegant, cosmopolitan one-storey lobby and amenity space with upper level outdoor terrace, accessed via a porte cochere drive and drop-off area.

A modern, stepped design highlights the buildings' facade, a symphonic composition of natural brick, precast panels and luminescent glass. Generous balconies and terraces lend definition to the frontage while offering a seamless transition between indoors and outdoors.



ELGIN

Extraordinary landmark living starts with a storied arrival. A winding porte cochere driveway brings you to the sleek Lobby Lounge, styled in rich walnut, metallic accents and polished graphite, providing an upscale welcome.

LUXURY IS IN THE EXQUISITE DETAILS

LOBBY



PIANO LOUNGE



SWIAT THE DETAILS FOR AN ELEVATED WAY OF LIFE

STATE-OF-THE-ART FITNESS CENTRE

The sophisticated ambience is carried over into the state-of-the-art Fitness Centre and adjoining Yoga Studio, where you can exercise on the latest equipment or centre mind and body in a serene environment.





OUTDOOR URBAN TERRACE

AMENITY PLAN

- | | | |
|-------------------|----------------------|-------------------|
| 1. DINING AREA | 4. CONFERENCE ROOM | 7. LOUNGE |
| 2. PIANO LOUNGE | 5. THEATRE | 8. FITNESS CENTRE |
| 3. BILLIARDS ROOM | 6. LOBBY / CONCIERGE | 9. YOGA STUDIO |



LIVE YOUR
BEST LIFE



LIVE
A LITTLE MORE
LUXURIOUSLY

PENTHOUSE

Discover spacious suites featuring generous terraces with unobstructed views. The 9th floor penthouse suites' modern kitchens are open to the living room and perfect for entertaining friends and family.



CONTEMPORARY
CHIC



SOPHISTICATED LIVING

MASTER
BEDROOM



DESIGN

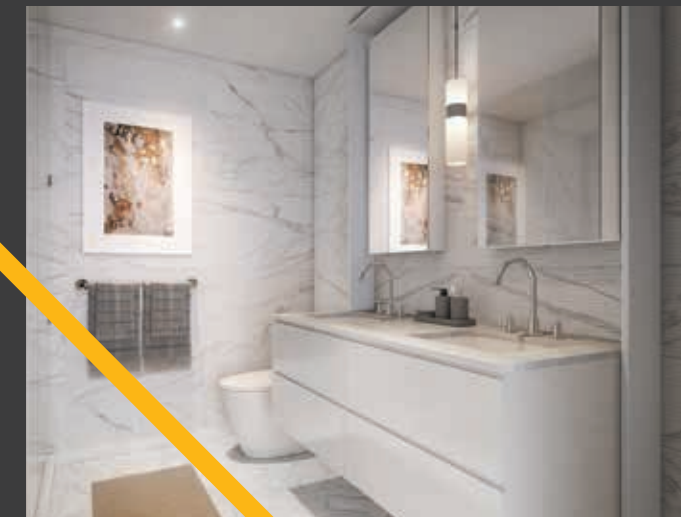
Modern, elegant, chic. Interiors at Elgin East are curated to provide contemporary luxury. The kitchen is a statement in European-inspired design with stone countertops, custom island, fine-crafted cabinetry and seamless integrated appliances. Living areas are bright and spacious, with expansive windows, engineered wood flooring, ample closet storage and more. Every inch of space is meticulously designed and crafted to provide a premium living experience.

The ensuite features sleek wall and floor tiles, stylish custom vanity and designer fixtures.

DESIGNER
KITCHEN



SLEEK
ENSUITE



SITE PLAN

1. MAIN ENTRANCE TO BUILDING A & B
2. UNDERGROUND PARKING GARAGE ENTRANCE
3. PEDESTRIAN ACCESS TO PARKING GARAGE
4. ELEVATOR ACCESS TO PARKING GARAGE
5. AMENITY TERRACE
6. PARKETTE
7. PEDESTRIAN ACCESS TO ELGIN MILLS
8. STREET ACCESS TO BAYVIEW AVE
9. STREET ACCESS TO LESLIE ST & 19TH AVE
10. STREET ACCESS TO ELGIN MILLS



BOUTIQUE TOWNS



MODERN

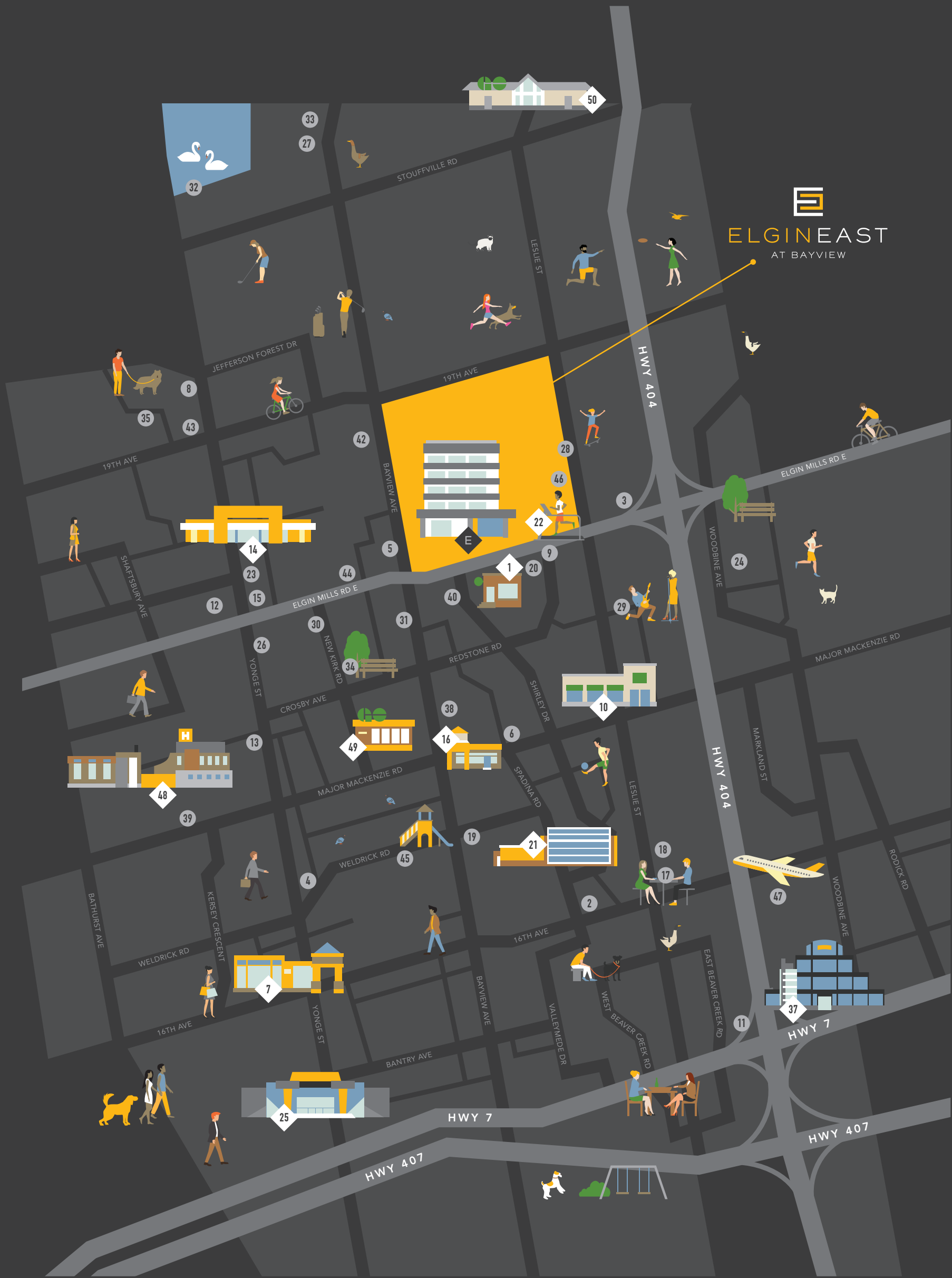
The exteriors are also contemporary and bold, featuring brick, panelized cladding and large windows. Balconies with glass railings offer outdoor living space for the warmer months. Select homes come with gorgeous rooftop terraces.



URBAN ATTITUDE



ROOFTOP BBQ



CONNECTED LIVING

With a picturesque setting in Richmond Hill and all the conveniences of an urban lifestyle, Elgin East is the perfect community for your family to live, play, shop, learn, connect and grow. A wealth of fine shopping and dining options are available along the Bayview and Yonge corridor. Richmond Hill GO station is just moments away and Highway 404 is also nearby. Get up close and personal with nature at nearby parks such as Headwaters Community Park, Leno Park, Newberry Park and Crosby Park.

- | | |
|--|---|
| <ol style="list-style-type: none"> 1. Starbucks 2. Bayview Hill Centre 3. Costco Wholesale 4. T & T Supermarket 5. Shoppers Drug Mart 6. Walmart Richmond Hill Superstore 7. Hillcrest Mall 8. Sobeys 9. Nonna's Oven 10. LCBO 11. The Keg Steakhouse and Bar 12. Longo's Richmond Hill 13. Richmond Hill Centre 14. Loblaws 15. Mine Japanese Restaurant 16. Ten Ren's Tea Time 17. Dicken's Café 18. Green Lemon Grass 19. Yang's Fine Chinese Cuisine 20. Kaze Japanese Cuisine 21. Bayview Hill Community Centre 22. Richmond Green & Sports Centre 23. Rainbow Cinemas Elgin Mills 24. Chit-Chat-Play Board Game Café 25. Silvercity | <ol style="list-style-type: none"> 26. Richmond Hill Pro Bowl 27. Oak Ridge Community Centre 28. Richmond Green Library 29. Cosmo Music 30. Fitness Connection 31. YMCA Richmond Hill 32. Bond Lake 33. Lake Wilcox Park 34. Crosby Park 35. Saigeon Trail 36. Angus Glen Golf Club 37. Seneca College: Markham Campus 38. Bayview Secondary School 39. Alexander Mackenzie High School 40. Michaelle Jean Public School 41. Beverley Acres Public School 42. Holy Trinity School 43. Richland Academy 44. TMS School Elgin Mills Campus 45. Richmond Hill Montessori & Elementary School 46. Richmond Green Secondary School 47. Toronto Buttonville Municipal Airport 48. Mackenzie Health 49. Richmond Hill GO Station 50. Gormley GO Station |
|--|---|

FROM GOLF COURSES
AND NATURE TRAILS TO
SPORTS FIELDS,
LIBRARIES AND
COMMUNITY CENTRES, YOUR
FAMILY HAS EVERYTHING
THEY NEED TO LIVE LIFE TO THE
FULLEST

GREEN SPACE

Take it all in. There's a sense of freedom in blue skies, fresh air, and the all the beauty nature provides.

O



Richmond Green Sports Centre and Park is a 26,000 sq. ft. recreation facility for the area, with soccer, baseball, ice rinks, lawn bowling, picnic areas and more.

P

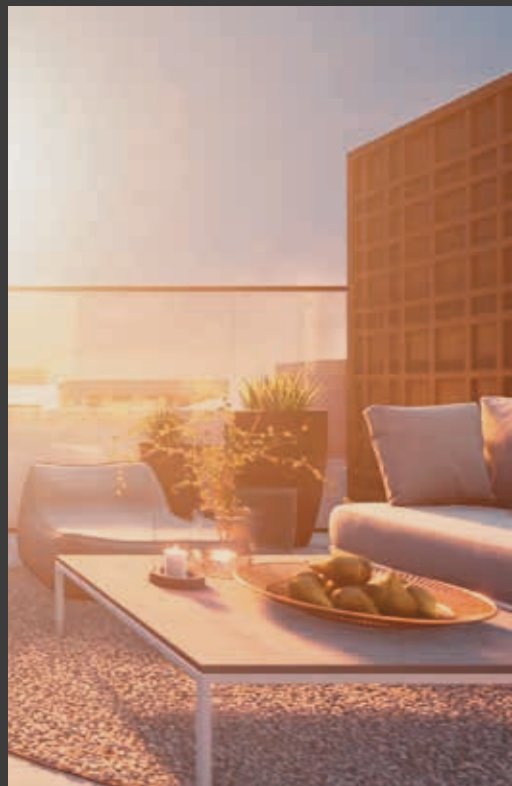


Schools in the area include Holy Trinity School, Beverley Acres Public School, Crosby Heights Public School and Jean Vanier Catholic High School.

E

N





There are few things in nature as awe-inspiring as the Sequoia tree. Beautiful, majestic, timeless, a symbol of everlasting endurance. It is also the inspiration behind Sequoia Grove Homes, a boutique land development and home building company whose principals have been building signature urban communities across the GTA for well over 25 years. With every successful project, Sequoia has

grown in scale and breadth, but has not lost touch with its cherished values of quality, responsibility and customer service. With Elgin East - an innovative community with a new style of homes - Sequoia once again embraces positive change and the future of homebuilding. But some things will always remain constant - namely, Sequoia's signature attention to quality and its unwavering commitment to customer satisfaction.

BEAUTIFUL.
MAJESTIC.
TIMELESS.

BUILDERS STORY