

## ELGIN EAST



**PRICE – 599,900** 1BR /1 BATH – MODEL – ISLA ( 573 SQ.FT + 121 TERRACE . TOTAL: 694 SQ.FT ) 8 FLOOR , WEST UNOBSTRUCTED VIEW

**PARKING AND LOCKER INCLUDED IN THE PRICE**

**LOW MAINTENANCE FEE: 375 \$ ( INCLUDED PARKING AND LOCKER) 34\$ FOR UNLIMITED HIGH SPEED INTERNET**

**PURCHASE PRICE – 445,900**

**DEPOSIT PAID (15%) – 66,885**

**FUTURE DEPOSIT ON OCCUPANCY: 22,295 – END OF 2022/ MID 2023**

**OCCUPANCY – END OF 2022/MID 2023 , CLOSING MID/END 2023**

**TO PURCHASE THIS UNIT NOW YOU NEED TO PAY:**

- 1) DEPOSIT PAID TO THE DEVELOPER – 66,885**
- 2) PROFIT – 154,090**

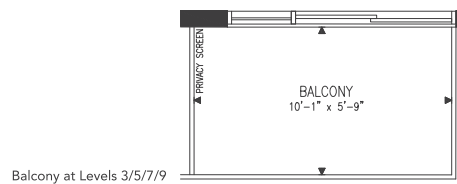
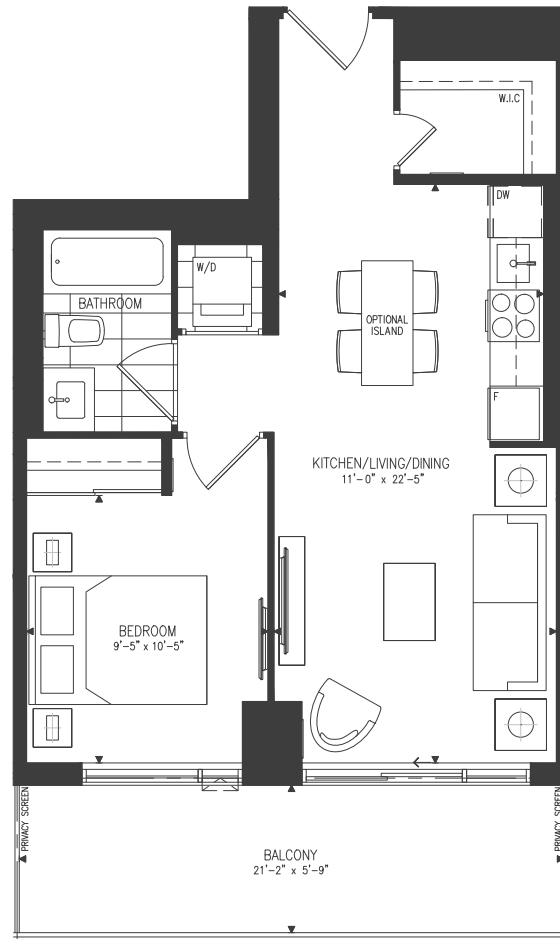
**TOTAL FOR THE ASSIGNMENT: 200,975**

# ISLA

1 BEDROOM

**573 SF**  
121 SF OUTDOOR SPACE  
LEVELS 2/4/6/8/10

**573 SF**  
58 SF OUTDOOR SPACE  
LEVELS 3/5/7/9



Materials, specifications and floorplans are subject to change without notice. All renderings are artist's conception. All floorplans have approximate dimensions. Actual usable floor space may vary from the stated floor area. E. & O.E. Balcony depths vary depending on floor level locations.



ELGINEAST

AT BAYVIEW

NEXT

X

X symbolizes an intersection  
where two roads meet and  
define a destination.

In the word NEXT, it not only  
marks a spot, but the word  
rallies the momentum to what  
is coming. This is the new  
NEXT – ELGINEAST, an address,  
a community and destination.

ELGIN

E

A

S

T



## URBAN CONDOS

Welcome to a sophisticated, contemporary address. Elgin East's two midrise buildings are linked by an elegant, cosmopolitan one-storey lobby and amenity space with upper level outdoor terrace, accessed via a porte cochere drive and drop-off area.

A modern, stepped design highlights the buildings' facade, a symphonic composition of natural brick, precast panels and luminescent glass. Generous balconies and terraces lend definition to the frontage while offering a seamless transition between indoors and outdoors.





Extraordinary landmark living starts with a storied arrival. A winding porte cochere driveway brings you to the sleek Lobby Lounge, styled in rich walnut, metallic accents and polished graphite, providing an upscale welcome.

# LUXURY IS IN THE EXQUISITE DETAILS

LOBBY





# PIANO LOUNGE





# SWEAT AT THE DETAILS FOR AN ELEVATED WAY OF LIFE

## STATE-OF-THE-ART FITNESS CENTRE

The sophisticated ambience is carried over into the state-of-the-art Fitness Centre and adjoining Yoga Studio, where you can exercise on the latest equipment or centre mind and body in a serene environment.







# OUTDOOR URBAN TERRACE



AMENITY PLAN

- |                   |                      |                   |
|-------------------|----------------------|-------------------|
| 1. DINING AREA    | 4. CONFERENCE ROOM   | 7. LOUNGE         |
| 2. PIANO LOUNGE   | 5. THEATRE           | 8. FITNESS CENTRE |
| 3. BILLIARDS ROOM | 6. LOBBY / CONCIERGE | 9. YOGA STUDIO    |



LIVE YOUR  
BEST LIFE





LIVE  
A LITTLE MORE  
LUXURIOUSLY

## PENTHOUSE

Discover spacious suites featuring generous terraces with unobstructed views. The 9th floor penthouse suites' modern kitchens are open to the living room and perfect for entertaining friends and family.





CONTEMPORARY  
CHIC





SOPHISTICATED  
LIVING



MASTER  
BEDROOM



# DESIGN

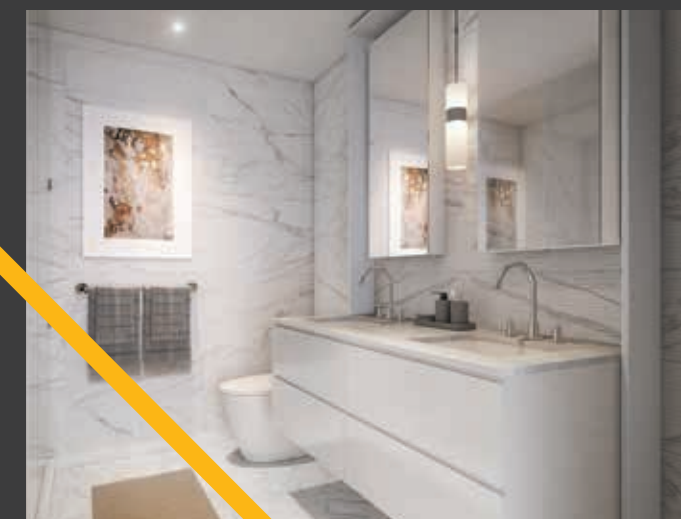
Modern, elegant, chic. Interiors at Elgin East are curated to provide contemporary luxury. The kitchen is a statement in European-inspired design with stone countertops, custom island, fine-crafted cabinetry and seamless integrated appliances. Living areas are bright and spacious, with expansive windows, engineered wood flooring, ample closet storage and more. Every inch of space is meticulously designed and crafted to provide a premium living experience.

The ensuite features sleek wall and floor tiles, stylish custom vanity and designer fixtures.

DESIGNER  
KITCHEN



SLEEK  
ENSUITE





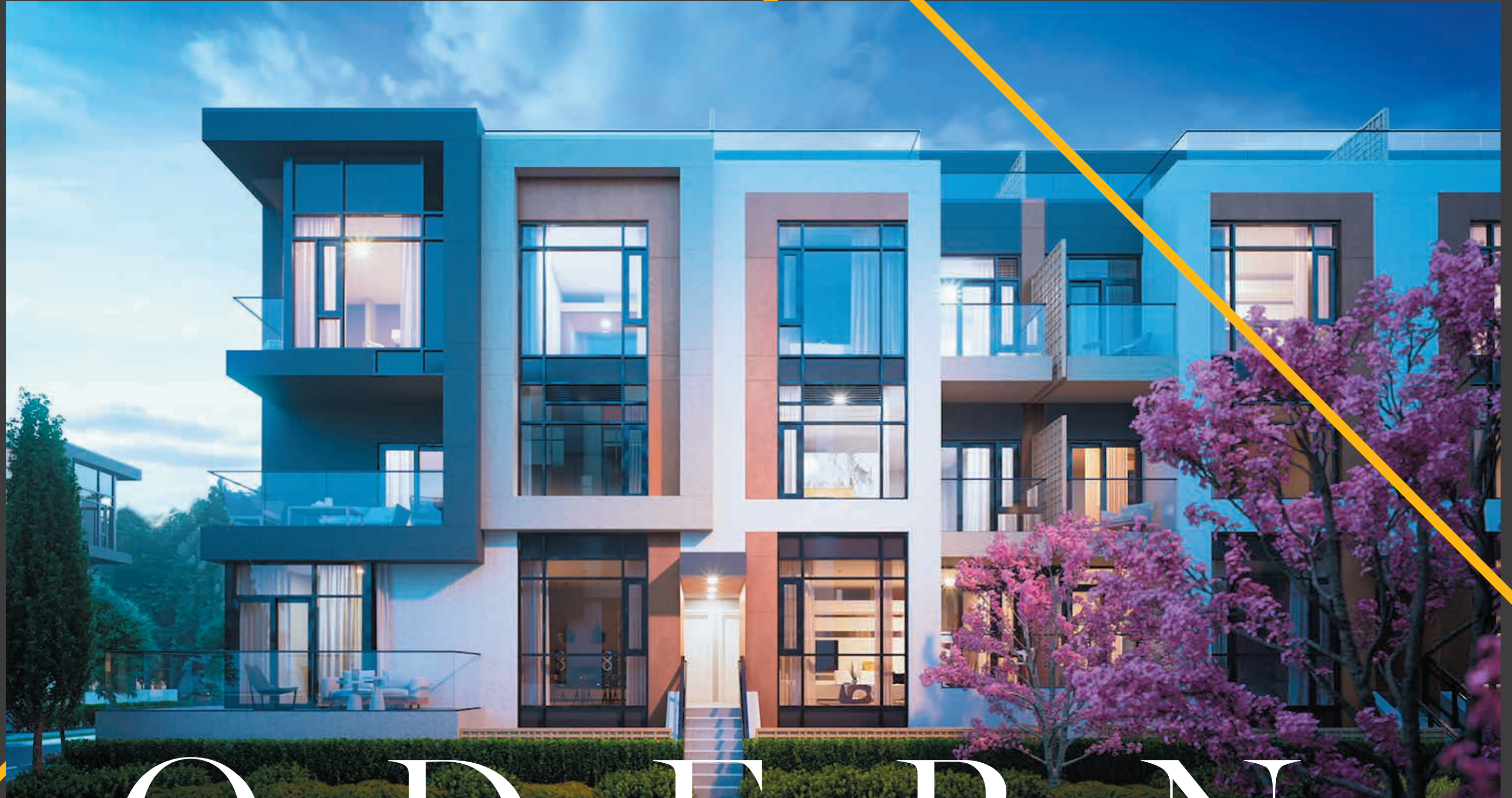
# SITE PLAN

1. MAIN ENTRANCE TO BUILDING A & B
2. UNDERGROUND PARKING GARAGE ENTRANCE
3. PEDESTRIAN ACCESS TO PARKING GARAGE
4. ELEVATOR ACCESS TO PARKING GARAGE
5. AMENITY TERRACE
6. PARKETTE
7. PEDESTRIAN ACCESS TO ELGIN MILLS
8. STREET ACCESS TO BAYVIEW AVE
9. STREET ACCESS TO LESLIE ST & 19TH AVE
10. STREET ACCESS TO ELGIN MILLS





BOUTIQUE TOWNS



# MODERN

The exteriors are also contemporary and bold, featuring brick, panelized cladding and large windows. Balconies with glass railings offer outdoor living space for the warmer months. Select homes come with gorgeous rooftop terraces.





URBAN  
ATTITUDE

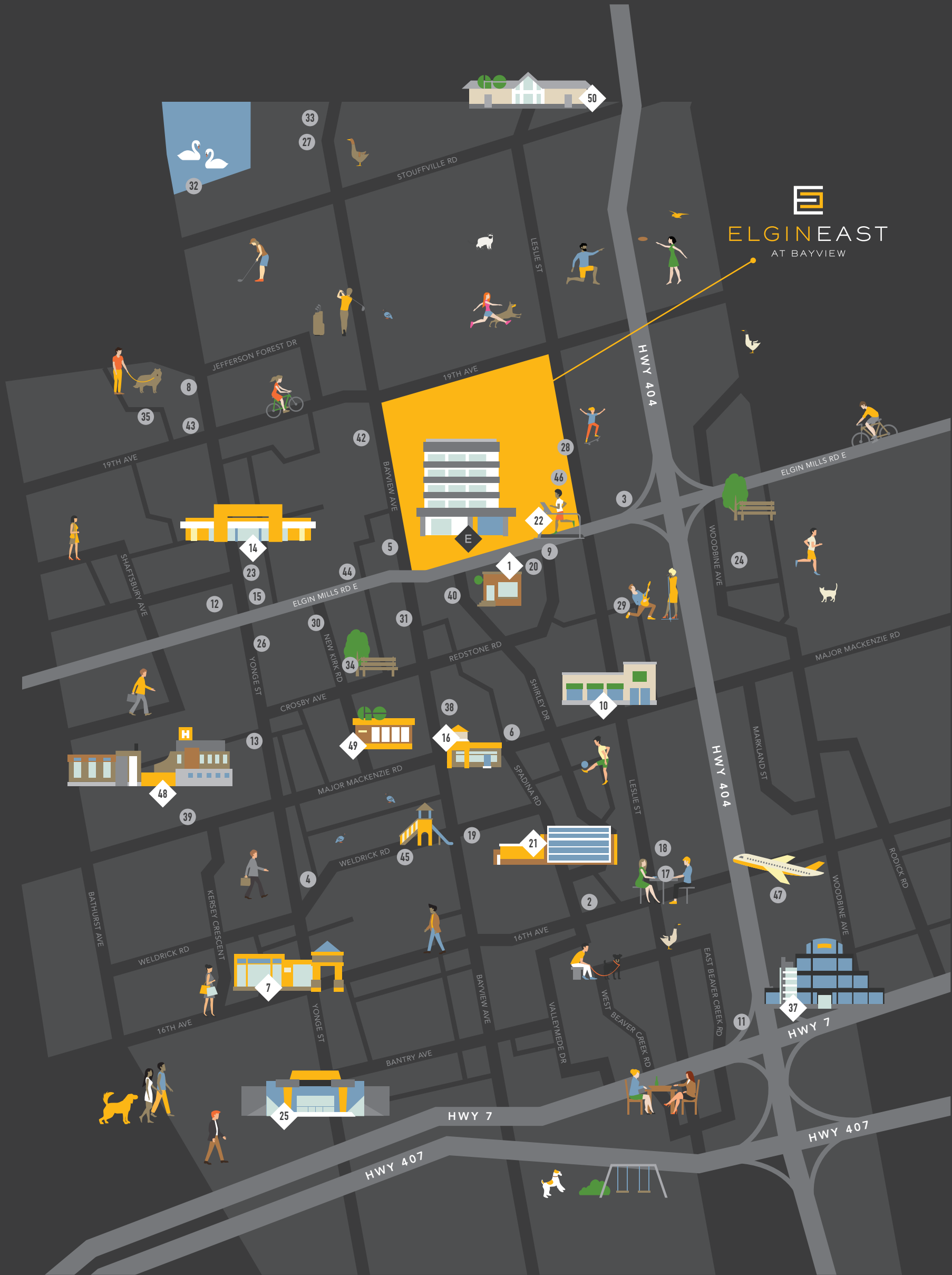




# ROOFTOP BBQ



# CONNECTED LIVING



With a picturesque setting in Richmond Hill and all the conveniences of an urban lifestyle, Elgin East is the perfect community for your family to live, play, shop, learn, connect and grow. A wealth of fine shopping and dining options are available along the Bayview and Yonge corridor. Richmond Hill GO station is just moments away and Highway 404 is also nearby. Get up close and personal with nature at nearby parks such as Headwaters Community Park, Leno Park, Newberry Park and Crosby Park.

1. Starbucks
2. Bayview Hill Centre
3. Costco Wholesale
4. T & T Supermarket
5. Shoppers Drug Mart
6. Walmart Richmond Hill Superstore
7. Hillcrest Mall
8. Sobeys
9. Nonna's Oven
10. LCBO
11. The Keg Steakhouse and Bar
12. Longo's Richmond Hill
13. Richmond Hill Centre
14. Loblaws
15. Mine Japanese Restaurant
16. Ten Ren's Tea Time
17. Dicken's Café
18. Green Lemon Grass
19. Yang's Fine Chinese Cuisine
20. Kaze Japanese Cuisine
21. Bayview Hill Community Centre
22. Richmond Green & Sports Centre
23. Rainbow Cinemas Elgin Mills
24. Chit-Chat-Play Board Game Café
25. Silvercity
26. Richmond Hill Pro Bowl
27. Oak Ridge Community Centre
28. Richmond Green Library
29. Cosmo Music
30. Fitness Connection
31. YMCA Richmond Hill
32. Bond Lake
33. Lake Wilcox Park
34. Crosby Park
35. Saigeon Trail
36. Angus Glen Golf Club
37. Seneca College: Markham Campus
38. Bayview Secondary School
39. Alexander Mackenzie High School
40. Michaelle Jean Public School
41. Beverley Acres Public School
42. Holy Trinity School
43. Richland Academy
44. TMS School Elgin Mills Campus
45. Richmond Hill Montessori & Elementary School
46. Richmond Green Secondary School
47. Toronto Buttonville Municipal Airport
48. Mackenzie Health
49. Richmond Hill GO Station
50. Gormley GO Station



FROM GOLF  
COURSES  
AND NATURE  
TRAILS TO  
SPORTS FIELDS,  
LIBRARIES AND  
COMMUNITY  
CENTRES, YOUR  
FAMILY HAS  
EVERYTHING  
THEY NEED TO  
LIVE LIFE TO THE  
FULLEST

# GREEN SPACE

Take it all in. There's a sense of freedom in blue skies, fresh air,  
and the all the beauty nature provides.

# O



Richmond Green Sports Centre and Park is a 26,000 sq. ft. recreation facility for the area, with soccer, baseball, ice rinks, lawn bowling, picnic areas and more.

# P



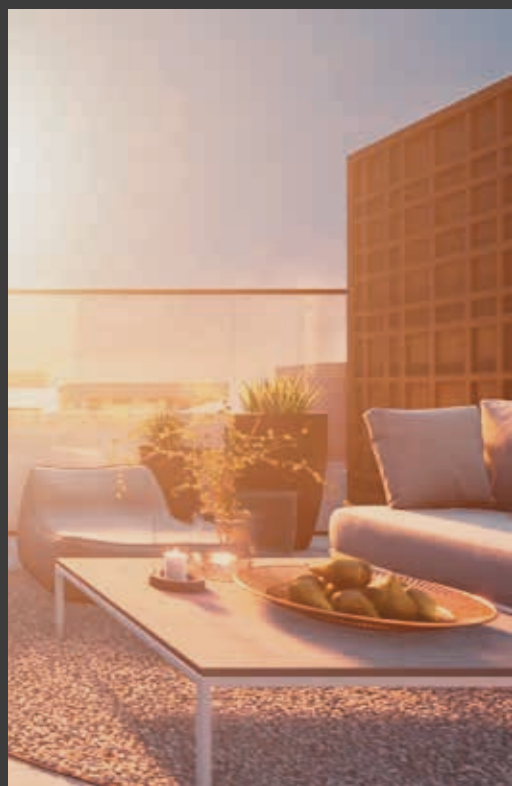
Schools in the area include Holy Trinity School, Beverley Acres Public School, Crosby Heights Public School and Jean Vanier Catholic High School.

# E

# N







There are few things in nature as awe-inspiring as the Sequoia tree. Beautiful, majestic, timeless, a symbol of everlasting endurance. It is also the inspiration behind Sequoia Grove Homes, a boutique land development and home building company whose principals have been building signature urban communities across the GTA for well over 25 years. With every successful project, Sequoia has

grown in scale and breadth, but has not lost touch with its cherished values of quality, responsibility and customer service. With Elgin East - an innovative community with a new style of homes - Sequoia once again embraces positive change and the future of homebuilding. But some things will always remain constant - namely, Sequoia's signature attention to quality and its unwavering commitment to customer satisfaction.

BEAUTIFUL.  
MAJESTIC.  
TIMELESS.

BUILDER  
STORY