



YONGE CITY SQUARE
RESIDENCES

PAST DEVELOPMENTS



The Rosedale on Bloor



King Blue Toronto



Dundas Square Gardens

DEVELOPER PIPELINE

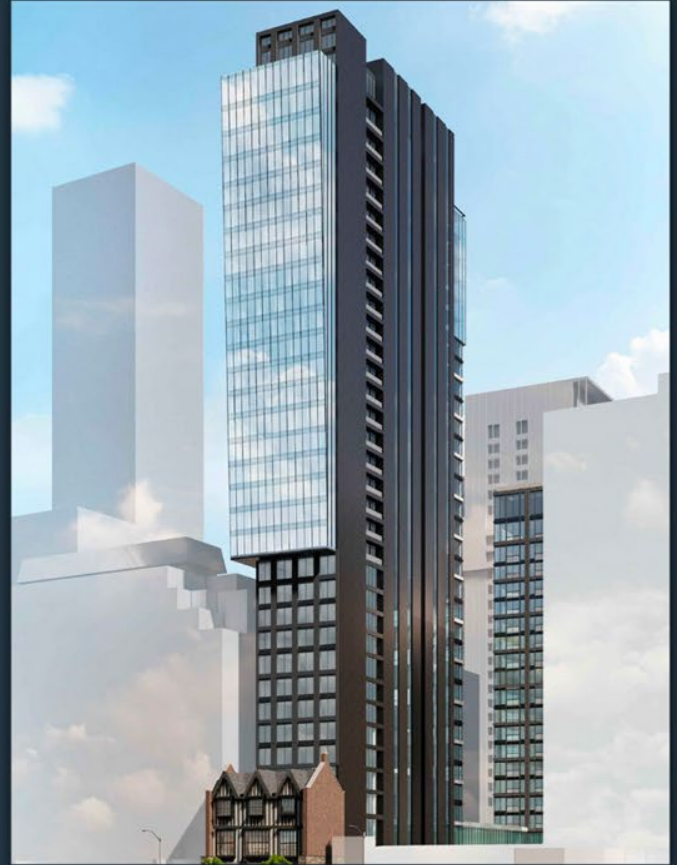
YONGE AND STEELES

- 7028 Yonge
- Proposed site of a 3-tower development
 - 50, 56 and 65 storeys high
 - 1,902 residential units
- 7-storey U-shaped podium containing:
 - Hotel
 - 16,640 sf of ground level retail space
- Direct access to future subway station stop on Steeles



YONGE AND DAVENPORT

- 906 Yonge Street
- Steps from Bloor station
- Surrounded by a neighbourhood with high-end shopping, the city's best restaurants and hotels and more



KING AND GEORGE

- 185 King St E
- 33 storeys, 390 units
- A future mixed use hotel & residential building in Toronto's Old Town, this building will reside on the oldest continuous block of shops in the city, dating as far back as 1834
- Steps away from George Brown College and the St. Lawrence Market
- A five minute walk to the new Google headquarters at 65 King St E



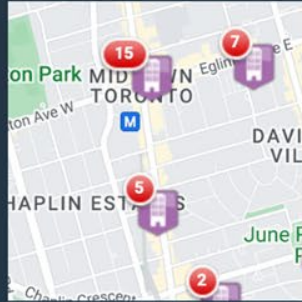
1837 - 1845 BAYVIEW

- Southeast corner of Bayview Avenue and Broadway Avenue.
- 3 minutes from the Eglinton Crosstown LRT station
- Near many community centres, schools, and shopping destinations
- Designed by IBI Group

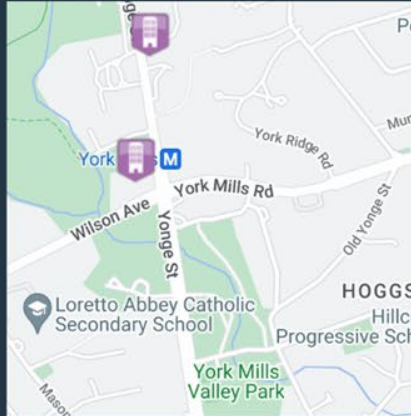


THE FIRST BUILDING TO YONGE AND YORK MILLS IN 20 YEARS

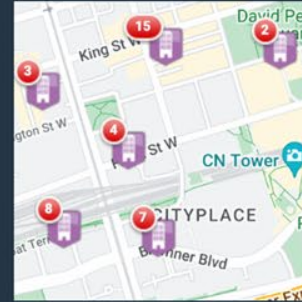
Yonge & Eglinton



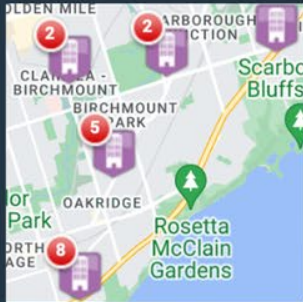
Yonge & York Mills



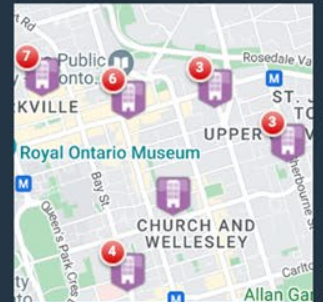
Entertainment District



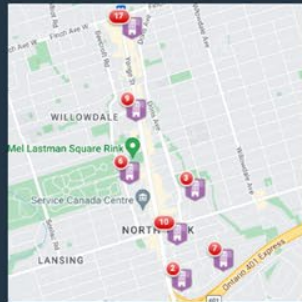
Scarborough



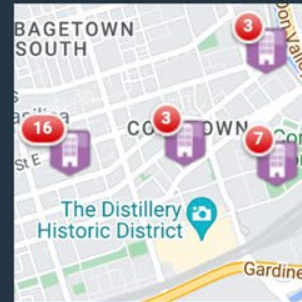
Yorkville



Yonge & Finch - Sheppard



Liberty Village



LOCATION



The first project to Yonge and York Mills in 20 years.



CONNECTIVITY

- Direct access to York Mills subway station
- Steps to GO transit
- Seconds from HWY 401



ACCESSIBILITY



AREA



- **Situated on the edge of Hoggs Hollow, amongst Toronto's most sought-after neighbourhoods**
- **Parks, trails, and leisure activities:**
 - Don Valley Golf Course, Rosedale Golf and Country Club, Toronto Cricket, Skating and Curling Club and nearby tennis courts
- **Arts and Culture:**
 - Mel Lastman Square and the Meridian Arts Centre
- **Shopping and Dining:**
 - Yonge-Sheppard Centre, Bayview Village, Yorkdale, Shops on Don Mills, and Fairview Mall, Miller Tavern, Auberge du Pommier

AREA

Public Schools

Armour Heights P.S.
Grades PK - 6

St. Andrew's Middle
School
Grades 6 - 8

York Mills Collegiate
Institute
Grades 9 - 12

ÉS Étienne-Brûlé
Grades 7 - 12

Private Schools

Don Valley Academy
Grades 9 - 12

Glen Briar Academy
Grades K - 8

Bannockburn School
Grades PK - 8

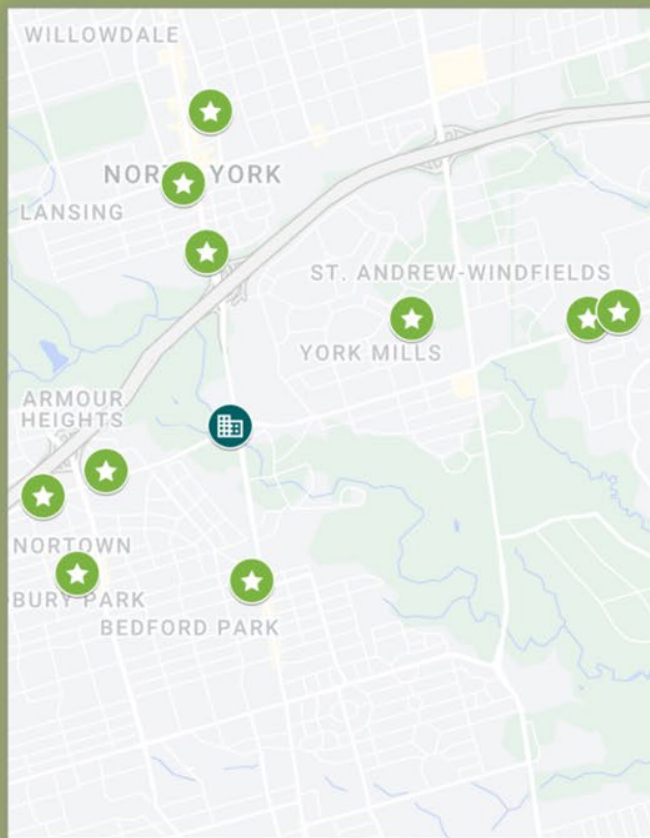
Crown Academy
Grades 9 - 12

Other Schools

Claude Watson School
for the Arts
Grades 4 - 8

Alternative Schools

Dunblaine School
Grades 1 - 8



AMENITIES

Mezzanine

- Dance Studio
- Golf Simulator Room (with bar)
- Gym
- Infrared Sauna
- Steam Room
- Treatment Room
- Yoga Studio
- Mahjong Room
- Guest Suite

Outdoors (Various Levels)

- Mini Golf Course
- Games Area
- Seating Area
- Toddler Area
- Cabana with BBQ
- Fire Pit
- Private Dining
- Pool



Ground Floor (West)

- Bike Storage
- Library/Lounge
- Mailroom and Parcels
- Pet Wash
- Vestibule
- Office
- Reception
- Utility

Ground Floor (East)

- Admin Office
- Lounge
- Mailroom and Parcels
- Reception
- Security
- TTC Vestibule
- Vestibule
- Barrier Free Bathroom

... And More

UNIT MIX

Podium - 9 Storeys
East Tower - 14 Storeys
West Tower - 28 Storeys

713 units

*Combo units will be available

	1 BR	1 BR+D	2 BR	2 BR+D	3BR
Park Tower	442 - 584	545 - 587	649 - 756	705 - 713	830 - 1008
The Fairways	454 - 569	571 - 595	649 - 649	-	872 - 908
The City Tower	454 - 569	545 - 587	644 - 770	664 - 683	872 - 908
The Plaza	462 - 518	692 - 692	752 - 752	-	-

