

HORIZON

20.86160, -156.16613

HORIZON



5

BUILDINGS

4

STOREYS

314

UNITS

±533-854

SQ.FT. PLANS

\$300's

STARTING FROM

2027

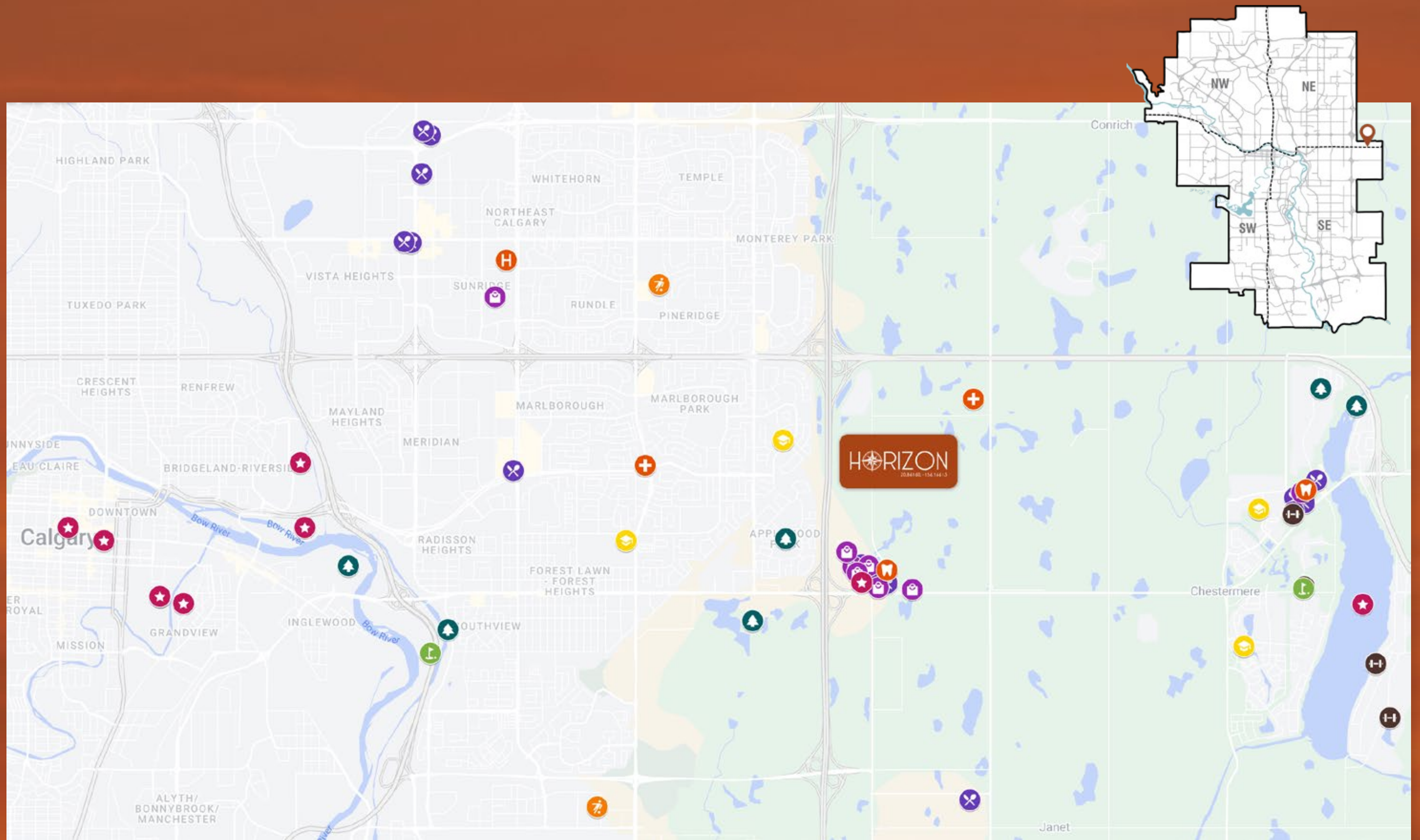
OCCUPANCY











LOCATION



The Canadian Brewhouse

180 Marina Dr | 9 min drive

When you come to The Canadian Brewhouse, you'll feel like you're right at home, because our house is your house...only we have way more TVs! That's right, you won't find a better selection of screens for watching the sports you love anywhere else!



South St. Burger

409 E Hills Blvd SE | 2 min drive

Our Seemingly endless combinations of gourmet toppings will elevate your burger experience. Sure, you'll have your favourites, but at South Street Burger, no two burgers need ever to be the same.



Olive Garden

333 36 St NE | 12 minute drive

At Olive Garden, we know that life is better together and everyone is happiest when they're with family. From never ending servings of our freshly baked breadsticks and iconic garden salad, to our homemade soups and sauces, there's something for everyone to enjoy.



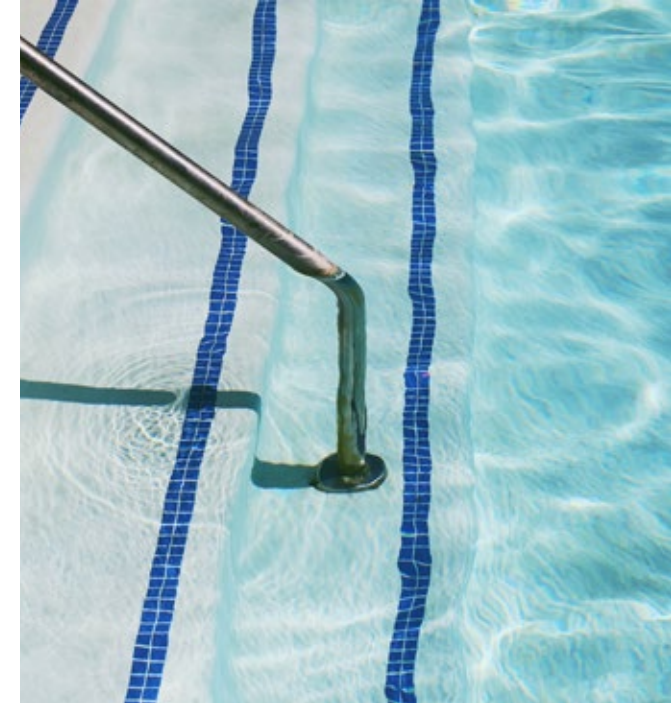
UNWIND



Village Square Leisure Centre

623 56 St NE | 9 min drive

Village Square Leisure Centre is a multi-purpose facility with an indoor water park, wave pool, and waterslides, ice rinks and gymnasium. Our indoor pool has been rated as one of the best in Canada.



HeatherGlen Golf Course

234024 Range Rd 285 | 10 min drive

In a serene area just outside busy Calgary, you'll find HeatherGlen, a nearby golfing destination with 18 holes of adventure amid beautiful city and mountain views.



Sole Balance Yoga

797 East Chestermere Drive | 12 min drive

The only Yoga Studio in Chestermere located right on Chestermere Lake. Sole Balance Yoga focuses on the needs and abilities of each and every student.





East Hills Shopping Centre

75, E Hills Blvd SE | 2 min drive

Located at the intersection of 17 Avenue South-East & Stoney Trail Extension, this unenclosed centre offers more than 67 brand name stores including Costco, Walmart, Cineplex, Marshalls, PetSmart, Michaels and Staples.

Sunridge Mall

2525 36 St NE | 14 min drive

Sunridge Mall is the dominant shopping centre in Northeast Calgary - the fastest growing quadrant of the city. The centre's unique mix of shops and services make Sunridge Mall one of the largest shopping destinations in the city.

Chestermere Station

135 Chestermere Station Way | 10 min drive

Chestermere's premier shopping destination in the heart of the city featuring a wide selection of restaurants, services and shopping including Safeway, Shopper's Drug Mart and Boston Pizza.

SHOP



EXPLORE



Chestermere Lake

208 W Chestermere Dr | 10 min drive

Located east of Calgary, Chestermere Lake is a beautiful 4.8km long lake that provides many water activities. Boaters are welcome on the lake. Try out your wakeboard, water skis, or tubes.



Downtown Calgary

20 min drive

Whether you're adventuring the wild side of the city at the Calgary Zoo, or soaring high in the sky taking in views from atop the Calgary Tower, our city has a unique and thrilling assortment of experiences just steps from your front door.



Banff National Park

1h 20 min drive

Live a road trip away from Canada's first national park and one of the most sought after tourist destinations in the world. Catch scenic mountain views from right inside the city, or venture west for a weekend getaway.





UNIT SPECS

The Buildings

- Peace of mind provided through our comprehensive warranty program: 1 Year on Workmanship & Materials, 2 Year Warranty of Delivery & Distribution Systems, 5 Year Building Envelope Coverage, and a 10 Year Structural Warranty
- Comprehensive coverage including deposit payments protected by the Alberta New Home Warranty Program
- Built-in smoke/heat detectors and in-suite water sprinkler system
- Individual suite utility metering for maximum energy savings with individual thermostat control
- Lobbies, hallways and common amenities adorned with luxurious finishings inspired by *Gucci*, *Hermès* & *Armani Casa*.

The Suites

- Beautifully appointed interiors by our award-winning interior design team with a choice of 2 timeless interior colour schemes
- Approximately 9 FT ceilings throughout suite (*excluding dropped areas required for mechanical, plumbing and/or electrical*)
- Energy efficient aluminum framed windows and oversize doors/patio sliders (*as per plan*)
- Brilliant lighting with custom made LED contemporary light fixtures and pot lights throughout
- Smooth panel doors with levered anti-scuff and scratch door hardware throughout
- Modern sleek line profiled painted baseboards, door frames and casings

The Kitchens

- Floor to ceiling ergonomic TRUspace® contemporary kitchen cabinetry featuring premium finishes, accented by soft close door and drawer hardware and integrated storage
- Polished quartz eased edge countertops
- Stainless steel undermount sink with industrial high arc pull out single lever faucet
- Contemporary full height quartz backsplashes
- Custom made brushed metal door hardware
- Versatile easy access cutlery drawer
- Deep drawer for pots and pan
- High end energy saving appliance package including integrated panelled dishwasher & refrigerator, gas range, front-load washer & dryer (*as per plan*)

The Bathrooms

- Polished quartz eased edge countertops
- TRUspace® integrated storage cabinetry
- TRUspace® vanity with maximum storage in mind
- Porcelain top mount sink
- Matching bathroom hardware and accessories
- Environmentally conscious fixtures, shower heads, and toilets
- Safety and pressure-balancing mixing valves for tub and showers
- 10mil glass shower door (*as per plan*)

AMENITIES



EXERCISE ROOM

GYM / WEIGHT ROOM



SPIN STUDIO

YOGA ROOM / SPIN STUDIO



PET SPA

GROOMING & WASH STATION



OWNER'S LOUNGE

MEDIA / REC ROOM



WORKSHOP / BIKE ROOM

BIKE STORAGE & WORKSHOP





L.A. COLOUR PALETTE



N.Y. COLOUR PALETTE



For over 35 years, Truman has proudly and persistently worked to build a better Calgary. As an Alberta based family-owned developer and builder, we have successfully created thousands of new homes and over a million square feet of retail, office, and industrial space within the Calgary metropolitan area.

Truman's core belief is that everyone can Live better. From master planned new communities to individual mixed-use buildings in redeveloping and developing neighborhoods, we're committed to building great places through great design. Places that so many Calgarians have chosen to make an investment and call home.



BUILDING
CALGARY'S
BEST

HORIZON

20.86160, -156.16613