



ADDINGTON
PARK
CONDOMINIUMS







Add the exceptional to your everyday.

Welcome to Addington Park, North York's newest landmark address. Creating a bold architectural statement against the skyline, this midrise boutique condominium is destined to transform the Yonge and Sheppard neighbourhood. Note how its dazzling contemporary design connects seamlessly to the welcoming streetscape. Come discover how Addington Park adds the exceptional to everyday living, in so many ways.



Intimate.
Iconic.
Inspired.



Add an ideal urban location.

When you live this close to urban conveniences and bountiful nature, you have the luxury of enjoying every day exactly as you wish. This Sheppard Avenue West address is situated in an established neighbourhood, just minutes from the subway and a multitude of shopping, dining and entertainment options on Yonge Street. Or explore Earl Bales Park's meandering green spaces, trails, the river and more only minutes away. It all becomes possible here.

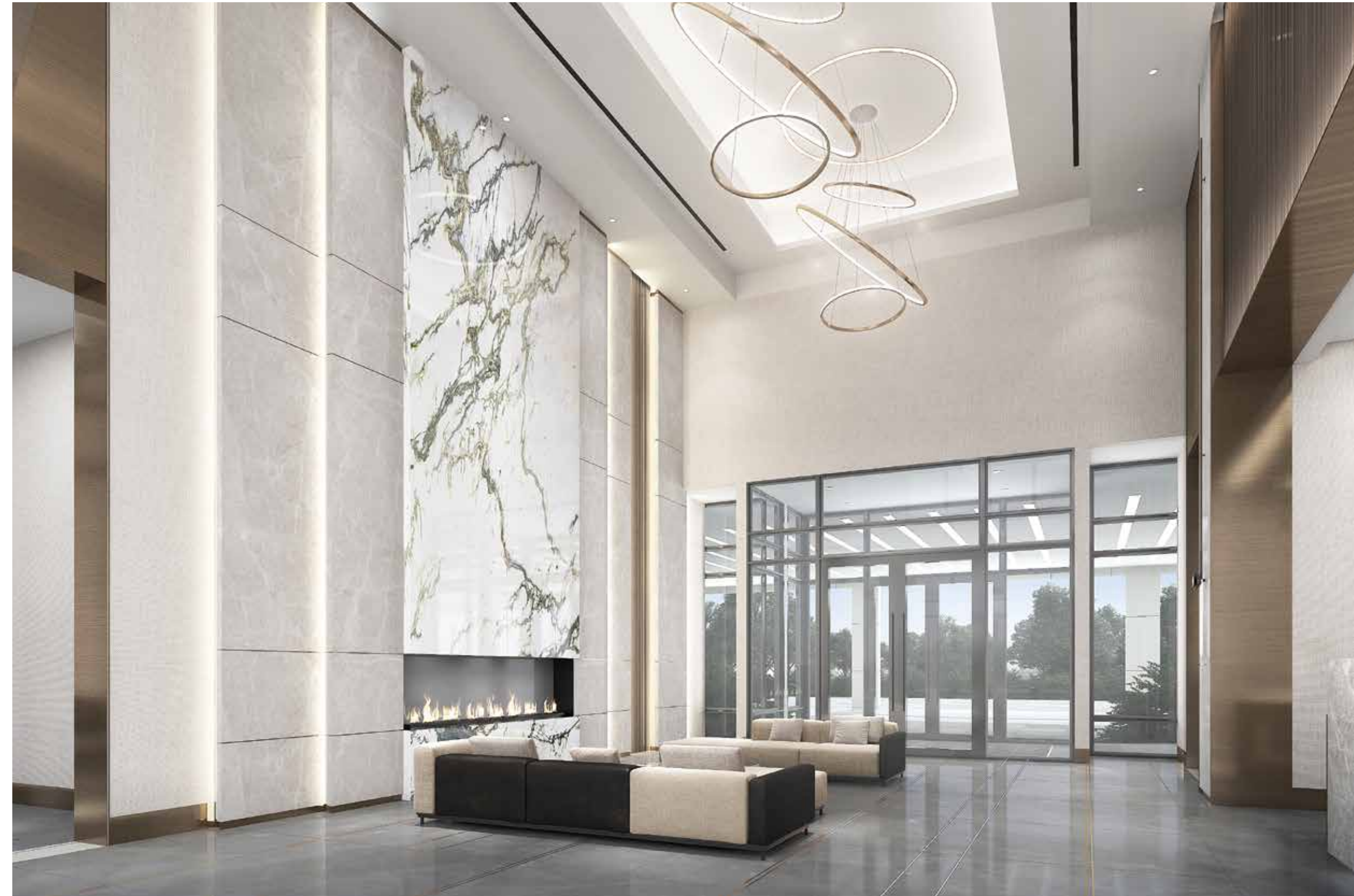
Add a hotel-inspired entrance.

Follow the stone-clad driveway on the quiet north side of the building, where a magnificent covered entrance shelters you from the elements and ushers you into the stunning glass lobby in style. Whether you're arriving at the end of a busy day or are departing for a night on the town, the statement-making entrance sets the tone for the possibilities ahead.





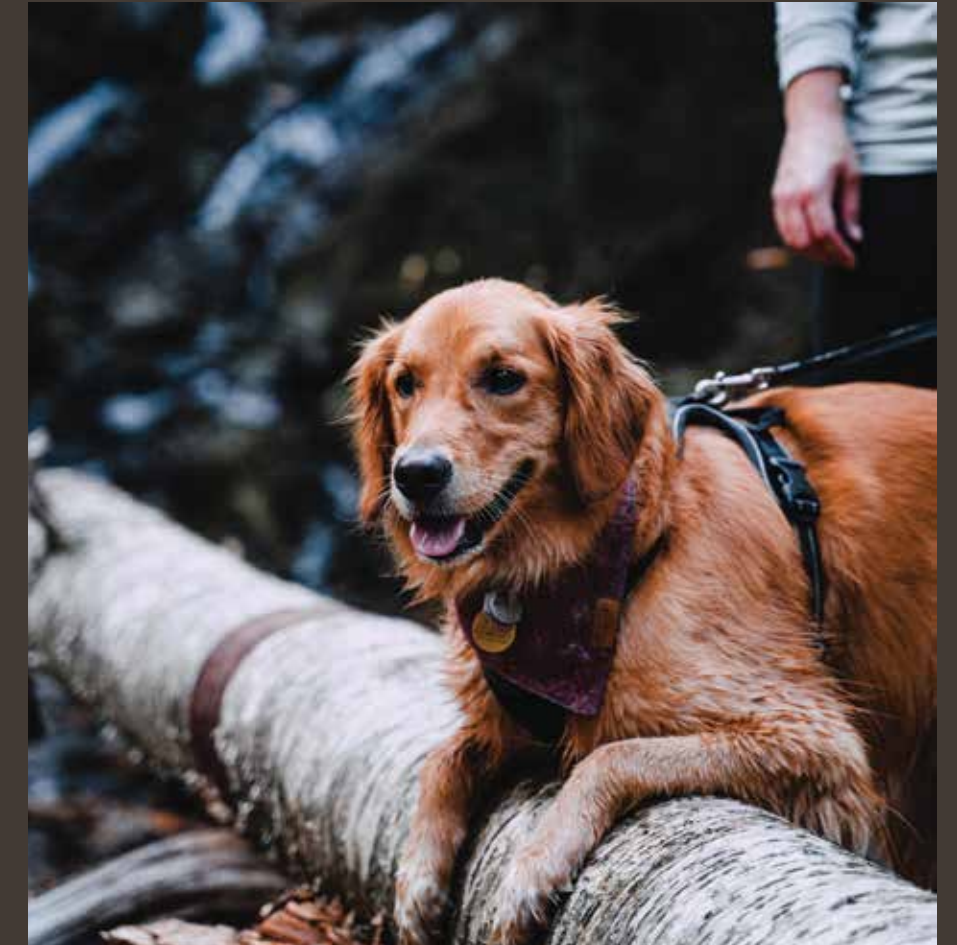
The lobby is designed to speak volumes and radiate richness, with its double-height ceiling, marble accents and 24-hour Concierge Services.



The seating area with warming fireplace provides the perfect spot to await your ride, converse with neighbours or regroup before heading up to your suite.

Add irresistible conveniences.

Fancy fresh sushi or garlicky masala? In search of that 1996 French Cab Sauv? Need the latest bestseller, a hot cup of java, a crisp new white shirt? It's all just a few minutes away.



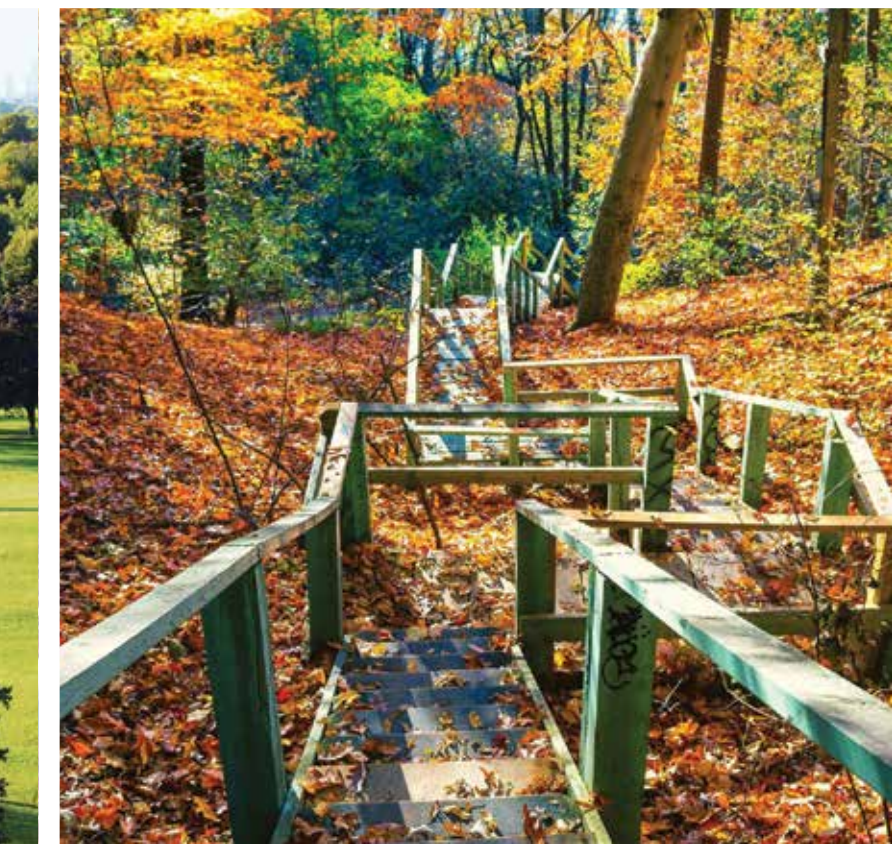
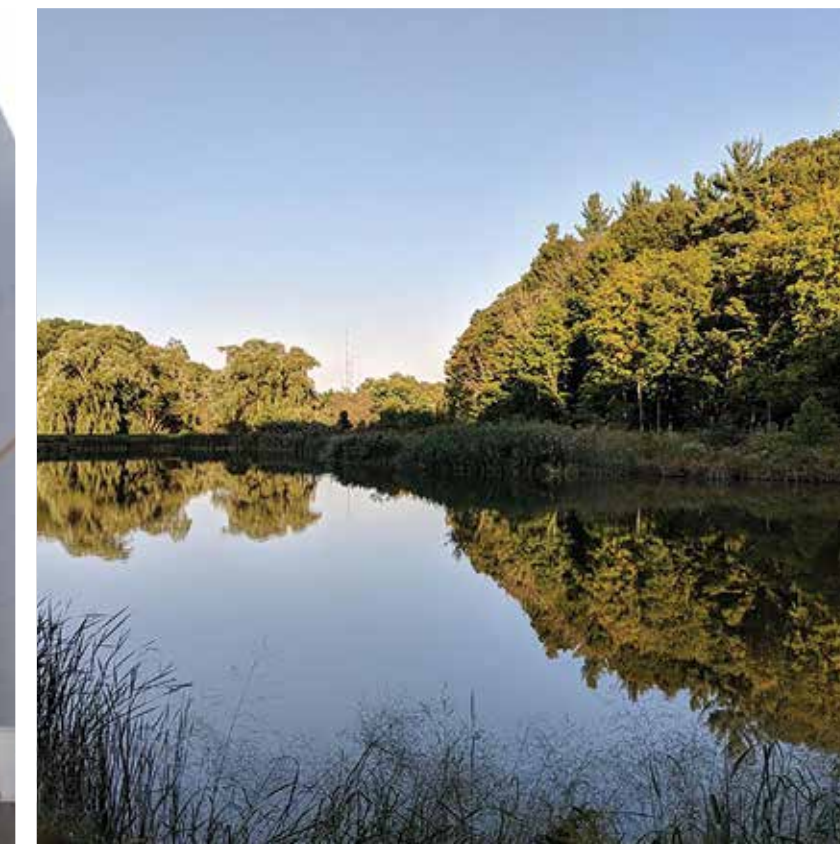
Add natural beauty.

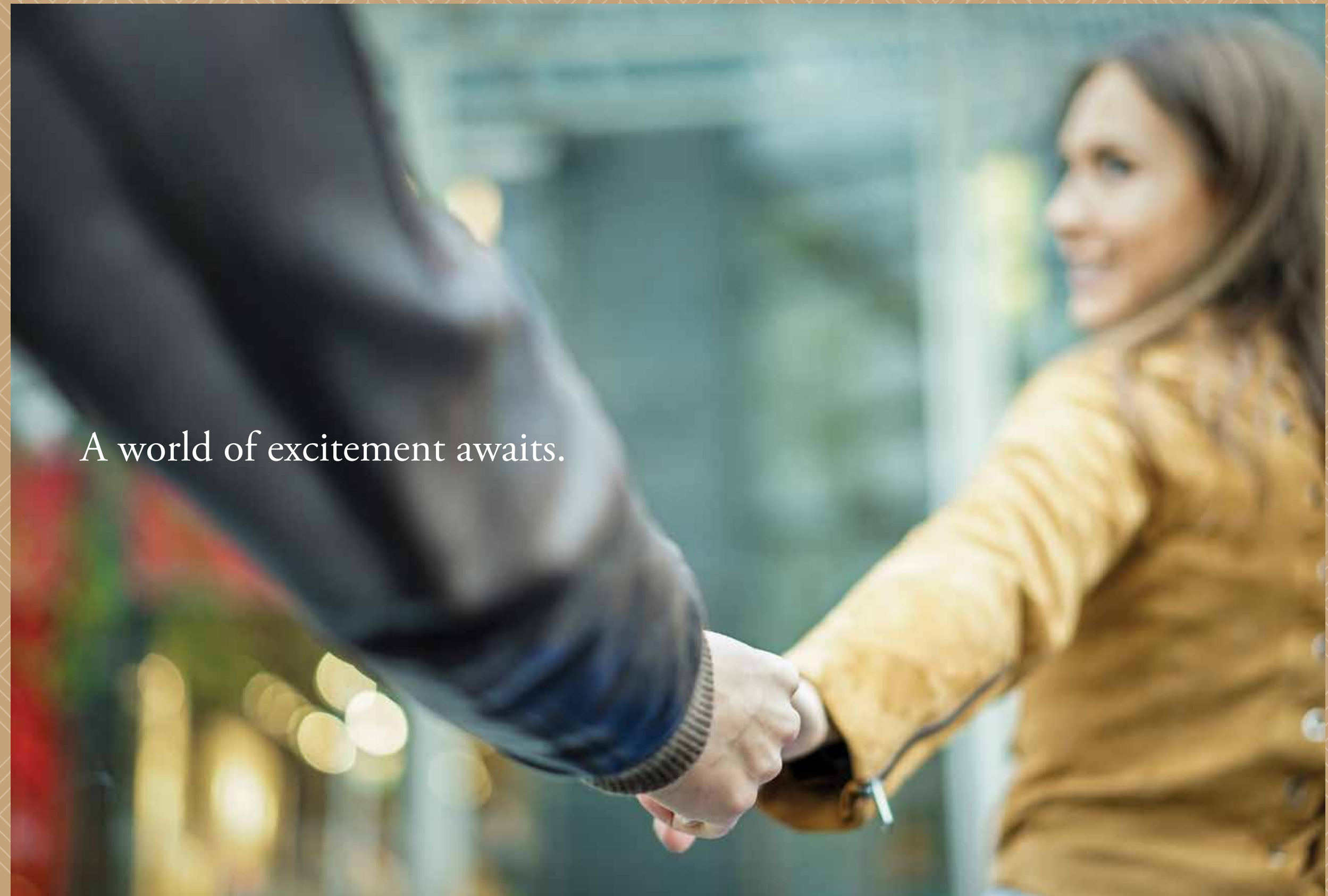
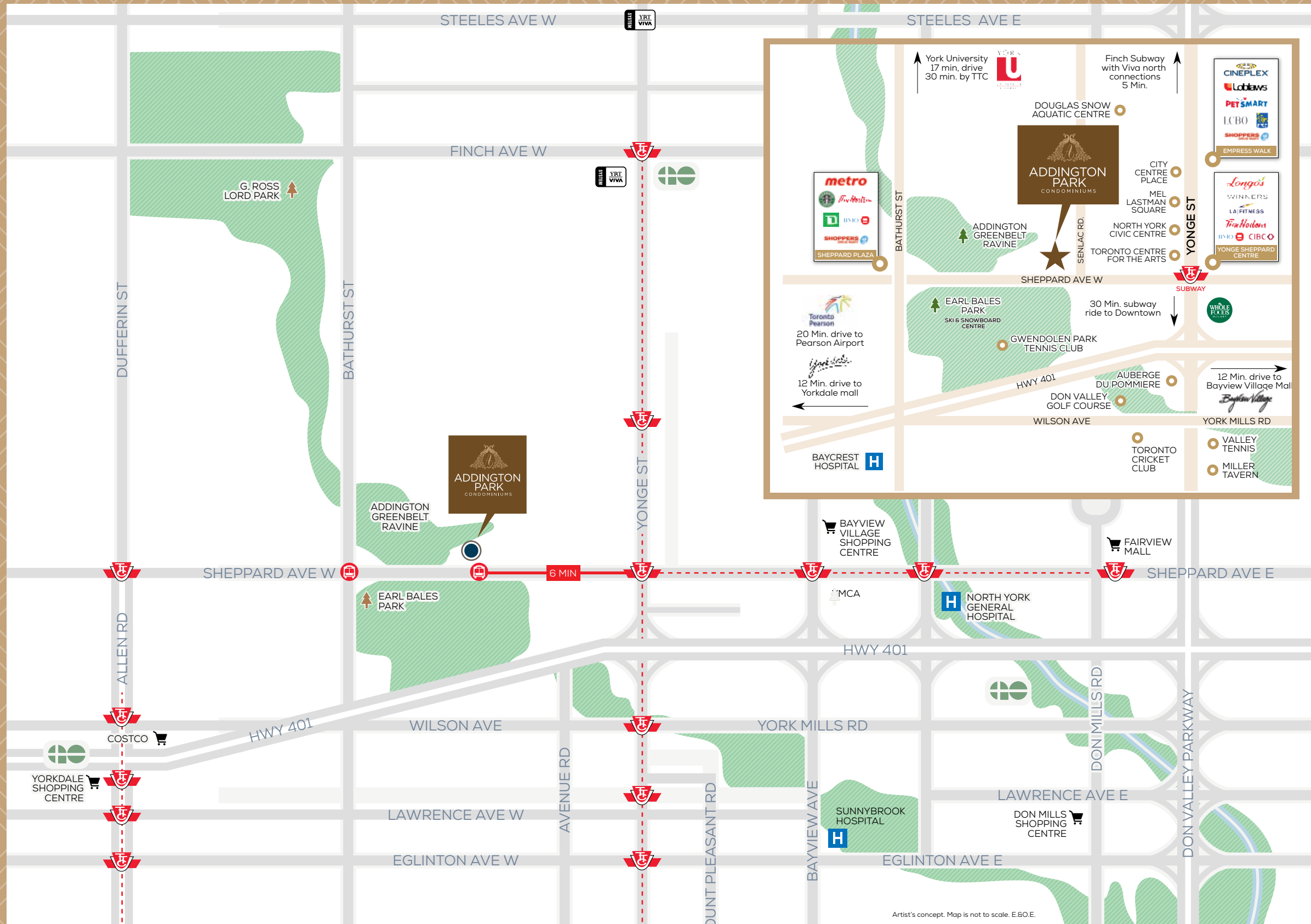
What would you do with 51 hectares of green space practically in your backyard? Get some steps in before work? Take the dog for a relaxing stroll? Go biking or roller blading? Even take ski or snowboard lessons at one of Toronto's only urban ski hills? Oh, the possibilities.



The Yonge and Sheppard neighbourhood is abuzz with possibilities. You're just minutes from top brand grocery stores and restaurants, culture and entertainment, unique undiscovered local finds, and other premium shopping options are a short drive away..

When you tire of urban, retreat to nature in nearby Earl Bales Park, close to Bathurst and Sheppard. Admire the flora and fauna on a marked trail, stroll by the river or enjoy a concert in the amphitheatre. Explore nature right in your own backyard.







Unwind. Uncork. Unplug.

Whether you're retreating to enjoy some well-earned solitude, gathering with friends to raise a glass, or watching the game, the posh Park Lounge is designed to de-stress and impress. There's a comfortable seating area, a top-notch demonstration kitchen with dining space, and a dramatic fireplace to help set the tone.

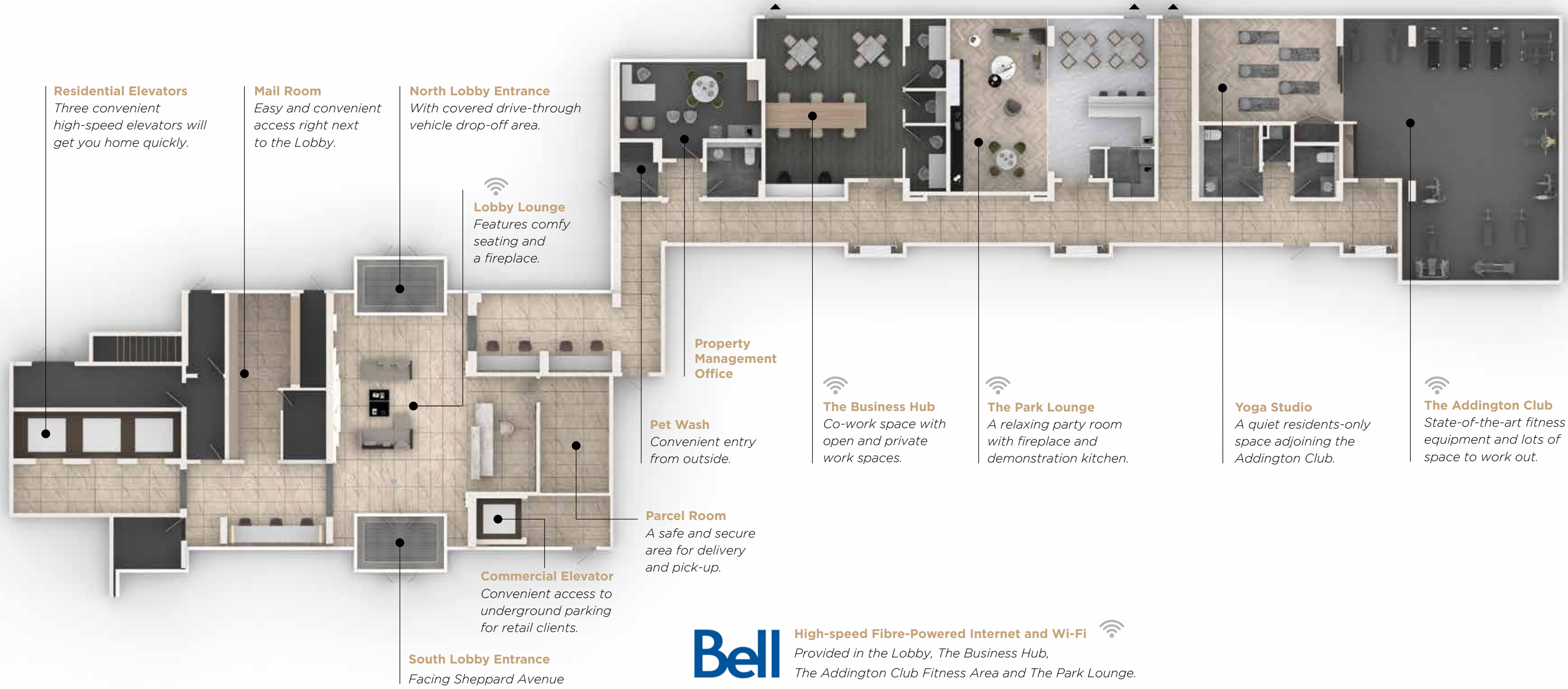


Add life balance.

Downshift in the light-drenched Addington Club and find your zen, or work off the worries of the day. It's well-stocked with state-of-the-art cardio equipment, free weights and resistance machines so you can effectively kiss your gym membership goodbye.



A wealth of hotel-inspired amenities.



Bell High-speed Fibre-Powered Internet and Wi-Fi 
Provided in the Lobby, The Business Hub,
The Addington Club Fitness Area and The Park Lounge.



Connect. Conference. Conduct business.

Need a work-from-home space that works for you? The Business Hub has high-speed internet, comfortable workstations, private offices, meeting spaces and more to keep you productive at home.



Add inspired living spaces.

Your passion for refined living led you here, and it's catered to at every turn. Thoughtful suite layouts include designer touches, luxe finishes, and your choice of 1, 2 or 3 bedroom plans.





Open concept living and dining room areas keep conversations flowing from cocktails to coq au vin – or whatever else is on the menu. Up to 9-foot ceiling heights and expansive windows create a rich sense of space.



Channel your chef's skills in a kitchen designed for greatness featuring sleek European-inspired cabinetry, stone countertops and Kohler faucets and sinks.. Enjoy top-notch Miele appliances including stovetop, range, hood fan, microwave and built-in cabinet finish dishwasher and refrigerator.



Spa-inspired ensuites include luxurious touches like premium ceramic tiles, stone countertops and premium quality Kohler faucets rain showerheads, soaker tubs, toilets and his and her sinks. So blissful, you may be tempted to never re-emerge.



Primary bedrooms are thoughtfully designed oases with spa-like ensuite bathroom retreats and walk-in closets. The perfect place to unwind and relax. Experience how you can fall in love with coming home.



Smart. State-of-the-art. Secure.

Safe and Secure

Enjoy peace of mind knowing your suite includes a self-monitored security system. View designated community cameras, take pictures of suspicious activity, and use live one-way video to view visitors and grant them access.

Keyless Entry

Easily access your suite using your smartphone app or a unique passcode. Allow your guests to freely come and go by providing them secure, personalized access codes.

Smart Home Automation

Simplify your living by easily interacting with your suite using your smartphone app or wall pad. Create and set 'scenes' for different modes, such as morning, evening, or away by controlling your suite lights and thermostat.

A Connected Community

Be part of a community across one app experience. Stay up to date with community messaging, access community calendars, and book shared amenities.

Remote Family Care

Stay connected with loved ones. Family care provides active monitoring while respecting your privacy, sending critical event notifications to your family members or friends, and real-time local response in case of emergencies.



High-speed internet for all.

Addington Park knows how important staying connected is to you. That's why we are offering high-speed internet in our Lobby, Addington Club fitness area, Business Hub co-work area and The Park Lounge.

Plus, we are offering all our residents Bell high-speed internet in every suite. This package provides all the speed you need to stay connected, stream your favourite movies, gaming and more. Another plus you'll love about life at Addington Park.

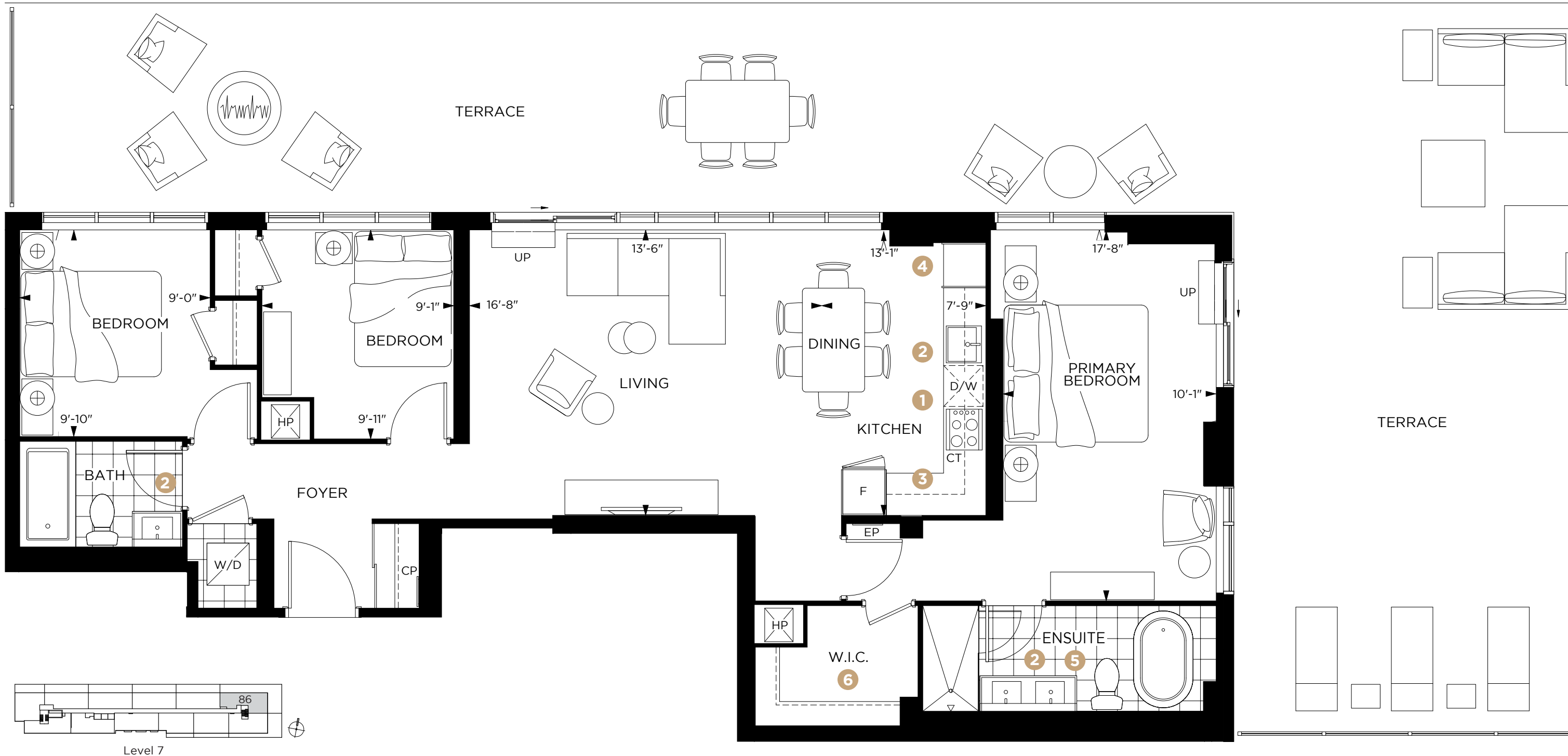
Powered By
Smart ONE

Bell

SUITE 86 3 BEDROOM

1,165 SQ. FT. / TERRACE 1010 SQ. FT.. / TOTAL 2,175 SQ. FT..

THE APEX COLLECTION • 945 - 1,655 SQ. FT..



Addington Park Design Features

These thoughtful features can be found throughout our suite designs.

1. Miele kitchen appliances

Includes stovetop, range, microwave and cabinet finish dishwasher and refrigerator.



2. Kohler plumbing fixtures

Includes kitchen faucets and sinks and bathroom faucets, sinks, toilets, tub and showerheads.



3. European-inspired kitchen cabinetry

Extended uppers and depth for optimum space

4. Optional wine fridge

Keep vintages climate-controlled and close-at-hand

5. Primary bedroom 5-piece ensuite

With free-standing tub, double sinks and walk-in shower.

6. Primary bedroom closet with organizer system

Space to keep couture to casual in organized style.

See Sales Representative for details . Features, finishes and specifications subject to change without notice. E. & O. E..



Life By Design

Addington Developments is a Toronto based development firm with an international reputation for innovation and design excellence. With over 100 developments completed over the past 20 years, they bring a wealth of experience as architects, builders and developers as they introduce their unique vision to the Southern Ontario real estate market.

Understanding that to be successful you need to offer the best quality possible coupled with the finest customer service, they only use the finest materials and craftsmanship in each of their developments. Recognizing that homeowners expect the very best from them, they strive to exceed those expectations every day, with a team comprised of exceptionally talented professionals in every aspect of the development process.

ADDINGTON
DEVELOPMENTS