

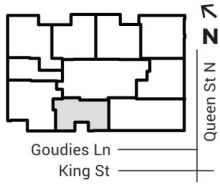
# Suite 1B (Barrier Free)

One Bedroom + Den (*barrier free*) | 705 sq.ft.  
 Interior size: 638 sq.ft., Balcony size: 67 sq.ft.  
 Available on floors: 2 – 32



WINDOW SIZE/CONFIGURATION/LOCATION  
 DEPENDENT ON FLOOR LEVEL OF SUITE



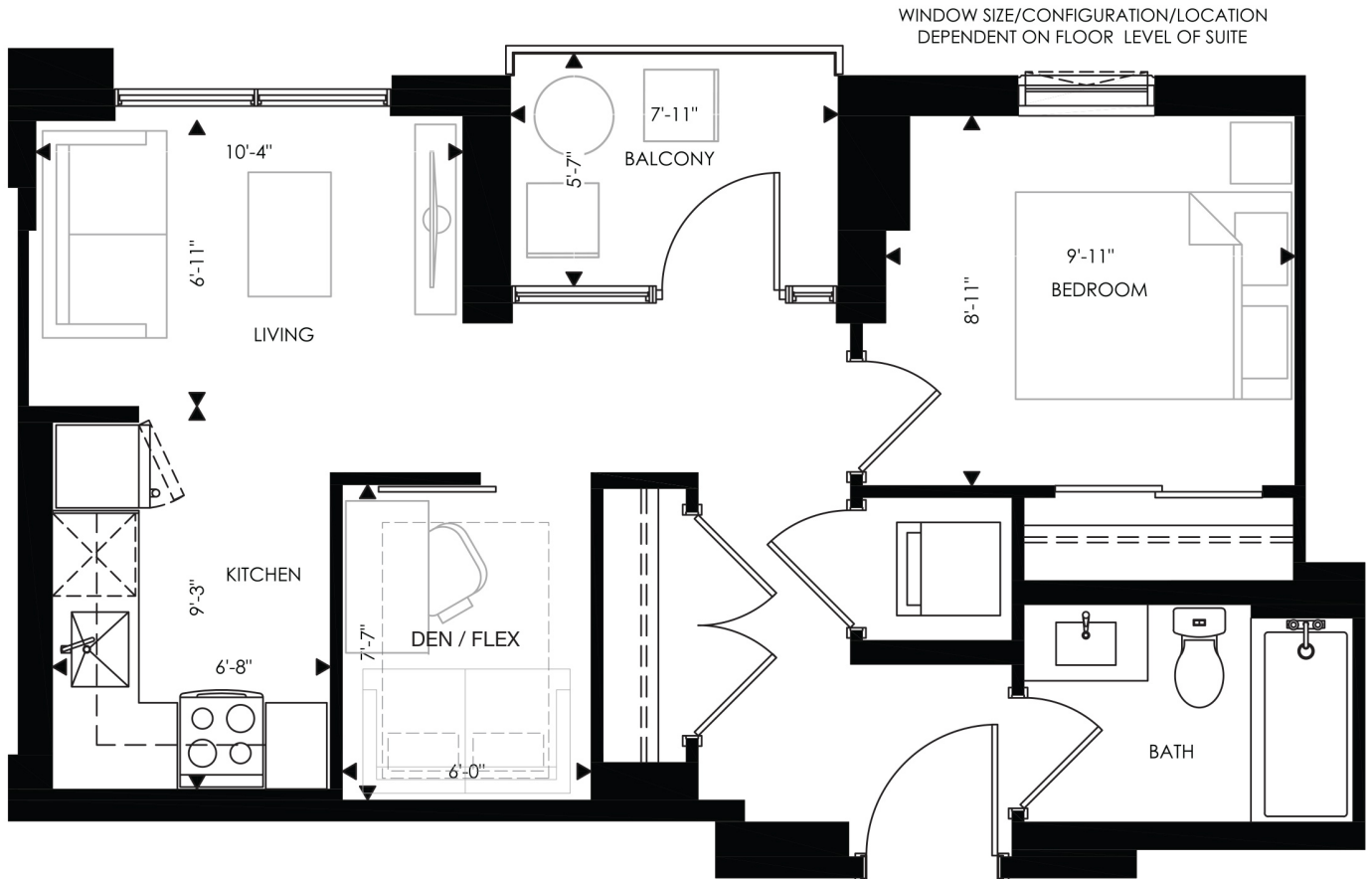


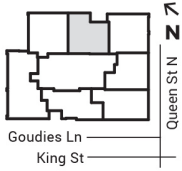
# Suite 1D

One Bedroom + Den | 591 sq.ft.  
 Interior size: 547 sq.ft., Balcony size: 44 sq.ft.  
 Available on floors: 2 – 20



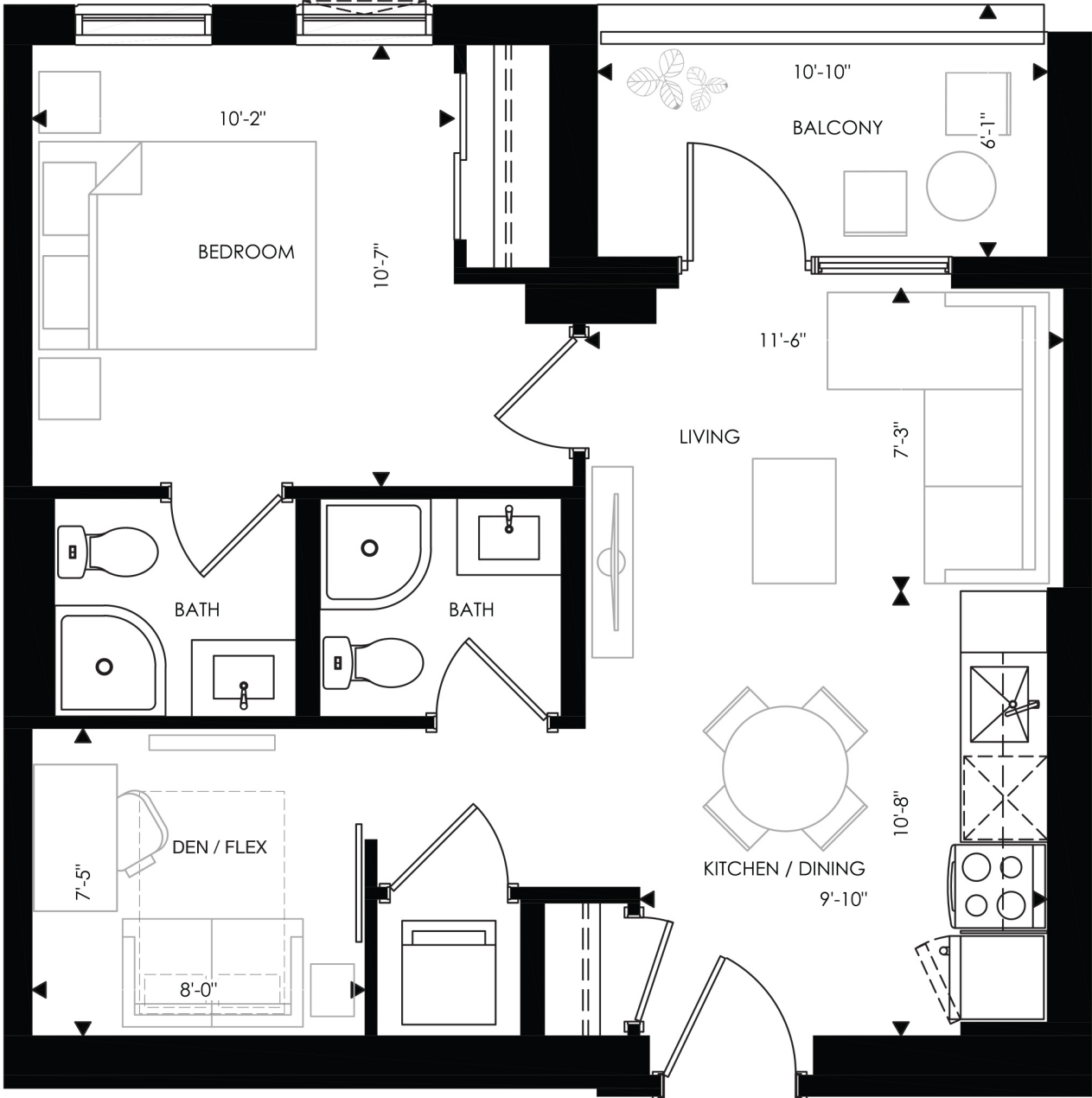
**Q CONDOS**  
 ON QUEEN



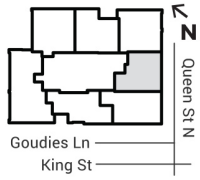


# Suite 1A

One Bedroom + Den | 679 sq.ft.  
 Interior size: 613 sq.ft., Balcony size: 66 sq.ft.  
 Available on floors: 2 – 32

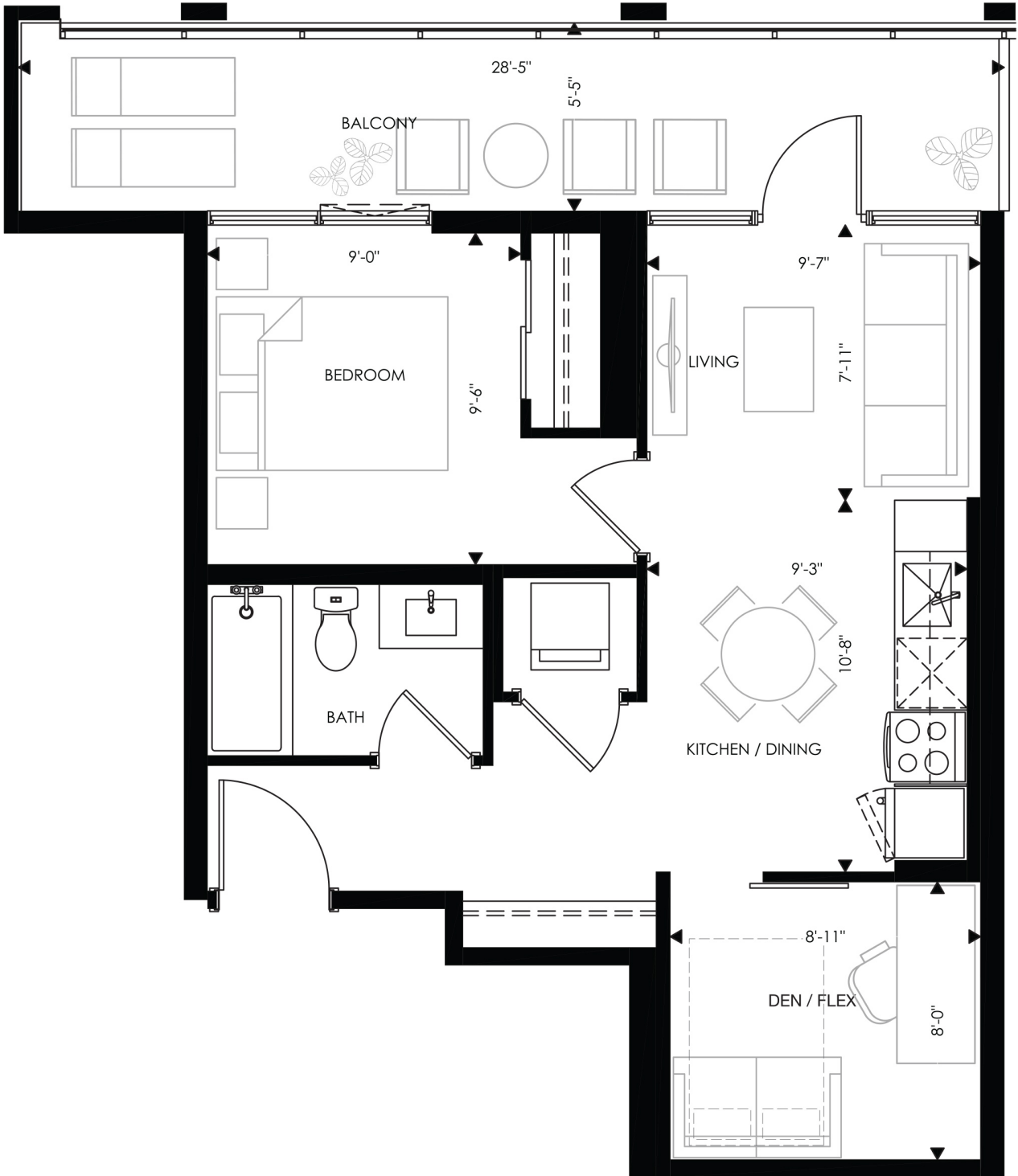


All floor plans, specifications and materials are subject to availability and subject to change without notice. The Vendor shall have the right to substitute products and materials, of no lesser quality, for those listed above or depicted in the plans and specifications. The Vendor shall not be obligated to notify the Purchaser if products and materials are substituted. Natural materials such as wood, marble, granite and stone will have variations in colour and pattern from samples.

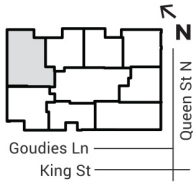


# Suite 1H

One Bedroom + Den | 720 sq.ft.  
 Interior size: 567 sq.ft., Balcony size: 153 sq.ft.  
 Available on floors: 4 – 32

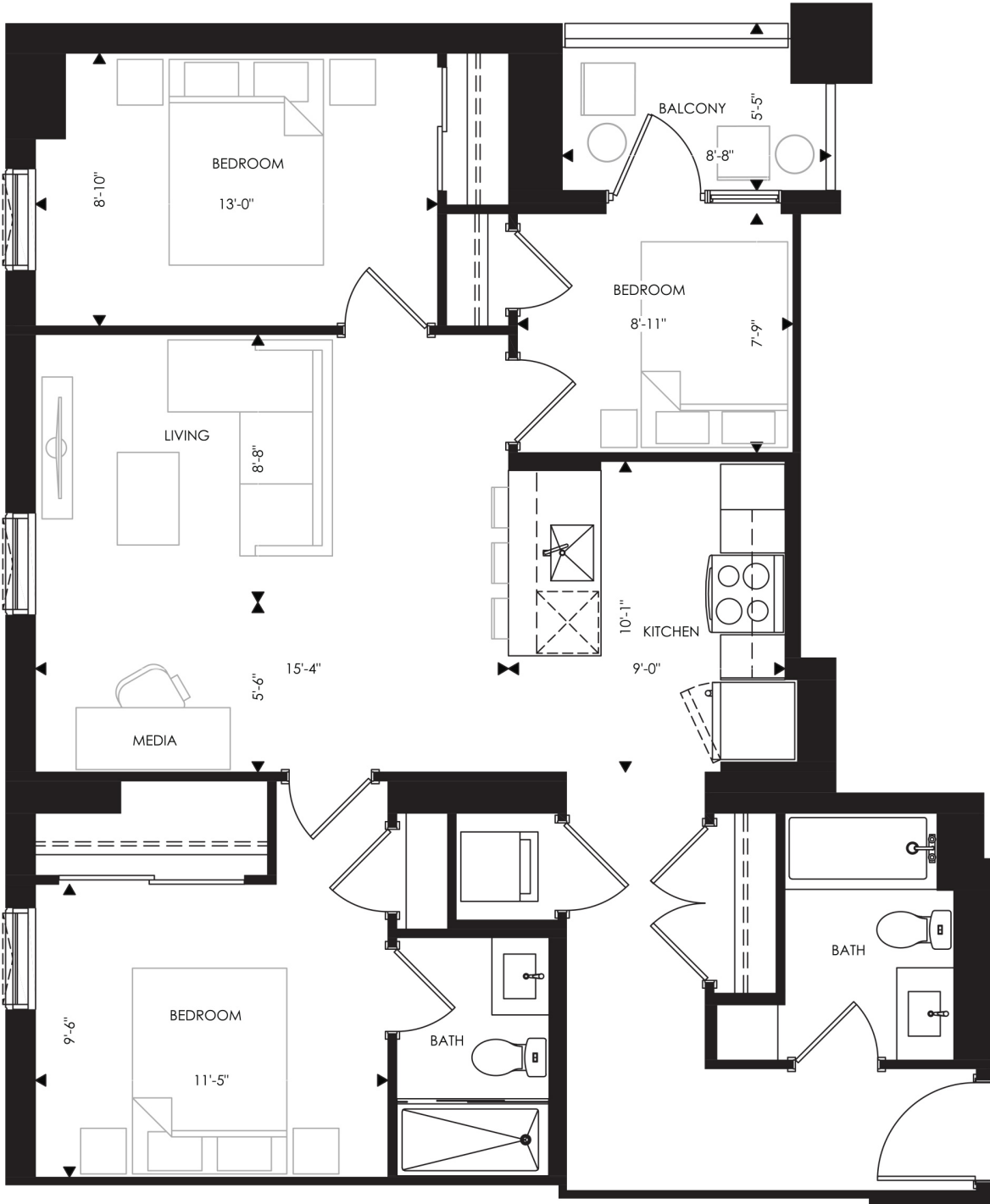


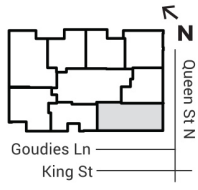
All floor plans, specifications and materials are subject to availability and subject to change without notice. The Vendor shall have the right to substitute products and materials, of no lesser quality, for those listed above or depicted in the plans and specifications. The Vendor shall not be obligated to notify the Purchaser if products and materials are substituted. Natural materials such as wood, marble, granite and stone will have variations in colour and pattern from samples.



# Suite 2D

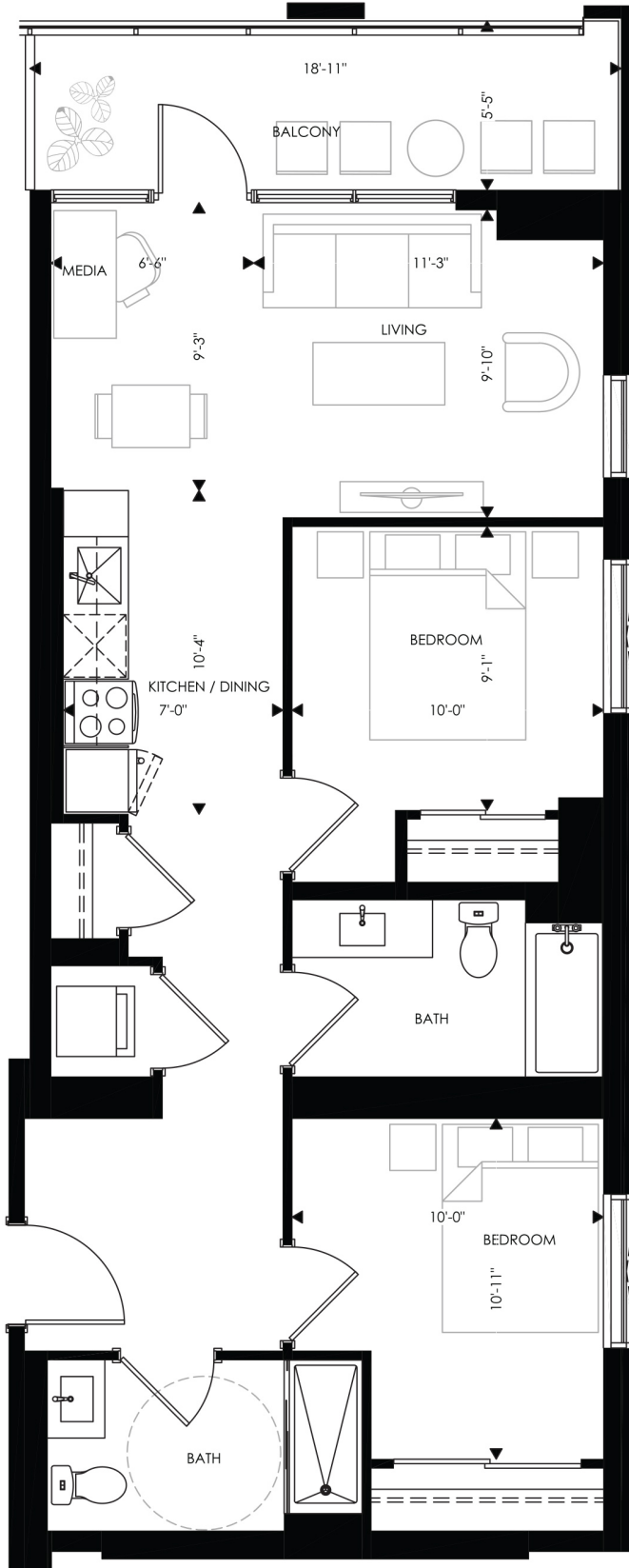
Three Bedroom | 1063 sq.ft.  
 Interior size: 1019 sq.ft., Balcony size: 44 sq.ft.  
 Available on floors: 5 – 8



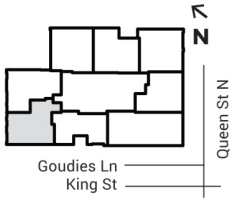


# Suite 2E (Barrier Free)

Two Bedroom (*barrier free*) | 962 sq.ft.  
 Interior size: 860 sq.ft., Balcony size: 102 sq.ft.  
 Available on floors: 6 – 20

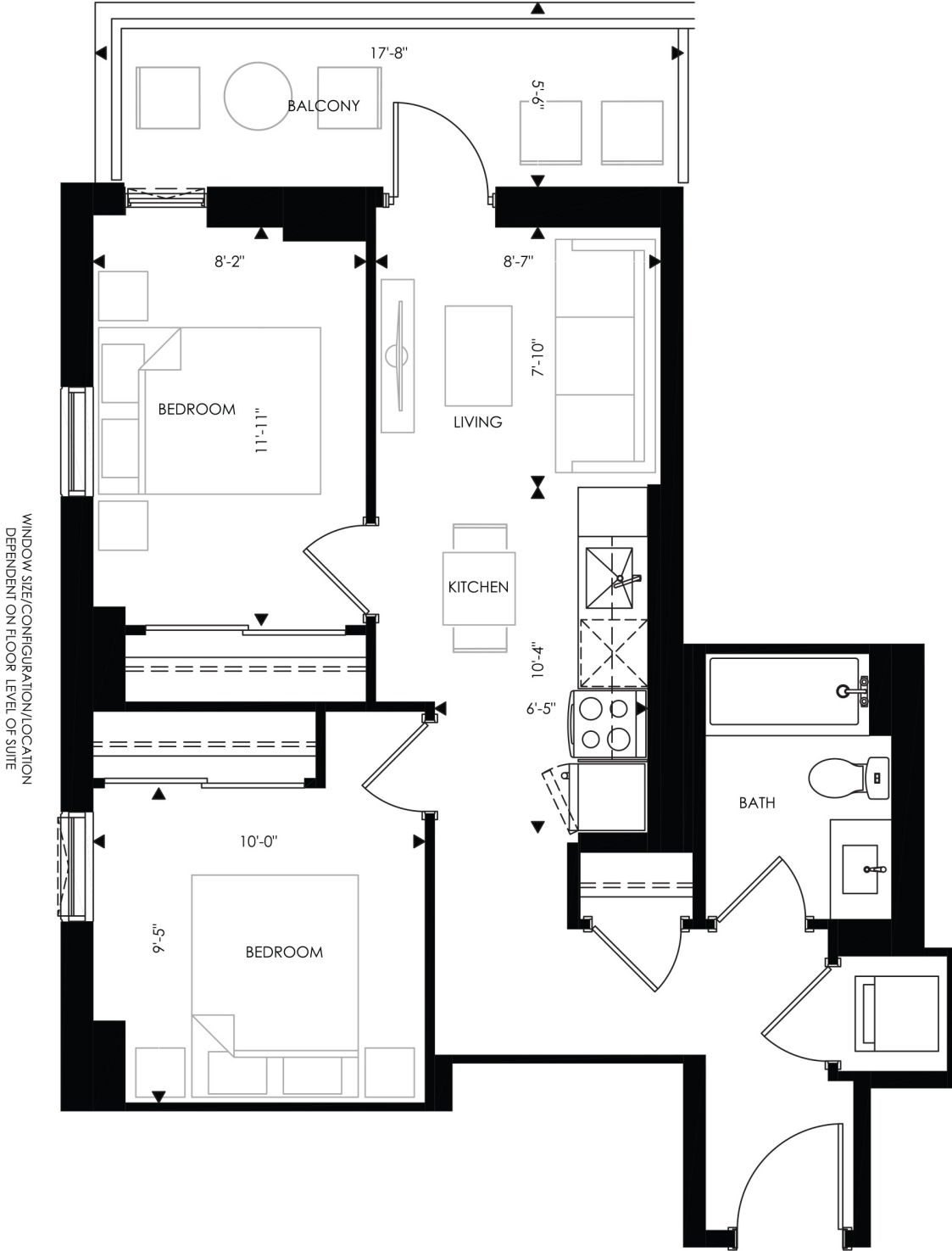


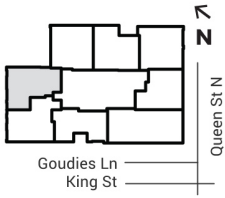
All floor plans, specifications and materials are subject to availability and subject to change without notice. The Vendor shall have the right to substitute products and materials, of no lesser quality, for those listed above or depicted in the plans and specifications. The Vendor shall not be obligated to notify the Purchaser if products and materials are substituted. Natural materials such as wood, marble, granite and stone will have variations in colour and pattern from samples.



# Suite 1J

Two Bedroom | 735 sq.ft.  
Interior size: 637 sq.ft., Balcony size: 98 sq.ft.  
Available on floors: 9 – 20





# Suite 1K

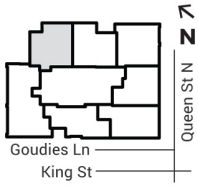
Two Bedroom | 759 sq.ft.  
Interior size: 626 sq.ft., Balcony size: 133 sq.ft.  
Available on floors: 9 – 20



**Q CONDOS**  
ON QUEEN

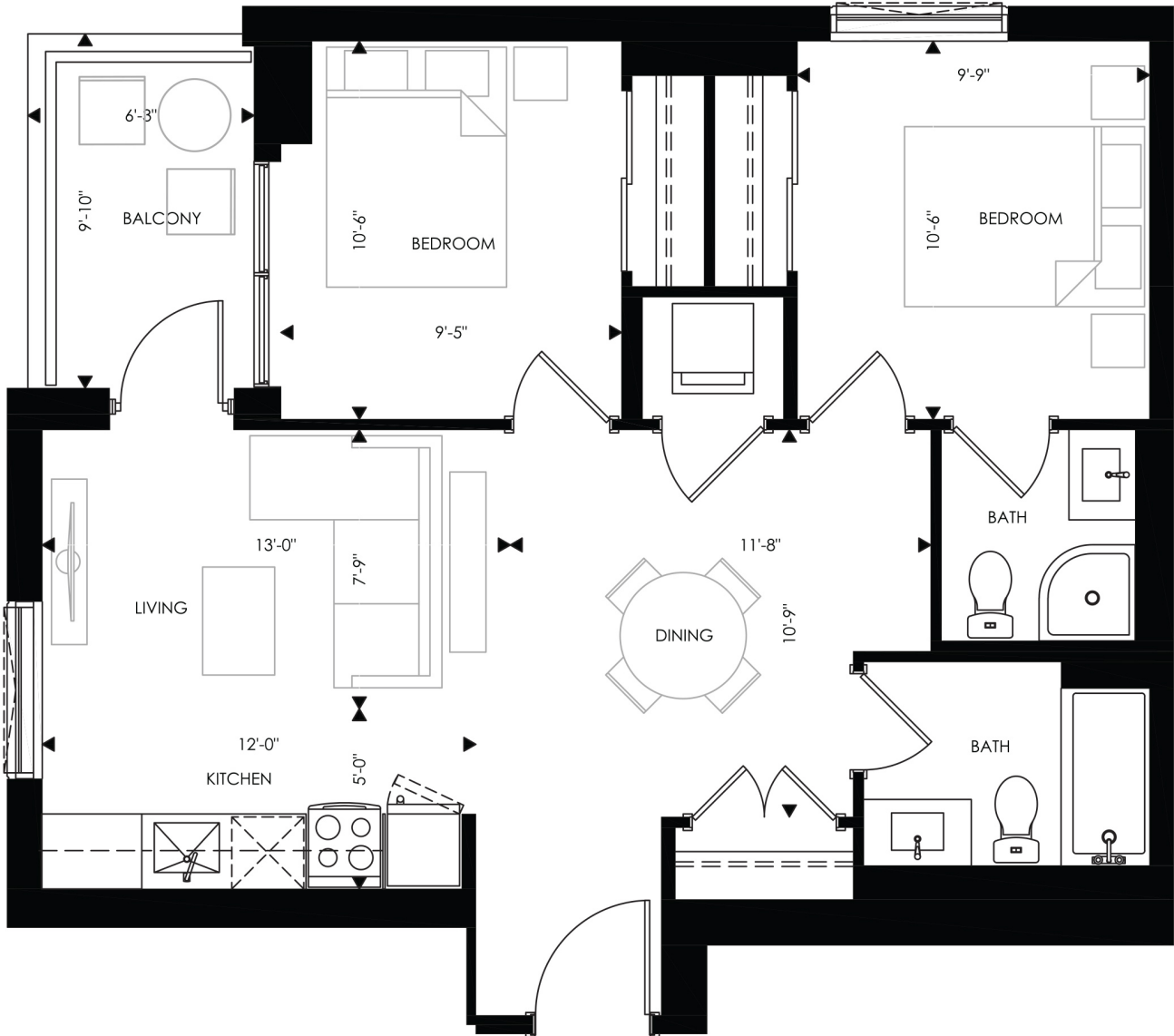


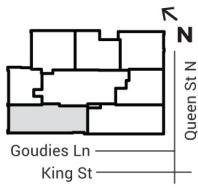




# Suite 1L

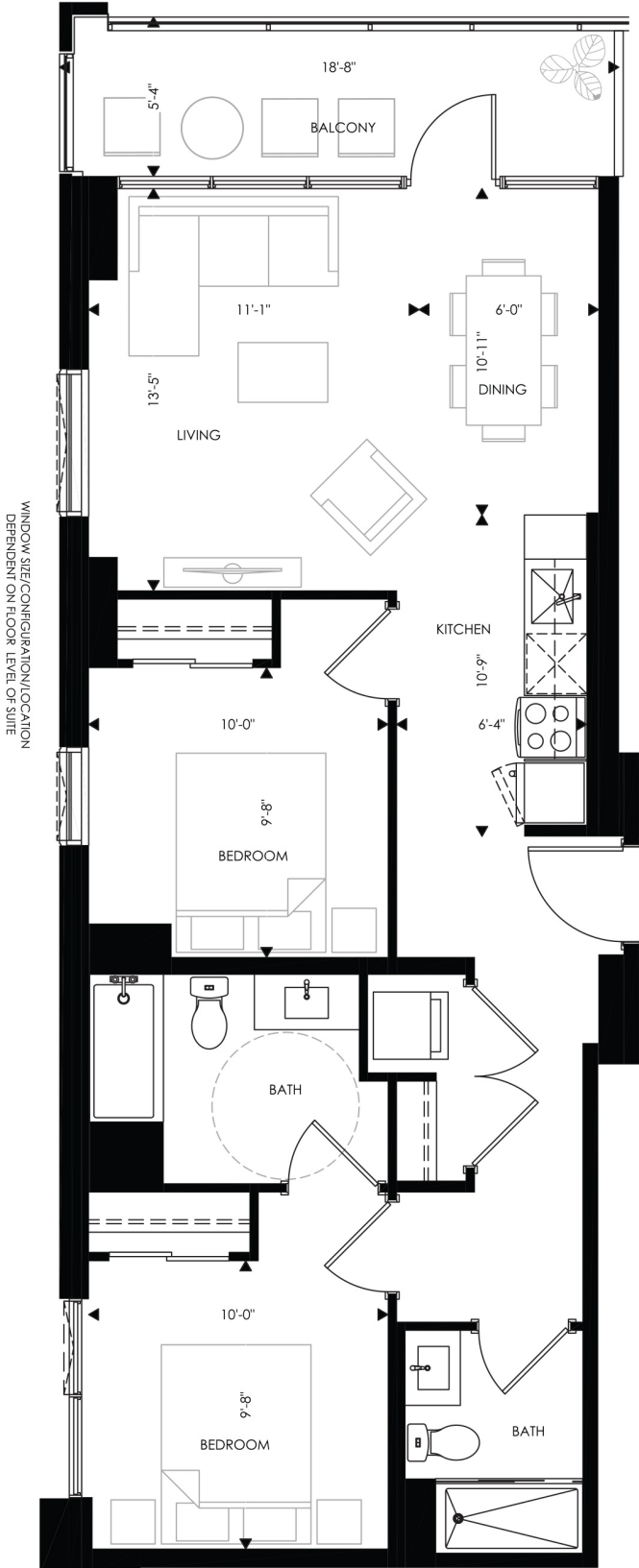
Two Bedroom | 845 sq.ft.  
 Interior size: 783 sq.ft., Balcony size: 62 sq.ft.  
 Available on floors: 10 – 32

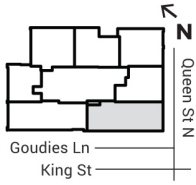




# Suite 2H (Barrier Free)

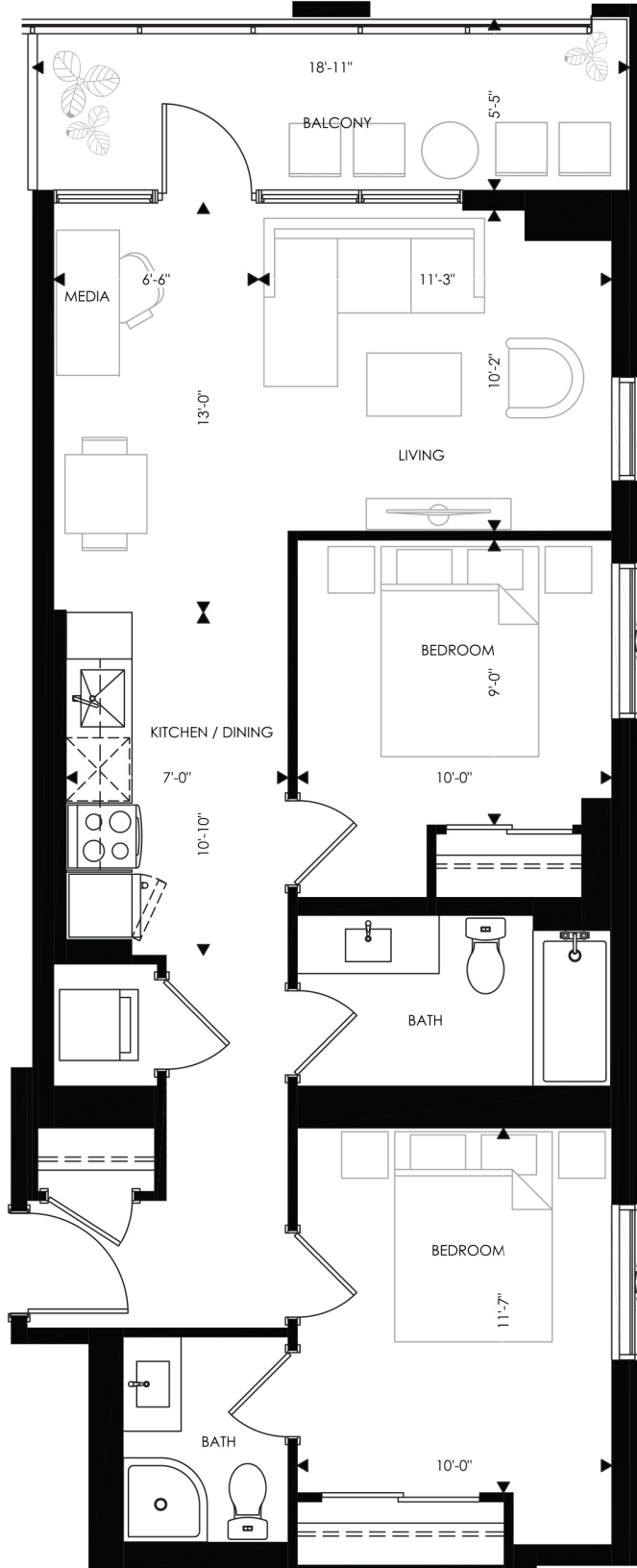
Two Bedroom (*barrier free*) | 965 sq.ft.  
Interior size: 866 sq.ft., Balcony size: 99 sq.ft.  
Available on floors: 22 – 32



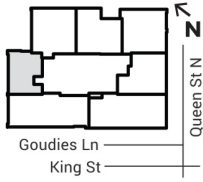


# Suite 2F

Two Bedroom | 943 sq.ft.  
Interior size: 841 sq.ft., Balcony size: 102 sq.ft.  
Available on floors: 22 – 32



All floor plans, specifications and materials are subject to availability and subject to change without notice. The Vendor shall have the right to substitute products and materials, of no lesser quality, for those listed above or depicted in the plans and specifications. The Vendor shall not be obligated to notify the Purchaser if products and materials are substituted. Natural materials such as wood, marble, granite and stone will have variations in colour and pattern from samples.



# Suite 1P

One Bedroom | 584 sq.ft.  
 Interior size: 452 sq.ft., Balcony size: 132 sq.ft.  
 Available on floors: 22 – 32



**Q CONDOS**  
 ON QUEEN

