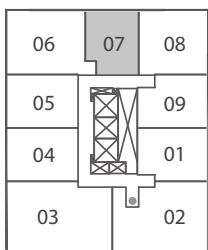
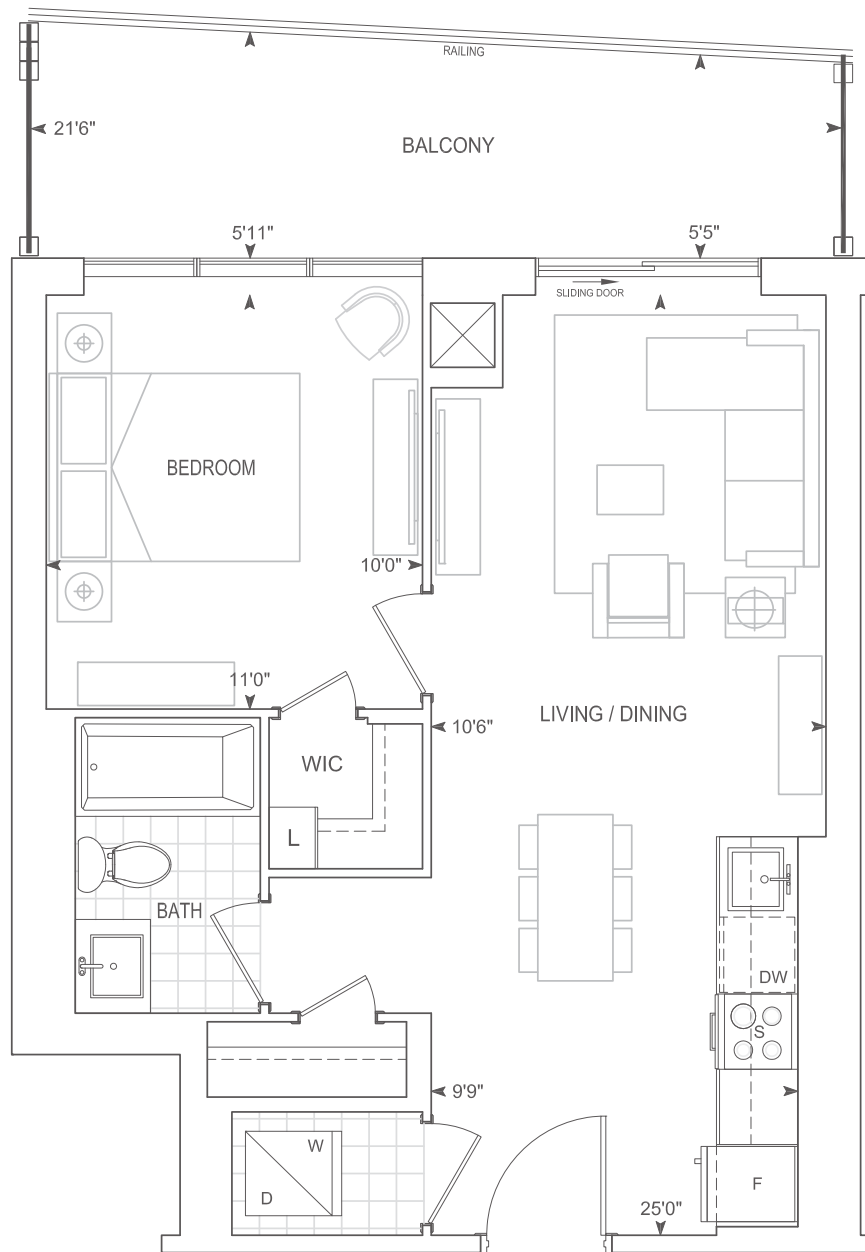


Exterior 120 sq.ft. Interior 555 sq.ft. Total 675 sq.ft.

A555 PH

1 BEDROOM



PENTHOUSE

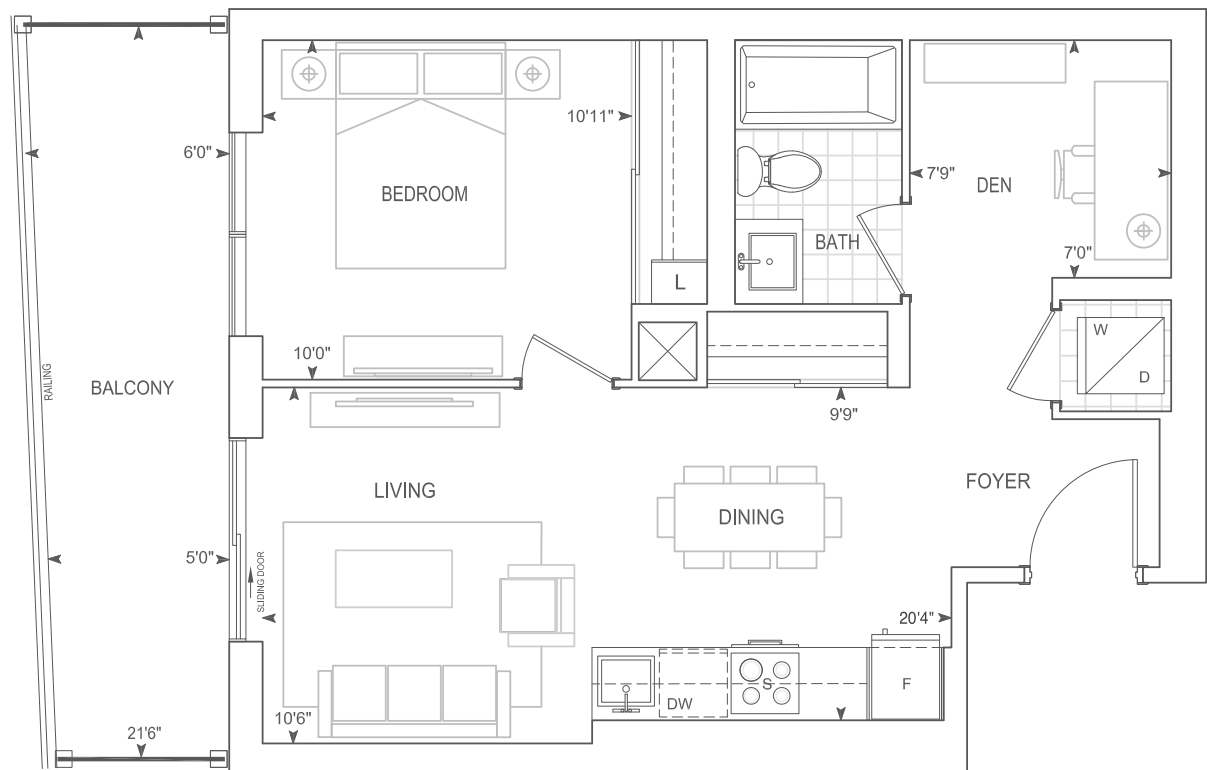
PENTHOUSE 10' CEILINGS

Dimensions, specifications, layouts, location of materials and fixtures, tile floor patterns and architectural detailing (including window size and location and door size, location and swing) are approximate only and are subject to change or modifications, without notice. Actual usable floor space varies from stated floor area. Orientation of suite may be reverse and Purchaser agrees to accept same. Balconies, terraces and patios are exclusive use common elements shown for display purposes only and location and size are subject to change without notice. All illustrations are artist concept only. The provisions of Schedule "X" of this Agreement, including Section 6 and 38 apply to this Schedule. E. & O.E. May 2023

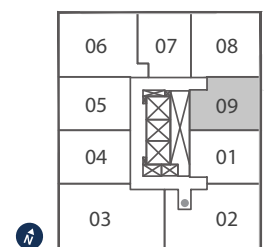
B595 PH

1 BEDROOM + DEN

Exterior 110 sq.ft. Interior 595 sq.ft. Total 705 sq.ft.



PENTHOUSE 10' CEILINGS



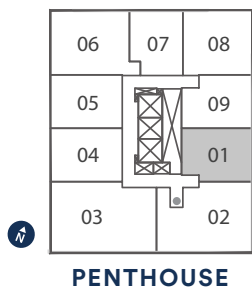
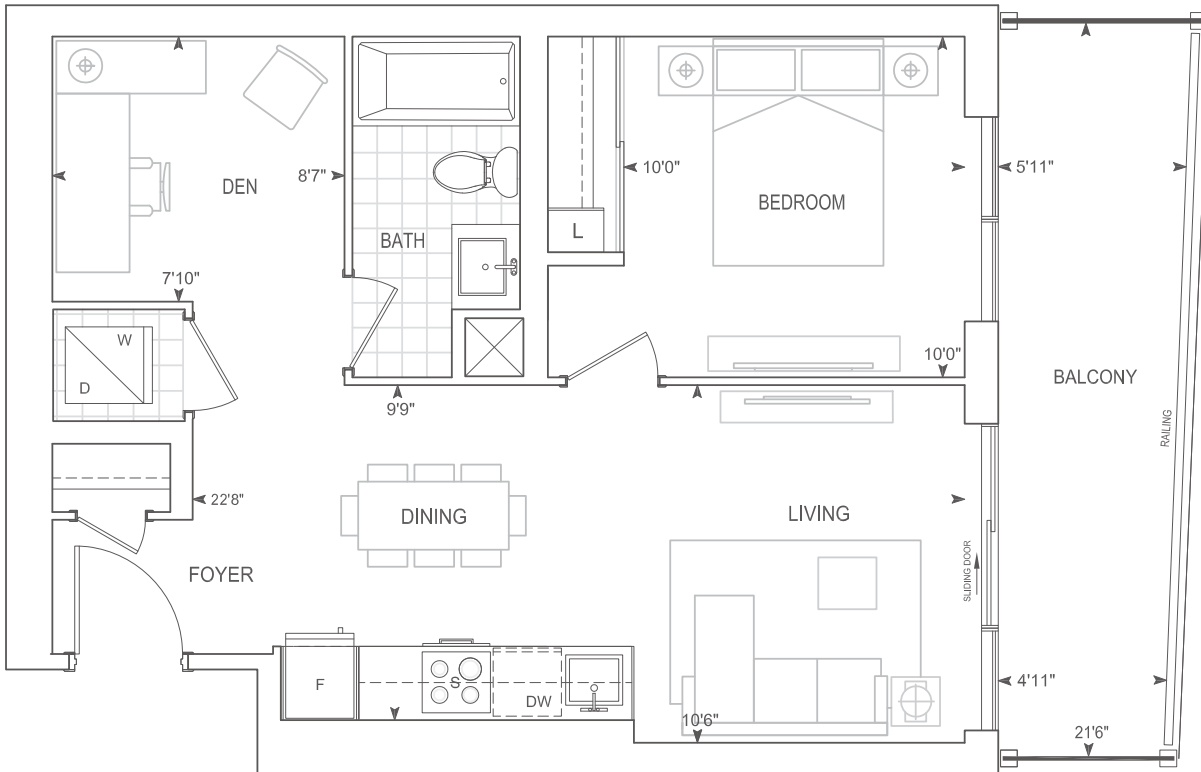
PENTHOUSE

Dimensions, specifications, layouts, location of materials and fixtures, tile floor patterns and architectural detailing (including window size and location and door size, location and swing) are approximate only and are subject to change or modifications, without notice. Actual usable floor space varies from stated floor area. Orientation of suite may be reverse and Purchaser agrees to accept same. Balconies, terraces and patios are exclusive use common elements shown for display purposes only and location and size are subject to change without notice. All illustrations are artist concept only. The provisions of Schedule "X" of this Agreement, including Section 6 and 38 apply to this Schedule. E. & O.E. May 2023

Exterior 130 sq.ft. Interior 614 sq.ft. Total 744 sq.ft.

B614 PH

1 BEDROOM + DEN



PENTHOUSE 10' CEILINGS

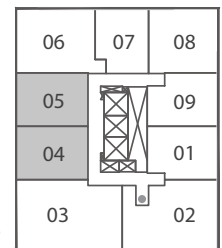
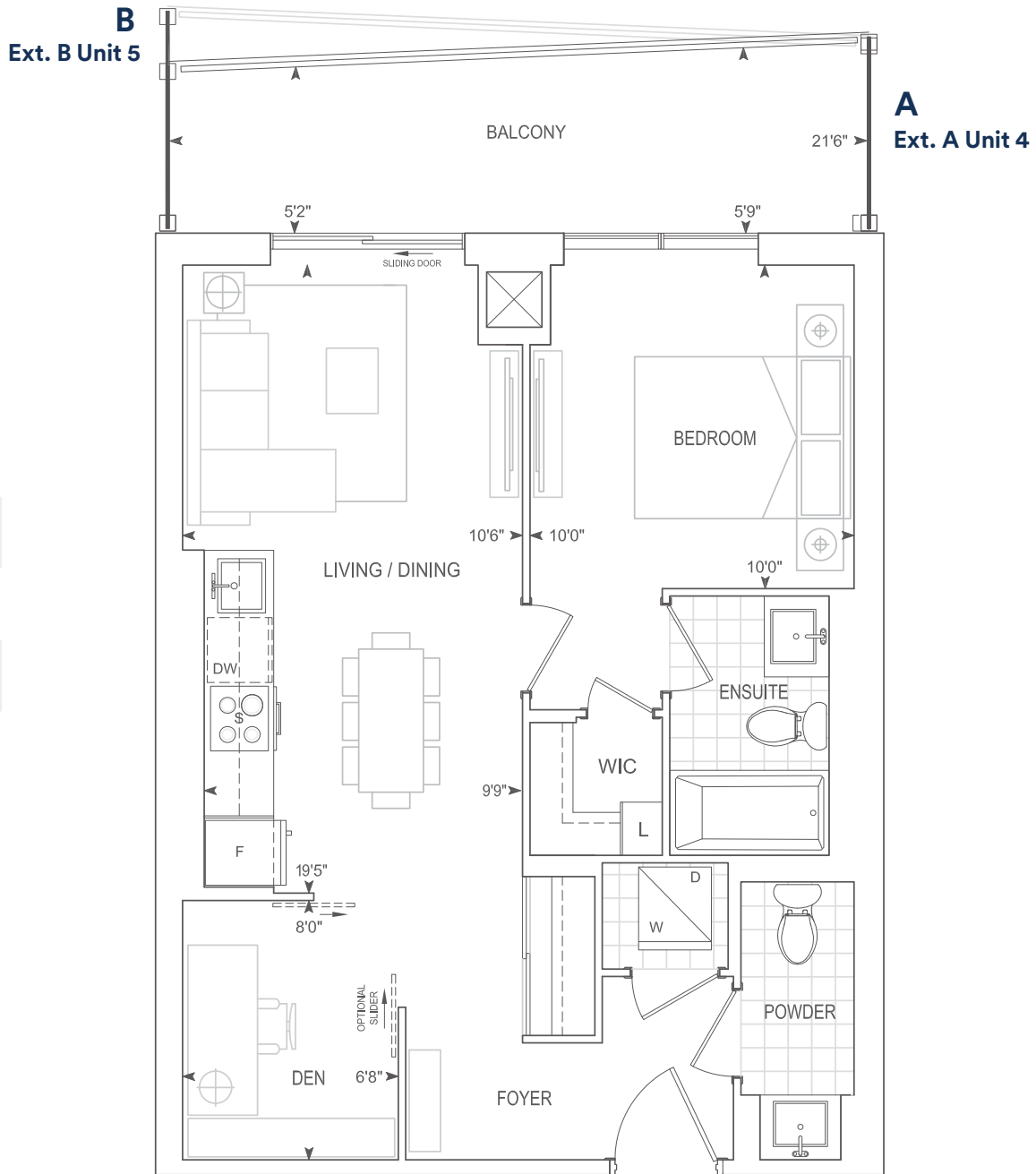
Dimensions, specifications, layouts, location of materials and fixtures, tile floor patterns and architectural detailing (including window size and location and door size, location and swing) are approximate only and are subject to change or modifications, without notice. Actual usable floor space varies from stated floor area. Orientation of suite may be reverse and Purchaser agrees to accept same. Balconies, terraces and patios are exclusive use common elements shown for display purposes only and location and size are subject to change without notice. All illustrations are artist concept only. The provisions of Schedule "X" of this Agreement, including Section 6 and 38 apply to this Schedule. E. & O.E. May 2023

B637 PH

1 BEDROOM + DEN

Exterior A 110 sq.ft. Interior 637 sq.ft. Total 747 sq.ft.

Exterior B 129 sq.ft. Interior 637 sq.ft. Total 766 sq.ft.



PENTHOUSE

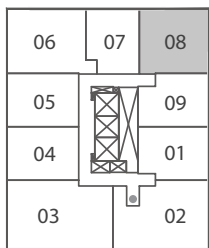
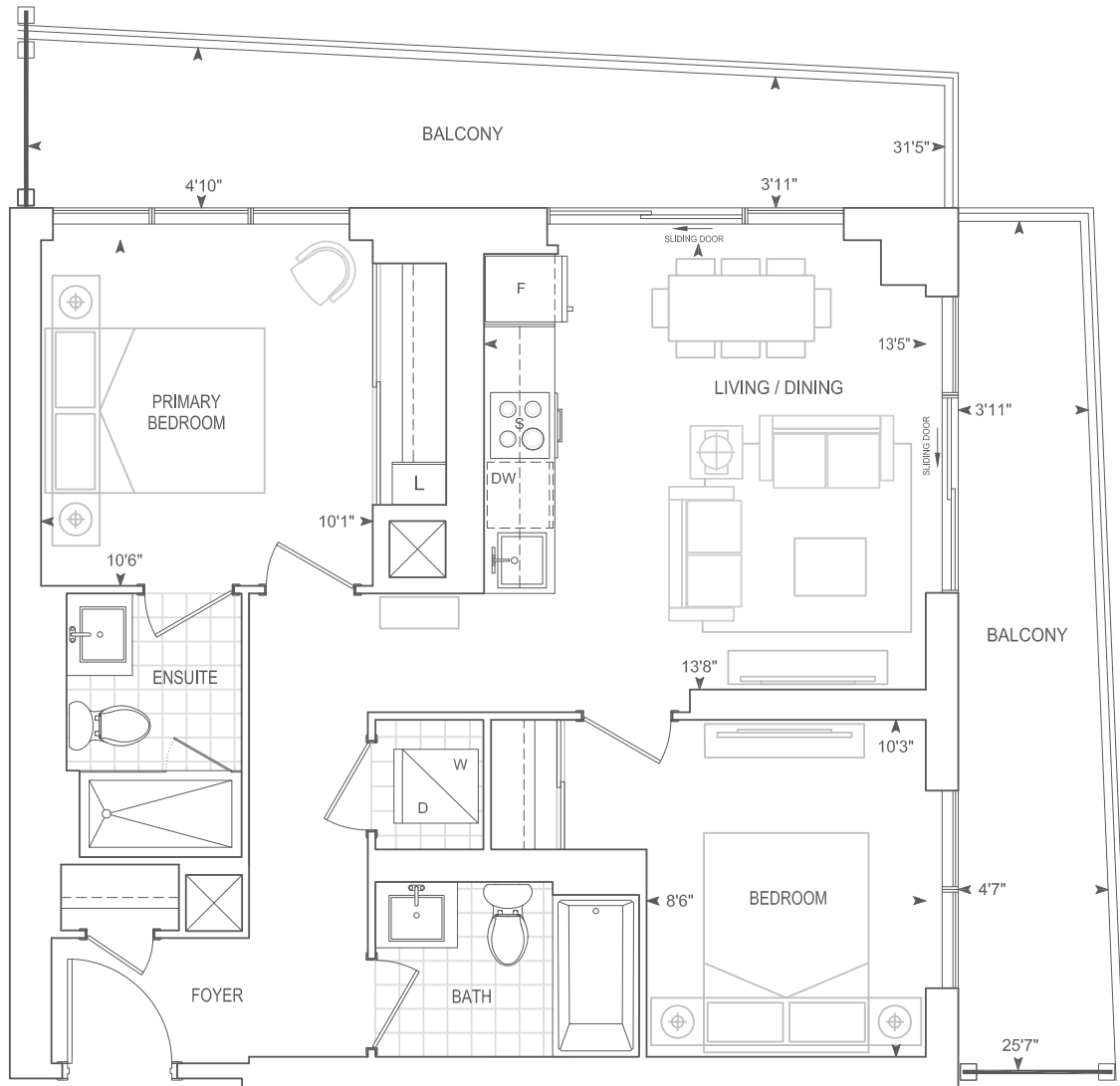
PENTHOUSE 10' CEILINGS

Dimensions, specifications, layouts, location of materials and fixtures, tile floor patterns and architectural detailing (including window size and location and door size, location and swing) are approximate only and are subject to change or modifications, without notice. Actual usable floor space varies from stated floor area. Orientation of suite may be reverse and Purchaser agrees to accept same. Balconies, terraces and patios are exclusive use common elements shown for display purposes only and location and size are subject to change without notice. All illustrations are artist concept only. The provisions of Schedule "X" of this Agreement, including Section 6 and 38 apply to this Schedule. E. & O.E. May 2023

Exterior 227 sq.ft. Interior 756 sq.ft. Total 983 sq.ft.

C756 PH

2 BEDROOM



PENTHOUSE

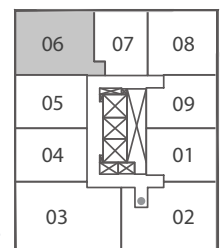
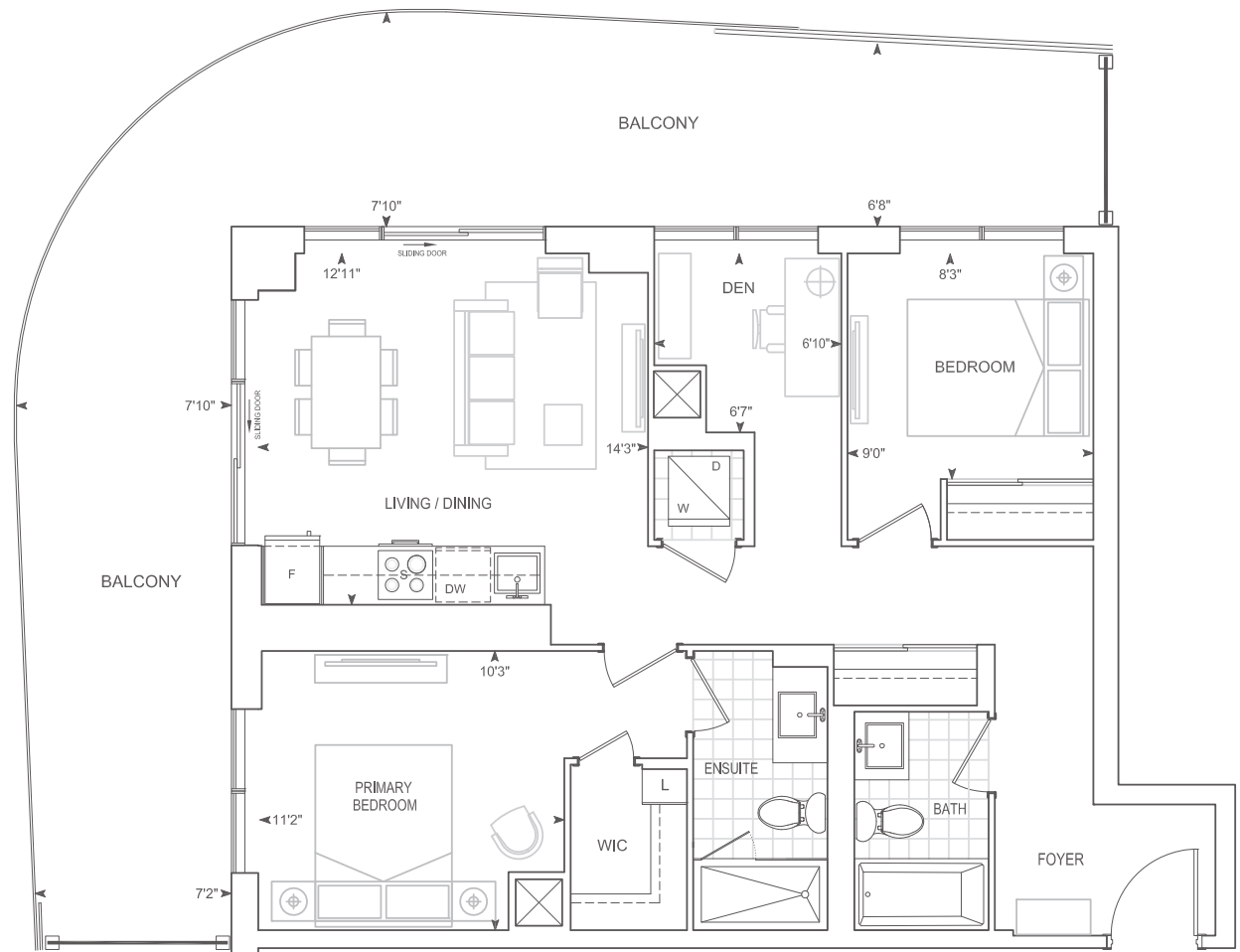
PENTHOUSE 10' CEILINGS

Dimensions, specifications, layouts, location of materials and fixtures, tile floor patterns and architectural detailing (including window size and location and door size, location and swing) are approximate only and are subject to change or modifications, without notice. Actual usable floor space varies from stated floor area. Orientation of suite may be reverse and Purchaser agrees to accept same. Balconies, terraces and patios are exclusive use common elements shown for display purposes only and location and size are subject to change without notice. All illustrations are artist concept only. The provisions of Schedule "X" of this Agreement, including Section 6 and 38 apply to this Schedule. E. & O.E. May 2023

D880 PH

Exterior 450 sq.ft. Interior 880 sq.ft. Total 1,330 sq.ft.

2 BEDROOM + DEN



PENTHOUSE

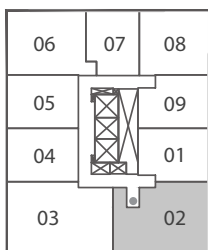
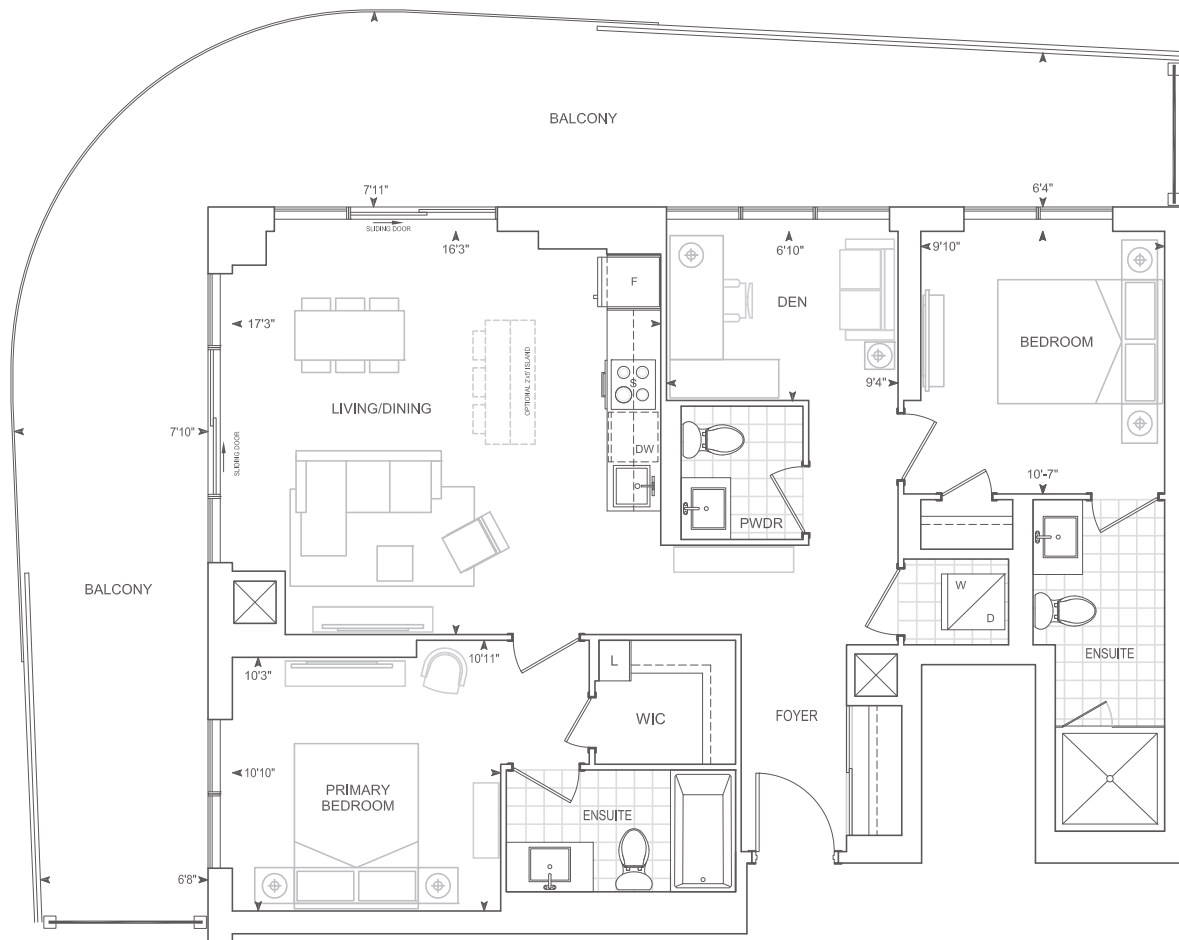
PENTHOUSE 10' CEILINGS

Dimensions, specifications, layouts, location of materials and fixtures, tile floor patterns and architectural detailing (including window size and location and door size, location and swing) are approximate only and are subject to change or modifications, without notice. Actual usable floor space varies from stated floor area. Orientation of suite may be reverse and Purchaser agrees to accept same. Balconies, terraces and patios are exclusive use common elements shown for display purposes only and location and size are subject to change without notice. All illustrations are artist concept only. The provisions of Schedule "X" of this Agreement, including Section 6 and 38 apply to this Schedule. E. & O.E. May 2023

Exterior 501 sq.ft. Interior 1,062 sq.ft. Total 1,563 sq.ft.

D1062 PH

2 BEDROOM + DEN



PENTHOUSE

PENTHOUSE 10' CEILINGS

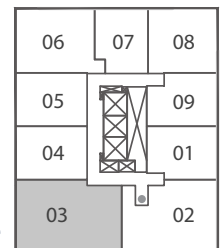
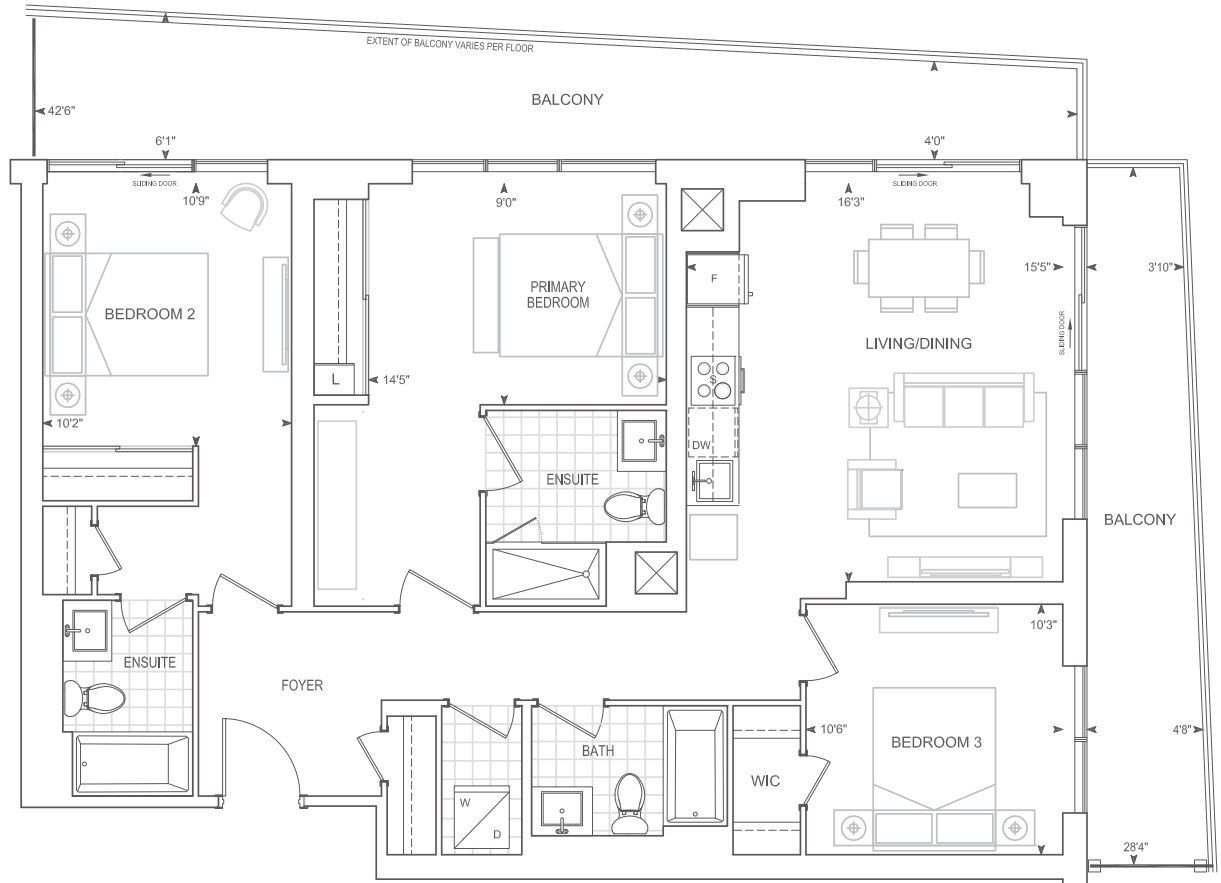
Dimensions, specifications, layouts, location of materials and fixtures, tile floor patterns and architectural detailing (including window size and location and door size, location and swing) are approximate only and are subject to change or modifications, without notice. Actual usable floor space varies from stated floor area. Orientation of suite may be reverse and Purchaser agrees to accept same. Balconies, terraces and patios are exclusive use common elements shown for display purposes only and location and size are subject to change without notice. All illustrations are artist concept only. The provisions of Schedule "X" of this Agreement, including Section 6 and 38 apply to this Schedule. E. & O.E. May 2023

E1227-BF PH

Exterior 321 sq.ft. Interior 1,227 sq.ft. Total 1,548 sq.ft.

3 BEDROOM

Barrier Free



PENTHOUSE

PENTHOUSE 10' CEILINGS

Dimensions, specifications, layouts, location of materials and fixtures, tile floor patterns and architectural detailing (including window size and location and door size, location and swing) are approximate only and are subject to change or modifications, without notice. Actual usable floor space varies from stated floor area. Orientation of suite may be reverse and Purchaser agrees to accept same. Balconies, terraces and patios are exclusive use common elements shown for display purposes only and location and size are subject to change without notice. All illustrations are artist concept only. The provisions of Schedule "X" of this Agreement, including Section 6 and 38 apply to this Schedule. E. & O.E. May 2023