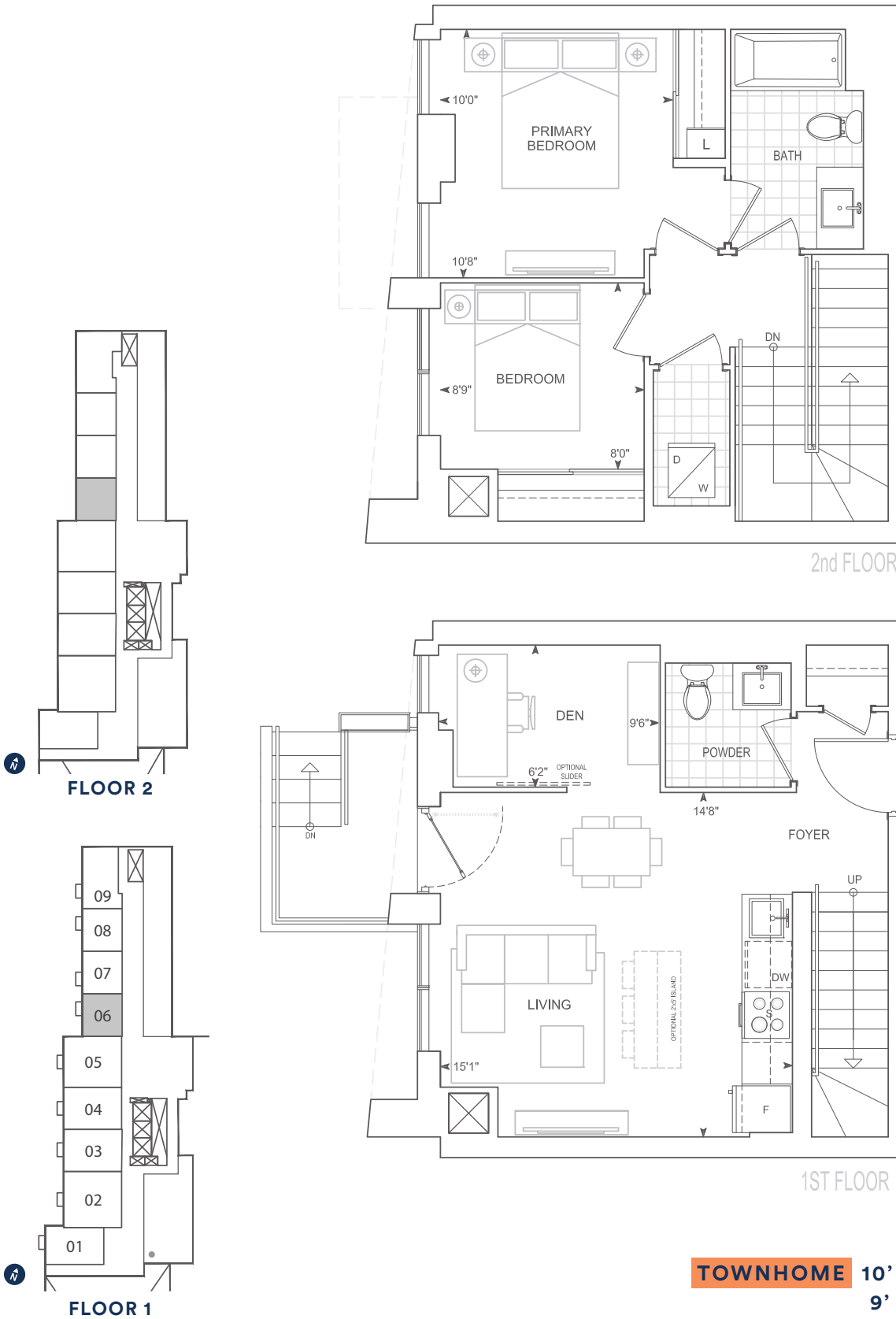


Exterior 23 sq.ft. Interior 919 sq.ft. Total 942 sq.ft.

TH919

2 BEDROOM + DEN



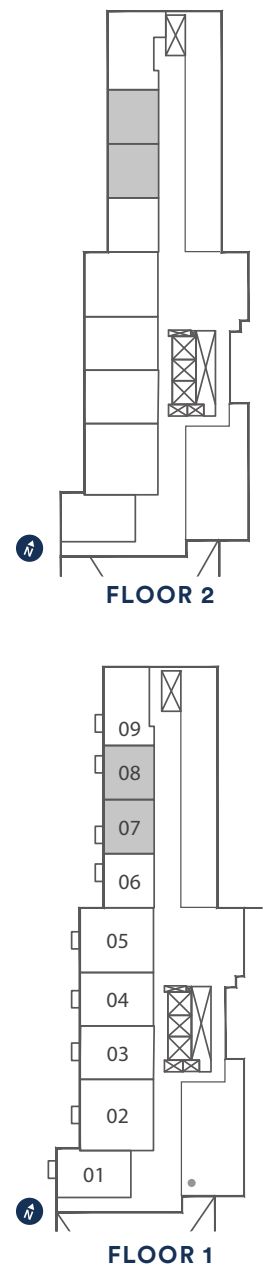
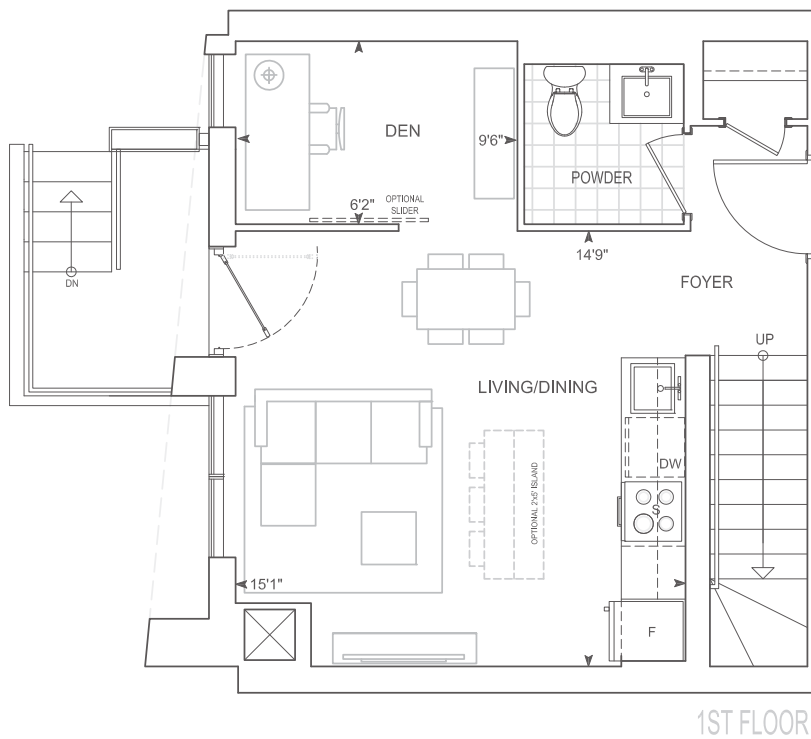
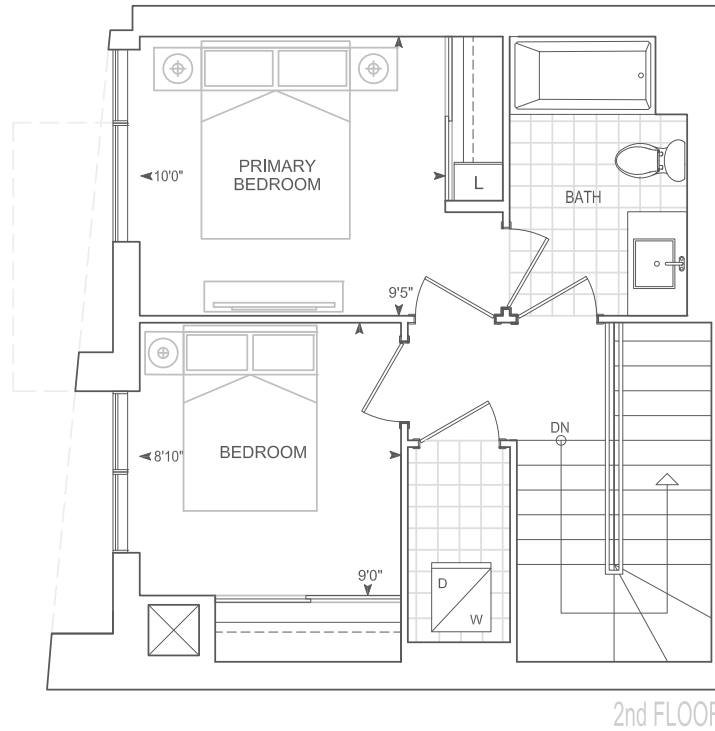
TOWNHOME 10' CEILINGS FLOOR 1
9' CEILINGS FLOOR 2

Dimensions, specifications, layouts, location of materials and fixtures, tile floor patterns and architectural detailing (including window size and location and door size, location and swing) are approximate only and are subject to change or modifications, without notice. Actual usable floor space varies from stated floor area. Orientation of suite may be reverse and Purchaser agrees to accept same. Balconies, terraces and patios are exclusive use common elements shown for display purposes only and location and size are subject to change without notice. All illustrations are artist concept only. The provisions of Schedule "X" of this Agreement, including Section 6 and 38 apply to this Schedule. E. & O.E. May 2023

TH920

2 BEDROOM + DEN

Exterior 23 sq.ft. Interior 920 sq.ft. Total 943 sq.ft.



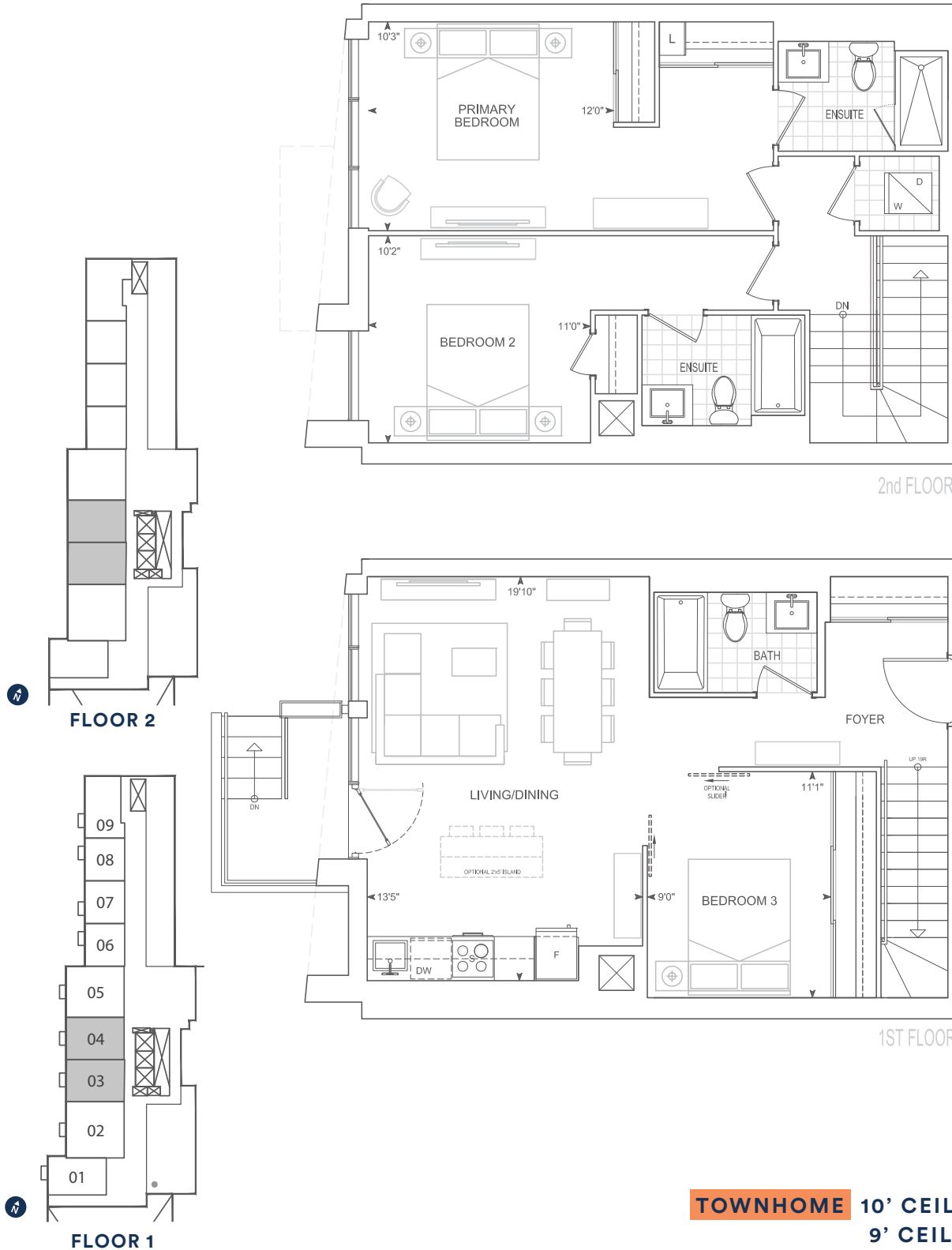
TOWNHOME 10' CEILINGS FLOOR 1
9' CEILINGS FLOOR 2

Dimensions, specifications, layouts, location of materials and fixtures, tile floor patterns and architectural detailing (including window size and location and door size, location and swing) are approximate only and are subject to change or modifications, without notice. Actual usable floor space varies from stated floor area. Orientation of suite may be reverse and Purchaser agrees to accept same. Balconies, terraces and patios are exclusive use common elements shown for display purposes only and location and size are subject to change without notice. All illustrations are artist concept only. The provisions of Schedule "X" of this Agreement, including Section 6 and 38 apply to this Schedule. E. & O.E. May 2023

Exterior 23 sq.ft. Interior 1,299 sq.ft. Total 1,322 sq.ft.

TH1299

3 BEDROOM

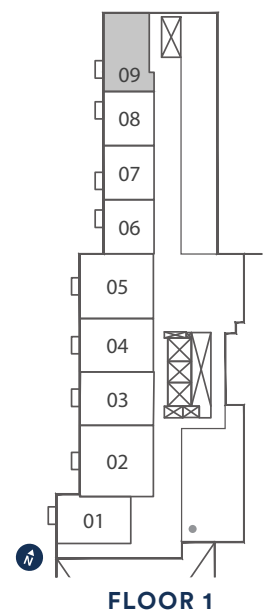
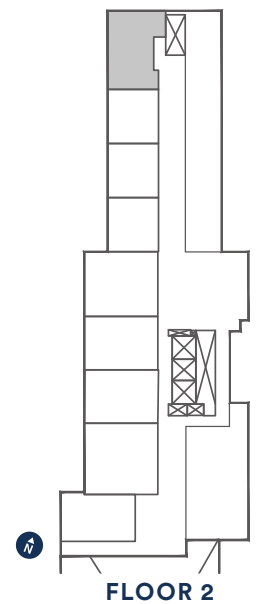
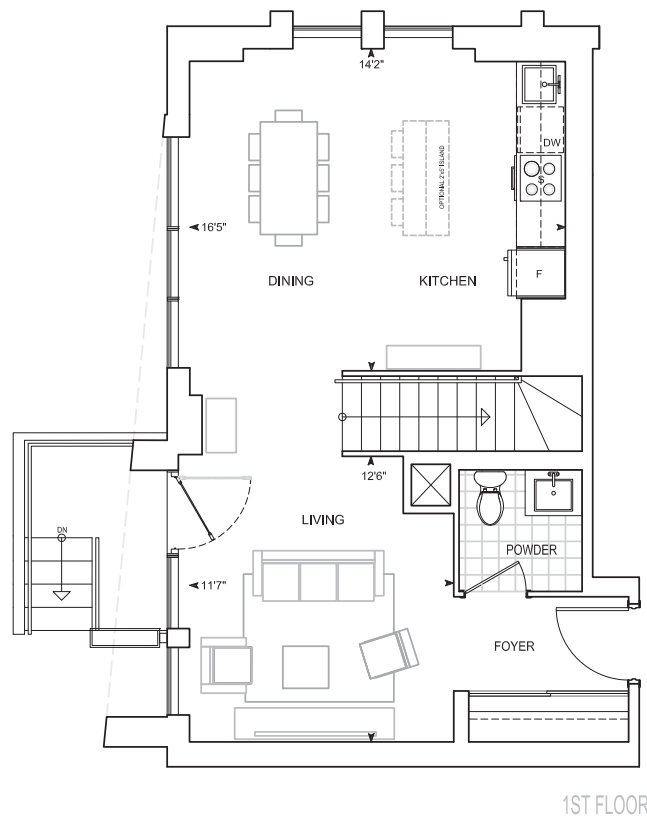
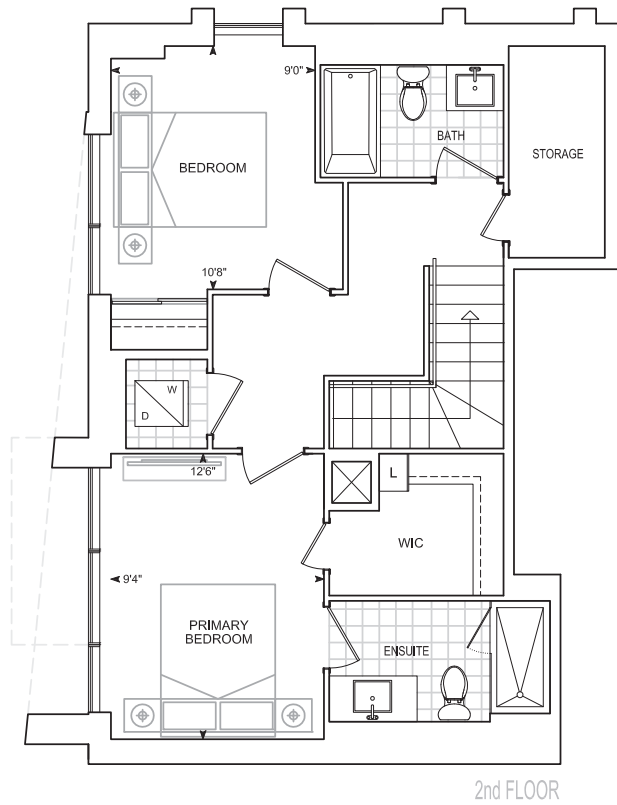


Dimensions, specifications, layouts, location of materials and fixtures, tile floor patterns and architectural detailing (including window size and location and door size, location and swing) are approximate only and are subject to change or modifications, without notice. Actual usable floor space varies from stated floor area. Orientation of suite may be reverse and Purchaser agrees to accept same. Balconies, terraces and patios are exclusive use common elements shown for display purposes only and location and size are subject to change without notice. All illustrations are artist concept only. The provisions of Schedule "X" of this Agreement, including Section 6 and 38 apply to this Schedule. E. & O.E. May 2023

TH1315

2 BEDROOM

Exterior 23 sq.ft. Interior 1,315 sq.ft. Total 1,338 sq.ft.



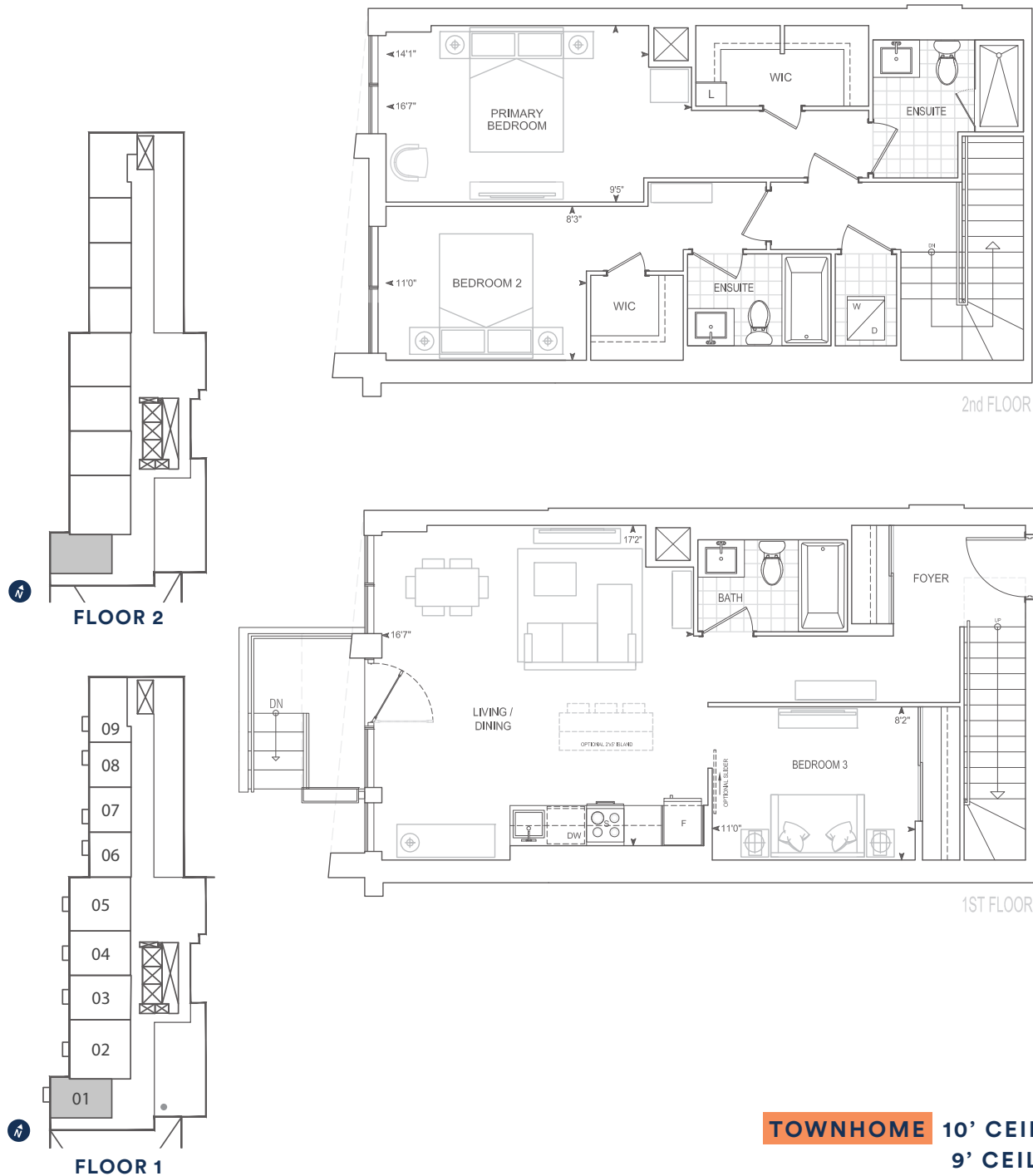
TOWNHOME 10' CEILINGS FLOOR 1
9' CEILINGS FLOOR 2

Dimensions, specifications, layouts, location of materials and fixtures, tile floor patterns and architectural detailing (including window size and location and door size, location and swing) are approximate only and are subject to change or modifications, without notice. Actual usable floor space varies from stated floor area. Orientation of suite may be reverse and Purchaser agrees to accept same. Balconies, terraces and patios are exclusive use common elements shown for display purposes only and location and size are subject to change without notice. All illustrations are artist concept only. The provisions of Schedule "X" of this Agreement, including Section 6 and 38 apply to this Schedule. E. & O.E. May 2023

Exterior 23 sq.ft. Interior 1,405 sq.ft. Total 1,428 sq.ft.

TH1405

3 BEDROOM



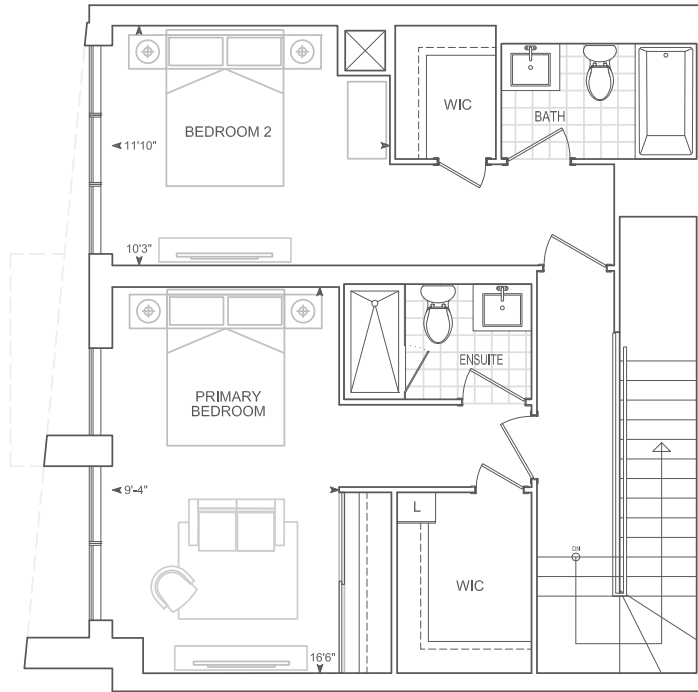
TOWNHOME 10' CEILINGS FLOOR 1
9' CEILINGS FLOOR 2

Dimensions, specifications, layouts, location of materials and fixtures, tile floor patterns and architectural detailing (including window size and location and door size, location and swing) are approximate only and are subject to change or modifications, without notice. Actual usable floor space varies from stated floor area. Orientation of suite may be reverse and Purchaser agrees to accept same. Balconies, terraces and patios are exclusive use common elements shown for display purposes only and location and size are subject to change without notice. All illustrations are artist concept only. The provisions of Schedule "X" of this Agreement, including Section 6 and 38 apply to this Schedule. E. & O.E. May 2023

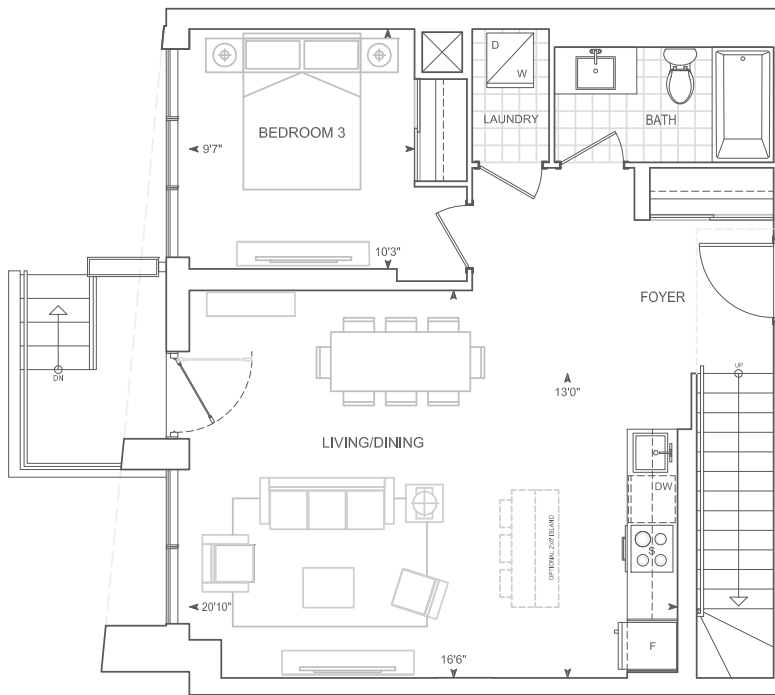
TH1531

3 BEDROOM

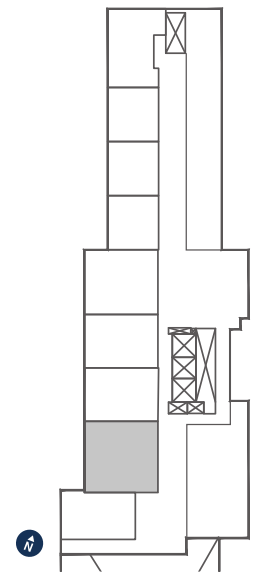
Exterior 23 sq.ft. Interior 1,531 sq.ft. Total 1,554 sq.ft.



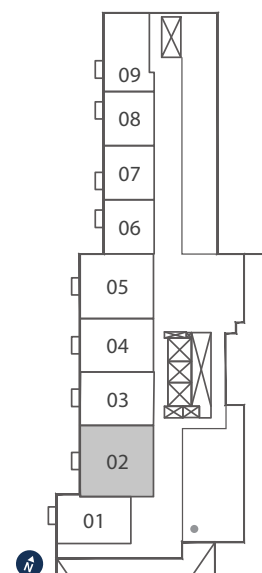
2nd FLOOR



1st FLOOR



FLOOR 2



FLOOR 1

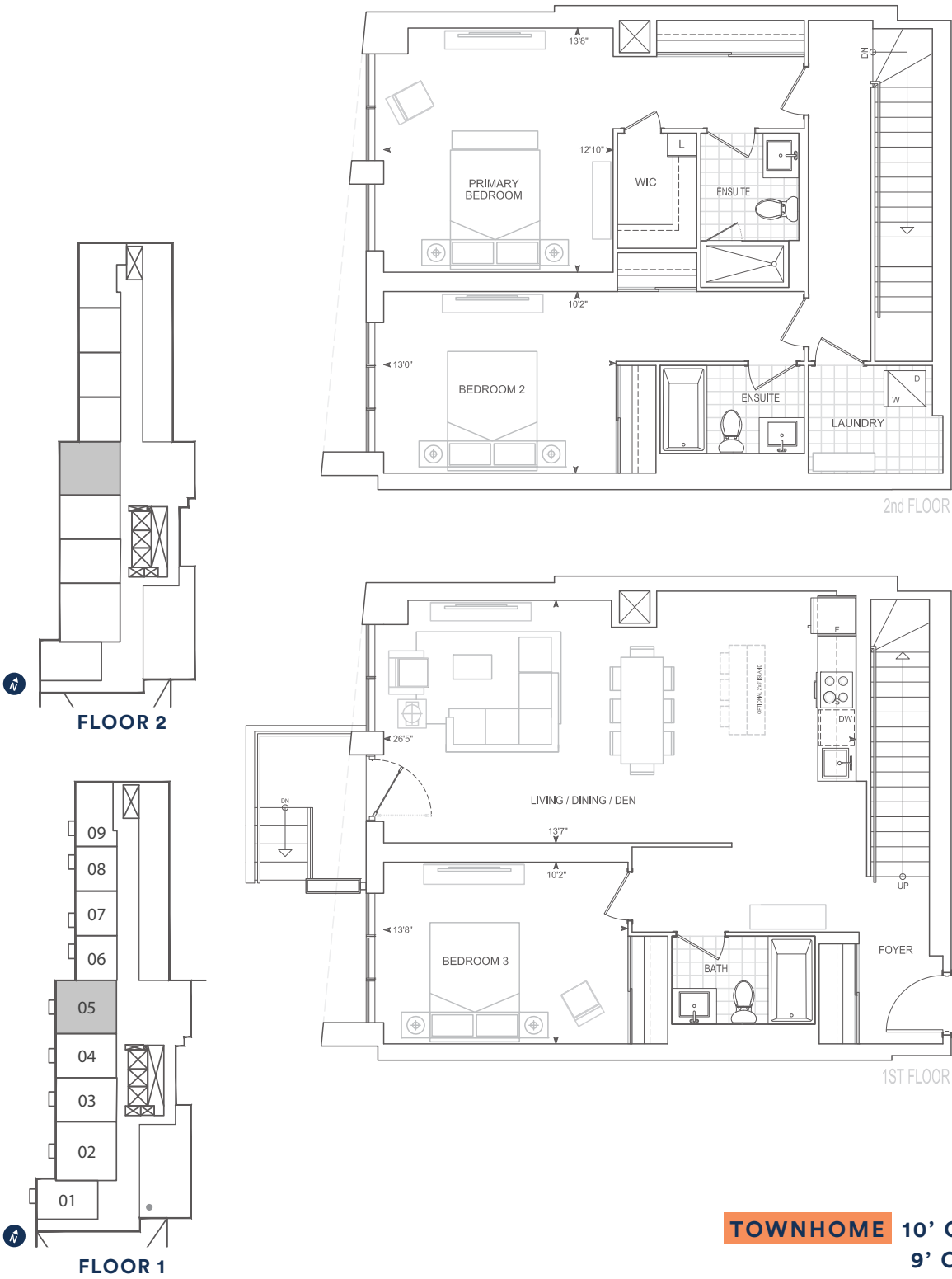
TOWNHOME 10' CEILINGS FLOOR 1
9' CEILINGS FLOOR 2

Dimensions, specifications, layouts, location of materials and fixtures, tile floor patterns and architectural detailing (including window size and location and door size, location and swing) are approximate only and are subject to change or modifications, without notice. Actual usable floor space varies from stated floor area. Orientation of suite may be reverse and Purchaser agrees to accept same. Balconies, terraces and patios are exclusive use common elements shown for display purposes only and location and size are subject to change without notice. All illustrations are artist concept only. The provisions of Schedule "X" of this Agreement, including Section 6 and 38 apply to this Schedule. E. & O.E. May 2023

Exterior 23 sq.ft. Interior 1,733 sq.ft. Total 1,756 sq.ft.

TH1733

3 BEDROOM



Dimensions, specifications, layouts, location of materials and fixtures, tile floor patterns and architectural detailing (including window size and location and door size, location and swing) are approximate only and are subject to change or modifications, without notice. Actual usable floor space varies from stated floor area. Orientation of suite may be reverse and Purchaser agrees to accept same. Balconies, terraces and patios are exclusive use common elements shown for display purposes only and location and size are subject to change without notice. All illustrations are artist concept only. The provisions of Schedule "X" of this Agreement, including Section 6 and 38 apply to this Schedule. E. & O.E. May 2023