

# Spring

**TOWER 1**



**THOMPSON**  
TOWERS



THOMPSON  
TOWERS

# Milton Reimagined



\*artist's impression



Thompson Towers is  
an urban community  
coming to the heart  
of **MILTON**.

Located off Thompson Road South and Drew Centre, the first tower in this new community will be connected to a world-class transit network, complete with a full range of unique modern amenities at the Thompson Club. With striking architectural features and well-designed grounds, Spring at Thompson Towers is Milton's newest landmark. The whole city is on your doorstep.



# You Have Arrived At Your Destination

Every detail at Thompson Towers has been thoughtfully planned to enhance your lifestyle. It all starts at the central entrance to the community, the porte-cochère, which merges elegant form and seamless function to create a memorable welcome for residents and guests.



\*artist's impression



# The Promenade

On the west side of Thompson Towers, you'll find exclusive townhomes that are situated on a new pedestrian thoroughfare. This beautiful promenade is just one of many features designed to promote a vibrant and engaged community lifestyle for residents.

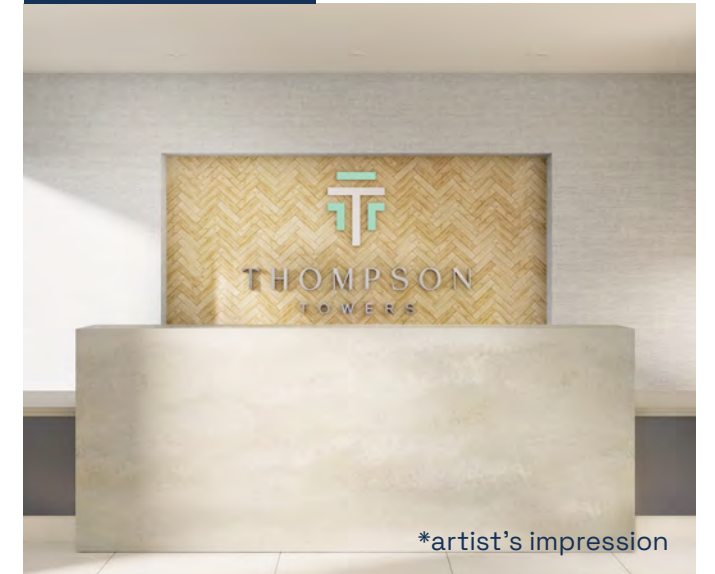




\*artist's impression



## CONCIERGE



\*artist's impression

# The Lobby

Step into Spring's lobby and you'll find that it's exquisitely designed to capture the modern character of the community: tasteful finishes, bright natural lighting, and stunning material selection. Between the contemporary seating areas, elegant marble and rustic wood design features, and conveniences like the discreet pet wash station, this space offers a refreshing new take on urban living.

The personal touch of a concierge completes the grand entrance at Spring. Whether warmly greeting you or your guests or accepting and storing parcels on your behalf when you're away, you will always feel welcome from the moment you arrive.



Welcome to the Thompson Club, a unique, state-of-the-art indoor and outdoor amenity space.

The Thompson Club features a pool, a walking track, gardens, sports courts, a dog run, a children's play area, as well as patios, gazebos, and picnic areas. Indoors, you'll find fireside lounges, areas to host a dinner party, modern fitness facilities, a yoga studio, and so much more.

# THOMPSON CLUB



# THOMPSON CLUB

## Spring Tower

### INTERIOR AMENITIES

- 1 Fitness Centre
- 2 Private Dining & Lounge
- 3 Private Dining
- 4 Party Room
- 5 Pool Lounge



\*Illustration is artist's impression. All dimensions are approximate. Specifications, terms and conditions are subject to change without notice. E. & O.E. May 2023



### EXTERIOR AMENITIES

- 6 Outdoor Pool
- 7 BBQ Lounge
- 8 Splash Pad
- 9 Walking Track
- 10 Dog Run
- 11 Outdoor Yoga Area
- 12 Multi-Purpose Sports Courts

\*Illustration is artist's impression. All dimensions are approximate. Specifications, terms and conditions are subject to change without notice. E. & O.E. May 2023



# YOUR VERY OWN POOLSIDE OASIS

The poolside oasis is complemented by an indoor pool lounge located just off the outdoor amenities space. Offering breathtaking views, a wet bar, and plenty of dining areas, this space is the ideal setting to kick back with family and friends or just cool off from the sunny splendour of the outdoor amenities.

There is nothing better than a cool dip on a hot summer's day at the Thompson Club. Surrounded by generous sitting and dining areas, loungers, and private gazebos, this rooftop pool offers an elevated al fresco experience that is sure to impress. But the pool is not the only water feature at the Thompson Club. There is also a child-friendly splash pad that is sure to keep even the youngest entertained for hours.

## OUTDOOR POOL



## POOL LOUNGE

\*artist's impression

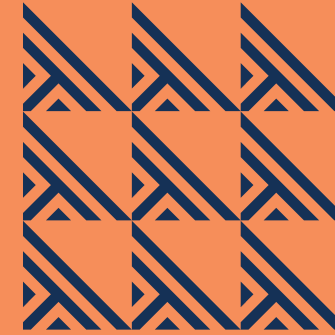
\*artist's impression

\*artist's impression



BBQ LOUNGE

Whether you're gathering with family to grill up a meal, dining with friends to celebrate a special occasion, or you're simply in the mood for a fireside chat, the Thompson Club offers an unforgettable backdrop.



Sun or shade, day or night, this space has been designed to create exactly the kind of ambiance you're looking for. A more relaxed intimate setting or a high-energy social atmosphere, the Thompson Club is the place to be. It's also the perfect place to watch the sunrise or catch a sunset.

Stretch your legs, hit the track or sports courts, or enjoy the well-manicured garden and grounds.



\*artist's impression

# THE GREAT OUTDOORS

# THE GREATER INDOORS

The Thompson Club is the ideal setting to mark the special moments in life. An intimate gathering of friends or a party with the extended family, there is a finely crafted space just for you. Private dining suites are fully equipped with wet bars and kitchens giving you all the tools to be the perfect host.



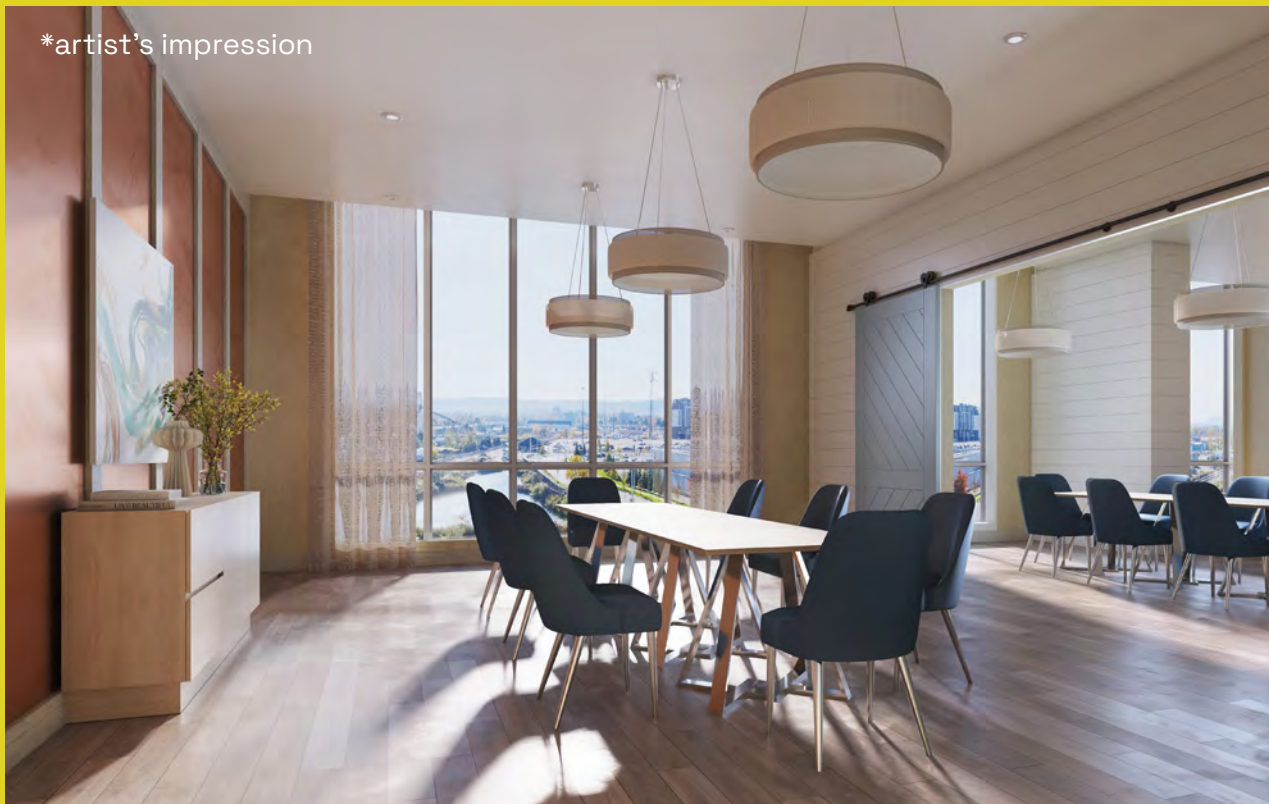
\*artist's impression

**PARTY ROOM**



The party room at the Thompson Club is a large and versatile gathering space, stylishly furnished with loungers, tables, and a fireplace. If you're looking for the best spot for your next big event, look no further.

\*artist's impression



**PRIVATE DINING**

# GET YOUR REPS IN

Living an active lifestyle is easy at Thompson Towers. The fully equipped fitness facility and yoga studio has everything you need to support a balanced wellness routine.



\*artist's impression

FITNESS CENTRE



**WORK SPACE**



# WORK AND PLAY

Spring, tower one, has private and open work space available to you, including boardrooms and breakout meeting rooms. If you're working from home, it doesn't always have to be in your suite.

At the Thompson Club, you have access to a three-tiered theatre where you can host a private screening of your favourite movie, show, or sporting event. Then you can head over to the games room which features classic arcade games, billiards, and other table games. If your guests decide to stay over but want their own space, they will have access to two guest suites.

**GAMES ROOM**



**THEATRE ROOM**



# The Area



## shops & restaurants

- Walmart
- Canadian Tire
- Indigo
- Sport Chek
- Longo's
- Home Depot
- PetSmart
- The Beer Store
- Best Buy
- The Brick
- Turtle Jack's
- The Tarka House
- Quik Chik
- Tim Hortons
- McDonald's
- A&W
- Real Canadian Superstore
- Mucho Burrito
- Dollarama
- Baskin Robbins
- Starbucks
- LCBO
- TD Canada Trust
- Scotiabank
- Shoeless Joe's
- Milton Common Mall
- Hero Certified Burgers
- Shoppers Drug Mart
- Swiss Chalet
- KFC
- barBURRITO
- Metro

## parks & recreation

- Sprucedale Park
- Woodward Woodlot
- Kinsmen Park
- Wallbrook Park
- Menefy Park
- Beaty Trail Park
- Livingston Trail
- Bristol District Park
- Savoline Park
- Sherwood Park
- Trudeau Park
- Field Park
- Laurier Park
- Benjamin Chee Chee Park
- Walker Park
- Optimist Park
- Gastle Park
- McCready Park
- Cricket Park
- Maquire Park

## education

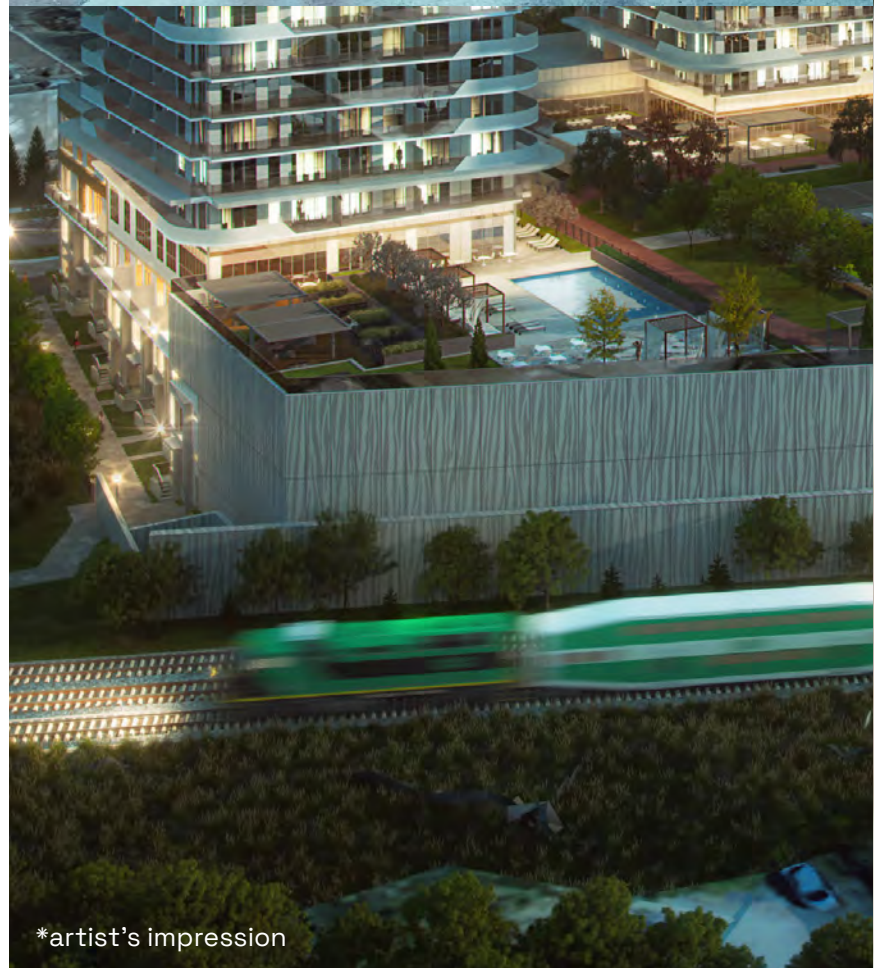
- Milton District High School
- E.W. Foster Public School
- St. Peter Catholic Elementary School
- W.I.D. Middle School
- Chris Hadfield Public School
- Tarbiyah Elementary School
- Oakville Trafalgar Memorial Hospital

\*Map not to scale.

## Transit

At Thompson Towers, the Milton GO station is less than a two-minute walk from your front door. It offers regular GO train service into downtown Toronto, and is a local transit hub where you can catch reliable bus service throughout Milton and the surrounding area.

If you choose to drive, there are plenty of convenient options nearby.



# GET WHERE

# YOU'RE GOING



# WINE,

# DINE, UNWIND



## Entertainment

Thompson Towers is a community that elevates everyday living. There is a huge variety of shopping, dining, and entertainment available at your doorstep: superstores, malls, restaurants, parks, and the arts centre.





## Recreation

Lion's Sports Park is one of the top recreational locations in the city, with its ball diamonds, fields, arenas, and skate park. It also happens to be right across the street from Thompson Towers.

Being located on the Niagara Escarpment, the nearby area is also home to gorgeous conservation areas, golf courses, ski slopes, and trails. Play 18 at Royal Ontario, Piper's Heath, Crosswinds, or a number of other courses. Hike the trails at Crawford Lake. Take in the views at Rattlesnake Point. Venture onto the slopes of Kelso Conservation Area.

The sheer abundance of natural beauty in this area will turn each day into an adventure.

**ON THE ESCARPMENT**





# Tower Suites

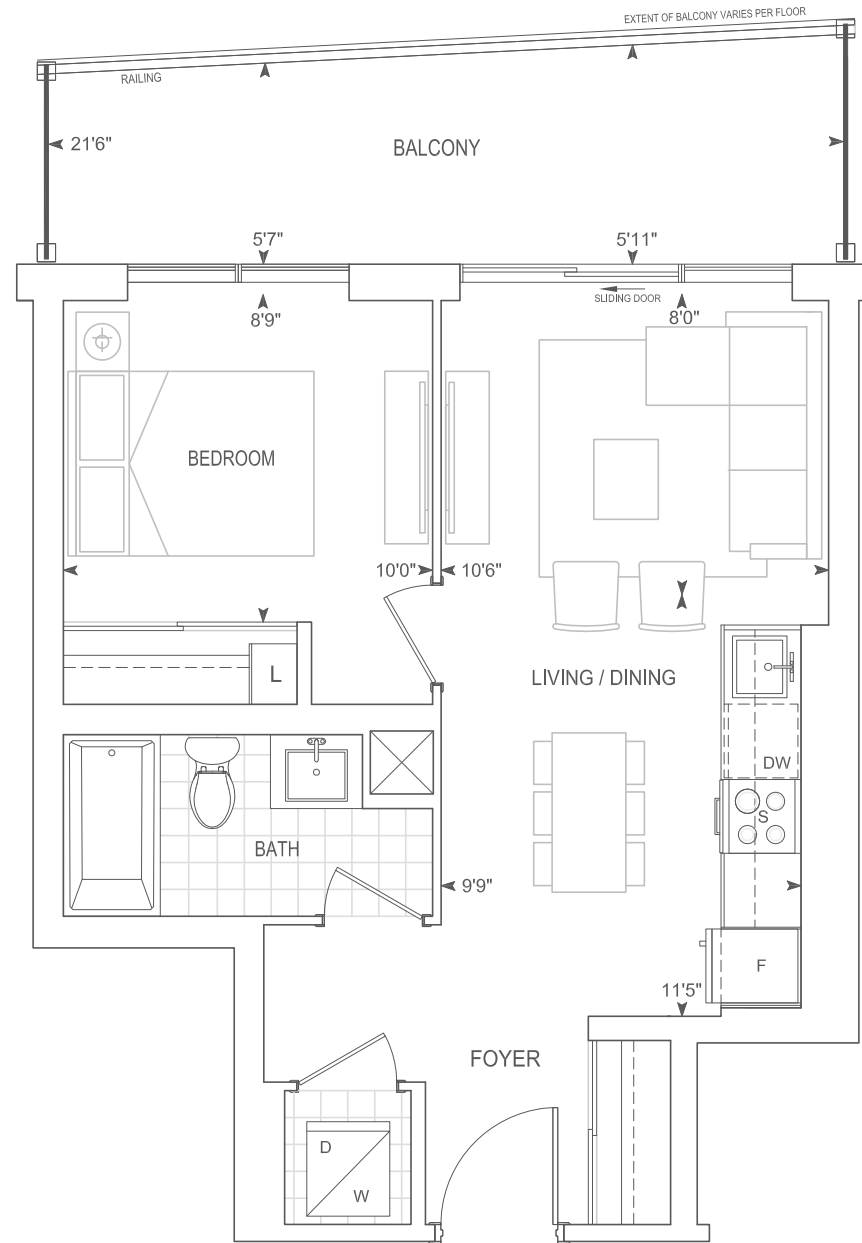


\*artist's impression

# A514

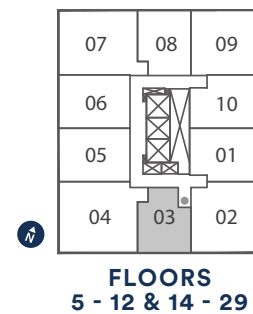
## 1 BEDROOM

Exterior 121 sq.ft. Interior 514 sq.ft. Total 635 sq.ft.



9' CEILINGS  
FLOORS 5 - 10, 12, 14 - 21, 23 - 29

THOMPSON SERIES 10' CEILINGS  
FLOORS 11, 22



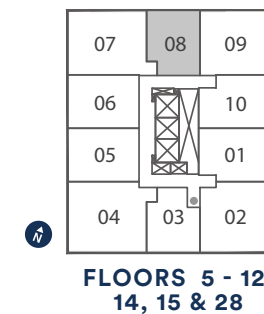
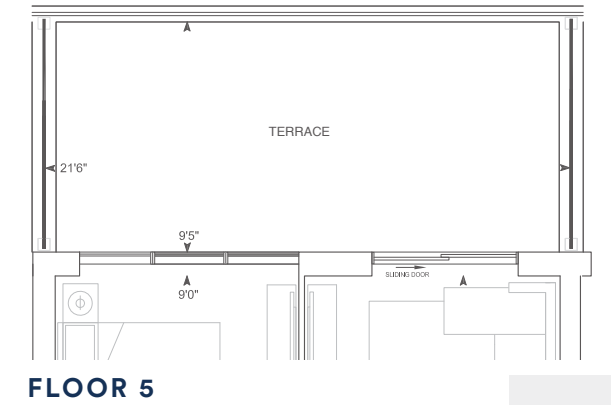
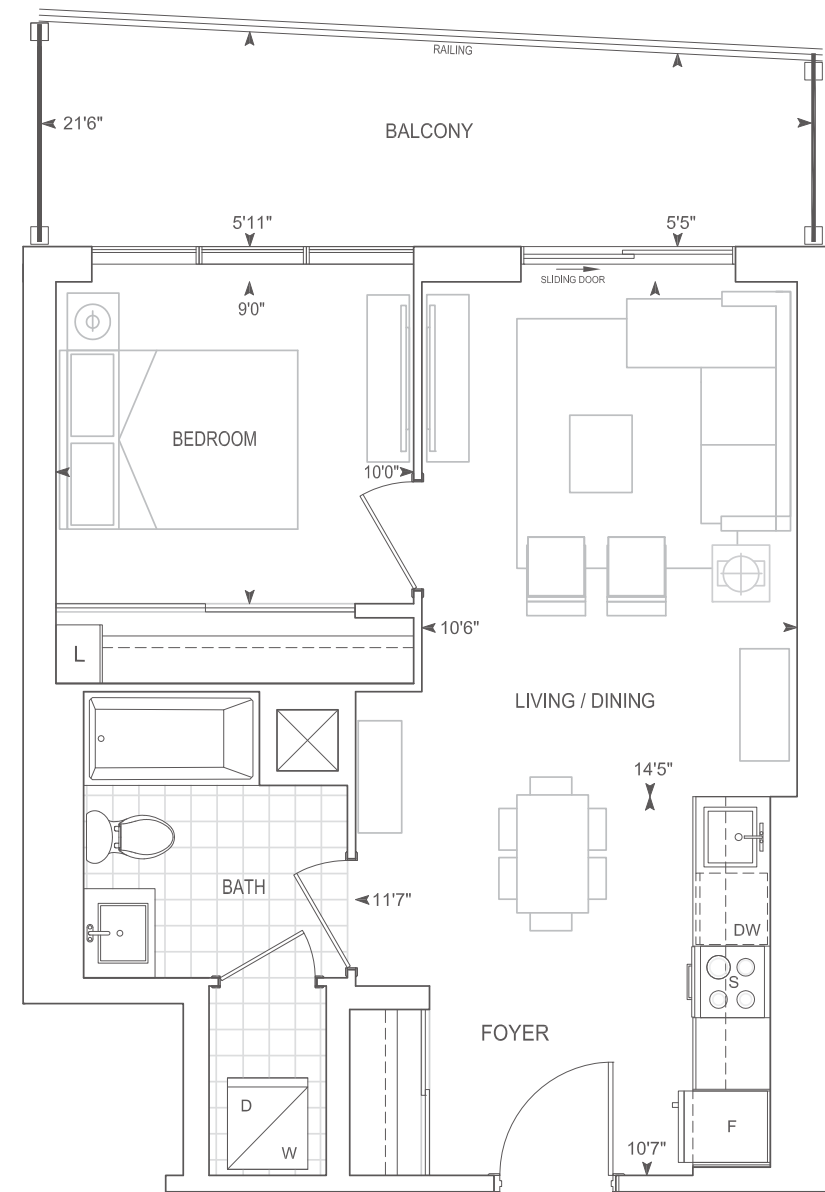
Dimensions, specifications, layouts, location of materials and fixtures, tile floor patterns and architectural detailing (including window size and location and door size, location and swing) are approximate only and are subject to change or modifications, without notice. Actual usable floor space varies from stated floor area. Orientation of suite may be reverse and Purchaser agrees to accept same. Balconies, terraces and patios are exclusive use common elements shown for display purposes only and location and size are subject to change without notice. All illustrations are artist concept only. The provisions of Schedule "X" of this Agreement, including Section 6 and 38 apply to this Schedule. E. & O.E. May 2023

Exterior 120 sq.ft. Interior 555 sq.ft. Total 675 sq.ft.  
Terrace 207 sq.ft. Interior 555 sq.ft. Total 762 sq.ft.

# A555-BF

## 1 BEDROOM

Barrier Free



9' CEILINGS  
FLOORS 5 - 10, 12, 14-15, 28

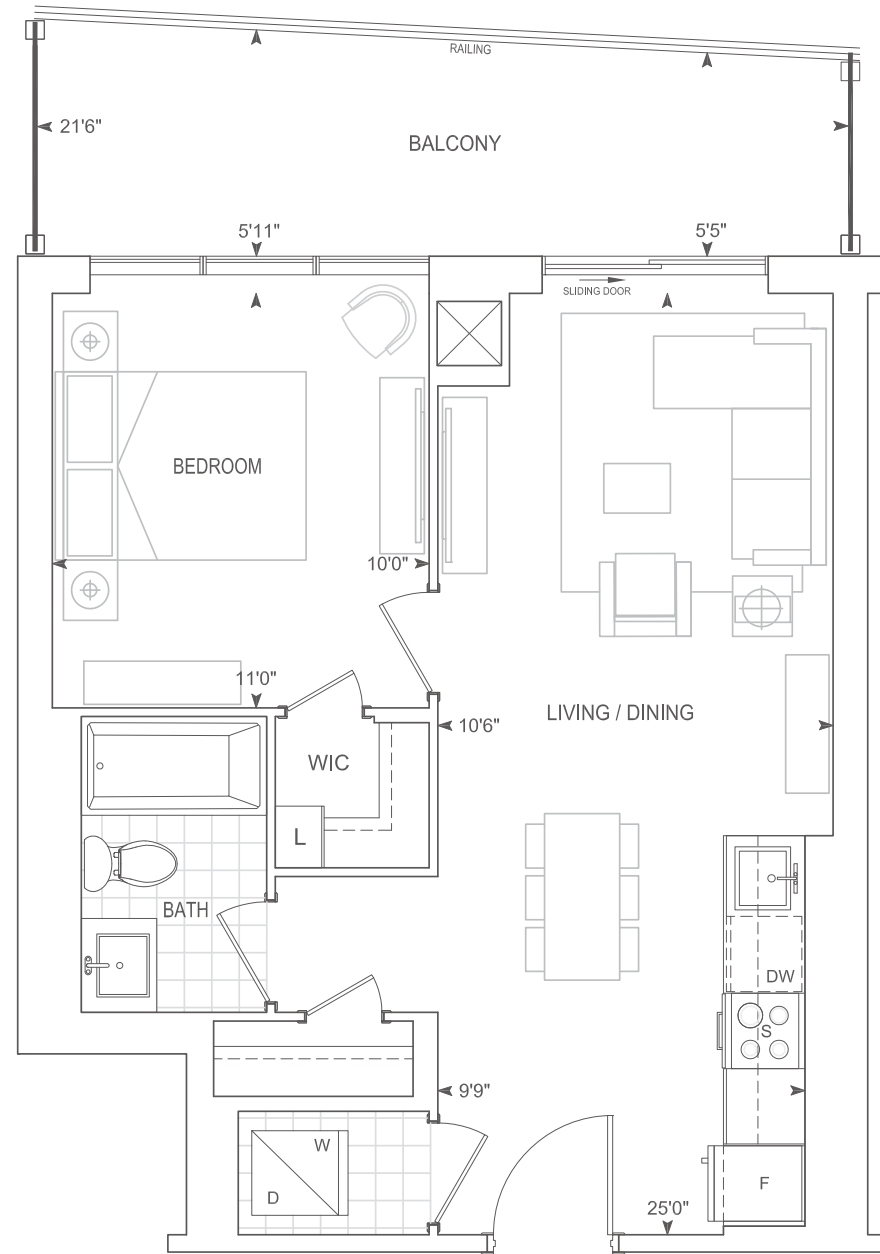
THOMPSON SERIES 10' CEILINGS  
FLOOR 11

Dimensions, specifications, layouts, location of materials and fixtures, tile floor patterns and architectural detailing (including window size and location and door size, location and swing) are approximate only and are subject to change or modifications, without notice. Actual usable floor space varies from stated floor area. Orientation of suite may be reverse and Purchaser agrees to accept same. Balconies, terraces and patios are exclusive use common elements shown for display purposes only and location and size are subject to change without notice. All illustrations are artist concept only. The provisions of Schedule "X" of this Agreement, including Section 6 and 38 apply to this Schedule. E. & O.E. May 2023

# A555

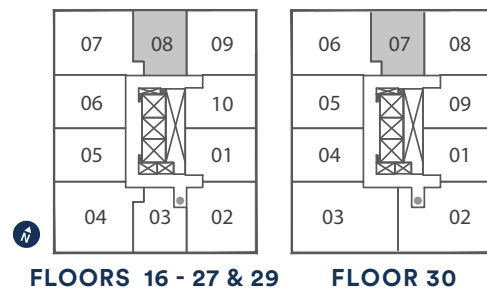
## 1 BEDROOM

Exterior 120 sq.ft. Interior 555 sq.ft. Total 675 sq.ft.



9' CEILINGS  
FLOORS 16 - 21, 23 - 27, 29

THOMPSON SERIES 10' CEILINGS  
FLOORS 22, 30



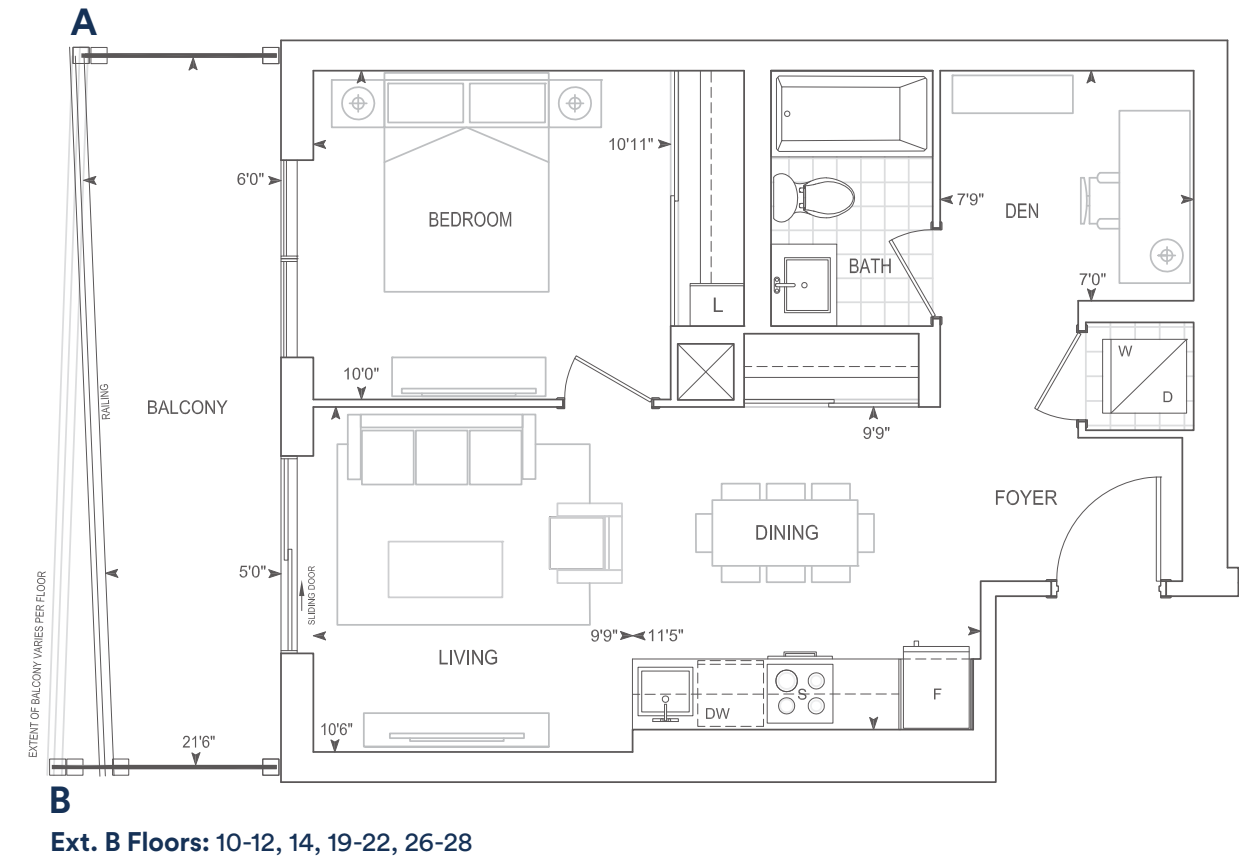
Dimensions, specifications, layouts, location of materials and fixtures, tile floor patterns and architectural detailing (including window size and location and door size, location and swing) are approximate only and are subject to change or modifications, without notice. Actual usable floor space varies from stated floor area. Orientation of suite may be reverse and Purchaser agrees to accept same. Balconies, terraces and patios are exclusive use common elements shown for display purposes only and location and size are subject to change without notice. All illustrations are artist concept only. The provisions of Schedule "X" of this Agreement, including Section 6 and 38 apply to this Schedule. E. & O.E. May 2023

Exterior A 110 sq.ft. Interior 595 sq.ft. Total 705 sq.ft.  
Exterior B 132 sq.ft. Interior 595 sq.ft. Total 727 sq.ft.

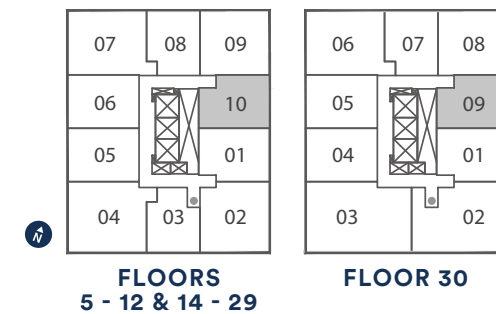
# B595

## 1 BEDROOM + DEN

Ext. A Floors: 5-9, 15-18, 23-25, 29, 30



Ext. B Floors: 10-12, 14, 19-22, 26-28



9' CEILINGS  
FLOORS 5 - 10, 12, 14 - 21, 23 - 29

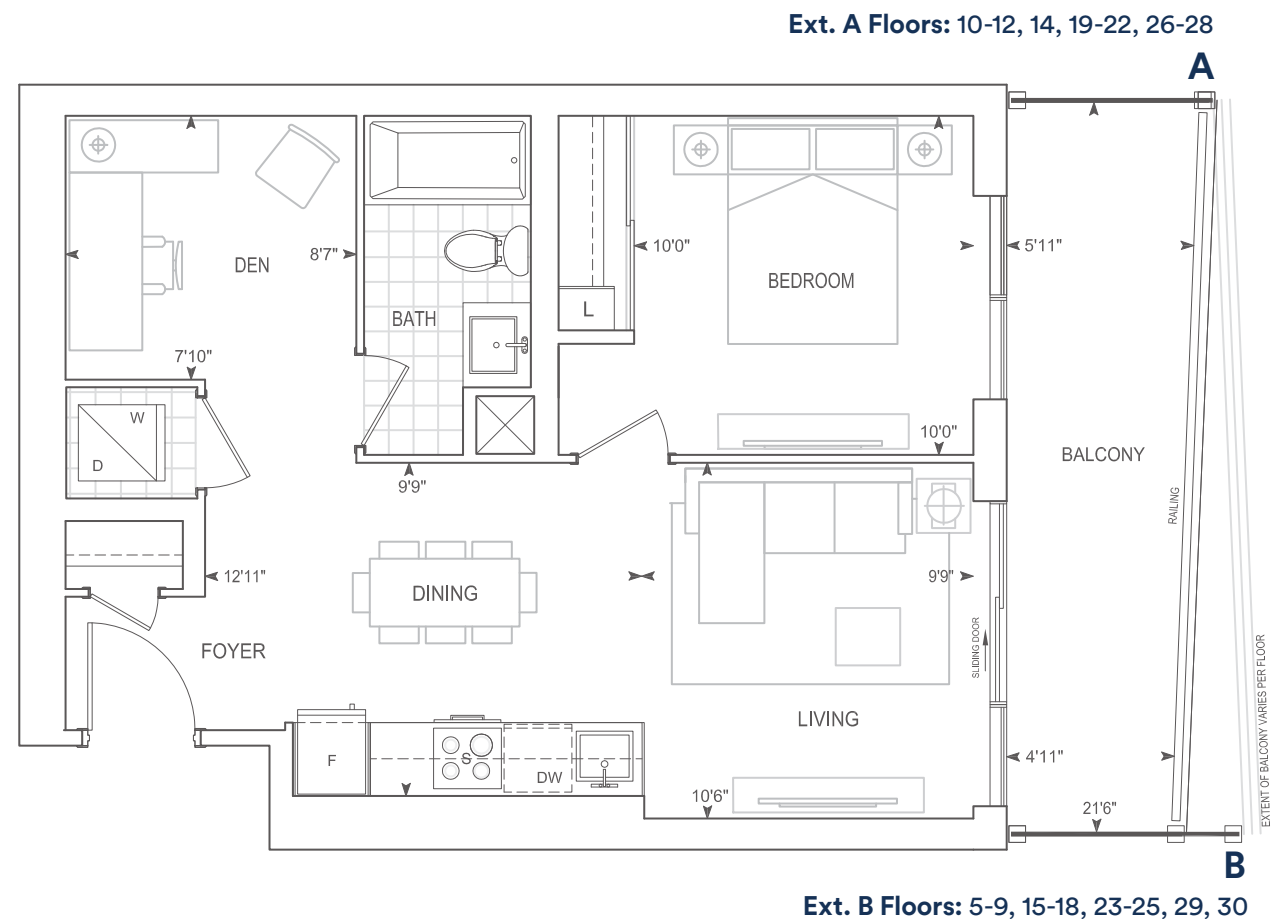
THOMPSON SERIES 10' CEILINGS  
FLOORS 11, 22, 30

Dimensions, specifications, layouts, location of materials and fixtures, tile floor patterns and architectural detailing (including window size and location and door size, location and swing) are approximate only and are subject to change or modifications, without notice. Actual usable floor space varies from stated floor area. Orientation of suite may be reverse and Purchaser agrees to accept same. Balconies, terraces and patios are exclusive use common elements shown for display purposes only and location and size are subject to change without notice. All illustrations are artist concept only. The provisions of Schedule "X" of this Agreement, including Section 6 and 38 apply to this Schedule. E. & O.E. May 2023

# B614

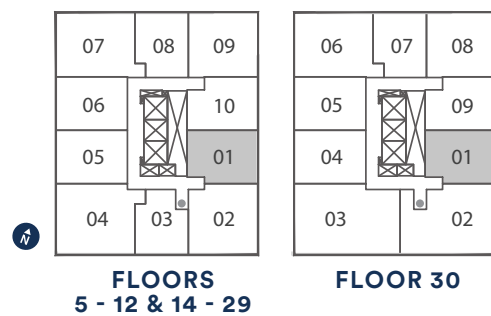
**1 BEDROOM + DEN**

Exterior A 112 sq.ft. Interior 614 sq.ft. Total 726 sq.ft.  
 Exterior B 130 sq.ft. Interior 614 sq.ft. Total 744 sq.ft.



**9' CEILINGS**  
**FLOORS 5 - 10, 12, 14 - 21, 23 - 29**

**THOMPSON SERIES 10' CEILINGS**  
**FLOORS 11, 22, 30**

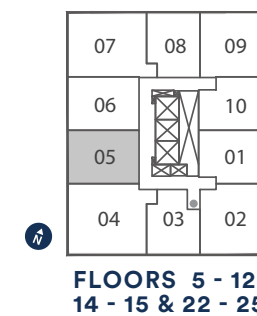
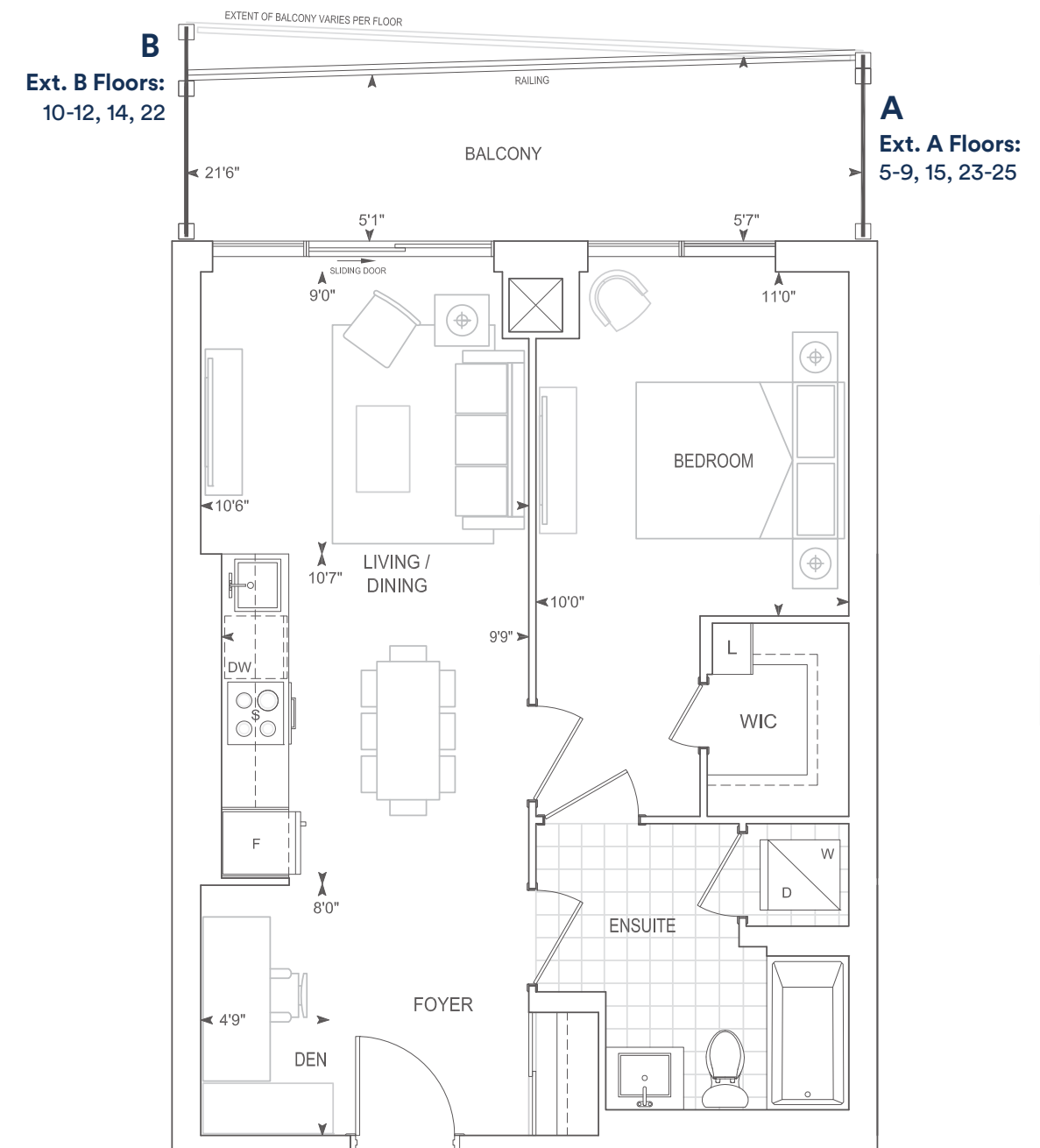


Dimensions, specifications, layouts, location of materials and fixtures, tile floor patterns and architectural detailing (including window size and location and door size, location and swing) are approximate only and are subject to change or modifications, without notice. Actual usable floor space varies from stated floor area. Orientation of suite may be reverse and Purchaser agrees to accept same. Balconies, terraces and patios are exclusive use common elements shown for display purposes only and location and size are subject to change without notice. All illustrations are artist concept only. The provisions of Schedule "X" of this Agreement, including Section 6 and 38 apply to this Schedule. E. & O.E. May 2023

Exterior A 110 sq.ft. Interior 637 sq.ft. Total 747 sq.ft.  
 Exterior B 129 sq.ft. Interior 637 sq.ft. Total 766 sq.ft.

# B637-BF

**1 BEDROOM + DEN**  
 Barrier Free



**9' CEILINGS**  
**FLOORS 5 - 10, 12, 14 - 15, 23 - 25**

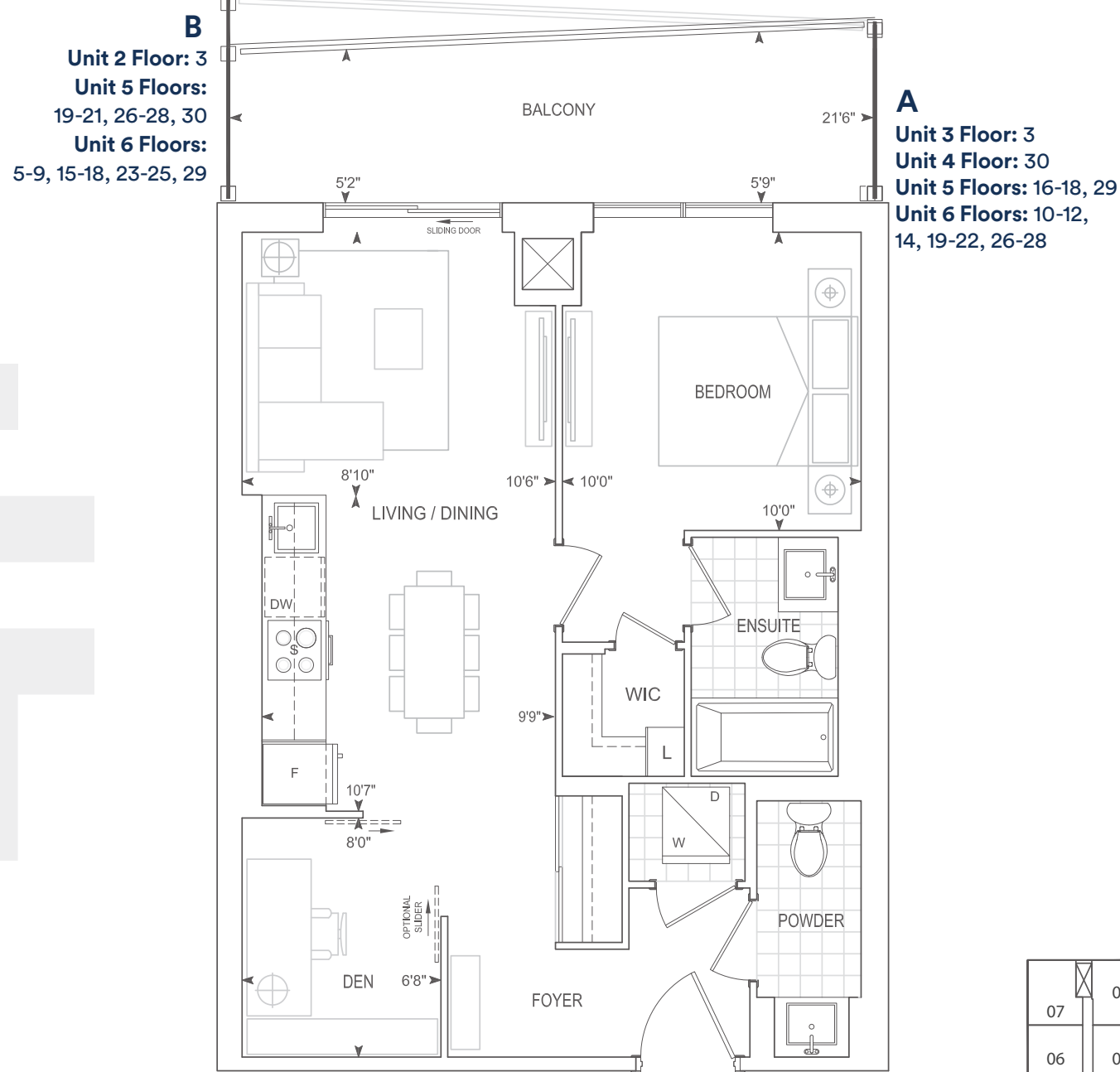
**THOMPSON SERIES 10' CEILINGS**  
**FLOORS 11, 22**

Dimensions, specifications, layouts, location of materials and fixtures, tile floor patterns and architectural detailing (including window size and location and door size, location and swing) are approximate only and are subject to change or modifications, without notice. Actual usable floor space varies from stated floor area. Orientation of suite may be reverse and Purchaser agrees to accept same. Balconies, terraces and patios are exclusive use common elements shown for display purposes only and location and size are subject to change without notice. All illustrations are artist concept only. The provisions of Schedule "X" of this Agreement, including Section 6 and 38 apply to this Schedule. E. & O.E. May 2023

# B637

**1 BEDROOM + DEN**

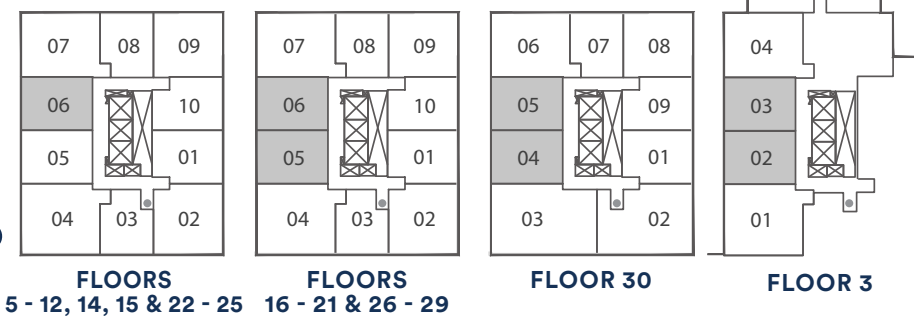
Exterior A 110 sq.ft. Interior 637 sq.ft. Total 747 sq.ft.  
 Exterior B 129 sq.ft. Interior 637 sq.ft. Total 766 sq.ft.



**A**  
 Unit 3 Floor: 3  
 Unit 4 Floor: 30  
 Unit 5 Floors: 16-18, 29  
 Unit 6 Floors: 10-12, 14, 19-22, 26-28

**9' CEILINGS**  
 FLOORS 3, 5 - 10, 12, 14 - 21, 23 - 29

**THOMPSON SERIES 10' CEILINGS**  
 FLOORS 11, 22, 30

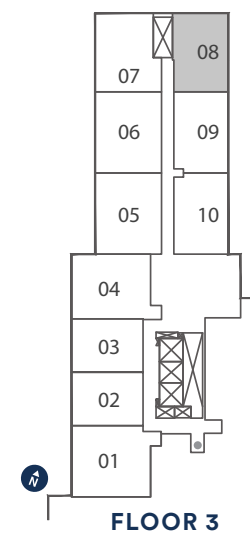
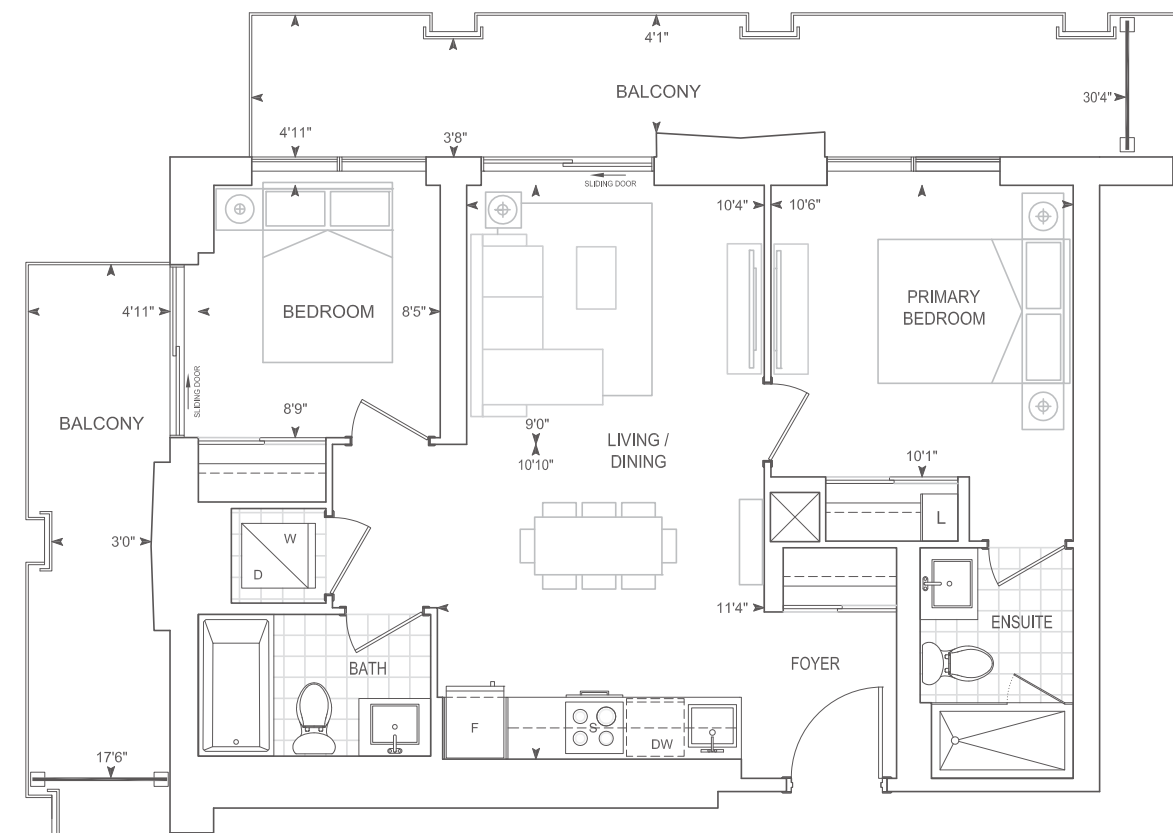


Dimensions, specifications, layouts, location of materials and fixtures, tile floor patterns and architectural detailing (including window size and location and door size, location and swing) are approximate only and are subject to change or modifications, without notice. Actual usable floor space varies from stated floor area. Orientation of suite may be reverse and Purchaser agrees to accept same. Balconies, terraces and patios are exclusive use common elements shown for display purposes only and location and size are subject to change without notice. All illustrations are artist concept only. The provisions of Schedule "X" of this Agreement, including Section 6 and 38 apply to this Schedule. E. & O.E. May 2023

# C722

**2 BEDROOM**

Exterior 212 sq.ft. Interior 722 sq.ft. Total 934 sq.ft.



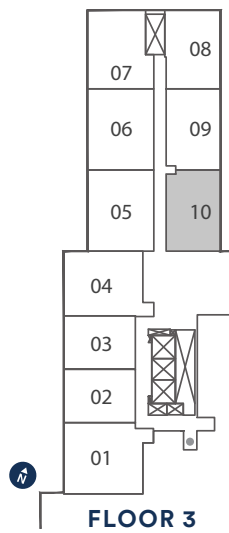
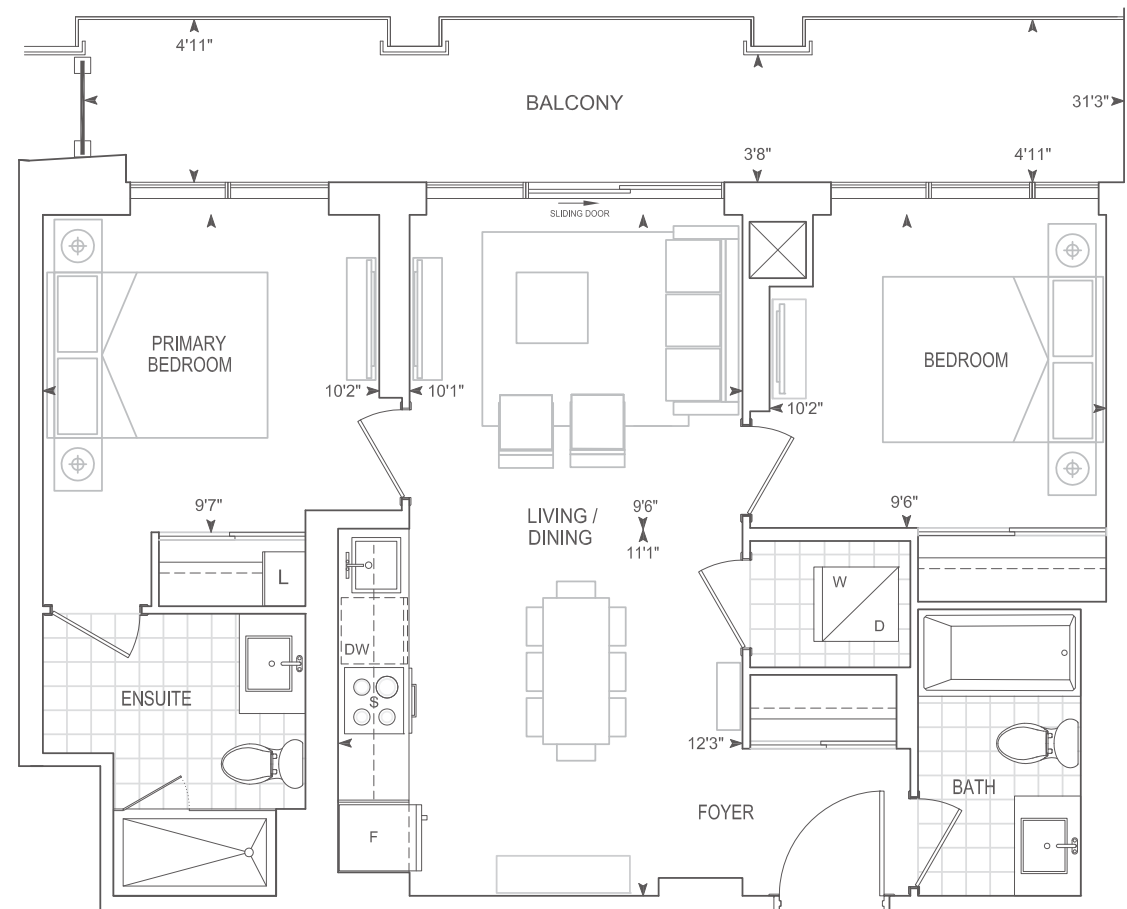
**9' CEILINGS**  
 FLOOR 3

Dimensions, specifications, layouts, location of materials and fixtures, tile floor patterns and architectural detailing (including window size and location and door size, location and swing) are approximate only and are subject to change or modifications, without notice. Actual usable floor space varies from stated floor area. Orientation of suite may be reverse and Purchaser agrees to accept same. Balconies, terraces and patios are exclusive use common elements shown for display purposes only and location and size are subject to change without notice. All illustrations are artist concept only. The provisions of Schedule "X" of this Agreement, including Section 6 and 38 apply to this Schedule. E. & O.E. May 2023

# C735

## 2 BEDROOM

Exterior 144 sq.ft. Interior 735 sq.ft. Total 879 sq.ft.



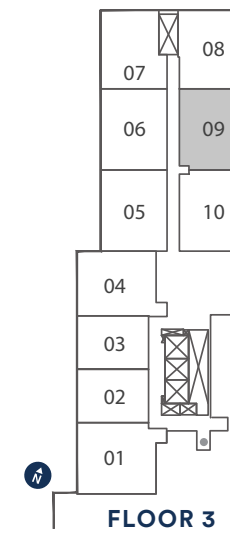
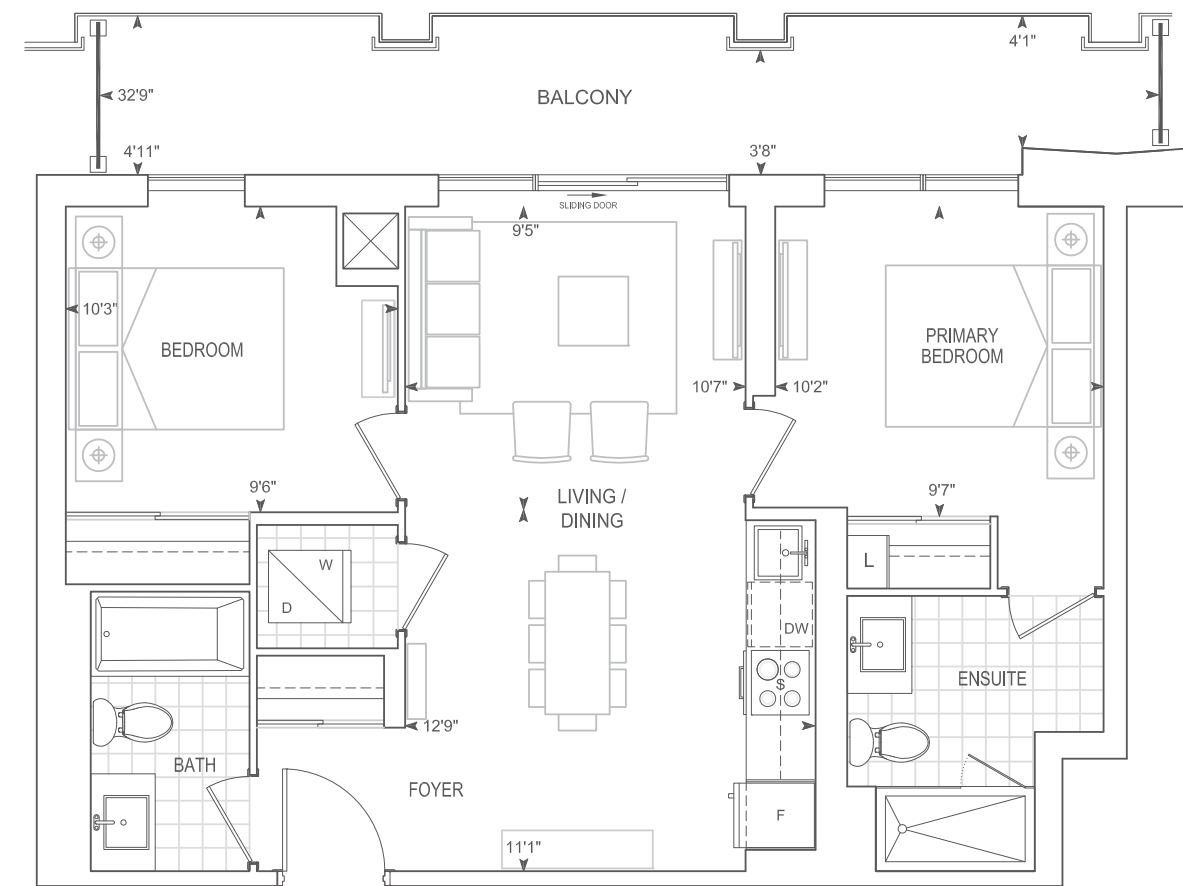
9' CEILINGS  
FLOOR 3

Dimensions, specifications, layouts, location of materials and fixtures, tile floor patterns and architectural detailing (including window size and location and door size, location and swing) are approximate only and are subject to change or modifications, without notice. Actual usable floor space varies from stated floor area. Orientation of suite may be reverse and Purchaser agrees to accept same. Balconies, terraces and patios are exclusive use common elements shown for display purposes only and location and size are subject to change without notice. All illustrations are artist concept only. The provisions of Schedule "X" of this Agreement, including Section 6 and 38 apply to this Schedule. E. & O.E. May 2023

Exterior 147 sq.ft. Interior 736 sq.ft. Total 883 sq.ft.

# C736

## 2 BEDROOM



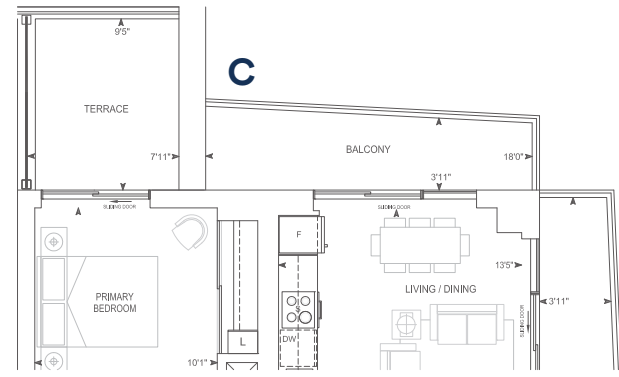
9' CEILINGS  
FLOOR 3

Dimensions, specifications, layouts, location of materials and fixtures, tile floor patterns and architectural detailing (including window size and location and door size, location and swing) are approximate only and are subject to change or modifications, without notice. Actual usable floor space varies from stated floor area. Orientation of suite may be reverse and Purchaser agrees to accept same. Balconies, terraces and patios are exclusive use common elements shown for display purposes only and location and size are subject to change without notice. All illustrations are artist concept only. The provisions of Schedule "X" of this Agreement, including Section 6 and 38 apply to this Schedule. E. & O.E. May 2023

# C756

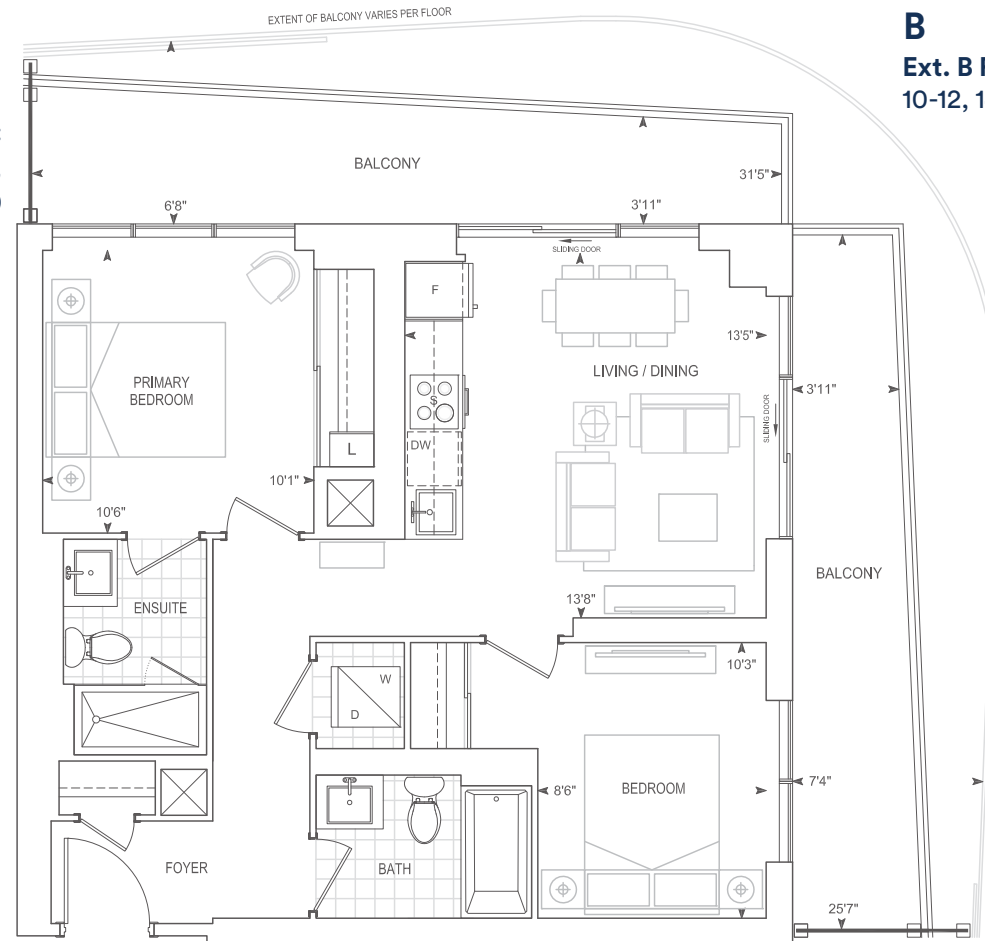
## 2 BEDROOM

Exterior A 227 sq.ft. Interior 756 sq.ft. Total 983 sq.ft.  
 Exterior B 421 sq.ft. Interior 756 sq.ft. Total 1,177 sq.ft.  
 Exterior C 258 sq.ft. Interior 756 sq.ft. Total 1,014 sq.ft.



FLOOR 5 Ext. C

**A**  
 Ext. A Floors:  
 6-9, 15-18,  
 23-25, 29, 30

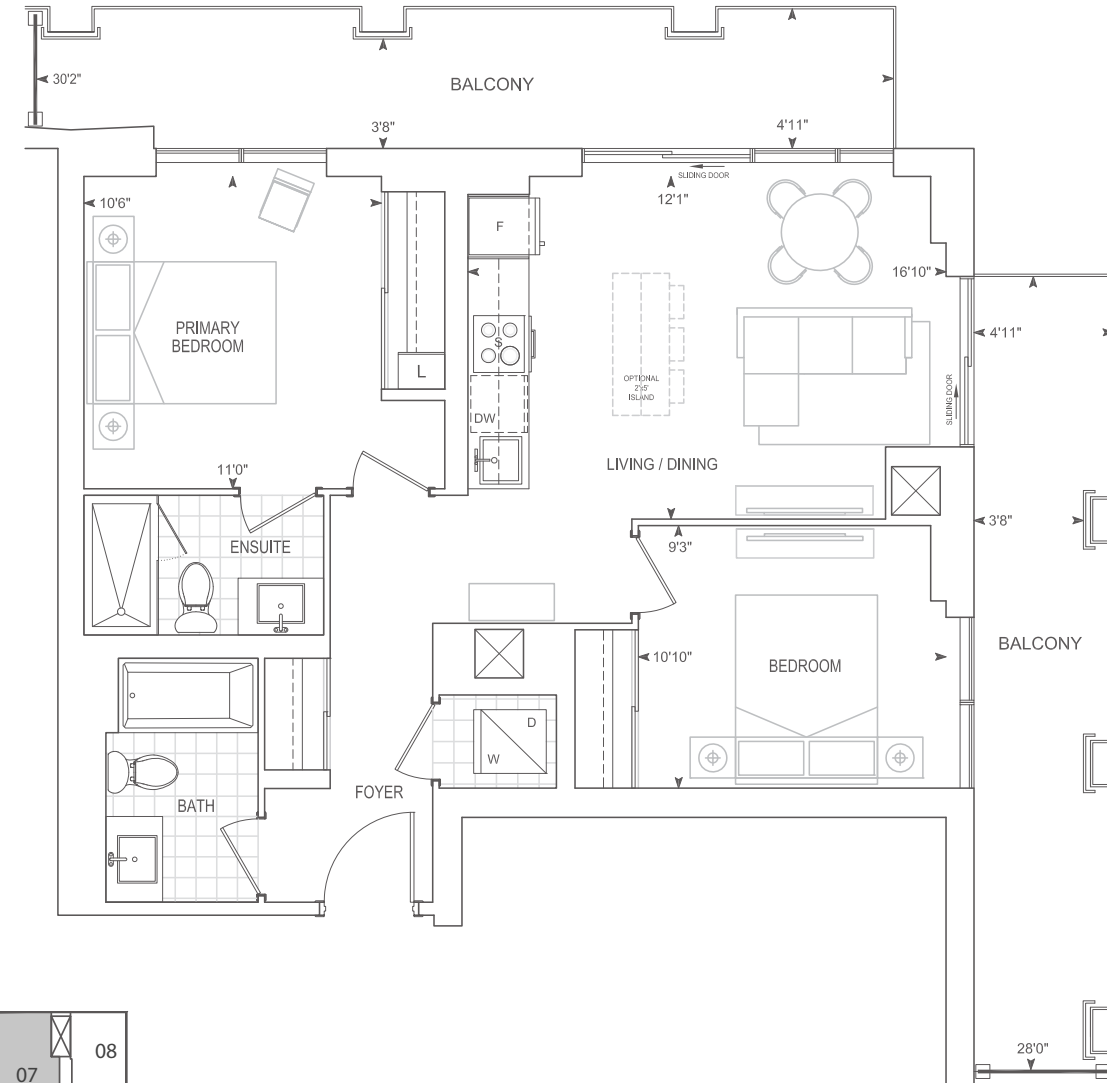


**B**  
 Ext. B Floors:  
 10-12, 14, 19-22, 26-28

Exterior 262 sq.ft. Interior 808 sq.ft. Total 1,070 sq.ft.

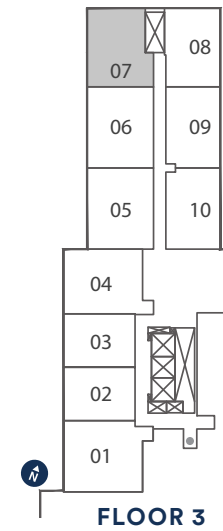
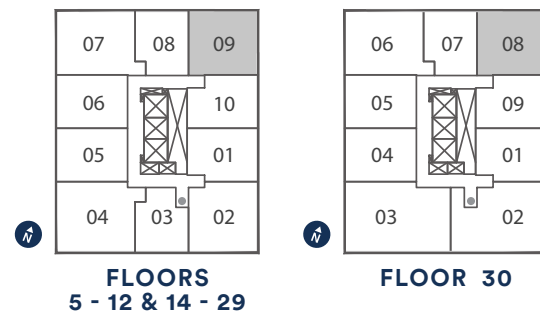
# C808

## 2 BEDROOM



9' CEILINGS  
 FLOORS 5 - 10, 12, 14 - 21, 23 - 29

THOMPSON SERIES 10' CEILINGS  
 FLOORS 11, 22, 30



9' CEILINGS  
 FLOOR 3

Dimensions, specifications, layouts, location of materials and fixtures, tile floor patterns and architectural detailing (including window size and location and door size, location and swing) are approximate only and are subject to change or modifications, without notice. Actual usable floor space varies from stated floor area. Orientation of suite may be reverse and Purchaser agrees to accept same. Balconies, terraces and patios are exclusive use common elements shown for display purposes only and location and size are subject to change without notice. All illustrations are artist concept only. The provisions of Schedule "X" of this Agreement, including Section 6 and 38 apply to this Schedule. E. & O.E. May 2023

Dimensions, specifications, layouts, location of materials and fixtures, tile floor patterns and architectural detailing (including window size and location and door size, location and swing) are approximate only and are subject to change or modifications, without notice. Actual usable floor space varies from stated floor area. Orientation of suite may be reverse and Purchaser agrees to accept same. Balconies, terraces and patios are exclusive use common elements shown for display purposes only and location and size are subject to change without notice. All illustrations are artist concept only. The provisions of Schedule "X" of this Agreement, including Section 6 and 38 apply to this Schedule. E. & O.E. May 2023



# C812-BF

## 2 BEDROOM

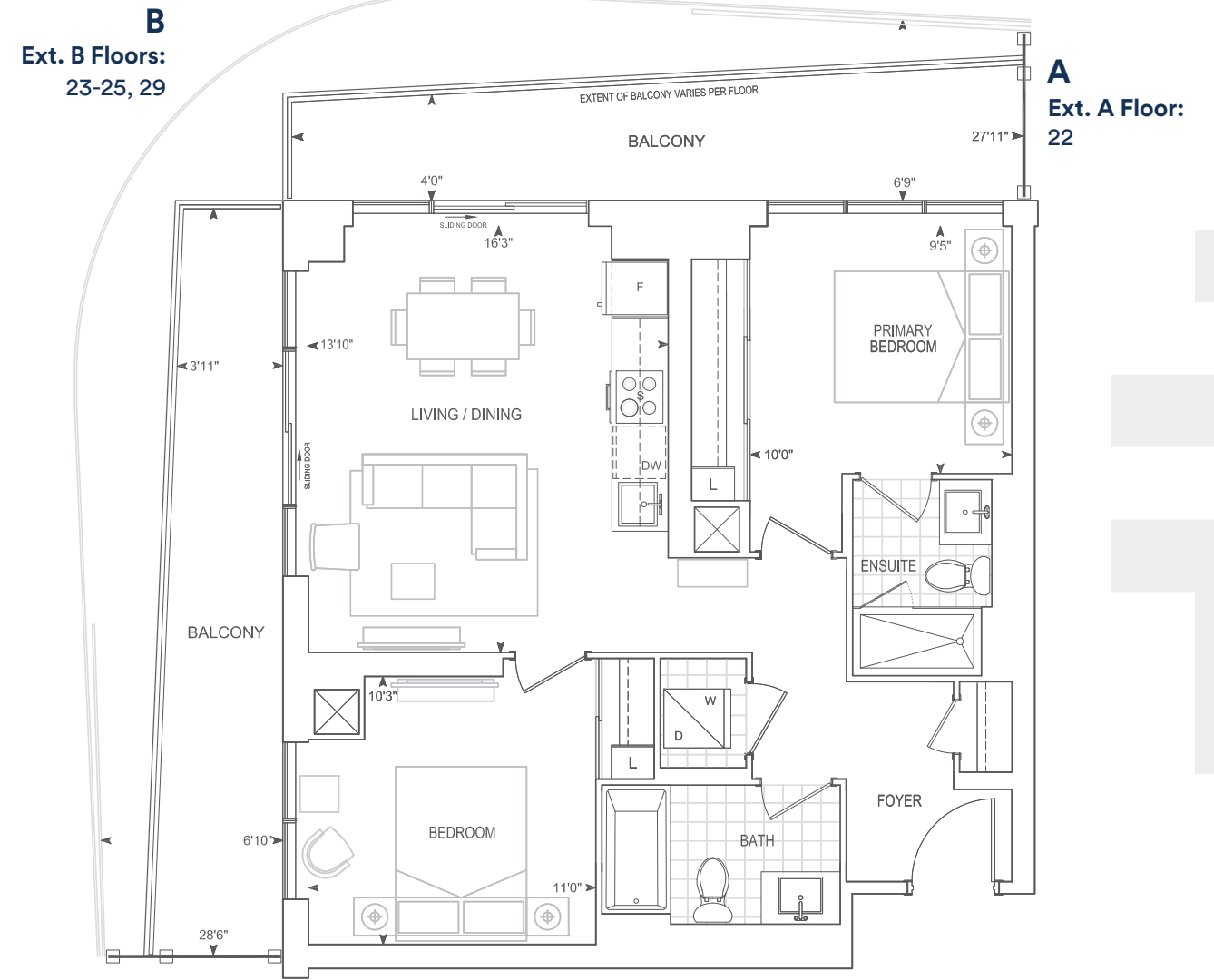
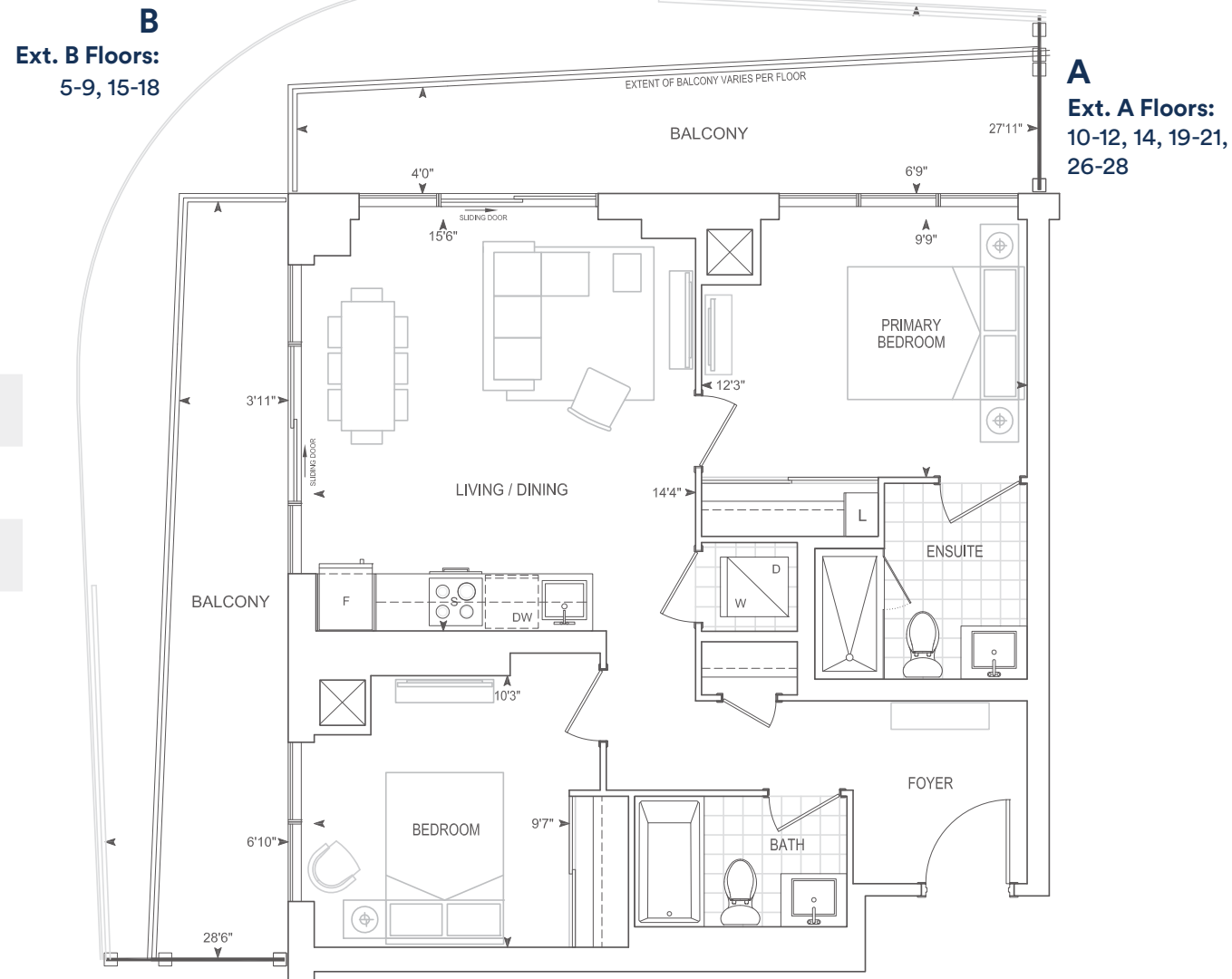
Barrier Free

Exterior A 240 sq.ft. Interior 812 sq.ft. Total 1,052 sq.ft.  
 Exterior B 435 sq.ft. Interior 812 sq.ft. Total 1,247 sq.ft.

Exterior A 240 sq.ft. Interior 812 sq.ft. Total 1,052sq.ft.  
 Exterior B 435 sq.ft. Interior 812 sq.ft. Total 1,247 sq.ft.

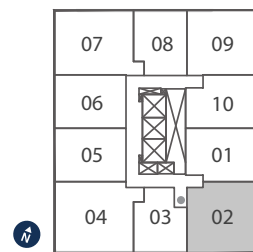
# C812

## 2 BEDROOM



9' CEILINGS  
 FLOORS 5 - 10, 12, 14 - 21, 26 - 28

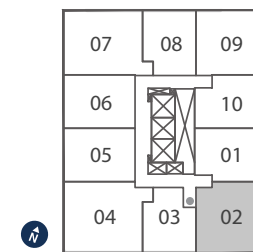
THOMPSON SERIES 10' CEILINGS  
 FLOOR 11



FLOORS 5 - 12,  
 14 - 21 & 26 - 28

9' CEILINGS  
 FLOORS 23 - 25, 29

THOMPSON SERIES 10' CEILINGS  
 FLOOR 22



FLOORS 22 - 25 &  
 29

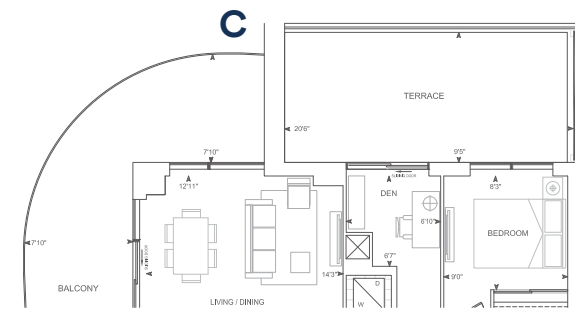
Dimensions, specifications, layouts, location of materials and fixtures, tile floor patterns and architectural detailing (including window size and location and door size, location and swing) are approximate only and are subject to change or modifications, without notice. Actual usable floor space varies from stated floor area. Orientation of suite may be reverse and Purchaser agrees to accept same. Balconies, terraces and patios are exclusive use common elements shown for display purposes only and location and size are subject to change without notice. All illustrations are artist concept only. The provisions of Schedule "X" of this Agreement, including Section 6 and 38 apply to this Schedule. E. & O.E. May 2023

Dimensions, specifications, layouts, location of materials and fixtures, tile floor patterns and architectural detailing (including window size and location and door size, location and swing) are approximate only and are subject to change or modifications, without notice. Actual usable floor space varies from stated floor area. Orientation of suite may be reverse and Purchaser agrees to accept same. Balconies, terraces and patios are exclusive use common elements shown for display purposes only and location and size are subject to change without notice. All illustrations are artist concept only. The provisions of Schedule "X" of this Agreement, including Section 6 and 38 apply to this Schedule. E. & O.E. May 2023

# D880

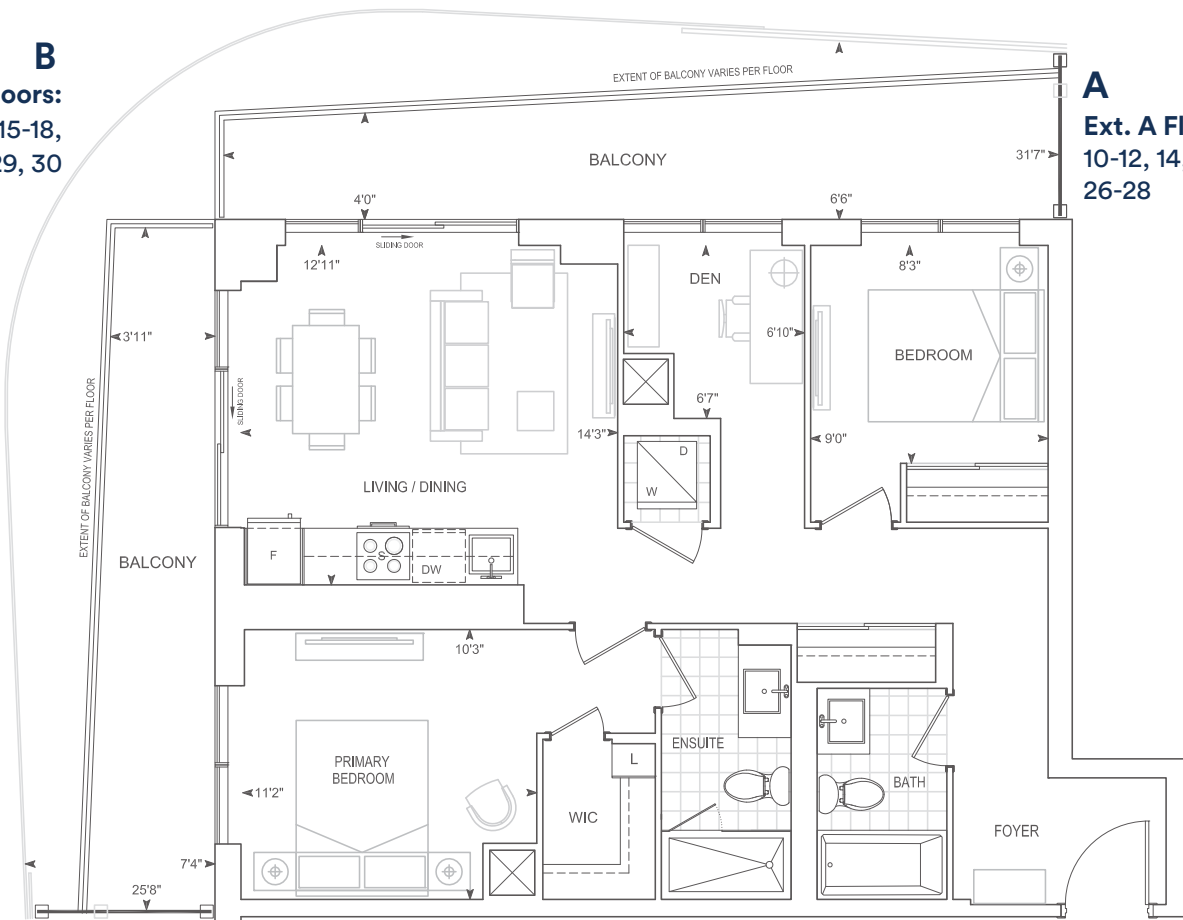
**2 BEDROOM + DEN**

Exterior A 248 sq.ft. Interior 880 sq.ft. Total 1,128 sq.ft.  
 Exterior B 450 sq.ft. Interior 880 sq.ft. Total 1,330 sq.ft.  
 Exterior C 489 sq.ft. Interior 880 sq.ft. Total 1,369 sq.ft.



**FLOOR 5 Ext. C**

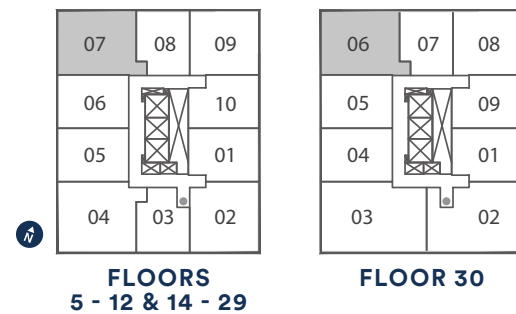
**B**  
 Ext. B Floors:  
 6-9, 15-18,  
 23-25, 29, 30



**A**  
 Ext. A Floors:  
 10-12, 14, 19-22,  
 26-28

**9' CEILINGS**  
 FLOORS 5 - 10, 12, 14 - 21, 23 - 29

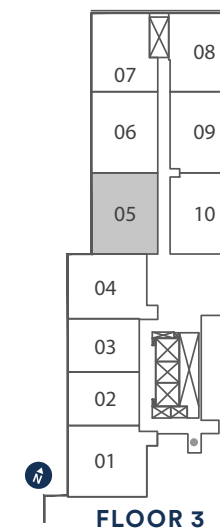
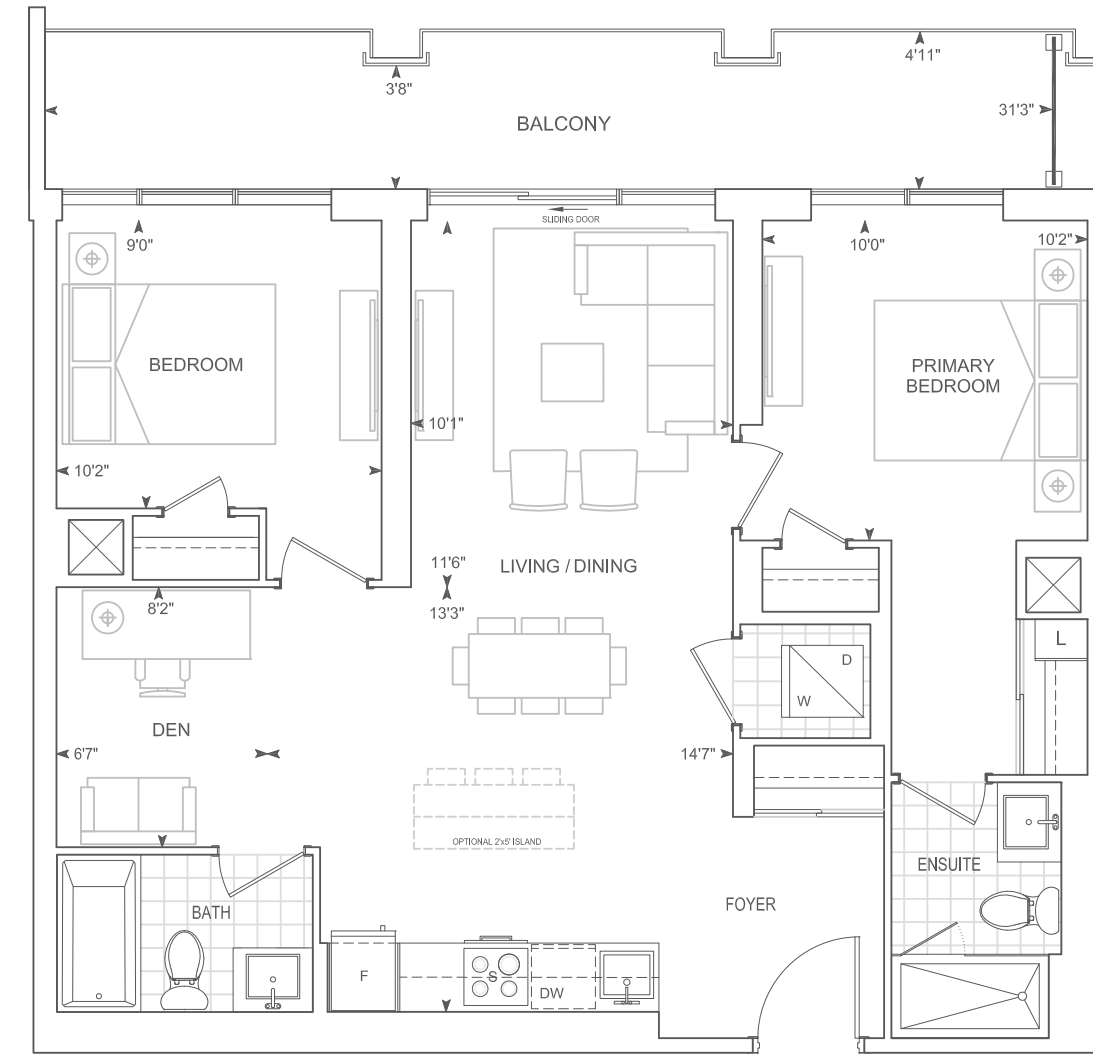
**THOMPSON SERIES 10' CEILINGS**  
 FLOORS 11, 22, 30



# D902

**2 BEDROOM + DEN**

Exterior 145 sq.ft. Interior 902 sq.ft. Total 1,047 sq.ft.



**9' CEILINGS**  
 FLOOR 3

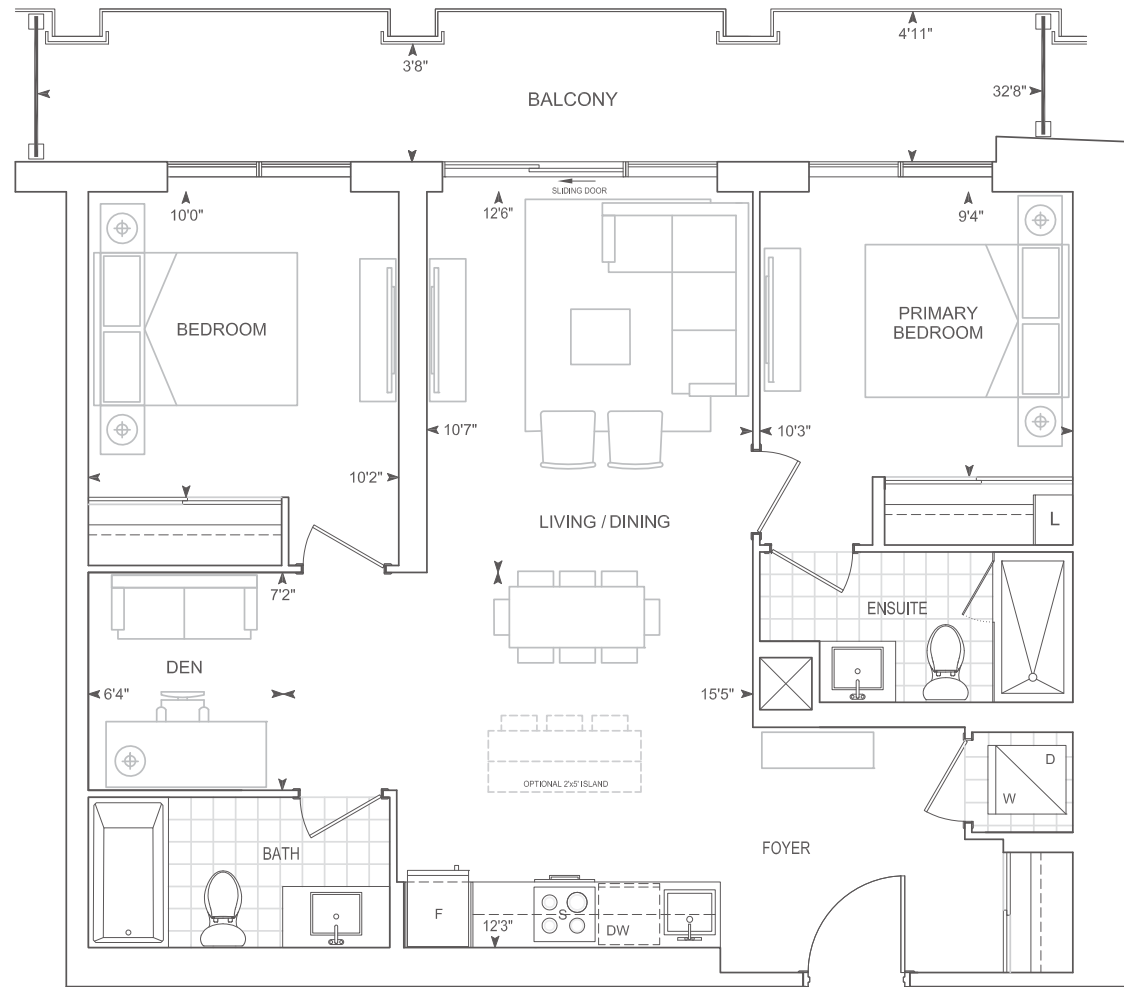
Dimensions, specifications, layouts, location of materials and fixtures, tile floor patterns and architectural detailing (including window size and location and door size, location and swing) are approximate only and are subject to change or modifications, without notice. Actual usable floor space varies from stated floor area. Orientation of suite may be reverse and Purchaser agrees to accept same. Balconies, terraces and patios are exclusive use common elements shown for display purposes only and location and size are subject to change without notice. All illustrations are artist concept only. The provisions of Schedule "X" of this Agreement, including Section 6 and 38 apply to this Schedule. E. & O.E. May 2023

Dimensions, specifications, layouts, location of materials and fixtures, tile floor patterns and architectural detailing (including window size and location and door size, location and swing) are approximate only and are subject to change or modifications, without notice. Actual usable floor space varies from stated floor area. Orientation of suite may be reverse and Purchaser agrees to accept same. Balconies, terraces and patios are exclusive use common elements shown for display purposes only and location and size are subject to change without notice. All illustrations are artist concept only. The provisions of Schedule "X" of this Agreement, including Section 6 and 38 apply to this Schedule. E. & O.E. May 2023

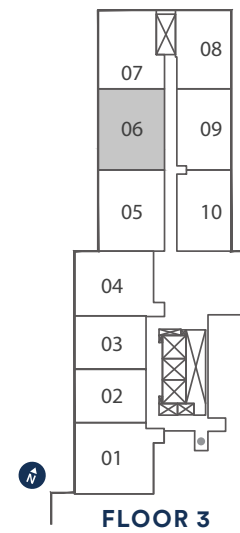
# D903

## 2 BEDROOM + DEN

Exterior 150 sq.ft. Interior 903 sq.ft. Total 1,053 sq.ft.



9' CEILINGS  
FLOOR 3

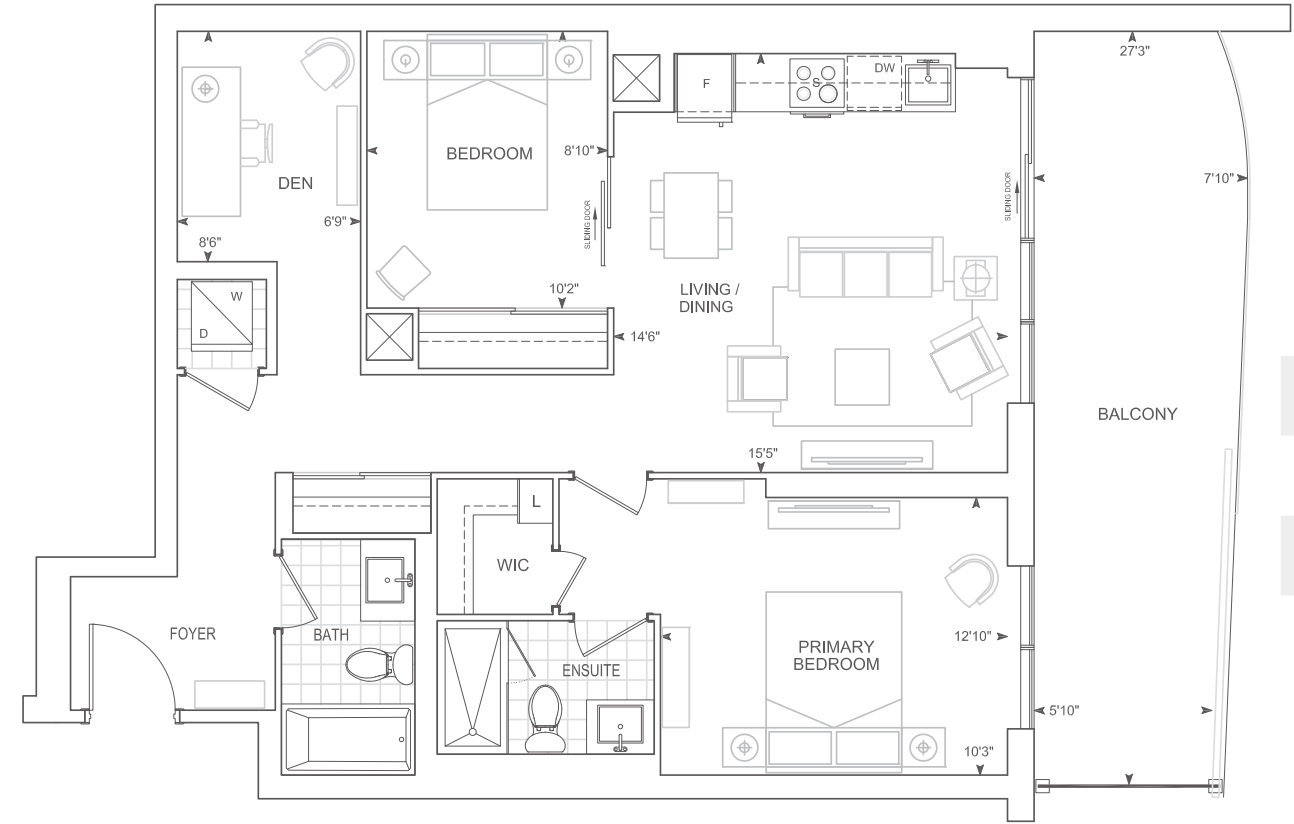


Dimensions, specifications, layouts, location of materials and fixtures, tile floor patterns and architectural detailing (including window size and location and door size, location and swing) are approximate only and are subject to change or modifications, without notice. Actual usable floor space varies from stated floor area. Orientation of suite may be reverse and Purchaser agrees to accept same. Balconies, terraces and patios are exclusive use common elements shown for display purposes only and location and size are subject to change without notice. All illustrations are artist concept only. The provisions of Schedule "X" of this Agreement, including Section 6 and 38 apply to this Schedule. E. & O.E. May 2023

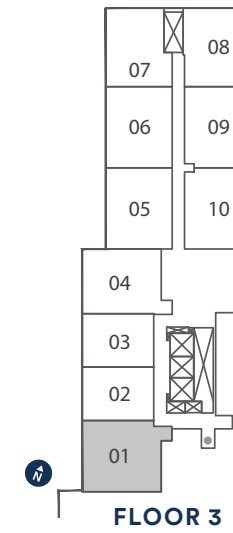
Exterior 198 sq.ft. Interior 956 sq.ft. Total 1,154 sq.ft.

# D956

## 2 BEDROOM + DEN



9' CEILINGS  
FLOOR 3

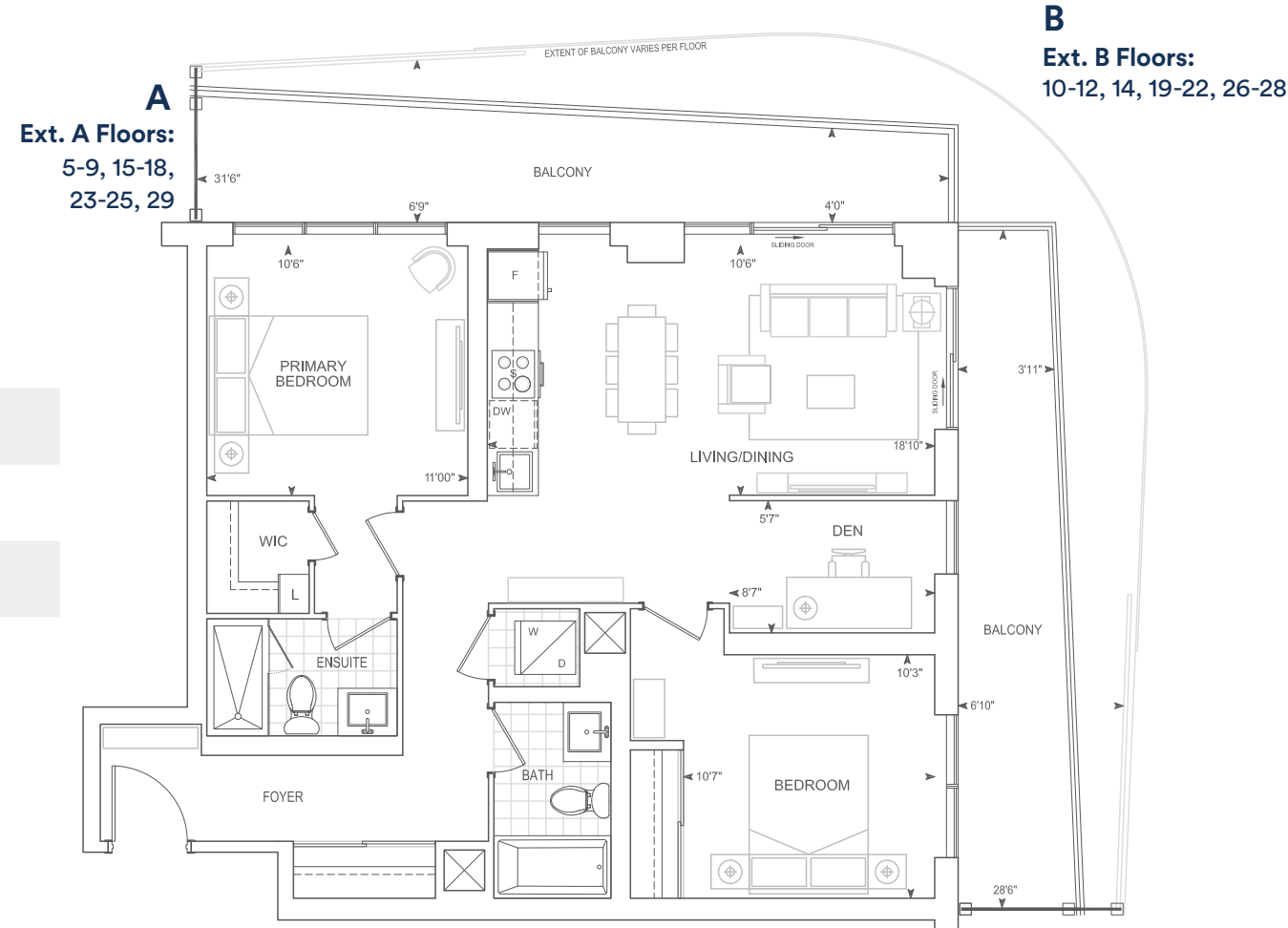


Dimensions, specifications, layouts, location of materials and fixtures, tile floor patterns and architectural detailing (including window size and location and door size, location and swing) are approximate only and are subject to change or modifications, without notice. Actual usable floor space varies from stated floor area. Orientation of suite may be reverse and Purchaser agrees to accept same. Balconies, terraces and patios are exclusive use common elements shown for display purposes only and location and size are subject to change without notice. All illustrations are artist concept only. The provisions of Schedule "X" of this Agreement, including Section 6 and 38 apply to this Schedule. E. & O.E. May 2023

# D957

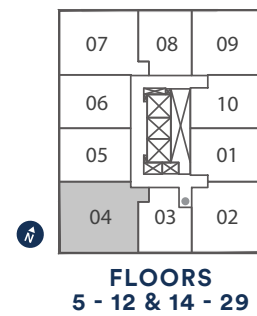
**2 BEDROOM + DEN**

Exterior A 261 sq.ft. Interior 957 sq.ft. Total 1,218 sq.ft.  
 Exterior B 459 sq.ft. Interior 957 sq.ft. Total 1,416 sq.ft.



**9' CEILINGS**  
**FLOORS 5 - 10, 12, 14 - 21, 23 - 29**

**THOMPSON SERIES 10' CEILINGS**  
**FLOORS 11, 22**

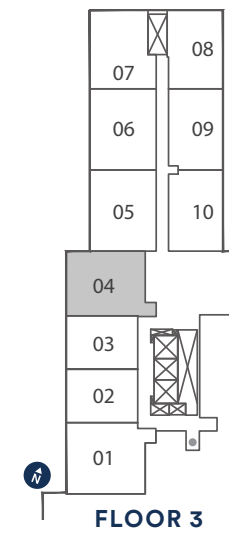
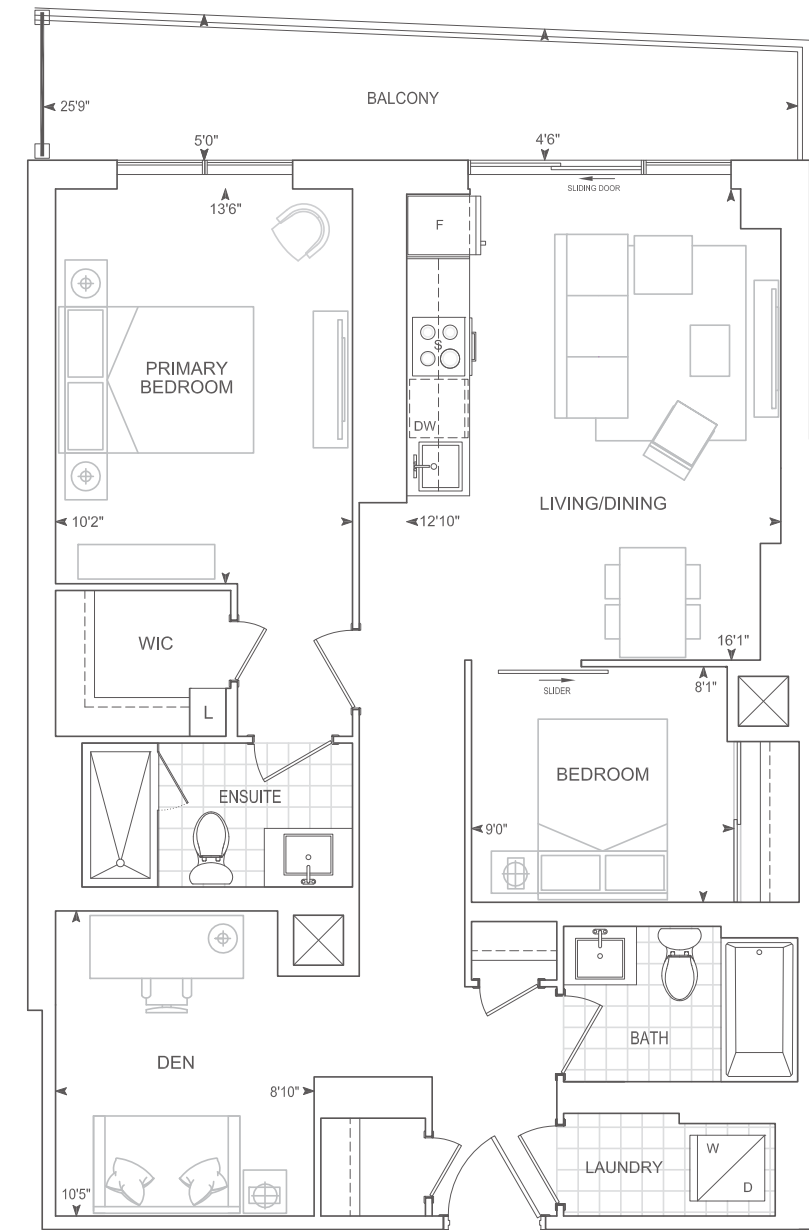


Dimensions, specifications, layouts, location of materials and fixtures, tile floor patterns and architectural detailing (including window size and location and door size, location and swing) are approximate only and are subject to change or modifications, without notice. Actual usable floor space varies from stated floor area. Orientation of suite may be reverse and Purchaser agrees to accept same. Balconies, terraces and patios are exclusive use common elements shown for display purposes only and location and size are subject to change without notice. All illustrations are artist concept only. The provisions of Schedule "X" of this Agreement, including Section 6 and 38 apply to this Schedule. E. & O.E. May 2023

# D974

**2 BEDROOM + DEN**

Exterior 107 sq.ft. Interior 974 sq.ft. Total 1,081 sq.ft.



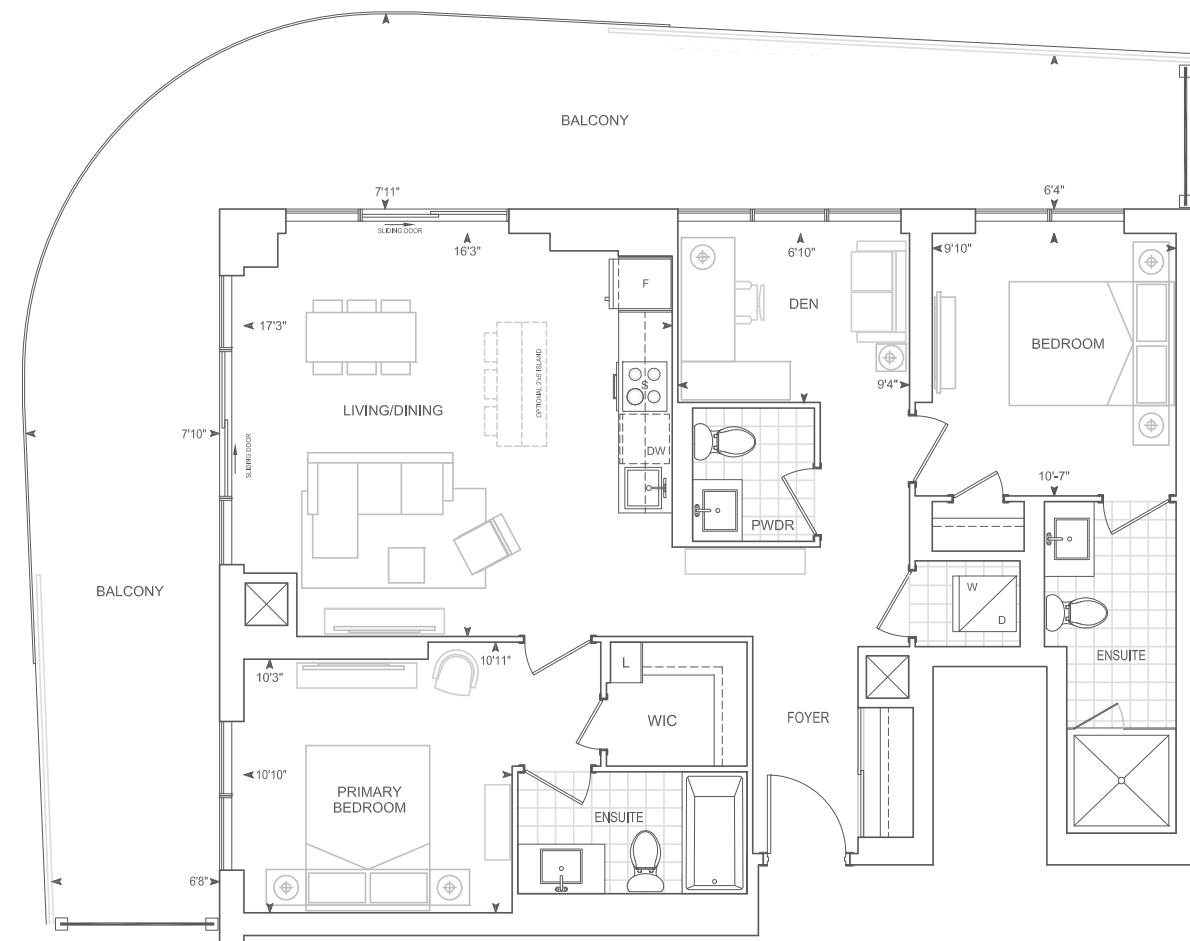
**9' CEILINGS**  
**FLOOR 3**

Dimensions, specifications, layouts, location of materials and fixtures, tile floor patterns and architectural detailing (including window size and location and door size, location and swing) are approximate only and are subject to change or modifications, without notice. Actual usable floor space varies from stated floor area. Orientation of suite may be reverse and Purchaser agrees to accept same. Balconies, terraces and patios are exclusive use common elements shown for display purposes only and location and size are subject to change without notice. All illustrations are artist concept only. The provisions of Schedule "X" of this Agreement, including Section 6 and 38 apply to this Schedule. E. & O.E. May 2023

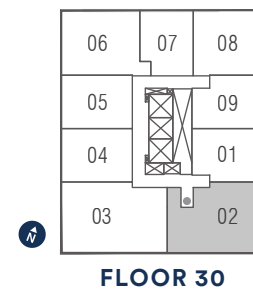
# D1062

## 2 BEDROOM + DEN

Exterior 501 sq.ft. Interior 1062 sq.ft. Total 1,563 sq.ft.



**THOMPSON SERIES 10' CEILINGS**  
FLOOR 30

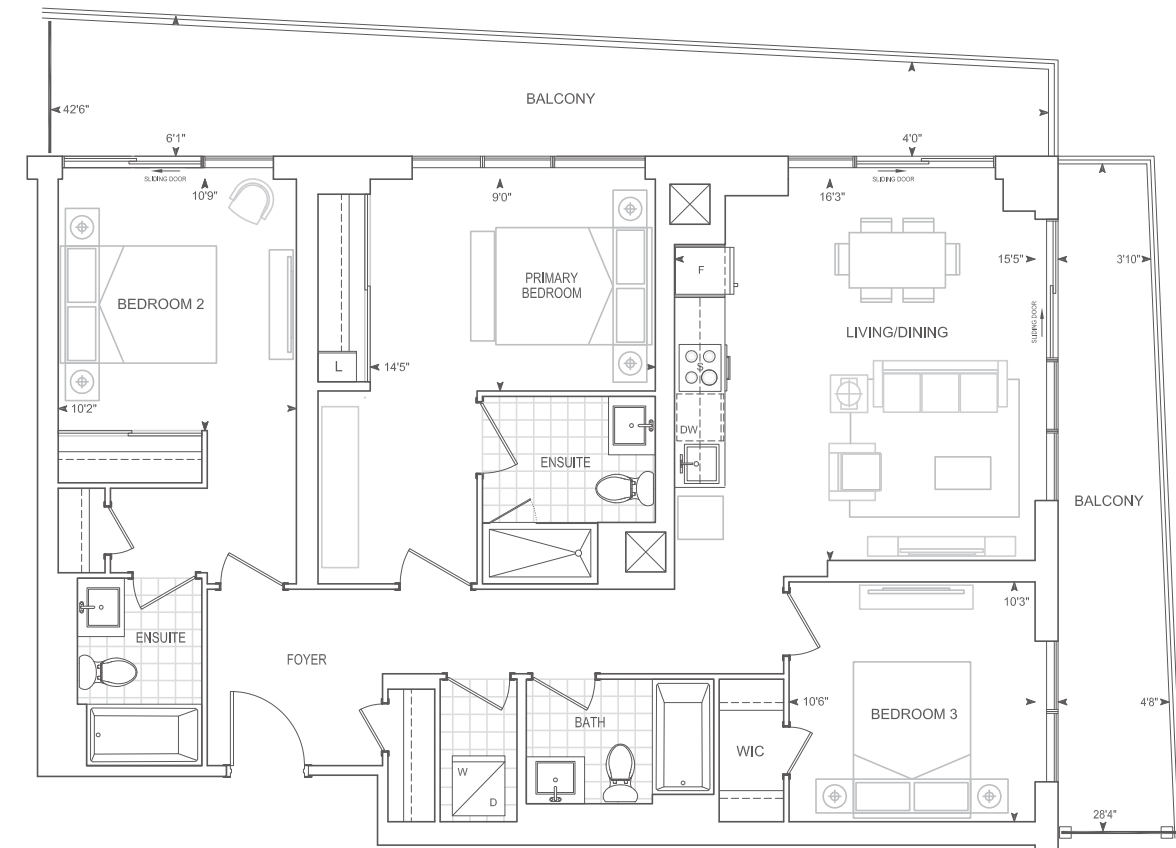


Exterior 321 sq.ft. Interior 1227 sq.ft. Total 1,548 sq.ft.

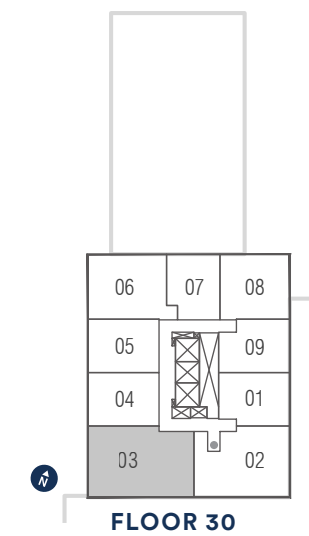
# E1227-BF

## 3 BEDROOM

Barrier Free



**THOMPSON SERIES 10' CEILINGS**  
FLOOR 30



Dimensions, specifications, layouts, location of materials and fixtures, tile floor patterns and architectural detailing (including window size and location and door size, location and swing) are approximate only and are subject to change or modifications, without notice. Actual usable floor space varies from stated floor area. Orientation of suite may be reverse and Purchaser agrees to accept same. Balconies, terraces and patios are exclusive use common elements shown for display purposes only and location and size are subject to change without notice. All illustrations are artist concept only. The provisions of Schedule "X" of this Agreement, including Section 6 and 38 apply to this Schedule. E. & O.E. May 2023

Dimensions, specifications, layouts, location of materials and fixtures, tile floor patterns and architectural detailing (including window size and location and door size, location and swing) are approximate only and are subject to change or modifications, without notice. Actual usable floor space varies from stated floor area. Orientation of suite may be reverse and Purchaser agrees to accept same. Balconies, terraces and patios are exclusive use common elements shown for display purposes only and location and size are subject to change without notice. All illustrations are artist concept only. The provisions of Schedule "X" of this Agreement, including Section 6 and 38 apply to this Schedule. E. & O.E. May 2023

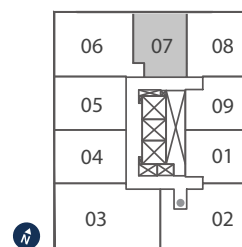
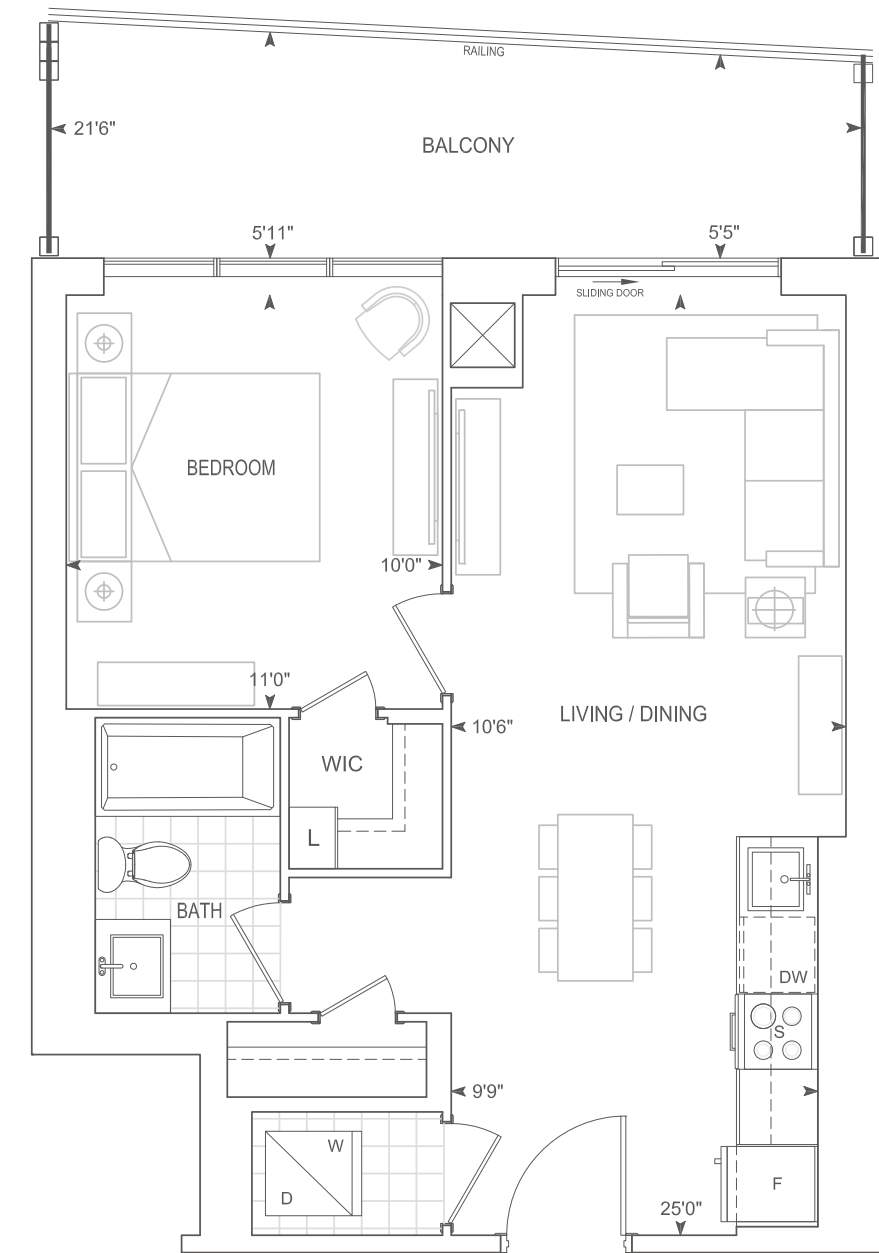
# Penthouse Suites & Townhomes

Exterior 120 sq.ft. Interior 555 sq.ft. Total 675 sq.ft.

**A555 PH**  
**1 BEDROOM**



\*artist's impression



**PENTHOUSE**

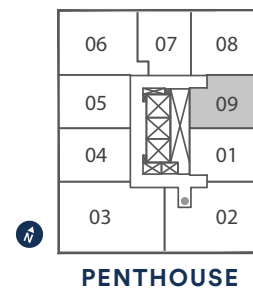
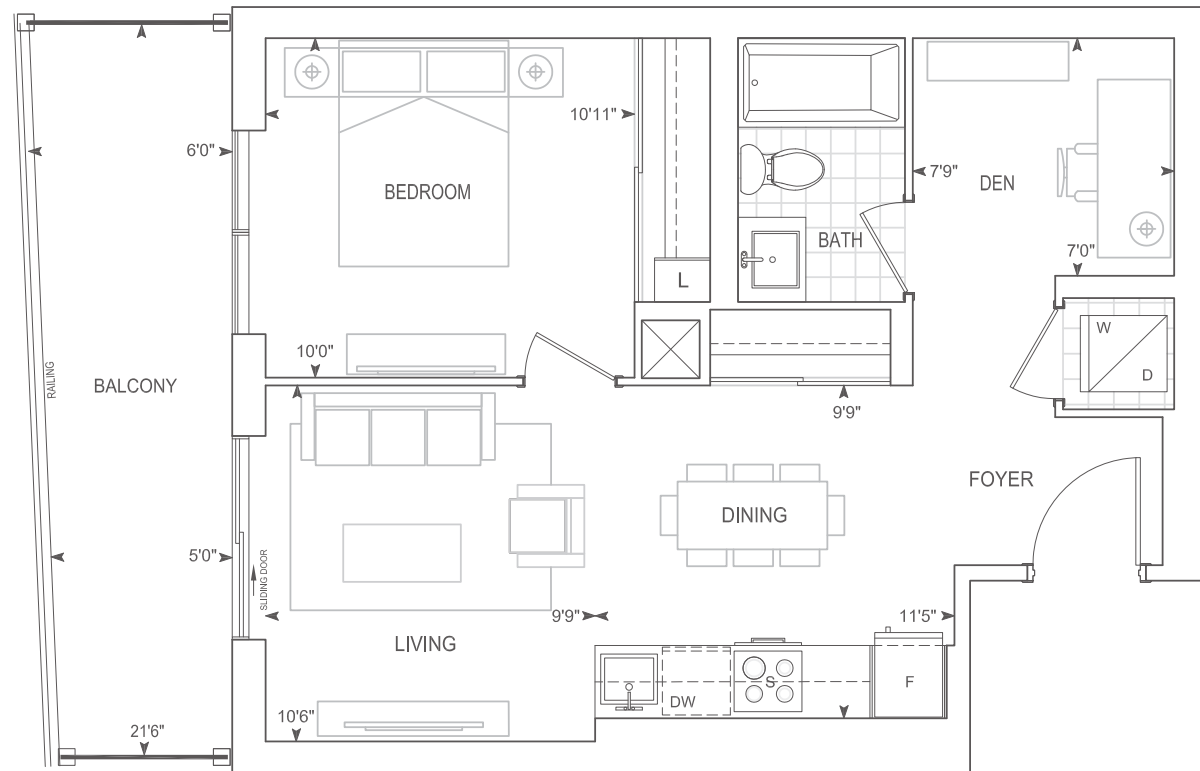
**PENTHOUSE 10' CEILINGS**

Dimensions, specifications, layouts, location of materials and fixtures, tile floor patterns and architectural detailing (including window size and location and door size, location and swing) are approximate only and are subject to change or modifications, without notice. Actual usable floor space varies from stated floor area. Orientation of suite may be reverse and Purchaser agrees to accept same. Balconies, terraces and patios are exclusive use common elements shown for display purposes only and location and size are subject to change without notice. All illustrations are artist concept only. The provisions of Schedule "X" of this Agreement, including Section 6 and 38 apply to this Schedule. E. & O.E. May 2023

# B595 PH

## 1 BEDROOM + DEN

Exterior 110 sq.ft. Interior 595 sq.ft. Total 705 sq.ft.



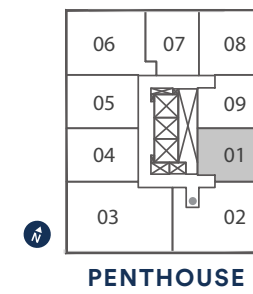
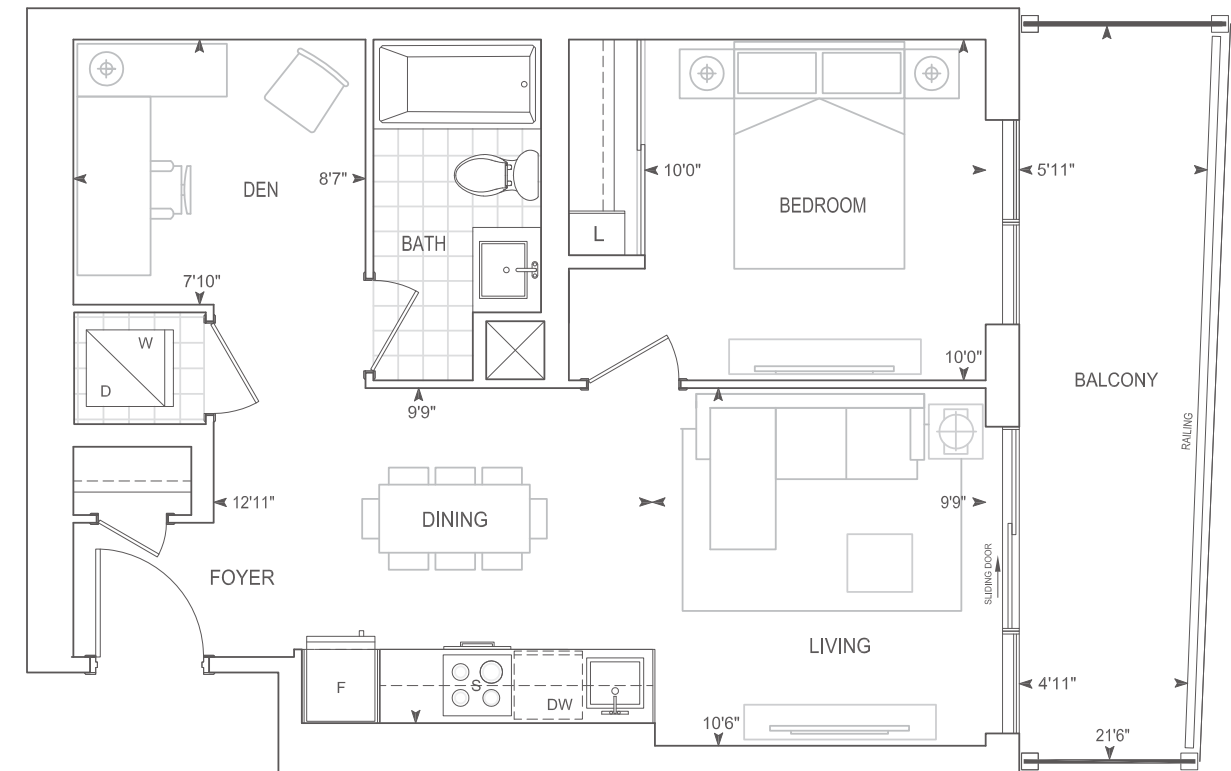
**PENTHOUSE 10' CEILINGS**

Dimensions, specifications, layouts, location of materials and fixtures, tile floor patterns and architectural detailing (including window size and location and door size, location and swing) are approximate only and are subject to change or modifications, without notice. Actual usable floor space varies from stated floor area. Orientation of suite may be reverse and Purchaser agrees to accept same. Balconies, terraces and patios are exclusive use common elements shown for display purposes only and location and size are subject to change without notice. All illustrations are artist concept only. The provisions of Schedule "X" of this Agreement, including Section 6 and 38 apply to this Schedule. E. & O.E. May 2023

Exterior 130 sq.ft. Interior 614 sq.ft. Total 744 sq.ft.

# B614 PH

## 1 BEDROOM + DEN



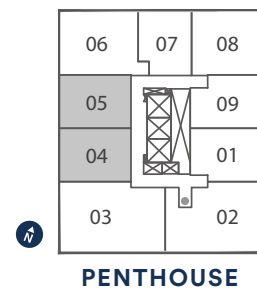
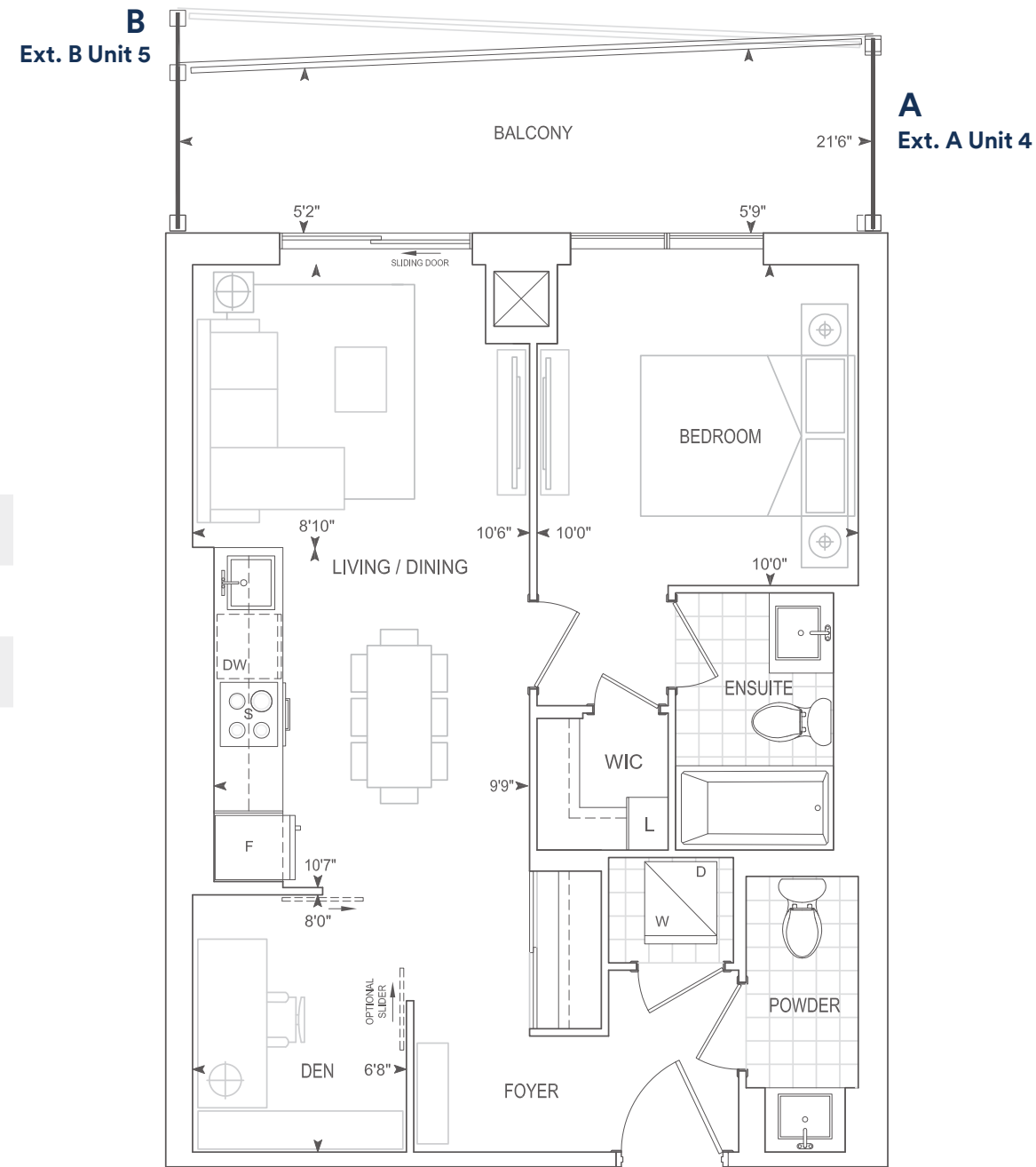
**PENTHOUSE 10' CEILINGS**

Dimensions, specifications, layouts, location of materials and fixtures, tile floor patterns and architectural detailing (including window size and location and door size, location and swing) are approximate only and are subject to change or modifications, without notice. Actual usable floor space varies from stated floor area. Orientation of suite may be reverse and Purchaser agrees to accept same. Balconies, terraces and patios are exclusive use common elements shown for display purposes only and location and size are subject to change without notice. All illustrations are artist concept only. The provisions of Schedule "X" of this Agreement, including Section 6 and 38 apply to this Schedule. E. & O.E. May 2023

# B637 PH

## 1 BEDROOM + DEN

Exterior A 110 sq.ft. Interior 637 sq.ft. Total 747 sq.ft.  
 Exterior B 129 sq.ft. Interior 637 sq.ft. Total 766 sq.ft.



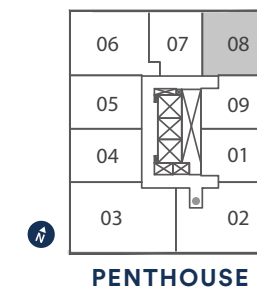
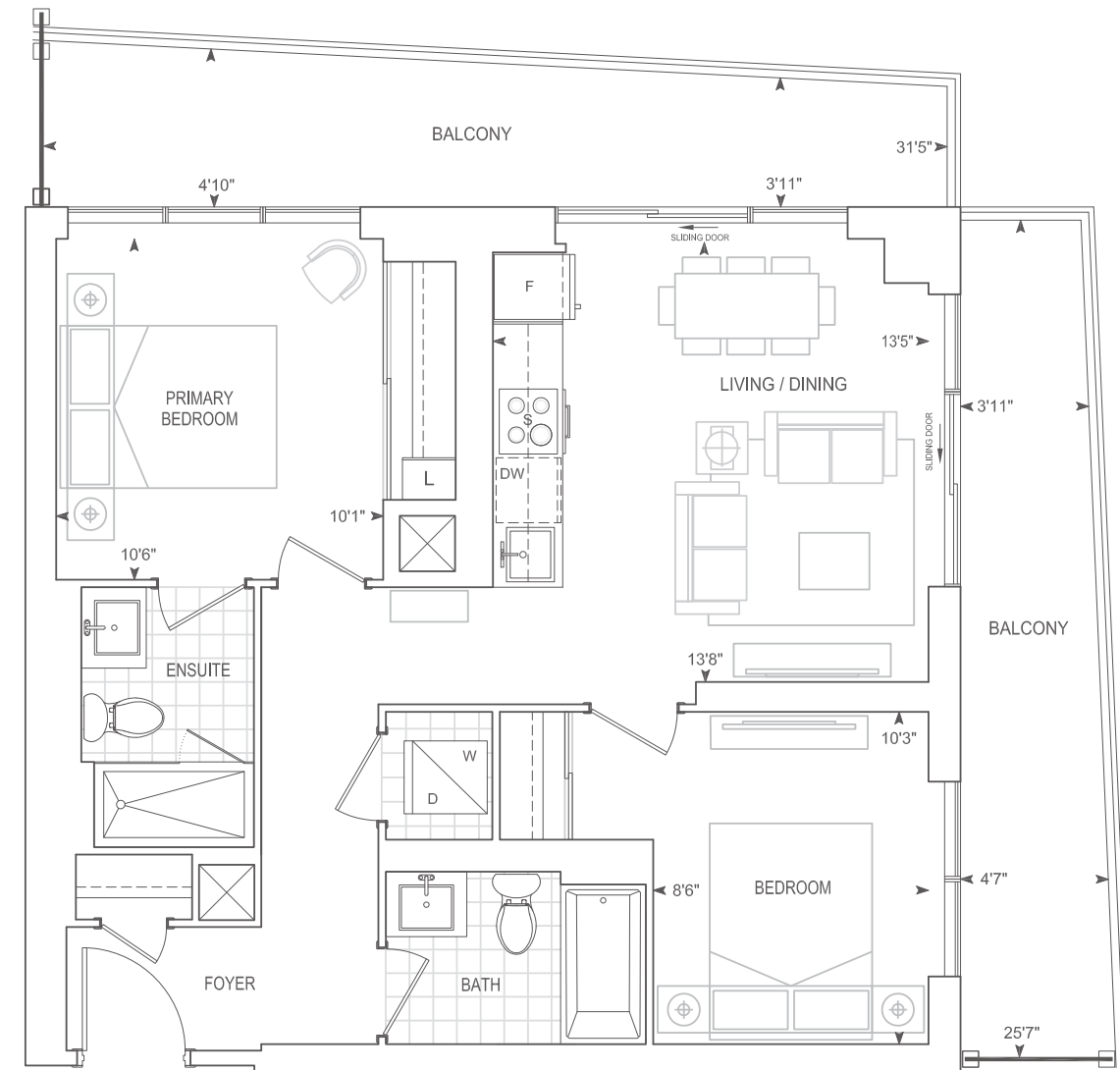
**PENTHOUSE 10' CEILINGS**

Dimensions, specifications, layouts, location of materials and fixtures, tile floor patterns and architectural detailing (including window size and location and door size, location and swing) are approximate only and are subject to change or modifications, without notice. Actual usable floor space varies from stated floor area. Orientation of suite may be reverse and Purchaser agrees to accept same. Balconies, terraces and patios are exclusive use common elements shown for display purposes only and location and size are subject to change without notice. All illustrations are artist concept only. The provisions of Schedule "X" of this Agreement, including Section 6 and 38 apply to this Schedule. E. & O.E. May 2023

Exterior 227 sq.ft. Interior 756 sq.ft. Total 983 sq.ft.

# C756 PH

## 2 BEDROOM



**PENTHOUSE 10' CEILINGS**

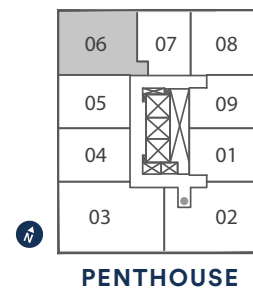
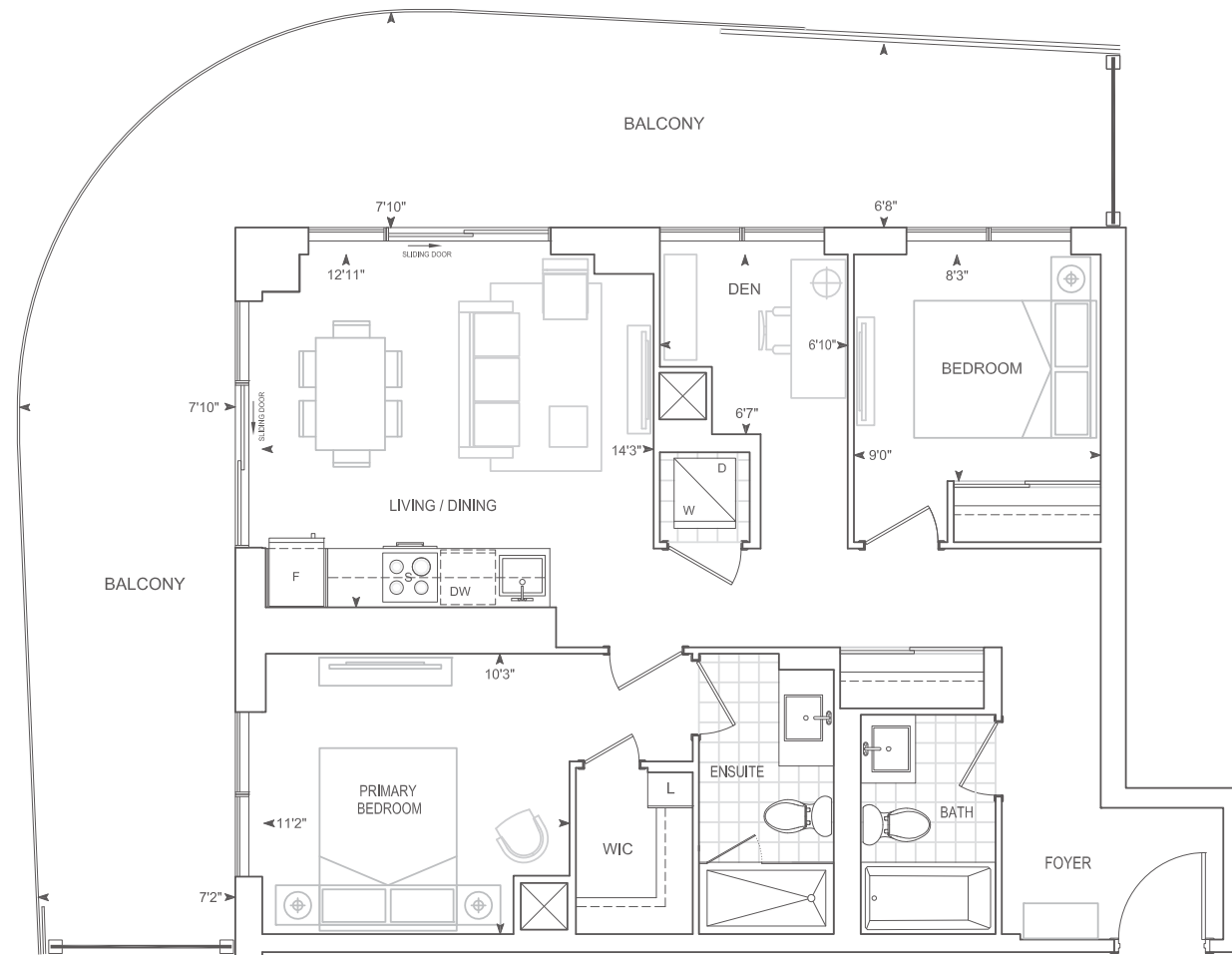
Dimensions, specifications, layouts, location of materials and fixtures, tile floor patterns and architectural detailing (including window size and location and door size, location and swing) are approximate only and are subject to change or modifications, without notice. Actual usable floor space varies from stated floor area. Orientation of suite may be reverse and Purchaser agrees to accept same. Balconies, terraces and patios are exclusive use common elements shown for display purposes only and location and size are subject to change without notice. All illustrations are artist concept only. The provisions of Schedule "X" of this Agreement, including Section 6 and 38 apply to this Schedule. E. & O.E. May 2023



# D880 PH

## 2 BEDROOM + DEN

Exterior 450 sq.ft. Interior 880 sq.ft. Total 1,330 sq.ft.



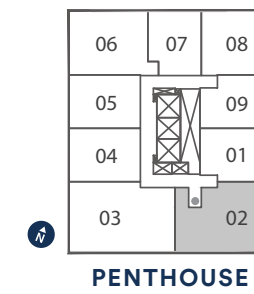
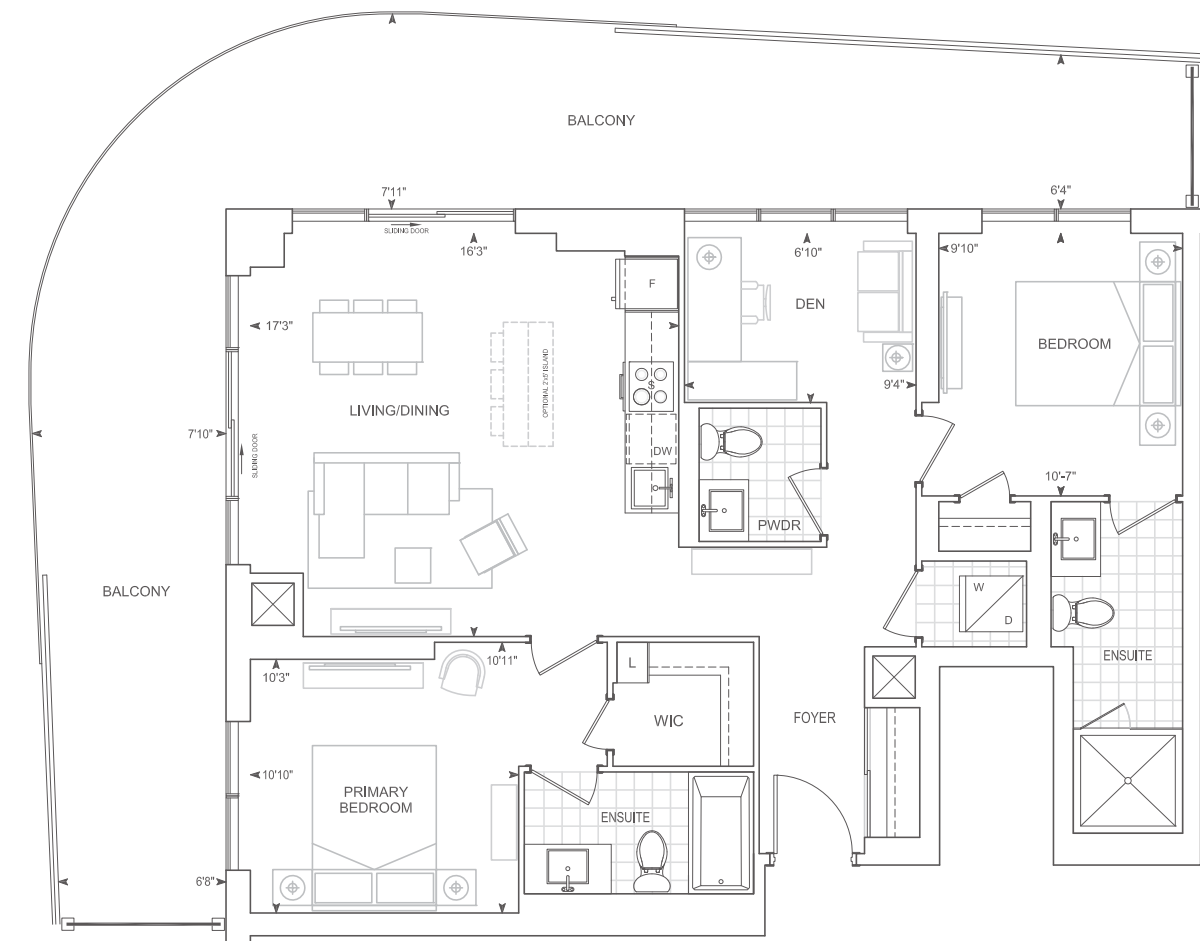
**PENTHOUSE 10' CEILINGS**

Dimensions, specifications, layouts, location of materials and fixtures, tile floor patterns and architectural detailing (including window size and location and door size, location and swing) are approximate only and are subject to change or modifications, without notice. Actual usable floor space varies from stated floor area. Orientation of suite may be reverse and Purchaser agrees to accept same. Balconies, terraces and patios are exclusive use common elements shown for display purposes only and location and size are subject to change without notice. All illustrations are artist concept only. The provisions of Schedule "X" of this Agreement, including Section 6 and 38 apply to this Schedule. E. & O.E. May 2023

Exterior 501 sq.ft. Interior 1,062 sq.ft. Total 1,563 sq.ft.

# D1062 PH

## 2 BEDROOM + DEN



**PENTHOUSE 10' CEILINGS**

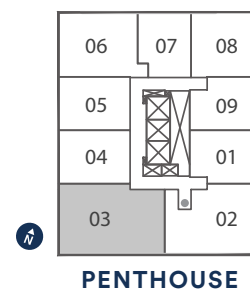
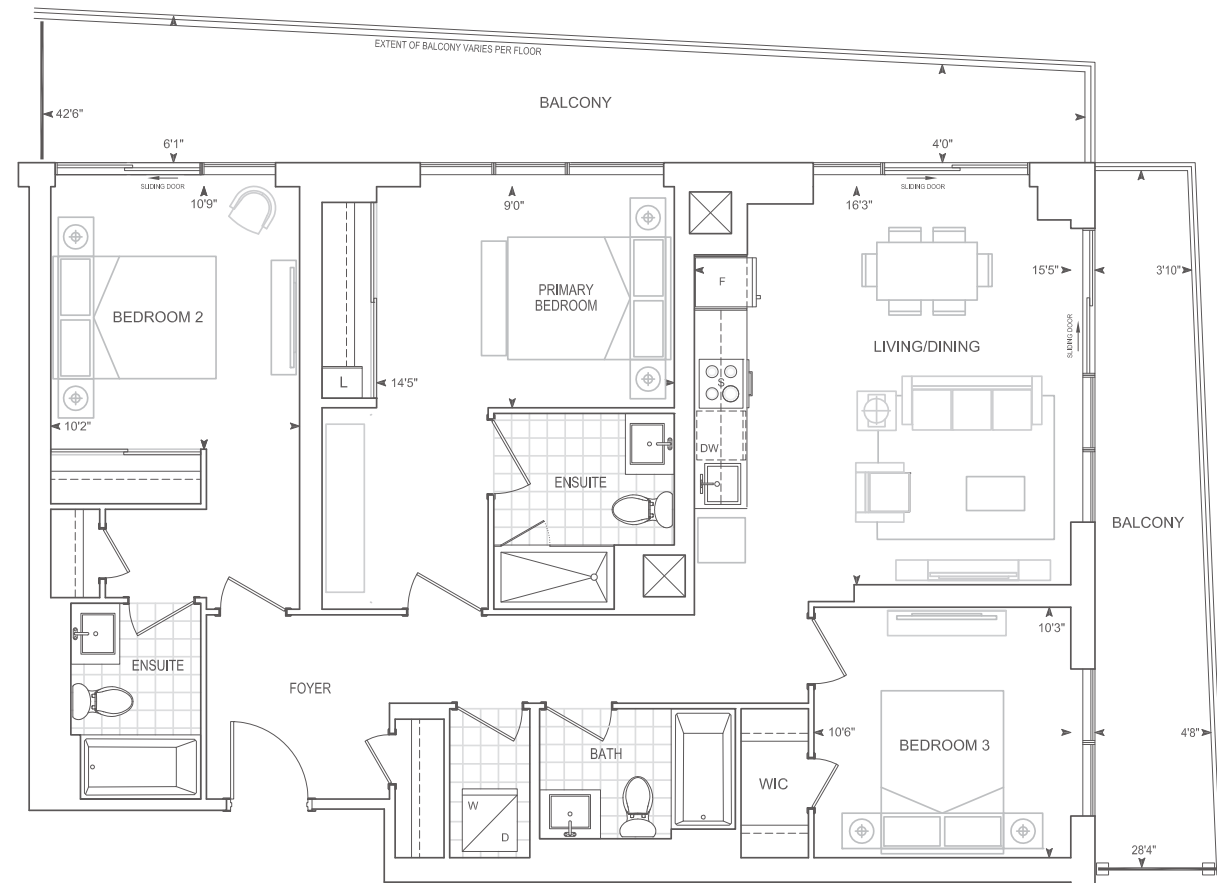
Dimensions, specifications, layouts, location of materials and fixtures, tile floor patterns and architectural detailing (including window size and location and door size, location and swing) are approximate only and are subject to change or modifications, without notice. Actual usable floor space varies from stated floor area. Orientation of suite may be reverse and Purchaser agrees to accept same. Balconies, terraces and patios are exclusive use common elements shown for display purposes only and location and size are subject to change without notice. All illustrations are artist concept only. The provisions of Schedule "X" of this Agreement, including Section 6 and 38 apply to this Schedule. E. & O.E. May 2023

# E1227-BF PH

Exterior 321 sq.ft. Interior 1,227 sq.ft. Total 1,548 sq.ft.

## 3 BEDROOM

Barrier Free



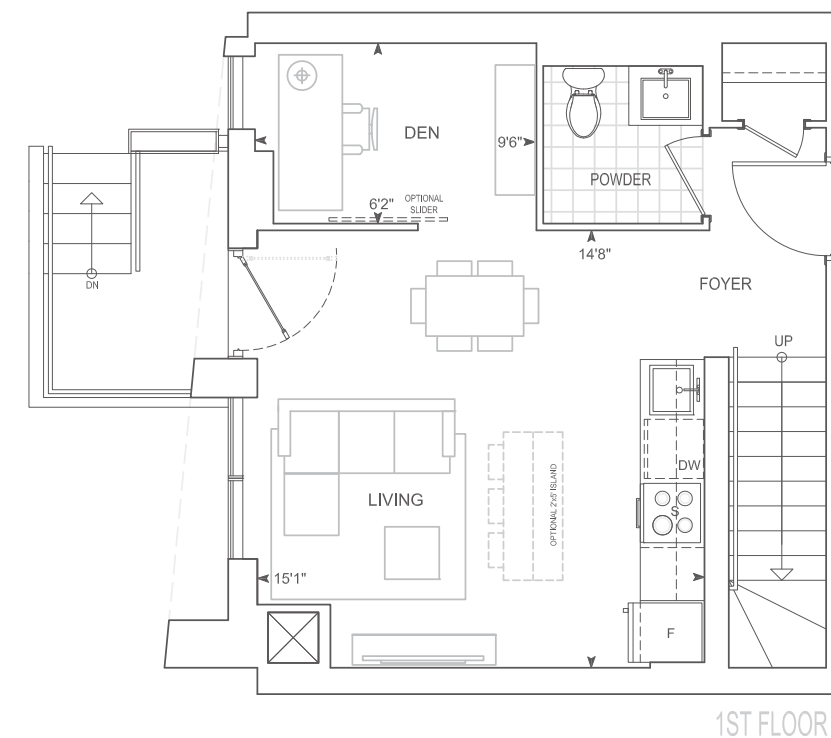
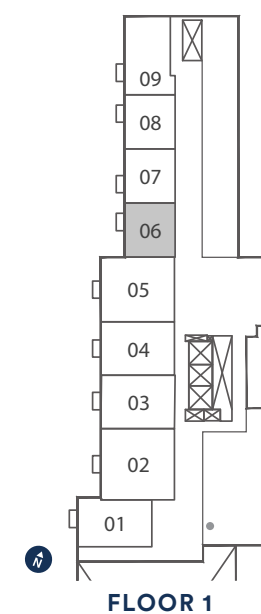
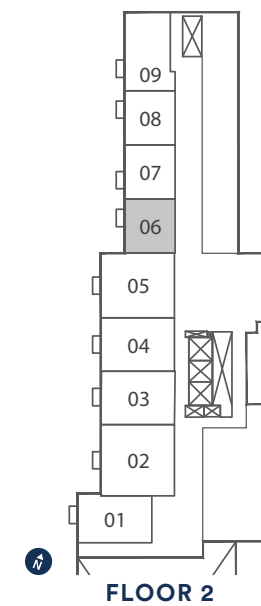
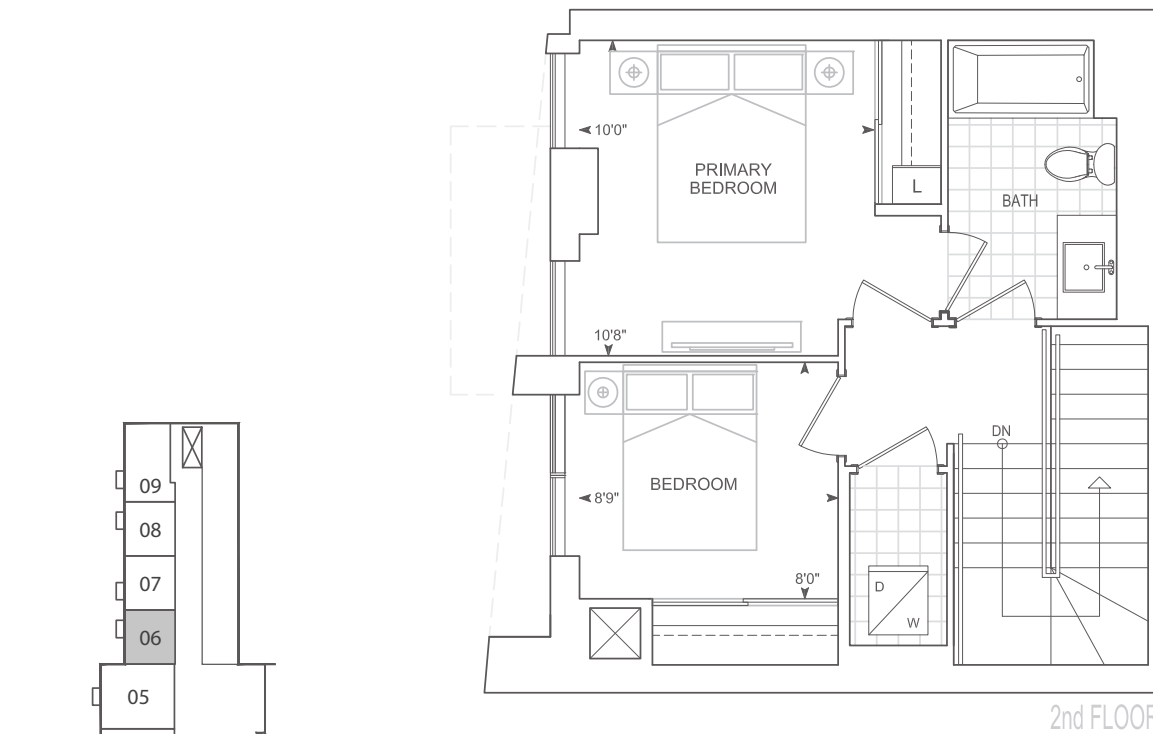
### PENTHOUSE 10' CEILINGS

Dimensions, specifications, layouts, location of materials and fixtures, tile floor patterns and architectural detailing (including window size and location and door size, location and swing) are approximate only and are subject to change or modifications, without notice. Actual usable floor space varies from stated floor area. Orientation of suite may be reverse and Purchaser agrees to accept same. Balconies, terraces and patios are exclusive use common elements shown for display purposes only and location and size are subject to change without notice. All illustrations are artist concept only. The provisions of Schedule "X" of this Agreement, including Section 6 and 38 apply to this Schedule. E. & O.E. May 2023

# TH919

## 2 BEDROOM + DEN

Exterior 23 sq.ft. Interior 919 sq.ft. Total 942 sq.ft.



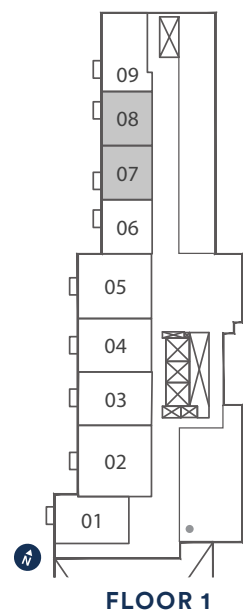
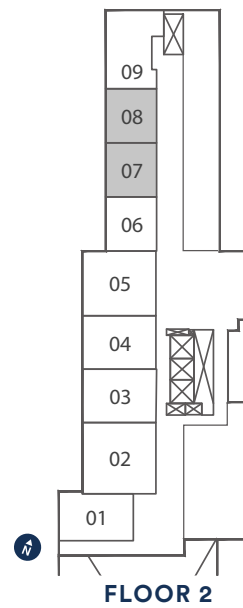
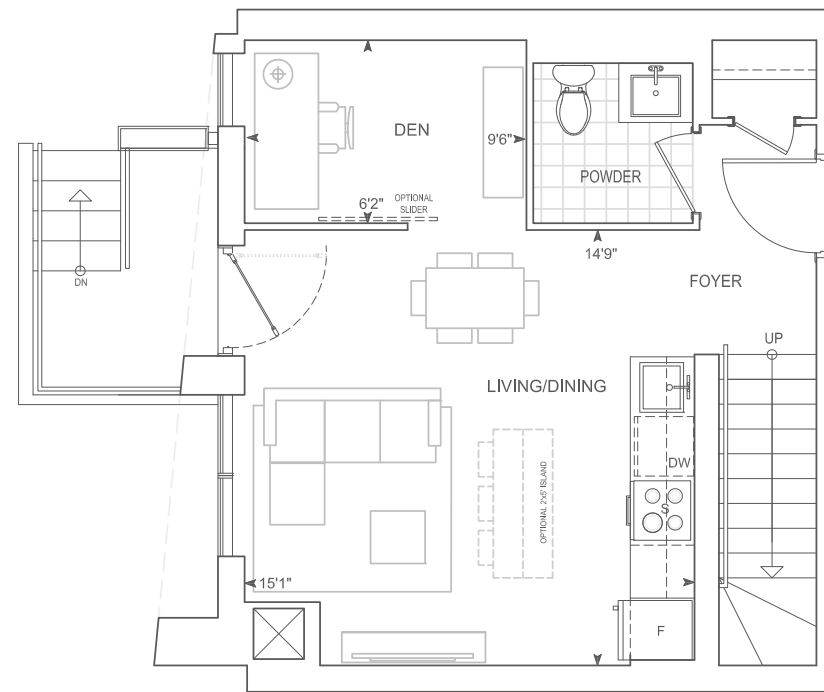
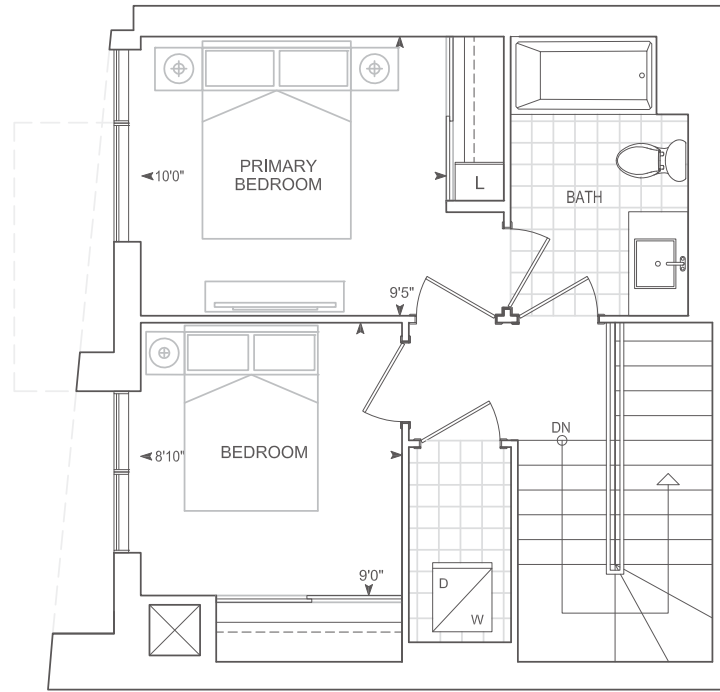
### TOWNHOME 10' CEILINGS FLOOR 1 9' CEILINGS FLOOR 2

Dimensions, specifications, layouts, location of materials and fixtures, tile floor patterns and architectural detailing (including window size and location and door size, location and swing) are approximate only and are subject to change or modifications, without notice. Actual usable floor space varies from stated floor area. Orientation of suite may be reverse and Purchaser agrees to accept same. Balconies, terraces and patios are exclusive use common elements shown for display purposes only and location and size are subject to change without notice. All illustrations are artist concept only. The provisions of Schedule "X" of this Agreement, including Section 6 and 38 apply to this Schedule. E. & O.E. May 2023

# TH920

## 2 BEDROOM + DEN

Exterior 23 sq.ft. Interior 920 sq.ft. Total 943 sq.ft.



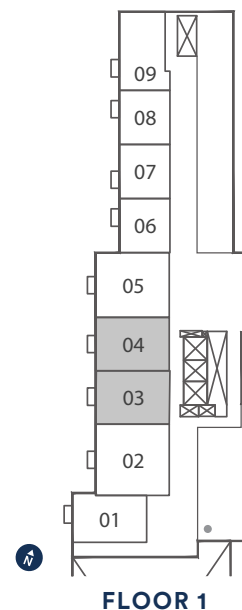
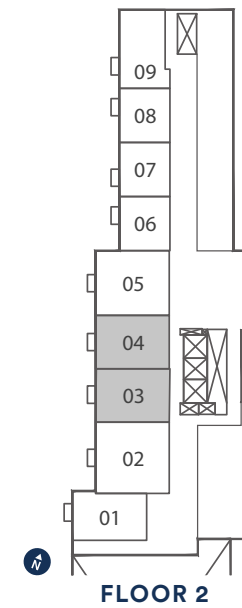
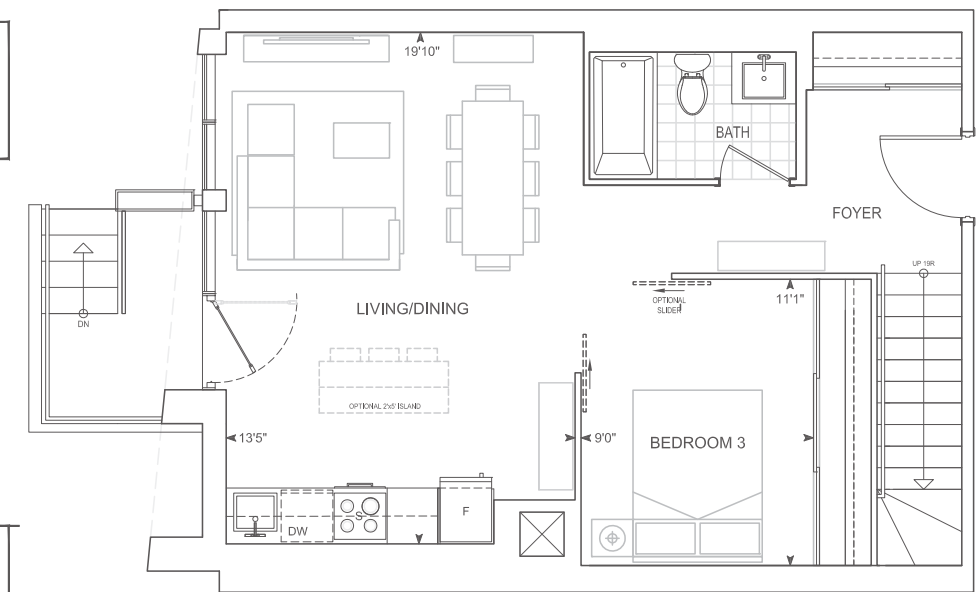
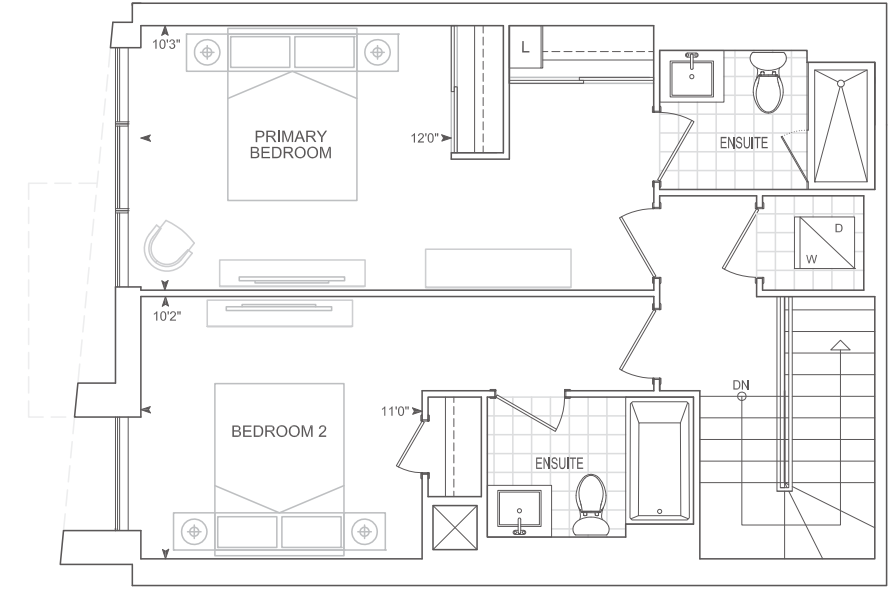
**TOWNHOME 10' CEILINGS FLOOR 1**  
**9' CEILINGS FLOOR 2**

Dimensions, specifications, layouts, location of materials and fixtures, tile floor patterns and architectural detailing (including window size and location and door size, location and swing) are approximate only and are subject to change or modifications, without notice. Actual usable floor space varies from stated floor area. Orientation of suite may be reverse and Purchaser agrees to accept same. Balconies, terraces and patios are exclusive use common elements shown for display purposes only and location and size are subject to change without notice. All illustrations are artist concept only. The provisions of Schedule "X" of this Agreement, including Section 6 and 38 apply to this Schedule. E. & O.E. May 2023

# TH1299

## 3 BEDROOM

Exterior 23 sq.ft. Interior 1,299 sq.ft. Total 1,322 sq.ft.



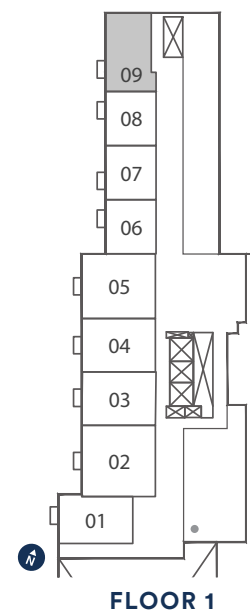
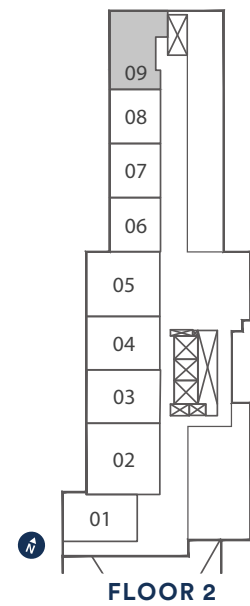
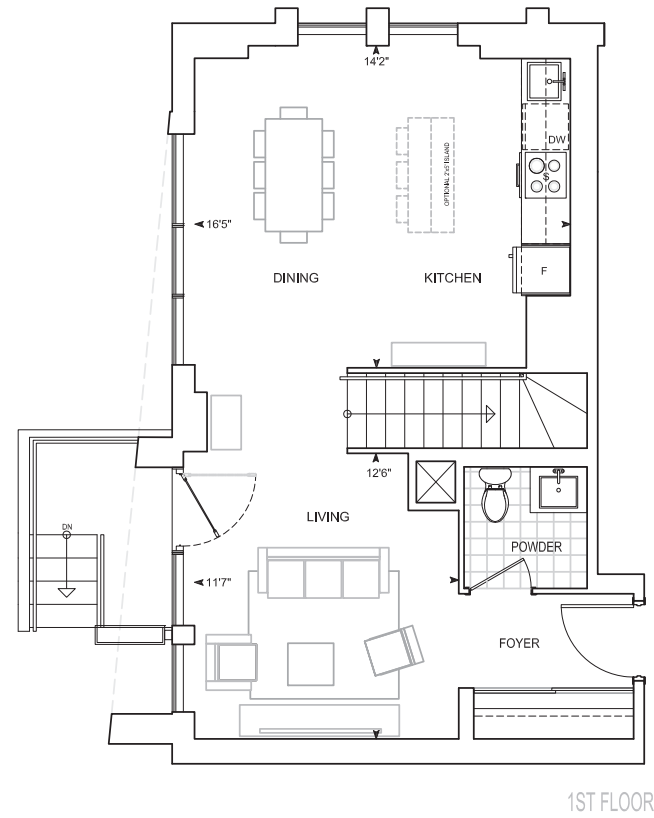
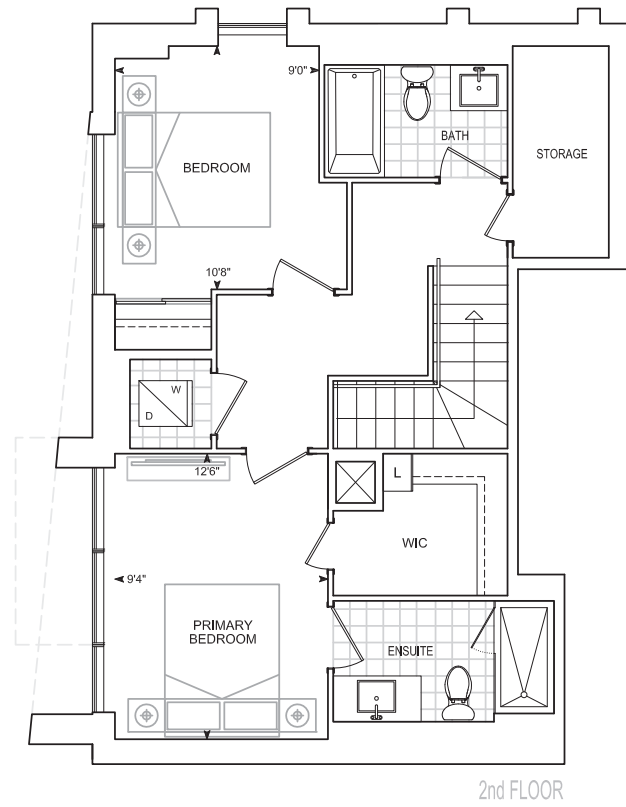
**TOWNHOME 10' CEILINGS FLOOR 1**  
**9' CEILINGS FLOOR 2**

Dimensions, specifications, layouts, location of materials and fixtures, tile floor patterns and architectural detailing (including window size and location and door size, location and swing) are approximate only and are subject to change or modifications, without notice. Actual usable floor space varies from stated floor area. Orientation of suite may be reverse and Purchaser agrees to accept same. Balconies, terraces and patios are exclusive use common elements shown for display purposes only and location and size are subject to change without notice. All illustrations are artist concept only. The provisions of Schedule "X" of this Agreement, including Section 6 and 38 apply to this Schedule. E. & O.E. May 2023

# TH1315

## 2 BEDROOM

Exterior 23 sq.ft. Interior 1,315 sq.ft. Total 1,338 sq.ft.



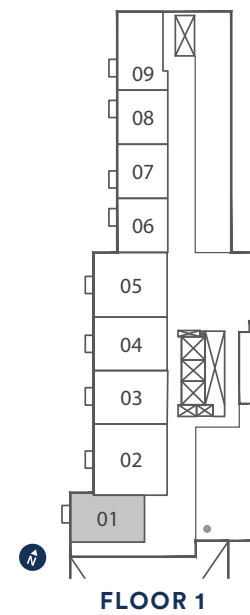
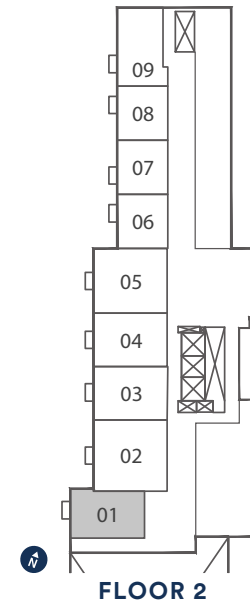
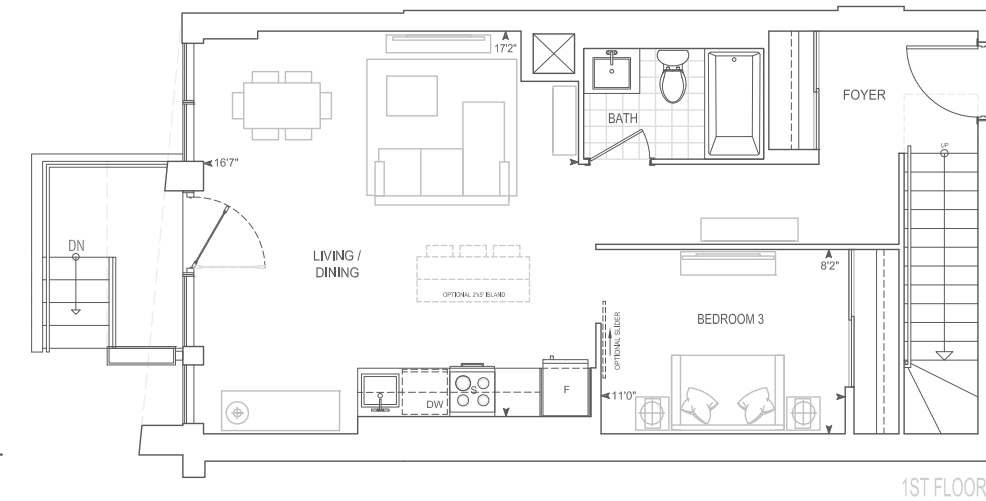
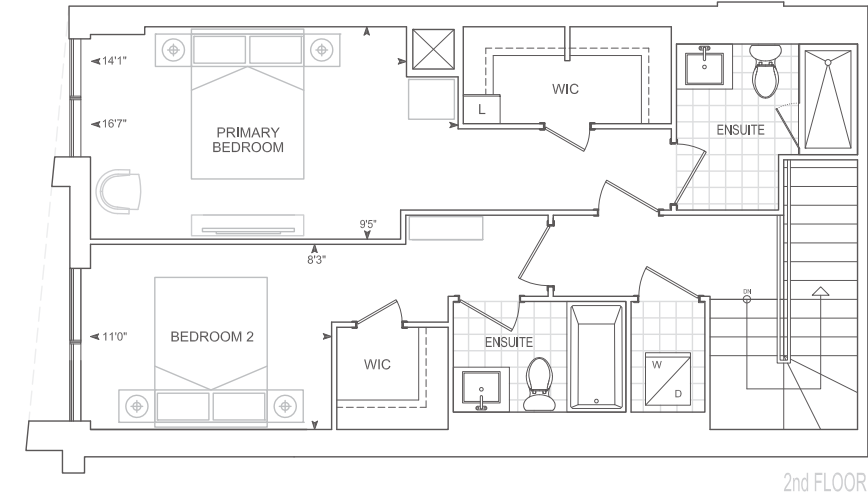
**TOWNHOME 10' CEILINGS FLOOR 1**  
**9' CEILINGS FLOOR 2**

Dimensions, specifications, layouts, location of materials and fixtures, tile floor patterns and architectural detailing (including window size and location and door size, location and swing) are approximate only and are subject to change or modifications, without notice. Actual usable floor space varies from stated floor area. Orientation of suite may be reverse and Purchaser agrees to accept same. Balconies, terraces and patios are exclusive use common elements shown for display purposes only and location and size are subject to change without notice. All illustrations are artist concept only. The provisions of Schedule "X" of this Agreement, including Section 6 and 38 apply to this Schedule. E. & O.E. May 2023

Exterior 23 sq.ft. Interior 1,405 sq.ft. Total 1,428 sq.ft.

# TH1405

## 3 BEDROOM



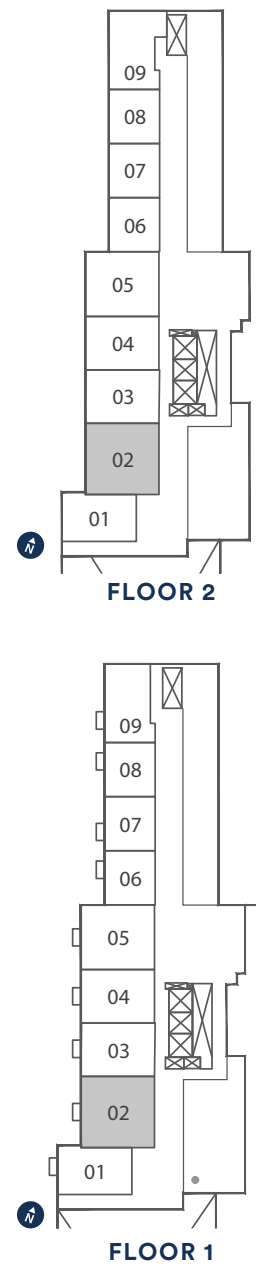
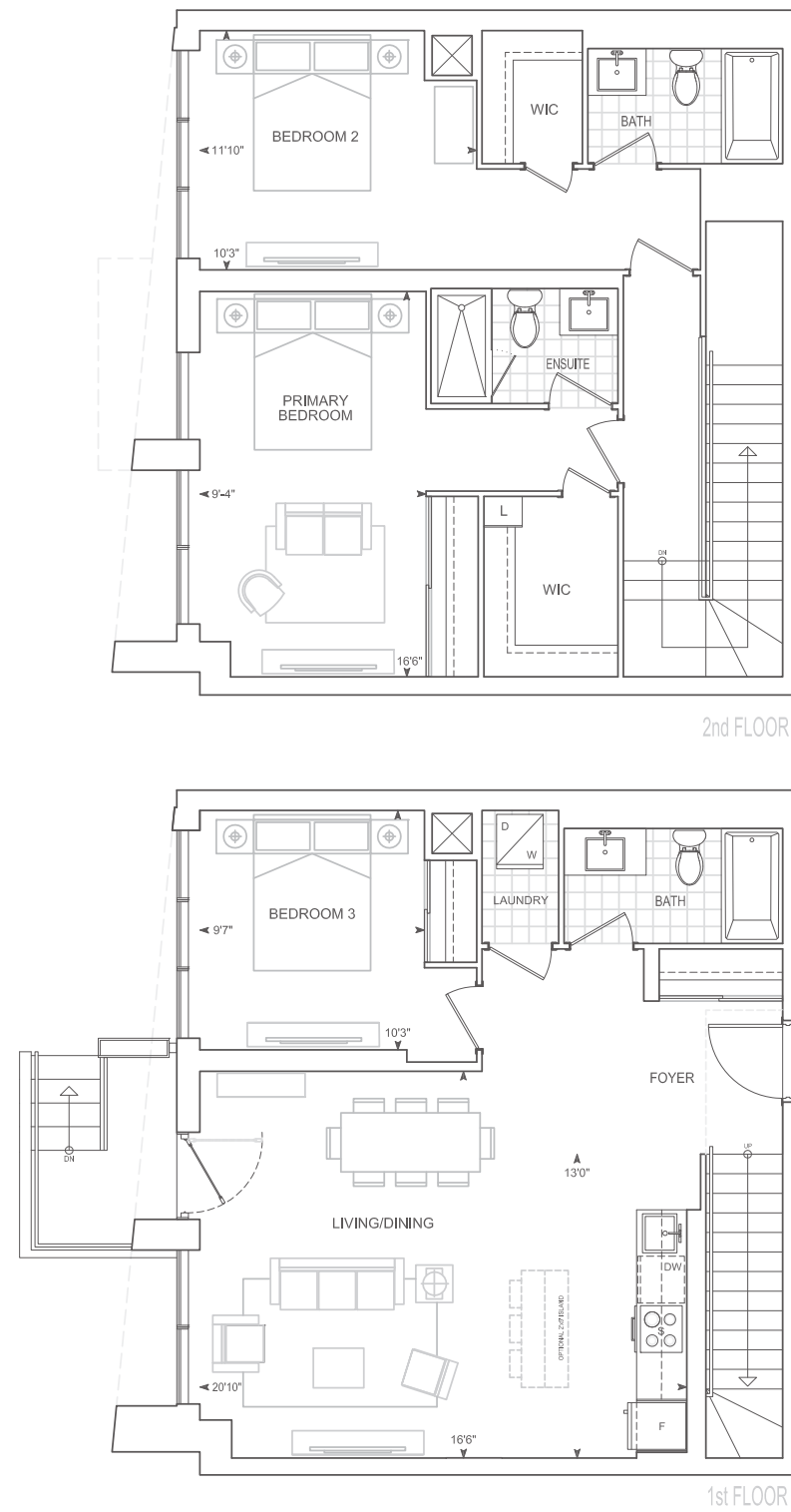
**TOWNHOME 10' CEILINGS FLOOR 1**  
**9' CEILINGS FLOOR 2**

Dimensions, specifications, layouts, location of materials and fixtures, tile floor patterns and architectural detailing (including window size and location and door size, location and swing) are approximate only and are subject to change or modifications, without notice. Actual usable floor space varies from stated floor area. Orientation of suite may be reverse and Purchaser agrees to accept same. Balconies, terraces and patios are exclusive use common elements shown for display purposes only and location and size are subject to change without notice. All illustrations are artist concept only. The provisions of Schedule "X" of this Agreement, including Section 6 and 38 apply to this Schedule. E. & O.E. May 2023

# TH1531

## 3 BEDROOM

Exterior 23 sq.ft. Interior 1,531 sq.ft. Total 1,554 sq.ft.



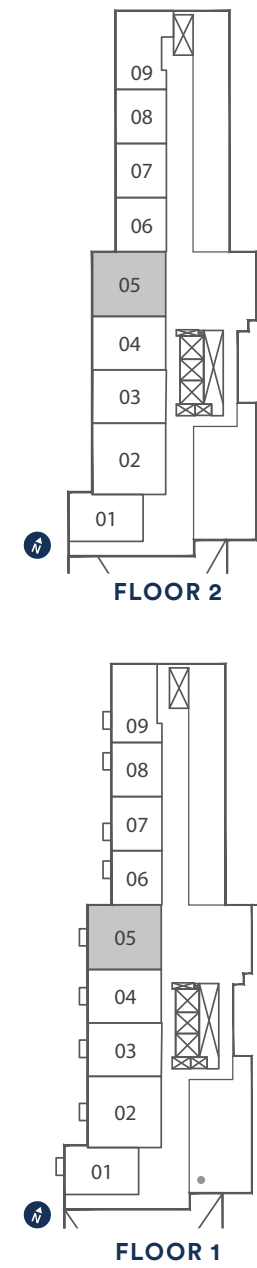
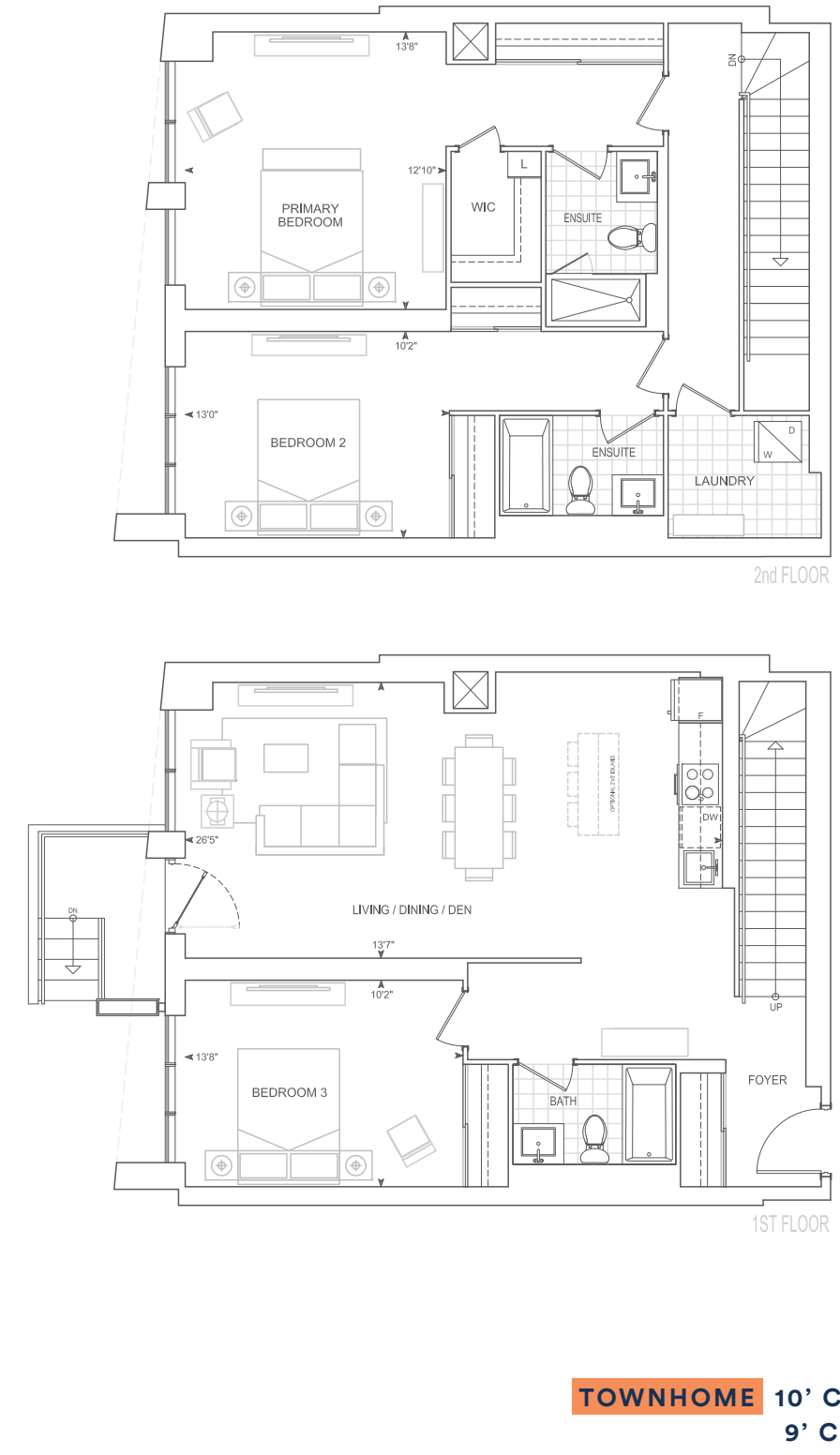
**TOWNHOME 10' CEILINGS FLOOR 1**  
**9' CEILINGS FLOOR 2**

Dimensions, specifications, layouts, location of materials and fixtures, tile floor patterns and architectural detailing (including window size and location and door size, location and swing) are approximate only and are subject to change or modifications, without notice. Actual usable floor space varies from stated floor area. Orientation of suite may be reverse and Purchaser agrees to accept same. Balconies, terraces and patios are exclusive use common elements shown for display purposes only and location and size are subject to change without notice. All illustrations are artist concept only. The provisions of Schedule "X" of this Agreement, including Section 6 and 38 apply to this Schedule. E. & O.E. May 2023

Exterior 23 sq.ft. Interior 1,733 sq.ft. Total 1,756 sq.ft.

# TH1733

## 3 BEDROOM



**TOWNHOME 10' CEILINGS FLOOR 1**  
**9' CEILINGS FLOOR 2**

Dimensions, specifications, layouts, location of materials and fixtures, tile floor patterns and architectural detailing (including window size and location and door size, location and swing) are approximate only and are subject to change or modifications, without notice. Actual usable floor space varies from stated floor area. Orientation of suite may be reverse and Purchaser agrees to accept same. Balconies, terraces and patios are exclusive use common elements shown for display purposes only and location and size are subject to change without notice. All illustrations are artist concept only. The provisions of Schedule "X" of this Agreement, including Section 6 and 38 apply to this Schedule. E. & O.E. May 2023

# SKYVISION



## Digital Door Lock

Easily access your suite using your smartphone app or a unique passcode. Allow your guests to freely come and go by providing them secure access.



## In-Suite Wall Pad

This digital display allows you to easily interact with your suite and community. Create and set 'scenes' for different modes, such as morning, evening, or away by controlling your suite temperature and lights (optional) and blinds (optional). View designated community cameras, take pictures of suspicious activity, and use the live one-way video to view visitors and grant them access.

## Smart Light Switch

Your suite includes one smart light switch.



## Doorbell Camera (For Townhomes Only)

Enjoy peace of mind knowing your suite includes self-monitored security system. Use your wall pad or smartphone app to see who's outside when there is a ring at your door.

## Smoke Alarm & Flood Sensor

Your suite is equipped with an integrated smoke alarm and flood sensor that will alert you in case of an emergency on your wall pad or smartphone.



# SMART IS THE NEW STANDARD

## ADDITIONAL FEATURES



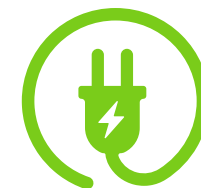
### A Connected Community

Be part of a community across one app experience. Stay up to date with community messaging, access community calendars, and book shared amenities.



### Virtual Mall

Stay connected to your local shops for exclusive deals and offerings in your community.



### Electric Vehicle Charging

Use your mobile app to see available charging stations in your community for your electric vehicle.



### Community Security

View designated community cameras, and use live, one-way video to view and grant access to visitors.



**PRINCESS MARGARET  
LOTTERY HOME**  
King City, ON



**330 RICHMOND**  
Toronto, ON



**GEORGIAN ESTATE  
COLLECTION**  
Oakville, ON

# The People's Builder Since 1967

Since 1967, Greenpark Group has built over 82,000 homes and condos. Our high-rise success has been defined by impressive architecture, luxury finishes and intelligently designed suites and amenities. These condos are built to stand the test of time. We are proud to continue that tradition from one generation to the next.

\*artist's impression



**DUNWEST  
CONDOS**  
Oakville, ON

\*artist's impression



**THE FIFTH AT  
CHARISMA**  
Vaughan, ON



\*artist's impression



**ELEMENTS**  
Milton, ON

\*artist's impression



**SHAREWELL**  
Vaughan, ON

**TRINITY POINT**

## Our Story

As a division of Greenpark Group, Trinity Point's experienced professionals have honed their craft with the country's leading developers and homebuilders. Every community by Trinity Point is a proud testament to their ability to deliver the highest quality and craftsmanship to buyers from all walks of life. At Trinity Point, we use our core values in our approach to building, beginning with a vision for the finished home, mid-rise, high-rise, commercial or office space. Our history of excellence allows our team to seamlessly integrate tried-and-true practices with contemporary ideas which are set to move the industry forward.

\*artist's impression



**KINGSMOOR**  
Woodbridge, ON

**RED OAKS**  
Richmond Hill, ON



\*artist's impression

\*artist's impression



**PLATFORM 68**  
Markham, ON