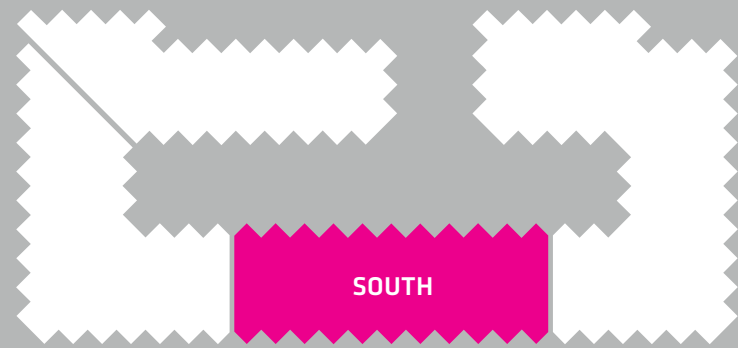




KING STREET WEST





## INTRODUCTION

The contents of this book will best be understood if read in conjunction with the master KING Toronto book where we delve into the origins of the project, how it fits into the surrounding context and the overarching ambitions that we have for the project. On completion of the master book, we have put together a separate book for each of the four mountains of KING Toronto. Because of the unique characteristics of this project, it does not lend itself well to being summarized or condensed so please bear with us. KING Toronto really is, in every respect, a project that is all about its unique and fine-grain characteristics. The lobbies for each of the four mountains (North, East, West and South) draws from different design inspiration and surprisingly 80% of the homes within the project are unique.

What Moshe Safdie was trying to accomplish with Habitat 67 was to use architecture as a means to create community. We are trying to achieve the same primary goal, but at the same time allowing the individual resident to express their individuality. On one hand, we are embracing the idea of bringing people together into a real community of like-minded residents who amongst other characteristics, share an interest in great architecture and a love for this wonderful neighbourhood. On the other hand, we are recognizing that every individual wants to maintain what makes us unique and to create the circumstances to allow this self expression to blossom.

When we gave Bjarke Ingels and his team at BIG the original design brief, it is these two objectives that were at the core of what we wanted to achieve. Another element of the design brief was the idea of using the modernity of the form, in this case the four mountain peaks, to compliment and celebrate the beautiful historic buildings that we have been blessed with on the site, but never to mimic them. Similarly, the materiality of the glass blocks was chosen to compliment and celebrate the historic brick and beam buildings.

To layer on top of this, the mandate that we gave to our passionate landscape architect, Marc Ryan from Public Work, was to bring as much nature back into the city as possible and to strengthen one of the best characteristics of this neighbourhood of King West – a neighbourhood characterized by diverse streets, laneways and courtyards – its fine grain typology.

The interior architecture for this project, led by Francesca Portesine from BIG, is from the same team that led the design on Vancouver House. It is always advantageous to be able to continue a conversation rather than start one from the beginning. This has allowed us to take the principles of Gesamtkunstwerk that we adopted on Vancouver House and to continue to explore this philosophy here on KING Toronto. I hope that as you flip through the pages of both the master book and this

one, that you see our continued effort to adopt the principles of Gesamtkunstwerk, the Total Work of Art, into as much of this project as we can. Similar to Vancouver House, we are just getting started and we will continue to find opportunities throughout the construction process to strengthen this core principle.

Thank you to our partner Allied and all of the willing collaborators that have allowed us to enjoy this journey.

– Ian Gillespie Founder, Westbank





SUCCI

TIUNK

511

**TABLE OF  
CONTENTS**

<b>WESTBANK</b>	10
<b>INTERIOR ARCHITECTURE</b>	18
<b>FURNISHINGS</b>	102
<b>FLOORPLANS</b>	128





## WE ARE NOT A DEVELOPER

We are not motivated by the same things most developers are. Our priorities are different. Development is just one thing that we do. It affords us other – often more interesting – opportunities.

Our aim is to become a company unlike any other. Diversity is at our heart and is the key to how we set ourselves apart.

We embrace our eclectic nature, broadening our interests, actively pursuing interesting collaborations outside property: art, culture, technology, sustainability, infrastructure, etc.

We very publicly define ourselves through the things we do. Always allying ourselves with those who share our values.

We explain to the world who we are through the things we do.

Westbank goes beyond just creating buildings; we acknowledge the surroundings and the existing community and create a new addition to the space and community that improves and gives back. Ultimately, we aim to create a positive impact on how people live today.

We see the opportunity to claim this holistic approach to development as the essence of our brand and to call it out. Just like Bauhaus created rules and influenced Modernism, Westbank could influence where culture is today and goes tomorrow.





**CULTURE IS OUR CURRENCY**

We are a culture company.

Everything we do serves to propagate culture.

We define our philosophy through collaboration and association.

We invite unique and interesting collaboration between cultural pioneers, showcasing their work, using it to inform and influence our projects.

We take on the role of patron of culture, and distribute it globally.

In doing so, we define ourselves as more than just a real estate company, or a property development company – we become a bank that deals exclusively in cultural transactions, a global force for the exposition and propagation of cultural movements.



The 2016 Serpentine Pavilion  
Bjarke Ingels



400 West Georgia  
Abstract Model  
050



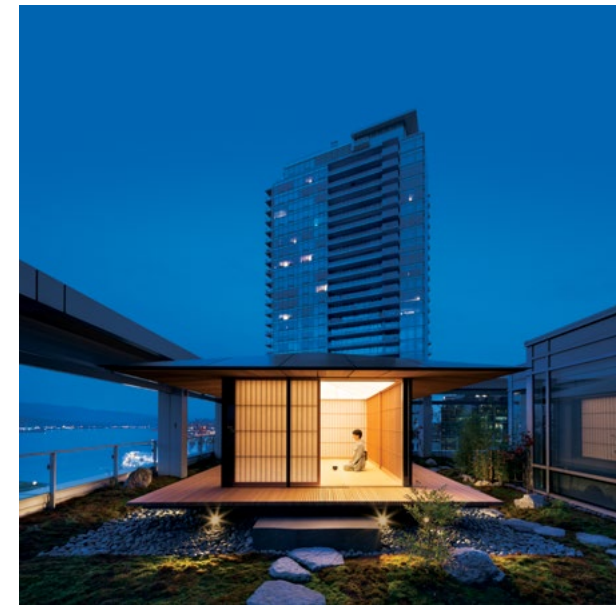
The Floating Teahouse  
Kengo Kuma



16.480,  
Omer Arbel



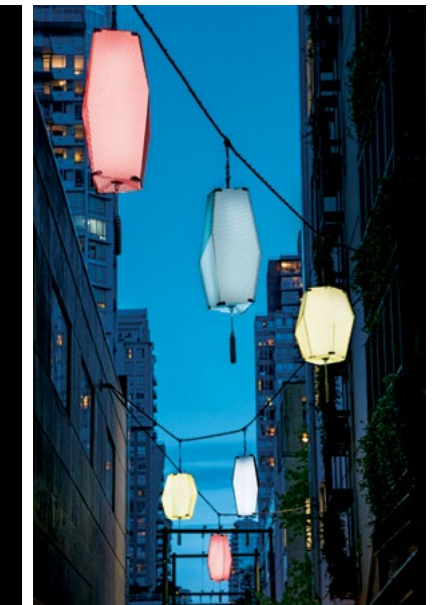
Fashion, 2004  
Alexander McQueen



The Teahouse Pavilion  
Kengo Kuma



The Butterfly Piano  
Venelin Kokalov



Beyond the Sea, Against the Sun  
Martin Boyce

## LEGACY

The relentless pursuit of perfection. This is the one thing that informs everything we do. Whatever sector we are working in. It is this focus that will create our legacy. Everything we build and do has to be the best expression of us.

It could be about making a city more beautiful. Creating cleaner energy to power that city. Better working practises for those that work for and with us, or giving an artist a new audience, opening people's eyes to something they were previously unaware of. Before you embark on any project, and at every point during it – always ask yourself: will what we leave behind be better than what went before?

Then go make it. And never give up.



## INTERIOR ARCHITECTURE

KING Toronto's interiors have been developed in response to the historical nature of the nearby buildings and of the neighbourhood itself. We saw an opportunity to revisit the industrial aesthetic and heritage of historic Toronto and to accentuate it with refined European influences and touches.

Toronto is Canada's largest city – its bustling financial capital and our project – will be an island in this dynamic environment: the new community flowing through the spaces will find calmness and serenity while enjoining the bright, green and permeable outdoor/indoor spaces.

In the same way the architecture gently embraces and enhances the existing buildings, framing them in a cascade of white translucent pixels, the interiors frame the individual experience, with comforting, natural materials and lush vegetation.

From the public areas to the private spaces, we offer a journey through a newly built geological formation: entering through a grand fissure – the atrium; resting/enjoying life in the forest – the courtyards and lobbies; moving through hidden galleries – the corridors; and, finally, reaching the top of the mountain, where a

glistening 'glacier' is waiting to be admired and where each individual home provides a place to settle down and recharge.

The public spaces are conceived as an extension of the residences with lounge areas resembling a living room: welcoming and comfortable, inviting you to stop, wait, read or chat with friends. The selection of furniture and accessories was calculated to bring out the inherent qualities of the living spaces as gathering places.

The refined, industrial aesthetic can be felt in both public and private spaces: while it is a defining element, clearly visible in the former, it is subtler and focused more on the details in the latter.

The materials used in the public areas are mainly aged/blackened metals, corrugated concrete, textured glass in different scales and lush vegetation. Within the residences, service areas such as bathrooms and kitchen are grouped together to form an anchoring block. Clad in a choice of three different materials, this solid, gravitational element forms a counterpoint to the translucency and luminosity of the glass-block façade. The furniture selections for the residences

was made in collaboration with B&B Italia and Maxalto. Through their range of products, we combined timeless Italian design with contemporary innovation. The accessories for homes, as well as furniture for public spaces, are selected predominantly from Scandinavian inspiration, which highlight our design sensibility through the use of light, warm materials and a muted color palette.

When developing interiors, BIG always takes a holistic approach to design, from large scale to small scale, the design intent is carried through to create a complete vision. As a result, we were able to design several custom products, ranging from the suite entry doors, terrazzo floor tiles, wood parquet and kitchens, to a piano for the east atrium.

– *Francesca Portesine* Director of Interior Design, BIG



ABOVE:  
Kitchen Island, BIG  
White Corian

**DESIGN AND ARCHITECTURE ARE THE ART AND SCIENCE OF MAKING SURE THAT OUR CITIES AND BUILDINGS FIT WITH THE WAY WE WANT TO LIVE.**

*– Bjarke Ingels Group*

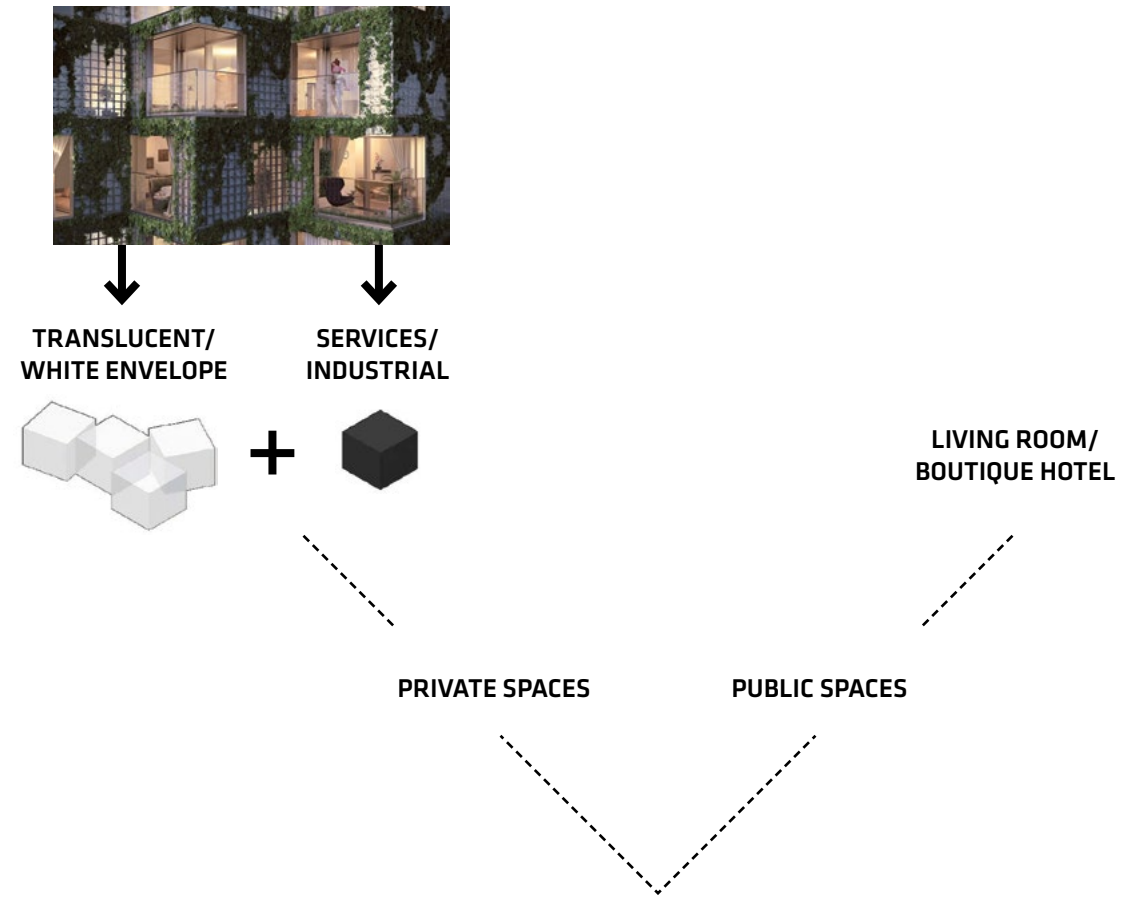


**Francesca Portesine, Interior Architect**

Born in Genova, Italy

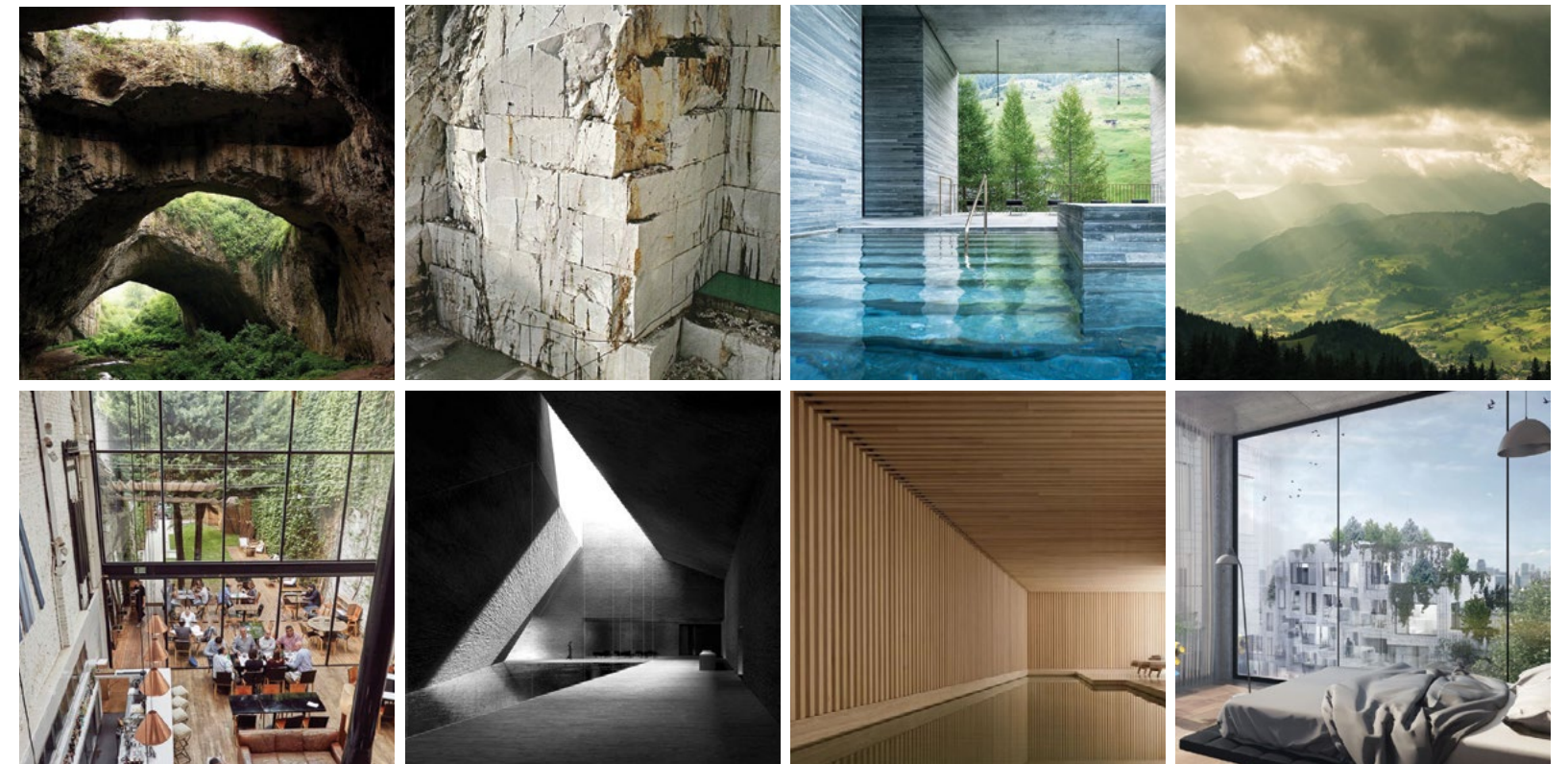
Francesca joined BIG in 2013 as a Senior Designer to lead the interior design team for a 600,000 SF residential tower in Vancouver, Canada. Francesca has previously worked at OMA in Rotterdam, Shenzhen, Hong Kong and New York from 2007 to 2013, at Arata Isozaki & Andrea Maffei Associates in 2009, at Metra et Associés (Atelier Jean Nouvel) from 2006 to 2007, at Fuksas Architecture in Paris from 2004 to 2006, and Ibos & Vitart Architects in Paris in 2004. She has worked on different design processes on both large and small scale projects from Eastern Asia to the Middle East, from Europe to North America. She has been Project Leader and Consultant Coordinator for several projects and she has developed a specialty not only in architecture but also in interior design.

# CONCEPT



REFINED INDUSTRIAL

# INSPIRATION



ATRIUM

CORRIDORS

AMENITIES

HOMES

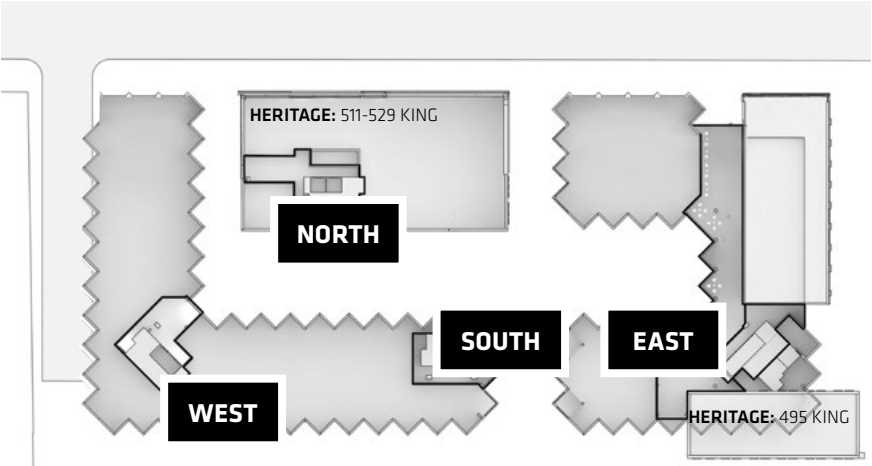
**LOBBY LOCATIONS**

**RESIDENTIAL WELCOMING LOBBIES**



**ABOVE:**  
Axonometric diagram showing  
the ground floor of KING Toronto

**RIGHT:**  
Lobby locations for each of  
the four mountain peaks



# INSPIRATION

## EAST LOBBY



INSPIRATION: REFINED INDUSTRIAL

## WEST LOBBY



INSPIRATION: LIGHT

## NORTH LOBBY



INSPIRATION: HERITAGE

## SOUTH LOBBY



INSPIRATION: GREEN

BELOW:  
View inside the atrium looking  
towards the East welcoming Lobby





BELOW:  
View inside the East atrium looking  
outside towards the courtyard



BELOW:  
View inside the North welcoming Lobby

DUBLIN

NORTH

DUBLIN



BELOW:  
View inside the West welcoming Lobby



OPPOSITE:  
View inside the South  
welcoming Lobby



## AMENITIES

## INSPIRATION

Taking inspiration from the building's mountainous peaks and valleys, KING Toronto will feature a mountain inspired spa and Hammam with a spectacular indoor-outdoor pool, hot tub and spa, along with a gym, outdoor terrace and games/party room.



POOL

BELOW:  
View of a mountain inspired  
pool at KING Toronto



BELOW:  
View looking towards King Street  
at the indoor/outdoor pool.



0  
0  
0





**GAMES AND  
PARTY ROOM**

**BELOW:**  
View inside the games and  
party room



**ELEVATOR LOBBIES, CORRIDORS  
AND SUITE ENTRY DOORS**



The concept for these spaces embodies a similar modern industrial palette as the residences but with an added warmth. The elevator lobbies are clad in a textured wood that emulates the pixelation of the exterior façade juxtaposed by the neutral material palette of the corridors.

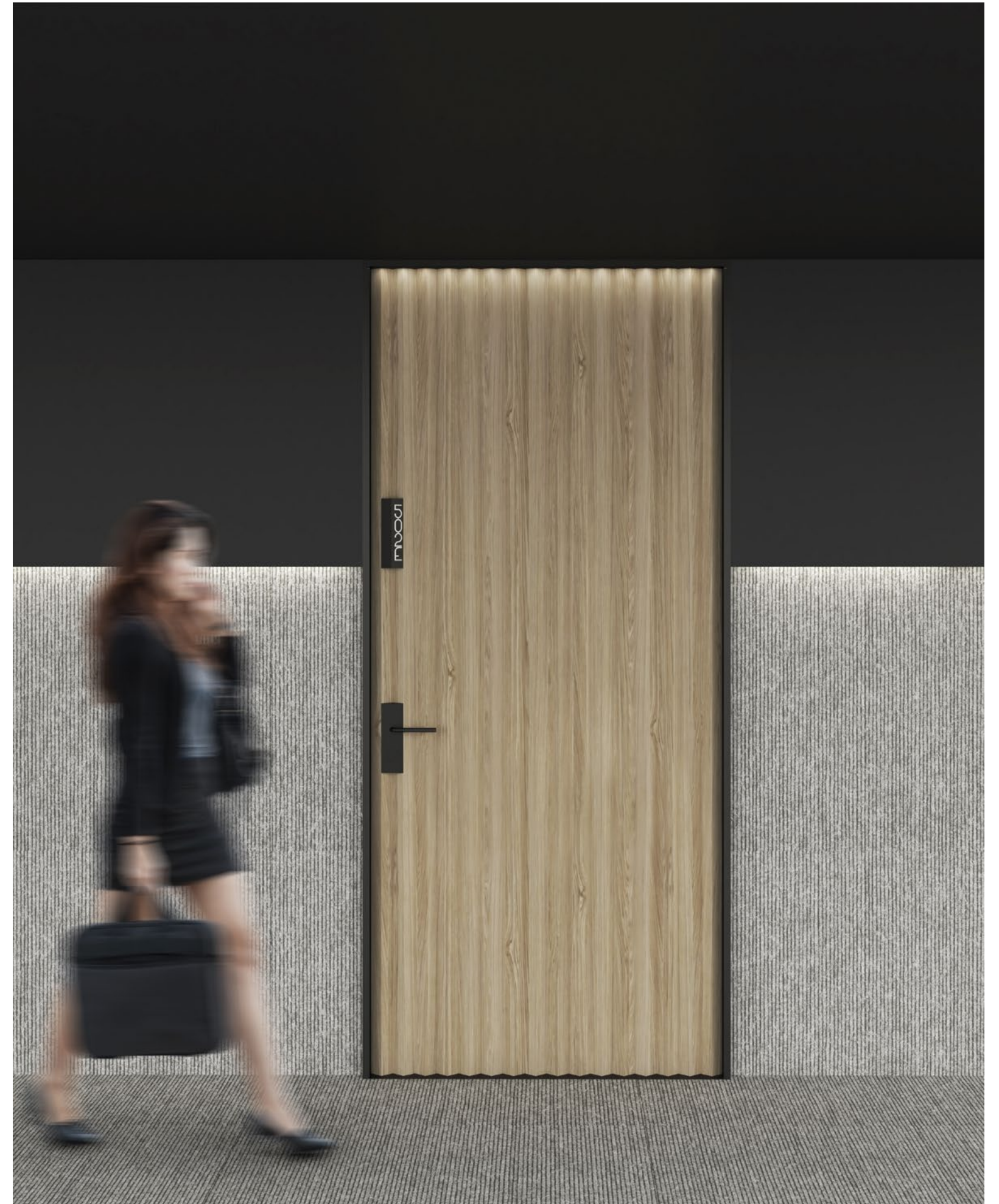
**LEFT:**  
View down the residential corridors  
looking towards the elevator lobby



## SUITE ENTRY DOOR

The suite entry doors will be clad in a solid wood pixelated pattern inspired from the pixelization fo the building façade.

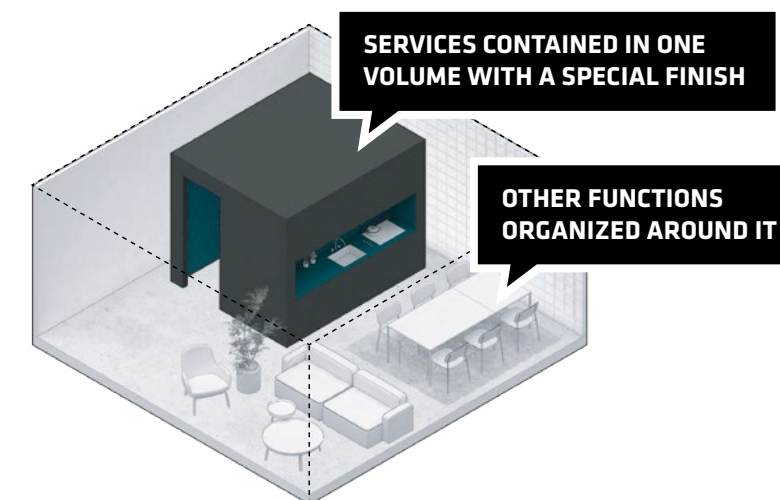
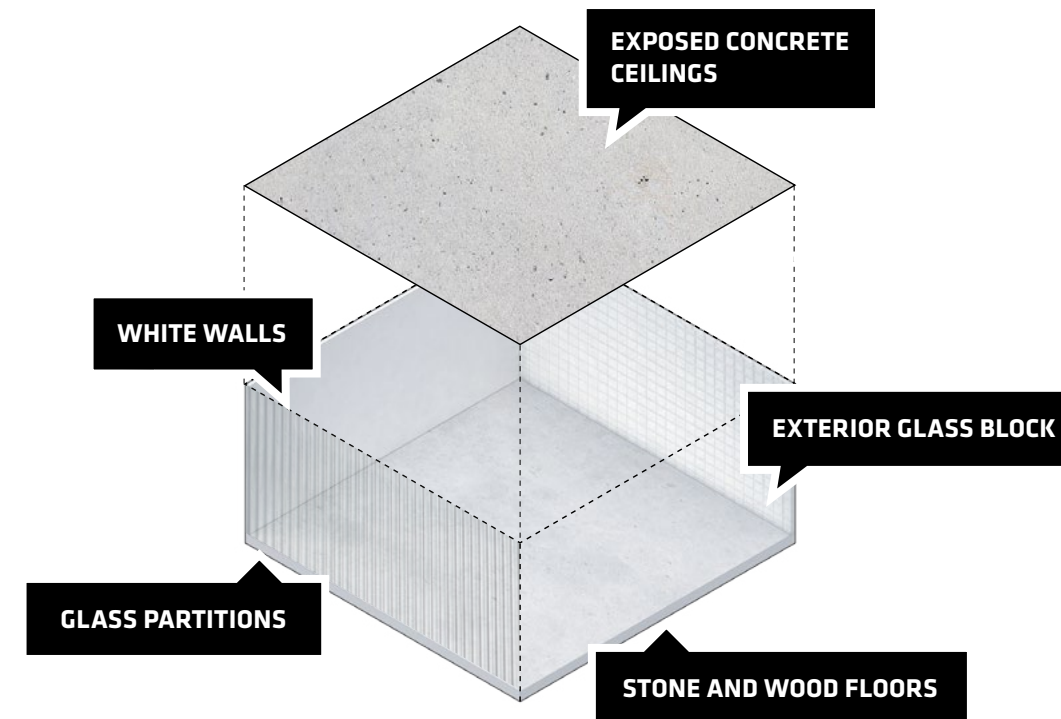
OPPOSITE:  
Pixelated wood suite entry door at  
KING Toronto



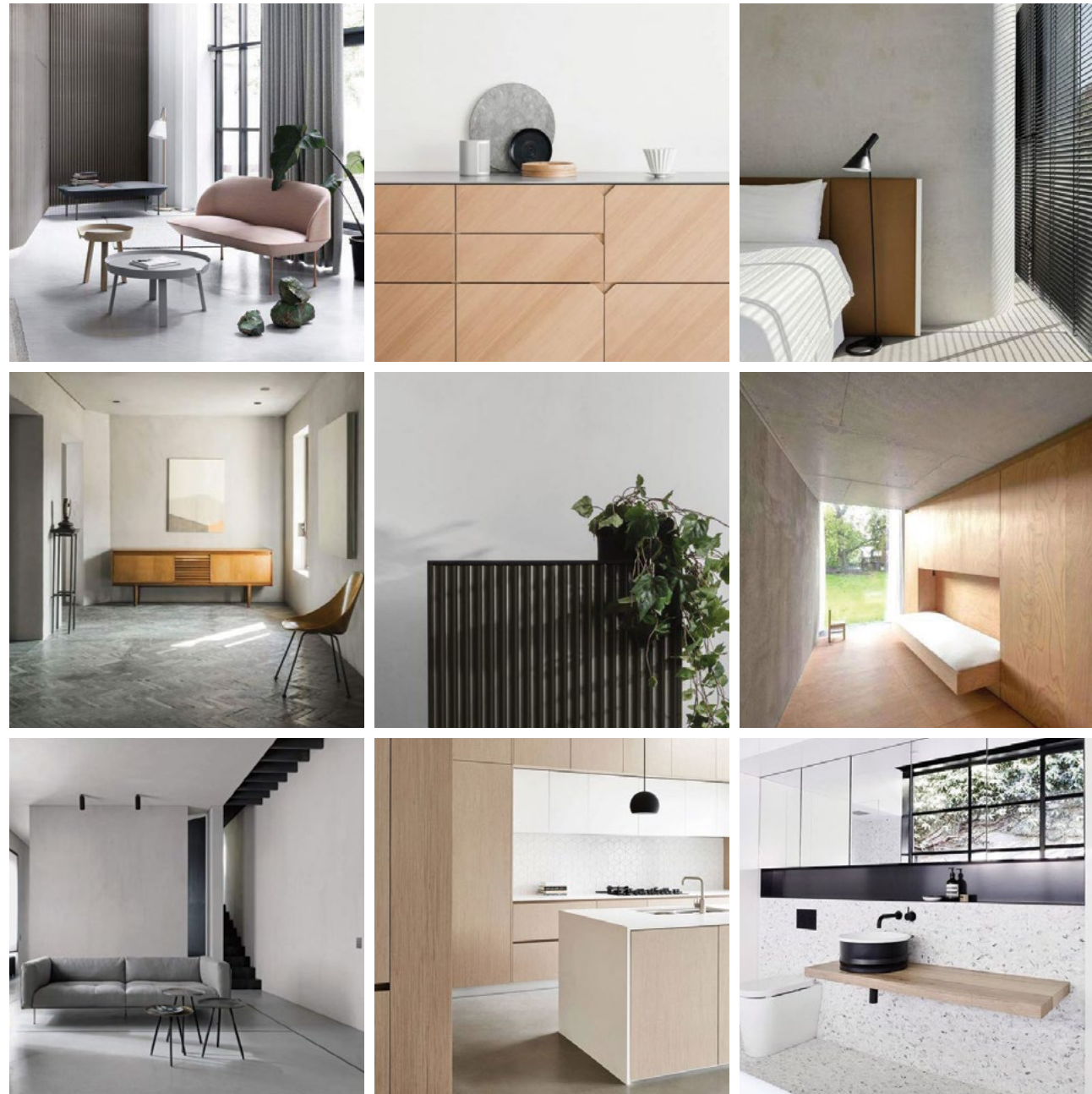
## RESIDENTIAL INTERIORS

## CONCEPT

The material concept for the residences at KING Toronto features a simple industrial modern palette with the kitchen and bathroom being the dominant and anchoring features within the space.



# INSPIRATION



LIGHT



DARK





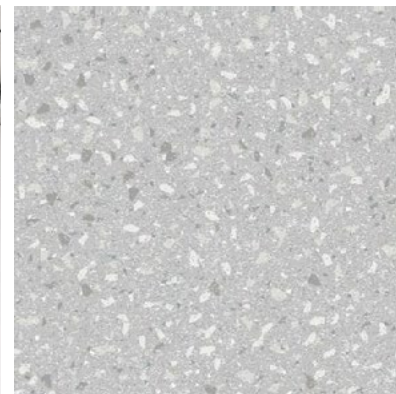




# KITCHEN MATERIALITY

Each kitchen will be clad in a choice of three different materials; white oak wood, matte black laminate and fluted glass. Each of these three options has a different complementing countertop and backsplash materiality of light and dark grey terrazzo and stainless steel. The solid, gravitational element created by the kitchens form a counterpoint to the translucency and luminosity of the glass-block façade.

## WOOD

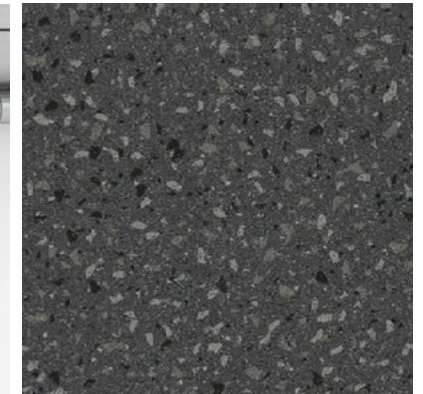


LIGHT GREY  
TERRAZZO NICHE  
AND COUNTERTOP

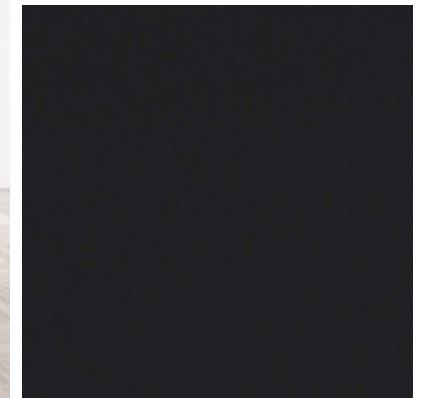


WHITE OAK  
WOOD FACE

## DARK

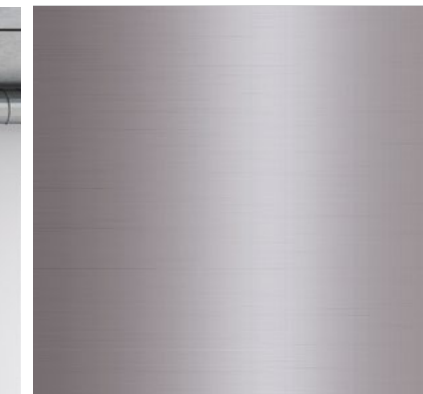


DARK GREY  
TERRAZZO NICHE  
AND COUNTERTOP

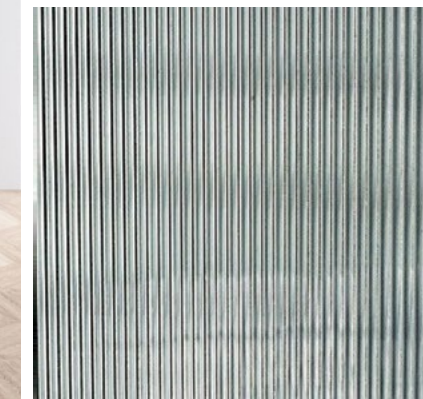


MATTE BLACK FACE

## GLASS



STAINLESS STEEL  
NICHE AND  
COUNTERTOP



FLUTED GLASS  
FACE

## MIELE PURELINE GENERATION 6000

Westbank deals exclusively with Miele, the world's leading high-end appliance manufacturer, who has curated an appliance lineup in keeping with a building of this quality.

Miele PureLine appliances seamlessly flow into the design of a modern kitchen. Jet black glass combined with a striking stainless steel handle presents a balanced harmony, while bold horizontal lines allow for a continuous design aesthetic. The high proportion of glass creates a serene atmosphere, while floating handles engage onlookers to explore PureLine further. Miele's PureLine Generation 6000 sets a new standard for premium appliances.



ABOVE:  
Miele PureLine Generation 6000  
Speed Oven, Wall Oven

# MIELE: 115 YEARS OF EXCELLENCE



**1899**  
In Herzebrock, Germany, Carl Miele (the technician) and Reinhard Zinkann (the salesman), together with 11 employees, four lathes and a drill, found a company to manufacture milk centrifuges and butter churns.

**1900**  
Just one year after the company's inception, milk centrifuges and butter churns are joined on the market by the first Miele washing machine, the "Meteor".

**1904**  
Miele develops its first power-driven washing machine. An "outboard" electric motor supplies the power to move the agitator while a drive belt achieves silent operation, low energy consumption and provides years of service.

**1908**  
Miele moves from Herzebrock to a new factory in Gütersloh. Mr. Miele and Mr. Zinkann are convinced that in order to maintain their quality standards over the long-term, the Miele company must produce all parts and components 'inhouse'.

**1910**  
Miele develops a mechanical laundry wringer that can be driven by hand or run by an electric motor.

**1913**  
Models in full bloom – Forever More, Forever Better. More than 20 new variants of seven basic models of Miele wooden tub washing machines enter the market, expanding the product range to 50.

**1914**  
An electric plug-in for the washing machine changes everything! A builtin electric motor washing machine is introduced in the legendary Miele washing machine 'Number 50m', described at the time as "the role-model in electric washing machines". All future innovations are based on this design.

**1924**  
Miele introduces a bicycle to the market at a new factory in Bielefeld.

**1925**  
The metal drum replaces the wooden tub in Miele washing machines Miele secures its place as the largest washing machine manufacturer in Germany.

**1926**  
Miele introduces milking machines.

**1927**  
The first Miele vacuum cleaner arrives; first the basic "K" model, soon followed by the 'Melior'.

**1929**  
Europe's first electric dishwasher is introduced by Miele.

**1932**  
The first motorized bicycle model is developed and marketed as "a Miele bicycle with balloon tires powered by a Sachs motor".

**1934**  
Miele introduces a retirement pension fund for its employees, including disability pensions and widow benefits.

**1935**  
The second generation, Carl Miele Jr. and Kurt-Christian Zinkann begin working for Miele, now one of the largest companies in its sector in Germany, with over 2000 employees.

**1937**  
First Miele electric spin dryer with centrifugal force design is developed for private households.

**1938**  
Carl Miele dies on Christmas Eve, six months before his 70th birthday. Director C.H. Walkenhorst: "The name Carl Miele should always be a name that inspires us to continue to work in his spirit. We will honour his name. His work shall continue."

**1939**  
On July 14, co-founder Reinhard Zinkann dies at the age of 70. Director Walkenhorst: "We will continue to thank him, even beyond the grave, for what he was to us and this firm that he founded, through his work, through his charity, through his goodness and understanding." Following the deaths of the two founders, their sons Carl Miele Jr. and Kurt Christian Zinkann take the helm.

**1944**  
Air raids destroy production facilities at the Gütersloh plant; Miele's production program has now been reduced to handcarts and ladders.

**1945**  
War is over and rebuilding of the Gütersloh factory begins. In addition, Miele decides to build workers' accommodation, and assists employees in the re-building of their own homes.

**1947**  
Due to a shortage of metals, the woodentub washing machine returns. By year's end, more than 8,000 units have been produced.

**1949**  
Miele's 50th birthday and Miele rewards all employees with a handsome cash bonus, an increase to the employees' pension and retirement funds. Miele factories have been re-built and full production begins in earnest with a workforce of 2500.

**1952**  
Miele develops the space-saving rapid washing 'Machine 75'. The machine automatically fills with cold water through a hose attached to a stopcock – and the water is heated internally.

**1953**  
Miele washing 'Machine 307' is introduced with a horizontal-axis drum with an electric boiler featuring gentle treatment of laundry, effective and energy-saving operation and long life reflecting the firm's high quality standards.

**1954**  
No need to pedal! The Miele motorbike model is the widely known '98' with a Sachs motor. The firm is now the largest manufacturer of washing machines, and the second largest manufacturer of twowheel bicycles and motorbikes.

**1956**  
The Miele automatic 'Number 702' washing machine sets the future of clothes washing and care. The Gütersloh factory is expanded to include manufacture of 18,000 individual parts and components in-house for all Miele products.

**1958**  
The introduction of the Miele electric tumble dryer.

**1959**  
Miele automatic washing machines travel around the world – keeping clothing clean on passenger liners, freight ships, training and research ships, and tankers.

**1960**  
Miele makes a historic decision: discontinuing bicycle and motorbike production at the Bielefeld factory, with Miele's future directed to kitchen and domestic appliances. The fully automatic 'Number G-10' dishwasher is introduced.

**1965**  
Miele opens a fifth factory in Lehrte to satisfy the production demands for its products.

**1968**  
Design innovations, advances in electronic control systems and an expanding group of products directed toward the domestic market continue to separate the Miele brand. Miele's workforce tops 9,000 employees in Germany.

**1969**  
Miele expands its domestic kitchen focus and begins design and production of cooking appliances. The 250,000th dishwasher rolled-off the assembly lines at Bielefeld.

**1970**  
With advances in production automation and electronics and the 'Immer Besser' standards, Miele transitions to automation in production, warehousing, and distribution.

**1975**  
Miele introduces a full line of leadingedge built-in appliances including cookers, ovens, dishwashers, refrigerators, and freezers.

**1987**  
The first Miele Museum in Gütersloh, Germany includes one of the legendary Miele K1 cars dating back to 1913, discovered in Norway.

**1988**  
Since 1980, water consumption for Miele dishwashers has decreased by 40 percent and energy consumption has fallen by 30 percent.

**1992**  
Miele increases its investment in employee training to further the 'Immer Besser' philosophy.

**1998**  
Miele product line expands: steam ovens, built-in coffee machines, hood fans, gas and electric cooktops, induction cooktops, and warming drawers.

**1999**  
100 years of Miele and 'Forever Better'! Miele is the 'most valued brand' in German and European electronic retail markets. Miele's international expansion continues with subsidiaries in more than 40 countries.

**2000**  
Miele is awarded the German Marketing Prize – the highest honour for excellence. Water and energy consumption by Miele appliances continues to be reduced – by about 70 percent overall since 1980.

**2005**  
Miele introduces 'MasterCool' refrigeration and wine storage, establishing a new standard refrigeration for the domestic market.

**2014**  
Miele introduces 'Generation 6000'. These technically advanced products set new performance and aesthetic standards for premium appliances worldwide.



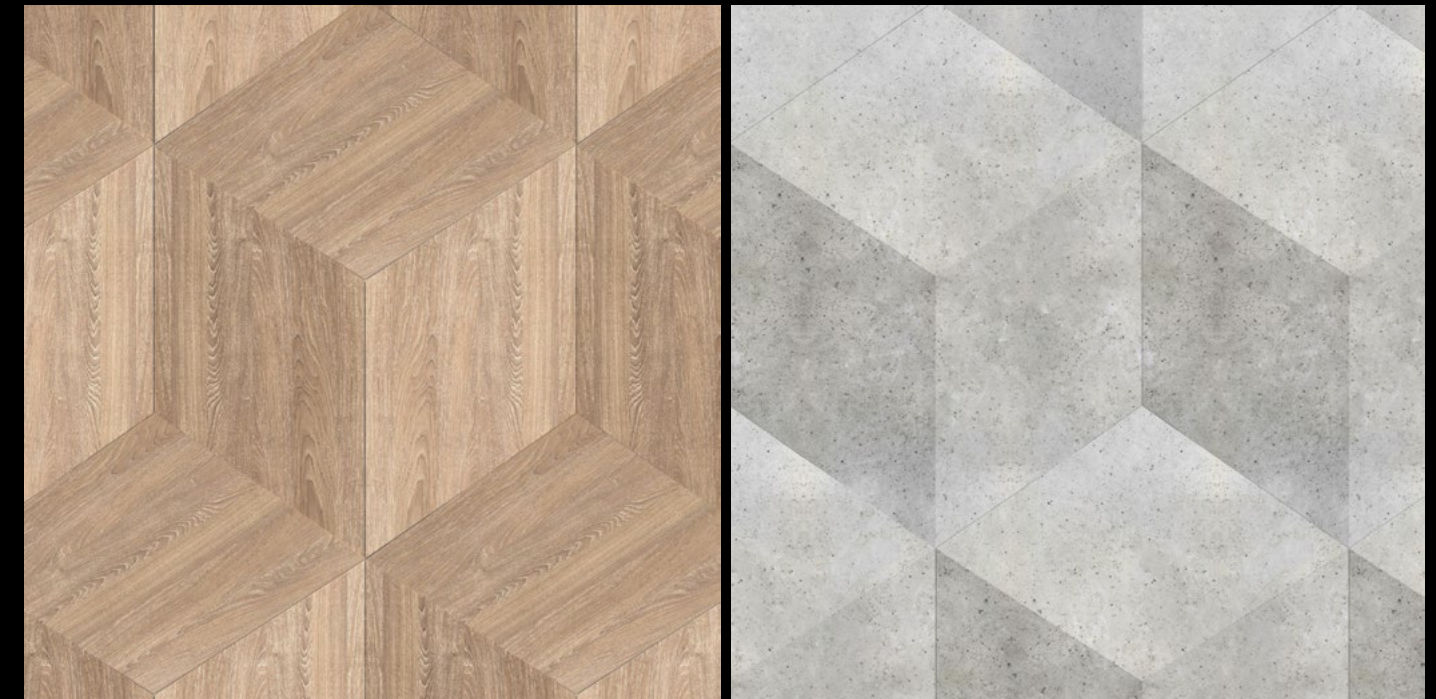
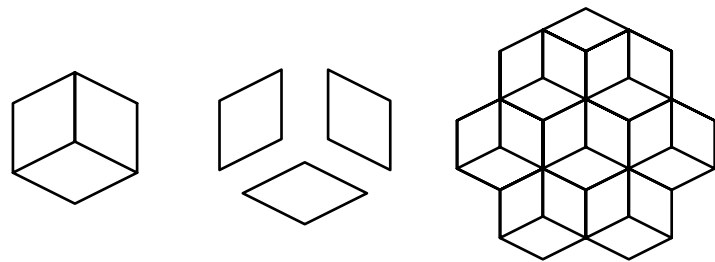




## FLOORING

The floors within each home are custom designed by BIG. The main living areas feature a large scale wood parquet, emulating the modularity of the building. The bathroom floors feature a similar concept but the effect of the modularity is achieved through custom coloured terrazzo tiles.

**BELOW:**  
Custom tile study, using the geometry of the pixels.



LIVING SPACES

BATHROOMS

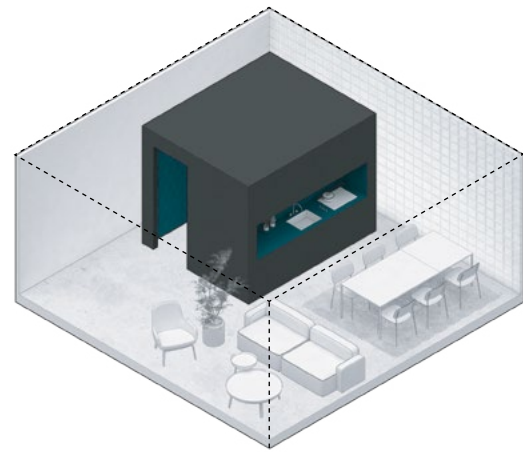




## BATHROOM MATERIALITY

The materiality of the bathrooms is inspired by the concept of anchoring the service spaces within the homes. The dark cladding of the bathroom walls are complimented with matte black plumbing fixtures and a coloured vanity which plays off the hues of the glass block façade. These elements are contrasted with the lighter tones of the custom terrazzo flooring and custom white frosted pendant light fixtures.

**BELOW:**  
The inspiration for the bathroom design was to create a dark anchoring element within the homes to contrast the glass block façade.



FLOORING



WALLS



VANITY



MIRROR











## LIGHTING

The feature lighting in the dining areas and bathrooms have been custom designed by BIG. The dining areas will feature a mouth-blown glass pendant fixture with an ombré mirrored finish. The bathrooms will feature two smaller mouth-blown glass pendant fixtures with an ombré frosted white finish.



**RIGHT:**  
Working images of the custom  
designed light fixtures by BIG.





# BUILDING SPECIFICATIONS

## COURTYARD AND PUBLIC REALM

Applying the “Total Work of Art” philosophy to the courtyard and public realm, KING Toronto will be a diverse and lively zone for living and shopping with new retail, hospitality, workspace and cultural offerings. This year-round destination will feature restaurants and cafes, one-of-a-kind shops and services, street celebrations and craft & farmers markets.

- KING Toronto will offer approximately 180,000 sf of Retail Space
- KING Toronto will offer approximately 60,000 sf of Office / Workspace

## PUBLIC ART

Until now, we have never had a canvas quite like KING Toronto, including a grand inner courtyard that will be transformed by one of the most substantial and beautiful public art works yet to grace the streets – or plazas – of Toronto. BIG have suggested the artistic possibilities of suspending mirrored spheres that would take advantage of the infinite changes of light in a partially enclosed space, creating focal points for residents looking in from all angles. As part of the City of Toronto’s Public Art program, we will invite three or four artists to compete in a juried process and we are confident that we will be able to attract world-class talent and that their proposals will fulfill our own ambitions and those of the people of Toronto.

## EXTERIOR

- High performance curtainwall system consisting of low-e coated, argon filled vision glazing within aluminium frames, translucent argon filled glass block panels and fully insulated glass block panels
- Floor-to-ceiling exterior glazing and balcony doors for the interior living spaces to extend into the exterior spaces
- Oversized balconies and terraces with white concrete pavers, almost invisible guardrails and glass block parapets to complement the interior material palette, harmonizing the interior and exterior spaces
- A variety of fully-irrigated planters, both small and large, within the terraces that have been specifically designed and curated for their location and altitude within the building
- Cable trellis system with special attachment to the building façade in specific areas dependant on the location and altitude in order to facilitate vine growth on top of the exterior façade

## SUSTAINABLE DESIGN AND GREEN INNOVATIONS

- Designed to target LEED Gold certification, the building excels in water conservation, energy reduction and storm water management
- Distinctive façade showcases a high-performance building envelope comprised of insulated and argon filled glass block panels, argon filled translucent glass block panels and high performance vision glazing to improve thermal comfort
- Operable windows in all living areas for human comfort
- Smart-metering system
- Water conservation plumbing fixtures

## STRUCTURAL DESIGN

- High strength cast-in-place concrete structure
- Wind design based on specialized wind tunnel studies

## MECHANICAL /ELECTRICAL DESIGN

- High efficiency heating & cooling system
- Vertical heat and energy recovery fancoil units
- Air conditioning with smart thermostats and room temperature controls
- “One-Touch” master switch at front entry to conveniently operate lighting for enhanced energy efficiency
- LED lighting throughout

## BUILDING SYSTEMS AND SECURITY

- Lobby with 24-hour concierge located within the East Atrium lobby
- Building-wide electronic control system with encrypted fob access
- 24-hour digital video recording surveillance of building entry points
- Video enterphone system for each lobby (North, East, South, West)
- Restricted floor access
- Standby generator set for base building backup
- Advanced biometric security systems

## LOBBIES AND CORRIDORS

- Unique lobby designs for each of the four mountain peaks (North, East, South, West)
- Secure fob access to each of the four lobbies
- 24-hour concierge located in the East Atrium with a custom BIG designed sculptural concierge desk
- BIG designed custom Italian crafted Fazioli piano within the East Atrium
- Diffuser system dispenses a custom fragrance throughout each of the lobbies and corridors
- BIG designed elevator lobbies and corridors with pixelated light-wood panels at the elevator lobbies and suite entry doors

## ELEVATORS

- Two over-height, over-sized 3,500 lb high-performance passenger elevators per lobby/ mountain (8 passenger elevators total)
- Interior cab design by BIG
- Centre-opening doors
- Cellular repeaters provide mobile phone access while in elevators

## PARKADE

- Secured gated parkade entrances
- Two dedicated bike elevators to secured bicycle storage rooms
- Select two-car private garages with storage
- Approximately 5’ x 3’ storage units
- Fob access through secured elevator vestibules
- Cellular repeaters provide mobile phone access throughout the parkade
- Future-proofed parkade allowing for 100% of the parking stalls to have EV charging stations installed

## MOUNTAIN SPA, POOL AND HOT TUB

- Indoor, heated 20-metre length lap pool
- Intersecting indoor/outdoor pool overlooking King Street W
- Indoor hot-tub
- Mountain inspired pool deck and lounging areas designed by BIG
- Change rooms with porcelain-tile clad walls and flooring, locker, shower and steam room/ sauna facilities
- Luxuriously designed spa facilities adjacent with direct connection to the pool deck
- Access to an outdoor furnished rooftop terrace

## FITNESS CENTRE

- Fully-equipped fitness centre and yoga studio
- Resilient flooring, mirrored walls and built in millwork
- Access to an outdoor furnished rooftop terrace

## GAMES AND PARTY LOUNGE

- Custom terrazzo tile flooring throughout
- Large chef’s kitchen with professional-grade appliances
- Contemporary lounge and dining furniture
- Billiards table
- Access to an outdoor furnished rooftop terrace

All specifications and materials are subject to change and/or variation without notice.

# INTERIOR HOME SPECIFICATIONS

## INTERIORS

Designed by Bjarke Ingels Group (BIG), KING Toronto's interiors are conceived in direct relation to the overall architecture and materiality of the building itself. The combination of neutral and bold, the material concept for the residences features a refined, modern industrial palette with the kitchen and bathroom being the dominant and anchoring features within the space.

## INTERIOR HOME DESIGN FEATURES

- Interiors custom designed by Bjarke Ingels Group (BIG)
- BIG designed pixelated light-wood suite entry doors with black steel hardware.
- Integrated suite numbering into the suite entry doors with black steel inserts
- Custom pattern, large format engineered hardwood flooring in a custom hexagonal pattern throughout all living, dining and bedroom spaces
- Custom pattern, tri-toned grey terrazzo flooring within the bathrooms
- Floor-to-ceiling sheer drapery along all exterior faces (with rough-in for motorization) for all homes. Two and three-bedroom homes will be equipped with motorized drapery along all exterior faces.
- Blackout curtains provide additional privacy layer for bedrooms (with rough-in for motorization) in all homes. Two and three-bedroom homes will be equipped with motorized drapery along all exterior faces.
- Overheight 8'11" exposed concrete ceilings within homes (7'8" in areas with dropped ceilings) – ceiling heights are approximate
- Exposed mechanical ductwork in areas with exposed concrete ceilings
- Three custom-designed kitchen finishes to choose from; white oak wood veneer, soft-touch matte black laminate and mirrored fluted-glass.

- Generous balconies and terraces double as outdoor living rooms
- White concrete tile balcony and terrace pavers with custom accessories, such as planters or glass cloches, depending on the altitude and exposure of the balcony/terrace

## TECHNOLOGY

- KING Toronto will offer its residents a complimentary consultation to select a state-of-the-art technology package from the project's technology consultant one year prior to closing\*
- \*Packages will be at an additional cost
- One-year free TV, phone and internet services
- "One-Touch" master switch at front entry to conveniently turn off all lighting for energy conservation
- Electric rough-in for all exterior drapery

## KITCHEN DESIGN FEATURES

- Custom designed, Italian-crafted kitchen cabinetry with full depth upper cabinets and three different finish selections:
  - 1 White oak wood veneer cabinets with a light grey terrazzo stone countertop and backsplash
  - 2 Soft-touch matte black laminate with a dark grey terrazzo stone countertop and backsplash
  - 3 Mirrored fluted-glass with a stainless-steel countertop and backsplash (upgrade option)
- Integrated and black back-painted glass appliances with stainless steel accents
- Soft-closing precision cabinet drawers and doors
- Faucets finished as accent pieces in matte black
- Custom designed waterfall-edge kitchen islands to match the kitchen finishes (as applicable/as per plans)

## STUDIO AND ONE BEDROOM HOMES APPLIANCE PACKAGE

- 24" Miele fully integrated, bottom mount fridge/freezer
- 24" Miele 4-burner gas cooktop
- 24" Miele fully integrated hood fan with energy-efficient LED lighting
- 24" Miele fully integrated dishwasher with cutlery tray and hidden control panel
- 24" Miele PureLine Black back painted glass wall oven
- 24" Miele Black back painted glass microwave
- 24" Blomberg stacking front load washer and vented dryer

## TWO BEDROOM HOMES APPLIANCE PACKAGE

- 30" Miele fully integrated, bottom mount fridge/freezer
- 30" Miele 4-burner gas cooktop
- 36" Miele fully integrated hood fan with energy-efficient LED lighting
- 24" Miele fully integrated dishwasher with cutlery tray and hidden control panel
- 30" Miele PureLine Black back painted glass wall oven
- 24" Miele PureLine Black back painted glass microwave/speedoven
- 24" Miele undercounter wine cooler (as applicable/as per plan)
- 27" Whirlpool front load washer and vented dryer with steam function

## THREE BEDROOM HOMES APPLIANCE PACKAGE

- 30" Miele fully integrated, bottom mount fridge/freezer
- 30" Miele 4-burner gas cooktop
- 36" Miele fully integrated hood fan with energy-efficient LED lighting
- 24" Miele fully integrated dishwasher with cutlery tray and hidden control panel

- 30" Miele PureLine Black back painted glass wall oven
- 24" Miele PureLine Black back painted glass microwave/speedoven
- 24" Marvel undercounter wine cooler (as applicable/as per plan)
- 27" Whirlpool front load washer and vented dryer with steam function

## PENTHOUSE APPLIANCE PACKAGE

- 30" Miele fully integrated, bottom mount fridge/freezer
- 30" Miele 5-burner gas cooktop
- 36" Miele fully integrated hood fan with energy-efficient LED lighting
- 24" Miele fully integrated dishwasher with cutlery tray and hidden control panel
- 30" Miele PureLine Black back painted glass wall oven
- 24" Miele PureLine Black back painted glass microwave/speedoven
- 24" Miele built-in and plumbed coffee maker
- 24" Miele full height wine cooler
- 27" Whirlpool front load washer and vented dryer with steam function

## MASTER BATH DESIGN FEATURES

- Custom pattern, tri-toned grey terrazzo floors
- Matte finish dark grey porcelain tile walls
- Custom designed freestanding vanity with integrated teal-coloured sink and built-in storage
- Contemporary fixtures and fittings in matte black finish
- Freestanding toilet with hidden tank
- Built-in bathtub with tile decking (as applicable/as per plans)
- Rain showerhead with additional hand shower
- Walk-in shower with linear trench drain (as applicable/as per plan)
- Freestanding bathtub and matte black tub

- filler (as applicable/as per plan)
- Custom designed pill-shaped medicine cabinet with storage shelves and integrated LED lighting
- In-floor heating

## 2<sup>ND</sup> BATHROOM / POWDER ROOM DESIGN FEATURES

- Custom pattern, tri-toned grey terrazzo floors
- Matte finish dark grey porcelain tile wet walls
- Custom designed freestanding vanity with integrated teal-coloured sink and built-in storage
- Contemporary fixtures and fittings in matte black finish
- Freestanding toilet with hidden tank
- Built-in bathtub with tile decking
- Rain showerhead with additional hand shower
- Walk-in shower with linear trench drain (as applicable/as per plans)
- In-floor heating in all Penthouse home bathrooms

## FURNISHINGS

B&B Italia, the world's leading contemporary furniture company, has collaborated with BIG to carefully curate a collection of furniture packages that complement the modern industrial design aesthetic of the interior architecture. Studio and select one-bedroom units will come furnished by B&B Italia and residents of one, two and three-bedroom homes will have the option of purchasing furniture packages with their home at KING Toronto.

All specifications and materials are subject to change and/or variation without notice.

# KITCHEN APPLIANCES



**Miele Refrigerator  
With Bottom Freezer Door**  
24" | Studio and 1 Bedroom  
30" | 2, 3 Bedrooms and PH



**Miele Gas Cooktop**  
24" | 4 Burners | Studio and 1 Bedrooms  
30" | 4 Burners | 2, 3 Bedrooms  
30" | 5 Burners | PH



**Miele Integrated Hoodfan**  
24" | Studio and 1 Bedrooms  
36" | 2, 3 Bedrooms and PH



**Miele Convection Oven**  
24" | Studio and 1 Bedrooms  
30" | 2, 3 Bedrooms and PH



**Miele Built-In Microwave Oven**  
Studio and 1 Bedroom



**Miele Fully-Integrated 24" Dishwasher  
With Upper Cutlery Tray And No Visible  
Controls**



**Matte Black Kitchen Faucet  
With Pull-Down Spray**



**Miele 30" SpeedOven  
combination oven/microwave**  
2, 3 Bedrooms and PH



**Miele Built-In Coffeemaker**  
PH



**Marvel Undercounter Wine Cooler With  
Integrated Panel**  
2, 3 Bedrooms



**Miele Tall Integrated Wine Storage**  
PH

**BATHROOM  
FIXTURES**

**WASHER/  
DRYER**



Freestanding Bathtub (as per plans) in Matte White Finish

Freestanding Tub Faucet in Matte Black Finish

Integrated Tub

Wall Mounted Sink and Bath Faucet in Matte Black Finish

Custom Vanity with Integrated Storage

Floor Mounted Toilet with In-Wall Tank

Rain Showerhead in Matte Black Finish

Hand-shower in Matte Black Finish

Control



Blomberg 24" Front Load Washer  
Studio and 1 Bedroom

Whirlpool 27" Front Load Washer  
2, 3 Bedrooms and PH

Blomberg 24" Front Load Dryer  
Studio and 1 Bedroom

Whirlpool 27" Front Load Dryer  
2, 3 Bedrooms and PH

## FURNISHINGS

## B&B ITALIA

B&B Italia is a leading group in the high-end design furnishing sector. Founded in 1966 by Piero Ambrogio Busnelli, B&B Italia has always stood out for its strong orientation towards research and innovation, which has allowed it to give life, in collaboration with the masters of design, to iconic and timeless products.

Headquartered in Novedrate (Como) – in a building designed by Renzo Piano and Richard Rogers in 1971 – the company has built its success on the ability to represent contemporary culture, to sense and anticipate trends, to respond to changes in taste and living needs. B&B Italia's call to research

and innovation is mirrored in its collections of furnishings that represent an essential segment of Italian design history, based on a unique union of creativity, innovation and industrial know-how, and focused on producing timeless products that last a lifetime. The heart of the company is its internal R&D Centre, which is a real forge of cultural meetings and experiences, strongly fuelled by partnerships with international designers such as Antonio Citterio, Piero Lissoni, Mario Bellini, Gaetano Pesce, Naoto Fukasawa, Patricia Urquiola, Barber & Osgerby, Jeffrey Bennett, and many others.



RIGHT:  
B&B Italia's headquarters in  
Novedrate, Italy.

## WESTBANK X B&B ITALIA

Westbank has partnered with B&B Italia, the leading Italian company in the international world of designer furniture, to curate a collection of beautiful, well-crafted furnishings for each home.

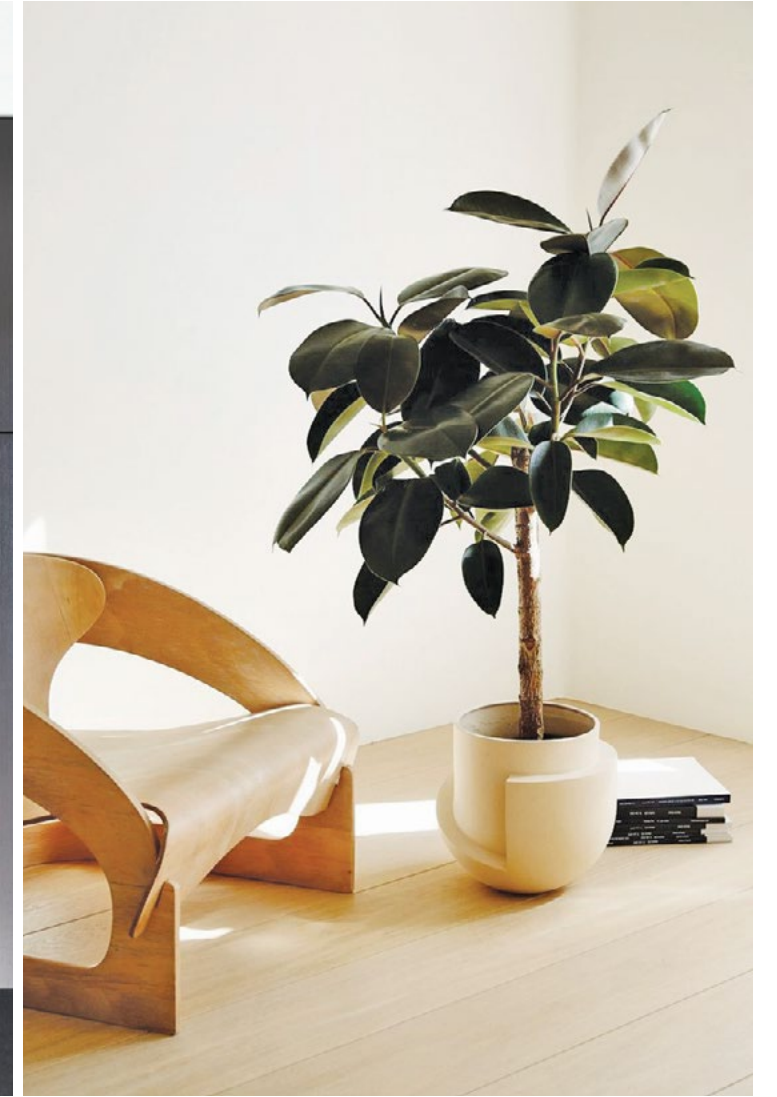
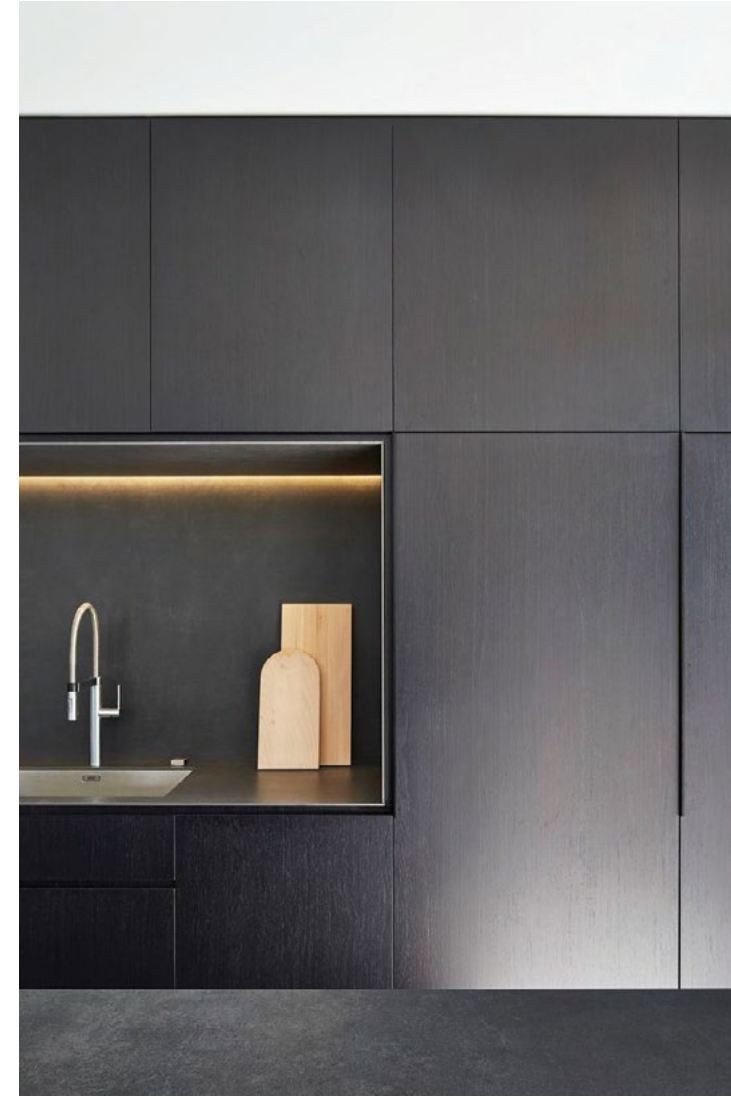
B&B Italia's products have contributed to the history of Italian design. A history based on technology, creativity, and that inherent style that has made Italy famous throughout the world, establishing the "Made in Italy" brand that has been exported to international markets. The B&B Italia furniture collection has its roots in its ability to reflect contemporary culture and the capacity to respond quickly to the ever changing lifestyles, habits and requirements. Modern furniture elements that are distinctive and characterized by exceptional quality and timeless elegance.

The result of the unique union between creativity, innovation and industrial know-how. Lounge chairs, sofas and standing lights will draw on the rich tradition of Italian furniture design, including the essence of Milan's classic modernist design era from 1960-1980, but also contemporary models, supplied and manufactured by B&B Italia.

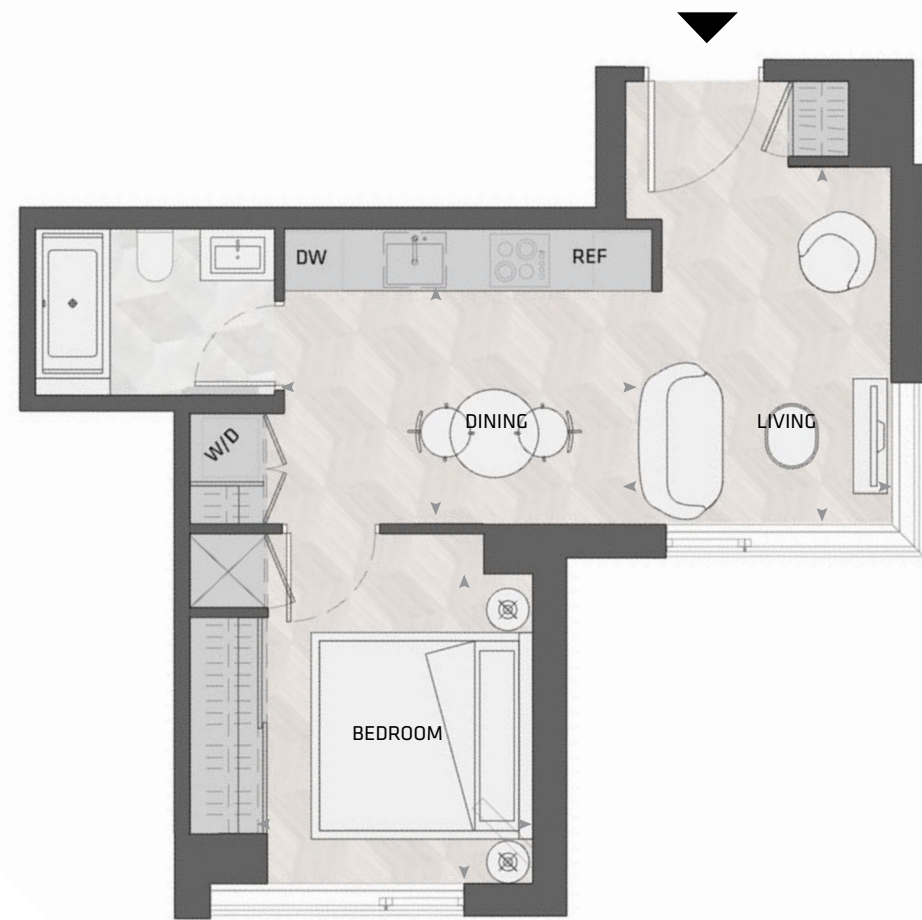
To provide the continuity of design language and quality, BIG has also collaborated heavily with a custom kitchen manufacturer from Italy, procured through B&B Italia, to achieve a design that reflects the beautiful aesthetic of the homes and to realize their design intentions and detailing criteria.



# INSPIRATION



**STUDIO & ONE BEDROOM  
HOMES (UNDER 600 FT<sup>2</sup>)**





# STUDIO & ONE BEDROOM HOMES (UNDER 600 FT<sup>2</sup>)

## LIVING / DINING

HARBOR SOFA



HARBOR ARMCHAIR AND STOOL



BUTTON TABLE



PATHOS TABLE



CHARLOTTE DINING CHAIR



EUCALIPTO MEDIA UNIT



## BEDROOM

SIENA BED



## ATELIER/STUDY

CHARLOTTE CHAIR



MAX DESK



**ONE BEDROOM HOMES  
(OVER 600 FT<sup>2</sup>)**



# ONE BEDROOM HOMES (OVER 600 FT<sup>2</sup>)

## LIVING / DINING

TUFTY TOO SOFA



DO MARU SIDE CHAIR



MARU TABLE



EUCALIPTO MEDIA UNIT



PATHOS TABLE (ROUND)



MIRTO DINING TABLE (RECTANGULAR)



CHARLOTTE DINING CHAIR



## BEDROOM



## ATELIER/STUDY

CHARLOTTE CHAIR



MAX DESK





## TWO BEDROOM HOMES



# TWO BEDROOM HOMES

## LIVING / DINING

TUFTY TOO SOFA



TOBI IASHI COFFEE TABLE



THEO SIDE CHAIR



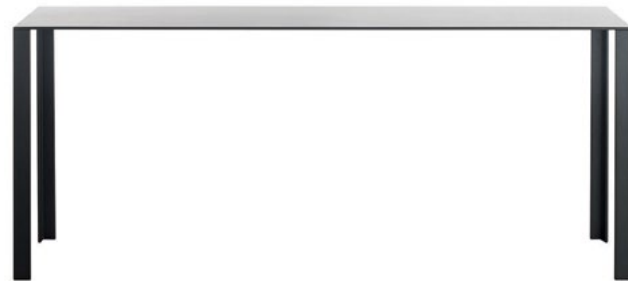
EUCALIPTO MEDIA UNIT



CHARLOTTE DINING CHAIR



PROGETTO DINING TABLE



PATHOS TABLE (ROUND)



## BEDROOMS

MASTER  
TUFTY BED



SECOND BEDROOM  
SIENA BED



## ATELIER/STUDY

CHARLOTTE CHAIR



MAX DESK





# THREE BEDROOM AND PENTHOUSE HOMES





# THREE BEDROOM AND PENTHOUSE HOMES

## LIVING / DINING

ANDI SOFA



LE FORMICHE COFFEE TABLE



THEO SIDE CHAIR



EUCALIPTO MEDIA UNIT



CHARLOTTE DINING CHAIR



MIRTO DINING TABLE



## BEDROOMS

MASTER  
TUFTY BED



SECOND BEDROOM  
SIENA BED



## ATELIER/STUDY

CHARLOTTE CHAIR



MAX DESK





# KING

## HOME 501 5



1BD.02

**1 Bedroom + Atelier**  
**1 Bathroom**

**Total Living:**  
**618 ft<sup>2</sup>**

Interior Living:  
618 ft<sup>2</sup>

Exterior Living:  
N/A

<b>LIVING</b>	10' 2" X 8' 8"
<b>DINING</b>	7' 3" X 9' 6"
<b>BEDROOM</b>	14' 5" X 12' 3"
<b>ATELIER</b>	5' 5" X 5' 5"

COURTYARD

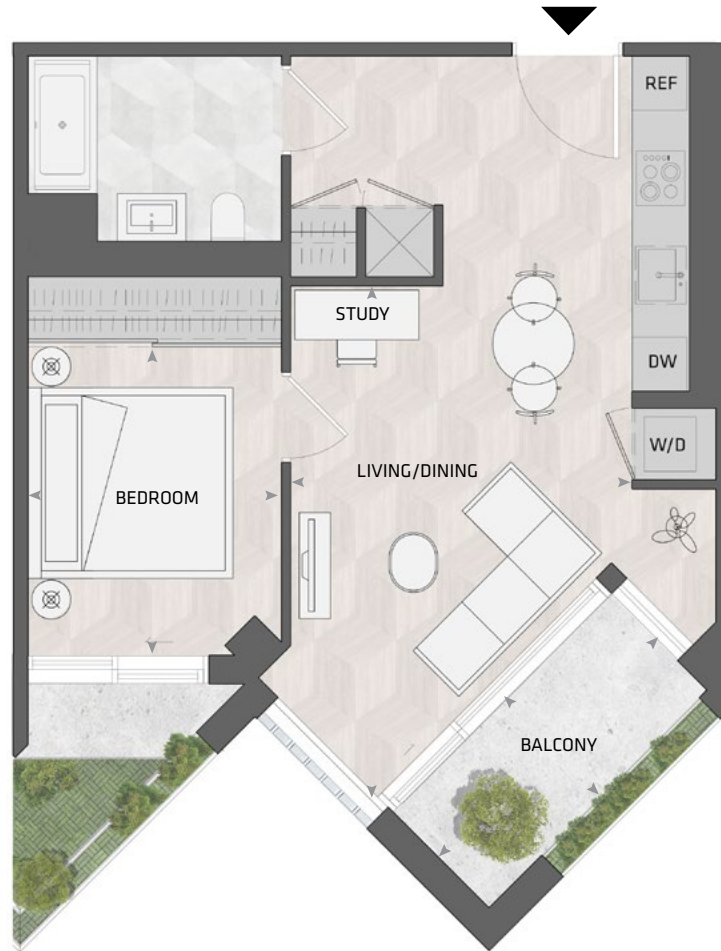


**SOUTH MOUNTAIN KEYPLAN**

All dimensions and specifications are approximate. Certain plans are reverse or mirror image. Balcony square footages are estimated and may vary from that stated. Please see Sales Representative for details. Furniture not included. Refer to key plan for unit location and orientation. E. & O.E.

# KING

## HOME 502 5



1BD.06B

**1 Bedroom + Study**  
**1 Bathroom**

**Total Living:**  
**725 ft<sup>2</sup>**

Interior Living:  
609 ft<sup>2</sup>

Exterior Living:  
116 ft<sup>2</sup>

<b>LIVING/ DINING</b>	12' 4" X 18' 7"
<b>BEDROOM</b>	9' 2" X 11' 7"
<b>BALCONY</b>	11' 0" X 4' 11"

COURTYARD



**SOUTH MOUNTAIN KEYPLAN**

All dimensions and specifications are approximate. Certain plans are reverse or mirror image. Balcony square footages are estimated and may vary from that stated. Please see Sales Representative for details. Furniture not included. Refer to key plan for unit location and orientation. E. & O.E.

# KING

## HOME 503 5



1BD.06

**1 Bedroom + Atelier**  
**1 Bathroom**

**Total Living:**  
**725 ft<sup>2</sup>**

Interior Living:  
593 ft<sup>2</sup>

Exterior Living:  
132 ft<sup>2</sup>

<b>LIVING/ DINING</b>	13' 11" X 12' 0"
<b>BEDROOM</b>	11' 4" X 9' 6"
<b>ATELIER</b>	5' 6" X 5' 1"
<b>BALCONY</b>	13' X 7' 9"

COURTYARD



**SOUTH MOUNTAIN KEYPLAN**

All dimensions and specifications are approximate. Certain plans are reverse or mirror image. Balcony square footages are estimated and may vary from that stated. Please see Sales Representative for details. Furniture not included. Refer to key plan for unit location and orientation. E. & O.E.

# KING

## HOME 505 5



1BD.05A

**1 Bedroom + Atelier**  
**1 Bathroom**

**Total Living:**  
**724 ft<sup>2</sup>**

Interior Living:  
652 ft<sup>2</sup>

Exterior Living:  
72 ft<sup>2</sup>

<b>LIVING</b>	11' 2" x 11' 8"
<b>DINING</b>	10' 1" x 8' 9"
<b>BEDROOM</b>	10' 6" x 11' 2"
<b>ATELIER</b>	10' 1" x 6' 8"
<b>BALCONY</b>	11' 0" x 4' 11"

COURTYARD



**SOUTH MOUNTAIN KEYPLAN**

All dimensions and specifications are approximate. Certain plans are reverse or mirror image. Balcony square footages are estimated and may vary from that stated. Please see Sales Representative for details. Furniture not included. Refer to key plan for unit location and orientation. E. & O.E.

# KING

## HOME 506 5



1BD.01F

**1 Bedroom + Atelier  
1 Bathroom**

**Total Living:  
724 ft<sup>2</sup>**

Interior Living:  
652 ft<sup>2</sup>

Exterior Living:  
72 ft<sup>2</sup>

<b>LIVING</b>	10' 11" X 10' 3"
<b>DINING</b>	10' 6" X 8' 6"
<b>BEDROOM</b>	10' 2" X 9' 10"
<b>ATELIER</b>	7' 1" X 4' 8"
<b>BALCONY</b>	11' 0" X 4' 11"

COURTYARD



**SOUTH MOUNTAIN KEYPLAN**

All dimensions and specifications are approximate. Certain plans are reverse or mirror image. Balcony square footages are estimated and may vary from that stated. Please see Sales Representative for details. Furniture not included. Refer to key plan for unit location and orientation. E. & O.E.

# KING

## HOME 507 5



2BD.67B

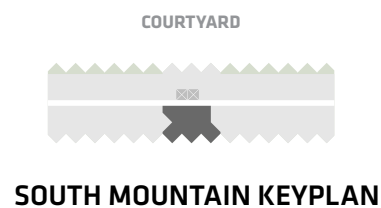
**2 Bedroom + Atelier**  
**2 Bathroom**

**Total Living:**  
**1185 ft<sup>2</sup>**

Interior Living:  
1113 ft<sup>2</sup>

Exterior Living:  
72 ft<sup>2</sup>

<b>LIVING/ DINING</b>	12' 0" X 18' 3"
<b>MASTER BD</b>	11' 2" x 11' 7"
<b>BEDROOM 2</b>	9' 10" x 11' 2"
<b>ATELIER</b>	5' 5" x 4' 8"
<b>BALCONY</b>	11' 0" x 4' 11"



All dimensions and specifications are approximate. Certain plans are reverse or mirror image. Balcony square footages are estimated and may vary from that stated. Please see Sales Representative for details. Furniture not included. Refer to key plan for unit location and orientation. E. & O.E.



# KING

## HOME 508 5



1BD.01F

**1 Bedroom + Atelier**  
**1 Bathroom**

**Total Living:**  
**724 ft<sup>2</sup>**

Interior Living:  
652 ft<sup>2</sup>

Exterior Living:  
72 ft<sup>2</sup>

<b>LIVING</b>	10' 11" X 10' 3"
<b>DINING</b>	10' 6" X 8' 6"
<b>BEDROOM</b>	10' 2" X 9' 10"
<b>ATELIER</b>	7' 1" X 4' 8"
<b>BALCONY</b>	11' 0" X 4' 11"

COURTYARD

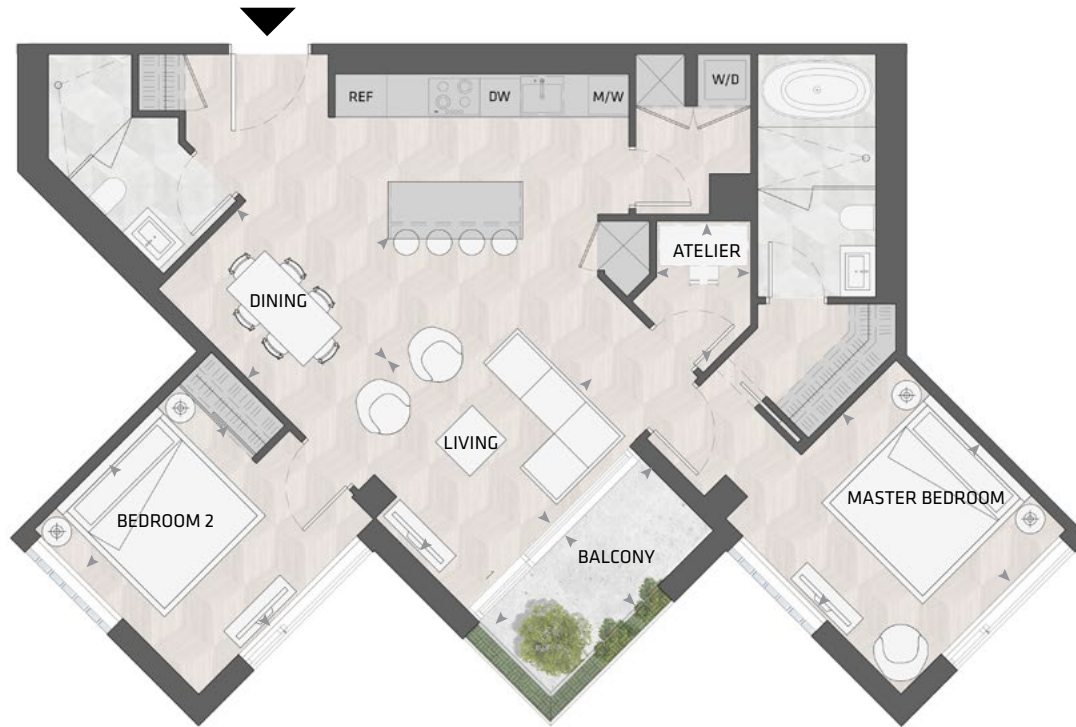


**SOUTH MOUNTAIN KEYPLAN**

All dimensions and specifications are approximate. Certain plans are reverse or mirror image. Balcony square footages are estimated and may vary from that stated. Please see Sales Representative for details. Furniture not included. Refer to key plan for unit location and orientation. E. & O.E.

# KING

## HOME 509 5



2BD.67A

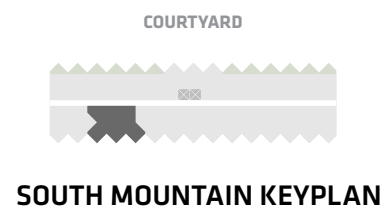
**2 Bedroom + Atelier**  
**2 Bathroom**

**Total Living:**  
**1211 ft<sup>2</sup>**

Interior Living:  
1139 ft<sup>2</sup>

Exterior Living:  
72 ft<sup>2</sup>

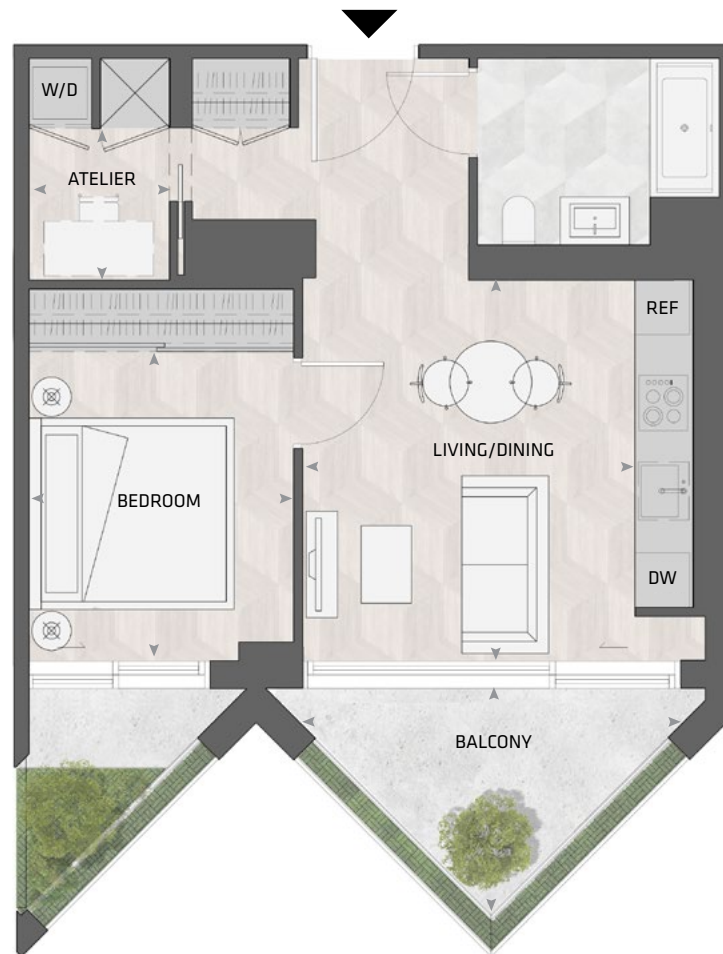
<b>LIVING</b>	12' 3" X 11' 7"
<b>DINING</b>	9' 7" X 9' 8"
<b>MASTER BD</b>	11' 0" x 11' 4"
<b>BEDROOM 2</b>	9' 8" x 11' 1"
<b>ATELIER</b>	4' 7" x 5' 0"
<b>BALCONY</b>	11' 0" x 4' 11"



All dimensions and specifications are approximate. Certain plans are reverse or mirror image. Balcony square footages are estimated and may vary from that stated. Please see Sales Representative for details. Furniture not included. Refer to key plan for unit location and orientation. E. & O.E.

# KING

## HOME 510 5



1BD.06

**1 Bedroom + Atelier**  
**1 Bathroom**

**Total Living:**  
**725 ft<sup>2</sup>**

Interior Living:  
593 ft<sup>2</sup>

Exterior Living:  
132 ft<sup>2</sup>

<b>LIVING/ DINING</b>	13' 11" X 12' 0"
<b>BEDROOM</b>	11' 4" X 9' 6"
<b>ATELIER</b>	5' 6" X 5' 1"
<b>BALCONY</b>	13' X 7' 9"

COURTYARD



**SOUTH MOUNTAIN KEYPLAN**

All dimensions and specifications are approximate. Certain plans are reverse or mirror image. Balcony square footages are estimated and may vary from that stated. Please see Sales Representative for details. Furniture not included. Refer to key plan for unit location and orientation. E. & O.E.

# KING

## HOME 511 5



2BD.13

**2 Bedroom**  
**2 Bathroom**

**Total Living:**  
**1196 ft<sup>2</sup>**

Interior Living:  
975 ft<sup>2</sup>

Exterior Living:  
221 ft<sup>2</sup>

<b>LIVING/ DINING</b>	24' 4" X 9' 9"
<b>MASTER BD</b>	9' 9" X 13' 8"
<b>BEDROOM 2</b>	12' 2" X 12' 6"
<b>BALCONY</b>	13' 0" X 7' 9"

COURTYARD



**SOUTH MOUNTAIN KEYPLAN**

All dimensions and specifications are approximate. Certain plans are reverse or mirror image. Balcony square footages are estimated and may vary from that stated. Please see Sales Representative for details. Furniture not included. Refer to key plan for unit location and orientation. E. & O.E.

# KING

## HOME 6015



1BD.02

**1 Bedroom + Atelier**  
**1 Bathroom**

**Total Living:**  
**618 ft<sup>2</sup>**

Interior Living:  
618 ft<sup>2</sup>

Exterior Living:  
N/A

<b>LIVING</b>	10' 2" X 8' 8"
<b>DINING</b>	7' 3" X 9' 6"
<b>BEDROOM</b>	14' 5" X 12' 3"
<b>ATELIER</b>	5' 5" X 5' 5"

COURTYARD

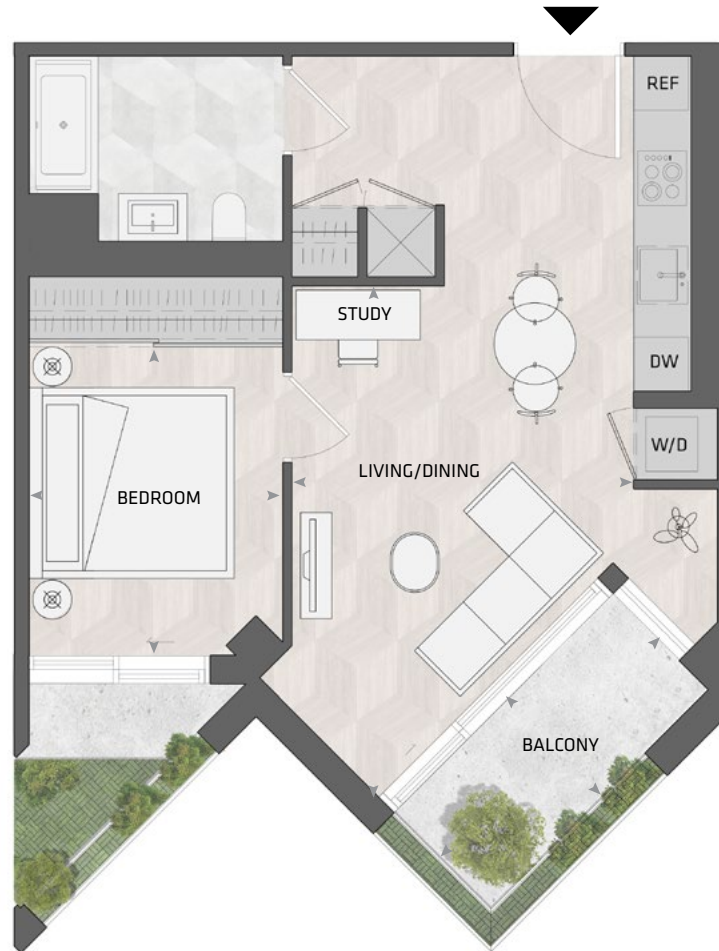


**SOUTH MOUNTAIN KEYPLAN**

All dimensions and specifications are approximate. Certain plans are reverse or mirror image. Balcony square footages are estimated and may vary from that stated. Please see Sales Representative for details. Furniture not included. Refer to key plan for unit location and orientation. E. & O.E.

# KING

## HOME 602 5



1BD.06B

**1 Bedroom + Study**  
**1 Bathroom**

**Total Living:**  
**726 ft<sup>2</sup>**

Interior Living:  
610 ft<sup>2</sup>

Exterior Living:  
116 ft<sup>2</sup>

<b>LIVING/ DINING</b>	13' 11" X 12' 0"
<b>BEDROOM</b>	11' 4" X 9' 6"
<b>ATELIER</b>	5' 6" X 5' 1"
<b>BALCONY</b>	13' X 7' 9"

COURTYARD



**SOUTH MOUNTAIN KEYPLAN**

All dimensions and specifications are approximate. Certain plans are reverse or mirror image. Balcony square footages are estimated and may vary from that stated. Please see Sales Representative for details. Furniture not included. Refer to key plan for unit location and orientation. E. & O.E.

# KING

## HOME 603 5



1BD.06

**1 Bedroom + Atelier**  
**1 Bathroom**

**Total Living:**  
**725 ft<sup>2</sup>**

Interior Living:  
593 ft<sup>2</sup>

Exterior Living:  
132 ft<sup>2</sup>

<b>LIVING/ DINING</b>	13' 11" X 12' 0"
<b>BEDROOM</b>	11' 4" X 9' 6"
<b>ATELIER</b>	5' 6" X 5' 1"
<b>BALCONY</b>	13' X 7' 9"

COURTYARD

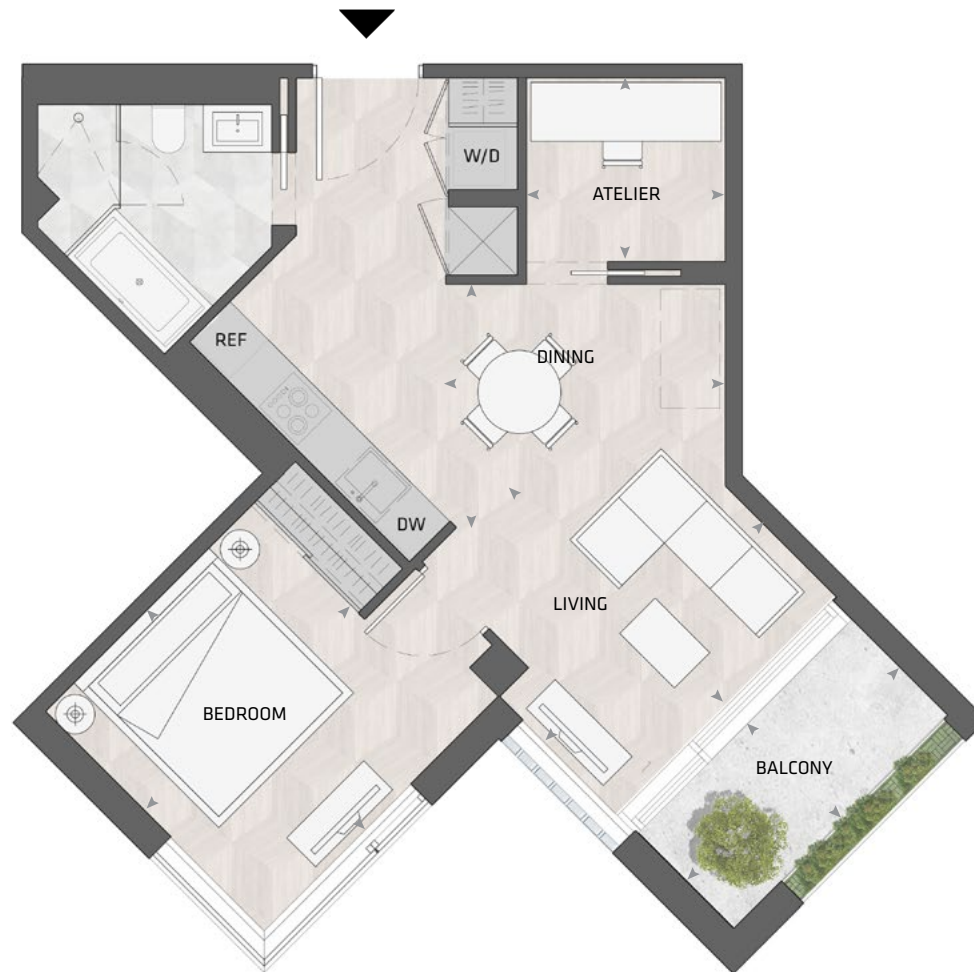


**SOUTH MOUNTAIN KEYPLAN**

All dimensions and specifications are approximate. Certain plans are reverse or mirror image. Balcony square footages are estimated and may vary from that stated. Please see Sales Representative for details. Furniture not included. Refer to key plan for unit location and orientation. E. & O.E.

# KING

## HOME 605 5



1BD.05A

**1 Bedroom + Atelier**  
**1 Bathroom**

**Total Living:**  
**724 ft<sup>2</sup>**

Interior Living:  
652 ft<sup>2</sup>

Exterior Living:  
72 ft<sup>2</sup>

<b>LIVING</b>	11' 2" x 11' 8"
<b>DINING</b>	10' 1" x 8' 9"
<b>BEDROOM</b>	10' 6" x 11' 2"
<b>ATELIER</b>	10' 1" x 6' 8"
<b>BALCONY</b>	11' 0" x 4' 11"

COURTYARD



**SOUTH MOUNTAIN KEYPLAN**

All dimensions and specifications are approximate. Certain plans are reverse or mirror image. Balcony square footages are estimated and may vary from that stated. Please see Sales Representative for details. Furniture not included. Refer to key plan for unit location and orientation. E. & O.E.



# KING

## HOME 606 5



1BD.01F

**1 Bedroom + Atelier**  
**1 Bathroom**

**Total Living:**  
**724 ft<sup>2</sup>**

Interior Living:  
652 ft<sup>2</sup>

Exterior Living:  
72 ft<sup>2</sup>

<b>LIVING</b>	10' 11" X 10' 3"
<b>DINING</b>	10' 6" X 8' 6"
<b>BEDROOM</b>	10' 2" X 9' 10"
<b>ATELIER</b>	7' 1" X 4' 8"
<b>BALCONY</b>	11' 0" X 4' 11"

COURTYARD

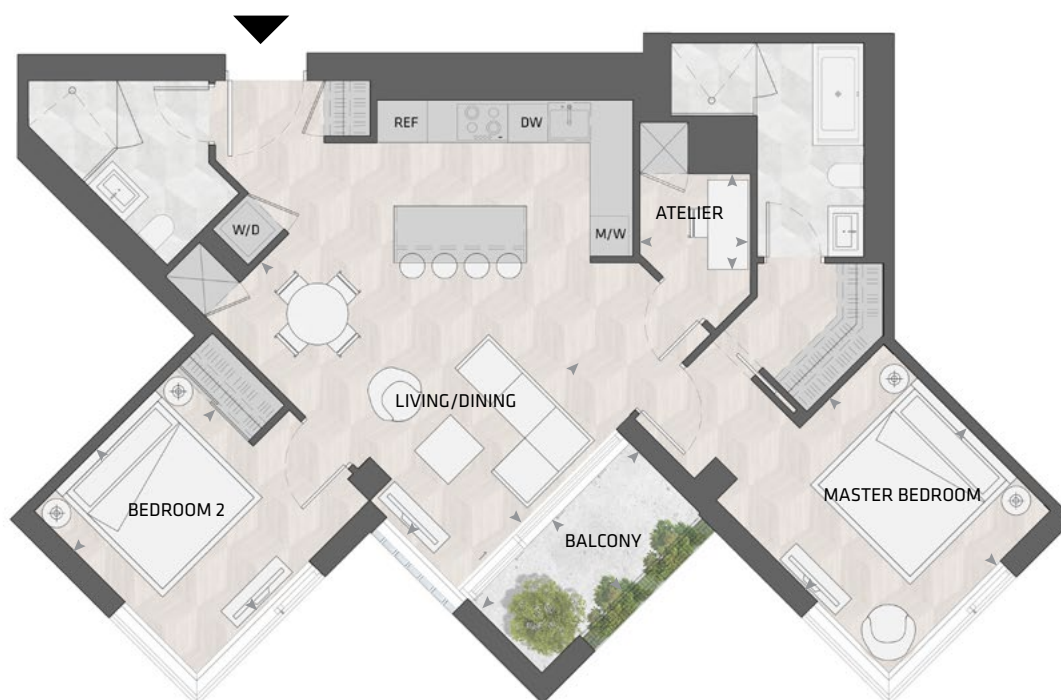


**SOUTH MOUNTAIN KEYPLAN**

All dimensions and specifications are approximate. Certain plans are reverse or mirror image. Balcony square footages are estimated and may vary from that stated. Please see Sales Representative for details. Furniture not included. Refer to key plan for unit location and orientation. E. & O.E.

# KING

## HOME 607 5



2BD.67B

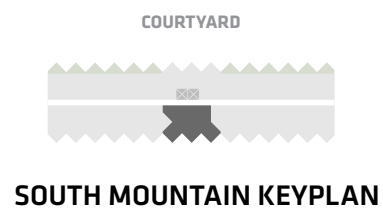
**2 Bedroom + Atelier**  
**2 Bathroom**

**Total Living:**  
**1185 ft<sup>2</sup>**

Interior Living:  
1113 ft<sup>2</sup>

Exterior Living:  
72 ft<sup>2</sup>

<b>LIVING/ DINING</b>	12' 0" X 18' 3"
<b>MASTER BD</b>	11' 2" x 11' 7"
<b>BEDROOM 2</b>	9' 10" x 11' 2"
<b>ATELIER</b>	5' 5" x 4' 8"
<b>BALCONY</b>	11' 0" x 4' 11"



All dimensions and specifications are approximate. Certain plans are reverse or mirror image. Balcony square footages are estimated and may vary from that stated. Please see Sales Representative for details. Furniture not included. Refer to key plan for unit location and orientation. E. & O.E.

# KING

## HOME 608 5



1BD.01F

**1 Bedroom + Atelier**  
**1 Bathroom**

**Total Living:**  
**725 ft<sup>2</sup>**

Interior Living:  
653 ft<sup>2</sup>

Exterior Living:  
72 ft<sup>2</sup>

<b>LIVING</b>	10' 11" X 10' 3"
<b>DINING</b>	10' 6" X 8' 6"
<b>BEDROOM</b>	10' 2" X 9' 10"
<b>ATELIER</b>	7' 1" X 4' 8"
<b>BALCONY</b>	11' 0" X 4' 11"

COURTYARD

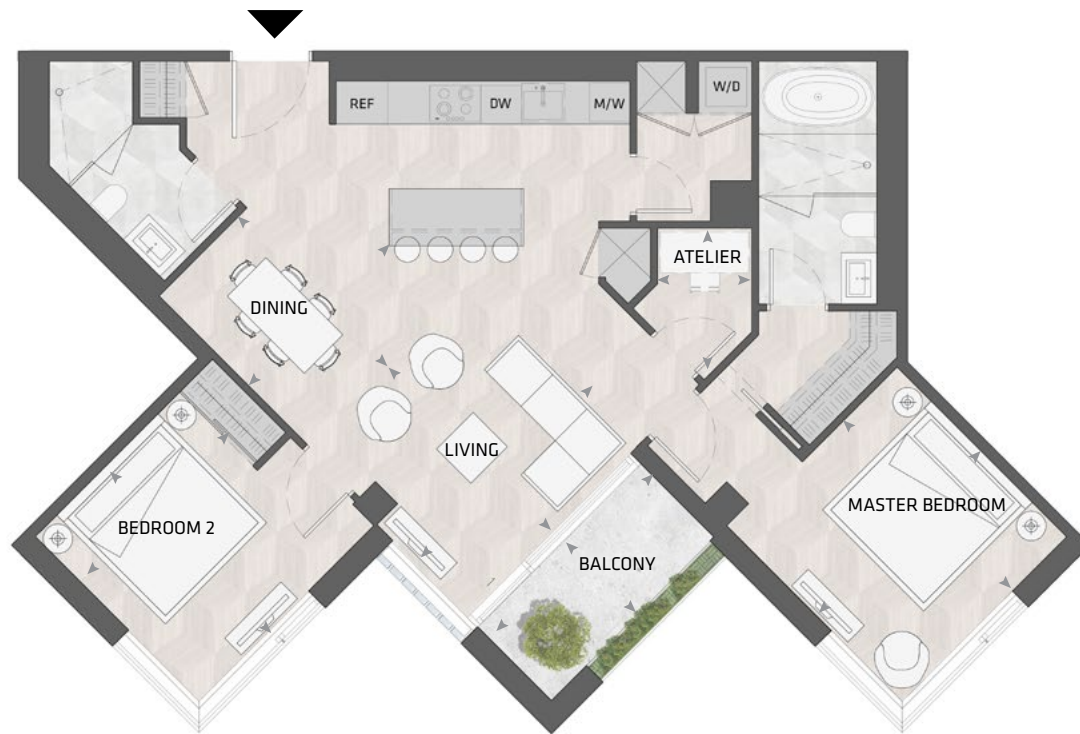


**SOUTH MOUNTAIN KEYPLAN**

All dimensions and specifications are approximate. Certain plans are reverse or mirror image. Balcony square footages are estimated and may vary from that stated. Please see Sales Representative for details. Furniture not included. Refer to key plan for unit location and orientation. E. & O.E.

# KING

## HOME 609 5



2BD.67A

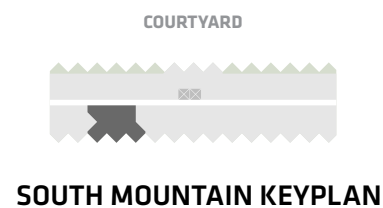
**2 Bedroom + Atelier**  
**2 Bathroom**

**Total Living:**  
**1196 ft<sup>2</sup>**

Interior Living:  
1139 ft<sup>2</sup>

Exterior Living:  
72 ft<sup>2</sup>

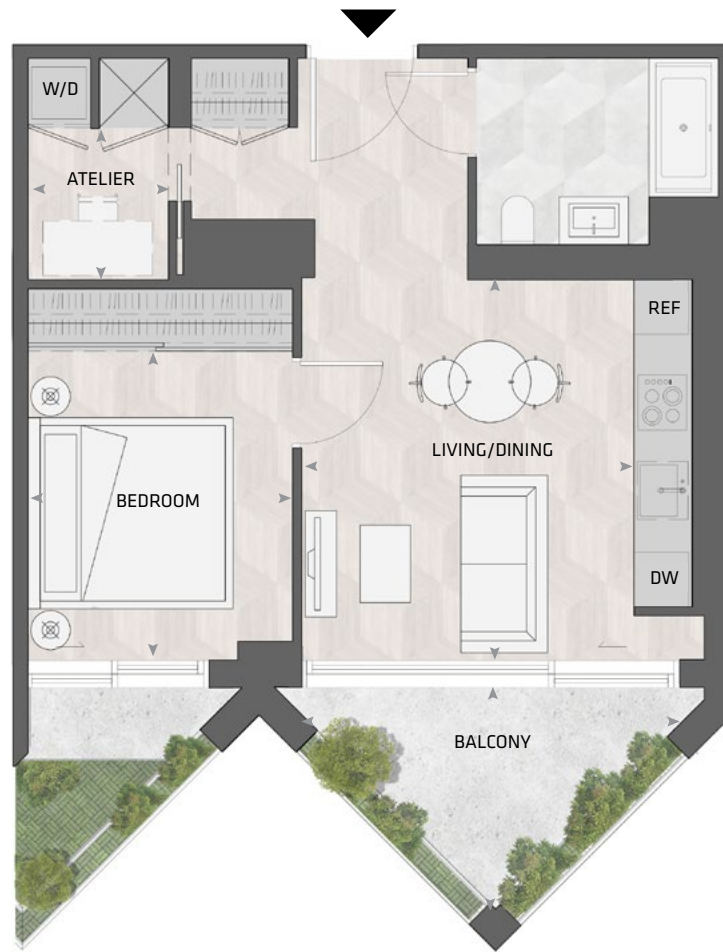
<b>LIVING</b>	12' 3" X 11' 7"
<b>DINING</b>	9' 7" X 9' 8"
<b>MASTER BD</b>	11' 0" x 11' 4"
<b>BEDROOM 2</b>	9' 8" x 11' 1"
<b>ATELIER</b>	4' 7" x 5' 0"
<b>BALCONY</b>	11' 0" x 4' 11"



All dimensions and specifications are approximate. Certain plans are reverse or mirror image. Balcony square footages are estimated and may vary from that stated. Please see Sales Representative for details. Furniture not included. Refer to key plan for unit location and orientation. E. & O.E.

# KING

## HOME 610 5



1BD.06

**1 Bedroom + Atelier**  
**1 Bathroom**

**Total Living:**  
**725 ft<sup>2</sup>**

Interior Living:  
593 ft<sup>2</sup>

Exterior Living:  
132 ft<sup>2</sup>

<b>LIVING/ DINING</b>	13' 11" X 12' 0"
<b>BEDROOM</b>	11' 4" X 9' 6"
<b>ATELIER</b>	5' 6" X 5' 1"
<b>BALCONY</b>	13' X 7' 9"

COURTYARD

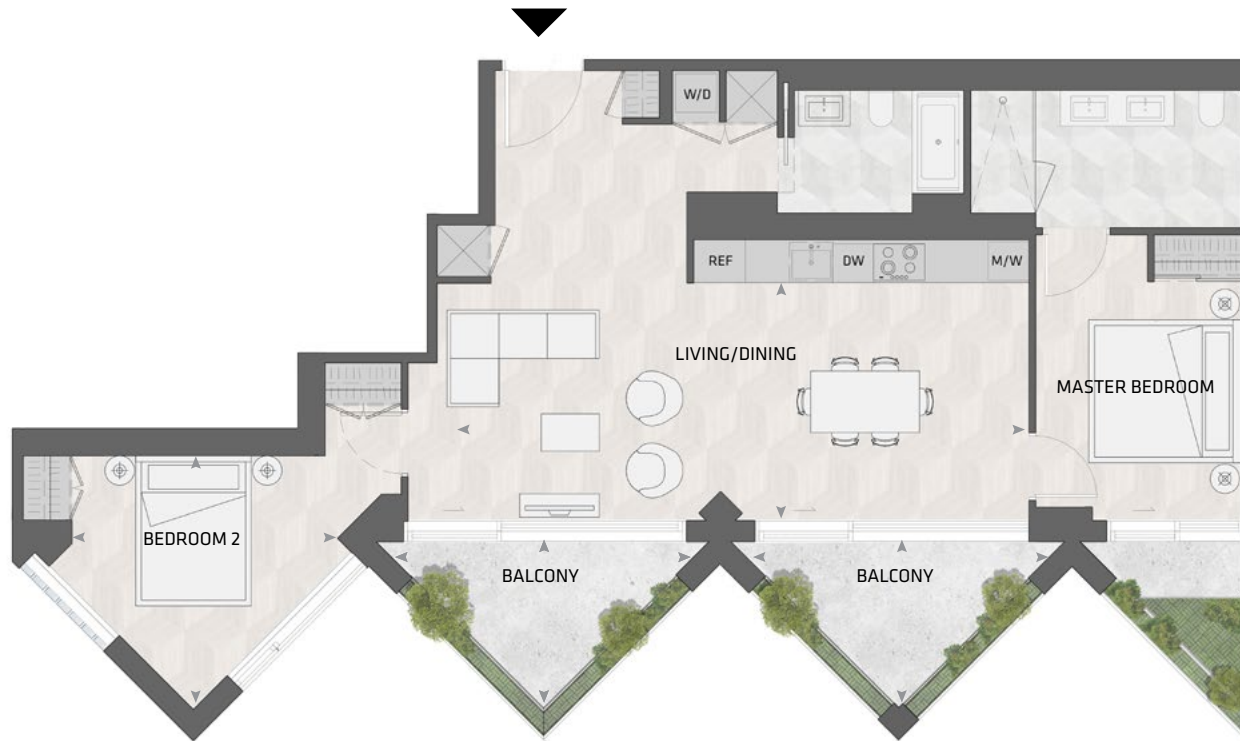


**SOUTH MOUNTAIN KEYPLAN**

All dimensions and specifications are approximate. Certain plans are reverse or mirror image. Balcony square footages are estimated and may vary from that stated. Please see Sales Representative for details. Furniture not included. Refer to key plan for unit location and orientation. E. & O.E.

# KING

## HOME 6115



2BD.73

**2 Bedroom**  
**2 Bathroom**

**Total Living:**  
**1319 ft<sup>2</sup>**

Interior Living:  
1098 ft<sup>2</sup>

Exterior Living:  
221

<b>LIVING/ DINING</b>	28' 6" X 11' 8"
<b>MASTER BD</b>	11' 9" X 9' 11"
<b>BEDROOM 2</b>	12' 3" X 12' 2"
<b>BALCONY</b>	13' 0" X 7' 9"

COURTYARD



**SOUTH MOUNTAIN KEYPLAN**

All dimensions and specifications are approximate. Certain plans are reverse or mirror image. Balcony square footages are estimated and may vary from that stated. Please see Sales Representative for details. Furniture not included. Refer to key plan for unit location and orientation. E. & O.E.

# KING

## HOME 7015



1BD.02

**1 Bedroom + Atelier**  
**1 Bathroom**

**Total Living:**  
**618 ft<sup>2</sup>**

Interior Living:  
618 ft<sup>2</sup>

Exterior Living:  
N/A

<b>LIVING</b>	10' 2" X 8' 8"
<b>DINING</b>	7' 3" X 9' 6"
<b>BEDROOM</b>	14' 5" X 12' 3"
<b>ATELIER</b>	5' 5" X 5' 5"

COURTYARD

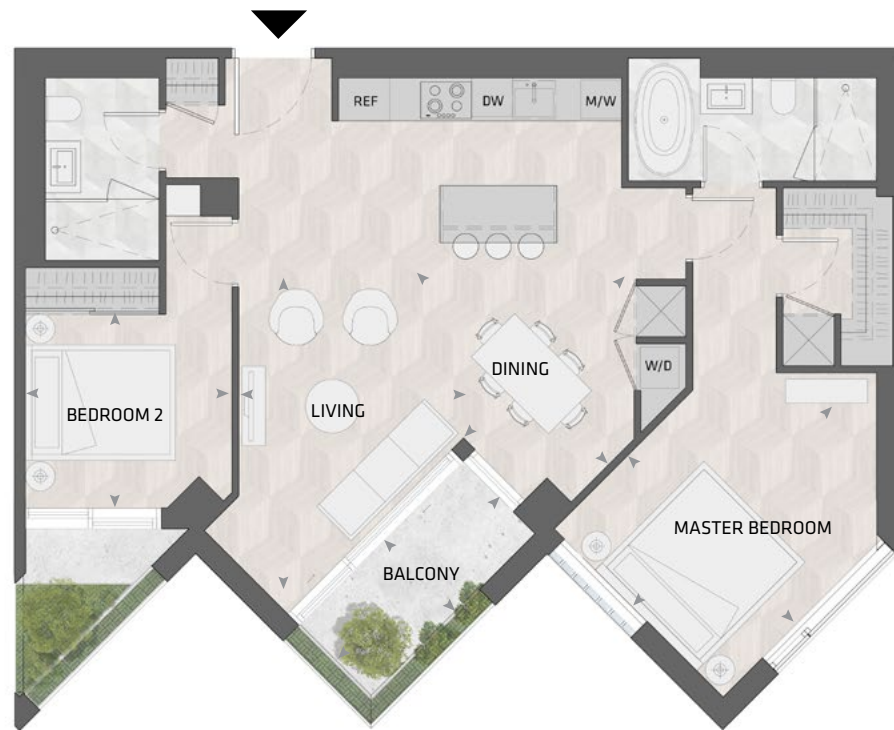


**SOUTH MOUNTAIN KEYPLAN**

All dimensions and specifications are approximate. Certain plans are reverse or mirror image. Balcony square footages are estimated and may vary from that stated. Please see Sales Representative for details. Furniture not included. Refer to key plan for unit location and orientation. E. & O.E.

# KING

## HOME 702 5



2BD.74

**2 Bedroom**  
**2 Bathroom**

**Total Living:**  
**1210 ft<sup>2</sup>**

Interior Living:  
1094 ft<sup>2</sup>

Exterior Living:  
116

<b>LIVING</b>	13' 2" X 10' 10"
<b>DINING</b>	11' 3" X 13' 2"
<b>MASTER BD</b>	12' 11" X 11' 6"
<b>BEDROOM 2</b>	9' 11" X 13' 2"
<b>BALCONY</b>	11' 0" X 4' 11"

COURTYARD



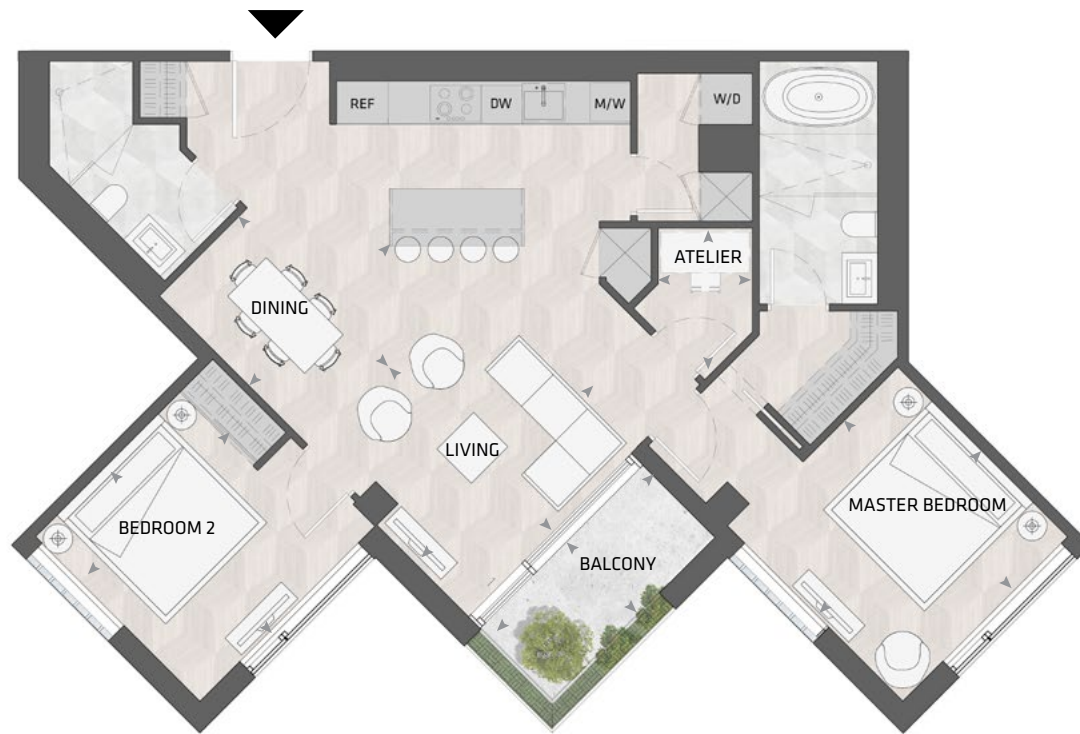
**SOUTH MOUNTAIN KEYPLAN**

All dimensions and specifications are approximate. Certain plans are reverse or mirror image. Balcony square footages are estimated and may vary from that stated. Please see Sales Representative for details. Furniture not included. Refer to key plan for unit location and orientation. E. & O.E.



# KING

## HOME 703 5



2BD.67C

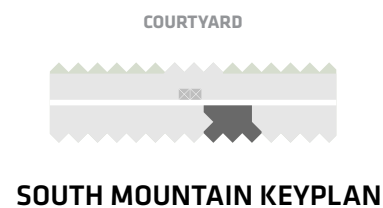
**2 Bedroom + Atelier**  
**2 Bathroom**

**Total Living:**  
**1211 ft<sup>2</sup>**

Interior Living:  
1139 ft<sup>2</sup>

Exterior Living:  
72 ft<sup>2</sup>

<b>LIVING</b>	12' 3" X 11' 7"
<b>DINING</b>	9' 7" X 9' 8"
<b>MASTER BD</b>	11' 0" x 11' 4"
<b>BEDROOM 2</b>	9' 8" x 11' 1"
<b>ATELIER</b>	4' 7" x 5' 0"
<b>BALCONY</b>	11' 0" x 4' 11"



All dimensions and specifications are approximate. Certain plans are reverse or mirror image. Balcony square footages are estimated and may vary from that stated. Please see Sales Representative for details. Furniture not included. Refer to key plan for unit location and orientation. E. & O.E.

# KING

## HOME 705 5



1BD.01B

**1 Bedroom + Atelier**  
**1 Bathroom**

**Total Living:**  
**852 ft<sup>2</sup>**

Interior Living:  
709 ft<sup>2</sup>

Exterior Living:  
143 ft<sup>2</sup>

<b>LIVING</b>	17' 3" X 9' 6"
<b>DINING</b>	12' 8" X 9' 7"
<b>BEDROOM</b>	10' 10" X 8' 10"
<b>ATELIER</b>	6' 2" X 5' 9"
<b>TERRACE</b>	6' 8" X 9' 1"

COURTYARD



**SOUTH MOUNTAIN KEYPLAN**

All dimensions and specifications are approximate. Certain plans are reverse or mirror image. Balcony square footages are estimated and may vary from that stated. Please see Sales Representative for details. Furniture not included. Refer to key plan for unit location and orientation. E. & O.E.

# KING

## HOME 706 5



1BD.18B

**1 Bedroom + Atelier**  
**1 Bathroom**

**Total Living:**  
**812 ft<sup>2</sup>**

Interior Living:  
669 ft<sup>2</sup>

Exterior Living:  
143 ft<sup>2</sup>

<b>LIVING</b>	11' 9" X 8' 4"
<b>DINING</b>	7' 6" X 10' 6"
<b>BEDROOM</b>	11' 2" X 9' 4"
<b>ATELIER</b>	4' 10" X 6' 2"
<b>TERRACE</b>	9' 1" X 9' 1"

COURTYARD

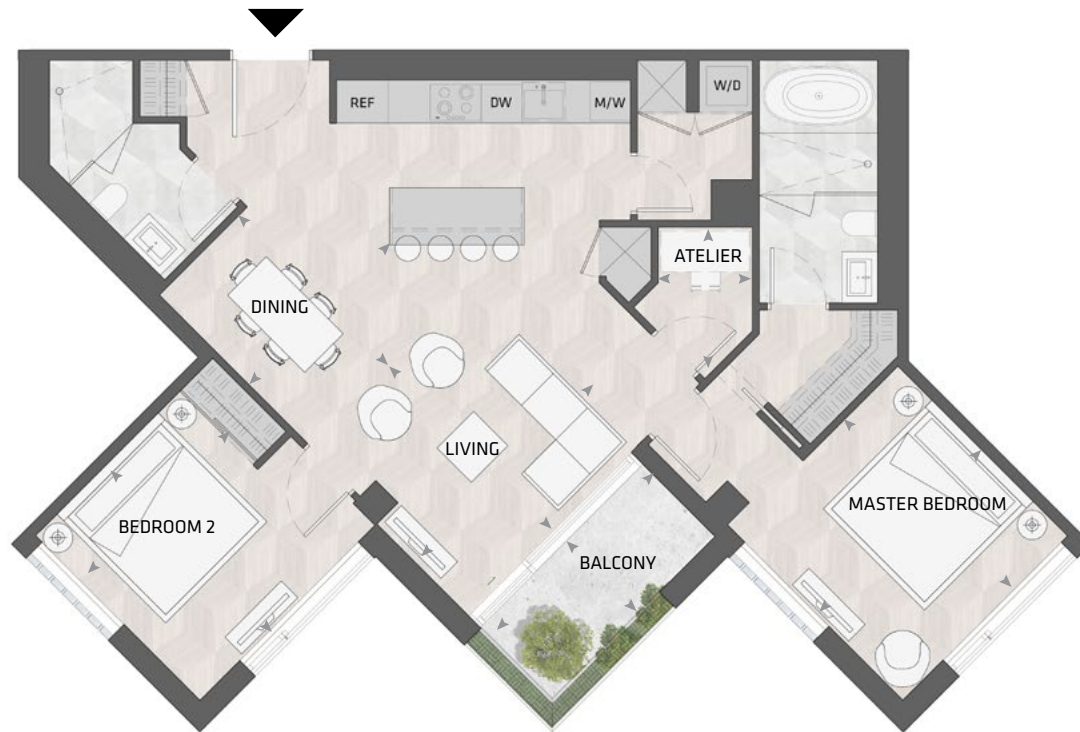


**SOUTH MOUNTAIN KEYPLAN**

All dimensions and specifications are approximate. Certain plans are reverse or mirror image. Balcony square footages are estimated and may vary from that stated. Please see Sales Representative for details. Furniture not included. Refer to key plan for unit location and orientation. E. & O.E.

# KING

## HOME 707 5



2BD.67A

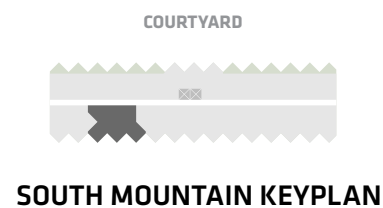
**2 Bedroom + Atelier**  
**2 Bathroom**

**Total Living:**  
**1211 ft<sup>2</sup>**

Interior Living:  
1139 ft<sup>2</sup>

Exterior Living:  
72 ft<sup>2</sup>

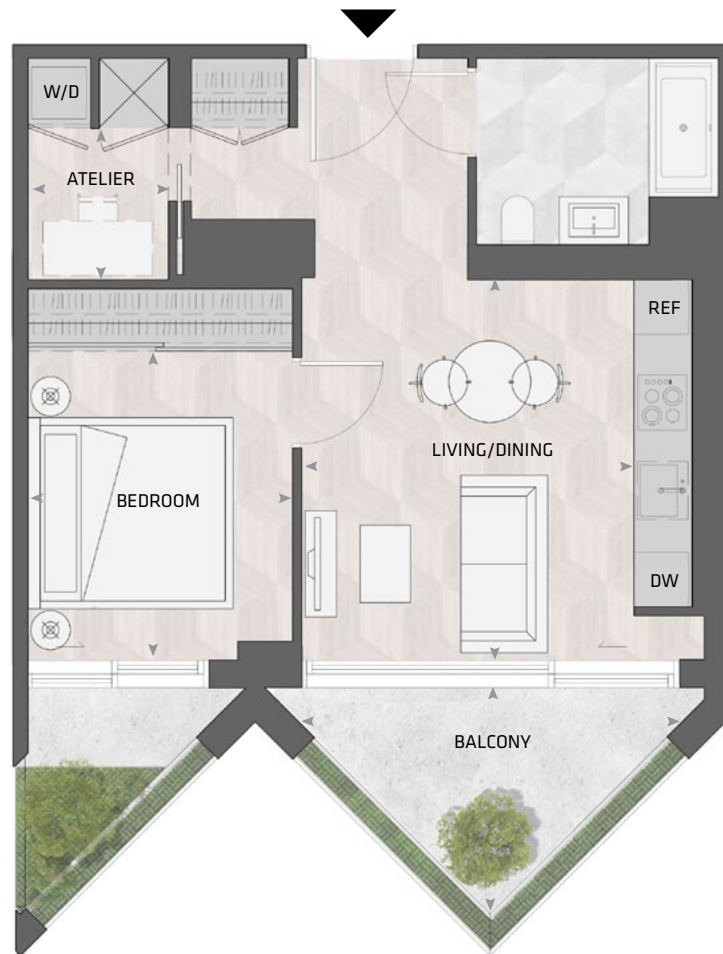
<b>LIVING</b>	12' 3" X 11' 7"
<b>DINING</b>	9' 7" X 9' 8"
<b>MASTER BD</b>	11' 0" x 11' 4"
<b>BEDROOM 2</b>	9' 8" x 11' 1"
<b>ATELIER</b>	4' 7" x 5' 0"
<b>BALCONY</b>	11' 0" x 4' 11"



All dimensions and specifications are approximate. Certain plans are reverse or mirror image. Balcony square footages are estimated and may vary from that stated. Please see Sales Representative for details. Furniture not included. Refer to key plan for unit location and orientation. E. & O.E.

# KING

## HOME 708 5



1BD.06

**1 Bedroom + Atelier**  
**1 Bathroom**

**Total Living:**  
**725 ft<sup>2</sup>**

Interior Living:  
593 ft<sup>2</sup>

Exterior Living:  
132 ft<sup>2</sup>

<b>LIVING/ DINING</b>	13' 11" X 12' 0"
<b>BEDROOM</b>	11' 4" X 9' 6"
<b>ATELIER</b>	5' 6" X 5' 1"
<b>BALCONY</b>	13' X 7' 9"

COURTYARD

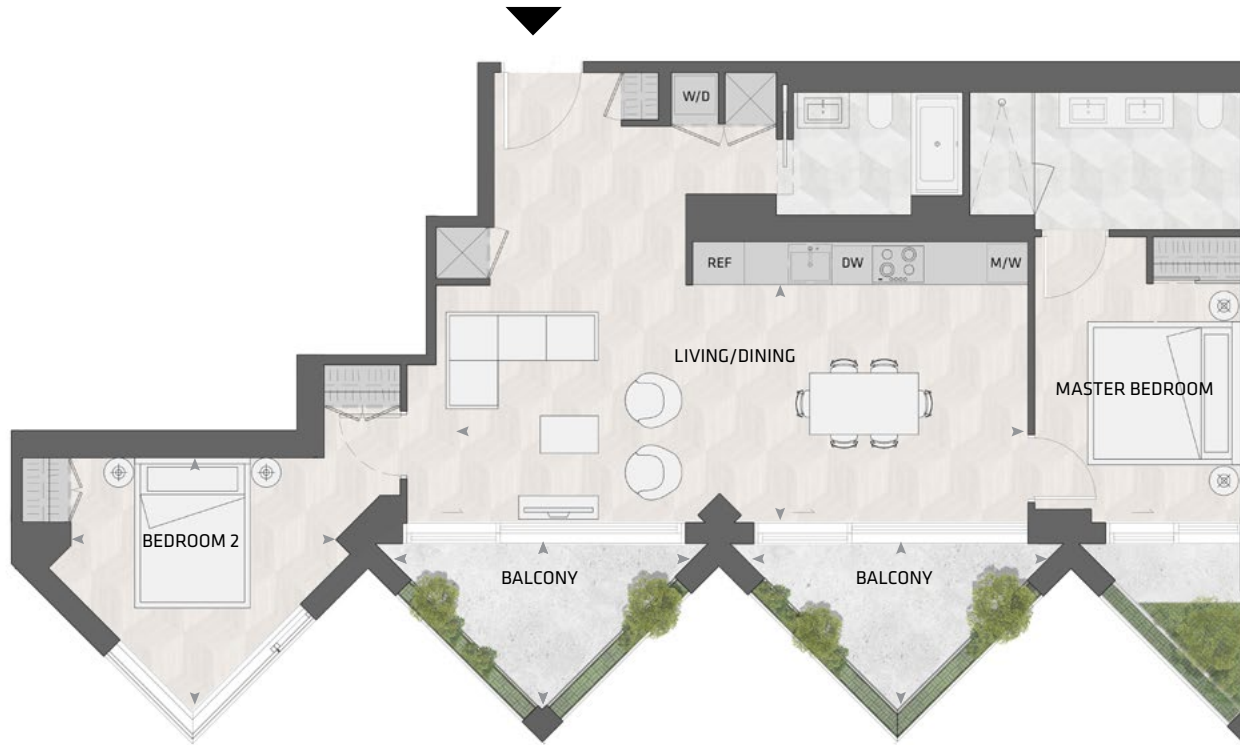


**SOUTH MOUNTAIN KEYPLAN**

All dimensions and specifications are approximate. Certain plans are reverse or mirror image. Balcony square footages are estimated and may vary from that stated. Please see Sales Representative for details. Furniture not included. Refer to key plan for unit location and orientation. E. & O.E.

# KING

## HOME 709 5



2BD.74

**2 Bedroom**  
**2 Bathroom**

**Total Living:**  
**1319 ft<sup>2</sup>**

Interior Living:  
1098 ft<sup>2</sup>

Exterior Living:  
221

<b>LIVING/ DINING</b>	28' 6" X 11' 8"
<b>MASTER BD</b>	11' 9" X 9' 11"
<b>BEDROOM 2</b>	12' 3" X 12' 2"
<b>BALCONY</b>	13' 0" X 7' 9"

COURTYARD



**SOUTH MOUNTAIN KEYPLAN**

All dimensions and specifications are approximate. Certain plans are reverse or mirror image. Balcony square footages are estimated and may vary from that stated. Please see Sales Representative for details. Furniture not included. Refer to key plan for unit location and orientation. E. & O.E.

# KING

## HOME 801 5



1BD.02

**1 Bedroom + Atelier**  
**1 Bathroom**

**Total Living:**  
**618 ft<sup>2</sup>**

Interior Living:  
618 ft<sup>2</sup>

Exterior Living:  
N/A

<b>LIVING</b>	10' 2" X 8' 8"
<b>DINING</b>	7' 3" X 9' 6"
<b>BEDROOM</b>	14' 5" X 12' 3"
<b>ATELIER</b>	5' 5" X 5' 5"

COURTYARD



**SOUTH MOUNTAIN KEYPLAN**

All dimensions and specifications are approximate. Certain plans are reverse or mirror image. Balcony square footages are estimated and may vary from that stated. Please see Sales Representative for details. Furniture not included. Refer to key plan for unit location and orientation. E. & O.E.

# KING

## HOME 802 5



2BD.74

**2 Bedroom**  
**2 Bathroom**

**Total Living:**  
**1210 ft<sup>2</sup>**

Interior Living:  
1094 ft<sup>2</sup>

Exterior Living:  
116

<b>LIVING</b>	13' 2" X 10' 10"
<b>DINING</b>	11' 3" X 13' 2"
<b>MASTER BD</b>	12' 11" X 11' 6"
<b>BEDROOM 2</b>	9' 11" X 13' 2"
<b>BALCONY</b>	11' 0" X 4' 11"

COURTYARD



**SOUTH MOUNTAIN KEYPLAN**

All dimensions and specifications are approximate. Certain plans are reverse or mirror image. Balcony square footages are estimated and may vary from that stated. Please see Sales Representative for details. Furniture not included. Refer to key plan for unit location and orientation. E. & O.E.



# KING

## HOME 803 5



1BD.05A

**1 Bedroom + Atelier**  
**1 Bathroom**

**Total Living:**  
**725 ft<sup>2</sup>**

Interior Living:  
652 ft<sup>2</sup>

Exterior Living:  
72 ft<sup>2</sup>

<b>LIVING</b>	11' 2" x 11' 8"
<b>DINING</b>	10' 1" x 8' 9"
<b>BEDROOM</b>	10' 6" x 11' 2"
<b>ATELIER</b>	10' 1" x 6' 8"
<b>BALCONY</b>	11' 0" x 4' 11"

COURTYARD



**SOUTH MOUNTAIN KEYPLAN**

All dimensions and specifications are approximate. Certain plans are reverse or mirror image. Balcony square footages are estimated and may vary from that stated. Please see Sales Representative for details. Furniture not included. Refer to key plan for unit location and orientation. E. & O.E.

# KING

## HOME 805 5



3BD.35B

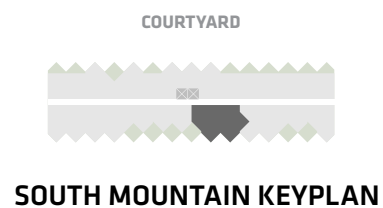
**3 Bedroom  
2 Bathroom**

**Total Living:  
1353 ft<sup>2</sup>**

Interior Living:  
1138 ft<sup>2</sup>

Exterior Living:  
215 ft<sup>2</sup>

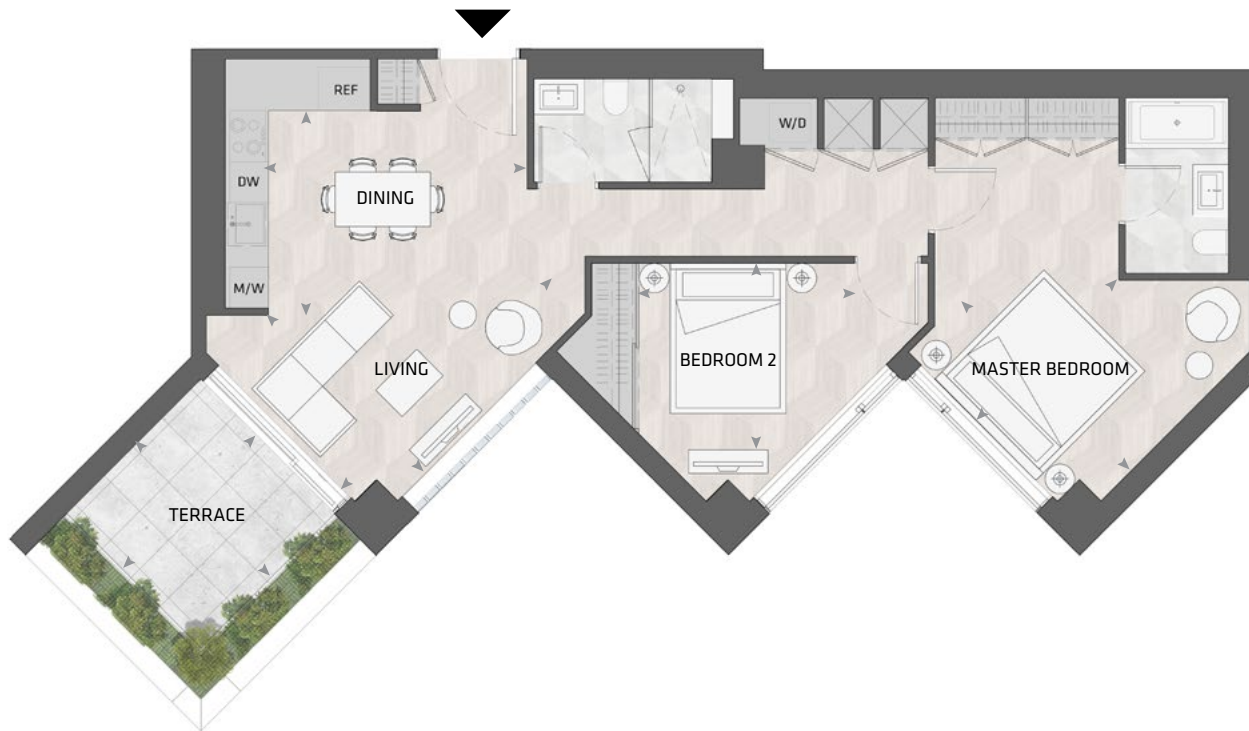
<b>LIVING</b>	10' 9" X 8' 7"
<b>DINING</b>	12' 5" X 7' 2"
<b>MASTER BD</b>	9' 10" x 9' 10"
<b>BEDROOM 2</b>	10' 3" x 10' 10"
<b>BEDROOM 3</b>	11' 7" x 9' 0"
<b>BALCONY</b>	11' 0" X 4' 11"
<b>TERRACE</b>	9' 1" X 6' 8"



All dimensions and specifications are approximate. Certain plans are reverse or mirror image. Balcony square footages are estimated and may vary from that stated. Please see Sales Representative for details. Furniture not included. Refer to key plan for unit location and orientation. E. & O.E.

# KING

## HOME 806 5



2BD.69

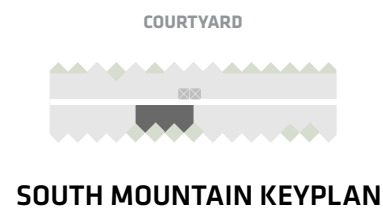
**2 Bedroom**  
**2 Bathroom**

**Total Living:**  
**1143 ft<sup>2</sup>**

Interior Living:  
1000 ft<sup>2</sup>

Exterior Living:  
143 ft<sup>2</sup>

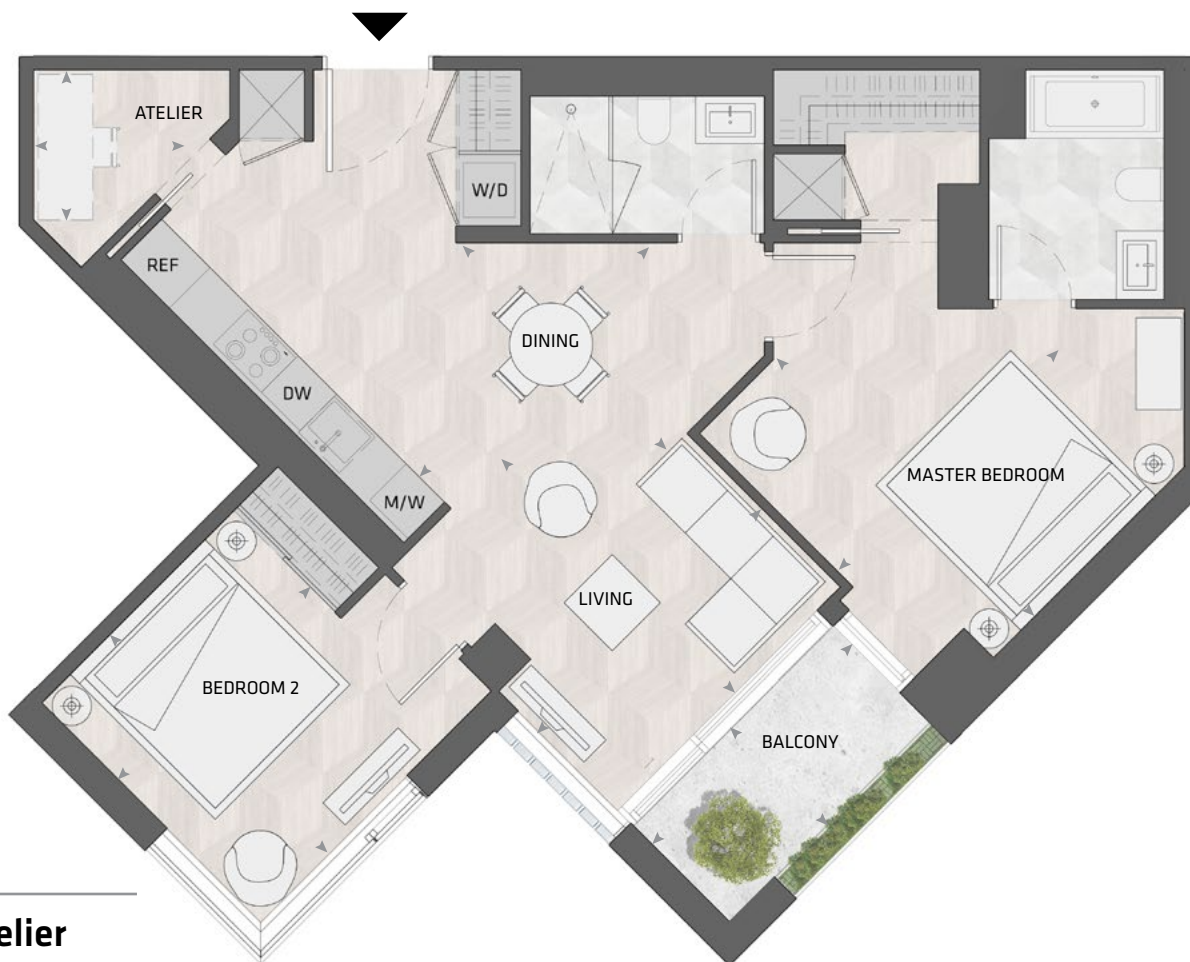
<b>LIVING</b>	11' 11" X 10' 11"
<b>DINING</b>	12' 7" X 9' 6"
<b>MASTER BD</b>	9' 8" X 12' 1"
<b>BEDROOM 2</b>	12' 1" X 8' 9"
<b>TERRACE</b>	9' 1" X 9' 1"



All dimensions and specifications are approximate. Certain plans are reverse or mirror image. Balcony square footages are estimated and may vary from that stated. Please see Sales Representative for details. Furniture not included. Refer to key plan for unit location and orientation. E. & O.E.

# KING

## HOME 807 5



2BD.68

**2 Bedroom + Atelier**  
**2 Bathroom**

**Total Living:**  
**1061 ft<sup>2</sup>**

Interior Living:  
997 ft<sup>2</sup>

Exterior Living:  
64 ft<sup>2</sup>

<b>LIVING</b>	11' 8" x 12' 0"
<b>DINING</b>	11' 11" x 10' 9"
<b>MASTER BD</b>	11' 3" x 13' 3"
<b>BEDROOM 2</b>	9' 10" x 11' 2"
<b>ATELIER</b>	5' 5" x 5' 5"
<b>BALCONY</b>	9' 6" x 4' 11"

COURTYARD

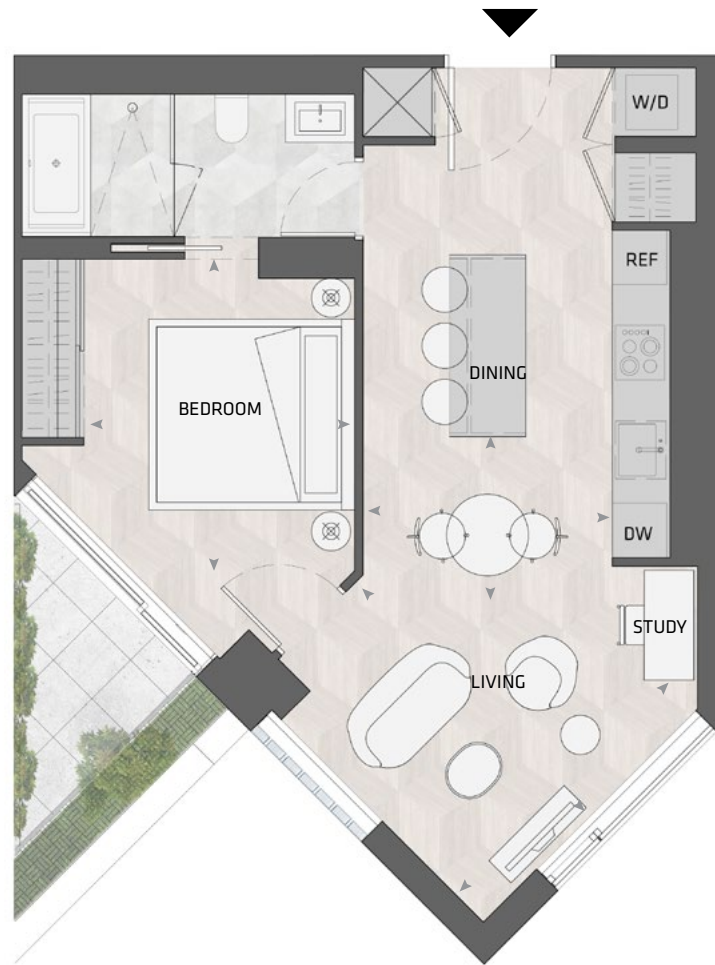


**SOUTH MOUNTAIN KEYPLAN**

All dimensions and specifications are approximate. Certain plans are reverse or mirror image. Balcony square footages are estimated and may vary from that stated. Please see Sales Representative for details. Furniture not included. Refer to key plan for unit location and orientation. E. & O.E.

# KING

## HOME 808 5



1BD.13

**1 Bedroom + Study  
1 Bathroom**

**Total Living:  
726 ft<sup>2</sup>**

Interior Living:  
654 ft<sup>2</sup>

Exterior Living:  
72 ft<sup>2</sup>

<b>LIVING</b>	12' 4" X 12' 0"
<b>DINING</b>	9' 0" X 6' 6"
<b>BEDROOM</b>	9' 9" X 11' 3"

COURTYARD



**SOUTH MOUNTAIN KEYPLAN**

All dimensions and specifications are approximate. Certain plans are reverse or mirror image. Balcony square footages are estimated and may vary from that stated. Please see Sales Representative for details. Furniture not included. Refer to key plan for unit location and orientation. E. & O.E.

# KING

## HOME 809 5



2BD.75A

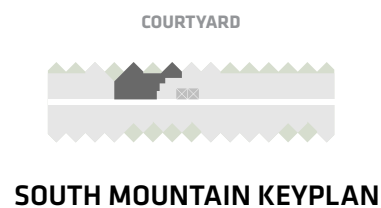
**2 Bedroom**  
**2 Bathroom**

**Total Living:**  
**1318 ft<sup>2</sup>**

Interior Living:  
1158 ft<sup>2</sup>

Exterior Living:  
160 ft<sup>2</sup>

<b>LIVING</b>	12' 8" X 13' 5"
<b>DINING</b>	15' 1" x 7' 10"
<b>MASTER BD</b>	13' 1' X 9' 10"
<b>BEDROOM 2</b>	14' 4" x 10' 4"
<b>BALCONY</b>	13' 0" x 7' 9"
<b>TERRACE</b>	6' 4" x 3' 6"



All dimensions and specifications are approximate. Certain plans are reverse or mirror image. Balcony square footages are estimated and may vary from that stated. Please see Sales Representative for details. Furniture not included. Refer to key plan for unit location and orientation. E. & O.E.

# KING

## HOME 901 5



1BD.02

**1 Bedroom + Atelier**  
**1 Bathroom**

**Total Living:**  
**618 ft<sup>2</sup>**

Interior Living:  
618 ft<sup>2</sup>

Exterior Living:  
N/A

<b>LIVING</b>	10' 2" X 8' 8"
<b>DINING</b>	7' 3" X 9' 6"
<b>BEDROOM</b>	14' 5" X 12' 3"
<b>ATELIER</b>	5' 5" X 5' 5"

COURTYARD



**SOUTH MOUNTAIN KEYPLAN**

All dimensions and specifications are approximate. Certain plans are reverse or mirror image. Balcony square footages are estimated and may vary from that stated. Please see Sales Representative for details. Furniture not included. Refer to key plan for unit location and orientation. E. & O.E.

# KING

## HOME 902 5



2BD.76

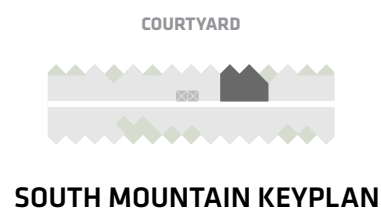
**2 Bedroom + Atelier**  
**2 Bathroom**

**Total Living:**  
**1208 ft<sup>2</sup>**

Interior Living:  
1136 ft<sup>2</sup>

Exterior Living:  
72 ft<sup>2</sup>

<b>LIVING</b>	10' 0" x 9' 3"
<b>DINING</b>	10' 11" x 11' 9"
<b>MASTER BD</b>	12' 0" x 11' 8"
<b>BEDROOM 2</b>	9' 8" x 9' 2"
<b>ATELIER</b>	6' 10" x 6' 10"
<b>TERRACE</b>	3' 6" x 6' 4"



All dimensions and specifications are approximate. Certain plans are reverse or mirror image. Balcony square footages are estimated and may vary from that stated. Please see Sales Representative for details. Furniture not included. Refer to key plan for unit location and orientation. E. & O.E.



# KING

## HOME 903 5



2BD.46

**2 Bedroom  
2 Bathroom**

**Total Living:  
889 ft<sup>2</sup>**

Interior Living:  
817 ft<sup>2</sup>

Exterior Living:  
72 ft<sup>2</sup>

<b>LIVING</b>	11' 4" X 9' 0"
<b>DINING</b>	11' 3" X 10' 1"
<b>MASTER BD</b>	9' 1" X 11' 11"
<b>BEDROOM 2</b>	11' 6" X 8' 6"
<b>BALCONY</b>	11' 0" X 4' 11"

COURTYARD



**SOUTH MOUNTAIN KEYPLAN**

All dimensions and specifications are approximate. Certain plans are reverse or mirror image. Balcony square footages are estimated and may vary from that stated. Please see Sales Representative for details. Furniture not included. Refer to key plan for unit location and orientation. E. & O.E.

# KING

## HOME 905 5



2BD.77

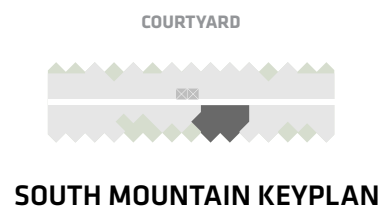
**2 Bedroom + Atelier**  
**2 Bathroom**

**Total Living:**  
**1213 ft<sup>2</sup>**

Interior Living:  
1141 ft<sup>2</sup>

Exterior Living:  
72 ft<sup>2</sup>

<b>LIVING/ DINING</b>	10' 6" X 16' 9"
<b>MASTER BD</b>	12' 0" X 9' 4"
<b>BEDROOM 2</b>	9' 5" - 9' 10"
<b>ATELIER</b>	9' 2" X 7' 9"
<b>BALCONY</b>	11' 0" X 4' 11"



All dimensions and specifications are approximate. Certain plans are reverse or mirror image. Balcony square footages are estimated and may vary from that stated. Please see Sales Representative for details. Furniture not included. Refer to key plan for unit location and orientation. E. & O.E.

# KING

## HOME 906 5



2BD.70

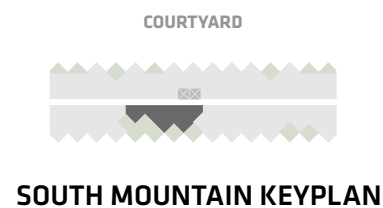
**2 Bedroom**  
**2 Bathroom**

**Total Living:**  
**1179 ft<sup>2</sup>**

Interior Living:  
1036 ft<sup>2</sup>

Exterior Living:  
143 ft<sup>2</sup>

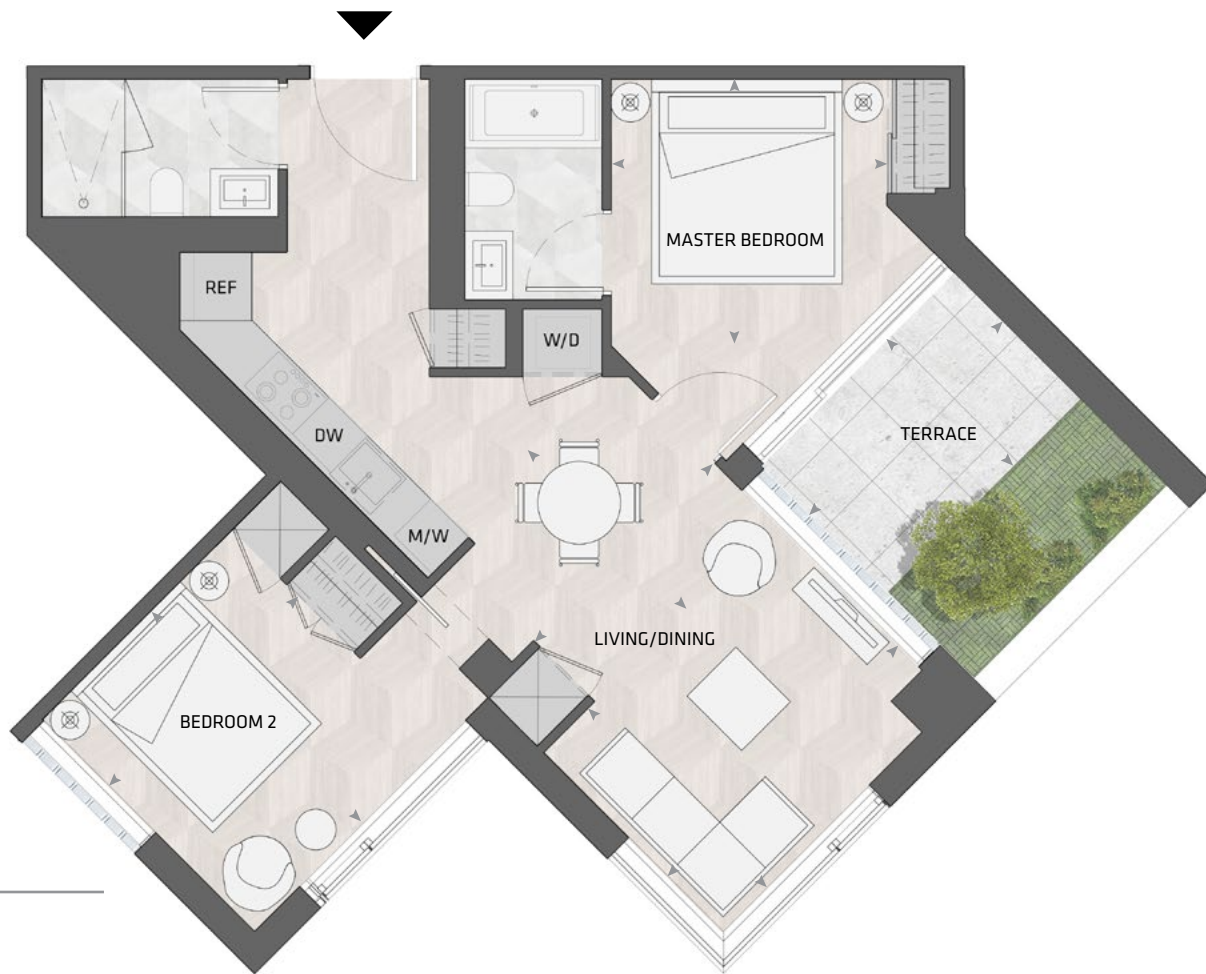
<b>LIVING</b>	9' 4" X 12' 10"
<b>DINING</b>	11' 0" X 9' 0"
<b>MASTER BD</b>	11' 4" X 10' 9"
<b>BEDROOM 2</b>	10' 9" X 9' 4"
<b>TERRACE</b>	9' 1" X 9' 1"



All dimensions and specifications are approximate. Certain plans are reverse or mirror image. Balcony square footages are estimated and may vary from that stated. Please see Sales Representative for details. Furniture not included. Refer to key plan for unit location and orientation. E. & O.E.

# KING

## HOME 907 5



2BD.30

**2 Bedroom  
2 Bathroom**

**Total Living:  
950 ft<sup>2</sup>**

Interior Living:  
830 ft<sup>2</sup>

Exterior Living:  
120 ft<sup>2</sup>

<b>LIVING</b>	11' 10" X 9' 2"
<b>DINING</b>	9' 2" X 9' 11"
<b>MASTER BD</b>	9' 11" X 9' 8"
<b>BEDROOM 2</b>	9' 8" X 11' 1"
<b>TERRACE</b>	10' 0" X 6' 9"

COURTYARD



**SOUTH MOUNTAIN KEYPLAN**

All dimensions and specifications are approximate. Certain plans are reverse or mirror image. Balcony square footages are estimated and may vary from that stated. Please see Sales Representative for details. Furniture not included. Refer to key plan for unit location and orientation. E. & O.E.

# KING

## HOME 908 5



1BD.13

**1 Bedroom + Study**  
**1 Bathroom**

**Total Living:**  
**654 ft<sup>2</sup>**

Interior Living:  
654 ft<sup>2</sup>

Exterior Living:  
N/A

<b>LIVING</b>	12' 4" X 12' 0"
<b>DINING</b>	9' 0" X 6' 6"
<b>BEDROOM</b>	9' 9" X 11' 3"

COURTYARD

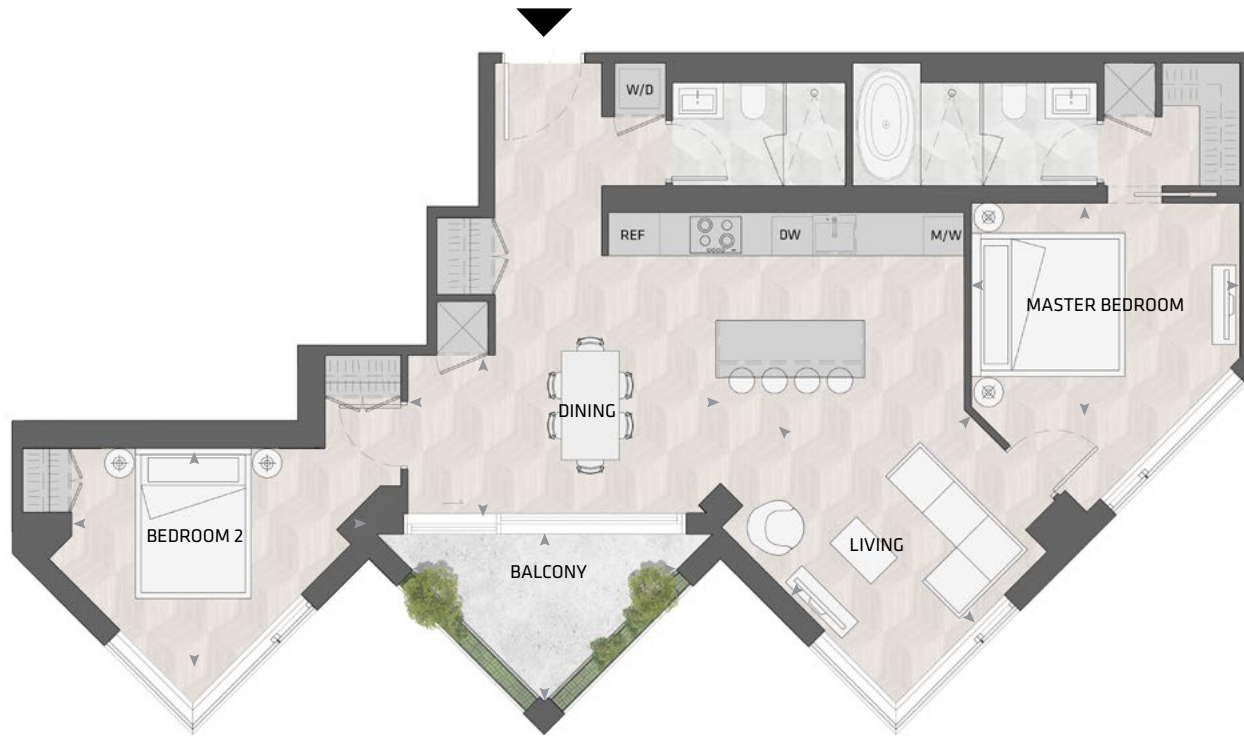


**SOUTH MOUNTAIN KEYPLAN**

All dimensions and specifications are approximate. Certain plans are reverse or mirror image. Balcony square footages are estimated and may vary from that stated. Please see Sales Representative for details. Furniture not included. Refer to key plan for unit location and orientation. E. & O.E.

# KING

## HOME 909 5



2BD.75B

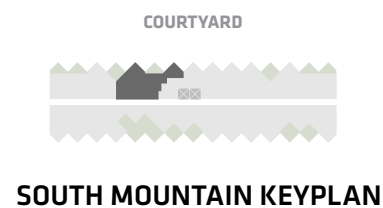
**2 Bedroom**  
**2 Bathroom**

**Total Living:**  
**1246 ft<sup>2</sup>**

Interior Living:  
1158 ft<sup>2</sup>

Exterior Living:  
88 ft<sup>2</sup>

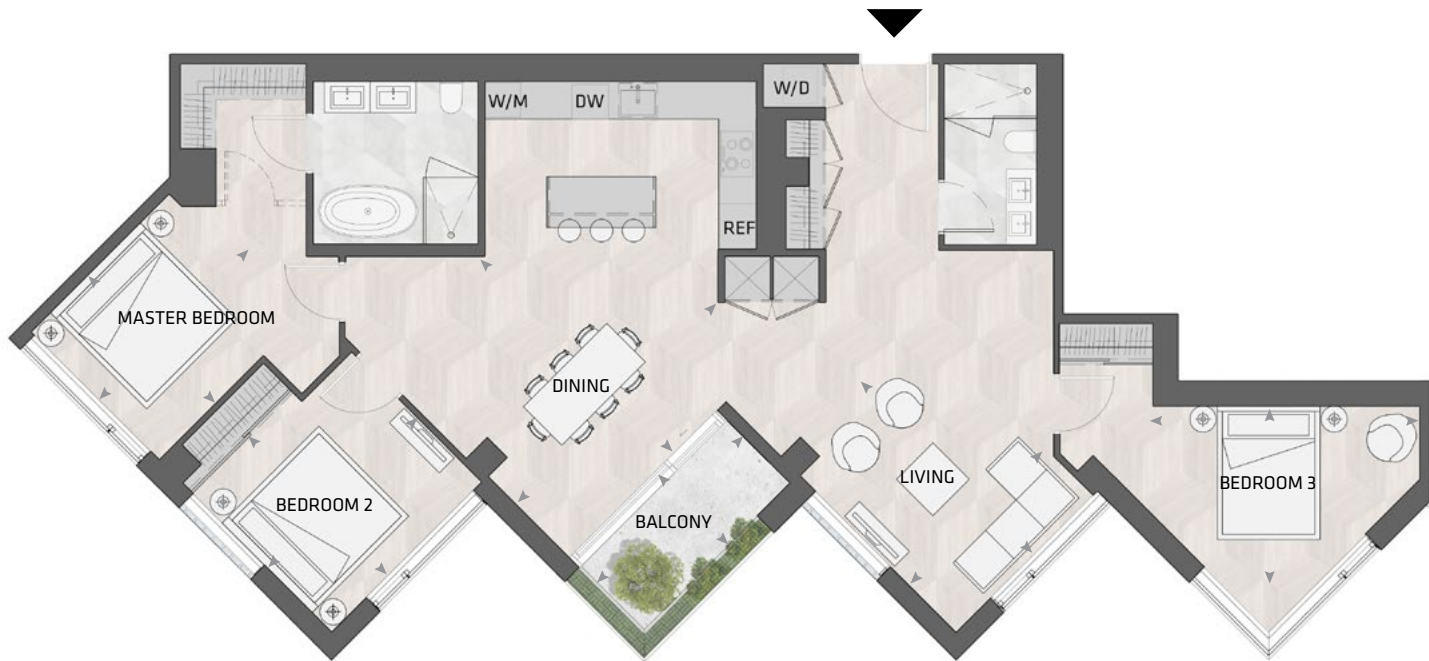
<b>LIVING</b>	12' 8" X 13' 5"
<b>DINING</b>	15' 1" x 7' 10"
<b>MASTER BD</b>	13' 1' X 9' 10"
<b>BEDROOM 2</b>	14' 4" x 10' 4"
<b>BALCONY</b>	13' 0" x 7' 9"



All dimensions and specifications are approximate. Certain plans are reverse or mirror image. Balcony square footages are estimated and may vary from that stated. Please see Sales Representative for details. Furniture not included. Refer to key plan for unit location and orientation. E. & O.E.

# KING

## HOME 1001 5



3BD.55

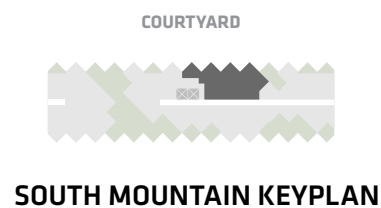
**3 Bedroom  
2 Bathroom**

**Total Living:  
1663 ft<sup>2</sup>**

Interior Living:  
1591 ft<sup>2</sup>

Exterior Living:  
72 ft<sup>2</sup>

<b>LIVING</b>	10' 6" X 12' 0"
<b>DINING</b>	15' 2" X 12' 0"
<b>MASTER BD</b>	10' 10" X 9' 10"
<b>BEDROOM 2</b>	10' 7" X 11' 8"
<b>BEDROOM 3</b>	14' 5" X 8' 9"
<b>ATELIER</b>	5' 4" X 5' 11"
<b>BALCONY</b>	11' 0" X 4' 11"



All dimensions and specifications are approximate. Certain plans are reverse or mirror image. Balcony square footages are estimated and may vary from that stated. Please see Sales Representative for details. Furniture not included. Refer to key plan for unit location and orientation. E. & O.E.

# KING

## HOME 1002 5



3BD.48

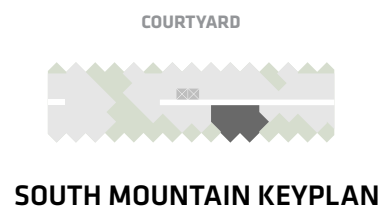
**3 Bedroom  
2 Bathroom**

**Total Living:  
1540 ft<sup>2</sup>**

Interior Living:  
1230 ft<sup>2</sup>

Exterior Living:  
310 ft<sup>2</sup>

<b>LIVING</b>	12' 9" X 11' 8"
<b>DINING</b>	13' 7" X 14' 0"
<b>MASTER BD</b>	15' 8" X 14' 5"
<b>BEDROOM 2</b>	11' 6" X 10' 4"
<b>BEDROOM 3</b>	8' 6" X 8' 4"
<b>TERRACE A</b>	8' 3" X 6' 8"
<b>TERRACE B</b>	9' 1" X 6' 8"



All dimensions and specifications are approximate. Certain plans are reverse or mirror image. Balcony square footages are estimated and may vary from that stated. Please see Sales Representative for details. Furniture not included. Refer to key plan for unit location and orientation. E. & O.E.



# KING

## HOME 1003 5



3BD.54

**3 Bedroom + Family  
2 Bathroom**

**Total Living:  
2569 ft<sup>2</sup>**

Interior Living:  
2028 ft<sup>2</sup>

Exterior Living:  
541 ft<sup>2</sup>

<b>LIVING</b>	11' 8" X 13' 9"
<b>DINING</b>	12' 0" X 12' 0"
<b>MASTER BD</b>	11' 0" X 18' 0"
<b>BEDROOM 2</b>	11' 9" X 10' 9"
<b>BEDROOM 3</b>	14' 2" X 10' 4"
<b>STUDY</b>	6' 8" X 6' 8"
<b>TERRACE A</b>	6' 8" X 9' 1"
<b>TERRACE B</b>	6' 8" X 8' 3"
<b>BALCONY</b>	13' 0" X 7' 9"

COURTYARD



**SOUTH MOUNTAIN KEYPLAN**

All dimensions and specifications are approximate. Certain plans are reverse or mirror image. Balcony square footages are estimated and may vary from that stated. Please see Sales Representative for details. Furniture not included. Refer to key plan for unit location and orientation. E. & O.E.

# KING

## HOME 1101 S



1BD.02

**1 Bedroom + Atelier**  
**1 Bathroom**

**Total Living:**  
**618 ft<sup>2</sup>**

Interior Living:  
618 ft<sup>2</sup>

Exterior Living:  
N/A

<b>LIVING</b>	10' 2" X 8' 8"
<b>DINING</b>	7' 3" X 9' 6"
<b>BEDROOM</b>	14' 5" X 12' 3"
<b>ATELIER</b>	5' 5" X 5' 5"

COURTYARD



**SOUTH MOUNTAIN KEYPLAN**

All dimensions and specifications are approximate. Certain plans are reverse or mirror image. Balcony square footages are estimated and may vary from that stated. Please see Sales Representative for details. Furniture not included. Refer to key plan for unit location and orientation. E. & O.E.

# KING

## HOME 1102 5



3BD.56

**3 Bedroom + Atelier + Family  
2 Bathroom**

**Total Living:  
2338 ft<sup>2</sup>**

Interior Living:  
1935 ft<sup>2</sup>

Exterior Living:  
403 ft<sup>2</sup>

<b>LIVING</b>	13' 1" X 11' 7"
<b>FAMILY RM</b>	13' 7" X 11' 1"
<b>DINING</b>	10' 8" X 11' 1"
<b>MASTER BD</b>	14' 1" X 12' 8"
<b>BEDROOM 2</b>	11' 2" X 13' 4"
<b>BEDROOM 3</b>	13' 6" X 10' 5"
<b>ATELIER</b>	7' 3" X 7' 5"
<b>TERRACE A</b>	9' 1" X 9' 1"
<b>TERRACE B</b>	8' 3" X 6' 8"

COURTYARD



**SOUTH MOUNTAIN KEYPLAN**

All dimensions and specifications are approximate. Certain plans are reverse or mirror image. Balcony square footages are estimated and may vary from that stated. Please see Sales Representative for details. Furniture not included. Refer to key plan for unit location and orientation. E. & O.E.

# KING

## HOME 1103 5



2BD.71

**2 Bedroom + Study**  
**2 Bathroom**

**Total Living:**  
**1223 ft<sup>2</sup>**

Interior Living:  
1080 ft<sup>2</sup>

Exterior Living:  
143 ft<sup>2</sup>

<b>LIVING</b>	12' 7" x 11' 11"
<b>DINING</b>	10' 11" x 10' 7"
<b>MASTER BD</b>	11' 0" x 11' 10"
<b>BEDROOM 2</b>	9' 11" x 12' 0"
<b>TERRACE</b>	9' 1" x 6' 8"

COURTYARD



**SOUTH MOUNTAIN KEYPLAN**

All dimensions and specifications are approximate. Certain plans are reverse or mirror image. Balcony square footages are estimated and may vary from that stated. Please see Sales Representative for details. Furniture not included. Refer to key plan for unit location and orientation. E. & O.E.

# KING

## HOME 1105 5



3BD.14

**3 Bedroom  
2 Bathroom**

**Total Living:  
1377 ft<sup>2</sup>**

Interior Living:  
1233 ft<sup>2</sup>

Exterior Living:  
144 ft<sup>2</sup>

<b>LIVING</b>	11' 9" X 11' 9"
<b>DINING</b>	11' 10" X 9' 7"
<b>MASTER BD</b>	8' 9" X 10' 0"
<b>BEDROOM 2</b>	8' 6" X 10' 9"
<b>BEDROOM 3</b>	10' 9" X 13' 5"
<b>TERRACE</b>	9' 1" X 6' 8"

COURTYARD



**SOUTH MOUNTAIN KEYPLAN**

All dimensions and specifications are approximate. Certain plans are reverse or mirror image. Balcony square footages are estimated and may vary from that stated. Please see Sales Representative for details. Furniture not included. Refer to key plan for unit location and orientation. E. & O.E.

# KING

## HOME 1201 5



3BD.58

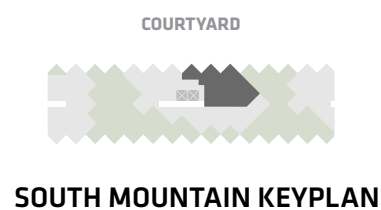
**3 Bedroom  
2 Bathroom**

**Total Living:  
1721 ft<sup>2</sup>**

Interior Living:  
1411 ft<sup>2</sup>

Exterior Living:  
310 ft<sup>2</sup>

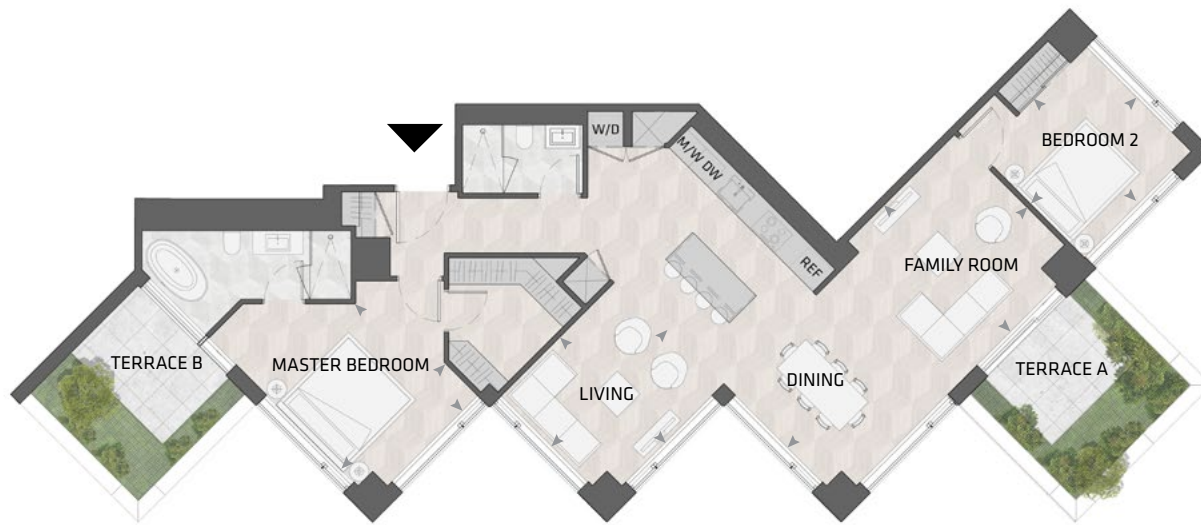
<b>LIVING</b>	12' 0" X 13' 5"
<b>DINING</b>	12' 6" X 10' 1"
<b>MASTER BD</b>	12' 5" X 10' 3"
<b>BEDROOM 2</b>	10' 2" X 11' 0"
<b>BEDROOM 3</b>	10' 4" X 8' 6"
<b>TERRACE</b>	6' 8" X 8' 3"



All dimensions and specifications are approximate. Certain plans are reverse or mirror image. Balcony square footages are estimated and may vary from that stated. Please see Sales Representative for details. Furniture not included. Refer to key plan for unit location and orientation. E. & O.E.

# KING

## HOME 1202 5



2BD.78

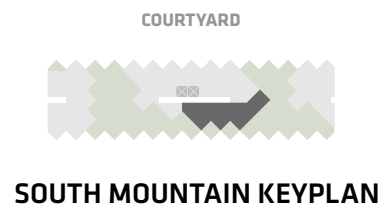
**2 Bedroom + Family  
2 Bathroom**

**Total Living:  
1792 ft<sup>2</sup>**

Interior Living:  
1482 ft<sup>2</sup>

Exterior Living:  
310 ft<sup>2</sup>

<b>LIVING</b>	12' 0" X 10' 9"
<b>FAMILY RM/ DINING</b>	24' 6" X 13' 0"
<b>MASTER BD</b>	10' 9" X 11' 3"
<b>BEDROOM 2</b>	10' 11" X 10' 8"
<b>TERRACE A</b>	8' 3" X 6' 8"
<b>TERRACE B</b>	9' 1" X 6' 8"



All dimensions and specifications are approximate. Certain plans are reverse or mirror image. Balcony square footages are estimated and may vary from that stated. Please see Sales Representative for details. Furniture not included. Refer to key plan for unit location and orientation. E. & O.E.

# KING

## HOME 1203 S



3BD.22

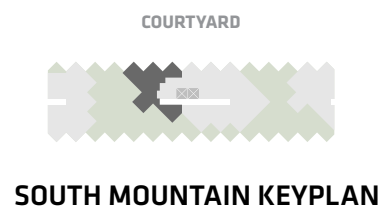
**3 Bedroom  
2 Bathroom**

**Total Living:  
1405 ft<sup>2</sup>**

Interior Living:  
1262 ft<sup>2</sup>

Exterior Living:  
143 ft<sup>2</sup>

<b>LIVING</b>	11' 9" X 13' 5"
<b>DINING</b>	14' 2" X 9' 0"
<b>MASTER BD</b>	9' 10" X 12' 0"
<b>BEDROOM 2</b>	10' 4" X 9' 11"
<b>BEDROOM 3</b>	11' 1" X 10' 9"
<b>TERRACE</b>	9' 1" X 9' 1"

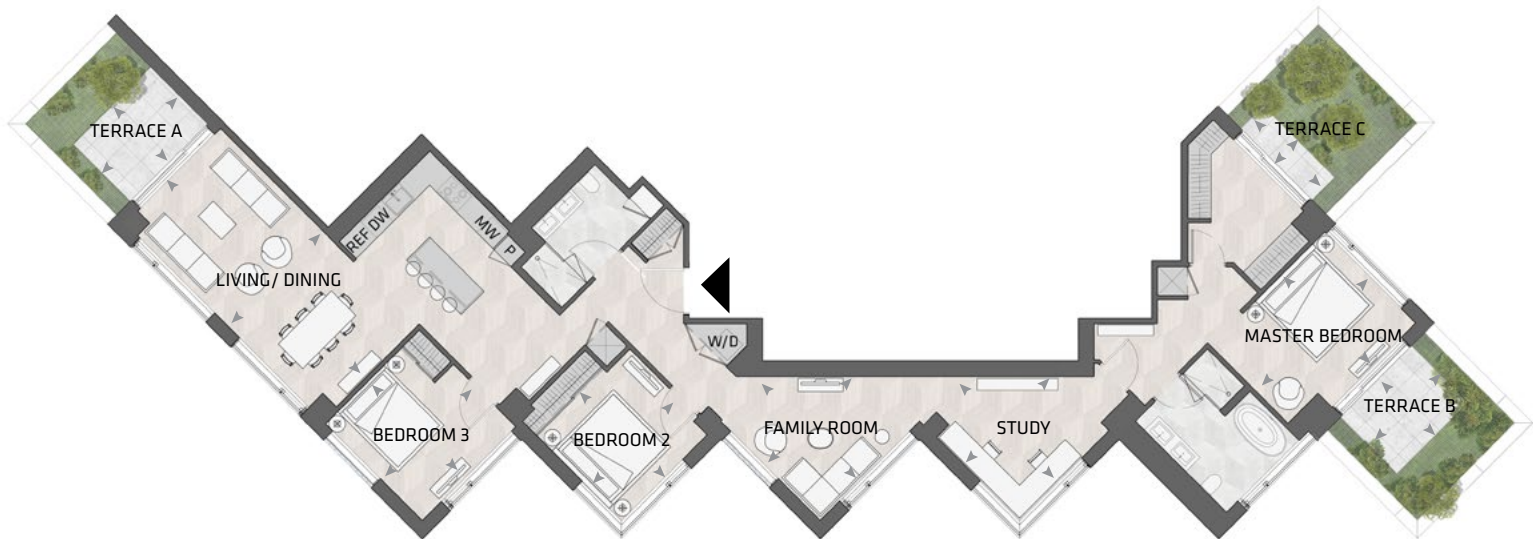


All dimensions and specifications are approximate. Certain plans are reverse or mirror image. Balcony square footages are estimated and may vary from that stated. Please see Sales Representative for details. Furniture not included. Refer to key plan for unit location and orientation. E. & O.E.



# KING

## HOME 1501 S



3BD.41

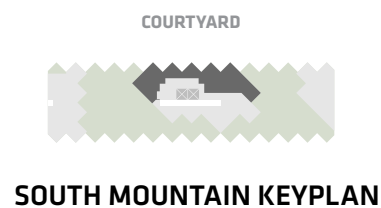
**3 Bedroom + Family + Study  
2 Bathroom**

**Total Living:  
2430 ft<sup>2</sup>**

Interior Living:  
1953 ft<sup>2</sup>

Exterior Living:  
477 ft<sup>2</sup>

<b>LIVING/ DINING</b>	11' 5" X 23' 7"
<b>FAMILY RM</b>	12' 0" X 12' 0"
<b>MASTER BD</b>	13' 7" X 11' 2"
<b>BEDROOM 2</b>	10' 10" X 9' 10"
<b>BEDROOM 3</b>	9' X 9' 10' 0"
<b>STUDY</b>	10' 9" X 10' 0"
<b>TERRACE A</b>	9' 1" X 6' 8"
<b>TERRACE B</b>	8' 3" X 6' 8"
<b>TERRACE C</b>	2' 8" X 8' 3"



All dimensions and specifications are approximate. Certain plans are reverse or mirror image. Balcony square footages are estimated and may vary from that stated. Please see Sales Representative for details. Furniture not included. Refer to key plan for unit location and orientation. E. & O.E.

# KING

## HOME 1502 5



3BD.42

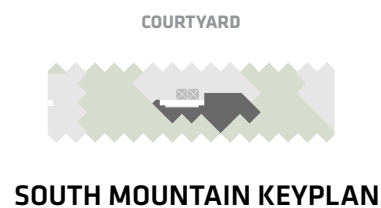
**3 Bedroom + Study**  
**2 Bathroom**

**Total Living:**  
**1680 ft<sup>2</sup>**

Interior Living:  
1393 ft<sup>2</sup>

Exterior Living:  
287 ft<sup>2</sup>

<b>LIVING</b>	9' 5" X 10' 10"
<b>DINING</b>	11' 3" X 8' 8"
<b>MASTER BD</b>	11' 7" X 11' 1"
<b>BEDROOM 2</b>	9' 0" X 9' 1"
<b>BEDROOM 3</b>	12' 9" X 11' 9"
<b>TERRACE A</b>	9' 1" X 9' 1"
<b>TERRACE B</b>	9' 1" X 6' 8"



All dimensions and specifications are approximate. Certain plans are reverse or mirror image. Balcony square footages are estimated and may vary from that stated. Please see Sales Representative for details. Furniture not included. Refer to key plan for unit location and orientation. E. & O.E.



**KING STREET WEST**

Published by Westbank Projects Corp, 2018

**CONCEPT**

Ian Gillespie  
Entro Communications

**TEXTS**

Ian Gillespie  
Bjarke Ingels/BIG  
Mark Ryan

**CONTRIBUTORS & COORDINATION**

BIG  
Public Work  
Ian Gillespie  
Jacqueline Che  
Jonah Letovsky  
Amanda McDougall  
Kaitlyn Wong  
Sean Gillespie  
Ariele Peterson

**BOOK DESIGN & PRODUCTION**

Entro Communications

**DESIGN TEAM****ARCHITECTURE**

Bjarke Ingels  
Thomas Christoffersen  
Lorenz Krisai  
Ryan Harvey  
Andrea Zalewski

**LANDSCAPE ARCHITECTURE**

Marc Ryan  
Virginia Fernandez Rincon

**INTERIOR ARCHITECTURE**

Francesca Portesine  
Janie Green

**CONTENT****SKETCHES & ILLUSTRATIONS**

BIG  
Public Work  
Metropolitan Fine Printers

**ARCHITECTURAL RENDERINGS**

Hayes Davidson  
BIG

**PHOTOGRAPHY**

Ben Rahn  
Justin Wu  
Derek Shapton  
George Pimentel  
Dennis Gocer  
Ema Peter  
Peter Aaron  
Lukas Dong  
B&B Italia  
Ed White  
Gwenael Lewis  
Andrew Latreille  
James KM Cheng  
Roberto Zava  
Mauricio J Calero

**PREPRESS & PRINTING**

Andora Graphics

**BINDERY**

Beck Bindery

©2018 Westbank Projects Corp. All rights reserved. No part of this publication may be reproduced, stored in a retrieval system, or transmitted in any form or by any means, electronic, mechanical, photocopying, recording, or otherwise, without prior consent of the publisher, except for short passages in reviews.

The purpose of this book is to outline the developer's intended vision for the proposed "KING Toronto" development project. As such, all descriptions, illustrations and/or other depictions contained in this book of the proposed development and/or development area surrounding the project site are conceptual only. This book should therefore not be relied upon as a representation or warranty, collateral agreement or condition, express or implied, of the final plans and specifications for the project, as the final plans and specifications are subject to the final review and approval of any applicable governmental authority and the developer and its consultants and engineers.

Dimensions, sizes, specifications, layouts and materials are approximate only and subject to change without notice. E. & O.E.

Printed in Canada.



L'VIND MURG

VOUIS LITTON

ALLIED



westbank<sup>25</sup>

BIG