

nørdic

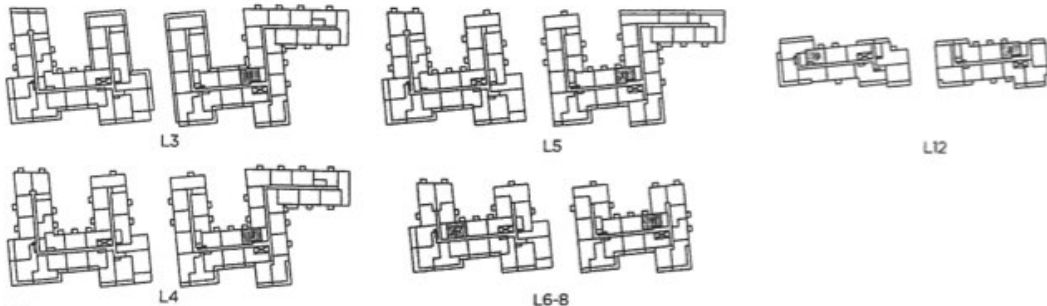
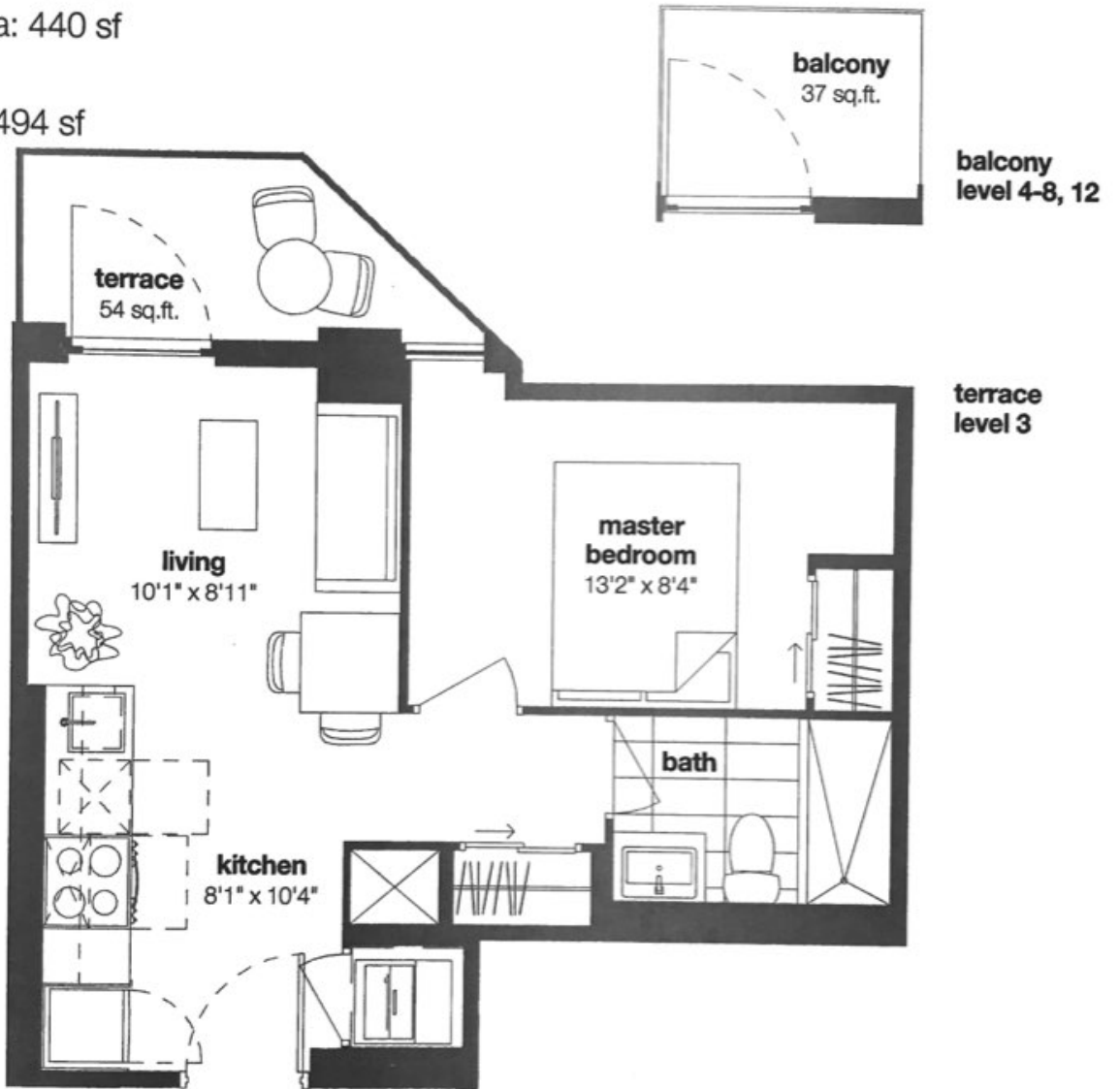
condos

1 bedroom - B3-A

interior living area: 440 sf

terrace: 54 sf

total living area: 494 sf



Materials, treatments, and floor plans are subject to change without notice. All readings are subject to exceptions. All floor plan dimensions are approximate. Actual available floor space may vary from the stated floor area. F & OE. All dimensions vary depending on floor level location.



nørdic

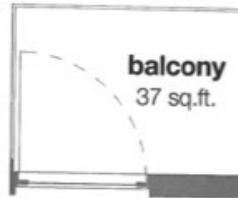
condos

1 bedroom - B7-A

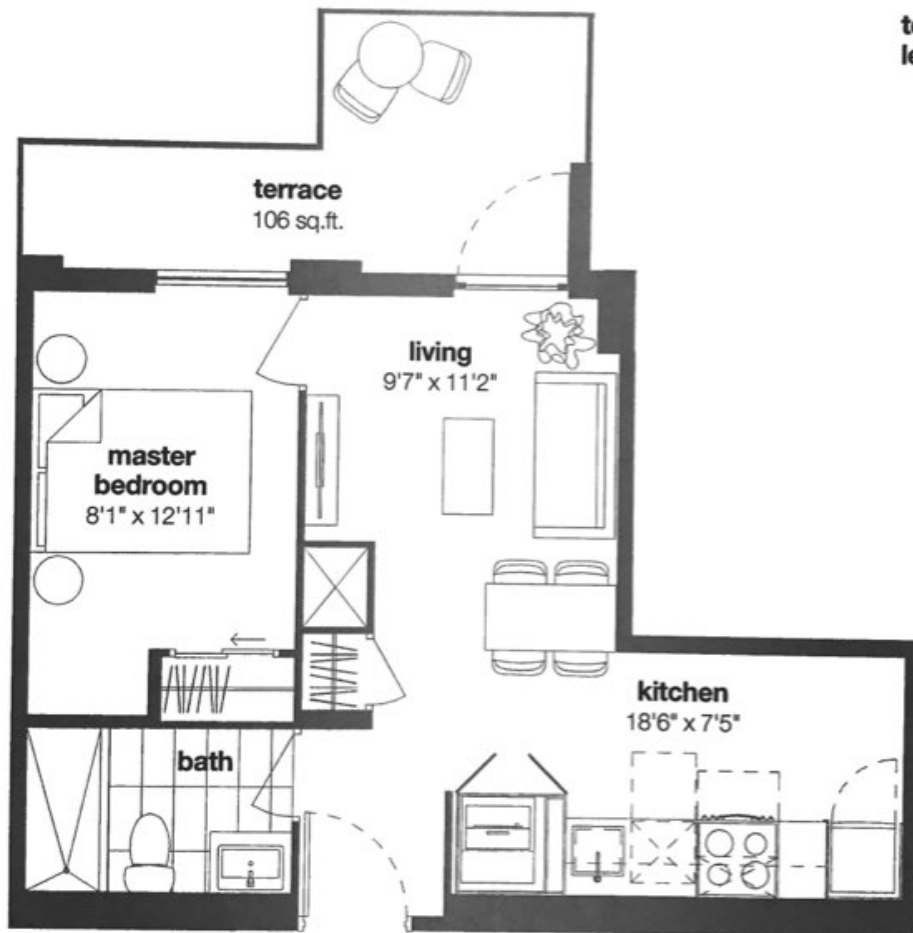
interior living area: 457 sf

balcony/terrace: 108 sf

total living area: 565 sf



balcony
level 10-11



terrace
level 9



L9



L10-11



Materials, specifications and floorplans are subject to change without notice. All drawings are artist's conceptions. All floorplans are approximate dimensions and do not include floor-to-floor thickness. All dimensions are approximate and may vary from the stated floor plan. C & OE. ENR is a digital copy depending on the floor level location.



nørdic

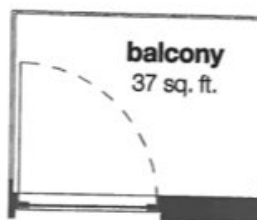
condos

1 bedroom + den - C5-A

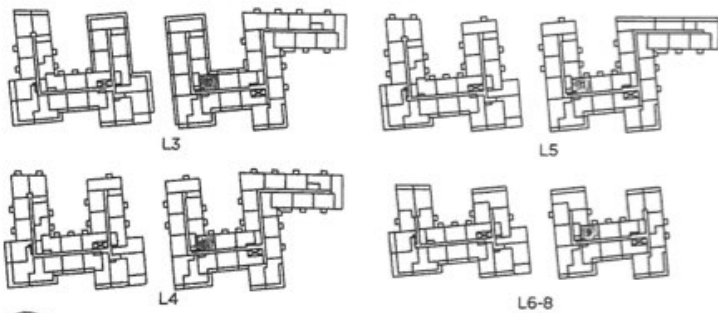
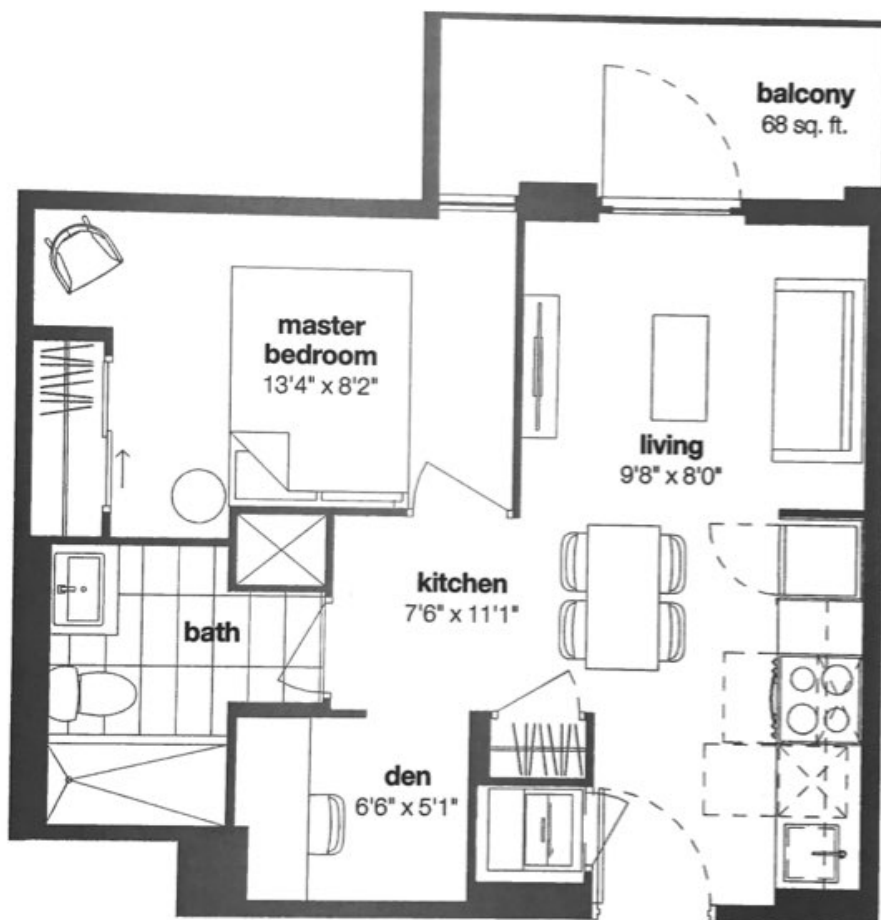
interior living area: 483 sf

balcony: 68 sf

total living area: 551 sf



balcony
level 4-8



Materials, specifications and floorplans are subject to change without notice. All renderings are artistic representations. All floorplans have approximate dimensions. Actual dimensions may vary from the stated floor area. E & OE. Entry depth may depend on floor level location.



nørdic

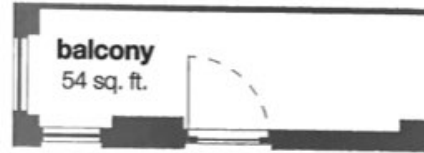
condos

1 bedroom + den - C6-A

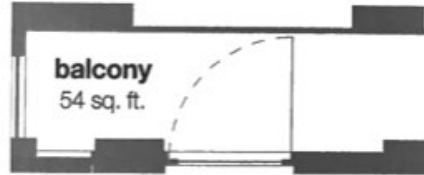
interior living area: 491 sf

balcony: 37 sf

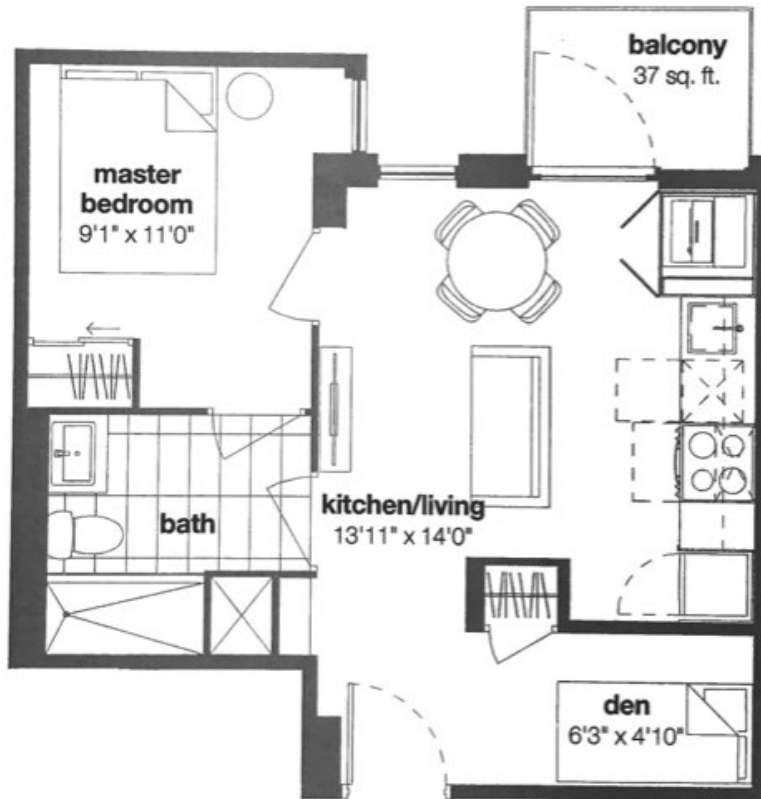
total living area: 528 sf



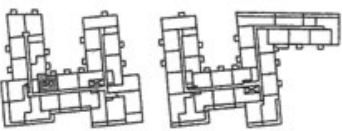
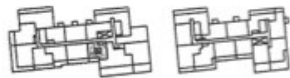
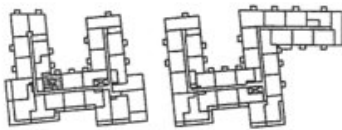
balcony
level 9



balcony
level 3-8



balcony
level 3-5, 10-11



Model, specifications and floorplans are subject to change without notice. All renderings are artistic representations. All dimensions are approximate. Dimensions of individual units may vary from the stated floor area. E & OE. Balcony depths vary depending on floor level location.



nørdic

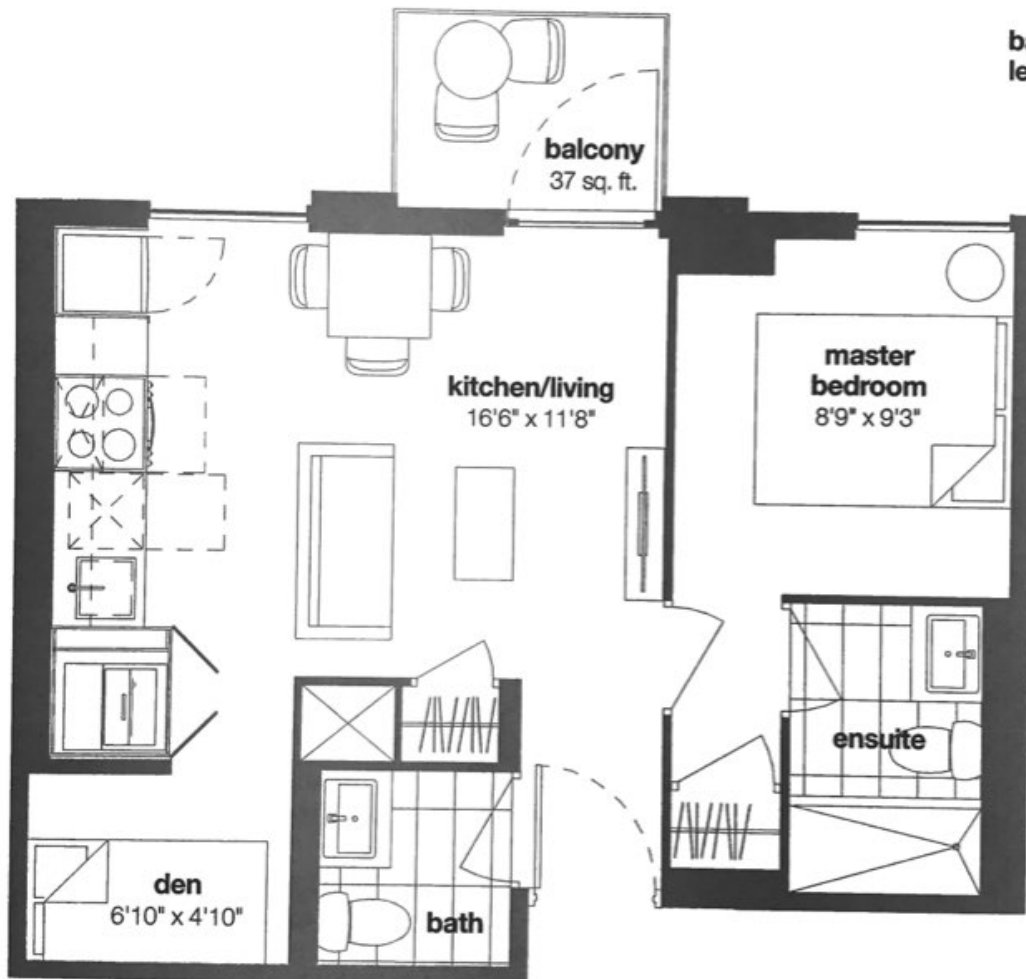
condos

1 bedroom + den - D1

interior living area: 502 sf

balcony: 37 sf

total living area: 539 sf



L6-8



Intended specifications and floor plans are subject to change without notice. All renderings are artistic conceptions. All the notes have approximate dimensions. Final actual floor plans may vary from the stated floor area. E. & O. E. All measurements vary depending on floor level location.



nørdic

condos

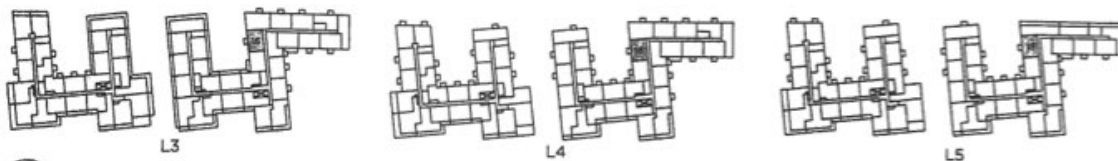
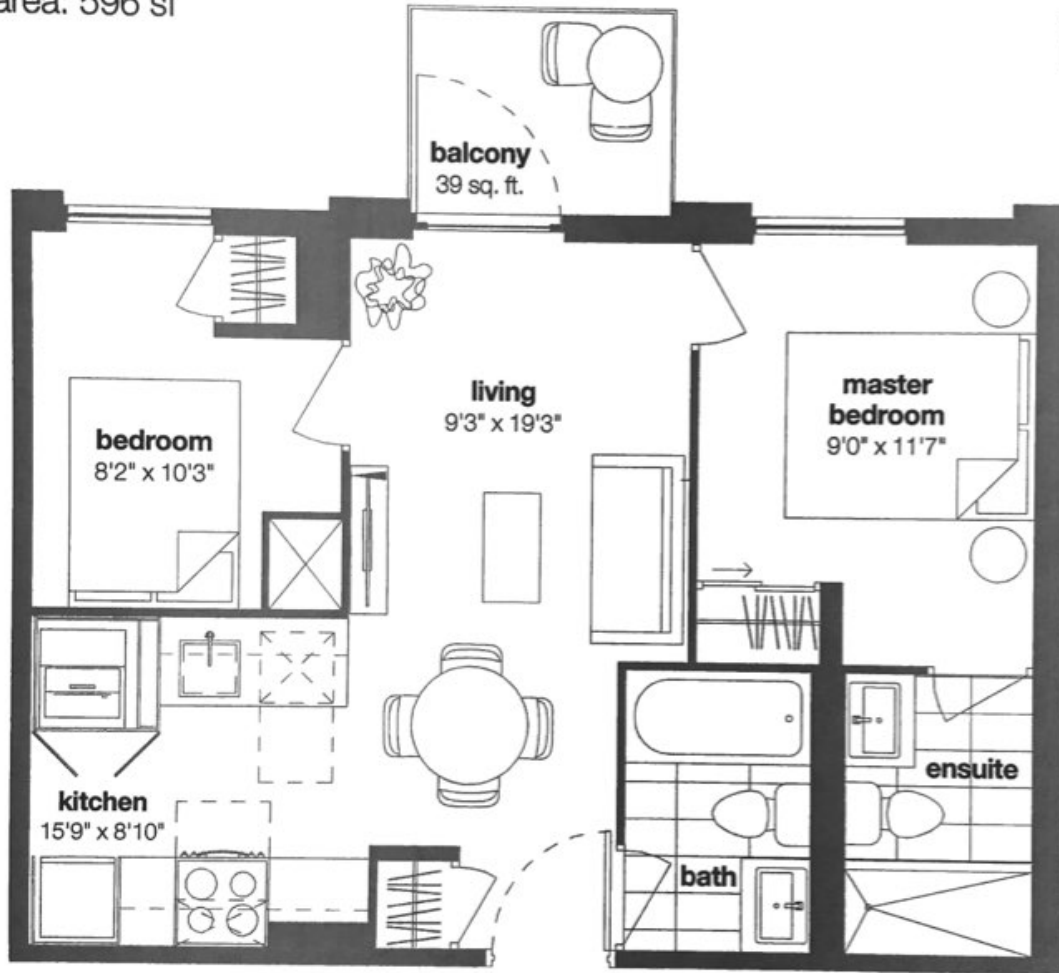
2 bedroom - E1-B

interior living area: 559 sf

balcony: 37 sf

total living area: 596 sf

balcony
level 3-5



Materials, specifications and floorplans are subject to change without notice. All renderings are artist's conceptions. All floorplans have approximate dimensions. Actual square floor space may vary from the stated floor area. E & OF, balcony depth may vary depending on floor level location.

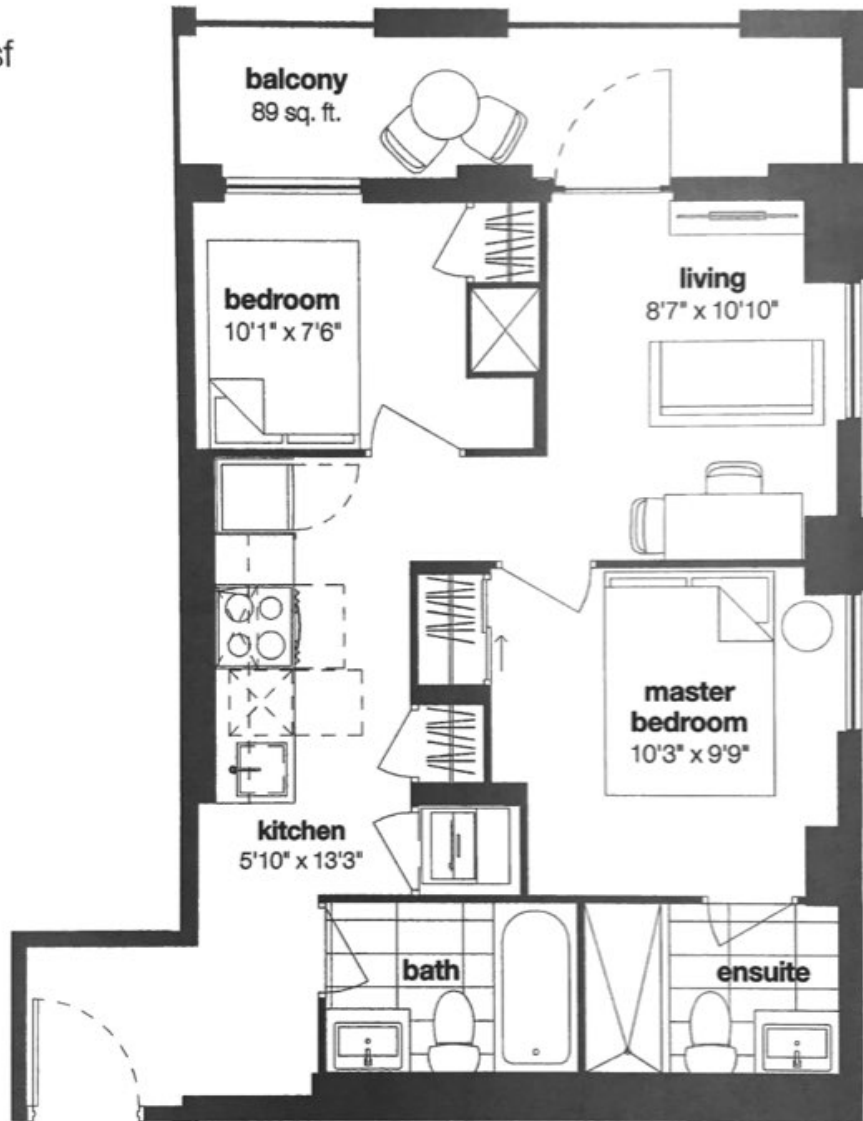


2 bedroom - E8-A

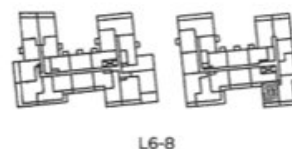
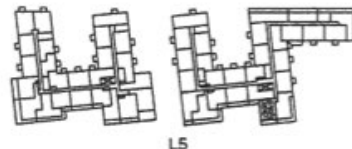
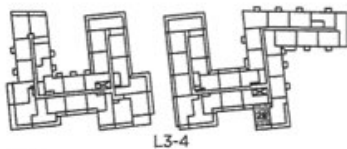
interior living area: 585 sf

balcony: 92 sf

total living area: 677 sf



balcony
level 3-8



Materials, specifications and floor-plans are subject to change without notice. All renderings are artist's conceptions. All floor-plans have approximate dimensions. Actual available floor space may vary from the stated floor area. E & OE. Balcony depths vary depending on floor level locations.

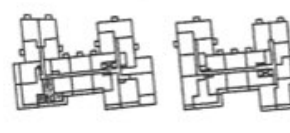
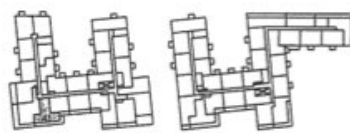
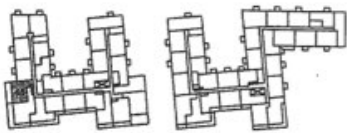
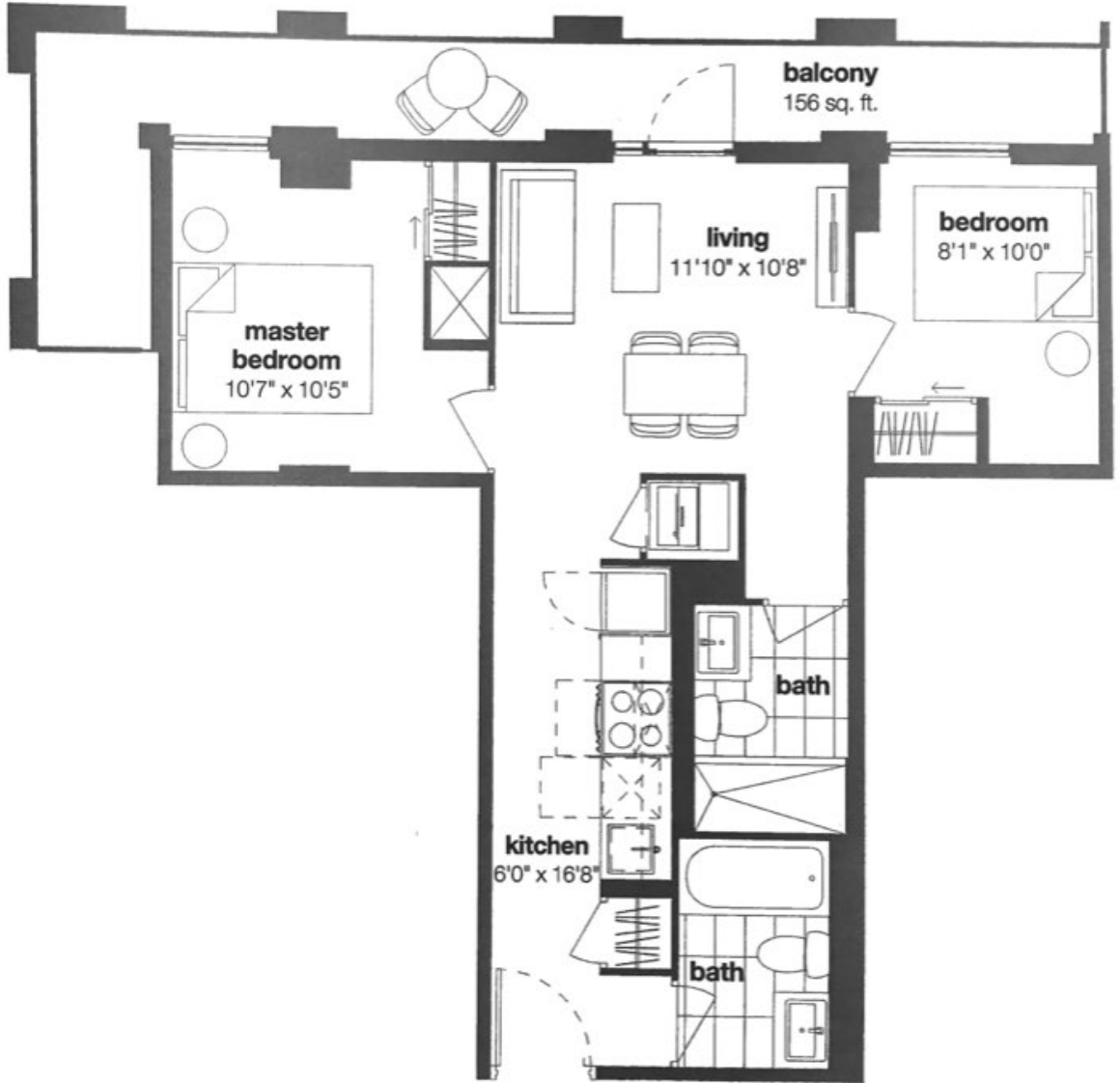
2 bedroom - E11-A

interior living area: 612 sf

balcony terrace: 166 sf

total living area: 778 sf

balcony
level 3-8



Master is architectural and floorplans are subject to change without notice. All renderings are artist's conceptions. All floorplan lines represent approximate dimensions. Total usable floor space may vary from the stated floor area. E.N.O.E. Estimating depth may vary depending on floor level location.

nørdic

condos

2 bedroom - E12-A

interior living area: 616 sf

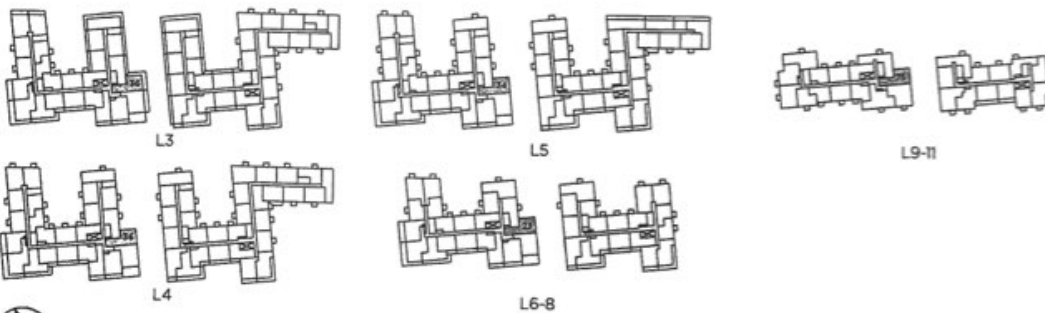
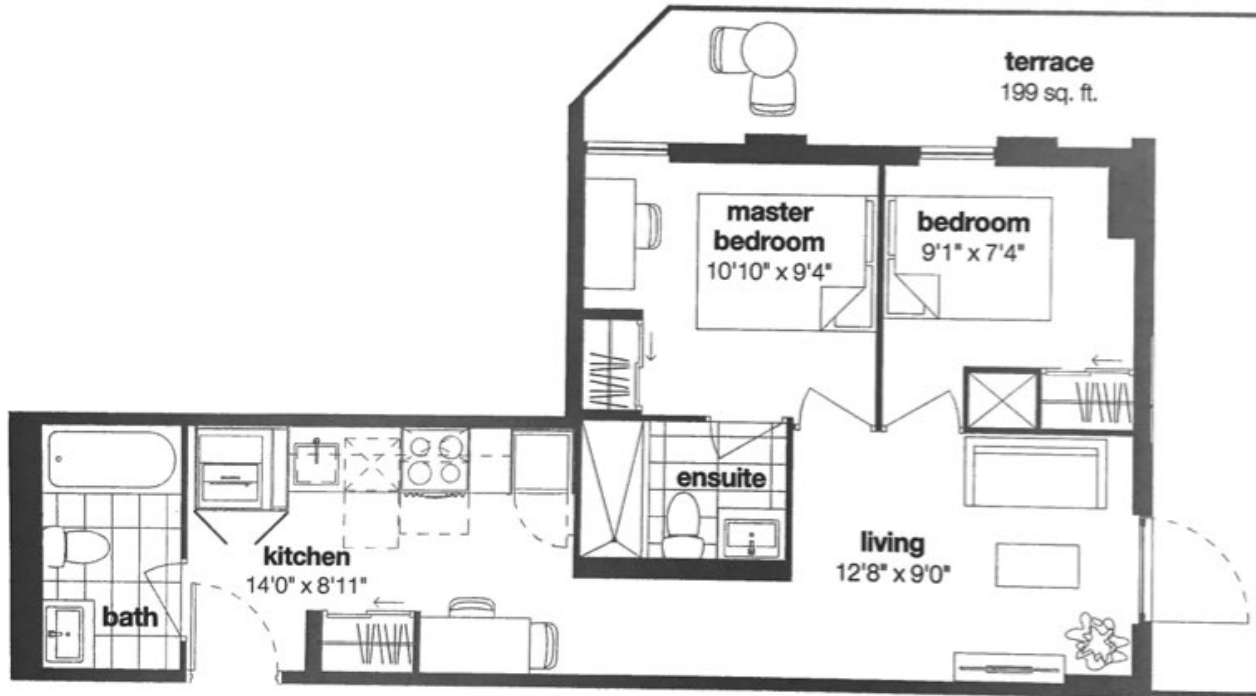
terrace: 199 sf

total living area: 815 sf



juliet balcony
level 4-11

terrace
level 3



Materials, specifications and floorplans are subject to change without notice. All renderings are artistic concepts only. All dimensions are approximate. Dimensions do not include structural elements. Vary from the stated floor area. E & OE. Entry depth vary depending on floor level location.



nørdic

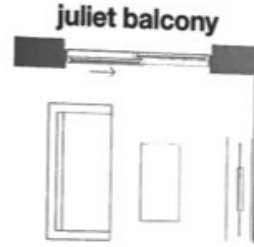
condos

2 bedroom + den - F3

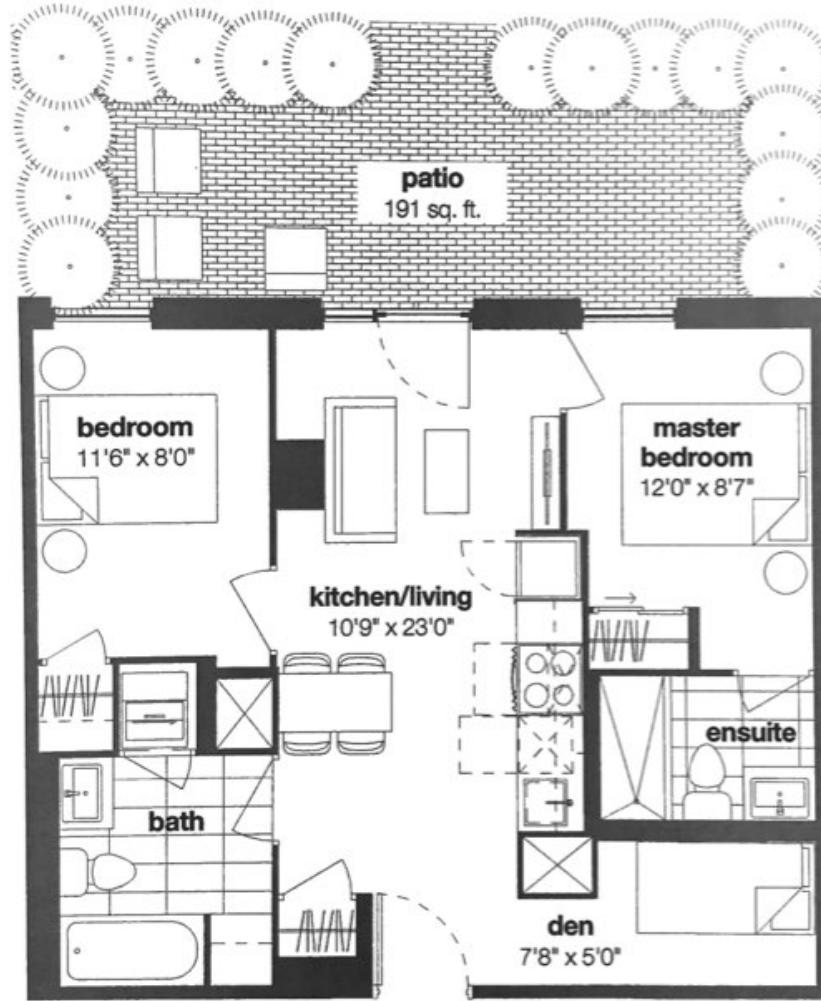
interior living area: 680 sf

patio: 191 sf

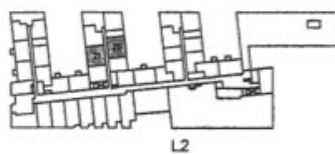
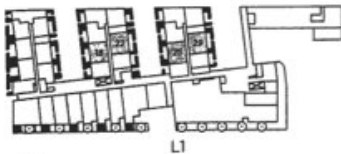
total living area: 871 sf



juliet balcony
level 2



patio
level 1



Materials, specifications and floorplans are subject to change without notice. All renderings are artist's conceptions. All floorplans have approximate dimensions. Actual available floor space may vary from the stated floor area. E. & O.E. Room heights may vary depending on floor level location.



nørdic

condos

2 bedroom + den - F6-B

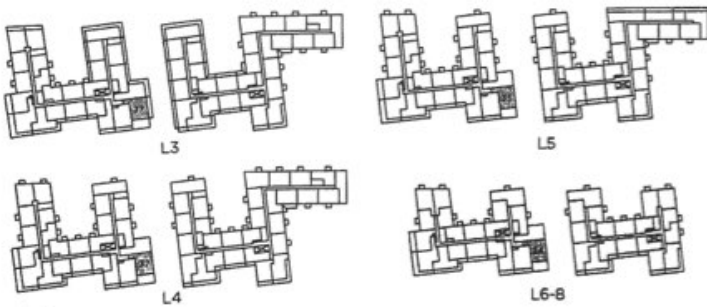
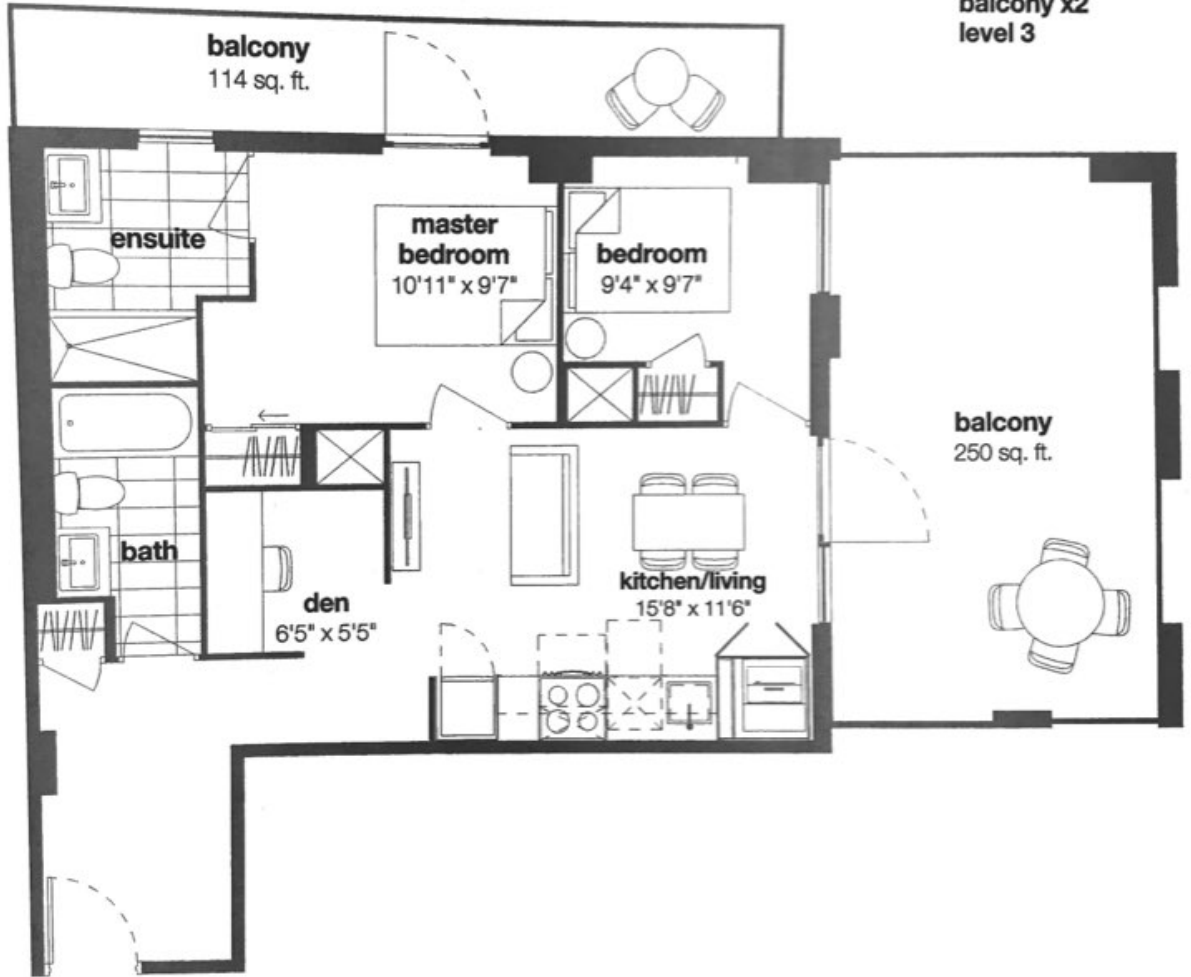
interior living area: 708 sf

balcony: 369 sf

total living area: 1,077 sf

balcony
level 4-8

balcony x2
level 3



Materials, specifications and floorplans are subject to change without notice. All renderings are artistic representations. All floorplans have approximate dimensions. Actual available floor space may vary from the stated floor area. E & OE. Only depths vary depending on floor level location.



3 bedroom - G2

interior living area: 725 sf

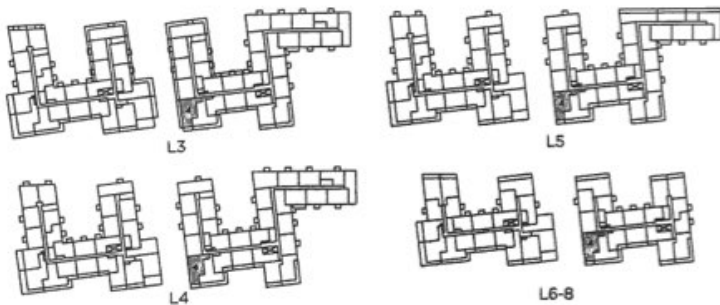
balcony+terrace: 120 sf

total living area: 845 sf



balcony
level 4-8

terrace + balcony
level 3



Historical specifications and floor plans are subject to change without notice. All renderings are artist's conceptions. All floorplans have approximate dimensions. Actual unit floor space may vary from the stated floor area. E & OE. Balcony depth may vary depending on floor level location.

nørdic

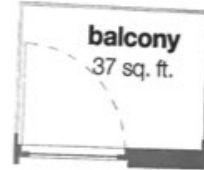
condos

3 bedroom - G8-A

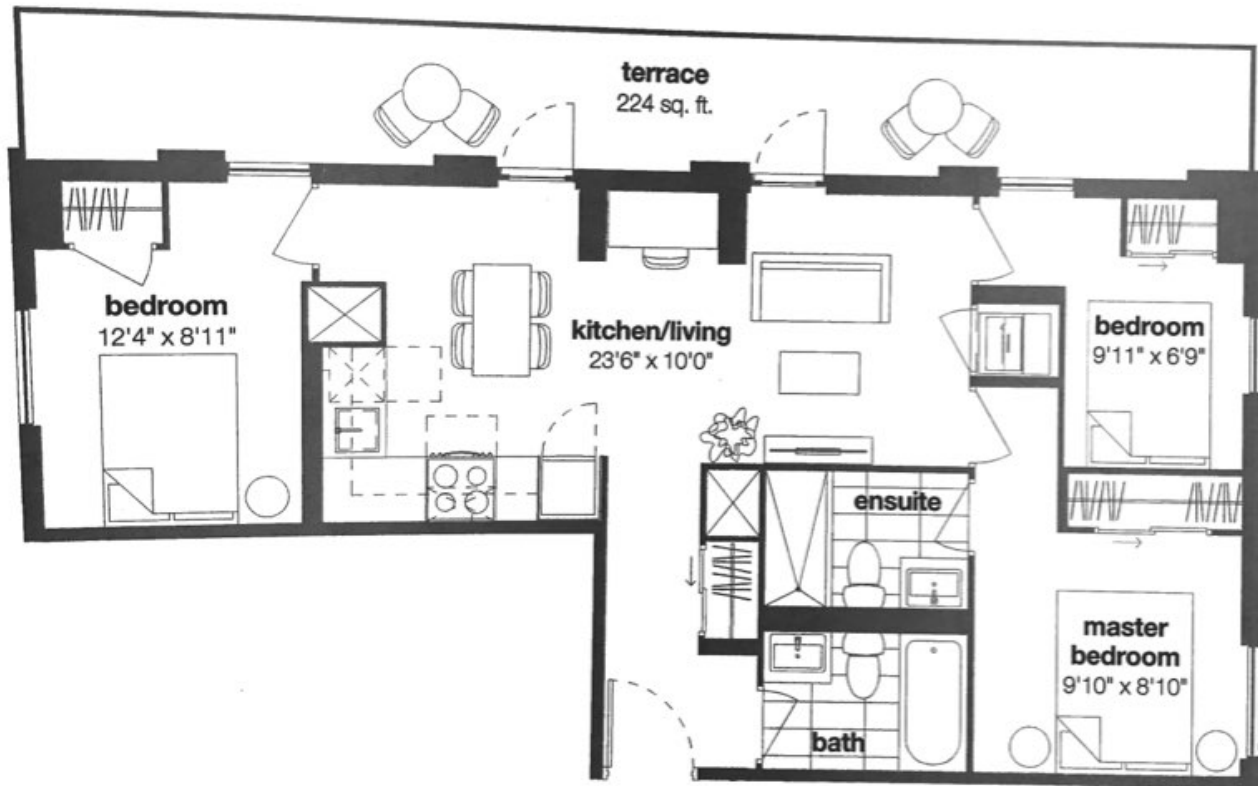
interior living area: 812 sf

terrace: 224 sf

total living area: 1,036 sf



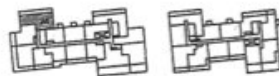
balcony
level 7-8
10-11



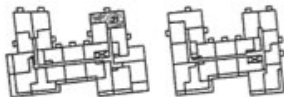
terrace
level 6,9



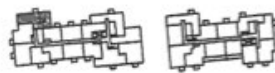
L6



L9



L7-8



L10-11



Materials, specifications and floorplans are subject to change without notice. All renderings are artistic representations. All dimensions shown approximate dimensions, including, but not limited to, floor space, may vary from the listed floor area. E & OE. Elevation depths vary depending on floor level location.

