



CANA ALTA

*Modern Lifestyle*

Cana Alta is an exclusive community of modern residences located in large individual plots, with all amenities to satisfy more demanding and adjusted tastes to the modernity of the new time.

*“The enjoyment and security that your family deserves and surrounded by a exuberant nature”*



*A better quality of life  
for your family, closer  
to the nature*

Cana Alta has wide green areas and a lush park that has wide walks and a circuit pedestrian who will allow a solace recreation and make sport a part whole of your life.



# Club House

Exclusive for use  
of the owners



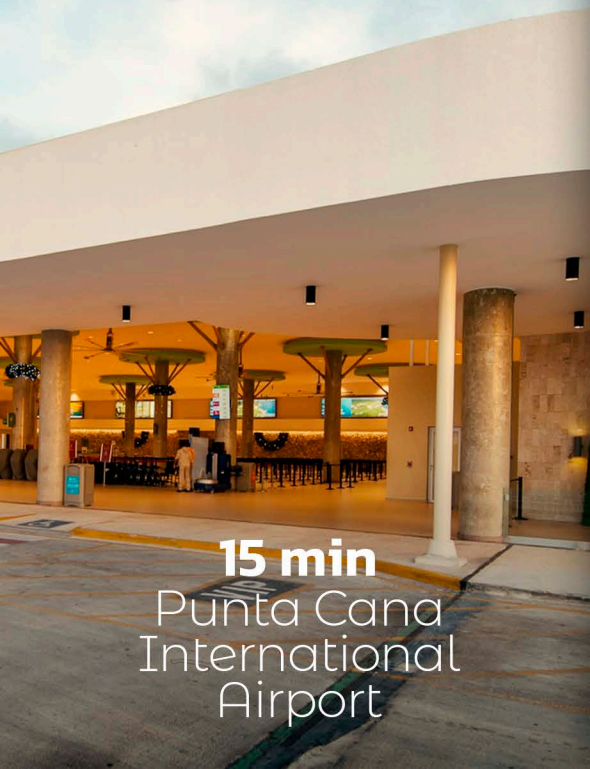
# Location



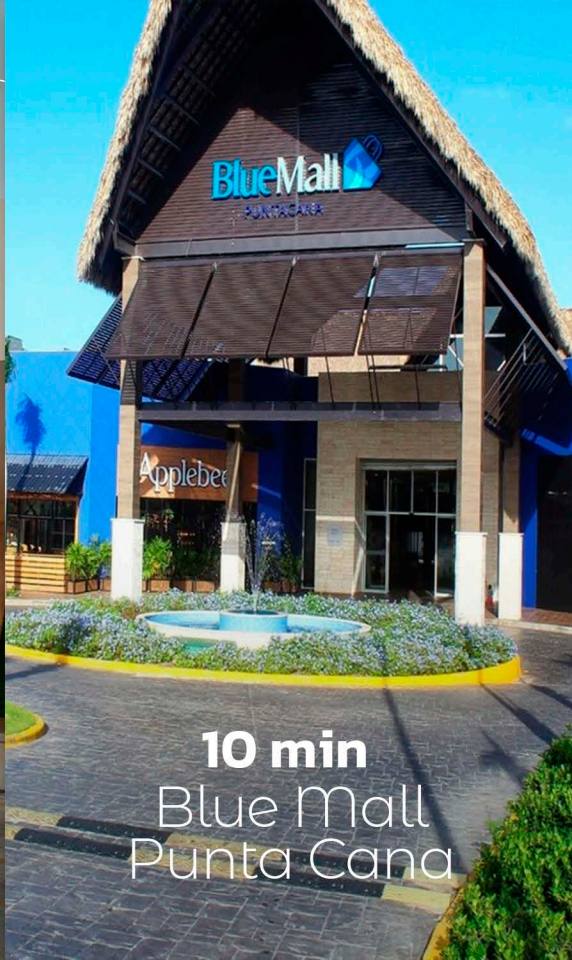
Ciudad Las Canas,  
Cap Cana



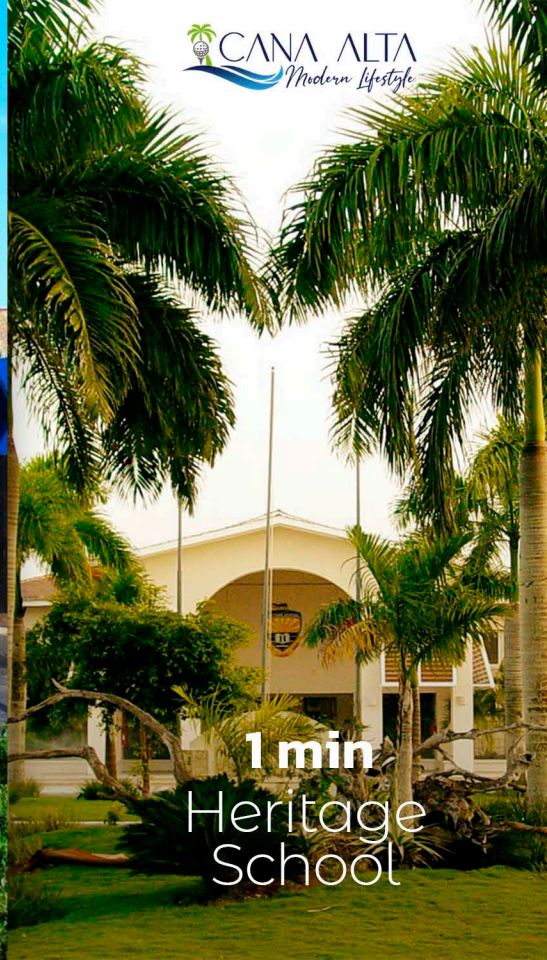
# Nearby Spots



**15 min**  
Punta Cana  
International  
Airport



**10 min**  
Blue Mall  
Punta Cana



**1 min**  
Heritage  
School

# Nearby Spots



**12 min**

Juanillo Beach



**10 min**

Api Beach

*@PedroBrazale*

 **CANA ALTA**  
Modern Lifestyle



**10 min**

Cap Cana Marine

# Social Areas



Gym  
Area

Paddle Boarding  
Court



Adults pool  
with sundeck

Children's pool

Bathrooms



Multipurpose room  
for events

Games area  
for children





# *Modernity in every detail*

Cana Alta offers 5 different residence designs that buyers can choose according to your needs and preferences

Conceptual representations may be subject to change.

# Urban Infrastructure

Underground gas installations with meters

Drinking water installations with individual meters

Underground electrical installations

Outdoor lighting with high efficiency light poles

Management Office

Ribbed concrete sidewalks

Concrete curbs

Paved and signposted streets

# Interior Finishes

- Imported porcelain tile floors
- Closets and doors waterproof melamine
- Stainless steel hardware
- Aluminum windows and natural glass
- Modular kitchens
- Granite countertops and backsplash
- gas heaters
- Terraces in coralline
- Imported bathroom fixtures
- Imported taps
- Air pre-installation



# Villa type A

235m<sup>2</sup> / 2,529.52ft<sup>2</sup>





Conceptual representations may be subject to change.



# First Level

235m<sup>2</sup> / 2,529.52ft<sup>2</sup>

Receiver

Dining room

Half guest bathroom

Open kitchen with breakfast area

Service room with bathroom

Washing area

Covered parking for 2 cars



# Second level

235m<sup>2</sup> / 2,529.52ft<sup>2</sup>

3 Bedrooms

3 Full bathrooms

Walking in closet and  
Balcony in principal room

## Additional

Swimming pool

Pre-installation of Air conditioning

Jacuzzi for 10 people

Gazebo with BBQ area

Second level terrace extension





# Villa type B

290m<sup>2</sup> / 3,121.53ft<sup>2</sup>





Conceptual representations may be subject to change.



# First Floor

290m<sup>2</sup> / 3,121.53ft<sup>2</sup>

Dining room

Half guest bathroom

Covered terrace

Open kitchen with breakfast area

Service room with bathroom

Washing area

Covered parking for 2 cars



# Second level

290m<sup>2</sup> / 3,121.53ft<sup>2</sup>

3 Bedrooms

3 Full bathrooms inside of the rooms

Family Room

Private balcony in the principal room

## Additional

Swimming pool

Jacuzzi for 10 people

Gazebo with BBQ area

Hot kitchen

Open terrace

Pre-installation of Air conditioning

Close the terraces with glass doors



# Villa type C

305m<sup>2</sup> / 3,289.99ft<sup>2</sup>





26

Conceptual representations may be subject to change.





# First Floor

305m<sup>2</sup> / 3,289.99ft<sup>2</sup>

Receiver

Dining room

Half guest bathroom

Covered terrace

Open kitchen with breakfast area

Service room with bathroom

Washing area

Covered parking for 2 cars



# Second level

305m<sup>2</sup> / 3,289.99ft<sup>2</sup>

4 Bedrooms

4 Full bathrooms (within the rooms)

Family Room

Private balcony in the room. principal

## Additional

Swimming pool

Jacuzzi for 10 people

Gazebo with BBQ area

Hot kitchen

Terrace extension

Close the terraces with glass doors



# Villa type D

290m<sup>2</sup> / 3,121.53ft<sup>2</sup>





Conceptual representations may be subject to change.



# First Level

290m<sup>2</sup> / 3,121.53ft<sup>2</sup>



- Room with bathroom and walk-in closet
- Receiver
- Dining room
- Half guest bathroom
- Open kitchen with breakfast area
- Service room with bathroom
- Washing area
- Covered parking for 2 cars



# Second Level

290m<sup>2</sup> / 3,121.53ft<sup>2</sup>

- 3 Rooms with Walk-in Closets
- 3 full bathrooms (within the rooms)
- Family Room
- White clothes closet
- Private balcony in the main room

## Additional

- Swimming pool
- Pre-installation of Air conditioning
- Jacuzzi for 10 people
- Gazebo with BBQ area
- Hot kitchen



# Villa type Ε

180m<sup>2</sup> / 1937.5ft<sup>2</sup>





# First Level

180m<sup>2</sup> / 1937.5ft<sup>2</sup>

2 rooms with bathroom  
and walk-in closet

Receiver

Living room / Dining room (4.5m height)

Half guest bathroom

Terrace

Open kitchen with breakfast area

Washing area

Covered parking for 2 cars



## Additional

Swimming pool

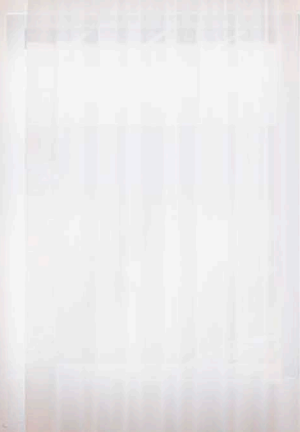
Jacuzzi for 10 people

Pre-installation of Air conditioning

Gazebo

Service room with bathroom

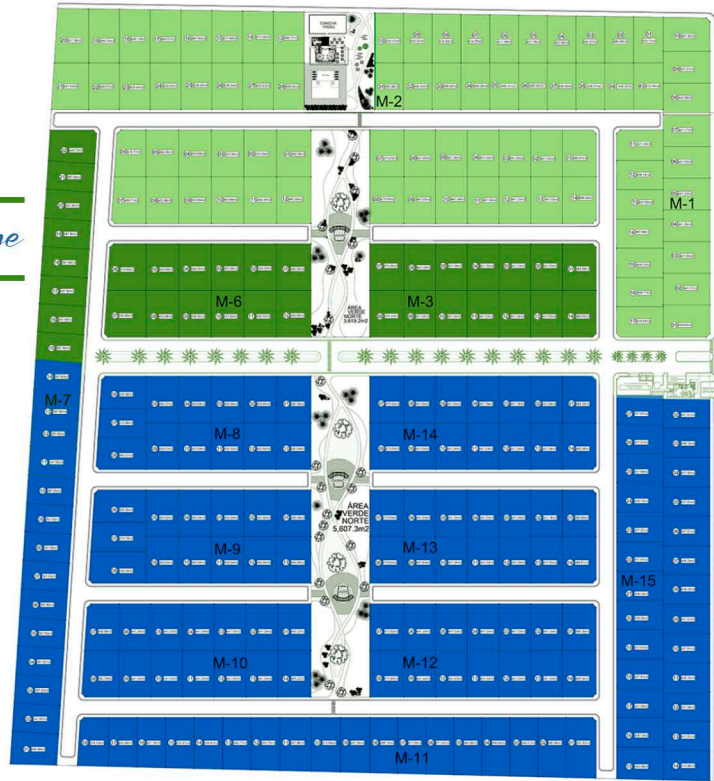






Conceptual representations may be subject to change.

2nd Stage



Future Stages

