





The images and design, as well as the setting of the furniture, are of an illustrative nature and of artistic appreciation, do not compromise the promoter and are subject to change.



: Las imágenes y diseño así como la ambientación del mobiliario son de carácter ilustrativo y de apreciación artística, no comprometen al promotor y están sujetas a cambios.

The images and design, as well as the setting of the furniture, are of an illustrative nature and of artistic appreciation, do not compromise the promoter and are subject to change.

REEF & GOLF Residences

Símbolo de lujo y sofisticación

This exclusive real estate development stands out for its elegant architecture, and also for its functionality, creating a place where comfort meets luxury. Corner has been designed with a unique approach, harmoniously integrating with the environment, respecting space with the existing vegetation.

The lush green gardens and trees invite you to enjoy a calm and clocky atmosphere, ideal for those looking for a lifestyle that celebrates the natural world.

Come and live the experience of Reef & Golf Residences, where elbow dio is a treat for the senses.



Las imágenes y diseño así como la ambientación del mobiliario son de carácter ilustrativo y de apreciación artística, no comprometen al promotor y están sujetas a cambios.

The images and design, as well as the setting of the furniture, are of an illustrative nature and of artistic appreciation, do not compromise the promoter and are subject to change.

Welcome to REEF & GOLF Residences Luxury residential apartments in Cap Cana

We present an exceptional development designed by the prestigious BMA architectural studio, recognized worldwide for its emblematic works, such as the Aston Martin Residences in Miami. This project consisted of 95 luxury opportunities, located on the Los Iguanas golf complex, offering spectacular views of the sea. The combination of comfort and luxury is manifested in a timeless design.

Located in Cap Cana, a private and exclusive community within Punto Cano, this enclave is just 11 kilometers from the Punta Cana International Airport. Cap Cana is home to the most marina in the Caribbean, destination for private vessels, consolidating itself as an elite destination.

Residents and visitors will enjoy a wide range of premium beach amenities and activities, including non-motorized water sports, sailing, kayaking, scuba diving, hiking, and eco-friendly activities. Why eco youngturos offers experiences such as zipline and buggy excursions.

In addition, Cap Cana is home to the prestigious Punto Espada Golf Club, recognized as one of the best golf clubs in the Caribbean. This project offers an exceptional opportunity to enjoy a luxury lifestyle in an exclusive environment.



: Las imágenes y diseño así como la ambientación del mobiliario son de carácter ilustrativo y de apreciación artística, no comprometen al promotor y están sujetas a cambios.
The images and design, as well as the setting of the furniture, are of an illustrative nature and of artistic appreciation, do not compromise the promoter and are subject to change.

BMA Architecture Study

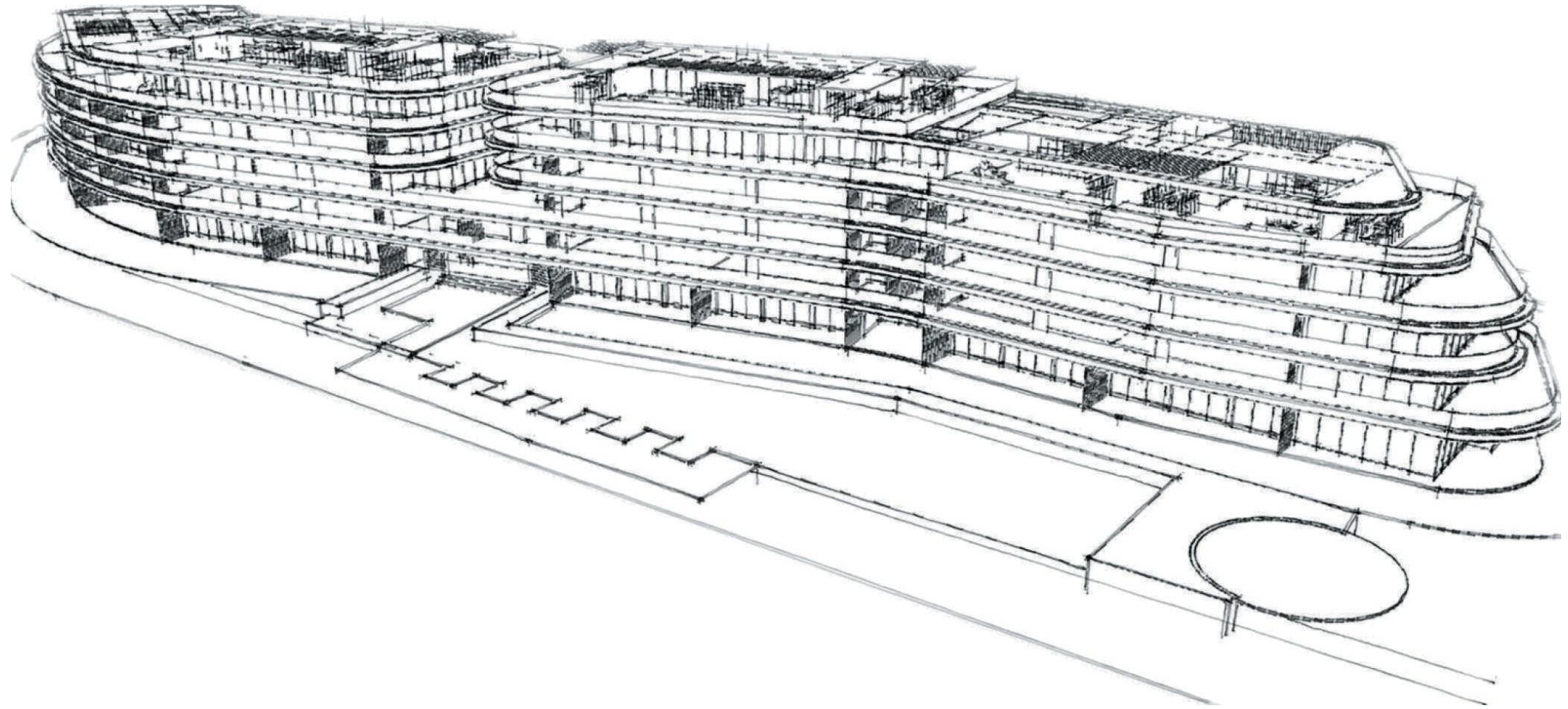
BMA is a global architectural and urban planning firm based in Buenos Aires, Santiago, Chile and Miami.

Its architectural method focuses on the design of building and urbanization projects with all types of programs and scales in different geographies.

Space projects thinking about the strengthening of urban environments, the optimization of programs, the transformation of the habit towards sustainable models and the incorporation of new technologies.

With more than 30 years of international experience, they today have more than 400 projects in different cities in Argentina, Chile, Uruguay, Paraguay, Bolivia, Peru, Panama, Colombia, Ecuador, the United States of America, Armenia, Saudi Arabia and Bulgaria.

Their ability to solve large works projects leads them to stand out and develop in the design of urbanizations, mixed uses, transportation infrastructure, residential, hotel, sports and cultural architecture.



Cap Cana is the region
with the most real estate growth in
Latin America




REEF & GOLF
RESIDENCES

Why invest in Cap Cana Dominican Republic

Unrivaled Location and Exceptional Strategy:

Discover a real estate development in one of the fastest growing regions in Latin America. With a tropical climate that can be enjoyed all year long, this destination offers an ideal environment for the lifestyle you have always dreamed of. In addition, you will have the security of a stable government and a solid economic, legal and political environment. Foreign investors will also be able to benefit from attractive tax advantages and exemptions, making this opportunity a smart and safe investment. Don't miss the opportunity to be part of this exciting project!

Benefits of being an owner at REEF & GOLF Residences

- You can purchase a membership to Punta Espada Golf Club and Eden Rock Beach Club in Coleton.
- Preferential service at Marina Cap Cana and you have the right to acquire a mooring.
- Riding Center.
- Bilingual School with International Certification.
- Access or Ecological Parks.
- Golf course.
- Marine.
- Hotels.
- 24 Hour Security.
- Access or Beach Club.
- Emergency Center with qualified team of doctors.



: Las imágenes y diseño así como la ambientación del mobiliario son de carácter ilustrativo y de apreciación artística, no comprometen al promotor y están sujetas a cambios.

The dream destination for athletes

Discover the Excellence of Golf in Cap Cana: Enjoy two impressive golf courses, designed by legend Jack Nicklaus. World-renowned Punta Espada hosted the prestigious Cap Cana Championship, part of the PGA Tour, in 2008, 2009 and 2010.

Additionally, development of Iguanas Golf is underway, promising to attract golf lovers and potential investors to the exclusive surroundings of Cap Cana. Live the experience of playing on world-class courses while immersing yourself in a lifestyle of unparalleled luxury.

- Sport fishing
- Golf
- Tennis
- Mountain bike
- Swimming
- Basketball
- Volleyball
- Soccer
- Pole
- Riding
- Sailing
- Kite surfing
- Cycling

Cap Cana has stood out for the quality of its activities and the diversity of sports that can be practiced. Come and discover how every day can be a new adventure!



: Las imágenes y diseño así como la ambientación del mobiliario son de carácter ilustrativo y de apreciación artística, no comprometen al promotor y están sujetas a cambios.

Playas exclusivas

With 8 km of coastline and 5 km of white sand beaches, Cap Cana

It allows you to enjoy multiple aquatic activities. In the most famous place in the country, Playa Juanillo.

REEF & GOLF is just 500 meters from Juanillo beach.



: Las imágenes y diseño así como la ambientación del mobiliario son de carácter ilustrativo y de apreciación artística, no comprometen al promotor y están sujetas a cambios.

Marina Cap Cana

International yacht and deep-sea fishing destination.

Recognized by Billfish Report as the no. 1 in the world, the Cap Cana marina has more than 150 docks, with capacity for yachts up to 150 feet.

Its privileged location near the Mona Channel places it in an enviable position in relation to the rest of the Caribbean.



: Las imágenes y diseño así como la ambientación del mobiliario son de carácter ilustrativo y de apreciación artística, no comprometen al promotor y están sujetas a cambios.



The Stables

A unique equestrian center in the Caribbean. In 2015, Los Establos was inaugurated, an equestrian community that combines nature and luxury, offering in one place the most varied equestrian disciplines such as Jumping, Paso Fino, Racing, Dressage, Reining, Enduro, Cross Country.

Host of the XXII World Cup 2015 and the Polo Challenge, the first 22-goal event held in the Republic Dominicana is emerging as the largest and most complete Equestrian Center in the Caribbean and Latin America.



Scape Park Avenlura Eco Park

With 172 km of nature reserve Scape Paork promotes and reinforces the preservation of endemic and endangered species. Enjoy all the sports and entertainment activities you can imagine at Scape Park.



El Dorado Water Park

Hidden among lush vegetation in the heart of Punta Cana, El Dorado Water Park is the perfect place to enjoy a full day of adventures. This water park offers activities guaranteed to be fun for everyone, from thrilling gravity-defying slides to relaxing pools. A unique experience in the Dominican Caribbean!

In the family area of El Dorado Water Park, adults and children will be able to enjoy the most fun experiences and the fastest races. The little ones have the children's area, with a replica of extreme slides, their own lazy river and a Tree of Life.



Amphitheater

To complete the experience in this water park, it has restaurants, bars and snack stands, which offer a wide variety of national and international gastronomic options.

You can also enjoy the best concerts in its impressive Te Legend Arena amphitheater inaugurated by world star Elton Jhon.

First Level International Education

The CAP Heritage School Bilingual Educational Center offers comprehensive training that combines academic excellence and a high-quality bilingual teaching approach.

With a highly trained teaching team and innovative resources, it promotes the development of critical and creative skills in its students. It is an excellent option for those seeking a cutting-edge education in a safe and stimulating environment.



Paddle

The paddle courts at Cap Cana are designed to international standards, impeccable playing surfaces and first-class amenities. Whether you are an enthusiastic beginner or an experienced player, you will find the perfect setting to challenge your skills and enjoy the game.



Concacaf football house

The Concacaf Confederation of National Soccer Associations of North America, Central America and the Caribbean Islands, will inaugurate its UNA FOOTBALL HOUSES in Cap Cana with modern state-of-the-art soccer facilities.



Amenities

- Private security
- Swimming pools
- Playground
- Reception & Lobby
- BBQ area
- Canine area
- Green Area
- Working Area
- Sports Bar
- Golf Simulator
- Rooftop
- Gym
- Coworking
- Underground parking
- Sauna
- Lockers



: Las imágenes y diseño así como la ambientación del mobiliario son de carácter ilustrativo y de apreciación artística, no comprometen al promotor y están sujetas a cambios.

The images and design, as well as the setting of the furniture, are of an illustrative nature and of artistic appreciation, do not compromise the promoter and are subject to change.

Return on your investment Homebelike

As the exclusive owner of REEF & GOLF Residences, you will enjoy the advantage of having a reliable company that has a team of trained and experienced specialists in Latin America and the Caribbean, who will be in charge of managing your rental property.

Homebelike offers a wide range of services for owners who want to increase their income safely and easily, managing the entire online reservation process, automating rental payments, offering flexible prices, cancellation options and ensuring apartment availability.



Las imágenes y diseño así como la ambientación del mobiliario son de carácter ilustrativo y de apreciación artística, no comprometen al promotor y están sujetas a cambios.
The images and design, as well as the setting of the furniture, are of an illustrative nature and of artistic appreciation, do not compromise the promoter and are subject to change.

REEF & GOLF Residences

REEF & GOLF Residences is a luxury residential development located in a privileged environment, surrounded by nature and with impressive views of the Las Iguanas Golf course and 600 meters away the sea. The objective of the project is to create an exclusive and comfortable living space, which combines harmony with the natural environment and elegance in design.

It consists of 5 levels plus terraces, with a total of 95 luxury residential apartments. The apartments have 1, 2, 3 bedrooms, plus a family room and a service room, offering a variety of typologies to satisfy the needs of residents.

Each apartment is unique, with a personalized design and has a spacious terrace that offers impressive views of the pools, garden and golf course.

Residents can choose between different typologies, including private gardens and apartments with panoramic views.

The materials and finishes used are of high quality, guaranteeing a standard of luxury and comfort.



: Las imágenes y diseño así como la ambientación del mobiliario son de carácter ilustrativo y de apreciación artística, no comprometen al promotor y están sujetas a cambios.

The images and design, as well as the setting of the furniture, are of an illustrative nature and of artistic appreciation, do not compromise the promoter and are subject to change.

Apartments with 1, 2 and 3 bedrooms with very spacious surfaces, for a comfortable and functional residence.

- Living room Dining room
- Integrated Kitchen
- Family Room with Bathroom
- Rooms with Private Bathroom and Dressing Room
- Views or Gardens, Pools and Golf
- Exclusive gardens
- Spacious Rooftop
- Service Room
- All apartments have appliances
- Garages



Los imógenes y diseño así como la ambientación del mobiliario son de carácter ilustrativo y de apreciación artística, no comprometen al promotor y están sujetas a cambios.

The images and design, as well as the setting of the furniture, are of an illustrative nature and of artistic appreciation, do not compromise the promoter and are subject to change.



The images and design, as well as the setting of the furniture, are of an illustrative nature and of artistic appreciation, do not compromise the promoter and are subject to change.



The images and design, as well as the setting of the furniture, are of an illustrative nature and of artistic appreciation, do not compromise the promoter and are subject to change.



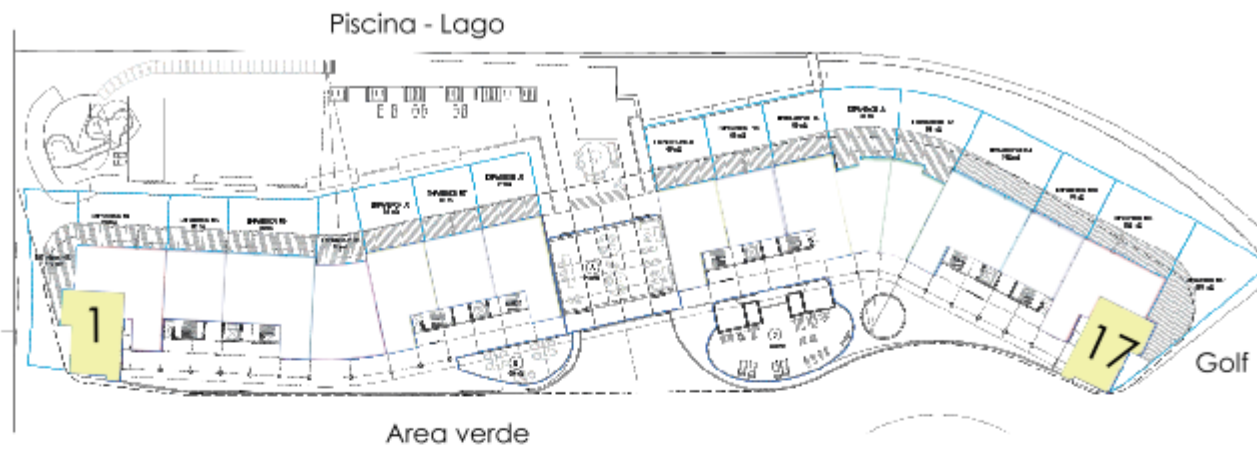
The images and design, as well as the setting of the furniture, are of an illustrative nature and of artistic appreciation, do not compromise the promoter and are subject to change.

Unit Typologies



The images and design, as well as the setting of the furniture, are of an illustrative nature and of artistic appreciation, do not compromise the promoter and are subject to change.

Las imágenes son ilustrativas. Los metrajes pueden tener variaciones, según unidad funcional.

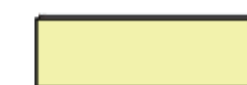


Nivel I

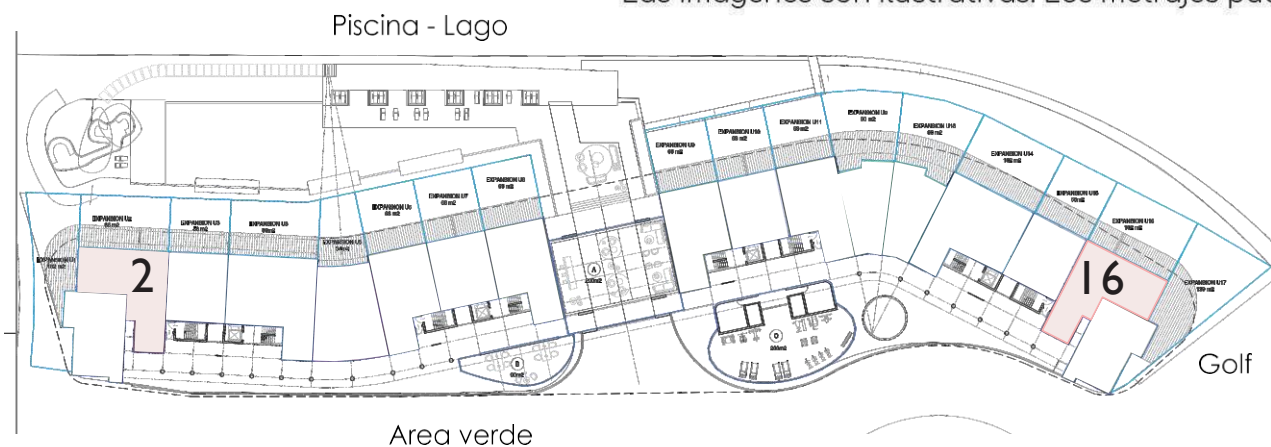


37

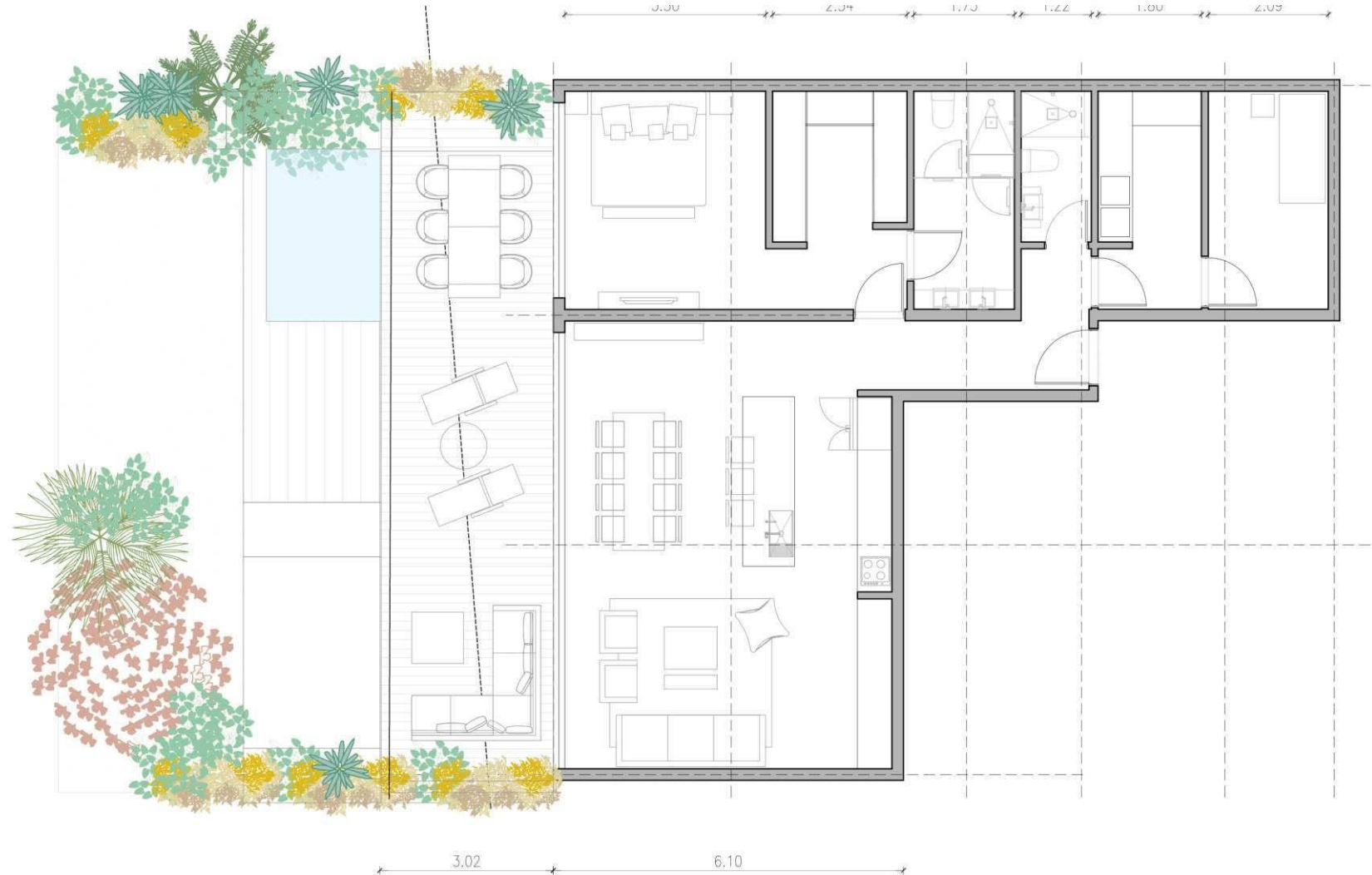
NIVEL 1 - TIPOLOGIA A

	2H
Superficie cubierta:	1: 84 m ²
Superficie terraza:	: 38 m ²

Las imágenes son ilustrativas. Los metrajés pueden tener variaciones, según unidad funcional.



Nivel I



NIVEL 1 - TIPOLOGIA B



1H + HS

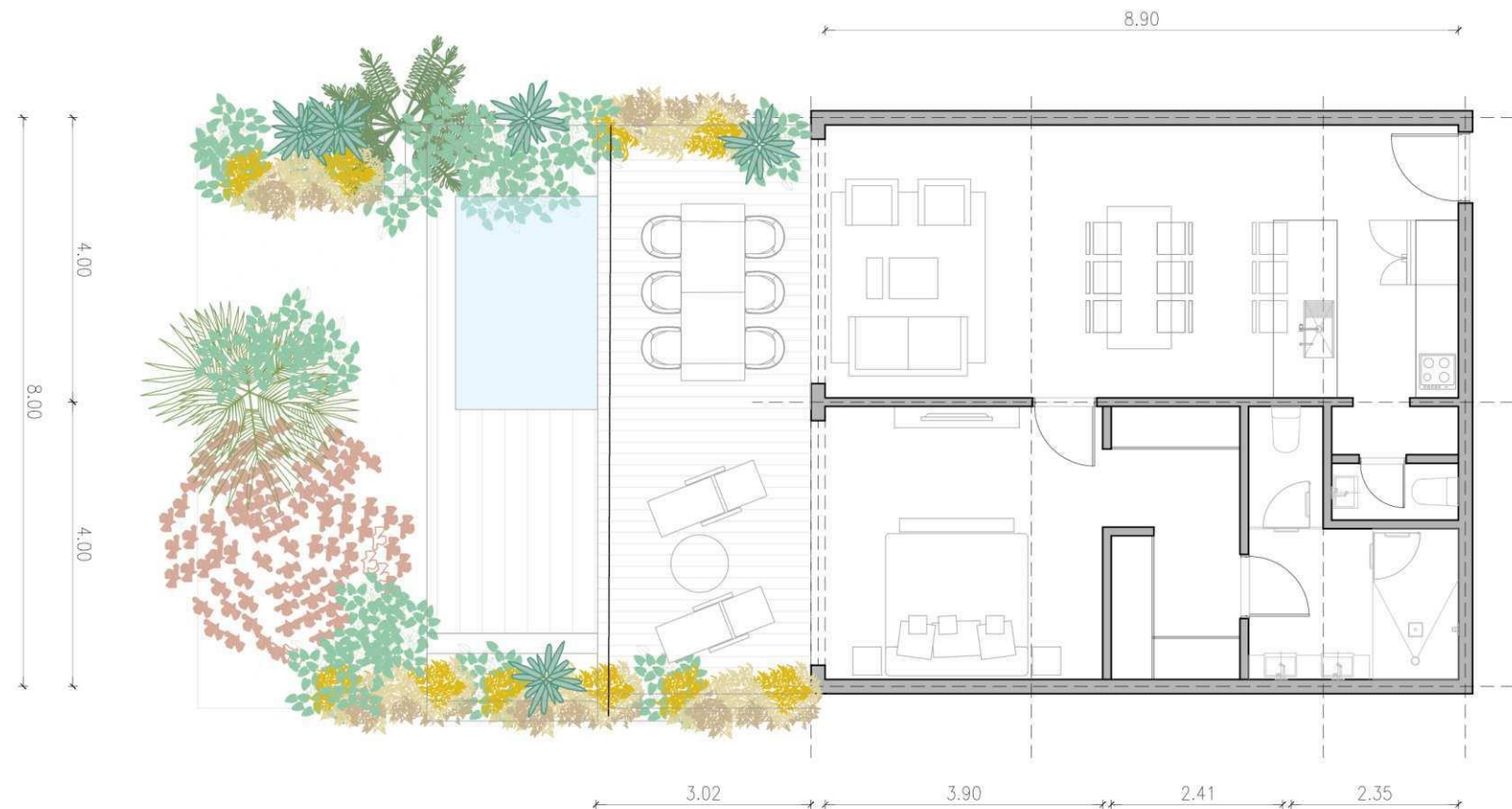
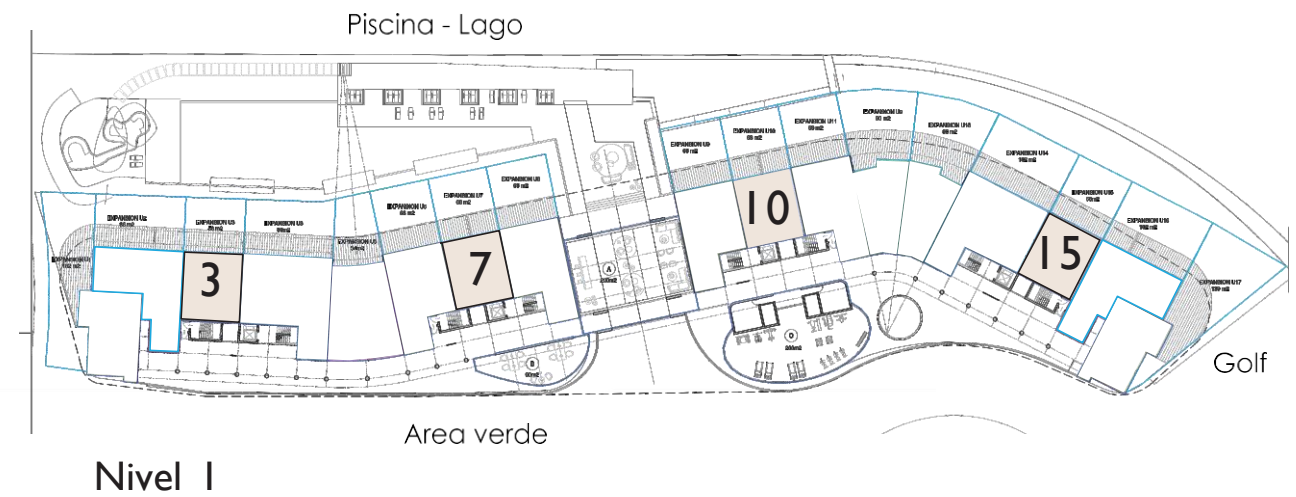
Superficie cubierta: 107 m²

Superficie terraza: 35 m²



The images are illustrative. The footage may vary depending on the functional unit.

Las imágenes son ilustrativas. Los metrajes pueden tener variaciones, según unidad funcional.



NIVEL 1 - TIPOLOGIA C

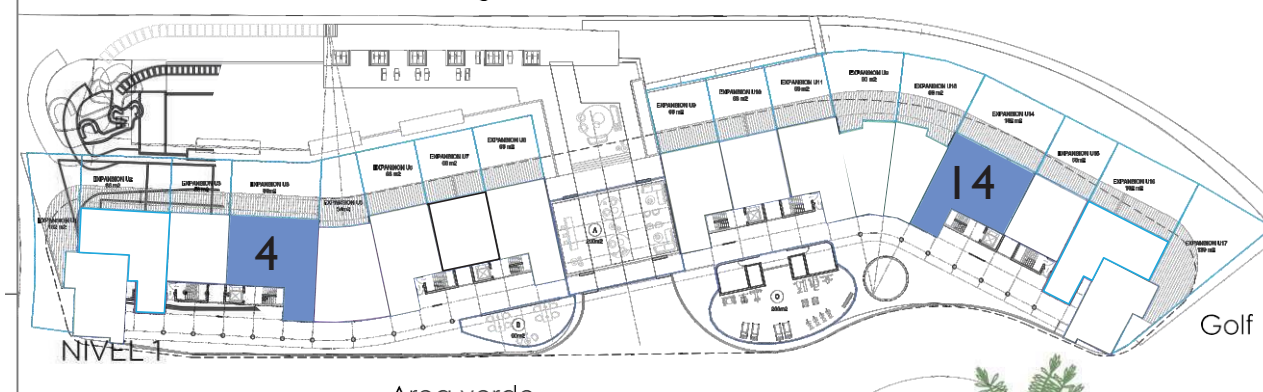


Superficie cubierta: 74 m²
Superficie terraza: 24 m²

The images are illustrative. The footage may vary depending on the functional unit.

Las imágenes son ilustrativas. Los metrajés pueden tener variaciones, según unidad funcional.

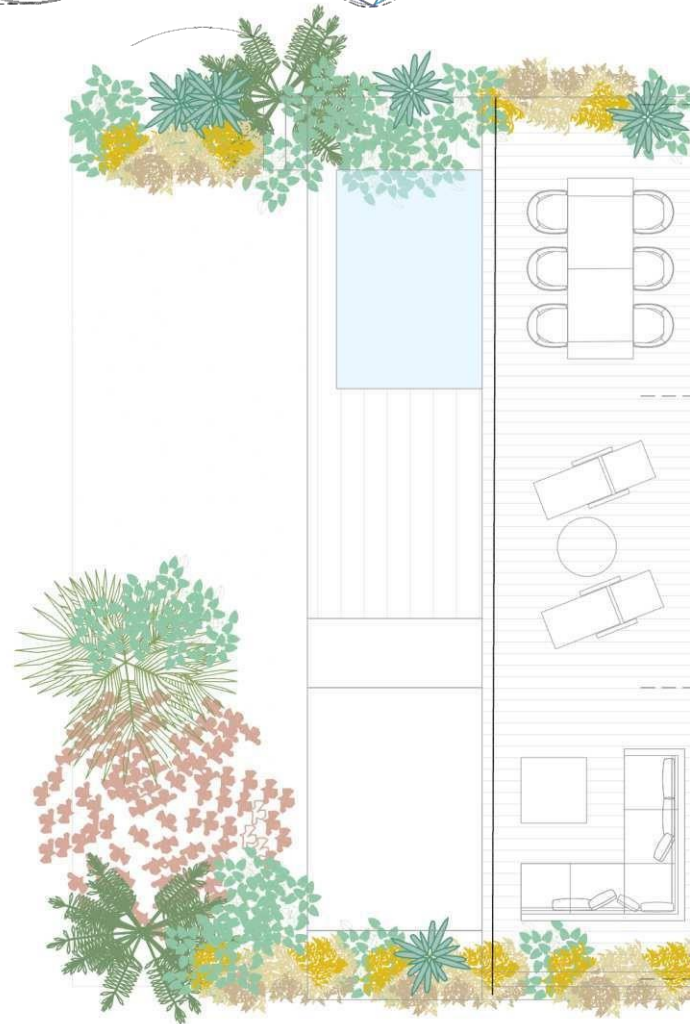
Piscina - Lago



Nivel I

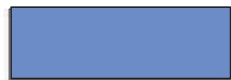
Area verde

4.64
12.00
3.36
4.00



40

NIVEL 1 - TIPOLOGIA D



2H + HS

Superficie cubierta: 130 m²

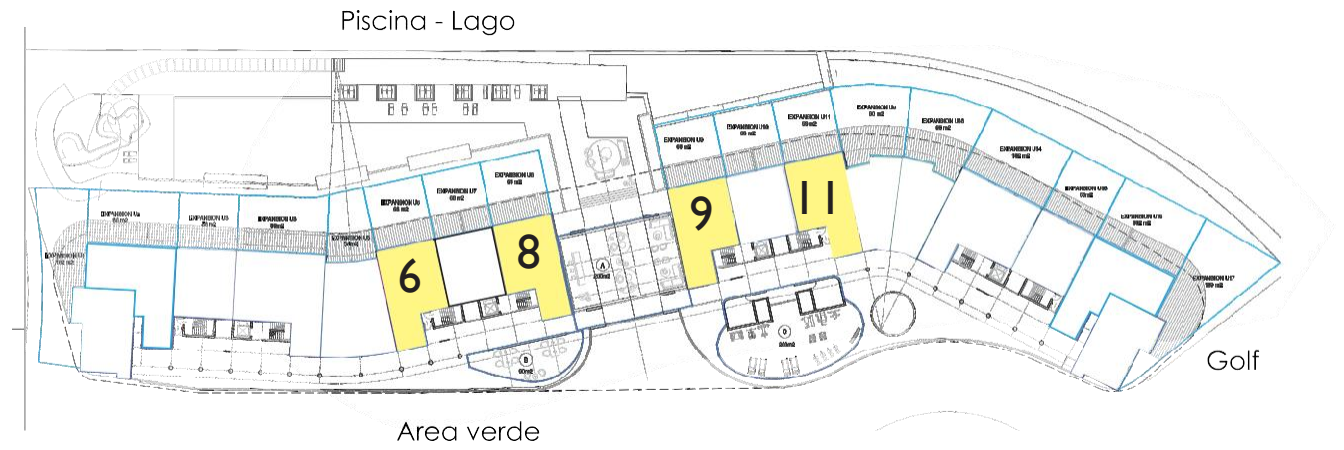
Superficie terraza: 35 m²



NIVEL 1 - TIPOLOGIA E

1H + FAM

Superficie cubierta: 111 m²
Superficie terraza: 25 m²



NIVEL 1 - TIPOLOGIA F



1H + HS

Superficie cubierta: 93 m2
Superficie terraza: 24 m2

The images are illustrative. The footage may vary depending on the functional unit.



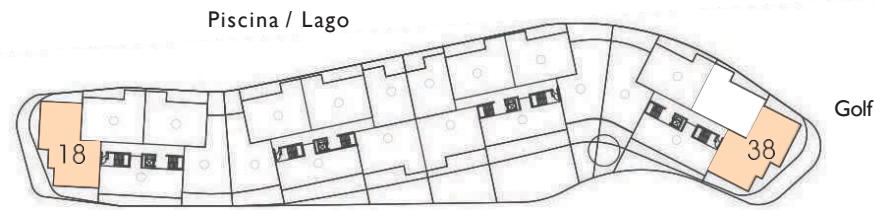
NIVEL 1 - TIPOLOGIA G



1H

Superficie cubierta: 70 m²
Superficie terraza: 35 m²

The images are illustrative. The footage may vary depending on the functional unit.



NIVEL 2

Area Verde



NIVEL 2 - TIPOLOGIA 1

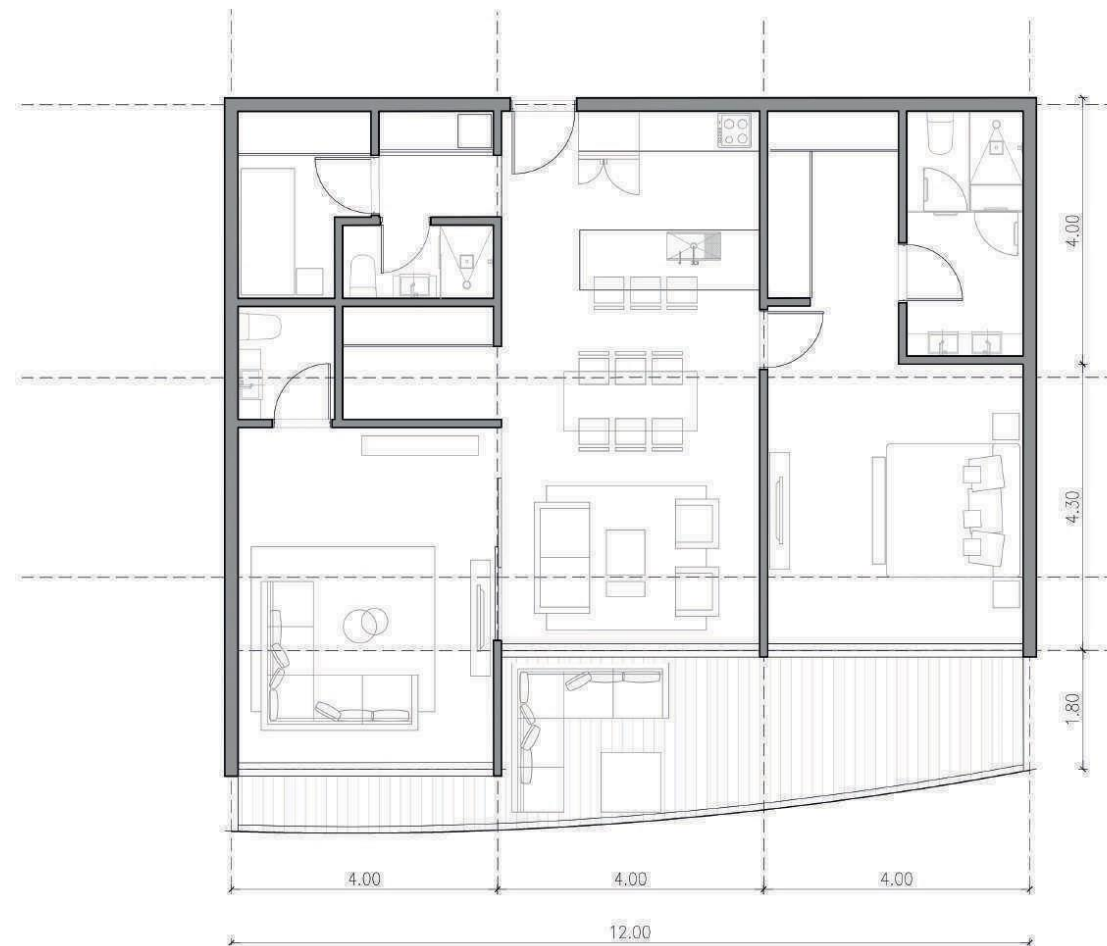


3H + HS

Superficie cubierta: 148 m²

Superficie terraza: 130 m²

Las imágenes son ilustrativas. Los metrajes pueden tener variaciones, según unidad funcional.



NIVEL 2 | 3 | 4 - TIPOLOGIA 2



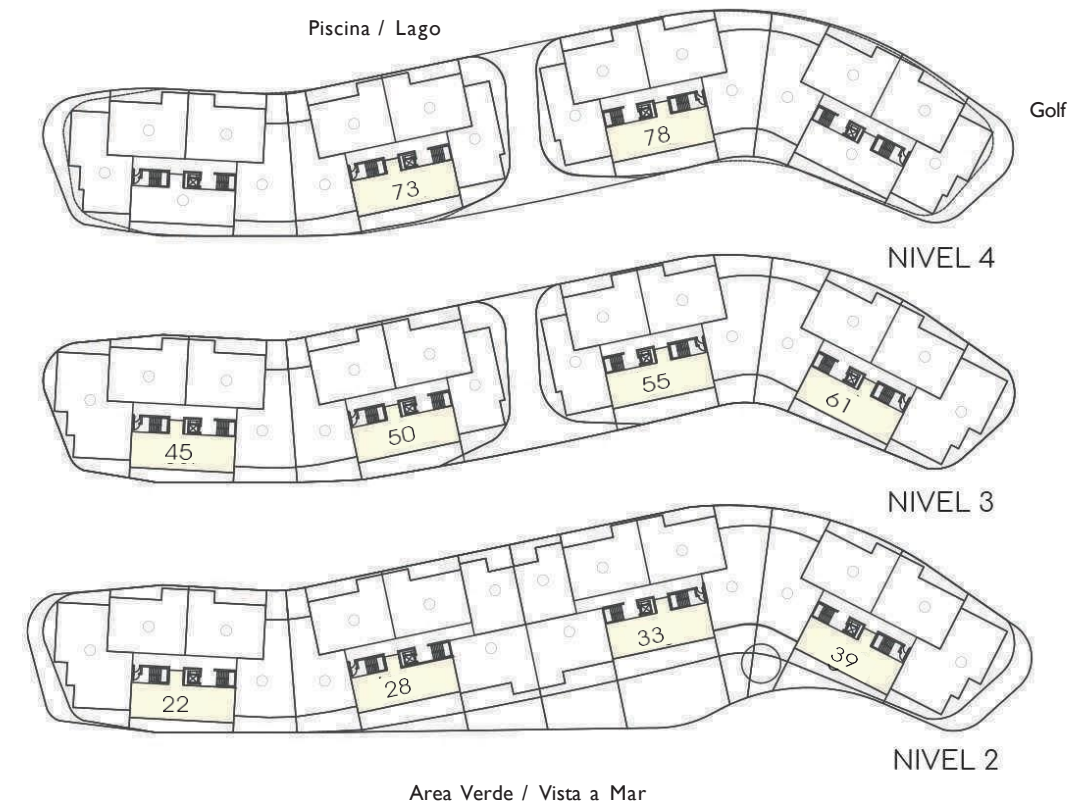
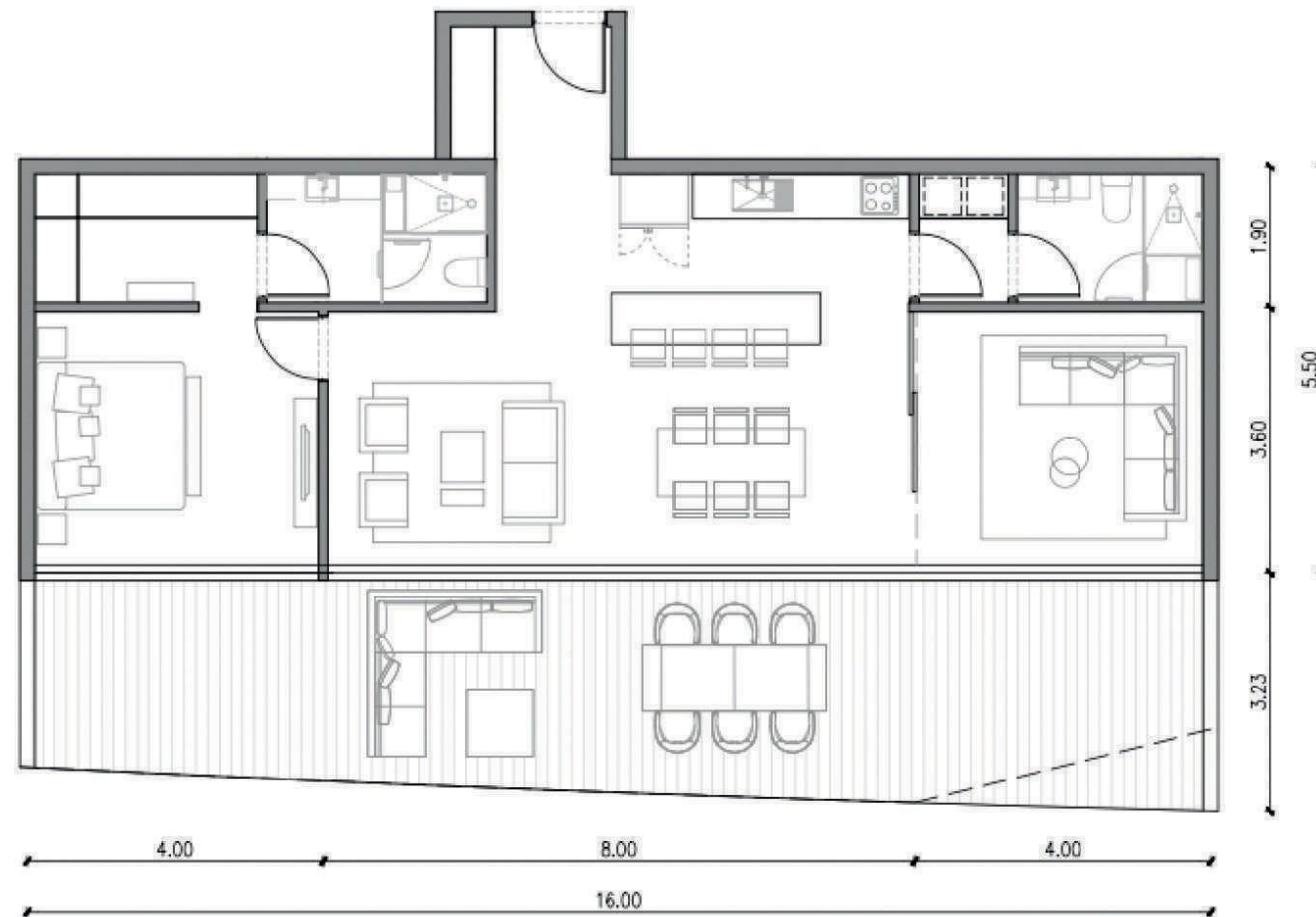
1 H + FAM + HS

Superficie cubierta: 108 m²

Superficie terraza: 30 m²

The images are illustrative. The footage may vary depending on the functional unit.

Las imágenes son ilustrativas. Los metrajes pueden tener variaciones, según unidad funcional.



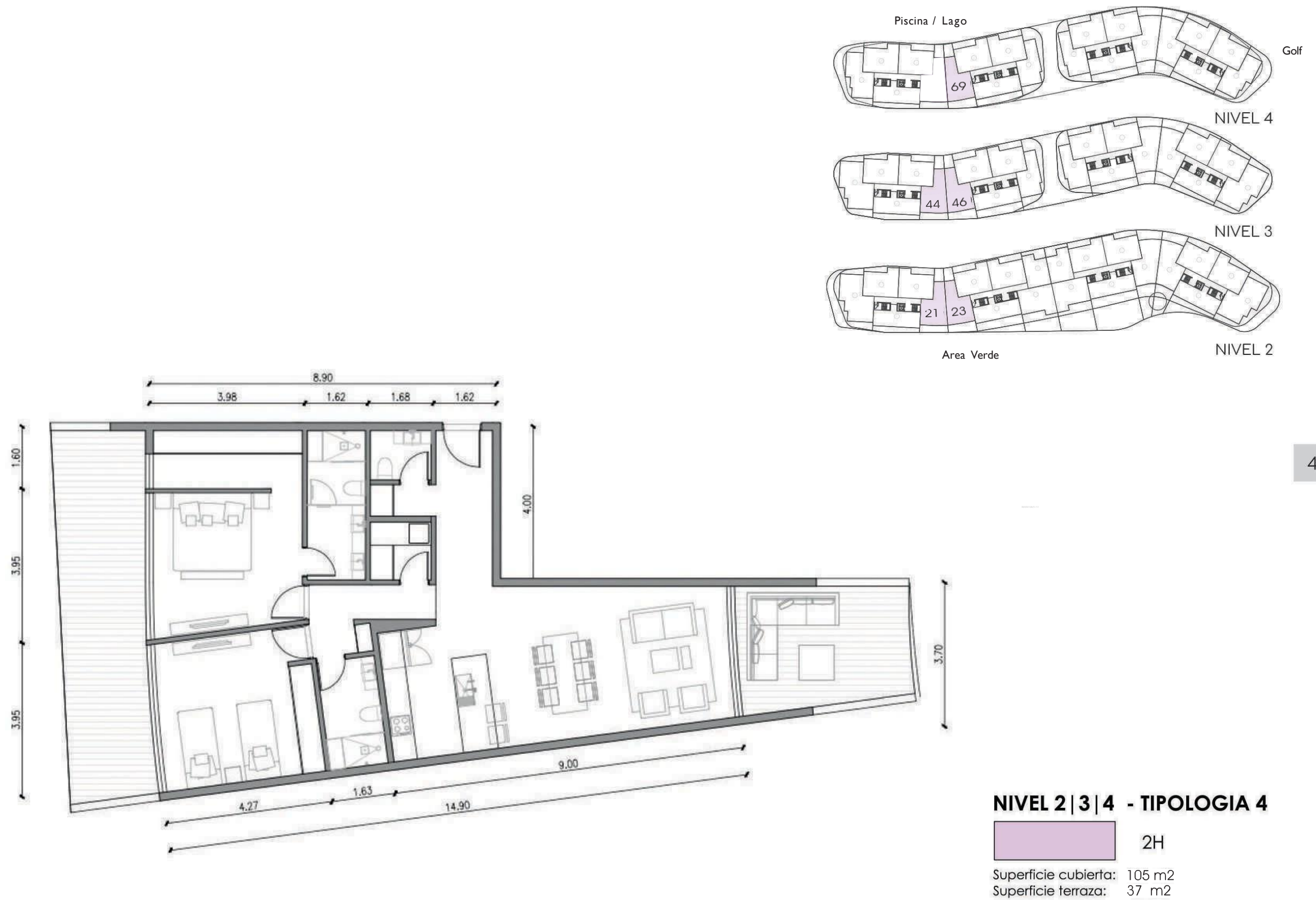
45

NIVEL 2 | 3 | 4 - TIPOLOGIA 3

1H + FAM

Superficie cubierta: 96 m²
Superficie terraza: 45 m²

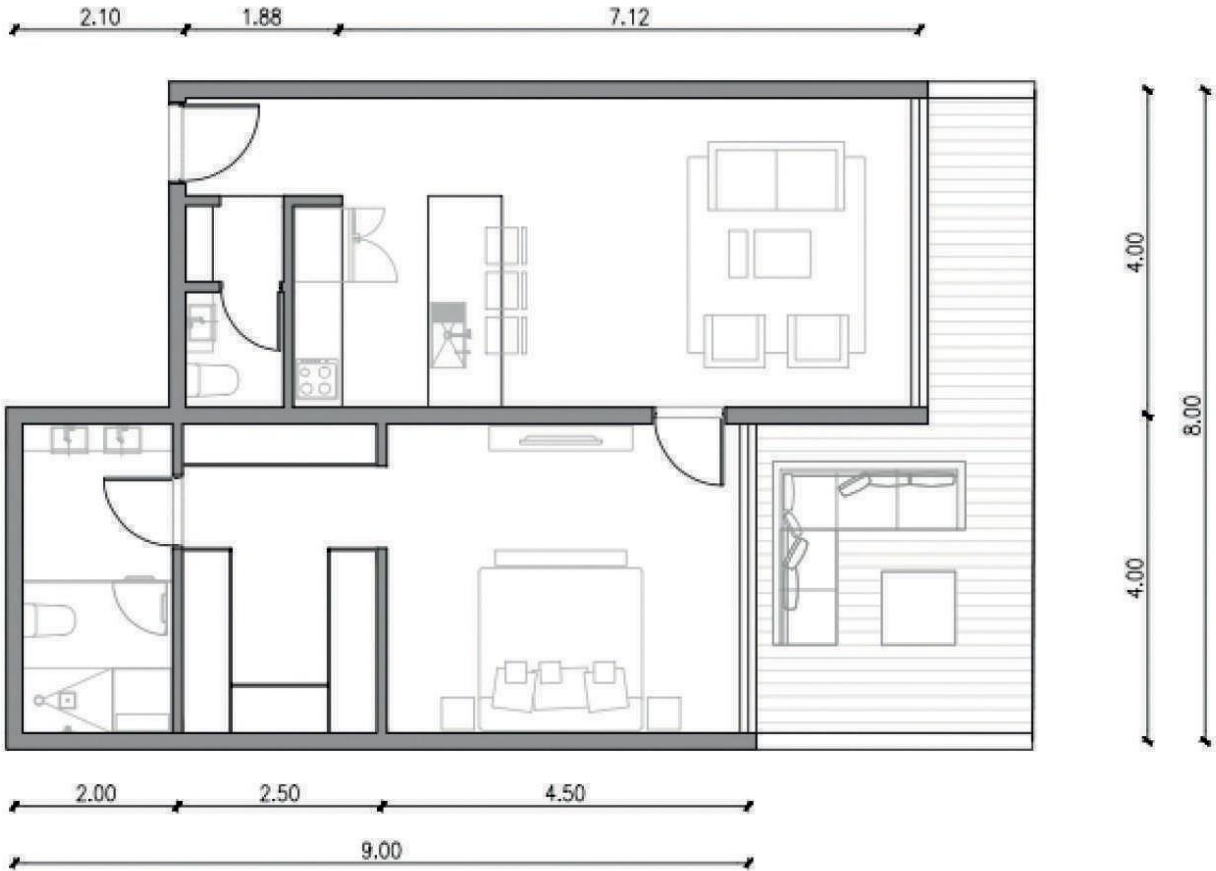
Las imágenes son ilustrativas. Los metrajes pueden tener variaciones, según unidad funcional.



The images are illustrative. The footage may vary depending on the functional unit.



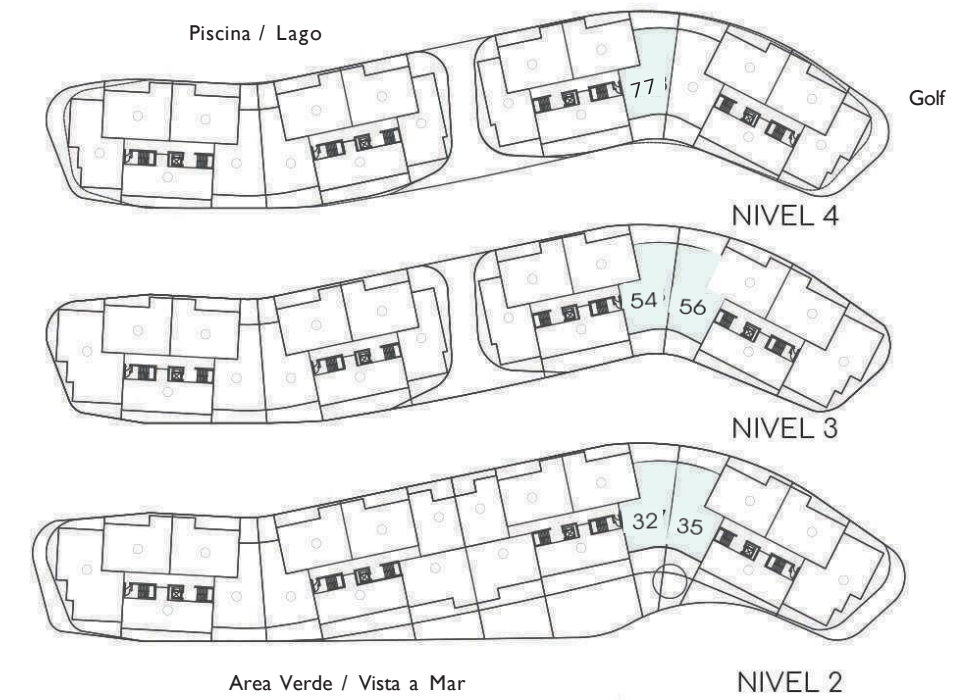
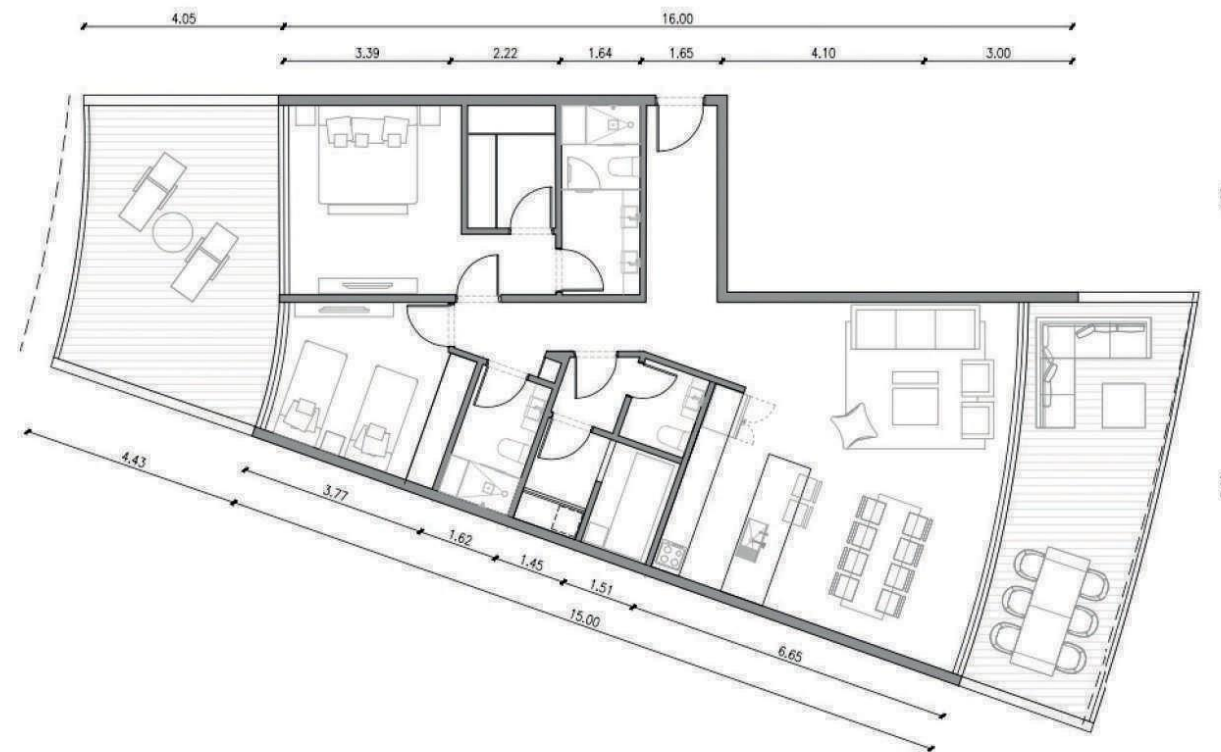
NIVEL 2



NIVEL 2 - TIPOLOGIA 5

	1H
Superficie cubierta:	74 m2
Superficie terraza:	18 m2

Las imágenes son ilustrativas. Los metrajes pueden tener variaciones, según unidad funcional.

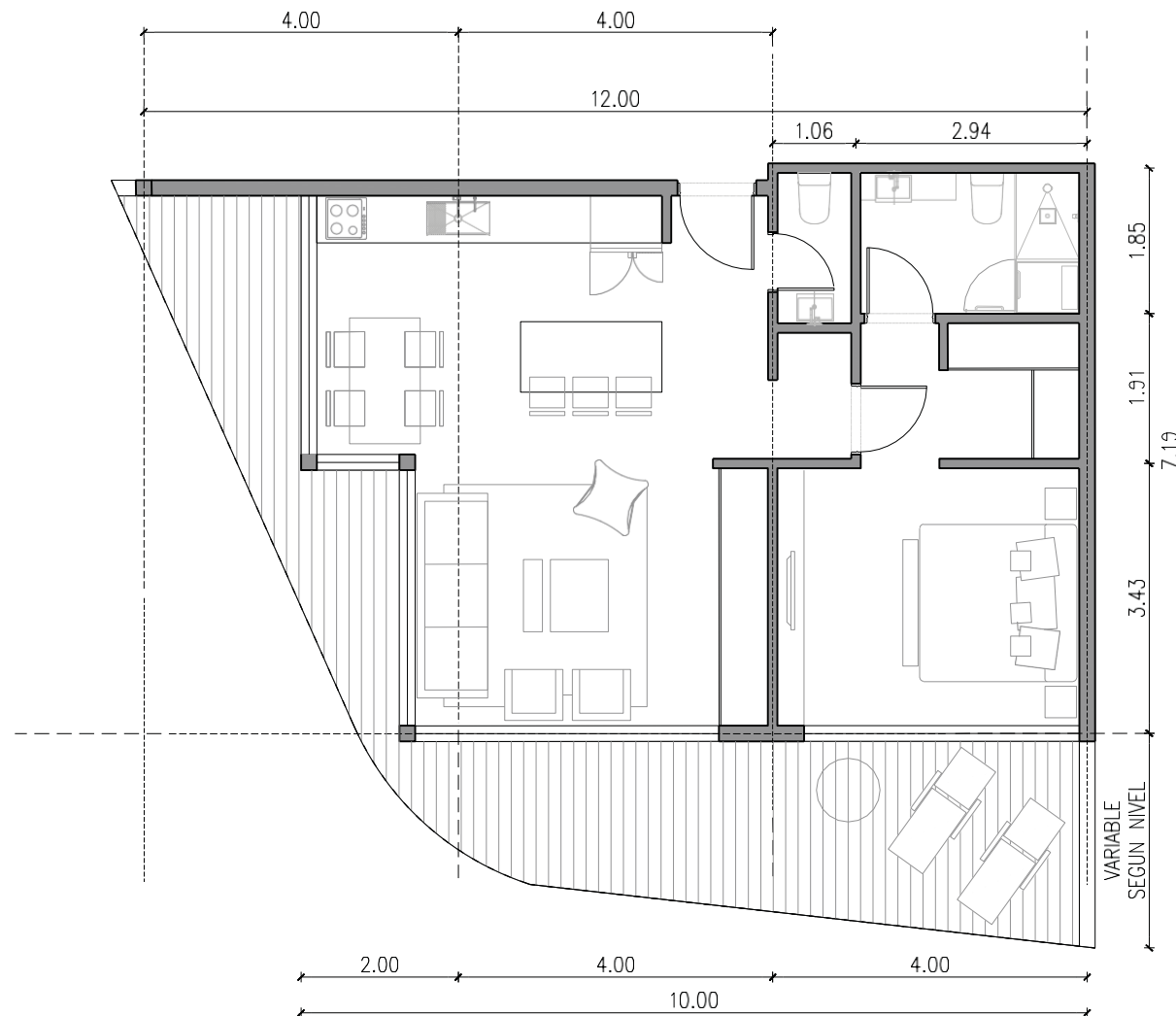


NIVEL 2 | 3 | 4 - TIPOLOGIA 6

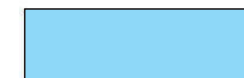


2H + HS

Superficie cubierta: 117 m²
Superficie terraza: 53 m²

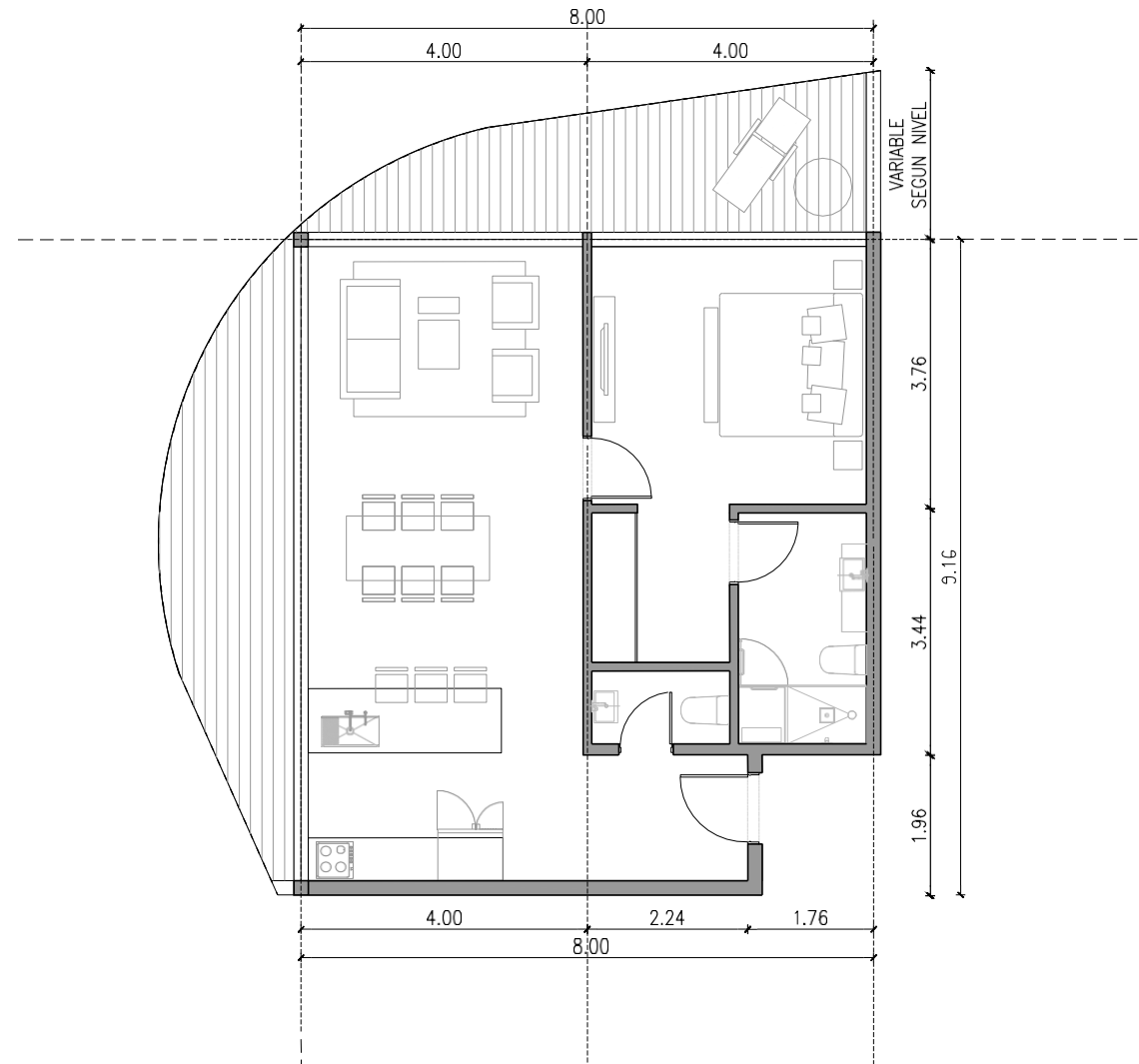


NIVEL 3 - TIPOLOGIA 7




1H

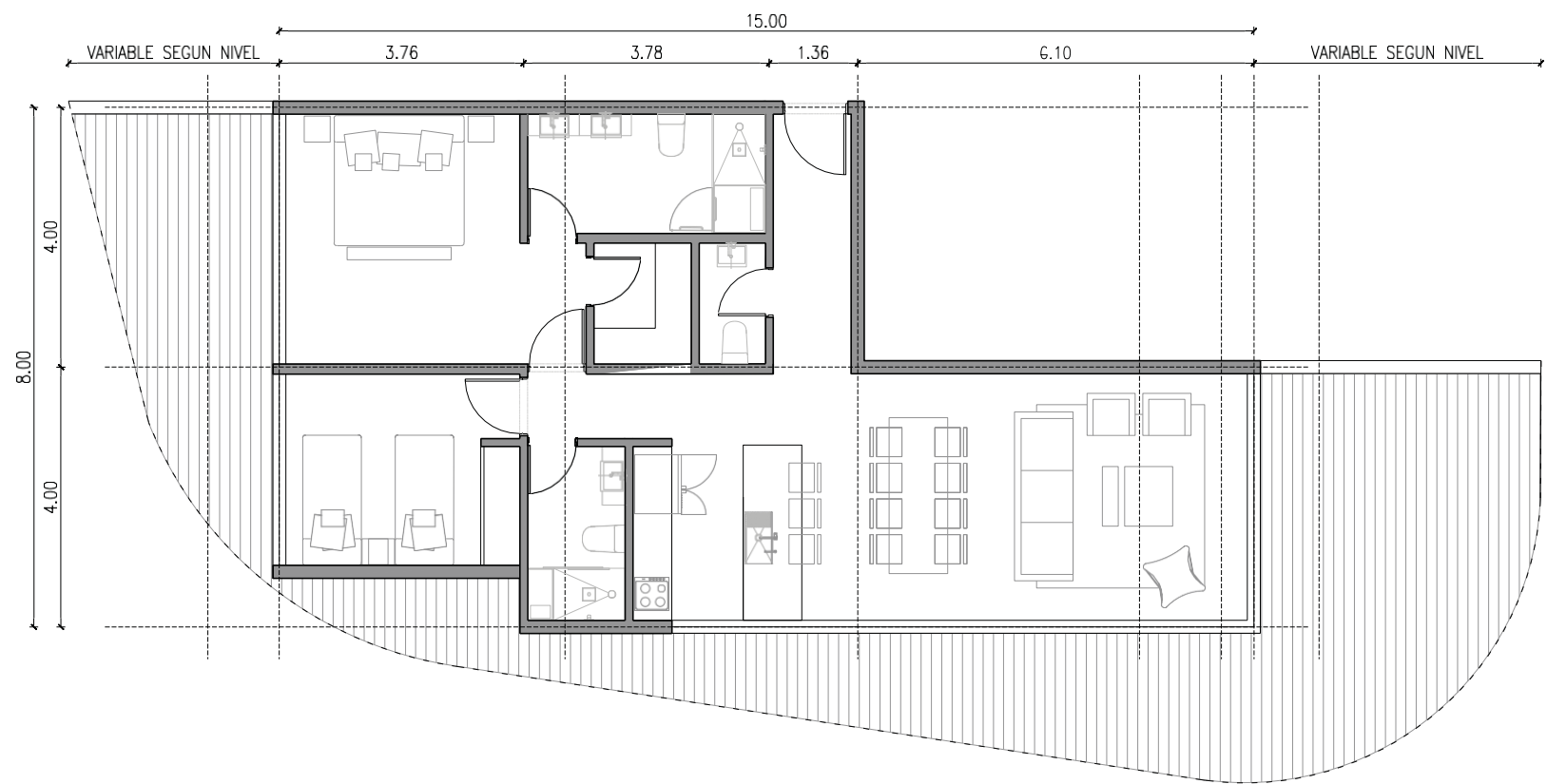
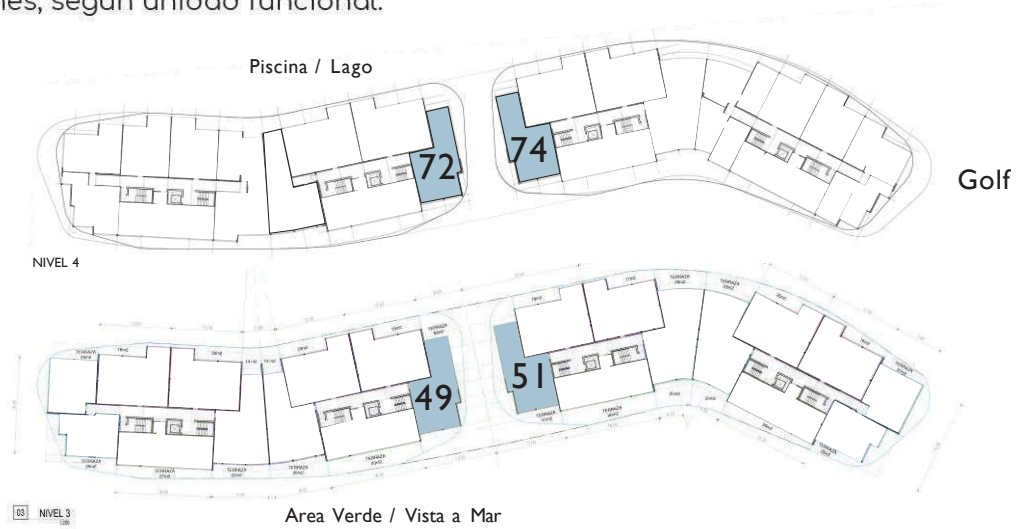
Superficie cubierta: 68 m²
Superficie terraza: 28 m²



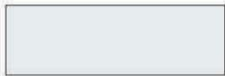
NIVEL 3 - TIPOLOGIA 8

	1H
Superficie cubierta:	71 m2
Superficie terraza:	24 m2

Las imágenes son ilustrativas. Los metrajes pueden tener variaciones, según unidad funcional.



NIVEL 3/4 - TIPOLOGIA 9

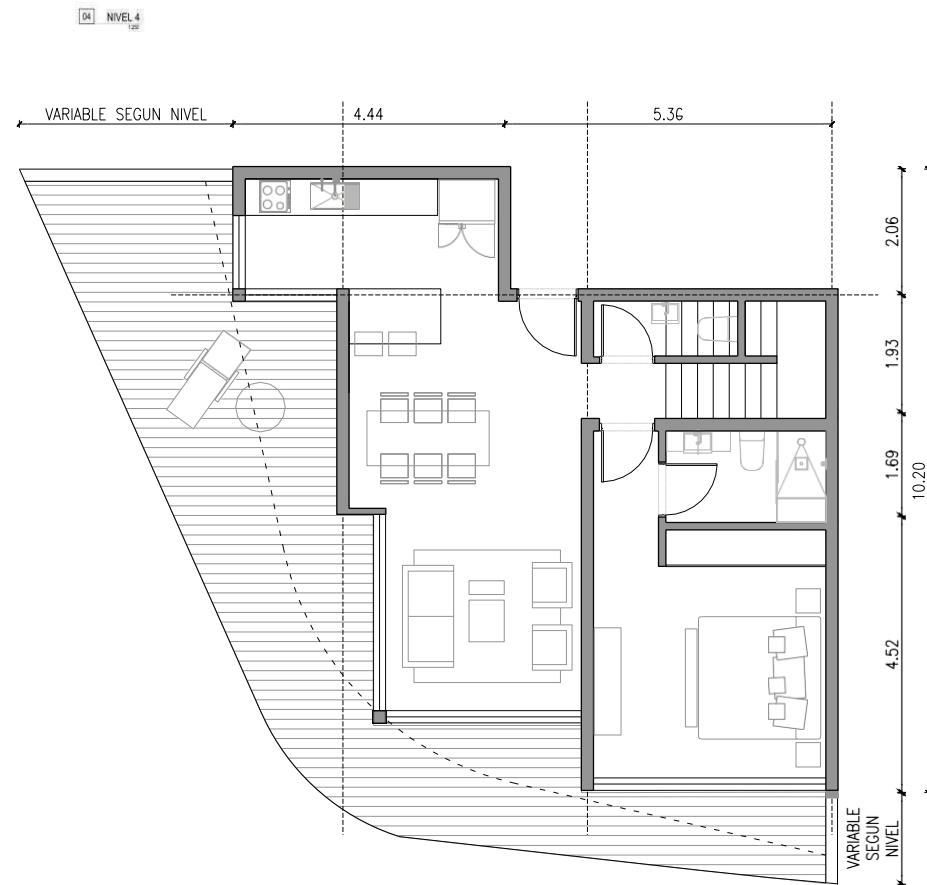
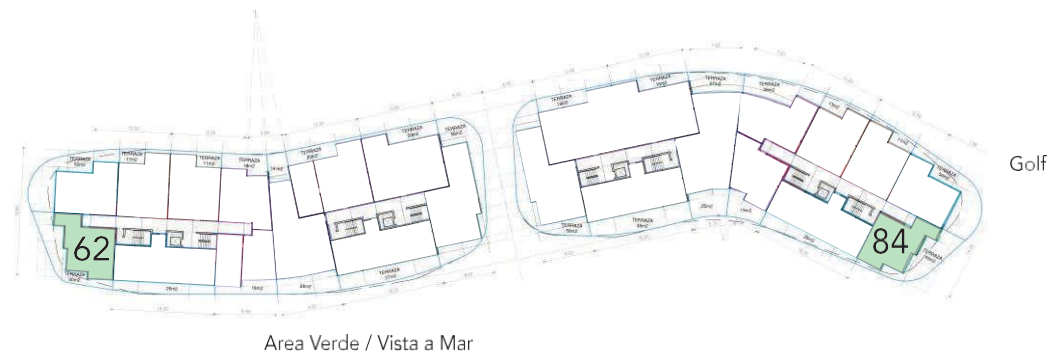


2H

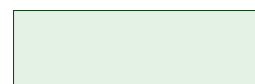
Superficie cubierta: 96 m2
Superficie terraza: 58 m2



The images are illustrative. The footage may vary depending on the functional unit.

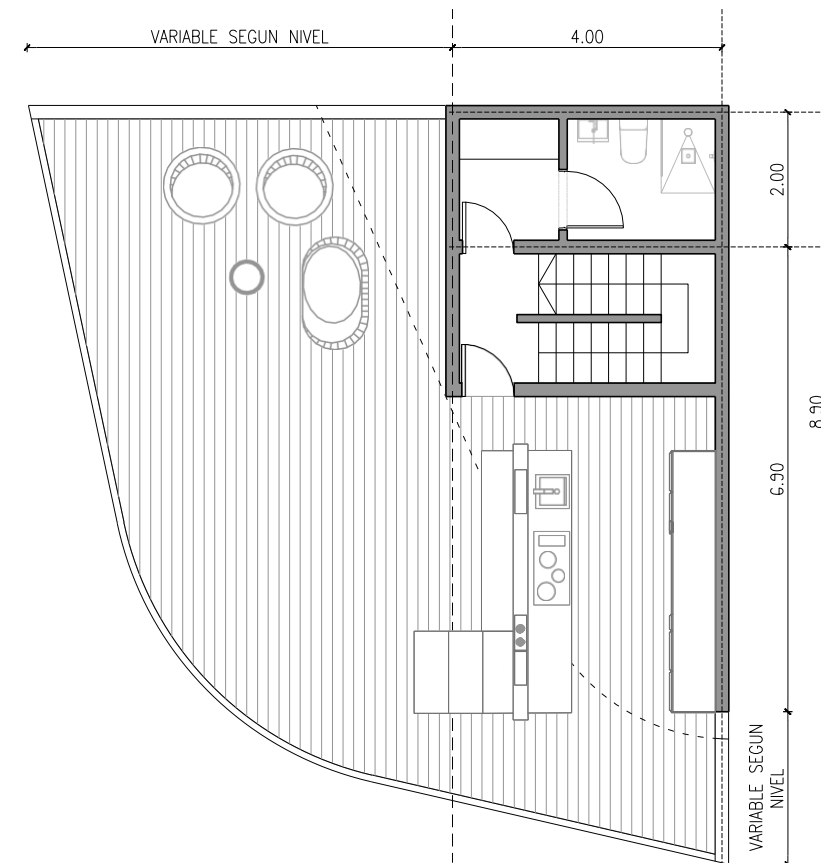


NIVEL 4 | 5 - TIPOLOGIA R1



1H + RT

Superficie cubierta: 86 m²
Superficie terraza: 43 m²



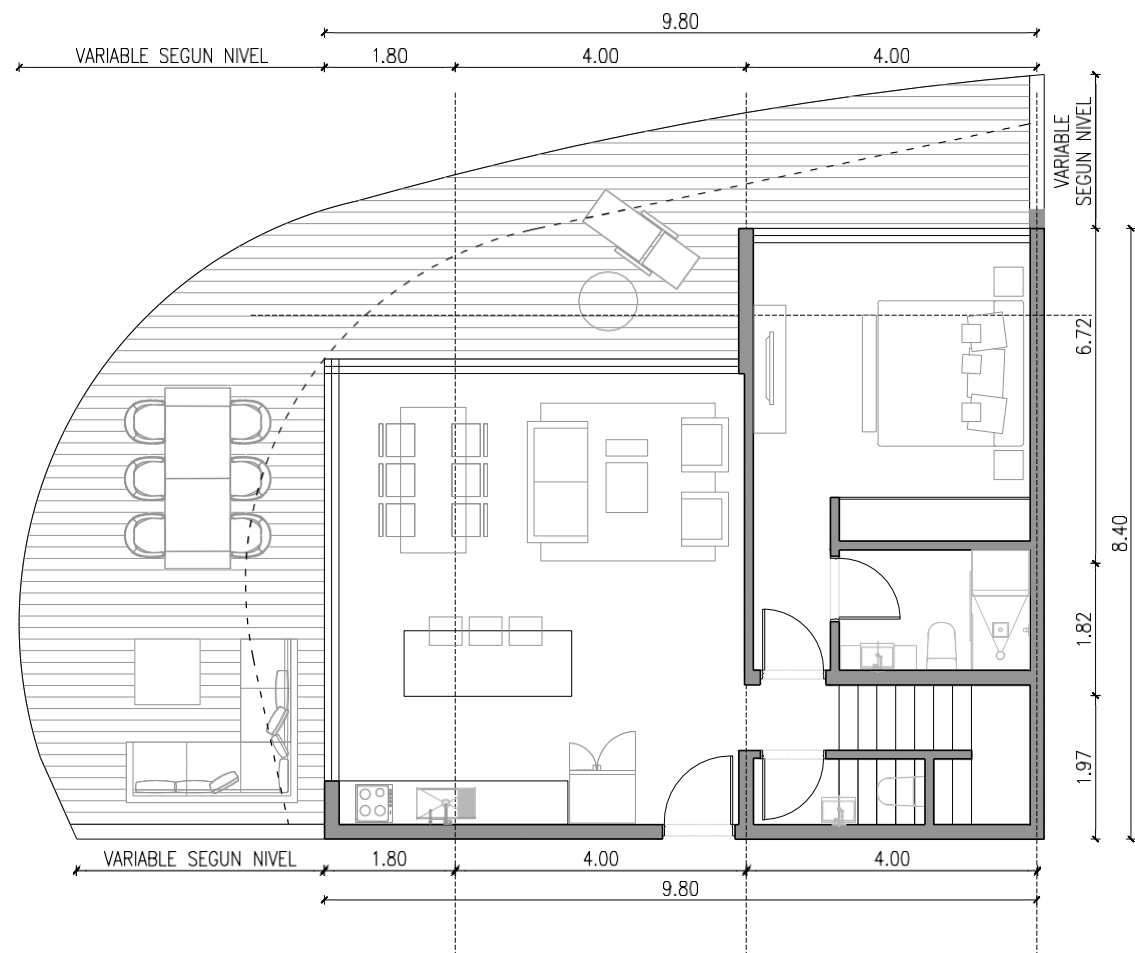
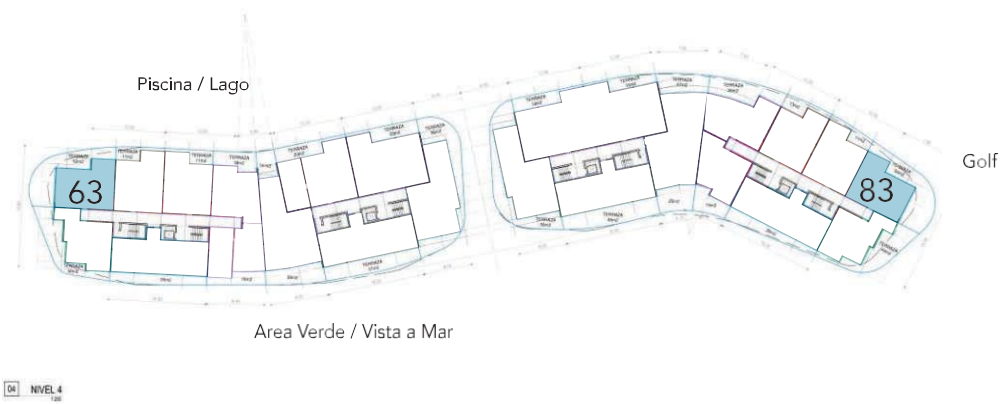
NIVEL 4 | 5 - TIPOLOGIA R1 ROOFTOP



1H + RT

Superficie rooftop: 79 m²

The images are illustrative. The footage may vary depending on the functional unit.

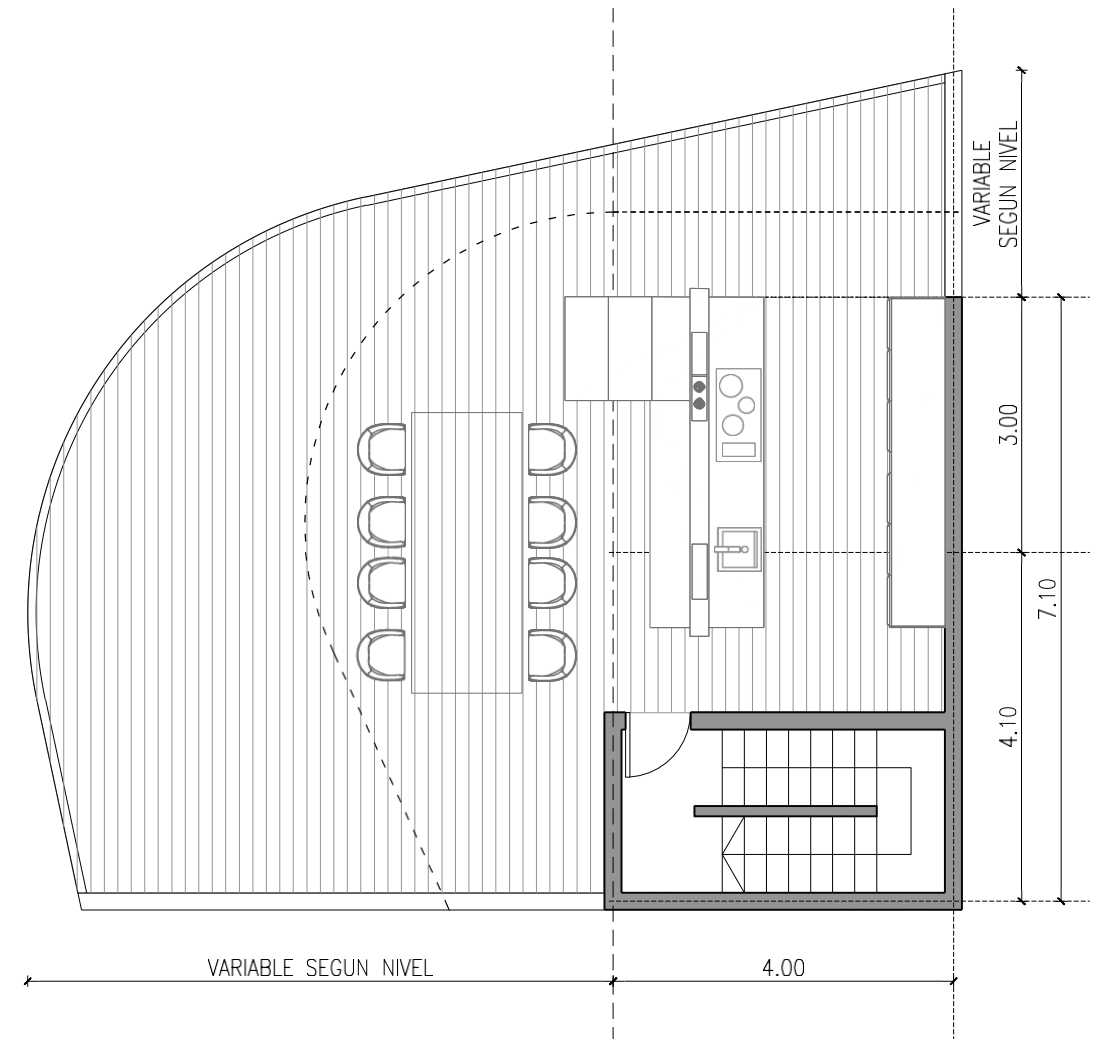


NIVEL 4 | 5 - TIPOLOGIA R2



1H + RT

Superficie cubierta: 80 m²
Superficie terraza: 52 m²



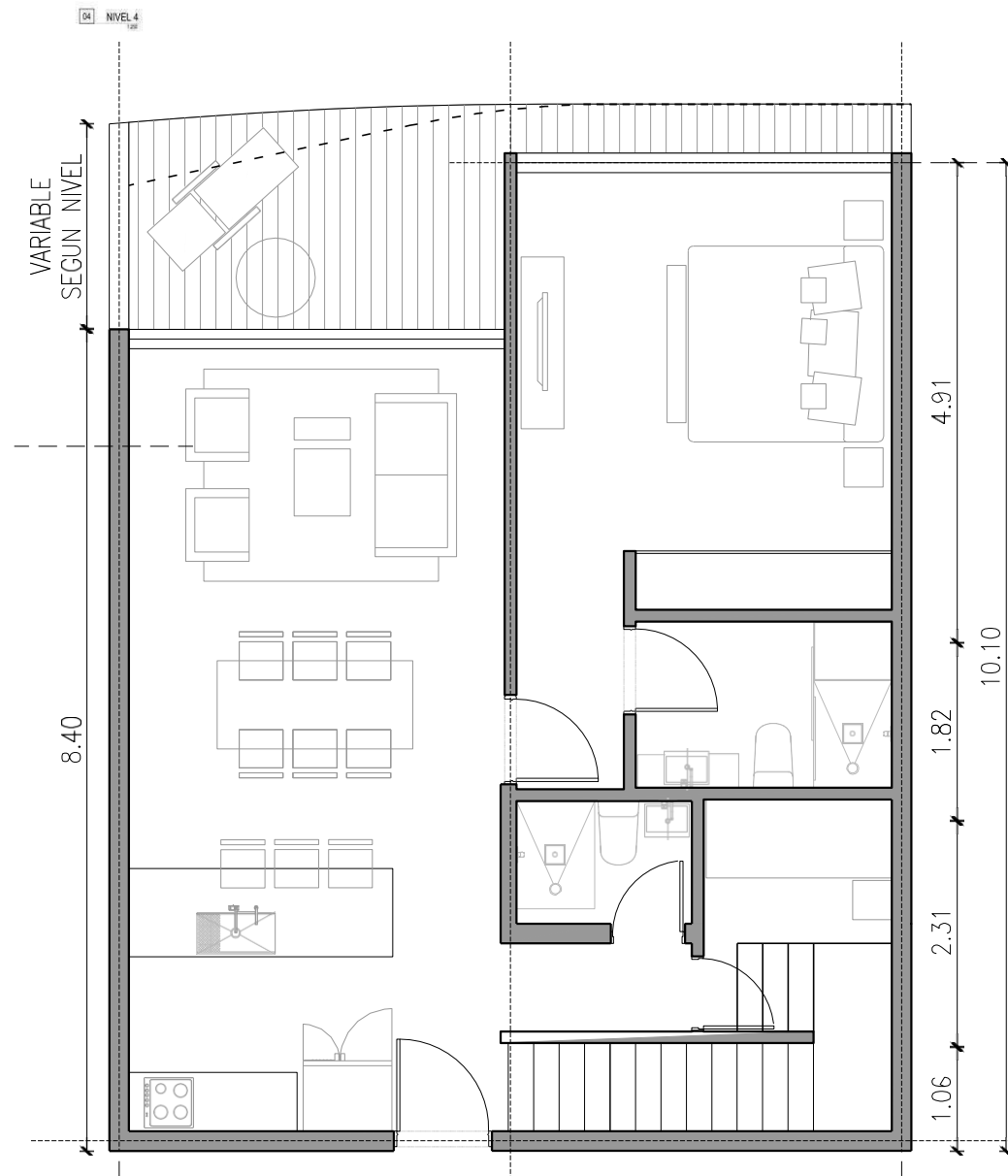
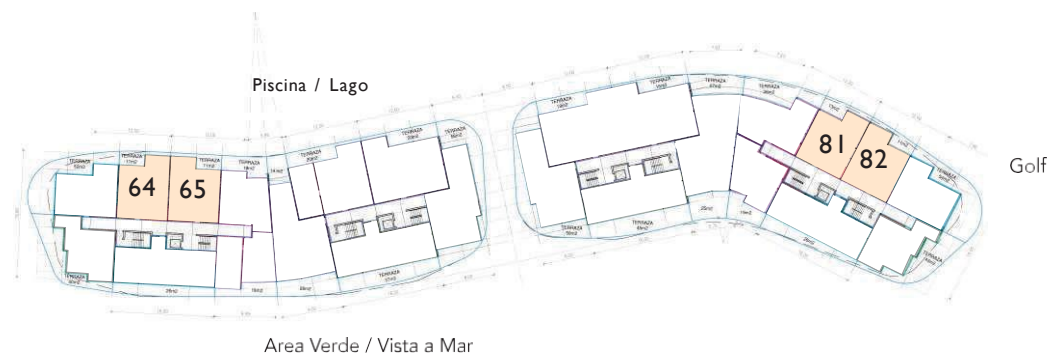
NIVEL 4 | 5 - TIPOLOGIA R2 ROOFTOP



1H + RT

Superficie rooftop: 78 m²

The images are illustrative. The footage may vary depending on the functional unit.

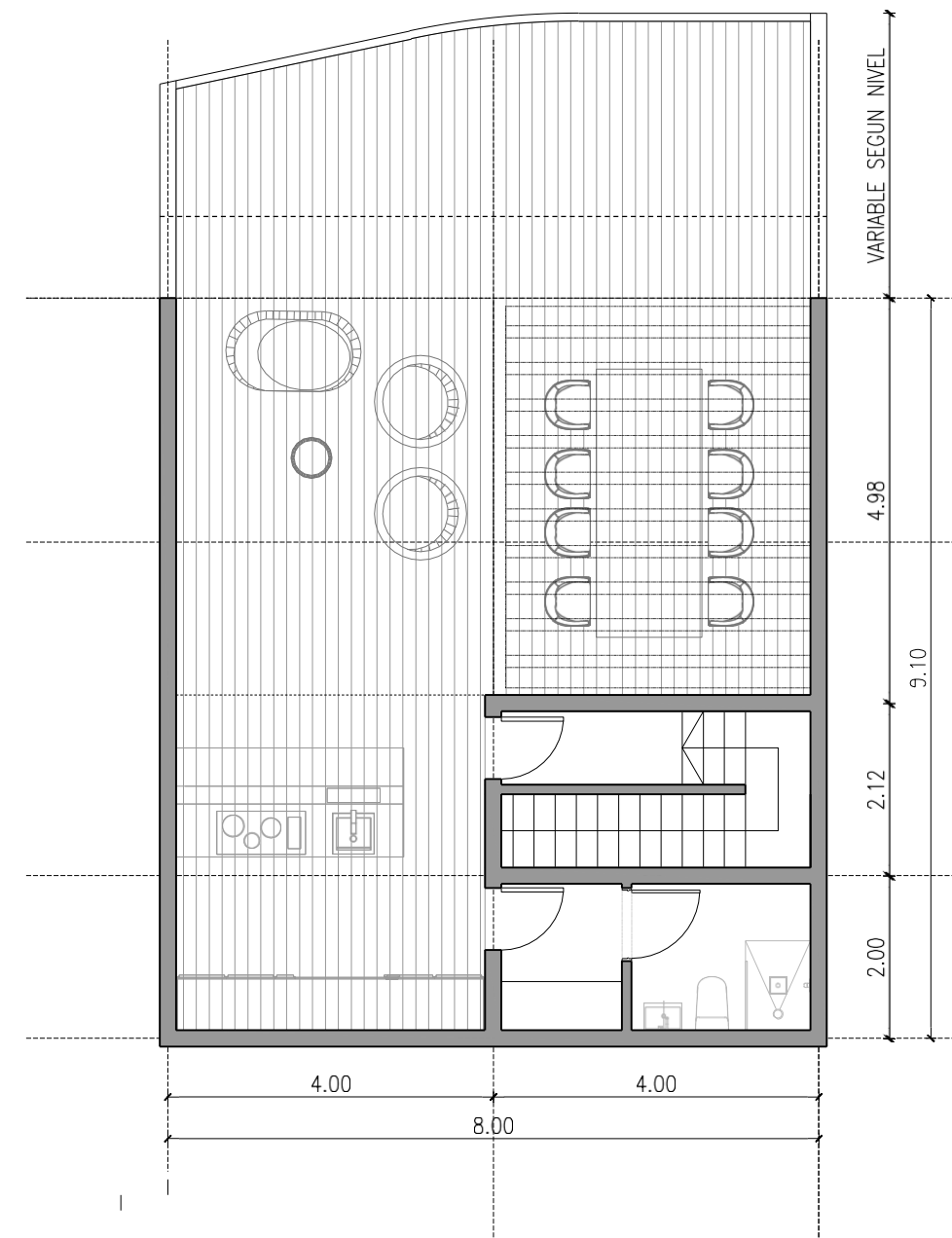


NIVEL 4 | 5 - TIPOLOGIA R3



1H + HS + RT

Superficie cubierta: 92 m²
Superficie terraza: 11 m²



NIVEL 4 | 5 - TIPOLOGIA R3 ROOFTOP



1H + HS + RT

Superficie rooftop: 80 m²

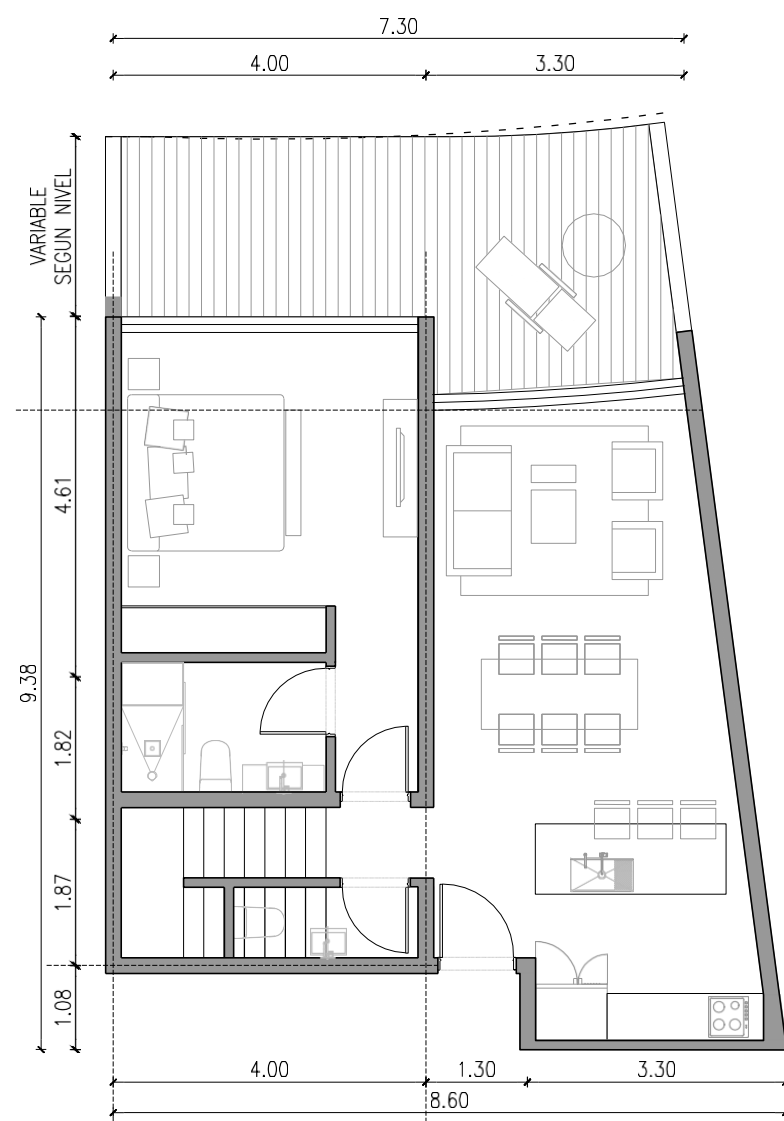
The images are illustrative. The footage may vary depending on the functional unit.



Area Verde / Vista a Mar

Golf

04 NIVEL 4

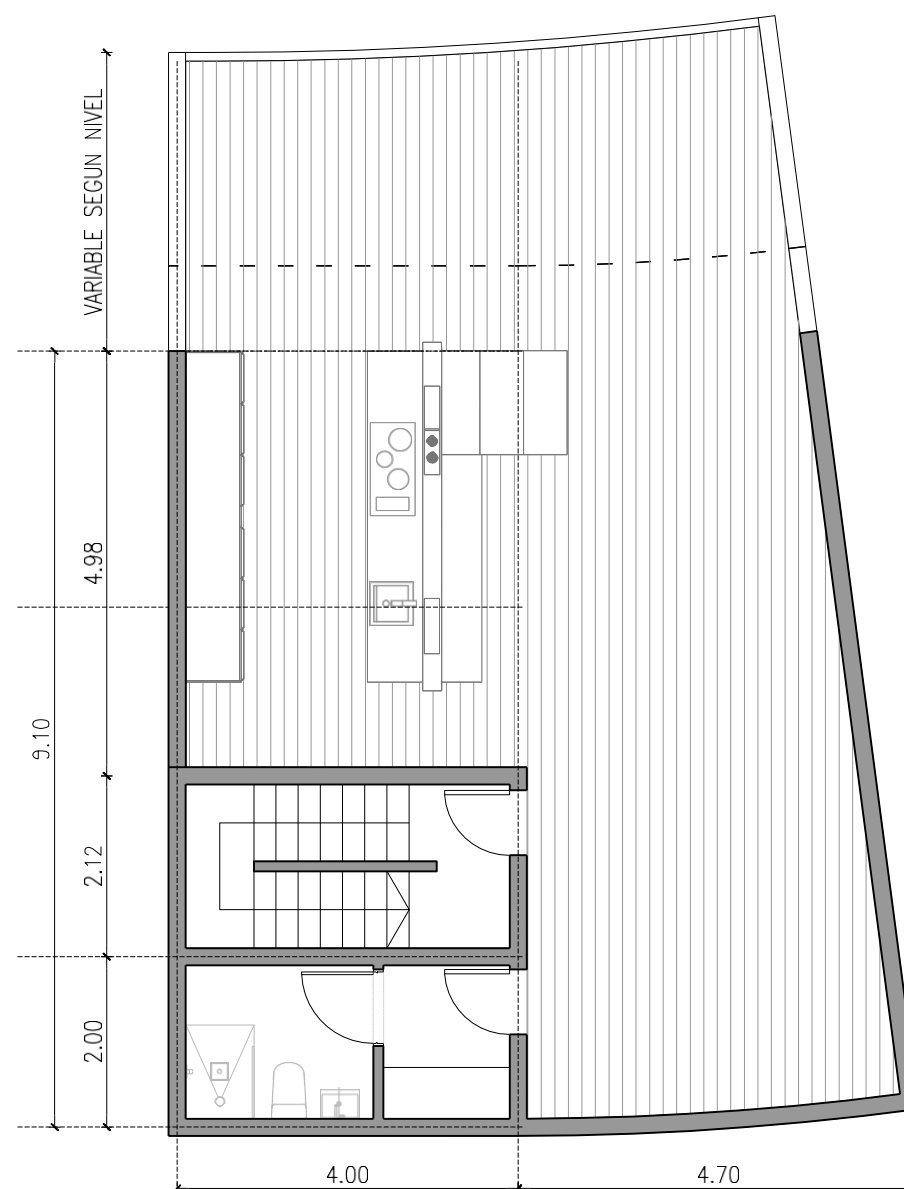


NIVEL 4|5 - TIPOLOGIA R4



1H + RT

Superficie cubierta: 94 m2
Superficie terraza: 36 m2



NIVEL 4|5 - TIPOLOGIA R4 ROOFTOP

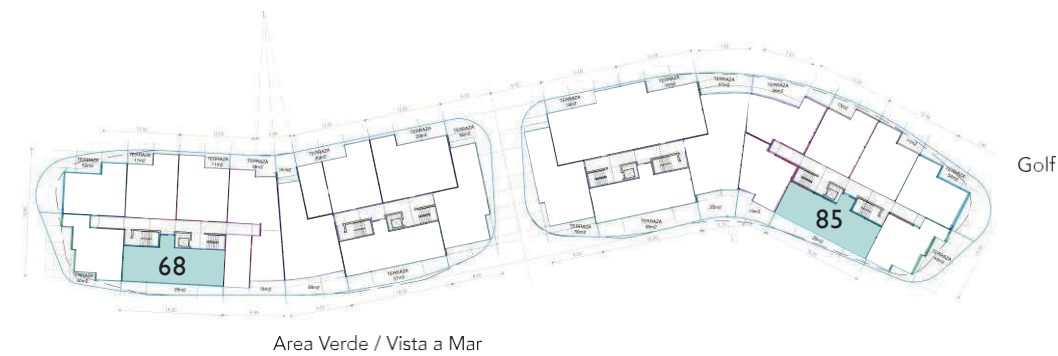


1H + RT

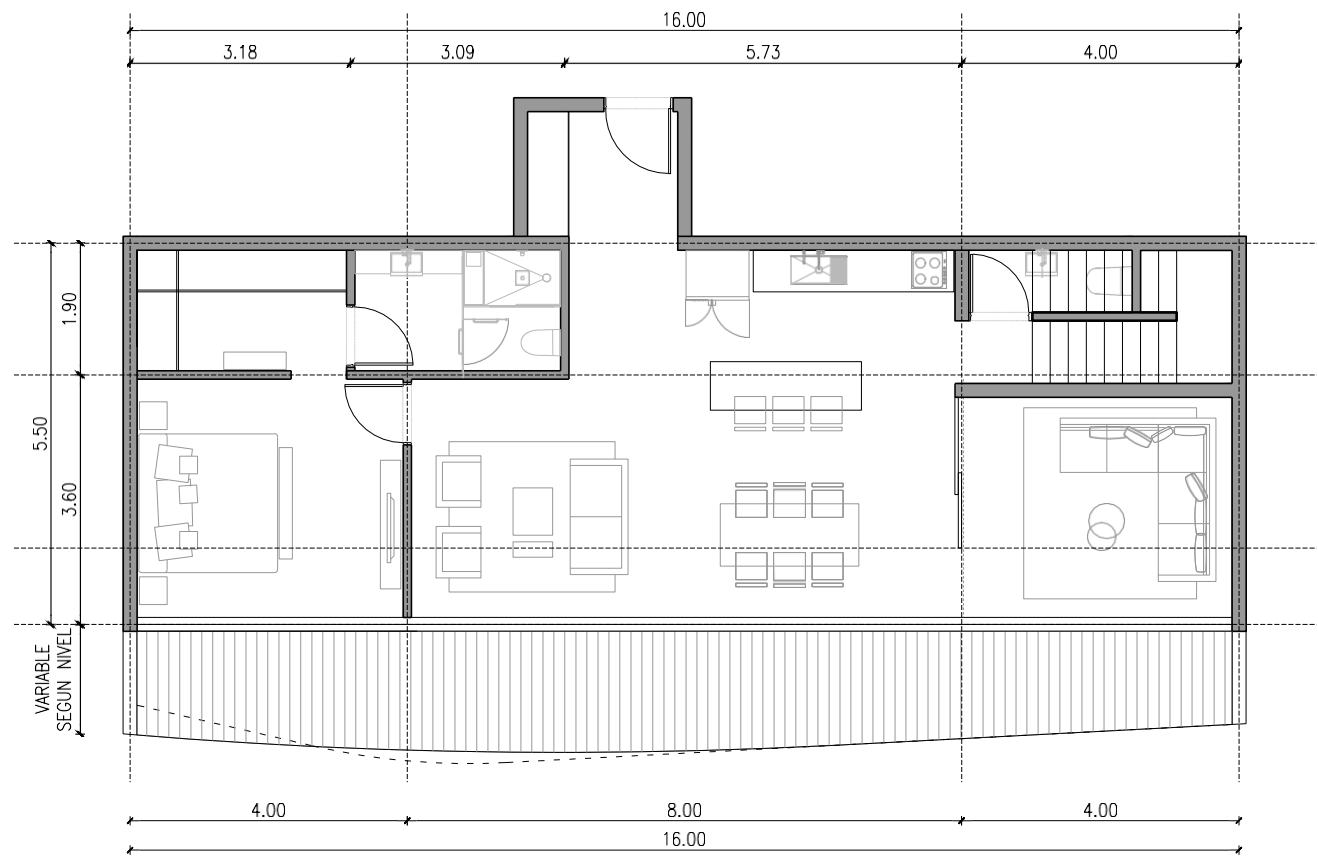
Superficie rooftop: 109 m2

The images are illustrative. The footage may vary depending on the functional unit.

Las imágenes son ilustrativas. Los metrajes pueden tener variaciones, según unidad funcional.



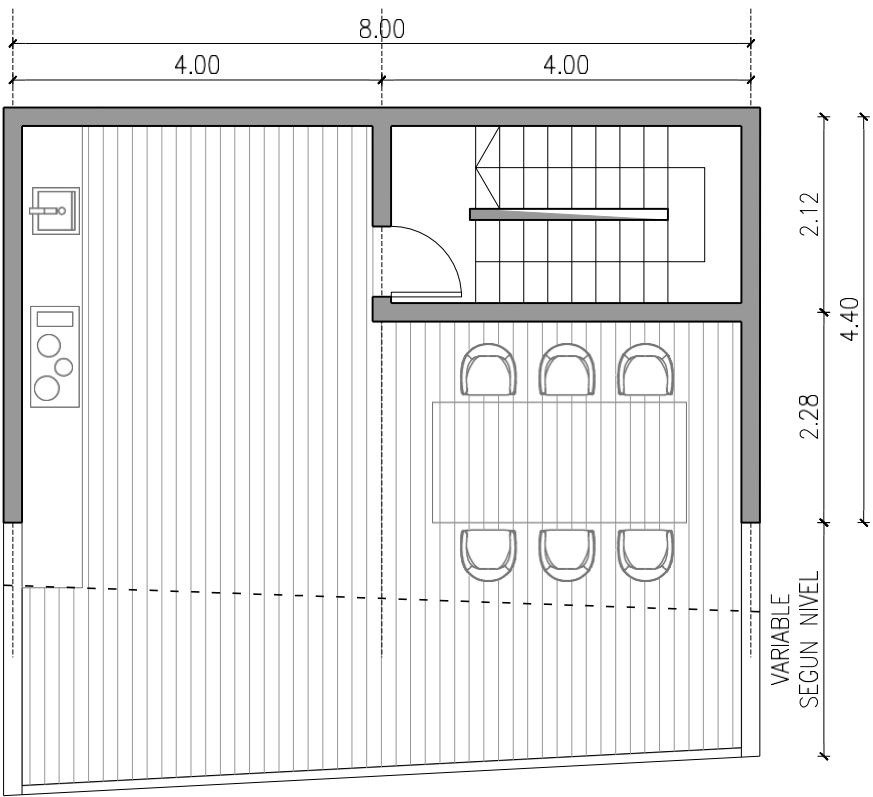
04 NIVEL 4



NIVEL 4 | 5 - TIPOLOGIA R5

1H + FAM + RT

Superficie cubierta: 105 m²
Superficie terraza: 26 m²



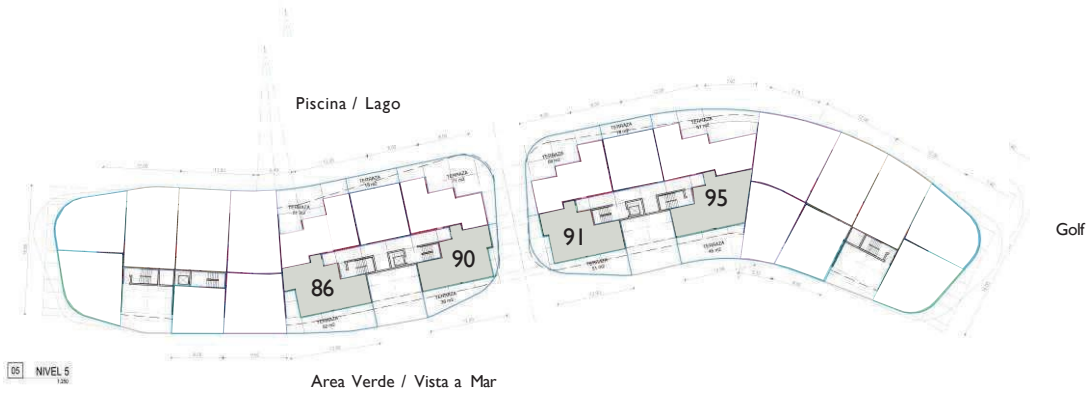
NIVEL 4 | 5 - TIPOLOGIA R5 ROOFTOP

1H + FAM + RT

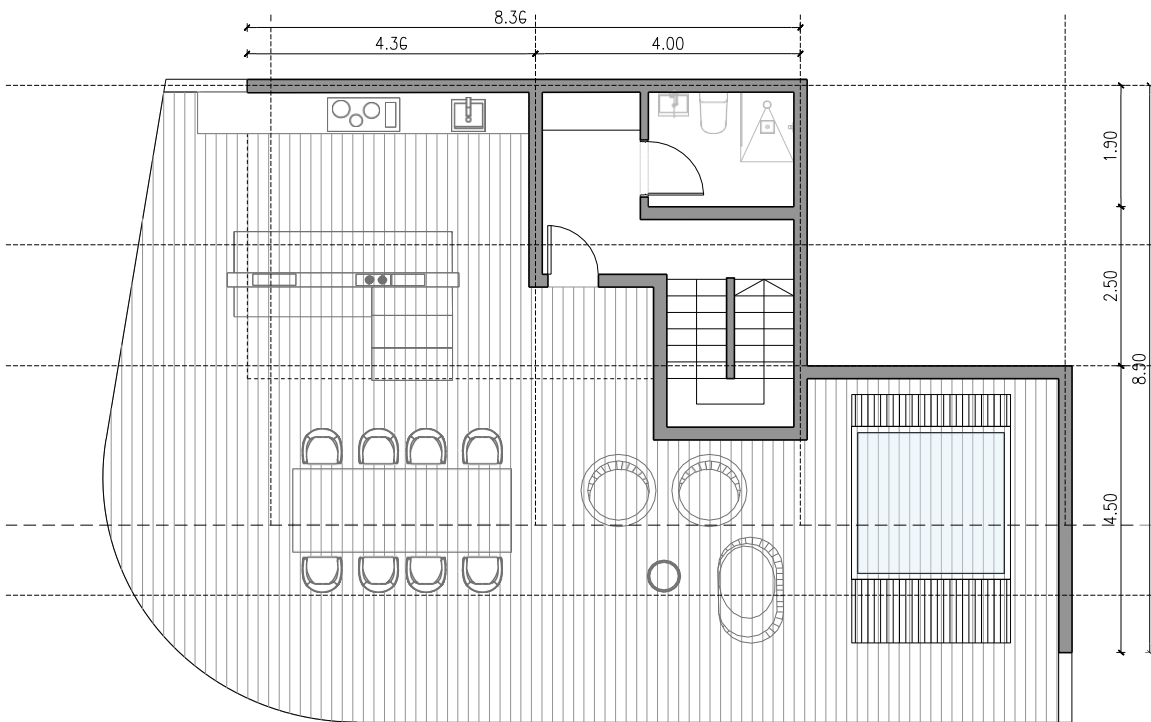
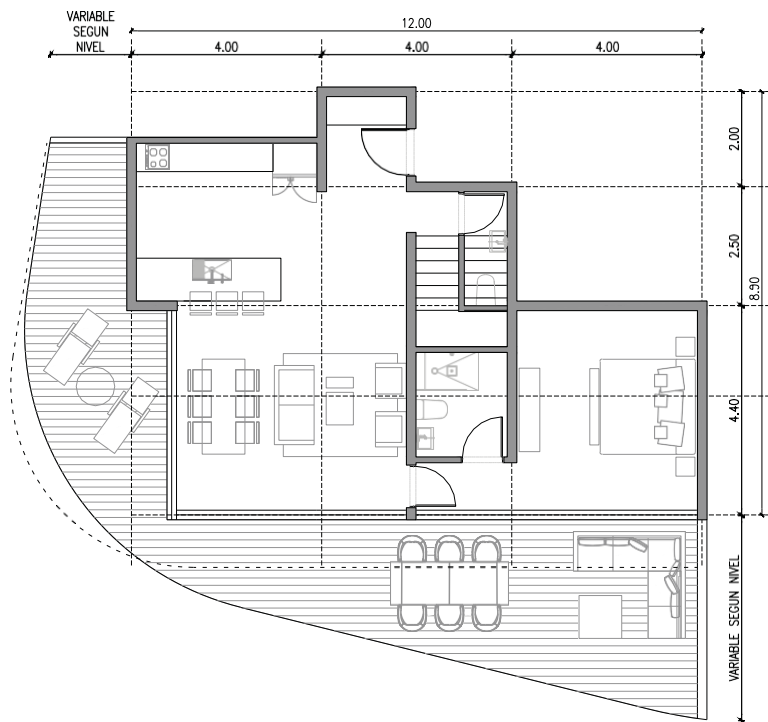
Superficie rooftop: 48 m²

The images are illustrative. The footage may vary depending on the functional unit.

Las imágenes son ilustrativas. Los metrojes pueden tener variaciones, según unidad funcional.




56



NIVEL 5/6 TIPOLOGIA R6

 1H + RT
Superficie cubierta: 99 m²
Superficie terraza: 52 m²

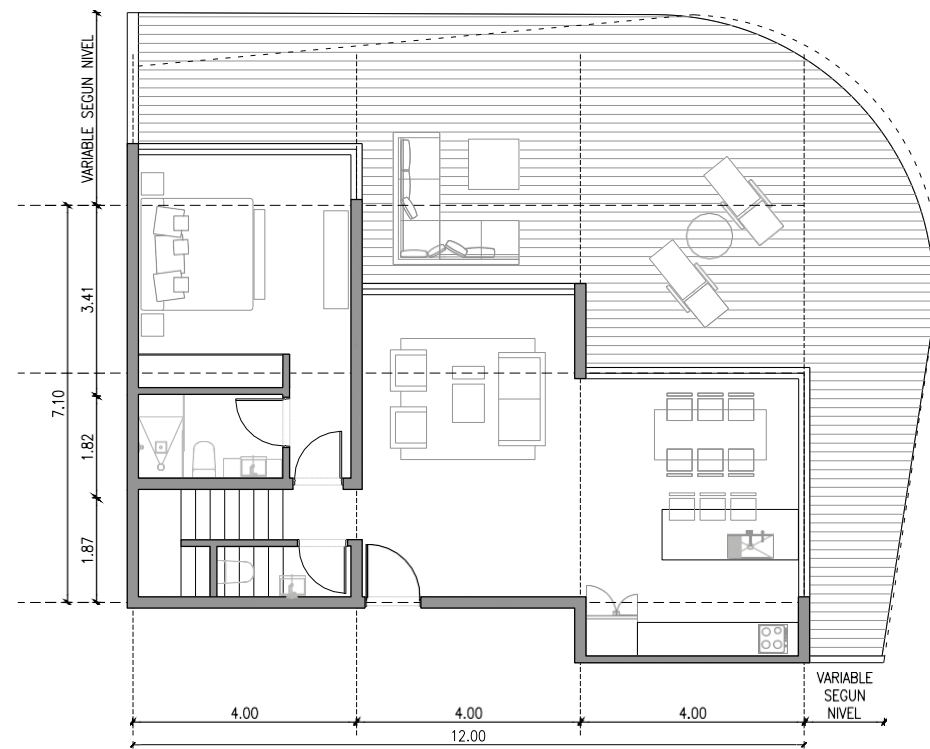
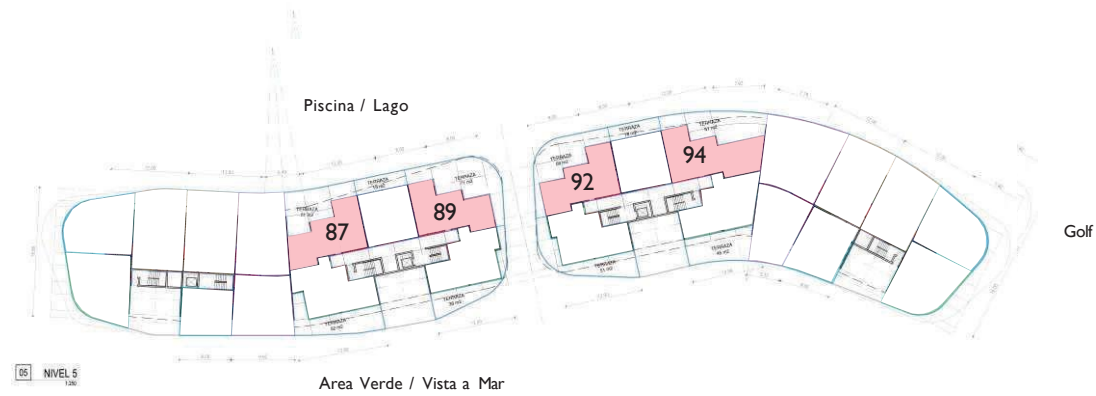
NIVEL 5 - TIPOLOGIA R6 ROOFTOP

 1H + RT
Superficie rooftop: 95 m²



The images are illustrative. The footage may vary depending on the functional unit.

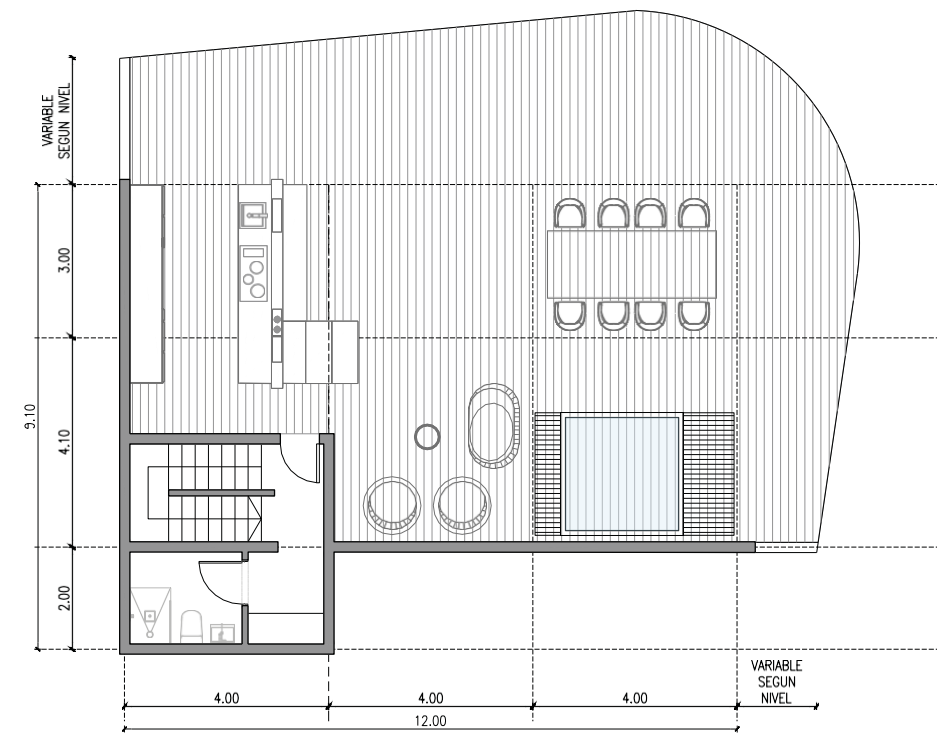
Las imágenes son ilustrativas. Los metrojes pueden tener variaciones, según unidad funcional.



NIVEL 5/6 - TIPOLOGIA R7



Superficie cubierta: 95 m²
Superficie terraza: 61 m²



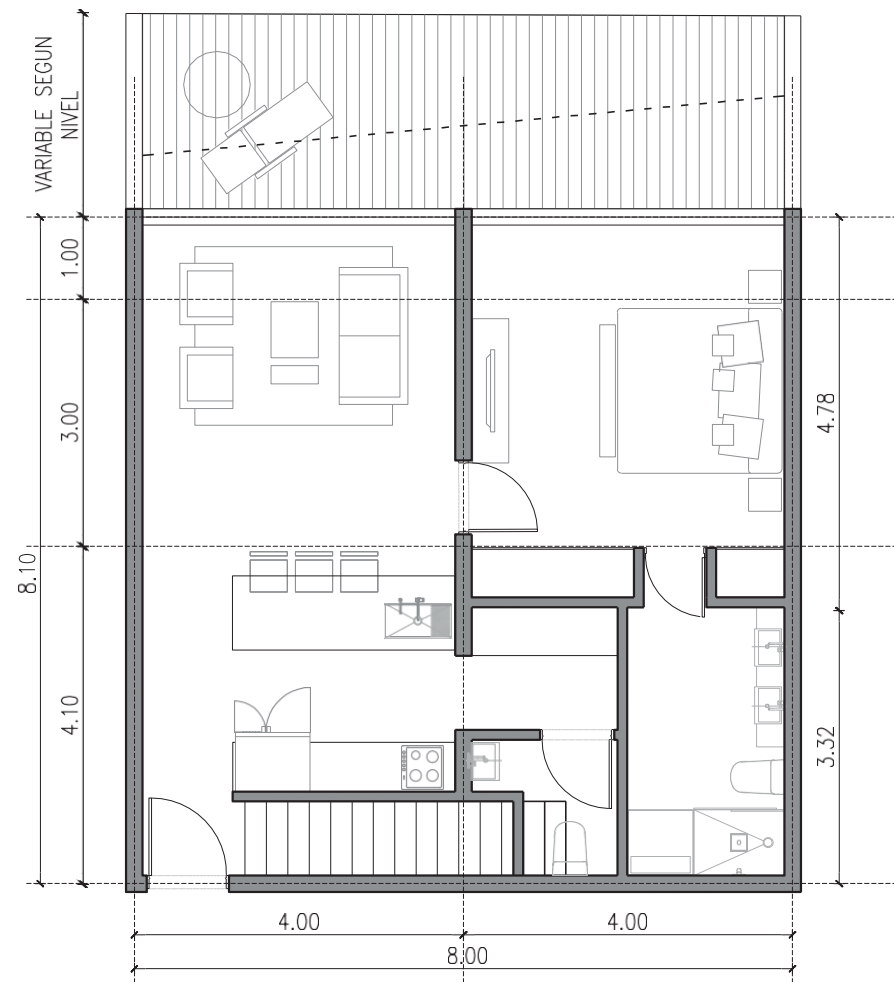
NIVEL 5/6 TIPOLOGIA R7 ROOFTOP



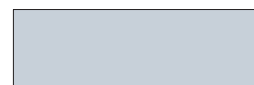
Superficie roof top: 114 m²



The images are illustrative. The footage may vary depending on the functional unit.

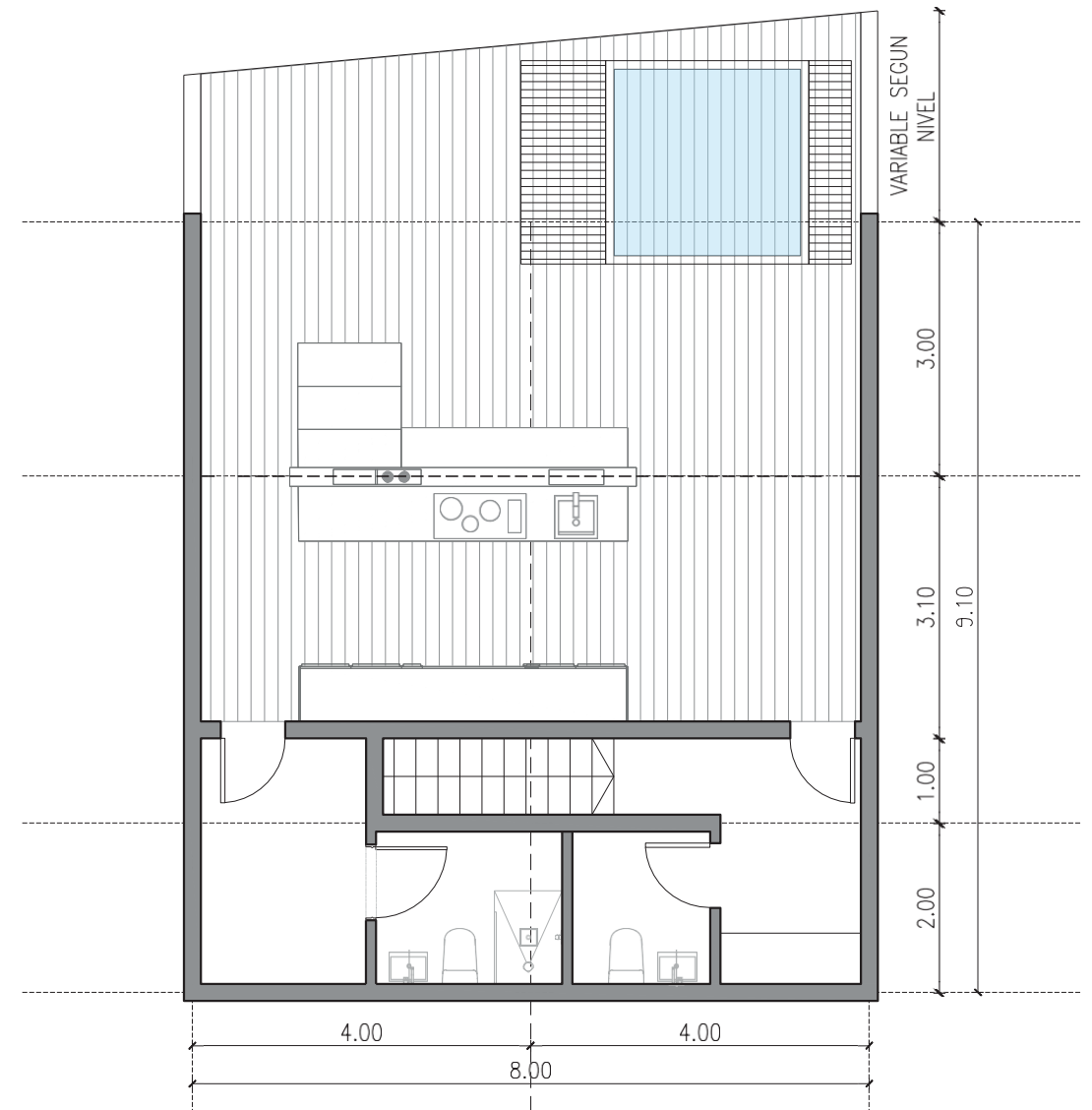


NIVEL 5 | 6 - TIPOLOGIA R8

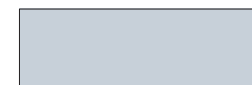


IH + RT

Superficie cubierta: 65 m²
Superficie terraza: 20 m²



NIVEL 5 | 6 - TIPOLOGIA R8 ROOFTOP



IH + RT

Superficie rooftop: 65 m²

The images are illustrative. The footage may vary depending on the functional unit.