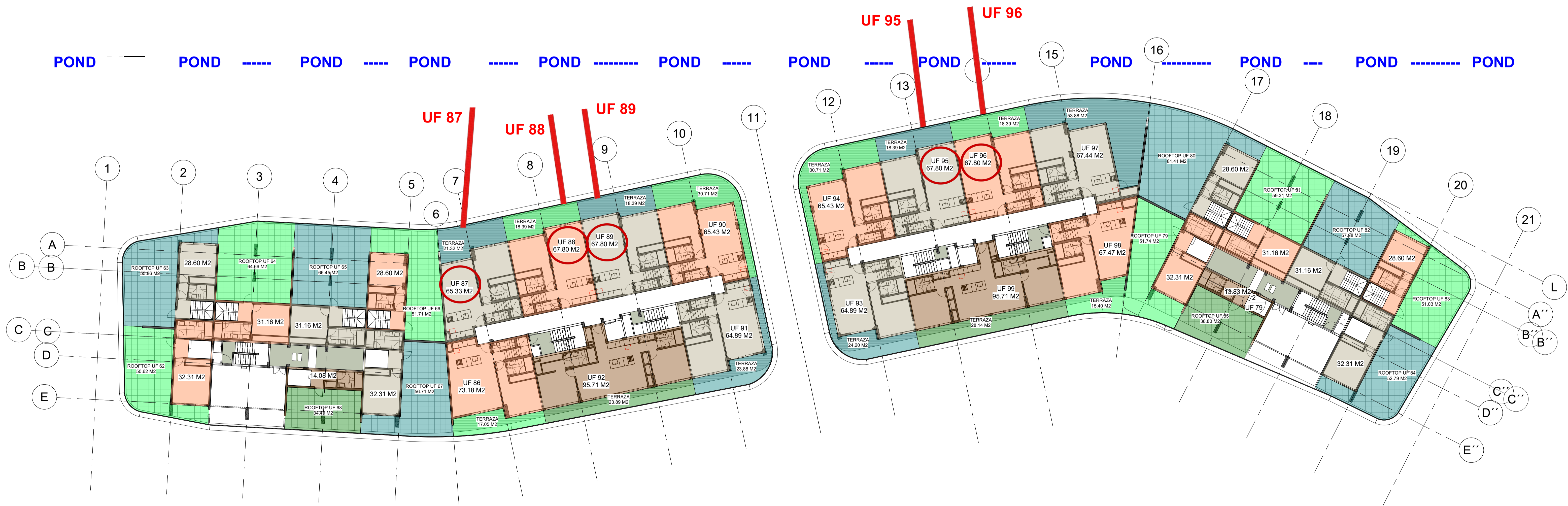


# CAP CANA REEF & GOLF RESIDENCE

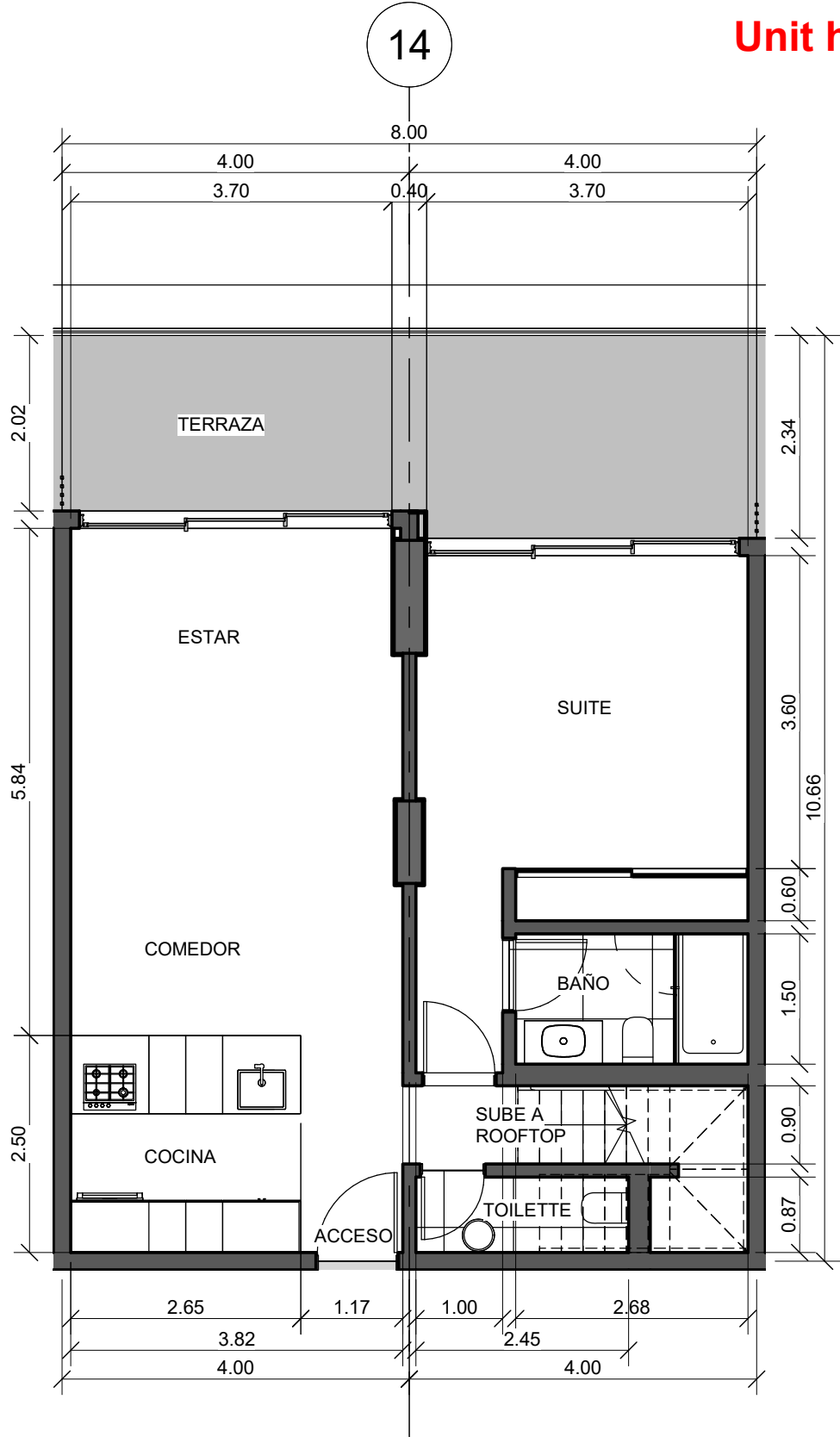
**ALL 5 UNITS OFFER VIEWS OF THE GOLF COURSE AND POND!**

**DEPOSIT STRUCTURE**  
20% - 40% - 40%

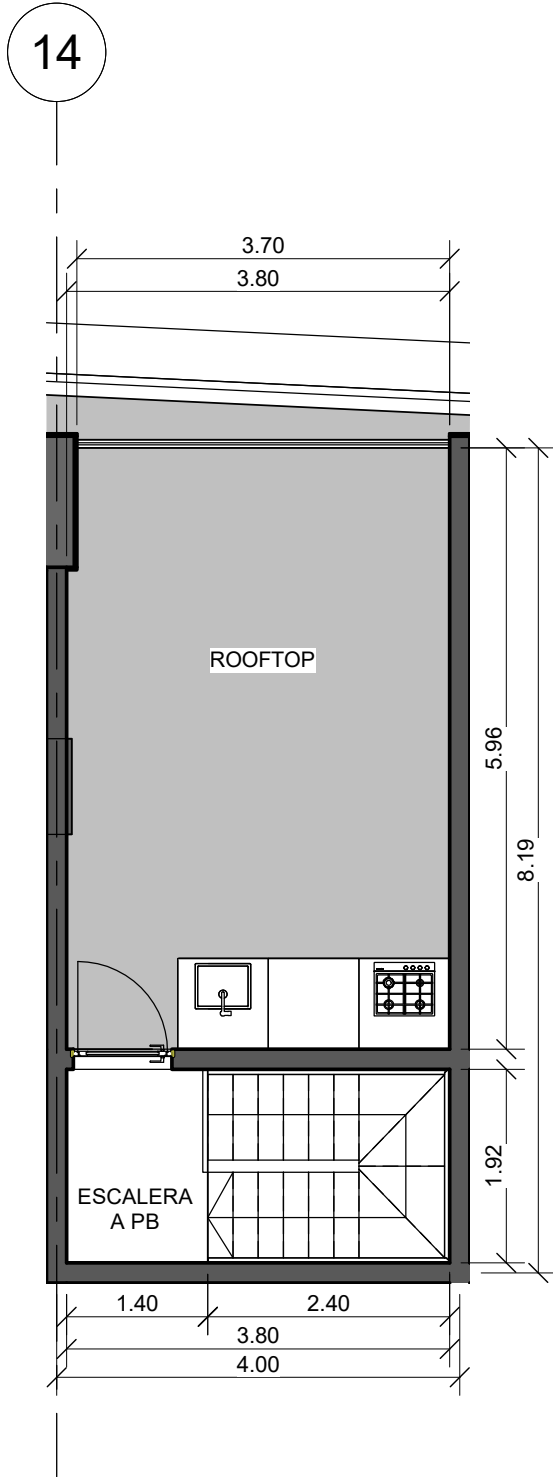


Nivel 5  
1:200

**Unit has 2 kitchens and Covered Rooftop Terrace  
Total Area 111 m2 - 1195 sq,ft**



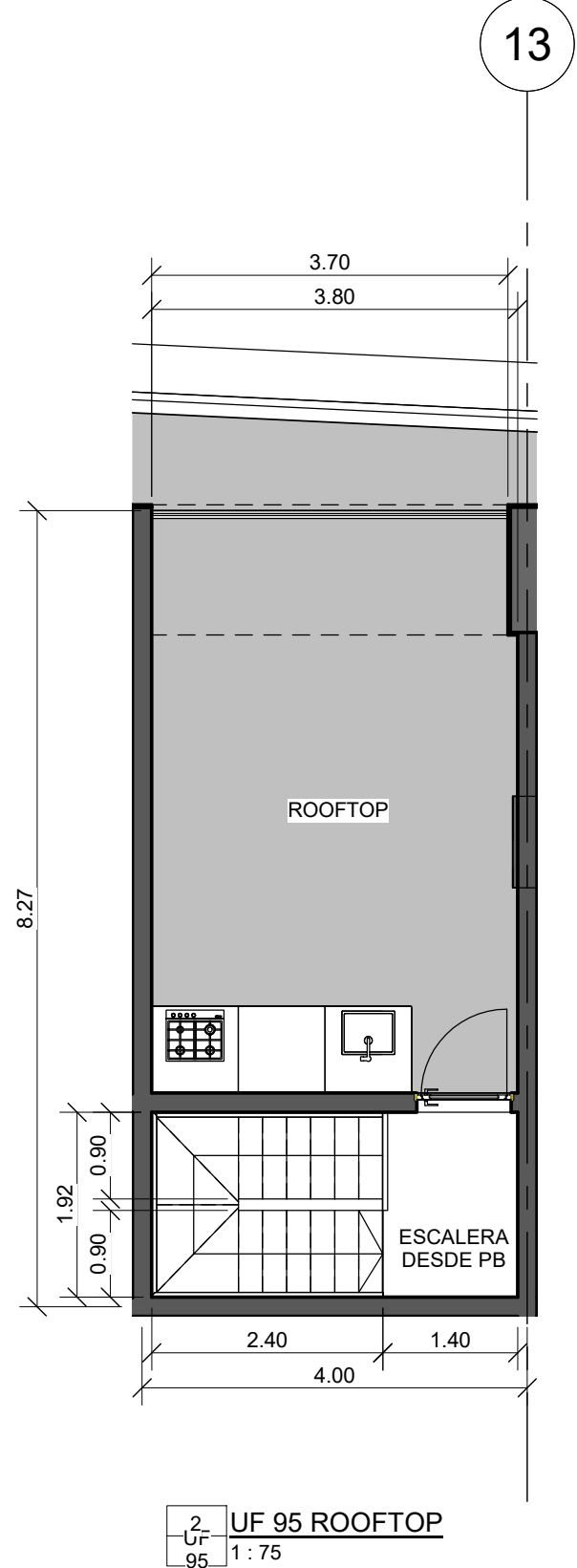
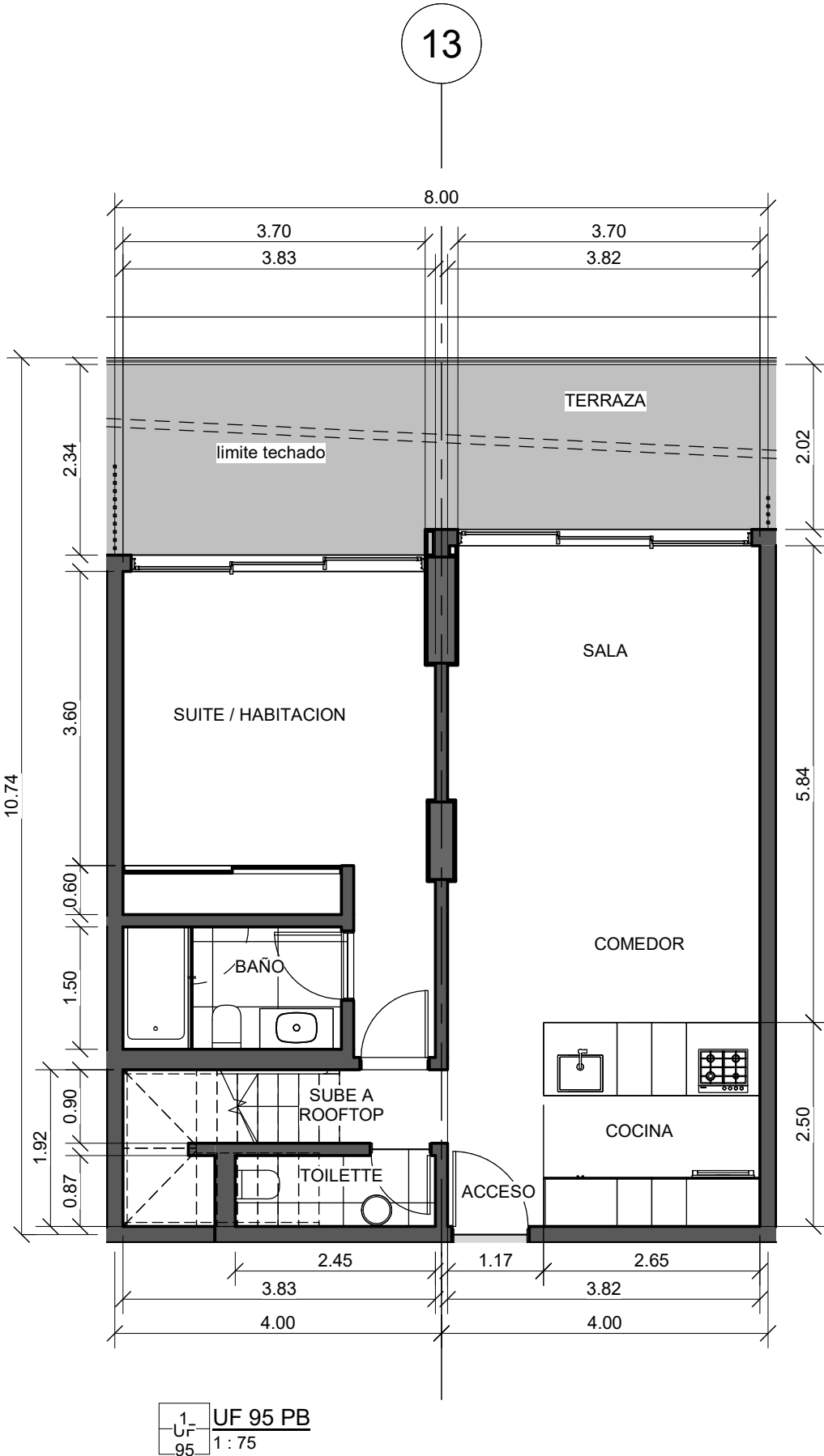
1 UF 96 PB  
1:75



2 UF 96 ROOFTOP  
1:75

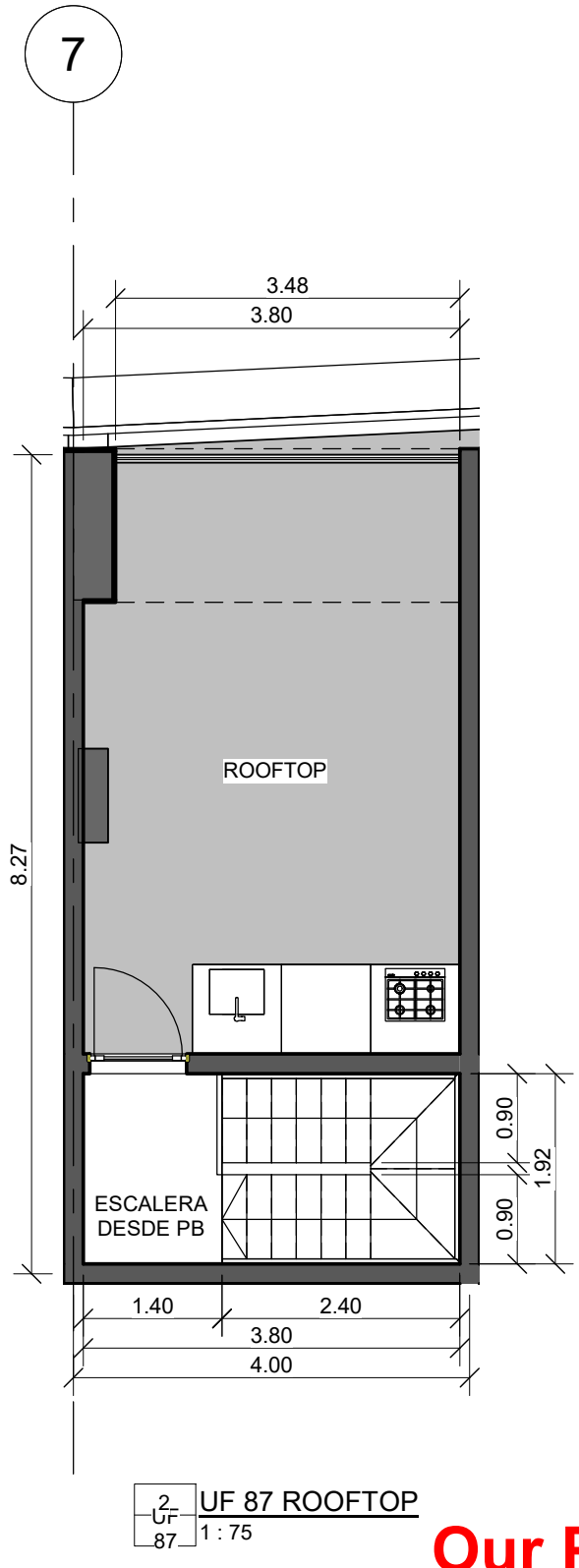
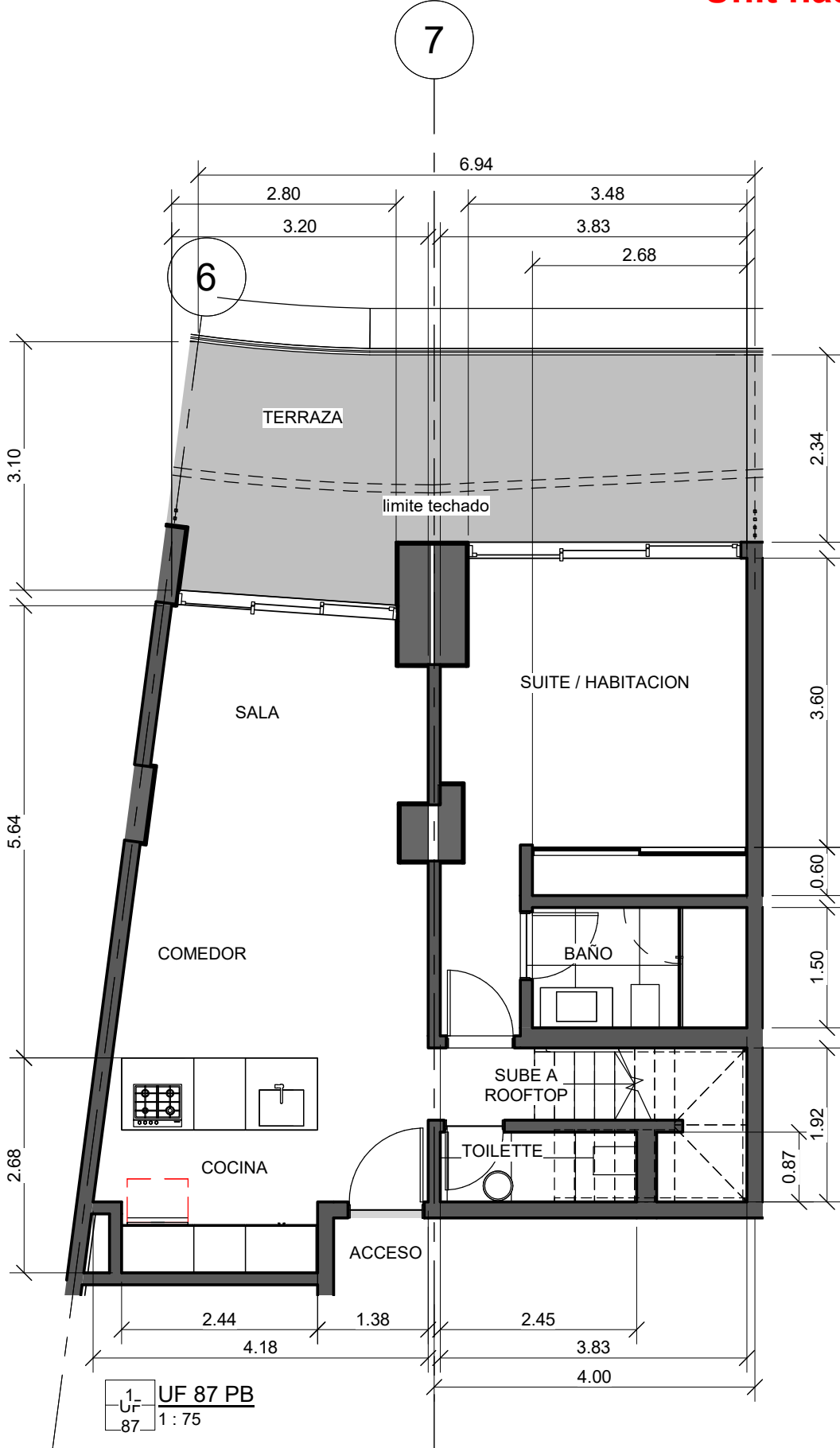
**Our Price: \$377,400  
Developer Price: \$424,020**

**Unit has 2 kitchens and Covered Rooftop Terrace  
Total Area 111 m2 - 1195 sq,ft**



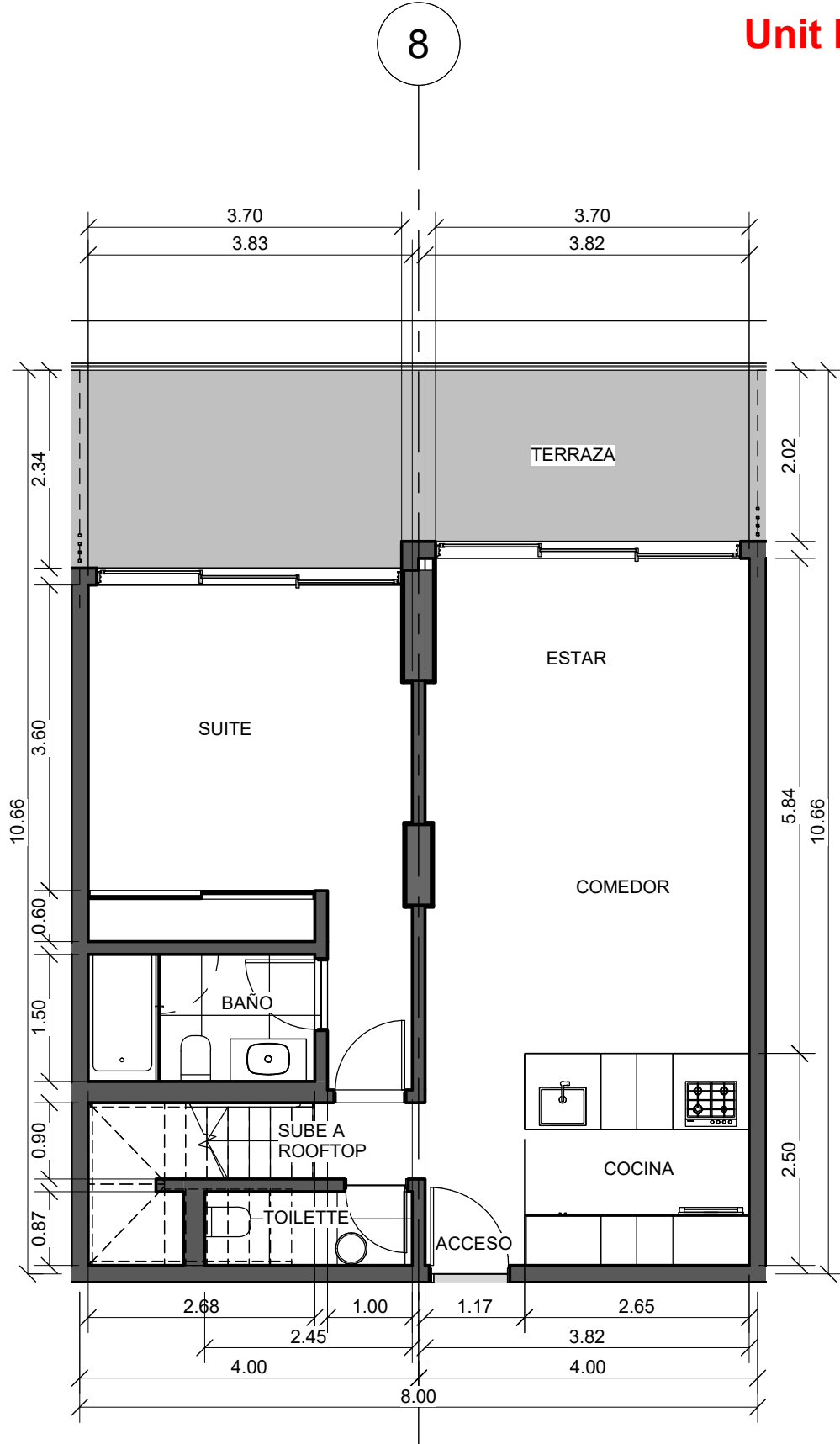
**Our Price: \$377,400  
Developer Price: \$424,020**

**Unit has 2 kitchens and Covered Rooftop Terrace  
Total Area 111 m2 - 1195 sq,ft**

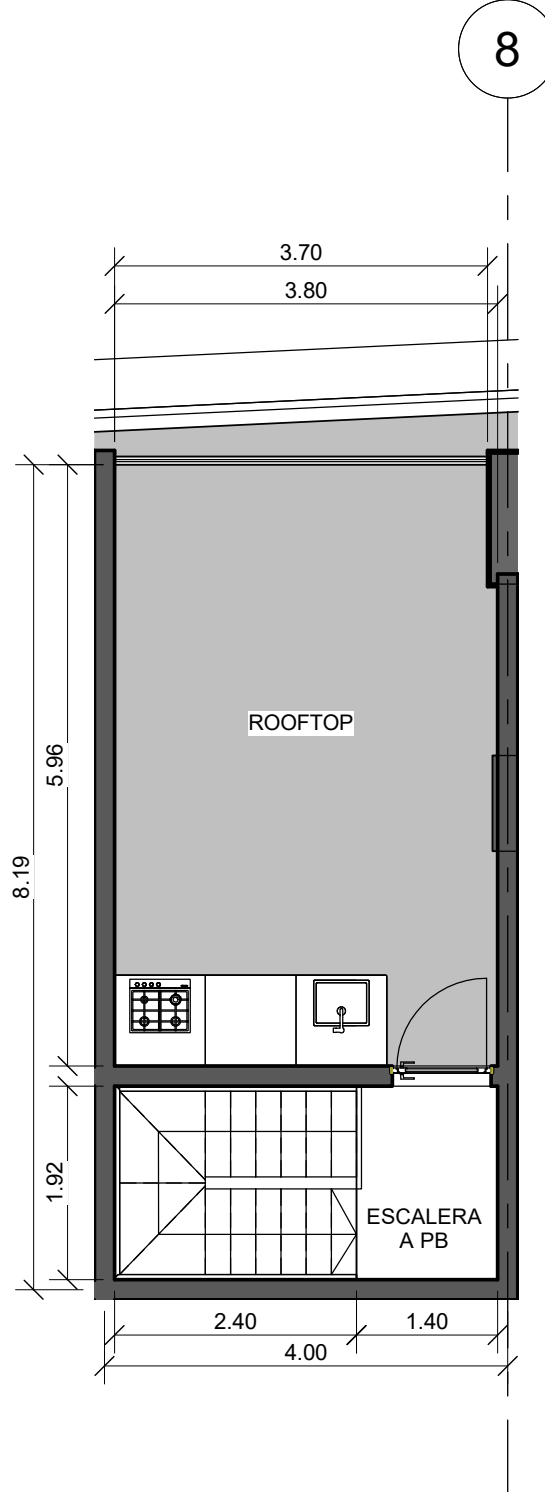


**Our Price: \$377,400  
Developer Price: \$424,020**

**Unit has 2 kitchens and Covered Rooftop Terrace  
Total Area 111 m2 - 1195 sq,ft**



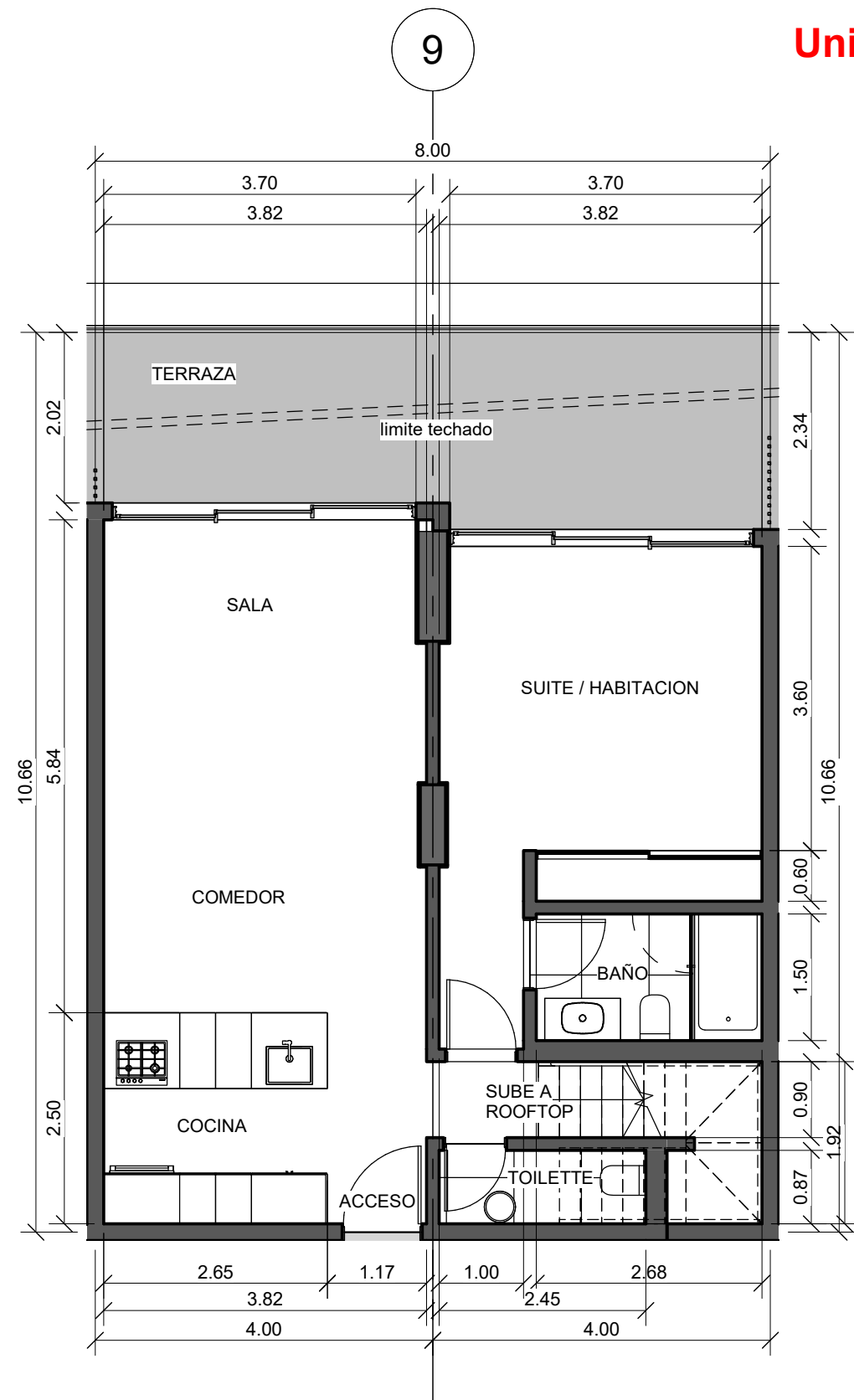
1 UF 88 PB  
1 : 75



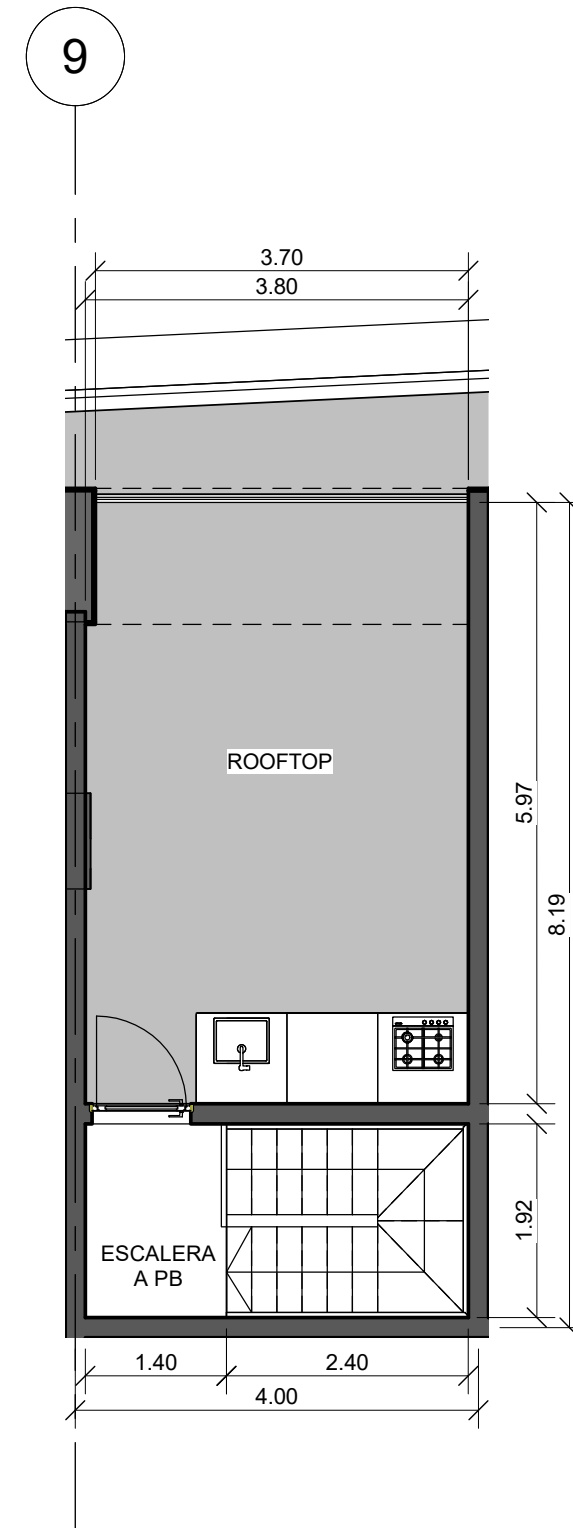
2 UF 88 ROOFTOP  
1 : 75

**Our Price: \$377,400  
Developer Price: \$424,020**

**Unit has 2 kitchens and Covered RoofTop Terrace  
Total Area 111 m2 - 1195 sq,ft**



1-UF 89 PB  
Ur 1:75



2-UF 89 ROOFTOP  
Ur 1:75

**Our Price: \$377,400  
Developer Price: \$424,020**