

A close-up photograph of a green palm frond, showing the intricate, radiating pattern of its leaflets. The frond is the central focus, with its vibrant green color and fine texture filling the frame. Overlaid on this natural background is the brand name 'MIRADA' in a large, bold, white sans-serif font. Below it, the words 'AMBARVILLAS' are written in a smaller, all-caps, white sans-serif font. The overall composition is clean and modern, emphasizing a natural and organic aesthetic.

MIRADA

AMBARVILLAS

FINISHES



Conceptual views and graphical representation of the project. The staging elements are for reference only.

MIRADA

AMBARVILLAS

Mirada Ambar is a residential duplex villa project with a contemporary design focused on the experience of living in comfortable and spacious spaces, meeting the needs of the modern family for a pleasant stay, whether in daily life or during vacations.



MIRADA

AMBAR

VILLA MURU





Exterior Finishes

1. Exterior Paint
2. Exposed Concrete
3. Glass Railings
4. Wooden Ceiling Finish
5. Garage Door - Wood Imitation Finish

Landscaping

- A. Exterior Planter

COLORS PALETTE

	RGB: 169-172-173
	RGB: 152-165-173
	RGB: 129-145-160
	RGB: 127-89-68





MIRADA

AMBAR

VILLA RUMI

Exterior Finishes

1. Exterior Paint
2. Wood Cladding on Walls
3. Glass Railings
4. Wooden Ceiling Finish
5. Stone-Clad Wall

COLORS PALETTE

	RGB: 33-43-55
	RGB: 159-173-186
	RGB: 103-83-76
	RGB: 113-93-86
	RGB: 36-26-27



RUMI







VILLA BALTIC

Exterior Finishes

1. Exposed Concrete
2. Garage Door - Wood Imitation Finish
3. Glass Railings
4. Wooden Ceiling Finish

COLORS PALETTE

	RGB: 179-186-192
	RGB: 85-53-38
	RGB: 171-184-190
	RGB: 45-49-60






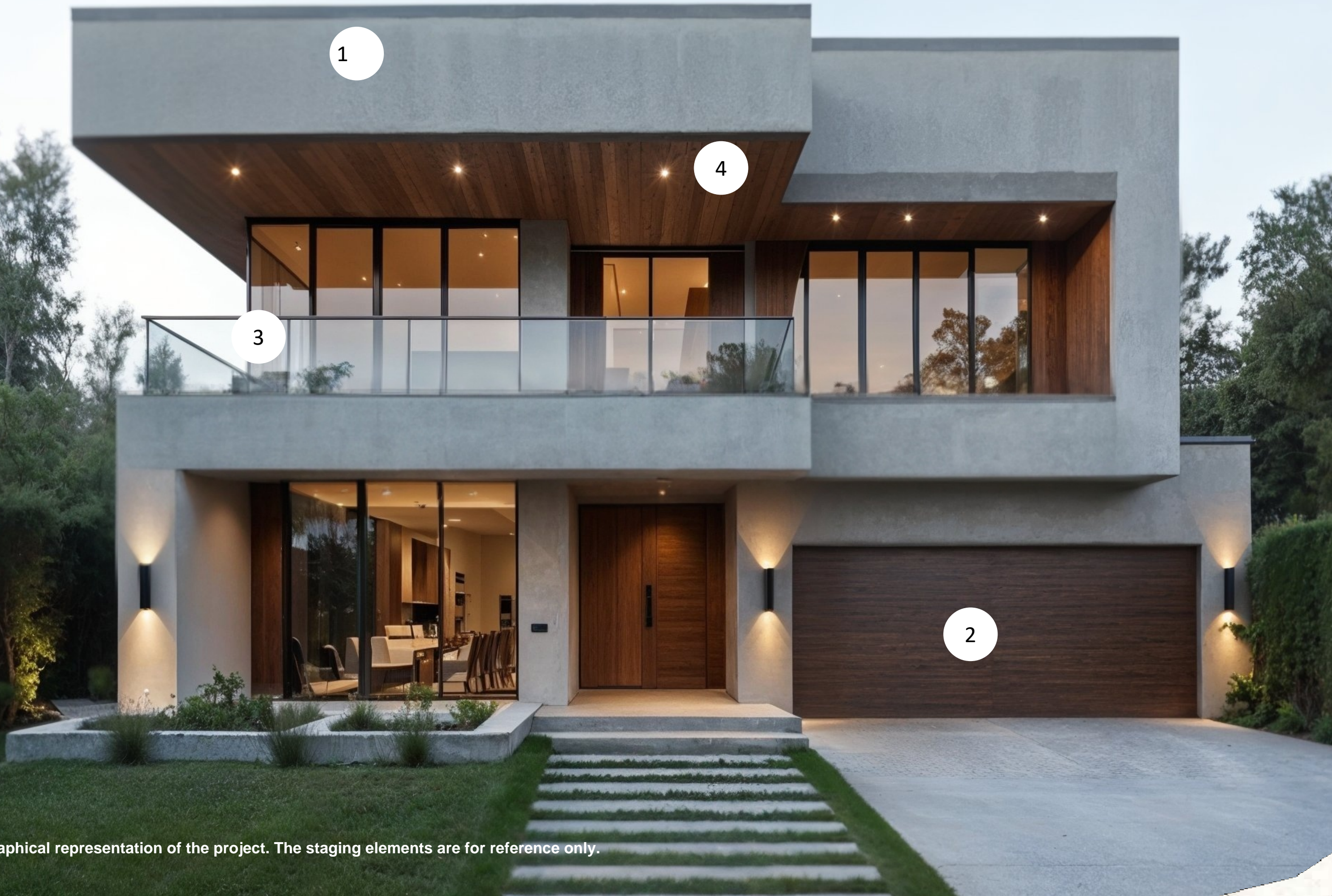
VILLA JANTAR

Exterior Finishes

1. Exposed Concrete
2. Garage Door with Wood-Look Finish
3. Glass Railings
4. Wood Cladding on Ceiling

COLORS PALETTE

	RGB: 143-156-164
	RGB: 102-119-135
	RGB: 81-49-32
	RGB: 59-51-49





MIRADA

AMBAR

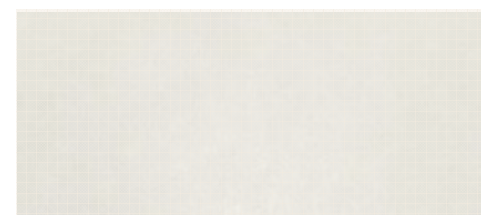
Landscaping Cocotal



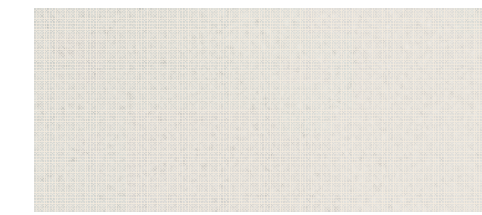
Conceptual views and graphical representation of the project. The staging elements are for reference only.



PORCELANATO NATURAL



TOPE PIEDRA NATURAL



VISTAS CONCEPTUALES Y REPRESENTACIÓN GRÁFICA DEL PROYECTO. LOS ELEMENTOS DE AMBIENTACIÓN SON DE REFERENCIA.

FLOORING

- The flooring finishes in the kitchen, living room, and bedrooms are designed with European porcelain tiles, imported in light and neutral tones that adapt to the warm and open spaces of the house.

- Non-slip flooring in bathrooms and natural stone in outdoor areas.

DOORS

- Main door made of imported Brazilian Oak.
- Interior doors made of imported veneered wood.

COUNTERTOPS

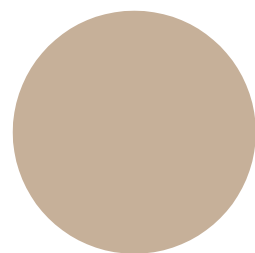
- Countertops made of high-resistance natural stone, large-format white Itaúnas granite.



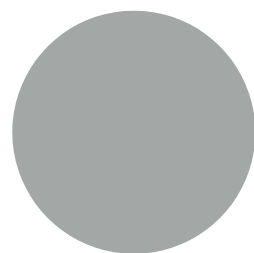
Conceptual views and graphical representation of the project. The staging elements are for reference only.

KITCHEN FURNITURE

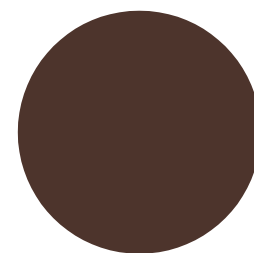
- Imported modular kitchens with high resistance to temperature changes, water, and pests.
- Cabinets equipped with high-quality hardware featuring soft-close technology.



RGB:
198-176-153



RGB:
163-168-166



RGB:
77-52-44

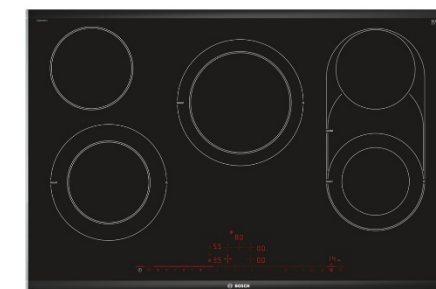
MODULAR KITCHEN COLOR OPTIONS



CABINET MOUNTED HOOD



BUILT-IN OVEN



CERAMIC COOKTOP



FRENCH DOOR REFRIGERATOR



MIRADA

AMBARVILLAS

- Spacious bedroom with high ceilings, perfectly oriented to the majestic views offered by the golf course.
- Divider wall covered with unique natural stones in light tones.
- A double walk-in closet with sliding doors and a design that maintains the correct humidity levels for clothing.

Conceptual views and graphical representation of the project. The staging elements are for reference only.



Conceptual views and graphical representation of the project. The staging elements are for reference only.

FAUCETS

- Equipped with stainless steel faucets and accessories of European origin.
- Imported modular furniture with high resistance to water, temperature changes, and pests.
- Modern sanitary fixtures.

- Sliding windows and doors.
- Black aluminum carpentry, manufactured with top-quality imported materials.



Conceptual views and graphical representation of the project. The staging elements are for reference only.



MIRADA

AMBARVILLAS

The recreation area is strategically located to offer extraordinary views of the golf course, providing an experience of freedom and spaciousness. The refreshing color of the pool water, combined with natural light and surrounded by the region's native vegetation, enhances the ambiance.

The pool features finishes of gray ceramic tiles, which are non-slip and highly resistant to aging, giving it a tropical style.

The background of the image is a close-up, high-angle shot of a palm frond. The frond is a vibrant green color and is composed of many long, narrow, parallel leaflets that radiate from a central point, creating a fan-like pattern. The lighting is bright, highlighting the texture and veins of the leaves.

MIRADA
AMBARVILLAS