

The project consists of six buildings:
LILY, LOTUS, ORCHID, CROCUS,
GARANCE, and TULIP.

- Two 1-bedroom apartments
- Twenty-five 2-bedroom apartments
- Two 2-bedroom penthouses, with a bathroom and kitchen on the second floor (optional)
- Sizes ranging from 92.25 m² to 162.59 m²
- Optimal designs with spacious living rooms, modern kitchens, laundry areas, and high-quality finishes
- Exclusive terraces with relaxation areas

4 BUILDINGS	2 floors
1 BUILDING	3 floors
1 BUILDING	4 floors + Elevator



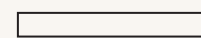


LILY

2 UNITS – 2 LEVELS

Sea views | 2 bedrooms | 2 bathrooms | Terrace



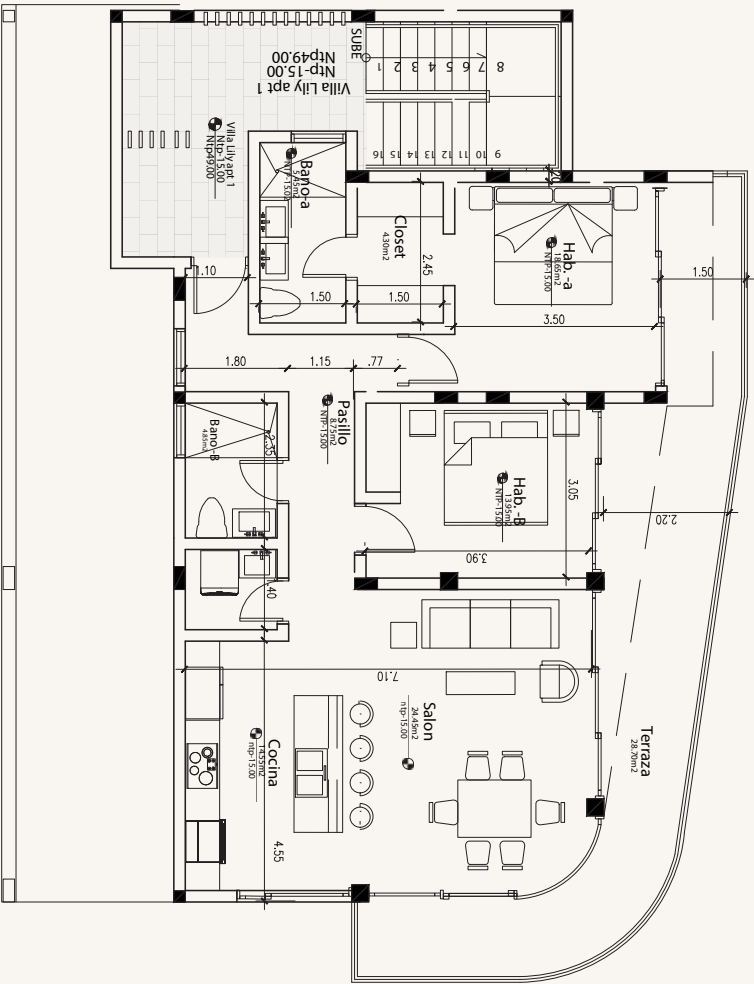


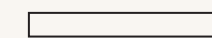
LILY APARTMENTS – 1st LEVEL

2 bedrooms | 2 bathrooms
98.7 m² interior | 28.70 m² terrace
127.4 m² total

Two-level building, 1 apartment per level
with sea and garden views.

- Living and dining room
- Kitchen
- Laundry room
- Master bedroom with bathroom and walk-in closet
- Secondary bedroom with shared bathroom
- Terrace
- Parking space
- High-quality finishes
- Kitchen with appliances included





LILY APARTMENTS – 2nd LEVEL

2 bedrooms | 2 bathrooms
98.7 m² interior | 36.10 m² terrace

Optional Jacuzzi 7.65 m²

~134.8 m² total

Two-level building, 1 apartment per level
with sea and garden views.

Living and dining room

Kitchen

Laundry room

Master bedroom with bathroom and walk-in closet

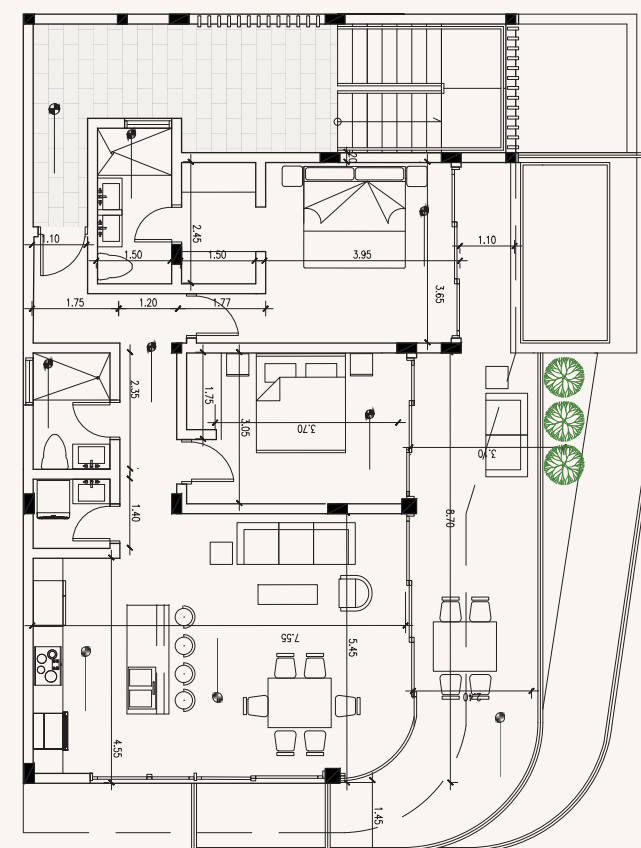
Secondary bedroom with shared bathroom

Terrace

Parking space

High-quality finishes

Kitchen with appliances included





LOTUS

6 UNITS – 2 LEVELS

Sea views | 2 bedrooms | 2 bathrooms | Terrace



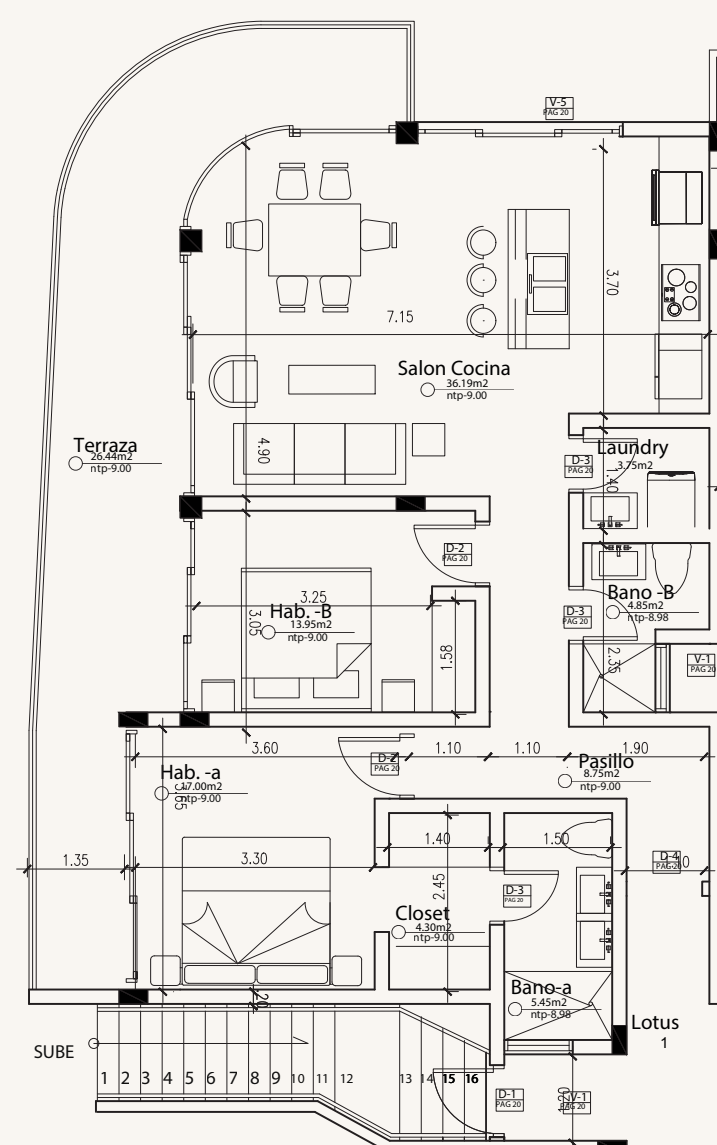


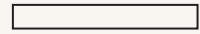
LOTUS APARTMENTS – LEFT SIDE

2 bedrooms | 2 bathrooms
94.24 m² interior | 26.44 m² terrace
120.68 m² total

Two-level building, 3 apartments per level
with sea and garden views.

- Living and dining room
- Kitchen
- Laundry room
- Master bedroom with bathroom and walk-in closet
- Secondary bedroom with shared bathroom
- Terrace
- Parking space
- High-quality finishes
- Kitchen with appliances included





2 bedrooms | 2 bathrooms
98.83 m² interior | 23.50 m² terrace
Optional Jacuzzi 5.80 m²
121.83 m² total

- Living and dining room**
- Kitchen**
- Laundry room**
- Master bedroom with bathroom and walk-in closet**
- Secondary bedroom with shared bathroom**
- Terrace**
- Parking space**
- High-quality finishes**
- Kitchen with appliances included**



LOTUS APARTMENTS – RIGHT SIDE

2 bedrooms | 2 bathrooms
94.24 m² interior | 26.44 m² terrace
120.68 m² total

Two-level building, 3 apartments per level
with sea and garden views.

Living and dining room

Kitchen

Laundry room

Master bedroom with bathroom and walk-in closet

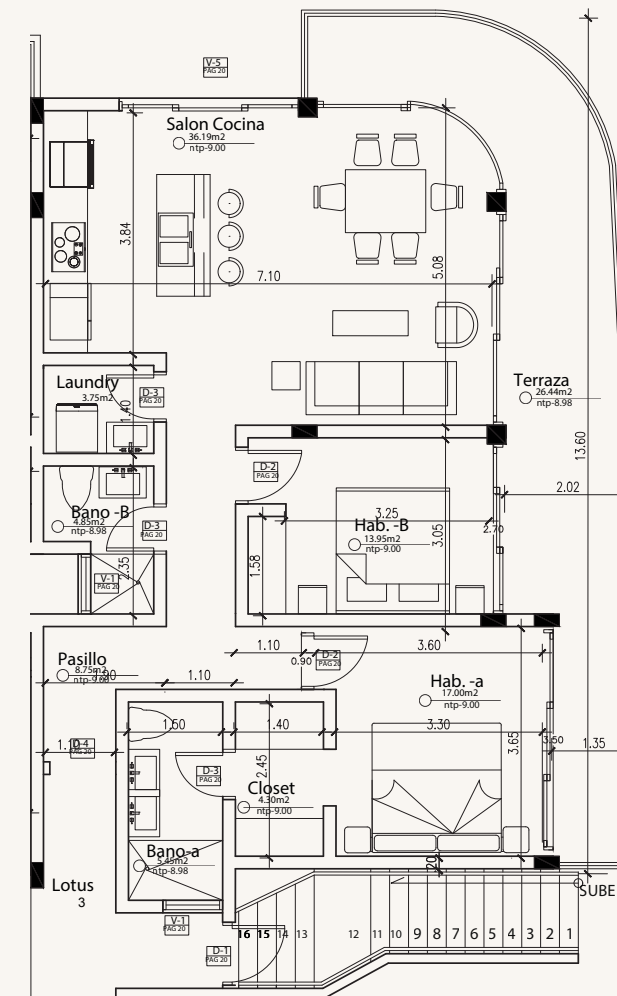
Secondary bedroom with shared bathroom

Terrace

Parking spaces

High-quality finishes

Kitchen with appliances included



ORCHID



6 UNITS – 2 LEVELS

Sea views | 2 bedrooms | 2 bathrooms | Terrace



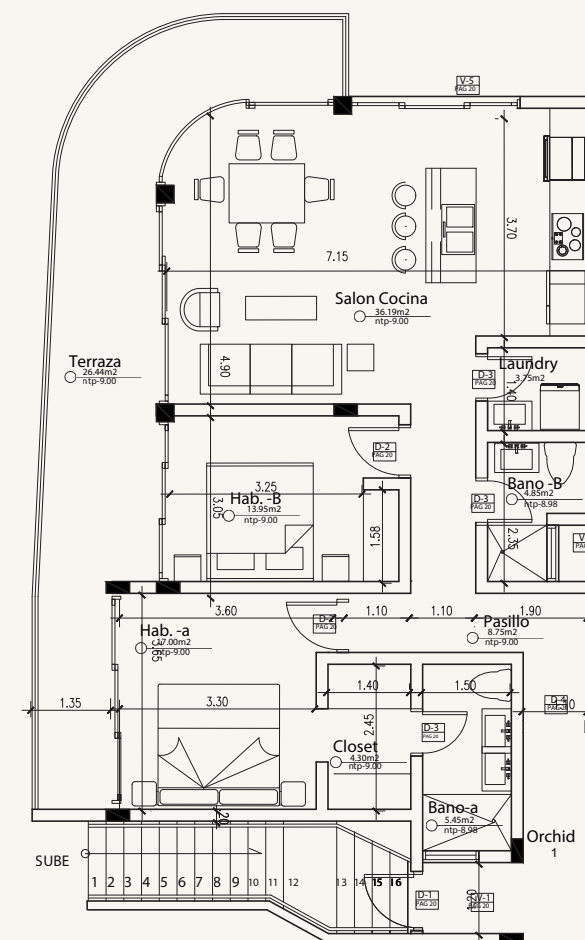


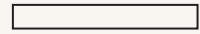
ORCHID APARTMENTS – LEFT SIDE

2 bedrooms | 2 bathrooms
94.24 m² interior | 26.44 m² terrace
120.68 m² total

Two-level building, 3 apartments per level
with sea and garden views.

- Living and dining room
- Kitchen
- Laundry room
- Master bedroom with bathroom and walk-in closet
- Secondary bedroom with shared bathroom
- Terrace
- Parking spaces
- High-quality finishes
- Kitchen with appliances included





2 bedrooms | 2 bathrooms
98.83 m² interior | 23.50 m² terrace
Optional Jacuzzi 5.80 m²
121.83 m² total

Two-level building, 3 apartments per level
with sea and garden views.

Kitchen

Master bedroom with bathroom and walk-in closet

Secondary bedroom with shared bathroom

Terrace

Parking spaces

High-quality finishes

Kitchen with appliances included



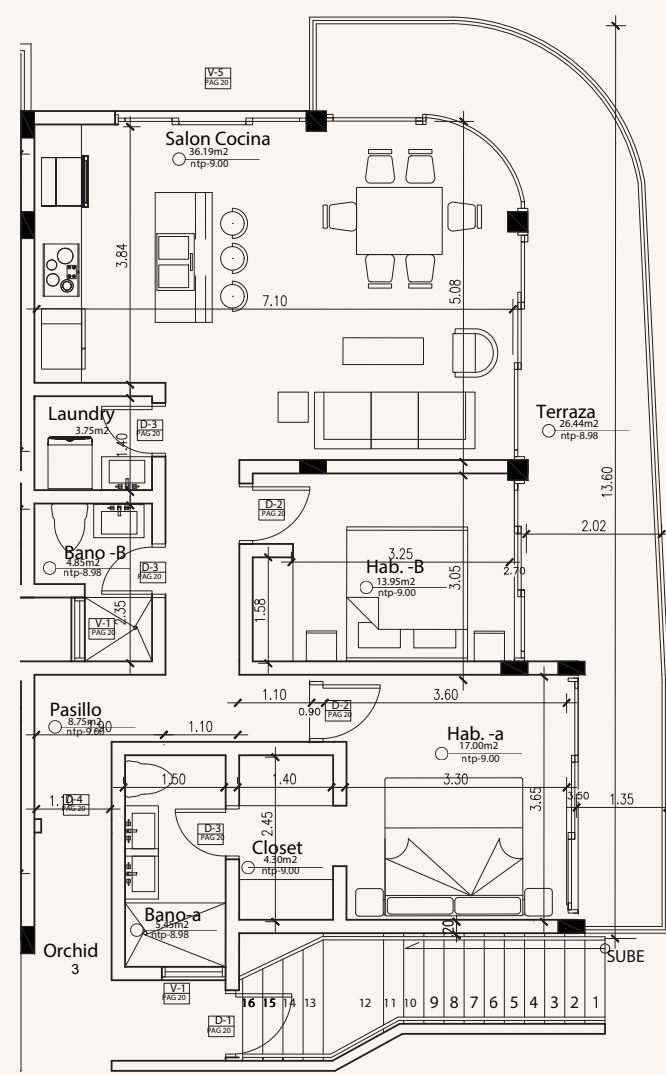


ORCHID APARTMENTS – RIGHT SIDE

- 2 bedrooms | 2 bathrooms
- 94.24 m² interior | 26.44 m² terrace
- 120.68 m² total

Two-level building, 3 apartments per level
with sea and garden views.

- Living and dining room
- Kitchen
- Laundry room
- Master bedroom with bathroom and walk-in closet
- Secondary bedroom with shared bathroom
- Terrace
- Parking spaces
- High-quality finishes
- Kitchen with appliances included



CROCUS



2 UNITS – 2 LEVELS

Sea and garden views | 2 bedrooms | 2 bathrooms | Terrace



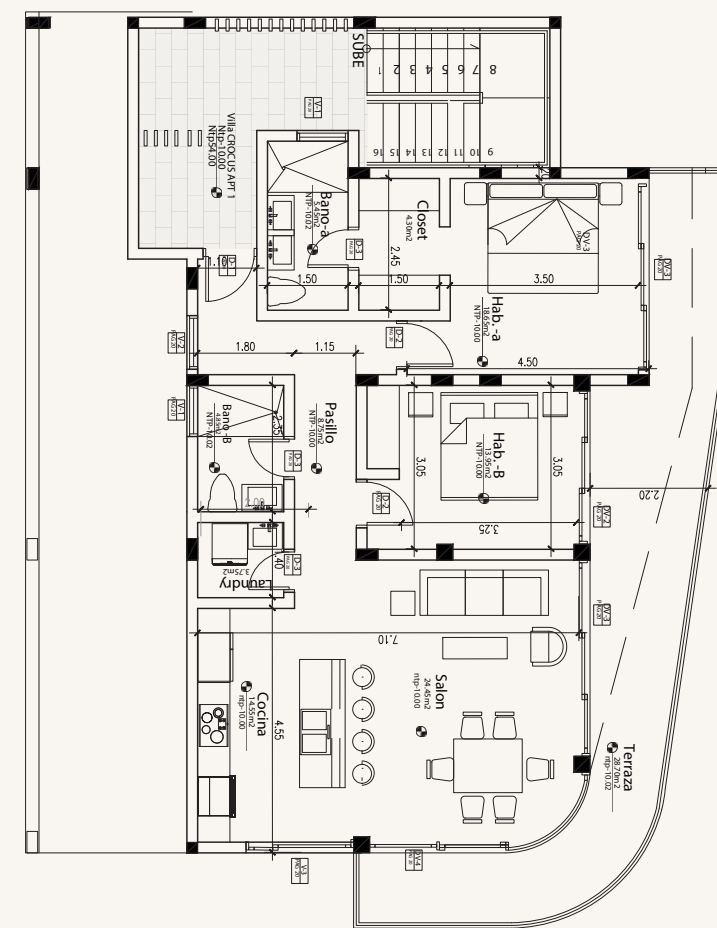


CROCUS APARTMENTS – 1st LEVEL

- 2 bedrooms | 2 bathrooms
- 98.70 m² interior | 28.70 m² terrace
- 127.4 m² total

Two-level building, 1 apartment per level
with sea and garden views.

- Living and dining room
- Kitchen
- Laundry room
- Master bedroom with bathroom and walk-in closet
- Secondary bedroom with shared bathroom
- Terrace
- Parking spaces
- High-quality finishes
- Kitchen with appliances included





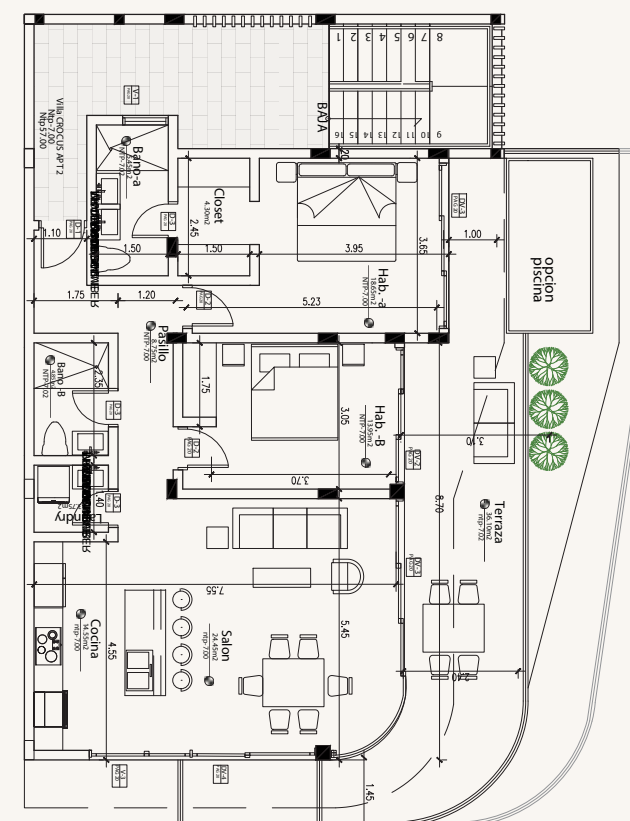
CROCUS APARTMENTS – 2nd LEVEL

- 2 bedrooms | 2 bathrooms
- 98.70 m² interior | 36.10 m² terrace
- Optional Jacuzzi 7.65 m²
- 134.8 m² total

Two-level building, 1 apartment per level
with sea and garden views.

- Living and dining room
- Kitchen
- Laundry room
- Master bedroom with bathroom and walk-in closet
- Secondary bedroom with shared bathroom
- Terrace
- Parking spaces
- High-quality finishes
- Kitchen with appliances included

-

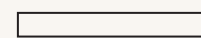


3 UNITS – 3 LEVELS

Sea and garden views | 2 bedrooms | 2 bathrooms | Terrace

GARANCE



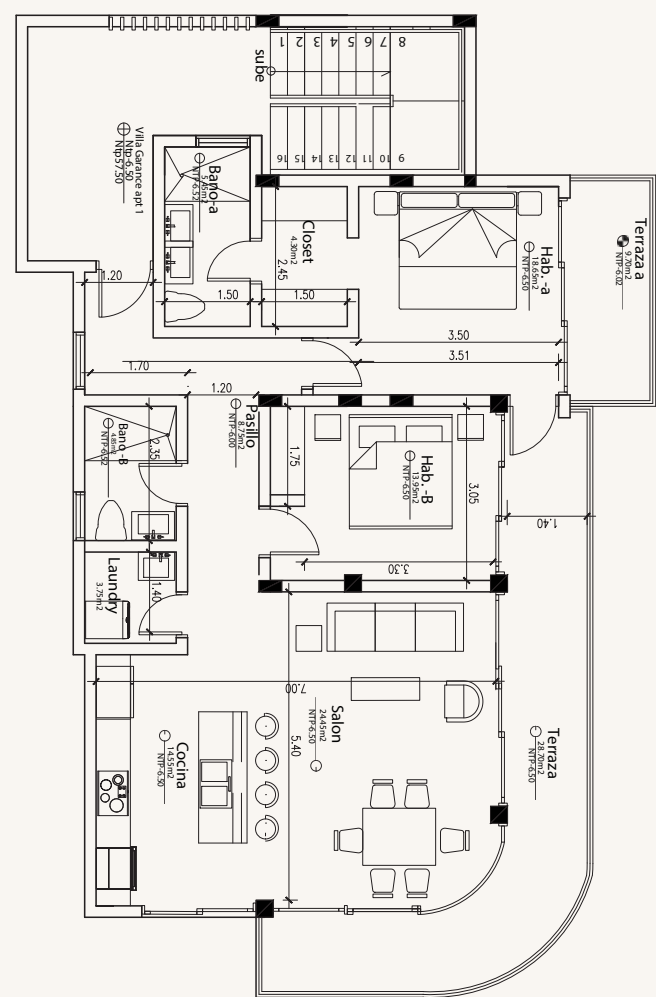


GARANCE APARTMENTS – 1st LEVEL

- 2 bedrooms | 2 bathrooms
- 98.70 m² interior | 28.70 m² terrace
- 127.4 m² total

Three-level building, 1 apartment per level
with sea and garden views.

- Living and dining room
- Kitchen
- Laundry room
- Master bedroom with bathroom and walk-in closet
- Secondary bedroom with shared bathroom
- Terrace
- Parking spaces
- High-quality finishes
- Kitchen with appliances included





GARANCE APARTMENTS – 2nd LEVEL

2 bedrooms | 2 bathrooms

98.70 m² interior | 36.10 m² terrace

134.8 m² total

Three-level building, 1 apartment per level
with sea and garden views.

Living and dining room

Kitchen

Laundry room

Master bedroom with bathroom and walk-in closet

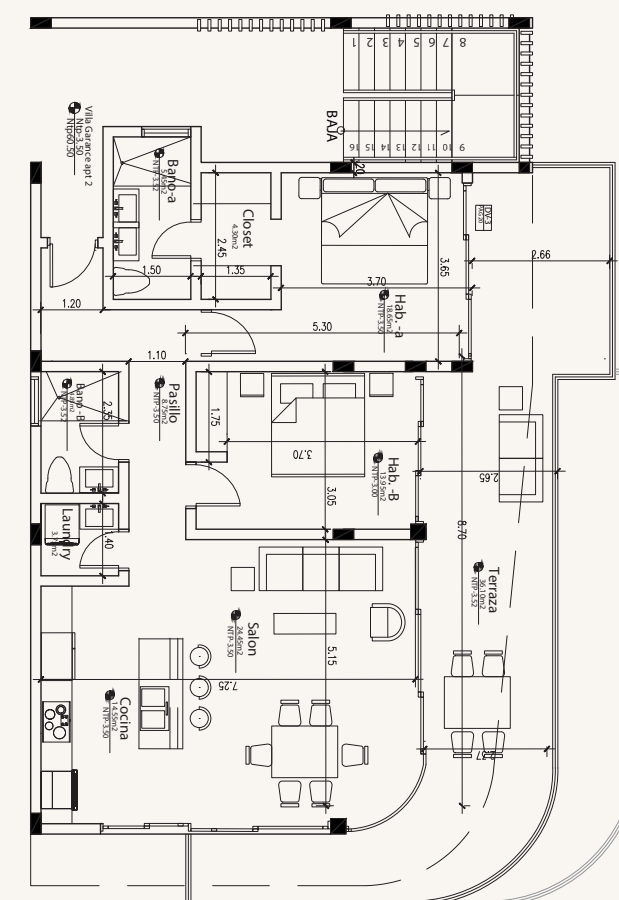
Secondary bedroom with shared bathroom

Terrace

Parking spaces

High-quality finishes

Kitchen with appliances included



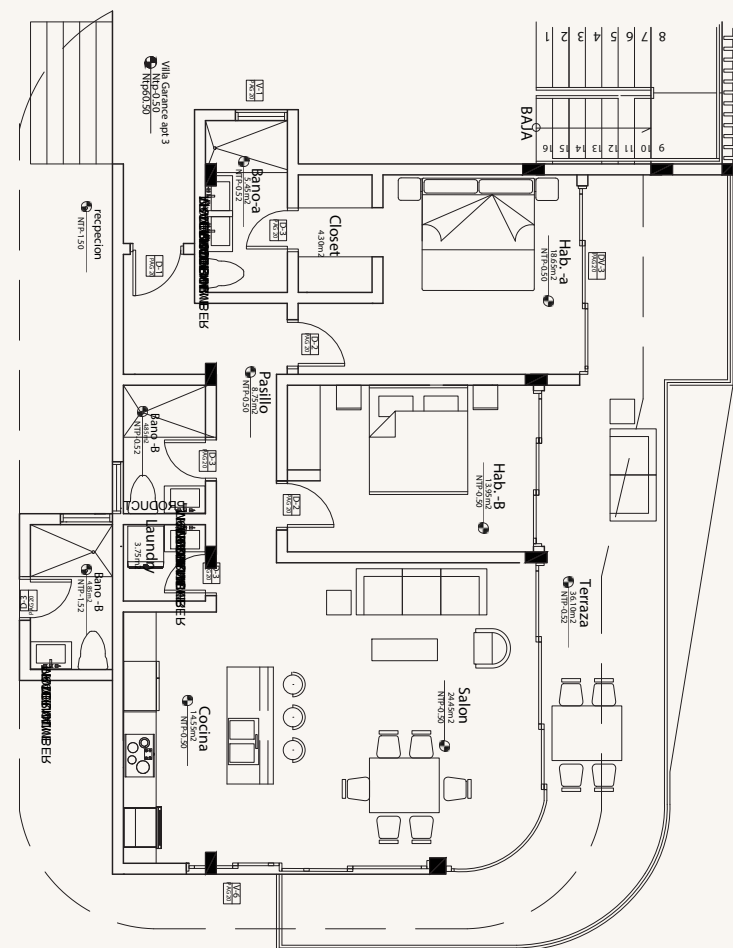


GARANCE APARTMENTS – 3rd LEVEL

2 bedrooms | 2 bathrooms
98.70 m² interior | 36.10 m² terrace
134.8 m² total

Three-level building, 1 apartment per level
with sea and garden views.

- Living and dining room
- Kitchen
- Laundry room
- Master bedroom with bathroom and walk-in closet
- Secondary bedroom with shared bathroom
- Terrace
- Parking spaces
- High-quality finishes
- Kitchen with appliances included



8 UNITS – 2 PENTHOUSES – 4 LEVELS

Sea View | 1 & 2 bedrooms | 1 & 2 bathrooms | Terrace



TULIP



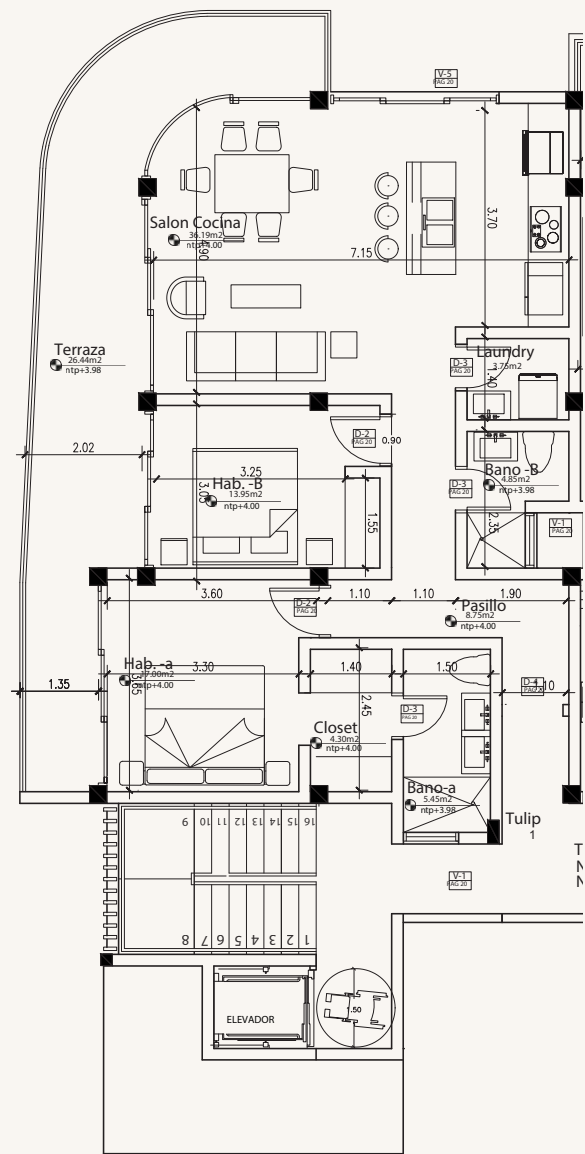
TULIP APARTMENTS LEFT SIDE

1st & 2nd LEVEL

2 bedrooms | 2 bathrooms
94.24 m² interior | 26.44 m² terrace
120.68 m² total

4-level building, 3 apartments on levels 1, 2, and 3; and
2 penthouses on level 4 with sea and garden views.

- Elevator
- Living and dining room
- Kitchen
- Laundry room
- Master bedroom with bathroom and walk-in closet
- Secondary bedroom with shared bathroom
- Terrace
- Parking space
- High-quality finishes
- Kitchen with appliances included





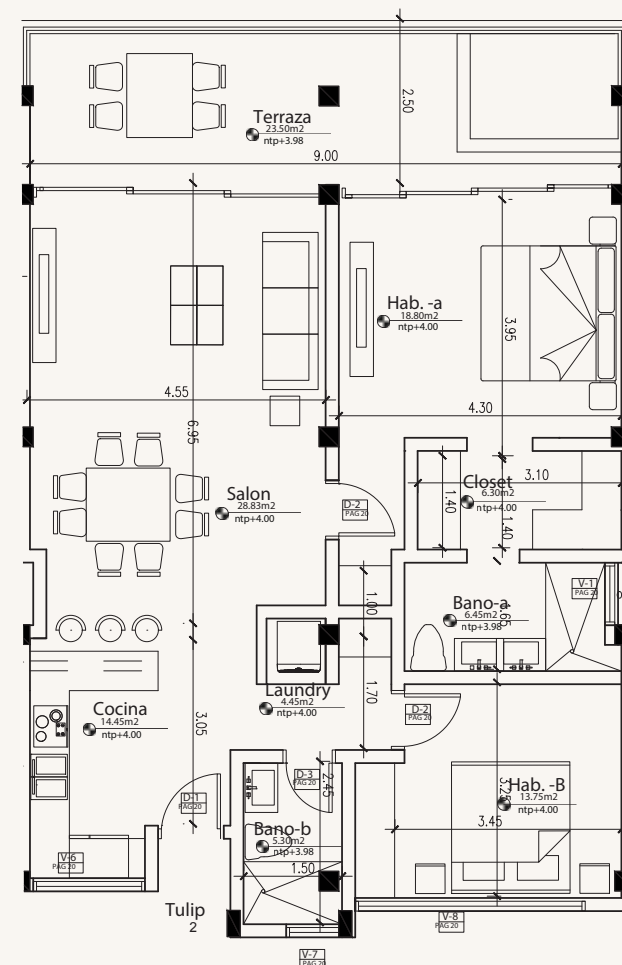
TULIP APARTMENTS – CENTER

1st & 2nd LEVEL

2 bedrooms | 2 bathrooms
98.83 m² interior | 23.50 m² terrace
Optional jacuzzi 5.80 m²
121.83 m² total

4-level building, 3 apartments on levels 1, 2, and 3; and
2 penthouses on level 4 with sea and garden views.

- Elevator
- Living and dining room
- Kitchen
- Laundry room
- Master bedroom with bathroom and walk-in closet
- Secondary bedroom with shared bathroom
- Terrace
- Parking space
- High-quality finishes
- Kitchen with appliances included





TULIP APARTMENTS – RIGHT SIDE

1st & 2nd LEVEL

2 bedrooms | 2 bathrooms
94.24 m² interior | 26.44 m² terrace
120.68 m² total

4-level building, 3 apartments on levels 1, 2, and 3; and
2 penthouses on level 4 with sea and garden views.

Elevator

Living and dining room

Kitchen

Laundry room

Master bedroom with bathroom and walk-in closet

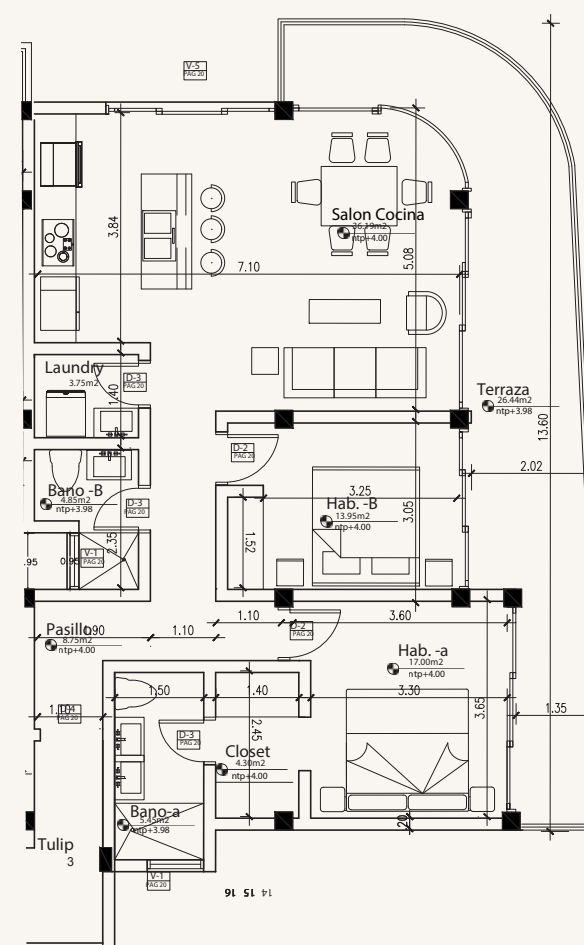
Secondary bedroom with shared bathroom

Terrace

Parking space

High-quality finishes

Kitchen with appliances included





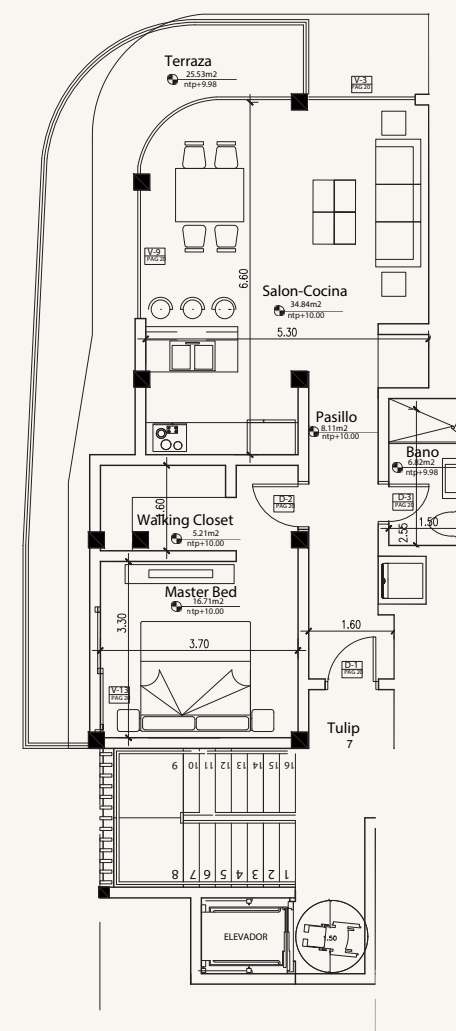
TULIP APARTMENTS – LEFT SIDE

3rd LEVEL

1 bedroom | 1 bathroom
71.69 m² interior | 25.53 m² terrace
97.22 m² total

4-level building, 3 apartments on levels 1, 2, and 3; and
2 penthouses on level 4 with sea and garden views.

- Elevator
- Living and dining room
- Kitchen
- Laundry room
- Master bedroom with bathroom and walk-in closet
- Secondary bedroom with shared bathroom
- Terrace
- Parking space
- High-quality finishes
- Kitchen with appliances included



01

TULIP APARTMENTS – RIGHT SIDE

3rd LEVEL

1 bedroom | 1 bathroom
71.69 m² interior | 25.53 m² terrace
97.22 m² total

4-level building, 3 apartments on levels 1, 2, and 3; and
2 penthouses on level 4 with sea and garden views.

Elevator

Living and dining room

Kitchen

Laundry room

Master bedroom with bathroom and walk-in closet

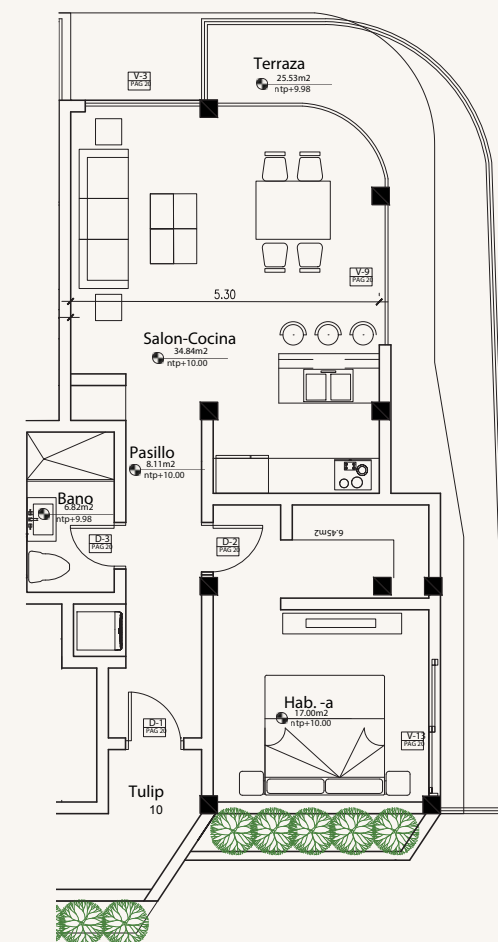
Secondary bedroom with shared bathroom

Terrace

Parking space

High-quality finishes

Kitchen with appliances included





TULIP APARTMENTS – PENTHOUSE

3rd & 4th LEVEL

- 2 bedrooms | 2 bathrooms | 162.89 m² total

1st floor:

75.76 m2 interior | 13.33 m2 terr | 89.90

m2 - 2nd floor: 73.8 m2

4-level building, 3 apartments on levels 1, 2, and 3;
and 2 penthouses on level 4 with sea and garden
views.

Elevator

Living and dining room

Kitchen

Laundry room

Master bedroom with bathroom and walk-in closet

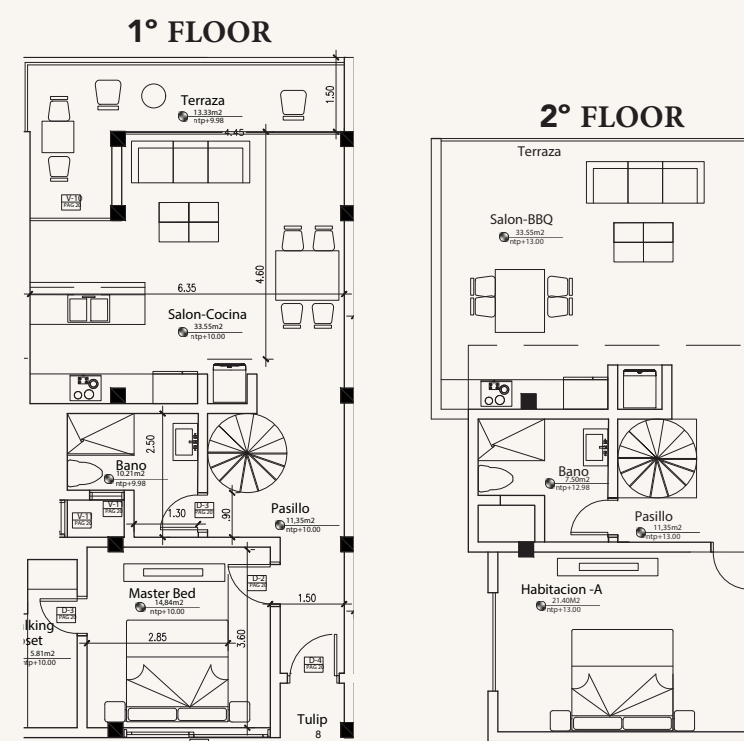
Secondary bedroom with shared bathroom

Terrace

Parking space

High-quality finishes

Kitchen with appliances included



1° FLOOR



2° FLOOR











High-quality finishes

- Tropical white paint for a fresh and airy feel
- Panoramic glass doors for unobstructed views
- Natural coral stone flooring
- Polished concrete design for a contemporary character
- Locally sourced black stones to integrate the architecture with the natural surroundings
- Decorative façades with MDF wood panels to add warmth and texture to the design

HIGH QUALITY WOOD



POLISHED
CONCRETE

NATURAL CORAL STONE
FOR FLOORING





THE AMENITIES

- Pool bar and lounge area*
- Fitness zone and yoga space*
- Children’s play area*
- Spacious parking*
- 24/7 security and video surveillance*
- Elevator in the Tulip building*
- Three swimming pools (including a children’s pool and a pool with a waterfall)*



SOCIAL AREA

VIEW



DEPOSIT STRUCTURE

Reservation - USD 5,000

20% - 5000\$ on signing

40% during construction

40% on closing

PROJECT DELIVERY – FEBRUARY 2027



PURCHASE PROCESS

Comprehensive legal advice throughout the entire process

Financing options and installment payments

Kitchen with appliances , bathroom installation
included in the sale price





Annabella Hill

Las Terrenas