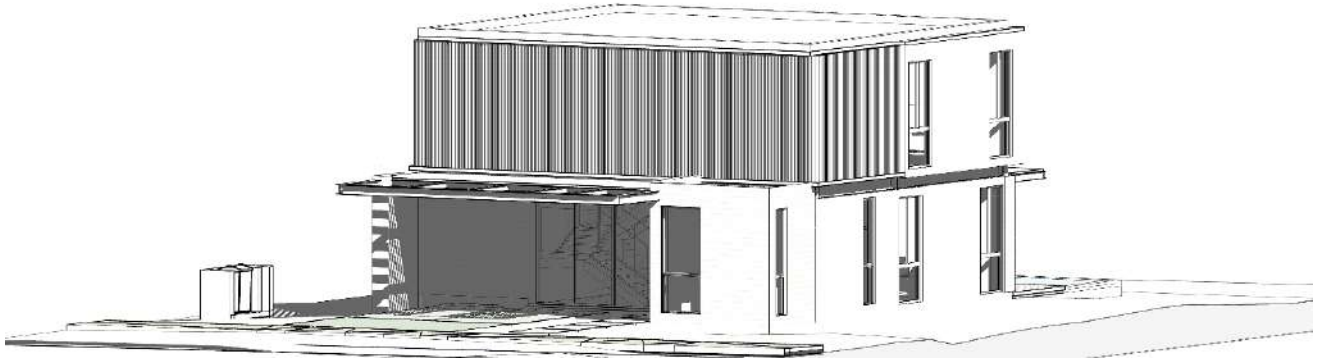


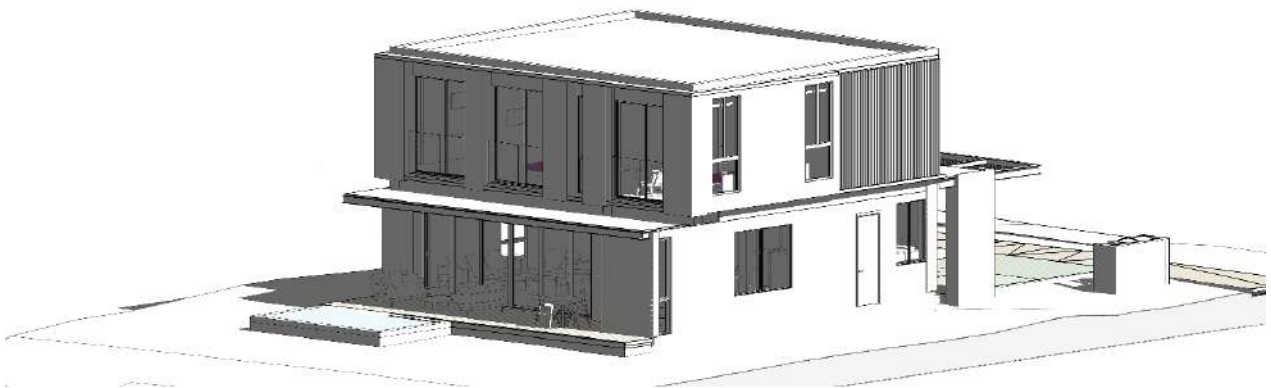
TYPE VILLA

The villa consists of two levels. Each level comprises 4 bedrooms, social areas, service areas, a terrace, a barbecue area, a swimming pool, and 2 parking spaces, totaling 316.95 m², of which 255.61 m² are interior, 22.60 m² is a covered terrace, and 38.74 m² is a carport.

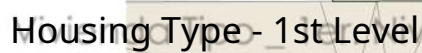


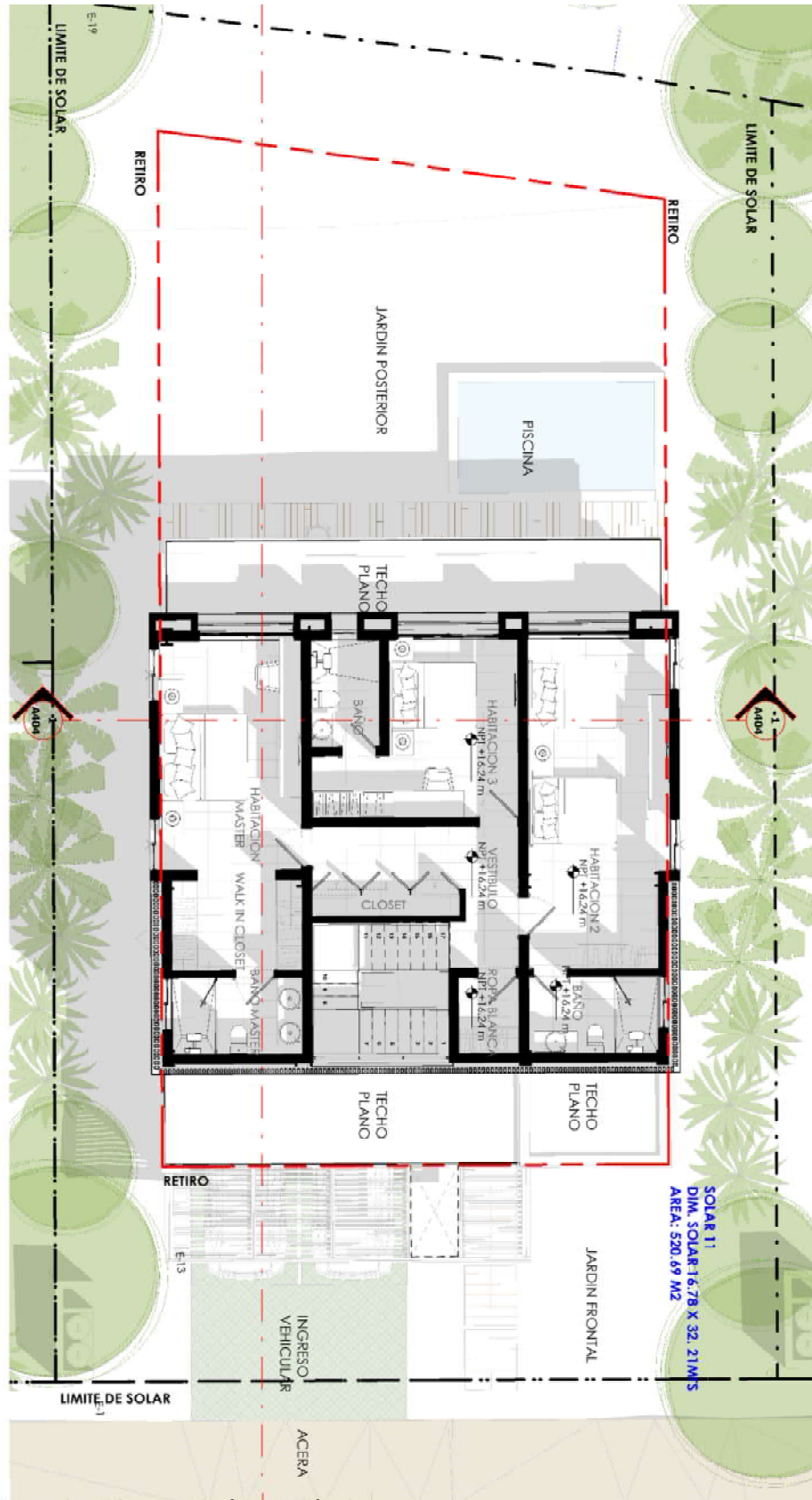
Typical Villa View from Boulevard Green Village.

The Typical Housing It consists of two levels: Level 1 includes the entrance, which provides access through a small vestibule and the staircase to the second level, a guest room with a bathroom and closet, and the social areas of the house: living room, dining room, integrated cold kitchen, and access to the terrace and pool areas. Opposite the pool are the service areas: laundry room, hot kitchen, utility room with bathroom, and carport. The second level comprises a vestibule and closet, two secondary bedrooms with their respective bathrooms, closets, and balconies; and finally, the master bedroom, which has a balcony and is accessed from the opposite side. walk in closet and master bathroom. **Total Area: 316.95 m²**

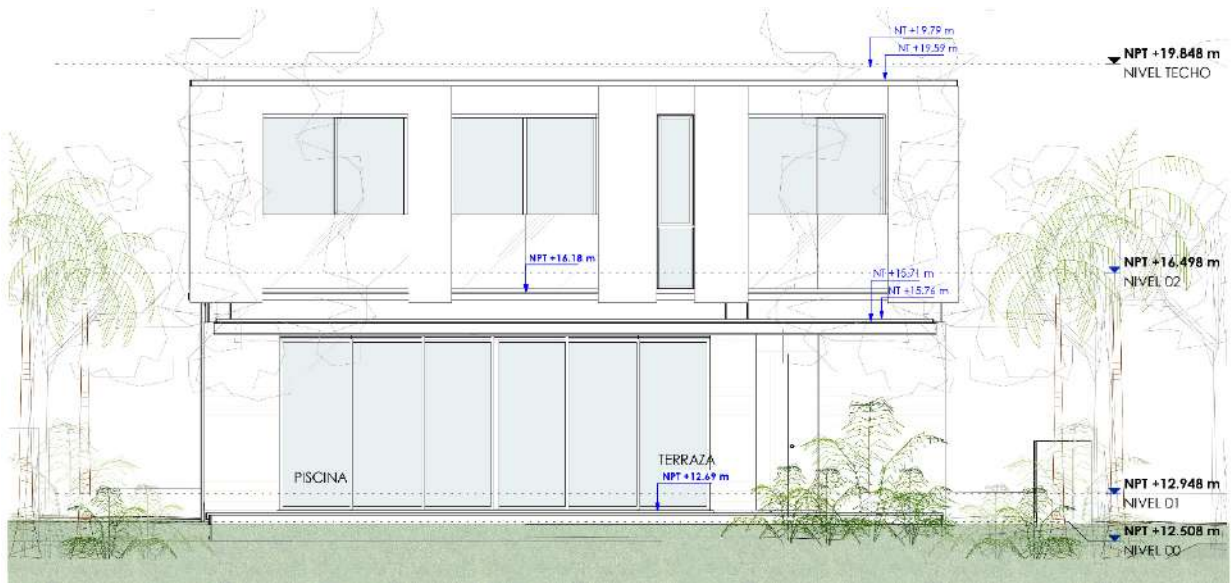


Typical Villa, View from the Patio.

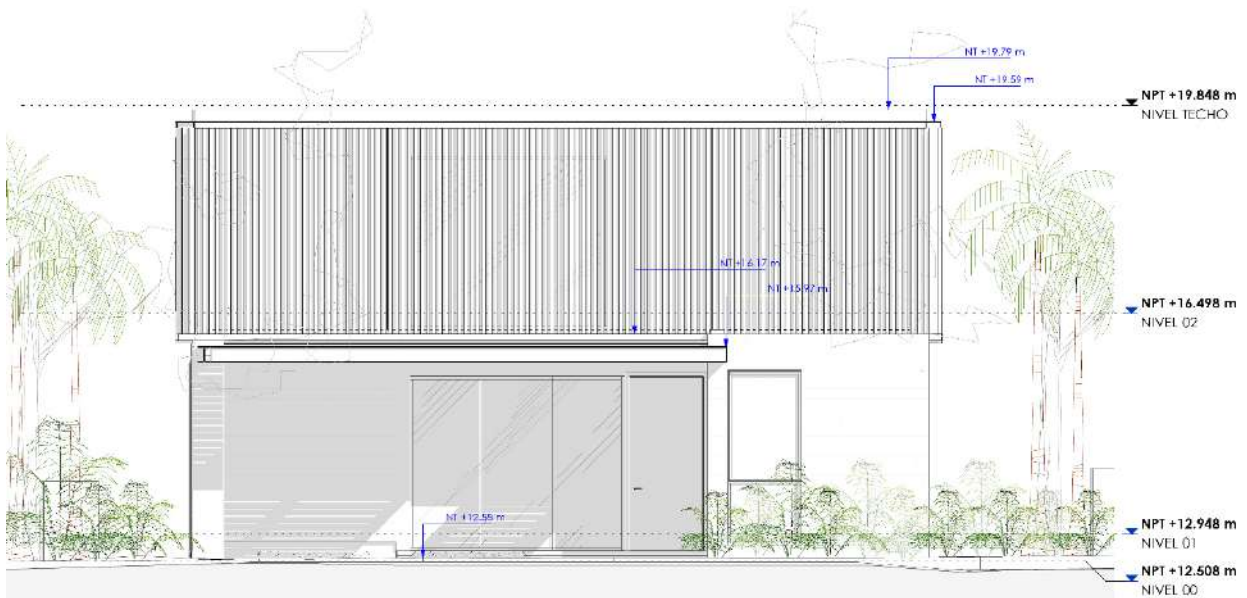




Housing Type_ 2nd Level



Rear Facade



Front Facade