



MINA
CAP CANA

Developed by:
REACH+CO



The Mina, Cap Cana

Thirty residences in quiet balance. Days open to breeze and garden. Evenings to water and sky.

Developed by:
Reach+co

Designed by:
Atelier Reach Architects

Residences: 30

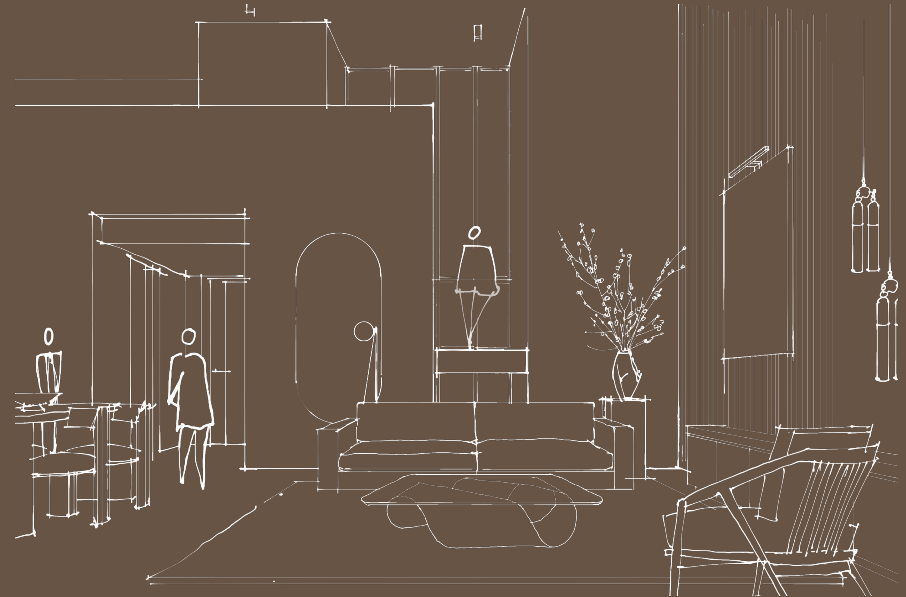
Typologies: 1–2 BR + Penthouses & Rooftop Terraces

Location: Las Iguanas Golf, Cap Cana

Amenities: Rooftop Pool and Jacuzzi's, Rooftop Lounges, Fitness Rooms, Gardens, Clubhouse, Concierge, Putting Greens, Outdoor Cooking Facilities, Coworking Spaces, Indoor and Outdoor Wellness Spaces, Pet Relief Areas, Trash Chutes, Catering and Event Space.

Construction Starts: Q3 2026

Delivery: Q4 2028





01

Design





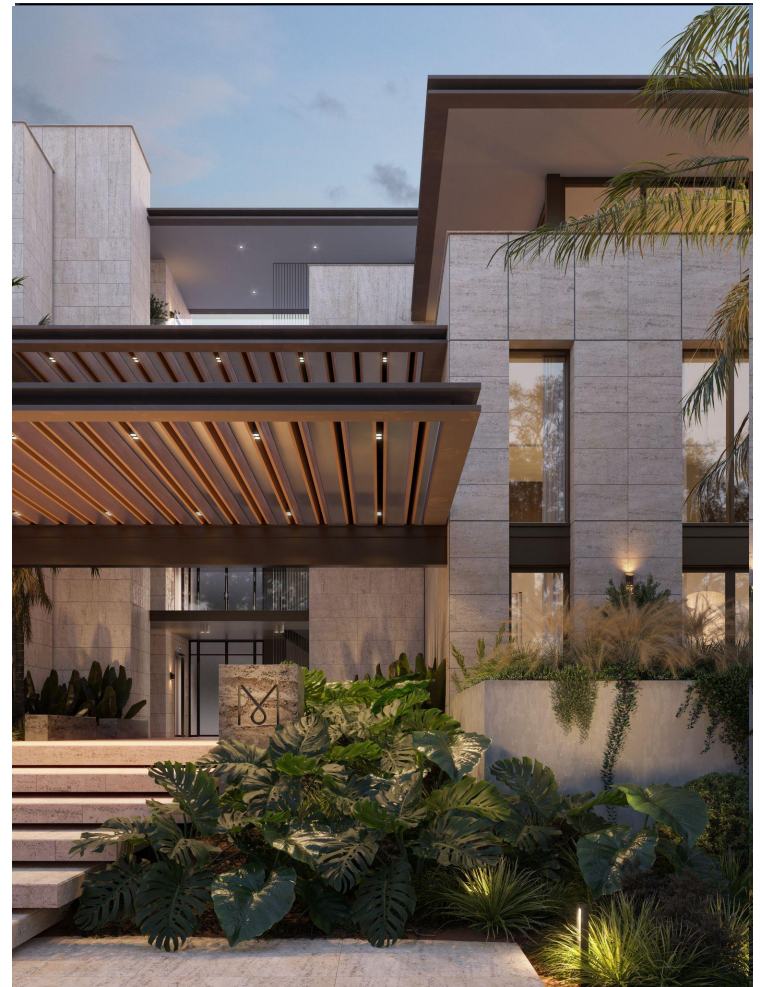
Artist representation building's west facade



A Composed Facade & Arrival

Mina, Cap Cana expresses a calm, crafted architecture—stone massing, deep overhangs, and warm soffits—that frames the landscape as much as the building. Broad rooflines shade glass and terraces, while the entry canopy creates a generous moment of arrival. The proportions are quiet and deliberate, giving the facade a measured rhythm that feels confident yet welcoming.

Lush, native planting softens every edge. Palms and layered understory gardens rise along the plinth and spill over planters, drawing the eye from the stepped entry to private terraces above. In the evening, concealed lighting grazes stone and foliage, extending the sense of home outdoors. Together, architecture and landscape create a single composition—refined, green, and livable—where residents step out of the car and immediately feel they've arrived somewhere serene and enduring.





Architecture –
Atelier Reach Architects

“Mina emerges from collaboration—an architecture sculpted by many hands and a single intention: to create serenity through design.

Every decision, from material to proportion, is a reflection of our team’s dedication to craft and connection with the landscape of Cap Cana”



Boutique Scale

For us, boutique scale means designing for people, not crowds: a limited number of residences, intimate proportions, and short, intuitive paths from car to home. Circulation is human—no cavernous lobbies or long hotel corridors—so every arrival feels private, unhurried, and easy to use. Fewer neighbors and a low resident-to-amenity ratio translate into quieter spaces, more attention from staff, and a building that lives like a home with the service of a resort.

Arrival at Mina is a quiet reveal: a palm-lined approach, limestone steps, and a floating timber canopy leading into a light-washed lobby—close to everything, serenely apart. From the shaded entry, the lobby opens to the air, framed by sculpted stone and native planting. Beyond it, amenities unfold in a gentle sequence—co-working lounge, owners' clubhouse, fully equipped gym, pool terraces and outdoor living spaces—each set to capture light, breeze, and the scent of the ocean.





Artist representation of North entry into building



Lobby, Concierge and Valet

Mina's operations are managed with the precision and warmth of a boutique hotel. A dedicated on-site manager oversees daily operations—ensuring that every detail, from valet and maintenance to guest arrivals, runs seamlessly. Residents enjoy access to tailored services such as concierge assistance, catering coordination, housekeeping, and pre-arrival preparation.

It's a building designed to live effortlessly—where comfort is anticipated, and every experience feels quietly orchestrated.



Thoughtful Interiors

Everyday rituals lead the design: kitchens that open to gardens, shaded terraces for long lunches, and living rooms that blur indoors and out. Stone, timber, and soft textures warm each room, while native planting frames privacy—creating effortless comfort and a calm sense of home.

Each apartment at Mina has been designed for effortless living. Every detail, from the soft-close cabinetry to carefully chosen fixtures, reflects a commitment to quality and ease. Kitchens come equipped with appliances that blend seamlessly into the architecture, offering a refined backdrop for everyday cooking or shared meals with friends. Integrated air conditioning ensures a comfortable environment, while generous storage and thoughtful lighting enhance functionality.

The result is a home that feels composed and inviting—spaces that support daily routines with quiet luxury and timeless design. Whether preparing a quick breakfast or hosting an evening gathering, every apartment is ready to accommodate life beautifully.

Artist representation unit B1 Terrace





Artist representation of unit B1's Kitchen



Reach & Co™ x Mina, Cap Cana | October Update

Parking

There are a total of 3 parking spots per residence, located in a secure underground parking garage. Each unit includes 2 parking spots, additional are available upon request.

Terraces

Every residence includes an outdoor terrace with at least 2M of usable depth for comfortable outdoor living. Penthouse units offer private rooftop access via a dedicated internal staircase.

In-unit Pools & Jacuzzis

Ground-floor residences offer secluded terraces complete with personal jacuzzis. Penthouse homes feature private pools for an elevated, exclusive outdoor experience.

Entry & Balcony Doors

Residences feature generous 1 m-wide entry doors and premium exterior sliding doors finished with high-quality materials for smooth, quiet operation

Bathroom Features

All bathrooms feature high-end finishes and premium materials, with every shower offering a minimum size of 90 cm x 1.55 m for added comfort. Select penthouse residences also include bathtubs for an elevated, spa-like experience.

Tall Ceilings & Lofted Living

All residences feature a minimum 3M ceiling height in the living, kitchen, and dining areas. Select loft units offer double-height spaces with full-height glazing for abundant natural light.

Storage Units

Optional storage rooms on the parking level provide secure, solid-walled spaces equipped with lighting and power.

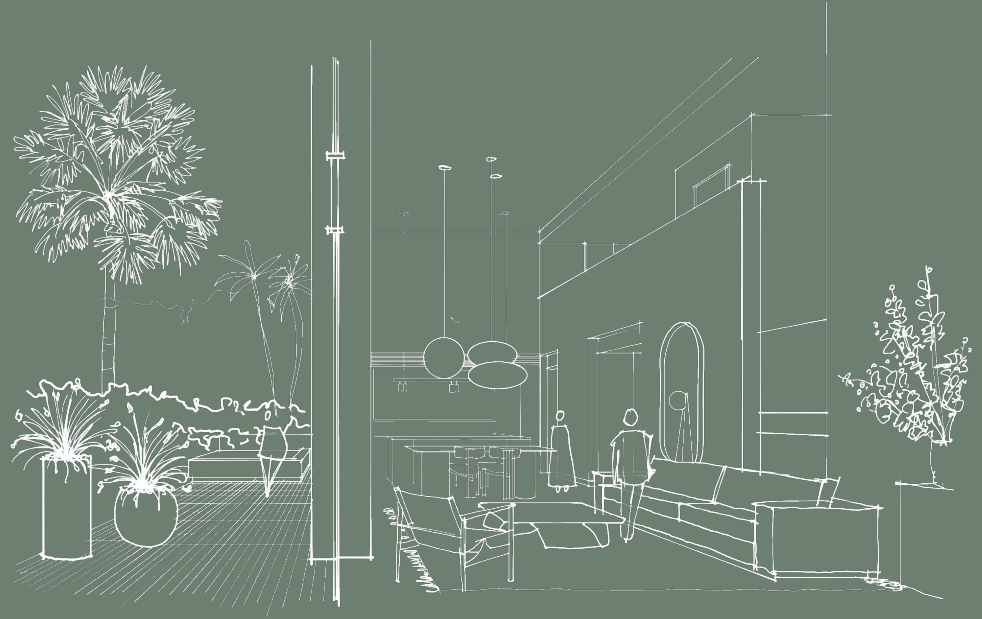


An Exclusive Dialogue Between Inside and Out

At The Mina Collection, boundaries dissolve: generous sliders open to terraces and private gardens, deep overhangs temper the sun, and native planting brings shade and privacy. Each of the thirty residences becomes a secluded retreat where cross-breezes, filtered light, and outdoor rooms extend daily life—balancing intimacy and openness in constant conversation with the Caribbean landscape.

"In Punta Cana and Cap Cana, we design for an open-door way of living—moving easily from kitchen to terrace, letting breeze and shade do the work. Home should feel barefoot, effortless, and connected to the garden."

Miranda Middleton, Director
Atelier Reach Architects



Artist representation of unit A1 Loft Dining and Kitchen



Artist representation of unit B1's Living Room



A Contemporary Landmark in Cap Cana

The Mina Collection presents architecture that is both bold and refined—clean lines, deep overhangs, expansive glazing, and natural stone anchored by lush tropical planting. The arrival sequence is choreographed for calm: an elevated approach, a floating canopy, and a lobby washed with light. Together, these elements create a quiet sanctuary that feels unmistakably contemporary yet rooted in Cap Cana.

Lofted Living, Redefined

Soaring double-height rooms and full-height glass invite light, air, and long views, while carefully scaled mezzanines and balustrades keep the spaces composed. Cross-ventilation, layered shades, and acoustic finishes make lofty volumes comfortable day to night. The result: open homes that live effortlessly—dramatic in proportion, refined in detail.

Artist representation of unit A1 Loft Dining and Kitchen





Artist representation of unit A1 Loft Living Room



Semi Olympic Rooftop Pool

Mina's semi-Olympic rooftop pool—25 m long, 1.35 m deep—crowns the building with wide views of the ocean and surrounding fairways. A putting green, quiet lounges, sun-tanning beds, and outdoor cooking stations complete a private, club-style setting above it all.



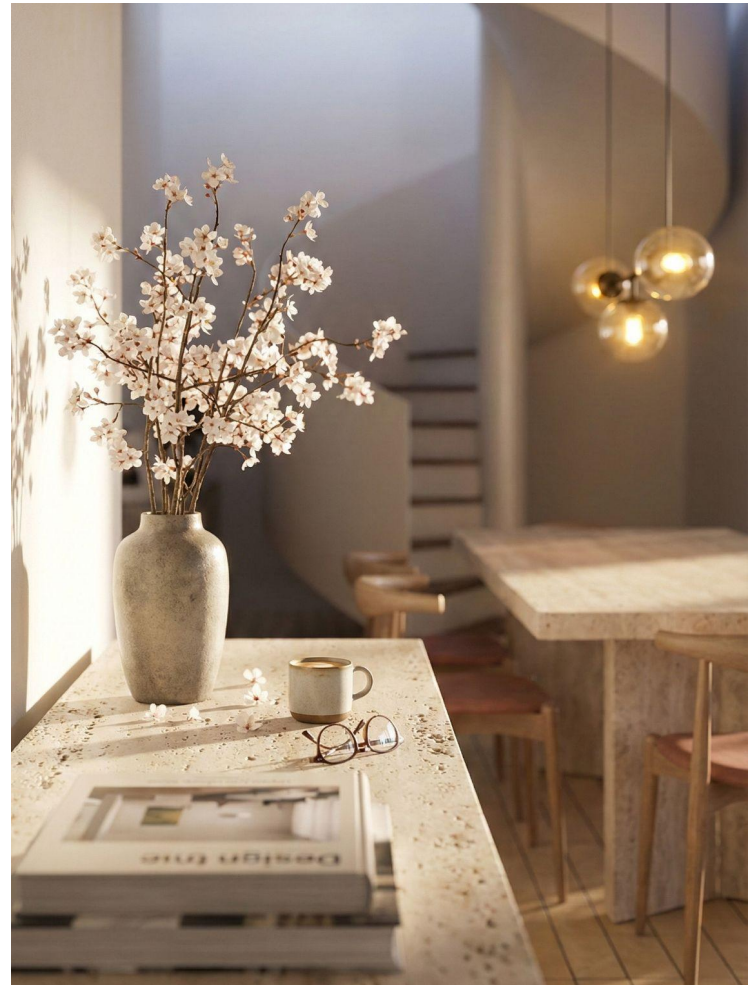


Composed, Discreetly Delivered

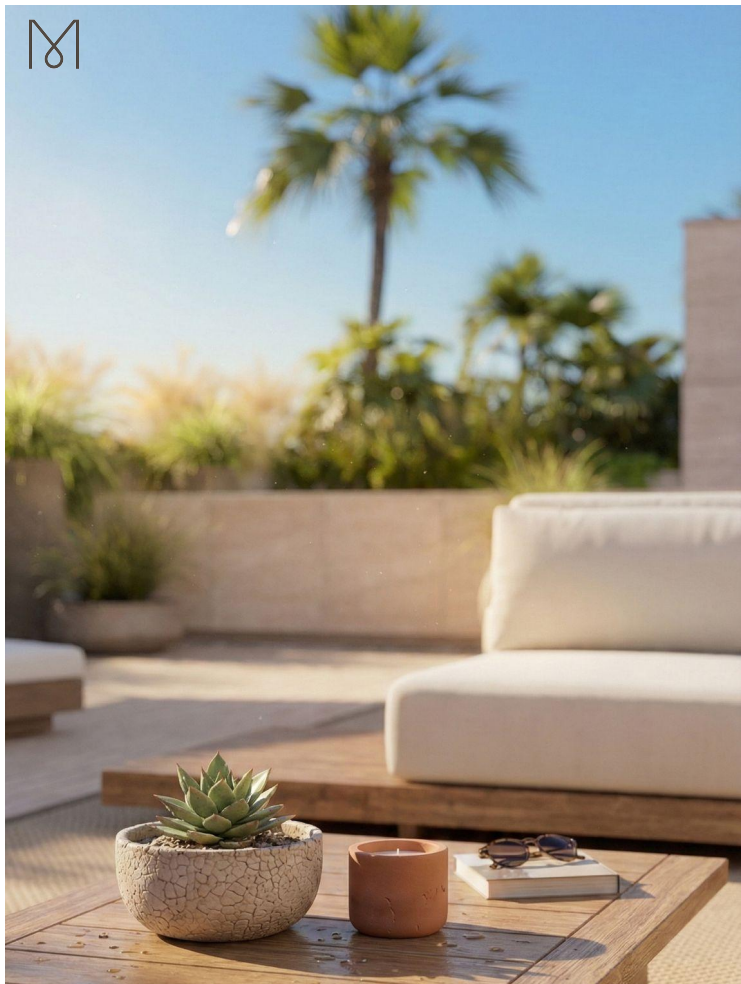
Some places ask for attention. Others simply hold it.

This is a project built on atmosphere—light, shadow, texture, and time. The experience is immediate but unforced, leaving space for interpretation rather than explanation.

What matters here is not the moment, but the feeling that lingers.







Service, Discreetly Delivered

Some spaces are meant to be shared. Others are reserved.

Select residences extend upward into private rooftop terraces—places defined by openness, distance, and discretion. Above it all, these outdoor rooms offer a quieter way to experience light, air, and time.

Removed from the rhythm of the building below, they become personal retreats—unprogrammed, uninterrupted, and entirely one's own.



Above the Fairways

Perspective changes when the horizon opens up. Space feels lighter, movement slows, and the outside world recedes just enough to reset the day. These are moments designed to be used, not staged—private, open, and unselfconscious.

It's less about where you are, and more about how you feel here.





An Elevated Everyday

There is no script here.

Life unfolds naturally—sometimes social, sometimes solitary, always unforced. The setting adapts to the day rather than defining it, allowing routine to feel relaxed and personal.

Luxury, in this context, is simply having room to live at your own pace.





02

Location





Cap Cana, DR.

The Mina Collection is a private residential retreat in Cap Cana on the Dominican Republic's eastern coast, steps from Marina Cap Cana and Punta Espada. Purposefully low-rise and finely detailed, the architecture privileges long horizons, sheltered terraces, and cross-ventilated living tuned to the Caribbean climate.

Getting Here

Reach Mina via Punta Cana International Airport (PUJ), ~15 minutes by car, with nonstop flights throughout the year. Private jets are accommodated at PUJ; VIP assistance and SUV transfers are available. Arrivals by yacht can dock at Marina Cap Cana, and helicopter transfers to Cap Cana's helipad are offered on request.



*“Nowhere else in the world is there a golf
experience like this...”*

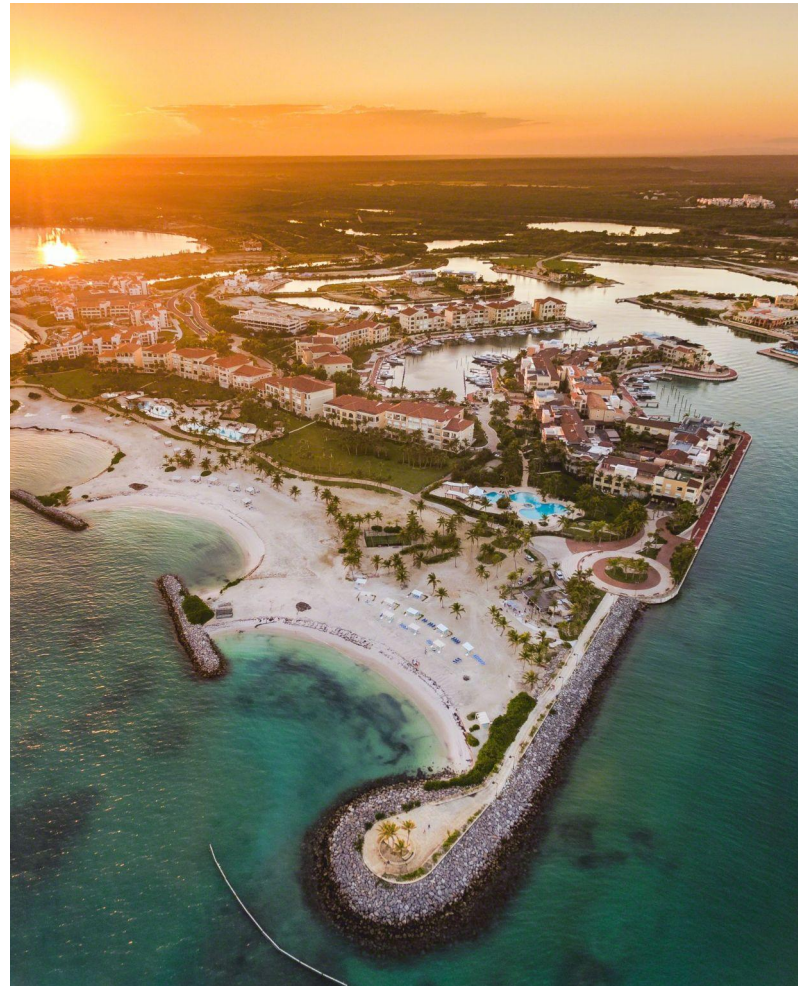
A handwritten signature in black ink that reads "Jack Nicklaus". The signature is fluid and cursive, with the first letter of "Jack" being a large, stylized capital "J".
Jack Nicklaus



Cap Cana, DR.

Cap Cana Marina is one of the Caribbean's premier inland marina—150+ slips serving large and superyachts, sheltered by a protected harbor. It anchors a waterfront of dining and clubs and hosts international billfish tournaments each season.

150+ slips • superyacht-capable • protected inland harbor





Resort, Community + More

Mina sits within Cap Cana's established world of resorts and hotels, and brings that same standard of service into a private residential building. A dedicated, hotel-style operations manager oversees daily life in the property—coordinating everything from valet and maintenance to arrivals and guest services.

Residents have access to concierge support, restaurant and activity bookings, catering for dinners at home, housekeeping coordination, and pre-arrival preparation. The result is a home plugged into Cap Cana's resort community, with amenities and service that feel hotel-like, yet remain quietly residential.



The Mina Collection, Thirty boutique residences at the heart of Cap Cana: anchored in Las Iguanas, between Punta Espada and the marina, steps from the St. Regis and Green Village. Close to everything; **serenely apart**.



MINA, CAP CANA

Las Iguanas Golf Course

SotoGrande

Las Iguanas Back Nine

Golden Bear

Las Iguanas Driving Range

Caribbean Sea

St. Regis Hotel

Punta Espada
Golf Course

Green Village

Las Iguanas Residences

Green Village
Condos



Residence Floor Plans

At *The Mina Collection*, every residence has been thoughtfully composed to celebrate space, light, and connection. Expansive layouts embrace the outdoors, with flowing interiors that adapt effortlessly to modern living. Each plan reflects a rare attention to detail—balancing openness with privacy, refinement with comfort. These are homes designed not just to be lived in, but to be experienced.

Artist representation of unit A1 Loft Living and Terrace

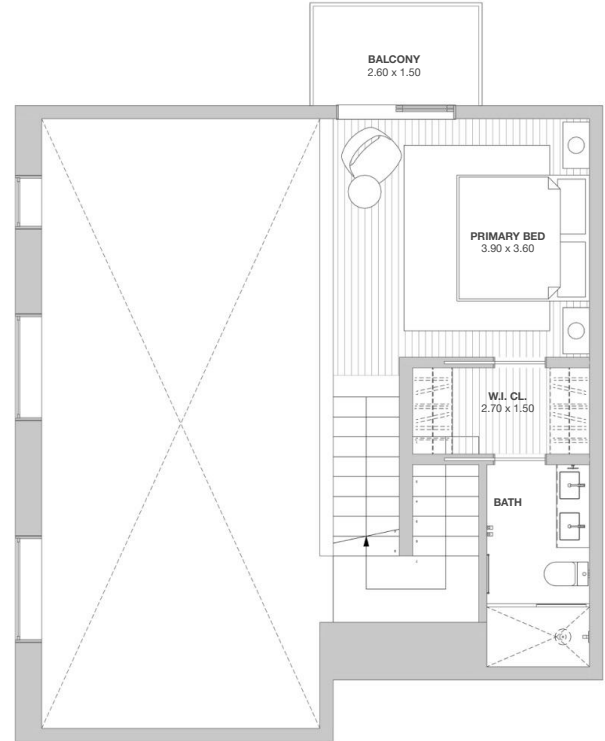
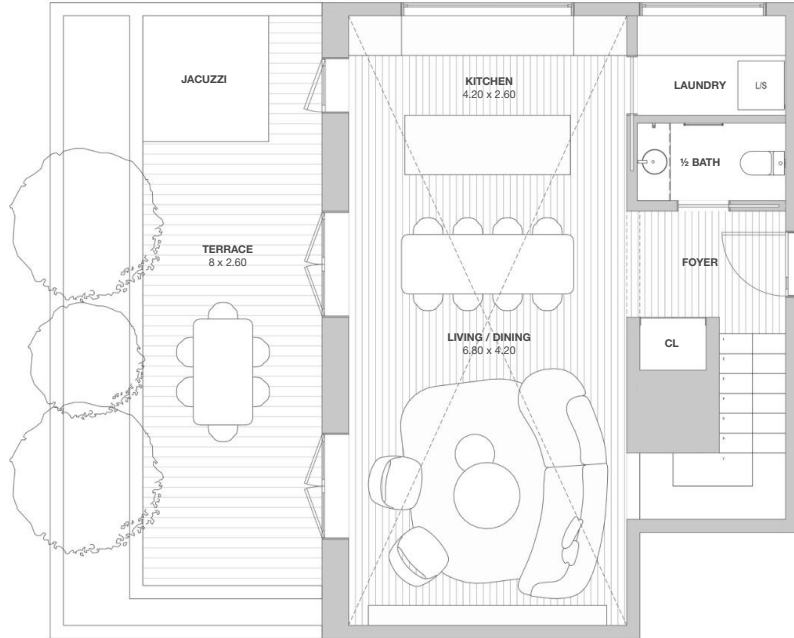
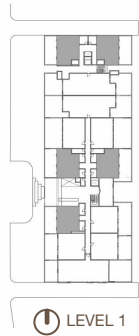




MINA, CAP CANA

LOFT RESIDENCE

BEDROOMS	1
BATHROOMS	1.5
PARKING SPACES	2
INTERNAL AREA	88 M ²
TERRACE AREA	22 M ²
TOTAL AREA	110 M ²



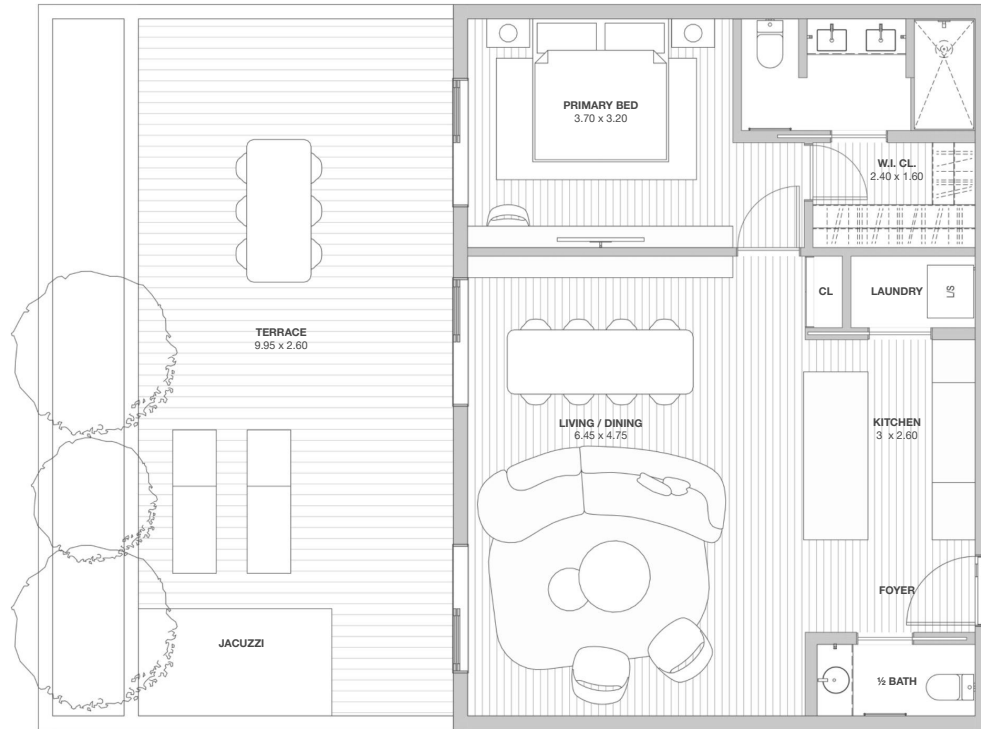
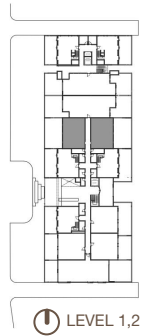
Indicative plans and areas; subject to survey.
Dimensions, layouts and specifications may change without notice. Furniture not included. Final product may differ. Refer to the Disclosure Document and Contract.



MINA, CAP CANA

1 BED RESIDENCE A2

BEDROOMS	1
BATHROOMS	1.5
PARKING SPACES	2
INTERNAL AREA	75 M2
TERRACE AREA	40 M2
TOTAL AREA	115 M2



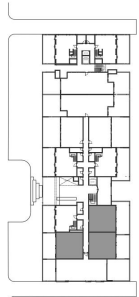
Indicative plans and areas; subject to survey.
Dimensions, layouts and specifications may change without notice. Furniture not included. Final product may differ. Refer to the Disclosure Document and Contract.



MINA, CAP CANA

1 BED RESIDENCE A3

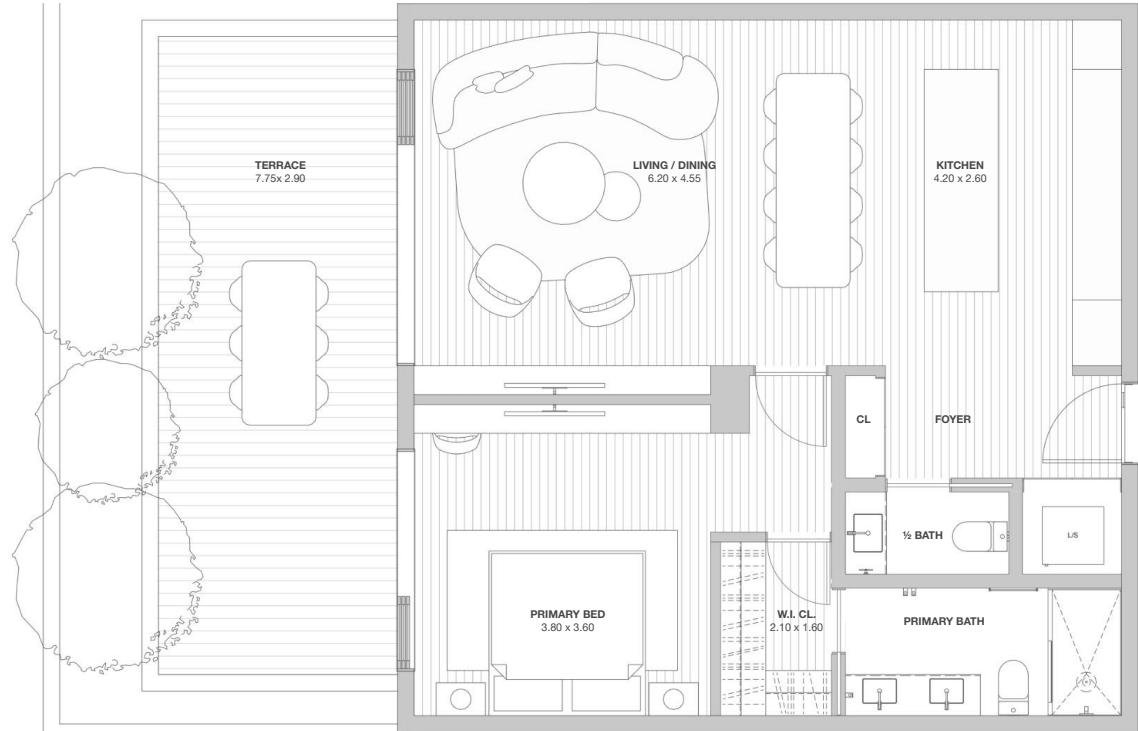
BEDROOMS	1
BATHROOMS	1.5
PARKING SPACES	2
INTERNAL AREA	78 M2
TERRACE AREA	40 M2
TOTAL AREA	118 M2



ⓘ LEVEL 1, 2, 3**

** Only 2 Units on Level 3 and only face East

Indicative plans and areas; subject to survey.
Dimensions, layouts and specifications may change without notice. Furniture not included. Final product may differ. Refer to the Disclosure Document and Contract.

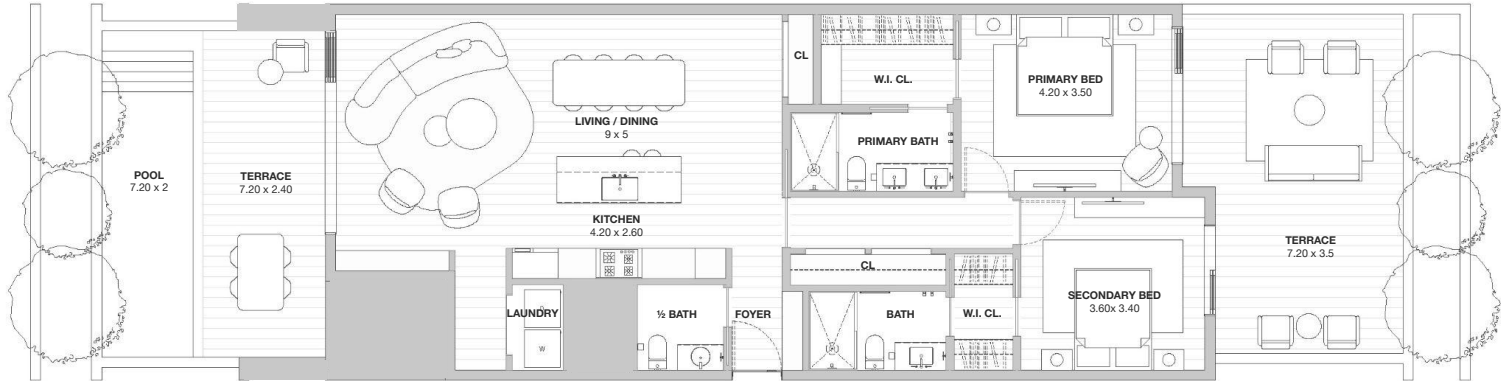
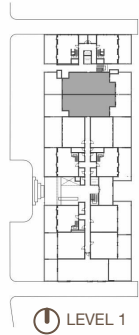




MINA, CAP CANA

2 BED RESIDENCE B1 TERRACE

BEDROOMS	2
BATHROOMS	2.5
PARKING SPACES	2
INTERNAL AREA	118 M2
TERRACE AREA	40 M2
TOTAL AREA	158 M2



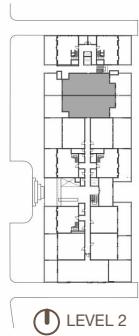
Indicative plans and areas; subject to survey.
Dimensions, layouts and specifications may change without notice. Furniture not included. Final product may differ. Refer to the Disclosure Document and Contract.



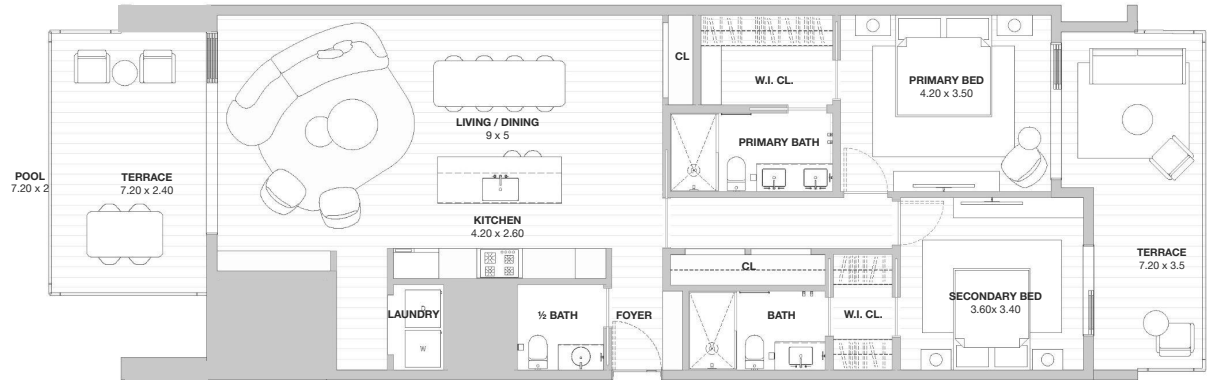
MINA, CAP CANA

2 BED RESIDENCE B1 BALCONY

BEDROOMS	2
BATHROOMS	2.5
PARKING SPACES	2
INTERNAL AREA	118 M2
TERRACE AREA	30 M2
TOTAL AREA	148 M2



LEVEL 2



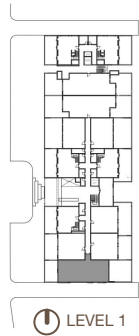
Indicative plans and areas; subject to survey.
Dimensions, layouts and specifications may change without notice. Furniture not included. Final product may differ. Refer to the Disclosure Document and Contract.



MINA, CAP CANA

2 BED RESIDENCE B2 TERRACE

BEDROOMS	2
BATHROOMS	2.5
PARKING SPACES	2
INTERNAL AREA	124 M ²
TERRACE AREA	40 M ²
TOTAL AREA	164 M ²



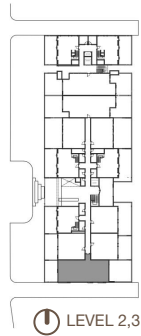
Indicative plans and areas; subject to survey.
Dimensions, layouts and specifications may change without notice. Furniture not included. Final product may differ. Refer to the Disclosure Document and Contract.



MINA, CAP CANA

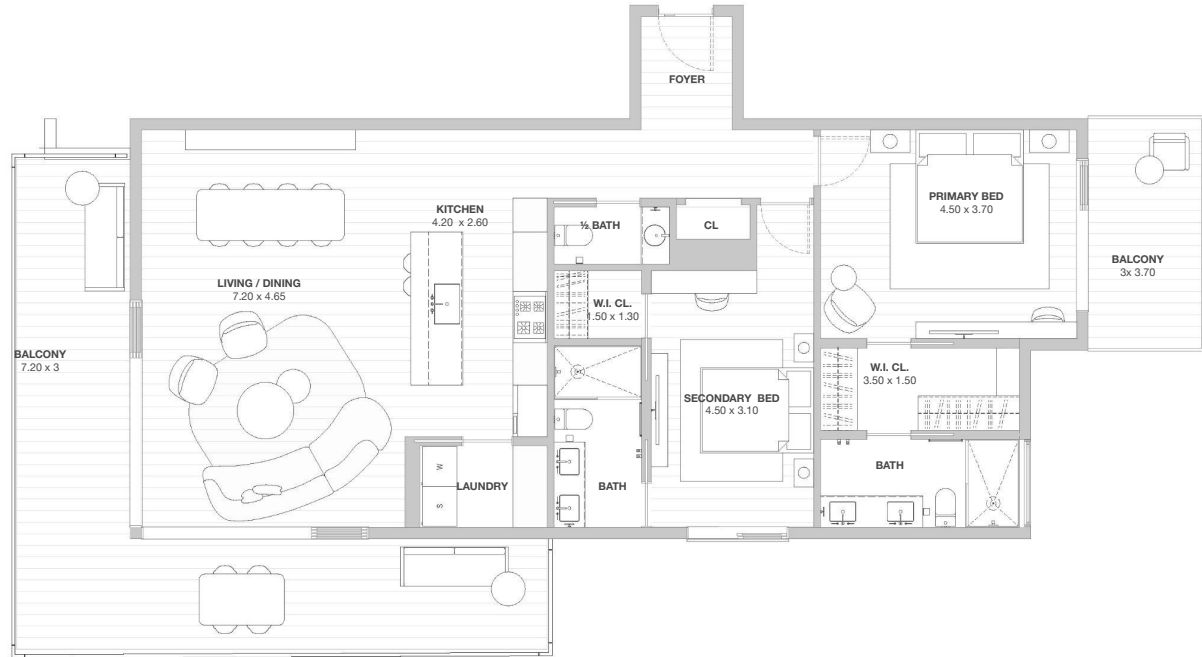
2 BED RESIDENCE B2 BALCONY

BEDROOMS	2
BATHROOMS	2.5
PARKING SPACES	2
INTERNAL AREA	124 M ²
TERRACE AREA	40 M ²
TOTAL AREA	164 M ²



LEVEL 2,3

Indicative plans and areas; subject to survey.
Dimensions, layouts and specifications may change without notice. Furniture not included. Final product may differ. Refer to the Disclosure Document and Contract.

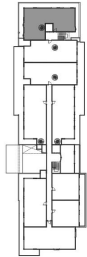




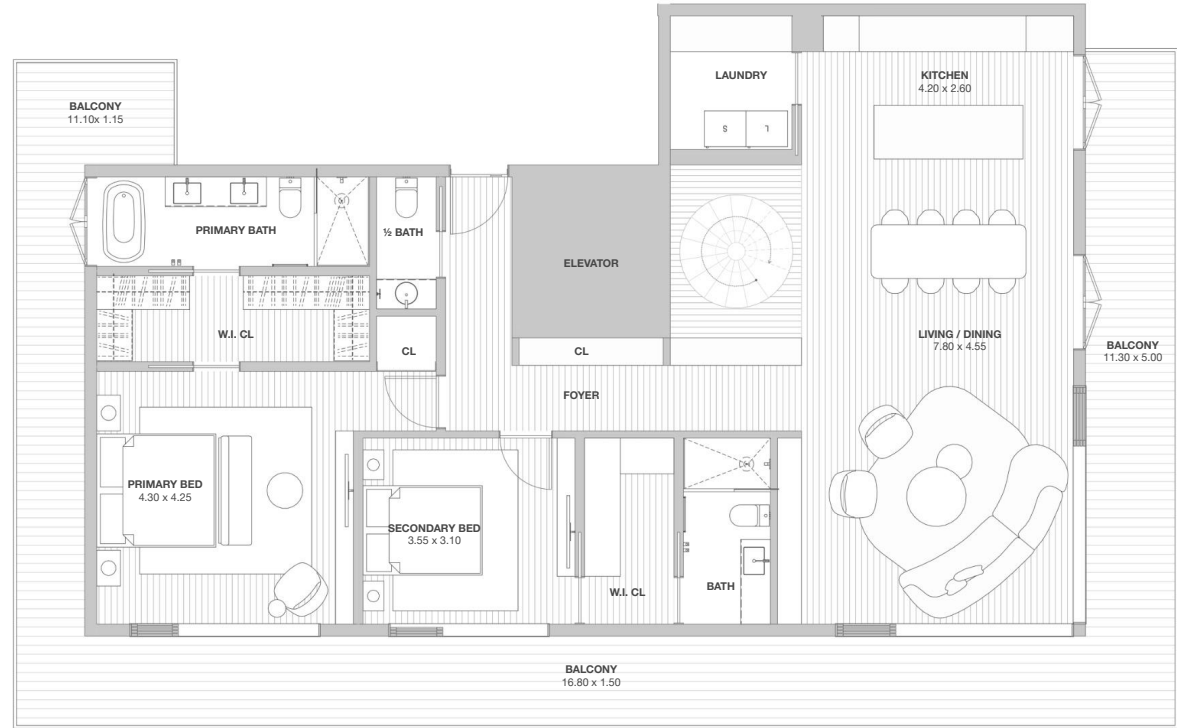
MINA, CAP CANA

PENTHOUSE COLLECTION R1

BEDROOMS	2
BATHROOMS	2.5
PARKING SPACES	2
INTERNAL AREA	154 M2
TERRACE AREA	90 M2
TOTAL AREA	244 M2



LEVEL 3 + ROOFTOP



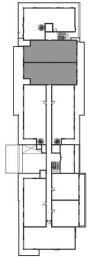
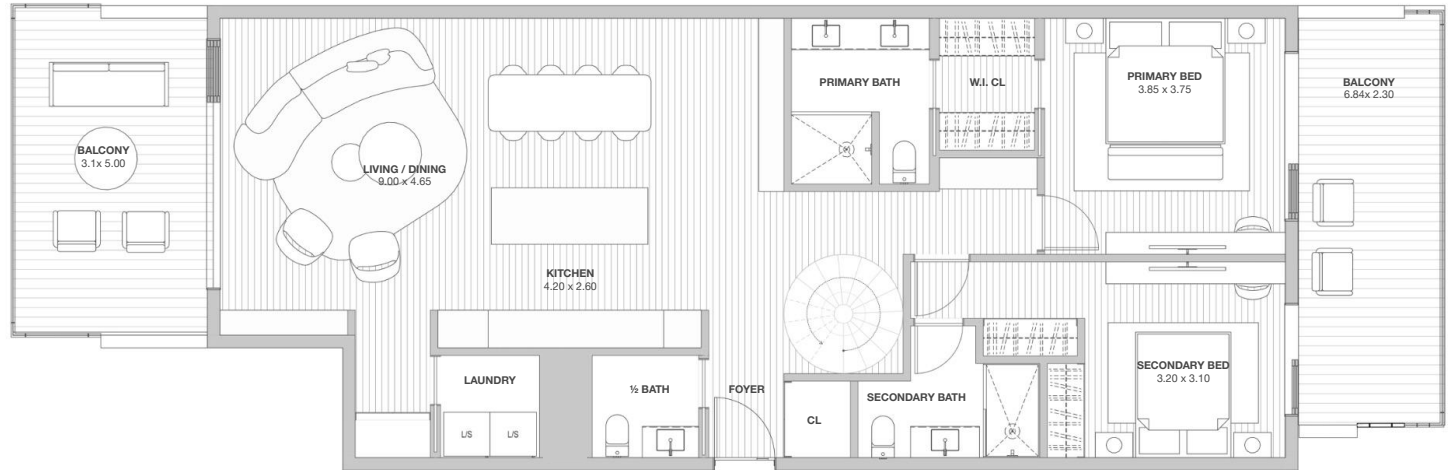
Indicative plans and areas; subject to survey.
Dimensions, layouts and specifications may change without notice. Furniture not included. Final product may differ. Refer to the Disclosure Document and Contract.



MINA, CAP CANA

PENTHOUSE COLLECTION B₁

BEDROOMS	2
BATHROOMS	2.5
PARKING SPACES	2
INTERNAL AREA	121 M ²
TERRACE AREA	90 M ²
TOTAL AREA	211 M ²



📍 LEVEL 3 + ROOFTOP

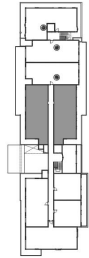
Indicative plans and areas; subject to survey.
Dimensions, layouts and specifications may change without notice. Furniture not included. Final product may differ. Refer to the Disclosure Document and Contract.



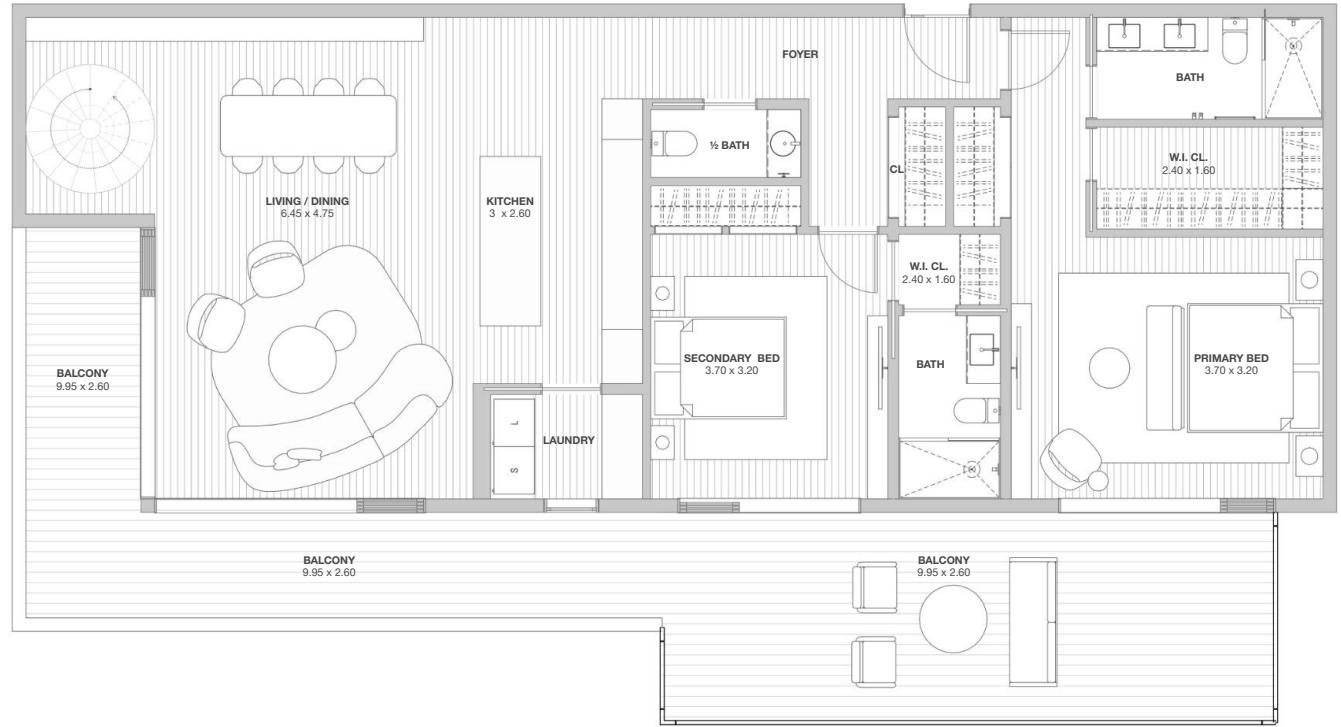
MINA, CAP CANA

PENTHOUSE COLLECTION o2

BEDROOMS	2
BATHROOMS	2.5
PARKING SPACES	2
INTERNAL AREA	139 M2
TERRACE AREA	90 M2
TOTAL AREA	229 M2



ⓘ LEVEL3 + ROOFTOP



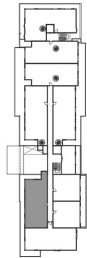
Indicative plans and areas; subject to survey.
Dimensions, layouts and specifications may change without notice. Furniture not included. Final product may differ. Refer to the Disclosure Document and Contract.



MINA, CAP CANA

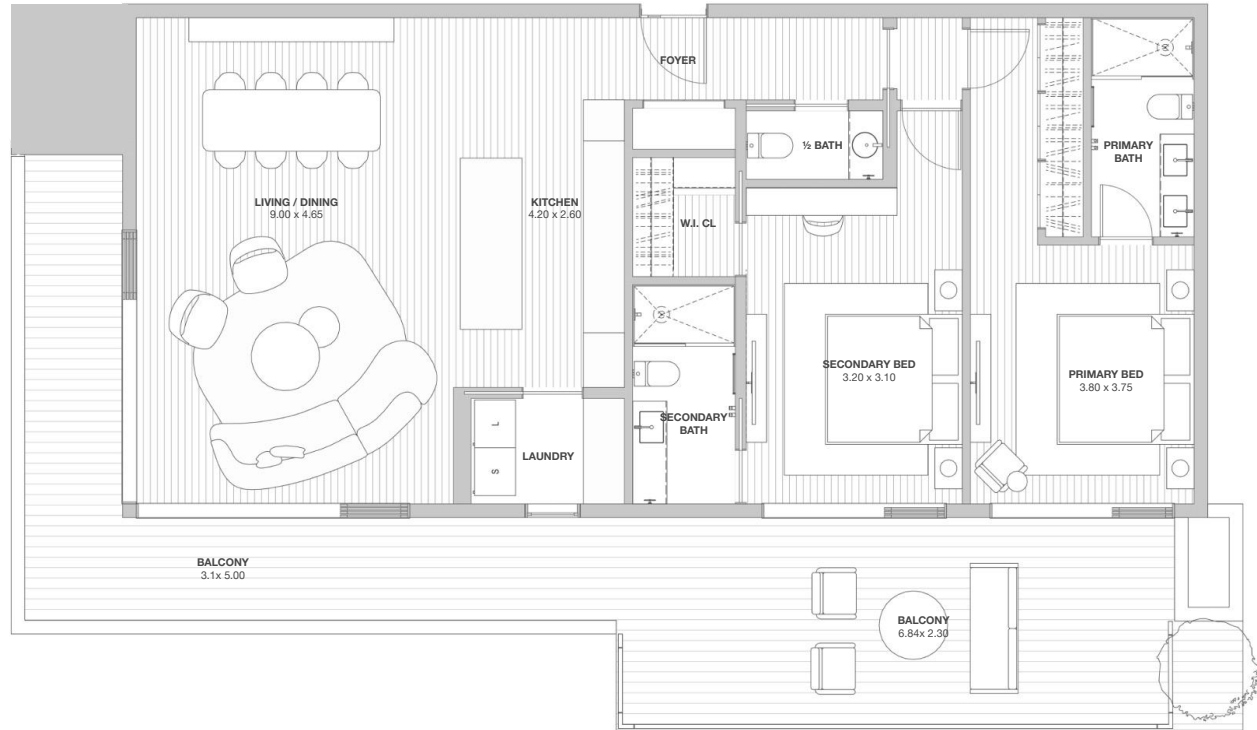
PENTHOUSE COLLECTION 03

BEDROOMS	2
BATHROOMS	2.5
PARKING SPACES	2
INTERNAL AREA	121 M2
TERRACE AREA	50 M2
TOTAL AREA	171 M2



LEVEL 3 + ROOFTOP

Indicative plans and areas; subject to survey.
Dimensions, layouts and specifications may change without notice. Furniture not included. Final product may differ. Refer to the Disclosure Document and Contract.





Design and Development Team

Behind Mina at Cap Cana stands a team of architects and developers with more than a century of combined experience and over 60 luxury projects completed across the globe. United by a belief that true luxury begins with design, the team brings together the disciplines of architecture, craft, and development.

Developed by:
REACH+CO

Designed by:
Atelier Reach Architects





\$5,000

TO RESERVE A UNIT

25%

AT CONTRACT SIGNING (MINUS \$5,000 DEPOSIT)

45%

DURING CONSTRUCTION

30%

AT PROJECT COMPLETION

CONSTRUCTION BEGINS: 2026 Q3

PROJECT COMPLETION: 2028 Q4

The payment schedule and construction dates shown are illustrative and subject to change without notice, including adjustments to milestones and percentages. Timing remains contingent on permitting, approvals, contractor sequencing, supply chain conditions, and force majeure. Only the signed Purchase Agreement and final approved plans govern.



THANKS FOR CONSIDERING

REACH+CO

A LUXURY DEVELOPMENT BRAND

NOVEMBER 2025

No Representations or Warranties

No representations or warranties, express or implied, are given in, or in respect of, this presentation or the accompanying oral presentation (collectively, this "presentation"). This presentation does not purport to be comprehensive or all-inclusive and is for information purposes only. It does not purport to contain all of the information that may be required to perform a complete analysis of the business or prospects of Reach&co LLC or the "Company"). To the fullest extent permitted by law, in no circumstances will Reach&co or its subsidiaries (collectively, the "ARA GROUP") or any of their respective shareholders, affiliates, representatives, partners, directors, officers, employees, advisers or agents be responsible or liable for any direct, indirect or consequential loss or loss of profit arising from the use of this presentation, its contents, its omissions, reliance on the information contained within it, or on opinions communicated in relation thereto or otherwise arising in connection therewith. Industry and market data used in this presentation have been obtained from third-party industry publications and sources, as well as from research reports prepared for other purposes that Reach&co believes are reasonable. Reach&co has not independently verified the data obtained from these sources and cannot assure you of the data's accuracy or completeness, and this data is subject to change. Except as otherwise required by applicable law, Reach&co disclaims any duty to update the information contained in this presentation.

Description of Key Partnerships

This presentation contains descriptions of some of Reach&co's key business partnerships with whom Reach&co has entered into feasibility studies, indications of interest, term sheets, memoranda of understanding or other preliminary arrangements. These descriptions are based on the Reach&co's management team's discussions and the latest available information and estimates as of the date of this presentation. In each case, these descriptions are subject to negotiation and execution of definitive agreements that may not have been completed as of the date of this presentation and, as a result, the nature, scope and content of these key business partnerships remain subject to change.

Trademarks

This presentation contains the trademarks, service marks, trade names and copyrights of Reach&co and other companies, which are the property of their respective owners.

Graphic Representations

Buildings depicted in this presentation have been rendered utilizing computer graphics unless otherwise photographed or credited.