



# THE LAKEFRONT



## 03

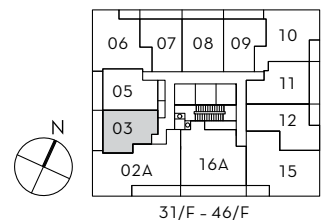
### 1 Bedroom

Suite Area: 485 S.F.

Balcony Area: 90 S.F.

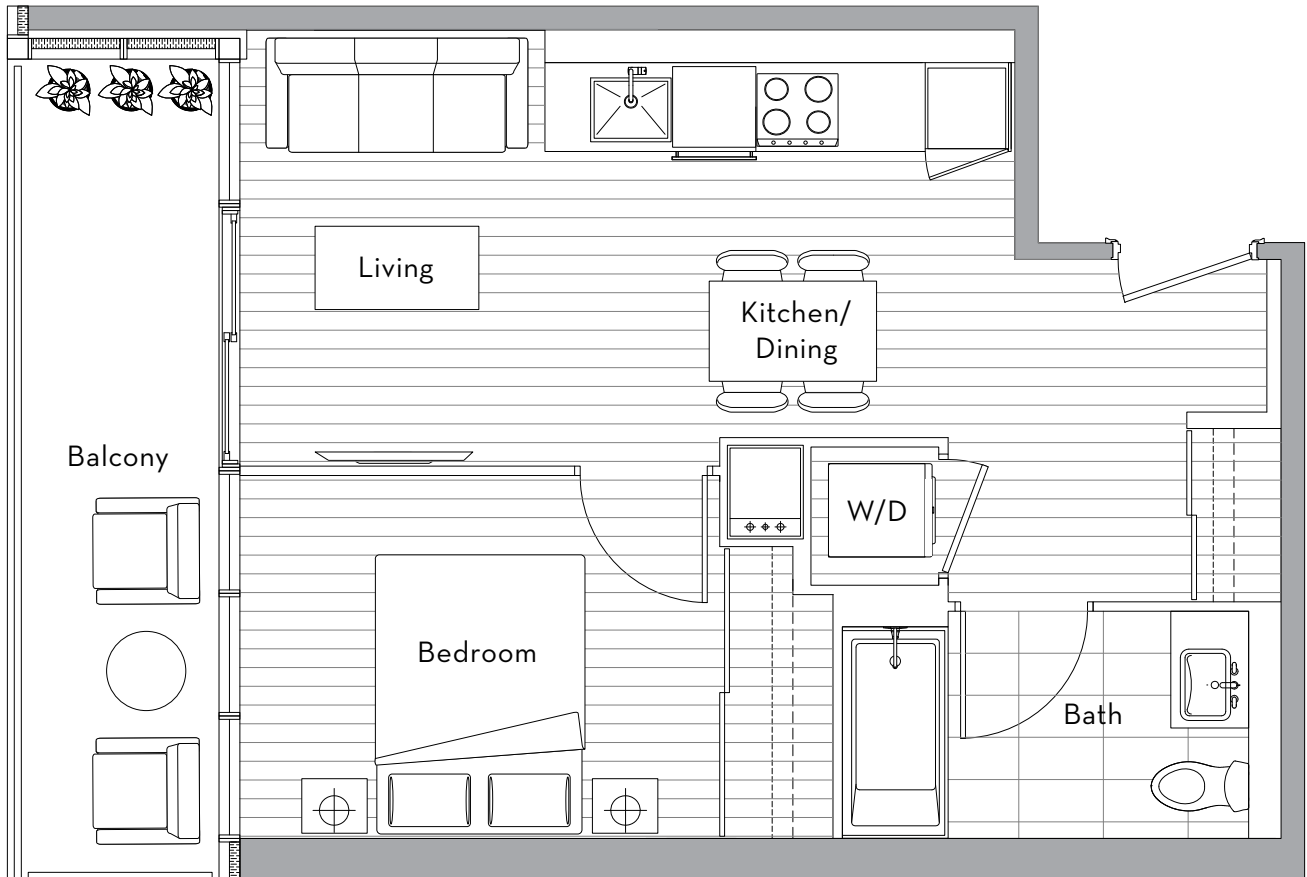
**Total Area: 575 S.F.**

The developer reserves the right to make minor revisions to interior wall locations and exterior window system. All materials and drawings are approximate. Information is subject to change without notice. Actual square footage may vary from the stated floor plan. Furniture and upgrades shown on plans are for illustration purposes only and are not included. E. & O. E.





# THE LAKEFRONT



## 05

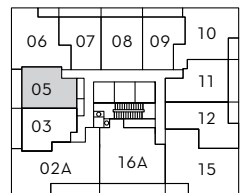
### 1 Bedroom

Suite Area: 492 S.F.

Balcony Area: 88 S.F.

**Total Area: 580 S.F.**

The developer reserves the right to make minor revisions to interior wall locations and exterior window system. All materials and drawings are approximate. Information is subject to change without notice. Actual square footage may vary from the stated floor plan. Furniture and upgrades shown on plans are for illustration purposes only and are not included. E. & O. E.



31/F - 46/F



# THE LAKEFRONT



# 15

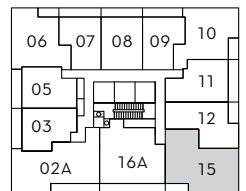
## 3 Bedroom

Suite Area: 878 S.F.

Balcony Area: 50 S.F.

**Total Area: 928 S.F.**

The developer reserves the right to make minor revisions to interior wall locations and exterior window system. All materials and drawings are approximate. Information is subject to change without notice. Actual square footage may vary from the stated floor plan. Furniture and upgrades shown on plans are for illustration purposes only and are not included. E. & O. E.



31/F - 46/F



# THE LAKEFRONT



## 16A

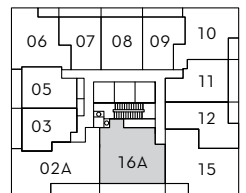
**3 Bedroom**

Suite Area: 868 S.F.

Balcony Area: 150 S.F.

**Total Area: 1,018 S.F.**

The developer reserves the right to make minor revisions to interior wall locations and exterior window system. All materials and drawings are approximate. Information is subject to change without notice. Actual square footage may vary from the stated floor plan. Furniture and upgrades shown on plans are for illustration purposes only and are not included. E. & O. E.



31/F - 46/F

# The LakeFront Condominiums

## Interior And Exterior Features

- Choice of three interior colour schemes
- Open balconies for all suites
- Laminate flooring throughout the main living area, bedrooms, den and sunroom
- Interior suite and closet doors are trimmed with wood-look finish
- Roller-shade window coverings
- Television and telephone jacks in every principal room
- Stackable European premium quality front load washer and dryer
- Central heating and cooling in every principal room

## Bathroom

- Custom medicine cabinet with mirror, shelves and built-in lighting
- Woodgrain laminate vanity cabinet with soft close hardware
- Engineered quartz stone countertop
- Kohler under-mount sink with polished chrome Grohe faucet
- Dual flush toilet with soft close seat
- Recessed pot lighting
- Marble tile flooring and tub/shower surround
- Tub with marble tile apron front
- Polished chrome Grohe faucet, tub spout and shower head
- Shower curtain rod

## Kitchen

- Custom woodgrain laminate cabinetry with open under-cabinet lighting
- Cabinets feature soft close hardware, a magic corner (where applicable) and sliding basket under the kitchen sink
- Drawer organizers for cutlery
- Engineered quartz stone countertop
- Marble tile backsplash
- Track or pot lighting (depending on kitchen configuration)
- Large single bowl stainless steel under-mount sink
- Polished chrome Grohe faucet with lever handle and pull down sprayer

## Appliance Package Including

- Bosch refrigerator with integrated panel
- Bosch hood fan
- Bosch dishwasher with integrated panel
- Bosch electric cook-top
- Bosch wall oven
- Panasonic microwave oven with stainless steel trim kit

All suites receive 24" appliance package

3 BR and PH suites receive 30" appliance package upgrade