

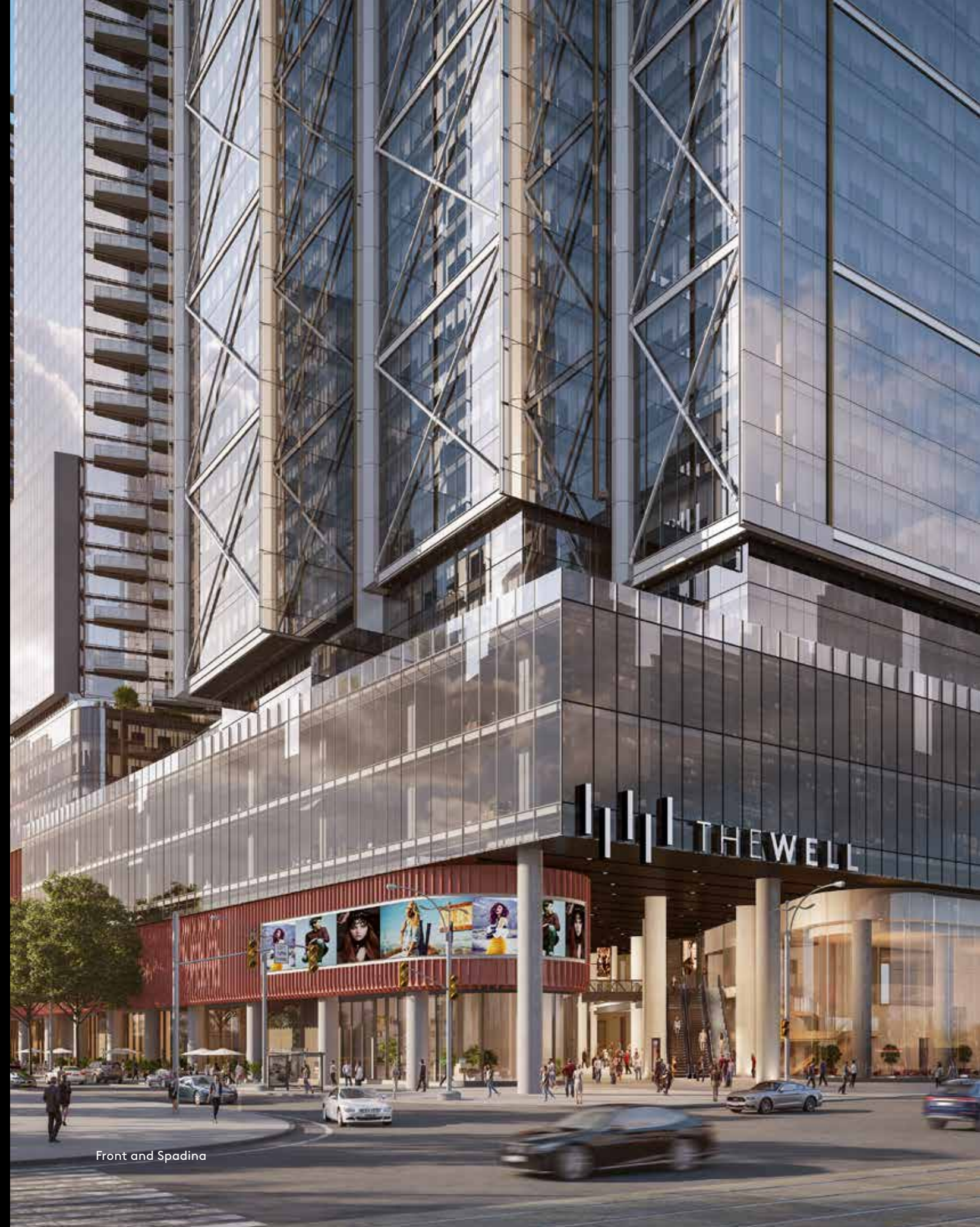


TRIDEL®

AT THE WELL

Live Well.

The Well sets the stage for meaningful experiences that draw people from down the street and across Toronto to live, eat, shop, work and play.



Front and Spadina

Welcome

Live

8 Experience the full spectrum of inspirational urban living without leaving home.

Eat

18 Celebrate the art and enjoyment of food with local favourites and global flavours.

Shop

24 Explore the best new pop-ups, leading-edge retail concepts and traditional retailers.

Work

34 Consider leasing flexible, professional office space for your career endeavours.

Play

42 Gather with friends and neighbours for entertainment, art and cultural events.

Classic I & II

58 Discover the Classic Series condominium residences and their stunning modern design.

Signature

84 Live above the grand promenade of Wellington in a luxurious, boutique Signature Series suite.

Innovation

96 Find out how Tridel is dedicated to innovation, and leads the way in sustainable building.

Tridel

108 Learn about the Tridel philosophy of building homes that will last and be enjoyed for generations.

Live

Green spaces, an open-air public promenade and an atmosphere of discovery come together in inspirational, centrally located residences that offer an extension of the King West lifestyle. The Well offers residential suites spread throughout six buildings in a mix of luxury condominiums and premium purpose-built rentals. With convenient access to services, food, entertainment, retail and work space, residents can experience the full spectrum of urban living without needing to leave.



99% Walkable

With a Walk Score of 99*, the King & Spadina neighbourhood that The Well is part of is a walker's paradise. There's no need for a car when you live so close to some of the greatest streets and venues in North America. And you're just minutes from the Spadina and King streetcar stops.

King Street: 5-Minute Walk**

Lined with boutique bakeries, celebrity-chef-owned restaurants, contemporary offices, clubs and pubs, and one-off stores, King Street is the epicentre of sophistication. It's a marvel of design and architectural styles, where glamorous new buildings take their place among preserved red-brick warehouses from the historic industrial era.

Theatre District: 8-Minute Walk**

First-run movies, art films, live classical music performances and musical theatre – it's all only a short walk from The Well. With the TIFF Bell Lightbox, Scotiabank Theatre, Roy Thompson Hall, Princess of Wales Theatre and Royal Alexandra Theatre so close, your entertainment options are infinite.



Live at The Well

*source: walkscore.com **source: googlemaps.com



Live at The Well



Queen West: 5-Minute Walk**

Once named the world's second hippest district by Vogue magazine. Queen West is bohemian, eclectic and intriguing. Wander along Queen West and discover art galleries, cafes, restaurants, unique shops, parks, restored Victorian-era hotels and other architectural treasures.

Harbourfront: 10-Minute Walk**

Just a quick walk south along Spadina, Lake Ontario glistens, offering stunning vistas of blue and continuous green space to relax in and catch a breeze. Ride your bike along the trails, skate on the ice rink in winter, take in art exhibits and music festivals, discover open-air pubs and restaurants, or watch the boats sail by.



Live at The Well

Fast, Easy Transit

The King streetcar can whisk you to your destination within minutes, westbound or eastbound. Connect with Line 1 of the subway at St. Andrew station. Or save time by boarding the Spadina streetcar to travel north to Line 2 of the subway or south to the lake.





Neighbourhood

Bordering Front, Spadina and Wellington, The Well is an extension of the urban vibrancy of King West. This neighbourhood comprises a diverse demographic, a rich history and a wide array of amenities. The Well's neighbourhood, through its history, architecture and location, provides a compelling blend of old and new, of heritage and hope. This unique character welcomes driven professionals, cultural explorers and curious newcomers alike to become a part of the story.

Live at The Well



Eat

Inspired by a mix of European food halls, fast casual eats, market fresh foods and world-class restaurants, The Well integrates culinary artists, creators and local farmers, perfectly balancing the celebration of homegrown local craft, convenient favourites and internationally inspired experiences.



Well
Served.

Unforgettable Dining

The Well's restaurant row brings together renowned chefs and globally inspired flavours to create new and unforgettable dining experiences to tempt every palate. Take a seat and enjoy masterfully planned food offerings inspired by international culinary innovation.



Eat at The Well



A Food Lover's Paradise

Discover a truly unique food shopping experience at Wellington Market, Toronto's go-to location for market fresh and artisan food, culinary exploration and experiences to share. Wellington Market offers fresh, local produce, artisan fare and a variety of casual dining options. Wellington Market is a destination for everything from the core essentials to the adventurous, celebrating the best of Toronto's diverse food scene in a lively environment.

Eat at The Well

WELLINGTON MARKET

Shop

Reimagined retail and service concepts invite those who seek the extraordinary, with retail trailblazers, fashion up-and-comers and established world-class brands.



Well
Spent.

Visionary Retail Concepts

Retail favourites, visionary flagships, culturally relevant pop-ups and experiential concepts ensure every transaction generates a story. More than 500,000 square feet of fluidly designed indoor and outdoor retail space bring together the best of the world's retail experiences, attracting shoppers from far and wide.



Shop at The Well



Shop at The Well



An Inspired Mix

The Well is more than a collection of buildings and stores — it's a dynamic and fluid experience that puts the things people want most within easy reach. Here, residents and visitors will find an inspired mix of fashion, fitness, beauty, health, entertainment, arts and culture, home decor and a variety of services.



Front and Spadina Retail Entrance

Shop at The Well

Extraordinary Retail

The design of The Well incorporates numerous unique features. These include significant publicly accessible areas and the creation of three new north-south pedestrian streets that intersect with the spine of the community – an inspiring glass canopied east-west pedestrian area that will connect all buildings within the development.



Sunlit Shopping

Open-Air Concept

Inside The Well, a dramatic glass canopy visually connects you to the outdoors, with soaring blue-sky views. When it rains or snows, you'll be sheltered from the elements, free to explore green spaces and enjoy the feeling of al fresco shopping and dining.



Shopping with Sky Views



Work

The offices at The Well will offer sophisticated workplace solutions, with over 1,000,000 square feet of flexible space available for rent in one of the most inspiring professional hubs in Toronto. Registered under the LEED® green building rating system, and targeting a LEED® Platinum certification, this 38 floor offset core building can accommodate the evolving needs of today's office users.

Well
Rounded.



Well Designed Workspaces

The Well is designed to meet the evolving needs of modern office employees, incorporating floor-to-ceiling windows, bike storage, shower facilities and flexible infrastructure for a more agile work experience.



Work at The Well

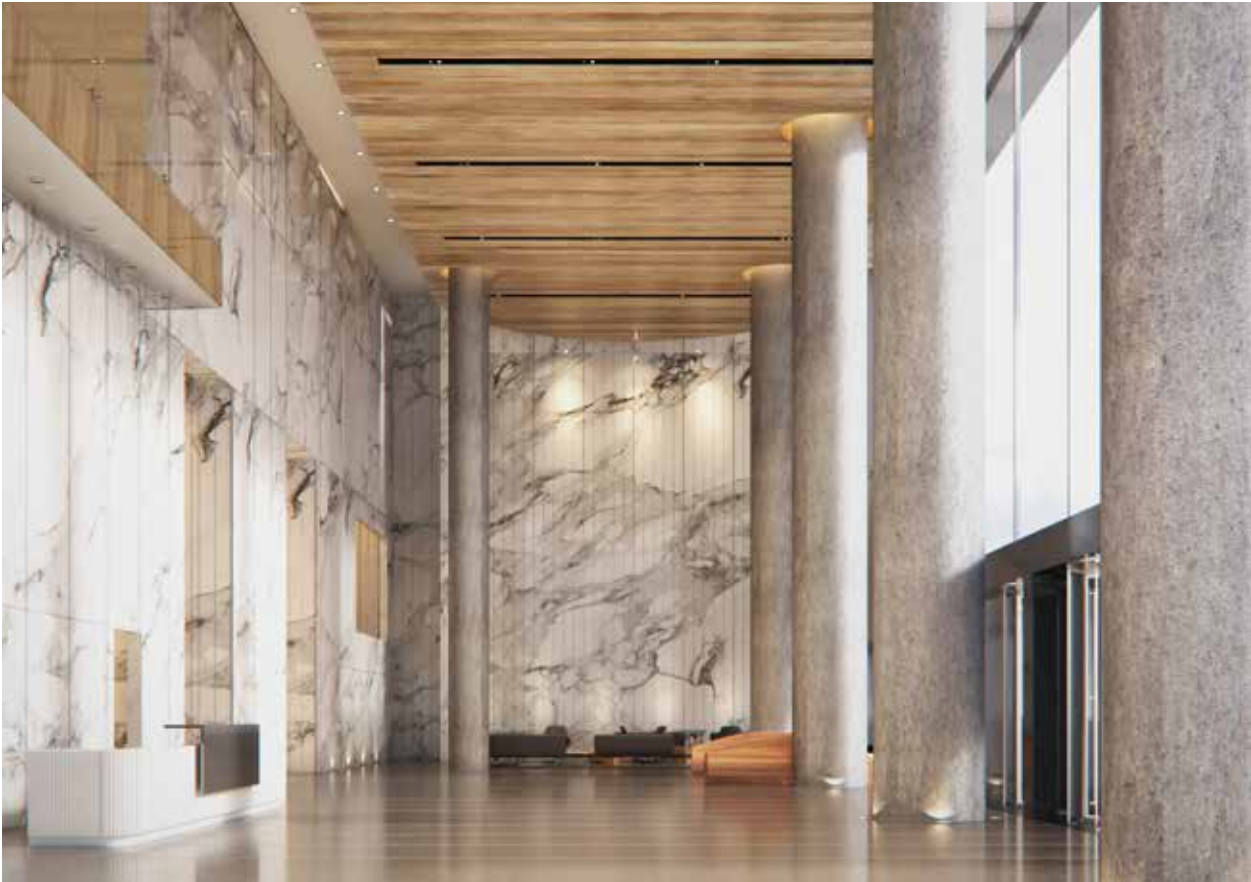


Office Lobby



Spadina and Wellington

Work at The Well



Office Lobby

Surrounded by the Right Industries

Located within a 1 km radius of The Well are several industries that are always on the lookout for new office space. Those industries include Professional, Scientific and Technical Services, and Finance & Insurance.



Spadina Office Entrance



Play

The Well is grounded in a sense of curiosity and a common desire to learn and grow. Vibrant community spaces host a diverse collection of curated experiences, events and programming designed to spark discovery and ignite a sense of community.

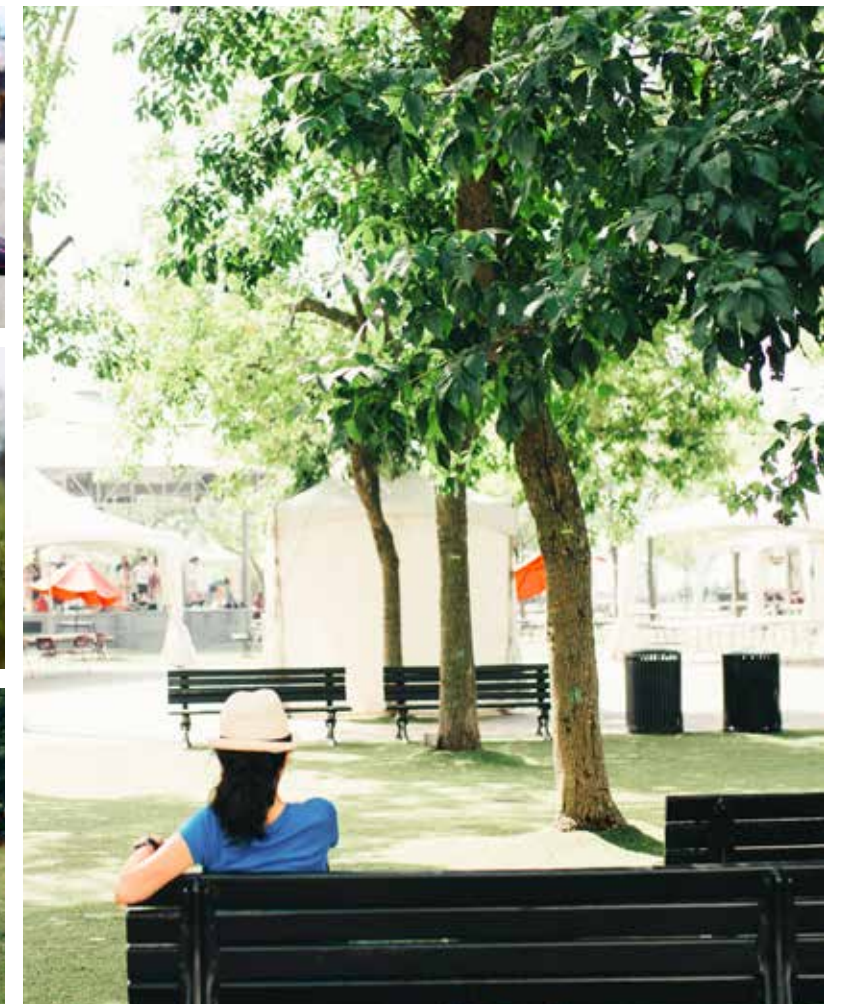


Well Planned.

Indoor and outdoor spaces populate The Well, enabling the opportunity to gather, entertain and engage with art, culture and community programming – whether you live, work or play there. One third of the total area of The Well will be publicly accessible outdoor space.



Play at The Well





The Wellington Promenade

A 450-metre park with an 18-metre-wide promenade stretches from Clarence Square off Spadina to Victoria Memorial Park along the south side of Wellington Street, realizing a vision for the street that dates back to the mid-19th century. The promenade is lined with restaurants, making it a marquee destination and gathering place.

Play at The Well



Wellington Promenade



Play at The Well

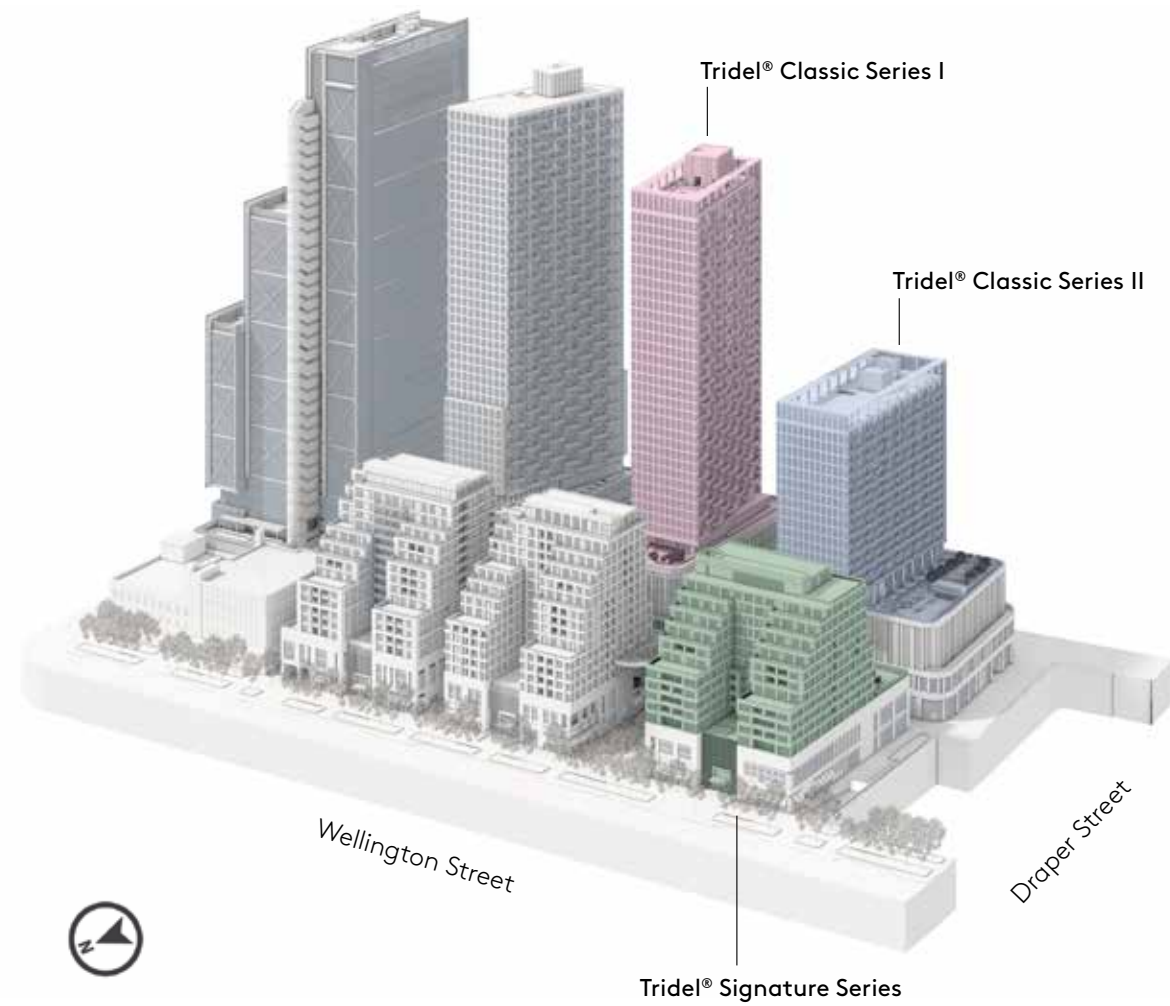


The Cat Park

A cat-themed park extends north from the Wellington Promenade, connecting it with King Street. Complete with a generous planting of catnip, black locust and eastern bud, the Cat Park is lined with a cascading water feature. Seating and lighting create a welcoming environment, while four cat statues add even more feline interest to the space.



The Well Community



TRIDEL®

AT THE WELL

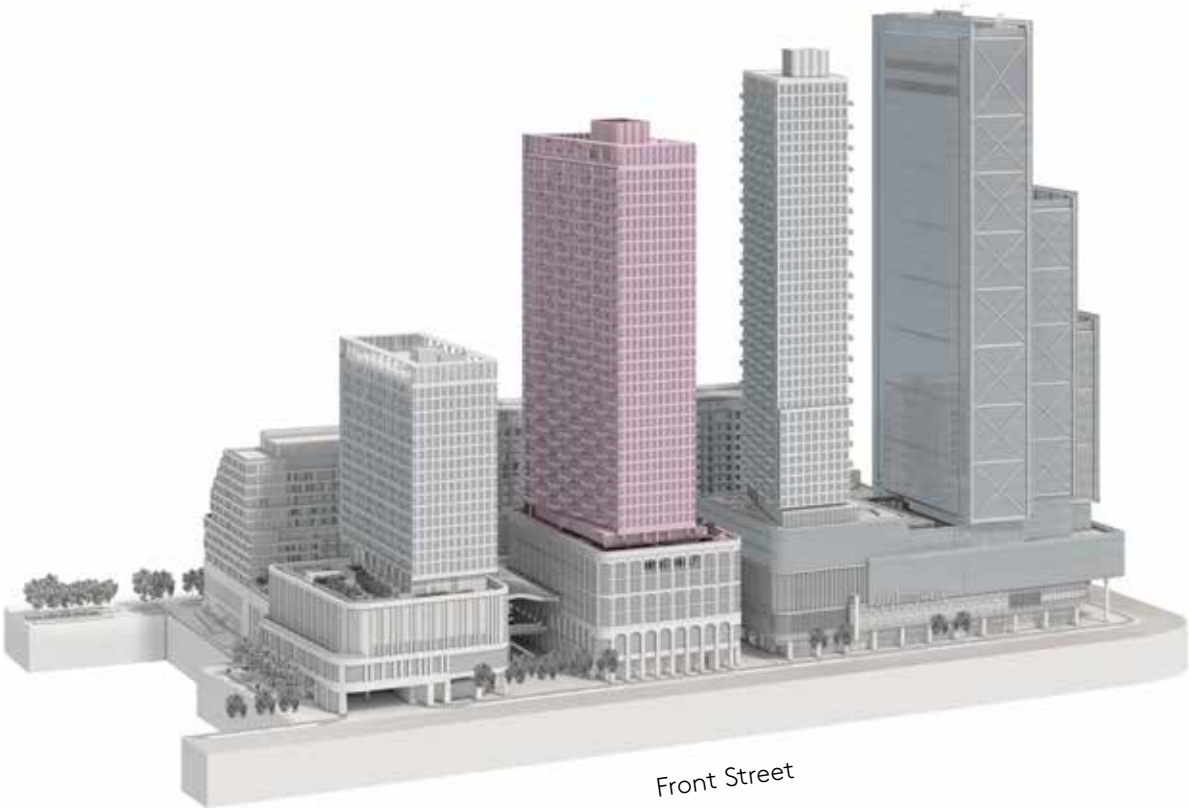
Tridel, Canada's leader in condominium living, introduces Toronto's most anticipated condominium lifestyle at The Well. It's a bold reflection of Toronto's energy and diversity and an extension of the urban vibrancy of King West. The Well condominiums at Front and Spadina offer two distinct living opportunities: urban living along Front Street and boutique signature living along Wellington Street. With convenient access to services, food, entertainment, retail and work space, residents can experience the full spectrum of vibrant downtown living at their doorstep.



CLASSIC SERIES I

CLASSIC SERIES I

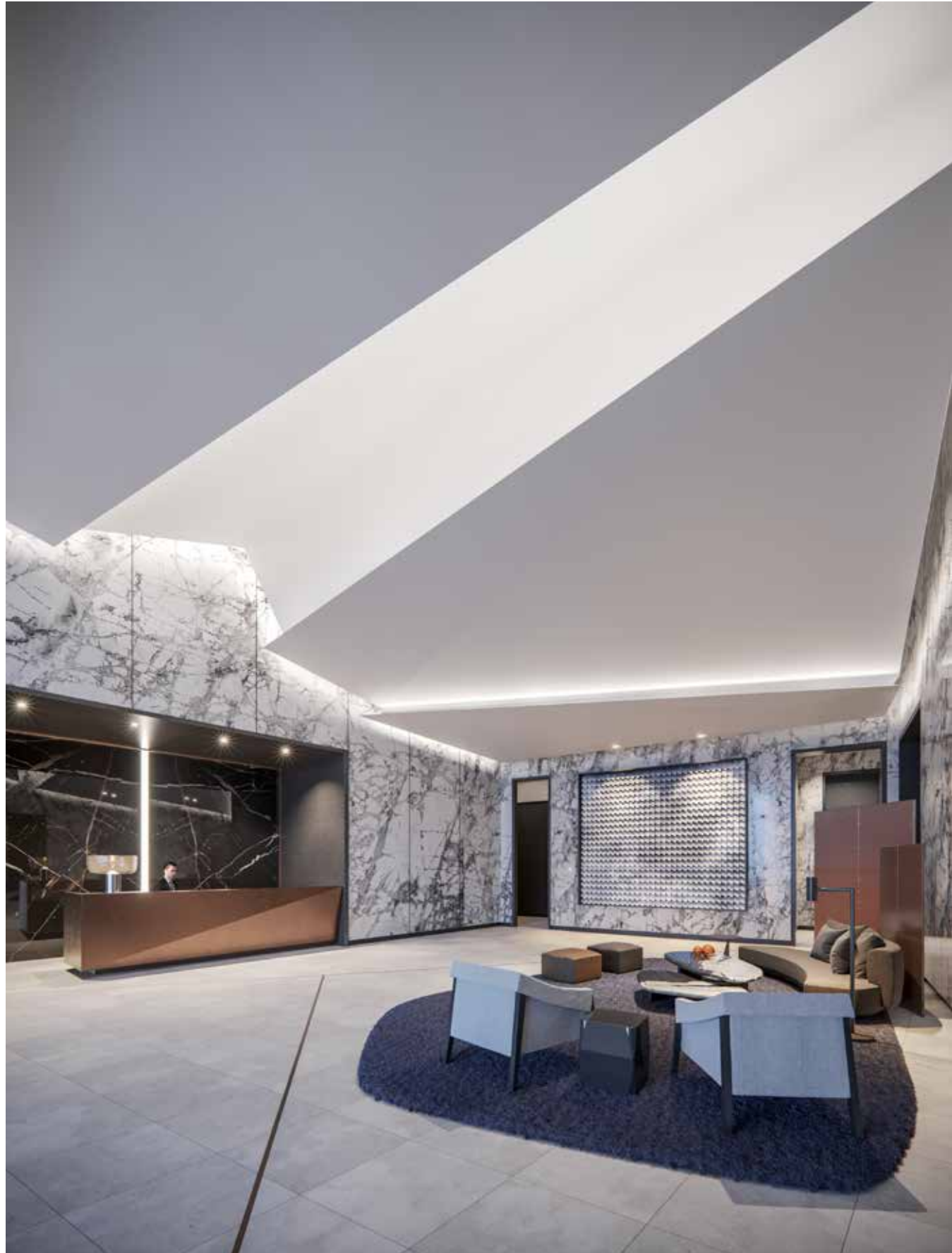
Classic I soars above The Well community, offering spectacular views of an incredible cityscape. With each balcony shaped by a slightly different-sized polygon, the building has a distinctive, unusual look. Inside, each suite is finished in contemporary style, a perfect backdrop for an enriched urban lifestyle.



* The Vendor shall not be liable or responsible for any warranties or representations made in terms of the creation and completion of any of the future proposed Rail Deck Park.



Entrance



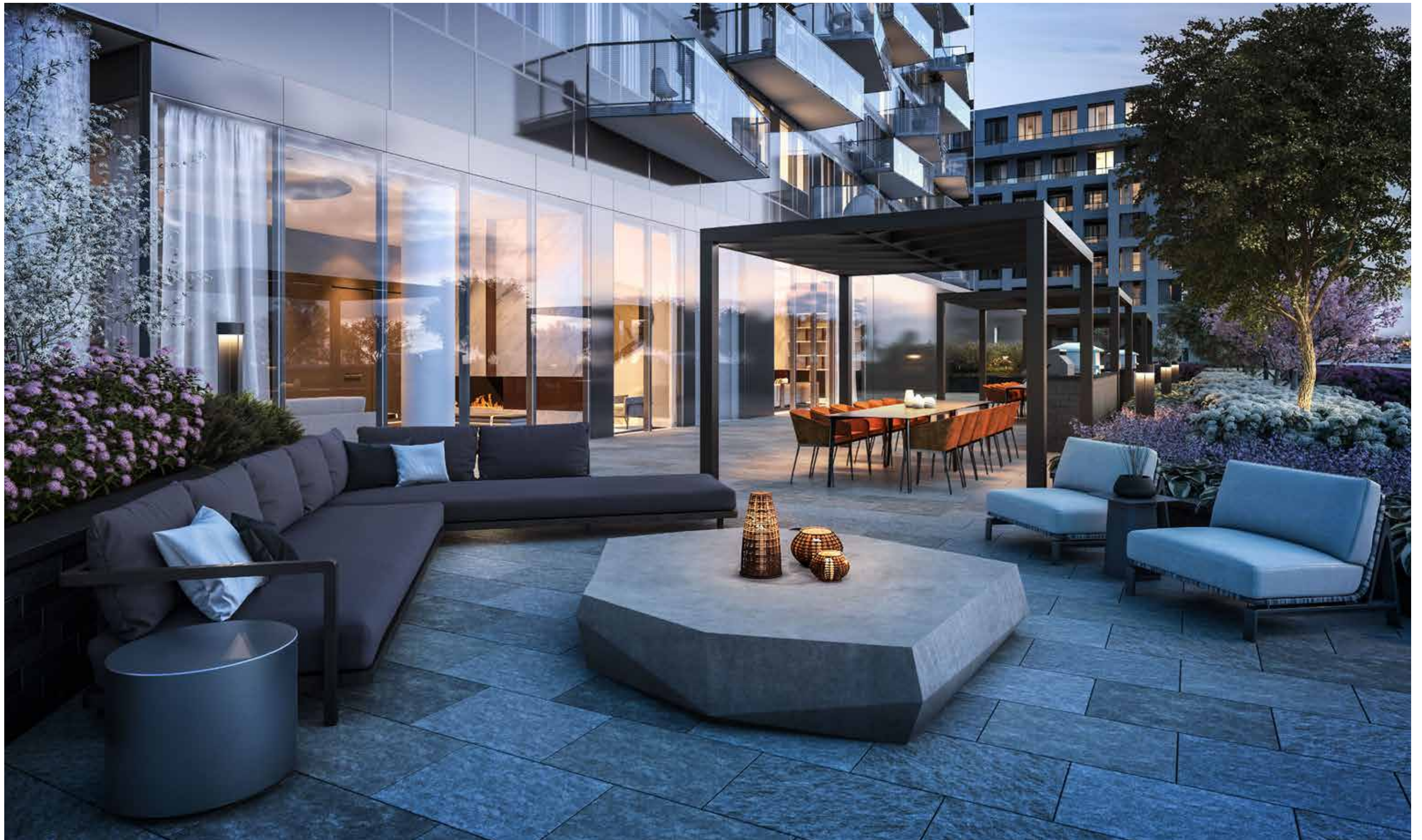
Lobby



Party Room



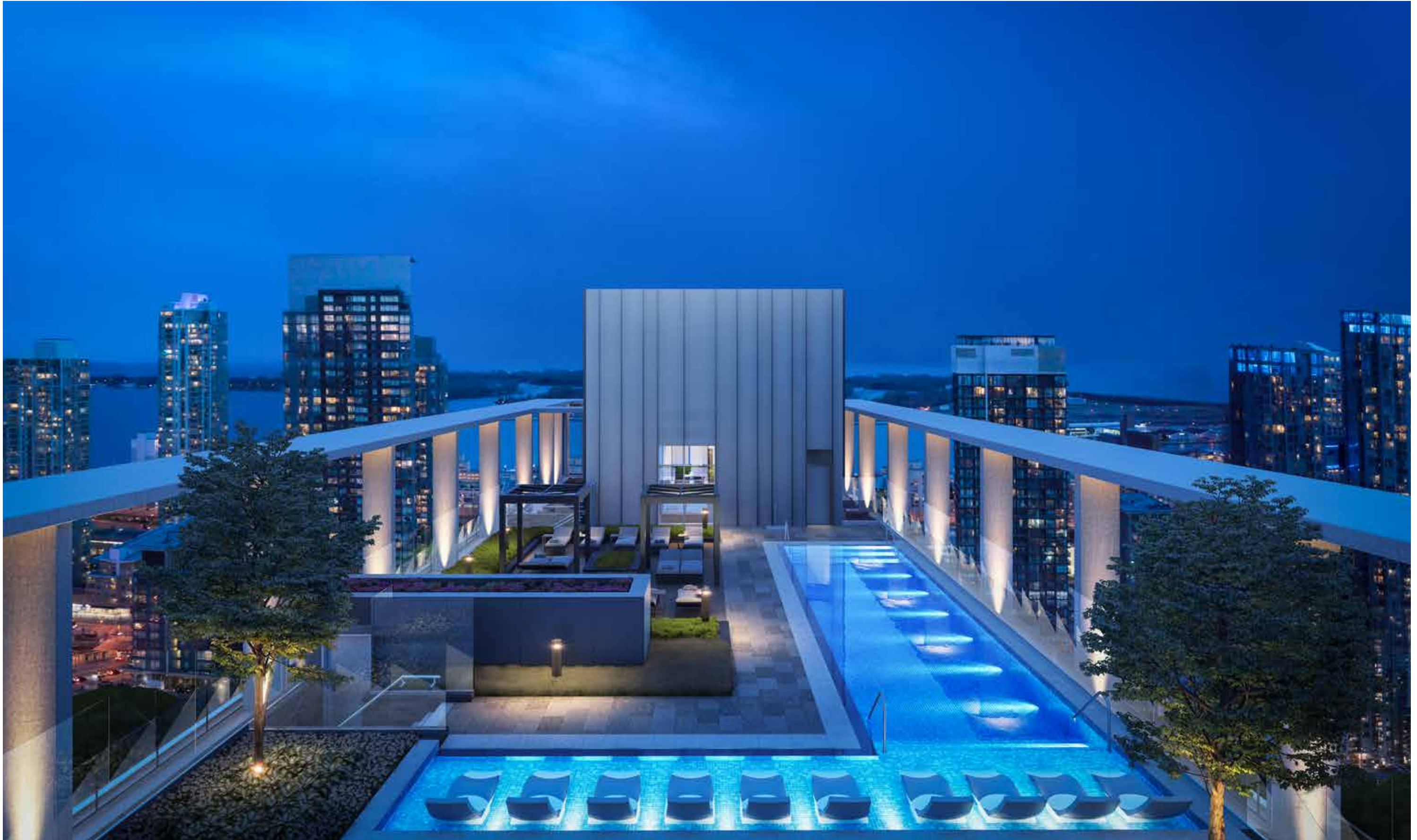
Multimedia Lounge



Outdoor Lounge



Terrace



Rooftop Pool



CLASSIC SERIES II

CLASSIC SERIES II

Anchoring the southwest corner of The Well, Classic II is a stunning, modern building designed to showcase the melding of leading-edge finishes and features with comfort and convenience. The glass and stone-clad residences sits atop a gracefully designed podium that pays tribute to the neighbourhood's heritage.





Entrance



Lobby



Dining Room



Party Room



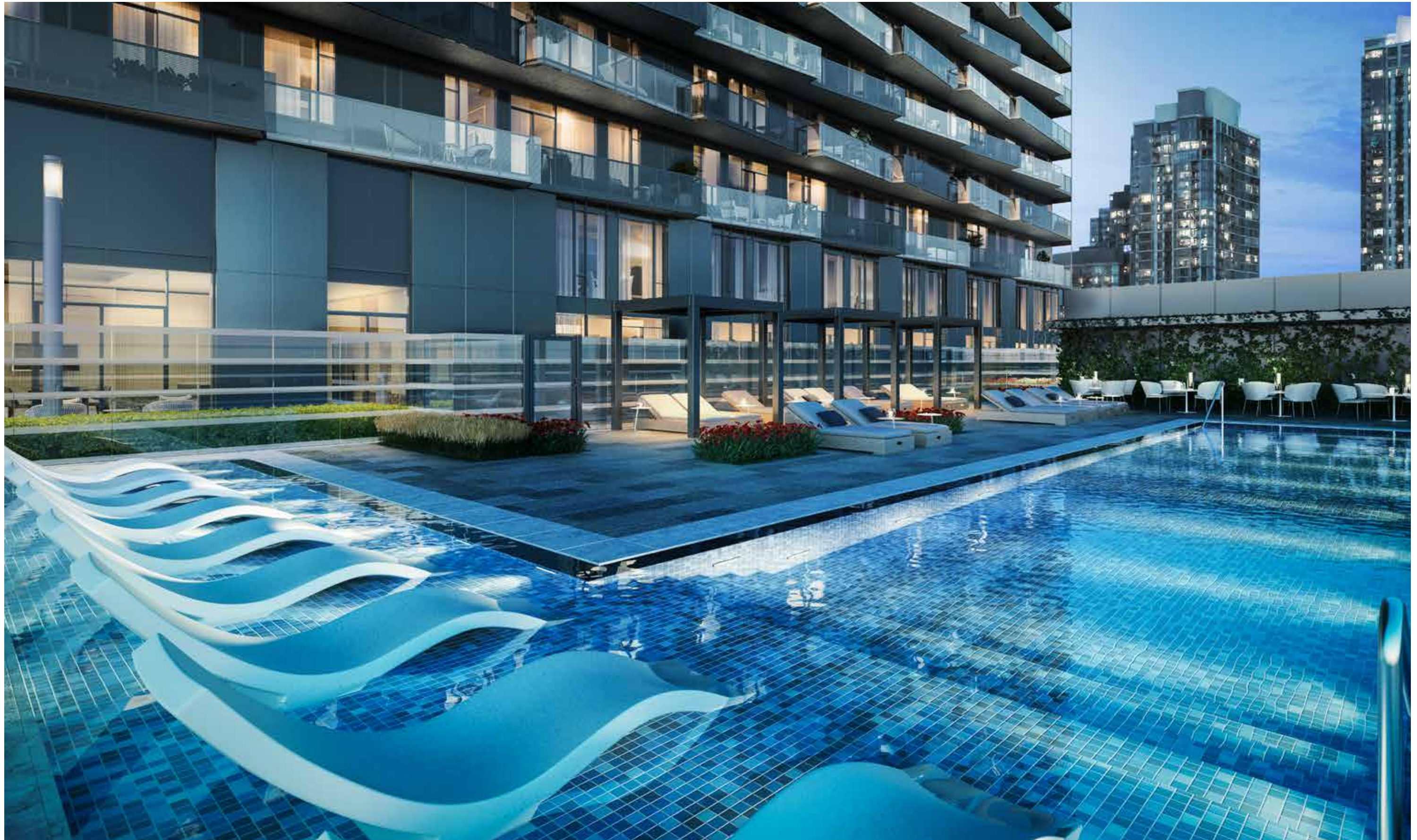
Fitness Room



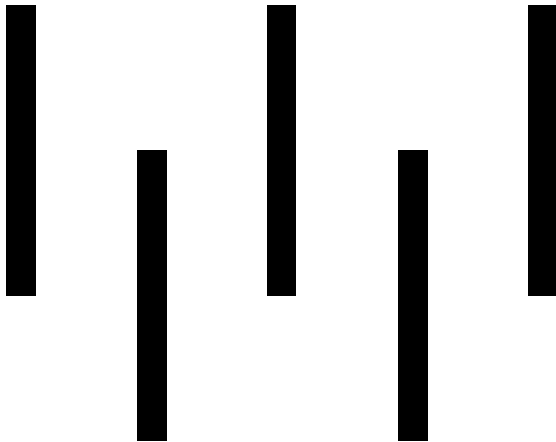
Terrace



Outdoor Lounge



Terrace Pool



SIGNATURE SERIES

SIGNATURE SERIES

The Well Signature Series condominium is a triumph of design. Located on Wellington Street, this luxury 98-suite boutique condo is an escape from your everyday. Generously sized, terraced suites overlook the new grand promenade below, blending with the street's historic facades. Discover luxurious amenities and true exclusivity, starting from \$1.5 Million.





Lobby

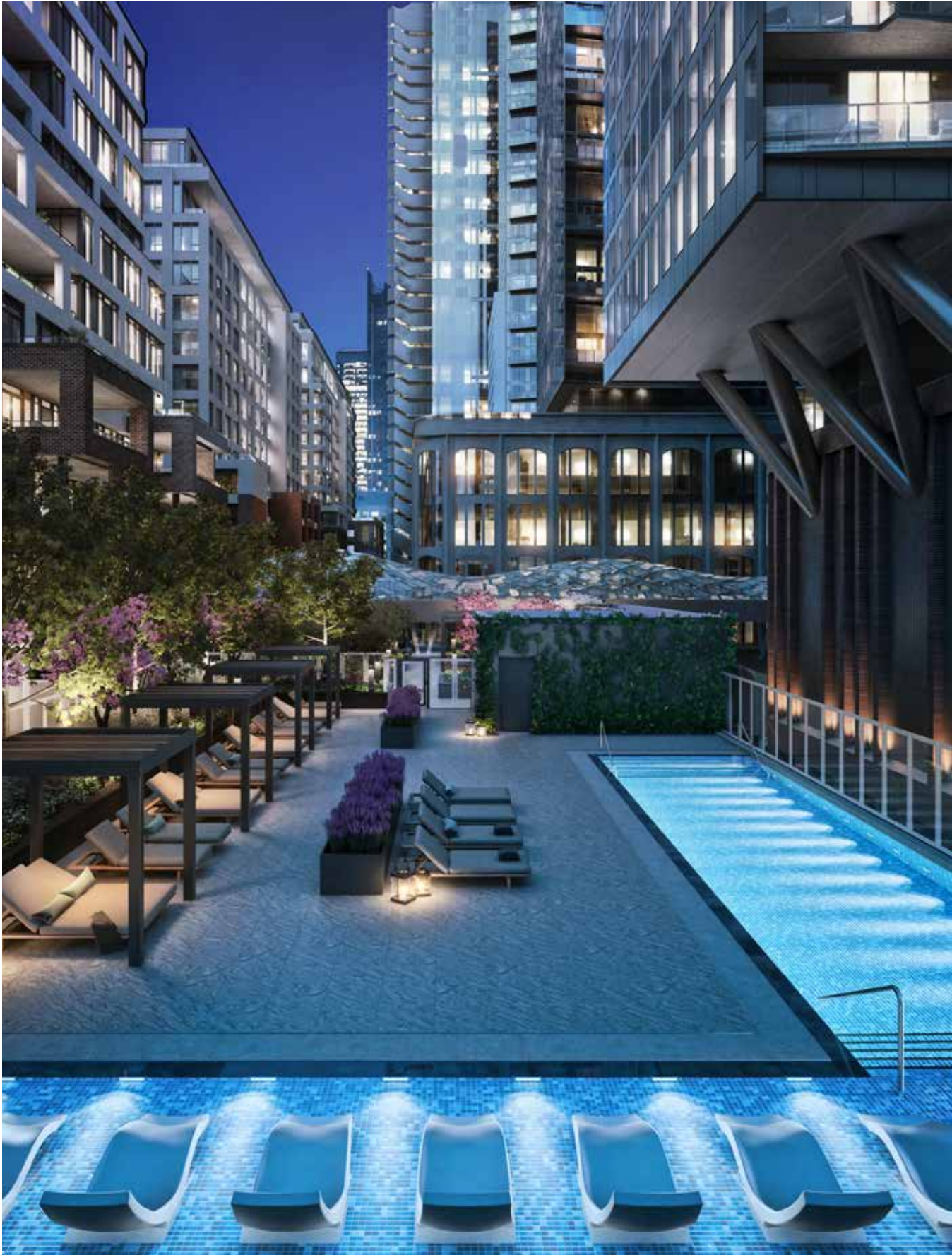




Fitness Room



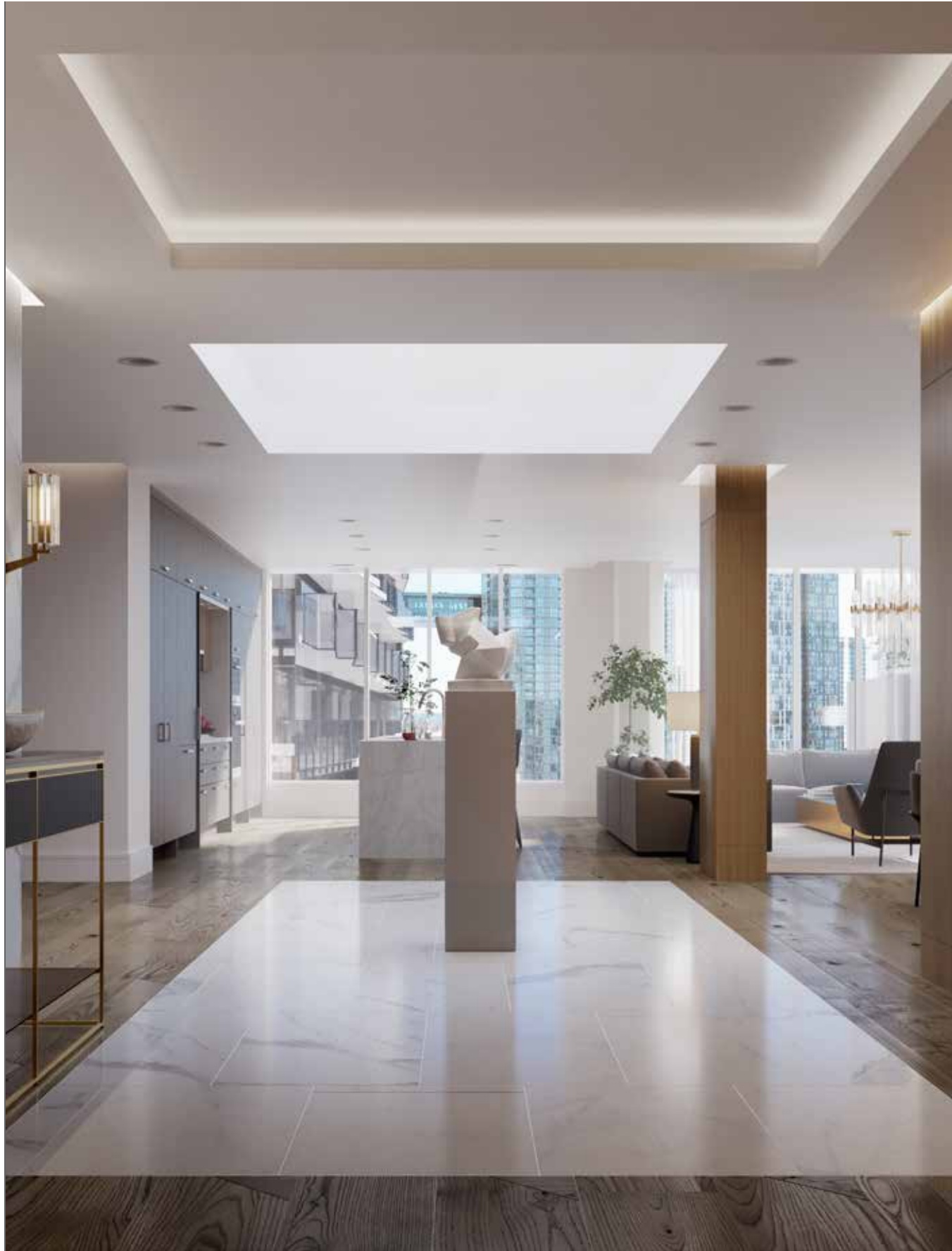
Entertainment Lounge



Terrace Pool



Terrace Pool



Penthouse Entrance



Penthouse Living



Penthouse Dining

Innovation



A leader in condominium living for 85 years, Tridel is dedicated to innovation, and leads the way in sustainable building. Tridel is committed to building communities that are environmentally responsible, energy efficient, healthy, and technologically state of the art.



Tridel Connect™

Tridel Connect™ makes everyday living simpler. From convenient features such as hands-free entry, automated parcel delivery, and smartphone access to your home, we're bringing it all together for a better living experience. Creating homes built for the innovations of today and prepared for those of tomorrow.

Control your home, from anywhere.

See who's at your door, adjust the temperature in your home, call the front desk, set the alarm, check the weather, and get building updates – all from your in-suite wall pad or the smartphone app. It's that easy.

Lightning-fast internet.

Stay connected with 1GB ultra high-speed internet included in your suite, and in the lobby and common areas. This amenity is conveniently bundled along with your utilities in your maintenance fees.



Innovation at The Well



Innovation at The Well



Entering your suite.

No more searching for your keys. Enjoy convenient digital access to your home.

Full bars, everywhere.

Our extensive cellular antenna network from the ground floor all the way to the penthouse ensures that “no signal” are two words you’ll never hear again. So go ahead, FaceTime.

Parcel delivery lockers.

Enjoy 24/7 direct access to your parcels moments after they are delivered, with a private and sophisticated parcel delivery locker system. You’ll receive a digital notification that your package is ready and waiting to be picked up.

Letting guests in.

Expecting company? Let Tridel Connect™ show you who is calling with live, one-way video from the lobby or parking garage. Answer their call and grant your guest access with a tap on your wall pad or your phone.

Peace of mind at home.

Arm the alarm from your wall pad or smartphone, or select the “stay” function, allowing you to set the alarm while remaining at home. If activated, both you and the front desk will be notified.

Move through the building with ease.

As a resident, your smartphone will be your access pass to the building, allowing you to unlock the doors to the private common areas and amenity spaces as you approach.



Innovation at The Well

The Lobby

Tridel's 8,000 Sq.Ft. branded design studio. The Lobby offers an immersive experience like no other. With innovative VR, guided tours, smart home innovations and a selection of real-life finishes, The Lobby is designed for hands-on interactivity. In-house Design Consultants walk homeowners through the latest trends in interiors, during one-on-one consultations.



The Well LEEDs the way.

As the largest builder of sustainable condominiums, Tridel is committed to building communities that are environmentally-responsible, energy-efficient, and healthy places to live. Tridel Built Green Built for Life® communities are high performing, meaning they use less energy to run while providing superior comfort to the homeowner. In turn, homeowners pay less money to operate the building and their own condominium suites.

The Well is pursuing LEED®* (Leadership in Energy and Environmental Design) certification. From landscaping to water efficiency, energy savings to building materials – we thought of everything to make this happen, so you can enjoy living guilt-free green.



WATER

The Well features low-flow plumbing fixtures that reduce potable water consumption up to 50%. Plus, storm water cisterns capture rain for the building's plants, which are all either drought tolerant or native plantings.



ENERGY

Suites feature Energy Star appliances and ERVs (energy recovery ventilators) to help you save up to 60% on energy, while improving indoor air quality.



MATERIALS

A portion of our construction materials contains recycled content or have been locally sourced, and all of our paints and adhesives are low VOC. Plus, we aim to recycle or divert at least 75% of our construction waste.



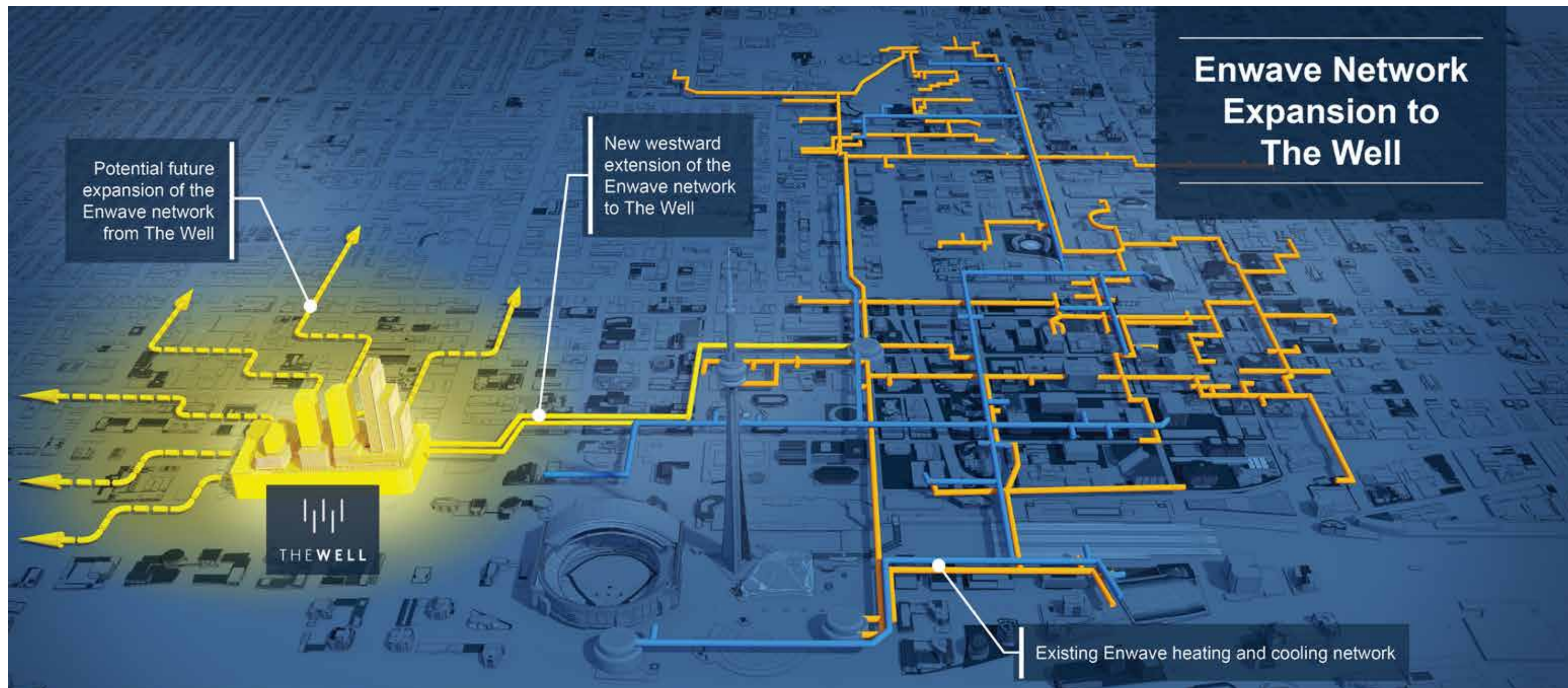
ELECTRIC VEHICLE ACCOMMODATIONS

We offer access to electric vehicle charging stations, because we know you care about the environment as much as we do.

*Vendor is not guaranteeing (nor making any warranty a representation whatsoever) that the condominium building will, in fact, ultimately attain or achieve LEED certification or equivalent status. Tridel Built Green Built for Life is a registered Trademark of Tridel Corporation. Specifications subject to change without notice. E.&O.E. May 2019.

Innovation at The Well





Low-Carbon Living

The Well is literally built on sustainability. Enwave is extending its existing Deep Lake Water Cooling and hot water distribution networks by building a new energy storage facility underneath The Well. This installation gives The Well and surrounding communities the ability to access the first low-carbon, resilient cooling and heating option for the downtown west community.



EIGHTY FIVE YEARS AGO IN 1934 JACK DELZOTTO BEGAN A LEGACY THAT CONTINUES TODAY. JACK'S PHILOSOPHY WAS A SIMPLE ONE, **BUILD A BETTER HOME**. TODAY WE SEE THIS PASSION TO **INNOVATE** IN EVERYTHING WE DO. TO US, HOME IS SO MUCH MORE THAN BRICKS AND MORTAR, **IT'S A WAY OF LIFE**. IT CONNECTS YOU TO YOUR SURROUNDINGS AND ENRICHES YOUR LIFESTYLE. IT IS DESIGNED TO BE **SUSTAINABLE** AND TO REDUCE THE FOOTPRINT LEFT ON OUR EARTH. IT IS CONSTRUCTED TO LAST AND BE **ENJOYED FOR GENERATIONS**. IT IS THOUGHTFUL, TAKING INTO CONSIDERATION OUR **NEIGHBOURS AND COMMUNITIES**. IT IS INNOVATIVE, USING THE MOST MODERN TECHNOLOGY TO MAKE LIFE A LITTLE EASIER. **IT IS CARING**, ENSURING THE MOST MEMORABLE EXPERIENCE IN BUYING, **PERSONALIZING**, AND MOVING INTO YOUR HOME. IT IS GIVING, THROUGH OUR MANY CHARITIES, COMMUNITY OUTREACH AND SOCIAL PROGRAMS. **IT IS THANKFUL**, FOR THE MANY AWARDS OF DISTINCTION BESTOWED ON US AT THE 39TH BILD AWARDS. **HOME BUILDER OF THE YEAR. GREEN BUILDER OF THE YEAR. THE STEPHEN DUPUIS SOCIAL RESPONSIBILITY AWARD. BEST CUSTOMER CARE.**

TRIDEL®
BUILT FOR LIFE



THEWELL™

YOUR FIRST ACCESS TO TORONTO PRE-CONSTRUCTION CONDOS

INVESTING IN TORONTO CONDOS?
INSPECT TOP CONDOS DEALS

NEWGTA
CONDOS.com

10376 Yonge St., Unit 306, Richmond Hill, ON. L4C 3B8
416.832.8343 | info@newgtacondos.com

