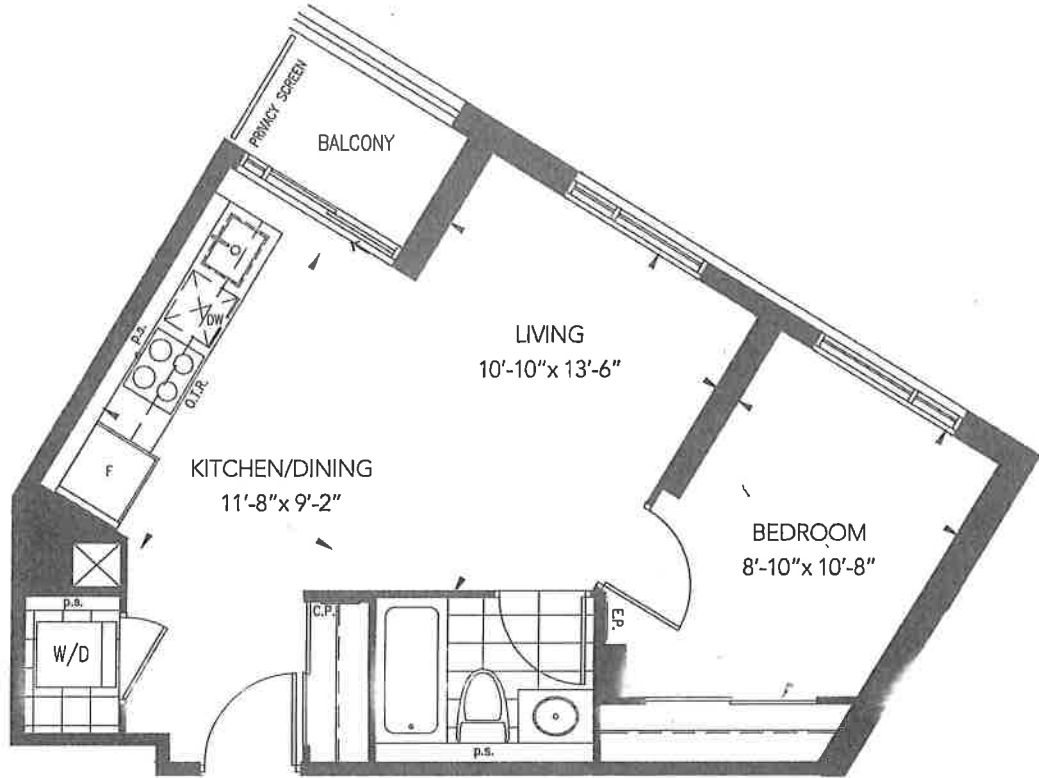




THE MACKENZIE
BOUTIQUE CONDOS IN HAPLE

1 BEDROOM – 1C
580 SQ.FT.



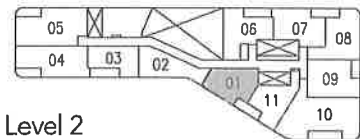
UNITS 401, 601



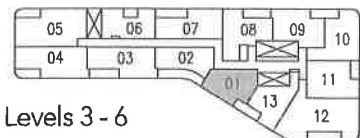
UNIT 201



UNITS 301, 501



Level 2



Levels 3 - 6



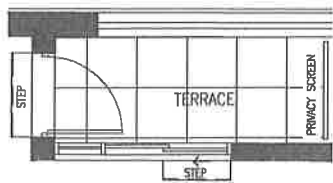
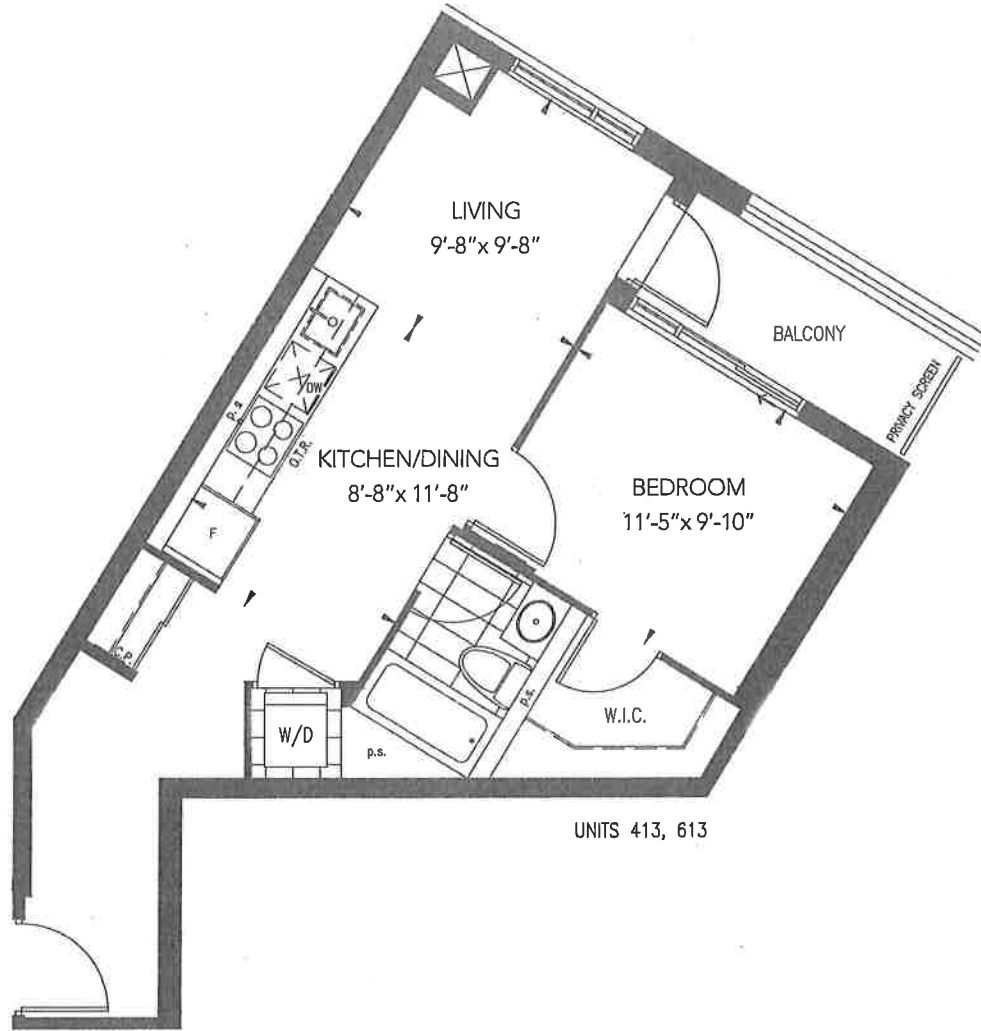
Pemberton
Everything a home should be

Dimensions, specifications, layouts and materials are approximate only and are subject to change without notice. Tile patterns may vary. Window size and location may vary. Actual usable floor space may vary from stated floor area. Balcony/terrace/patio area is approximate and not included in net suite area.

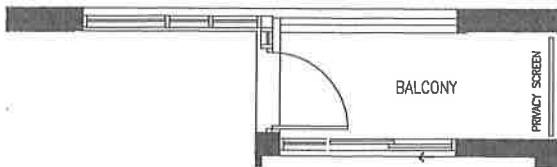


THE MACKENZIE
BOUTIQUE CONDOS IN HAPLE

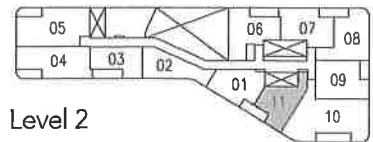
1 BEDROOM – 1E
610 SQ.FT.



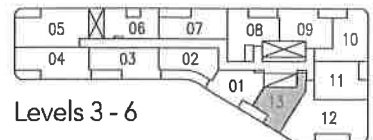
UNIT 211



UNITS 313, 513



Level 2



Levels 3 - 6



Pemberton

Everything a home should be

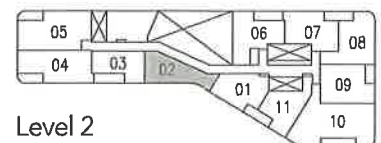
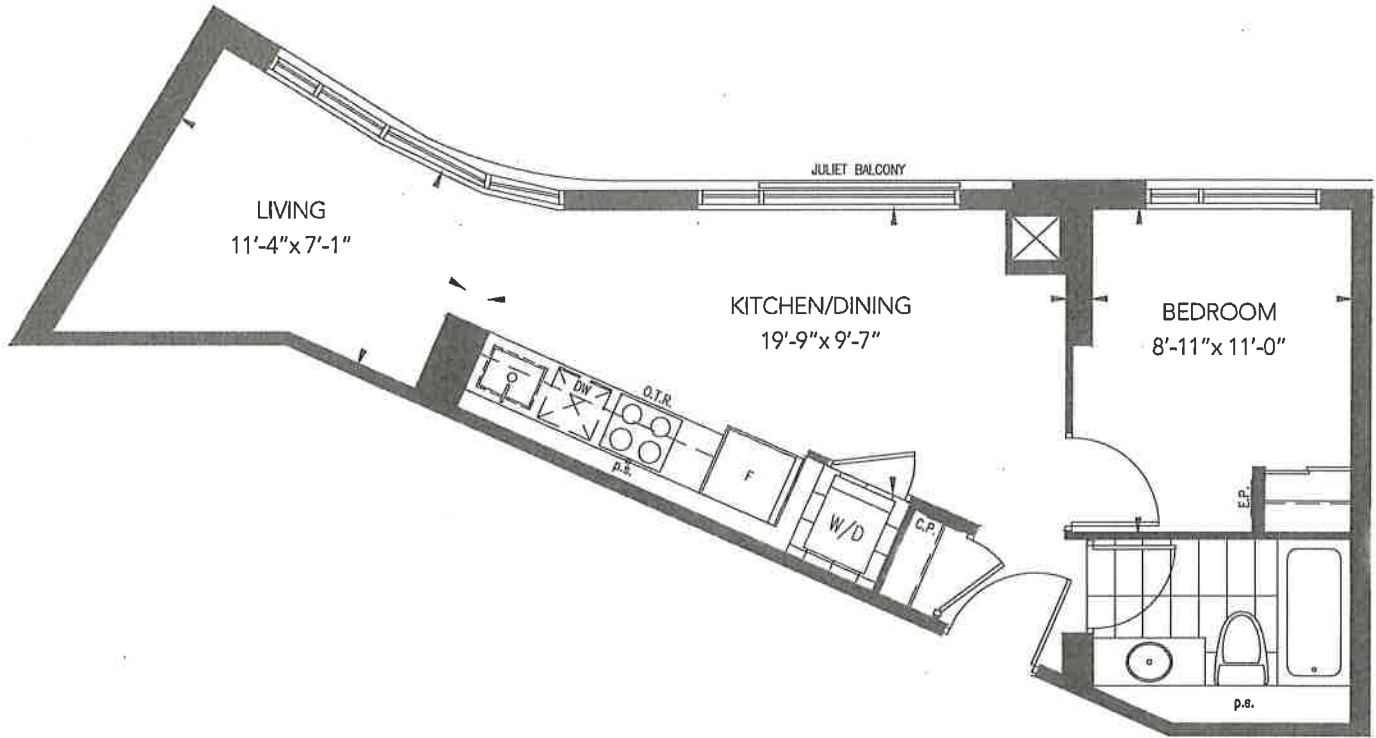
Dimensions, specifications, layouts and materials are approximate only and are subject to change without notice. Tile patterns may vary. Window size and location may vary. Actual usable floor space may vary from stated floor area. Balcony/terrace/patio area is approximate and not included in net suite area.



THE MACKENZIE
BOUTIQUE CONDOS IN NAPLE



1 BEDROOM – 1F
585 SQ.FT.



Level 2



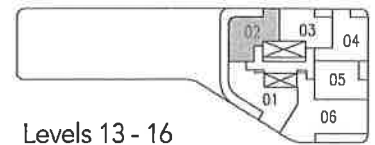
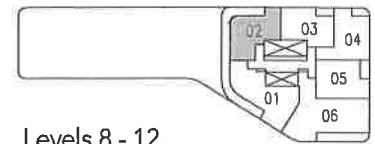
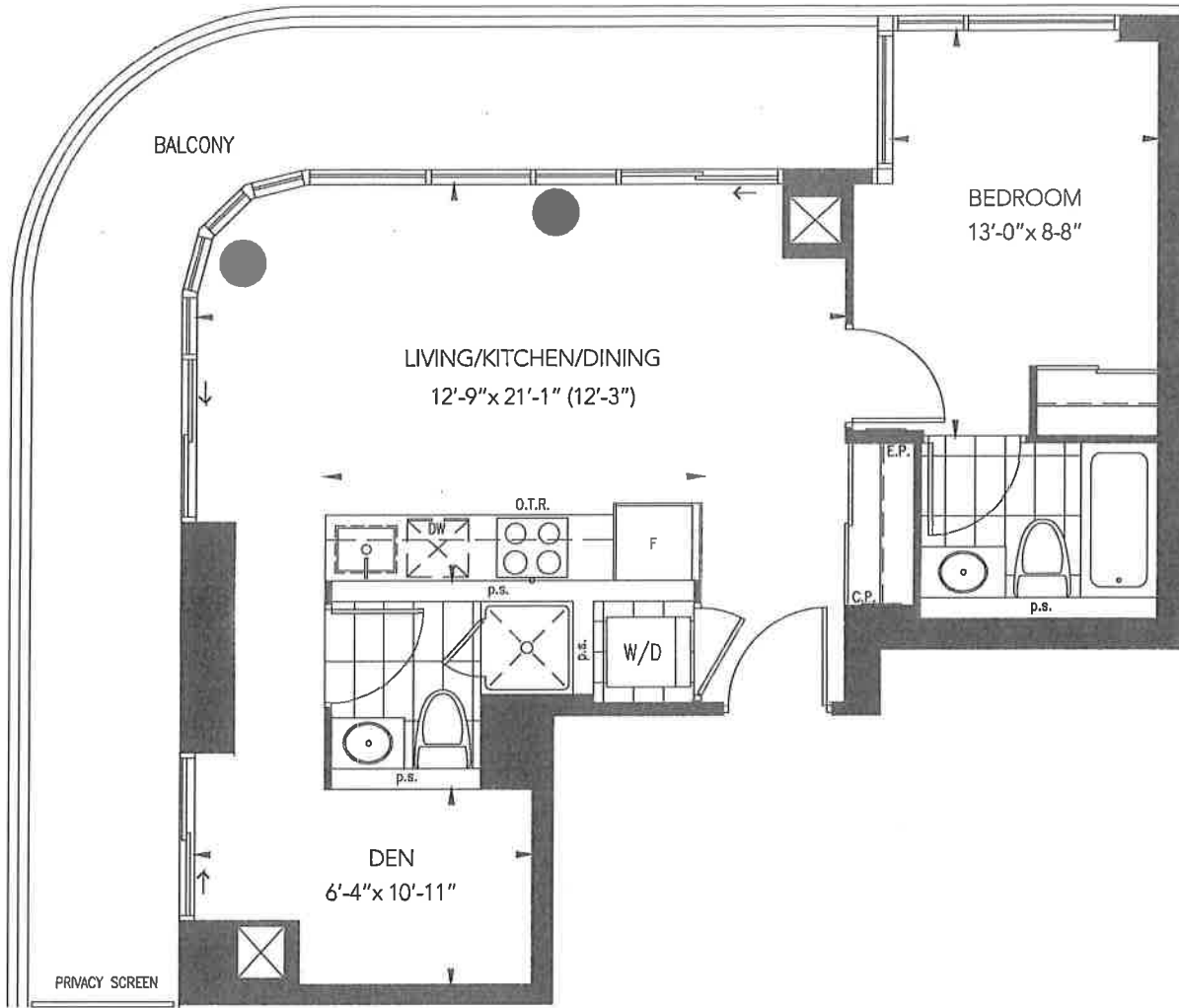
Pemberton
Everything a home should be

Dimensions, specifications, layouts and materials are approximate only and are subject to change without notice. Tile patterns may vary. Window size and location may vary. Actual usable floor space may vary from stated floor area. Balcony/terrace/patio area is approximate and not included in net suite area.



THE MACKENZIE
BOUTIQUE CONDOS IN MAPLE

1 BEDROOM + DEN – 1D-A
699 SQ.FT.



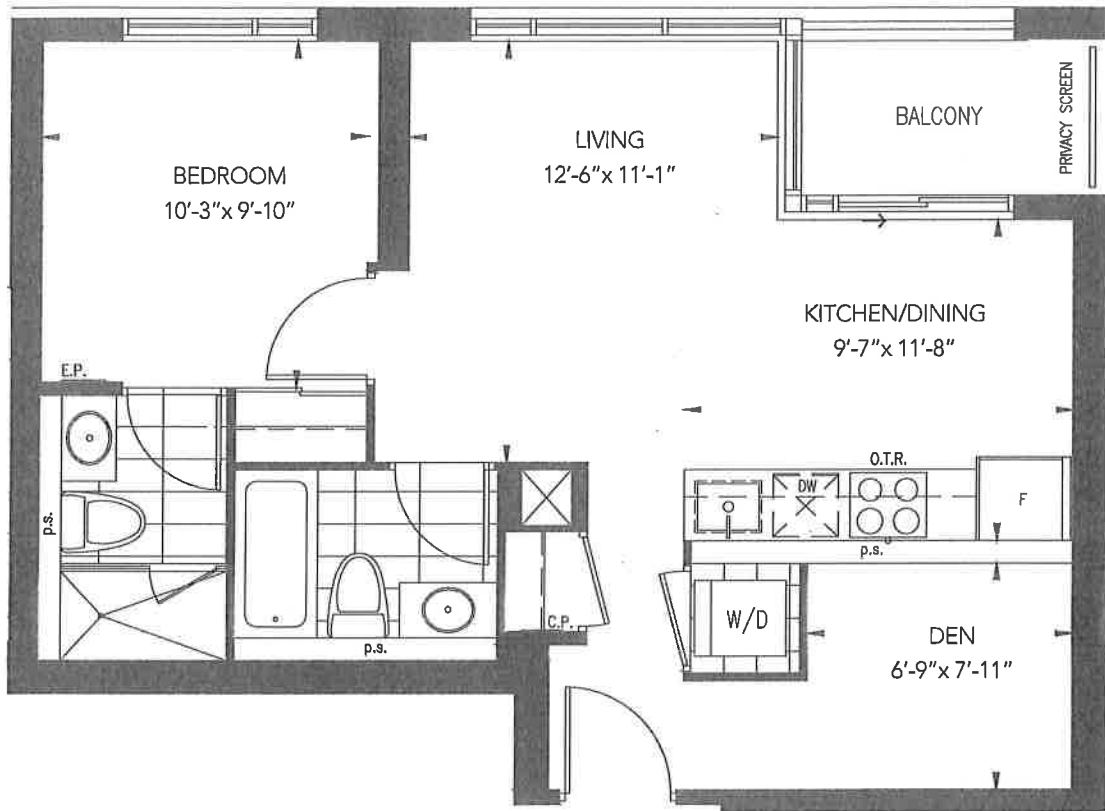
Pemberton
Everything a home should be

Dimensions, specifications, layouts and materials are approximate only and are subject to change without notice. Tile patterns may vary. Window size and location may vary. Actual usable floor space may vary from stated floor area. Balcony/terrace/patio area is approximate and not included in net suite area.

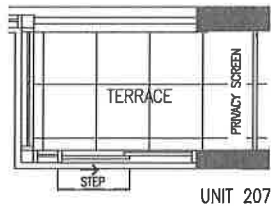


THE MACKENZIE
BOUTIQUE CONDOS IN MAPLE

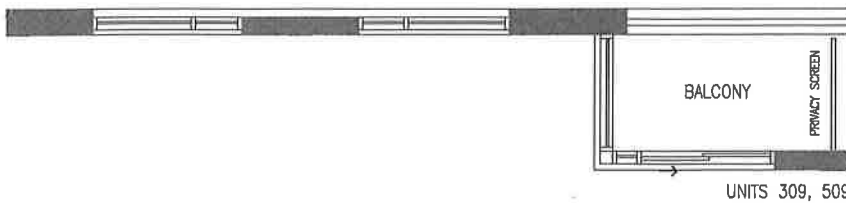
1 BEDROOM + DEN – 1D-B
680 SQ.FT.



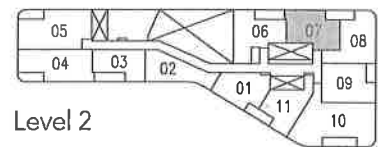
UNITS 409, 609



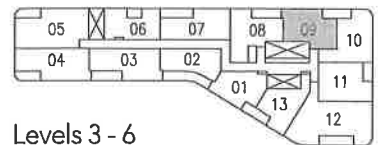
UNIT 207



UNITS 309, 509



Level 2



Levels 3 - 6



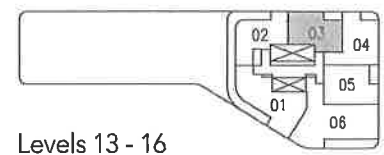
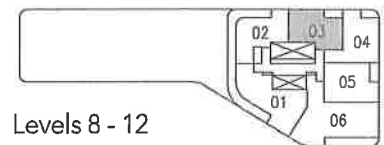
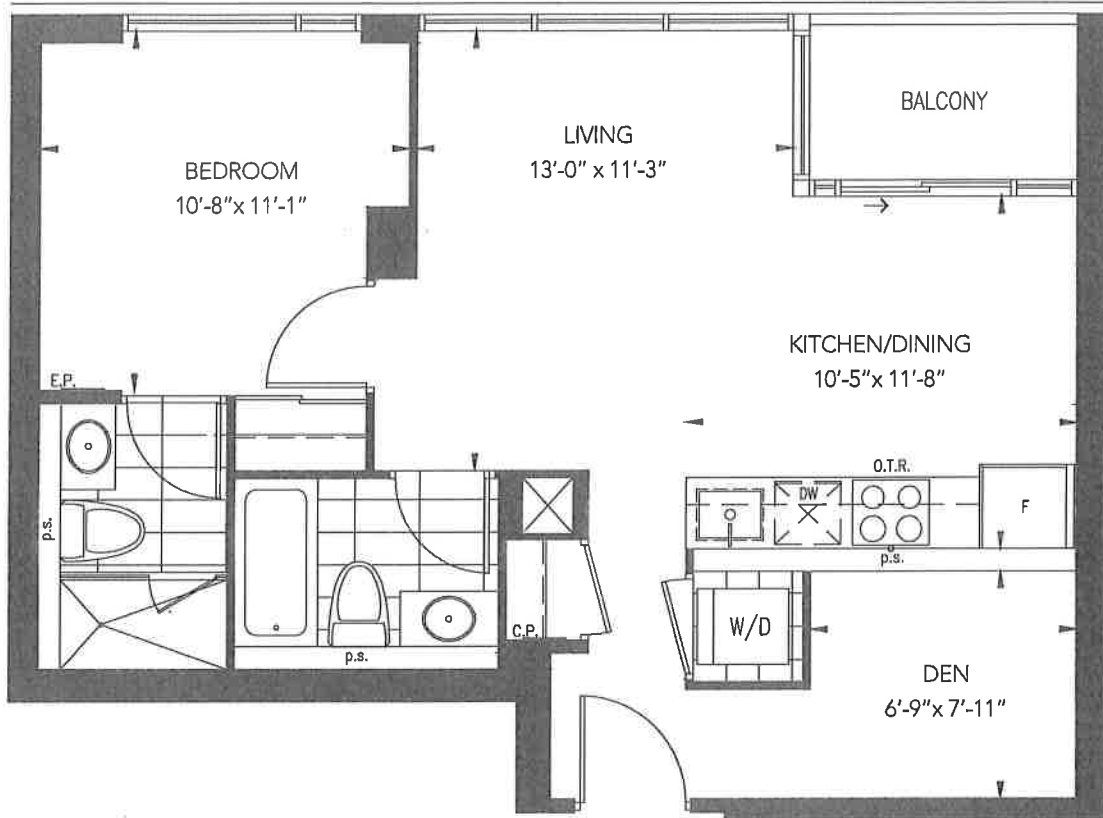
Pemberton
Everything a home should be

Dimensions, specifications, layouts and materials are approximate only and are subject to change without notice. Tile patterns may vary. Window size and location may vary. Actual usable floor space may vary from stated floor area. Balcony/terrace/patio area is approximate and not included in net suite area.



THE MACKENZIE
BOUTIQUE CONDOS IN MAPLE

1 BEDROOM + DEN – 1D-B1
680 SQ.FT.



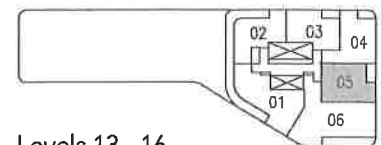
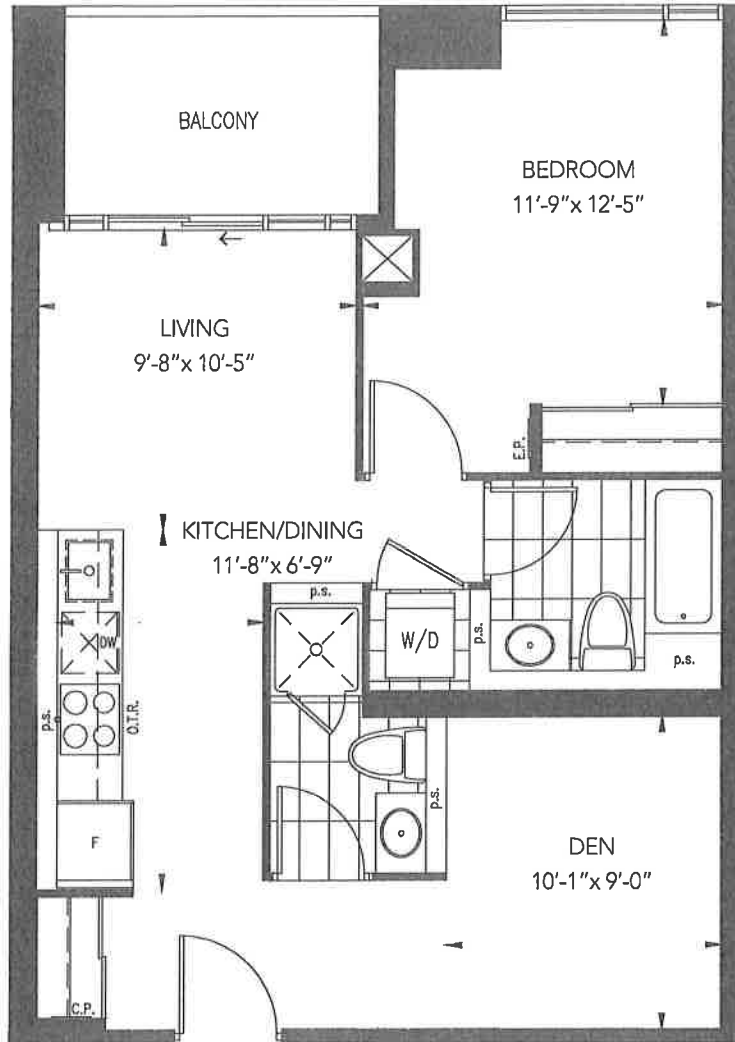
Pemberton
Everything a home should be

Dimensions, specifications, layouts and materials are approximate only and are subject to change without notice. Tile patterns may vary. Window size and location may vary. Actual usable floor space may vary from stated floor area. Balcony/terrace/patio area is approximate and not included in net suite area.



THE MACKENZIE
BOUTIQUE CONDOS IN MAPLE

1 BEDROOM + DEN - 1D-G
699 SQ.FT.



Levels 13 - 16



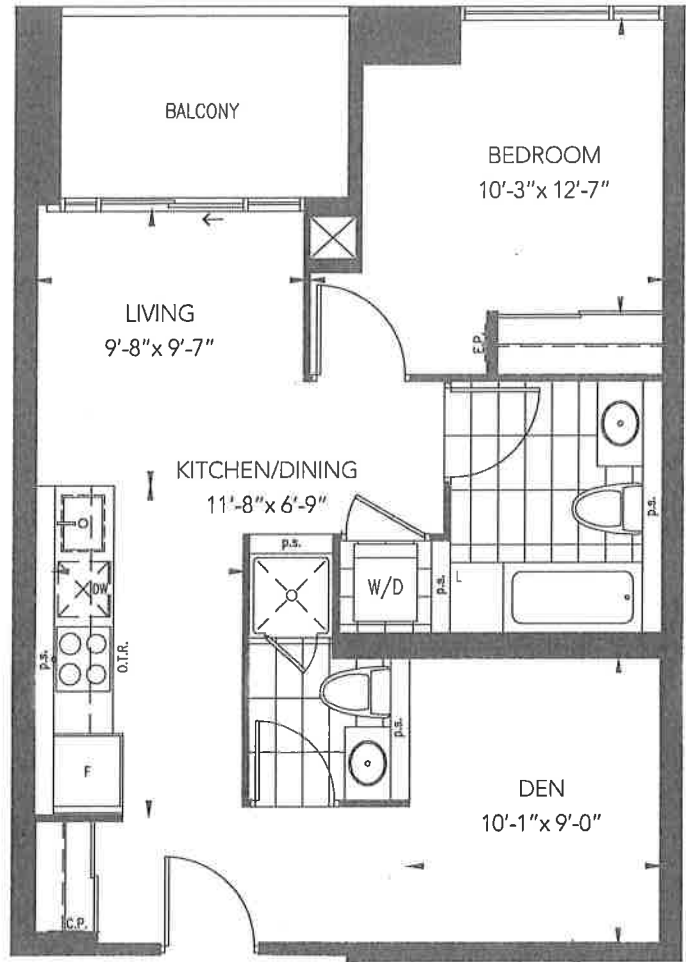
Pemberton
Everything a home should be

Dimensions, specifications, layouts and materials are approximate only and are subject to change without notice. Tile patterns may vary. Window size and location may vary. Actual usable floor space may vary from stated floor area. Balcony/terrace/patio area is approximate and not included in net suite area.

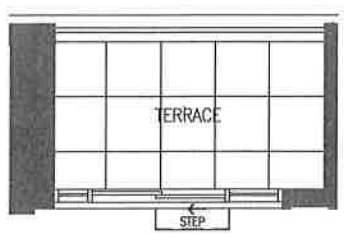
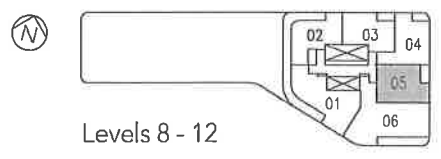
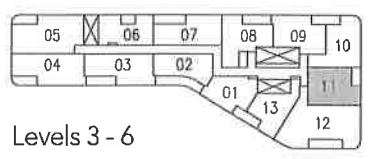
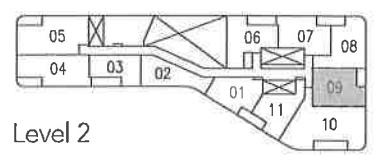


THE MACKENZIE
BOUTIQUE CONDOS IN MAPLE

1 BEDROOM + DEN – 1D-G (BF)
699 SQ.FT.



UNITS 311, 411, 511, 611, 905, 1005, 1105, 1205



UNIT 209, 805



Pemberton
Everything a home should be

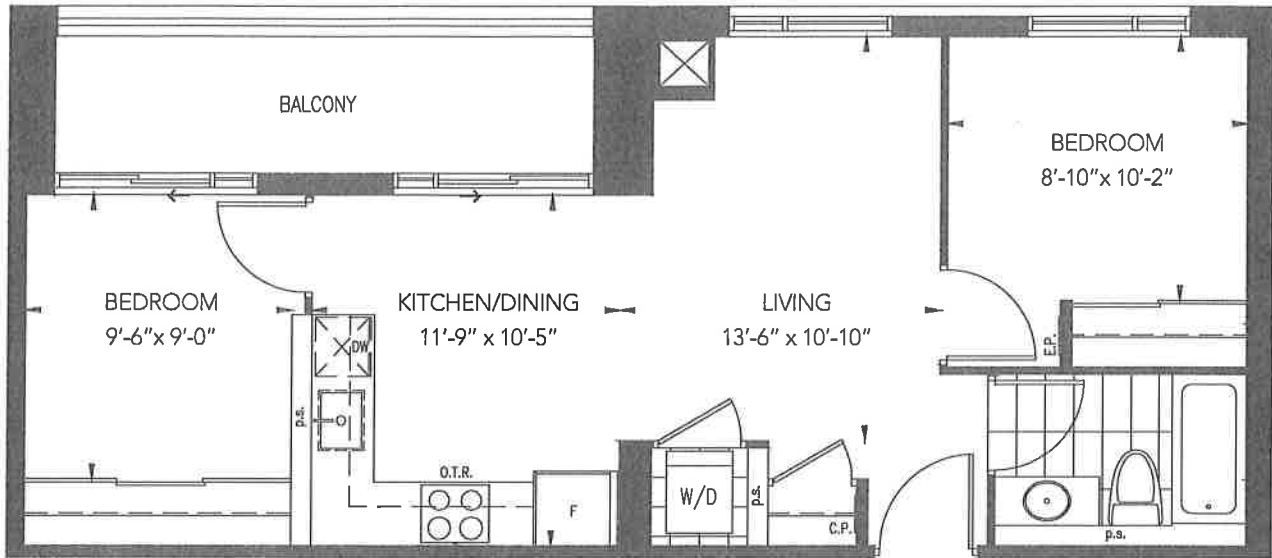
Dimensions, specifications, layouts and materials are approximate only and are subject to change without notice. Tile patterns may vary. Window size and location may vary. Actual usable floor space may vary from stated floor area. Balcony/terrace/patio area is approximate and not included in net suite area.



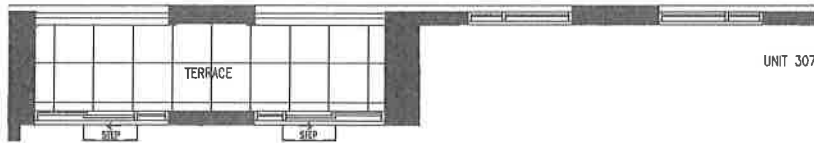
THE MACKENZIE

BOUTIQUE CONDOS IN MAPLE

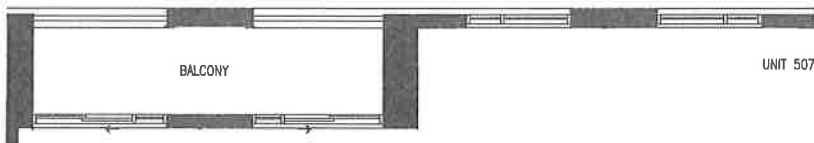
2 BEDROOMS – 2A 680 SQ.FT.



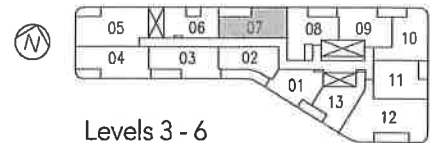
UNITS 407, 607



UNIT 307



UNIT 507



Levels 3 - 6



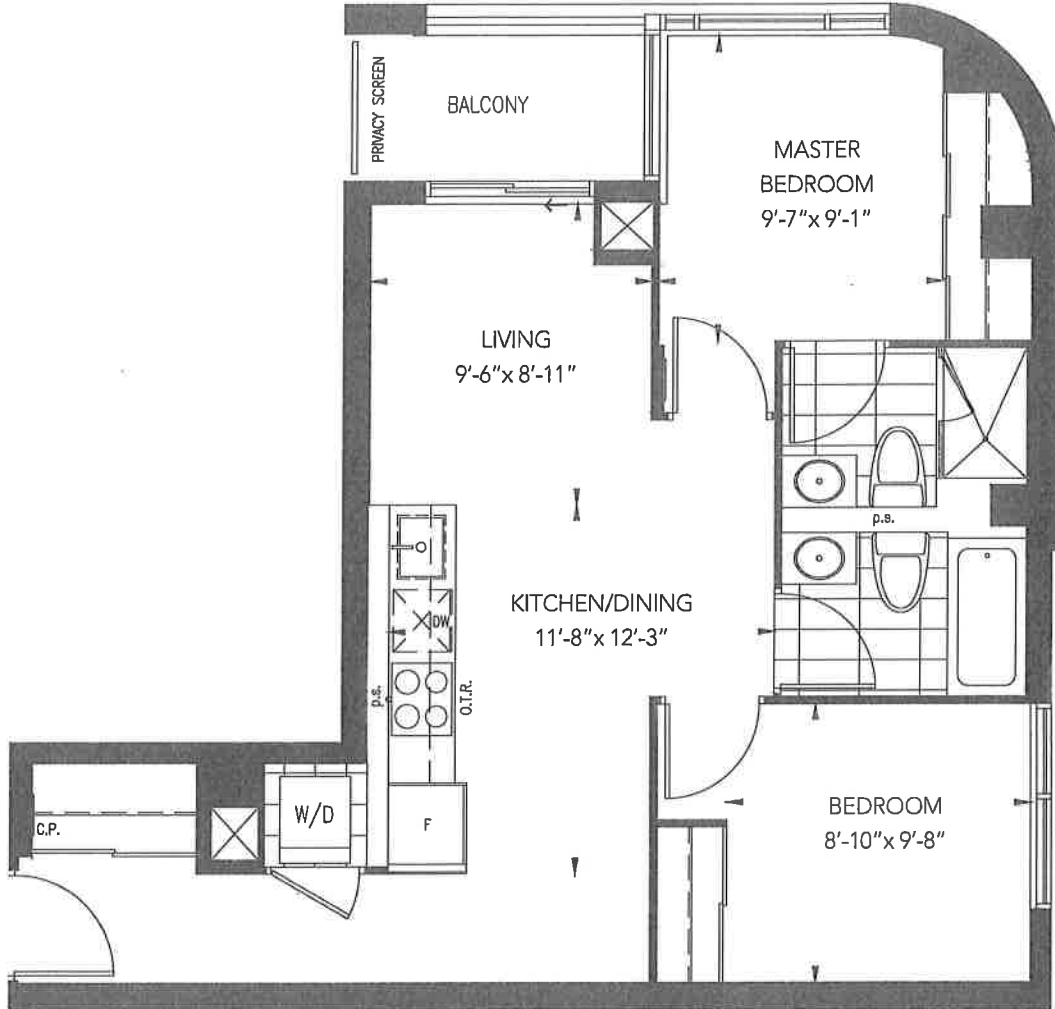
Pemberton
Everything a home should be

Dimensions, specifications, layouts and materials are approximate only and are subject to change without notice. Tile patterns may vary. Window size and location may vary. Actual usable floor space may vary from stated floor area. Balcony/terrace/patio area is approximate and not included in net suite area.

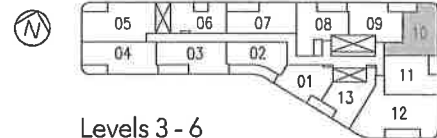
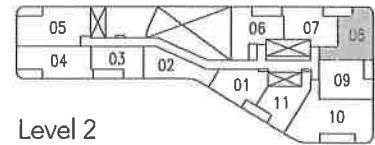
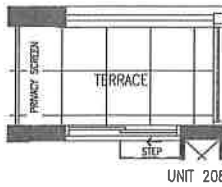


THE MACKENZIE
BOUTIQUE CONDOS IN MAPLE

2 BEDROOMS – 2B
760 SQ.FT.



UNITS 410, 610



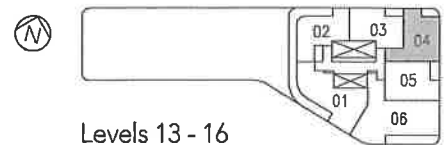
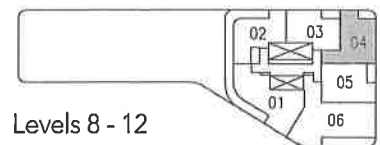
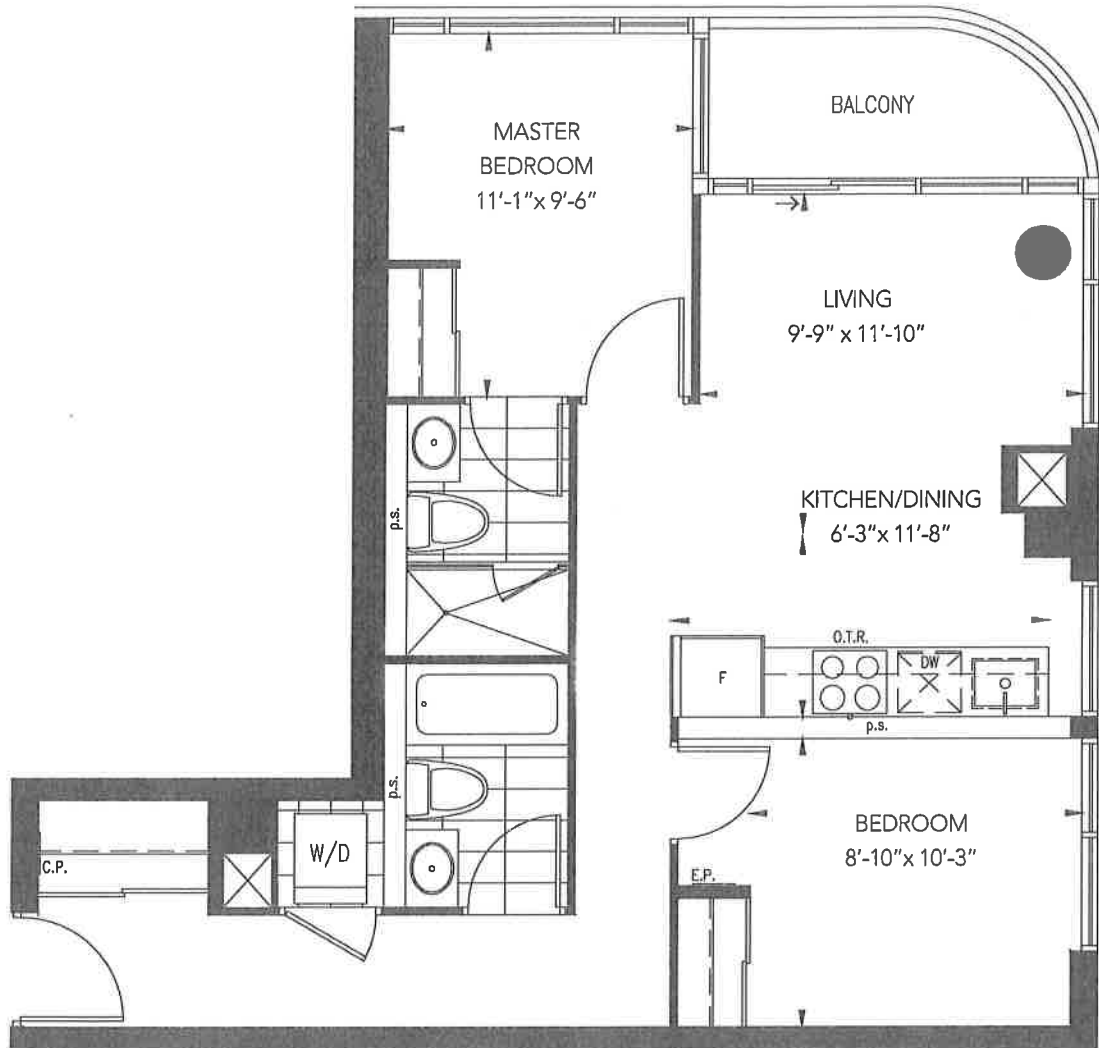
Pemberton
Everything a home should be

Dimensions, specifications, layouts and materials are approximate only and are subject to change without notice. Tile patterns may vary. Window size and location may vary. Actual usable floor space may vary from stated floor area. Balcony/terrace/patio area is approximate and not included in net suite area.



THE MACKENZIE
 BOUTIQUE CONDOS IN MAPLE

2 BEDROOMS – 2D
 750 SQ.FT.



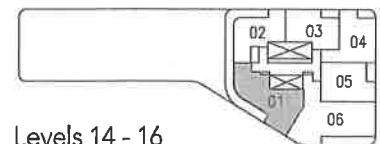
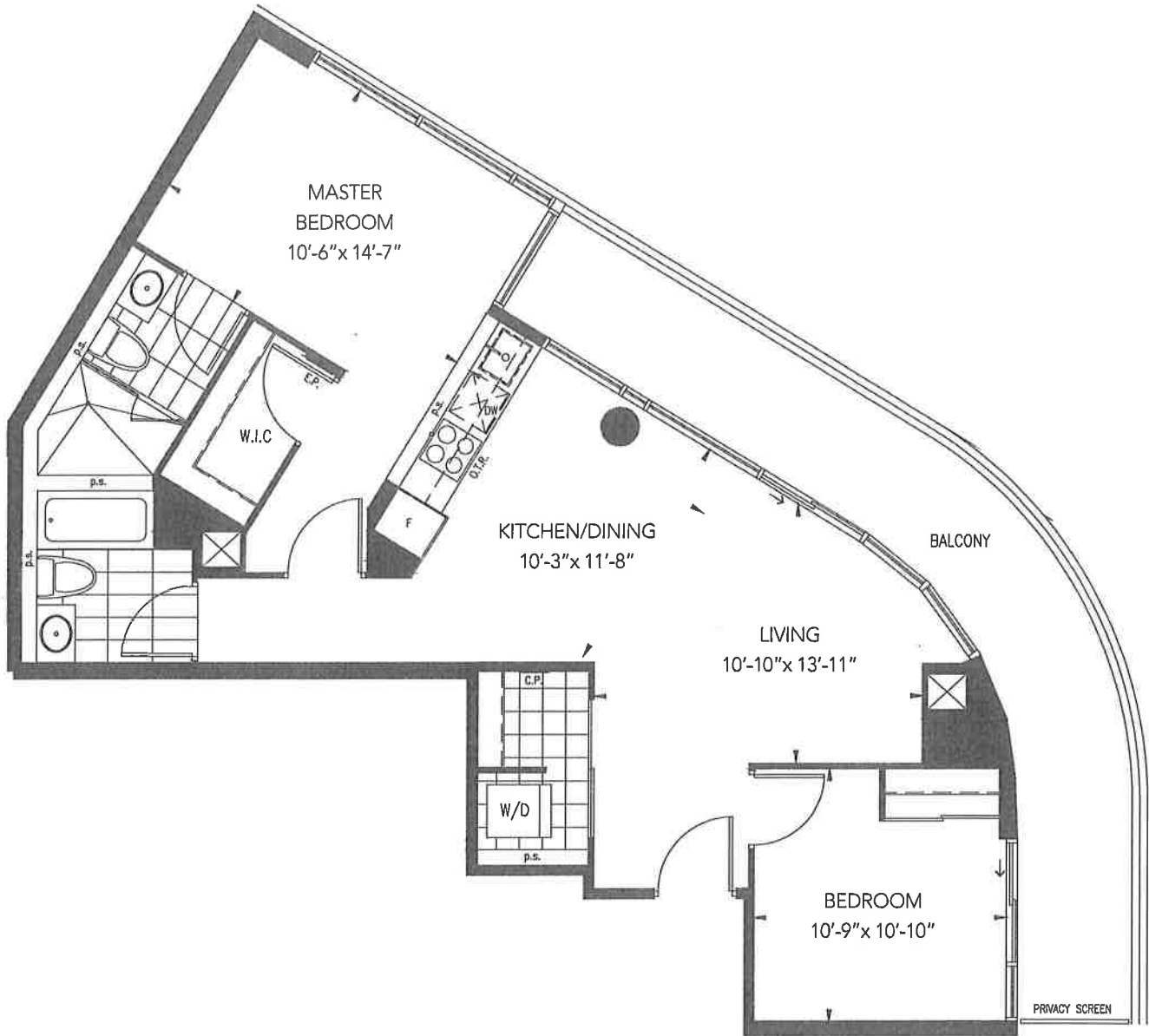
Pemberton
 Everything a home should be

Dimensions, specifications, layouts and materials are approximate only and are subject to change without notice. Tile patterns may vary. Window size and location may vary. Actual usable floor space may vary from stated floor area. Balcony/terrace/patio area is approximate and not included in net suite area.



THE MACKENZIE
BOUTIQUE CONDOS IN MAPLE

2 BEDROOMS – 2E
985 SQ.FT.



Levels 14 - 16



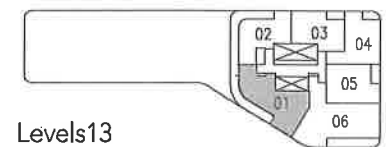
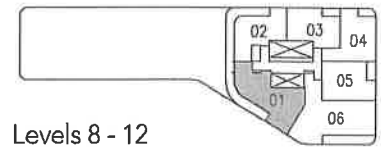
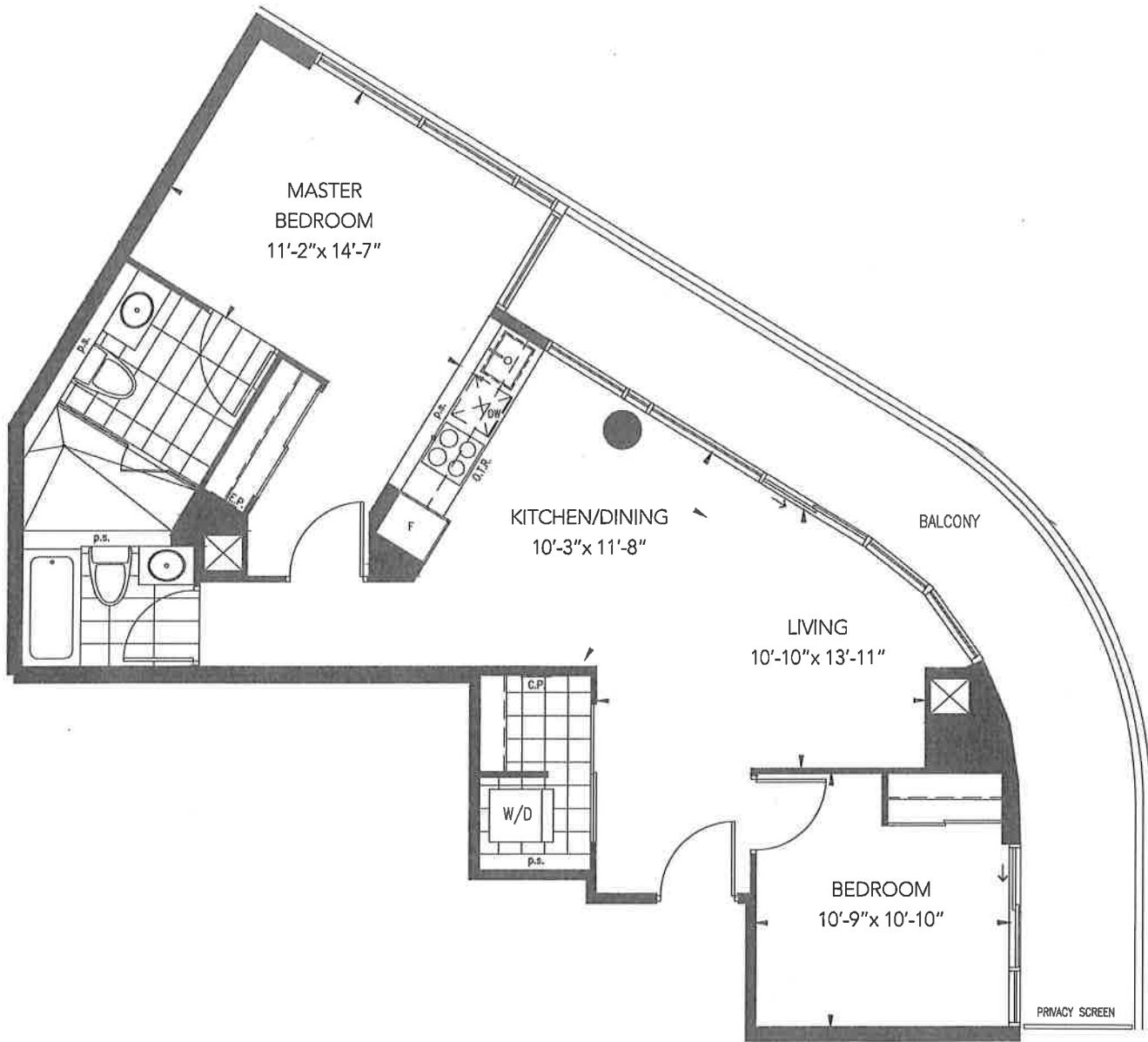
Pemberton
Everything a home should be

Dimensions, specifications, layouts and materials are approximate only and are subject to change without notice. Tile patterns may vary. Window size and location may vary. Actual usable floor space may vary from stated floor area. Balcony/terrace/patio area is approximate and not included in net suite area.



THE MACKENZIE
BOUTIQUE CONDOS IN MAPLE

2 BEDROOMS – 2E (BF)
985 SQ.FT.



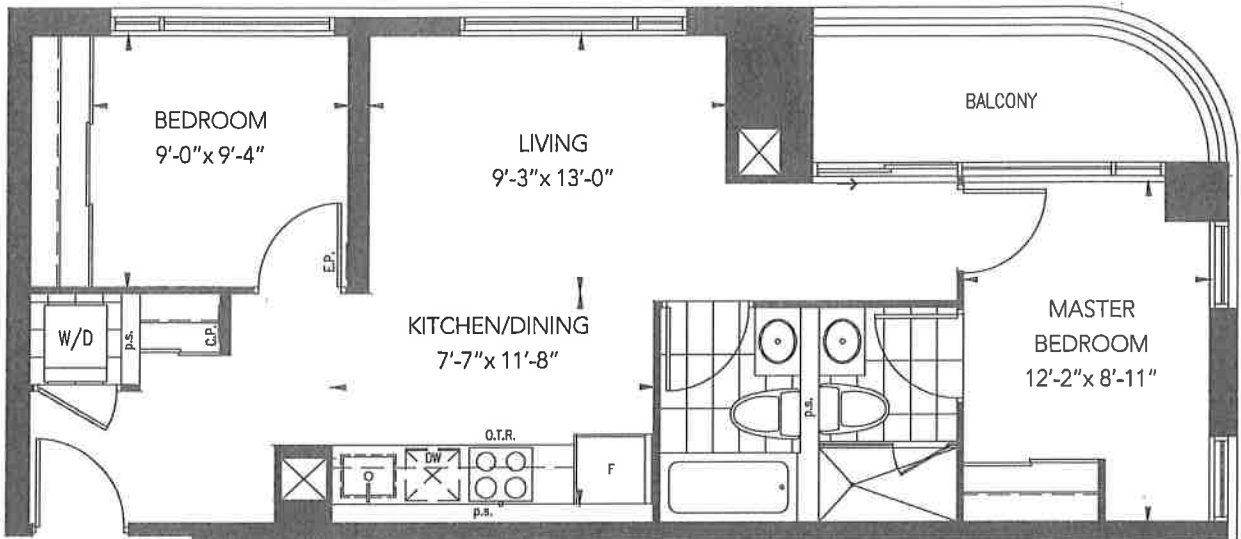
Pemberton
Everything a home should be

Dimensions, specifications, layouts and materials are approximate only and are subject to change without notice. Tile patterns may vary. Window size and location may vary. Actual usable floor space may vary from stated floor area. Balcony/terrace/patio area is approximate and not included in net suite area.

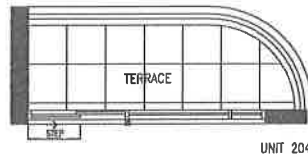


THE MACKENZIE
BOUTIQUE CONDOS IN NAPLE

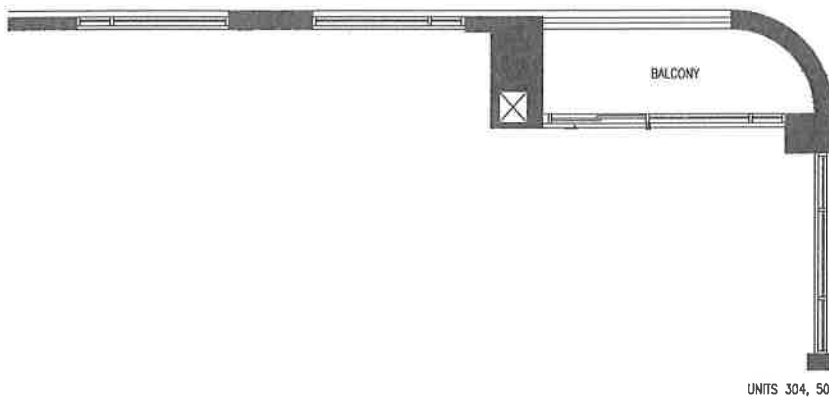
2 BEDROOMS – 2F
770 SQ.FT.



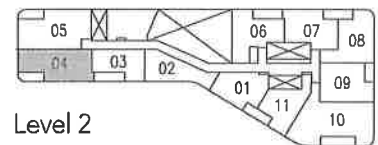
UNITS 404, 604



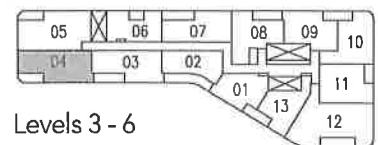
UNIT 204



UNITS 304, 504



Level 2



Levels 3 - 6



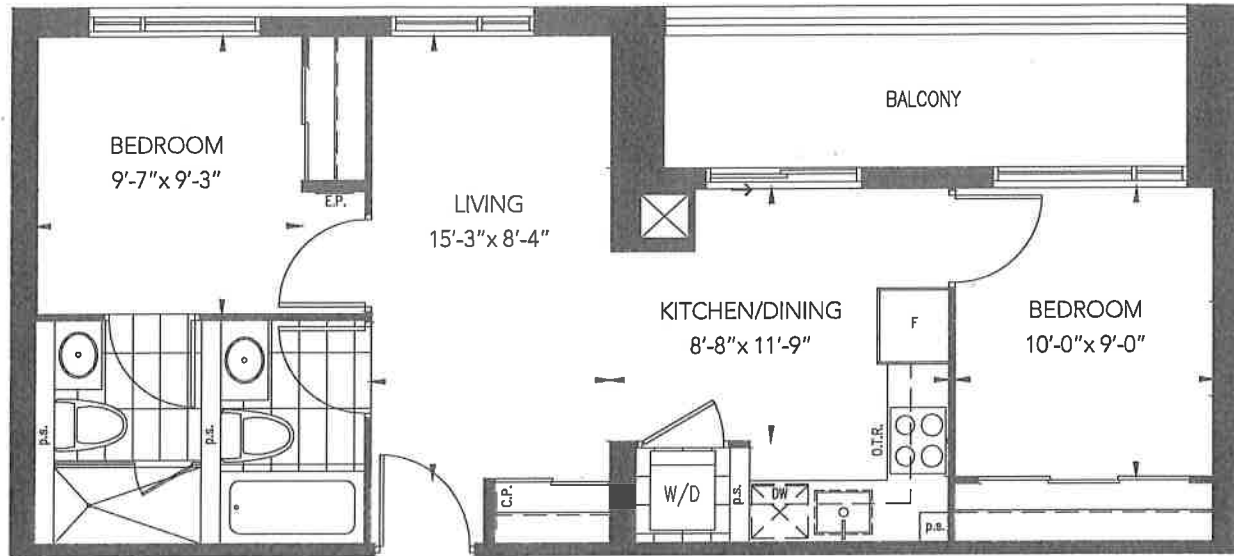
Pemberton
Everything a home should be

Dimensions, specifications, layouts and materials are approximate only and are subject to change without notice. Tile patterns may vary. Window size and location may vary. Actual usable floor space may vary from stated floor area. Balcony/terrace/patio area is approximate and not included in net suite area.

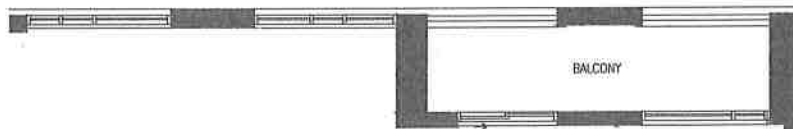


THE MACKENZIE
BOUTIQUE CONDOS IN MAPLE

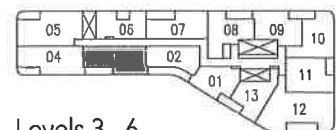
2 BEDROOMS – 2G
699 SQ.FT.



UNITS 403, 603



UNITS 303, 503



Levels 3 - 6



Pemberton
Everything a home should be

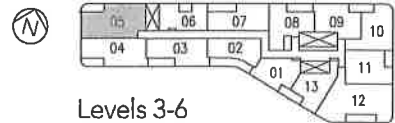
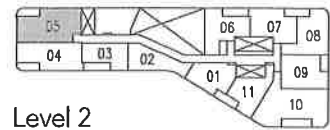
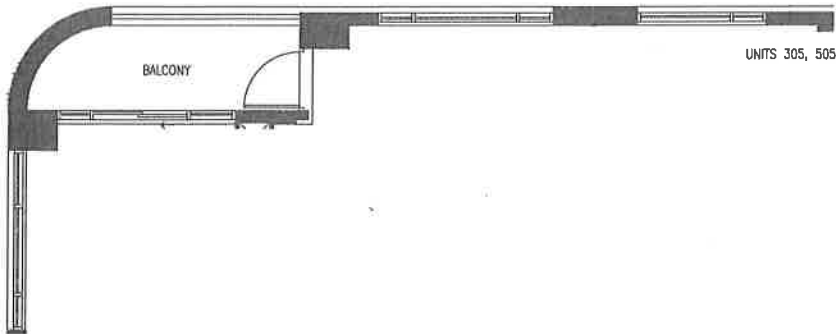
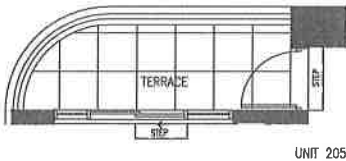
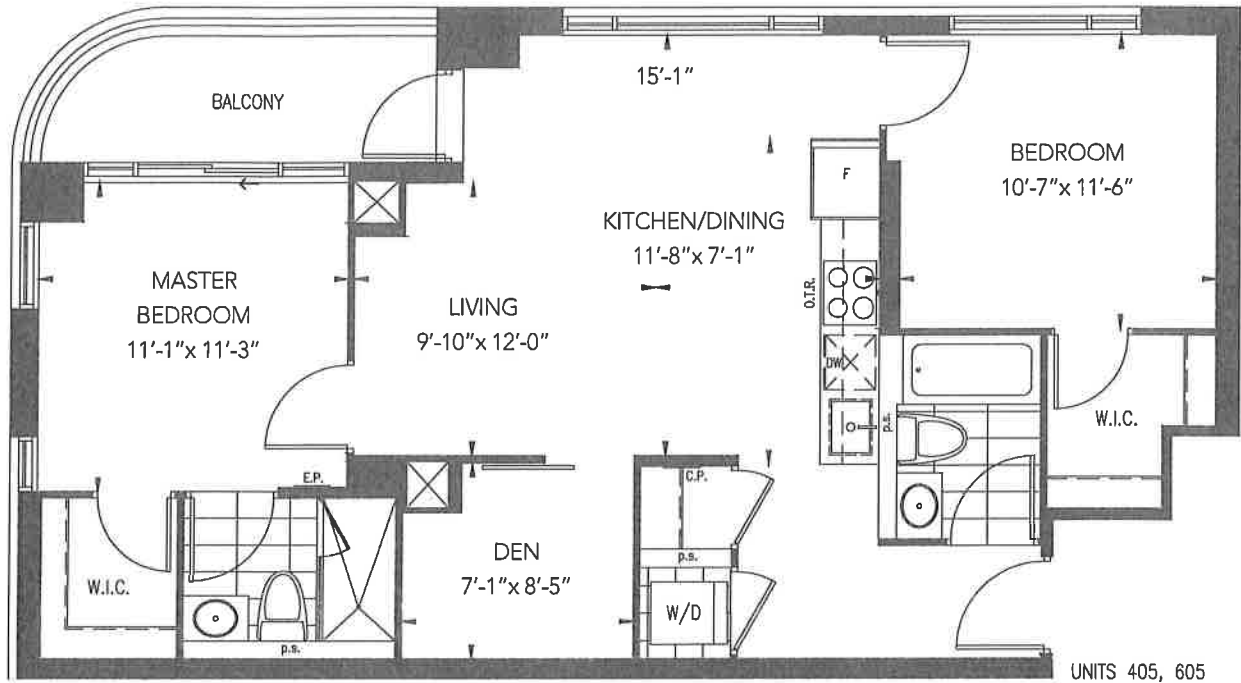
Dimensions, specifications, layouts and materials are approximate only and are subject to change without notice. Tile patterns may vary. Window size and location may vary. Actual usable floor space may vary from stated floor area. Balcony/terrace/patio area is approximate and not included in net suite area.



THE MACKENZIE

BOUTIQUE CONDOS IN MAPLE

2 BEDROOMS + DEN – 2D-D 955 SQ.FT.



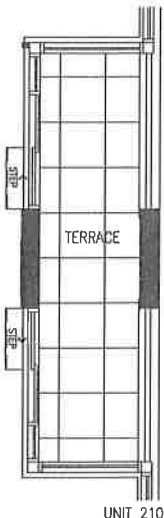
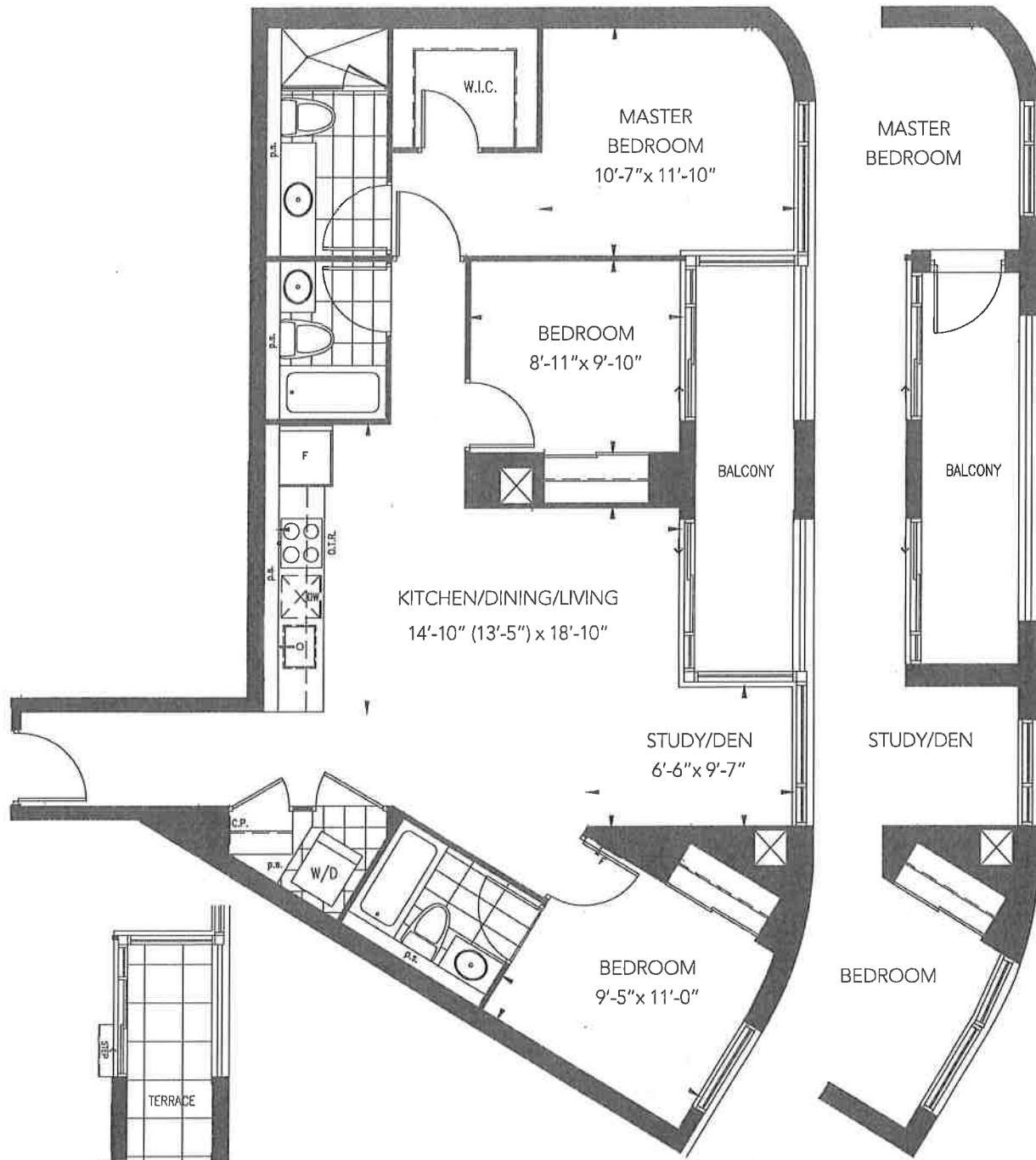
Pemberton
Everything a home should be

Dimensions, specifications, layouts and materials are approximate only and are subject to change without notice. Tile patterns may vary. Window size and location may vary. Actual usable floor space may vary from stated floor area. Balcony/terrace/patio area is approximate and not included in net suite area.

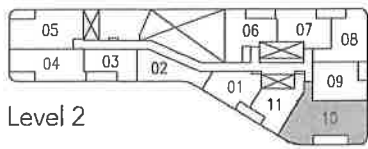


THE MACKENZIE
BOUTIQUE CONDOS IN MAPLE

3 BEDROOMS + DEN – 3D-A
1,240 SQ.FT.

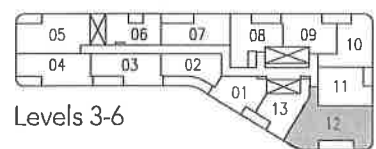


UNITS 412, 612



Level 2

UNITS 312, 512



Levels 3-6



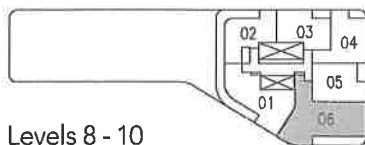
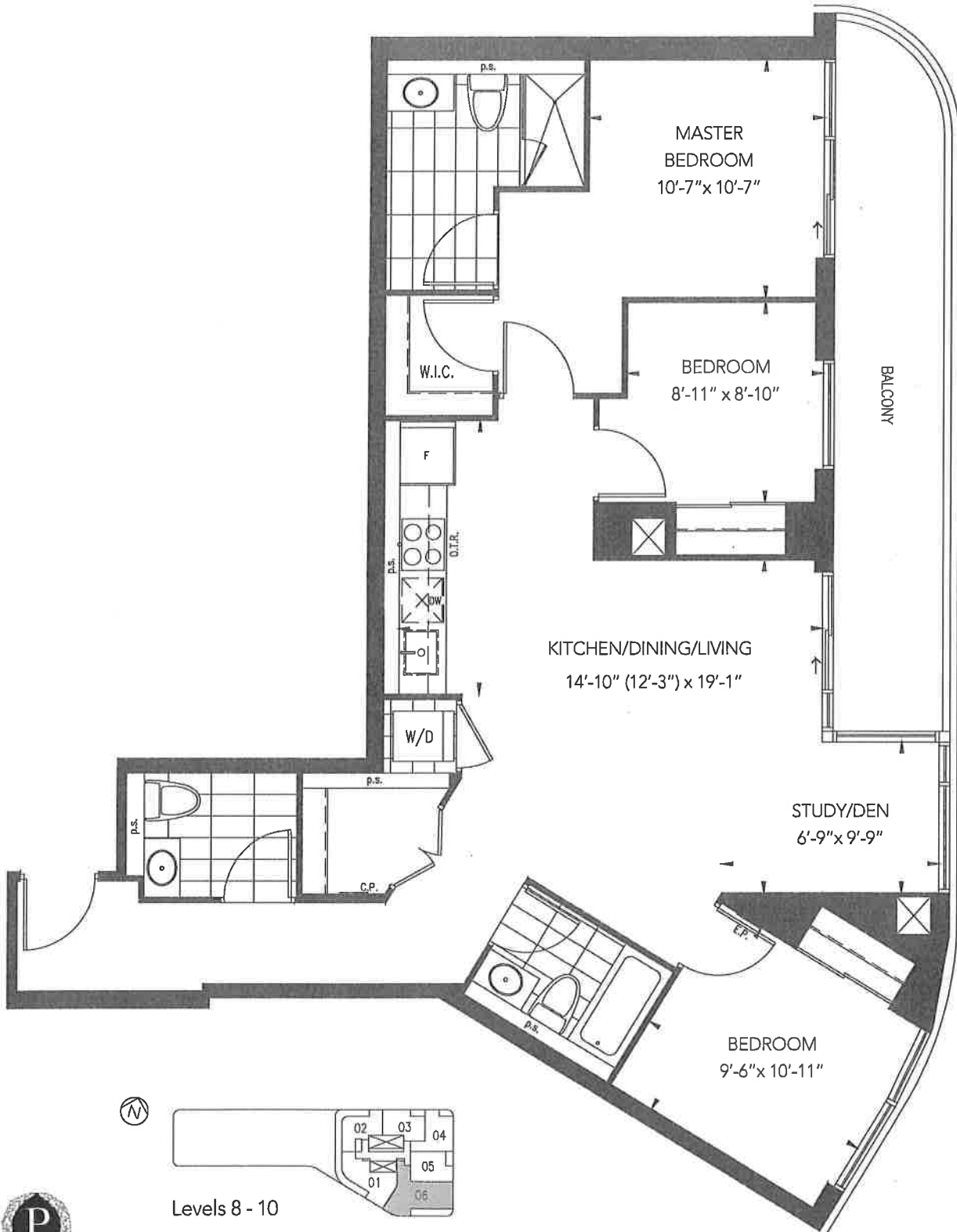
Pemberton
Everything a home should be

Dimensions, specifications, layouts and materials are approximate only and are subject to change without notice. Tile patterns may vary. Window size and location may vary. Actual usable floor space may vary from stated floor area. Balcony/terrace/patio area is approximate and not included in net suite area.



THE MACKENZIE
BOUTIQUE CONDOS IN MAPLE

3 BEDROOMS + DEN – 3D-B (BF)
1,250 SQ.FT.



Pemberton
Everything a home should be

Dimensions, specifications, layouts and materials are approximate only and are subject to change without notice. Tile patterns may vary. Window size and location may vary. Actual usable floor space may vary from stated floor area. Balcony/terrace/patio area is approximate and not included in net suite area.