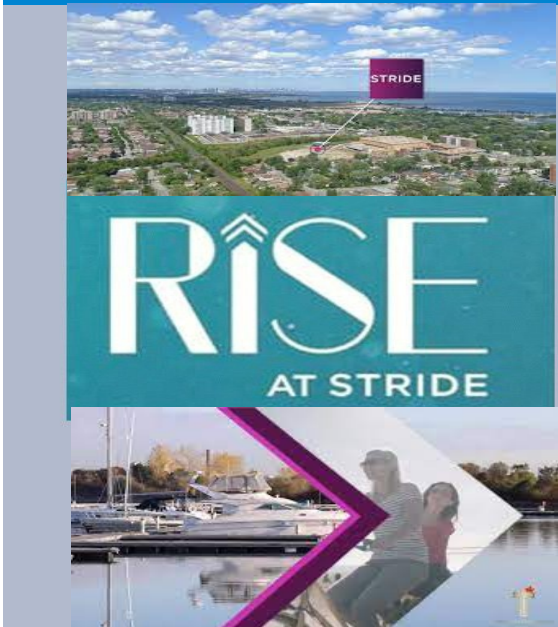


LUXURY CONDO ASSIGNMENT: DECEMBER 2021

RISE AT STRIDE – LAKESHORE IN PORT CREDIT



STUNNING → UNOBSTRUCTED → SOUTH/EAST → CN TOWER & LAKE ONTARIO VIEWS!

PRICE: \$1,300,000 2BR+DEN / 2BATHS: 1058 SQ.FT.
TERRACE +319 SQ.FT.

TOTAL: 1377 SQ.FT. 9th FLOOR

2 PARKINGS, LOCKER INCLUDED IN THE PRICE

PURCHASE PRICE (AUGUST 2019): \$1,023,400

DEPOSIT PAID: \$51,170

FUTURE DEPOSIT (ON OCCUPANCY, 2023): \$51,170

TO PURCHASE THIS UNIT YOU NEED TO PAY

1) DEPOSIT PAID: \$51,170

2) PROFIT: \$276,600

TOTAL FOR THE ASSIGNMENT: \$327,770



**A 5-Min Walk to
Lake Ontario**

**Floor-model:
SKY 3**

**Maintenance
Fee: \$608**

Just off of Lakeshore Rd.E.
between Hurontario St.
and Cawthra Rd.



Click Below To Get The Map

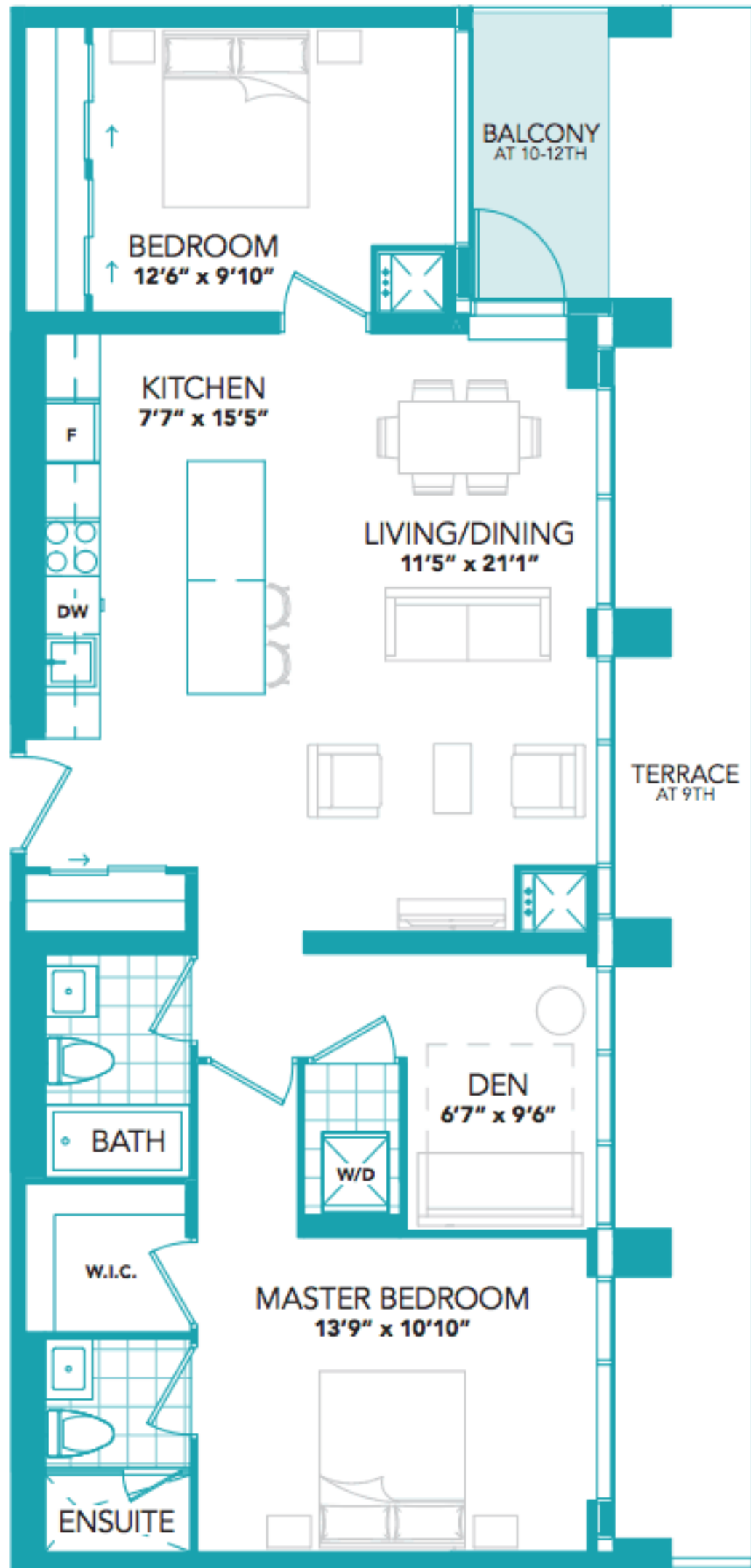
<http://goo.gl/maps/wUozG5Md8GEhTWei8>

Call/txt 416.414.4587 Max Khazanovich REALTOR
Right At Home Realty Investments Group Inc.

SKY 3

1058 SQ. FT.
TERRACE 319 SQ. FT. | BALCONY 44 SQ. FT.

LUXURY SUITES 2+1 2





MyStride.ca

»STRIDE»

Life's A Breeze



KINGSIIEN

GROUP INC.

The Kingsmen name stands for passion, tradition and excellence. These qualities run deep through our lineage and surface in how we design and create each one of our homes. We have been building beautiful communities across southern Ontario for over 30 years. Our goal is to deliver premium quality and value across every neighbourhood we create, from ultra-luxury enclaves to first homes. Craftsmanship means the world to us because like your family's legacy, it not only defines who you are today, but for generations to come.





We specialize in the planning and development of landmark residential and commercial real estate projects across southern Ontario.



» STRIDE »

The lake is a calm, silvery blue. A reflection of the morning sun and sky. Shops are open for business, brunch on patios, bikers, runners, the neighbourhood is already alive and your schedule's wide open. Maybe you'll run the waterfront or explore that little boutique store you've been telling your friends about. Probably both.

This is your day. Go get it.



INSPIRATION
LAKEVIEW

» STRIDE »



Specifications subject to change without notice. Renderings are artist's concept. Architectural elements may vary from renderings shown. E. & O. E.

An aerial photograph of a coastal city. In the foreground, there is a dense residential area with various houses and apartment buildings. A large, multi-story brick building is prominent in the lower left. The middle ground is filled with lush green trees. In the background, a large body of water (likely a lake) stretches to the horizon under a clear blue sky. A long pier or breakwater extends into the water. The text "Life's A Breeze" is overlaid in the center, and "LAKEFRONT PROMENADE PARK" and "PORT CREDIT YACHT CLUB" are labeled on the right side.

Life's A Breeze

LAKEFRONT
PROMENADE PARK

PORT CREDIT
YACHT CLUB



Specifications subject to change without notice. Renderings are artist's concept. Architectural elements may vary from renderings shown. E. & O. E.

WHAT'S IN YOUR COURTYARD?

When completed, Stride will consist of seven townhome blocks built around a unique community courtyard, designed to bring people together. It will be a place to play, meet, and connect or simply unwind, relax and reflect.







LAKE ONTARIO



TRANSPORTATION

- 1 Port Credit GO Station
- 2 Long Branch GO Station

PARKS & RECREATION

- 1 Huron Park
- 2 J.C. Saddington Park
- 3 Credit River Flats Park
- 4 Port Credit Memorial Park
- 5 JJ Plaus Park
- 6 Cenotaph Park
- 7 Lornewood Creek Trail Park
- 8 St Lawrence Park

- 9 Tall Oaks Park
- 10 Lakefront Promenade Park
- 11 AE Crookes Park
- 12 Cawthra Park
- 13 Lakeview Golf Course
- 14 Toronto Golf Course
- 15 Marie Curtis Park
- 16 Etobicoke Valley Park
- 17 Colonel Sam Smith Park

SHOPPING & ENTERTAINMENT

- 1 Shoppers
- 2 Credit Landing Shopping Centre
- 3 CIBC
- 4 Cineplex Cinemas Mississauga
- 5 Playdium Amusement Centre
- 6 RBC Royal Bank
- 7 Scotiabank
- 8 Metro Lakeshore-Cawthra
- 9 Rabba Fine Foods
- 10 Dixie Outlet Mall
- 11 Sherway Gardens Shopping Centre
- 12 Lowes
- 13 Ikea



SCHOOLS & LIBRARIES

- | | |
|---------------------------------------|-----------------------------------|
| 1 Riverside Public School | 7 Mentor College (Grades 5 to 12) |
| 2 Port Credit Library | 8 St James Elementary School |
| 3 Applewood Rainbow Montessori School | 9 Cawthra Park Secondary School |
| 4 Forest Avenue Public School | 10 Humber College |
| 5 Port Credit Secondary School | |
| 6 Mineola Public School | |

DINING

- | |
|----------------------------|
| 1 Snug Harbour |
| 2 Papa Giuseppe's |
| 3 Door FiftyFive |
| 4 Raw Aura Organic Cuisine |

5 Colossus Greek Taverna

- | |
|--------------------------------|
| 6 Thyme Ristorante |
| 7 Asaka Sushi |
| 8 Coffee Culture Cafe & Eatery |
| 9 Dairy Cream |

MEDICAL

- | |
|---|
| 1 Trillium Health Partners - Mississauga Hospital |
| 2 Lakeshore Cawthra Medical Centre |

Map may not be to scale. E. & O. E.



Specifications subject to change without notice. Renderings are artist's concept.
Architectural elements may vary from renderings shown. E. & O. E.

Spend the day on the beach or
at the park, shopping or at your
favourite restaurant or patio.



AREA AMENITIES



489
PARKS
all within
20km



650
KM
waterfront
trail



85
RESTOS
within a
2km radius



A+
SCHOOLS
GTA's
highest level

» Be active by the lake

» Walk to shops,
eats and the lake

casualife

FIRED
UP!

» Downtown
in **20** via
GO Train





SO MUCH TO DO

Over 180 different festivals from
Busker Fest, movies under the stars,
wine tastings, regattas at the
harbourfront and more.

Snug Harbour



» Everything is
a step away

» Stride on

YOUR URBAN ADVENTURE AWAITS

» Walk, run, stroll, bike



20

IEFE
FIESTA



FEATURED URBAN TOWNS



With its strong, modern exteriors, Stride is all about confidence. Each architectural line has purpose, articulating entrances, aligning the asymmetrical window mullions from one floor to the next and giving every townhome a bold, contemporary look and feel. Top it off with a collection of private rooftop terraces, perfect for entertaining or enjoying family and friends. Welcome to modern Kingsmen design.



Specifications subject to change without notice. Renderings are artist's concept. Architectural elements may vary from renderings shown. E. & O. E.





»» Laugh,
eat and
enjoy

»» A place
for everyone



**FIND YOUR
STRIDE**



THE COURTYARDS COMPLETE A SENSE OF COMMUNITY





Specifications subject to change without notice. Renderings are artist's concept.
Architectural elements may vary from renderings shown. E. & O. E.



**AFTER A DAY ON THE BEACH OR AT THE PARK,
IT'S TIME TO RECHARGE. BUT WHERE?
AT YOUR FAVOURITE RESTAURANT OR PATIO?
NOT TONIGHT. TONIGHT, YOU'RE TAKING IT UP
TO YOUR PRIVATE ROOFTOP TERRACE AND
UNWINDING AT HOME.**





Specifications subject to change without notice. Renderings are artist's concept.
Architectural elements may vary from renderings shown. E. & O. E.

**SIGNATURE KINGSMEN APPOINTMENTS INCLUDE
ENGINEERED FLOORING, EUROPEAN INSPIRED TILES,
MINIMALIST HARDWARE AND PREMIUM APPLIANCES.**



You don't have to live downtown to get downtown style and finishes. Every townhome at Stride has been built around the principles of smart, modern design including open layouts with an emphasis on natural light, beautiful, intuitive kitchens and ensuring one space connects effortlessly with another.



Specifications subject to change without notice. Renderings are artist's concept. Architectural elements may vary from renderings shown. E. & O. E.





RISE
AT STRIDE



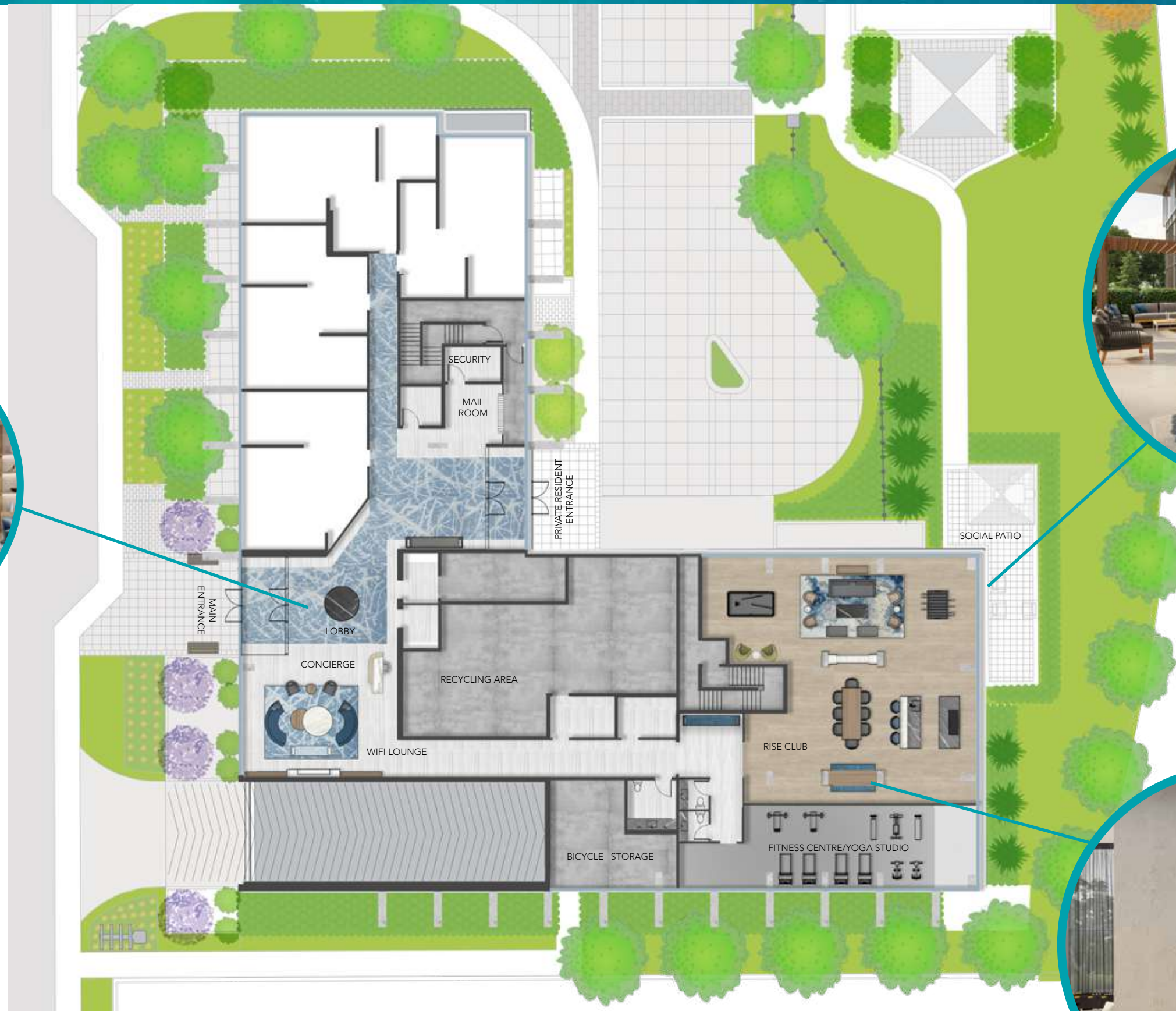


LAKE-INSPIRED CONDOS IN THE HEART OF PORT CREDIT

HEIGHTEN YOUR SENSES. IN STYLE.



It's time to Rise. Drawing inspiration from the lake, the lobby and resident social spaces are infused with graceful finishes that hint at water, fluidity and sophistication. Welcome to elevated living.



Guests have arrived. The Rise Club is ready for anything. Dinner parties, big games, friends, family, indoors or out. Best host status achieved.



Heart rate up. The Fitness Centre and Yoga Studio features weights, cardio machines and stretch space to get your workout on. Calmness restored.

FIRST IMPRESSIONS.
RAISE THEM.



Rise lobby features concierge services, fireplace lounge, keyless entry, WiFi and guest access granted via app.

Specifications subject to change without notice. Renderings are artist's concept. Architectural elements may vary from renderings shown. E. & O. E.

A HIGHER LEVEL
OF SOIREE.

Rise Club features a full kitchen, dining arrangement, lounge spaces, double-sided fireplace, game zone and guest suite.

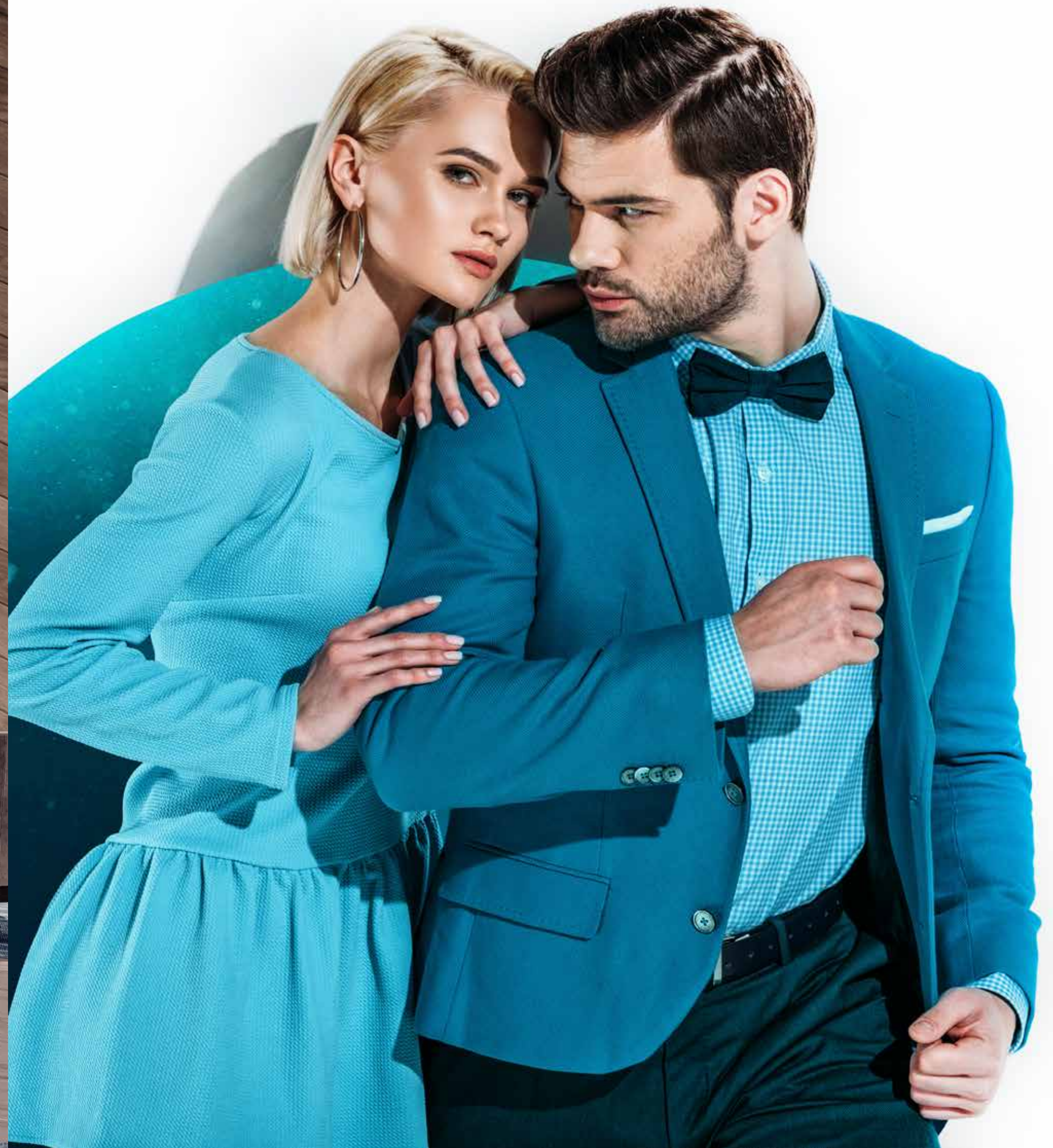
Specifications subject to change without notice. Renderings are artist's concept. Architectural elements may vary from renderings shown. E. & O. E.



GO OUTSIDE.
TAKE YOUR COMFORT
ZONE WITH YOU.

Rise Club also offers a private
social patio with intimate seating
alcoves made for summer nights.

STYLE.
DESIGN.
LOCATION.
LIFESTYLE.
THE LAKE.
RISE A STEP
ABOVE.



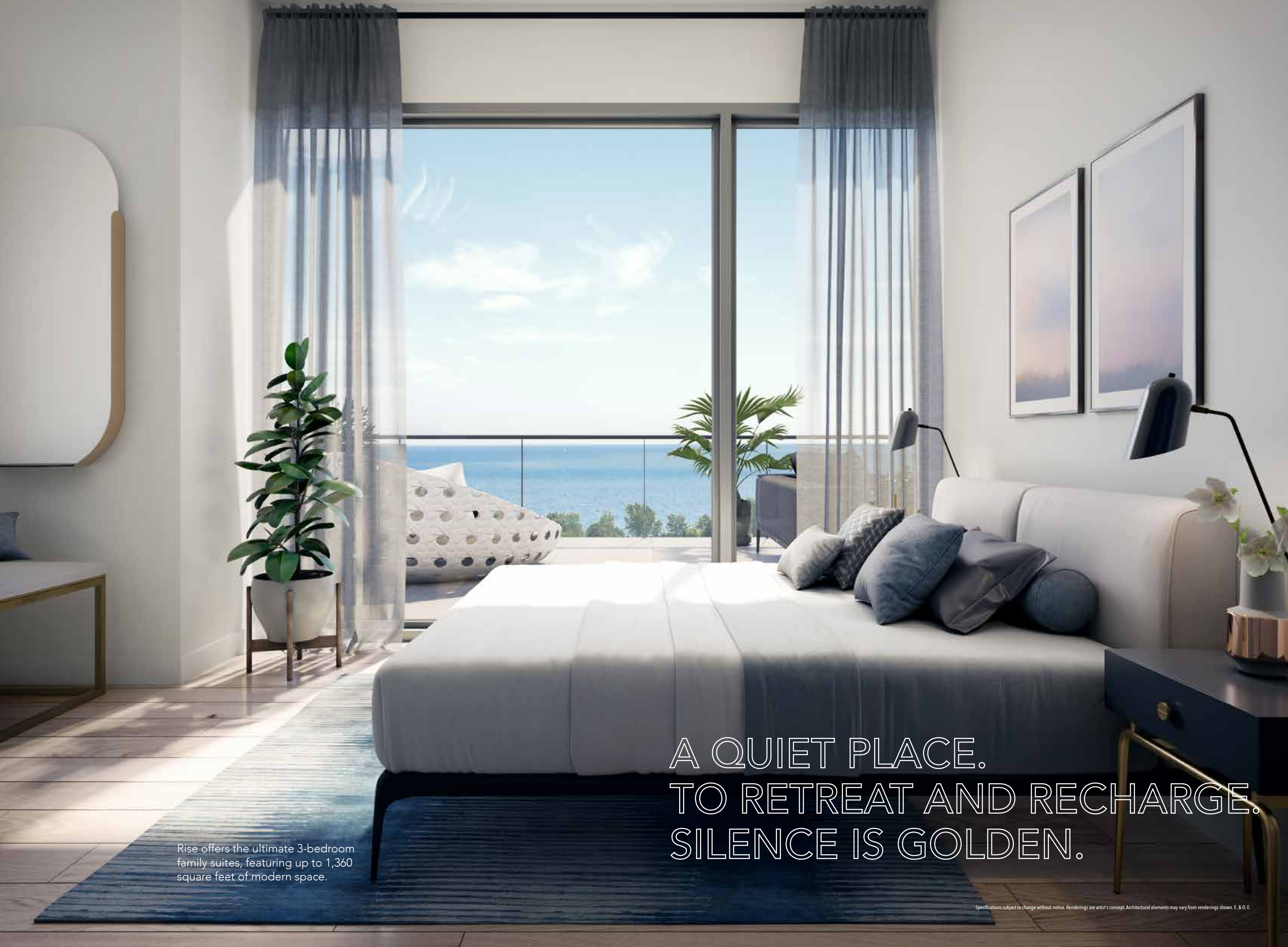
Suites feature clean lines, light woods, polished surfaces with quartz, ceramic and stainless-steel finishes. Simply Scandinavian.

FORWARD
DESIGN. INTUITIVE
FUNCTIONALITY.
EUROPEAN
CRAFTSMANSHIP.
AND YOU HAVEN'T
EVEN LIFTED A
FINGER YET.



UPSCALE, INTIMATE
AND COMFORTABLE.
THIS IS OUTDOOR
LIVING AS IT SHOULD BE.

Suites on the 7th and Penthouse
floors feature expansive terraces
with linear fireplaces so you can
move the celebrations outdoors.



Rise offers the ultimate 3-bedroom family suites, featuring up to 1,360 square feet of modern space.

A QUIET PLACE.
TO RETREAT AND RECHARGE.
SILENCE IS GOLDEN.

Specifications subject to change without notice. Renderings are artist's concept. Architectural elements may vary from renderings shown. E. & O. E.



We specialize in the planning and development of landmark residential and commercial real estate projects across southern Ontario. Our ever-growing portfolio includes over 3,000 condominium suites and over 1,500,000 square feet of commercial and industrial space.

KINGSIIEN

GROUP INC.

We've been designing and building beautiful communities across southern Ontario for over 30 years. Our goal is to deliver premium quality and value across every neighbourhood we create, from ultra-luxury enclaves to first homes. We're proud of our accomplishments, but knowing our homeowners are loving the lifestyles we create is the ultimate satisfaction.



RiseAtStride.com

KINGSILLEN
GROUP INC.



ORCA
COMMUNITIES