

CHARISMA-2 NORTH TOWER



PRICE – 990,000 LARGE 2BR /2 BATH – MODEL C -877 (877 SQ.FT + 180 SQ.FT BALCONY.
TOTAL: 1,057 SQ.FT) 10 FLOOR SOUTH/ WEST UNABSTRACTED VIEW

PARKING AND LOCKER INCLUDED IN THE PRICE

PURCHASE PRICE (JUNE 2018) – 625,900

DEPOSIT PAID – 93,885

FUTURE DEPOSIT (ON OCCUPANCY 2024) = 31,295

TO PURCHASE THIS UNIT YOU NEED TO PAY

1) DEPOSIT PAID – 93,885

2) PROFIT – 364,100

TOTAL FOR THE ASSIGNMENT: 457,985

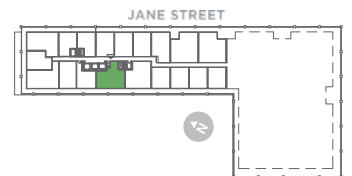
2 BEDROOM | Interior 877 Sq.Ft. • Exterior 180 Sq.Ft. • Total 1,057 Sq.Ft.

C
877

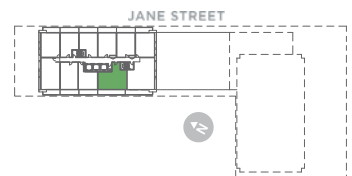


CHARISMA SERIES
10' CEILING • FLOOR 5-6

TOWER SERIES
9' CEILING • FLOOR 2-4



TOWER SERIES
9' CEILING • FLOOR 7-12, 14-24



Dimensions, specifications, layouts, location of materials and fixtures, tile floor patterns and architectural detailing (including window size and location and door size, location and swing) are approximate only and are subject to change or modifications, without notice. Actual usable floor space varies from stated floor area. Orientation of suite may be reversed and Purchaser agrees to accept same. Balconies, terraces and patios are exclusive use common elements shown for display purposes only and location and size are subject to change without notice. All illustrations are artist concept only. The provisions of Schedule "X" of this Agreement, including Section 6 and 38 apply to this Schedule. E. & O.E.



*Artist's impression.



Alluring, iconic and simply beautiful – welcome to Charisma on the Park. A combination of outstanding architecture, refined interiors and a truly stunning landscape, Charisma by Greenpark is the setting for the life you imagined, and the life you can now live. There are many ways to go, but this is truly the way forward.

A FRESH TAKE



CHARISMA

ON THE PARK

Charisma integrates seamlessly while also enhancing the existing community – the epitome of a masterful development. From the sleek design to the lush surroundings, Charisma brings a new perspective to the local residential landscape. The building is impeccable from every angle and in every last detail, defining what it means to own a luxurious condo in Vaughan.

ON LUXURY



*Artist's impression.



the way home.

The moment you walk through the grand entrance into Charisma on the Park, you will immediately be captivated by an elegant aura and breathtaking finishes. Every detail has been carefully selected to create a lobby unlike any other, where residents will be greeted by our concierge and have constant access to the Wi-Fi Lounge. Where time is always well spent, the way home is here.

welcome
to the
great
indoors.



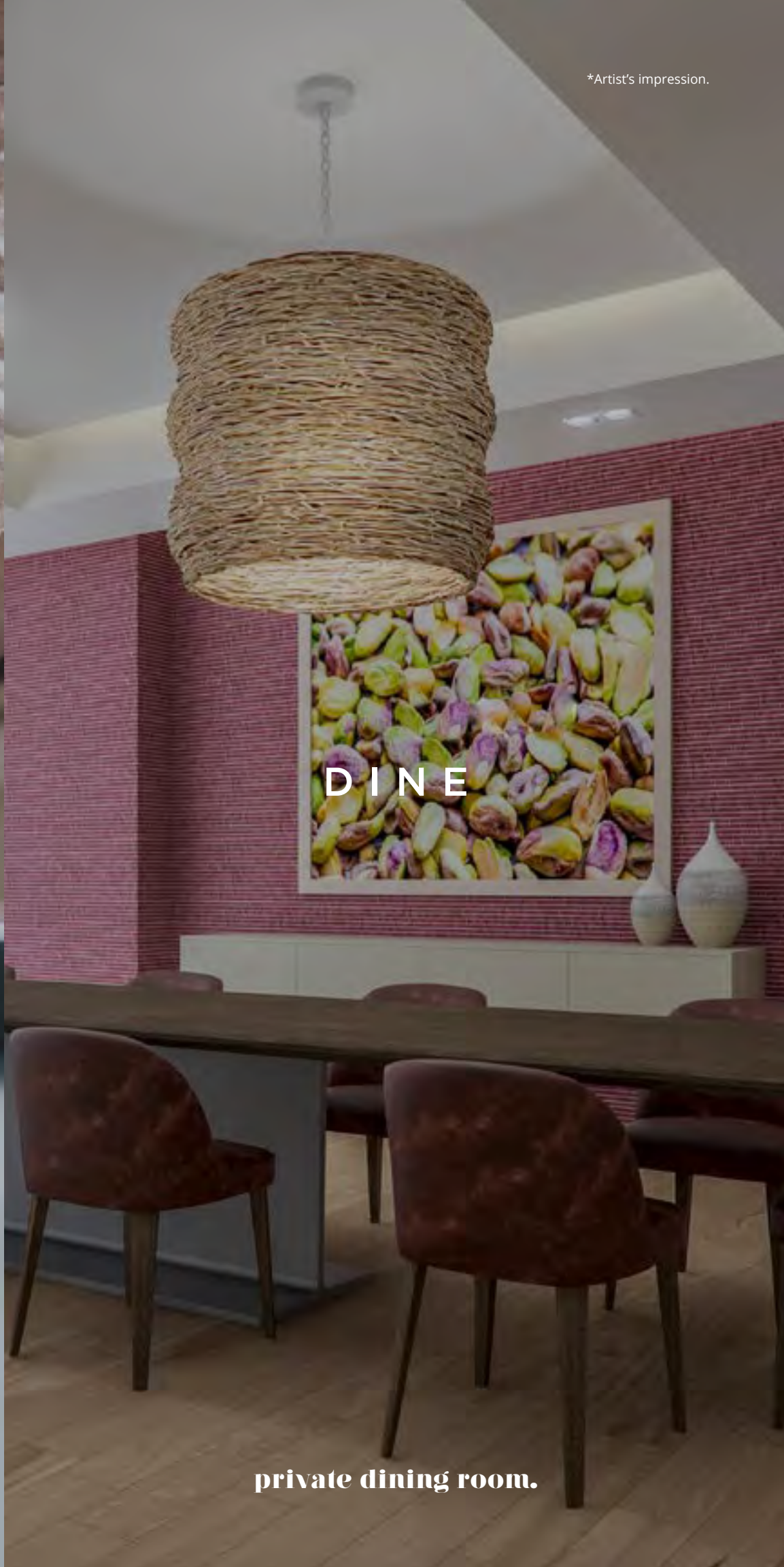
We all crave those moments that only the comfort of home can provide. Charisma is designed with these moments in mind. You'll have access to an exciting bocce court and lounge, a billiards and games room and a cozy theatre room that we promise you won't ever want to leave. Hours of enjoyment await - now, just let the good times roll!



CHARISMA

PLAY

billiards room.



*Artist's impression.

DINE

private dining room.



GROOM

pet grooming room.



*Artist's impression.

VIEW

theatre room.

MAIN FLOOR AMENITIES

main floor.

CHARISMA



- 1 Main Floor Lobby with Wi-Fi Lounge + 24 Hour Concierge
- 2 Theatre Room
- 3 Billiards Room
- 4 Games Room
- 5 Bocce Courts + Lounge
- 6 Pet Grooming Room
- 7 Private Dining Room

*Artist's impression.

sixth floor.



- 1 Outdoor Pool
- 2 Pool Terrace
- 3 Pool Lounge
- 4 Charisma Fitness Club
- 5 Yoga Studio

*Artist's impression.

ON THE PARK

H O M E I S W H E R E



CHARISMA

OUTDOOR POOL + TERRACE

T H E P O O L I S

sunshine, poolside, downtime.

Living your best life is all about having the perfect balance. Charisma on the Park is designed with this exact philosophy as its aim. Every person needs a place where they can refresh and rejuvenate, and at Charisma, there are so many spaces that fit this bill. Whether it's an indoor or outdoor kind of day, there's a spot for you.



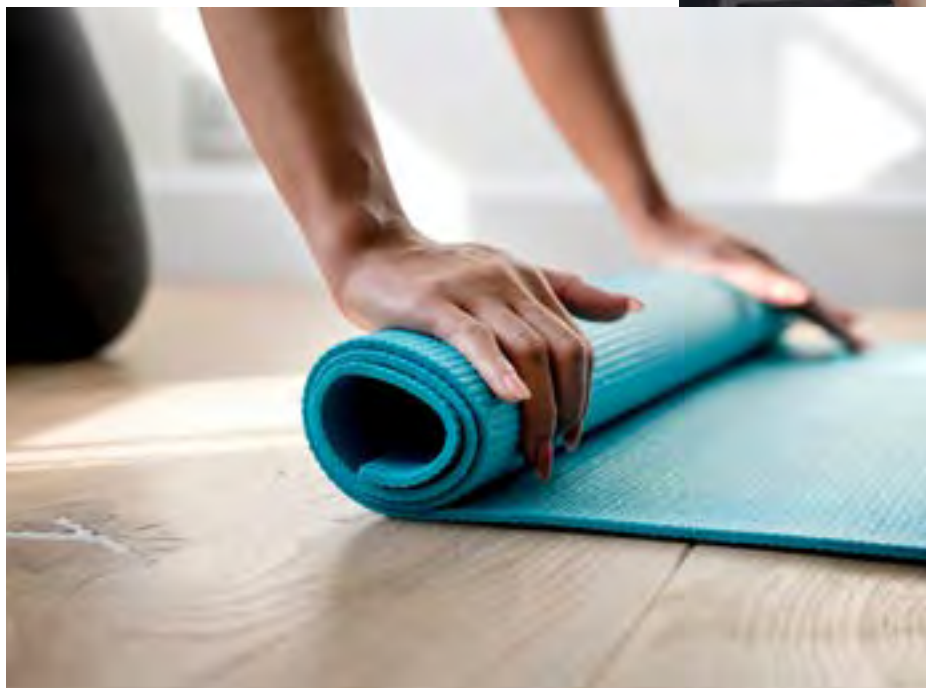
*Artist's impression.

Take it poolside at Charisma. When the warmer weather and sunny days are here in full-force, you'll have the ideal place to make the most of your downtime. Our outdoor pool lounge and adjacent pool terrace promise to be your favourite spaces to wind down and renew.

the way we move.

At Charisma on the Park, you are well-equipped with a state-of-the-art fitness centre where you can achieve even your most challenging goals. Work out the way you want to, whether it's running on a treadmill, practicing yoga, or meditating to relieve stress. No matter what it is you want to conquer, you can accomplish it. Wellness comes first, and it begins here.

CHARISMA



*Artist's impression.

FITNESS CLUB

R O O M T O

Peace and tranquility come naturally at the Serenity Courtyard. This space truly lives up to its name, offering an outdoor haven with views of the surrounding Vaughan landscape and beautiful parkland. It's a quiet place to spend time away from your daily responsibilities and to just live in the moment. Inhale, exhale and enjoy.



CHARISMA

SERENITY COURTYARD

*Artist's impression.

B R E A T H E



*Artist's impression.



the way we party.

A room with a view is exactly where we want to be – especially when it's party time. This modern indoor lounge features more than enough seating, a large bar space, and a kitchen fit for any caterer. No matter the occasion, it will be special and memorable when celebrating here. Elevate your next event to new heights in Charisma's Party Room.



on cloud nine.

rooftop floor.



- 1 Rooftop Party Room North
- 2 Rooftop Terrace North
- 3 Rooftop Party Room South
- 4 Rooftop Terrace South



ROOFTOP TERRACE + PARTY ROOM

Day or night, it's sure to be a good time at Charisma's Rooftop Terrace. One of the most breathtaking amenities in the building, this exquisite outdoor space will make any event extraordinary, or can transform a regular night into an unexpectedly special occasion. Enjoy this unique setting, where lasting memories are just waiting to be made.

*Artist's impression.

*Artist's impression.

LIFE ON THE PARK

Charisma is designed to facilitate the best living experience possible – and nothing compares to a park setting when it comes to the place you call home. This brilliantly landscaped 1.6-acre public park is positioned directly on the property for immediate access and stunning views. Not only is Charisma on the Park the perfect urban setting – it's also a true natural oasis – a place where you can enjoy both a serene and active lifestyle.

*Artist's impression.