

**Investing in the Greater Toronto Area Condos?
Inspect Top 20 New GTA Condos Now!**

NEWGTA CONDOS.com



SIMPLICITY IS BEAUTIFUL.

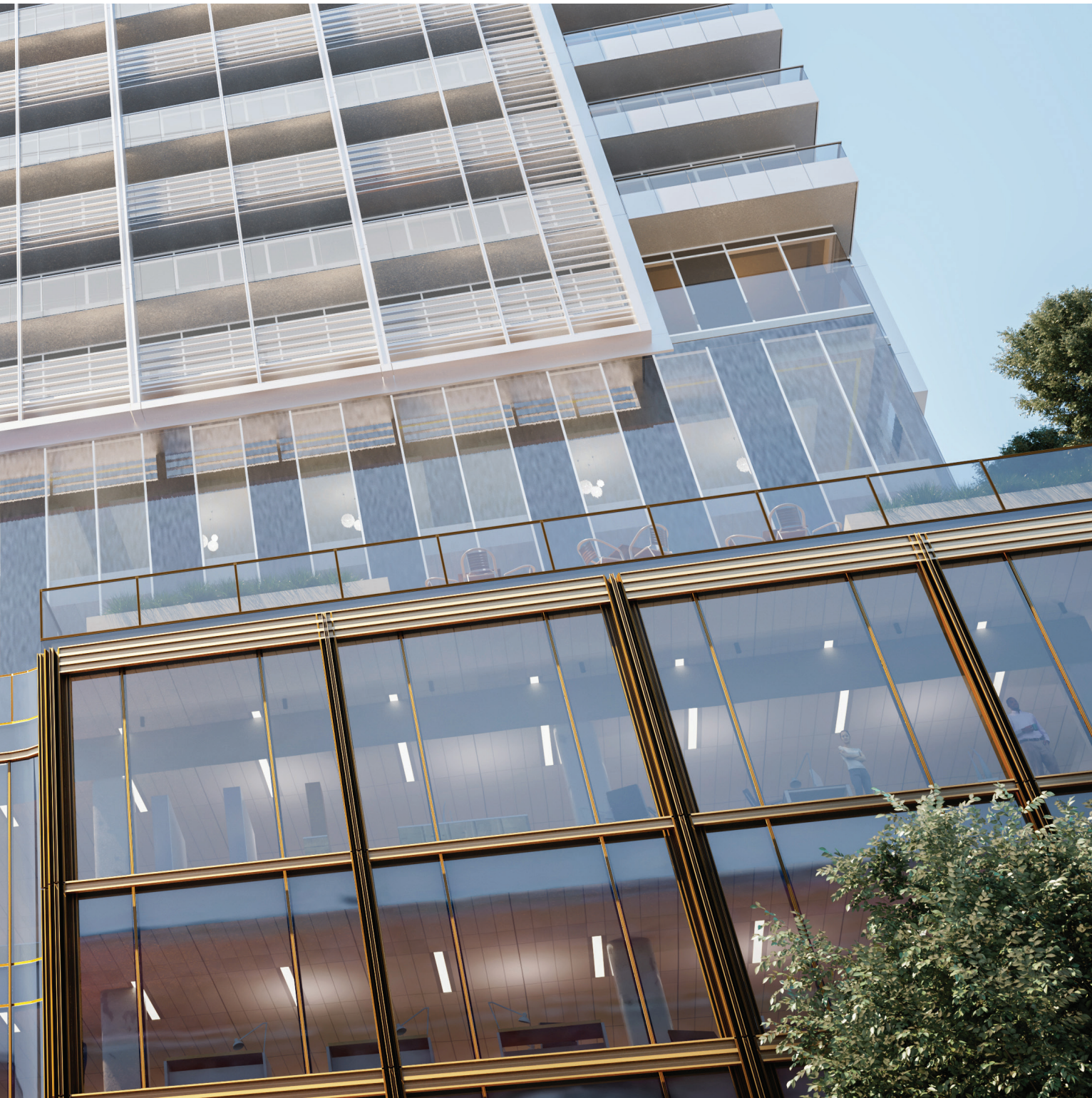
A dialogue in simplicity.
Set in a vibrant city block,
88 Queen is transformative.
Surprising. Sculptural. Stunning.
A spectacular addition to Toronto's
burgeoning skyline.
On transit. On style. On mood.
An embodiment of chic functionality.
Refinement with an urban edge.
Offering a life that demands to be seen.
And experienced.
And, most importantly, savoured.





Resting on an impressive bronze podium, soaring into the heavens, 88 Queen is a vision in white. Melding with the clouds and light, its iconic lattice of white aluminum and fritted glass and deep vertical fins make a stunning statement. Animating the skyline. Enlivening the streetscape. An expression of perfection. Letting the sky in. Keeping the world out. Innovative design that reimagines life in a thriving city.













Retail Mews

A full block. Between Queen and Shuter.
A visionary urban community. Condos. Shops.
Restaurants. Offices. Green spaces. 88 Queen.
Redefining the urban experience. A place of
plenty. Connected to the context of the City.
Design that articulates the concept of stylish
city living.



Retail Mews





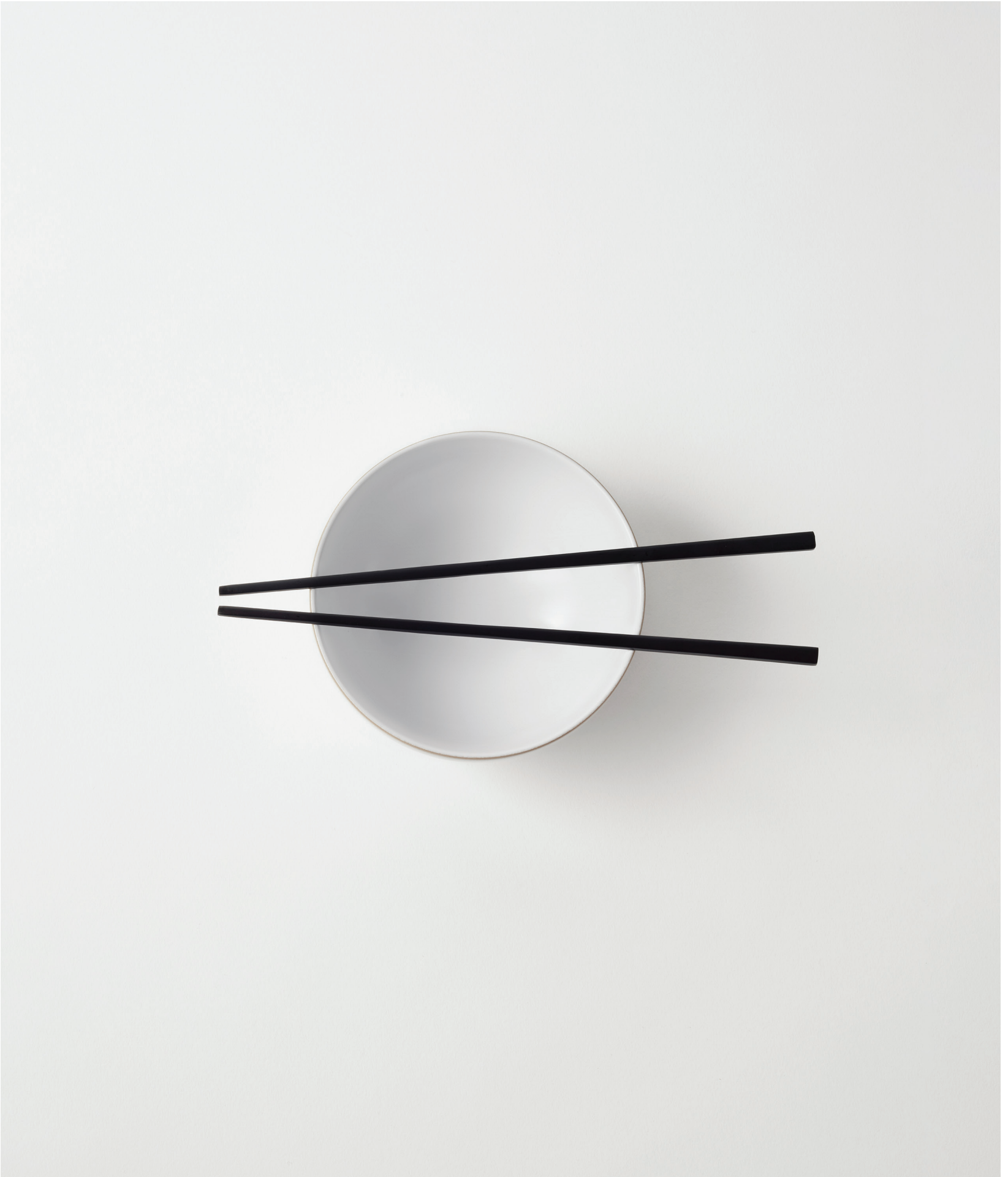
Retail Mews



Go places.



HOKKAIDO RAMEN
SANTOUKI



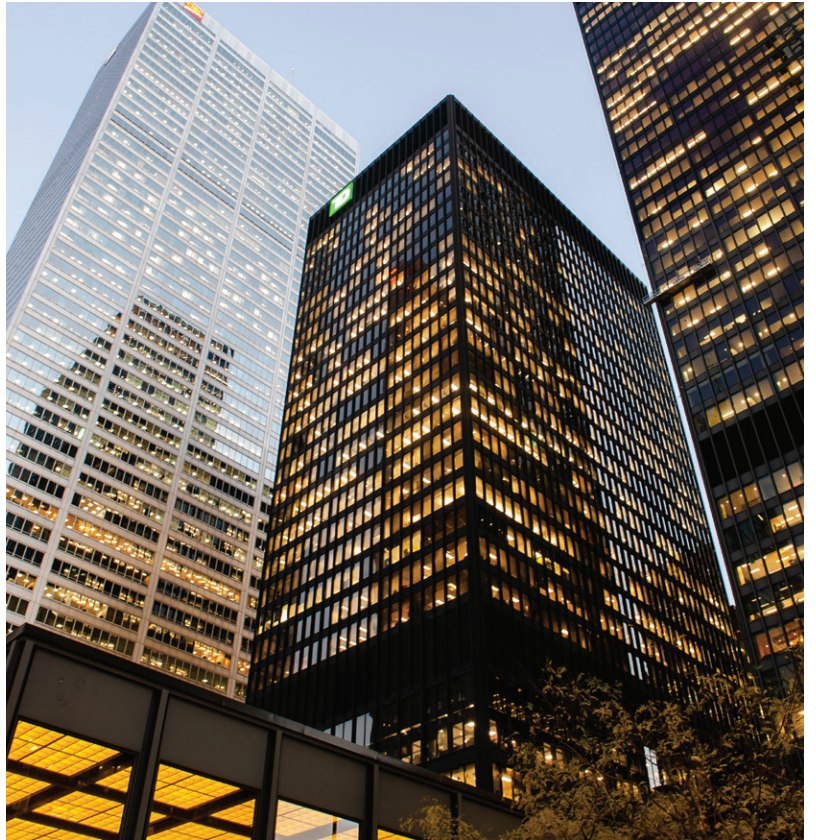
Chic. Cosmopolitan. Cultured. 88 Queen is quite simply, the best place to be. A place of joy and discovery. Surrounded by the city. From hot dogs and beer at Scotiabank Arena to champagne and canapes at Massey Hall, find your happy place. Enjoy a play. Or a concert. Or a game. Or a smorgasbord of food at the St. Lawrence Market. Meet, eat, walk, shop, play, cheer... all at the same time.













Downtown on Queen Street East. Minutes from the important and necessary. Financial District. Eaton Centre. Or Queen subway. Walk the 'hood. Explore the nooks. Take the subway. Take the streetcar. Take yourself to a place you've never ever been. 88 Queen, every day is different. Every step, an adventure.



RESTAURANTS ■

- 1 Ardo
- 2 B Espresso Bar
- 3 Cactus Club
- 4 Carbon Bar
- 5 George Restaurant
- 6 Gyu-Kaku Japanese BBQ
- 7 Hogtown Smoke
- 8 Ki
- 9 La Bettola di Terroni
- 10 Nami
- 11 Pearl Diver
- 12 Planta Burger
- 13 Richmond Station
- 14 Sud Forno
- 15 Terroni
- 16 The Chase

ENTERTAINMENT ■

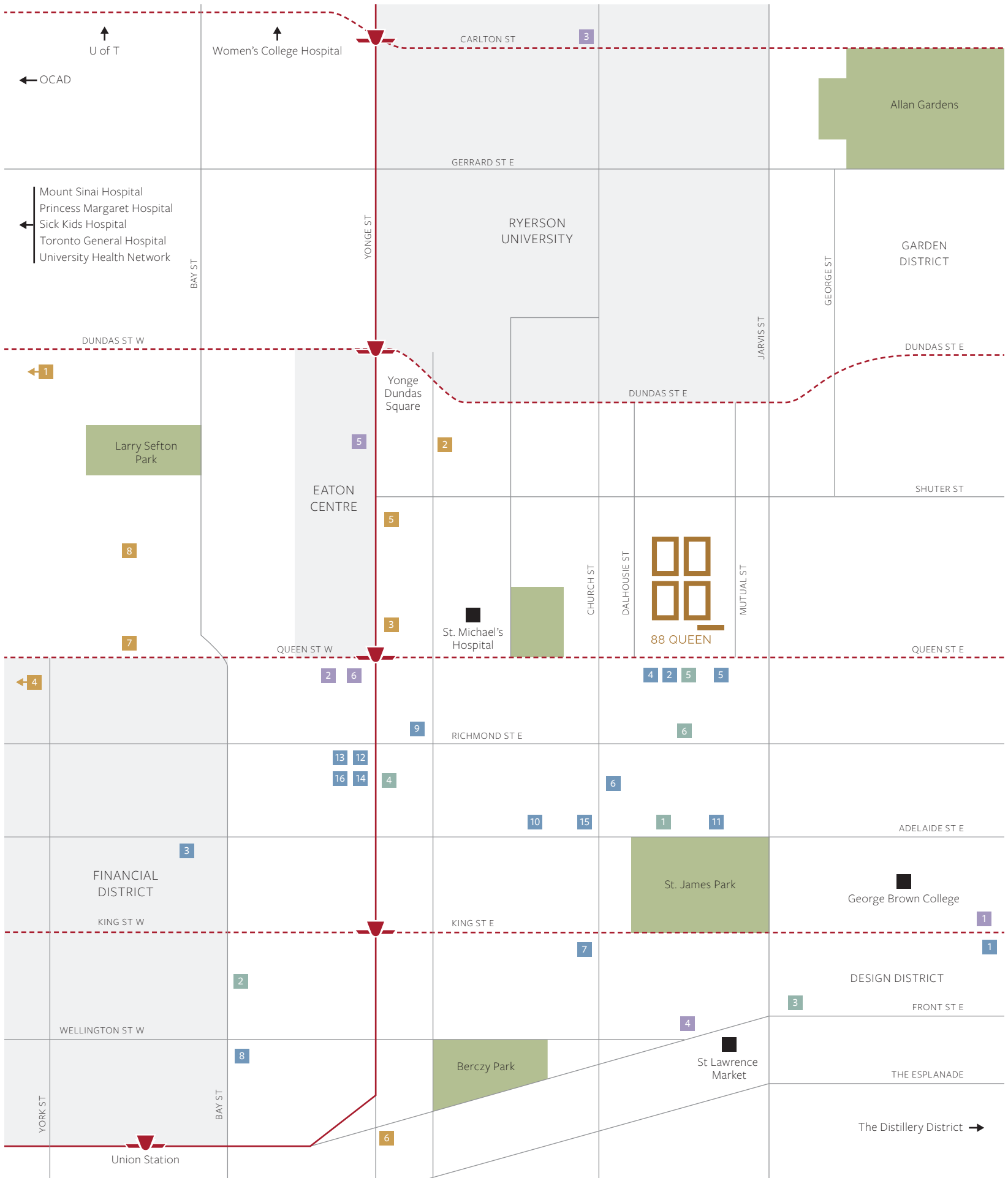
- 1 Art Gallery of Ontario
- 2 Ed Mirvish Theatre
- 3 Elgin Winter Garden Theatre
- 4 Four Seasons Centre for the Performing Arts
- 5 Massey Hall
- 6 Meridian Hall
- 7 Nathan Phillips Square
- 8 Toronto City Hall

HEALTH & WELLNESS ■

- 1 Bahn Thai Spa
- 2 Equinox
- 3 F45 Training
- 4 Goodlife Fitness
- 5 Sweet Grass Spa
- 6 The Ten Spot

SHOPPING ■

- 1 Design Within Reach
- 2 Hudson's Bay Company
- 3 Loblaws
- 4 Metro
- 5 Nordstrom's
- 6 Saks Fifth Avenue







South East View / 45th Floor





West View / 45th Floor



Rest and relaxation.





Lobby





Lobby





Outdoor Terrace, Infinity Pool



Outside, a hustling, bustling cacophony of dynamism. Inside, an oasis of calm. 88 Queen is a haven of tranquility in the heart of a busy city. With stones, soulful wood detailing imbued in a palette of soft natural tones, every texture, every fixture, spells quiet sophistication.





Every space, relaxing. Every breath, delightful. From the pool to the party room, yoga studio to the landscaped terrace, there's an innate sense of serenity within its walls. Quiet moments. Happy times. Dreamy mornings. Lively evenings. All live in harmony at 88 Queen.





Outdoor Terrace, Cabanas









Party Room





Party Room, Kitchen



6th Floor Amenity Space



7th Floor Amenity Space

A bright spot.







Suite Interior





Suite Interior, Bathroom

Fill it with your own imagination. Be creative. Be bold. Be quiet. Be you. This is your space. Tell your story. Surrounding your style at 88 Queen are modern streamlined kitchens. Spa-inspired bathrooms. Smooth finish ceilings. Integrated appliances. Bright clear walls for art. Or for your big screen addiction. And then, there are the views. Bold dazzling lake and city views. This is it. This is the place where your days begin and evenings end. Where you retreat. Dream and live your life.



GENERAL

- + Ceiling heights are approximately 8'6" from Floors 8 to 46 (legal levels 8 - 41); Approximately 9 feet on Floors 47 to 56 (legal levels 42-50); Approximately 10 feet on Floors 7 and PH (legal levels 7, 51-52). Dropped ceiling and bulkheads required where applicable as per plan.
- + Solid core door with security view hole
- + Smooth finished ceilings
- + Painted (white) baseboards, door frames, and casings
- + TV / Telephone outlets in principal rooms
- + Smoke alarms and water sprinkler system
- + Personally encoded suite intrusion alarm system with door contacts at front entry door keypad, connected to 24 hour concierge
- + In-suite controlled 2 pipe heat pump including an ERV/HRV, central air-conditioning and heating system
- + Washer and dryer, as per plan

KITCHENS

- + Kitchen cabinetry, colours to be selected from builder's standard samples
- + Porcelain countertops and backsplash from builder's standard samples
- + Single undermount sink with faucet
- + Integrated refrigerator, exhaust fan and dishwasher
- + Built in stainless steel microwave, oven, and cooktop
- + Under cabinet lights

BATHROOMS

- + Bathroom cabinetry, colours to be selected from builder's standard samples
- + Custom vanity countertop/sink from builder's standard samples
- + Choice of porcelain flooring, from builder's standard samples
- + Sink with faucet
- + Bathtub with faucet, as per plan
- + Glass shower stall with faucet and fixtures, as per plan
- + Accessory package including towel bar and toilet paper holder, where applicable

LIVING, DINING, DEN, BEDROOMS (as per plan)

- + Choice of vinyl flooring, colours to be selected from builder's standard samples
- + One capped ceiling outlet in dining room or above kitchen island, where applicable

LAUNDRY ROOM

- + Vinyl flooring or porcelain tiles as per plan, where applicable

E. & O.E. (Jan 2020) subject to change without notice.

St. Thomas Developments Group, an association of St. Thomas Developments Inc., St. Thomas Commercial Inc. and Queen Development Inc., is a proud Canadian real estate development company with an impeccable reputation for unparalleled design and unsurpassed quality.

Since 2001, St. Thomas Developments Group has completed major developments in the Greater Toronto Area. The landmark residential condominium project, One St. Thomas, is located in the prestigious Bloor-Yorkville neighbourhood. Designed by internationally renowned New York-based architect Robert A.M. Stern, One St. Thomas represents the ultimate expression of residential luxury with exquisite craftsmanship and custom designs throughout the 29-storey building.

St. Thomas Developments Group recently completed 7 St. Thomas, a luxury commercial condominium in the Bloor-Yorkville area that seamlessly blends restored Victorian townhouses with a stunning contemporary glass tower. The building was the winner of the prestigious 2018 Architizer A+ Awards for commercial mid-rise. 88 Queen follows the tremendous success of 88 Queen North – the first building in this urban development.

Internationally, St. Thomas Developments Group's parent company has built unique and distinctive residential, hospitality and commercial properties in the Far East for over two decades. Exclusive residential developments include 110 Repulse Bay, four fully detached Italian Renaissance-style residences; Bluewater, a 14-unit pre-war New York inspired apartment building; and 37 Deep Water Bay, a neoclassical-styled single-family residence which remains one of Hong Kong's most expensive homes.

Designer boutique hotels include The Putman, designed by the world-renowned Andrée Putman; The Jervois, with interiors by the legendary French designer Christian Liaigre; and 99 Bonham, designed by famed Italian architect Antonio Citterio. Landmark commercial buildings include the Robert A.M. Stern designed 50 Connaught Road Central in Hong Kong's core CBD which sold for a record-setting price of HK\$4.88 billion, or C\$800 million.

