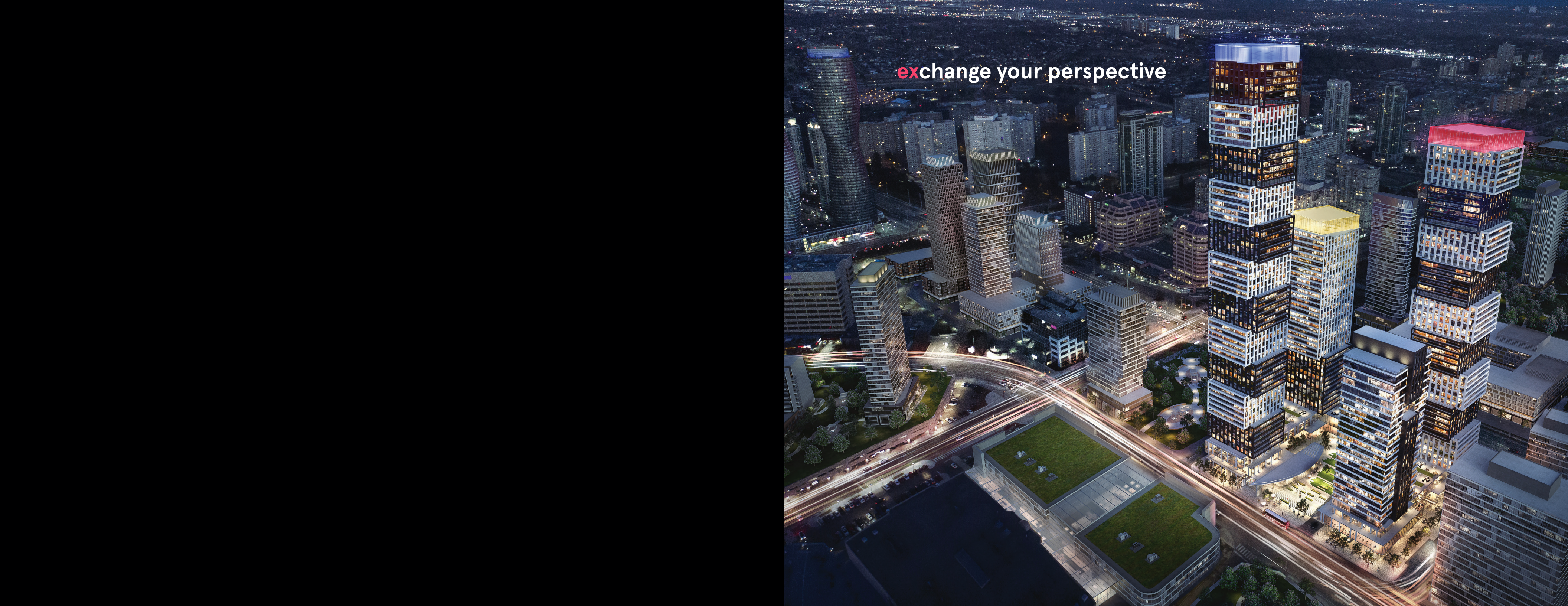


EXCHANGE
DISTRICT
suite layouts

exchange your perspective





experience the future of downtown Mississauga

Some will call the Exchange District a city unto itself, a mixed-use, vibrant and rich urban destination. Others may call it striking for its engaging architectural volumes. A lucky few will call it home.

NEW RETAIL • OFFICE • CULTURE • SHOPPING & DINING • BOUTIQUE HOTEL • PARKS & PUBLIC SPACES •
CONDOMINIUM RESIDENCES • ADJACENT TO SQUARE ONE SHOPPING MALL • NEW LRT RAPID TRANSIT



**experience your
own private
urban retreat**

Suites at EX1 have been thoughtfully designed to maximize space with carefully selected features to complement your lifestyle. With state-of-the-art finishes, sleek layouts, modern kitchen and bathrooms, and an abundance of natural light, enjoy urban inspired sophistication and innovative details.

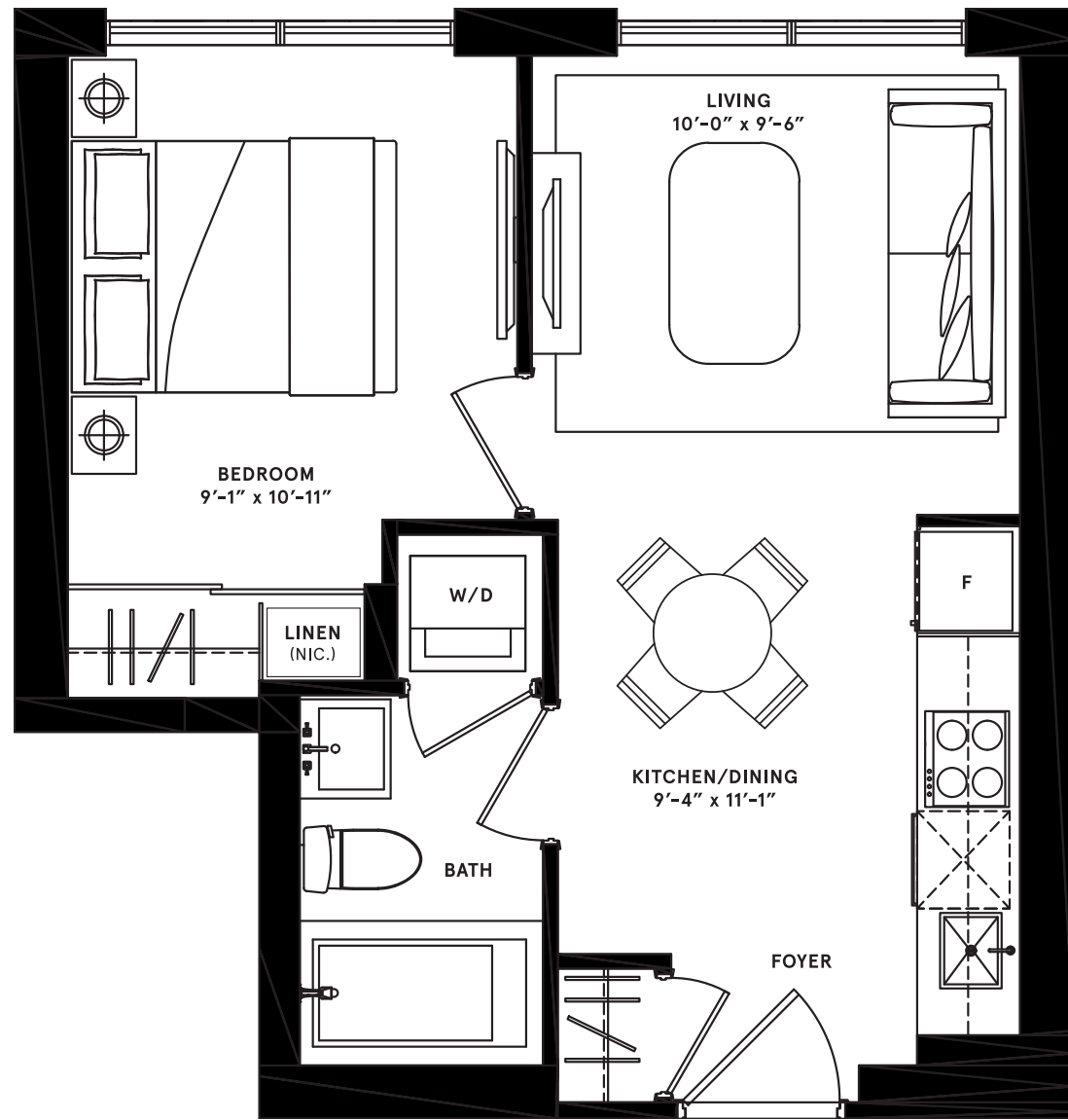




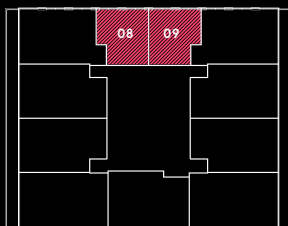
paris

1 BEDROOM

total: 420 sq.ft



NORTH
TYPICAL FLOOR: A



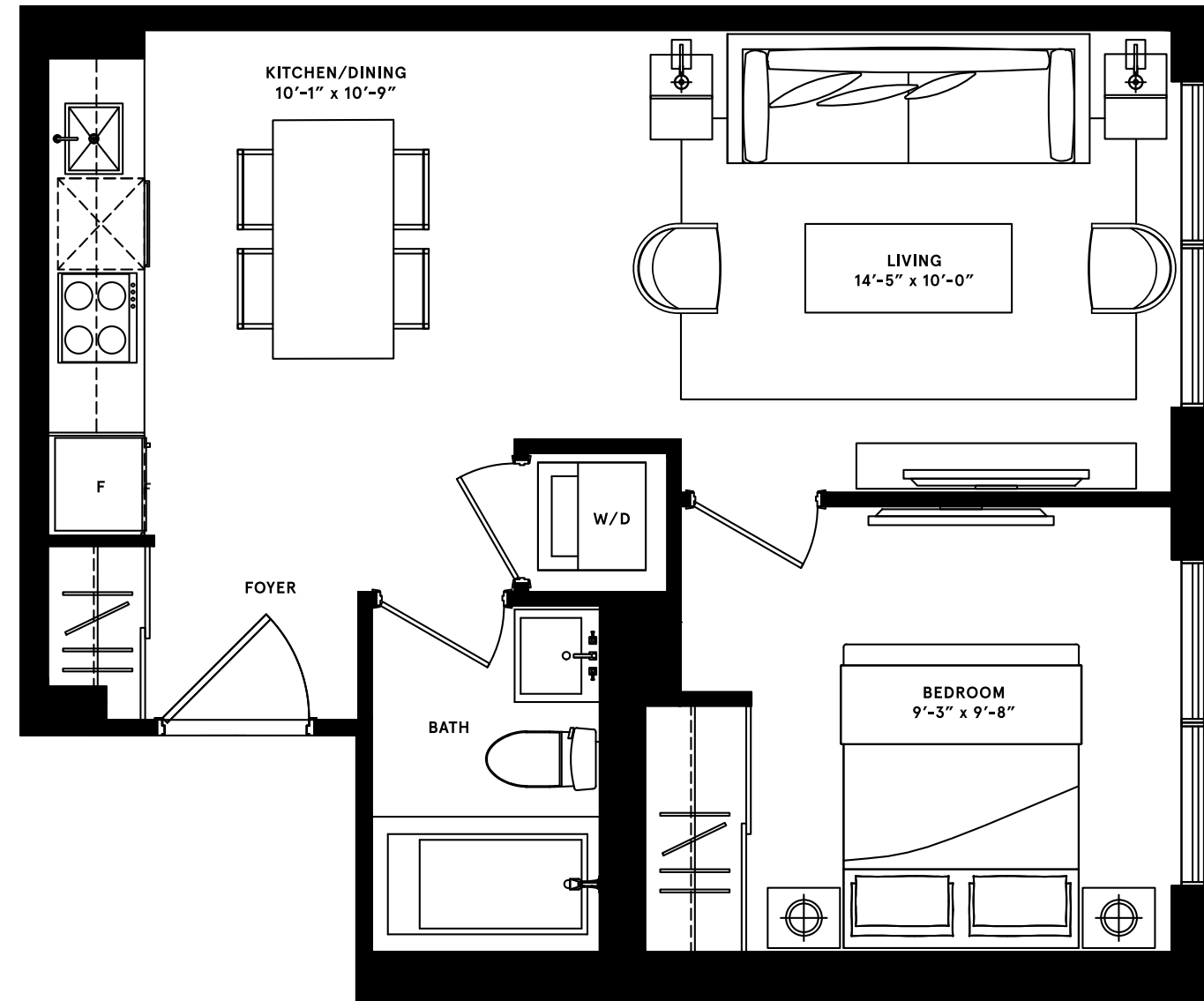
Dimensions, specifications, layouts (including but not limited to tile patterns), window sizes, mullions, fixture representation, appliance and fixture locations, and materials are approximate only, may vary, and are subject to changes without notice as provided in the Agreement of Purchase and Sale. Plans may be reversed or flipped. Wall thickness will vary with floor levels reducing room dimensions accordingly. Actual usable floor space may vary from the stated floor area. Measurements of rooms set forth on any floor plan are generally taken at the greatest points of each given room and center line of windows (as if the room were perfectly rectangular). Furniture or Chattles are not included. Prices are subject to change without notice. E. & O. E. Plans are not to scale. For more information on the method used for calculating floor area of any unit, reference should be made to Builder Bulletin NO. 22 published by Tarion.



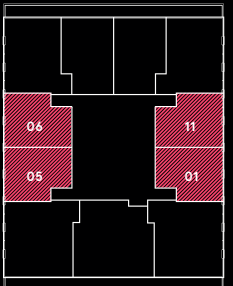
tokyo

1 BEDROOM

total: 515 sq.ft



NORTH
TYPICAL FLOOR: B



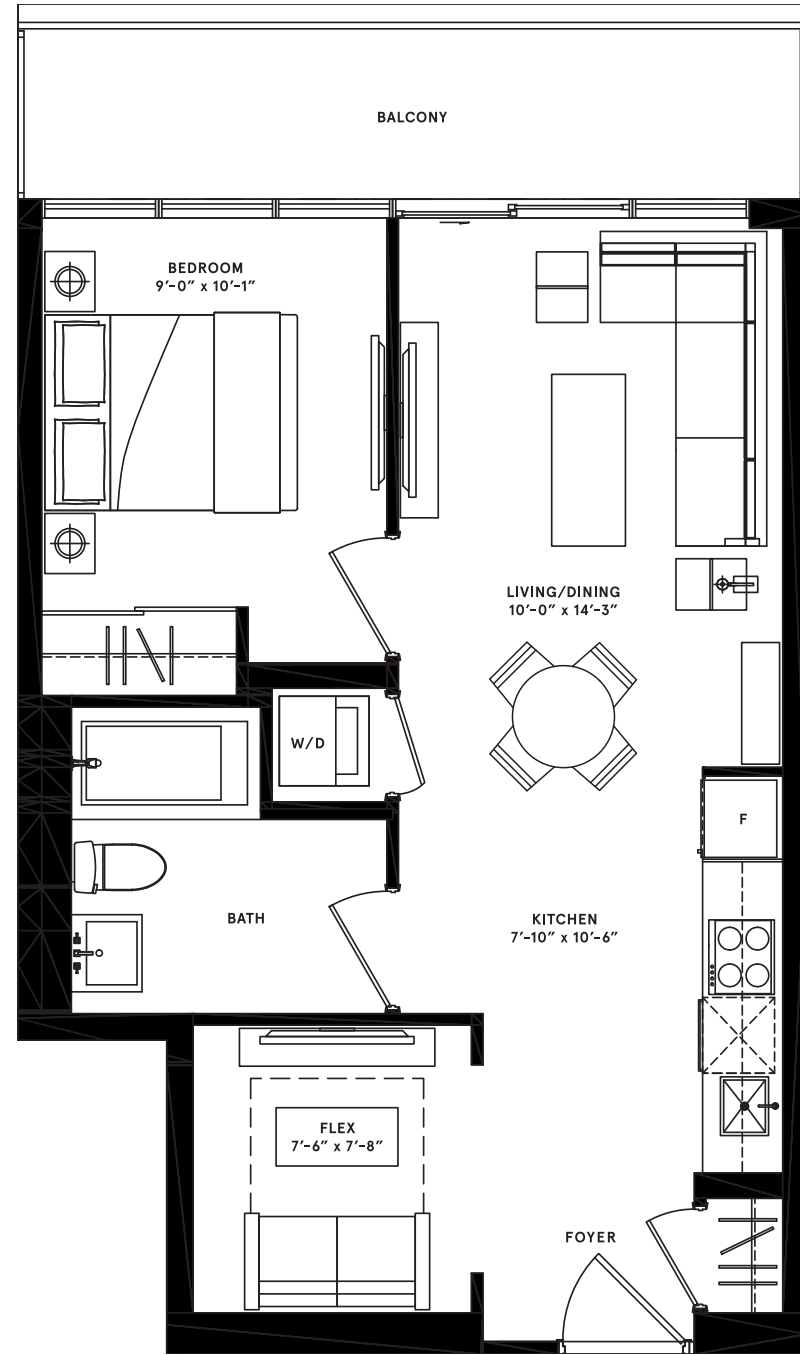
Dimensions, specifications, layouts (including but not limited to tile patterns), window sizes, mullions, fixture representation, appliance and fixture locations, and materials are approximate only, may vary, and are subject to changes without notice as provided in the Agreement of Purchase and Sale. Plans may be reversed or flipped. Wall thickness will vary with floor levels reducing room dimensions accordingly. Actual usable floor space may vary from the stated floor area. Measurements of rooms set forth on any floor plan are generally taken at the greatest points of each given room and center line of windows (as if the room were perfectly rectangular). Furniture or Chattles are not included. Prices are subject to change without notice. E. & O. E. Plans are not to scale. For more information on the method used for calculating floor area of any unit, reference should be made to Builder Bulletin NO. 22 published by Tarion.



seoul

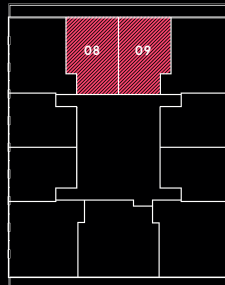
1 BEDROOM + FLEX
total: 673 sq.ft.

interior: 575 sq.ft.
balcony: 98 sq.ft.



Dimensions, specifications, layouts (including but not limited to tile patterns), window sizes, mullions, fixture representation, appliance and fixture locations, and materials are approximate only, may vary, and are subject to changes without notice as provided in the Agreement of Purchase and Sale. Plans may be reversed or flipped. Wall thickness will vary with floor levels reducing room dimensions accordingly. Actual usable floor space may vary from the stated floor area. Measurements of rooms set forth on any floor plan are generally taken at the greatest points of each given room and center line of windows (as if the room were perfectly rectangular). Furniture or Chattles are not included. Prices are subject to change without notice. E. & O. E. Plans are not to scale. For more information on the method used for calculating floor area of any unit, reference should be made to Builder Bulletin NO. 22 published by Tarion.

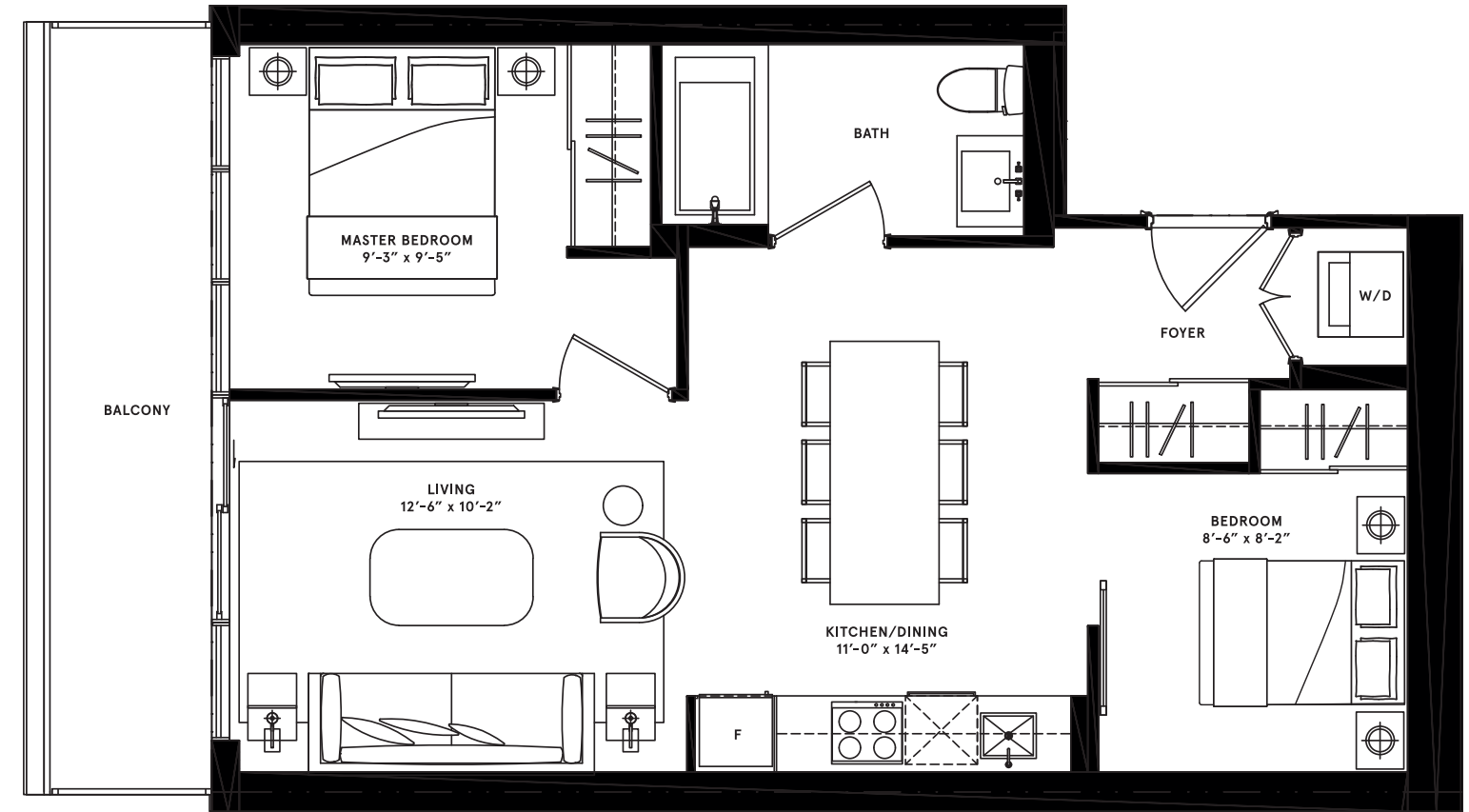
NORTH
TYPICAL FLOOR: B



london

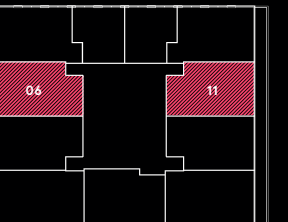
2 BEDROOM
total: 761 sq.ft.

interior: 665 sq.ft.
balcony: 96 sq.ft.



Dimensions, specifications, layouts (including but not limited to tile patterns), window sizes, mullions, fixture representation, appliance and fixture locations, and materials are approximate only, may vary, and are subject to changes without notice as provided in the Agreement of Purchase and Sale. Plans may be reversed or flipped. Wall thickness will vary with floor levels reducing room dimensions accordingly. Actual usable floor space may vary from the stated floor area. Measurements of rooms set forth on any floor plan are generally taken at the greatest points of each given room and center line of windows (as if the room were perfectly rectangular). Furniture or Chattles are not included. Prices are subject to change without notice. E. & O. E. Plans are not to scale. For more information on the method used for calculating floor area of any unit, reference should be made to Builder Bulletin NO. 22 published by Tarion.

NORTH
TYPICAL FLOOR: A





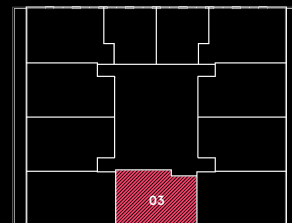
rome

2 BEDROOM

total: 675 sq.ft



NORTH
TYPICAL FLOOR: A



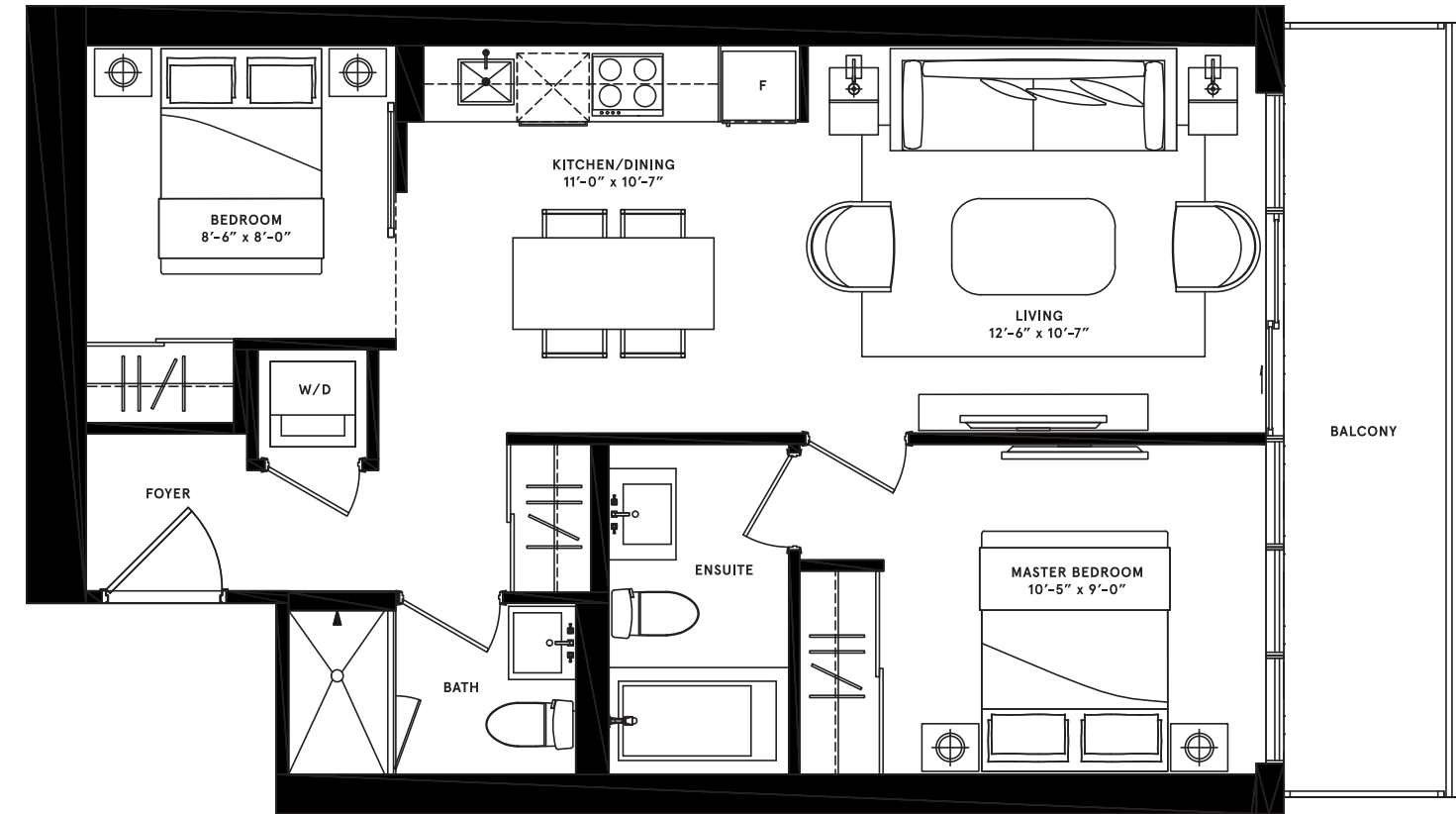
Dimensions, specifications, layouts (including but not limited to tile patterns), window sizes, mullions, fixture representation, appliance and fixture locations, and materials are approximate only, may vary, and are subject to changes without notice as provided in the Agreement of Purchase and Sale. Plans may be reversed or flipped. Wall thickness will vary with floor levels reducing room dimensions accordingly. Actual usable floor space may vary from the stated floor area. Measurements of rooms set forth on any floor plan are generally taken at the greatest points of each given room and center line of windows (as if the room were perfectly rectangular). Furniture or Chattles are not included. Prices are subject to change without notice. E. & O. E. Plans are not to scale. For more information on the method used for calculating floor area of any unit, reference should be made to Builder Bulletin NO. 22 published by Tarion.



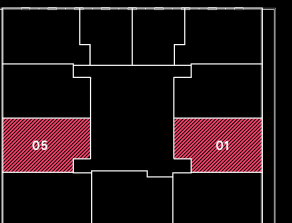
sydney

2 BEDROOM
total: 781 sq.ft.

interior: 685 sq.ft.
balcony: 96 sq.ft.



NORTH
TYPICAL FLOOR: A



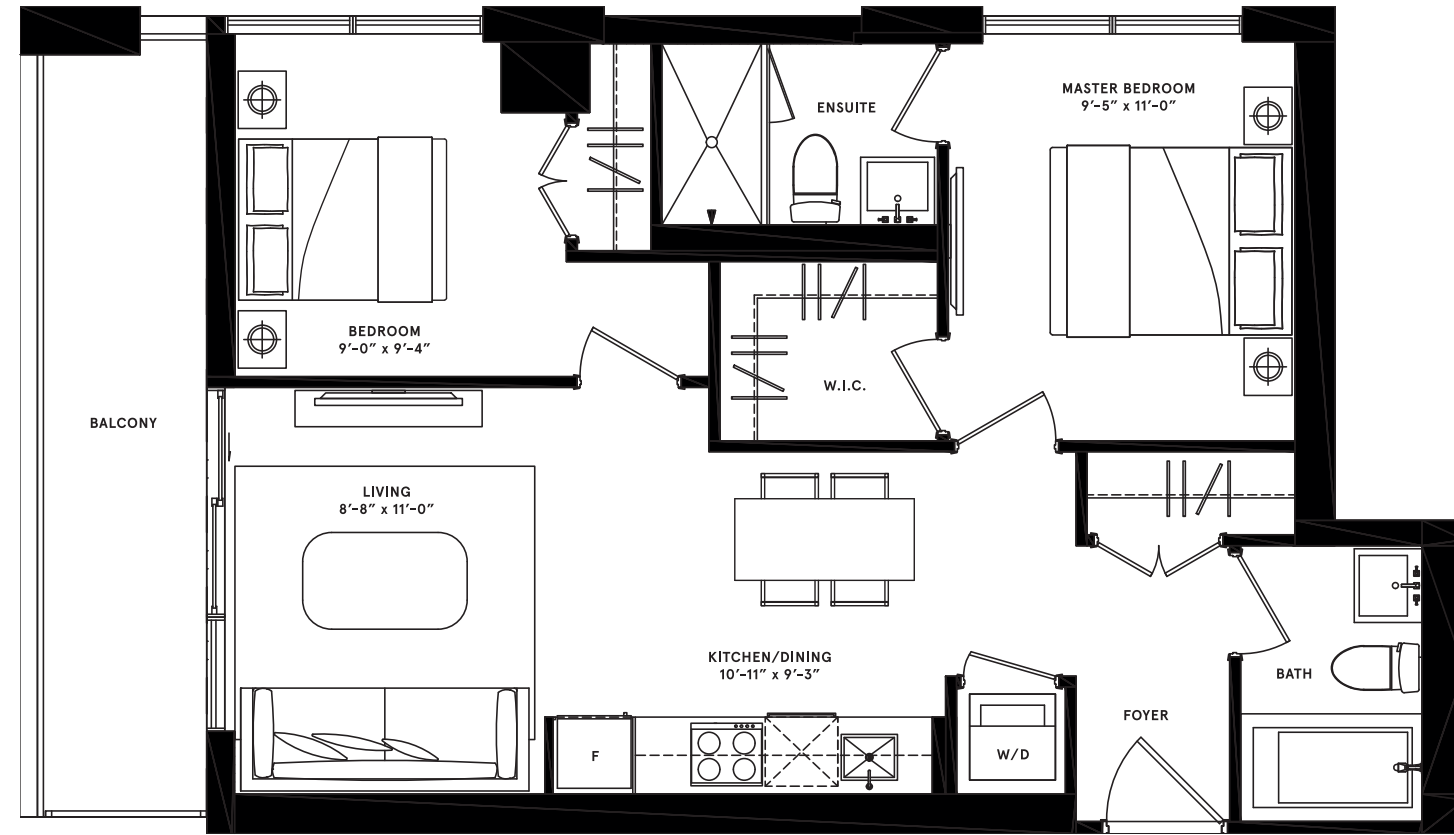
Dimensions, specifications, layouts (including but not limited to tile patterns), window sizes, mullions, fixture representation, appliance and fixture locations, and materials are approximate only, may vary, and are subject to changes without notice as provided in the Agreement of Purchase and Sale. Plans may be reversed or flipped. Wall thickness will vary with floor levels reducing room dimensions accordingly. Actual usable floor space may vary from the stated floor area. Measurements of rooms set forth on any floor plan are generally taken at the greatest points of each given room and center line of windows (as if the room were perfectly rectangular). Furniture or Chattles are not included. Prices are subject to change without notice. E. & O. E. Plans are not to scale. For more information on the method used for calculating floor area of any unit, reference should be made to Builder Bulletin NO. 22 published by Tarion.



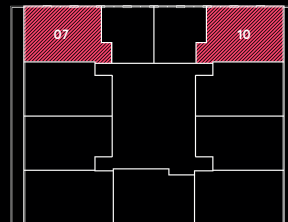
beijing

2 BEDROOM
total: 786 sq.ft.

interior: 690 sq.ft.
balcony: 96 sq.ft.



NORTH
TYPICAL FLOOR: A



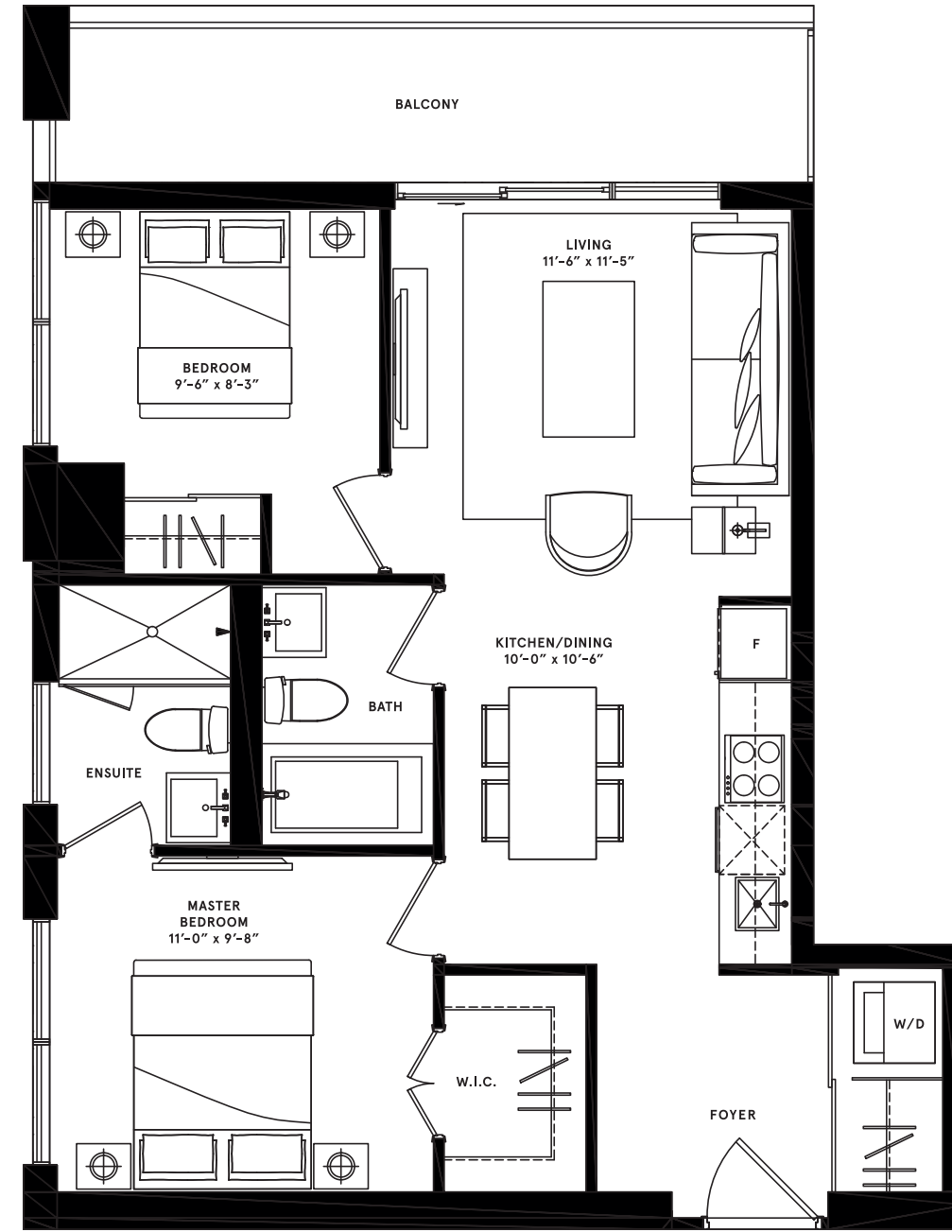
Dimensions, specifications, layouts (including but not limited to tile patterns), window sizes, mullions, fixture representation, appliance and fixture locations, and materials are approximate only, may vary, and are subject to changes without notice as provided in the Agreement of Purchase and Sale. Plans may be reversed or flipped. Wall thickness will vary with floor levels reducing room dimensions accordingly. Actual usable floor space may vary from the stated floor area. Measurements of rooms set forth on any floor plan are generally taken at the greatest points of each given room and center line of windows (as if the room were perfectly rectangular). Furniture or Chattles are not included. Prices are subject to change without notice. E. & O. E. Plans are not to scale. For more information on the method used for calculating floor area of any unit, reference should be made to Builder Bulletin NO. 22 published by Tarion.



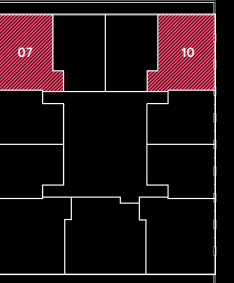
lisbon

2 BEDROOM
total: 801 sq.ft.

interior: 695 sq.ft.
balcony: 106 sq.ft.



NORTH
TYPICAL FLOOR: B



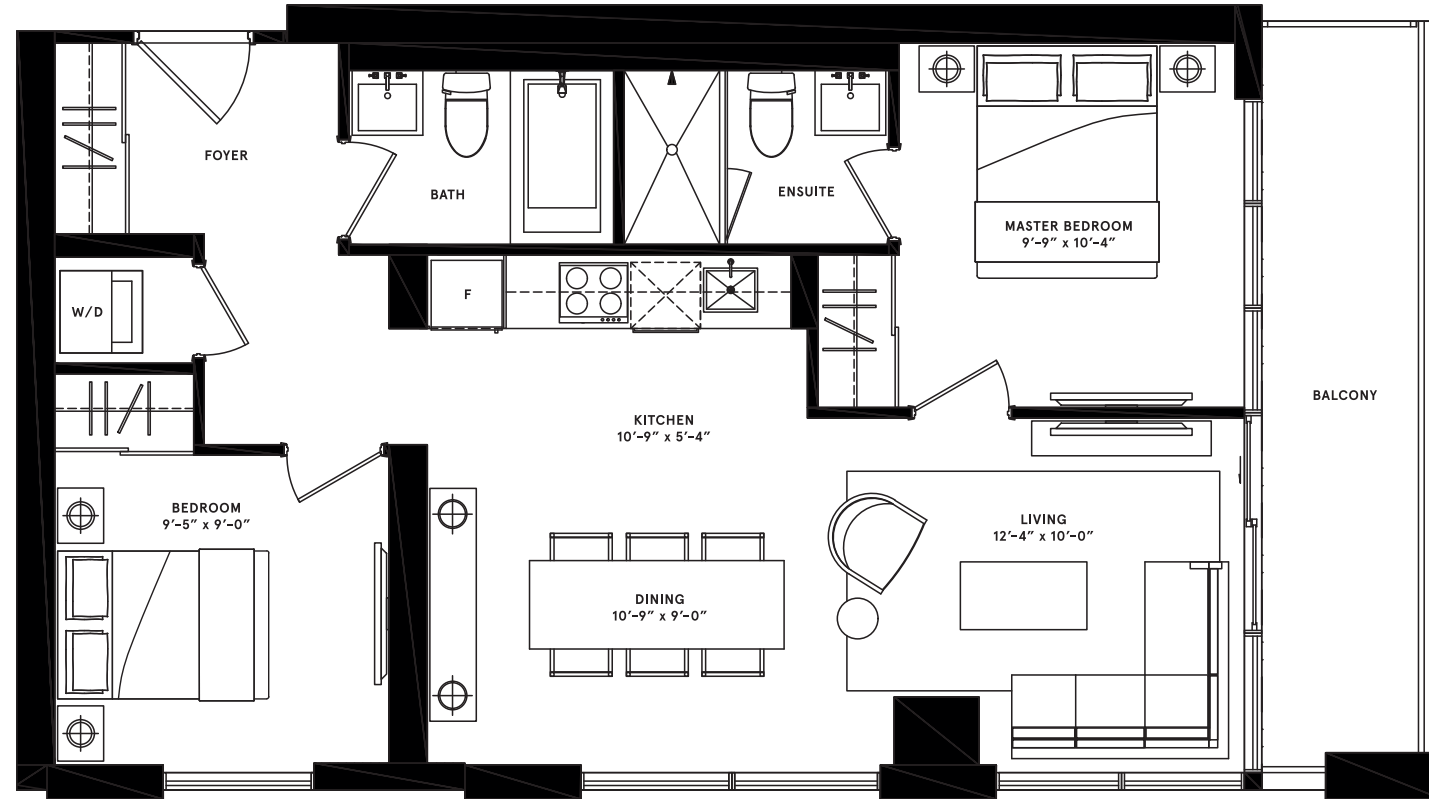
Dimensions, specifications, layouts (including but not limited to tile patterns), window sizes, mullions, fixture representation, appliance and fixture locations, and materials are approximate only, may vary, and are subject to changes without notice as provided in the Agreement of Purchase and Sale. Plans may be reversed or flipped. Wall thickness will vary with floor levels reducing room dimensions accordingly. Actual usable floor space may vary from the stated floor area. Measurements of rooms set forth on any floor plan are generally taken at the greatest points of each given room and center line of windows (as if the room were perfectly rectangular). Furniture or Chattles are not included. Prices are subject to change without notice. E. & O. E. Plans are not to scale. For more information on the method used for calculating floor area of any unit, reference should be made to Builder Bulletin NO. 22 published by Tarion.



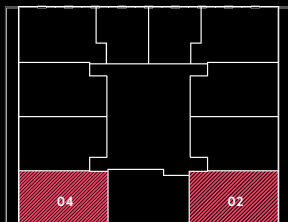
berlin

2 BEDROOM
total: 845 sq.ft.

interior: 749 sq.ft.
balcony: 96 sq.ft.



NORTH
TYPICAL FLOOR: A



Dimensions, specifications, layouts (including but not limited to tile patterns), window sizes, mullions, fixture representation, appliance and fixture locations, and materials are approximate only, may vary, and are subject to changes without notice as provided in the Agreement of Purchase and Sale. Plans may be reversed or flipped. Wall thickness will vary with floor levels reducing room dimensions accordingly. Actual usable floor space may vary from the stated floor area. Measurements of rooms set forth on any floor plan are generally taken at the greatest points of each given room and center line of windows (as if the room were perfectly rectangular). Furniture or Chattles are not included. Prices are subject to change without notice. E. & O. E. Plans are not to scale. For more information on the method used for calculating floor area of any unit, reference should be made to Builder Bulletin NO. 22 published by Tarion.



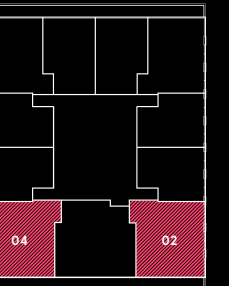
singapore

2 BEDROOM
total: 949 sq.ft.

interior: 820 sq.ft.
balcony: 129 sq.ft.



NORTH
TYPICAL FLOOR: B



Dimensions, specifications, layouts (including but not limited to tile patterns), window sizes, mullions, fixture representation, appliance and fixture locations, and materials are approximate only, may vary, and are subject to changes without notice as provided in the Agreement of Purchase and Sale. Plans may be reversed or flipped. Wall thickness will vary with floor levels reducing room dimensions accordingly. Actual usable floor space may vary from the stated floor area. Measurements of rooms set forth on any floor plan are generally taken at the greatest points of each given room and center line of windows (as if the room were perfectly rectangular). Furniture or Chattles are not included. Prices are subject to change without notice. E. & O. E. Plans are not to scale. For more information on the method used for calculating floor area of any unit, reference should be made to Builder Bulletin NO. 22 published by Tarion.

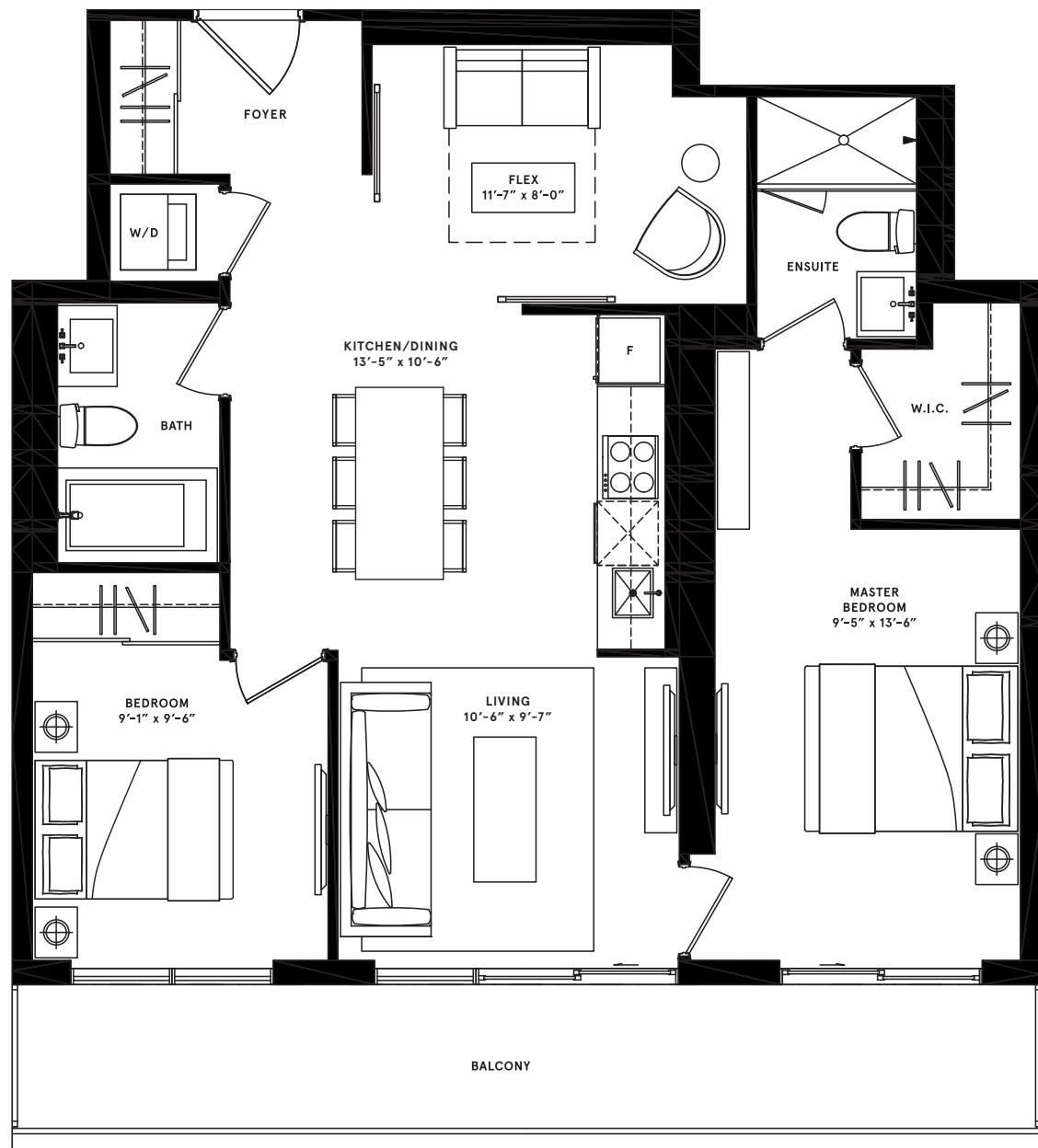
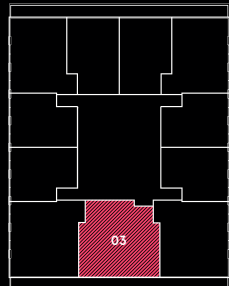


new york

2 BEDROOM + FLEX
total: 1,037 sq.ft.

interior: 885 sq.ft.
balcony: 152 sq.ft.

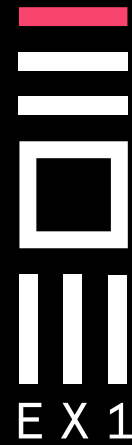
NORTH
TYPICAL FLOOR: B



Dimensions, specifications, layouts (including but not limited to tile patterns), window sizes, mullions, fixture representation, appliance and fixture locations, and materials are approximate only, may vary, and are subject to changes without notice as provided in the Agreement of Purchase and Sale. Plans may be reversed or flipped. Wall thickness will vary with floor levels reducing room dimensions accordingly. Actual usable floor space may vary from the stated floor area. Measurements of rooms set forth on any floor plan are generally taken at the greatest points of each given room and center line of windows (as if the room were perfectly rectangular). Furniture or Chattles are not included. Prices are subject to change without notice. E. & O. E. Plans are not to scale. For more information on the method used for calculating floor area of any unit, reference should be made to Builder Bulletin NO. 22 published by Tarion.

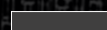


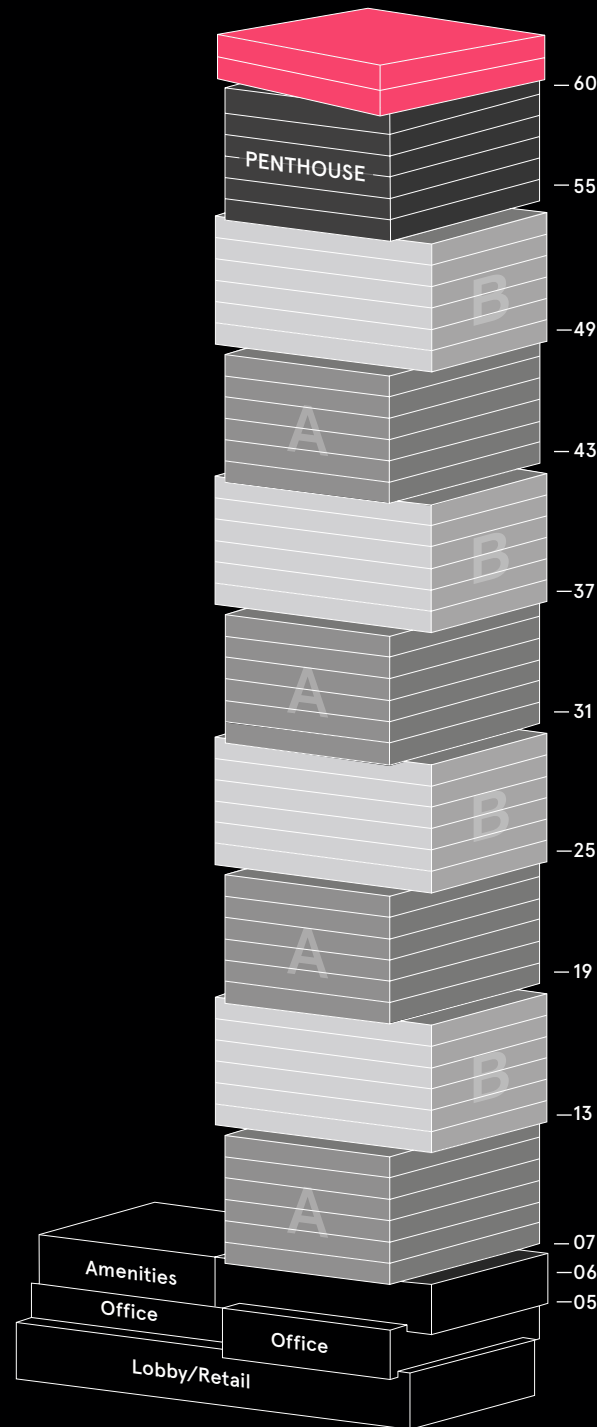
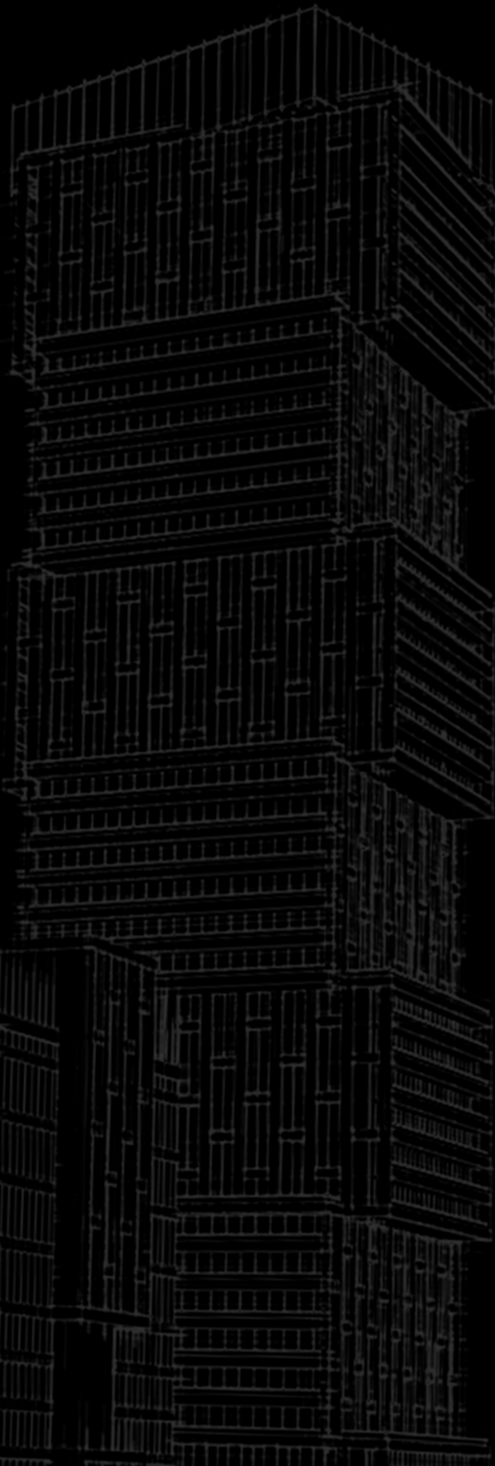
EAST VIEW



EX 1

Massing Diagram

-  Penthouse
-  Typical Floor: A
-  Typical Floor: B



Features and finishes

MASTER-PLANNED COMMUNITY:

- Master-planned, mixed-use destination community consisting of 4 towers, pedestrian piazza, retail, and hotel
- Podium with 20,000+ square feet of indoor and outdoor amenities
- Extensive at-grade retail along future Exchange street, with proposed boutique hotel, cafes and restaurants
- Pedestrian piazza including feature steps, expansive retail and restaurant offering with outdoor event space designed by internationally acclaimed BDP Architects from London, England

BUILDING FEATURES:

- Dramatically designed metal and glass tower consisting of offset symmetrical blocks rotated 90 degrees every six floors by internationally recognized IBI Group Architects
- Spacious double-height lobby, with feature spiral staircase and artist's sculptural centrepiece, with 24-hour concierge station and elegantly furnished lounge designed by Joven Huard Design
- Five high-speed elevators with custom designed cabs

INTERIOR SUITE FINISHES:

- Up to 9'0" high smooth painted ceilings in principal rooms**
- Custom European designed kitchens and vanities with soft-close hinges and designer architectural hardware
- 24" panelled fridge and freezer combo, 24" four-burner electric cooktop, 24" electric oven, built-in hood fan, 18" panelled dishwasher, undermounted stainless steel sink
- Convenient in-suite stackable washer and dryer
- Premium quartz countertops
- Sleek painted flat-slab profiled swing interior doors with painted door frames, brushed chrome finished hardware and modern step-profiled baseboards
- Durable laminate wide plank wood flooring throughout, with high-grade porcelain stone tile in bathrooms
- Smart suite entry & building access system by Latch Smart Access Solutions

COMMON ELEMENTS:

(Over 20,000 sq.ft. of Indoor and Outdoor Amenities):

- Modern fitness auditorium with circuit training, cardio equipment, yoga studio & stretch room

- Half-court basketball court
- Tranquil indoor swimming pool, whirlpool spa, sauna and steam room with adjacent outdoor sundeck
- Men's and Women's changeroom, each with showers and day lockers
- Convenient amenities' coordinator station
- Mezzanine level multipurpose lounge & co-working space with executive boardrooms
- Tranquil 7th-floor outdoor roof garden, outdoor fireplace with comfortable lounge seating, outdoor screening area and patio with gas BBQs and dining space
- Private party room and catering kitchen with direct connection to outdoor terrace
- Multipurpose recreation & games room
- Pet wash & dedicated pet entrance
- On-site Commercial Parking
- Parcel room and cold-storage for fresh produce and flower deliveries

**Ceiling Heights are approximate only measured from concrete floor slab to unfinished ceiling slab and may be lower in certain areas due to construction variations, bulkheads, chases etc.as set out in the Agreement. Principal rooms include only Living/Dining room and Master Bedroom.

NOTE: Specifications are subject to change without notice. Vendor may substitute materials for those shown in the Plans and Specifications, provided such materials in the sole opinion of the Vendor's consultant are of at least comparable quality. Model suites, displays, marketing materials and Schedule "A" may include finishes that are upgrades and are not included in the purchase price. These upgrades may be offered at extra cost at time of colour selection or may not be made available. Presentation gallery kitchen is not necessarily representative of a kitchen to be installed in all the Units. Where brand names are specified, the Vendor, in its sole discretion, may substitute with similar product of at least equal quality from another manufacturer. Appliance locations shown or listed in all documents may vary. Only those items designated with an asterisk (*) may be selected by Purchaser. All dimensions stated herein are approximate only. Presentation Gallery display furnishings and decorations are not included. Errors and omissions are excepted.





BISTRO & BAR

MENU
SIDES
ENTREES
CARVING STATION

YOUR FIRST ACCESS TO TORONTO PRE-CONSTRUCTION CONDOS

INVESTING IN TORONTO CONDOS?
INSPECT TOP CONDOS DEALS

NEWGTA
CONDOS.com

10376 Yonge St., Unit 306, Richmond Hill, ON, L4C 3B8
416.832.8343 | info@newgtacondos.com

